

**Series 300
3029, 4039, 4045,
6059, and 6068
OEM Diesel Engines**

**Deere Power Systems Group
OMRG18293 Issue H4
(This manual replaces OMRG18293 C3)**

LITHO IN U.S.A.
ENGLISH

Introduction

READ THIS MANUAL CAREFULLY to learn how to operate and service your engine correctly. Failure to do so could result in personal injury or equipment damage.

THIS MANUAL SHOULD BE CONSIDERED a permanent part of your engine and should remain with the engine when you sell it.

MEASUREMENTS IN THIS MANUAL are given in both metric and customary U.S. unit equivalents. Use only correct replacement parts and fasteners. Metric and inch fasteners may require a specific metric or inch wrench.

RIGHT-HAND AND LEFT-HAND sides are determined by standing at the drive or flywheel end (rear) of the engine and facing toward the front of the engine.

WRITE ENGINE SERIAL NUMBERS and the option codes in the spaces indicated in the Specifications section. Accurately record all the numbers. Your dealer also needs these numbers when parts are ordered. File the identification numbers in a secure place off the engine.

SETTING FUEL DELIVERY beyond published factory specifications or otherwise overpowering will result in loss of warranty protection for this engine.

CERTAIN ENGINE ACCESSORIES such as radiator, air cleaner, and instruments are optional equipment on John Deere OEM Engines. These accessories may be provided by the equipment manufacturer instead of John Deere. This operator's manual applies only to the engine and those options available through the John Deere distribution network.

Engine Owner

JOHN DEERE ENGINE OWNER:

Don't wait until you need warranty or other service to meet your local John Deere Engine Distributor or Service Dealer.

Learn who he is and where he is. At your first convenience, go meet him. He'll want to get to know you and to learn what your needs might be.

UTILISATEURS DE MOTEURS JOHN DEERE:

N'attendez pas d'être obligé d'avoir recours à votre Concessionnaire ou Point de Service le plus proche pour vous adresser à lui.

Renseignez-vous dès que possible pour l'identifier et le localiser. A la première occasion, prenez contact avec lui et faites-vous connaître. Il sera lui aussi heureux de faire votre connaissance et de savoir que vous pourrez compter sur lui le moment venu.

AN DEN BESITZER DES JOHN DEERE MOTORS:

Warten Sie nicht auf einen evt. Reparaturfall um den nächstgelegenen John Deere Händler kennen zu lernen.

Machen Sie sich bei ihm bekannt und nutzen Sie sein "Service Angebot".

PROPRIETARIO DEL MOTORE JOHN DEERE:

Non aspetti fino a quando ha bisogno della garanzia o di un altro tipo di assistenza per incontrarsi con il Suo Concessionario che fornisce l'assistenza tecnica.

Impari a conoscere chi è e dove si trova. Alla Sua prima occasione cerchi d'incontrarlo. Egli desidera farsi conoscere e conoscere le Sue necessità.

PROPIETARIO DE EQUIPO JOHN DEERE:

No espere hasta necesitar servicio de garantía o de otro tipo para conocer a su Distribuidor de Motores John Deere o al Concesionario de Servicio.

Entérese de quién es, y dónde está situado. Cuando tenga un momento, vaya a visitarlo. A él le gustará conocerlo, y saber cuáles podrían ser sus necesidades.

JOHN DEERE MOTORÄGARE:

Vänta inte med att besöka Din John Deere återförsäljare till dess att Du behöver service eller garanti reparation.

Bekanta Dig med var han är och vem han är. Tag första tillfälle att besöka honom. Han vill också träffa Dig för att få veta vad Du behöver och hur han kan hjälpa Dig.

<https://www.ebooklibonline.com>

Hello dear friend!

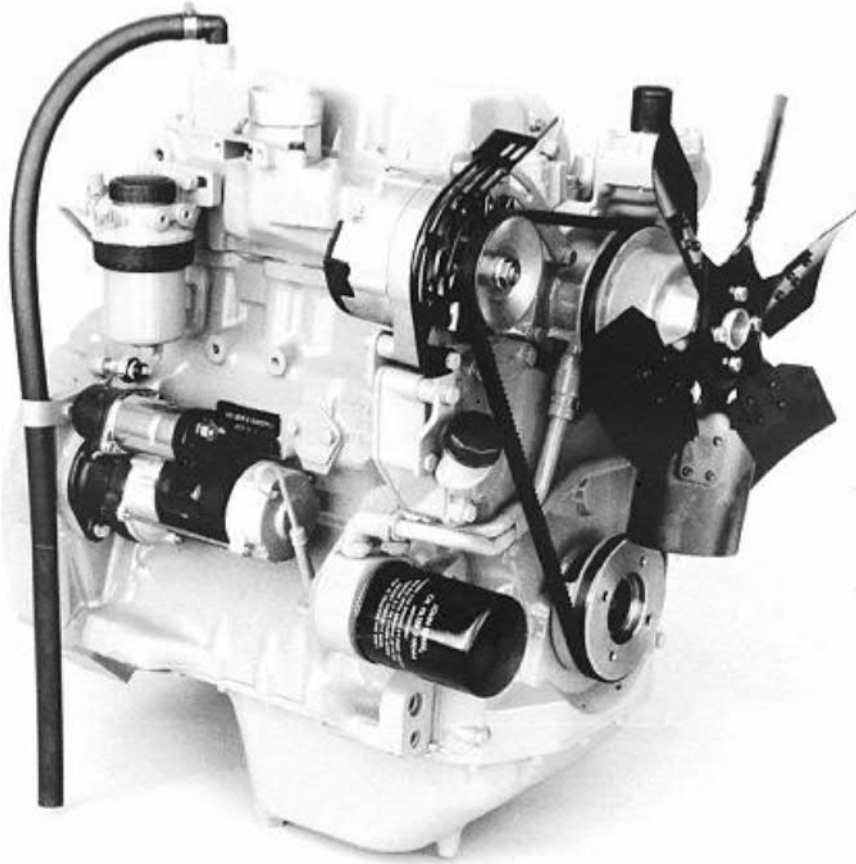
Thank you very much for reading.

Enter the link into your browser.

The full manual is available for immediate download.

<https://www.ebooklibonline.com>

Identification Views

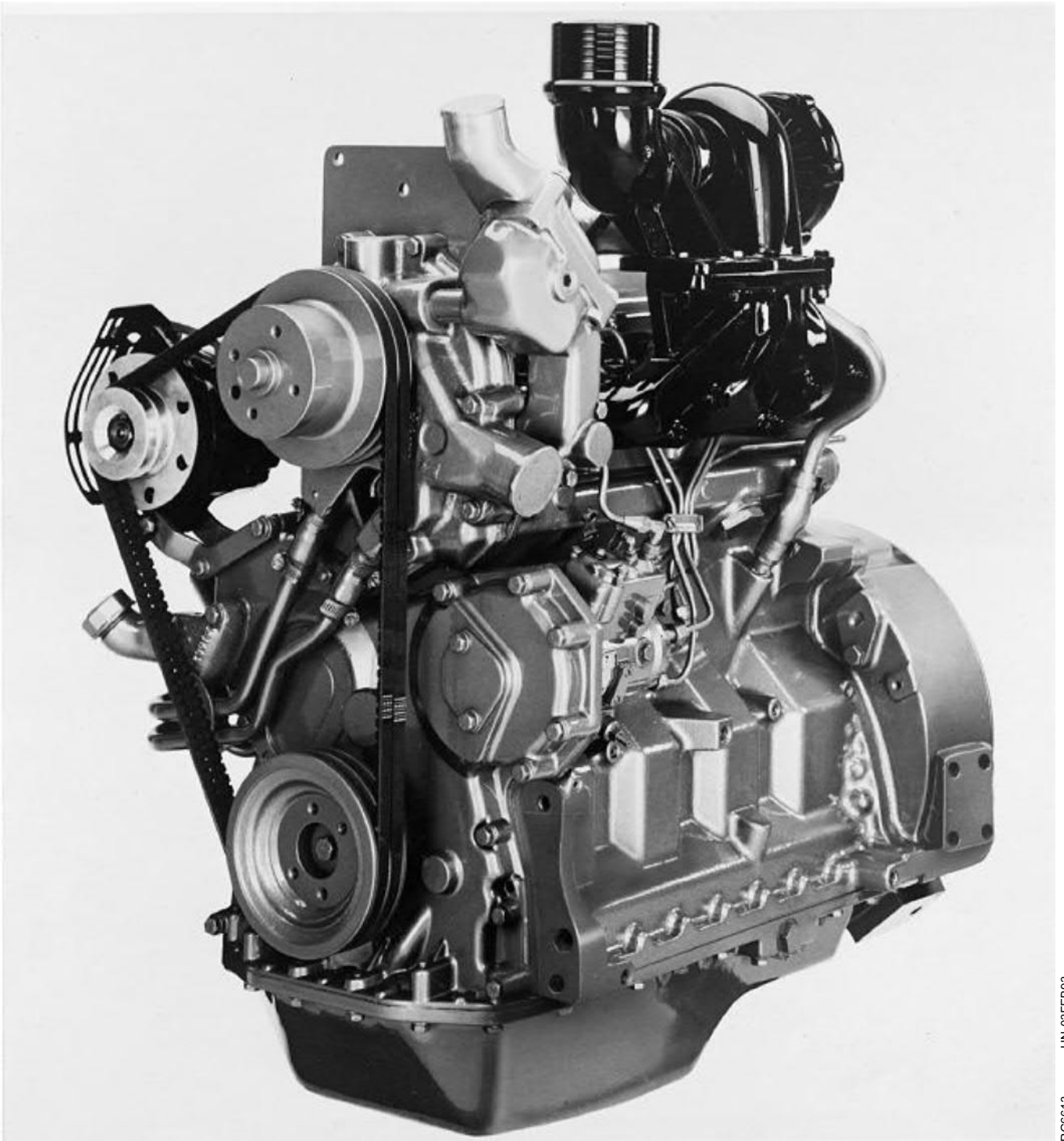


3029D Engine

S11,CONT,L3 -19-17FEB93

CDS0356 -JUN-03FEB93

Identification Views

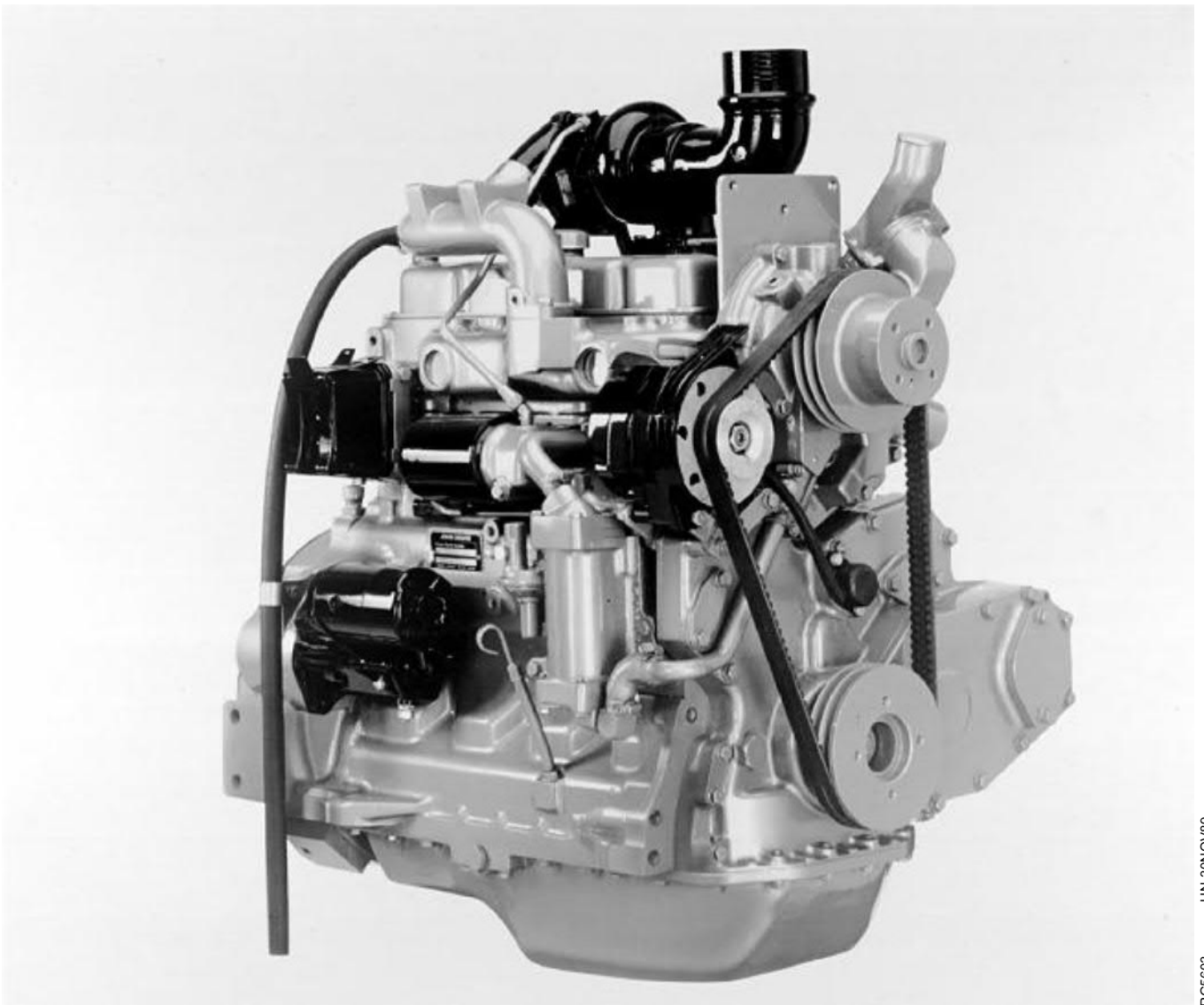


4039T Engine

S11,CONT,L4 -19-17FEB93

RG6613 -JUN-03FEB93

Identification Views

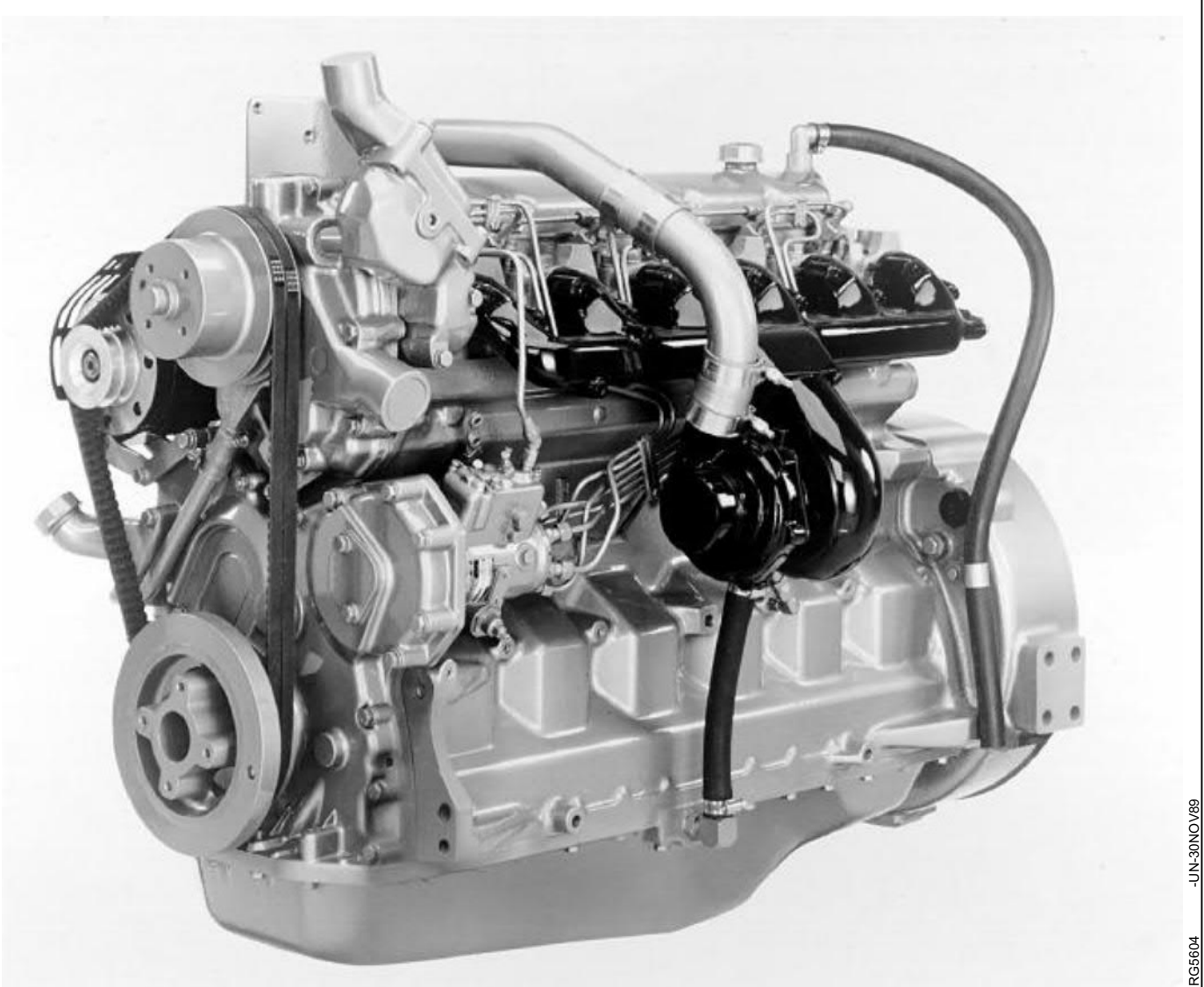


4045T Engine

RG5603 -JUN-30NOV89

S11.CONT.L1 -19-08FEB91

Identification Views



6068T Engine

RG5604 -UN-30NOV89

S11,CONT,L2 -19-08FEB91

Contents

| Page | Page | | |
|--|------|---|----|
| Record Keeping | | | |
| Engine Serial Number Plate | 1 | Stopping the Engine | 38 |
| Record Engine Serial Number | 2 | Using A Booster Battery or Charger | 39 |
| Engine Option Codes | 3 | Lubrication and Maintenance | |
| Record PTO Serial Number | 5 | Observe Service Intervals | 40 |
| Record Fuel Injection Pump Model Number | 5 | Use Correct Fuels, Lubricants, and Coolant | 40 |
| Safety | 6 | Lubrication and Maintenance Service Interval Chart | 41 |
| Fuels, Lubricants, and Coolant | | Lubrication and Maintenance/100 Hour | |
| Diesel Fuel | 13 | Lubricate PTO Clutch Shaft Bearings | 42 |
| Diesel Fuel Storage | 14 | Service Fire Extinguisher | 42 |
| Filling Fuel Tank | 14 | Lubrication and Maintenance/250 Hour | |
| Minimizing the Effect of Cold Weather on Diesel Engines | 15 | Service Battery | 43 |
| Engine Break-in Oil | 16 | Change Engine Oil and Filter | 45 |
| Engine Oil | 17 | Fan and Alternator Belts Tension or Replacement | 47 |
| OILSCAN™ and COOLSCAN™ | 18 | Check PTO Clutch Adjustment | 48 |
| Alternative and Synthetic Lubricants | 18 | Lubrication and Maintenance/400 Hour | |
| Grease | 19 | Check and Adjust Engine Valve Clearance | 49 |
| Lubricant Storage | 19 | Lubrication and Maintenance/600 Hr/1-Yr | |
| Engine Coolant Requirements | 20 | Lubricate PTO Clutch Internal Levers and Linkage | 52 |
| Recommended Engine Coolant | 22 | Clean Crankcase Vent Tube | 52 |
| Engine Coolant Specifications | 23 | Check Air Intake Hoses | 53 |
| Replenishing Supplemental Coolant Additives Between Coolant Changes | 25 | Replace Fuel Filter Element | 53 |
| Disposing Of Coolant | 26 | Check Effectiveness of Coolant Solution | 55 |
| Engine Operating Guidelines | | Replace Air Cleaner Elements | 55 |
| Instrument (Gauge) Panel | 27 | Check Air Intake System | 56 |
| Break-In Service | 28 | Check Cooling System | 57 |
| Daily Prestarting Checks | 30 | Lubrication and Maintenance/1200 Hr/2-Yr | |
| Auxiliary Gear Drive Limitations | 32 | Check and Adjust Engine Speeds | 58 |
| Standby Power Units | 33 | Continued on next page | |
| Starting the Engine | 33 | | |
| Cold Weather Operation | 35 | | |
| Warming Engine | 36 | | |
| Changing Engine Speed—Standard (Mechanical) Governor | 36 | | |
| Idling Engine | 37 | | |

All information, illustrations and specifications in this manual are based on the latest information available at the time of publication. The right is reserved to make changes at any time without notice.

OMRG18293 H4-19-11AUG94

COPYRIGHT© 1994
DEERE & COMPANY
Moline, Illinois
All rights reserved
A John Deere ILLUSTRATION™ Manual

Contents

| | Page | | Page |
|--|-------------|--|-------------|
| Adjust Variable Speed on Generator Set | | Metric Bolt and Cap Screw Torque | |
| Engines | 58 | Values | 98 |
| Adjust Engine Valve Clearance | 59 | | |
| Check Fuel Injection System | 59 | Lubrication and Maintenance Records | 99 |
| Inspect Turbocharger | 59 | | |
| Check Crankshaft Vibration Damper | 60 | Index | |
| Flush Cooling System and Replace | | | |
| Thermostats | 61 | | |
| Pressure Test Cooling System and | | | |
| Radiator Cap | 63 | | |
| Perform Engine Tune-Up | 64 | | |
| Service/As Required | | | |
| Additional Service Information | 65 | | |
| Do Not Modify Fuel System | 65 | | |
| Bleed the Fuel System | 66 | | |
| Checking Coolant Level | 68 | | |
| Adding Coolant | 69 | | |
| Remove and Inspect Air Cleaner | | | |
| Elements | 70 | | |
| Cleaning Primary Filter Element | 71 | | |
| Washing Primary Filter Element | 72 | | |
| Inspecting Primary Filter Element | 73 | | |
| Element Storage | 73 | | |
| Replace Fan and Alternator Belts | 73 | | |
| Power Take-Off (PTO) Clutch | 74 | | |
| Check Instrument (Gauge) Panel Fuses | 74 | | |
| Troubleshooting | | | |
| General Troubleshooting Information | 76 | | |
| Engine Wiring Diagram Legend | 78 | | |
| Wiring Diagram—North American Series | | | |
| 300 Engines | 79 | | |
| Engine Wiring Diagram Legend | 80 | | |
| Wiring Diagram—European (Saran) | | | |
| Series 300 Engines | 81 | | |
| Diagnosing Engine Malfunctions | 82 | | |
| Diagnosing Electrical System Malfunctions. | 86 | | |
| Storage | | | |
| Use AR41785 Engine Storage Kit | 88 | | |
| Storing the Engine | 88 | | |
| Removing Engine From Storage | 90 | | |
| Specifications | | | |
| General OEM Engine Specifications | 91 | | |
| Fuel Injection Pump Specifications | 94 | | |
| Engine Crankcase Oil Fill Quantities | 95 | | |
| Unified Inch Bolt and Cap Screw Torque | | | |
| Values | 97 | | |

RECORD ENGINE SERIAL NUMBER

Your engine will have a serial number plate.

Record all of the numbers and letters found on your engine serial number plate in the spaces provided below.

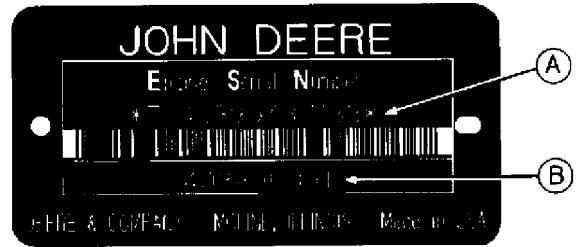
This information is very important for repair parts or warranty information.

Engine Serial Number (A)

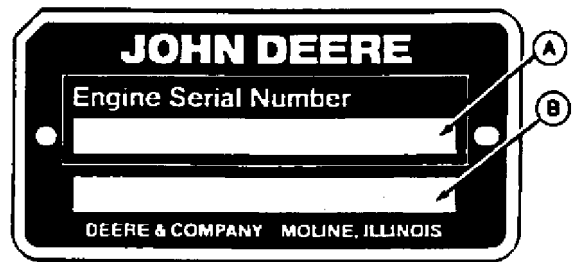
Application Data (B)

European Customer Model/Application Data (C)

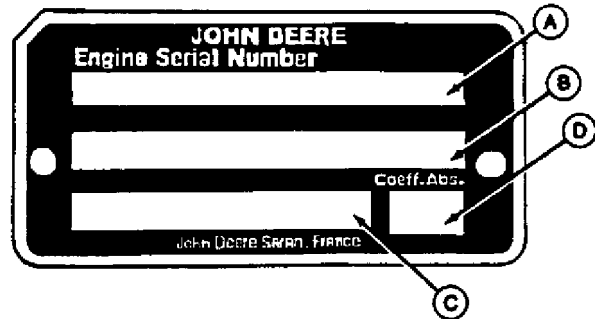
Coefficient of Absorption Value (D)



Dubuque Bar Coded Serial Number Plate



Dubuque Serial Number Plate



Saran Serial Number Plate

S55,OMSN,B -19-02AUG94

-UN-07JUL94

RG7225

-UN-09JAN90

RG5609

-UN-09JAN90

RG5610

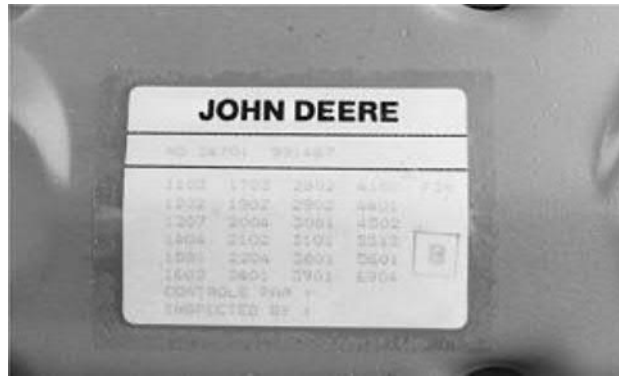
ENGINE OPTION CODES

```

J O H N   D E E R E                                11/05/94

Commande: 182838760   Base code: 147AA   Load: 654150
-      18  1101- 1202- 1301- 1406- 1501- 1603- 1701-
1902- 2004- 2109- 2204- 2403- 2802- 2902- 3001- 3115-
3519- 3601- 3703- 3901- 4005- 4199- 4398- 4499- 4599-
4603- 4708- 47AA 4802- 4901- 5001- 5101- 5299- 5525-
5601- 5906- 6206- 6699- 6903- 7699- 9801-
Controle par (inspected by):                        ***
    
```

Saran Option Code Label



Dubuque Option Code Label

In addition to the serial number plate, OEM engines have an engine option code label affixed to the rocker arm cover. These codes indicate which of the engine options were installed on your engine at the factory. When in need of parts or service, furnish your authorized servicing dealer or engine distributor with these numbers.

On Saran-built engines, the engine option code label includes an engine base code. This base code must also be recorded along with the option codes. At times it will be necessary to furnish this base code to differentiate two identical option codes for the same engine model.

The first two digits of each code identify a specific group, such as alternators. The last two digits of each code identify one specific option provided on your engine, such as a 12-volt, 55-amp alternator.

If an engine is ordered without a particular component, the last two digits of that functional group option code will be nines (99). The following list shows only the first two digits of the code numbers. For future reference such as ordering repair parts, it is important to have these code numbers available. To ensure this availability, enter the third and fourth digits shown on your engine option code label in the spaces provided on the following page.

NOTE: Your engine option code label may not contain all option codes if an option has been added after the engine left the producing factory.

ENGINE OPTION CODES—CONTINUED

Engine Base Code: _____

| Option Codes | Description | Option Codes | Description |
|--------------|--------------------|--------------|---|
| 11 _____ | Rocker Arm Cover | 40 _____ | Dipstick |
| 12 _____ | Oil Filler | 41 _____ | Belt Driven Front Auxiliary Drive |
| 13 _____ | Crankshaft Pulley | 43 _____ | Air Inlet Heater |
| 14 _____ | Flywheel Housing | 44 _____ | Timing Gear Cover With Gears |
| 15 _____ | Flywheel | 45 _____ | Balancers For 4-Cylinder Engines |
| 16 _____ | Injection Pump | 46 _____ | Cylinder Block With Liners and Camshaft |
| 17 _____ | Air Inlet | 47 _____ | Crankshaft and Bearings |
| 18 _____ | Air Cleaner | 48 _____ | Connecting Rods and Pistons |
| 19 _____ | Oil Pan | 49 _____ | Valve Actuating Mechanisms |
| 20 _____ | Water Pump | 50 _____ | Oil Pumps |
| 21 _____ | Thermostat Cover | 51 _____ | Cylinder Head With Valves |
| 22 _____ | Thermostat | 52 _____ | Auxiliary Gear Drive |
| 23 _____ | Fan Drive | 55 _____ | Shipping Stand |
| 24 _____ | Fan Belt | 56 _____ | Paint Option |
| 25 _____ | Fan | 59 _____ | Oil Cooler and Filter |
| 27 _____ | Radiator | 62 _____ | Alternator Mounting |
| 28 _____ | Exhaust Manifold | 64 _____ | Exhaust Elbow |
| 29 _____ | Ventilator System | 65 _____ | Turbocharger |
| 30 _____ | Starting Motor | 66 _____ | Temperature Switch |
| 31 _____ | Alternator | 69 _____ | Engine Serial Number PLate |
| 32 _____ | Instrument Panel | 75 _____ | Air Restriction Indicator |
| 35 _____ | Fuel Filter | 76 _____ | Oil Pressure Switch |
| 36 _____ | Front Plate | 91 _____ | Special Equipment (Factory Installed) |
| 37 _____ | Fuel Transfer Pump | 97 _____ | Special Equipment (Field Installed) |
| 39 _____ | Thermostat Housing | 98 _____ | Shipping |

S11,OMSN,Q -19-09JUN94

Record Keeping

RECORD PTO SERIAL NUMBER

Serial number and model number are located on cover plate (Bold Arrow) of PTO housing. Record the numbers in the following spaces:

Serial Number _____

Model Number _____



RG4622 -UN-15DEC88

S11,OMSN,N -19-26FEB93

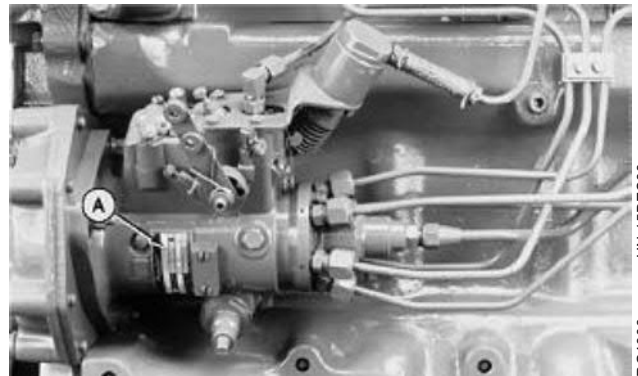
RECORD FUEL INJECTION PUMP MODEL NUMBER

Record the fuel injection pump model and serial information found on the serial number plate (A).

Model No. _____RPM _____

Manufacturer's No. _____

Serial No. _____



RG4906 -UN-15DEC88

S11,OMSN,O -19-02JUL86

Safety

RECOGNIZE SAFETY INFORMATION

This is the safety-alert symbol. When you see this symbol on your machine or in this manual, be alert to the potential for personal injury.

Follow recommended precautions and safe operating practices.



DX,ALERT -19-03MAR93

T81389 -UN-07DEC68

UNDERSTAND SIGNAL WORDS

A signal word—DANGER, WARNING, or CAUTION—is used with the safety-alert symbol. DANGER identifies the most serious hazards.

DANGER or WARNING safety signs are located near specific hazards. General precautions are listed on CAUTION safety signs. CAUTION also calls attention to safety messages in this manual.



DX,SIGNAL -19-03MAR93

TS187 -19-30SEP88

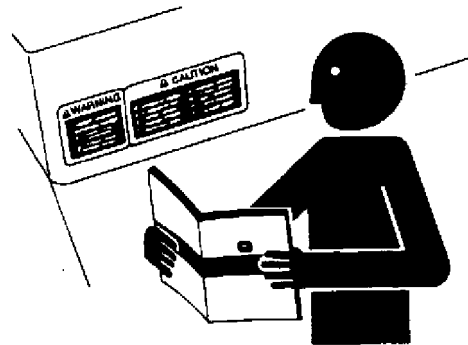
FOLLOW SAFETY INSTRUCTIONS

Carefully read all safety messages in this manual and on your machine safety signs. Keep safety signs in good condition. Replace missing or damaged safety signs. Be sure new equipment components and repair parts include the current safety signs. Replacement safety signs are available from your John Deere dealer.

Learn how to operate the machine and how to use controls properly. Do not let anyone operate without instruction.

Keep your machine in proper working condition. Unauthorized modifications to the machine may impair the function and/or safety and affect machine life.

If you do not understand any part of this manual and need assistance, contact your John Deere dealer.



DX,READ -19-03MAR93

TS201 -UN-23AUG88



PREVENT BYPASS STARTING

Avoid possible injury or death from engine runaway.

Do not start engine by shorting across starter terminal. Engine will start with PTO engaged if normal circuitry is bypassed.

Start engine only from operator's station with PTO disengaged or in neutral.



RG,BYPAS1 -19-19MAR91

RG5419 -UN-28FEB89

HANDLE FUEL SAFELY—AVOID FIRES

Handle fuel with care: it is highly flammable. Do not refuel the machine while smoking or when near open flame or sparks.

Always stop engine before refueling machine. Fill fuel tank outdoors.

Prevent fires by keeping machine clean of accumulated trash, grease, and debris. Always clean up spilled fuel.



DX,FIRE1 -19-03MAR93

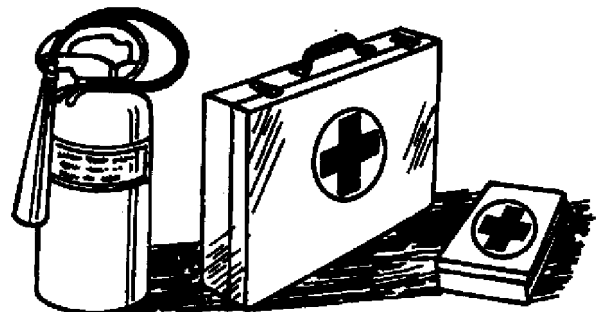
TS202 -UN-23AUG88

PREPARE FOR EMERGENCIES

Be prepared if a fire starts.

Keep a first aid kit and fire extinguisher handy.

Keep emergency numbers for doctors, ambulance service, hospital, and fire department near your telephone.



DX,FIRE2 -19-03MAR93

TS291 -UN-23AUG88



HANDLE STARTING FLUID SAFELY

Starting fluid is highly flammable.

Keep all sparks and flame away when using it. Keep starting fluid away from batteries and cables.

To prevent accidental discharge when storing the pressurized can, keep the cap on the container, and store in a cool, protected location.

Do not incinerate or puncture a starting fluid container.



DX,FIRE3 -19-16APR92

TS1356 -UN-18MAR92

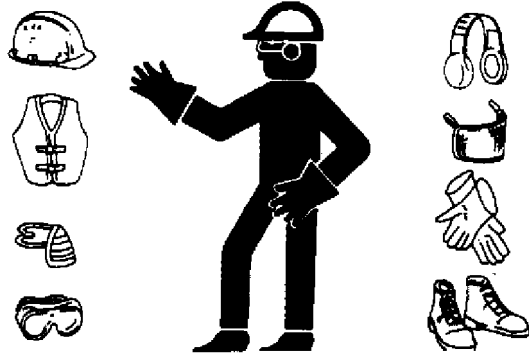
WEAR PROTECTIVE CLOTHING

Wear close fitting clothing and safety equipment appropriate to the job.

Prolonged exposure to loud noise can cause impairment or loss of hearing.

Wear a suitable hearing protective device such as earmuffs or earplugs to protect against objectionable or uncomfortable loud noises.

Operating equipment safely requires the full attention of the operator. Do not wear radio or music headphones while operating machine.



DX,WEAR -19-10SEP90

TS206 -UN-23AUG88

PROTECT AGAINST NOISE

Prolonged exposure to loud noise can cause impairment or loss of hearing.

Wear a suitable hearing protective device such as earmuffs or earplugs to protect against objectionable or uncomfortable loud noises.



DX,NOISE -19-03MAR93

TS207 -UN-23AUG88



Suggest:

If the above button click is invalid.

Please download this document

first, and then click the above link

to download the complete manual.

Thank you so much for reading



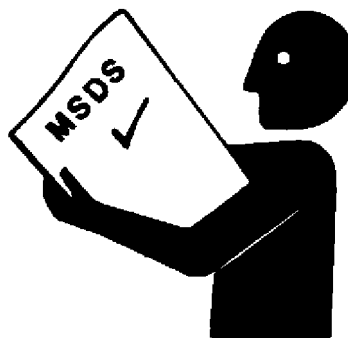
HANDLE CHEMICAL PRODUCTS SAFELY

Direct exposure to hazardous chemicals can cause serious injury. Potentially hazardous chemicals used with John Deere equipment include such items as lubricants, coolants, paints, and adhesives.

A Material Safety Data Sheet (MSDS) provides specific details on chemical products: physical and health hazards, safety procedures, and emergency response techniques.

Check the MSDS before you start any job using a hazardous chemical. That way you will know exactly what the risks are and how to do the job safely. Then follow procedures and recommended equipment.

(See your John Deere dealer for MSDS's on chemical products used with John Deere equipment.)



DX.MSDS.NA -19-03MAR93

TS1132 -UN-26NOV90

STAY CLEAR OF ROTATING DRIVELINES

Entanglement in rotating driveline can cause serious injury or death.

Keep master shield and driveline shields in place at all times. Make sure rotating shields turn freely.

Wear close fitting clothing. Stop the engine and be sure the PTO driveline is stopped before making adjustments or performing any type service on the engine or PTO-driven equipment.



RG21891,3 -19-25JAN93

TS198 -UN-23AUG88

<https://www.ebooklibonline.com>

Hello dear friend!

Thank you very much for reading.

Enter the link into your browser.

The full manual is available for immediate download.

<https://www.ebooklibonline.com>