

**JOHN DEERE NO. 12-A
STRAIGHT-THROUGH
COMBINE (66-INCH CUT)
SERIAL NO. 12-65519
AND UP**



OPERATORS MANUAL

JOHN DEERE NO. 12-A STRAIGHT-THROUGH
COMBINE (66-INCH CUT) SERIAL NO. 12-65519
AND UP

OMH31148 (01NOV48) English

OMH31148 (01NOV48)

LITHO IN THE U.S.A.
ENGLISH



FOREWORD

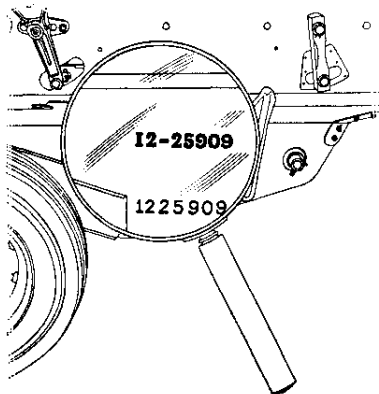
The purpose of this book is to supply useful harvesting information to owners and operators of John Deere No. 12-A "Straight-Through" Combines. This information should help in choosing the proper adjustment and special equipment required to meet each harvesting condition.

A Combine must be built to harvest a wide range of conditions. Average conditions can be handled by the standard equipment with which combine is shipped. However, unusual conditions may require some special equipment.

In addition to the standard equipment which comes with machine and the special attachments that are available at extra cost, it is sometimes necessary and advisable to make certain other equipment in the field, in order for machine to handle some unusual or purely local condition. This book contains suggestions for such special equipment. It must, of course be understood that these are only suggestions to help meet unusual situations, and therefore, they should be used only after trying all normal adjustment and recommended equipment.

Conditions vary, not only from year to year and section to section, but also from field to field. It is, therefore, obviously impossible to give definite rules for combine operation that will directly apply in every case. It is entirely possible that there are several solutions to any particular threshing problem. For this reason we give numerous suggestions, some of which may conflict. You can use the one that best suits your needs.

It is often necessary to settle on a compromise of adjustments to save the maximum amount of the crop. To illustrate, in a trashy condition where a large volume of straw stems, weed joints, etc., is being delivered to the cleaning unit along with the grain, it is advisable to open the chaffer and sieve a little wider and accept a slightly dirtier sample rather than to close the sieves and receive a cleaner sample but allow too much grain to pass out of machine with the blanket of trash.



SERIAL NUMBER

The Serial Number of your
Combine is

You will find the serial number
stencilled and stamped on the
L. H. side of separator just above
the clean grain auger housing.
Write the number in the above
space.

Date Purchased, 19....

INDEX

	<i>Page</i>
Auger Housing, Perforated Connections.....	75
Beater, Behind Cylinder.....	56-59
Beater, To Remove.....	58
Beater, Replacing Shaft.....	59
Beater Speed Adjustment.....	20, 56
Beater Teeth Covers.....	20, 56-57
Beater Teeth Covers, To Remove.....	57
Beater, Two Operating Positions.....	57-58
Beater Wrapping.....	145
Breaking in the New Combine.....	16
Canvases, Care of.....	38
Canvases, Catching or Stopping.....	140
Canvases, Operating Suggestions.....	39
Canvases, To Shorten.....	39
Canvas Rollers Binding.....	140
Chaffer, Adjustable.....	69
Chaffer, Adjustable, To Remove.....	69
Chaffer Extension, No-Choke.....	73
Chaffer Setting.....	20
Chains.....	82
Chart, Speeds of Various Units.....	78
Clean Grain Elevator.....	74-75
Cleaning Fan.....	67-68
Cleaning Fan Blast Adjustment.....	67
Cleaning Fan Sheaves, Regular and Special.....	67
Cleaning Fan Windboard.....	68
Cleaning Fan Valves.....	68
Cleaning Units.....	66
Cleaning Shoe.....	69-73
Cleaning Shoe, Dividers for Sloping Land.....	72
Cleaning Shoe, Grain "Going Over".....	147
Cleaning Shoe Overloaded.....	146-147
Cleaning Shoe, Special Equipment.....	72-73
Cleaning Shoe, To Remove.....	70-71
Cleaning Troubles.....	146-147
Concave Rasp Bar.....	52
Conveyor Chain Below Straw Rack, Care of.....	65
Combine Operating Adjustments.....	24
Combining Various Crops.....	89-138
Alfalfa.....	103-108
Barley.....	89-91
Beans, Baby Lima.....	95-96
Beans, Black-Eye.....	96

<https://www.ebooklibonline.com>

Hello dear friend!

Thank you very much for reading.

Enter the link into your browser.

The full manual is available for immediate download.

<https://www.ebooklibonline.com>

INDEX—Continued

	<i>Page</i>
Combining Various Crops—Continued	
Beans, Edible.....	92-98
Beans, Great Northern.....	96-97
Beans, Kidney.....	97
Beans, Navy.....	97
Beans, Pinto.....	97-98
Beans, Soy.....	99-102
Buckwheat.....	102-103
Clover.....	103-111
Clover, Alsike.....	109
Clover, Big English.....	109
Clover, Crimson.....	109-110
Clover, Dutch.....	109
Clover, Fenugreek.....	110
Clover, Hop.....	110
Clover, Red.....	110
Clover, Sweet.....	111
Clover, Yellow Blossom.....	111
Crotalaria.....	111-113
Flax.....	113-117
Grass, Blue.....	121
Grass, Brome.....	121-122
Grass, Canary.....	122
Grass, Carpet.....	122
Grass, Crested Wheat.....	122-123
Grass, Fescue.....	123
Grass, Johnson.....	123
Grass, Millet.....	123
Grass, Orchard.....	124
Grass, Red Top.....	124
Grass, Rhodes.....	124
Grass, Rye.....	124-125
Grass, Seeds.....	117-125
Lespedeza.....	125-128
Millet, Hog.....	125
Mustard.....	128-129
Oats.....	130
Peas, Edible.....	92-98
Peas, Field.....	98
Peas, Scotch Green.....	98
Peas, Willets Wonder.....	98

INDEX—Continued

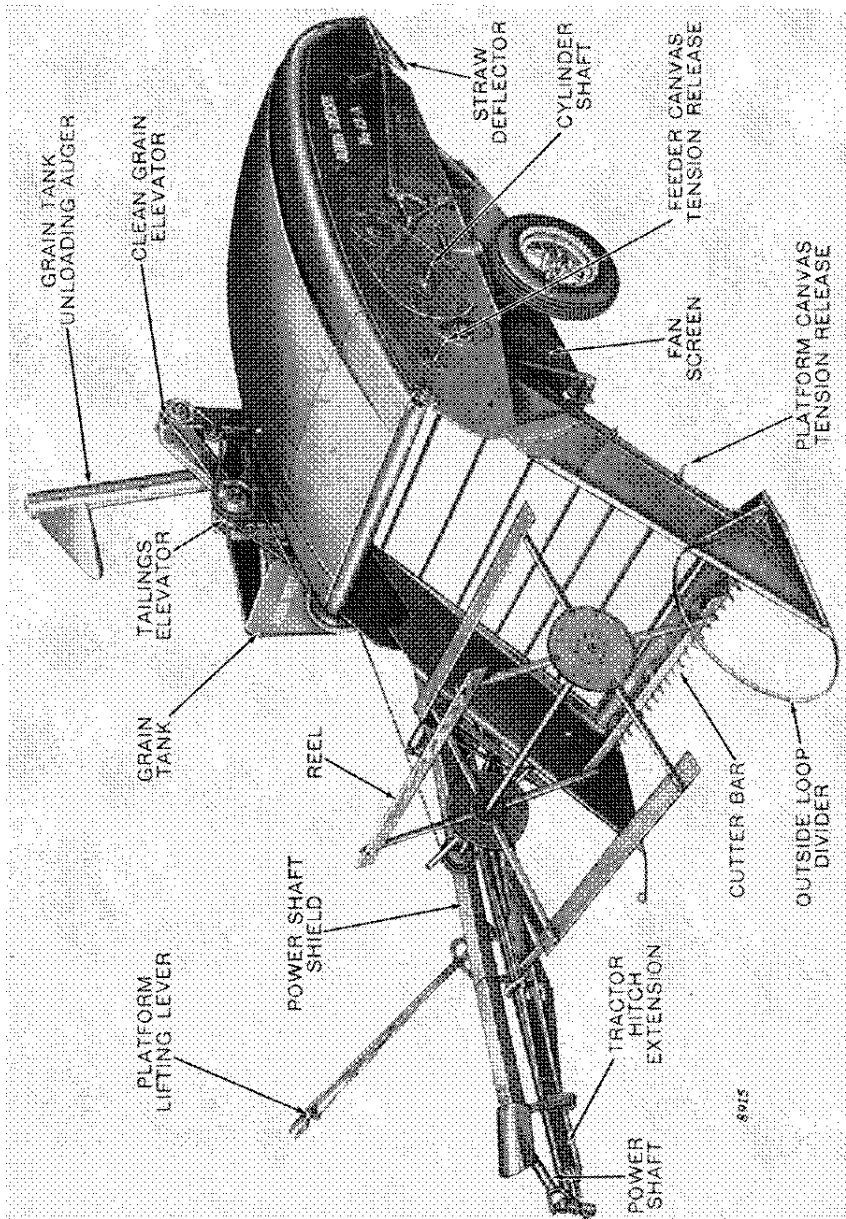
	<i>Page</i>
Combining Various Crops—Continued	
Proso.....	125
Radish Seed.....	130-131
Rye.....	131
Sorghums.....	131-134
Timothy.....	135-136
Wheat.....	137-138
Crops, Down and Tangled.....	142
Cross-Sectional View.....	22-23
Cutter Bar and Dividers.....	32-37
Cutter Bar, Care of.....	33-35
Cutter Bar Losses.....	141-142
Cutter Bar, Reinforcement.....	37, 126
Cutter Bar, Special Equipment.....	37
Cutting Troubles.....	140-142
Cylinder.....	41-51
Cylinder, Back Feeding.....	143-144
Cylinder, Cracking Grain.....	144-145
Cylinder, Extra Channel Bars.....	50
Cylinder, Extra Rasp Bars.....	51
Cylinder, Filler Blocks for Back Side of Rasp Bars.....	49
Cylinder Rasp Bars.....	46
Cylinder, To Remove.....	47-48
Cylinder, Slugging of.....	143
Cylinder, Slow Speed Attachment.....	49
Cylinder and Concave Spacing.....	20, 45-46
Cylinder Speeds.....	20, 41-44
Cylinder, Special Equipment.....	49-51
Deflector Curtains.....	60
Deflector Curtains, Operating Suggestions.....	60
Deflector Curtains, Two Positions.....	60
Divider.....	32-37
Divider, Extension.....	37
Divider, Inside Loop.....	36
Divider, Runner Shoe for Outside Divider.....	126
Divider, Special Equipment.....	36-37
Factory Settings.....	20
Feeder Canvas.....	40
Feeder Throat Adjustment.....	40
Feeding Troubles.....	142-143
Field Operation.....	85-87

INDEX—Continued

	<i>Page</i>
Foreword	Inside Front Cover
Fundamentals of Combine Harvesting	88
Grain Tank, Clean-Out Door	78
Grain Tank, Drain Plug	78
Grain Tank Unloading Auger	77-78
Grate	52-55
Grate, To Remove	53
Grate Inserts, To Install	53
Grate Insert Channels, Regular	52
Grate Insert Channels, Blank Steel, Special	54
Grate Inserts, Rubber Covered, Special	55
Guards, 1-1/2" Spaced	33, 126
Guards, Pick-Up	37
Heavy Draft	139-140
Limitations of Power Driven Combine	18
Lubrication	9
Lubrication Charts	9-15
Lubrication, Improper	139
Main Drive Gear Case	79
Main Drive Gear Case Lubrication	79
Main Wheel Bearing, Adjustment	140
Manual for Setting-Up	16
Operator's Instructions	18
Owner's Responsibility	19
Picking Up	87
Platform	38
Platform Canvas	38-39
Platform Lifting Parts	32
Power Line	79
Preparation of Field	19
Rasp Bars, Cylinder	46
Reel Carrying Around Straw	141
Reel Operating Adjustments	25-31
Reel Operating Suggestions	27-28
Reel, Outer Support	30
Reel, Ratchet Type Rope Controlled	29
Reel Setting Adjustments	25
Reel, Six and Eight Slat Attachment	30-31
Reel, Special Equipment	29-31
Reel Speeds	25
Reel Sprockets, Special	25
Reel Squaring Adjustments	26
Reel Wrapping	140

INDEX—Continued

	<i>Page</i>
Rubber Tires, Care of.....	82
ScourKleen Screens.....	75-77
Separator Sheaves.....	21
Separator Speed, Basic.....	20, 21, 40
Serial Number, Location.....	Inside Front Cover
Service Chart.....	139-147
Setting-Up, Improper.....	139
Sickle, To Remove.....	35
Sickle, Lubrication of.....	35
Sickle, Register Adjustment.....	35
Sickle, Special Underserrated.....	126
Sieve, Adjustable.....	70
Sieve, Settings.....	20
Sieve, Special Equipment.....	72
Slip Clutches.....	79
Slip Clutch Adjustments.....	79
Storage of Combine.....	84
Sorghum, Topping Attachment.....	132
Sorghum, Protective Shields.....	132
Straw Rack.....	61-65
Straw Rack Fishbacks.....	62
Straw Rack Fishbacks, To Remove.....	62
Straw Rack, Loss.....	146
Straw Rack Operating Suggestions.....	64-65
Straw Rack Pitmans.....	64
Straw Rack, To Remove.....	63-64
Straw Rack, To Remove Section.....	64
Straw Rack Speed Adjustment.....	61
Straw Rack, Truss Rods.....	63
Tailboard.....	70
Tailings, Excessive.....	147
Tailings Elevator.....	74-75
Tailings Fingers.....	70
Tailings Finger Bar Adjustable, Special.....	73
Tailings Finger Wire Mesh Cover.....	73
Time to Start Combining.....	17
Threshing Troubles.....	143-146
V-Belts.....	80
V-Belts, Care of.....	81
V-Belts, Diagram.....	80
Windrow, When to.....	87
Windrowers, Types.....	86-87
Windrowing.....	85



Complete View of John Deere No. 12-A Combine

SPECIFICATIONS AND DATA

Distance Between Divider Points.....	72"
Length Cutter Bar.....	66"
Right or Left Hand Cut.....	Left
Sickle Front or to Side of Cylinder.....	Front
Header Hinged or Rigid.....	Hinged
Range Cutting Height.....	1-1/2"—40"
Canvas Conveyor or Spiral.....	Canvas
Width Canvas.....	59"
Reel, Ground or Power Drive.....	Ground
Reel Adjustable from Tractor Seat?.....	Optional
No. of Bats on Reel.....	4 (●●)
Type of Cylinder.....	Rasp
Width of Cylinder.....	60"
Diam. of Cylinder.....	15"
Speed Range of Cylinder.....	450—1625 R.P.M.
Width Thresher Rear.....	60"
Length Separator Surface.....	76" (†)
Type of Thresher.....	Unit Rack
Width and Length Chaffer and Cleaning Sieves.....	36" x 34"
Recleaner Available?.....	Yes
Power T-O or Engine Drive.....	Power Take-Off (***)
Drive to Cylinder.....	V-Belt
No. of Wheels.....	2
Tire Size, Main Wheels.....	6.50 x 16
Cylinder Bearings.....	New Departure (††)
Beater Bearings.....	Hyatt
Fan Bearings.....	Hyatt
Main Wheel Bearings.....	Timken
Length with Tractor Hitch.....	19' 4"
Width Over-All, Cutting.....	10' 8"
Width Over-All, Transport.....	10' 8"
Height Over Elevator.....	6' 8"
Capacity Grain Tank.....	20 Bu.
Shipping Weight, Standard Equipped.....	About 2900 Lbs.

† Measured in a straight line from center of cylinder shaft to point of discharge of straw.

†† Sealed Ball.

*** Engine Optional

●● Six and Eight Bat Optional.

IMPORTANT

Read carefully the instructions referred to on this page before starting to combine.

Lubricate your combine thoroughly and regularly. See grease charts pages 10 to 15, incl.

Keep your combine in good mechanical repair.

Slip clutches should be set tight enough to operate under load but to allow slipping should an overload occur. See page 79.

Don't overload. Vary your travel speed according to the volume of your crop. See page 18.

Be familiar with the fundamentals of combining. See page 88.

Break in your combine carefully. See page 16.

Don't start combining before your crop is ripe. See page 17.

If your crop is to be windrowed read pages 85 to 87, incl.

Be familiar with all operating adjustments. See pages 21 to 82, incl.

See pages 89 to 138, incl., for information on combining various crops.

Don't shift unloading auger drive lever without first disengaging power take-off. See page 77.

Take proper care of V-Belts. See pages 80 and 81.

Keep combine tires properly inflated. See page 82.

When the season is over store your machine with care. See page 84.

LUBRICATION

The economical and efficient operation of any machine is dependent upon regular and proper lubrication of all moving parts with a quality lubricant. Greasing is just as vital to the service life of farm machinery as is the use of proper lubricating oil in the crankcase of an automobile or tractor. Neglect leads to reduced efficiency, heavy draft, wear, break-down and costly replacement of parts.

Grease is not costly—bearings are expensive!!!

Keep main drive gear case filled with a good grade of gun grease.

Wheel bearings are packed with grease at the factory. They should be repacked at the beginning of each season.

Chains, sprockets and sickle should be oiled except when working in dry sandy conditions.

Oil all connections frequently.

Wipe dirt from fittings before greasing.

Lubricate all parts thoroughly but avoid excessive lubrication. Excessive lubrication will allow excess lubricant to drop onto belts, causing slippage.

A good grade of gun grease should be used.

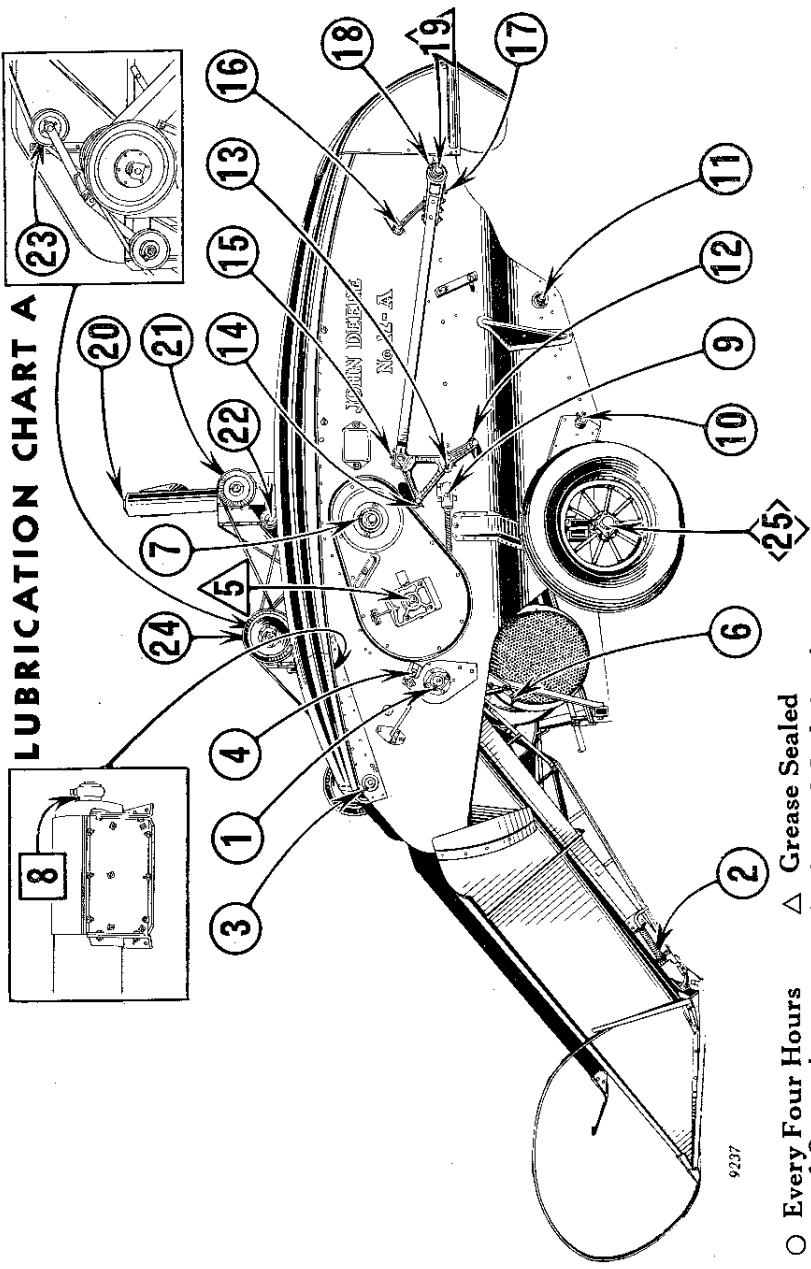
Replace all missing Zerk fittings immediately.

Do not overlook Zerk in right hand end of feeder canvas idler roller or the Zerk in platform canvas drive roller right hand bearing box. Both of these Zerk fittings must be greased through hole in platform canvas drive roller sheave.

LUBRICATION CHARTS

See the following pages for location of all fittings.

Important Note: The "Times Greased" column in the charts that follow applies to machines that have been thoroughly broken in. When the machine is new, lubricate the bearings often during the first few days of use.



LUBRICATION CHART A

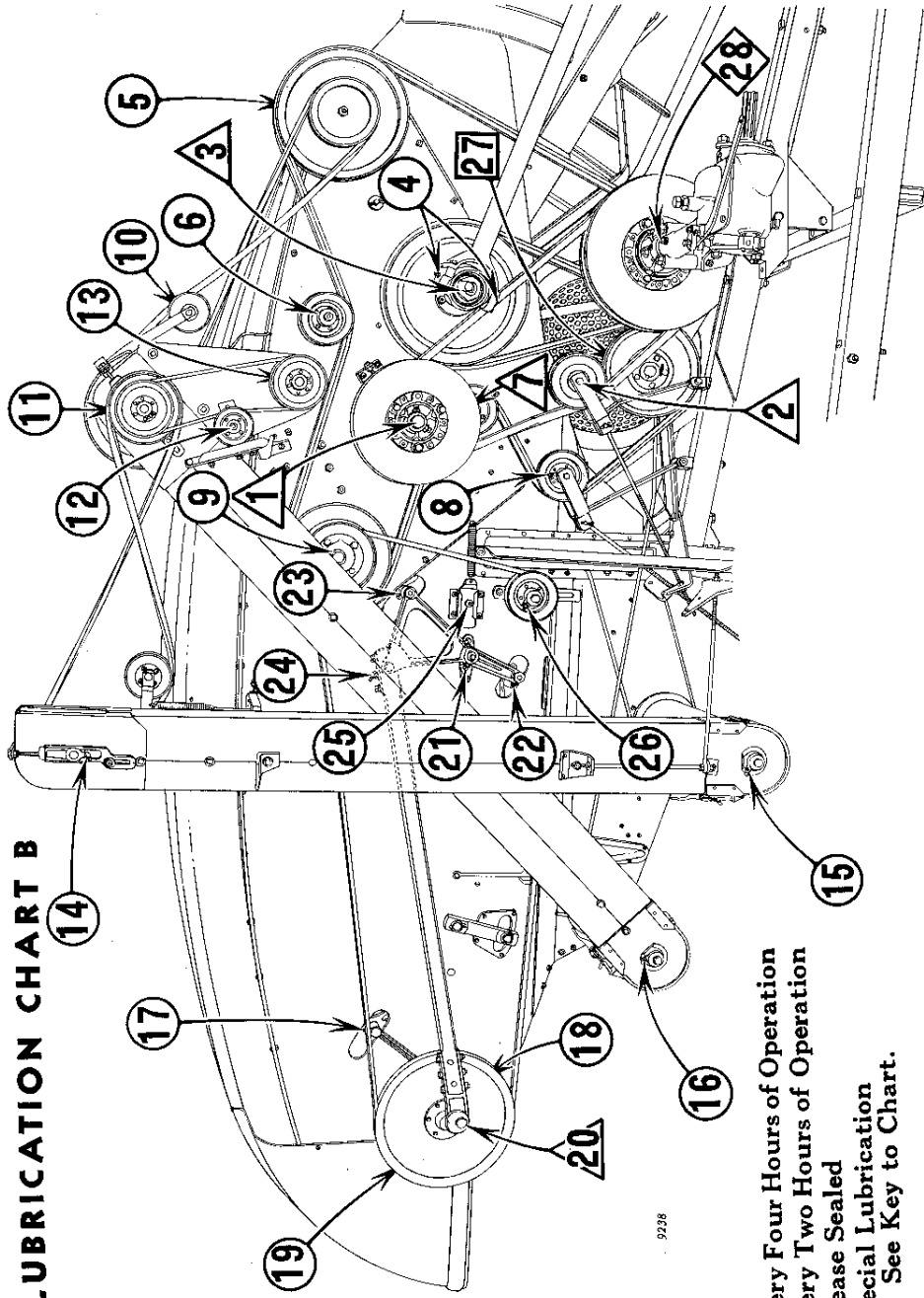
9237

- Every Four Hours of Operation
- ◻ Every Two Hours of Operation
- △ Grease Sealed
- ◇ Special Lubrication See Key to Chart.

KEY TO LUBRICATION CHART A

Location No.	Description	Times to Be Greased
1	Platform Canvas Drive Roller.....	Every Four Hours of Operation
2	Platform Canvas Idler Roller.....	" " " "
3	Feeder Canvas Drive Roller.....	" " " "
4	Feeder Canvas Idler Roller.....	" " " "
5	Cylinder.....	Grease Sealed
6	Cleaning Fan.....	Every Four Hours of Operation
7	Beater Behind Cylinder.....	" " " "
8	Tailings Distributing Auger.....	" " " "
9	Grain Conveyor Chain Tightener.....	" " " "
10	Clean Grain Auger.....	" " " "
11	Tailings Auger.....	" " " "
12	Shoe Rocker Arm, Front.....	" " " "
13	Straw Rack and Shoe Rocker Shaft.....	" " " "
14	Straw Rack Rocker Arm, Front.....	" " " "
15	Straw Rack Pitman, Front End.....	" " " "
16	Straw Rack Rear Hanger, Upper End.....	" " " "
17	Straw Rack Rear Hanger, Lower End.....	" " " "
18	Grain Conveyor and Straw Rack Drive Shaft.....	" " " "
19	Straw Rack Pitman, Rear End.....	Grease Sealed
20	Grain Tank Unloading Auger.....	Every Four Hours of Operation
21	Clean Grain Elevator (Upper End).....	" " " "
22	Clean Grain Elevator Drive Belt Tightener (Grain Tank Machine).....	" " " "
23	Clean Grain Elevator Drive Belt Tightener (Sacker Machine).....	" " " "
24	Tailings Elevator (Upper End).....	" " " "
25	Main Wheel.....	Once Each Season

LUBRICATION CHART B



9226

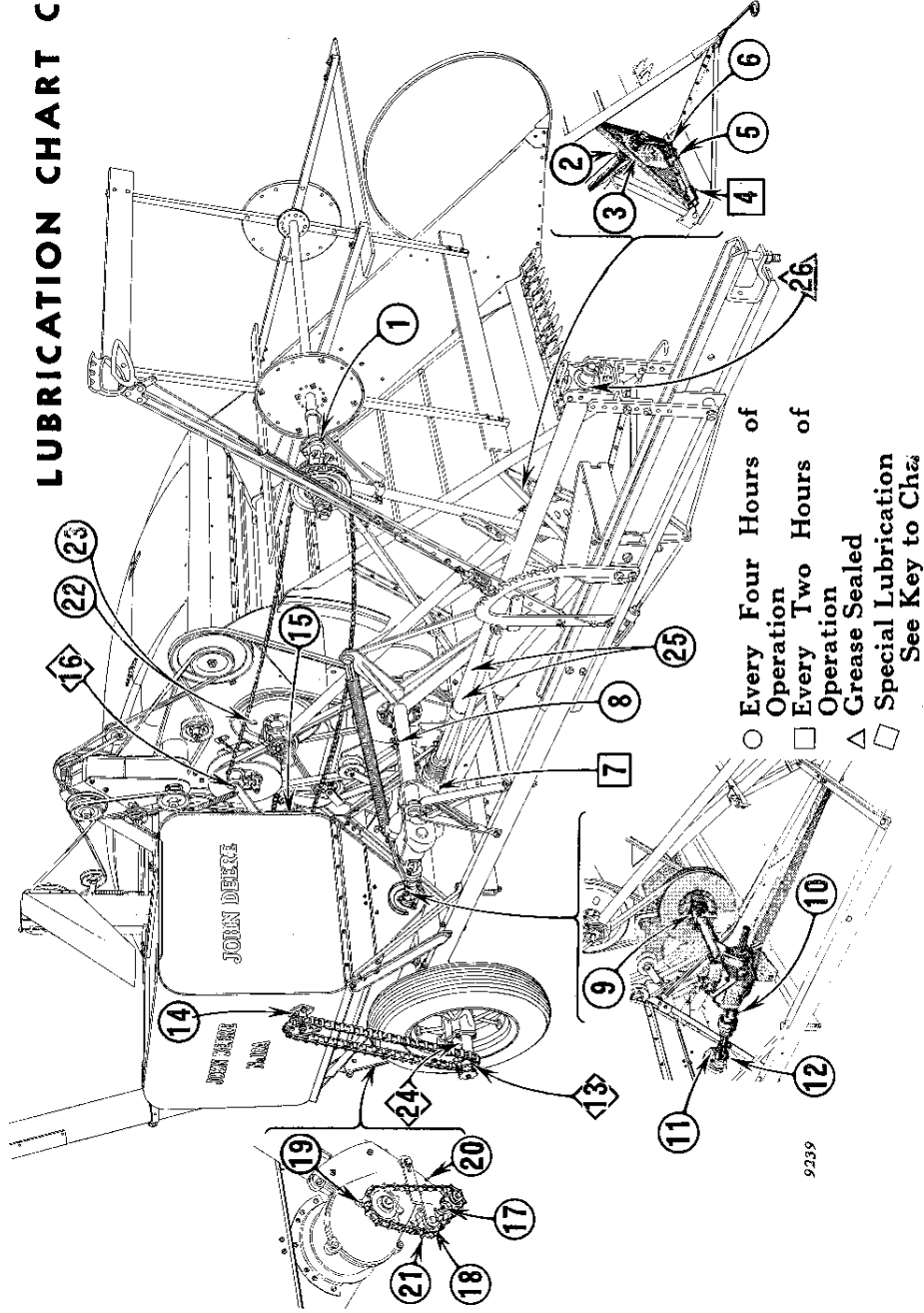
- Every Four Hours of Operation
 - Every Two Hours of Operation
 - △ Grease Sealed
 - ◇ Special Lubrication
- See Key to Chart.

KEY TO LUBRICATION CHART B

Location No.	Description	Times to Be Greased
1	Cylinder.....	
2	Cylinder Drive Belt Tightener.....	Grease Sealed
3	Sickle Pitman Drive Pipe.....	Grease Sealed
4	Sickle Drive Eccentric.....	Grease Sealed
5	Feeder Canvas Drive Roller.....	Every Four Hours of Operation
6	Separator Drive Belt Idler, Upper.....	" " " "
7	Separator Drive Belt Idler, Lower.....	" " " "
8	Separator Drive Belt Tightener.....	Grease Sealed
9	Beater Behind Cylinder.....	Every Four Hours of Operation
10	Tailings Elevator Drive Belt Tightener.....	" " " "
11	Tailings Elevator (Upper End).....	" " " "
12	Tailings Distributing Auger Drive Belt Tightener.....	" " " "
13	Tailings Distributing Auger.....	" " " "
14	Clean Grain Elevator (Upper End).....	" " " "
15	Clean Grain Auger.....	" " " "
16	Tailings Auger.....	" " " "
17	Straw Rack Rear Hanger, Upper End.....	" " " "
18	Straw Rack Rear Hanger, Lower End.....	" " " "
19	Conveyor and Straw Rack Drive Shaft.....	" " " "
20	Straw Rack Pitman, Rear End.....	" " " "
21	Straw Rack and Shoe Racker Shaft.....	Grease Sealed
22	Shoe Racker Arm, Front.....	Every Four Hours of Operation
23	Straw Rack Racker Arm, Front.....	" " " "
24	Straw Rack Pitman, Front End.....	" " " "
25	Grain Conveyor Chain Tightener.....	" " " "
26	Straw Rack Drive Belt Tightener.....	" " " "
27	Cleaning Fan.....	Every Two Hours of Operation
28	Main Gear Housing.....	Check Every 60 Running Hrs.

NOTE:—Keep Main Gear Housing filled with good grade of gun grease

LUBRICATION CHART C



KEY TO LUBRICATION CHART C

Location No.	Description	Times to Be Greased
1	Reel Pipe, R. H.	Every Four Hours of Operation
2	Sickle Pitman Drive Pipe (Front End)	" " "
3	Platform Canvas Idler Roller	" " "
4	Knife Head Guide	Every Two Hours of Operation
5	Sickle Drive Ball Socket (Front)	Every Four Hours of Operation
6	Sickle Drive Ball Socket (Rear)	" " "
7	Universal (Before Main Drive Gear Case)	Every Two Hours of Operation
8	Lifting Arm Pivot Pipe	Every Four Hours of Operation
9	Cylinder Drive Shaft in Main Gear Housing	" " "
10	Slip Clutch on Grain Tank Auger Drive Shaft	" " "
11	Rear Drive Knuckle	" " "
12	Grain Tank Horizontal Auger	" " "
13	Reel Jack Shaft Drive Sprocket	Once Each Transporting
14	Reel Jack Shaft Driven Sprocket	Every Four Hours of Operation
15	Reel Drive Sprocket	" " "
16	Reel Drive Chain Tightener	Oil Occasionally
17	Grain Tank Unloading Auger Driven Sprocket	Every Four Hours of Operation
18	Grain Tank Unloading Auger Drive Chain Tightener Sprocket	" " "
19	Grain Tank Unloading Auger Drive Sprocket	" " "
20	Grain Tank Unloading Auger (Lower)	" " "
21	Countershaft under Boot of Grain Tank Unloading Auger	" " "
22	Platform Canvas Drive Roller	" " "
23	Feeder Canvas Idler Roller	" " "
24	Main Wheel	Once Each Season
25	Telescoping Square Shaft in Power Drive Pipe	Every Four Hours of Operation
26	Power Drive Line	Grease Sealed



Suggest:

If the above button click is invalid.

Please download this document

first, and then click the above link

to download the complete manual.

Thank you so much for reading

SETTING-UP AND BREAKING-IN THE NEW COMBINE

The Setting-Up Manual.

Almost all field troubles can be traced directly to improper setting-up and starting. It is, therefore, of the greatest importance that extreme care be taken to see that the machine is set up and started properly. To reduce transportation cost the combine is partially disassembled for shipment; in spite of this, John Deere Combines are more completely assembled at the factory than most combines.

The **Setting-Up Manual** should be followed very closely. The printed copy in the **Setting-Up Manual** should be read carefully. It is not always possible to illustrate the assembly of all units. In such cases, an explanation is given in the printed section. If you read and follow the directions given, there should be no trouble experienced due to the machine being improperly set up.

Breaking-in the New Combine.

After the setting-up is completed, the entire machine should be gone over and bolts tightened. All bearings should be generously lubricated. (See grease charts on pages 10 to 15, incl.)

All V-belt drives should be checked carefully with the diagram stickers on the side of the machine. (Belts are also shown on page 80.) Belts should be tight enough to eliminate slippage because a belt can be very quickly ruined if it is allowed to slip in the grooves of a sheave for any length of time. Be sure all shafts turn freely.

Platform and feeder canvases should be installed before the combine is run off.

The clean-out doors in the bottom of the clean grain and tailings elevators, and grain tank unloading auger (see Figures 66 and 70), should be opened. Run combine slow for some time to allow the parts to work in gradually. After a short run at idling speed, stop combine and inspect completely, making a careful check for loose bolts, heating bearings, binding parts, loose belts, etc. After a complete re-lubrication, the combine should again be started and run for a brief period at a slow speed. It should then be brought up to a tractor fast idle speed and operated at that speed for at least two hours, preferably longer. After this full-speed run-off, another careful check should be made for loose bolts, heating bearings, etc. New belts will stretch slightly after the first run-off and tension should be increased.

Remember, the breaking-in period is just as important with a new combine as it is with a new automobile. Don't try to "step it down to the floor" right at the start. If you do, trouble is sure to develop later.

<https://www.ebooklibonline.com>

Hello dear friend!

Thank you very much for reading.

Enter the link into your browser.

The full manual is available for immediate download.

<https://www.ebooklibonline.com>