

JOHN DEERE
WORLDWIDE COMMERCIAL & CONSUMER
EQUIPMENT DIVISION

Mounted Spreader
LP3301

OMM159621 E9

OPERATOR'S MANUAL



JOHN DEERE

All information, illustrations and specifications in this manual are based on the latest information at the time of publication. The right is reserved to make changes at any time without notice.

COPYRIGHT© 2009
Deere & Co.

John Deere Worldwide Commercial and Consumer Equipment Division
All rights reserved
Previous Editions
COPYRIGHT©

North American Version
Litho in U.S.A.

INTRODUCTION

Introduction

Using Your Operator's Manual

Read this entire operator's manual, especially the safety information, before operating.

This manual is an important part of your machine. Keep all manuals in a convenient location so they can be accessed easily.

Use the safety and operating information in the attachment operator's manual, along with the machine operator's manual, to operate and service the attachment safely and correctly.

If your attachment manual has a section called Preparing the Machine, it means that you will have to do something to your tractor or vehicle before you can install the attachment. The Assembly and Installation sections of this manual provide information to assemble and install the attachment to your tractor or vehicle. Use the Service section to make any needed adjustments and routine service to your attachment.

If you have any questions or concerns with the assembly, installation, or operation of this attachment, see your local John Deere dealer or call John Deere Special Services at 1-866-218-8622 for assistance.

Warranty information on this John Deere attachment can be found in the warranty that came with your John Deere tractor or vehicle.

Product Identification

Product Compatibility

This spreader is designed for use with Select Series (X300 and X500) and Ultimate Series (X700) Lawn and Garden Tractors.

Safety

Read Safety in Machine Operator's Manual

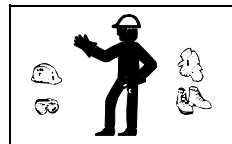
Read the general safety operating precautions in your machine operator's manual for additional safety information.

Operating Safely

- Read the machine and attachment operator's manual carefully. Be thoroughly familiar with the controls and the proper use of the equipment. Know how to stop the machine and disengage the controls quickly.
- This attachment is intended for use in lawn care and home applications. Do not use for use other than intended by the manufacturer.
- Do not modify machine or safety devices. Unauthorized modifications to the machine or attachment may impair its function and safety.
- Do not let children or an untrained person operate machine.
- Make any necessary adjustments before you operate. Never attempt to make any adjustments while the engine is running, unless if recommended in adjustment procedure.
- Look behind machine before you back up. Back up carefully.
- Do not let anyone, especially children, ride on machine or attachment. Riders are subject to injury such as being struck by foreign objects and being thrown off. Riders may also obstruct the operator's view, resulting in the machine being operated in an unsafe manner.
- Disengage any power to the attachment when the machine is transported or not in use.

Practice Safe Maintenance

- Only qualified, trained adults should service this machine.
- Understand service procedure before doing work. Keep area clean and dry.
- Do not operate the engine in a confined space where dangerous carbon monoxide fumes can collect.
- Never lubricate, service or adjust the machine or attachment while it is moving. Keep safety devices in place and in working condition. Keep hardware tight.
- Keep hands, feet, clothing, jewelry, and long hair away from any moving parts, to prevent them from getting caught.
- Disconnect battery or remove spark plug wire (for gasoline engines) before making any repairs.
- Keep all parts in good condition and properly installed. Fix damage immediately. Replace worn or broken parts. Replace all worn or damaged safety and instruction decals.
- Check all hardware at frequent intervals to be sure the equipment is in safe working condition.
- Do not modify machine or safety devices. Unauthorized modifications to the machine or attachment may impair its function and safety.



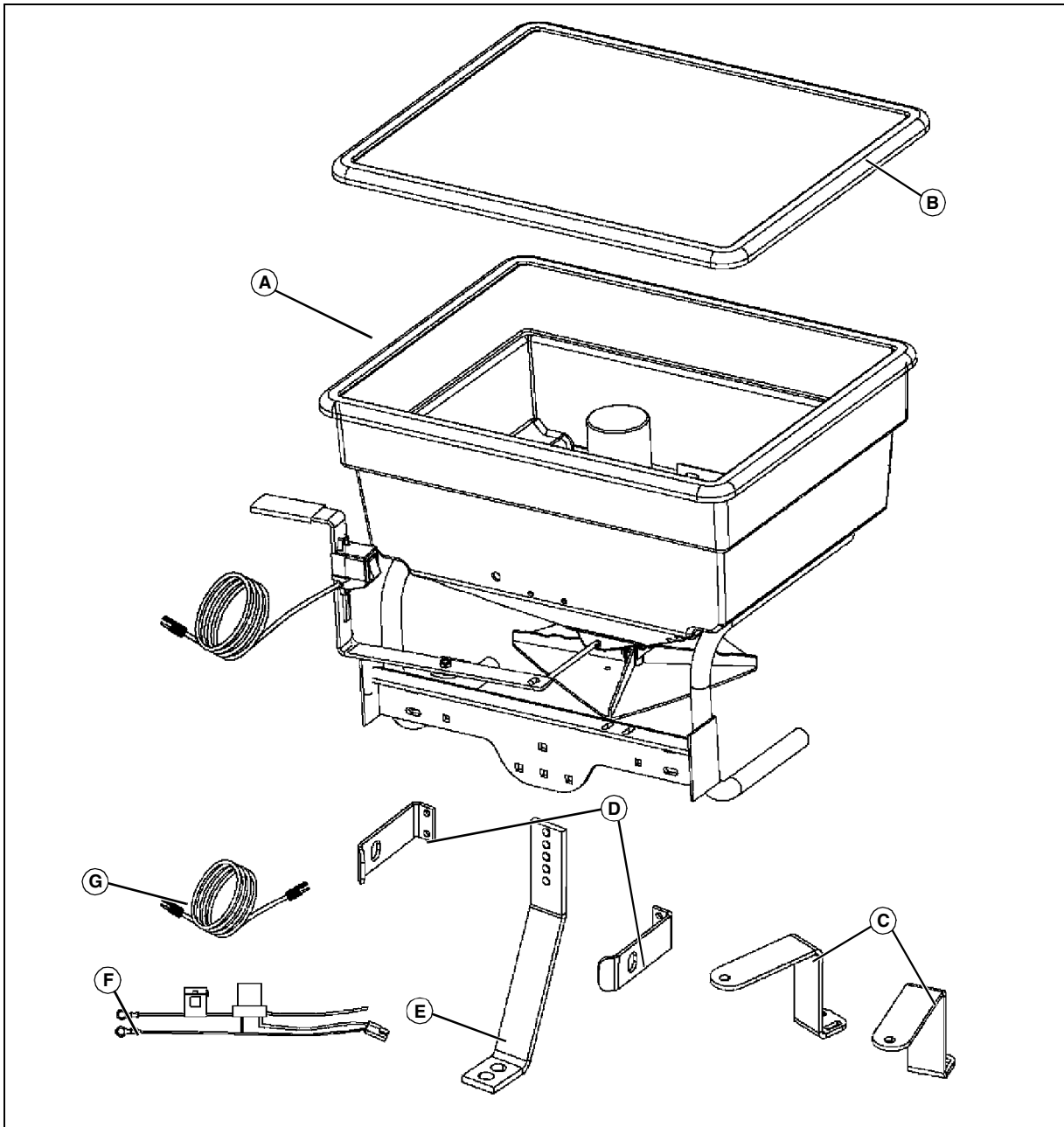
Wear Appropriate Clothing

- Always wear eye protection when operating the machine.
- Wear close fitting clothing and safety equipment appropriate for the job.
- While mowing, always wear substantial footwear and long trousers. Do not operate the equipment when barefoot or wearing open sandals.
- Wear a suitable protective device such as earplugs. Loud noise can cause impairment or loss of hearing.

ASSEMBLY

Assembly

Identify Parts



MX42404

Qty.	Description	Bag of Parts	Qty.	Description
1	Hopper Assembly (A)		1	Fuse Harness (F)
1	Cover (B)		1	Extension Harness (X700 Series) (G)
2	Mounting Bracket (700 Series) (C)		2	Stud, 3/8 in.
2	Mounting Bracket (300 and 500 Series) (D)		6	Carriage Bolt, 5/16 x 1 in.
1	Brace, Mounting (E)			

<https://www.ebooklibonline.com>

Hello dear friend!

Thank you very much for reading.

Enter the link into your browser.

The full manual is available for immediate download.

<https://www.ebooklibonline.com>

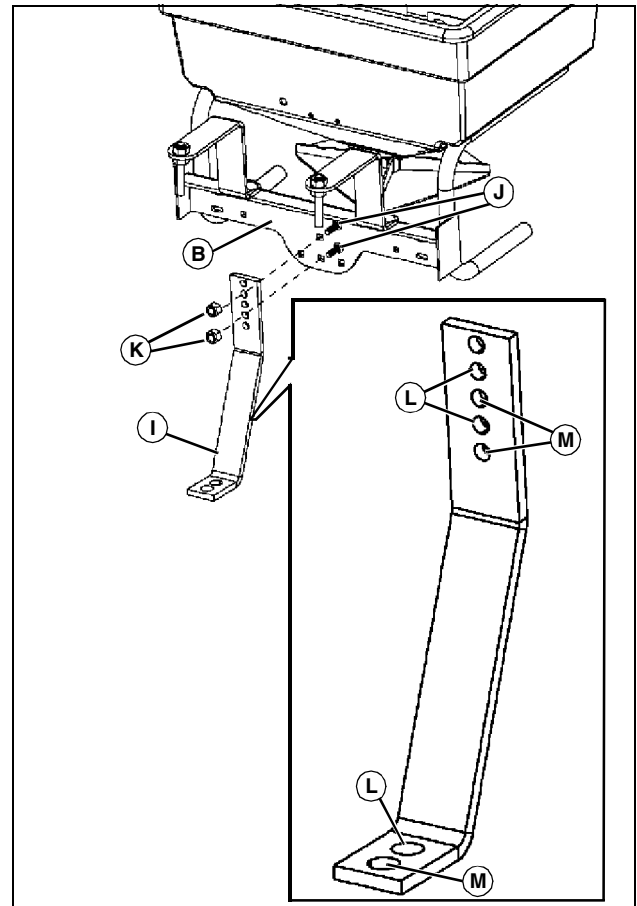
ASSEMBLY

MX42415

Qty.	Description
2	Carriage Bolt, 3/8 x 1 in.
1	Bolt, Hex, 3/4 x 2 in.
4	Locknut (keps), 3/8 in.
1	Nut, 3/4 in.
2	Locknut, 3/8 in.
6	Locknut (Nylon insert), 5/16 in.
1	Lockwasher, 3/4 in.
4	Washer, Flat, 5/16 in.
3	Clip, Wiring
1	Connector, Special Crimp
6	Tie Strap

1. Install both mounting brackets (A) loosely to the hopper frame (B) using two 5/16 x 1 in. carriage bolts (C), 5/16 in. flat washers (D), and 5/16 in. locknuts (E). Do not tighten locknuts at this time.
2. Install one 3/8 in. keps locknut (F) onto each 3/8 in. stud (G) as far as possible.
3. Install a 3/8 in. stud (G) from the bottom upward through both mounting brackets (A) and secure with one 3/8 in. keps locknut (H). Tighten hardware.

NOTE: Use inset below to determine holes used for X300 (L) and X500 (M) series.



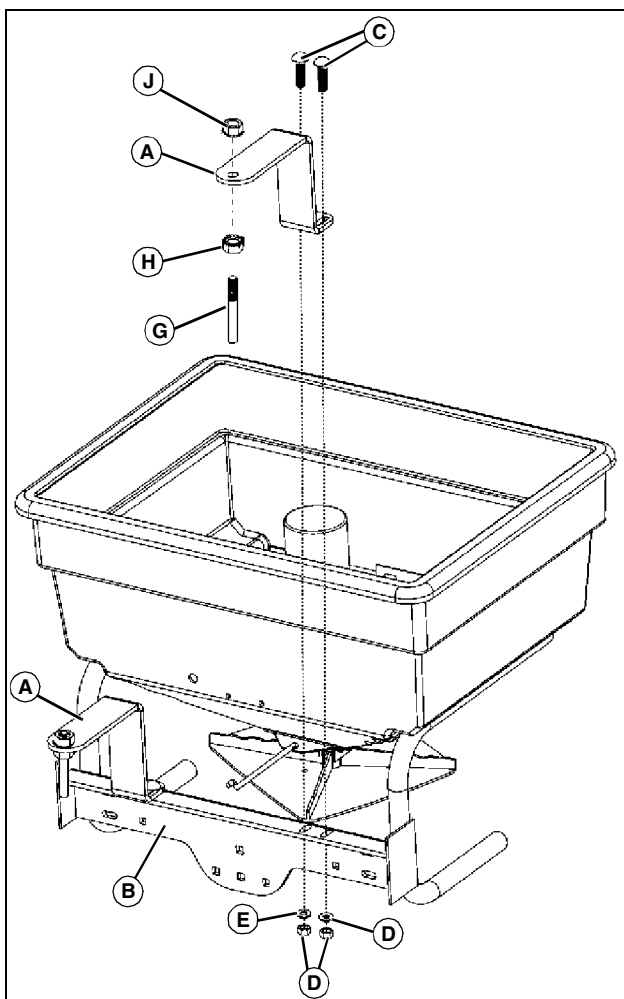
MX42416

4. Attach support brace (I) loosely to the hopper frame (B) using two 3/8 x 1 in. carriage bolts (J) and two 3/8 in. locknuts (K). Do not tighten locknuts at this time.

Install Mounting Brackets

X300 and X500 Series Models

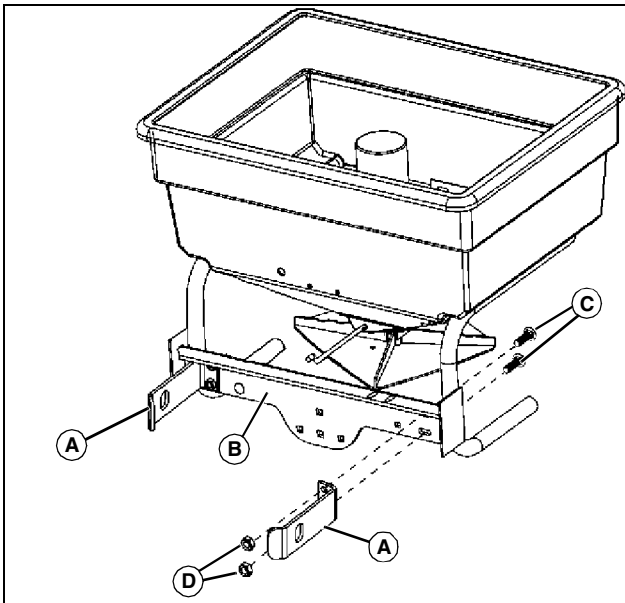
NOTE: If this is the initial assembly, adjust and tighten hardware on mounting brackets and threaded stud nuts after hopper is installed on machine.



ASSEMBLY

X700 Series Models

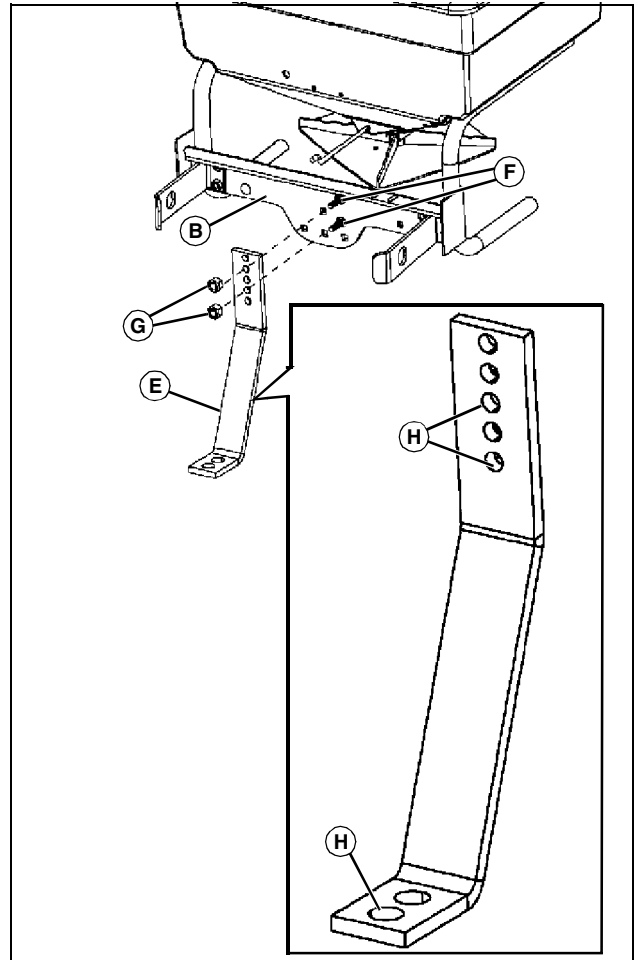
NOTE: If this is the initial installation, adjust and tighten hardware on mounting brackets after hopper is installed on machine.



MX42418

1. Install both mounting brackets (A) loosely to the hopper frame (B) using two 5/16 x 1 in. carriage bolts (C) and 5/16 in. locknuts (D). Do not tighten locknuts at this time.

NOTE: Use inset below to determine holes (H) used for X700 series.

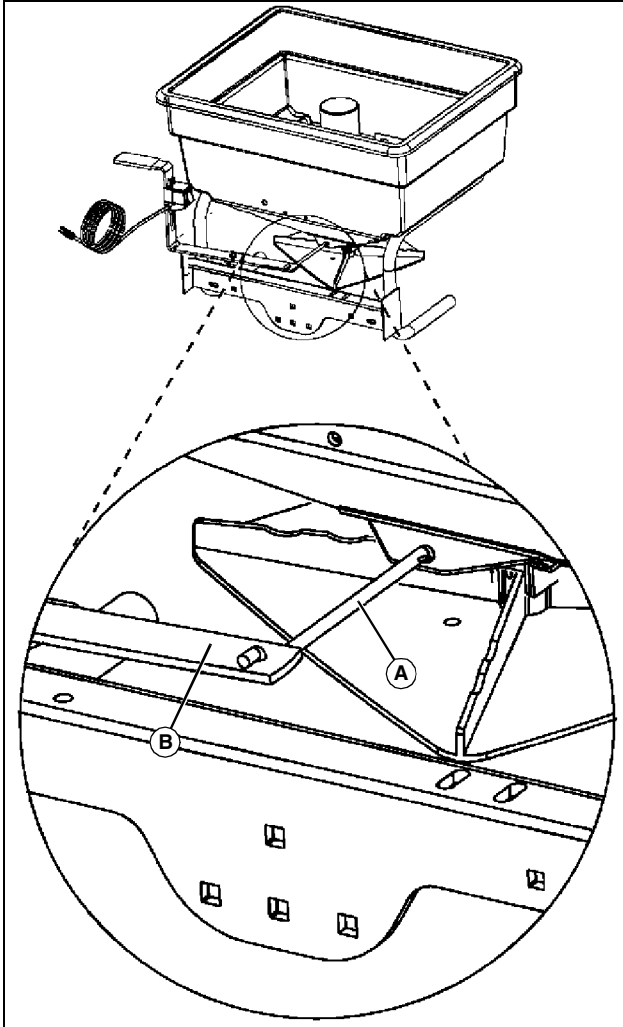


MX42419

2. Attach support brace (E) loosely to the hopper frame (B) using two 3/8 x 1 in. carriage bolts (F) and two 3/8 in. locknuts (G). Do not tighten locknuts at this time.

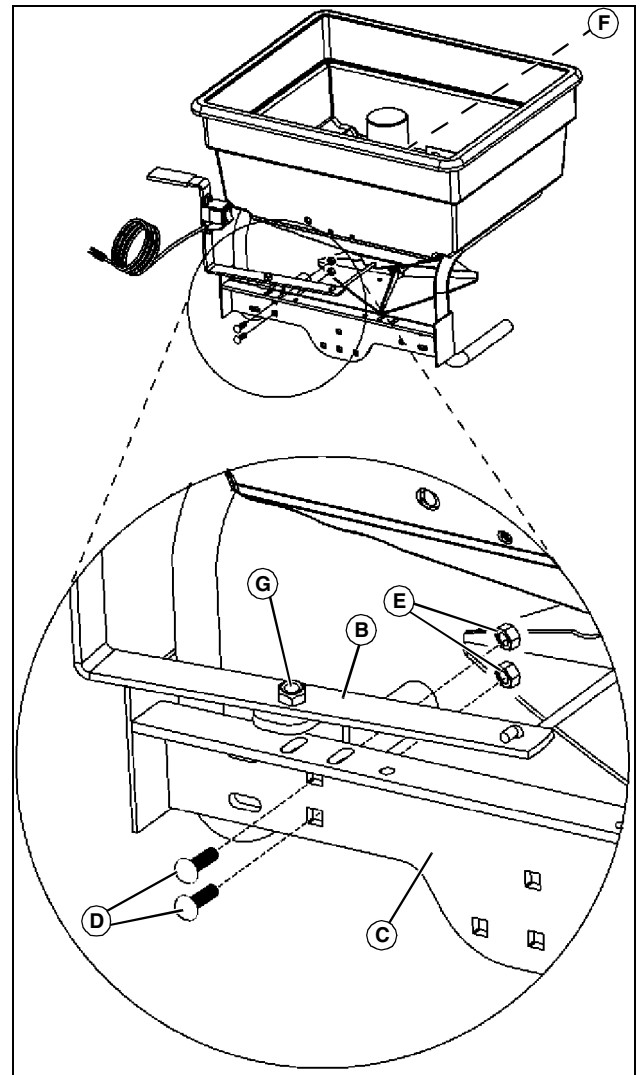
ASSEMBLY

Install On / Off Control Lever



MX42401

1. Install end of link rod (A) into hole on the end of control lever assembly (B).



MX42402

Picture Note: X300 and X500 mounting brackets installed earlier not shown for better view of parts.

2. Install the control lever assembly (B) to hopper frame (C) with two 5/16 x 1 in. carriage bolts (D), and 5/16 in. locknuts (E).

3. Check to make sure control lever fully closes and opens the rate gate (F) on bottom inside of hopper. If it does not, loosen locknut (G) slightly to allow easy movement.



Suggest:

If the above button click is invalid.

Please download this document

first, and then click the above link

to download the complete manual.

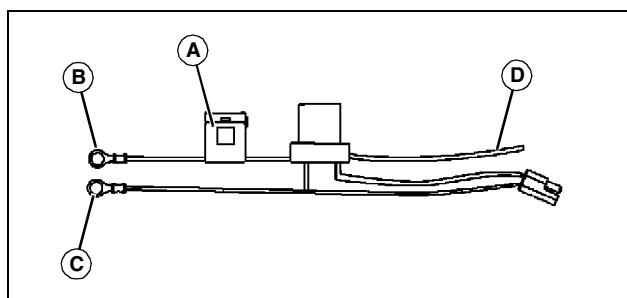
Thank you so much for reading

INSTALLING

Install Wiring Harness to Battery

CAUTION: Avoid injury! Contact with exposed electrical wires can cause sparks that could cause a battery to explode. Make sure all wires connected to the positive terminal of the battery are covered completely to prevent accidental contact with tools or other metal objects.

IMPORTANT: Avoid damage! To help prevent electrical spark, install red wire to the positive (+) battery terminal first. Then install black wire to negative (-) battery terminal. To prevent damage to wiring, make sure hood does not close on wires or connectors.



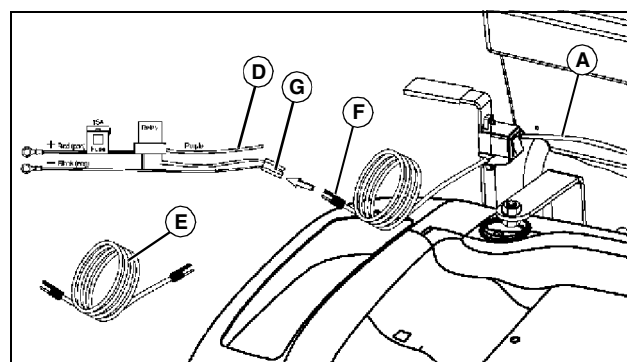
1. Fuse holder (A) on fuse harness should contain a 15 A / 32 V fuse. Make sure fuse filament is not broken.
2. Open machine hood.
3. Route the fuse harness to the battery.
4. Slide red battery boot off of positive battery cable, and remove nut from positive (+) battery cable clamp. Slide red lead from fuse harness through red battery boot, and install red lead (B) onto clamp bolt. Install and tighten nut completely, and slide red battery boot onto positive battery cable post.
5. Remove nut from negative (-) battery cable clamp. Install black lead (C) onto clamp bolt. Install and tighten nut completely.

X300 and X500 Series Models

- Find the red and white wire from the machine ignition cluster, determine the proper length, and cut purple wire (D) Attach using the provided special connector.

X700 Series Models

NOTE: The X700 series machines will need the harness extension (E) connected onto the switch harness connector (F) before connecting switch harness to fuse harness (G).



- Route the purple wire (D) with harness extension (E) inside starter harness and away from exhaust pipe on right side of machine back to the front of foot rest. Secure with tie straps.
- Find yellow wire from the machine ignition cluster and attach purple wire (D) using the provided special crimp connector.

Installing

Installing the Spreader

Ballasting Requirements

CAUTION: Avoid injury! The machine may become unstable when operating on slopes and/or with some attachments. Use weights to improve stability when operating on slopes or using attachments. Remove weights when not required.

X300 series model machines must be equipped with 16 kg (35 lb) front wheel weights.

X300 and X500 Series Models

1. Park machine safely. See "Parking Safely" in SAFETY Section.

<https://www.ebooklibonline.com>

Hello dear friend!

Thank you very much for reading.

Enter the link into your browser.

The full manual is available for immediate download.

<https://www.ebooklibonline.com>