

# JD24A and 125 Skid-Steer Loaders



JOHN DEERE

## OPERATORS MANUAL

JD24A and 125 Skid-Steer  
Loaders

OMM77699 A8 English

John Deere  
Lawn & Grounds Care Division  
OMM77699 A8

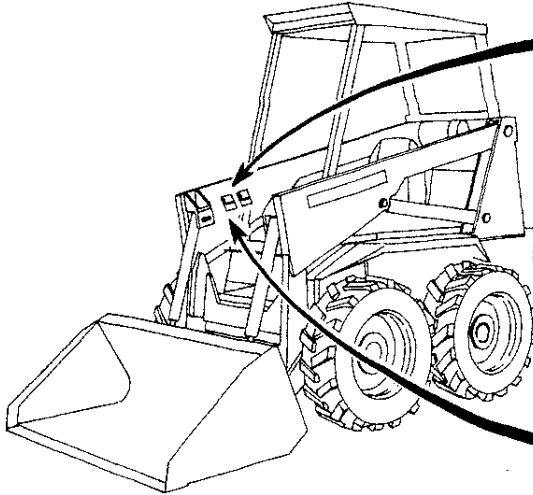
LITHO IN U.S.A.  
ENGLISH



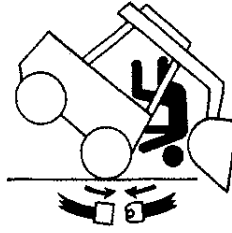
# Contents

	<i>Page</i>		<i>Page</i>
<b>Safety</b> .....	<b>1</b>	<b>Transporting</b> .....	<b>37</b>
<b>Controls</b> .....	<b>9</b>	<b>Service</b> .....	<b>38</b>
<b>Operating the Engine</b> .....	<b>11</b>	<b>Storage</b> .....	<b>61</b>
<b>Operating the Loader</b> .....	<b>14</b>	<b>Specifications</b> .....	<b>63</b>
<b>Fuels and Lubricants</b> .....	<b>27</b>		
<b>Troubleshooting</b> .....	<b>30</b>		

# Safety



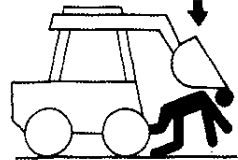
## ⚠ WARNING



### AVOID INJURY

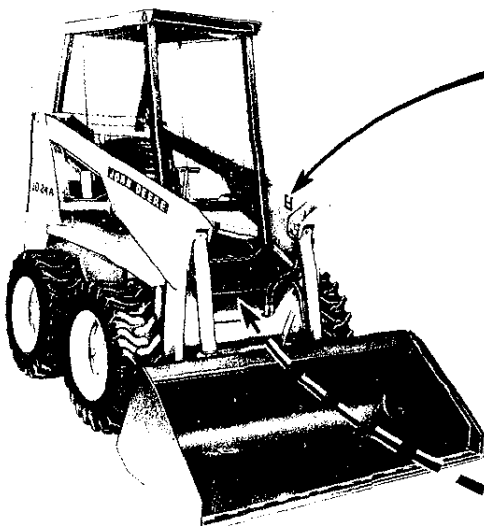
- Loader can move suddenly and violently
- Always wear seat belt

## ⚠ DANGER



### AVOID DEATH

- Before removing seat belt and leaving seat
- Lower lift arms to ground or rest lift arms on stops
  - Stop engine
  - Bumping foot pedal can cause lift arms to fall



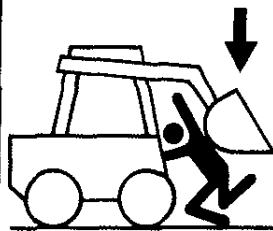
## ⚠ DANGER



### CRUSHING BY LIFT ARMS

- Do not reach over wheels and push pedals at same time
- Secure and lock raised lift arms
- Install Rollover Protective Structure (ROPS) with side screens

## ⚠ DANGER



### AVOID DEATH

- Secure and lock lift arms before cleaning or servicing

M60080 040288

**<https://www.ebooklibonline.com>**

Hello dear friend!

Thank you very much for reading.

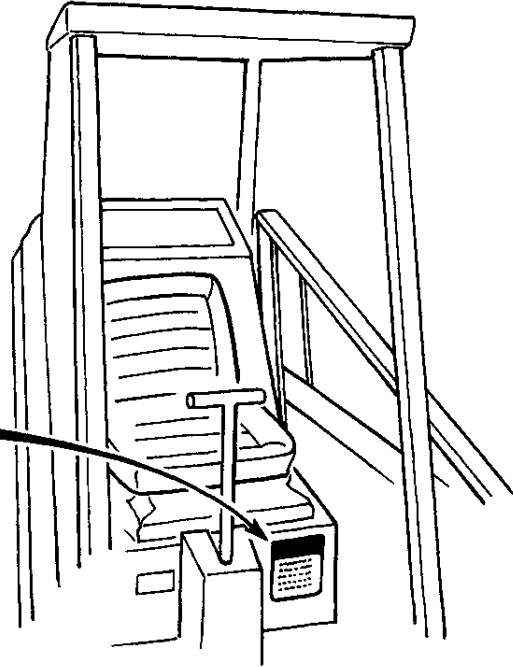
Enter the link into your browser.

The full manual is available for immediate download.

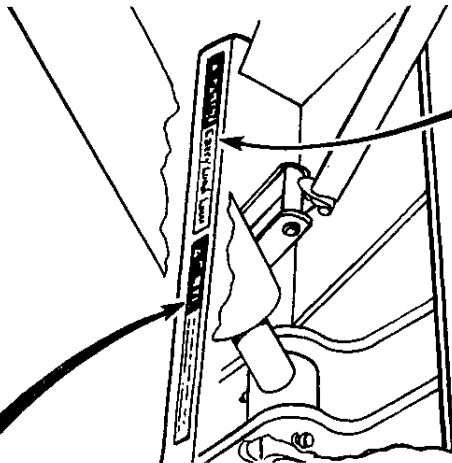
**<https://www.ebooklibonline.com>**

# ⚠ CAUTION

- 1 Read operator's manual before operating this machine.
- 2 Do not work under lift arms unless lift arm stops are engaged. Always engage lift arm stops if for any reason it is necessary to leave lift arms raised.
- 3 Do not operate unless ROPS side screens and safety shields are in place.
- 4 Do not mount or dismount this machine unless engine is shut off, bucket is lowered to the ground and parking brake is engaged.
- 5 Operate only from the operator's seat. Always fasten seat belt.
- 6 Do not start engine unless parking brake is set and steering and hydraulic controls are in neutral.
- 7 Load free falls when lift arms control pedal is fully depressed. Make sure area under lift arms is clear and be alert.
- 8 Never make sharp maneuvers with lift arms in raised position. Carry load low.
- 9 Travel slowly over rough terrain.
- 10 Level bucket as lift arms are raised to prevent spill into operator's compartment.
- 11 Never allow riders.
- 12 Do not tow to start engine or transport vehicle.



# ⚠ CAUTION Carry Load Low



# ⚠ WARNING

To avoid bodily injury from fall of raised lift arms, extend safety stops before walking or working under lift arms.

## RECOGNIZE SAFETY INFORMATION

This is the safety-alert symbol. When you see this symbol on your machine or in this manual, be alert to the potential for personal injury.

Follow recommended precautions and safe operating practices.



AB6:T81389 053;ALERT 160687

## UNDERSTAND SIGNAL WORDS

A signal word—DANGER, WARNING, or CAUTION—is used with the safety-alert symbol. DANGER identifies the most serious hazards.

Safety signs with signal word DANGER or WARNING are typically near specific hazards.

General precautions are listed on CAUTION safety signs. CAUTION also calls attention to safety messages in this manual.



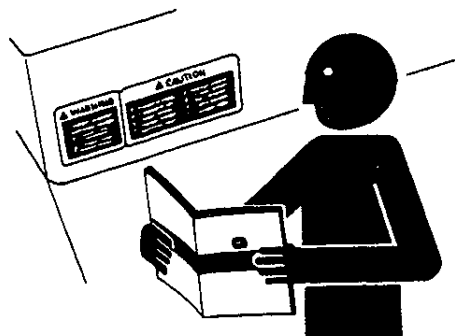
AB6:TS187 053;SIGNAL 071085

## FOLLOW SAFETY INSTRUCTIONS

Carefully read all safety messages in this manual and on your machine safety signs. Keep safety signs in good condition. Replace missing or damaged safety signs.

Learn how to operate the machine and how to use controls properly. Do not let anyone operate without instruction.

Keep your machine in proper working condition. Unauthorized modifications to the machine may impair the function and/or safety and affect machine life.

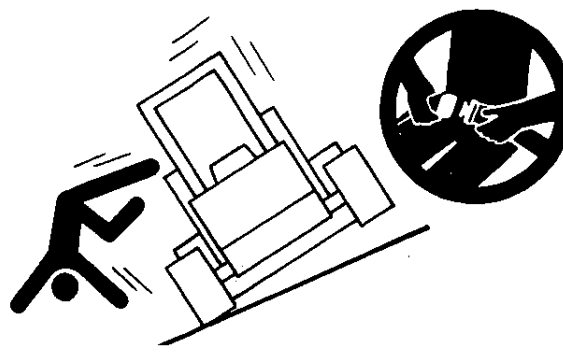


AB6:TS201 053;READ 230487

## USE SEAT BELT PROPERLY

Use a seat belt when you operate with a roll-over protective structure (ROPS) to minimize chance of injury from an accident such as an overturn.

Do not use a seat belt if operating without a ROPS.



M6007 AA5 040288

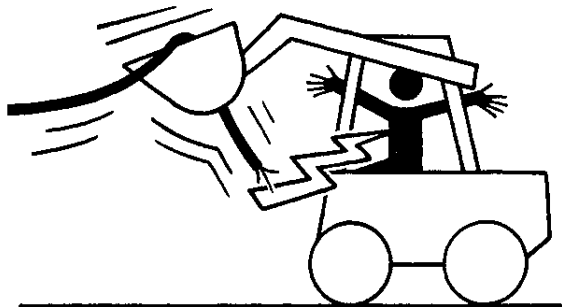
### OPERATE LOADER WITH CAUTION

Check location of cables, gas lines, and water mains before digging.

Keep loading area smooth.

Never lower a loaded bucket with the boom and bucket control lever in the float position. Keep load within SAE load limit.

Increase the power gradually when pulling a heavy load or when driving out of a ditch or excavation.



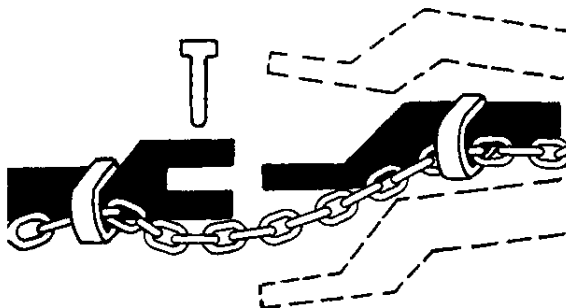
M60021 AA6 040288

### USE A SAFETY CHAIN

A safety chain will help control drawn equipment should it accidentally separate from the drawbar.

Using the appropriate adapter parts, attach the chain to the loader drawbar support or other specified anchor location. Provide only enough slack in the chain to permit turning.

See your John Deere dealer for a chain with a strength rating equal to or greater than the gross weight of the towed machine. Do not use safety chain for towing.



AB6;TS217 053;CHAIN 171287

### INSPECT MACHINE

Inspect your machine carefully each day by walking around it before you start it.



018;T6607AQ T82;BHS CL. 060188

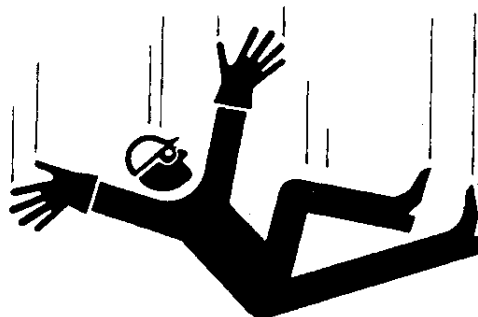
### USE HANDHOLDS AND STEPS

Maintain a three point contact with steps and handrails and face machine when getting on or off machine. Do not use controls as hand holds.

Never jump on or off machine or dismount a moving machine.

Be careful of slippery platforms, steps, and handrails.

Lower bucket to ground, apply brake, and stop engine before dismounting.



T6607AP AA9 040288

### PREPARE FOR EMERGENCIES

Be prepared if a fire starts.

Keep a first aid kit and fire extinguisher handy.

Keep emergency numbers for doctors, ambulance service, hospital, and fire department near your telephone.



AB6;TS186 053;FIRE2 080785

### HANDLE FUEL SAFELY—AVOID FIRES

Handle fuel with care: it is highly flammable. Do not refuel the machine while smoking or when near open flame or sparks.

Always stop engine before refueling machine. Fill fuel tank outdoors.

Prevent fires by keeping machine clean of accumulated trash, grease, and debris. Always clean up spilled fuel.



AB6;TS202 053;FIRE1 230487

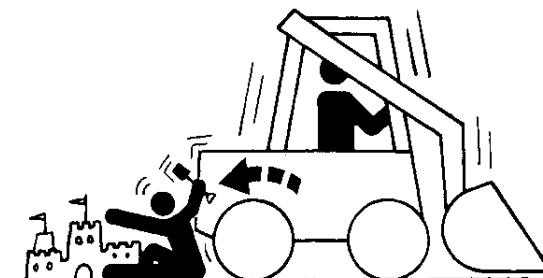
### PROTECT CHILDREN

Keep children and others away when you operate machine.

Before you back up or turn, look behind and around skid steer loader for children.

Do not let children operate loader.

Do not let children ride on loader or any attachment.



M60008 AA12 040288

### REMEMBER THE OTHER GUY

Never use a bucket or attachment for a work platform or personnel carrier.

Never move loads over the heads of other persons.

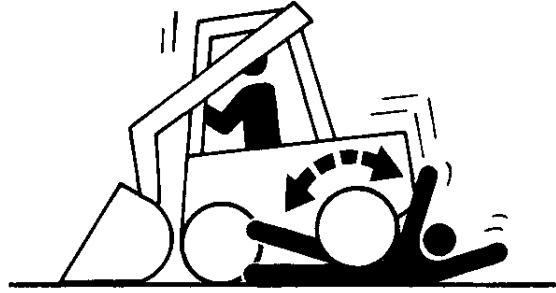


M60009 AA13 040288

### KEEP RIDERS OFF MACHINE

Only allow the operator on the machine. Keep riders off.

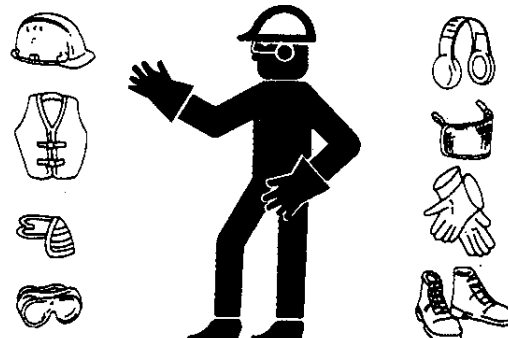
Riders on machine are subject to injury such as being struck by foreign objects and being thrown off of the machine. Riders also obstruct the operator's view resulting in the machine being operated in an unsafe manner.



M60010 AA14 040288

### WEAR PROTECTIVE CLOTHING

Wear close fitting clothing and safety equipment appropriate to the job.

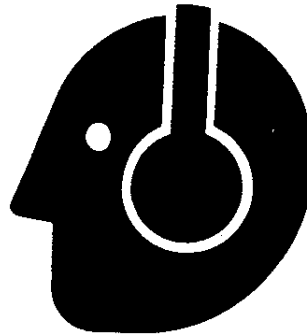


AB6;TS206 053;WEAR2 230487

### PROTECT AGAINST NOISE

Prolonged exposure to loud noise can cause impairment or loss of hearing.

Wear a suitable hearing protective device such as earmuffs or earplugs to protect against objectionable or uncomfortable loud noises.

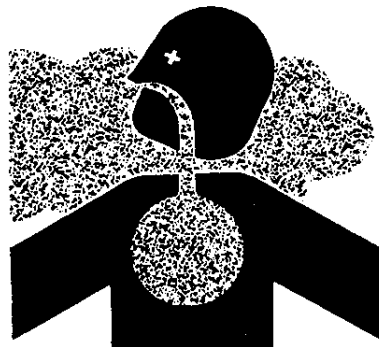


AB6;TS207 053;NOISE 230487

### BEWARE OF EXHAUST FUMES

Prevent asphyxiation. Engine exhaust fumes can cause sickness or death.

If you must operate in a building, be positive there is adequate ventilation. Either use an exhaust pipe extension to remove the exhaust fumes or open doors and windows to bring enough outside air into the area.



018;T6458AQ 02T;05 J9 151286

### PREVENT MACHINE RUNAWAY

Avoid possible injury or death from machinery runaway.

Do not start engine by shorting across starter terminals. Machine will start in gear if normal circuitry is bypassed.

NEVER start engine while standing on ground. Start engine only from operator's seat, with transmission in neutral or park.



M60010 AA18 040288

### PRACTICE SAFE MAINTENANCE

Never service moving machine. Keep away from driven parts. Disengage power and operate controls to release pressure. Lower equipment to ground.

Support equipment that must be raised to service.

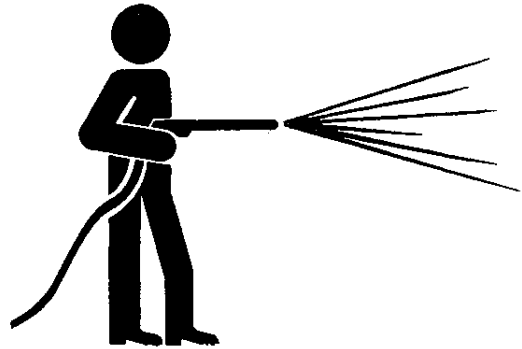
Keep parts in good condition and properly installed. Remove grease, oil, and debris.



M60075 AA19 040288

### CLEAN THE MACHINE REGULARLY

Remove any grease, oil or debris build-up to avoid possible injury or machine damage.



018:T6642EJ T82:FLSA AC 050188

### SERVICE COOLING SYSTEM SAFELY

**⚠ CAUTION:** Wait for engine to cool before releasing pressure in radiator cap. Loosen cap slowly to the stop.

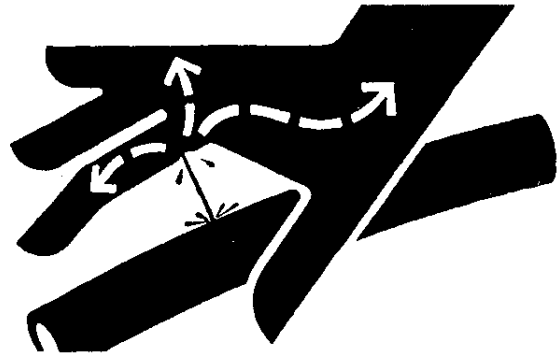


018:T6642EK 02T:05 K45 020987

### AVOID HIGH-PRESSURE FLUIDS

Escaping fluid under pressure can penetrate the skin causing serious injury. Relieve pressure before disconnecting hydraulic or other lines. Tighten all connections before applying pressure. Keep hands and body away from pinholes and nozzles which eject fluids under high pressure. Use a piece of cardboard to search for leaks.

If ANY fluid is injected into the skin, it must be surgically removed within a few hours by a doctor familiar with this type injury or gangrene may result.



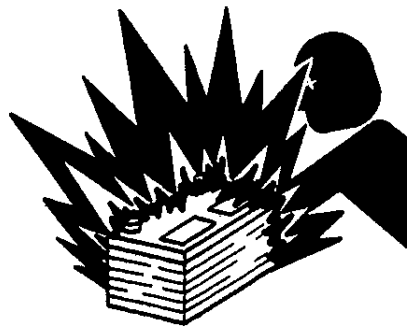
AB6:X9811 053;FLUID 180987

### BATTERY EXPLOSION

**CAUTION:** Battery gas can explode. Keep sparks and flames away from batteries.

Use a voltmeter or hydrometer only to check battery charge.

Remove ground (-) clamp first and install last. If a metal object touches ungrounded post and chassis at the same time a dangerous spark will result.

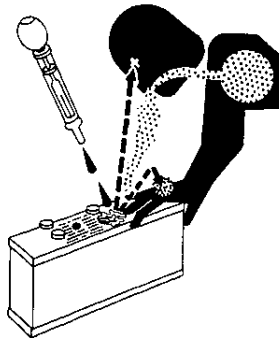


M60076 AA23 040288

### ACID BURNS

**CAUTION:** Sulfuric acid in battery is poisonous. It will burn skin, eat holes in clothing, and cause blindness. Wear eye protection and rubber gloves when filling batteries. Avoid breathing fumes.

Wash acid spills from skin and eyes. If swallowed, drink large amounts of water or milk. Then drink milk of magnesia, beaten eggs, or vegetable oil. Get medical attention immediately.



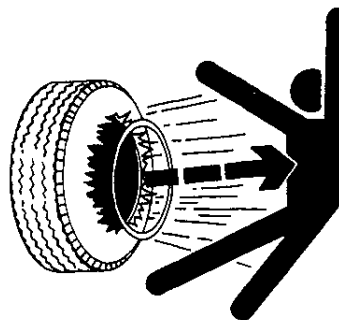
M60077 AA24 040288

### CHECK TIRE PRESSURE

**CAUTION:** Explosive separation of tire and rim can cause serious injury or death.

Have your John Deere dealer or qualified repair service mount tires.

Maintain correct pressure. Use a clip-on chuck and extension hose to allow you to stand to one side. Inspect tires and wheels daily.

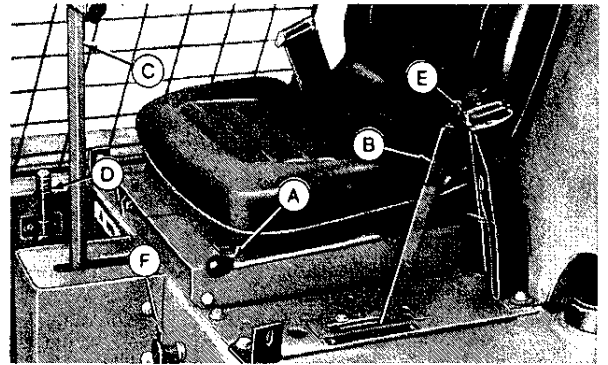


M60078 AA25 040288

# Controls

## HAND CONTROLS

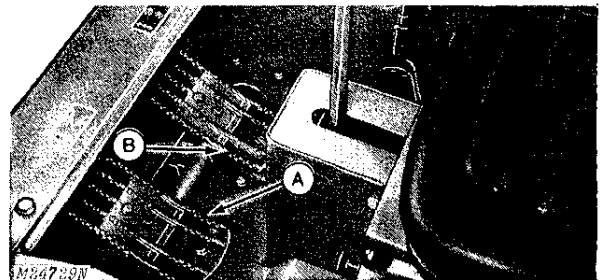
- A—Seat Adjustment Lever
- B—Throttle
- C—T-Bar Control Handle
- D—Parking Brake
- E—Seat Belt
- F—Choke (Gas) Air Shut-Off (Diesel)



M60029 AA26 040288

## FOOT CONTROLS

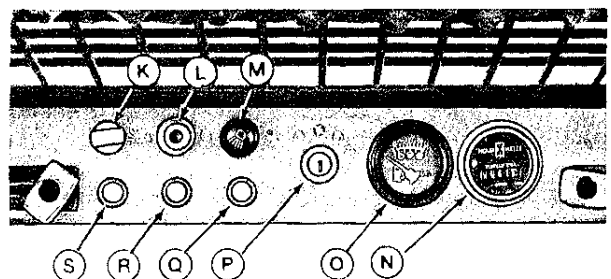
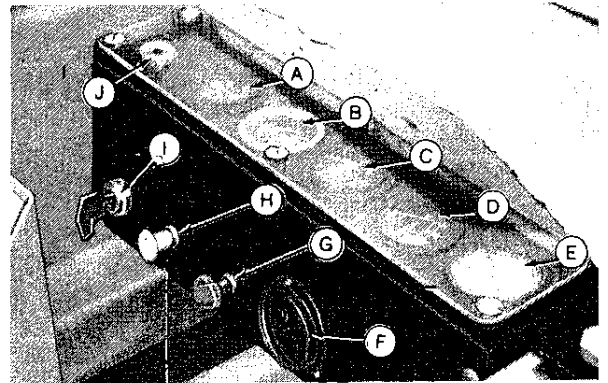
- A—Lift Arm Control
- B—Bucket Tilt Control



M60030 AA27 040288

## INSTRUMENT PANEL AND INDICATOR LIGHTS

- A—Alternator Ammeter
- B—Fuel Gauge
- C—Engine Coolant Temperature Gauge
- D—Oil Pressure Gauge
- E—Hydraulic Vacuum Gauge
- F—Hour Meter
- G—Flashing Light Switch
- H—Head and Tail Light Switch
- I—Key Switch
- J—Glow Plug Indicator
- K—Flasher Switch
- L—Glow Plug Indicator
- M—Light Switch
- N—Hour Meter
- O—Fuel Gauge
- P—Ignition Switch
- Q—Engine Temperature
- R—Oil Pressure Light
- S—Ammeter Light

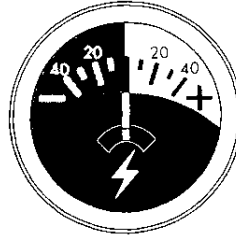


M60031, M60081 AA28 040288

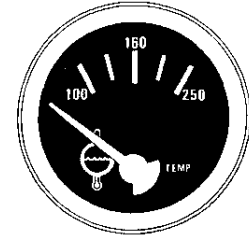
## Controls

**AMMETER:** Needle pointing straight up or in the (+) area, the alternator is charging. Needle pointing in the (-) area, with the engine running, stop the engine and determine the cause.

**ENGINE COLLANT GAUGE:** Gauge indicates engine coolant temperature. Coolant temperature should be 170°F (76.7°C) for diesel engines and 180°F (82°C) for gasoline engines.



Ammeter

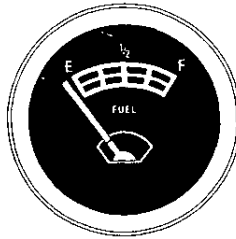


Engine Coolant  
Temperature Gauge

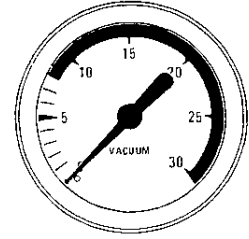
M60072 AA29 040288

**FUEL GAUGE:** Gauge indicates amount of fuel in the fuel tank. (E) indicates empty and (F) indicates full.

**HYDRAULIC VACUUM GAUGE:** Gauge indicates vacuum in inches of mercury at the hydraulic filters. Change hydraulic filters if needle is in red zone after 30 to 45 minutes of operation.



Fuel Gauge



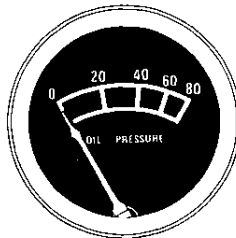
Hydraulic Vacuum  
Gauge

M60073 AA30 040288

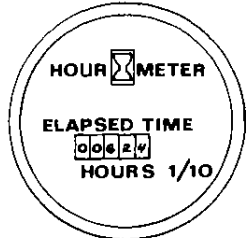
### OIL PRESSURE GAUGE:

The oil pressure gauge gives the oil pressure of the engine. When the engine is thoroughly warmed, the oil pressure for the diesel should be 65-80 psi (4-5 bar) (5-6 kg/cm<sup>2</sup>) at 2800 rpm and the gasoline between 30-40 psi (2-3 bar) (2-3 kg/cm<sup>2</sup>) at 2900 rpm.

**HOUR METER:** Indicates accumulated engine service in hours and tenths of hours.



Oil Pressure Gauge



Hour Meter

M60074 AA31 040285

# Operating the Engine

## PRE-OPERATING INSPECTION

Perform the following checks and services before starting the engine for the first time each day.

1. Check engine crankcase oil level.
2. Check radiator coolant level.
3. Inspect air cleaner.
4. Check tire pressure.

AA32 040288

## STARTING ENGINE

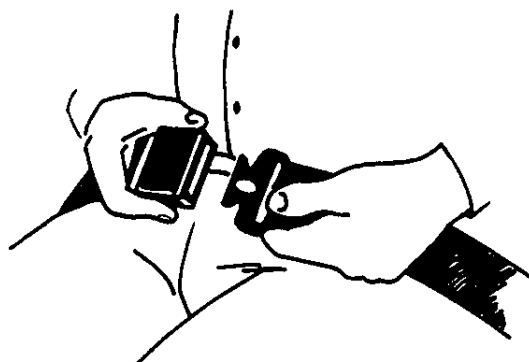
*NOTE: In persistent cold weather areas where temperatures below 0°F (-18°C) are expected, use cold weather starting aids available from your John Deere dealer.*

**⚠ CAUTION: Start engine ONLY outdoors or in a well-ventilated place. Exhaust fumes are dangerous.**

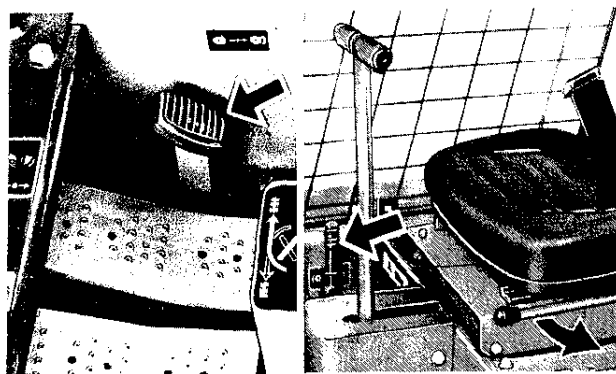
Be sure no one is near the loader when you start the engine.

1. Sit in the operator's seat and fasten the seat belt.
2. Set the park brake. (Pedal or lever.)
3. Place T-bar control in neutral position.

**⚠ CAUTION: Keep your feet off the pedals until the engine has been started.**

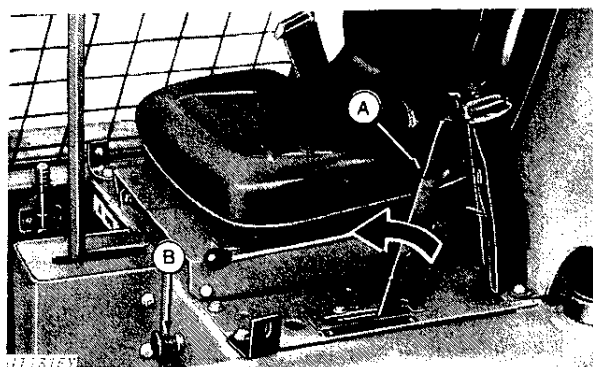


3A8;TS175 M21;0EXA AA33 040286



M66012/M60090, G11314YX AA35 040288

4. Move the throttle (A) half open (diesel engine) and one-quarter open (gasoline engine).
5. Push the air shut-off control (B) in for diesel engine. Pull choke (B) out all the way and hold for gasoline engine.



M60091 AA35 040288

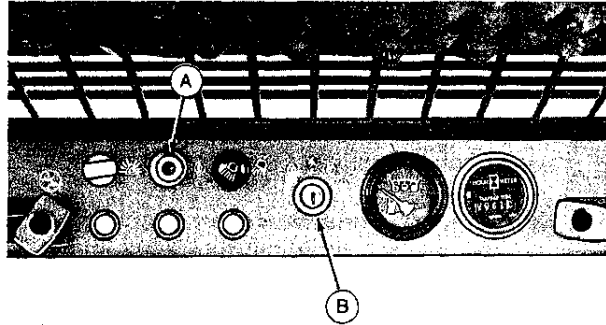
## Operating the Engine

**IMPORTANT:** Do not operate starter for more than 30 seconds at a time or you may damage starter. Wait 2 minutes before you try again.

6. Turn key (B) counterclockwise (diesel engine) until glow plug indicator (A) glows. Turn key clockwise to start engine. Turn key (B) clockwise (gasoline) to start engine.

*NOTE: Release choke when engine starts (gasoline).*

7. Observe all lights and gauges.



M60082 AA36 040288

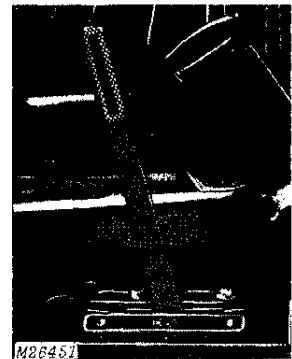
## WARMING ENGINE

Run engine at half throttle for several minutes. Avoid unnecessary slow idling.

**CAUTION:** If hydraulic oil is cold, hydraulic functions move slowly. Do not attempt normal loader operation until hydraulic functions move at close-to-normal speed.

**IMPORTANT:** During cold weather steering and lift controls may be sluggish. When temperature is below 32°F (0°C), run the engine at half throttle for 5 minutes with steering controls in neutral position and bucket on ground. Do not use hydraulic controls until oil is warm.

Operate hydraulic functions at slower speeds and lift lighter loads until unit is at operating temperature.



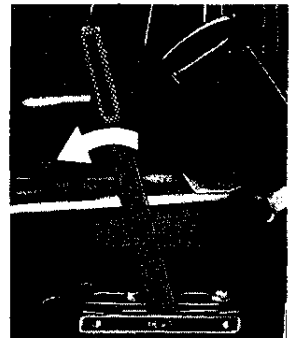
M26451 AA37 040288

## OPERATING ENGINE UNDER LOAD

Run engine at full throttle for most efficient loader operation.

When you are working loader hard:

Do not lug engine.



M60013 AA38 040288

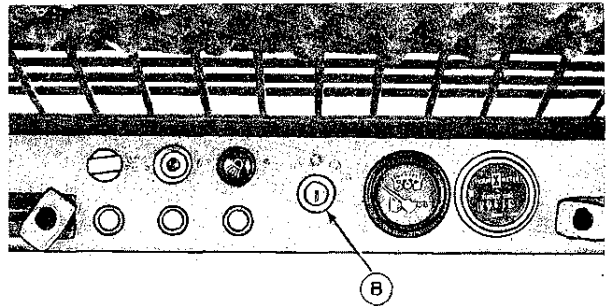
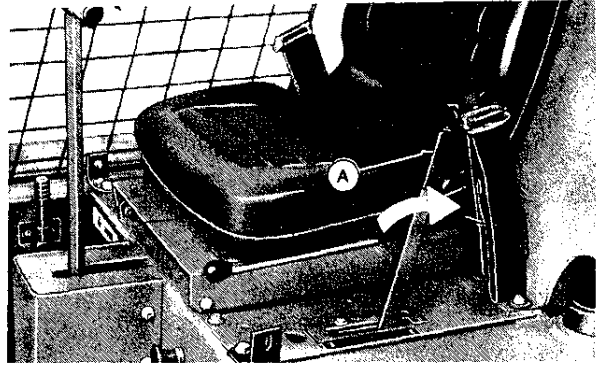
## Operating the Engine

### STOPPING ENGINE

1. Stop the loader on a level area.
2. Place T-bar control handle in neutral position.

**IMPORTANT:** If engine has been running hard and is hot, do not stop engine immediately. Remove load from engine. Run engine at 1/3 to 1/2 throttle for several minutes to cool engine.

3. Pull throttle lever (A) to slow idle position.
4. Lower lift arms to ground.
5. Set park brake.
6. Turn key (B) to "OFF" and pull the air shut-off control out to stop (diesel) engine. Turn key (B) to "OFF" position (gasoline).
7. Remove key (B).



M26460, M60083 AA39 040288

### PREPARING FOR HOT WEATHER

Check coolant level at start of each day's operation. Be sure radiator cap is tight.

Drain, flush, and refill the cooling system if needed.

Check governor (gas) and alternator belt tension at start of each day's operation.

Periodically check air cleaner indicator under dusty conditions.

AA40 040288

### PREPARING FOR COLD WEATHER

**IMPORTANT:** Never tow the loader to start the engine. This will damage hydrostatic drive parts.

Let the unit warm up 10 to 15 minutes to warm the hydraulic fluid. This will assure proper circulation of hydraulic fluid.

**IMPORTANT:** Racing or gunning the engine to shorten the warm-up period is very destructive to the engine in cold weather. In cold weather, operate the unit with partial load for the first 30 minutes.

Prior to cold weather, be sure to drain, flush and fill cooling system. When filling radiator, condition the system with a recognized brand of radiator sealer and add antifreeze solution.

AA41 040288

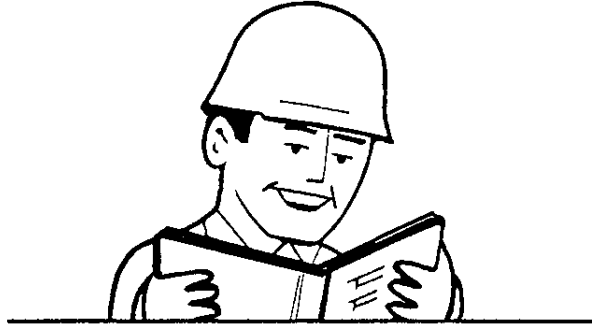
# Operating the Loader

## BEFORE OPERATING LOADER

**LOOK and FEEL:** Know location of controls and how they work.

**LOOK:** Inspect loader.

**LOOK:** All safety equipment must be in good condition and fastened in place.

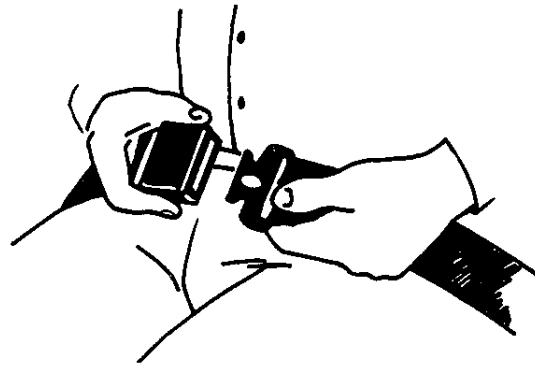


AB6;M35220 AA42 040288

**LOOK:** Walk around loader: be sure no one is near it.

**LOOK:** Hand rails, steps, floor should be clean. Remove loose items (tools, parts, etc.) from floor. Sit on operator's seat. Adjust seat.

**CAUTION:** Under certain operating conditions, operator may experience sudden violent movement. Fasten seat belt before you operate loader. Failure to do so may result in serious bodily injury or death.



3A8;TS175 AA43 040288

## PEDAL LOCKOUT OPERATIONAL CHECKOUT

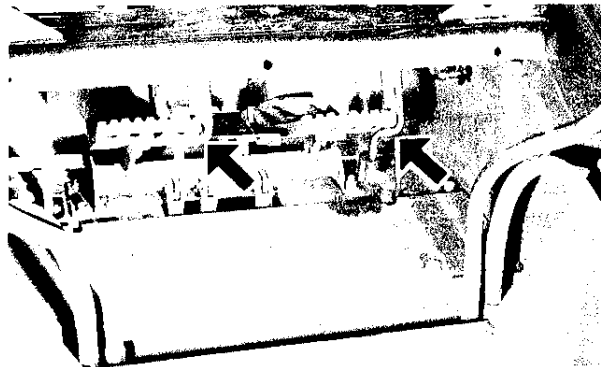
**CAUTION:** The pedal lockout when properly adjusted and maintained will prevent bucket control and lift arm control pedal movement when the operator stands up. See your John Deere dealer if adjustment is required.

**IMPORTANT:** Pedal lockout is available on the following skid-steer loaders:

125 Skid Steer Loaders (SN: 10001-120000)

JD24A Skid Steer Loaders (SN: 5001-120000)

1. Loader should be on a level area.
2. Bucket on the ground.
3. Engine stopped.



Pedal Shield Removed For Clarity

4. Before mounting the loader, check the position of the left and right pedal lockout assembly. The notches on the pedal lockout assembly must hold the pedals in a locked position.

5. Mount the loader and stand in the operator's station. Feet off pedals and no weight on the operator's seat.

M60068 AA44 040288

## Operating the Loader

6. Press the left pedal in both directions without touching the pedal lockout assembly. Pedal must not move out of the lockout notch.

7. Press the right pedal in both directions without touching the pedal lockout assembly. Pedal must not move out of the lockout notch.

8. Sit in the operator's seat.

9. Fasten seat belt and LOCK park brake.

10. Start engine.

11. Move throttle to IDLE. Raise bucket SLIGHTLY (less than 4 inches off the ground).

12. Slowly press lift arm pedal until it reaches stop (A). Push left foot forward against lockout assembly (B) until pedal moves into FLOAT.

13. Raise bucket SLIGHTLY again.

14. Put both feet on raised FOOTRESTS. DO NOT TOUCH PEDALS.

15. Unfasten seat belt.

16. Slowly stand up. All weight must be off seat.

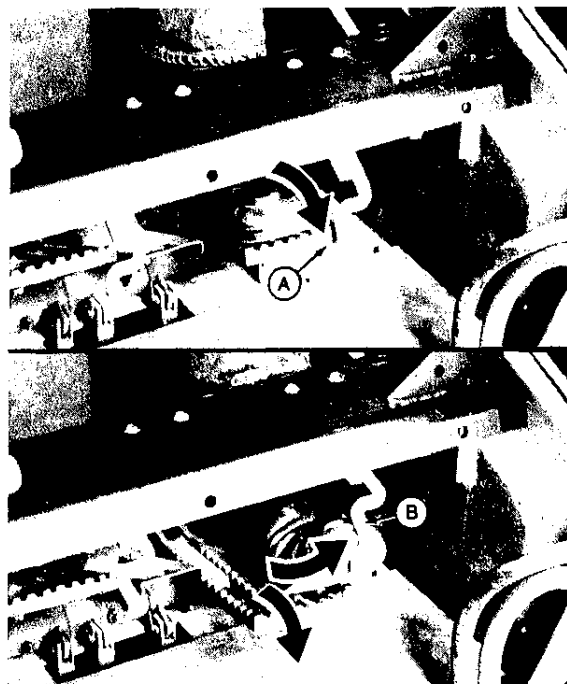
17. Slowly press lift arm control pedal in both directions. Lockout assembly must keep pedal from moving in both directions.

18. Slowly press bucket control pedal in both directions. Lockout assembly must keep pedal from moving in both directions.

19. Slowly sit down in operator's seat and fasten seat belt.

20. Loader may be operated only if pedal lockout prevents pedal movement with all operator weight off the seat.

21. If pedal lockout assembly does not prevent pedal movement with the operator standing and all weight of the operator's seat, STOP ENGINE and see your John Deere dealer for pedal lockout adjustment.

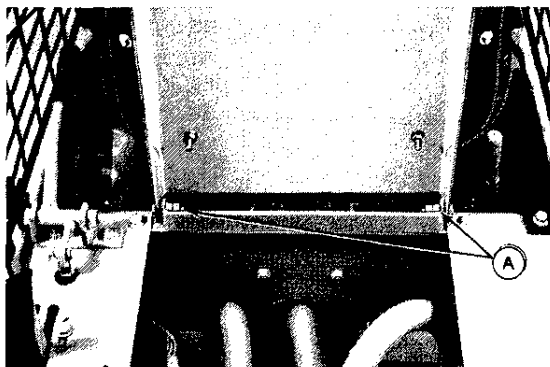


Pedal Shield Removed For Clarity

### TILTING/REMOVING SEAT

**CAUTION:** DO NOT tilt seat forward when engine is running. Seat will move T-bar control handle and cause loader to move.

1. Stop the engine
2. Pull forward on top of seat back.
3. Remove cap screws (A) from seat platform.
4. Lift seat up and off.

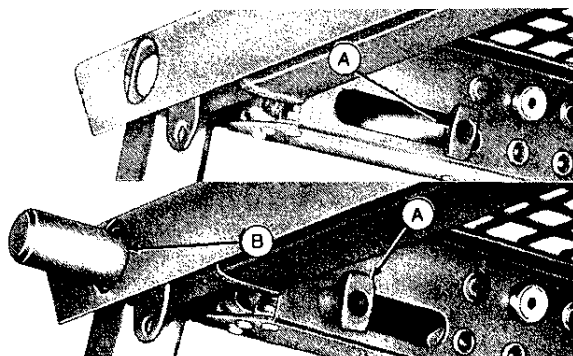


M60016 AA46 040288

### LIFT ARM LOCKS

**CAUTION:** Be sure to use the lift arm lock when servicing the loader with the lift arms raised or bodily injury may occur.

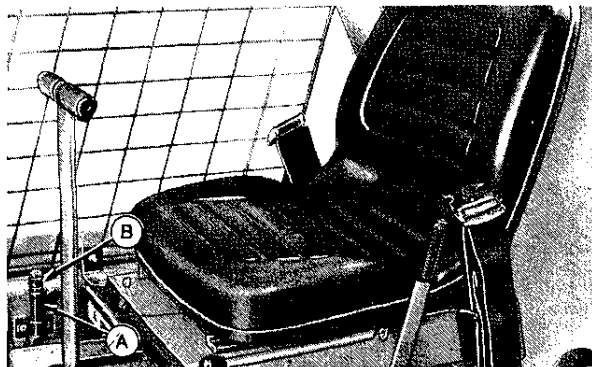
1. Turn knob (A) counterclockwise and slide pin to desired position.
2. Turn knob (A) clockwise until tight to hold pin (B) in selected position.



M60017 AA47 040288

### PARKING BRAKE

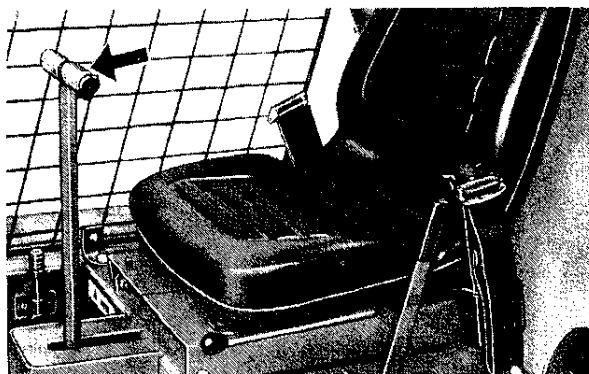
1. Pull brake handle (A) rearward to set brakes.
2. Push brake handle (A) forward to release brakes.
3. Turn adjustment knob (B) counterclockwise to tighten brake cable. Adjust while the loader is on level ground, the transmission in neutral and the engine stopped. For further adjustment see page 43 (lever hand) page 44 (foot) controls.



M60018 AA48 040288

### T-BAR CONTROL HANDLE

**IMPORTANT:** Excessively fast movement of control handle will result in jerky, bucking operation of the loader. If the loader starts bucking, return the control handle to the neutral position. Returning the control handle to neutral will slow down or stop loader movement.



M60022 AA49 040288



**Suggest:**

**If the above button click is invalid.**

**Please download this document**

**first, and then click the above link**

**to download the complete manual.**

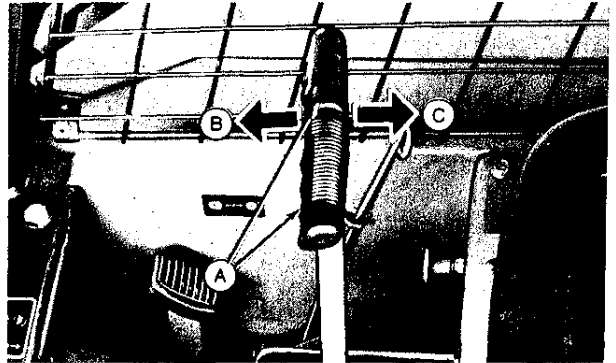
**Thank you so much for reading**

## Operating the Loader

Push control handle (A) forward (B) to move the loader forward.

Pull control handle (A) rearward (C) to move the loader in reverse.

*NOTE: The farther the control lever is moved, the faster the loader will move in that direction.*

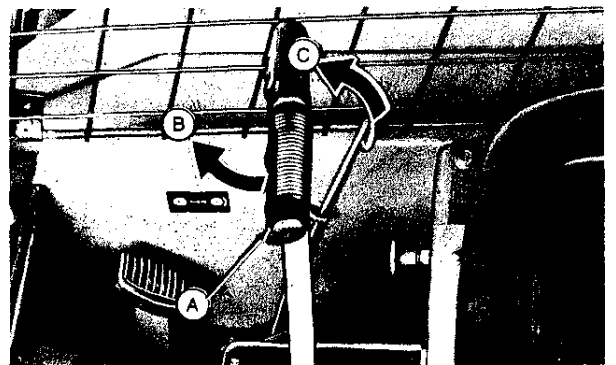


M60020 AA50 040288

Twist control handle (A) to the right (B) and the loader will turn to the right.

Twist control handle (A) to the left (C) and the loader will turn to the left.

*NOTE: The farther the control lever is turned, the faster the loader will turn in that direction.*

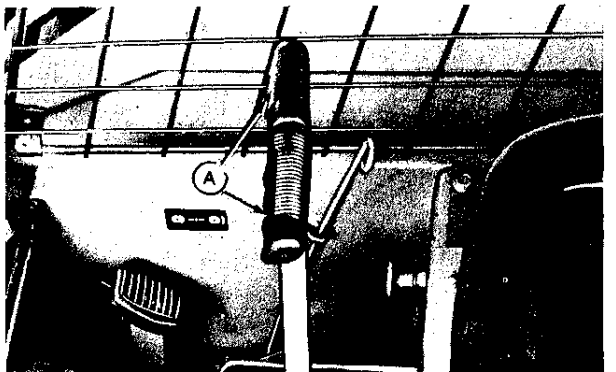


M60023 AA51 040288

Control handle (A) has a built-in limiter that reduces speed in turns, making high speed turns impossible.

The control handle (A) can also be used as a brake. When the loader is moving forward, pull the control handle (A) slightly into the reverse position to stop the loader.

*NOTE: For maximum power at "creeper" speeds, move control lever (A) just past neutral in either direction.*



M60022 AA52 040288

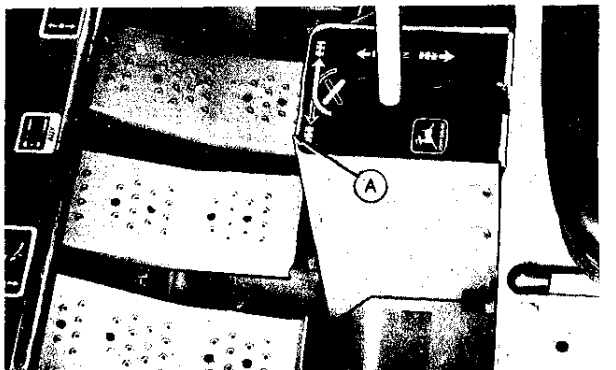
## LIFT ARM AND BUCKET CONTROL PEDALS

### Bucket Tilt Control

The right-hand foot pedal (A) controls the tilt of the bucket or forks.

Push down on the rear of the pedal to tilt the bucket or raise the front of the forks.

Push down on the front of the pedal to dump the bucket or lower the front of the forks.



M60024 AA53 040288

**<https://www.ebooklibonline.com>**

Hello dear friend!

Thank you very much for reading.

Enter the link into your browser.

The full manual is available for immediate download.

**<https://www.ebooklibonline.com>**