

JOHN DEERE
WORLDWIDE COMMERCIAL & CONSUMER
EQUIPMENT DIVISION

Utility All Terrain Vehicle (UATV)
Buck 500 Auto

OMC219000362 F4

OPERATOR'S MANUAL



JOHN DEERE

⚠ WARNING: The Engine Exhaust from this product contains chemicals known to the State of California to cause cancer, birth defects or other reproductive harm.

California Proposition 65 Warning

North American Version
Litho in U.S.A.

INTRODUCTION

Thank You for Purchasing a John Deere Product

We appreciate having you as a customer and wish you many years of safe and satisfied use of your machine.

Using Your Operator's Manual

This manual is an important part of your machine and should remain with the machine when you sell it.

Reading your operator's manual will help you and others avoid personal injury or damage to the machine. Information given in this manual will provide the operator with the safest and most effective use of the machine. Knowing how to operate this machine safely and correctly will allow you to train others who may operate this machine.

If you have an attachment, use the safety and operating information in the attachment operator's manual along with the machine operator's manual to operate the attachment safely and correctly.

This manual and safety signs on your machine may also be available in other languages (see your authorized dealer to order).

Sections in your operator's manual are placed in a specific order to help you understand all the safety messages and learn the controls so you can operate this machine safely. You can also use this manual to answer any specific operating or servicing questions. A convenient index located at the end of this book, will help you to find needed information quickly.

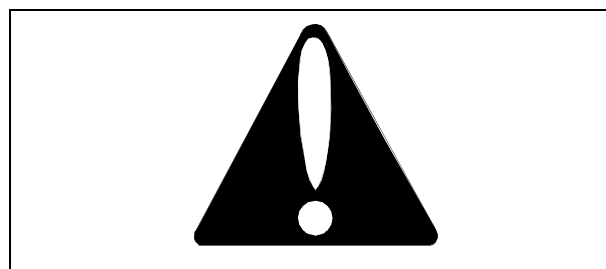
The machine shown in this manual may differ slightly from your machine, but will be similar enough to help you understand our instructions.

RIGHT-HAND and LEFT-HAND sides are determined by facing in the direction the machine will travel when going forward. When you see a broken line arrow (-----), the item referred to is hidden from view.

Before delivering this machine, your dealer performed a predelivery inspection to ensure best performance.

Special Messages

Your manual contains special messages to bring attention to potential safety concerns, machine damage as well as helpful operating and servicing information. Please read all the information carefully to avoid injury and machine damage.



Safety-Alert Symbol

The Safety Alert Symbol indicates a potential injury hazard. The operator's manual also explains any potential safety hazards, which if not avoided could result in serious injury or death. These special safety messages are identified with the word, WARNING, and the safety-alert symbol.



Indicates a potentially hazardous situation which, if not avoided, could result in serious injury or death.

IMPORTANT: Avoid damage! Denotes an instruction which, if not followed, may damage the UATV and/or components.

NOTE: General information is given throughout the manual that may help the operator in the operation or service of the machine.



YOUR ATV CAN BE HAZARDOUS TO OPERATE. A collision or rollover can occur quickly, even during routine maneuvers such as turning and driving on hills or over obstacles, if you fail to take proper precautions.

For your safety, understand and follow all the warnings contained in this Operator's Guide and the labels on your vehicle. Failure to follow these warnings can result in SEVERE INJURY OR DEATH.

Keep this Operator's Guide with the vehicle at all times

Disregarding any of the safety precautions and instructions contained in this Operator's Manual, Safety Videocassette and on-product labels could cause injury including the possibility of death!

Introduction

Your dealer should have provided you with some basic information on the particular controls and features of your

INTRODUCTION

new UATV. Please take the time to study this Operator's Manual and all on-product warning labels as well as the Safety Videocassette that came with the UATV. It more completely describes what you should know about the UATV before riding it.

Whether you are a new user or an experienced rider, it is important for your personal safety that you know the controls and features of the UATV. Equally important is knowing how to properly ride.

Regardless of your age, experience or state regulations, it is safer for you or any other person who may ride your UATV, to take an approved ATV safe riding course. Please check with your dealer or the ATV Safety Institute (ASI) at 1-800-887-2887 for availability in your area. If you have never operated a UATV, this should be done before your first ride. Your UATV instructor should be able to provide advice on local conditions and safe riding practices particular to the area.

Riding conditions vary from place to place. Each is subject to weather conditions which may radically change from time to time and from season to season. Riding on sand is different than riding on snow or through forests or marshes. Each location may require a greater degree of awareness and skill. Always proceed with caution. Please do not take any unnecessary risks that could leave you stranded or possibly injured.

The contents of this Operator's Manual provide riding information which has been proven reliable by other UATV users. They are not intended as a definitive means of avoiding accidents. How you apply this information, coupled with your mental and physical condition, the particular terrain hazard and your risk acceptance level will have an effect on your riding experience. Have fun... and ride responsibly.

This Operator's Manual has been prepared to acquaint the owner/operator of a new vehicle with the various vehicle controls, maintenance and safe operating instructions. It is indispensable for the proper use of the product.

FOREWORD

Congratulations on your purchase of a new John Deere® utility all-terrain vehicle (UATV). It is backed by the John Deere warranty and a network of authorized John Deere UATV dealers ready to provide the parts, service or accessories you may require.

Your dealer is committed to your satisfaction. He has taken training to perform the initial set-up and inspection of your vehicle as well as completed the final adjustment before you took possession. At delivery, your dealer would have explained the operation, maintenance and safety features of the vehicle. We trust you have taken full advantage of

this! If you need more complete servicing information, please ask your dealer.

You are invited to contact our customer assistance center should you experience problems which cannot be resolved by an authorized John Deere UATV dealer. See the John Deere Quality Statement at the end of this manual for information on contacting us.

It is understood that this guide may be translated into another language. In the event of any discrepancy, the English version shall prevail. Throughout this document, the masculine is used to denote the masculine and feminine.

The information and components/ system descriptions contained in this document are correct at the time of publication. John Deere, however, maintains a policy of continuous improvement of its products without imposing upon itself any obligation to install them on products previously manufactured. Due to late changes, some differences between the manufactured product and the descriptions and/or specifications in this Operator's Manual may occur. John Deere reserves the right at any time to discontinue or change specifications, designs, features, models or equipment without incurring any obligation upon itself.

The illustrations in this document show the typical construction of the different assemblies and may not reproduce the full detail or exact shape of the parts. However, they represent parts that have the same or similar function.

The use of RIGHT and LEFT indications in the text always refers to driving position (when sitting on vehicle).

Specifications are given in the SI metric system with the SAE U.S. equivalent in parenthesis. Where precise accuracy is not required, some conversions are rounded off for easier use.

We recommend genuine John Deere products for replacement parts and accessories. They've been especially designed for your vehicle and manufactured to meet John Deere's demanding standards.

A Technical Manual can be obtained for complete service and maintenance information and more repair information.

<https://www.ebooklibonline.com>

Hello dear friend!

Thank you very much for reading.

Enter the link into your browser.

The full manual is available for immediate download.

<https://www.ebooklibonline.com>

PRODUCT IDENTIFICATION

How To Identify Your UATV

The main components of your vehicle (engine and frame) are identified by different serial numbers. It may sometimes become necessary to locate these numbers for warranty purposes or to trace your vehicle in the event of loss. These numbers are required by the authorized John Deere UATV dealer to complete warranty claims properly. No warranty will be allowed by John Deere if the engine identification number (EIN) or vehicle identification number (VIN) is removed or mutilated in any way. We strongly recommend that you take note of all the serial numbers on your vehicle and supply them to your insurance company.

Record Identification Numbers

Utility All Terrain Vehicle:

Buck Auto PIN (020001 -)

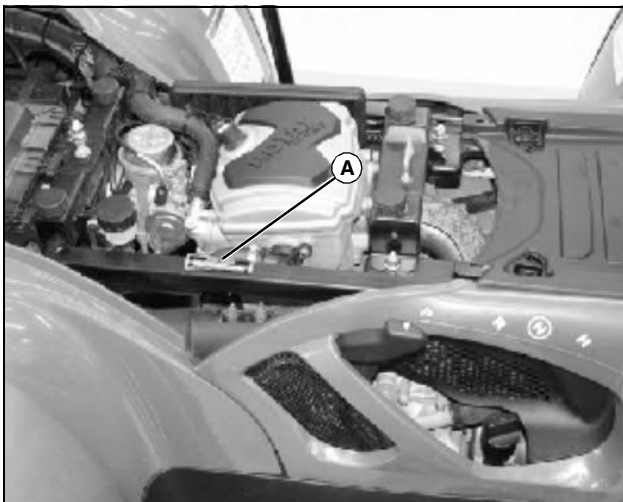
If you need to contact an Authorized Service Center for information on servicing, always provide the product model and identification numbers.

You will need to locate the model and serial number for the machine and for the engine of your machine and record the information in the spaces provided below.

DATE OF PURCHASE:

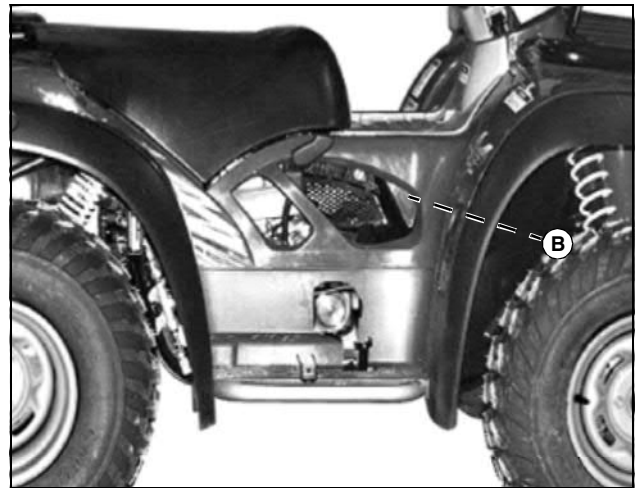
DEALER NAME:

DEALER PHONE:



MX33003

PRODUCT IDENTIFICATION NUMBER (A):



MX30925

ENGINE IDENTIFICATION NUMBER (B):



MX33004

VEHICLE IDENTIFICATION NUMBER (C):

TABLE OF CONTENTS

Safety	1
Operating	27
Service Intervals	49
Service Lubrication	52
Service Engine	55
Service Brakes	62
Service Electrical	63
Service Miscellaneous	67
Troubleshooting	71
Specifications	75
Warranty	79
Index	80

All information, illustrations and specifications in this manual are based on the latest information at the time of publication. The right is reserved to make changes at any time without notice.

COPYRIGHT© 2004
Deere & Co.
John Deere Worldwide Commercial and
Consumer Equipment Division
All rights reserved
Previous Editions
COPYRIGHT©

OMC219000362 F4 - English

SAFETY

While reading this Operator's Manual, remember that:



Indicates a potential hazard that, if not avoided, could result in serious injury or death.

SPECIAL SAFETY MESSAGES

A UATV IS NOT A TOY AND CAN BE HAZARDOUS TO OPERATE.

A UATV handles differently from other vehicles including motorcycles and cars. A collision or rollover can occur quickly, even during routine maneuvers such as turning and driving on hills or over obstacles, if you fail to take proper precautions.

SEVERE INJURY OR DEATH can result if you do not follow these instructions:

- Read this Operator's Manual and all on-product warning labels carefully and follow the operating procedures described. Watch and pay attention to the Safety Videocassette before operation.
- Never operate a UATV without proper instruction. Take a training course. Beginners should receive training from a certified instructor. Contact an authorized John Deere UATV dealer to find out about available training courses nearest you or call the ATV Safety Institute (ASI) at 1 800 887-2887 or in Canada, the Canada Safety Council (CSC) at 1 (613) 739-1535 ext. 227.
- Always follow this age recommendation: A child under 16 years old should never operate this UATV.
- Never carry a passenger on a UATV.
- Never operate a UATV on any paved surfaces, including sidewalks, driveways, parking lots and streets.
- Never operate a UATV on any public street, road or highway, even a dirt or gravel one.
- Never operate a UATV without wearing an approved helmet that fits properly. You should also wear eye protection (goggles or face shield), gloves, boots, long sleeved shirt or jacket, and long pants.
- Never consume alcohol or drugs before or while operating this UATV.
- Never operate at excessive speeds. Always go at a speed that is proper for the terrain, visibility, and operating conditions, and your experience.
- Never attempt wheelies, jumps, or other stunts.
- Always inspect your UATV each time you use it to make sure it is in safe operating condition. Always follow the inspection and maintenance procedures and schedules described further in this Operator's Manual.
- Always keep both hands on the handlebars and both feet on the footrests of the UATV during operation.
- Always go slowly and be extra careful when operating on unfamiliar terrain. Always be alert to changing terrain conditions when operating the UATV.
- Never operate on excessively rough, slippery or loose terrain until you have learned and practiced the skills necessary to control the UATV on such terrain. Always be especially cautious on these kinds of terrain.
- Always follow proper procedures for turning as described further in this Operator's Manual. Practice turning at low speeds before attempting to turn at faster speeds. Do not turn at excessive speed.
- Never operate the UATV on hills too steep for the UATV or for your abilities. Practice on smaller hills before attempting larger hills.
- Always follow proper procedures for climbing hills as described further in this Operator's Manual. Check the terrain carefully before you start up any hill. Never climb hills with excessively slippery or loose surfaces. Shift your weight forward. Never open the throttle suddenly or make sudden gear changes. Never go over the top of any hill at high speed.
- Always follow proper procedures for going down hills and for braking on hills as described further in this Operator's Manual. Check the terrain carefully before you start down any hill. Shift your weight backward. Never go down a hill at high speed. Avoid going down a hill at an angle that would cause the vehicle to lean sharply to one side. Go straight down the hill where possible.
- Always follow proper procedures for crossing the side of a hill as described further in this Operator's Manual. Avoid hills with excessively slippery or loose surfaces. Shift your weight to the uphill side of the UATV. Never attempt to turn the UATV around on any hill until you have mastered the turning technique described further in this Operator's Manual on level ground. Avoid crossing the side of a steep hill if possible.
- Always use proper procedures if you stall or roll backwards when climbing a hill. To avoid stalling, use proper gear and maintain a steady speed when climbing a hill. If you stall or roll backwards, follow the special procedure for braking described further in this Operator's Manual. Dismount on the uphill side or to a side if pointed straight uphill. Turn the UATV around and remount, following the procedure described further in this Operator's Manual.
- Always check for obstacles before operating in a new

SAFETY

area. Never attempt to operate over large obstacles, such as large rocks or fallen trees. Always follow proper procedures when operating over obstacles as described further in this Operator's Manual.

- Always be careful when skidding or sliding. Learn to safely control skidding or sliding by practicing at low speeds and on level, smooth terrain. On extremely slippery surfaces, such as ice, go slowly and be very cautious in order to reduce the chance of skidding out of control.
- Never operate a UATV in fast flowing water or in water deeper than that specified further in this Operator's Manual. Remember that wet brakes may have reduced stopping ability. Test your brakes after leaving water. If necessary, apply them several times for friction to dry out the pads.
- Always be sure there are no obstacles or people behind you when you operate in reverse. When it is safe to proceed in reverse, go slowly.
- Always use the size and type tires specified further in this Operator's Manual. Always maintain proper tire pressure as described further in this manual.
- Never modify a UATV through improper installation or use of accessories.
- Never exceed the stated load limits for a UATV. Cargo should be properly distributed and securely attached. Reduce speed and follow instructions in this Operator's Manual for carrying cargo or pulling a trailer. Allow greater distance for braking.
- FOR MORE INFORMATION ABOUT UATV SAFETY, call the ATV Safety Institute (ASI) at 1 800 887-2887 or in Canada, the Canada Safety Council (CSC) at 1 (613) 739-1535 ext. 227 or contact an authorized John Deere UATV dealer to find out about the training courses nearest you.

Emission Requirement

The California Air Resources Board (CARB) requires that your UATV comply with applicable exhaust emissions standards during its useful life, when operated and maintained according to the instructions supplied.

A non-compliance Red Label (as well as a Green Label) is obtained annually during California Vehicle registration. The appropriate label is denoted by the vehicle identification number (in the 8th character detailed herein)

VEHICLE CATEGORY	VIN 8th CHARACTER
Non-complying Red Label	Must denote a C or 3
Complying Green Label	Any alphanumeric designation other than a C or 3

Do Not Modify Machine

- Never machine, weld, or make any unauthorized modifications to any part of the machine, winch, or any other attachments.
- Never alter or remove the safety decals.
- Modifications can result in making the winch unsafe, increasing the possibility of severe bodily injury or death.

Operation Warnings

While reading this Operator's Manual, remember that:



Indicates a potential hazard that, if not avoided, could result in serious injury or death.

The following warnings and their format have been requested by the United States Consumer Product Safety Commission and are required to be in this Operator's Manual for all John Deere UATVs.

NOTE: The following illustrations are general representations only. Your model may differ.

SAFETY

WARNING



V00a0aq2

POTENTIAL HAZARD

Operating this UATV without proper instruction.

WHAT CAN HAPPEN

The risk of an accident is greatly increased if the operator does not know how to operate the UATV properly in different situations and on different types of terrain

HOW TO AVOID THE HAZARD

Beginning and inexperienced operators should complete the certified training course. They should then regularly practice the skills learned in the course and the operating techniques described further in this Operator's Manual.

For more information about the training course, contact an authorized John Deere UATV dealer or call the ATV Safety Institute (ASI) at 1 800 887-2887 or in Canada, the Canada Safety Council (CSC) at 1 (613) 739-1535 ext. 227.

WARNING



V00a01qa2

POTENTIAL HAZARD

Failure to follow the age recommendations for this UATV.

WHAT CAN HAPPEN

Use by children of UATVs that are not recommended for their age can lead to severe injury or death of the child.

Even though a child may be within the age group for which an UATV is recommended, he or she may not have the skills, abilities, or judgment needed to operate the UATV safely and may be involved in a serious accident.

HOW TO AVOID THE HAZARD

No one under 16 should operate a John Deere UATV.

SAFETY

WARNING



V00a02q2

POTENTIAL HAZARD

Carrying a passenger on this UATV or in the rear cargo box.

WHAT CAN HAPPEN

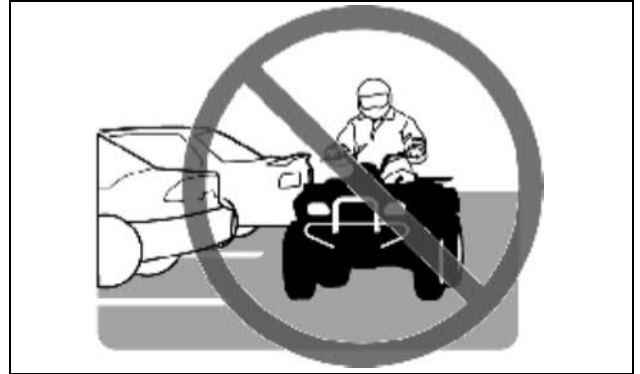
Greatly reduces your ability to balance and control this UATV.

Could cause an accident, resulting in harm to you and/or your passenger.

HOW TO AVOID THE HAZARD

Never carry a passenger. The long seat is to allow the operator to shift position as needed during operation. The rear cargo box is used to transport material only. They are not for carrying passengers.

WARNING



V00a03q2

POTENTIAL HAZARD

Operating this UATV on paved surfaces.

WHAT CAN HAPPEN

The UATV's tires are designed for off-road use only, not for use on pavement. Paved surfaces may seriously affect handling and control of the UATV, and may cause the vehicle to go out of control.

HOW TO AVOID THE HAZARD

Never operate the UATV on any paved surfaces, including sidewalks, driveways, parking lots and streets.

SAFETY

WARNING



V00a04q2

POTENTIAL HAZARD

Operating this UATV on public streets, roads or highways.

WHAT CAN HAPPEN

You can collide with another vehicle.

HOW TO AVOID THE HAZARD

Never operate this UATV on any public street, road or highway, even a dirt or gravel one. In many states it is illegal to operate UATVs on public streets, roads and highways.

WARNING



V00a06q2

POTENTIAL HAZARD

Operating this UATV without wearing an approved helmet, eye protection and protective clothing.

WHAT CAN HAPPEN

Operating without an approved helmet increases your chances of a severe head injury or death in the event of an accident.

Operating without eye protection can result in an accident and increases your chances of a severe injury in the event of an accident.

Operating without protective clothing increases your chances of severe injury in the event of an accident.

HOW TO AVOID THE HAZARD

Always wear an approved helmet that fits properly. You should also wear:

- Eye protection (goggles or face shield)
- Gloves
- Boots
- Long sleeved shirt or jacket
- Long pants

SAFETY

WARNING



V00a07q2

POTENTIAL HAZARD

Operating this UATV after consuming alcohol or drugs.

WHAT CAN HAPPEN

- Could seriously affect your judgment.
- Could cause you to react more slowly.
- Could affect your balance and perception.
- Could result in an accident.

HOW TO AVOID THE HAZARD

Never consume alcohol or drugs before or while driving this UATV.

WARNING



V00a08q2

POTENTIAL HAZARD

Operating this UATV at excessive speeds.

WHAT CAN HAPPEN

Increases your chances of losing control of the UATV, which can result in an accident.

HOW TO AVOID THE HAZARD

Always travel at a speed which is proper for the terrain, visibility and operating conditions, and your experience.

SAFETY

WARNING



V00a09q2

POTENTIAL HAZARD

Attempting wheelies, jumps and other stunts.

WHAT CAN HAPPEN

Increases the chance of an accident, including an overturn.

HOW TO AVOID THE HAZARD

Never attempt stunts, such as wheelies or jumps. Do not try to show off.

WARNING

POTENTIAL HAZARD

Riding on frozen waterways.

WHAT CAN HAPPEN

Severe injury or death can result if the vehicle and/or operator break through the ice.

HOW TO AVOID THE HAZARD

Never ride this vehicle on a frozen surface before you are sure the ice is thick enough and sound enough to support the vehicle and its load, as well as the force that is created by a moving vehicle.

WARNING

POTENTIAL HAZARD

Failure to inspect the UATV before operating.

Failure to properly maintain the UATV.

WHAT CAN HAPPEN

Increases the possibility of an accident or equipment damage.

HOW TO AVOID THE HAZARD

Always inspect your UATV each time you use it to make sure the UATV is in safe operating condition.

Be sure that the rear cargo box is properly latched before operating the vehicle.

Always follow the inspection, maintenance procedures and schedules described further in this Operator's Manual.

WARNING



V00a0bq2

POTENTIAL HAZARD

Removing hands from handlebars or feet from footrests during operation.

WHAT CAN HAPPEN

Removing even one hand or foot can reduce your ability to control the UATV or could cause you to lose your balance and fall off the UATV. If you remove a foot from the footrests, your foot or leg may come into contact with the rear wheels, which could injure you or cause an accident.

HOW TO AVOID THE HAZARD

Always keep both hands on the handlebars and both feet on the footrests of your UATV during operation.

SAFETY

! WARNING



V00acq2

POTENTIAL HAZARD

Failure to use extra care when operating this UATV on unfamiliar terrain.

WHAT CAN HAPPEN

You can come upon hidden rocks, bumps, or holes, without enough time to react.

Could result in the UATV overturning or loss of control.

HOW TO AVOID THE HAZARD

Go slowly and be extra careful when operating on unfamiliar terrain.

Always be alert to changing terrain conditions when operating the UATV.

! WARNING



V00a0dq2

POTENTIAL HAZARD

Failure to use extra care when operating on excessively rough, slippery or loose terrain.

WHAT CAN HAPPEN

Could cause loss of traction or vehicle control, which could result in an accident, including an overturn.

HOW TO AVOID THE HAZARD

Do not operate on excessively rough, slippery or loose terrain until you have learned and practiced the skills necessary to control the UATV on such terrain.

Always be especially cautious on these kinds of terrain.

SAFETY

! WARNING



V000a0eq2

POTENTIAL HAZARD

Turning improperly.

WHAT CAN HAPPEN

UATV could go out of control, causing a collision or overturn.

HOW TO AVOID THE HAZARD

Always follow proper procedures for turning as described further in this Operator's Manual. Practice turning at low speeds before attempting to turn at faster speeds.

Do not turn at excessive speed.

! WARNING



V00a0qq2

POTENTIAL HAZARD

Operating on excessively steep hills.

WHAT CAN HAPPEN

The vehicle can overturn more easily on extremely steep hills than on level surfaces or small hills.

HOW TO AVOID THE HAZARD

Never operate the UATV on hills too steep for the UATV or for your abilities.

Practice on smaller hills before attempting larger hills.

SAFETY

WARNING



V00a0fq2

POTENTIAL HAZARD

Climbing hills improperly.

WHAT CAN HAPPEN

Could cause loss of control or cause UATV to overturn.

HOW TO AVOID THE HAZARD

Always follow proper procedures for climbing hills as described further in this Operator's Manual.

Always check the terrain carefully before you start up any hill.

Never climb hills with excessively slippery or loose surfaces.

Shift your weight forward.

Never open the throttle suddenly or make sudden gear changes. The UATV could flip over backwards.

Never go over the top of any hill at high speed. An obstacle, a sharp drop, or another vehicle or person could be on the other side of the hill.

WARNING



V00a0gg2

POTENTIAL HAZARD

Going down a hill improperly.

WHAT CAN HAPPEN

Could cause loss of control or cause UATV to overturn.

HOW TO AVOID THE HAZARD

Always follow proper procedures for going down hills as described further in this Operator's Manual. NOTE: A special technique is required when braking as you go down a hill.

Always check the terrain carefully before you start down any hill.

Shift your weight backward.

Never go down a hill at high speed.

Avoid going down a hill at an angle which would cause the vehicle to lean sharply to one side. Go straight down the hill where possible.

SAFETY

! WARNING



V00a0hq2

POTENTIAL HAZARD

Improperly crossing hills or turning on hills.

WHAT CAN HAPPEN

Could cause loss of control or cause UATV to overturn.

HOW TO AVOID THE HAZARD

Never attempt to turn the UATV around on any hill until you have mastered the turning technique as described further in this Operator's Manual on level ground. Be very careful when turning on any hill.

Avoid crossing the side of a steep hill if possible.

When crossing the side of a hill:

- Always follow proper procedures as described further in this Operator's Manual.
- Avoid hills with excessively slippery or loose surfaces.
- Shift your weight to the uphill side of the UATV.

! WARNING



V00a0iq2

POTENTIAL HAZARD

Stalling, rolling backwards or improperly dismounting while climbing a hill.

WHAT CAN HAPPEN

Could result in UATV overturning.

HOW TO AVOID THE HAZARD

Use proper gear and maintain steady speed when climbing a hill.

If you lose all forward speed:

- Keep weight uphill.
- Apply the brakes.
- Lock parking brake after you are stopped.

If you begin rolling backwards:

- Keep weight uphill.
- Apply the brakes gradually.
- When fully stopped, lock parking brake.
- Dismount on uphill side, or to a side if pointed straight uphill.
- Turn the UATV around and remount, following the procedure described further in this Operator's Manual.

SAFETY

WARNING



V00a0jq2

POTENTIAL HAZARD

Improperly operating over obstacles.

WHAT CAN HAPPEN

Could cause loss of control or a collision. Could cause the UATV to overturn.

HOW TO AVOID THE HAZARD

Before operating in a new area, check for obstacles.

Never attempt to ride over large obstacles, such as large rocks or fallen trees.

When you go over obstacles, always follow proper procedures as described further in this Operator's Manual.

WARNING



V00a0kq2

POTENTIAL HAZARD

Skidding or sliding improperly.

WHAT CAN HAPPEN

You may lose control of this UATV.

You may also regain traction unexpectedly, which may cause the UATV to overturn.

HOW TO AVOID THE HAZARD

Learn to safely control skidding or sliding by practicing at low speeds and on level, smooth terrain.

On extremely slippery surfaces, such as ice, go slowly and be very cautious in order to reduce the chance of skidding or sliding out of control.



Suggest:

If the above button click is invalid.

Please download this document

first, and then click the above link

to download the complete manual.

Thank you so much for reading

SAFETY

WARNING



V00a01q2

POTENTIAL HAZARD

Operating this UATV through deep or fast flowing water.

WHAT CAN HAPPEN

Tires may float, causing loss of traction and loss of control, which could lead to an accident.

HOW TO AVOID THE HAZARD

Never operate this UATV in fast flowing water or in water deeper than that specified further in this Operator's Manual.

Check water depth and current before you attempt to cross any water. Water should not go above footrests.

Remember that wet brakes may have reduced stopping ability. Test your brakes after leaving water. If necessary, apply them several times to let friction dry out the pads.

WARNING



POTENTIAL HAZARD

Improperly operating in reverse.

WHAT CAN HAPPEN

You could hit an obstacle or person behind you, resulting in serious injury.

HOW TO AVOID THE HAZARD

When you select reverse gear, make sure there are no obstacles or people behind you. When it is safe to proceed, go slowly.

<https://www.ebooklibonline.com>

Hello dear friend!

Thank you very much for reading.

Enter the link into your browser.

The full manual is available for immediate download.

<https://www.ebooklibonline.com>