

**3375  
Skid-Steer  
Loader**

**(Serial No. 140001 – )**

**OPERATOR'S  
MANUAL**

**John Deere  
Lawn & Grounds Care Division  
OMM121047 B5**

**Export Version  
Litho in U.S.A  
English**

## INTRODUCTION

---

---

**READ THIS MANUAL** carefully to learn how to operate and service your machine correctly. Failure to do so could result in personal injury or equipment damage. This manual and safety signs on your machine may also be available in other languages (see your John Deere dealer to order).

**THIS MANUAL SHOULD BE CONSIDERED** a permanent part of your machine and should remain with the machine when you sell it.

**MEASUREMENTS** in this manual are given in both metric and customary U.S. unit equivalents. Use only correct replacement parts and fasteners. Metric and inch fasteners may require a specific metric or inch wrench.

**RIGHT-HAND AND LEFT-HAND** sides are determined by facing the direction of forward travel.

**SETTING FUEL DELIVERY BEYOND PUBLISHED** factory specifications or otherwise overpowering will result in loss of warranty protection for this machine.

**BEFORE DELIVERING THIS MACHINE**, your dealer performed a predelivery inspection to ensure best performance.

**THIS SKID STEER LOADER IS DESIGNED SOLEY** for use in customary agricultural and forestry operations, for park and amenity area maintenance and for winter work ("intended use"). Use in any other way is considered as contrary to the intended use.

The manufacturer accepts no liability for damage or injury resulting from this misuse, and these risks must be borne solely by the user. Compliance with and strict adherence to the conditions of operation, service and repair as specified by the manufacturer also constitute essential elements for the intended use.

---

## INTRODUCTION

---

---

**THIS SKID STEER LOADER SHOULD BE OPERATED,** serviced and repaired by persons familiar with all its particular characteristics and acquainted with the relevant safety rules (accident prevention). The accident prevention regulations, all other generally recognized regulations on safety and occupational medicine and the road traffic regulations must be observed at all times.

Any arbitrary modifications carried out on this machine will relieve the manufacturer of all liability for any resulting damage or injury.

**WRITE PRODUCT IDENTIFICATION NUMBERS (P.I.N.)** in the space provided below. Accurately record all the numbers to help in tracing the machine should it be stolen. Your dealer also needs these numbers when you order parts. File the identification numbers in a secure place off the machine.

<b>Date of Purchase:</b> _____
-----------------------------------

<b>Dealer Name:</b> _____	<b>Phone:</b> _____
------------------------------	------------------------



---

**<https://www.ebooklibonline.com>**

Hello dear friend!

Thank you very much for reading.

Enter the link into your browser.

The full manual is available for immediate download.

**<https://www.ebooklibonline.com>**



## TABLE OF CONTENTS

---

	Page
<b>Safety Signs</b>	
Pictorial Safety Signs.....	1
Avoid Overturn.....	1
Avoid Injury.....	1
Avoid Death.....	2
No Riders–Avoid Death.....	2
Avoid Injury.....	2
Warning.....	3
Stop engine.....	3
Avoid Tipping.....	3
<b>Controls</b>	
Hand Controls.....	5
Foot Controls.....	6
Instrument Panel.....	6
Control Panel.....	7
Indicator Lights.....	7
Lift Arm Stop Control Lever.....	8
<b>Operate Safely</b>	
Operator Training Required.....	9
Use Seat Belt Properly.....	9
Protect Children.....	10
Keep Riders Off Machine.....	10
Park Safely.....	10
Avoid Tipping.....	11
Avoid Death.....	11
Remember The Other Guy.....	11
Avoid Injury.....	12
Avoid Hazards.....	12
Use Handholds And Steps.....	13

---

## TABLE OF CONTENTS

---

	Page
<b>Operate Safely Continued:</b>	
Wear Appropriate Clothing .....	13
Check Wheel Bolts .....	13
Prevent Machine Runaway .....	14
Avoid An Explosion .....	14
Work In Ventilated Area .....	14
Transport Safely .....	15
<b>Operating Engine</b>	
Daily Operating Checklist.....	16
Testing Safety Systems .....	16
Checking Boom Safety Interlock .....	20
Starting Engine.....	21
After Starting .....	24
Warming Engine.....	25
Operating Engine Under Load .....	26
Stopping Engine.....	26
<b>Operating Loader</b>	
Operate Loader Safely .....	28
Engine Will Not Start And Boom Will Not Operate.....	29
Using Park Brake .....	30
Using Traction Drive Lever.....	30
Using Drive Control Levers .....	30
Using Lift Arm And Bucket Control Pedals.....	31
Using Lift Arm Stop Control Lever.....	32
Driving On A Road .....	33
Operating Tips.....	33
Operating Tips Continued: .....	34
Digging With Bucket.....	34
Backfilling Or Leveling With Bucket .....	35

## TABLE OF CONTENTS

---

	Page
<b>Operating Loader Continued:</b>	
Loading Bucket–Arc Penetration .....	36
Loading Bucket–Step Penetration .....	37
Dumping Bucket .....	38
Parking Loader .....	39
After Operation .....	40
<b>Installing Bucket</b>	
Park Vehicle Safely.....	41
Avoid High Pressure Fluids .....	41
Installing Bucket.....	42
<b>Removing Bucket</b>	
Park Vehicle Safely.....	43
Avoid High Pressure Fluids .....	43
Removing Bucket.....	44
<b>Service Machine Safely</b>	
Service Machine Safely .....	45
Wear Appropriate Clothing .....	46
Handling Waste Product and Chemicals .....	46
Avoid High Pressure Fluids .....	47
Service Cooling System.....	47
<b>Service Interval Chart</b>	
Service Intervals .....	48
Hour Meter .....	49

## TABLE OF CONTENTS

---

	Page
<b>Service - Engine and Hydraulics</b>	
Avoid Fumes .....	50
Diesel Engine Oil/Lubricants .....	50
General Purpose Grease .....	51
Hydraulic Oil .....	51
Checking Engine Oil Level .....	51
Checking Hydraulic Oil Level .....	52
Checking Coolant Level .....	53
Emptying Dust Valve .....	54
Cleaning Radiator .....	54
Lubricating Traction Drive Pivot Arm .....	55
Cleaning Hydraulic System Breathers .....	55
Changing Engine Oil And Filter .....	56
Cleaning Hydraulic Oil Screen .....	57
Replacing Hydraulic Filter .....	58
Replacing Fuel Filters .....	59
Replacing Air Cleaner Element .....	60
Changing Hydraulic Oil .....	60
Bleeding Fuel System .....	61
Draining, Flushing, And Filling Cooling System .....	63
Engine Coolant .....	66
<b>Service - Electrical</b>	
Cleaning Or Replacing Battery .....	67
Checking And Cleaning Battery .....	67
Checking Battery Electrolyte Level .....	68
Charging The Battery .....	70
Charging Rates .....	71
Using Booster Battery .....	72
Limited Battery Warranty .....	74
Replacing Fuse .....	75
Replacing Control Module .....	75

---

## TABLE OF CONTENTS

---

	Page
<b>Service - Miscellaneous</b>	
Metric Bolt And Cap Screw Torque Values .....	76
Metric Bolt And Cap Screw Torque Values Continued: .....	77
Checking Tire Pressure .....	79
John Deere Tire Warranty .....	80
Refueling Machine .....	80
Before Filling Fuel Tank.....	81
Filling Fuel Tank .....	81
Fuel Specifications.....	82
Fuel Storage .....	83
Do Not Use Galvanized Containers.....	83
Opening Service Door .....	84
Removing Seat .....	84
Checking And Adjusting Alternator Belt Tension .....	85
Checking Drive Chain Tension .....	85
Adjusting Chain Tension.....	86
Tightening Idler Bracket Bolts.....	87
Tightening Wheel Bolts.....	87
Lubricating Lift Arm Pivot Pins.....	88
Adjusting Lift Arm Stop Linkage.....	89
Adjusting Pedals .....	89
Adjusting Traction Drive Belt .....	90
Adjusting Drive Controls .....	90
Adjusting Steering Controls (Vertical Position) .....	91
Adjusting Stop Bolts.....	92
<b>Troubleshooting</b>	
Using Troubleshooting Chart .....	93
Engine .....	94
Electrical .....	98
Hydraulics .....	100
Hydraulics Continued:.....	102
Brakes.....	102
Hydrostatic System.....	103
Hydrostatic System Continued: .....	104

---

# TABLE OF CONTENTS

---

---

	Page
<b>Storing Loader</b>	
Storing Safety.....	106
Using Engine Storage Kit.....	106
Storing The Loader .....	107
Removing Loader From Storage.....	108
<b>Assembly</b>	
Installing Wheels–Loader On Pallet.....	109
Checking Tire Pressure.....	110
<b>Specifications</b>	
Engine .....	111
Electrical System.....	111
Capacities .....	112
Drive Train.....	112
Travel Speeds.....	112
Steering And Brakes .....	112
Dimensions .....	113
Tire Air Pressure .....	113
Performance Ratings .....	113

All information, illustrations and specifications in this manual are based on the latest information at the time of publication. The right is reserved to make changes at any time without notice.

COPYRIGHT© 1995  
John Deere Horicon Works  
All rights reserved  
Previous Editions  
COPYRIGHT© 1993

# SAFETY SIGNS

---

## Pictorial Safety Signs

At several important places on this machine safety signs are affixed intended to signify potential danger. The hazard is identified by a pictorial in a warning triangle. An adjacent pictorial provides information how to avoid personal injury. These safety signs, their placement on the machine and a brief explanatory text are shown in this Safety Signs section.



## Avoid Overturn

- Carry load low.
- Avoid steep slopes and high speed turns.
- Never carry more than 675 lbs (305 kg).



## Avoid Injury

- Read operators manual.
- Know location and function of controls.
- Keep safety devices working.
- Keep screen and windows in place.
- Keep children and others away.
- Never carry riders.
- Lower lift arms. Engage park brake. Stop engine and remove key before leaving.
- Keep cab clean, especially pedal area.



## SAFETY SIGNS

---

### Avoid Death

Before removing seat abelt and leaving seat:

- Lower lift arms to ground or rest lift arms on stops.
- Stop enigne.
- Lock park brake and remove key.



### No Riders–Avoid Death

- Lift arm stops must be engaged.
- Opening lines for service or part failure can cause lift arms to drop.



### Avoid Injury

Switches in seat and seat belt prevent operation of lift arms and starter unless operator is in seat with seat belt buckled.

- Do not bypass switches.
- Do not lean on or place objects on seat.
- Always buckle seatbelt around opertor.
- Use service switch only when loader wheels are off ground and/or parking brake is set.



See operators manual and contcat dealer if problem arises.



**Suggest:**

**If the above button click is invalid.**

**Please download this document**

**first, and then click the above link**

**to download the complete manual.**

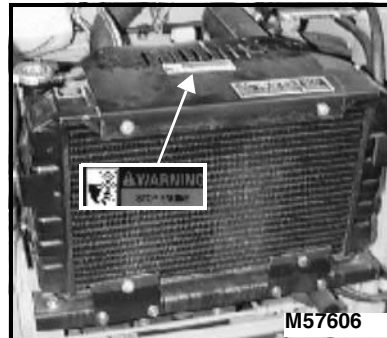
**Thank you so much for reading**

## SAFETY SIGNS

---

### Warning

- Stop engine.
- Do not put hands into rotating fan blades.



### Avoid Tipping

- Loader can move suddenly and violently.
- Always wear seat belt.
- Carry load low.
- Avoid steep slopes and high speed turns.
- Never carry more than 675 lb (305 kg).



**<https://www.ebooklibonline.com>**

Hello dear friend!

Thank you very much for reading.

Enter the link into your browser.

The full manual is available for immediate download.

**<https://www.ebooklibonline.com>**