

JOHN DEERE
WORLDWIDE COMMERCIAL & CONSUMER
EQUIPMENT DIVISION

Compact Utility Tractor
790

OMLVU14371 G3

OPERATOR'S MANUAL



JOHN DEERE

⚠ WARNING: Diesel engine exhaust and some of its constituents are known to the State of California to cause cancer, birth defects, and other reproductive harm.

California Proposition 65 Warning

North American Version
Litho in U.S.A.

INTRODUCTION

Thank You for Purchasing a John Deere Product

We appreciate having you as a customer and wish you many years of safe and satisfied use of your machine.

Using Your Operator's Manual

This manual is an important part of your machine and should remain with the machine when you sell it.

Reading your operator's manual will help you and others avoid personal injury or damage to the machine.

Information given in this manual will provide the operator with the safest and most effective use of the machine.

Knowing how to operate this machine safely and correctly will allow you to train others who may operate this machine.

If you have an attachment, use the safety and operating information in the attachment operator's manual along with the machine operator's manual to operate the attachment safely and correctly.

This manual and safety signs on your machine may also be available in other languages (see your John Deere dealer to order).

Sections in your operator's manual are placed in a specific order to help you understand all the safety messages and learn the controls so you can operate this machine safely. You can also use this manual to answer any specific operating or servicing questions. A convenient index located at the end of this book will help you to find needed information quickly.

The machine shown in this manual may differ slightly from your machine, but will be similar enough to help you understand our instructions.

RIGHT-HAND and LEFT-HAND sides are determined by facing in the direction the machine will travel when going forward. When you see a broken line arrow (-----), the item referred to is hidden from view.

Before delivering this machine, your dealer performed a predelivery inspection to ensure best performance.

Special Messages

Your manual contains special messages to bring attention to potential safety concerns, machine damage as well as helpful operating and servicing information. Please read all the information carefully to avoid injury and machine damage.



CAUTION: Avoid injury! This symbol and text highlight potential hazards or death to the operator or bystanders that may occur if the hazards or procedures are ignored.

IMPORTANT: Avoid damage! This text is used to tell the operator of actions or conditions that might result in damage to the machine.

NOTE: General information is given throughout the manual that may help the operator in the operation or service of the machine.

PRODUCT IDENTIFICATION

Record Identification Numbers

Compact Utility Tractor

790 PIN (592446 -)

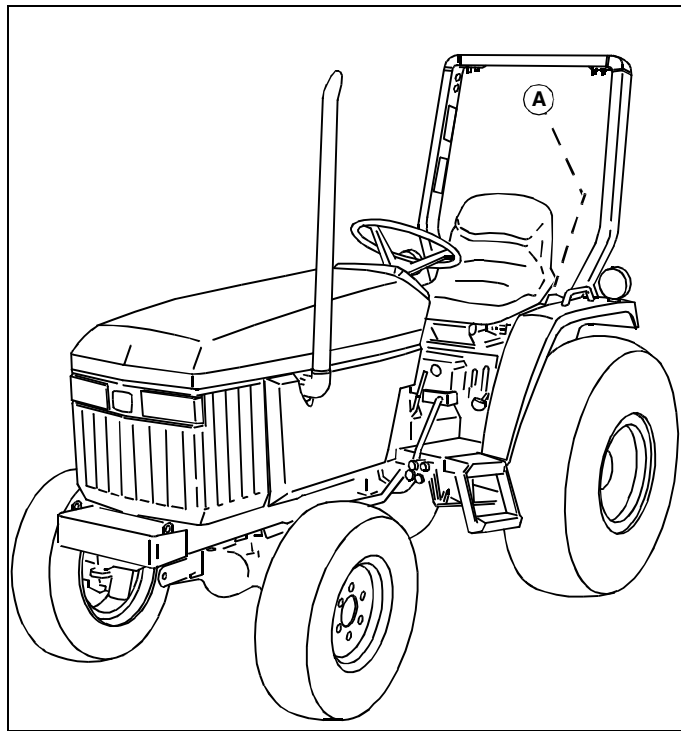
If you need to contact an Authorized Service Center for information on servicing, always provide the product model and serial number.

You will need to locate the model and serial number for the machine and for the engine of your machine and record the information in the spaces provided below.

DATE OF PURCHASE:

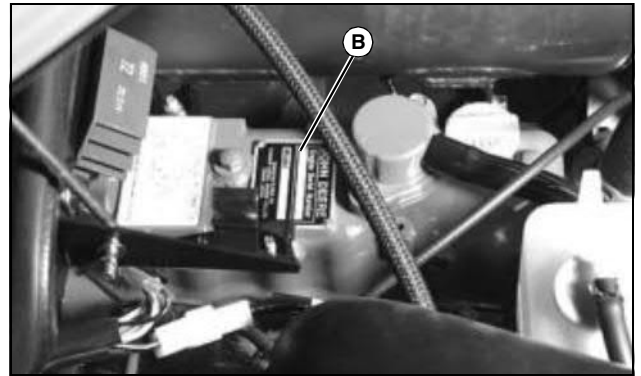
DEALER NAME:

DEALER PHONE:



MIF

PRODUCT IDENTIFICATION NUMBER (A):



MX17434

ENGINE SERIAL NUMBER (B):

<https://www.ebooklibonline.com>

Hello dear friend!

Thank you very much for reading.

Enter the link into your browser.

The full manual is available for immediate download.

<https://www.ebooklibonline.com>

TABLE OF CONTENTS

Safety	1
Operating.....	10
Replacement Parts	36
Service Intervals.....	37
Service Lubrication.....	39
Service Engine - Diesel	41
Service Transmission.....	53
Service Electrical.....	57
Service Miscellaneous.....	63
Troubleshooting	68
Storage	73
Assembly	76
Specifications	78
Warranty	82
Index.....	85

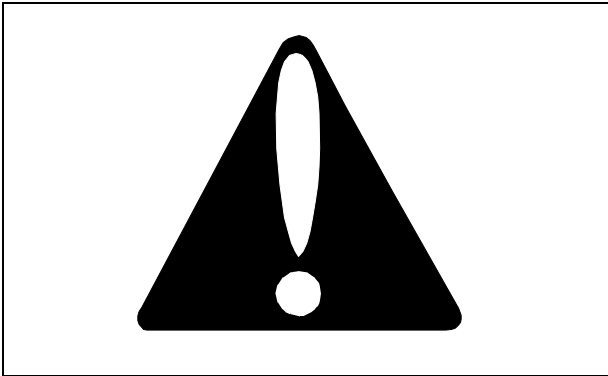
All information, illustrations and specifications in this manual are based on the latest information at the time of publication. The right is reserved to make changes at any time without notice.

COPYRIGHT© 2002
Deere & Co.
John Deere Worldwide Commercial and
Consumer Equipment Division
All rights reserved
Previous Editions
COPYRIGHT© 1999, 2002

OMLVU14371 G3 - English

SAFETY

Understanding The Machine Safety Labels



SAFETY ALERT SYMBOL

The machine safety labels shown in this section are placed in important areas on your machine to draw attention to potential safety hazards.

On your machine safety labels, the words DANGER, WARNING, and CAUTION are used with this safety-alert symbol. DANGER identifies the most serious hazards.

The operator's manual also explains any potential safety hazards whenever necessary in special safety messages that are identified with the word, CAUTION, and the safety-alert symbol.

CAUTION: HELP AVOID INJURY



M97698, M97745

- Avoid turns, rough terrain and slopes that may cause tip over.
- Roll-over protective structure (ROPS) should be installed unless prohibited by low clearance operation.

- Use seat belt unless machine is operated without ROPS.
- Use recommended ballast.
- Stay clear of power driven parts.
- Keep children and others away.
- Look behind before backing.
- Never carry riders.
- Know all controls.
- Latch brakes together for transport and parking.
- Before leaving seat:
 - Lower attachment/implement.
 - Lock park brake.
 - Stop engine and remove key.
- Read operator's manual for training.

WARNING: AVOID CRUSHING



M97742, M97641

Do not jump if machine tips.
USE SEAT BELT

SAFETY

DANGER/POISON



M97744, M88249

SHIELD EYES: EXPLOSIVE GASES CAN CAUSE BLINDNESS OR INJURY.

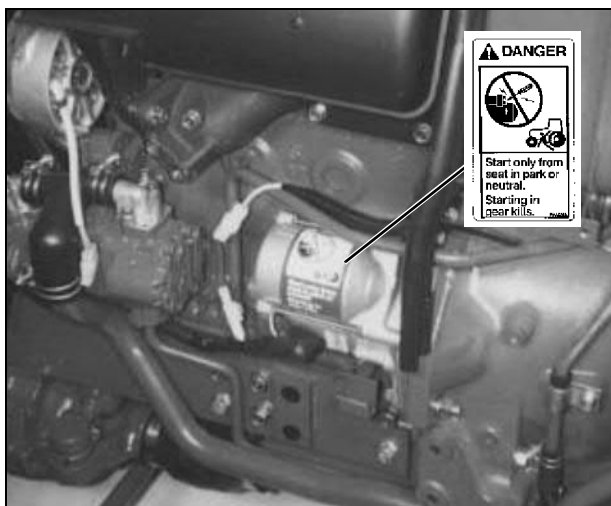
NO SPARKS, FLAMES, SMOKING.

SULFURIC ACID CAN CAUSE BLINDNESS OR SEVERE BURNS.

FLUSH EYES IMMEDIATELY WITH WATER. GET MEDICAL HELP FAST.

KEEP OUT OF REACH OF CHILDREN. DO NOT TIP. KEEP VENT CAPS TIGHT AND LEVEL.

DANGER

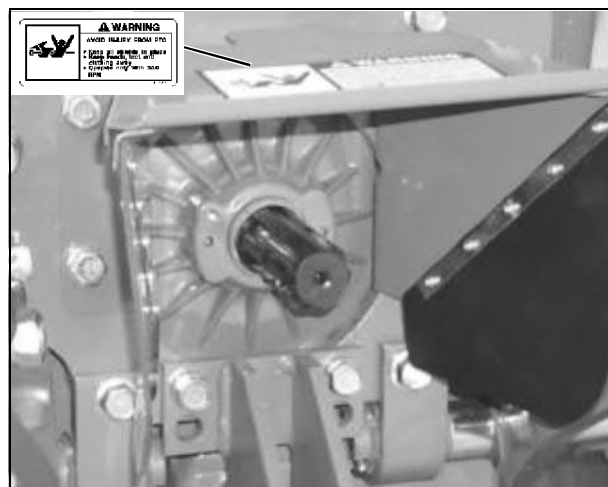


M97743, T146102

Start only from seat in park or neutral.

Starting in gear kills.

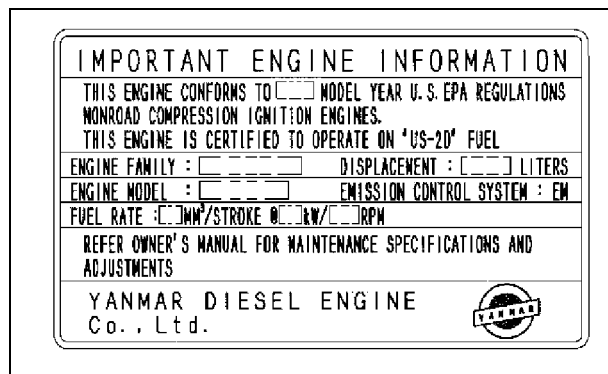
WARNING: AVOID INJURY FROM PTO



M97691, M117557

- Keep all shields in place.
- Keep hands, feet and clothing away
- Operate with only 540 rpm.

Emissions Control System Certification Label (Non-Road Diesel)



MX5293



CAUTION: Avoid injury! Statutes providing severe penalties for tampering with emissions controls may apply at the user's location.

The emissions warranty described in the warranty section applies only to those engines marketed by John Deere that have been certified by the United States Environmental Protection Agency (EPA) and/or California Air Resources Board (CARB); and used in the United States in non-road mobile (self-propelled or portable/transportable¹) equipment. The presence of an emissions label like the one

¹ Equipment moved at least once every 12 months.

SAFETY

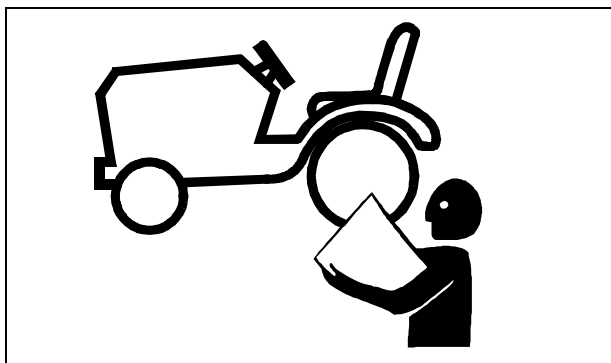
shown signifies that the engine has been certified with the EPA and/or CARB. The EPA and CARB warranties only apply to new engines having the certification label affixed to the engine and sold as stated above in the geographic areas governed by the regulating agencies.

NOTE: The hp/kW rating on the engine emissions certification label specifies the gross engine hp/kW, which is flywheel power without fan. In most applications this will not be the same rating as the advertised machine hp/kW rating.

Operator Training Required

- The owner of the machine is responsible for training the users of the machine.
- The owner/user can prevent accidents with proper use of the machine. The owner/user is responsible for accidents or injuries occurring to themselves, other people or property.
- Do not allow operation of the machine by untrained persons.
- Read the operator manual and study the safety and operation sections before operating the machine.
- If the operator of the machine cannot read or understand this manual, the machine owner is responsible to explain this material to the operator. This publication is available in other languages.
- Operate the machine in an open, unobstructed area under the direction of an experienced operator.
- Learn the use of all controls.
- Operator practice is required to learn the moving, stopping, turning and other operating characteristics of the machine.

Operating Safely



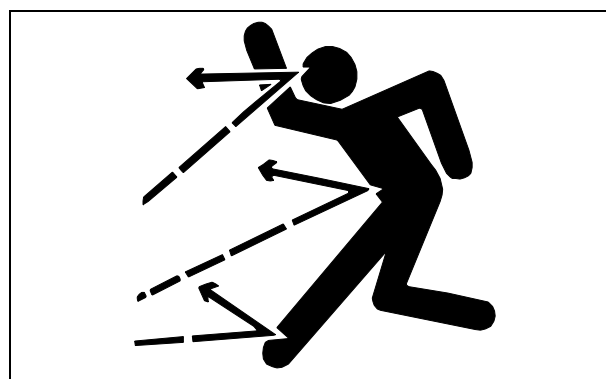
MIF

- Inspect machine before you operate. Be sure hardware

is tight. Repair or replace damaged, badly worn, or missing parts. Be sure guards and shields are in good condition and fastened in place. Make any necessary adjustments before you operate.

- Do not operate mower without discharge chute or entire grass catcher in place.
- Check before each use that operator presence controls are functioning correctly. Test safety systems. Do not operate unless they are functioning correctly.
- Do not change the engine governor setting or overspeed the engine.
- Always wear seat belt if machine has a standard ROPS or a folding ROPS in the upright position.
- Check brake action before you operate. Adjust or service brakes as necessary.
- Stop machine if anyone enters the area.
- Never raise mower decks when blades are running.
- If you hit an object, stop and inspect the machine. Make repairs before you operate. Keep machine and implements properly maintained and in good working order.
- Do not leave machine unattended when it is running.
- Only operate during daylight or with good artificial light.
- Slow down and be careful of traffic when operating near or crossing roadways. Stop blades before crossing roads or sidewalks. Use care when approaching blind corners, shrubs, trees, or other objects that may obscure vision.
- Be aware of the mower discharge direction and make sure that no one is in the path of the discharge direction.
- Use only accessories and implements approved by the manufacturer of the machine.

Checking Mowing Area



MIF

- Evaluate the terrain to determine what accessories and implements are needed to properly and safely perform the job.

SAFETY

- Clear mowing area of objects that might be thrown. Keep people and pets out of mowing area.
- Study mowing area. Set up a safe mowing pattern. Do not mow where traction or stability is doubtful.
- Test drive area with mower lowered but not running. Slow down when you travel over rough ground.

Using a Spark Arrestor

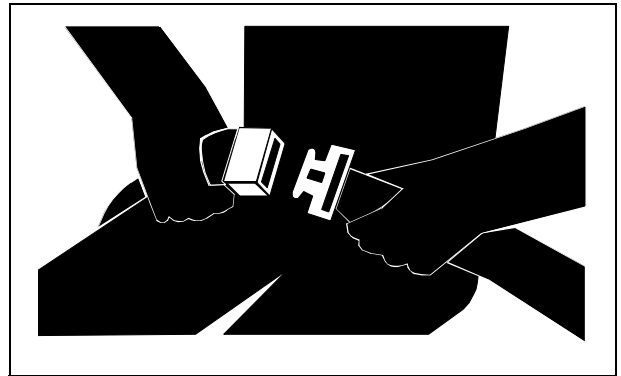
The engine in this machine is not equipped with a spark arrestor muffler. It is a violation of California Public Resource Code Section 4442 to use or operate this engine on or near any forest-covered, brush-covered or grass-covered land unless the exhaust system is equipped with a spark arrestor meeting any applicable local or state laws. Other states or federal areas may have similar laws.

A spark arrestor for your machine may be available from your authorized dealer. An installed spark arrestor must be maintained in good working order by the operator.

Parking Safely

1. Stop machine on a level surface, not on a slope.
2. Disengage PTO.
3. Lower implements to the ground.
4. Lock park brake.
5. Stop engine.
6. Wait for engine and all moving parts to stop before you leave the operator's station.
7. Remove key.

Use Seat Belt Properly



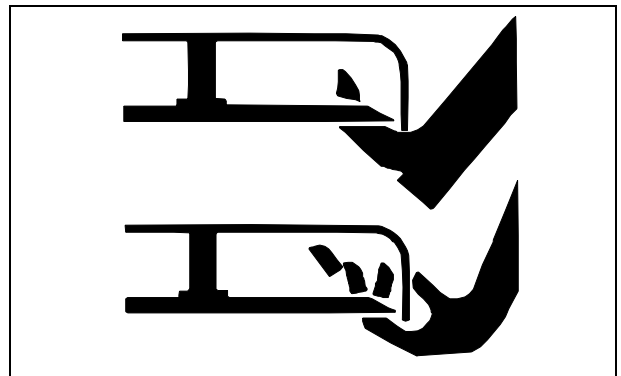
MIF

Use a seat belt when you operate with a Roll-Over Protective Structure (ROPS) to minimize chance of injury from an accident, such as an overturn.

Do not use a seat belt if operating with an optional tall folding ROPS in the folded position.

Rotating Blades are Dangerous

HELP PREVENT SERIOUS OR FATAL ACCIDENTS:

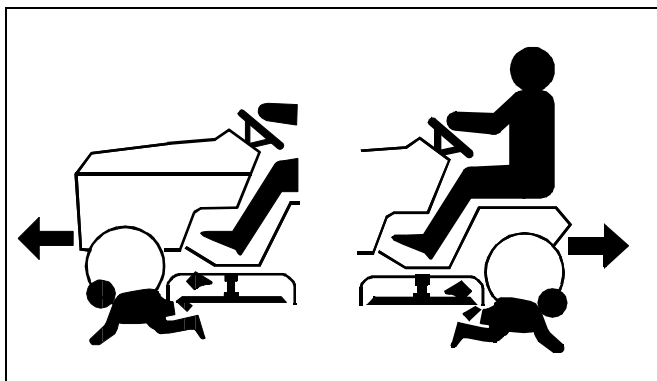


MIF

- Rotating blades can cut off arms and legs.
- Keep hands, feet and clothing away from mower deck when engine is running.
- Be alert at all times, drive forward carefully. People, especially children can move quickly into the mowing area before you know it.
- Before backing up, shut off PTO and look down and behind the machine carefully, especially for children.
- Do not mow in reverse.
- Shut off blades when you are not mowing.
- Park machine safely before inspecting or unplugging mower or bagger.

SAFETY

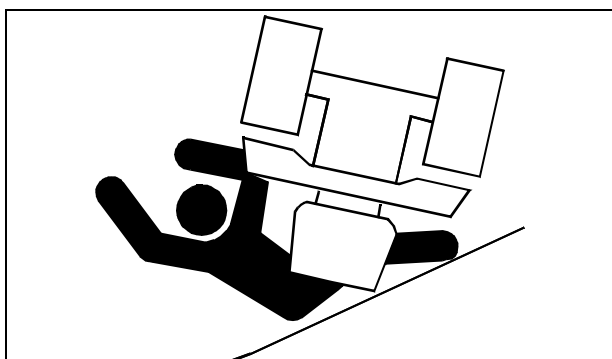
PROTECT CHILDREN:



MIF

- Never assume that children will remain where you last saw them. Children are attracted to mowing activity, stay alert to the presence of children.
- Keep children indoors when you are mowing. Turn the machine off if a child enters the mowing area.
- Use extra care when you come to blind corners, shrubs, trees, or other objects that may block your vision.
- Do not let children or an untrained person operate the machine.
- Do not carry or let children ride on any implement or machine even with the blades off. Do not tow children in a cart or trailer.

Avoid Tipping



MIF

- Slopes are a major factor related to loss-of-control and tip-over accidents, which can result in severe injury or death.
- Do not drive where machine could slip or tip.
- Stay alert for holes and other hidden hazards in the terrain.
- Keep away from drop-offs, ditches, and embankments.
- Slow down before you make a sharp turn or operate on

a slope. On gear models, choose a low gear so that shifting and stopping will not be necessary while on the slope.

- Limit loads to those you can safely control. Use only approved hitches when pulling loads or using heavy equipment. Use counterweights or wheel weights as required in this manual or your implement manual.
- Drive up and down a hill - not across. If necessary, turn slowly and in the downhill direction. Do not shift to neutral and coast downhill.
- Do not stop when going up hill or down hill. If machine stops going up hill, disengage mower blades and back down slowly.
- Operating machine when grass is wet can cause reduced traction and sliding.

Keep Riders Off



MIF

- Only allow the operator on the machine. Keep riders off.
- Riders on the machine or attachment may be struck by foreign objects or thrown off the machine causing serious injury.
- Riders obstruct the operator's view resulting in the machine being operated in an unsafe manner.

SAFETY

Stay Clear of Rotating Drivelines



MIF

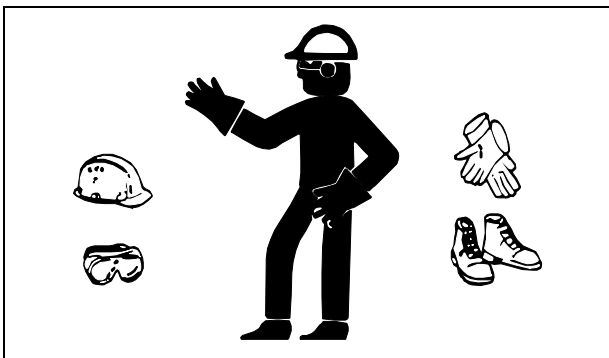
Entanglement in rotating driveline can cause serious injury or death.

- Wear close fitting clothing.
- Stop the engine and be sure PTO driveline is stopped before getting near it.

Checking Wheel Bolts

- A serious accident could occur causing serious injury if wheel bolts are not tight.
- Check wheel bolt tightness often during the first 100 hours of operation.
- Wheel hardware must be tightened to specified torque using the proper procedure anytime it is loosened.

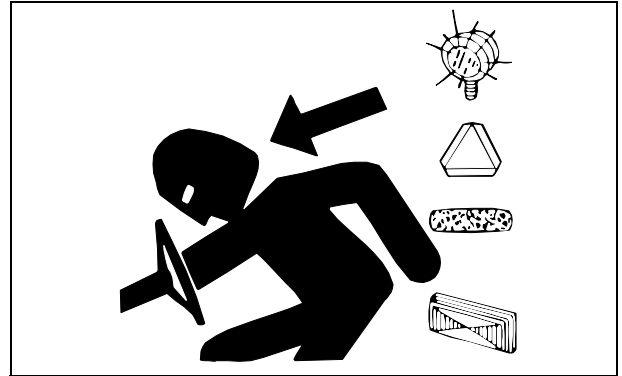
Wear Appropriate Clothing



MIF

- Wear close fitting clothing and safety equipment appropriate for the job.
- Always wear safety goggles, or safety glasses with side shields, and a hard hat when operating the mower.
- Wear a suitable protective device such as earplugs. Loud noise can cause impairment or loss of hearing.

Driving Safely on Public Roads



MIF

- Use safety lights and devices. Slow moving machines when driven on public roads are hard to see, especially at night.
- Use extra care when loading or unloading the machine into a trailer or truck.
- Whenever driving on public roads, use flashing warning lights and turn signals according to state and local regulations.

Practice Safe Maintenance



MIF

- Only qualified, trained adults should service this machine.
- Understand service procedure before doing work. Keep area clean and dry.
- Never lubricate, service, or adjust machine while it is moving. Keep safety devices in place and in working condition. Keep hardware tight.
- Keep hands, feet, clothing, jewelry, and long hair away from any moving parts, to prevent them from getting caught.
- Stop machine on a level surface and lower implements to the ground before servicing machine. Disengage all power and stop the engine. Lock park brake and remove

SAFETY

the key. Let machine cool.

- Disconnect battery or remove spark plug wire (for gasoline engines) before making any repairs.
- Before servicing machine, carefully release pressure from components with stored energy such as hydraulic components.
- Keep all nuts and bolts tightened, especially blade implement bolts.
- Securely support any machine elements that must be raised for service work. Lock service latches before working on machine with raised implements.
- Use jack stands to support components when needed.
- Never run engine unless park brake is locked.
- Keep all parts in good condition and properly installed. Fix damage immediately. Replace worn or broken parts.
- Replace all worn or damaged safety and instruction decals. Newly-installed parts must include current safety labels specified by the manufacturer.
- To prevent fires, remove any buildup of grease, oil, or debris from the machine, especially the engine compartment.
- Charge batteries in an open, well-ventilated area, away from sparks. Unplug battery charger before connecting or disconnecting from the battery. Wear protective clothing and use insulated tools.
- Do not modify machine or safety devices. Unauthorized modifications may impair its function and safety.
- Do not wear radio or music headphones while servicing the machine. Safe service requires your full attention.

Avoid High Pressure Fluids



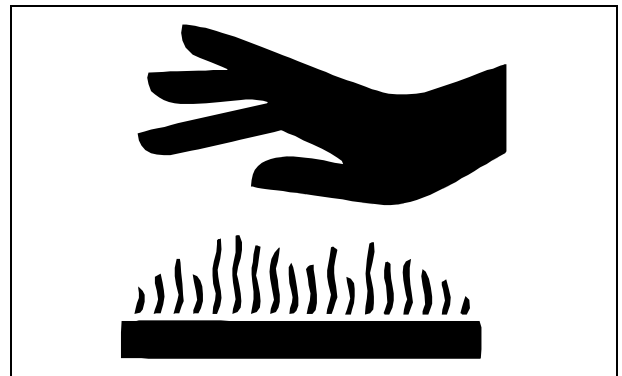
MIF

- Hydraulic hoses and lines can fail due to physical damage, kinks, age, and exposure. Check hoses and lines regularly. Replace damaged hoses and lines.
- Hydraulic fluid connections can loosen due to physical damage and vibration. Check connections regularly.

Tighten loose connections.

- Escaping fluid under pressure can penetrate the skin causing serious injury. Avoid the hazard by relieving pressure before disconnecting hydraulic or other lines. Tighten all connections before applying pressure.
- Search for leaks with a piece of cardboard. Protect hands and body from high pressure fluids.
- If an accident occurs, see a doctor immediately. Any fluid injected into the skin must be surgically removed within a few hours or gangrene may result. Doctors unfamiliar with this type of injury should reference a knowledgeable medical source. Such information is available from Deere & Company Medical Department in Moline, Illinois, U.S.A. Information may be obtained in the United States and Canada only by calling 1-800-822-8262.

Prevent Fires



MIF

- Never remove fuel cap, or add fuel with engine running or hot. Allow engine to cool for several minutes.
- Never store equipment with fuel in the tank inside a building where fumes may reach an open flame or spark.
- Allow engine to cool before storing in any enclosure.
- To reduce fire hazard, keep engine free of grass, leaves, or excessive grease.

Tire Safety

Explosive separation of a tire and rim parts can cause serious injury or death:

SAFETY

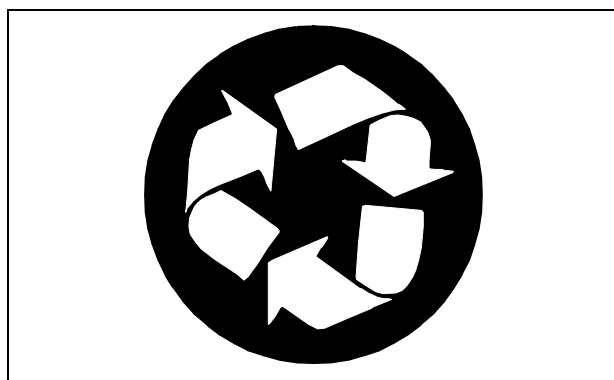


MIF

- Do not attempt to mount a tire without the proper equipment and experience to perform the job.
- Always maintain the correct tire pressure. Do not inflate the tires above the recommended pressure. Never weld or heat a wheel and tire assembly. The heat can cause an increase in air pressure resulting in a tire explosion. Welding can structurally weaken or deform the wheel.
- When inflating tires, use a clip-on chuck and extension hose long enough to allow you to stand to one side and NOT in front of or over the tire assembly.
- Check tires for low pressure, cuts, bubbles, damaged rims or missing lug bolts and nuts.

Handling Waste Product and Chemicals

Waste products, such as, used oil, fuel, coolant, brake fluid, and batteries, can harm the environment and people:



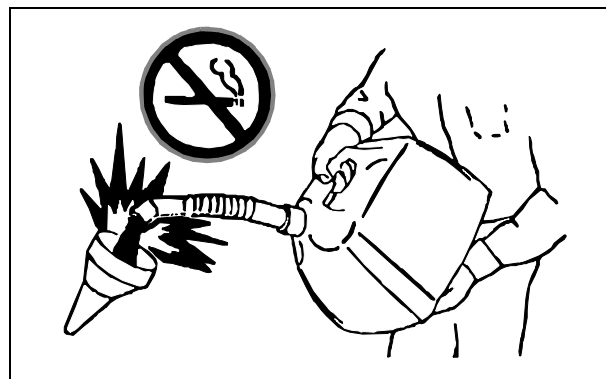
MIF

- DO NOT use beverage containers for waste fluids - someone may drink from them.
- See your local Recycling Center or John Deere dealer to learn how to recycle or get rid of waste products.
- A Material Safety Data Sheet (MSDS) provides specific details on chemical products: physical and health hazards, safety procedures, and emergency response techniques.

The seller of the chemical products used with your machine is responsible for providing the MSDS for that product.

Handling Fuel Safely

Fuel and fuel vapors are highly flammable and explosive:



MIF

- Do not refuel machine while you smoke, when machine is near an open flame or sparks, or when engine is running. Stop engine and allow to cool before filling.
- Never remove the fuel cap or add fuel with the engine running.
- Never fill fuel tank or drain fuel from a machine in an enclosed area. Fill fuel tank outdoors.
- Prevent fires. Clean up spilled fuel immediately.
- Do not store machine with fuel in tank in a building where fumes may reach an open flame or spark.
- Prevent fire and explosion caused by static electric discharge. Use only non-metal, portable fuel containers approved by the Underwriter's Laboratory (U.L.) or the American Society for Testing & Materials (ASTM). If using a funnel, make sure it is plastic and has no screen or filter.

SAFETY



MIF

- Static electric discharge can ignite gasoline vapors in an ungrounded fuel container. Remove the fuel container from the bed of a machine or the trunk of a car and place on the ground away from the machine before filling. Keep nozzle in contact with container opening while filling.
- When practical, remove equipment from trailers or truck beds and refuel them on the ground. If this is not possible, use a portable, plastic fuel container to refuel equipment on a truck bed or trailer.
- For gasoline engines, do not use gas with methanol. Methanol is harmful to your health and to the environment.

OPERATING

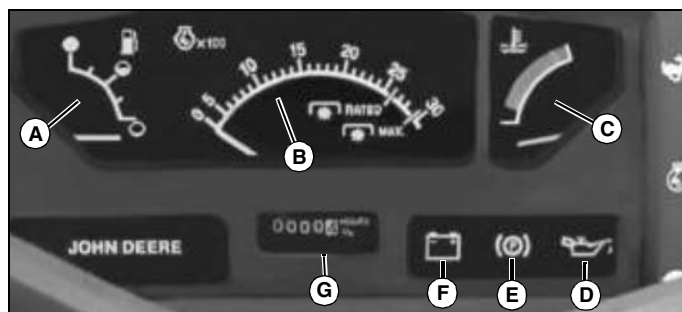
Daily Operating Checklist

- Test safety systems.
- Check tire pressure.
- Check fuel level.
- Check engine oil level.
- Check transmission oil level.
- Check coolant level on liquid cooled engine.
- Remove grass and debris from machine.
- Clean air intake screen.
- Check area below machine for leaks.

Avoid Damage to Plastic and Painted Surfaces

- Do not wipe plastic parts unless rinsed first.
- Insect repellent spray may damage plastic and painted surfaces. Do not spray insect repellent near machine.
- Be careful not to spill fuel on machine. Fuel may damage surface. Wipe up spilled fuel immediately.

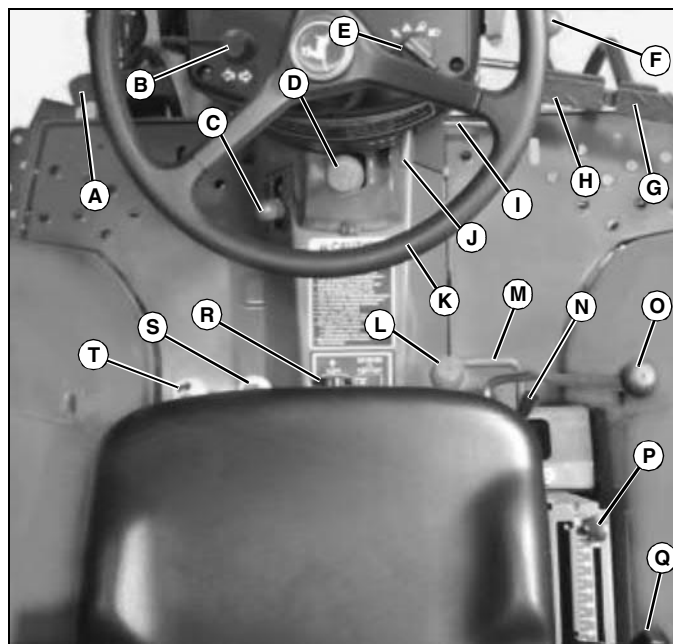
Instrument Panel



M97702

- A - Fuel Gauge
- B - Tachometer
- C - Coolant Temperature Gauge
- D - Oil Pressure Light
- E - Park Brake Light
- F - Alternator/Battery Charging Light
- G - Hourmeter

Operator Station Controls

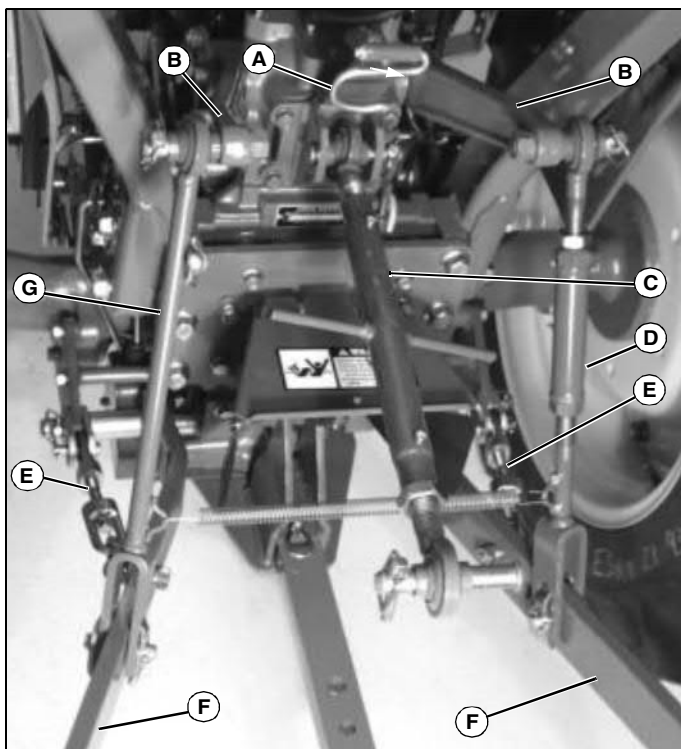


M97724a

- A - Clutch Pedal
- B - Turn Signal Switch
- C - Optional Front Wheel Drive (MFWD) Lever
- D - Transmission Gear Shift Lever
- E - Light Switch
- F - Engine Speed Hand Throttle
- G - Right Turn Brake Pedal
- H - Left Turn Brake Pedal
- I - Engine Speed Foot Throttle
- J - Park Brake Lever
- K - Steering Wheel
- L - Transmission Range Shift Lever
- M - Differential Lock Lever
- N - Selective Control Valve (SCV) Lock Lever
- O - Optional Selective Control Valve (SCV) Lever
- P - Rockshaft Adjustable Depth Stop Knob
- Q - Rockshaft Control Lever
- R - Rockshaft Rate-of-Drop Control Knob
- S - Rear PTO Control Lever
- T - Mid PTO Control Lever

OPERATING

Three-Point Hitch



M97662

- A - Center Link Storage Hook
- B - Lift Arms
- C - Center Link
- D - Lift Link - Adjustable
- E - Sway Link - Adjustable
- F - Draft Link
- G - Lift Link - Non-Adjustable

Hood Controls



M97684

- A - Hood Release Latch

Using Step



M97692

The step is located on left side of machine.

Adjusting Operator Seat

Before starting engine to drive machine, adjust operator seat to desirable position.



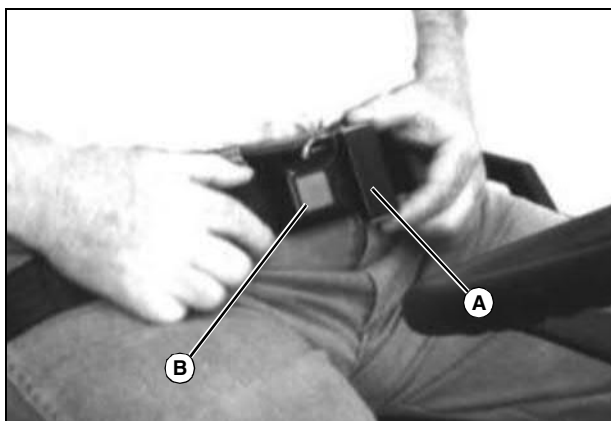
M97704

1. Move seat positioning lever (A) up.
2. Slide seat forward or rearward to desired position.
3. Release lever to lock seat in position. Make sure all controls can be easily accessed.

OPERATING

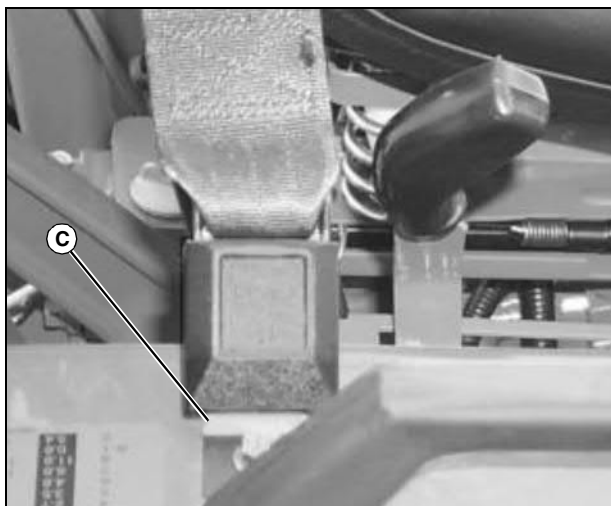
Using Seat Belt

CAUTION: Avoid injury! Use a seat belt when you operate with a Roll-Over Protective Structure (ROPS) to minimize chance of injury from an accident, such as an overturn.
Do not use a seat belt if operating without a ROPS.



M61567

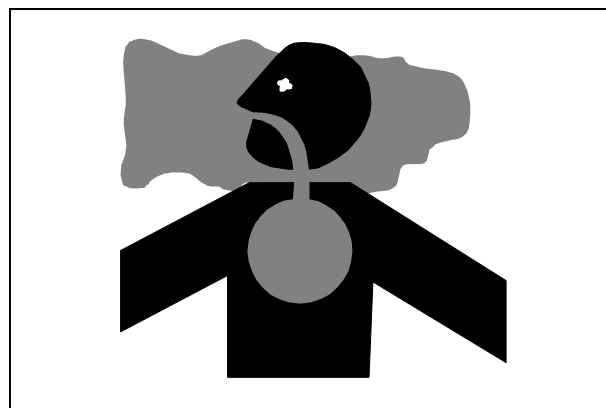
1. Adjust seat belt (A) for proper fit and connect as shown. Listen for a click when inserted properly into latch. To release seat belt, press button (B).



M97695

2. When the seat belt is not being used, push ends of seat belt onto holders (C) located on both fenders.

Testing Safety Systems



MIF

CAUTION: Avoid injury! Engine exhaust fumes contain carbon monoxide and can cause serious illness or death.

Move the machine to an outside area before running the engine.

Do not run an engine in an enclosed area without adequate ventilation.

- Connect a pipe extension to the engine exhaust pipe to direct the exhaust fumes out of the area.
- Allow fresh outside air into the work area to clear the exhaust fumes out.

Use the following checkout procedure to check for normal operation of machine.

If there is a malfunction during one of these procedures, Do not operate machine. **See your John Deere dealer for service.**

Perform these tests in a clear open area. Keep bystanders away.

Testing Neutral Start Switch

1. Sit on operator's seat.
2. Lock park brake.
3. Push the rear and mid-PTO knobs to the disengaged/off position.
4. Depress clutch pedal completely and:
 - Move the transmission range shift lever to the N (neutral) position.
 - Move the transmission gear shift lever to any position other than N (neutral) position.

OPERATING

5. Turn key switch to start position.
 - Engine must not crank.
6. Turn key switch to off position and move transmission gear shift lever to the N (neutral) position.

Testing Rear PTO Knob

1. Sit on operator's seat.
2. Lock park brake.
3. Push the rear and mid-PTO knobs to the disengaged/off position.
4. Depress clutch pedal completely and move the transmission range and gear shift levers to the N (neutral) position.
5. Pull the rear PTO knob to the engaged/on position.
6. Turn key switch to start position.
 - Engine must not crank.
7. Push the rear PTO knob to the disengaged/off position.
8. Turn key switch to off position.

Testing Rear PTO/Seat Switch Interface

1. Sit on operator's seat.
2. Lock park brake.
3. Push the rear and mid-PTO knobs to the disengaged/off position.
4. Depress clutch pedal completely and:
 - Move the transmission range and gear shift levers into the N (neutral) position.
5. Start machine engine.
6. Release clutch pedal.
7. Pull the rear PTO knob to the engaged/on position.
8. Raise up from operator's seat. Do not dismount machine.
9. Engine should stop. Engine shut-off solenoid must de-energize in 1/2 second, causing the engine to stop.
10. Push the rear PTO knob to the disengaged/off position.
11. Turn key switch to off position.

Testing Mid-PTO/Seat Switch Interface

1. Sit on operator's seat.
2. Lock park brake.

3. Push the rear and mid-PTO knobs to the disengaged/off position.
4. Depress clutch pedal completely and:
 - Move the transmission range and gear shift levers into the N (neutral) position.
5. Start machine engine. Set engine speed at 1500 rpm.
6. Release the clutch.
7. Raise up from operator's seat. Do not dismount machine.
8. Pull the mid-PTO knob to the engaged/on position.
9. Pull the rear PTO knob to the engaged/on position.
10. Engine should begin to stop.

Testing Rear PTO/Park Brake Interface

1. Sit on operator's seat.
2. Lock park brake.
3. Push the rear and mid-PTO knobs to the disengaged/off position.
4. Depress clutch pedal completely and:
 - Move the transmission range and gear shift levers into the N (neutral) position.
5. Start machine engine. Set engine speed at 1500 rpm.
6. Release clutch pedal.
7. Raise up from operator's seat. Do not dismount machine.
8. Pull the rear PTO knob to the engaged/on position.
 - Rear PTO should operate.
9. Unlock park brake.
10. Engine should begin to stop.

Testing Seat Switch

1. Sit on operator's seat.
2. Lock park brake.
3. Push the rear and mid-PTO knobs to the disengaged/off position.
4. Depress clutch pedal completely and move the transmission range and gear shift levers into the N (neutral) position.
5. Start machine engine. Set engine speed at 1500 rpm.
6. Depress clutch pedal completely and:
 - Move the transmission gear shift lever to any position



Suggest:

If the above button click is invalid.

Please download this document

first, and then click the above link

to download the complete manual.

Thank you so much for reading

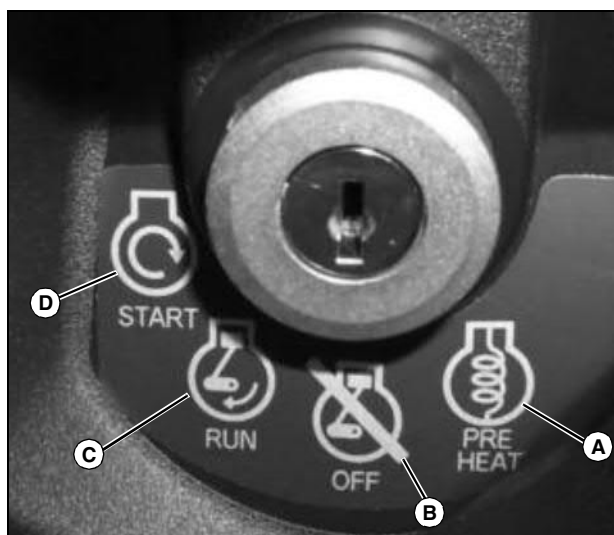
OPERATING

other than N (neutral) position.

7. Raise up from operator's seat while depressing clutch pedal completely.
8. Engine should stop.
9. Turn key switch to off position and move transmission gear shift lever to the N (neutral) position.

Using Ignition Key Switch

IMPORTANT: Avoid damage! When the machine is being serviced or when not in use, the key switch should be in off position and the key removed. With the key switch in the preheat/cold starting position, follow the cold starting procedure as shown on the label located immediately below the key switch.



M97686

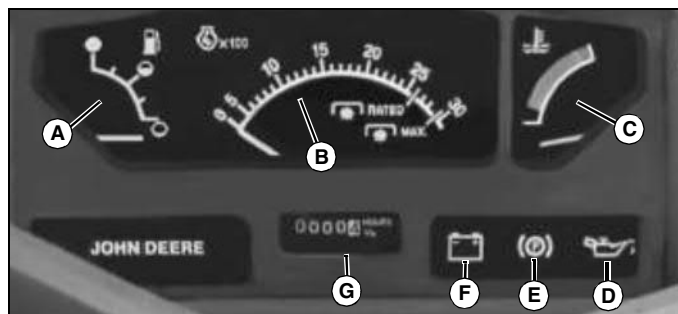
Position A - Preheat/Cold Start - Rotate the key to this position to allow the engine to preheat. The engine should not run.

Position B - Off - With the key in this position, all switched power is off, and the engine should not run.

Position C - Run - Rotate the key to this position and the engine oil pressure light and battery charging lights should illuminate. You will also hear a clicking noise when the engine fuel shut-off solenoid engages.

Position D - Start - Rotate the key to this position to allow the starter to engage the engine flywheel and start the engine. When the key is released, it will automatically return to the run position, and the engine will continue to run.

Understanding Instrument Panel



M97702

A - Fuel Gauge - Shows approximately how much fuel is in the fuel tank.

B - Tachometer - Shows engine speed in increments of 100 rpm. Example: If needle is pointing at 20, (20 x 100) = 2000 rpm.

- Slow idle speed = 1000 rpm
- Rated speed = 2600 rpm
- Fast idle speed = 2835 rpm

C - Engine Coolant Temperature Gauge - When the needle of this gauge moves to the red zone, it is indicating that the engine coolant is approaching dangerously hot temperatures. If this happens, reduce engine load immediately. Reduce engine RPM to idle speed and check for obstructions blocking air flow to the radiator. Clean grille and if needle continues to stay in red zone, stop engine. Allow engine to cool, check coolant level, and add coolant if necessary.

D - Engine Oil Pressure Light - This light will illuminate when the ignition key is in the on position with the engine not running. If this light illuminates while the engine is running, engine oil pressure is too low. Stop engine.

E - Park Brake Light - This light should illuminate when the parking brake is locked.

F - Alternator/Battery Charging Light - This light will illuminate when the ignition key is in the on position with the engine not running. If this light turns on while the engine is running, the alternator output is too low. Move the throttle lever to the full throttle position. Stop the engine if light remains on.

G - Hourmeter - Shows total number of accumulated running hours. Use the hour meter as a guide when servicing various components of this machine.

<https://www.ebooklibonline.com>

Hello dear friend!

Thank you very much for reading.

Enter the link into your browser.

The full manual is available for immediate download.

<https://www.ebooklibonline.com>