

**GT242, GT262, and GT275
Lawn and Garden
Tractors
(Serial No. 010001 –)**

**OPERATOR'S
MANUAL**

**John Deere
Lawn & Grounds Care Division
OMM123238 E6**

North American Version
Litho in U.S.A
English

INTRODUCTION

THANK YOU for purchasing a John Deere product.

Read this manual and your attachment manuals thoroughly. Failure to do so could result in personal injury or equipment damage.



WARNING: The Engine Exhaust from this product contains chemicals known to the State of California to cause cancer, birth defects or other reproductive harm.

CALIFORNIA Proposition 65 Warning

This manual should be considered a permanent part of your machine and should remain with the machine when you sell it.

Measurements in this manual are metric units and their U.S. customary equivalents. RIGHT-HAND and LEFT-HAND sides are determined by facing in the direction the machine will travel when going forward. When you see a broken line arrow (- - - ->) it indicates the part it is pointing to is hidden.

Record identification numbers below. Be sure to record all the numbers to help in tracing the machine if it is stolen. You also need to give these numbers to your dealer when you order parts.

Date of Purchase:

Dealer Name: _____ **Phone:** _____

Vehicle Serial Number:
□ □ □ □ □ □ □ □ □ □ □ □ □ □ □ □



Engine Serial Number:
□ □ □ □ □ □ □ □ □ □ □ □ □ □ □ □

TABLE OF CONTENTS

	Page
Safety Signs	1
Controls	6
Operating	10
Operating the Mower	36
Lawn Care	48
Replacement Parts	60
Service Intervals	62
Service Machine Safely	63
Service - Transmission	66
Service - Engine	70
Service - Steering and Brakes	78
Service - Mower	80
Service - Electrical	94
Service - Miscellaneous	102
Removing and Storing Mower	107

<https://www.ebooklibonline.com>

Hello dear friend!

Thank you very much for reading.

Enter the link into your browser.

The full manual is available for immediate download.

<https://www.ebooklibonline.com>

TABLE OF CONTENTS

	Page
Installing Mower	112
Troubleshooting	115
Storing Vehicle	121
Assembly	124
Specifications	132
Warranty Information	139
Index	143
John Deere Service Literature Available	151

All information, illustrations and specifications in this manual are based on the latest information at the time of publication. The right is reserved to make changes at any time without notice.

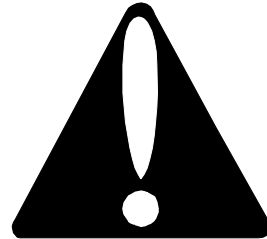
COPYRIGHT© 1996
John Deere Horicon Works
All rights reserved
Previous Editions
COPYRIGHT© 1995, 1994, 1993, and 1992

SAFETY SIGNS

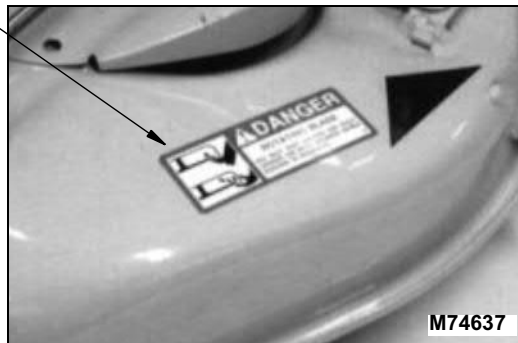
Safety-Alert Symbol

Read and recognize safety information. Be alert to the potential for personal injury when you see this safety-alert symbol.

On your machine safety labels, the words **DANGER**, **WARNING**, and **CAUTION** are used with this safety-alert symbol. **DANGER** identifies the most serious hazards. In this manual, the word **CAUTION** and this symbol call attention to safety messages.

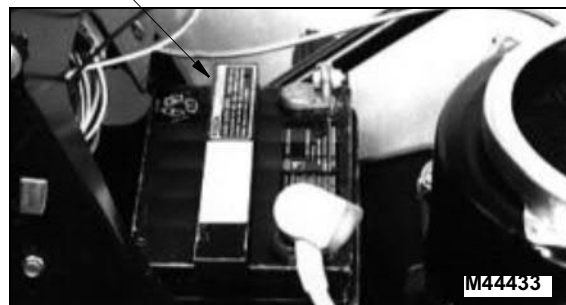
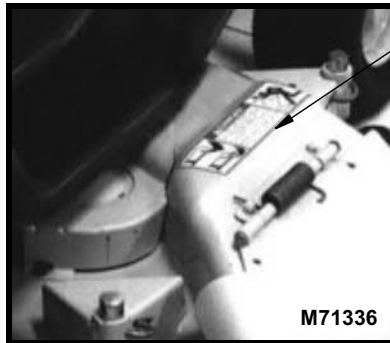


Machine Safety Labels



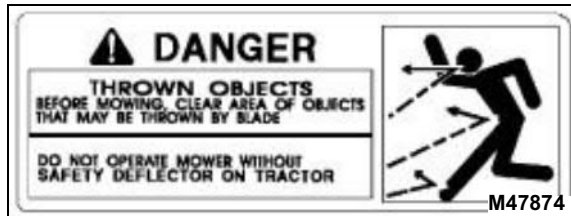
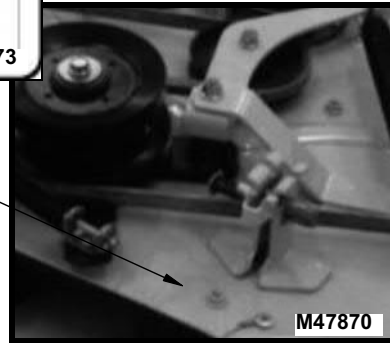
SAFETY SIGNS

Machine Safety Labels Continued:



SAFETY SIGNS

Machine Safety Labels Continued:



SAFETY SIGNS

Machine Safety Labels Continued:



SAFETY SIGNS

Machine Safety Labels Continued:



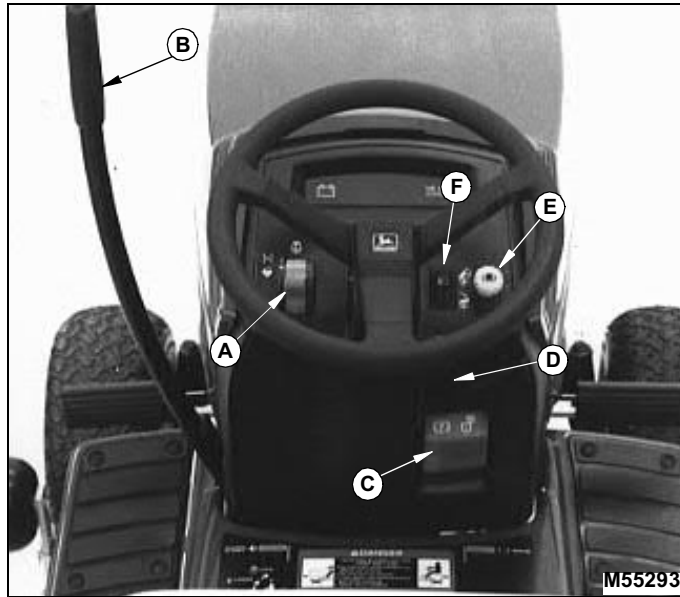
Certification Label

This OPEI label on your mower indicates that this model has been certified by an independent laboratory for compliance with American National Standard B-71.1-1990, "Safety Specifications" for Power Lawn Mowers, Lawn and Garden Tractors, and Lawn Tractors.



CONTROLS

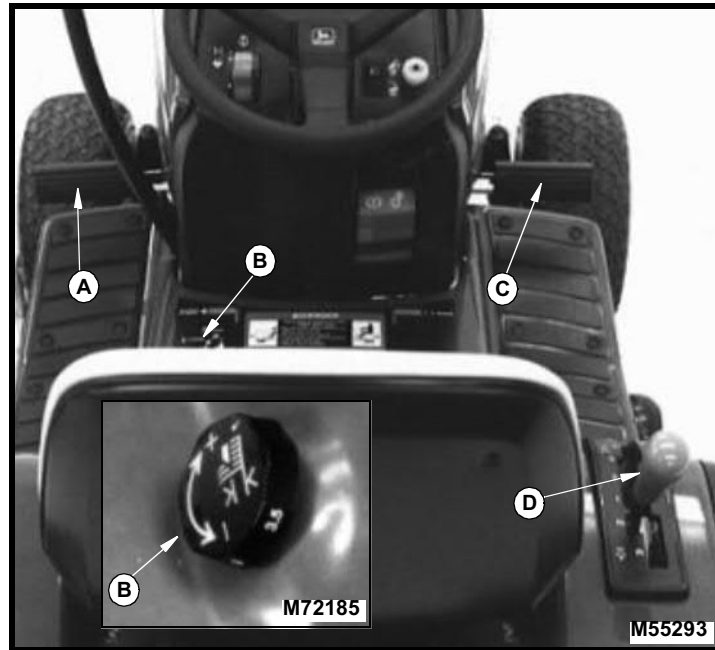
Dash Controls (All Models)



- A - Throttle\Choke lever Controls engine speed
- B - Lift lever Raises and lowers attachments
- C - Park brake lever Engages park brake
- D - Key..... Starts engine
- E - PTO knobEngages attachments
- F - Light switch Push to engage lights

CONTROLS

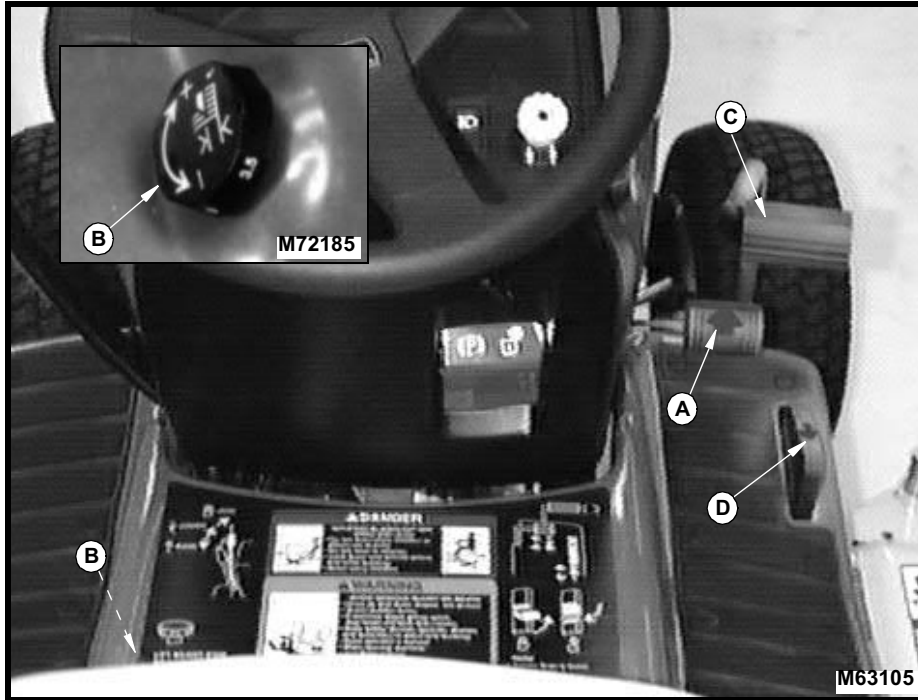
Foot\Platform Controls (Gear - GT242 and GT262)



- A - Clutch pedal Push to change gears
- B - Mower depth control Sets mowing height
- C - Brake pedal Stops machine
- D - Gear shift lever Changes gears

CONTROLS

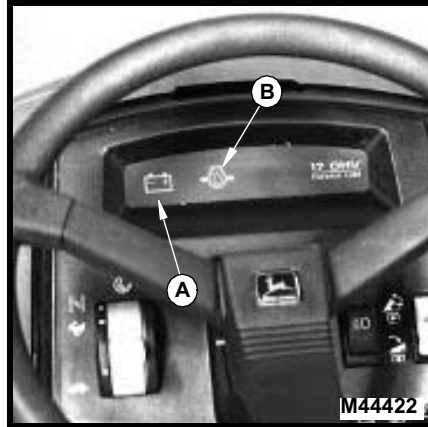
Foot/Platform Controls (Hydrostatic - GT275)



- A - Forward travel pedal Starts forward travel
- B - Mower depth control Sets mowing height
- C - Brake pedal Stops machine
- D - Reverse travel pedal Starts reverse travel

CONTROLS

Indicator Lights



- A - Battery Discharge Light
- B - Engine Oil Pressure Light

OPERATING

SAFETY



Operate Safely

- Check brake action before you operate. Adjust or service brakes as necessary.
- Inspect machine before you operate. Be sure hardware is tight. Repair or replace damaged, badly worn, or missing parts. Be sure guards and shields are in good condition and fastened in place. Make any necessary adjustments before you operate.
- Clear work area of objects that might be thrown. Keep people and pets out of the work area. Stop machine if anyone enters the area.
- If you hit an object, stop the machine and inspect it. Make repairs before you operate. Keep machine and attachments properly maintained and in good working order.
- DO NOT leave machine unattended when it is running.
- Only operate during daylight or with good artificial light.
- Be careful of traffic when operating near or crossing roadways.
- Do not wear radio or music headphones while operating the machine. Safe operation requires your full attention.

Park Safely

- Stop machine on a level surface, not on a slope.
- Disengage PTO
- Lower attachments to the ground.
- Engage park brake.
- STOP engine.
- Remove key.
- Before you leave the operator's seat, wait for engine and all moving parts to STOP.



Suggest:

If the above button click is invalid.

Please download this document

first, and then click the above link

to download the complete manual.

Thank you so much for reading

OPERATING

Rotating Blades are Dangerous - Protect Children and Prevent Accidents



PROTECT CHILDREN:

- Never assume that children will remain where you last saw them. Children are attracted to mowing activity, stay alert to the presence of children.
- Keep children in the house when you are operating the machine.
- Turn machine off if a child enters the mowing area.
- Use extra care when you come to blind corners, shrubs, trees, or other objects that may block your vision.
- DO NOT let children or untrained person operate the machine.
- DO NOT carry or let children ride on machine or any attachment. DO NOT tow children in a cart or trailer.

HELP PREVENT SERIOUS OR FATAL ACCIDENTS:

- Be alert at all times, drive forward carefully. People especially children can move quickly into the mowing area before you know it.
- Back carefully. Shut off PTO and look behind the machine carefully, especially for children, before you back up.
- DO NOT mow in reverse unless it is absolutely necessary.
- Shut off PTO when you are not mowing.
- DO NOT operate machine if you are under the influence of drugs or alcohol.

<https://www.ebooklibonline.com>

Hello dear friend!

Thank you very much for reading.

Enter the link into your browser.

The full manual is available for immediate download.

<https://www.ebooklibonline.com>