

**4475 and 5575  
Skid-Steer  
Loaders**  
(Serial No. 010001 – )

**OPERATOR'S  
MANUAL**

**John Deere  
Lawn & Grounds Care Division  
OMM123792 B5**

Export Version  
Litho in U.S.A  
English

## INTRODUCTION

---

---

**READ THIS MANUAL** carefully to learn how to operate and service your machine correctly. Failure to do so could result in personal injury or equipment damage. This manual and safety signs on your machine may also be available in other languages (see your John Deere dealer to order).

**THIS MANUAL SHOULD BE CONSIDERED** a permanent part of your machine and should remain with the machine when you sell it.

**MEASUREMENTS** in this manual are given in both metric and customary U.S. unit equivalents. Use only correct replacement parts and fasteners. Metric and inch fasteners may require a specific metric or inch wrench.

**RIGHT-HAND AND LEFT-HAND** sides are determined by facing the direction of forward travel.

**BEFORE DELIVERING THIS MACHINE**, your dealer performed a predelivery inspection to ensure best performance.

**THIS SKID STEER LOADER IS DESIGNED SOLELY** for use in customary agricultural and forestry operations, for park and amenity area maintenance, and for winter work or similar operation (“INTENDED USE”). Use in any other way is considered as contrary to the intended use.

The manufacturer accepts no liability for damage or injury resulting from this misuse, and these risks must be borne solely by the user. Compliance with and strict adherence to the conditions of operation, service and repair as specified by the manufacturer also constitute essential elements for the intended use.

---

## INTRODUCTION

---

---

**THIS SKID STEER LOADER SHOULD BE OPERATED,** serviced and repaired only by persons familiar with all its particular characteristics and acquainted with the relevant safety rules (accident prevention). The accident prevention regulations, all other generally recognized regulations on safety and occupational medicine and the road traffic regulations must be observed at all times.

Any arbitrary modifications carried out on this skid steer loader will relieve the manufacturer of all liability for any resulting damage or injury.

<b>Date of Purchase:</b> _____
-----------------------------------

<b>Dealer Name:</b> _____	<b>Phone:</b> _____
------------------------------	------------------------



**Model 4475**

---

**<https://www.ebooklibonline.com>**

Hello dear friend!

Thank you very much for reading.

Enter the link into your browser.

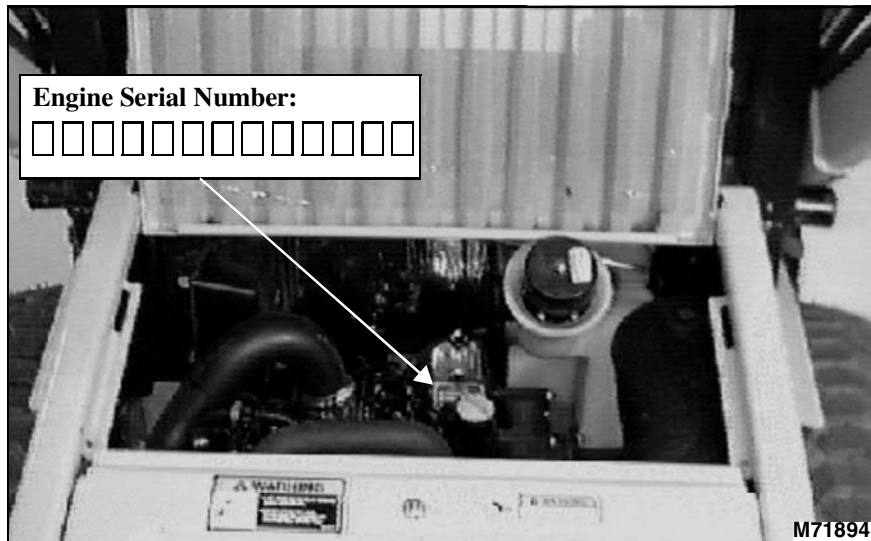
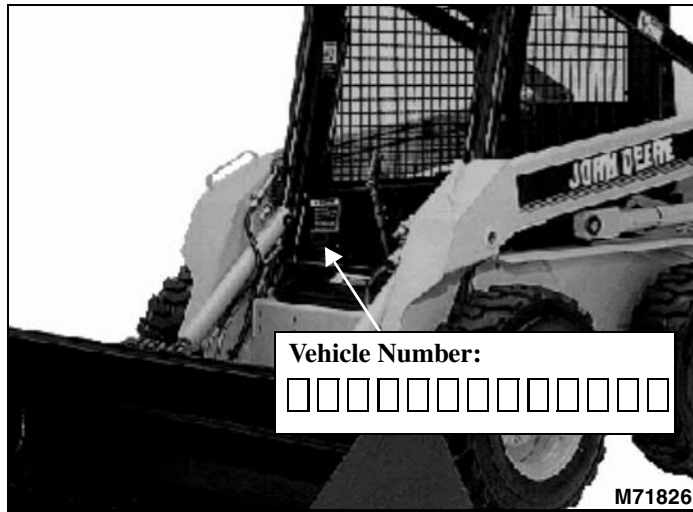
The full manual is available for immediate download.

**<https://www.ebooklibonline.com>**

## INTRODUCTION

---

**WRITE PRODUCT IDENTIFICATION NUMBERS (P.I.N.)** in the space provided below. Accurately record all the numbers to help in tracing the machine should it be stolen. Your dealer also needs these numbers when you order parts. File the identification numbers in a secure place off the machine.



## TABLE OF CONTENTS

---

	Page
<b>Safety</b>	
Pictorial Safety Signs.....	1
Machine Safety Labels .....	1
<b>Controls</b>	
Hand Controls.....	5
Foot Controls .....	6
Overhead Panel Controls .....	6
<b>Operating</b>	
Safety:	
Operator Training Required.....	8
Use Seat Belt Properly .....	8
Use Handholds and Steps .....	8
Operate Safely.....	9
Protect Children and Prevent	
Accidents .....	10
Keep Riders Off .....	10
Avoid Tipping .....	11
Park Safely .....	11
Wear Appropriate Clothing .....	12
Check Wheel Bolts .....	12
Transport Safely .....	12
Adjustments:	
Seat .....	13
Driving:	
Entering and Exiting Loader .....	14
Using Fuel Shut-off Valve .....	15
Using the Park Brake.....	15
Using Service/Run Switch .....	15
Using Electronic Instrument Monitor (EIM) .....	16
Using Select Switches .....	22
Using Cold Start Button .....	24
Starting the Engine .....	25
Stopping the Engine .....	28
Using Drive Controls.....	29

---

## TABLE OF CONTENTS

---

	Page
<b>Operating (Continued)</b>	
Using Auxiliary Boom Hydraulic Control Lever (5575) .....	30
Using Boom Pedal .....	31
Using Bucket Pedal.....	32
Using Boom Stops .....	33
Using Emergency Exit.....	33
Using “Quick-Attach” Attachment Mounting System .....	34
<b>Operating Tips:</b>	
Filling the Bucket.....	36
Digging .....	37
Dumping the Bucket.....	38
Returning the Bucket to the Loading Position .....	38
Bulldozing with the Bucket .....	39
Dislodging the Machine.....	39
Transporting Loaded Bucket .....	40
Job Layout.....	40
Daily Operating Checklist.....	41
Testing Safety Systems .....	41
Craning the Skid Steer Loader.....	44
<b>Replacement Parts</b>	
John Deere quality service parts.....	45
<b>Service Machine Safely</b>	
Practice Safe Maintenance .....	46
Wear Appropriate Clothing.....	47
Handling Waste Product and Chemicals.....	47
Avoid High Pressure Fluids.....	48
Cab Tilting Tool Kit.....	48
<b>Service Interval Chart</b>	
Hourly Interval.....	49

## TABLE OF CONTENTS

---

	Page
<b>Service - Lubrication</b>	
Grease .....	53
Lubricating Axles .....	53
Lubricate Boom and Cylinders.....	54
Lubricate Mounting Plate Latches and Cylinders .....	54
<b>Service - Engine</b>	
Engine Oil .....	55
Cleaning Radiator and Oil Cooler Fins .....	58
Replacing Primary Air Cleaner Element .....	59
Replacing Secondary Air Cleaner Element .....	60
Service Cooling System Safely.....	61
Engine Coolant .....	61
Checking Coolant Level.....	62
Draining Cooling System .....	63
Flushing Cooling System .....	64
Checking and Adjusting Fan Belt.....	66
Replacing In-Line Fuel Filter.....	67
Adjusting Throttle Control .....	67
<b>Service - Transmission and Hydraulics</b>	
Transmission and Hydraulic Oil .....	69
Checking Hydraulic Reservoir Oil Level .....	69
Cleaning Reservoir Cap and Breather.....	70
Changing Hydraulic Oil Filter .....	71
Changing Hydraulic Oil .....	71
Adjusting Neutral Creep.....	73
<b>Service - Final Drive</b>	
Oil .....	75
Lubricating Final Drive (2).....	75
Adjusting Final Drive Chain .....	75
Final Drive Chain Routing.....	76

---

## TABLE OF CONTENTS

---

	Page
<b>Service - Steering, Brakes, and Pedals</b>	
Oil.....	77
Lubricate Steering, Foot Controls, Parking Brake Linkages and Neutralizer Plate .....	77
Adjusting Control Levers (Parallel).....	78
Adjusting Control Lever Stops.....	79
Adjusting Park Brake.....	80
Adjusting Boom and Bucket Foot Pedals.....	81
Adjusting Auxiliary Boom Hydraulic Control Lever Linkage (5575) .....	81
<b>Service - Electrical</b>	
Cleaning or Replacing Battery .....	83
Checking Battery Electrolyte Level .....	85
Charging the Battery .....	87
Charging Rates .....	89
Using Booster Battery .....	90
Replacing Fuses .....	91
Replacing EIM Panel Light Bulb .....	92
Replacing Bulbs (5575).....	92
<b>Service - Miscellaneous</b>	
Checking Tire Pressure.....	93
Adjusting Loader Boom Pads.....	94
Opening Rear Service Door .....	95
Opening Engine Cover.....	95
Removing Engine Side Panels.....	96
Removing Belly Pan.....	96
Refueling Machine .....	97
Raising and Blocking Loader .....	99
<b>Troubleshooting</b>	
Using Troubleshooting Chart .....	100
Electronic Instrument Monitor (EIM).....	100
Hydraulic System .....	103
Engine .....	105
Electrical.....	107

---

## TABLE OF CONTENTS

---

	<b>Page</b>
<b>Storing Vehicle</b>	
Storing Safety .....	109
Preparing Engine For Storage .....	109
Storing the Loader .....	109
Removing The Vehicle From Storage.....	110
<b>Specifications</b>	
Engine.....	111
Fuel System.....	112
Electrical System .....	112
Capacities .....	112
Hydraulic System.....	113
Hydrostatic Transmission .....	113
Ground Speed .....	113
Dimensions .....	114
Tires.....	115
Recommended Lubricants.....	115
Buckets .....	116
Metric Bolt and Cap Screw Torque Values.....	117
Unified Inch Bolt and Cap Screw Torque Values.....	120

All information, illustrations and specifications in this manual are based on the latest information at the time of publication. The right is reserved to make changes at any time without notice.

COPYRIGHT© 1995  
John Deere Horicon Works  
All rights reserved  
Previous Editions  
COPYRIGHT© 1994

## **NOTES**

---

---

---

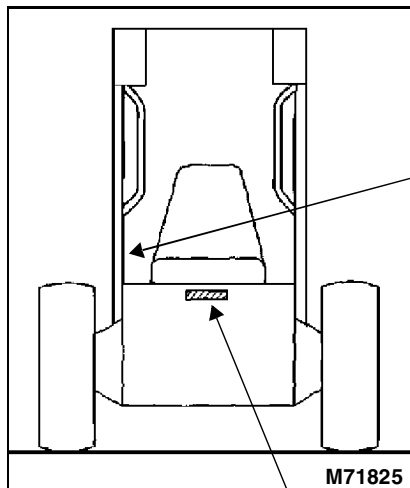
# SAFETY SIGNS

## Pictorial Safety Signs

At several important places on this machine safety signs are affixed intended to signify potential danger. The hazard is identified by a pictorial in a warning triangle. An adjacent pictorial provides information how to avoid personal injury. These safety signs, their placement on the machine and a brief explanatory text are shown in this Safety Signs section.



## Machine Safety Labels



### AVOID DEATH

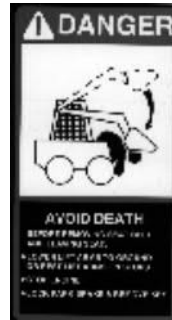
- Lift arm stops must be engaged
- Opening lines for service or part failure can cause lift arms to drop



### AVOID INJURY

- Read Operator's Manual
- Know location and function of controls
- Keep safety devices working
- Keep screen and windows in place.
- Keep children and others away
- Never carry riders
- Lower lift arms, engage park brake, stop engine and remove key before leaving
- Keep cab clean, especially pedal area

# SAFETY SIGNS



## AVOID DEATH

Before removing seat belt and leaving seat:

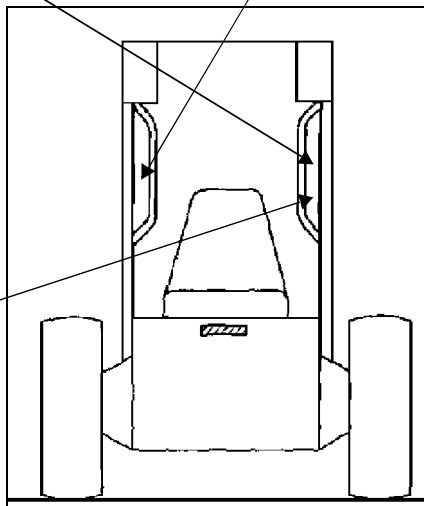
- Lower lift arms to ground or rest lift arms on stops
- Stop engine
- Lock park brake & remove key



## AVOID OVERTURN

- Carry load low
- Avoid steep slopes and high speed turns
- Never carry more than 1250 lbs. (570 kg.)

Decal for Model 4475 shown.



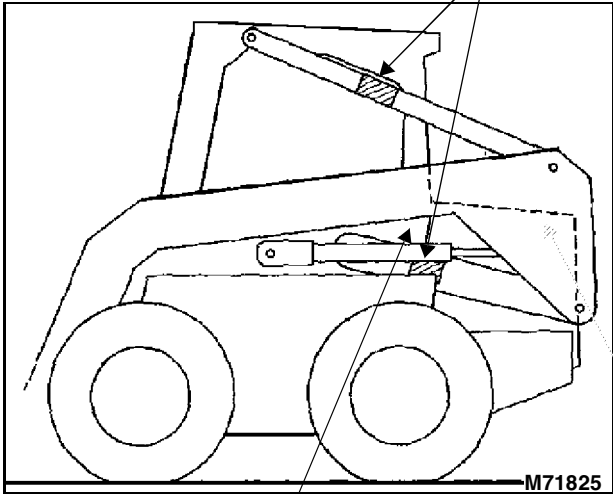
M71825

# SAFETY SIGNS

---

**PINCH AREA**  
Keep away






Use only proper cab jack kit to tilt cab.


Read cab jack kit use instructions before tilting cab.

Remove cab hardware only after cab jack is installed.

Failure to do so may cause cab to fall causing serious injury or death.



Appears on lower cab post



**AVOID AN EXPLOSION**

- See operator's manual
- Do not use starting fluid
- Air electric heater may ignite fluid

Appears on air cleaner canister inside engine compartment

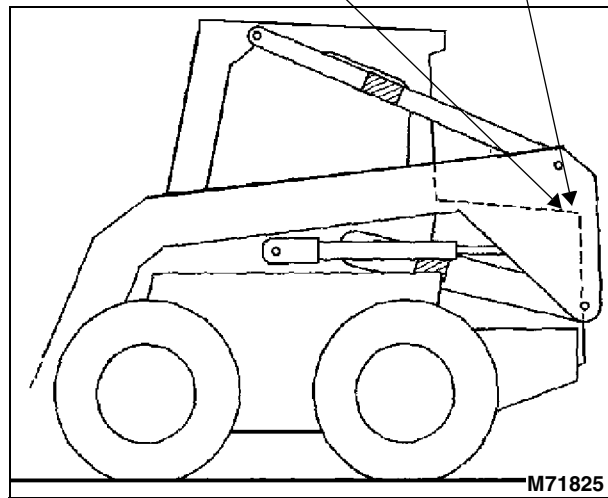
# SAFETY SIGNS

---

---



- Lift arms move near engine hood and frame
- Never stand or lean anywhere on loader or linkage will crush you





**Suggest:**

**If the above button click is invalid.**

**Please download this document**

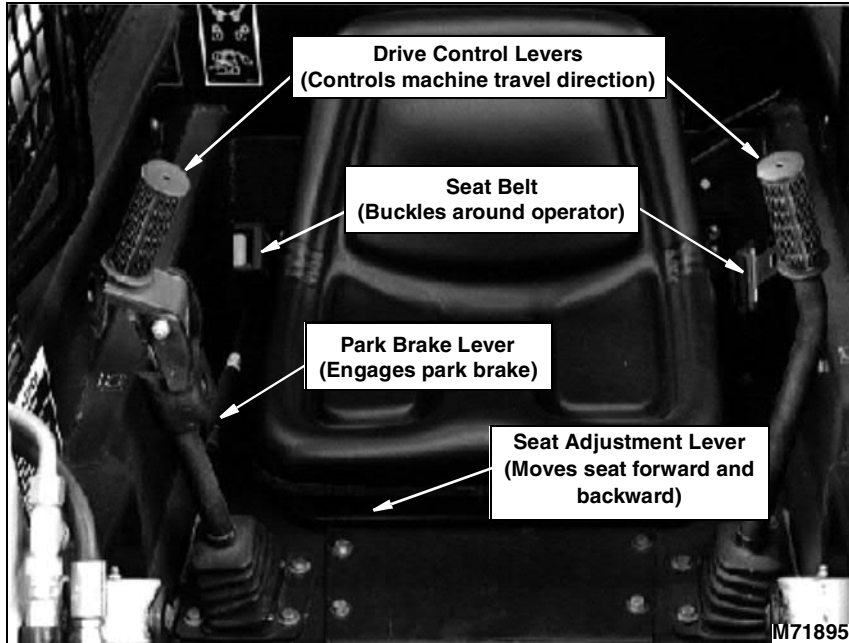
**first, and then click the above link**

**to download the complete manual.**

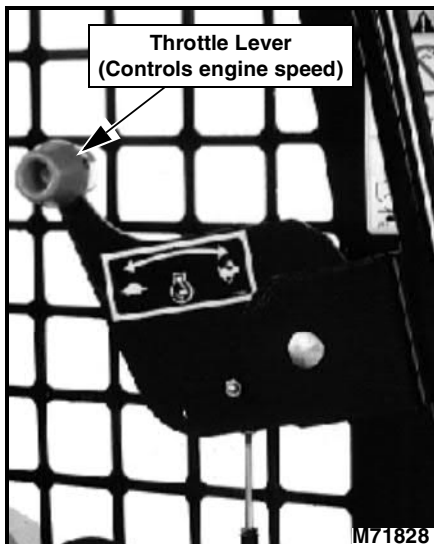
**Thank you so much for reading**

# CONTROLS

## Hand Controls



(Model 4475 shown with Optional Auxiliary Boom Hydraulic Control Lever installed.)



**<https://www.ebooklibonline.com>**

Hello dear friend!

Thank you very much for reading.

Enter the link into your browser.

The full manual is available for immediate download.

**<https://www.ebooklibonline.com>**