

John Deere

1758

Forwarder

OMF062130

**Operator's and
Maintenance Manual**

Serial Number WJ1758X002001-

ENG

OPERATOR'S AND MAINTENANCE MANUAL

John Deere 1758 Forwarder

All information, illustrations and specifications in this manual are based on the latest information available at the time of publication. The right is reserved to make changes at any time without notice.

COPYRIGHT E 2001
DEERE & COMPANY
Moline, Illinois
All rights reserved.

Table to enter serial No. and dealer

Machine serial No.
Dealer

The information contained in this manual is comprised of regulations and instructions which will assist the operator to operate the machine in a safe and efficient manner. Make sure this manual is always close at hand and available to all who work on the machine.

Should this manual be lost or should it deteriorate to an unintelligible state, contact John Deere or your nearest John Deere dealer for a replacement manual.

If you sell the machine, be sure to give this manual to the new owners.

Continuing improvements in the design of this machine can lead to changes in detail which may not be reflected in this manual. Consult John Deere or your local John Deere dealer for the latest available information of your machine or for questions regarding information in this manual.



CAUTION

Only persons whose training has been approved by John Deere are permitted to operate John Deere machinery.

Improper operation and maintenance of this machine can be hazardous and could result in serious injury or death.

Therefore, it is of paramount importance that all the instructions given in this manual and during training be followed when the machine is operated or serviced.

The safety rules are given from page 3-1.

<https://www.ebooklibonline.com>

Hello dear friend!

Thank you very much for reading.

Enter the link into your browser.

The full manual is available for immediate download.

<https://www.ebooklibonline.com>

OPERATOR AND
MAINTENANCE MANUAL

John Deere Forwarder

1758

INTRODUCTION	1
WARRANTY	2
SAFETY RULES	3
CONTROLS AND SIGNAL LIGHTS	4
OPERATING THE FORWARDER	5
MAINTENANCE	6
HYDRAULIC SYSTEM	7
ELECTRICAL SYSTEM	8
POWER TRANSMISSION	9
BOOM	10
EQUIPMENT	11
TECHNICAL SPECIFICATIONS	12
TROUBLESHOOTING	13

1.	Introduction	1-1
1.1	General	1-1
1.2	Where to Find Decals and Serial Number	1-3
2.	Warranty	2-1
2.1	Warranty Information	2-1
3.	Safety Instructions	3-1
3.1	Safety Features	3-1
3.2	General	3-2
3.3	Safety Symbol	3-2
3.3.1	Signal Words	3-2
3.4	General Safety Rules	3-3
3.4.1	Protective Structures	3-5
3.4.2	Boarding the Machine	3-6
3.5	Operating Safety Precautions	3-7
3.5.1	Alarms	3-9
3.5.2	Secondary Exit	3-10
3.5.3	Driving on Frozen Waters	3-11
3.5.4	Power Cables	3-12
3.5.5	Driving on Public Roads and Other Transport Driving	3-13
3.6	Servicing Safety Precautions	3-14
3.7	Fire Prevention	3-18
3.7.1	What to Do if the Machine Catches Fire	3-20
3.8	Safety Signs	3-21
3.8.1	Safety Sign Information	3-21
3.8.2	Positions in the Machine	3-24
3.8.3	Decals	3-25
4.	Controls and Signal Lights	4-1
4.1	General	4-1
4.2	Front Dashboard	4-2
4.3	Start Key Positions	4-4
4.4	Window Washers and Wipers	4-5
4.5	Overhead Panel Switches	4-6
4.6	Warning Lights	4-7
4.6.1	Warning Lamps and Buzzer	4-8

4.7	Left Arm Control Panel	4-9
4.8	Right Arm Control Panel	4-10
4.9	Boom Controls; Left-Hand Side Lever	4-11
4.10	Boom Controls; Right Hand Side Lever	4-11
4.11	Air Conditioner Controls	4-12
4.12	Engine Heating Timer (Opt. Eq.)	4-13
5.	How to Operate the Forwarder	5-1
5.1	Operation	5-1
5.1.1	Function of Seat Safety Switch	5-1
5.1.2	Emergency Stop	5-2
5.1.3	How to Operate the Boom	5-2
5.1.4	Brakes	5-3
5.1.5	Frame Brake	5-4
5.1.6	Steering	5-5
5.1.7	High/Low Gear and Rear-Wheel Drive	5-6
5.1.8	Using the Differential Lock-Up	5-7
5.1.9	Operating the Decking Blade (Optional Equipment)	5-8
5.2	Driving	5-9
5.2.1	Before Starting the Engine for the First Time in a Working Day .	5-9
5.2.2	Operating the Engine	5-10
5.2.3	Off-Road Driving	5-13
5.2.4	Driving on Road	5-15
5.3	Transporting the Machine	5-16
5.4	How to Lift the Cab	5-17
5.5	How to Lower the Cab	5-19
5.6	Towing the Machine	5-19
5.6.1	Stowing a Disabled Boom	5-24
6.	Maintenance	6-1
6.1	Servicing Safety Precautions	6-2
6.2	General Maintenance Instructions	6-3
6.2.1	Tightening Torque for Bolted Joints	6-4
6.2.2	Welding Instructions	6-5
6.2.3	Instructions for Cleaning of Lexan/Marguard Windows	6-7
6.3	Wheels	6-8
6.3.1	Changing Wheels	6-9
6.3.2	Anti-Slip Fitting	6-10

6.3.3	Bogie Tracks, Fitting	6-11
6.4	Recommended Lubricants and Fluids	6-13
6.4.1	Capacities	6-14
6.4.2	Diesel Fuel	6-15
6.4.3	Engine Oil	6-15
6.4.4	Coolant	6-16
6.4.5	Grease	6-16
6.4.6	Hydraulic Oil	6-17
6.4.7	Brake Fluid	6-17
6.4.8	Gear Oil	6-17
6.5	Maintenance Intervals	6-18
6.5.1	Checklist	6-18
6.5.2	Required Parts	6-20
6.6	Detailed Maintenance	6-22
6.6.1	Daily or Every Ten Running Hours	6-22
6.6.2	Weekly Maintenance or Every 50 Running Hours	6-30
6.6.3	Every 250 Running Hours	6-33
6.6.4	Every 500 Running Hours	6-41
6.6.5	Every 1000 Running Hours	6-45
6.6.6	Every 2000 Running Hours	6-50
6.6.7	Maintenance after Every Six Months	6-53
6.6.8	Annual Maintenances	6-54
6.7	Boom Maintenance	6-55
6.7.1	Assembly Instructions	6-55
6.7.2	Maintenance Schedule	6-56
6.7.3	Daily or Every Ten Hours	6-57
6.7.4	Weekly Maintenance or Every 50 Hours	6-58
6.7.5	Every 250 Running Hours	6-61
6.7.6	Every 1000 Running Hours	6-62
6.8	When Necessary, Service and Adjust the Following	6-64
6.8.1	How to Eliminate Air from the Fuel System	6-66
7.	Hydraulic System	7-1
7.1	Working Hydraulic System	7-1
7.2	Hydrostatic System	7-1
7.3	Hydraulic Tank	7-1
7.3.1	Filling with Hydraulic Fluid	7-2
7.3.2	Draining the Hydraulic Fluid	7-2

7.4	Vacuum Pump	7-3
7.5	Bleeding air from the Hydraulic System	7-3
7.5.1	How to Eliminate Air from the Drive Hydraulic System	7-4
7.5.2	How to Eliminate Air from the Working Hydraulics	7-5
7.5.3	Bleeding the Brakes	7-7
7.6	How to Check and Adjust the Brake System	7-9
7.6.1	Checking the Brakes	7-9
7.6.2	Mechanical Adjustment of Brakes	7-9
7.6.3	Brake Charging Pressure	7-11
7.6.4	How to Adjust the Pressure Reducing Valve of the Parking Brake	7-12
7.6.5	Checking the Service Brake	7-13
7.6.6	Checking the Drive Brake (Brake Pedal)	7-13
8.	Electrical System	8-1
8.1	Main Switch	8-1
8.2	Batteries	8-2
8.3	Welding	8-3
8.4	Fuses on the Left-Hand Side in the Engine Compartment	8-4
8.5	Instrument Box Fuses	8-5
8.6	Instrument Box Relays	8-6
8.7	Other relays	8-6
8.8	Machine Sensors	8-7
8.8.1	Engine Speed Sensor	8-7
8.8.2	Coolant Temperature Sensor	8-7
8.8.3	Engine Oil Pressure Sensor	8-7
8.8.4	The RPM Sensor of the Drive Hydrostatics Motor	8-8
8.8.5	Hydraulic Oil Level Sensor	8-8
8.8.6	Hydraulic Oil Temperature Sensor	8-9
8.8.7	Hydraulic Oil Return Filter Sensor	8-9
9.	Operating Power Transmission	9-1
9.1	High/Low Gear	9-2
9.2	Hydrostatic System	9-2
9.3	Control of Transmission	9-4
10.	Boom	10-1
10.1	A General Description of the Boom	10-1
10.2	Operating Safety Precautions	10-2

10.3	General Operating Instructions	10-3
10.4	Technical Specifications	10-5
10.4.1	Boom	10-5
10.4.2	Rotator and Grapple	10-5
11.	Equipment	11-1
11.1	Air Conditioner	11-1
11.1.1	Introduction	11-1
11.1.2	Main Parts of Air Conditioning System	11-2
11.1.3	Air Conditioner	11-5
11.1.4	Air Conditioner Maintenance Instructions	11-7
11.2	Operating Instructions for the Engine Heating Timer (Opt. Eq.)	11-11
11.2.1	General	11-12
11.2.2	Instructions for Use	11-13
11.3	Fire Extinguisher System *)	11-15
11.3.1	Control Unit	11-17
11.4	Hand-Held Fire Extinguishers	11-19
11.5	Preparedness for Radiotelephone	11-19
12.	Technical Specifications	12-1
13.	Troubleshooting	13-1
13.1	Engine Troubleshooting	13-2
13.1.1	Engine will not crank or cranks slowly	13-2
13.1.2	Engine cranks but will not start (Exhaust smoke present)	13-3
13.1.3	Engine cranks but will not start (No smoke from exhaust)	13-3
13.1.4	Engine starts but lacks power	13-3
13.1.5	Engine overheats	13-4
13.1.6	Low Oil Pressure	13-5
13.1.7	Oil pressure too high	13-5
13.1.8	Engine runs cold	13-5
13.2	Electrical System Troubleshooting	13-6
13.2.1	Complete electrical system not functioning	13-6
13.2.2	Batteries not being charged	13-6
13.3	Hydraulic System General Troubleshooting	13-7
13.3.1	Complete hydraulic system failure	13-7
13.3.2	Slow cylinder operation	13-7
13.3.3	Hydraulic fluid temperature too high	13-8

13.3.4	Hydraulic fluid foams	13-8
13.3.5	Hydraulic system noisy	13-8
13.4	Transmission Troubleshooting	13-9
13.4.1	High/low gear cannot be switched	13-9
13.4.2	Noisy high/low gear, differentials or bogie casings	13-9
13.4.3	Differentials cannot be engaged	13-9
13.5	Boom Troubleshooting	13-10
13.5.1	No response	13-10
13.5.2	Slow response	13-10
13.6	Driveline Troubleshooting	13-11
13.6.1	Causing machine vibration	13-11
13.7	Brake Hydraulics Troubleshooting	13-12
13.7.1	Parking brake does not engage when parking brake switch is ON	13-12
13.7.2	Parking brake does not release when parking brake switch is OFF	13-12
13.7.3	Service brake does not engage when parking brake is disengaged	13-12
13.7.4	Driving brake does not work (service brake works)	13-12
13.8	Heater/Air Conditioner Troubleshooting	13-13
13.8.1	No heat	13-13
13.8.2	Low heat	13-13
13.8.3	Window fogs up	13-13
13.8.4	No Cooling	13-14
13.8.5	Insufficient cooling	13-14
Index	Index-1

1. Introduction

This manual provides you with the instructions for the operation and maintenance of the **John Deere 1758** Forwarder and instructions for the operation and maintenance of the boom.

Please read the entire manual before you start operating the machine. The instructions given will assist you in becoming familiar with many features of the **John Deere 1758** Forwarder, showing you how to operate the machine and how to carry out periodic maintenance procedures and some basic adjustments.

However, we strongly advise you to contact the nearest repair shop authorized by John Deere when complicated maintenance tasks or repairs come up. Our service people have the experience and tools needed for the job.

1.1 General

We designed the **John Deere 1758** forwarder to carry cross-cut timber on its deck from the logging site to the roadside. The maximum payload is 17 000 kg (37 480 lbs) and the maximum log length 8 m (26 ft). Skidding long logs is only permitted with machines specially equipped for the purpose. The machine must not be used for other purposes.

We designed the **John Deere 1758** forwarder to operate under difficult off-road circumstances. Still it is important that you always adapt your driving speed and load to the surroundings. Use chains and tracks if necessary.

Take a good look at your forwarder always when having a short break or when maintaining the machine. It is worth bearing in mind that even a small failure, if left unattended, may soon result in major problems and a long downtime.

Do not pollute the environment. It is imperative that you do not allow oil to leak into the ground or water because it only takes one liter of mineral oil to contaminate one million liters of water. Should you see a leaky joint, fix it immediately.

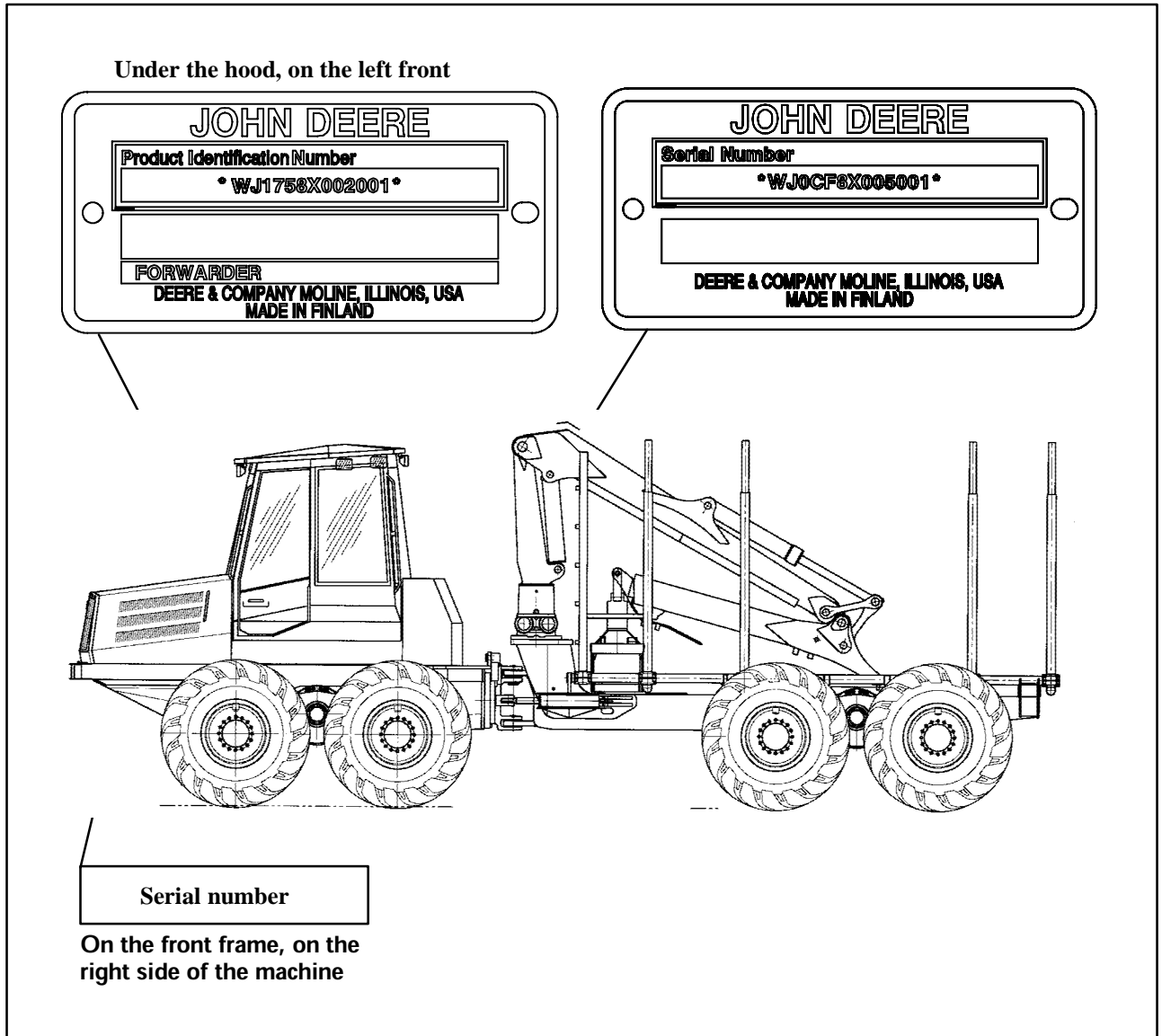
Remember fire prevention. Keep the machine clean at all times for this reduces the risk of overheating and chance of a fire starting..

**CALIFORNIA
Proposition 65 Warning**

Diesel engine exhaust and some of its constituents are known to the State of California to cause cancer, birth defects and other reproductive harm.

Battery terminals and posts contain lead or lead compounds which are known to the State of California to cause cancer and birth defects. Wash hands after handling batteries.

1.2 Where to Find Decals and Serial Number



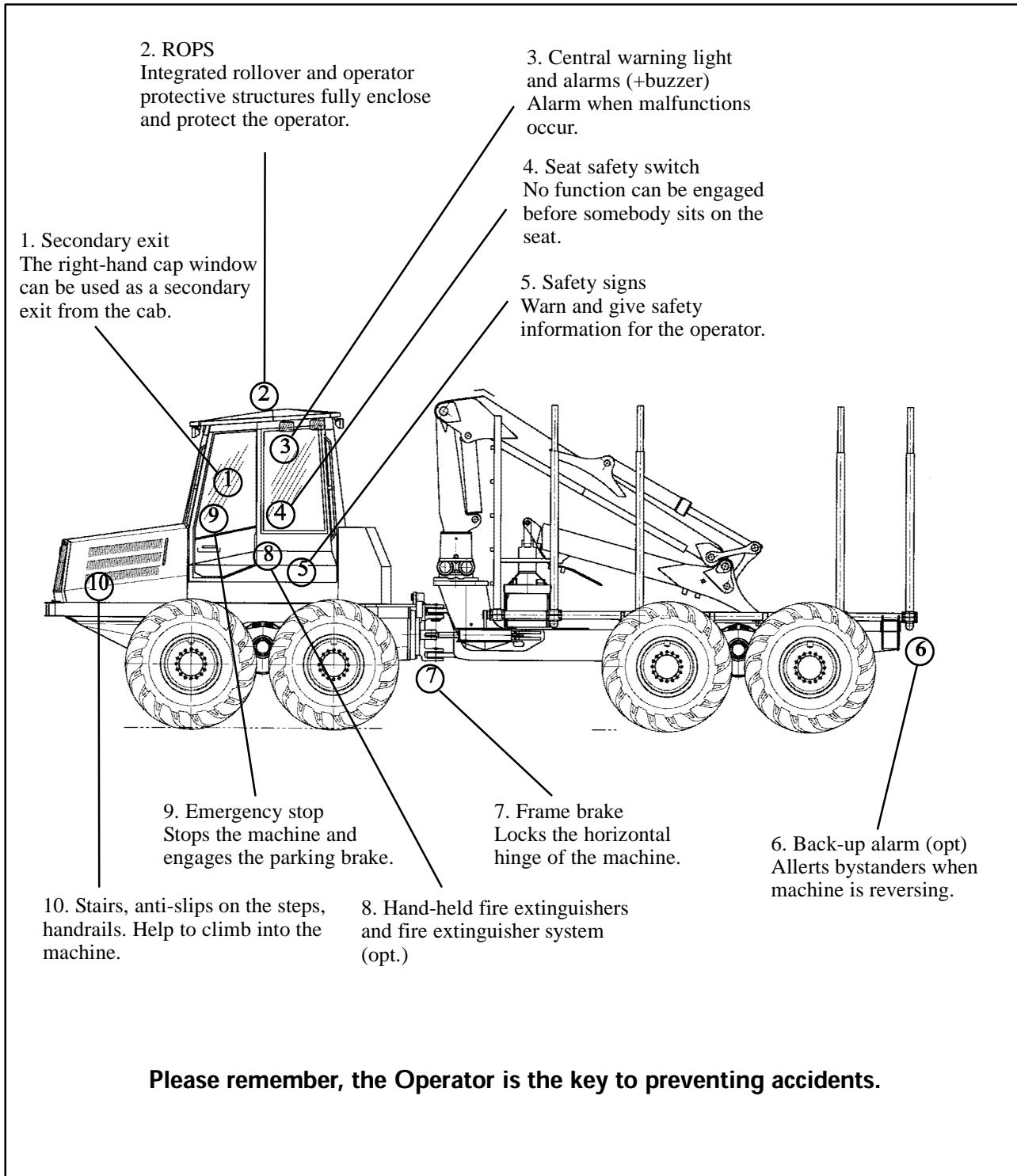
2. Warranty

2.1 Warranty Information

For warranty information, see the Warranty Certificate which you should have received from your dealer.

3. Safety Instructions

3.1 Safety Features



3.2 General

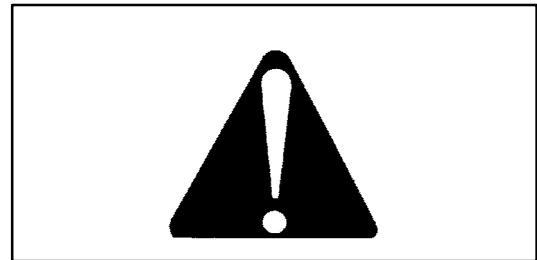
Local legislation takes precedence if any information or instructions in this manual does not conform.

The forwarder may only be used or repaired by personnel who have passed training that is approved by John Deere.

Ensure that you are conversant with the relevant laws on occupational safety with regard to forest machines and the safety instructions that apply to the operation of the John Deere forwarder. You can study the latter in this manual and on decals affixed to the machine.

3.3 Safety Symbol

This warning symbol is used throughout the operator's manual to call your attention to the fact that there is danger of personal injury in cases of carelessness or negligence in following the instructions.



3.3.1 Signal Words

A signal word - **DANGER**, **WARNING** or **CAUTION** - is used with the safety-alert symbol. **DANGER** identifies the most serious hazards.



DANGER and **WARNING** safety signs are located near specific hazards. General precautions are listed on **CAUTION** safety signs. **CAUTION** also calls attention to safety messages in this manual.



3.4 General Safety Rules

Carefully study all of the safety messages that are in this manual and on the machine.

More specific measures are illustrated with pictograms which may also be attached to the machine in locations pertinent to their respective message.

Keep safety signs in good condition. Repair or replace damaged signs.

The machine may only be used or repaired by personnel who have received training that is approved by John Deere.

Do not let an untrained person operate the machine.

Keep a first aid kit in an easily accessible location on the vehicle at all times. Check the first aid kit regularly and make sure you immediately replace all items you have used.

Learn to use first aid equipment and fire extinguishers. Also you should always know where help can be obtained if necessary.

Use the appropriate working clothes. Loose jackets and sleeves or long hair may get caught in the moving parts of the machine. Rings and other jewellery can get caught in the machinery or cause it to short circuit. Use protective goggles, gloves and safety shoes where required.

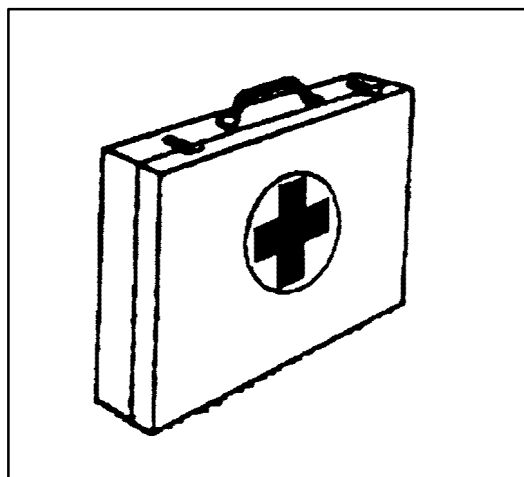
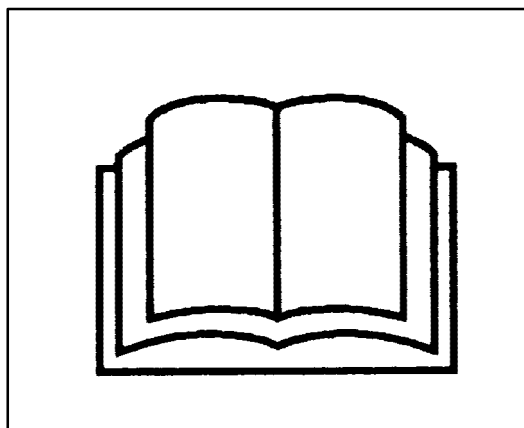
Carry no passengers. The vehicle is provided and approved with seating for the operator only.

The machine must not be operated by anyone under the influence of alcohol or drugs.

Avoid using the machine when you are tired or ill, as there is a greater risk of accident. Take sufficient breaks and observe local regulations on working hours.

Inspect the machine daily for signs of damage, unusual wear, fluid leaks, or faulty operation. Repair all defects.

Keep windows clean and the cab floor free from loose articles.



Do not operate the machine with the door open or any of the safety covers or protective devices removed.

Do not attach any parts on the cabin by welding nor drill any holes on it because it is a safety cabin. It is forbidden to modify the window fastening.

Adhere to the maintenance schedule in the operator's manual. This will contribute to a safe working environment.

Any use of equipment containing a radio transmitter (eg, telephone, communications radio) that has an antenna inside the cab is strictly **prohibited**. Such equipment must be permanently installed in a proper manner with an antenna on a suitable grounded plate outside the cab.



CAUTION

Never use a headset when there is thunder or lightning. Observe the danger of an outer antenna so that it does not come into contact with power lines.



CAUTION

The manufacturer shall assume no responsibility for any alterations made to the electrical system of the machine if the changes are not in compliance with service bulletins. There is a risk that the function of the safety systems of the machine is jeopardized.

3.4.1 Protective Structures

Cabin is safety tested according to international ROPS, FOPS and OPS standards.

It is important to keep the operator protective structure in place (doors, screens, windows, windshield, etc.) to minimize hazards from whipping or intruding objects.

The protection offered by ROPS, FOPS and OPS will be impaired if cabin

- is subjected to structural damage
- is involved in an overturn incident
- is in any way altered by welding, bending, drilling, or cutting

To maintain ROPS, FOPS and OPS protection, replace damaged cabin parts immediately. A damaged structure should be replaced, not re-used.



Suggest:

If the above button click is invalid.

Please download this document

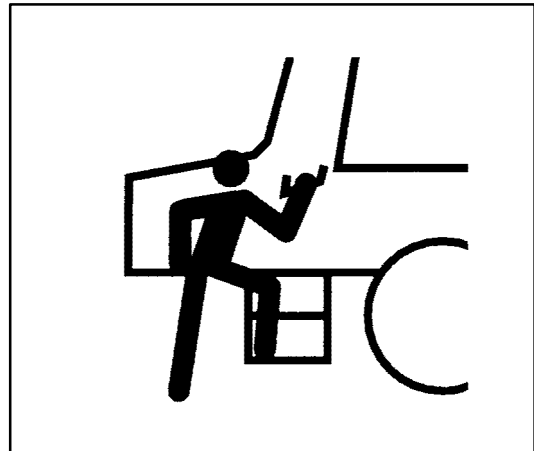
first, and then click the above link

to download the complete manual.

Thank you so much for reading

3.4.2 Boarding the Machine

Use the handrails and steps provided when mounting and dismounting from the machine. Do not climb onto the machine in any other fashion.



Keep floors, steps, and running boards clean and free of oil, ice, mud, and loose objects.



<https://www.ebooklibonline.com>

Hello dear friend!

Thank you very much for reading.

Enter the link into your browser.

The full manual is available for immediate download.

<https://www.ebooklibonline.com>