

425 and 445 Lawn and Garden Tractors

(Serial No. 040001 –)

OPERATOR'S MANUAL

**John Deere
Lawn & Grounds Care Division
OMM124534 H5**

North American Version
Litho in U.S.A
English

INTRODUCTION

THANK YOU for purchasing a John Deere product.

Read this manual and your attachment manuals thoroughly. Failure to do so could result in personal injury or equipment damage.



C WARNING: The Engine Exhaust from this product contains chemicals known to the State of California to cause cancer, birth defects or other reproductive harm.

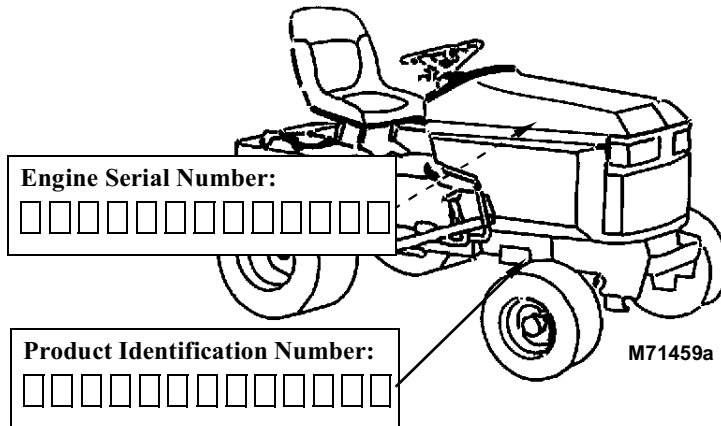
CALIFORNIA Proposition 65 Warning

This manual should be considered a permanent part of your machine and should remain with the machine when you sell it.

Measurements in this manual are metric units and their U.S. customary equivalents. RIGHT-HAND and LEFT-HAND sides are determined by facing in the direction the machine will travel when going forward. When you see a broken line arrow (- - - →) it indicates the part it is pointing to is hidden.

Record identification numbers below. Be sure to record all the numbers to help in tracing the machine if it is stolen. You also

Date of Purchase: _____	Dealership _____	Dealer Name: _____	Phone: _____
----------------------------	---------------------	-----------------------	-----------------



Product Identification Number:
□ □ □ □ □ □ □ □ □ □ □ □

TABLE OF CONTENTS

	Page
Safety Signs	
Safety-Alert Symbol.....	1
Machine Safety Labels	1
Controls	
Dash Controls.....	3
Foot/Platform Controls.....	4
Miscellaneous Controls.....	5
Operating	
SAFETY:	
Operate Safely.....	6
Park Safely	6
Rotating Blades Are Dangerous - Protect Children And Prevent Accidents	7
Avoid Tipping.....	8
Keep Riders Off	8
Wear Appropriate Clothing	9
Stay Clear Of Rotating Drivelines	9
Transport Safely	10
ADJUSTMENTS:	
Tilt Steering Wheel	10
Seat	11
Rear Wheel Spacing (Two Wheel Steer Models With 23 x 10.50-12 Tires).....	12
DRIVING:	
Using The Park Brake.....	13
Indicator Lights And Gauges	14
Starting The Engine.....	16
Stopping the Engine	18
Using Travel Controls	19
Using Cruise Control.....	20

<https://www.ebooklibonline.com>

Hello dear friend!

Thank you very much for reading.

Enter the link into your browser.

The full manual is available for immediate download.

<https://www.ebooklibonline.com>

TABLE OF CONTENTS

	Page
Operating (Continued)	
DRIVING (CONTINUED)	
Using Differential Lock	20
Using Hydraulic Control Levers.....	22
Using PTO (Power Take-Off).....	23
Using Mower Height Control	24
Mower Lift Arms	25
Using Free-Wheeling Lever	25
Daily Operating Checklist.....	26
Testing Safety Systems	26
Avoid Damage To Plastic And Painted Surfaces.....	30
Front Weights.....	30
Rear Weights	31
Installing Rear Wheel Weights (Two-Wheel Steer Tractors)	31
Installing Rear Wheel Weights (Two-Wheel Steer Tractors) (Continued).....	34
Installing Rear Wheel Weights (All-Wheel Steer Tractors)	35
Preparing Tractor For Installing Chains On Tires.....	36
Installing The Chains.....	36
Transporting Tractor.....	38
Lawn Care	
Mowing Tips	39
Trimming Tips	40
To Avoid Scalping	40
After Mowing	40
Bagging Tips	41
Bagging And Composting	41
Mulching Tips.....	42
Replacement Parts	
WE RECOMMEND JOHN DEERE quality parts and lubricants, available at your John Deere dealer.	

TABLE OF CONTENTS

	Page
Service Machine Safely	
Practice Safe Maintenance.....	45
Wear Appropriate Clothing	46
Stay Clear Of Rotating Drivelines	46
Handling Waste Product And Chemicals.....	46
Avoid High Pressure Fluids	47
Service Interval Chart	
Daily Service Required	48
Hourly Interval.....	48
Service Record	49
Service - Engine	
Avoid Fumes.....	51
Engine Oil	51
Changing Engine Oil And Filter	53
Cleaning Air Intake Screens	55
Checking Air Restriction Indicator (If So Equipped).....	55
Cleaning Radiator Screen And Fins	56
Cleaning/Replacing Air Cleaner Elements.....	56
Service Cooling System Safely.....	58
Engine Coolant	58
Checking Coolant Level.....	60
Draining Cooling System	61
Flushing Cooling System.....	62
Replacing Fuel Filter (425)	65
Relieving Fuel System Pressure (445)	65
Replacing Fuel Filter (445)	66
Tightening or Replacing Fan Belt	67
Adjusting Carburetor	68

TABLE OF CONTENTS

	Page
Service - Transaxle	
Anti-Chatter Transmission Oil	69
Checking Transaxle Oil Level	69
Changing Transaxle Oil And Filter	70
Service - Steering And Axle Components	
Grease	72
Lubricating Steering Cylinder Ball Joints.....	72
Lubricating Rear Steering Pivot (All Wheel Steer - 425).....	73
Lubricating Front Axle	73
Service - Electrical	
Cleaning Or Replacing Battery.....	74
Checking Battery Electrolyte Level	76
Charging The Battery	77
Charging Rates	79
Using Booster Battery	80
Cleaning And Gapping Spark Plugs.....	81
Replacing Fuses	82
Replacing Headlight Bulb.....	83
Replacing Taillight Bulb.....	83
Replacing Indicator Light Bulb	84
Service - Miscellaneous	
Checking Tire Pressure.....	86
Checking Tightness Of Wheel Bolts.....	87
Raising Hood.....	88
Removing Grille.....	88
Removing And Cleaning Side Panels	89
Refueling Machine	90
Filling Fuel Tank.....	91

TABLE OF CONTENTS

	Page
Troubleshooting	
Using Troubleshooting Chart.....	93
Engine.....	94
Tractor	96
Electrical	96
Storing Vehicle	
Steering	97
Storage Safety	98
Preparing Engine For Storage	98
Storing The Tractor.....	99
Removing The Vehicle From Storage.....	99
Assembly	
Fill Fuel Tank Safely	101
Fill Fuel Tank	102
Activate Battery.....	103
Install The Steering Wheel.....	105
Install Seat (425).....	106
Install Seat (445).....	106
Checking Tire Pressure	107
Specifications	
Engine.....	109
Fuel System.....	110
Electrical System	110
Capacities	110
Drive Train	111
Travel Speeds.....	111
Steering And Brakes.....	111
Dimensions	112
Tires.....	112
Recommended Lubricants.....	113

TABLE OF CONTENTS

	Page
Warranty Information	
Product Warranty	114
Tire Warranty	114
Limited Engine Warranty	114
Limited Battery Warranty.....	117
John Deere Service Literature Available	
Order Form.....	119

All information, illustrations and specifications in this manual are based on the latest information at the time of publication. The right is reserved to make changes at any time without notice.

COPYRIGHT© 1995
John Deere Horicon Works
All rights reserved
Previous Editions
COPYRIGHT© 1993, and 1992

SAFETY SIGNS

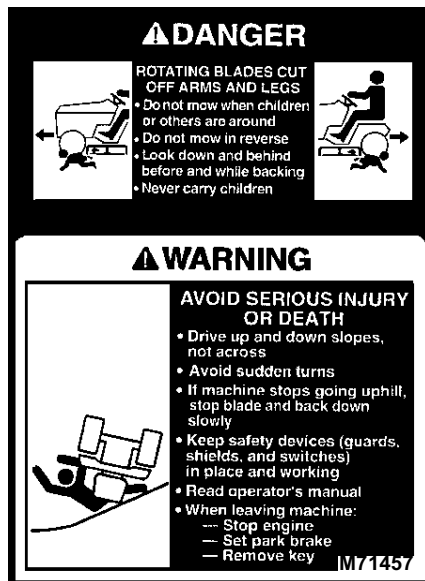
Safety-Alert Symbol

Read and recognize safety information. Be alert to the potential for personal injury when you see this safety-alert symbol.

On your machine safety labels, the words DANGER, WARNING, and CAUTION are used with this safety-alert symbol. DANGER identifies the most serious hazards. In this manual, the word CAUTION and this symbol call attention to safety messages.



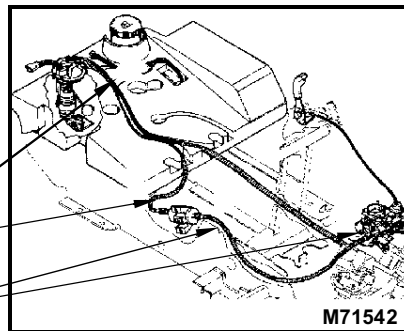
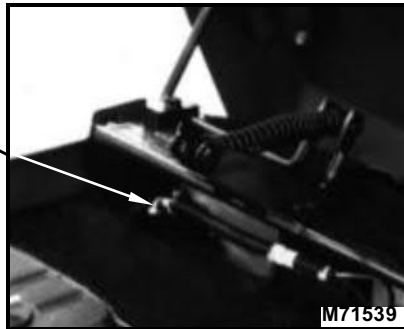
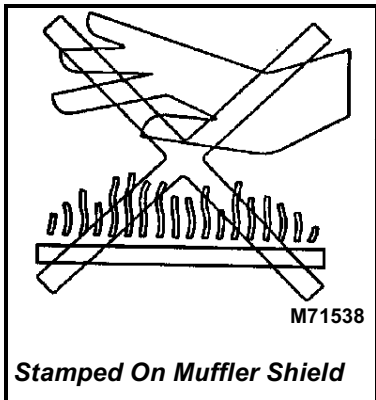
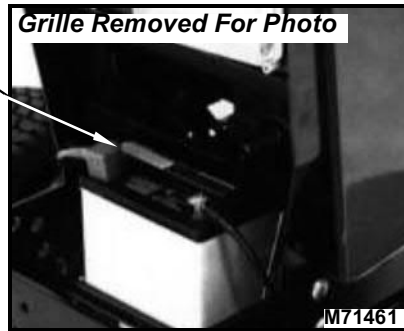
Machine Safety Labels



SAFETY SIGNS

<p>⚠ DANGER</p> <p>EXPLOSIVE GASES Cigarettes, flames or sparks could cause battery to explode. Always shield eyes and face from battery. Do not charge or use booster cables or adjust post connections without proper instruction and training. Keep vent caps tight and level.</p>	<p>POISON</p> <p>CAUSES SEVERE BURNS Contains sulfuric acid. Avoid contact with skin, eyes or clothing. In event of accident, flush with water and call a physician immediately. Keep out of reach of children.</p>
---	---

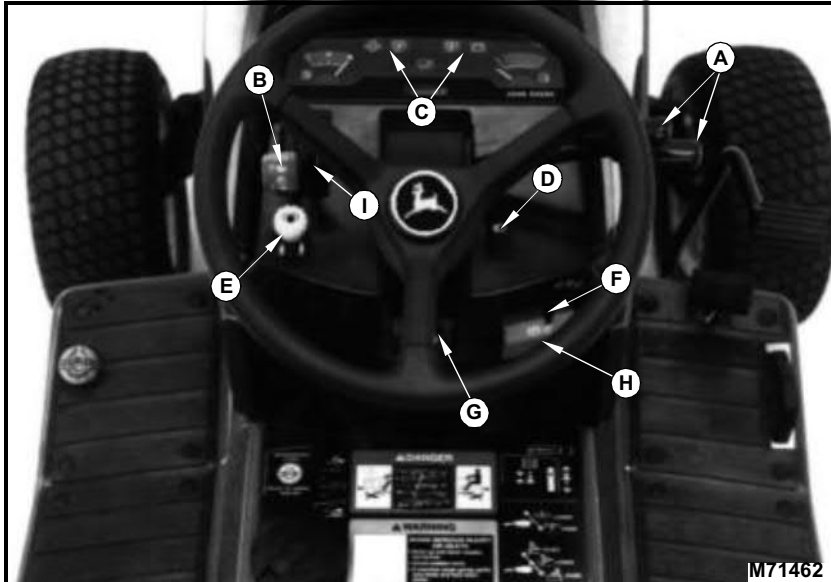
M74408



Model 445

CONTROLS

Dash Controls



Key	Description	Function
A	Hydraulic Control Levers	Raises and lowers attachments
B	Throttle Lever	Controls engine speed
C	Indicator Lights	
D	Light Switch	Push to engage lights
E	PTO Switch	Engages attachments
F	Key	Starts engine
G	Tilt Steering Wheel Button	Adjusts steering wheel
H	Park Brake Lever	Engages park brake
I	Choke Lever (425)	Chokes engine

CONTROLS

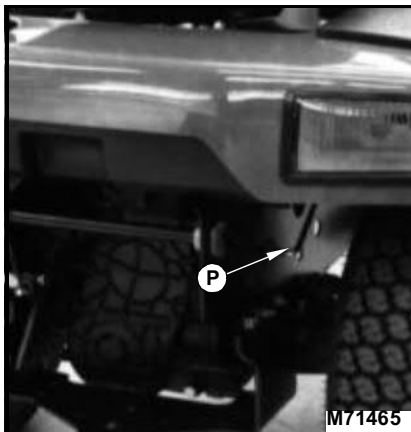
Foot/Platform Controls



Key	Description	Function
J	Differential Lock Pedal	Push for improved traction
K	Brake Pedal	Stops tractor
L	Reverse Travel Pedal	Backs tractor
M	Forward Travel Pedal	Controls tractor forward travel
N	Mower Height Indicator	
O	Mower Height Crank	Changes mower height stop

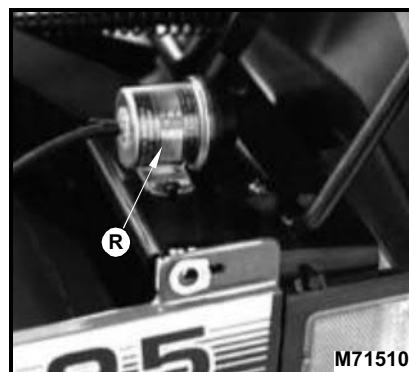
CONTROLS

Miscellaneous Controls



Key	Description	Function
P	Free-Wheeling Lever	Allows tractor to be moved without the engine running
Q	Cruise Control Lever	Engages cruise control
R	Air Restriction Indicator (Optional equipment)	Shows engine air intake restriction

This tractor can be equipped with an air restriction indicator. The indicator is designed to inform you when it is time to service the air filter elements. The indicator is numbered to measure air restriction. As the filter collects more dirt, the restriction increases, raising the numbered reading on the indicator.



IMPORTANT: Engine damage may occur if the air filter is not serviced properly. (See **Checking Air Restriction Indicator (Optional Equipment)** in the Service - Engine section.)

OPERATING

SAFETY



Operate Safely

- Check brake action before you operate. Adjust or service brakes as necessary.
- Clear work area of objects that might be thrown. Keep people and pets out of the work area. Stop machine if anyone enters the area.
- If you hit an object, stop the machine and inspect it. Make repairs before you operate. Keep machine and attachments properly maintained and in good working order. Keep all shields and guards in place.
- DO NOT leave machine unattended when it is running.
- Only operate during daylight or with good artificial light.
- Be careful of traffic when operating near or crossing roadways.
- DO NOT wear radio or music headphones while operating the machine. Safe operation requires your full attention.

Park Safely

- Stop machine on a level surface, not on a slope.
- Disengage PTO
- Lower attachments to the ground.
- Engage park brake.
- STOP engine.
- Remove key.
- Before you leave the operator's seat, wait for engine and all moving parts to STOP.



Suggest:

If the above button click is invalid.

Please download this document

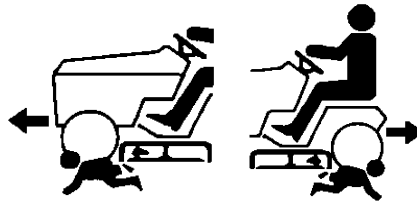
first, and then click the above link

to download the complete manual.

Thank you so much for reading

OPERATING

Rotating Blades Are Dangerous - Protect Children And Prevent Accidents



PROTECT CHILDREN:

- Never assume that children will remain where you last saw them. Children are attracted to mowing activity, stay alert to the presence of children.
- Keep children in the house when you are operating the machine.
- Turn machine off if a child enters the mowing area.
- Use extra care when you come to blind corners, shrubs, trees, or other objects that may block your vision.
- DO NOT let children or an untrained person operate the machine.
- DO NOT carry or let children ride on machine or any attachment. DO NOT tow children in a cart or trailer.

HELP PREVENT SERIOUS OR FATAL ACCIDENTS:

- Be alert at all times, drive forward carefully. People ESPECIALLY CHILDREN can move quickly into the mowing area before you know it.
- Back carefully. Shut off PTO and look behind the machine carefully, ESPECIALLY FOR CHILDREN, before you back up.
- DO NOT mow in reverse unless it is absolutely necessary.
- Shut off PTO when you are not mowing.
- DO NOT operate machine if you are under the influence of drugs or alcohol.

<https://www.ebooklibonline.com>

Hello dear friend!

Thank you very much for reading.

Enter the link into your browser.

The full manual is available for immediate download.

<https://www.ebooklibonline.com>