

**380**  
**Front Blade**  
**For 55 Series**  
**Tractors**

**John Deere Horicon Works**  
**OMM75890 Issue F1**  
**(This manual replaces OMM75890 D1.)**

LITHO IN U.S.A.  
**ENGLISH**

# Introduction

THANK YOU for purchasing a John Deere product.

READ THIS MANUAL carefully to learn how to operate and service your blade correctly. Failure to do so could result in personal injury or equipment damage.

THIS MANUAL SHOULD BE CONSIDERED a permanent part of your blade and should remain with the blade when you sell it.

MEASUREMENTS in this manual are U.S. customary units and their metric equivalents.

RIGHT-HAND AND LEFT-HAND sides are determined by facing in the direction of forward travel.

WRITE IDENTIFICATION NUMBERS in the Specifications section. Accurately record all the numbers to help in tracing the blade should it be stolen. Your dealer also needs these numbers when you order parts.

WARRANTY is provided as part of John Deere's support program for customers who operate and maintain their equipment as described in this manual. The warranty is explained on the warranty certificate which you should have received from your dealer.

This warranty provides you the assurance that John Deere will back its products where defects appear within the warranty period. In some circumstances, John Deere also provides field improvements, often without charge to the customer, even if the product is out of warranty. Should the equipment be abused, or modified to change its performance beyond the original factory specifications, the warranty will become void and field improvements may be denied.



M41733  
-UN-12MAR91

MX,IFC,75890 -19-16MAY91

# Contents

	Page
<b>Safety</b> .....	1
<b>Preparing Tractor</b> .....	5
<b>Installing Blade</b> .....	6
<b>Removing Blade</b> .....	9
<b>Operating Blade</b>	
Using Blade Safely .....	12
Operating Tips .....	12
Operating Blade .....	13
Adjusting Skid Shoes .....	13
Using Blade Lock Bolts .....	14
Releasing Blade From Tripped Position .....	14
Lubricating Blade .....	14
<b>Assembly</b> .....	15
<b>Troubleshooting</b> .....	27
<b>Storage</b> .....	28
<b>Specifications</b> .....	29

*All information, illustrations and specifications in this manual are based on the latest information available at the time of publication. The right is reserved to make changes at any time without notice.*

OMM75890 F1-19-16MAY91

COPYRIGHT© 1991  
DEERE & COMPANY  
Moline, Illinois  
All rights reserved  
A John Deere ILLUSTRATION™ Manual  
Previous Editions  
Copyright 1988, 1987 Deere & Company

**<https://www.ebooklibonline.com>**

Hello dear friend!

Thank you very much for reading.

Enter the link into your browser.

The full manual is available for immediate download.

**<https://www.ebooklibonline.com>**

# Safety

## RECOGNIZE SAFETY INFORMATION

This is the safety-alert symbol. When you see this symbol on your machine or in this manual, be alert to the potential for personal injury.

Follow recommended precautions and safe operating practices.



DX,ALERT -19-04JUN90

T81389 -UN-07DEC88

## UNDERSTAND SIGNAL WORDS

A signal word—DANGER, WARNING, or CAUTION—is used with the safety-alert symbol. DANGER identifies the most serious hazards.

DANGER or WARNING safety signs are located near specific hazards. General precautions are listed on CAUTION safety signs. CAUTION also calls attention to safety messages in this manual.



DX,SIGNAL -19-04JUN90

TS187 -19-30SEP88

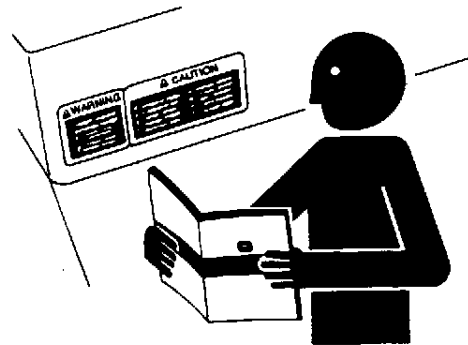
## FOLLOW SAFETY INSTRUCTIONS

Carefully read all safety messages in this manual and on your machine safety signs. Keep safety signs in good condition. Replace missing or damaged safety signs. Be sure new equipment components and repair parts include the current safety signs. Replacement safety signs are available from your John Deere dealer.

Learn how to operate the machine and how to use controls properly. Do not let anyone operate without instruction.

Keep your machine in proper working condition. Unauthorized modifications to the machine may impair the function and/or safety and affect machine life.

If you do not understand any part of this manual and need assistance, contact your John Deere dealer.



DX,READ -19-04JUN90

TS201 -UN-23AUG88

# P

## OPERATE BLADE SAFELY

Allow only operator on tractor. Keep riders off.

Avoid tipping:

- DO NOT use blade near edge of ditch or bank.
- Avoid holes, rocks or roots.
- Slow down before you make turns.
- Drive up and down—not across—slopes.
- Avoid parking on slopes.
- Install chains and correct rear weights on your tractor.
- Use safe tool to pry objects from tripped blade.

Use blade safely:

- STOP tractor before you adjust blade.
- Lower blade to ground before you work on blade.
- DO NOT use blade as a battering ram.
- DO NOT run tractor at high speed.

MX,SAGS,A -19-16MAY91

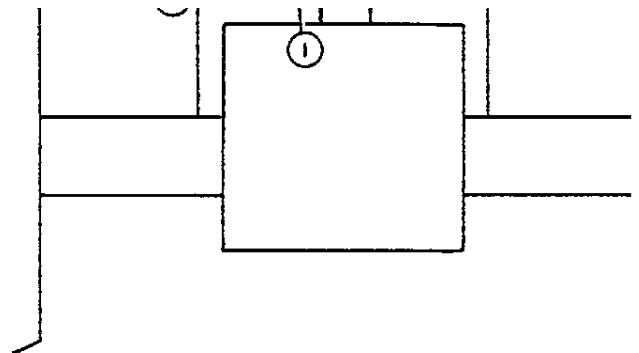
## AVOID INJURY FROM HITTING OBSTRUCTION

Raise blade before you drive between jobs.

Put lock bolts in STORAGE position, if possible. (See Operating Blade section.)

Protect children:

- Keep children and pets out of work area.
- DO NOT let children ride on tractor or blade.
- Before you back, look behind for children.
- Lower blade to ground when you are not using it.



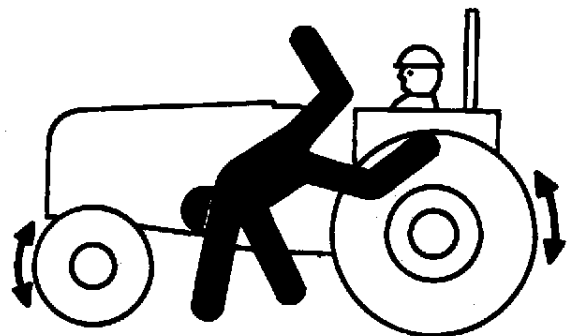
IM41364 -UN-30AUG88

MX,SAGS,B -19-16MAY91

## KEEP RIDERS OFF MACHINE

Only allow the operator on the machine. Keep riders off.

Riders on machine are subject to injury such as being struck by foreign objects and being thrown off of the machine. Riders also obstruct the operator's view resulting in the machine being operated in an unsafe manner.



T5290 -UN-23AUG88

DX,RIDER -19-04JUN90

# P

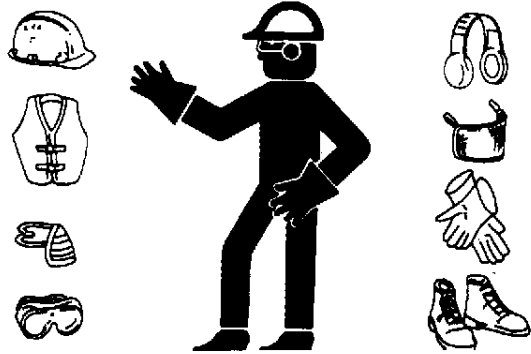
## WEAR PROTECTIVE CLOTHING

Wear close fitting clothing and safety equipment appropriate to the job.

Prolonged exposure to loud noise can cause impairment or loss of hearing.

Wear a suitable hearing protective device such as earmuffs or earplugs to protect against objectionable or uncomfortable loud noises.

Operating equipment safely requires the full attention of the operator. Do not wear radio or music headphones while operating machine.



DX,WEAR -19-10SEP90

TS206 -UN-23AUG88

## PRACTICE SAFE MAINTENANCE

Understand service procedure before doing work. Keep area clean and dry.

Never lubricate or service machine while it is moving. Keep hands, feet, and clothing from power-driven parts. Disengage all power and operate controls to relieve pressure. Lower equipment to the ground. Stop the engine. Remove the key. Allow machine to cool.

Securely support any machine elements that must be raised for service work.

Keep all parts in good condition and properly installed. Fix damage immediately. Replace worn or broken parts. Remove any buildup of grease, oil, or debris.

Disconnect battery ground cable (-) before making adjustments on electrical systems or welding on machine.



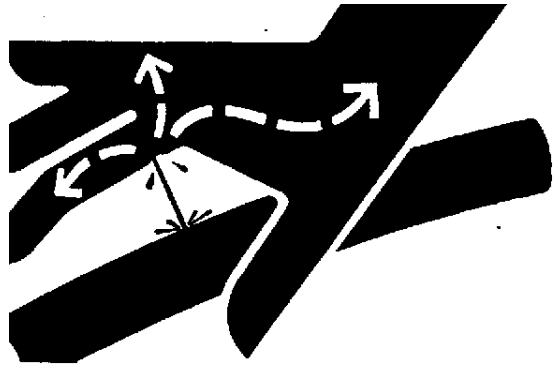
DX,SERV -19-04JUN90

TS218 -UN-23AUG88

# P

**N** **CAUTION:** Escaping fluid under pressure can penetrate the skin causing serious injury. Avoid the hazard by relieving pressure before disconnecting hydraulic or other lines. Tighten all connections before applying pressure. Search for leaks with a piece of cardboard. Protect hands and body from high pressure fluids.

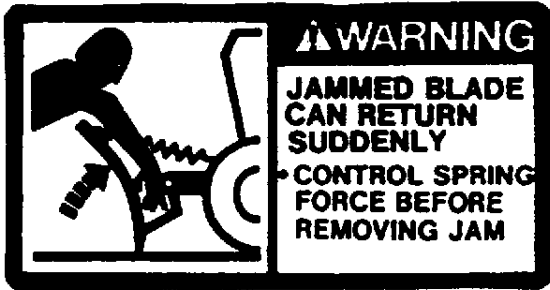
If an accident occurs, see a doctor immediately. Any fluid injected into the skin must be surgically removed within a few hours or gangrene may result. Doctors unfamiliar with this type of injury may call the Deere & Company Medical Department in Moline, Illinois, or other knowledgeable medical source.



X9811 -UN-23AUG88

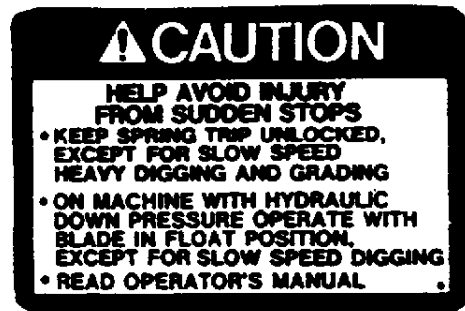
DX,FLUID2,NA -19-12JUN90

## READ SAFETY SIGNS



*On Back of Blade*

M41775 -19-19MAR91



*On Back of Blade*

M41774 -19-11MAR91

MX,SAGS,C -19-16MAY91

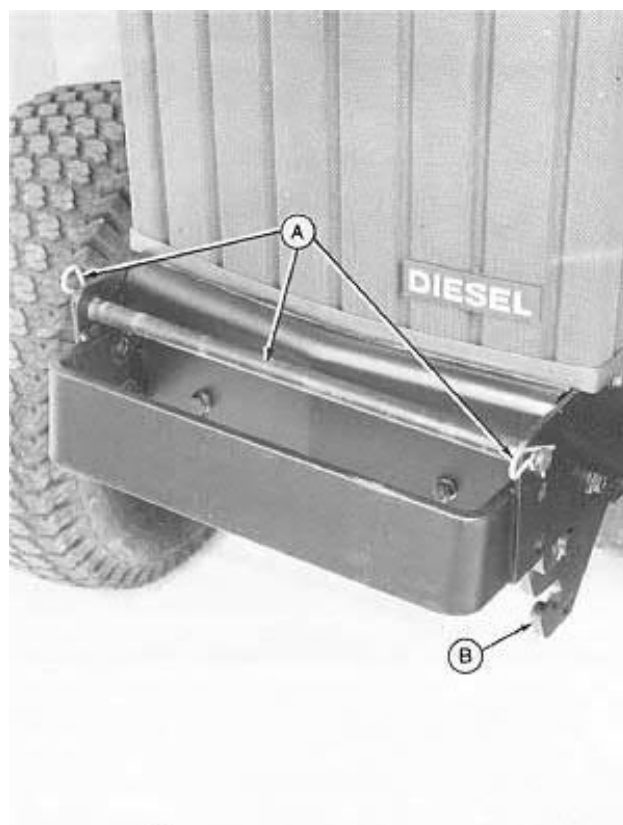
# Preparing Tractor

## PREPARING TRACTOR

1. Remove two spring locking pins and front weight rod (A). (Save parts for future use.)
2. If tractor is equipped with mower attaching brackets (B), remove brackets. (Save parts for future use.)

*NOTE: Tractor MUST BE equipped with OPTIONAL (SCV) Selective Control Valve. A kit with instructions is available from your John Deere dealer.*

- *Recommend tractor have MFWD (Mechanical Front Wheel Drive).*



MX,PTGS,A -19-16MAY91

IM41707 -UN-12JAN90



**Suggest:**

**If the above button click is invalid.**

**Please download this document**

**first, and then click the above link**

**to download the complete manual.**

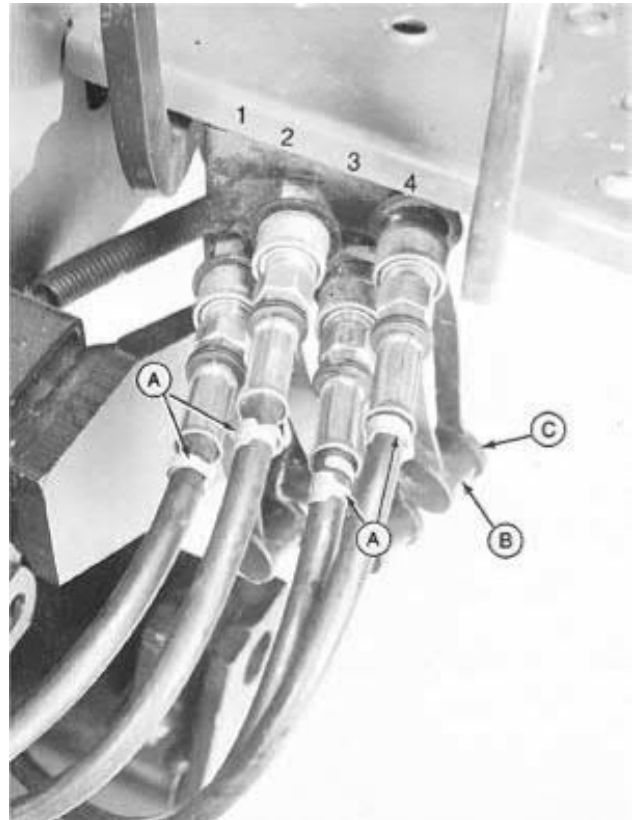
**Thank you so much for reading**

# Installing Blade

## INSTALLING BLADE

1. Put blade in front of tractor.
2. Start tractor engine and drive over blade frame. Be careful not to hit tractor axle.
3. STOP tractor engine.

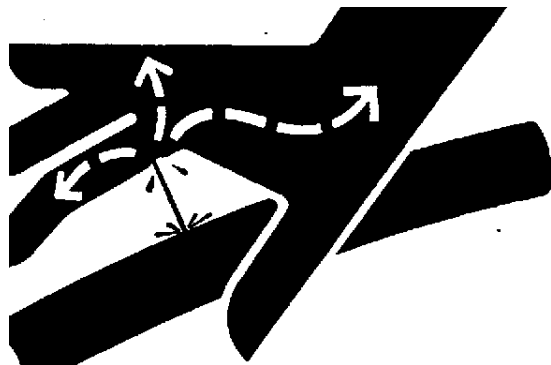
*NOTE: Match tags (A) attached to hydraulic hoses with numbered hydraulic outlets on tractor.*



IM41719 -UN-12JAN90

**N** **CAUTION:** Escaping fluid under pressure can penetrate the skin causing serious injury. Avoid the hazard by relieving pressure before disconnecting hydraulic or other lines. Tighten all connections before applying pressure. Search for leaks with a piece of cardboard. Protect hands and body from high pressure fluids.

If an accident occurs, see a doctor immediately. Any fluid injected into the skin must be surgically removed within a few hours or gangrene may result. Doctors unfamiliar with this type of injury may call the Deere & Company Medical Department in Moline, Illinois, or other knowledgeable medical source.



-UN-23AUG88

X9811

4. Connect hydraulic hoses to couplers as shown. Assemble dust caps (B) over dust plugs (C).

MX,INGS,A -19-16MAY91

**<https://www.ebooklibonline.com>**

Hello dear friend!

Thank you very much for reading.

Enter the link into your browser.

The full manual is available for immediate download.

**<https://www.ebooklibonline.com>**