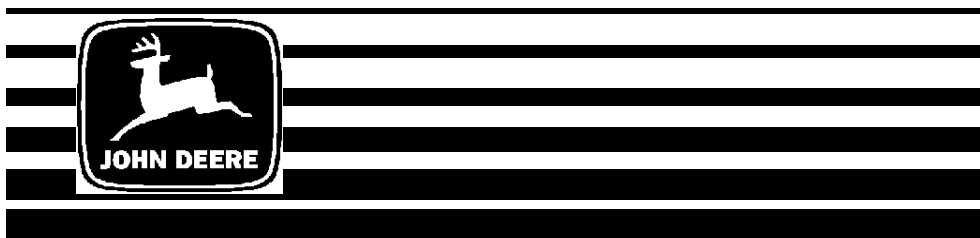


**14PZ and 14SZ
21-Inch
Walk-Behind
Rotary Mowers**
(Serial No. 100001 –)



**OPERATOR'S
MANUAL**

**John Deere
Lawn & Grounds Care Division
OMM121564 H5**

North American Version
Litho in U.S.A
English

INTRODUCTION

THANK YOU for purchasing a John Deere product.

Read this manual and your attachment manuals thoroughly. Failure to do so could result in personal injury or equipment damage.



C WARNING: The Engine Exhaust from this product contains chemicals known to the State of California to cause cancer, birth defects or other reproductive harm.

CALIFORNIA Proposition 65 Warning

This manual should be considered a permanent part of your machine and should remain with the machine when you sell it.

Measurements in this manual are metric units and their U.S. customary equivalents. RIGHT-HAND and LEFT-HAND sides are determined by facing in the direction the machine will travel when going forward. When you see a broken line arrow (- - - ➔) it indicates the part it is pointing to is hidden.

Record identification numbers below. Be sure to record all the numbers to help in tracing the machine if it is stolen. You also

Date of Purchase: _____	Dealer Name: _____	Phone: _____
-----------------------------------	------------------------------	------------------------

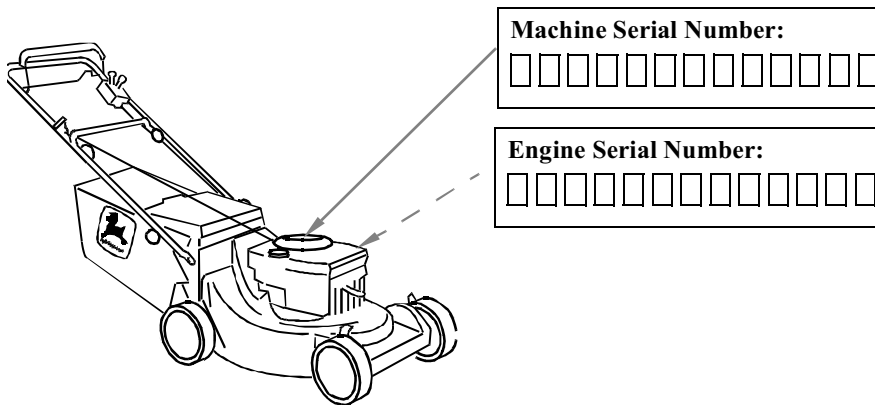


TABLE OF CONTENTS

	Page
Safety Signs	
Safety-Alert Symbol.....	1
Machine Safety Labels	1
Certification Label.....	3
Controls	
Handle Controls	4
Engine Controls	5
Mower Control	5
Operating	
SAFETY:	
Operate Safely.....	6
Rotating Blades Are Dangerous - Protect Children And Prevent Accidents	7
Wear Appropriate Clothing	7
ADJUSTMENTS:	
Adjust Cutting Height.....	8
Adjust Handle Height.....	9
Starting Engine	10
Forward Travel (14SZ).....	11
Travel Speeds (14SZ).....	12
Stopping Engine	12
Emergency Stopping	13
Using Discharge Chute (Optional).....	13
Using Grass Bag.....	14
Using Mulch Plug (Optional).....	14
Using Mulch Blade (Optional).....	15

<https://www.ebooklibonline.com>

Hello dear friend!

Thank you very much for reading.

Enter the link into your browser.

The full manual is available for immediate download.

<https://www.ebooklibonline.com>

TABLE OF CONTENTS

	Page
Lawn Care	
Mowing Tips	16
Trimming Tips	17
To Avoid Scalping	17
Bagging Tips	17
Bagging And Composting	18
Mulching Tips	19
After Mowing	20
Replacement Parts	
WE RECOMMEND JOHN DEERE quality parts and lubricants, available at your John Deere dealer.	21
Service Machine Safely	
Practice Safe Maintenance	22
Wear Appropriate Clothing	22
Avoid Injury From Contacting Blades	23
Handling Waste Products	23
Service	
Service Intervals	24
Service Record	24
Avoid Fumes	25
Checking Engine Oil Level	26
Changing Engine Oil	27
Cleaning Air Cleaner Element	28
Cleaning And Gapping Spark Plug	29
Cleaning Fins	29
Adjusting Carburetor	30
Adjusting Traction Cable (14SZ)	30
Adjusting Throttle Cable	31
Lubricate Rear Axle Bushings	32
Grease	32
Cleaning Belt Area (14SZ)	33

TABLE OF CONTENTS

	Page
Service (Continued)	
Cleaning Fuel Cap Vents.....	33
Check, Tighten, And Remove Blade.....	34
Sharpen Blade.....	34
Balance And Install Blade.....	35
Handle Fuel Safely	36
Filling Fuel Tank.....	37
Troubleshooting	
Using Troubleshooting Chart.....	39
Storing Machine	
Storing Mower Safely.....	42
Storing Mower.....	42
Remove Mower From Storage.....	43
Fold Handles.....	43
Unfold Handles	44
Assembly	
Unfold Handle	45
Install Starter Handle In Bracket.....	45
Add Engine Oil.....	46
Install Grass Bag	47
Test Mower Operation	47
Specifications	
Engine.....	48
Machine Specifications	48
Recommended Lubricants.....	49

TABLE OF CONTENTS

	Page
Warranty Information	
Product Warranty	50
Limited Engine Warranty.....	50
 John Deere Service Literature Available	
Order Form.....	55

All information, illustrations and specifications in this manual are based on the latest information at the time of publication. The right is reserved to make changes at any time without notice.

COPYRIGHT© 1995
John Deere Horicon Works
All rights reserved
Previous Editions
COPYRIGHT© 1994 and 1992

SAFETY SIGNS

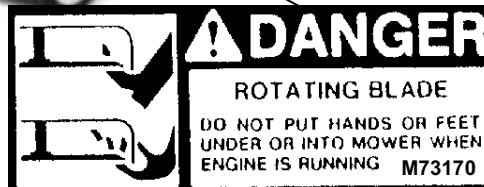
Safety-Alert Symbol

Read and recognize safety information. Be alert to the potential for personal injury when you see this safety-alert symbol.



On your machine safety labels, the words DANGER, WARNING, and CAUTION are used with this safety-alert symbol. DANGER identifies the most serious hazards. In this manual, the word CAUTION and this symbol call attention to safety messages.

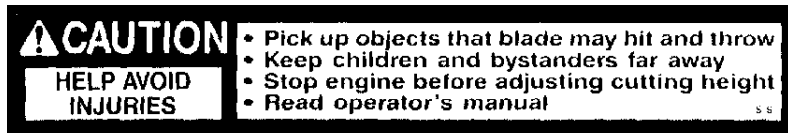
Machine Safety Labels



SAFETY SIGNS



SAFETY SIGNS



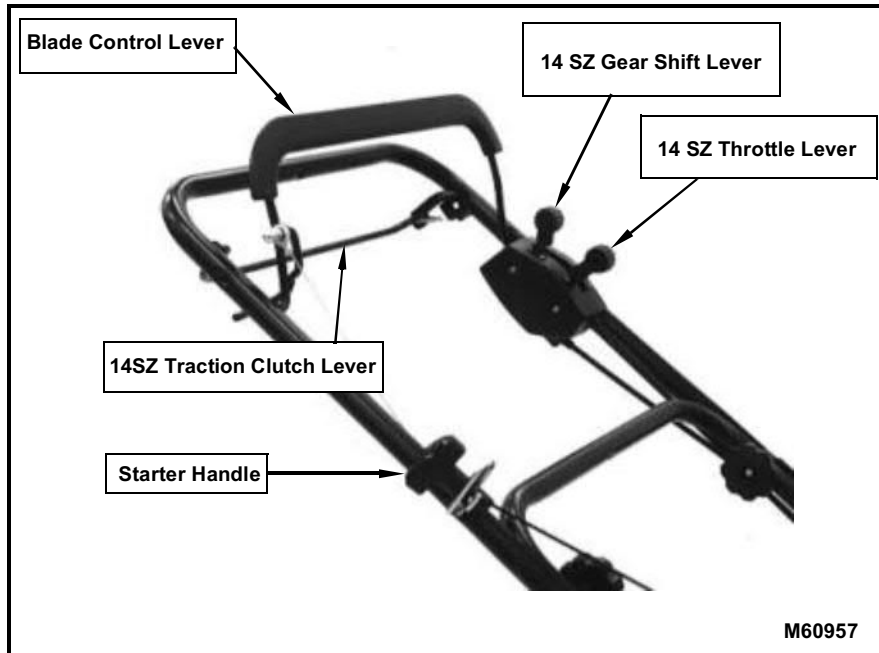
Certification Label

This OPEI label on your mower indicates that this model has been certified by an independent laboratory for compliance with American National Standard B-71.1-1990, "Safety Specifications" for Power Lawn Mowers, Lawn and Garden Tractors, and Lawn Tractors.



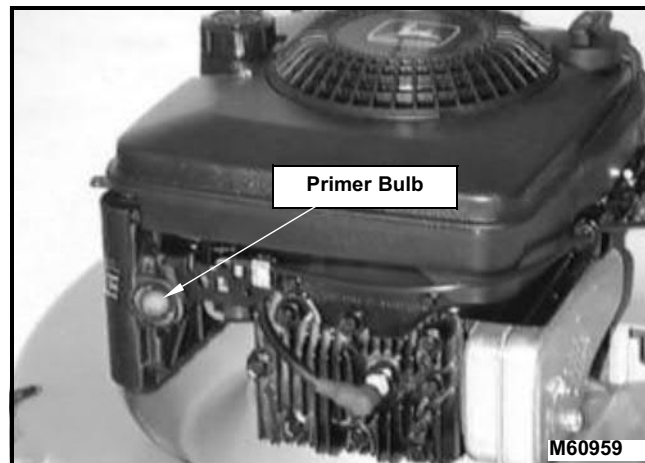
CONTROLS

Handle Controls



CONTROLS

Engine Controls



Mower Control



OPERATING

SAFETY

Operate Safely



- Inspect machine before you operate. Be sure hardware is tight. Repair or replace damaged, badly worn, or missing parts. Be sure proper guards, plates, grass catcher, or other safety protective devices are in good condition and fastened in place. Make any necessary adjustments before you operate.
- Clear work area of objects that might be thrown. Keep people and pets out of the work area. Stop machine if anyone enters the area.
- If you hit an object, stop the machine and inspect it. Make repairs before you operate. Keep machine properly maintained and in good working order. Keep all guards, plates, grass catcher, or other safety devices in place.
- DO NOT leave machine unattended when it is running.
- Only operate during daylight or with good artificial light.
- Be sure of footing. Be especially careful when you pull machine backwards with the engine running.
- Mow across a hill - not up and down. Be careful when you change direction on a slope. Do Not mow excessively steep slopes.
- DO NOT mow wet grass. Reduced traction could cause you to slip.
- Stop the blade when crossing gravel drives, walks, or roads.
- Keep a firm hold on the machine handle.
- DO NOT wear radio or music headphones while operating the machine. Safe operation requires your full attention.
- DO NOT operate mower if you are under the influence of drugs or alcohol.



Suggest:

If the above button click is invalid.

Please download this document

first, and then click the above link

to download the complete manual.

Thank you so much for reading

OPERATING

Rotating Blades Are Dangerous - Protect Children And Prevent Accidents



PROTECT CHILDREN:

- Never assume that children will remain where you last saw them. Children are attracted to mowing activity, stay alert to the presence of children.
- Keep children in the house when you are operating the machine.
- Turn machine off if a child enters the area.
- Use extra care when you come to blind corners, shrubs, trees, or other objects that may block your vision.
- DO NOT let children or an untrained person operate the machine.

HELP PREVENT SERIOUS OR FATAL ACCIDENTS:

- Be alert at all times, people ESPECIALLY CHILDREN can move quickly into the area before you know it.
- Shut off blades when you are not mowing.
- Keep hands, feet, and clothing away from rotating blades.

Wear Appropriate Clothing



- Wear close fitting clothing and safety equipment appropriate for the job.
- Do Not operate the equipment when barefoot or wearing open sandals. Always wear substantial footwear.
- Loud noise can cause impairment or loss of hearing, wear a suitable protective device such as earplugs.

<https://www.ebooklibonline.com>

Hello dear friend!

Thank you very much for reading.

Enter the link into your browser.

The full manual is available for immediate download.

<https://www.ebooklibonline.com>