

CROWN



Parts Manual

ESR4000 Series

CROWN

TABLE OF CONTENT

Table of Content

ITD – INTRODUCTION	PAGE	SERIAL NR. CUT	REV.
Allgemeines	7		

SECTION 1 – COVERS	PAGE	SERIAL NR. CUT	REV.
Covers	12,14,16		Rev.1 10/02
Reach Carriage	18,20		Rev.1 10/02
Load Wheel	22		
Battery Latch	24		Rev.1 10/02
Battery Reach Out	26,28		
Seat & Pan	30		Rev.1 10/02
Seat	32		
Rear Mirror	34		
Guide Wheels	36		

SECTION 2 – HYDRAULIC PART	PAGE	SERIAL NR. CUT	REV.
Tube-/Hose Layout	40		Rev.1 10/02
Hydraulic Tank	42		Rev.2 10/02
Hydraulic TT Mast	44,46		Rev.1 10/02
Valve Block	48,50		Rev.1 10/02
Reach Manifold	52		
Hydraulic Motor	54		
Pump	56		
Pump Motor and Pump	58		Rev.1 10/02
Pump Motor	60		
Fan	62		

SECTION 3 – DRIVE UNIT	PAGE	SERIAL NR. CUT	REV.
Drive Unit	66,68		Rev.1 10/02
Turntable	70		
Gearbox	72		Rev.1 10/02
Drive Motor	74		
Fan	76		Rev.1 10/02

SECTION 4 – ELECTRICAL	PAGE	SERIAL NR. CUT	REV.
Electrical Compartment	80,82,84		Rev.1 10/02
Contactors	86		
Mast Wiring	88,90		Rev.1 10/02
Switch HGTS Lift Speed Reduction	92		Rev.1 10/02
Height Encoder	94,96		Rev.1 10/02
Joystick and Emergency Disconnect Switch	98		Rev.1 10/02
Direction Switch/Horn Button	100		Rev.1 10/02
Floorplate	102		Rev.1 10/02
Accelerator	104		Rev.1 10/02
Dead Man Pedal	106		Rev.1 10/02
DC/DC Converter	108		
Dash Panel	110		Rev.1 10/02
Display Module	112		Rev.1 10/02
Steer Indicator	114		
Flashing Beacon	116		
Working Light	118,120		
Reverse Alarm	122		

<https://www.ebooklibonline.com>

Hello dear friend!

Thank you very much for reading.

Enter the link into your browser.

The full manual is available for immediate download.

<https://www.ebooklibonline.com>

Horn	124	Rev.1 10/02
Cooling System	126	

SECTION5 – BRAKE SYSTEM	PAGE	SERIAL NR. CUT	REV.
Brake Circuit	130		Rev.1 10/02
Foot Brake	132		
Drive Motor Brake	134		
Load Wheel Brake	136		
Brake Cylinder	138		Rev.1 10/02

SECTION 6 – STEERING	PAGE	SERIAL NR. CUT	REV.
Steering Column	142,144,146		Rev.1 10/02

SECTION 7 – MAST-/LIFT STRUCTURE	PAGE	SERIAL NR. CUT	REV.
TT Mast 1.4t/1.6t	150,152		Rev.1 10/02
TT Mast 2.0t	154,156		Rev.1 10/02
Lift Chain TT Mast	158,160		Rev.1 10/02
Tilt/Sideshift	162,164,166		Rev.1 10/02
Tilt/Sideshift-Hydraulic	168,170,172		Rev.2 10/02
Lift Buffer	174		Rev.1 10/02
Fork	176		Rev.1 10/02
Load Backrest	178		
Yoke	180		Rev.1 10/02

SECTION 8 – CYLINDER	PAGE	SERIAL NR. CUT	REV.
Lift Cylinder 1.4t/1.6t	184		
Lift Cylinder 2.0t	186		Rev.1 10/02
Free Lift Cylinder 1.4t/1.6t	188		Rev.1 10/02
Free Lift Cylinder 2.0t	190		Rev.1 10/02
Cylinder Reach	192		Rev.1 10/02

SECTION10 – MISCELLANEOUS SERVICE INF.	PAGE	SERIAL NR. CUT	REV.
Labels and Decals	196		

CROWN

INTRODUCTION

Important customer information

To ensure the safety of the truck, you, the customer, must only carry out maintenance and repairs as stipulated in the operator manual.

Any additional work must be performed by Crown authorised service technicians. Authorised service technicians have the required expertise and up-to-date service information.

If you wish to have your own technicians trained, please contact Crown for relevant training courses.

Subsequent Attachments and Modifications made to the Truck

DANGER!



Any proposed modification which would alter the original condition of the truck when delivered, must first be assessed and approved in writing by Crown Gabelstapler GmbH.

- *The net weight and position of attachments may considerably affect the capacity and other truck characteristics.*
- *Changing the electrical system or adding electrically operated components may result in operating faults.*

Modifications which have not been assessed may result in fatal accidents!

Ordering Spare Parts

Spare parts can be ordered by quoting:

- The truck specification number
- The truck model number
- The truck serial number

This information can be found on the truck's data plate. Only if this information is provided can the order be processed quickly, correctly and reliably.

Please refer to the Technical Specifications Sheet for the utilisable loads, technical data and dimensions for this series. Brochures can be obtained from your CROWN dealer or from the following address:

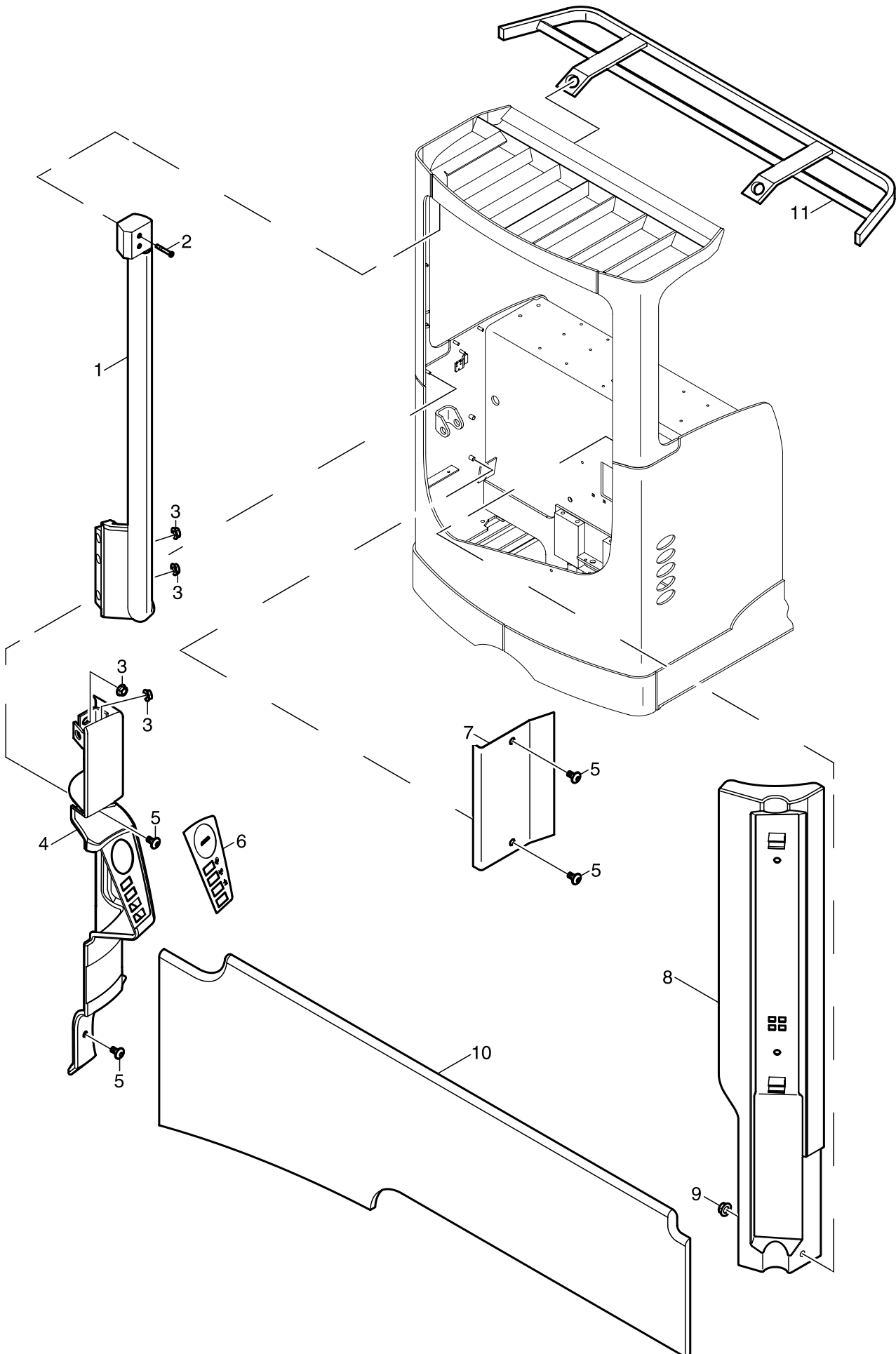
CROWN Gabelstapler GmbH
Moosacher Str. 52
80809 Munich
GERMANY
Tel.: +49 (0)89 / 93 002 -0
Fax: +49 (0)89 / 93 002 -175 oder 133

CROWN

PARTS

CROWN

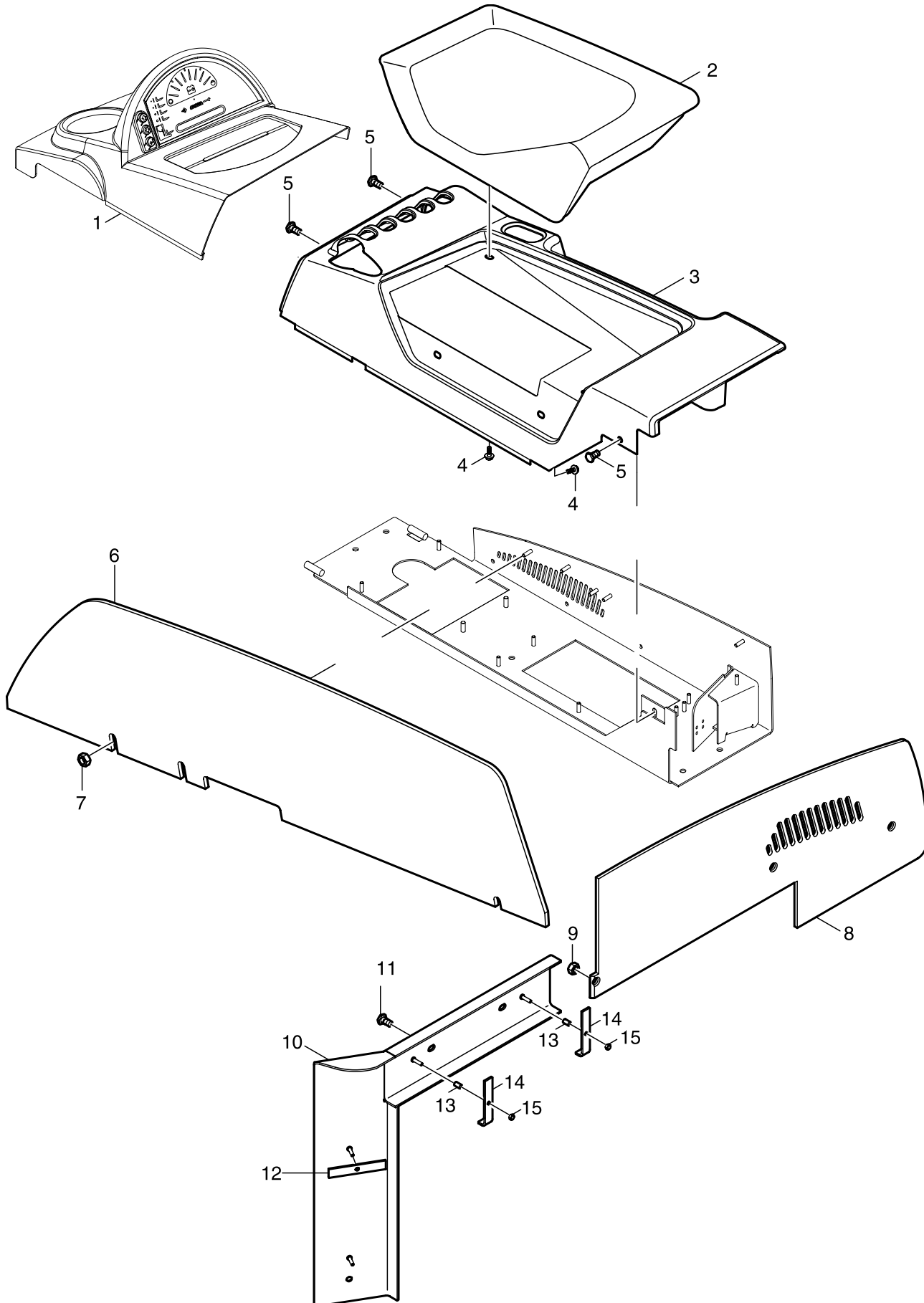
SECTION 1



M1576

INDEX	PART NUMBER	PART NAME	NUMBER REQUIRED
1	791764-003	Grab Handle	1
2	050067-023	Screw	1
3	050068-003	Nut	4
4	806686	Corner Cover	1
5	050071-035	Screw	4
	807053-002	Clip	4
6	807089	Display Overlay	1
7	807459	Hose Cover	1
8	807352	Headrest Pad	1
	050004-020	Screw	4
9	050068-004	Nut	1
10	806931	Leg Pad	1
	053050-012	Adhesive Tape	AR
11	796328	Overhead Guard	1
	050067-053	Screw	2
	050068-006	Nut	2

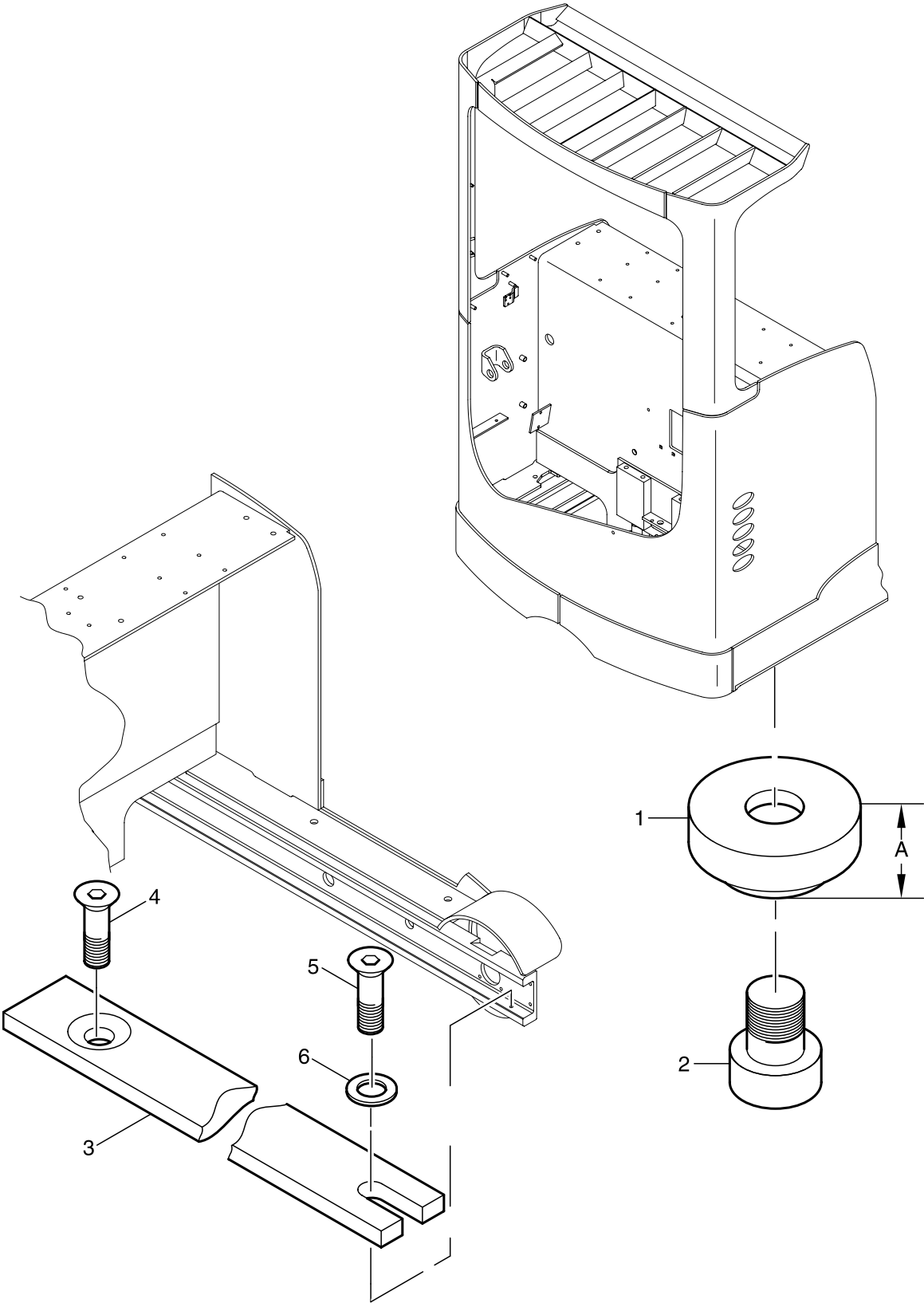
Always Specify Model & Serial Number



M1575

INDEX	PART NUMBER	PART NAME	NUMBER REQUIRED
1		Instrumentation (see Section 4.9)	1
2*	806689	Armrest Pad	1
3*	807098	Armrest Moulding	1
	796489	Armrest Moulding (6th Function Valve)	1
4*	050067-012	Screw	5
5	050071-035	Screw	3
	050009-020	Washer	2
6	806973	Screen	1
7	050068-003	Nut	3
8	806859	Plate	1
	796023	Plate (Drive in Racking)	1
9	050008-030	Nut	3
	807053-002	Insert	3
10	806499	Cover	1
11	050071-035	Screw	3
12	807765	Clamp	2
13	052068-002	Spacer	4
14	807764	Clamp	2
15	050008-008	Nut	3
*	806929	Armrest Assembly (inclusive 2-4, without 796489)	1

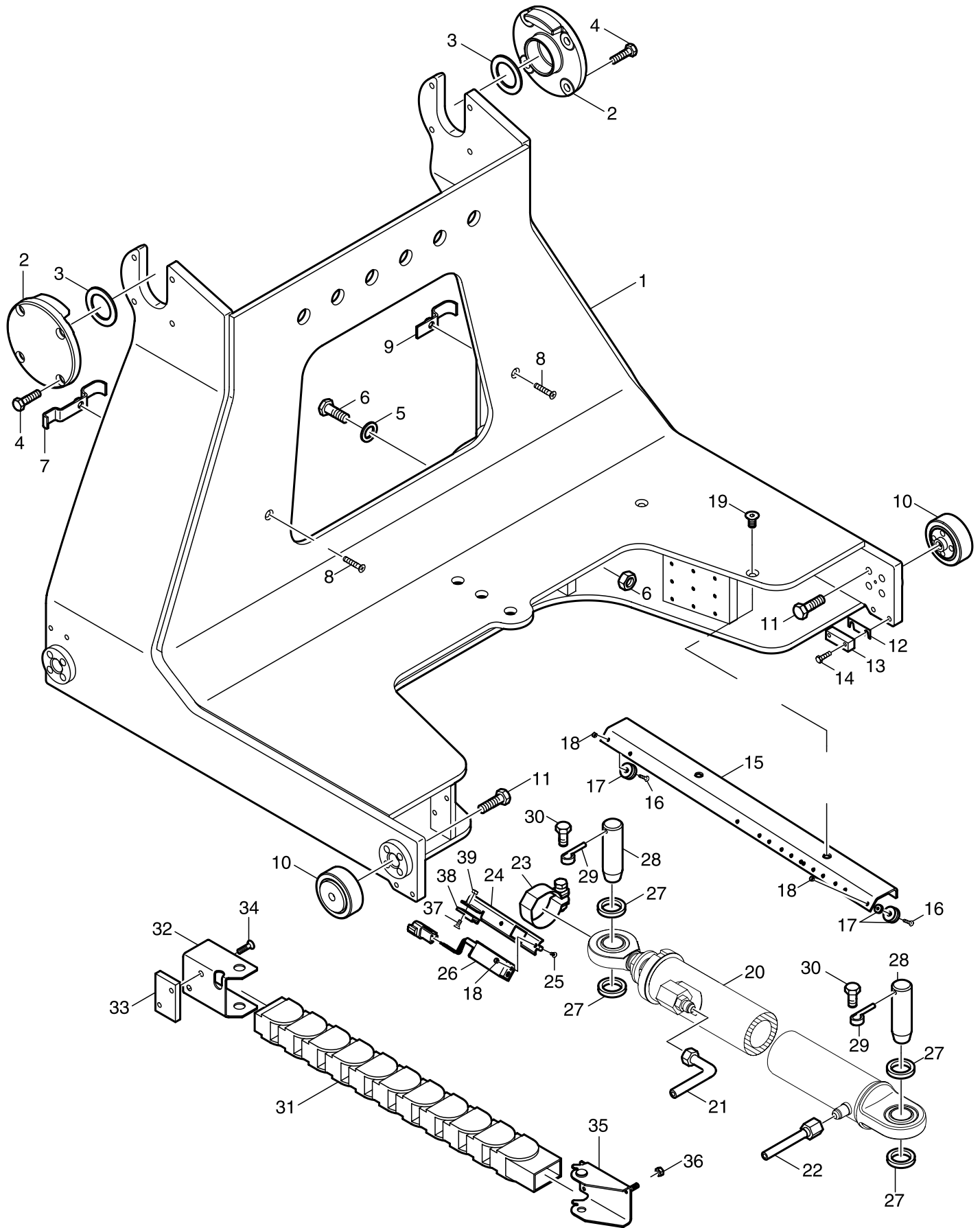
Always Specify Model & Serial Number



MP-2140-020

INDEX	PART NUMBER	PART NAME	NUMBER REQUIRED
1	790797-001	Block, Skid (A = 33mm)	2
	790797-002	Block, Skid (A = 26mm)	2
2	790798	Screw	2
3	810637-001	Wear Strips (1.4t/1285mm Leg Width/Load Wheel Ø 285mm)	2
	810637-002	Wear Strips (1.6t & 2.0t/1285mm Leg Width/Load Wheel Ø 285mm)	2
	810637-003	Wear Strips (1.6t & 2.0t/1285mm Leg Width/Load Wheel Ø 330mm)	2
	810637-004	Wear Strips (1.4t/1425&1575mm Leg Width/Load Wheel Ø 285mm)	2
	810637-005	Wear Strips (1.6t & 2.0t/1425&1575mm Leg Width/Load Wheel Ø 285)	2
	810637-006	Wear Strips (1.6t & 2.0t/1425&1575mm Leg Width/Load Wheel Ø 330)	2
4	050003-043	Screw	2
5	050005-068	Screw	2
6	050009-026	Washer	2

Always Specify Model & Serial Number



M1496

INDEX	PART NUMBER	PART NAME	NUMBER REQUIRED
1	806409	Reach Carriage (1285mm Leg Width)	1
	807413	Reach Carriage (1425mm Leg Width)	1
	807414	Reach Carriage (1575mm Leg Width)	1
2	806886	Plate	2
3	060030-085	Shim	10
	810203	Shim	2
4	050005-075	Screw	8
5	807323	Shim	8
	807407	Washer	2
6	050067-056	Screw	2
	050068-007	Nut	2
7	807525	Clamp	1
8	050003-035	Screw	2
9	807522	Clamp	1
10	791483-001	Roller (Ø 93,6mm)	4
	791483-002	Roller (Ø 93,9mm)	4
	790332	Grease Nipple	4
11	060019-023	Screw	16
12	810211-001	Shim (0,5mm)	AR
	810211-002	Shim (2,0mm)	AR
13	806408	Skid Bar (16mm)	4
	810245	Skid Bar (19mm)	4
14	050067-025	Screw	8
15*	796405	Bracket	1
16*	050003-018	Screw	2
17*	790350	Magnet	2
	050009-003	Washer	5
18*	050008-001	Nut	4
19*	050003-043	Screw	2
20		Cylinder Reach (see Section. 8.5)	1
21	806467-009	Hose	1
22	806467-012	Hose	1
23*	807486	Clamp	1
24*	807312	Bracket	1
25*	050003-017	Screw	2
26*	807487-001	Proximity Switch Assembly	1
	808122	Cable Assembly (RES)	1
	792880-002	Socket Housing	1
	792882	Socket Insert	2
	793090-002	Anti-Backout	1
27	806429	Washer	4
28	806427	Pin	2
29	792973	Pin Split	2
30	050006-026	Screw	2
31	790375	Drag Link	1
32	791476-001	Drag Link Mounting Bracket	1
33	806779	Plate	1
34	050003-060	Screw (1285mm Leg Width)	2
	050003-035	Screw (1425/1575mm Leg Width)	2
35	790592	Drag Link Mounting Bracket	1
36	050068-003	Nut	2

Always Specify Model & Serial Number



Suggest:

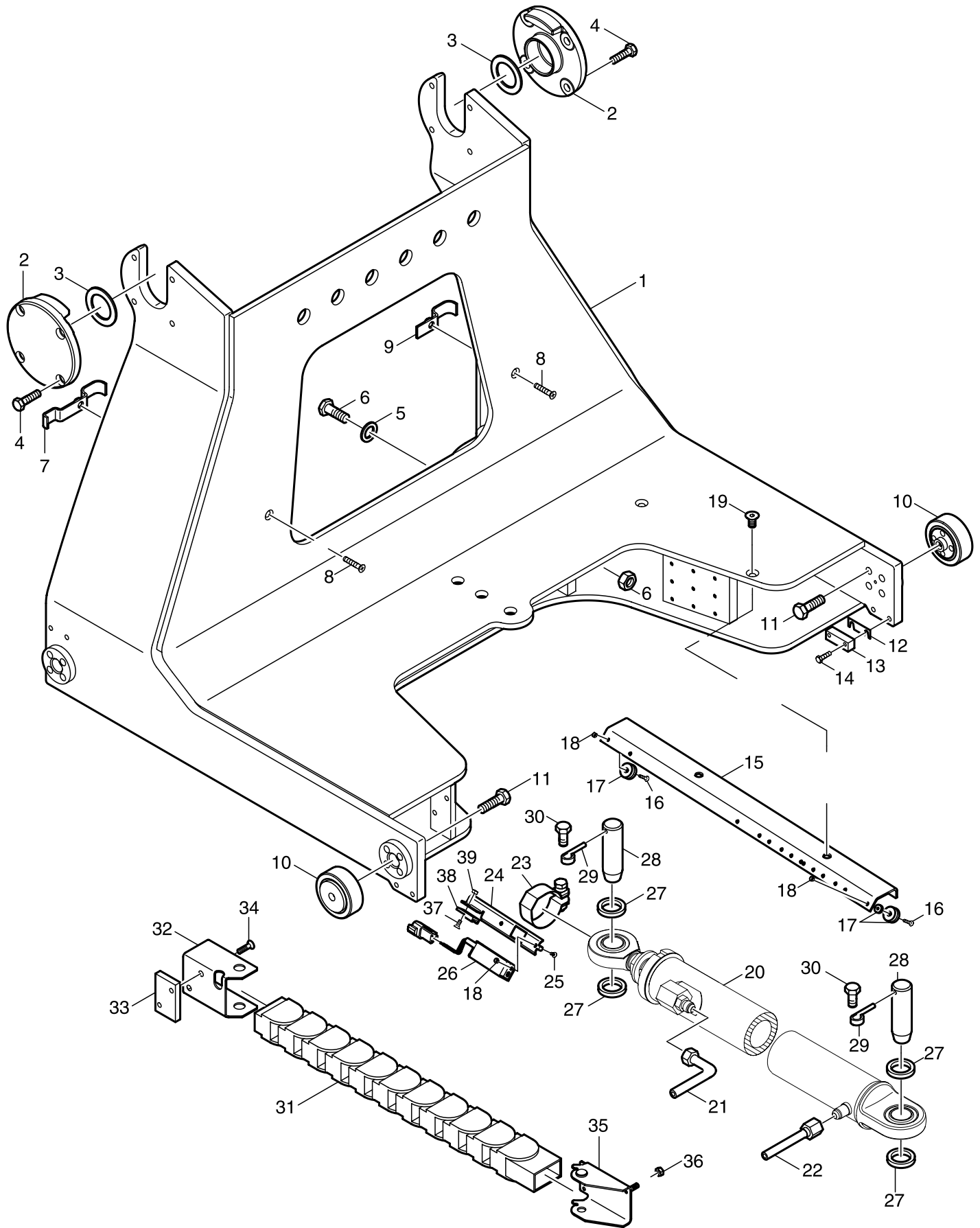
If the above button click is invalid.

Please download this document

first, and then click the above link

to download the complete manual.

Thank you so much for reading



M1496

<https://www.ebooklibonline.com>

Hello dear friend!

Thank you very much for reading.

Enter the link into your browser.

The full manual is available for immediate download.

<https://www.ebooklibonline.com>