

TABLE OF CONTENTS

4490 AND 4690 TRACTORS

SERIES	SECTION	DESCRIPTION	FORM NUMBER
10		GENERAL	
	1210	General Specifications - 4490 Tractors	8-21460
	1211	General Specifications - 4690 Tractors	8-21470
	1215	Lubrication - 4490 Tractors	8-21481
	1216	Lubrication - 4690 Tractors	8-21491
	1220	Engine Specifications	8-20841
	1230	Fuel System Specifications	8-21520
	1250	Steering System Specifications	8-21530
	1260	Power Train Specifications	8-21540
	1270	Brake System Specifications	8-21550
	1280	Hydraulic System Specifications	8-21560
20		ENGINES	
	2110	Engine, Front Axle and Transmission Removal Using Splitting Set	8-23071
	2201	Troubleshooting - Engine	8-20111
	2202	Engine Tune-Up	8-21570
	2210	Engine Removal	8-21580
	2215	Cylinder Head, Valve Train and Camshaft	8-21590
	2225	Cylinder Block, Sleeves, Pistons and Rods	8-21600
	2235	Crankshaft Main Bearings, Flywheel and Oil Seals	8-21610
	2245	Lubrication System - Oil Pump, Oil Pan and Heat Exchanger	8-21620
	2255	Cooling System	8-21631
	2265	Turbocharger - T04B	8-21640
	2565	Turbocharger Failure Analysis	9-78235
	2275	Air Induction System	8-21650
	2290	Reconditioning Engine Cylinder Block	8-21170
30		FUEL SYSTEM	
	3210	Fuel System and Filters	8-21660
	3212	Robert Bosch Fuel Injection Pumps	8-21670
	3213	American Bosch Fuel Injectors	8-21680
40		ELECTRICAL	
	4201	Electrical System Troubleshooting	8-22580
	4210	Tractor Electrical Wiring Diagram (Prior to P.I.N. 8860450)	8-21690
	4210	Tractor Electrical Wiring Diagram (P.I.N. 8860450 and After)	8-23370
	4220	Cab Electrical Wiring Diagram (Prior to Cab SN12013067)	8-21700
	4220	Cab Electrical Wiring Diagram (Cab SN12013067 and After)	8-22890
	4225	Steering Electrical Wiring Diagram	8-22470
	4226	Hitch Electrical Wiring Diagram (P.I.N. 8860450 and After)	8-23300
	4230	Starting Motors	8-21420
	4235	Battery Servicing and Testing	8-20291
	4240	Delco-Remy Alternator System	8-21430
	4280	Neutral Start Switch Adjustment	8-21710

SERIES	SECTION	DESCRIPTION	FORM NUMBER
50		STEERING	
	5201	Troubleshooting Solid State Selective Steering	8-22480
	5203	Electronic Steering System	8-23700
	5205	Testing Tractor Steering System	8-21720
	5210	Steering Column, Pump and Valve	8-21730
	5220	Steering Cylinder	8-21740
	5230	Steering Lines and Controls	8-21750
	5240	Rear Steering Valve	8-21760
	5250	Front Steering Priority Valve	8-21770
	5260	Rear Steering Priority Valve	8-21780
	5265	Rear Steering Check Valve (Prior to P.I.N. 8858086)	8-22001
	5265	Rear Steering Check Valve (P.I.N. 8858086 and After)	8-26430
	5280	Front and Rear Steering Adjustments	8-21790
60		POWER TRAIN	
	6201	Troubleshooting - RPS-34 Power Shift Transmission and PTO	8-20370
	6205	Testing RPS-34 Power Shift Transmission and PTO	8-21800
	6220	Torque Limiter Clutch	8-21810
	6230	RPS-34 Power Shift	8-21820
	6235	RPS-34 Control Valve and Linkage	8-21830
	6240	Four Speed Transmission	8-21840
	6245	Hydraulic PTO	8-21850
	6250	Axles and Planetaries	8-21860
	6260	Differentials and Drive Shafts	8-21871
70		BRAKES	
	7210	Brake Pedal, Master Cylinder, Service and Parking Brake	8-21880
80		HYDRAULICS	
	8202	Troubleshooting - Hitch System	8-21890
	8203	Electronic Hitch Alignment	8-23311
	8205	Testing Tractor Hydraulic System	8-21900
	8210	Hydraulic Oil Filters	8-21910
	8225	Hydraulic Pump	8-21920
	8250	Remote Hydraulic Valves	8-21930
	8255	Flow Divider and PTO Control Valve	8-21940
	8280	Hitch System	8-21950
	8281	Electronic Hitch System	8-23240
	8290	Break-Away Couplings and Portable Cylinder	8-20640
90		ACCESSORIES	
	9205	Troubleshooting - Air Conditioning System	8-21960
	9215	Gauging and Testing Air Conditioning System	8-21970
	9225	Compressor Isolation, Removal, Installation and Evacuation - Discharging, Evacuation and Charging the A. C. System	8-21980
	9235	Servicing Air Conditioner Components	8-21990
	9245	Servicing the Cab Blower	8-20690
	9250	Operators Seat Adjustments	8-20700
	9260	Removal of Tilting Hood, Grille and Side Panels	8-22010
	9280	Safety Decal Location	8-22530
100		HOW IT WORKS	
	15201	Tractor Steering System	8-22020
	15205	Case Solid State Selective Steering	8-22490
	18201	Tractor Hydraulic System	8-22030
	18225	Case CON TROL Hydraulics	8-21350

Section 1210

GENERAL SPECIFICATIONS 4490 TRACTORS

Written In *Clear
And
Simple
English*

<https://www.ebooklibonline.com>

Hello dear friend!

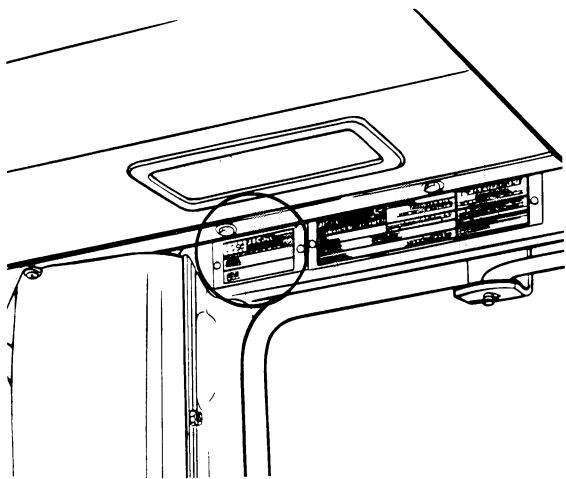
Thank you very much for reading.

Enter the link into your browser.

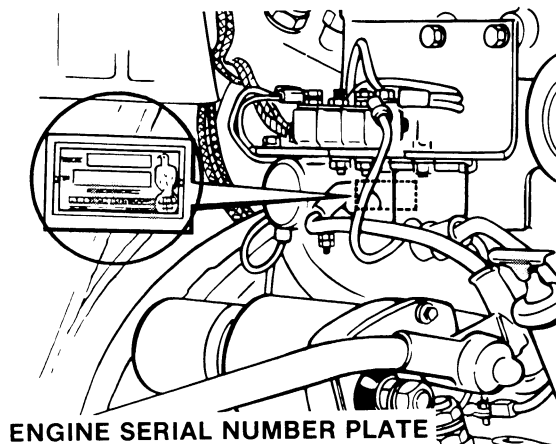
The full manual is available for immediate download.

<https://www.ebooklibonline.com>

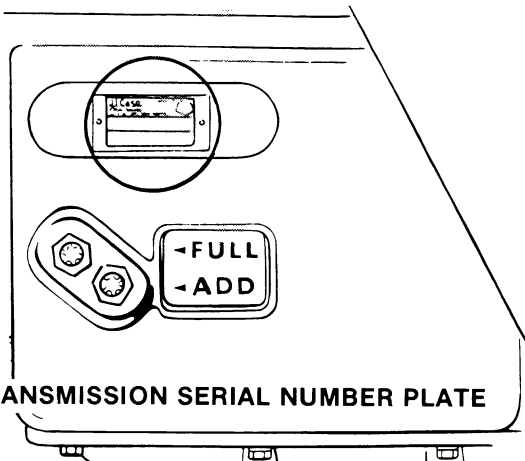
SERIAL NUMBERS



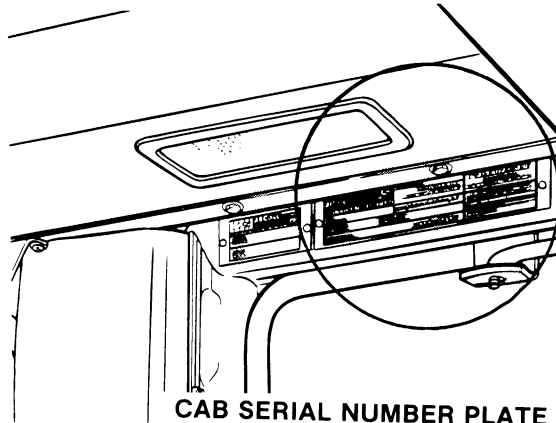
**MODEL AND PRODUCT IDENTIFICATION
NUMBER PLATE**



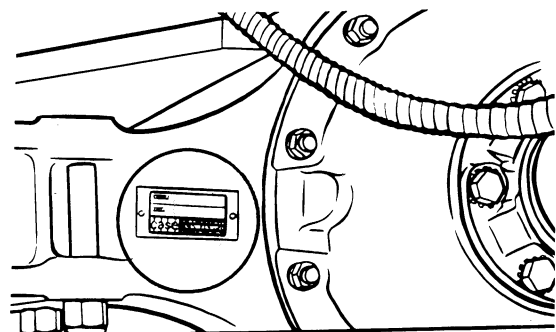
ENGINE SERIAL NUMBER PLATE



TRANSMISSION SERIAL NUMBER PLATE



CAB SERIAL NUMBER PLATE



**AXLE SERIAL NUMBER
PLATE (Front and Rear)**

DIESEL ENGINE SPECIFICATIONS

General

Type	Six Cylinder, Four Stroke Cycle, Turbocharged, Valve in Cylinder Head
Firing Order	1-5-3-6-2-4
Bore	4-5/8 Inches (117.5 mm)
Stroke	5 Inches (127 mm)
Piston Displacement	504 Cubic Inches (8 259 cm ³)
Compression Ratio	15.75 to 1
Cylinder Sleeves	Wet Type, Can be Removed
Governor Engine Speed Without Load	2340 to 2380 RPM
Rated Engine Speed	2200 RPM
Engine Idle Speed	725 to 775 RPM
Rocker Arm-to-Valve Clearance (Exhaust)	0.025 Inch (0.635 mm)
(Intake)	0.015 Inch (0.381 mm)

IMPORTANT: *Rocker Arm-to-Valve clearance adjustment must be made when the engine is not running.*

Piston and Rod

Rings Per Piston	3
Compression Rings Per Piston	2
Oil Rings Per Piston	1
Type Piston Pin	Full Float
Type Bearings	Replacement Bearings Available, Steel Back with Aluminum or Copper and lead liners.

Main Bearings

Quality of Bearings	7
Type of Bearings	Replacement Bearings Available, Steel Back With Aluminum or Copper and Lead Liners.

Engine Lubrication System

Oil Pressure	45 to 60 PSI (310 to 414 kPa)(3.1 to 4.14 bar) with Engine Warm and Operating at Rated Speed.
Type System	Pressure and Spray with Piston Oil Cooling
Oil Pump	Gear Type
Oil Filters (2)	Full Flow, Turn on Type, ByPass Valve in Filter Base.
Oil Capacity	With Filters, 28 U.S. Quarts (27 litres) Without Filters, 24 U.S. Quarts (23 litres)
Oil Cooler	Engine Oil

Fuel System

Fuel Injection Pump	Robert Bosch, Type PES.
Pump Timing	25 Degrees (BTC) Before Top Center. IMPORTANT: <i>Do not increase past 25 degrees BTC at any time. The given 25 degrees Gives Minimum Emissions in Tractor Operation and Longer Engine Life.</i>
Fuel Injectors	American Bosch, 17 mm.
Fuel Transport Pump	Plunger Type, a Part of the Fuel Injection Pump
Governor	Variable Speed, Part of the Fuel Injection Pump
First Stage Fuel Filter	Full Flow, Turn on Type
Second Stage Fuel Filter	Full Flow, Turn on Type
Water Trap and Drain For Fuel Tanks	Location is in Bottom of Each Fuel Tank
Fuel Tank Capacity	64 U.S. Gallons (242.3 litres) Each Tank, 128 U.S. Gallons (484.6 Litres) Total
Fuel Level Gauge	Electric, Location is on Instrument Cluster
Hand Primer Pump	Location is on Top of Fuel Transport Pump
Primary Fuel Filter	Location is at Bottom of Fuel Transport Pump

GENERAL TRACTOR SPECIFICATIONS

Air Intake System

Type	Dry Type Air Induction System, Two Stage with Service Indication, Strata Tube.
------------	--------------------------------------------------------------------------------

Cooling System

Capacity	48 U.S. Quarts (45.4 litres)
Type	Pressure System, Thermostat Controlled, Bypass Impeller Type Pump
Radiator	Heavy Duty Fin and Tube Type
Thermostats (2)	Start to Open at Approximately 175°F (79 °C), Fully Open at 202° F (94° C)
Pressure Cap	10 PSI (69 kPa)(6.9 bar) No Vent
Coolant Level	Low Coolant Warning Lamp on Instrument Cluster

Electrical System

Type of System	12 volt, Negative Ground
Batteries	Two 12 Volt Batteries Connected in Parallel, AABM Group Size 30H, Rated in 1.255 to 1.265 Specific Gravity. Discharge Rate 300 Amperes at 0°F. Voltage Decrease to 9.2 After 10 Seconds. Voltage Decreases 1.0 Volt per Cell After 5 Minutes.
Alternator	12 Volt, 72 Ampere Output, Negative Ground
Voltage Regulator	12 Volt, Solid State, Inside Component of Alternator
Starting Motor	12 Volt with Solenoid Switch
Headlights (2)	12 Volt, 40/60 Watt Sealed Beam High-Low
Floodlights (8 max)(Optional)	12 Volt, 50 Watt, Sealed Beam
Flasher Lights (2) With Direction Turn Signals	12 Volt, Amber Lens
Rear Flood and Taillight	12 Volt, 35 Watt Sealed Beam With Taillight Bulb.
Tractor Electrical System Circuit Breaker	12 Volt, Dual 50 Ampere Circuit Breakers Connected in Parallel, 100 Ampere Rating, 80 Ampere Continuing Capacity.
Cab Electrical System Circuit Breaker	12 Volt, 20 Ampere
Bulb and Lamp Replacement:	
Instrument Cluster Warning Bulbs	No. 168
Instrument Cluster Illumination Bulbs	No. 194
Dome Light Bulb	No. 93
Console Light Bulb	No. 194
Flasher Light Bulbs	No. 1156
Headlight Lamps	No. 4652
Front and Rear Floodlights	No. H7606
Rear Flood and Taillight:	
Lamp	No. 4409
Bulb	No. 1156
Fuse and Circuit Breaker Replacement:	
Wiper	7.5 Ampere
Instrument Panel Lights	5.0 Ampere
Headlight Low Beam	15 Ampere
Accessories	15 Ampere
Blower	15 Ampere
Radio	3.0 Ampere
Headlight High Beam	15 Ampere
Key Switch	20 Ampere
Cigarette Lighter	15 Ampere
Console Light	3.0 Ampere
Rear Floodlights (Optional)	20 Ampere
Rear Steering	3.0 Ampere
Dome Light	3.0 Ampere
Flasher Warning Lights	15 Ampere
Front Floodlights (Optional)	20 Ampere
Sound Warning for	Transmission Filters, Engine Oil Pressure, Coolant Temperature and Hand Brake.

Tractor Brakes

Type Hydraulic Actuated, Self-Adjusting,
Several Plate Dry Type.

Parking Brake

Type Cable Actuated by over center Type Handle Adjustable
from Operators Seat. Several Plate Type.

Power Shift Transmission

Type Three Speed Compound Planetary with Hydraulically
Actuated Clutches and Four Speed Gear Section.

Gear Selection 12 Speeds Forward and Four Speeds Reverse

Shift Control Hydraulic Power Shift Controlled by a Mechanical Shifter
Actuated by Levers on the Instrument Console.

Oil Cooler Transmission, Hydraulic and Steering Oil

Oil Type Case PTF Power Transmission Fluid

Oil Refill Capacity (With PTO and Hitch) *32 U.S. Quarts (30.3 litres)

(No PTO) *30 U.S. Quarts (28.4 litres)

*Includes 8 Qts (7.6 litres) for Filter Change.

Hydrostatic Front Power Steering

Oil Supply Hydraulic Pump, 15 gpm (56.8 litres/min) at 2200 RPM and
2000 PSI (13 790 kPa)(137.9 bar). 10 gpm (38 litres/min) for
front steering and 5 gpm (19 litres/min) returns to filters.

Relief Valve Pressure 2250 PSI (15 414 kPa)(154.1 bar)

Front Steering Cylinders Two Cylinders with two way action

Steering Pump Hydrostatic Type, Actuated by the steering wheel

Rear Power Steering

Oil Supply Hydraulic Pump, 10 gpm (37.85 litres/min) at 2200 RPM

Relief Valve Pressure 1650 to 1900 PSI (11 377 to 13 101 kPa)
(113.8 to 131 bars)

Rear Steering Cylinders Two Cylinders with Two Way Action

Controls Selective Steering with Automatic rear Steering with
all Wheels Controlled by steering wheel or rear wheels
Controlled by a hydraulic-electric servo system with
three position selection switch and a toggle switch on
operator console.

Axle Differential and Planetaries

Front and Rear Spiral Bevel with Planetary Reduction in hub.

Differential Oil Capacity 19 U.S. Quarts (18 litres) Each Differential

Planetary Oil Capacity 11 U.S. Quarts (10.4 litres) Each Planetary

Hitch System

Type Control	Hand Lever
Type Valve	Three Position - Lift, Hold and Lower
Type Draft Arms	Rigid, Swing Type with Manual Float Adjustment
Type Hitch	Three Point, Category III
Hitch Coupler (Available)	Category III

Remote Hydraulic System

Pump	Axial Piston Pump, Pressure and Flow Compensated
Type Remote Valve	Closed Center, Two to Four Sections, Hand Lever Control, Variable Flow Control for Each Section.
Pump Capacity at 2200 RPM	31 GPM (117.4 litres/min) at 2000 PSI (13 790 kPa)(137.9 bar).
Max System Pressure	2250 PSI (15 503 kPa)(155 bar)
Couplings	ASAE R366 Standard, Fast Removal, Break Away Type
Hydraulic Charge Pump	43 GPM (162.8 litres/min) at 2200 RPM and 100 PSI (240 kPa)(2.4 bar).
Charge Circuit Relief Valve Pressure	35 PSI (241 kPa)(2.41 bar)

Power Takeoff

Type Clutch	Hydraulic Actuated
Rotation	Clockwise
Spline Size	21 Splines, 1-3/8 inch (34.9 mm) Diameter
Engine Speed 2200 RPM	1000 RPM Shaft Speed

Drawbar

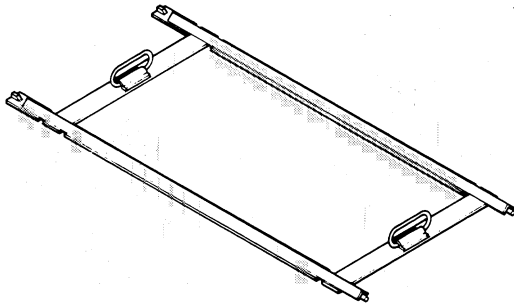
Standard or Yoke Type	Full Swing, Roller Mount, Takes a 1-1/2 inch (38.1 mm) Diameter Pin
-----------------------------	------------------------------------------------------------------------

SPECIAL TORQUES

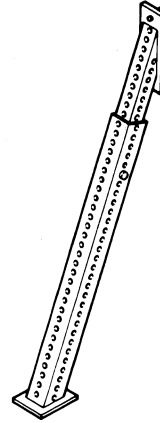
	U.S. Value	Metric Value
Engine To Torque Tube (1/2 inch, Grade 5 Bolts)	80 to 96 lb ft	109 to 130 Nm (10.9 to 13.0 kgm)
Engine To Torque Tube (1/2 inch, Grade 8 Bolts)	110 to 132 lb ft	149 to 179 Nm (14.9 to 17.9 kgm)
Engine To Torque Tube (3/4 inch, Grade 5 Bolts)	270 to 324 lb ft	366 to 439 Nm (36.6 to 43.9 kgm)
Seal Plate Inner Capscrews	15 to 20 lb ft	20 to 27 Nm (2.0 to 2.7 kgm)
Seal Plate Outer Capscrews	35 to 42 lb ft	48 to 57 Nm (4.8 to 5.7 kgm)
Seal Plate (1/2 inch Bolts)	80 to 96 lb ft	109 to 130 Nm (10.9 to 13.0 kgm)
Side Rail Bolts	150 to 180 lb ft	203 to 244 Nm (20.3 to 24.4 kgm)
Axle Retaining Bolts (7/8 inch For 70 and 90 Series Tractors) ...	600 to 720 lb ft	814 to 976 Nm (81.4 to 97.6 kgm)
Axle Retaining Bolts (7/8 inch For 94 Series Tractors)	400 to 480 lb ft	542 to 651 Nm (54.2 to 65.1 kgm)
Axle Retaining Bolts (1-1/8 inch For 70 and 90 Series Tractors)	1,300 to 1,400 lb ft	1 763 to 1 898 Nm (176.3 to 189.8 kgm)
Axle Retaining Bolts (1-1/8 inch For 94 Series Tractors)	800 to 880 lb ft	1 085 to 1 193 Nm (108.5 to 119.3 kgm)
Differential Drive Shaft (3/8 inch, Grade 5 Bolts)	35 to 42 lb ft	48 to 57 Nm (4.8 to 5.7 kgm)
Differential Drive Shaft (3/8 inch, Grade 8 Bolts)	45 to 54 lb ft	61 to 73 Nm (6.1 to 7.3 kgm)
Differential Drive Shaft (1/2 inch, Grade 5 Bolts)	80 to 96 lb ft	109 to 130 Nm (10.9 to 13.0 kgm)
Differential Drive Shaft (1/2 inch, Grade 8 Bolts)	110 to 132 lb ft	149 to 179 Nm (14.9 to 17.9 kgm)
Rear Transmission Bracket Bolts	150 to 180 lb ft	203 to 244 Nm (20.3 to 24.4 kgm)
Front Transmission Spacer Bolts	270 to 324 lb ft	366 to 439 Nm (36.6 to 43.9 kgm)
Transmission Oil Manifold Bolts	35 to 42 lb ft	48 to 57 Nm (4.8 to 5.7 kgm)
PTO Universal Joint (3/8 inch, Grade 5 Bolts)	35 to 42 lb ft	48 to 57 Nm (4.8 to 5.7 kgm)
PTO Universal Joint (3/8 inch, Grade 8 Bolts)	45 to 54 lb ft	61 to 73 Nm (6.1 to 7.3 kgm)
Torque Tube Spacer Bolts	150 to 180 lb ft	203 to 244 Nm (20.3 to 24.4 kgm)

SPECIAL TOOLS

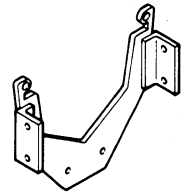
CAS-10500 FOUR WHEEL DRIVE SPLITTING SET COMPLETE



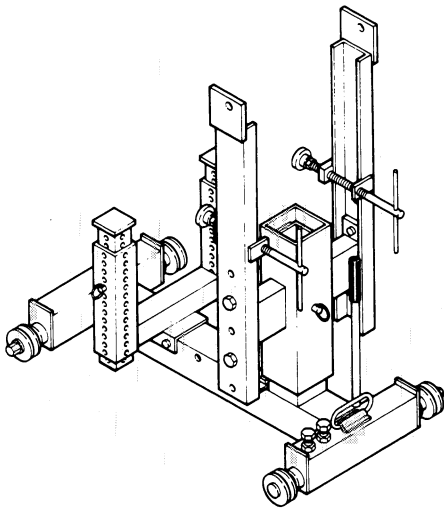
CAS-10500-6 TRACK ASSEMBLY 2 ENDS 3 CENTER
CAS-10501 ONE SECTION OF CENTER TRACK



ENGINE SAFETY STANDS
(PART OF COMPLETE SET)



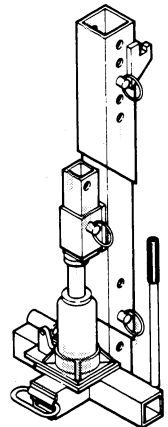
2470 AND 2670 ENGINE YOKE
(PART OF COMPLETE SET)



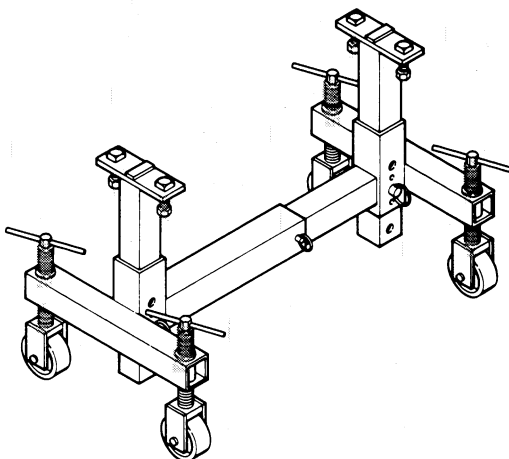
CAS-10500-3 TRANSMISSION CART



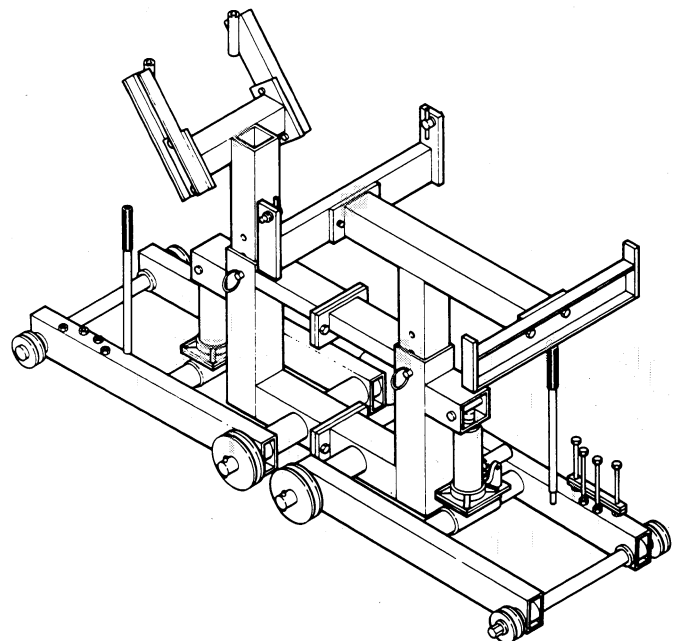
CAS-10500-5 FRAME LOCKS (2)



CAS-10500-1 SIDE FRAME JACKS (2)



CAS-10500-4 AXLE CART



CAS-10500-2 ENGINE CART

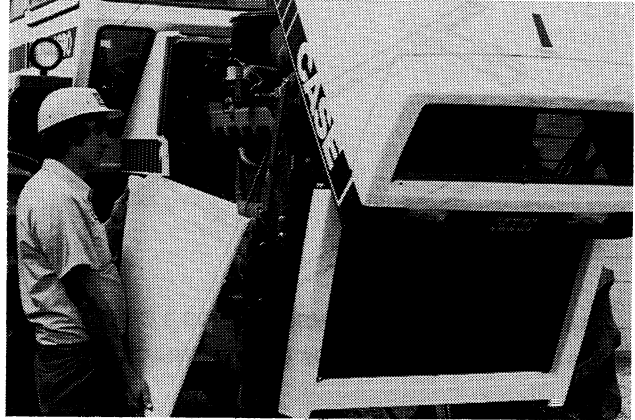
Disconnects For Engine, Front Axle And Transmission Removal

STEP 1



Pull the latch on each side of the tractor to release the hood.

STEP 4



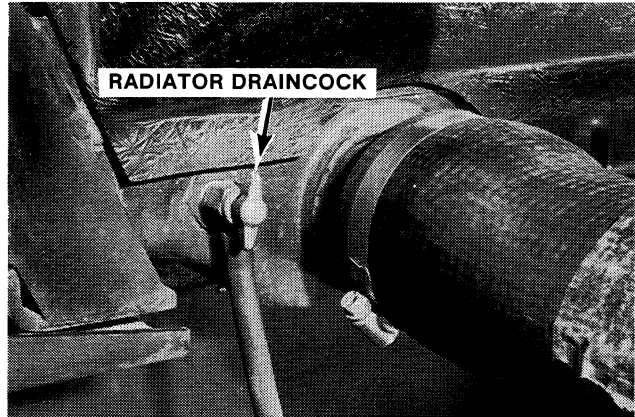
Remove the two side panels. To remove the sheet metal and radiator on the 2470 and 2670, see Section 2032 in your Case Service Manual.

STEP 2



Lift the hood until the front hinge is in the lock position.

STEP 5



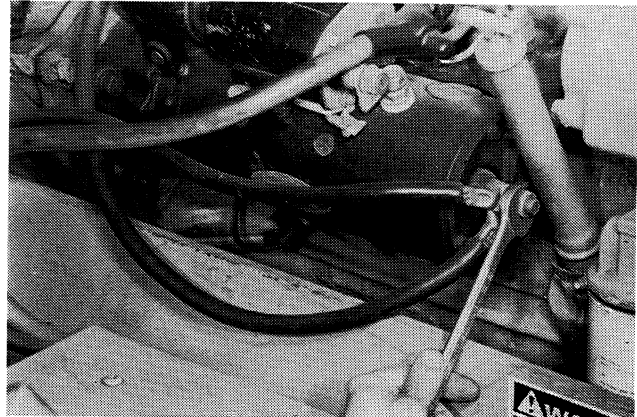
Drain the coolant from the radiator.

STEP 3



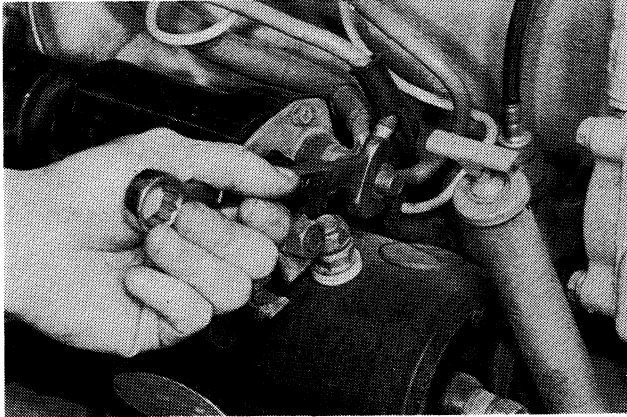
Make sure the hood is completely held in the up position by the hinge lock.

STEP 6



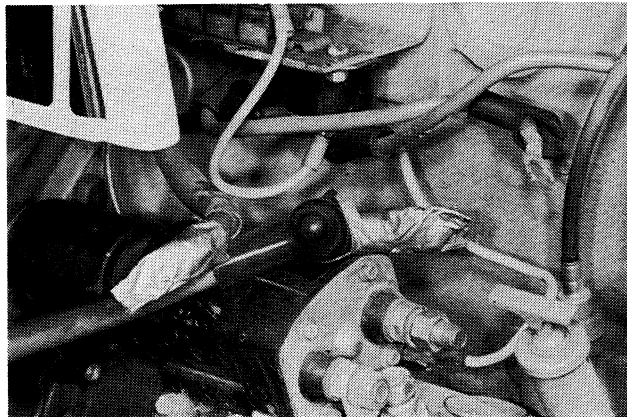
Remove the battery ground cables (negative black) from the starting motor.

STEP 7



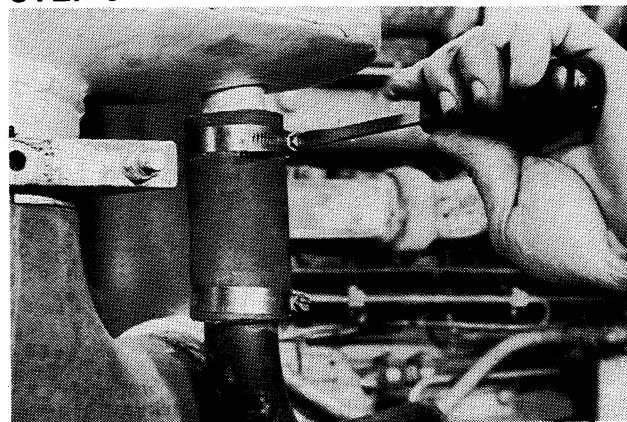
Remove the battery positive (red) cables from the solenoid on the starting motor.

STEP 8



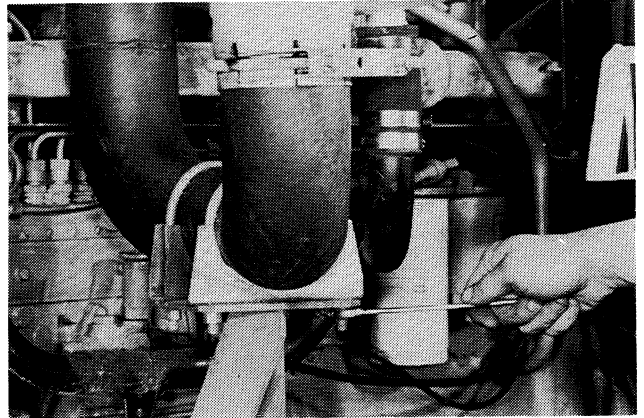
Put tape on the end of the positive (red) battery cables to prevent spark caused by an accident.

STEP 9



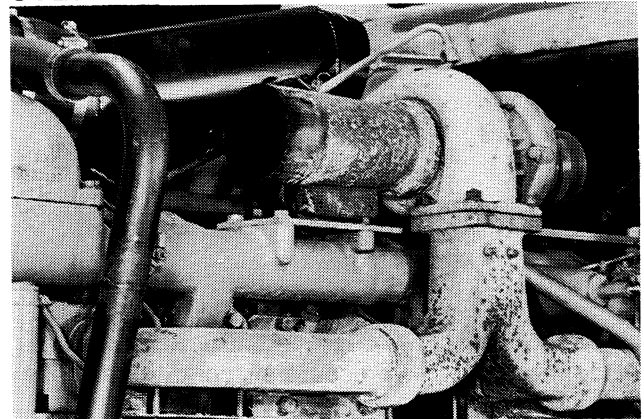
Remove the upper clamp that holds the aspirator hose to the muffler.

STEP 10



Remove the two clamps that hold the muffler tube to the support bracket. Remove the muffler and tube from the tractor.

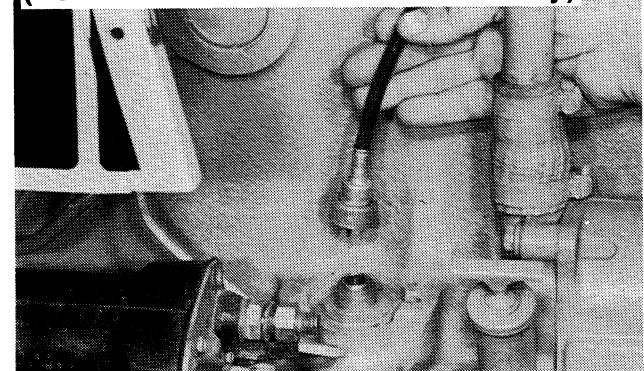
STEP 11



Muffler removed from the tractor.

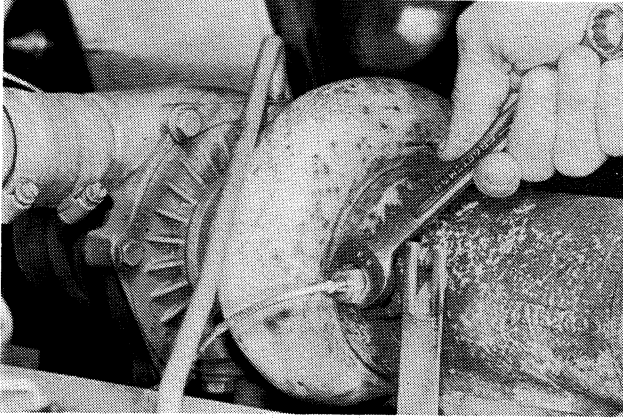
STEP 12

(For 70 and 90 Series Tractors Only)



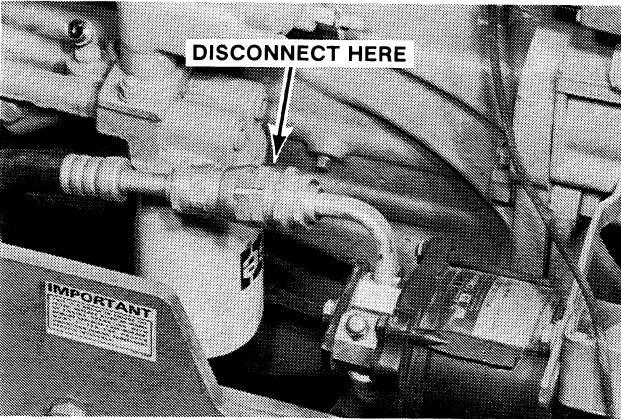
Disconnect the tachometer drive cable from the engine.

STEP 13



Remove the pyrometer sensing unit.

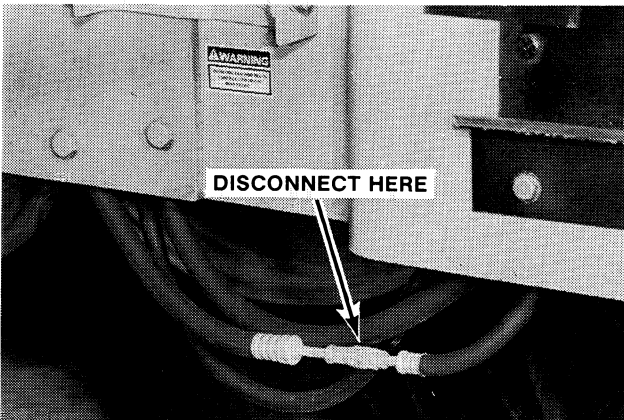
STEP 14



Disconnect the low pressure air conditioner hose at the coupler.

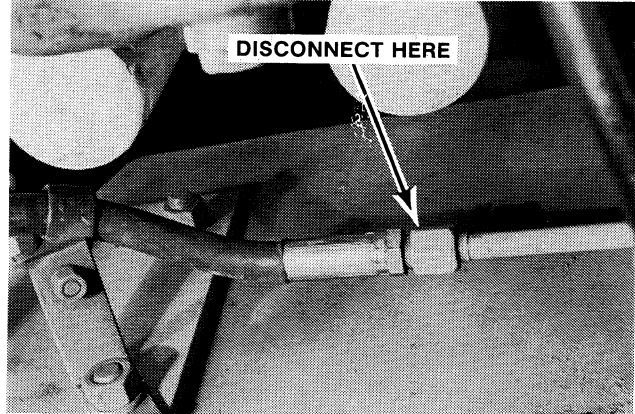
NOTE: *Disconnecting the air conditioner hoses at the coupler will prevent the loss of refrigerant.*

STEP 15



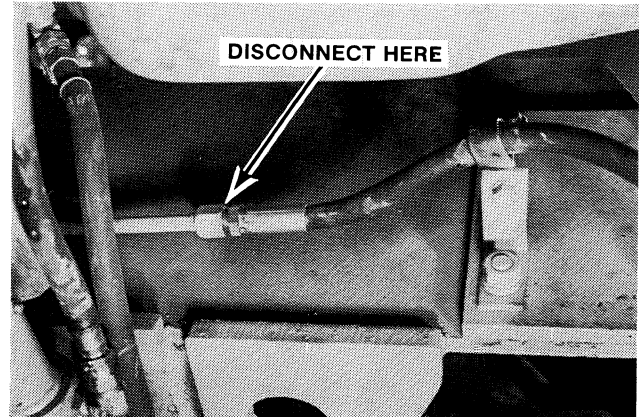
Disconnect the air conditioner hose from the cab to the receiver-drier.

STEP 16



Disconnect the RH oil cooler hose at the inside of the RH side rail.

STEP 17



Disconnect the LH oil cooler hose at the inside of the LH side rail.

STEP 18

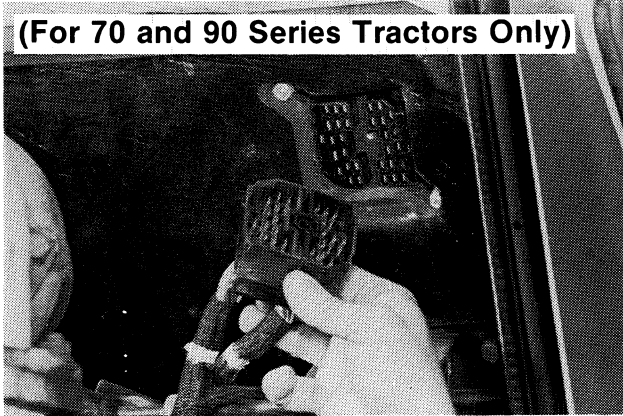
(For 70 and 90 Series Tractors Only)



Remove the retaining bolt for the wiring harness connector.

STEP 19

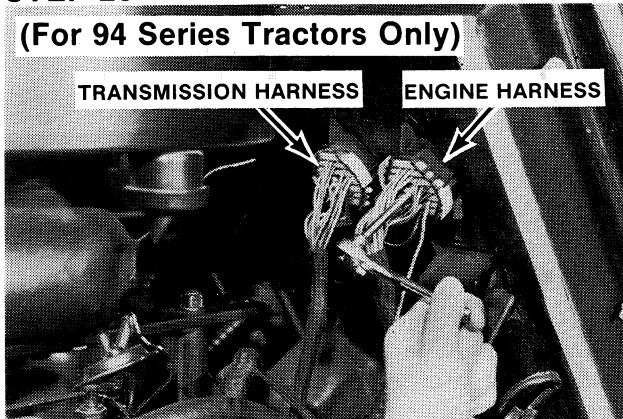
(For 70 and 90 Series Tractors Only)



Pull the wiring harness connector from the firewall connector. Disconnect small connectors from the cab harness as needed.

STEP 20

(For 94 Series Tractors Only)



Loosen the bolt that retains the engine harness connector to the firewall connector.

STEP 21

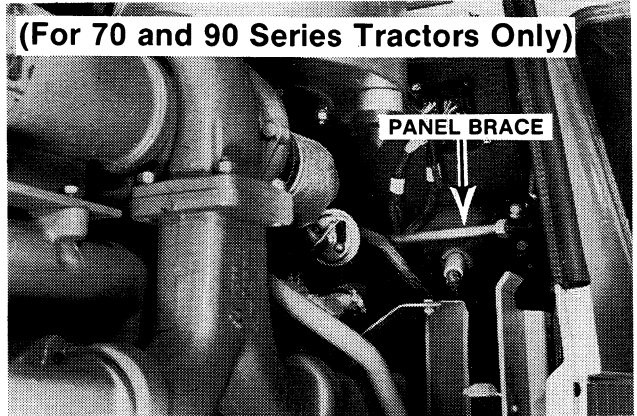
(For 94 Series Tractors Only)



Disconnect the engine harness connector from the firewall connector.

STEP 22

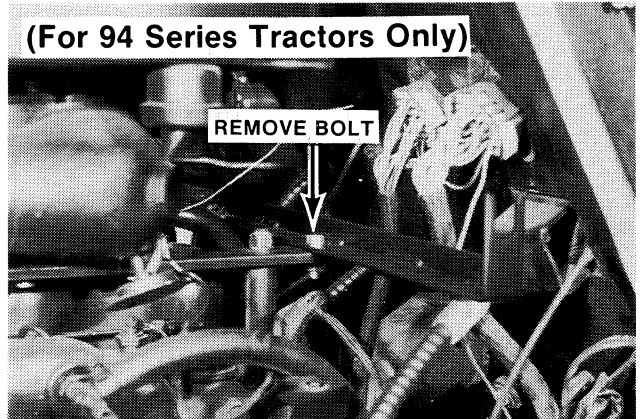
(For 70 and 90 Series Tractors Only)



Remove the panel brace from the panels.

STEP 23

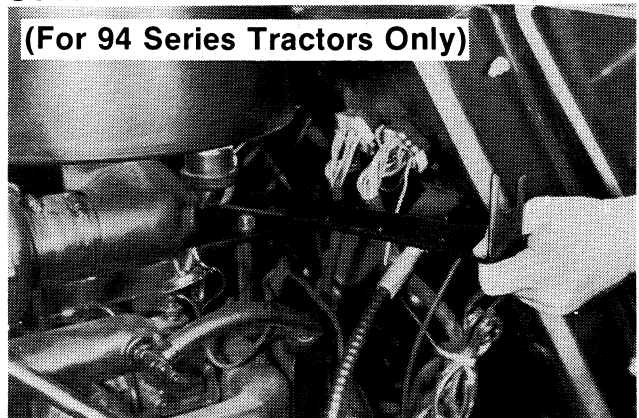
(For 94 Series Tractors Only)



Remove the retaining bolt from the adjustment bar for the hood rear side panels.

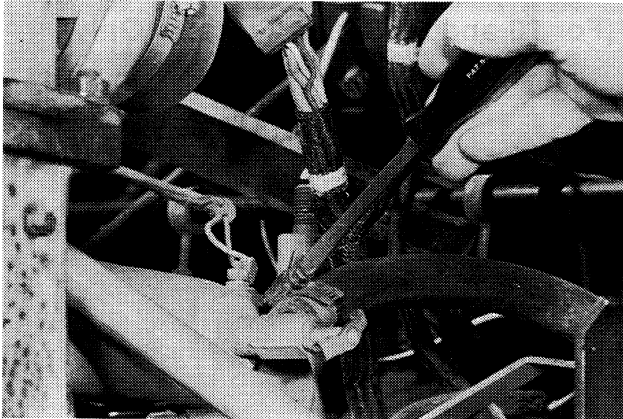
STEP 24

(For 94 Series Tractors Only)



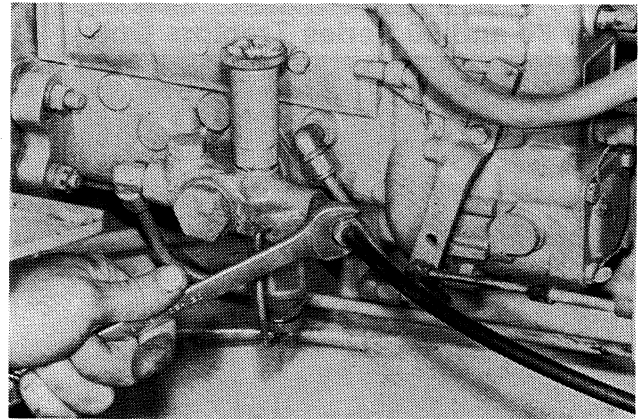
Remove the adjustment bar.

STEP 25



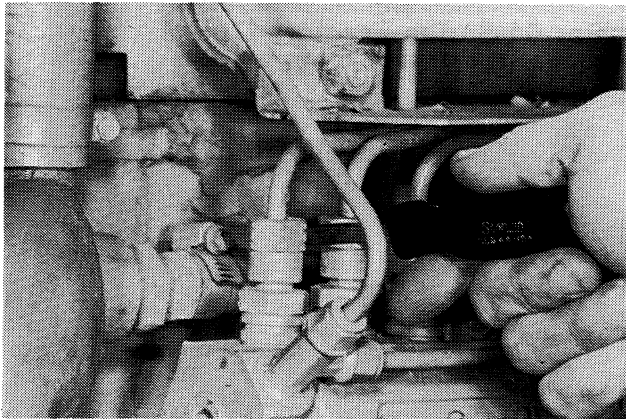
Remove the heater hose from the shutoff valve.

STEP 28



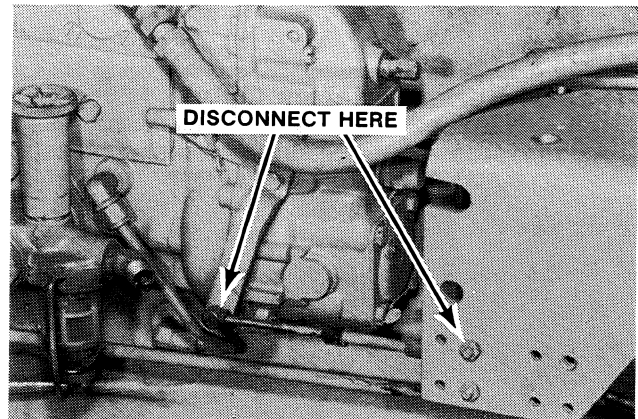
Disconnect the fuel supply line from the fuel pump.

STEP 26



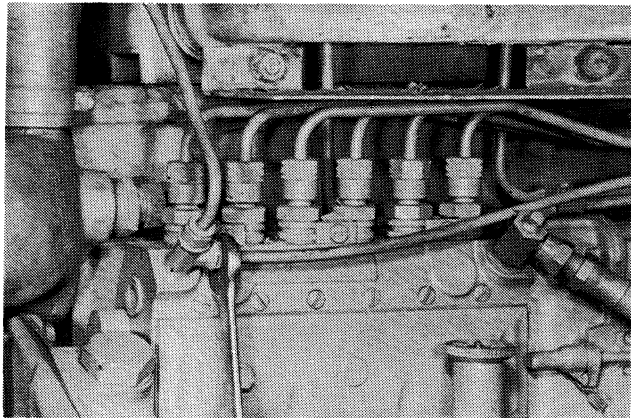
Remove the heater return hose from the water pump housing.

STEP 29



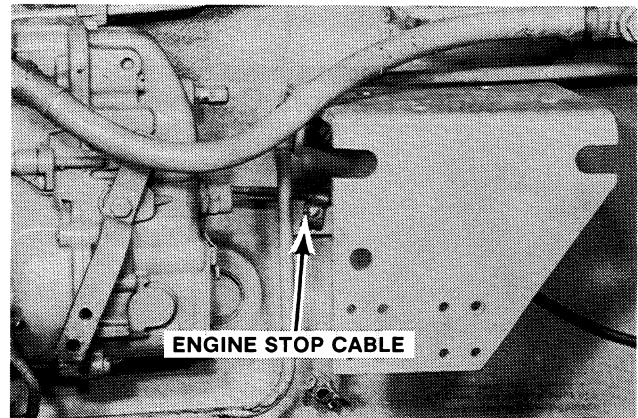
Remove the throttle cable from the fuel pump and throttle bracket.

STEP 27



Disconnect the fuel return line from the fuel pump.

STEP 30



Remove the engine stop cable from the fuel pump and throttle bracket.



Suggest:

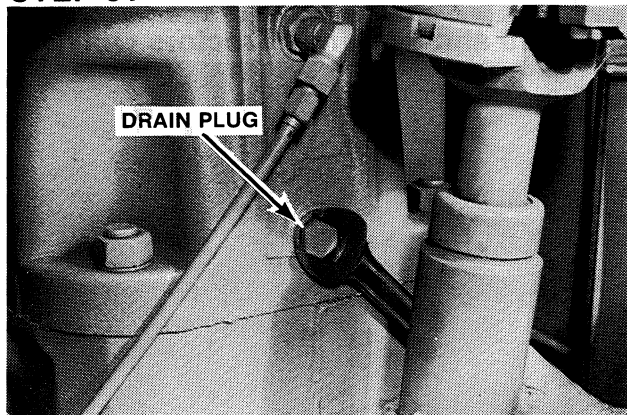
If the above button click is invalid.

Please download this document

first, and then click the above link

to download the complete manual.

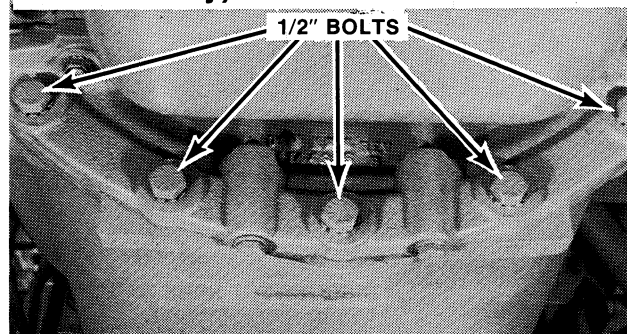
Thank you so much for reading

STEP 31

Remove the drain plug from the torque tube and drain the torque tube oil.

STEP 32

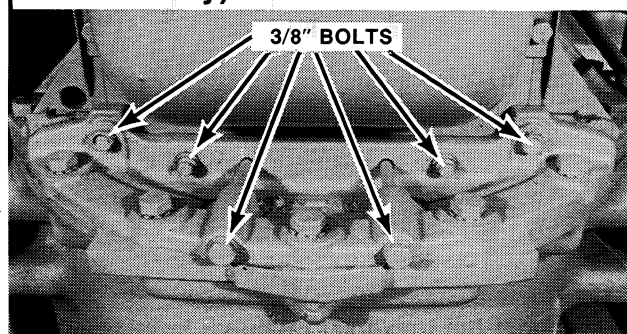
(2470, 2670, 4490, 4690, 4494 and 4694 Tractors Only)



Remove the 1/2" bolts and washers from the torque tube seal plate.

STEP 33

(2470, 2670, 4490, 4690, 4494 and 4694 Tractors Only)

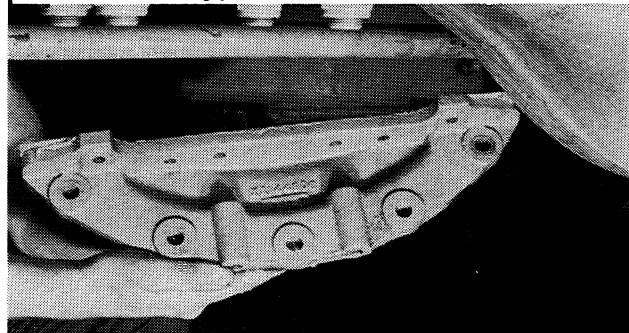


Remove the 3/8" bolts and washers from the torque tube seal plate.

NOTE: A 3/8 inch-12 point universal socket is needed to remove the four center retaining bolts.

STEP 34

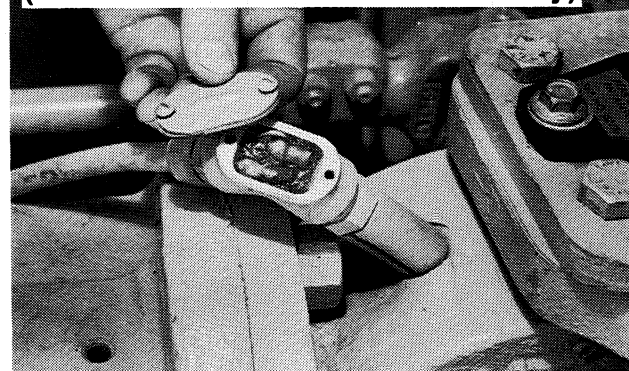
(2470, 2670, 4490, 4690, 4494 and 4694 Tractors Only)



Remove the seal plate.

STEP 35

(For 90 and 94 Series Tractors Only)



Remove the cover and gasket from the wiring junction box on the front axle.

STEP 36

(For 90 and 94 Series Tractors Only)



Use a small knife to cut the insulation tubes from each of the three wires.

<https://www.ebooklibonline.com>

Hello dear friend!

Thank you very much for reading.

Enter the link into your browser.

The full manual is available for immediate download.

<https://www.ebooklibonline.com>