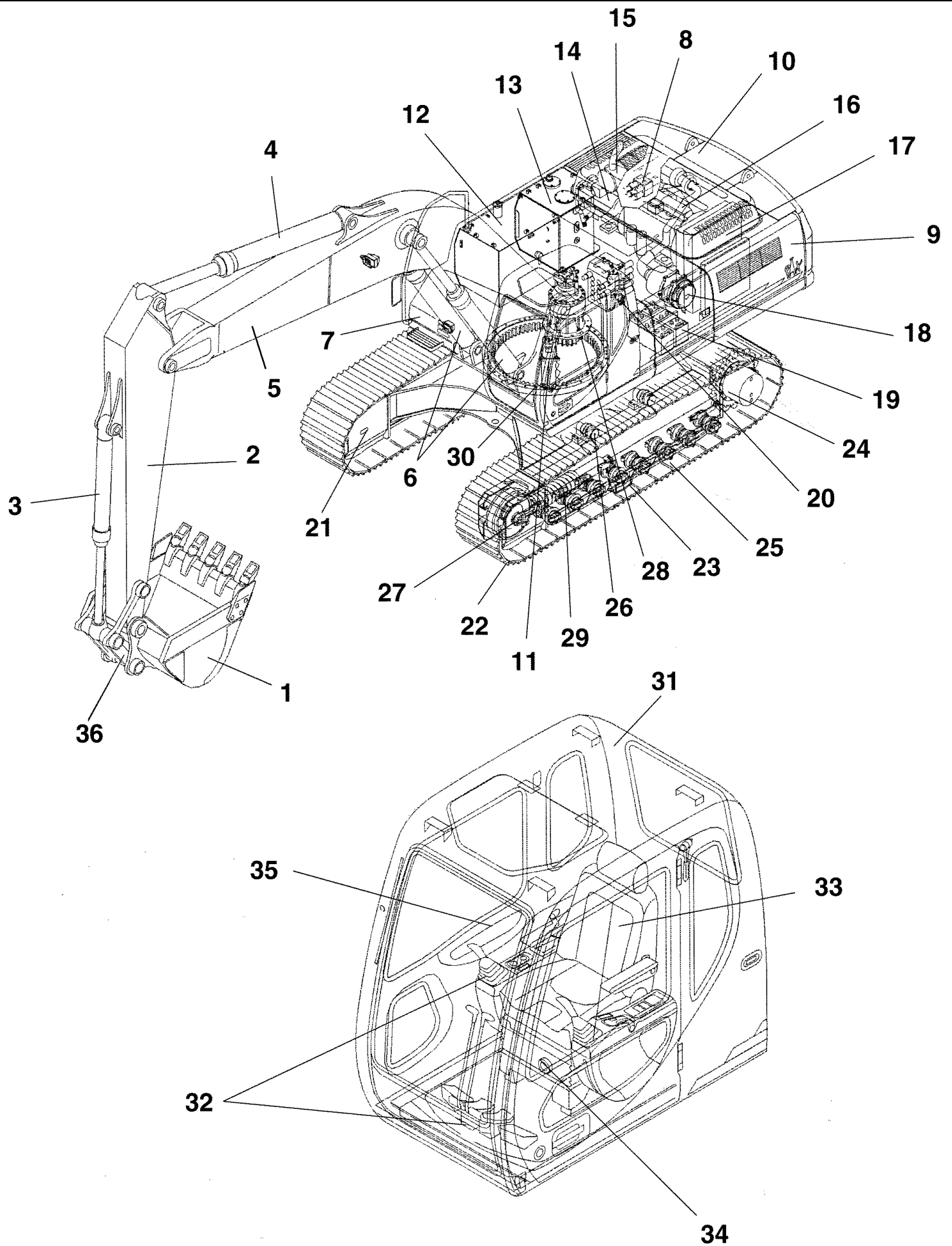




PARTS CATALOGUE

CX330
CASE CRAWLER EXCAVATOR (EUR)

DC33B6001, DCH330R3N5EAP7001
& after



00-001-00(01) COMPONENT INDEX

Ref	Part Number	Qty	Description
1		1	BUCKET - See Pages 09-300-00 01 To 09-316-00 01
2		1	DIPPER - See Pages 09-200-00 01 To 09-203-00 01
3		1	BUCKET CYLINDER - See Pages 08-020-00 01 To 08-023-00 01
4		1	DIPPER CYLINDER - See Pages 08-017-00 01, 08-018-00 01, 08-019-00 01
5		1	MONOBLOCK BOOM - See Pages 09-100-00 01, 09-100-01 01, 09-101-00 01
6		1	BOOM CYLINDER - See Pages 08-012-00 01 To 08-015-00 01
7		1	UPPERSTRUCTURE CHASSIS - See Pages 09-002-00 01, 09-003-00 01
8		1	SOLENOID VALVE - See Page 08-250-00 01
9		1	COWLING - See Pages 09-005-00 01 To 09-008-01 01
10		1	COUNTERWEIGHT - See Pages 09-004-00 01, 09-004-01 01
11		1	SWING JOINT - See Page 07-010-00 01
12		1	FUEL TANK, FUEL SYSTEM - See Pages 03-001-00 01 To 03-042-01 01
13		1	HYDRAULIC RESERVOIR, HYDRAULIC SYSTEM - See Pages 08-001-00 01, 08-004-00 01 To 08-056-00 01
14		1	HYDRAULIC PUMP - See Pages 08-002-00 01, 08-003-00 01, 08-100-00 01 To 08-108-00 01
15		1	EXHAUST ENGINE - See Page 02-003-00 01
16		1	ENGINE - See Pages 02-001-00 01, 02-005-01 01 To 02-110-01 01
17		1	RADIATOR - See Pages 02-004-00 01, 02-004-01 01
18		1	AIR FILTRATION - See Page 02-002-00 01
19		1	BATTERIES, ELECTRICAL SYSTEM - See Pages 04-001-00 01 To 04-815-02 01
20		1	CONTROL VALVE - See Pages 08-200-00 01 To 08-206-00 01
21		1	UNDERCARRIAGE, HYDRAULIC CIRCUIT - See Pages 05-001-00 01, 05-001-01 01 To 07-001-00 01, 07-001-01 01
22		1	TRACK FOOT STEP - See Pages 05-006-00 01 To 05-010-00 01
23		1	GUIDE, CHAIN - See Pages 05-011-00 01, 05-011-01 01
24		1	TRAVEL MOTOR AND REDUCTION GEAR - See Pages 06-001-00 01, 06-010-00 01, 07-011-00 01, 07-012-00 01
25		1	ROLLER LOWER - See Page 05-003-00 01
26		1	ROLLER UPPER - See Page 05-002-00 01
27		1	GUIDE PULLEY - See Page 05-004-00 01
28		1	SWING MOTOR-DRIVE REDUCTION GEAR - See Pages 06-002-00 01, 08-220-00 01
29		1	TENSION DAMPER - See Page 05-005-00 01
30		1	SWING COMPONENTS, LUBRICATION CIRCUIT - See Page 09-001-00 01
31		1	OPERATORS COMPARTMENT, CAB - See Pages 09-010-00 01 To 09-018-00 01, 09-029-00 01 To 09-043-00 01
32		1	OPERATORS COMPARTMENT, LEVER, CONTROL - See Page 09-032-00 01
33		1	OPERATORS COMPARTMENT - SEAT AND CONTROL ARM MOUNTING - See Pages 09-019-00 01 To 09-023-00 01
34		1	CAB AIR CONDITIONING - Sees Pages 09-024-00 01 To 09-028-00 01
35		1	SIDE INSTRUMENT PANEL - See Page 04-009-00 01
36		1	BUCKET CONTROL See Page 09-300-00 01

<https://www.ebooklibonline.com>

Hello dear friend!

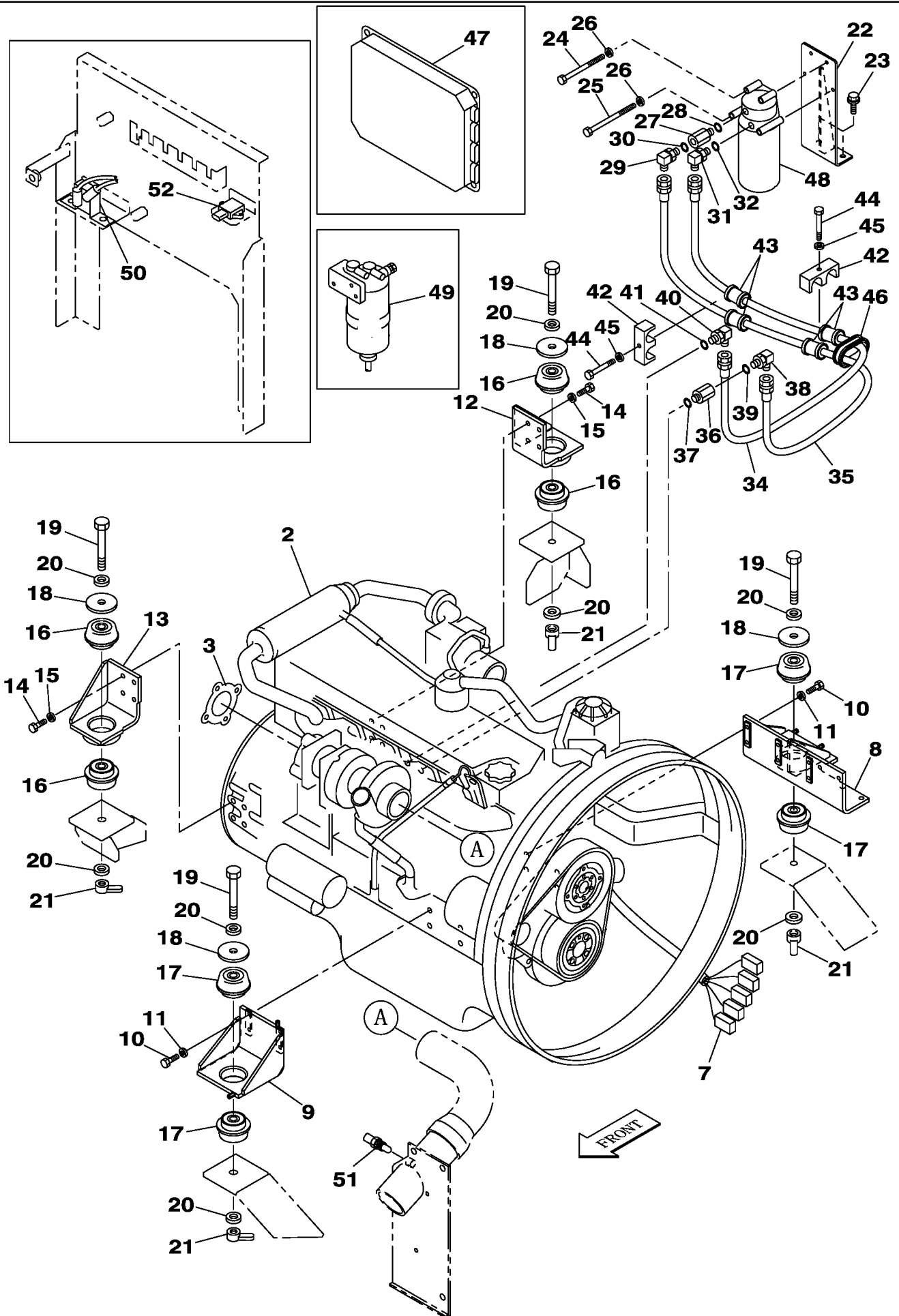
Thank you very much for reading.

Enter the link into your browser.

The full manual is available for immediate download.

<https://www.ebooklibonline.com>

02-001-00(01) ENGINE MOUNTING - ENGINE



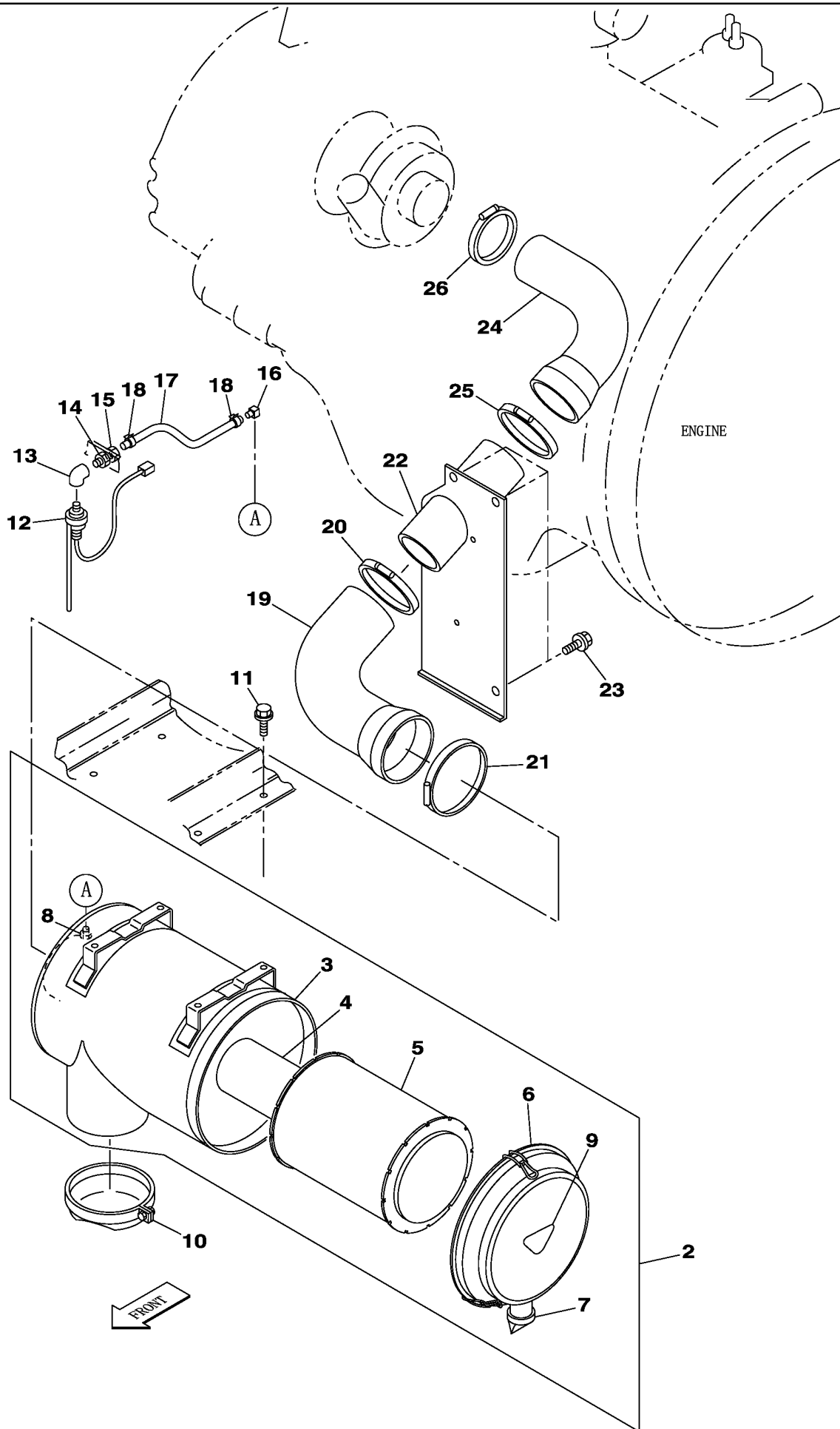
02-001-00(01) ENGINE MOUNTING - ENGINE

Ref	Part Number	Qty	Description
2	KSH10070	1	ENGINE ASSY, , Consists Of Ref. Number 3, 7, 47 To 52, Also Page(s) 02-005-01 01 To 02-110-01 01, 03-040-01 01 To 03-042-01 01, 04-060-01 01 To 04-815-02 01
3	REF	1	INSTRUCTION, Gasket, See Page(s) 02-150-01 01 Ref. 84
7	REF	1	INSTRUCTION, Harness, See Page(s) 04-810-01 01 Ref. 71
8	KSH1067	1	SUPPORT,
9	KSH0908	1	SUPPORT ASSY.,
10	627-10035	1	BOLT, Hex, M10 x 35, 10.9, Full Thd,
11	150409A1	1	WASHER, W M10
12	KSH0909	1	SUPPORT ASSY.,
13	KSH0910	1	SUPPORT ASSY.,
14	627-12040	1	BOLT, Hex, M12 x 40, 10.9, Full Thd, M12 x 40
15	150811A1	1	WASHER, W12
16	KTH0566	1	INSULATOR BLOCK,
17	KTH0567	1	INSULATOR BLOCK,
18	150874A1	1	WASHER,
19	827-20150	1	BOLT, Hex, M20 x 150, 10.9, M10 x 150
20	150817A1	1	WASHER, W 20
21	KSH0923	1	NUT,
22	KSH1055	1	SUPPORT,
23	166352A1	1	BOLT, M13 x 30
24	102R008Y110R	1	BOLT, M8 x 110
25	KHH0515	1	BOLT, M8 x 140
26	153081A1	1	WASHER, W M8
27	152012A1	1	CONNECTOR,
28	150542A1	1	O-RING,
29	157580A1	1	ELBOW,
30	150542A1	1	O-RING,
31	157580A1	1	ELBOW,
32	150542A1	1	O-RING,
34	KSH1054	1	HOSE, 1550 mm
35	KSH1056	1	HOSE, 1670 mm
36	152012A1	1	CONNECTOR,
37	154503A1	1	O-RING,
38	157580A1	1	ELBOW,
39	154503A1	1	O-RING,
40	157580A1	1	ELBOW,
41	154503A1	1	O-RING,
42	KHJ2283	1	CLAMP,
43	KHJ2023	1	CLAMP, HOSE,
44	827-10065	1	BOLT, Hex, M10 x 65, 10.9, M10 x 65
45	150409A1	1	WASHER, W M10
46	KEJ0421	1	GROMMET,
47	REF	1	INSTRUCTION, Control Unit, See Page(s) 04-060-01 01 Ref. 613
48	REF	1	INSTRUCTION, Oil Filter, See Page(s) 02-050-02 01 Ref. 496
49	REF	1	INSTRUCTION, Fuel Filter, See Page(s) 03-041-01 01 Ref. 1

02-001-00(01) ENGINE MOUNTING - ENGINE

Ref	Part Number	Qty	Description
50	REF	1	INSTRUCTION, Relay, See Page(s) 04-060-01 01 Ref. 424
51	REF	1	INSTRUCTION, Sensor, See Page(s) 04-060-01 01 Ref. 797
52	REF	1	INSTRUCTION, Sensor, See Page(s) 04-060-01 01 Ref. 796

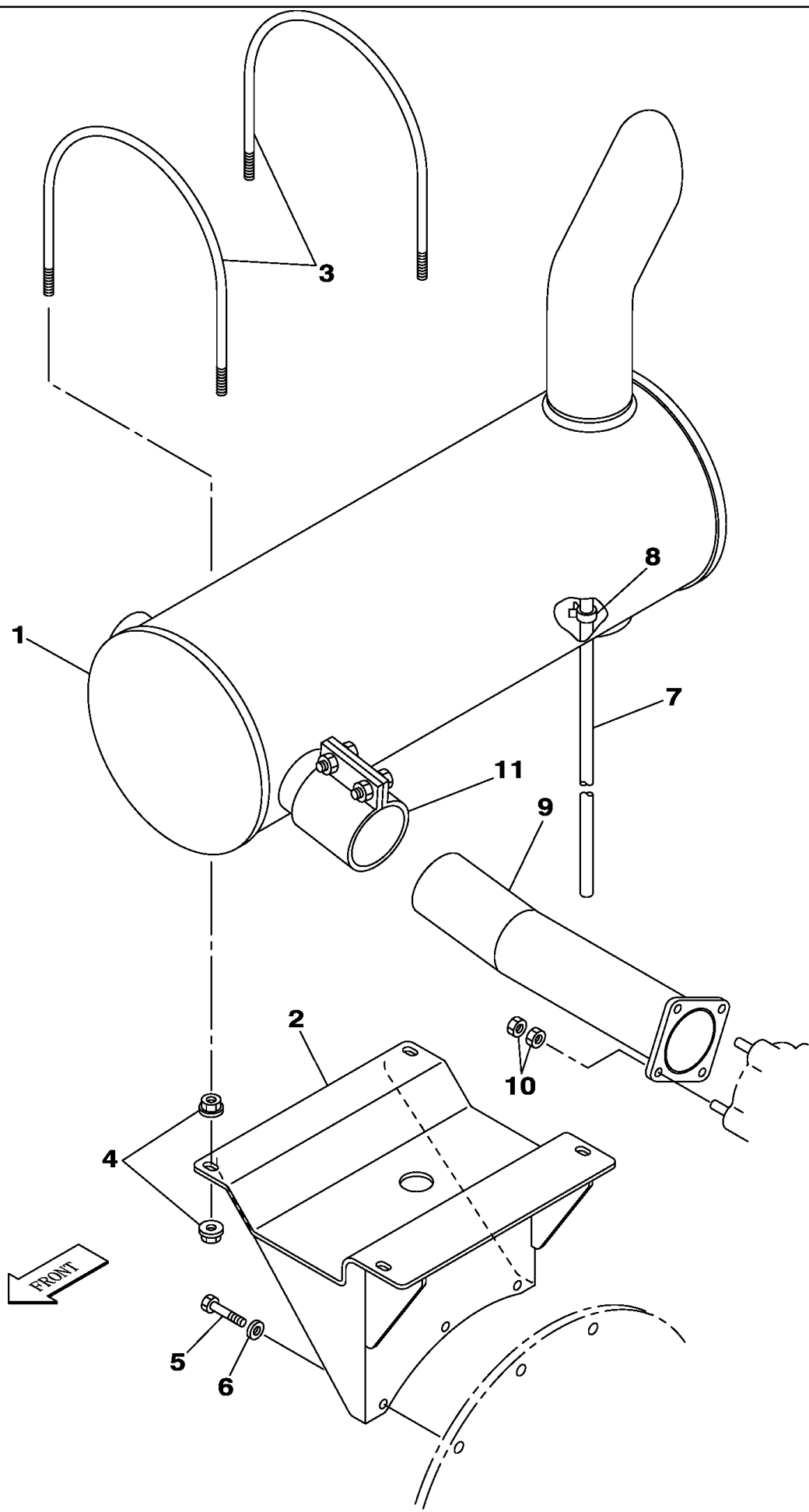
02-002-00(01) AIR FILTRATION



02-002-00(01) AIR FILTRATION

Ref	Part Number	Qty	Description
2	KSH0930	1	FILTER ASSY., , Consists Of Ref. Numbers 3 To 9
3	KSH0931	1	CASE,
4	KSH0932	1	FILTER, AIR, , Secondary
5	KSH0933	1	FILTER, AIR, , Primary
6	KSH0934	1	COVER,
7	KTH0579	1	VALVE,
8	KSH0935	1	FITTING,
9	NSS	1	NOT SERVICED SEPARATELY,
10	166564A1	1	CAP,
11	166347A1	4	BOLT, M10 x 30
12	KHH10330	1	SENSOR,
13	165818A1	1	ELBOW,
14	KRH1236	1	SEAL,
15	157742A1	1	NUT, M10 x 1.25
16	KRH1237	1	ELBOW,
17	KHH10740	1	350 mm
18	165951A1	2	CLAMP,
19	KSH1036	1	HOSE, LARGE,
20	150545A1	1	CLAMP,
21	150855A1	1	CLAMP,
22	KSH10080	1	SUPPORT,
23	166352A1	3	BOLT, M12 x 30
24	KSH1035	1	HOSE, LARGE,
25	150545A1	1	CLAMP,
26	150294A1	1	CLIP,

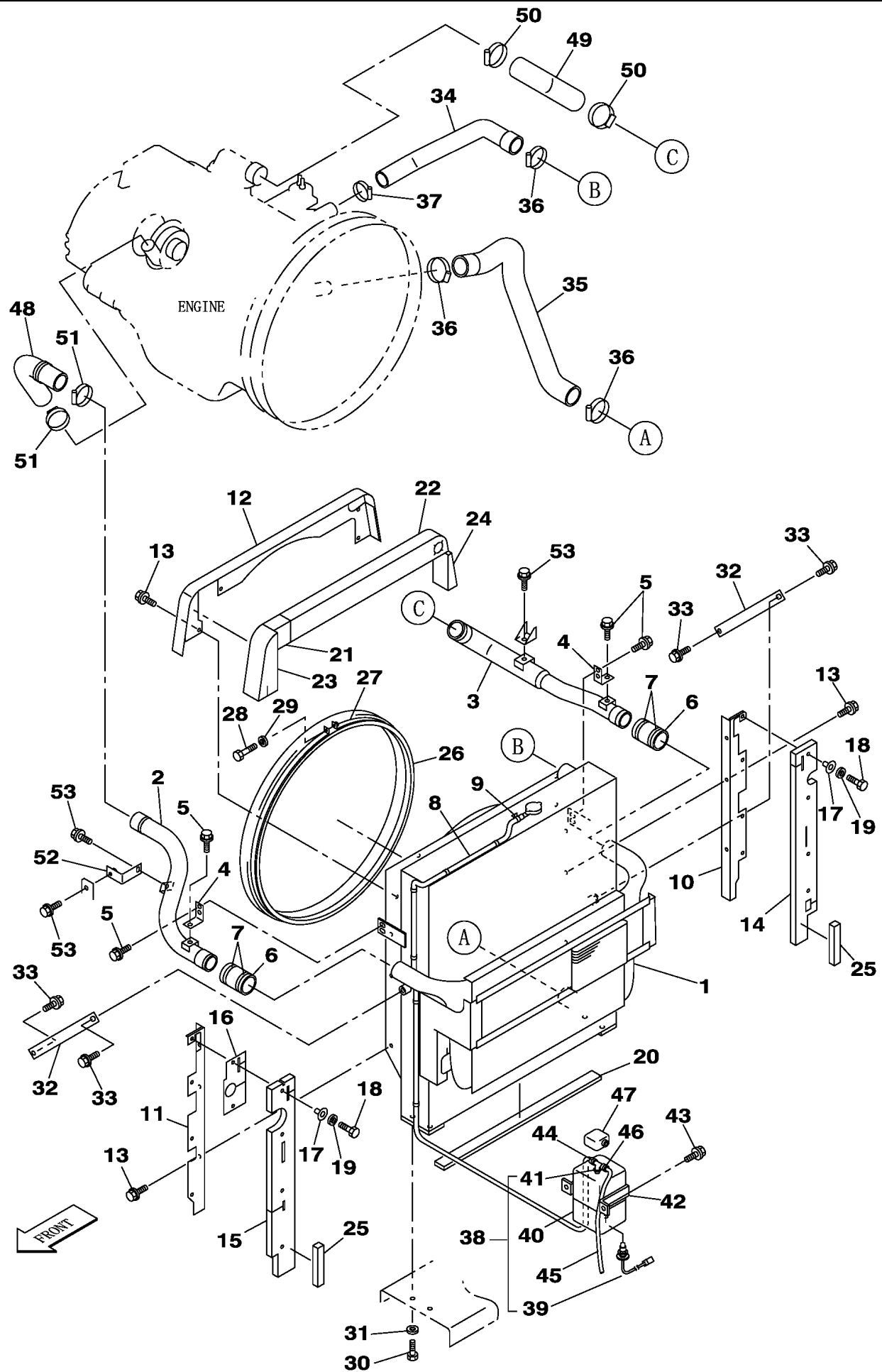
02-003-00(01) EXHAUST



02-003-00(01) EXHAUST

Ref	Part Number	Qty	Description
1	KSH0948	1	MUFFLER,
2	KSH1037	1	SUPPORT,
3	KBH0850	2	U-BOLT,
4	150472A1	8	NUT, N M10
5	827-10050	3	BOLT, Hex, M10 x 50, 10.9, M10 x 50
6	150409A1	3	WASHER, W M10
7	150668A1	1	TUBE,
8	165952A1	1	MOUNTING CLIP,
9	KSH1038	1	PIPE, EXHAUST SYSTEM,
10	153856A1	8	NUT, M10 x 1.25
11	KSH0951	1	COLLAR ASSY.,

02-004-00(01) ENGINE WATER CIRCUIT - RADIATOR

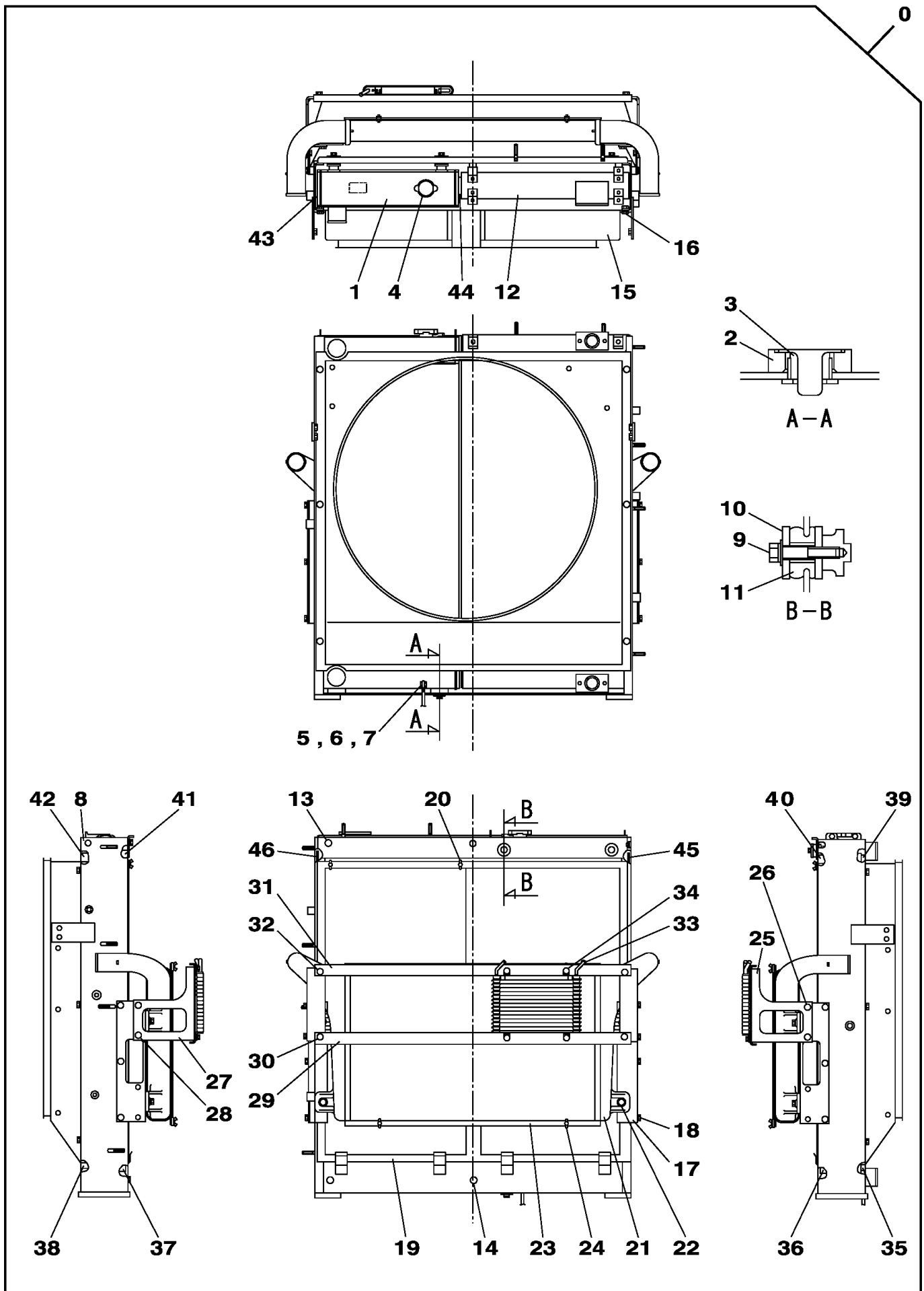


02-004-00(01) ENGINE WATER CIRCUIT - RADIATOR

Ref	Part Number	Qty	Description
1	KSH1028	1	RADIATOR, , See Page(s) 02-004-01 01
2	KSH1033	1	PIPE,
3	KSH1034	1	PIPE,
4	KSH1040	2	SUPPORT,
5	152718A1	6	BOLT,
6	KSH1065	2	AIR FLEXIBLE,
7	164967A1	4	CLAMP,
8	KHH0521	1	HOSE, FLEXIBLE, 2500 mm
9	165951A1	1	CLAMP,
10	KSH1044	1	SUPPORT,
11	KSH1042	1	SUPPORT,
12	KSH1043	1	SUPPORT,
13	152718A1	10	BOLT,
14	KSH1046	1	SEAL,
15	KSH1045	1	SEAL,
16	KSH1058	1	PLATE,
17	KHH0358	8	RETAINER,
18	827-8040	8	BOLT, Hex, M8 x 40, 10.9, M8 x 40
19	895-11008	8	WASHER, M8 x 16 x 1.6, W8
20	KSH1050	1	SEAL,
21	KSH1066	1	SEAL,
22	KSH1048	1	SEAL,
23	KSH1047	1	SEAL,
24	KSH1049	1	SEAL,
25	KSH1063	2	SEAL,
26	KTH0632	1	BAND,
27	KTH0633	1	BAND,
28	KRH1377	1	SCREW, M5 x 100
29	895-11005	1	WASHER, M5 x 10 x 1, W5
30	627-16030	4	BOLT, Hex, M16 x 30, 10.9, Full Thd, M16 x 30
31	150814A1	4	WASHER, W16
32	KSH1051	2	SUPPORT,
33	166373A1	4	BOLT, M16 x 40
34	KSH1029	1	HOSE, LARGE,
35	KSH1030	1	HOSE, LARGE,
36	165795A1	3	CLAMP,
37	165794A1	1	CLAMP,
38	160639A1	1	RESERVOIR, COOLANT EXPNSN, , Consists Of Ref. Numbers 39, 40, 41
39	161740A1	1	SWITCH,
40	161847A1	1	RESERVOIR, COOLANT EXPNSN,
41	161848A1	1	PLUG,
42	167542A1	1	HOLDER,
43	166351A1	2	BOLT, M10 x 20
44	165951A1	1	CLAMP,
45	157485A1	1	HOSE, 600 mm

02-004-00(01) ENGINE WATER CIRCUIT - RADIATOR

Ref	Part Number	Qty	Description
46	165952A1	1	MOUNTING CLIP,
47	157140A1	1	COVER,
48	KSH1031	1	HOSE, LARGE,
49	KSH1032	1	HOSE, LARGE,
50	164968A1	2	CLAMP,
51	164967A1	2	CLAMP,
52	KSH1041	1	SUPPORT,
53	152718A1	3	BOLT,



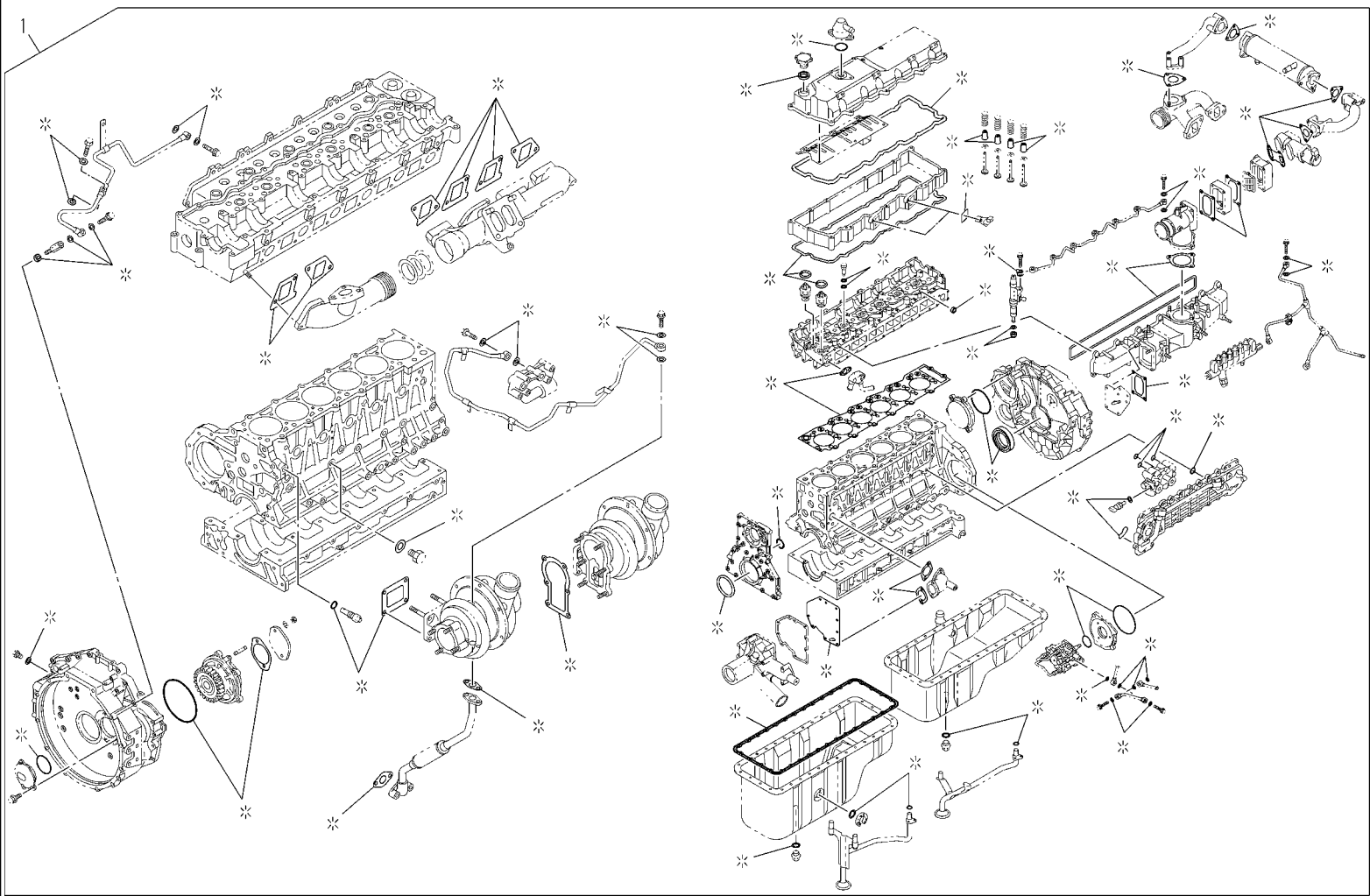
02-004-01(01) RADIATOR

Ref	Part Number	Qty	Description
0	KSH1028	1	RADIATOR, , Consists Of Ref. Number 1 To 46
1	LN001560	1	RADIATOR,
2	LG005610	2	STRIP-GASKET,
3	LG005620	2	STRIP-GASKET,
4	LR01142	1	CAP, RADIATOR,
5	156602A1	1	COCK,
6	LK005320	1	HOSE,
7	LA00804	1	CLIP,
8	LT001560	1	FRAME,
9	LA010480	2	BOLT, M10 x 1.5 x 50
10	LA010490	4	WASHER,
11	LG005630	2	STRIP-GASKET,
12	LN001570	1	COOLER, OIL,
13	LA010500	2	BOLT, M10 x 1.5 x 35
14	LA00781	2	SCREW, M12 x 1.75 x 25
15	LW004690	1	SHROUD,
16	158870A1	6	BOLT,
17	LS002860	2	BRACKET,
18	158870A1	6	BOLT,
19	LG005640	2	GRILLE, RADIATOR,
20	156606A1	4	BOLT, M6 x 1.0
21	LN001580	1	CONDENSER,
22	LA010500	4	BOLT, M10 x 1.5 x 35
23	LG005650	1	GRILLE, RADIATOR,
24	156606A1	4	BOLT, M6 x 1.0
25	LS002870	1	BRACKET,
26	LA00781	2	SCREW, M12 x 1.75 x 25
27	LS002880	1	BRACKET,
28	LA00781	2	SCREW, M12 x 1.75 x 25
29	LS002890	1	BRACKET,
30	158870A1	2	BOLT,
31	LS002900	1	BRACKET,
32	158870A1	2	BOLT,
33	LN001590	1	INTERCOOLER,
34	LA00677	4	BOLT,
35	NSS	1	NOT SERVICED SEPARATELY,
36	NSS	1	NOT SERVICED SEPARATELY,
37	NSS	1	NOT SERVICED SEPARATELY,
38	NSS	1	NOT SERVICED SEPARATELY,
39	NSS	1	NOT SERVICED SEPARATELY,
40	NSS	1	NOT SERVICED SEPARATELY,
41	NSS	1	NOT SERVICED SEPARATELY,
42	NSS	1	NOT SERVICED SEPARATELY,
43	NSS	2	NOT SERVICED SEPARATELY,
44	NSS	1	NOT SERVICED SEPARATELY,

02-004-01(01) RADIATOR

Ref	Part Number	Qty	Description
45	NSS	4	NOT SERVICED SEPARATELY,
46	NSS	2	NOT SERVICED SEPARATELY,

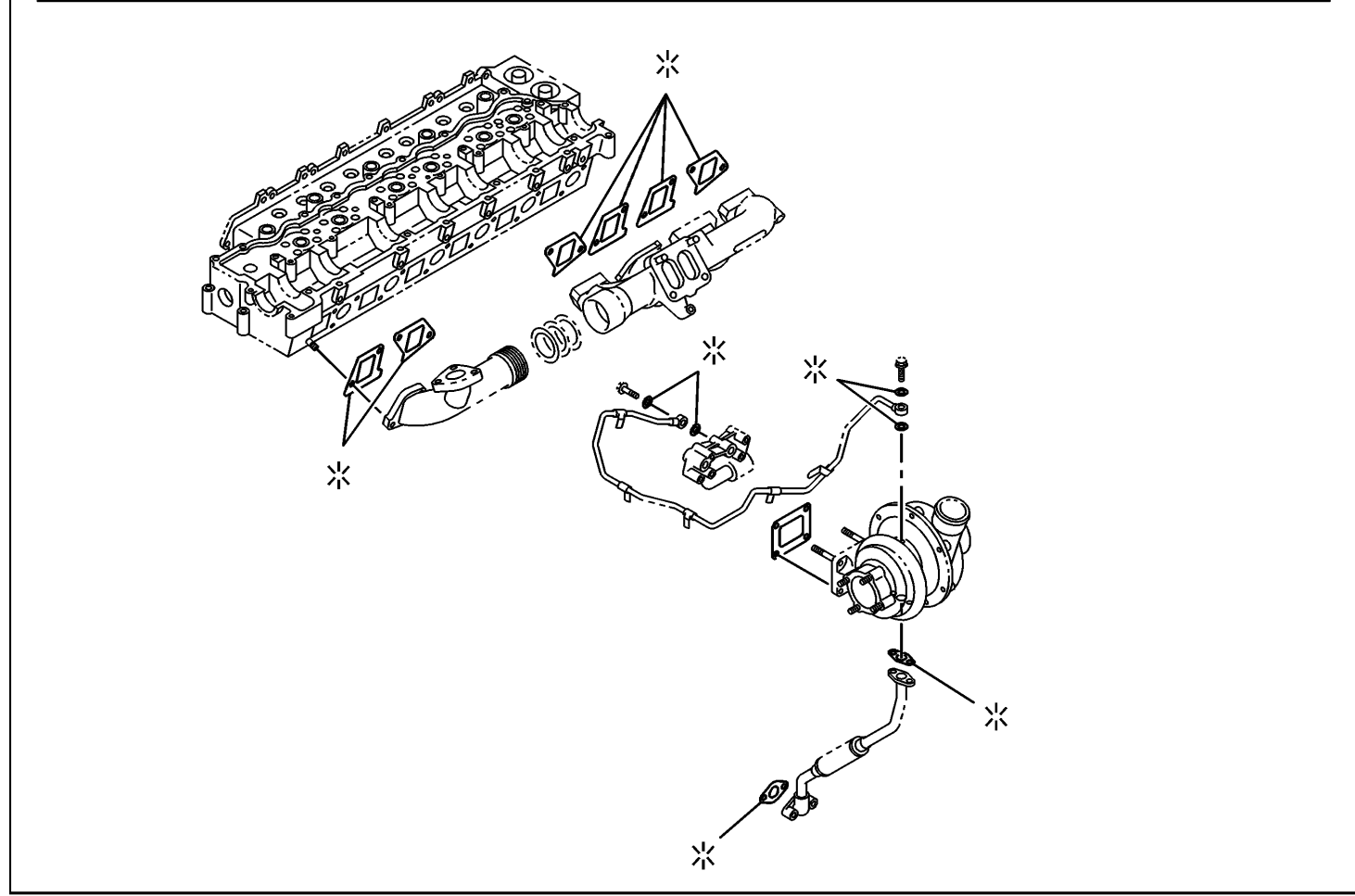
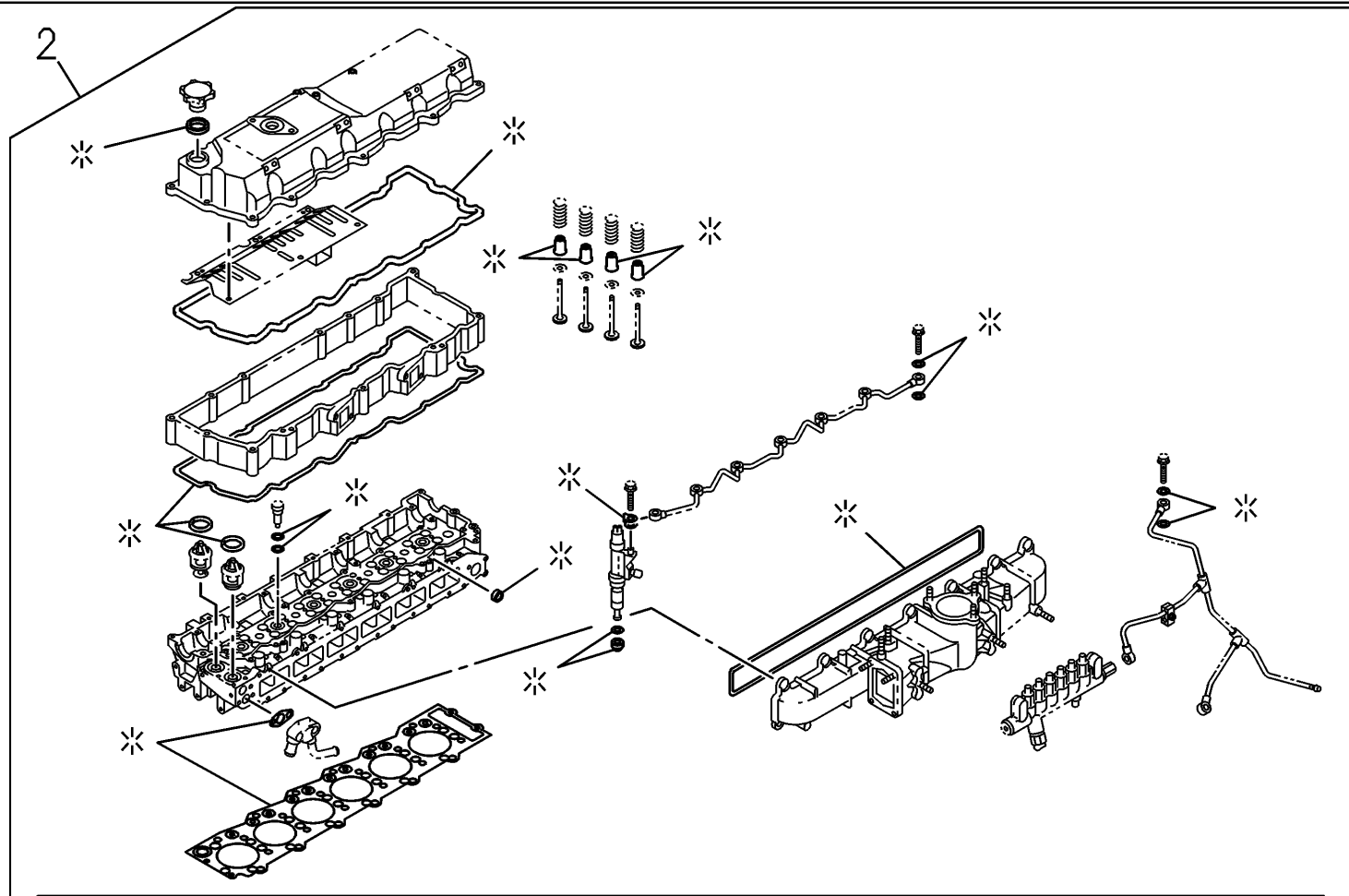
02-005-01(01) PACKAGE SEALS - ENGINE



02-005-01(01) PACKAGE SEALS - ENGINE

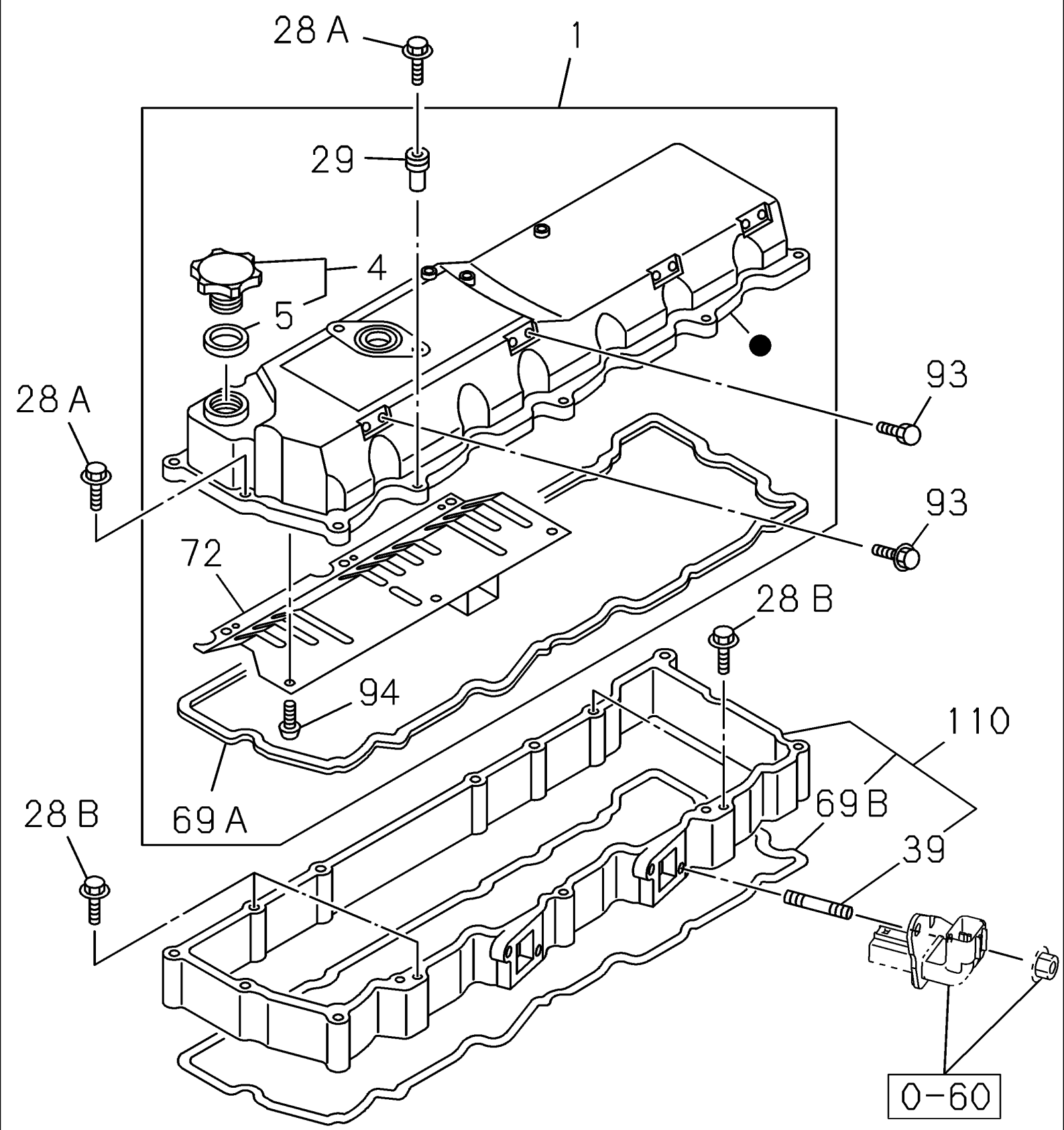
Ref	Part Number	Qty	Description
1	87336450	1	KIT, SEALS,

02-005-03(01) PACKAGE SEALS - ENGINE



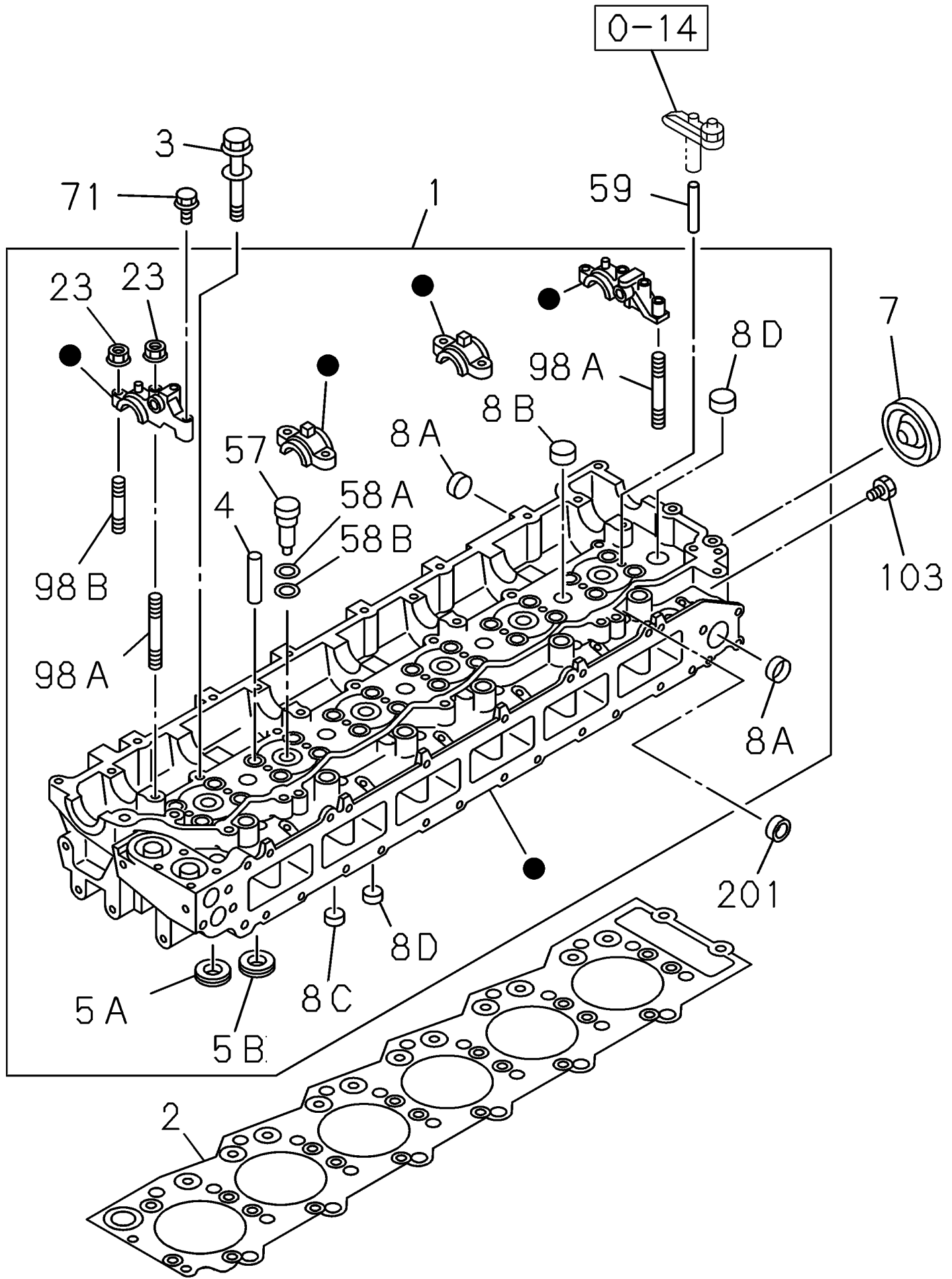
02-005-03(01) PACKAGE SEALS - ENGINE

Ref	Part Number	Qty	Description
1	87377902	1	KIT, ENGINE TOP GASKETS,



02-010-01(01) COVER - CYLINDER HEAD

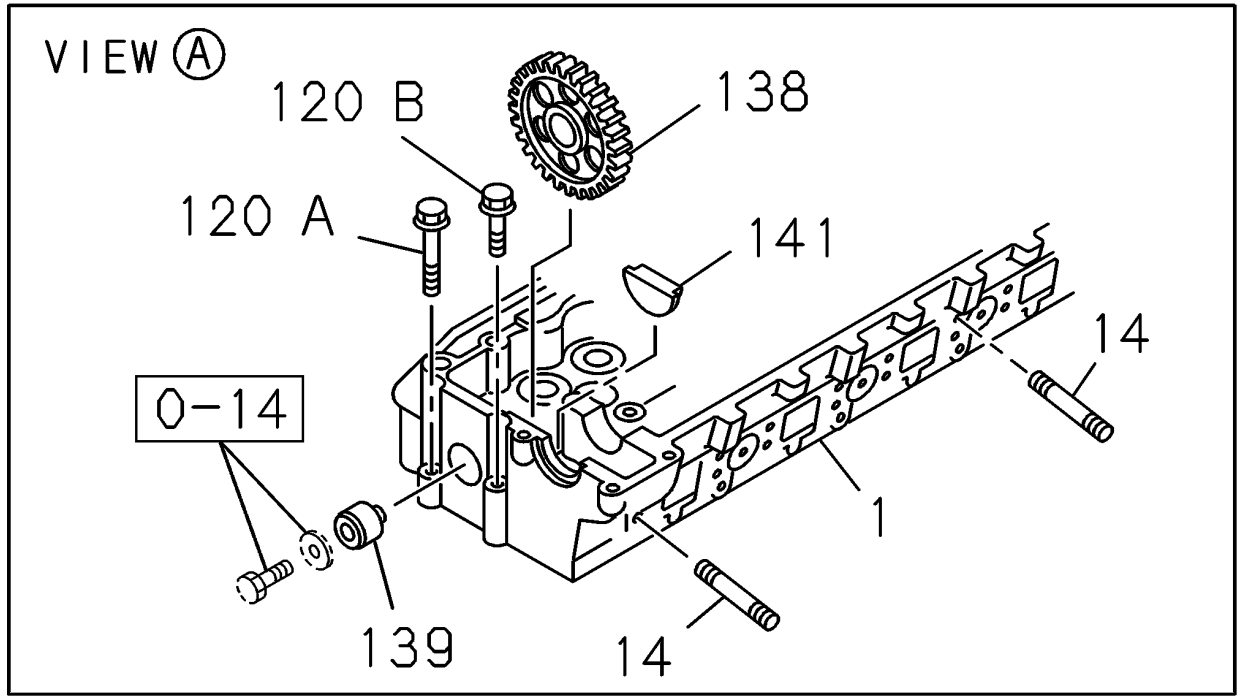
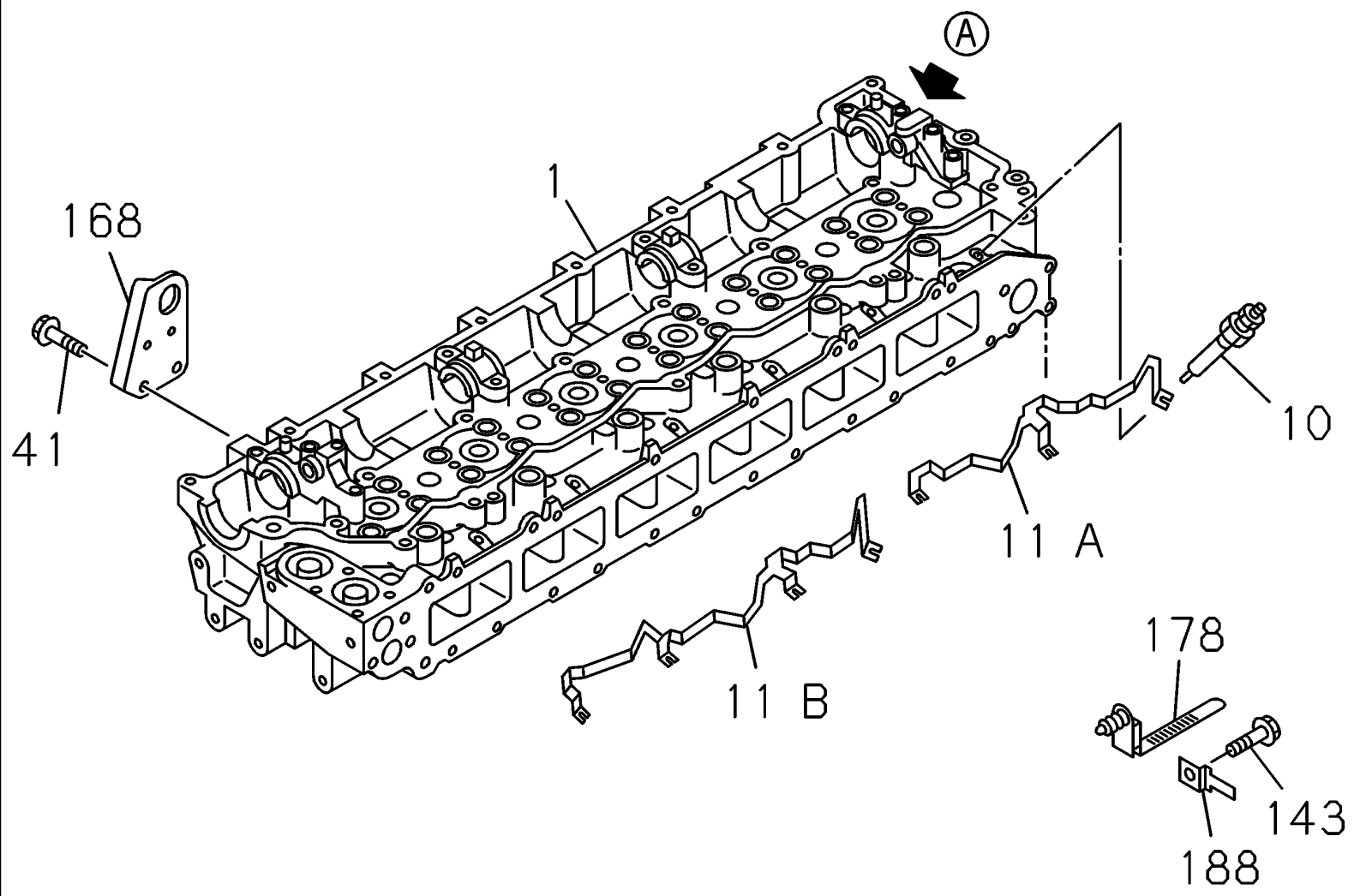
Ref	Part Number	Qty	Description
0-60	REF	1	INSTRUCTION, , See Page(s) 04-060-03 01
1	87377904	1	COVER, VALVE, , Consists Of Ref. Numbers 4, 29, 69A, 72, 94
4	288798A1	1	CAP, FILLER, , Include Of Ref. Number 5
5	288797A1	1	GASKET,
28A	288987A1	11	BOLT, M8 x 70
28B	288985A1	4	BOLT, M8 x 45
29	87379444	11	MOUNTING, RUBBER,
39	438130A1	4	STUD, M8 x 38
69A	438052A1	1	GASKET,
69B	87377907	1	GASKET,
72	438070A1	1	PLATE,
93	288983A1	8	BOLT, M8 x 12
94	438179A1	6	SCREW,
110	87377915	1	COVER, VALVE, , Include Of Ref. Numbers 39, 69B



02-011-01(01) CYLINDER HEAD

Ref	Part Number	Qty	Description
0-14	REF	1	INSTRUCTION, , See Page(s) 02-014-01 01
1	87377918	1	CYLINDER HEAD, , Consists Of Ref. Numbers 4, 5A, 5B, 8A, 8B, 8C, 8D, 23, 57, 58A, 58B, 98A, 98B
2	87377923	1	GASKET, CYLINDER HEAD,
3	438124A1	26	SCREW,
4	438044A1	24	GUIDE,
5A	438119A1	12	SEAT, VALVE, Inlet
5B	87379445	12	SEAT, Exhaust
7	87379446	1	PLUG,
8A	362152A1	7	CUP,
8B	289076A1	6	CUP,
8C	353962A1	7	PLUG,
8D	289852A1	11	CUP,
23	288709A1	8	NUT,
57	87377924	6	HOLDER NOZZLE, M10 x 20
58A	87377928	6	GASKET,
58B	87377929	6	GASKET,
59	87379448	12	GUIDE,
71	419941A1	2	BOLT,
98A	438025A1	2	STUD, M8 x 54 L=79
98B	438026A1	6	STUD, M8 x 41 L=66
103	87377930	1	PLUG,
201	437881A1	6	GASKET,

02-011-02(01) CYLINDER HEAD



02-011-02(01) CYLINDER HEAD

Ref	Part Number	Qty	Description
0-14	REF	1	INSTRUCTION, , See Page(s) 02-014-01 01
1	87377918	1	CYLINDER HEAD, , See Page(s) 02-010-01 01
10	438043A1	6	PLUG,
11A	438062A1	1	CONNECTOR,
11B	438075A1	1	CONNECTOR,
14	438137A1	12	STUD,
41	288993A1	2	SCREW, M10 x 20
120A	438152A1	1	SCREW, M10 x 73
120B	438153A1	1	SCREW, M10 x 43
138	438163A1	1	GEAR, Z=41
139	438166A1	1	SHAFT,
141	438154A1	2	PLUG,
143	419935A1	1	BOLT, M8 x 16
168	87379450	1	HANGER,
178	87379451	1	CLIP,
188	87377931	1	BRACKET,



Suggest:

If the above button click is invalid.

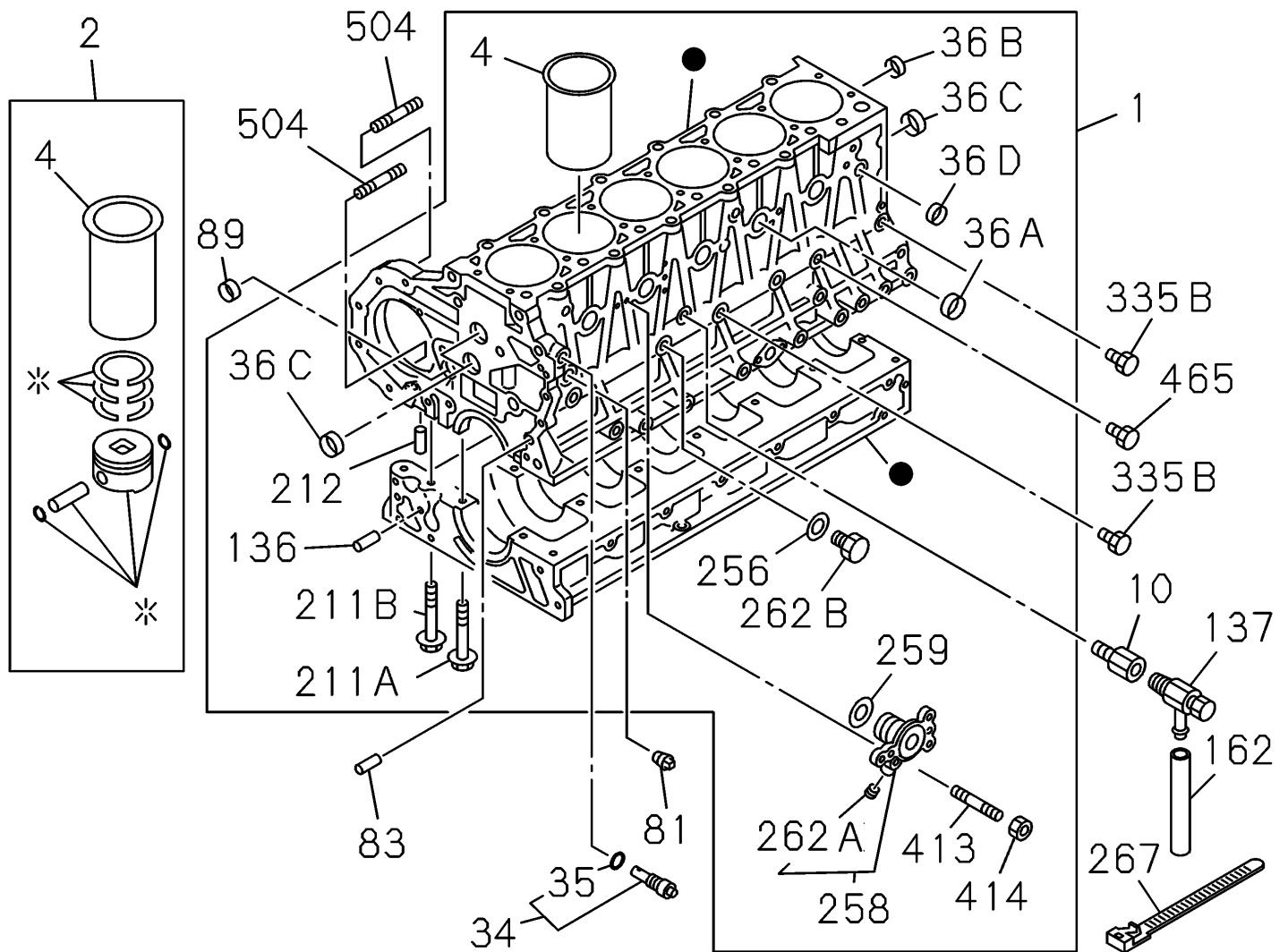
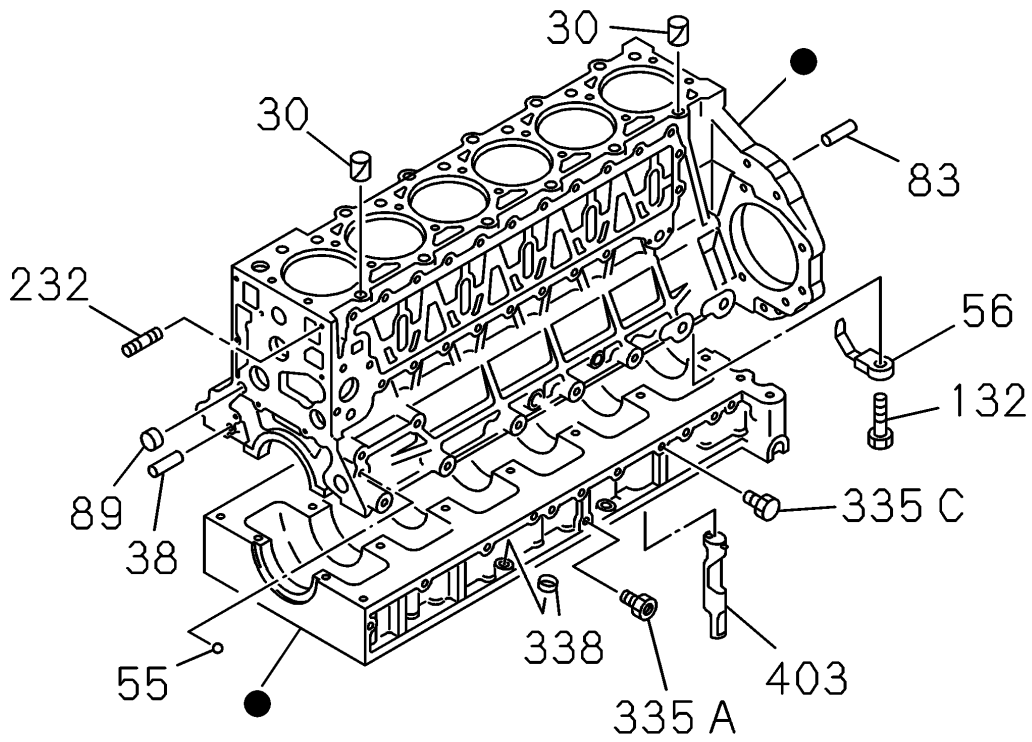
Please download this document

first, and then click the above link

to download the complete manual.

Thank you so much for reading

02-012-01(01) CYLINDER BLOCK



<https://www.ebooklibonline.com>

Hello dear friend!

Thank you very much for reading.

Enter the link into your browser.

The full manual is available for immediate download.

<https://www.ebooklibonline.com>