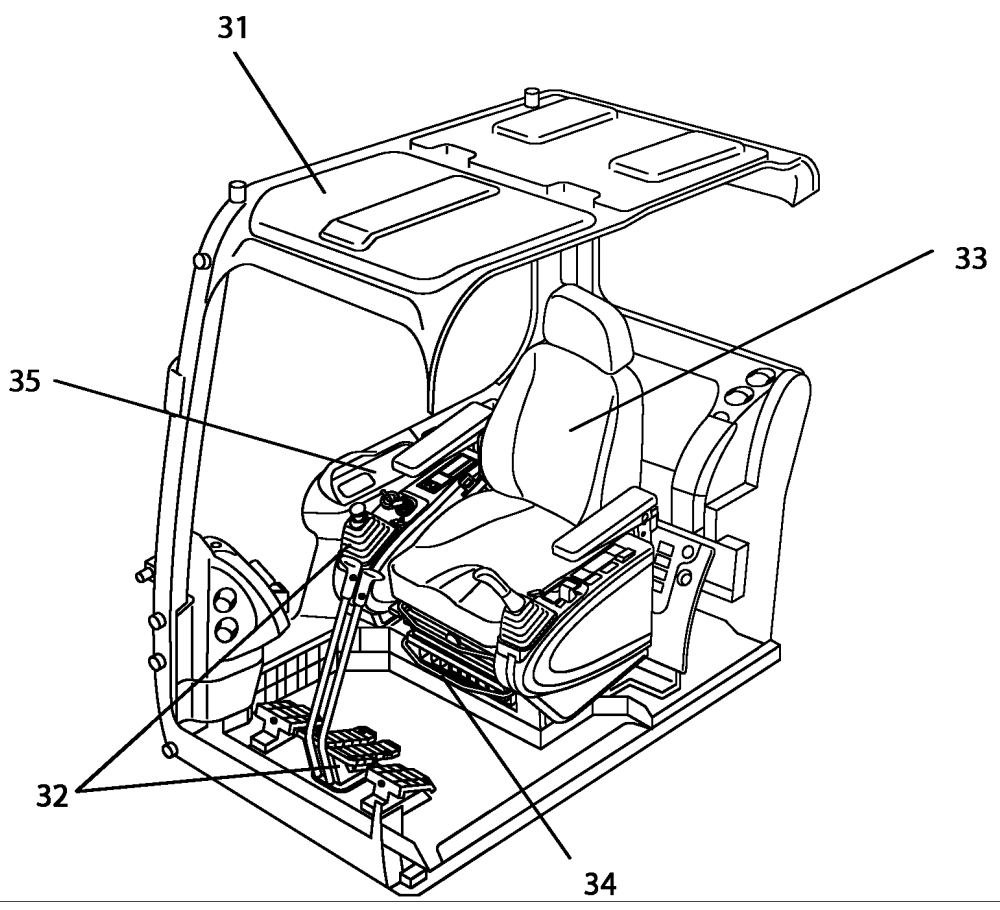
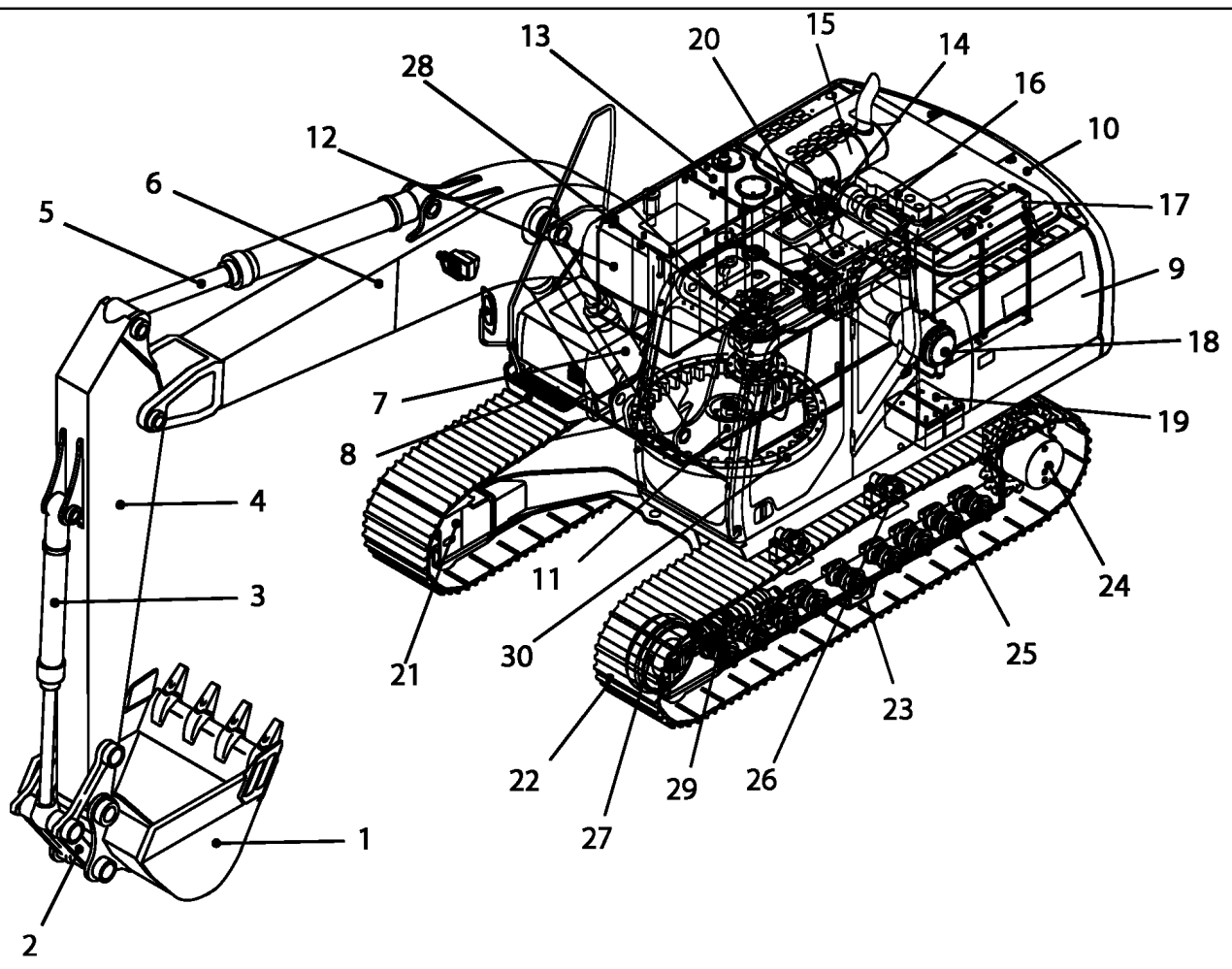




# PARTS CATALOGUE

CRAWLER EXCAVATOR  
CX240B



## CX240B CASE CRAWLER EXCAVATOR TIER III (EUROPE) (1/07- )

## 00-001-00(01) COMPONENT INDEX

Ref	Part Number	Qty	Description
1		1	BUCKET - See Figure(s) 09-310-00 01 - 09-322-00 01
2		1	BUCKET CONTROL - See Figure(s) 09-300-00 01
3		1	BUCKET CYLINDER - See Figure(s) 08-021-00 01, 08-303-00 01
4		1	DIPPER - See Figure(s) 09-202-00 01
5		1	DIPPER CYLINDER - See Figures 08-017-00 01, 08-018-00 01, 08-302-00 1, 08-302-01 01
6		1	MONOBLOCK BOOM - See Figure(s) 09-100-00 01
7		1	BOOM CYLINDER - See Figure(s) 08-013-00 01 - 08-015-00 01, 08-300-00 01 - 08-301-01 01
8		1	UPPERSTRUCTURE CHASSIS - See Figure(s) 09-002-00 01, 09-003-00 01
9		1	COWLING - See Figure(s) 09-005-00 01 - 09-008-00 01
10		1	COUNTERWEIGHT - See Figure(s) 09-004-00 01
11		1	SWING JOINT - See Figure(s) 07-010-00 01
12		1	FUEL TANK, FUEL SYSTEM - See Figure(s) 03-001-00 01 - 03-086-01 01
13		1	HYDRAULIC RESERVOIR, HYDRAULIC SYSTEM - See Figure(s) 08-001-00 01, 08-004-00 01 To 08-067-00 01
14		1	HYDRAULIC PUMP - See Figure(s) 08-002-00 01, 08-002-01 01
15		1	EXHAUST ENGINE - See Figure(s) 02-003-00 01
16		1	ENGINE - See Figure(s) 02-001-00 01, 02-005-01 01 - 02-286-01 01
17		1	RADIATOR - See Figure(s) 02-004-00 01, 02-004-01 01
18		1	AIR FILTRATION - See Figure(s) 02-002-00 01
19		1	BATTERIES, ELECTRICAL SYSTEM - See Figure(s) 04-001-00 01 - 04-815-01 01
20		1	CONTROL VALVE - See Figure(s) 08-200-00 01 - 08-212-00 01
21		1	UNDERCARRIAGE, HYDRAULIC CIRCUIT For CX240B LC - See Figure(s) 05-001-00 01, 07-001-00 01
21		1	UNDERCARRIAGE, HYDRAULIC CIRCUIT For CX240B NLC - See Figure(s) 05-001-01 01, 07-001-01 01
22		1	TRACK FOOT STEP - See Figure(s) 05-006-00 01 - 05-009-00 01
23		1	GUIDE, CHAIN - See Figure(s) 05-011-00 01, 05-011-01 01
24		1	TRAVEL MOTOR AND REDUCTIONGEAR - See Figure(s) 06-001-00 01, 06-010-00 01, 07-011-00 01 07-012-00 01
25		1	ROLLER LOWER - See Figure(s) 05-003-00 01
26		1	ROLLER UPPER - See Figure(s) 05-002-00 01
27		1	GUIDE PULLEY - See Figure(s) 05-004-00 01
28		1	SWING MOTOR-DRIVE REDUCTION GEAR - See Figure(s) 06-002-00 01, 06-011-00 01, 08-220-00 01
29		1	TENSION DAMPER - See Figure(s) 05-005-00 01
30		1	SWING COMPONENTS, LUBRICATION CIRCUIT - See Figure(s) 09-001-00 01
31		1	OPERATORS COMPARTMENT, CAB - See Figure(s) 09-029-00 01 - 09-032-00 01
32		1	OPERATORS COMPARTMENT, LEVER, CONTROL - See Figure(s) 09-009-00 01
33		1	OPERATORS COMPARTMENT - SEAT AND CONTROL ARM MOUNTING - See Figure(s) 09-017-00 01 - 09-023-00 01
34		1	CAB AIR CONDITIONING - See Figure(s) 09-025-00 01 - 09-028-00 01
35		1	SIDE INSTRUMENT PANEL - See Figure(s) 09-029-00 01

**<https://www.ebooklibonline.com>**

Hello dear friend!

Thank you very much for reading.

Enter the link into your browser.

The full manual is available for immediate download.

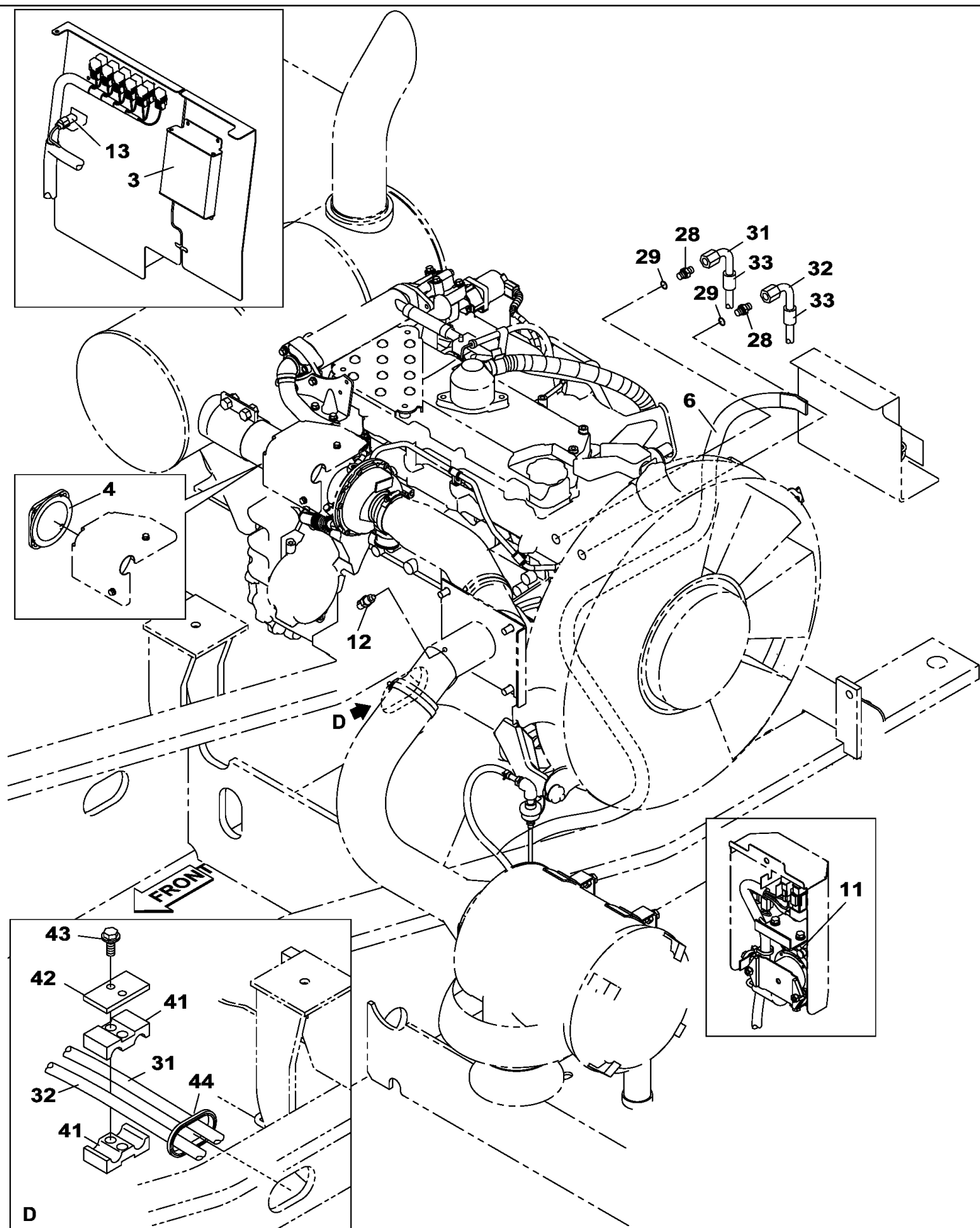
**<https://www.ebooklibonline.com>**



## CX240B CASE CRAWLER EXCAVATOR TIER III (EUROPE) (1/07- )

## 02-001-00(01) ENGINE MOUNTING - ENGINE - OIL CIRCUIT

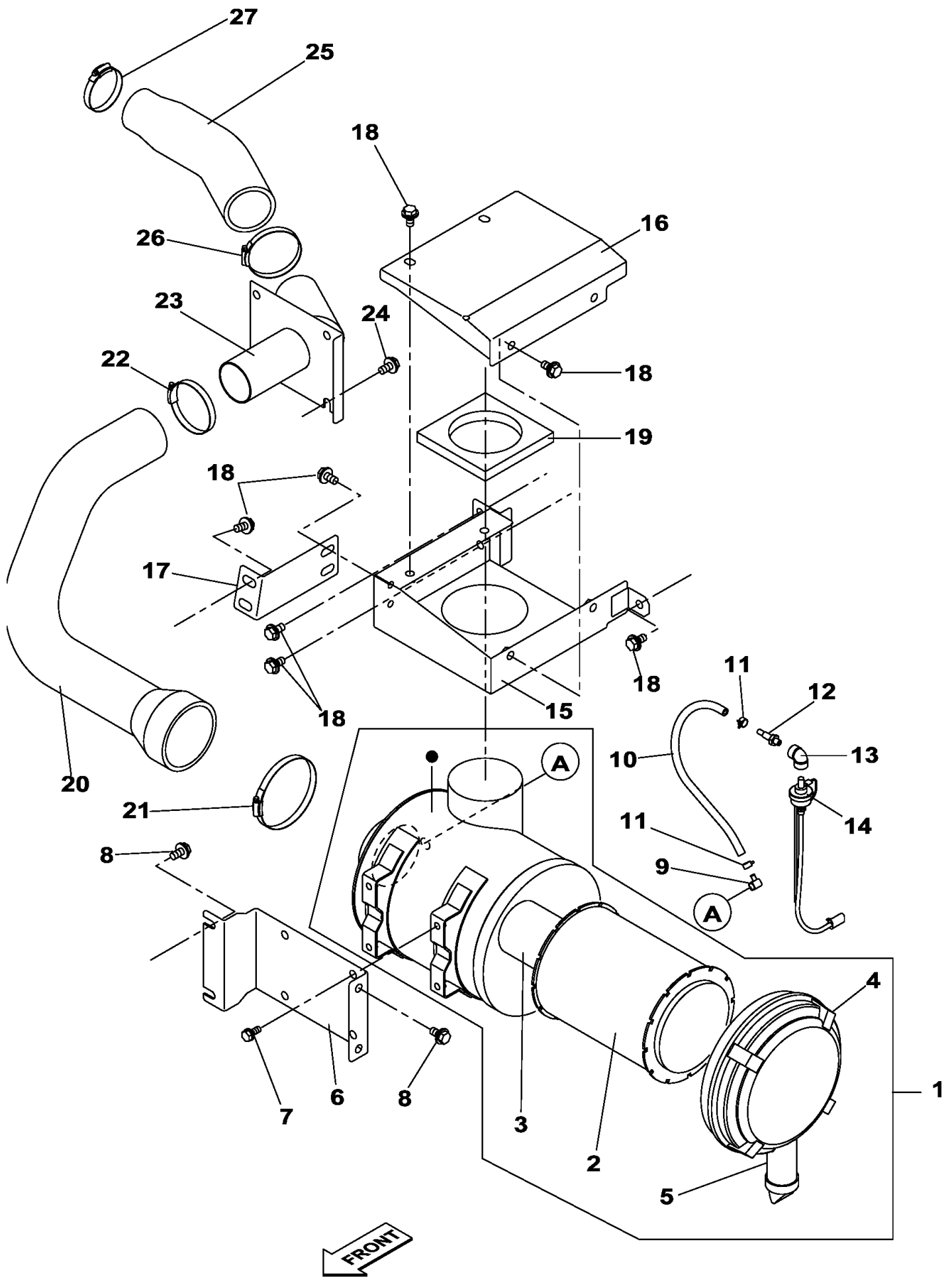
Ref	Part Number	Qty	Description
2	KBH10790	1	ENGINE, , See Figure(s) 02-001-01 01
5	REF	1	INSTRUCTION, Belt, See Figure(s) 02-033-01 01, Ref. 36
7	REF	1	INSTRUCTION, Oil Filter, See Figure(s) 02-050 01 01, Ref. 496
9	REF	1	INSTRUCTION, Fuel Filter, See Figure(s) 03-041-01 01, Ref. 1A
14	KRH10990	1	SUPPORT,
15	166347A1	4	BOLT, M10 x 30
16	KRH11000	1	SUPPORT,
17	627-10035	5	BOLT, Hex, M10 x 35, 10.9, Full Thd, M10 x 35; 10.9
18	150409A1	5	WASHER,
19	KRH10130	1	SUPPORT,
20	KRH10140	1	SUPPORT,
21	166373A1	8	BOLT, M16 x 40
22	KRH10870	4	SILENTBLOC,
23	KRH10860	4	SILENTBLOC,
24	KRH10190	4	PLATE,
25	827-16130	4	BOLT, Hex, M16 x 130, 10.9, M16 x 130; 10.9
26	150814A1	4	WASHER,
27	KRH1251	4	NUT,
34	157580A1	2	ELBOW, 90°, 3/4" O-Ring x 3/4", , Include(s) 35
35	154503A1	1	O-RING,
36	152012A1	1	CONNECTOR, , Include(s) 37
37	154503A1	1	O-RING,
38	102R008Y110R	2	BOLT, M8 x 110
39	KHH0515	2	BOLT, M8 x 140
40	153081A1	4	WASHER,
45	KRH11050	1	STEP,
46	827-8070	2	BOLT, Hex, M8 x 70, 10.9, M8 x 70; 10.9
47	827-8040	1	BOLT, Hex, M8 x 40, 10.9, M8 x 40; 10.9
48	153081A1	3	WASHER,



## CX240B CASE CRAWLER EXCAVATOR TIER III (EUROPE) (1/07- )

## 02-001-01(01) ENGINE MOUNTING - ENGINE - OIL CIRCUIT

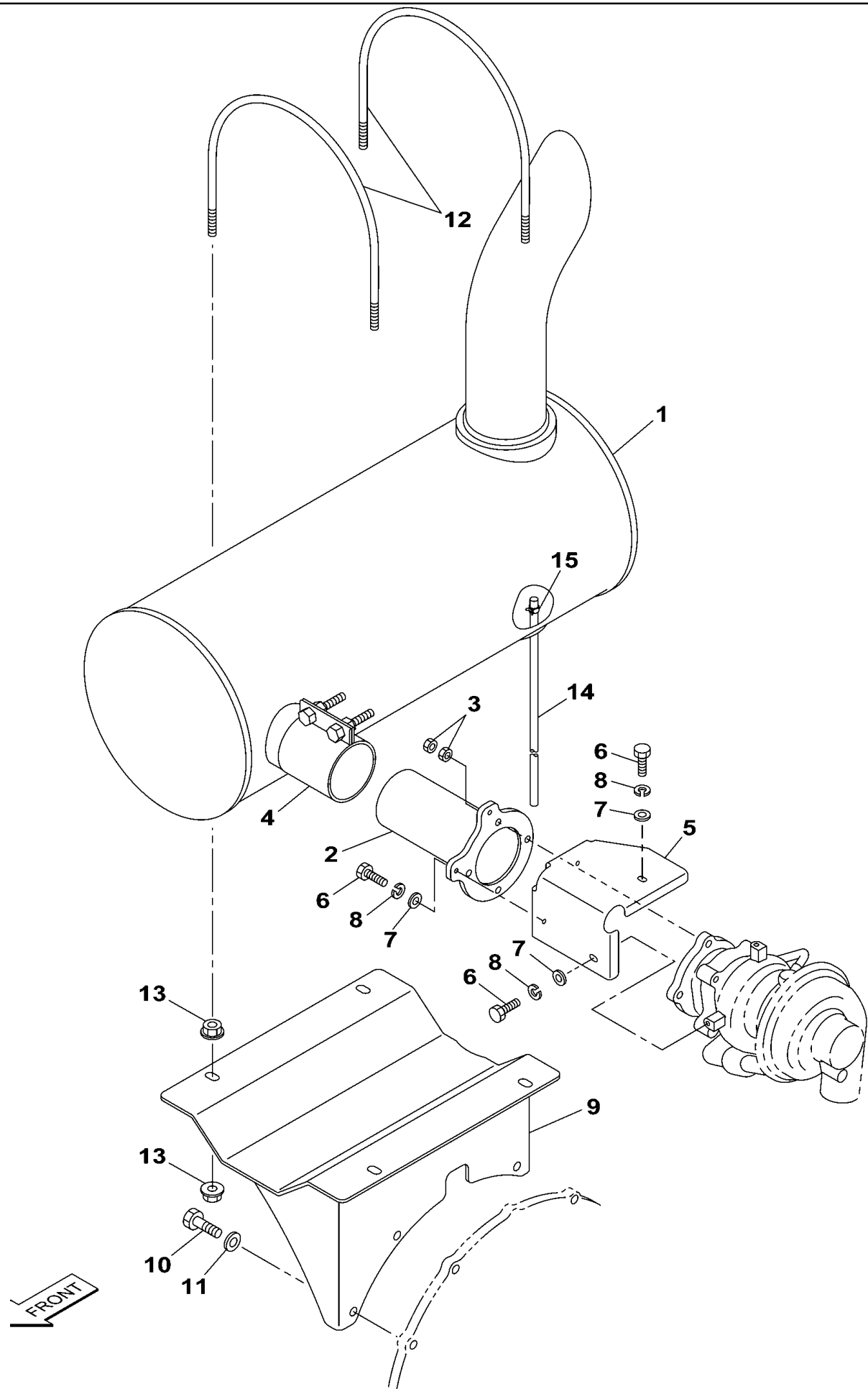
Ref	Part Number	Qty	Description
3	REF	1	INSTRUCTION,
4	KRH10570	1	GASKET,
6	REF	1	INSTRUCTION,
11	REF	1	INSTRUCTION,
12	REF	1	INSTRUCTION,
13	REF	1	INSTRUCTION,
28	151654A1	2	ADAPTER, 3/4" NPT O-Ring x 3/4" NPT, , Include(s) 29
29	154503A1	1	O-RING,
31	KRH11090	1	HOSE ASSY., 1220 mm
32	KRH10330	1	HOSE ASSY., 1350 mm
33	KBR0819	2	SHEATH, FLEXIBLE,
41	KRH10200	2	CLAMP,
42	KRH10210	1	PLATE,
43	166347A1	2	BOLT,
44	MMA1011	1	SEAL PROTECTION,



## CX240B CASE CRAWLER EXCAVATOR TIER III (EUROPE) (1/07- )

## 02-002-00(01) AIR FILTRATION

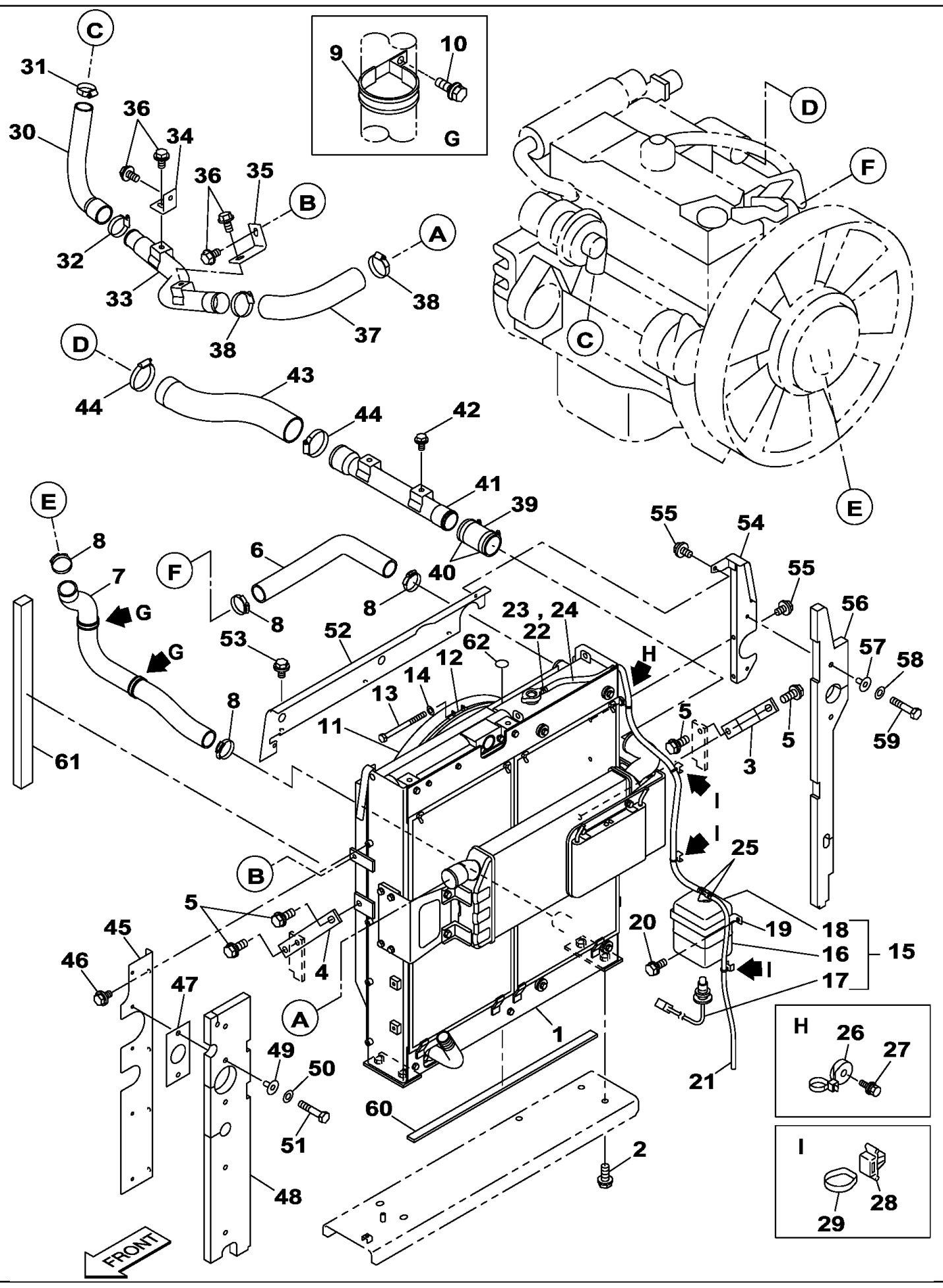
Ref	Part Number	Qty	Description
1	KRH10050	1	FILTER ASSY., , Include(s) 2 - 5
2	KBH0921	1	FILTER, AIR,
3	KBH0922	1	FILTER, AIR,
4	KBH0923	1	COVER ASSY,
5	KBH0924	1	VALVE,
6	KRH11940	1	SUPPORT,
7	166052A1	4	BOLT, M10 x 25
8	152718A1	4	BOLT,
9	KRH1237	1	ELBOW,
10	157777A1	1	HOSE, 400 mm
11	165951A1	2	CLAMP,
12	KRH1236	1	SEAL,
13	165818A1	1	ELBOW,
14	KHH10330	1	SENSOR,
15	KRN14720	1	COVER,
16	KRN14730	1	COVER,
17	KRN14710	1	SUPPORT,
18	152718A1	11	BOLT,
19	KRH1570	1	SEAL,
20	KRH11980	1	HOSE,
21	150545A1	1	CLAMP,
22	150902A1	1	CLAMP,
23	KRH11930	1	SUPPORT,
24	152178A1	4	BUSHING,
25	152178A1	1	BUSHING,
26	150902A1	1	CLAMP,
27	150736A1	1	CLAMP,



## CX240B CASE CRAWLER EXCAVATOR TIER III (EUROPE) (1/07- )

## 02-003-00(01) EXHAUST

Ref	Part Number	Qty	Description
1	KRH10880	1	MUFFLER,
2	KRH10160	1	PIPE, EXHAUST SYSTEM,
3	829-1408	8	NUT, M8, CI 10,
4	KSH0951	1	COLLAR ASSY.,
5	KRH10930	1	COVER,
6	102R006A016N	4	BOLT, M6 x 16
7	182-006AN	4	WASHER,
8	183-106AN	4	SPRING-DISC,
9	KRH10150	1	SUPPORT,
10	627-10035	3	BOLT, Hex, M10 x 35, 10.9, Full Thd, M10 x 35; 10.9
11	150409A1	3	WASHER,
12	KHH11400	2	U-BOLT,
13	KHH11440	8	NUT, M10
14	150657A1	1	TUBE, 850 mm
15	165952A1	1	MOUNTING CLIP,



## CX240B CASE CRAWLER EXCAVATOR TIER III (EUROPE) (1/07- )

## 02-004-00(01) ENGINE WATER CIRCUIT - RADIATOR

Ref	Part Number	Qty	Description
1	KBH10800	1	RADIATOR, , See Figure(s) 04-004-01 01
2	166373A1	4	BOLT, M16 x 40
3	KRH11070	1	STAY,
4	KRH11080	1	STAY,
5	166373A1	4	BOLT, M16 x 40
6	KBH10820	1	HOSE, LARGE,
7	KRH11100	1	HOSE, LARGE,
8	165794A1	4	CLAMP,
9	KRH10460	2	CLIP, HOSE,
10	KHJ1215	2	SCREW,
11	KBH0935	1	RUBBER BAND,
12	KBH0936	1	BAND,
13	KRH1377	1	SCREW, M5 x 100
14	895-11005	1	WASHER, M5 x 10 x 1,
15	KHH10840	1	RESERVOIR, COOLANT EXPNSN, , Include(s) 16 - 18
16	150026A1	1	TANK,
17	161740A1	1	SWITCH,
18	KHH10860	1	PLASTIC PLUG,
19	KRH1270	1	HOLDER,
20	166052A1	2	BOLT, M10 x 25
21	KHH0398	1	HOSE, 650 mm
22	165951A1	1	CLAMP,
23	KHH0389	1	HOSE, LARGE,
24	KBR0665	1	TUBE, PLASTIC-RUBBER, 1000 mm
25	165951A1	2	CLAMP,
26	KHR2584	1	CLAMP, M8
27	KHJ1215	1	SCREW, M8 x 25
28	KHR10220	3	MOUNTING CLIP,
29	150496A1	3	STRAP, 250 mm
30	KRH11040	1	HOSE, LARGE,
31	164966A1	1	CLIP, HOSE,
32	164967A1	1	CLAMP,
33	KRH11030	1	PIPE, SUCTION,
34	KRH10380	1	SUPPORT,
35	KRH10390	1	SUPPORT,
36	152718A1	4	BOLT,
37	KRH10290	1	HOSE, LARGE,
38	164967A1	2	CLAMP,
39	KSH1065	1	AIR FLEXIBLE,
40	164967A1	2	CLAMP,
41	KRH10320	1	PIPE, SUCTION,
42	152718A1	2	BOLT,
43	KRH10300	1	HOSE, LARGE,
44	KHH0411	2	CLAMP,
45	KRH11140	1	SUPPORT,

## CX240B CASE CRAWLER EXCAVATOR TIER III (EUROPE) (1/07- )

## 02-004-00(01) ENGINE WATER CIRCUIT - RADIATOR

Ref	Part Number	Qty	Description
46	166345A1	4	BOLT, M8 x 16
47	KBH0929	1	RUBBER,
48	KRH11150	1	GASKET,
49	KHH0358	5	RETAINER,
50	895-11008	5	WASHER, M8 x 16 x 1.6,
51	827-8040	5	BOLT, Hex, M8 x 40, 10.9,
52	KBH10830	1	SUPPORT,
53	166345A1	4	BOLT, M8 x 16
54	KBH10840	1	SUPPORT,
55	166345A1	3	BOLT, M8 x 16
56	KBH10850	1	GASKET,
57	KHH0358	2	RETAINER,
58	895-11008	2	WASHER, M8 x 16 x 1.6,
59	827-8040	2	BOLT, Hex, M8 x 40, 10.9,
60	KRH10450	1	GASKET,
61	KRH10590	1	GASKET,
62	162468A1	1	DECAL,



## CX240B CASE CRAWLER EXCAVATOR TIER III (EUROPE) (1/07- )

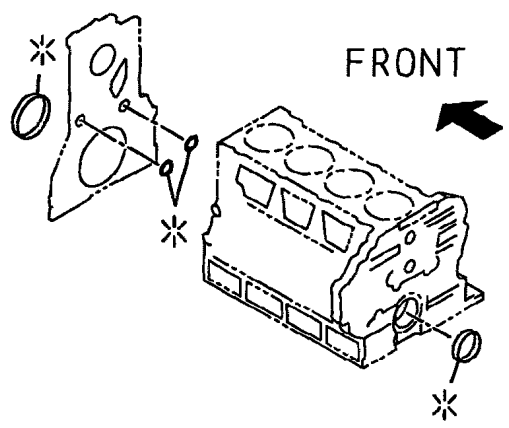
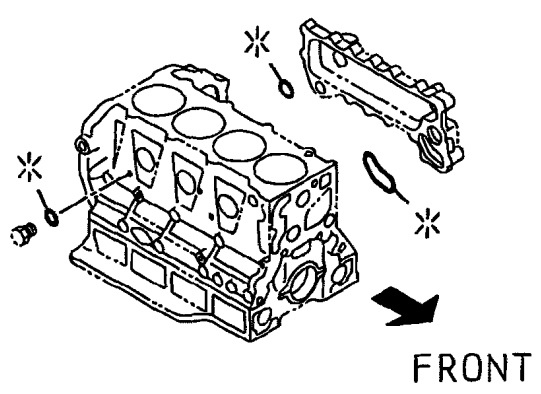
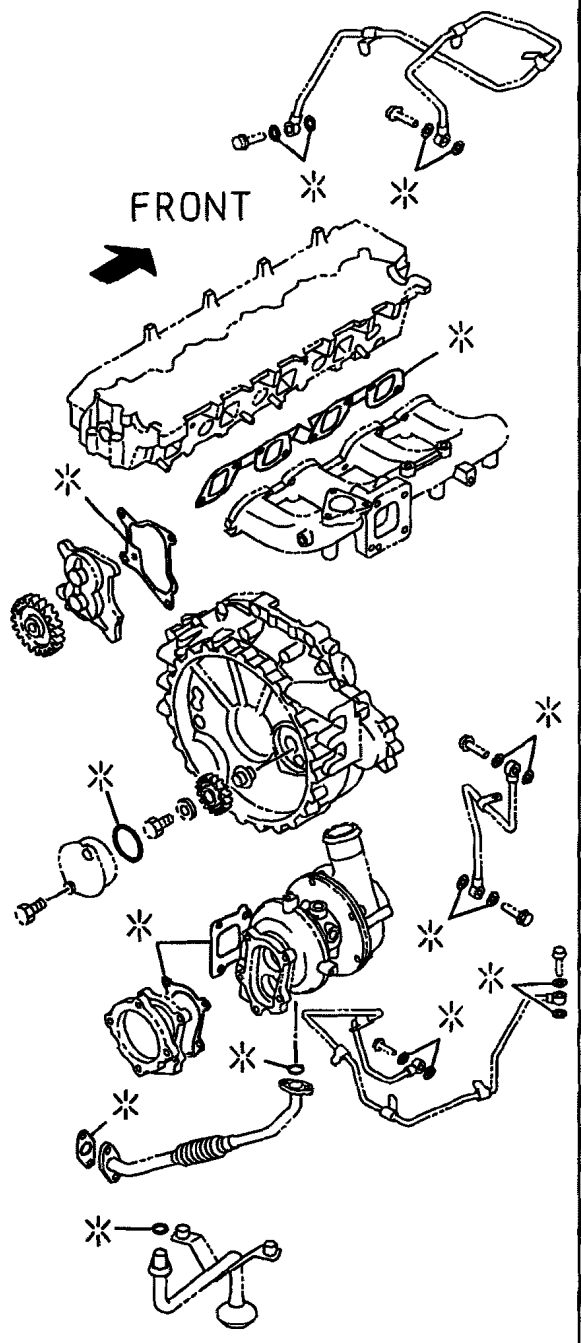
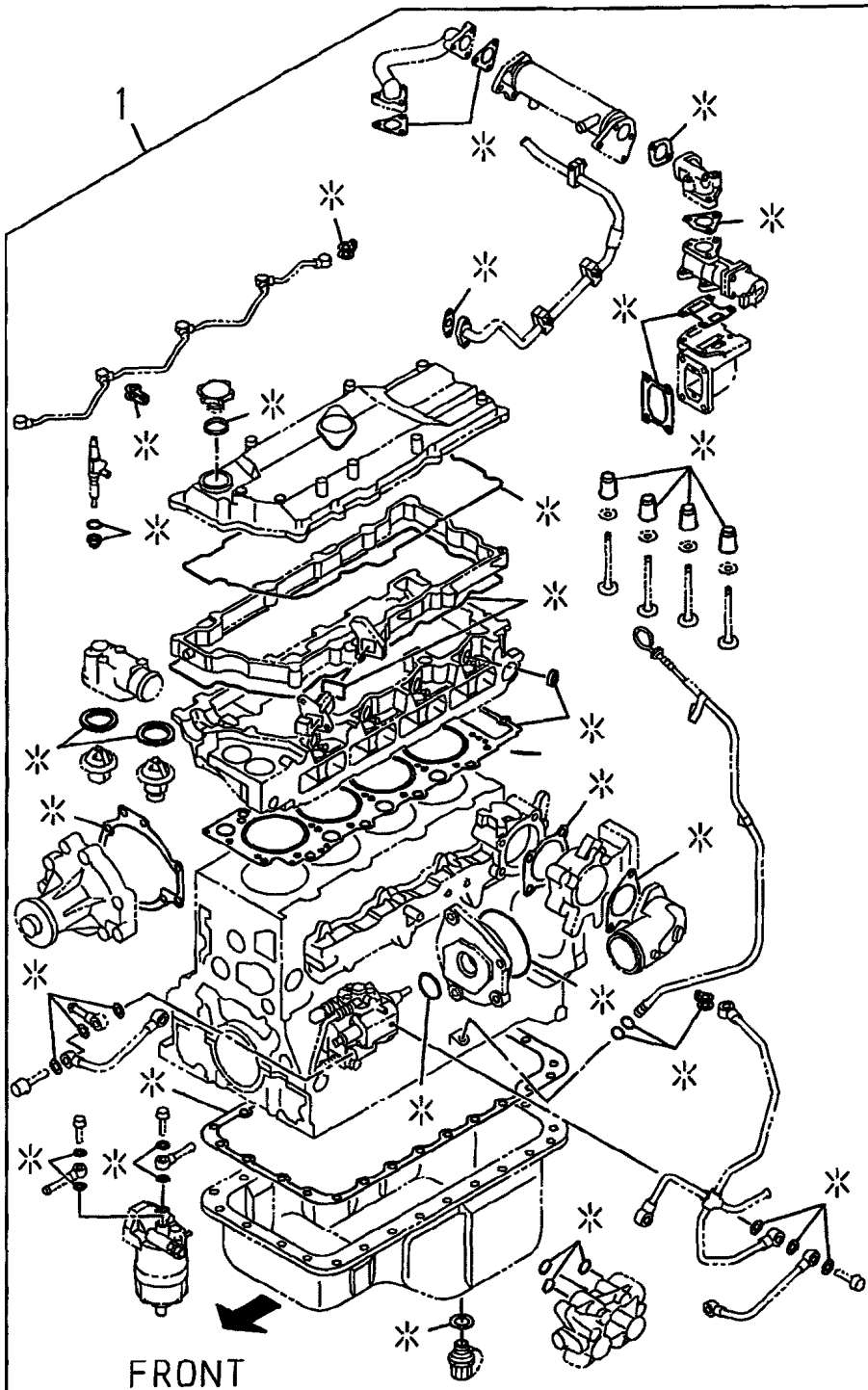
## 02-004-01(01) RADIATOR ASSY

Ref	Part Number	Qty	Description
	KBH10800	1	RADIATOR, , Include(s) 1 - 55
1	LN001870	1	RADIATOR, , Include(s) 2 - 6
2	NSS	1	NOT SERVICED SEPARATELY, Radiator
3	LE014620	2	
4	LE014610	1	
5	LE014600	2	
6	LE014590	1	
7	LG005900	2	STRIP-GASKET,
8	LG005620	2	STRIP-GASKET,
9	TR00521	1	CAP, RADIATOR,
10	156602A1	1	COCK,
11	LK005540	1	PLUG,
12	LA00804	1	CLIP,
13	LT001620	1	
14	LA010480	4	BOLT,
15	LA010490	4	WASHER,
16	LG005910	4	SEAL PROTECTION,
17	LH004680	4	COLLAR,
18	LN001850	1	COOLER, OIL, , Include(s) 19 - 27
19	LN001840	1	
20	LE014580	1	
21	LE014570	1	
22	LE014560	1	
23	LE014550	1	
24	LE014540	1	
25	LE014530	2	
26	LE014520	1	
27	LE014510	2	
28	LA00792	2	SCREW,
29	LA00792	2	SCREW,
30	LR015010	1	
31	LE013660	1	O-RING,
32	LA010890	2	BOLT,
33	LR014850	1	PIPE,
34	LE013660	1	O-RING,
35	LA010890	2	BOLT,
36	LW005030	1	SHROUD,
37	LA00677	8	BOLT,
38	LS003320	1	
39	LA00781	4	SCREW,
40	LS003220	1	BRACKET,
41	LA00781	2	SCREW,
42	LG006000	1	
43	LG005990	1	
44	156606A1	4	BOLT,

## CX240B CASE CRAWLER EXCAVATOR TIER III (EUROPE) (1/07- )

## 02-004-01(01) RADIATOR ASSY

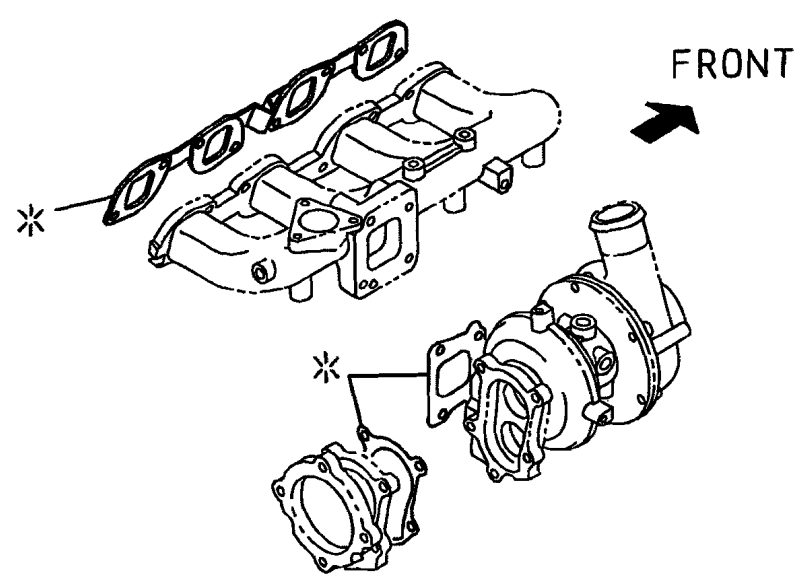
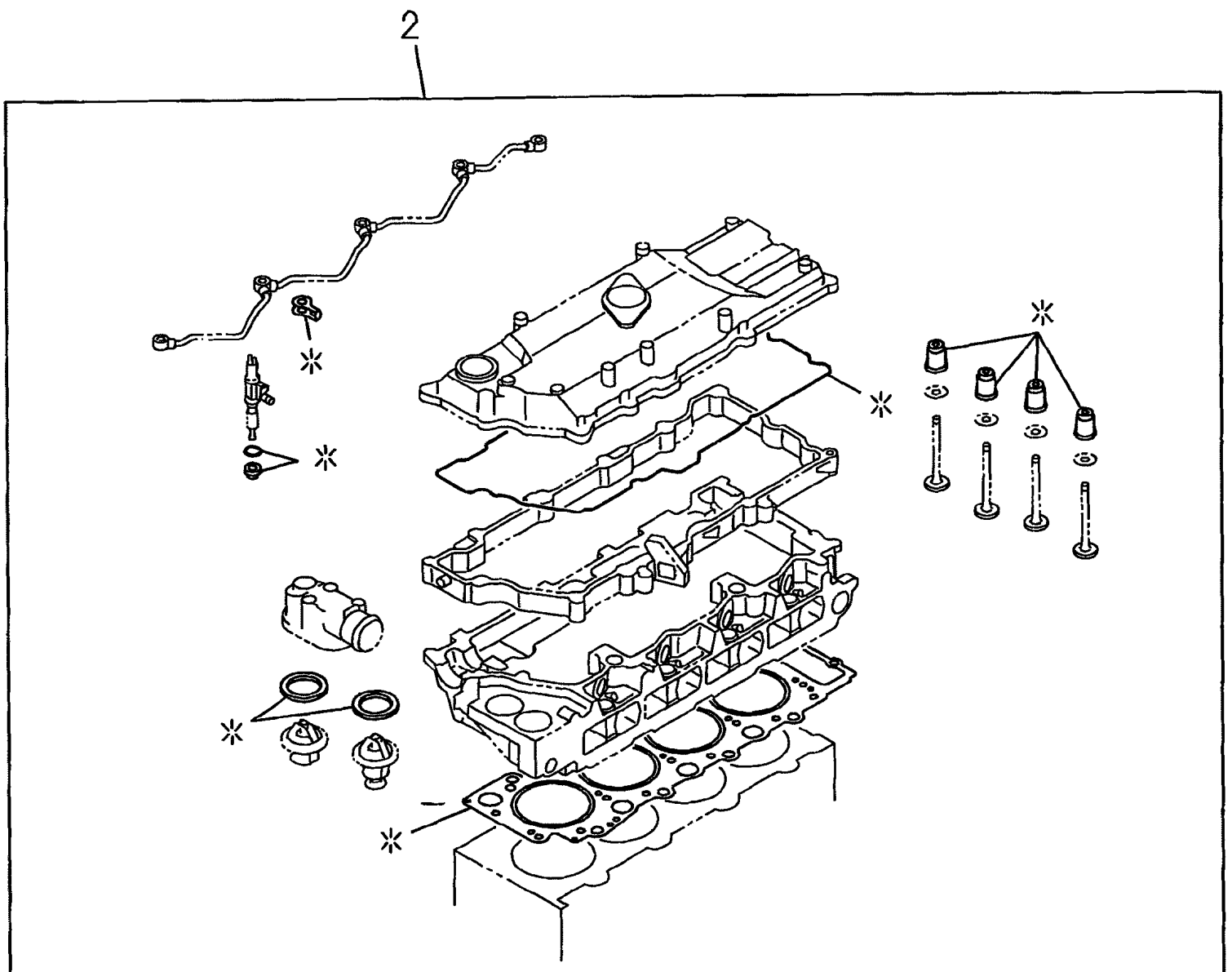
Ref	Part Number	Qty	Description
45	LN001830	1	INTERCOOLER,
46	LA00781	2	SCREW,
47	LA010500	2	BOLT,
48	LS003230	1	BRACKET,
49	LA00781	4	SCREW,
50	LN001760	1	COOLER,
51	LUG0003	4	BOLT,
52	LS003310	1	
53	LA00677	2	BOLT,
54	LS003300	1	
55	LA00677	2	BOLT,



## CX240B CASE CRAWLER EXCAVATOR TIER III (EUROPE) (1/07- )

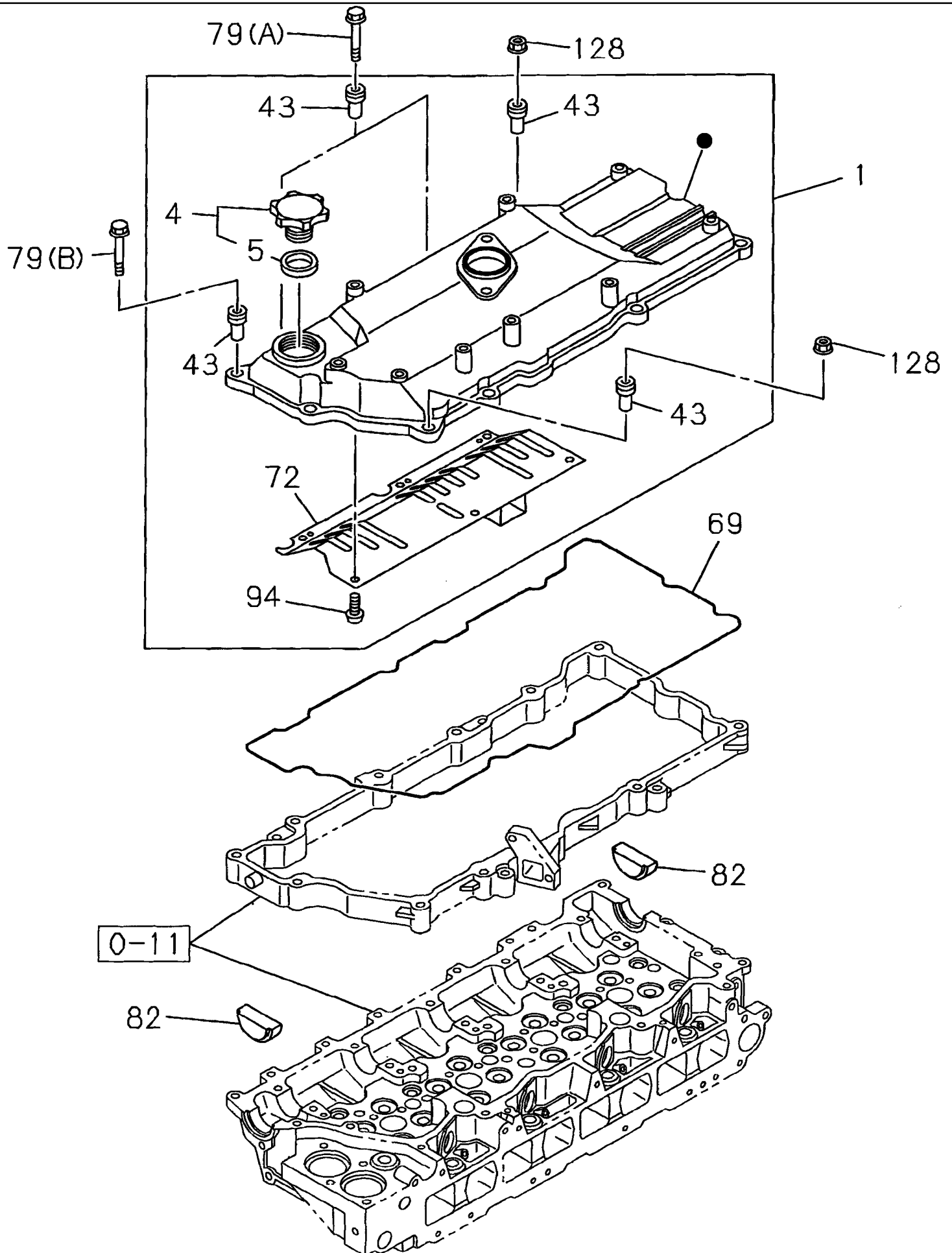
## 02-005-01(01) PACKAGE SEALS - ENGINE

Ref	Part Number	Qty	Description
1	87595208	1	KIT, ENGINE OVERHAUL, T=1.475
1	87595212	1	KIT, ENGINE OVERHAUL, T=1.525
1	87595214	1	KIT, ENGINE OVERHAUL, T=1.575



## 02-005-02(01) PACKAGE SEALS - ENGINE

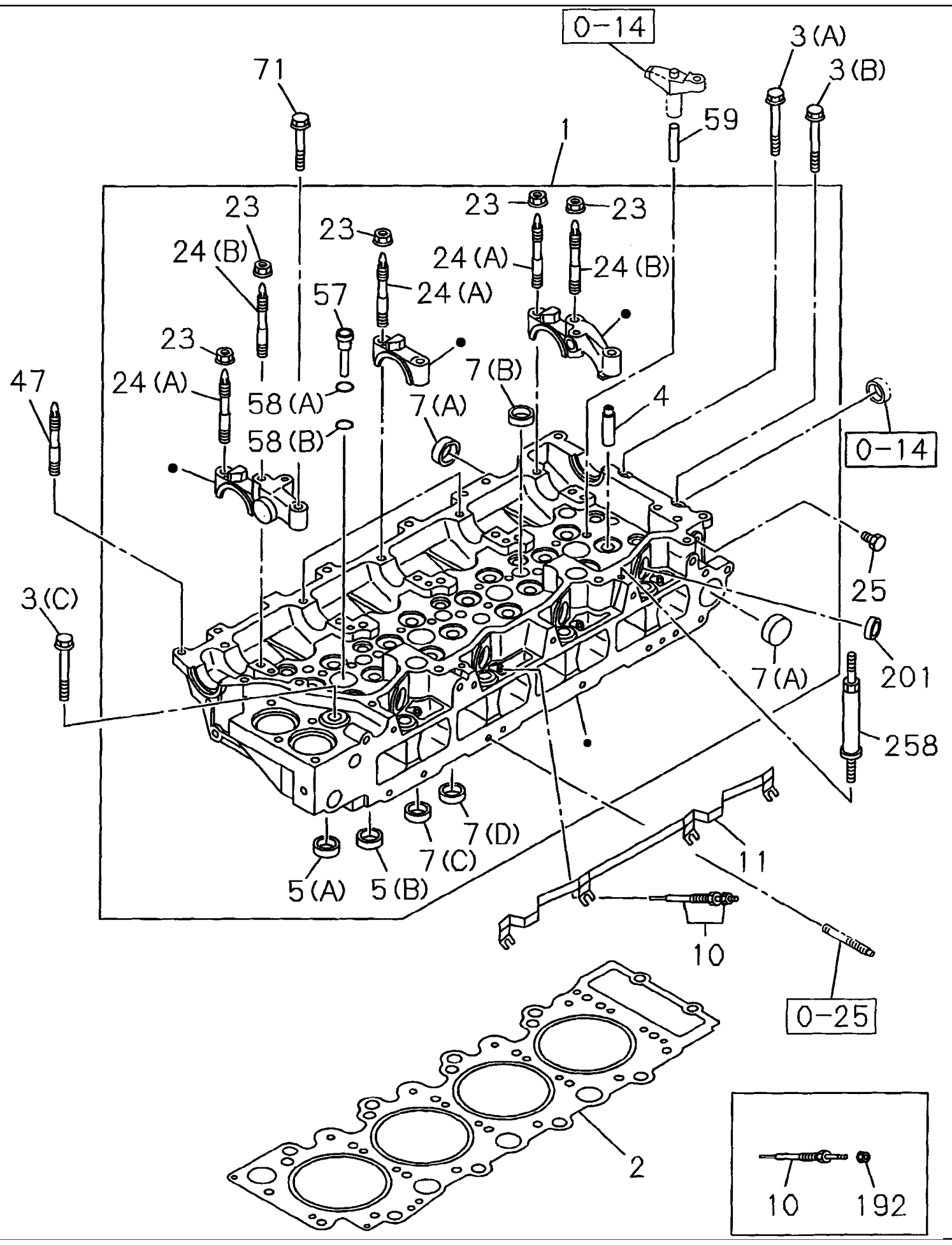
Ref	Part Number	Qty	Description
2	87595215	1	KIT, ENGINE OVERHAUL, T=1.475
2	87595240	1	KIT, ENGINE OVERHAUL, T=1.525
2	87595241	1	KIT, ENGINE OVERHAUL, T=1.575



## CX240B CASE CRAWLER EXCAVATOR TIER III (EUROPE) (1/07- )

## 02-010-01(01) COVER - CYLINDER HEAD

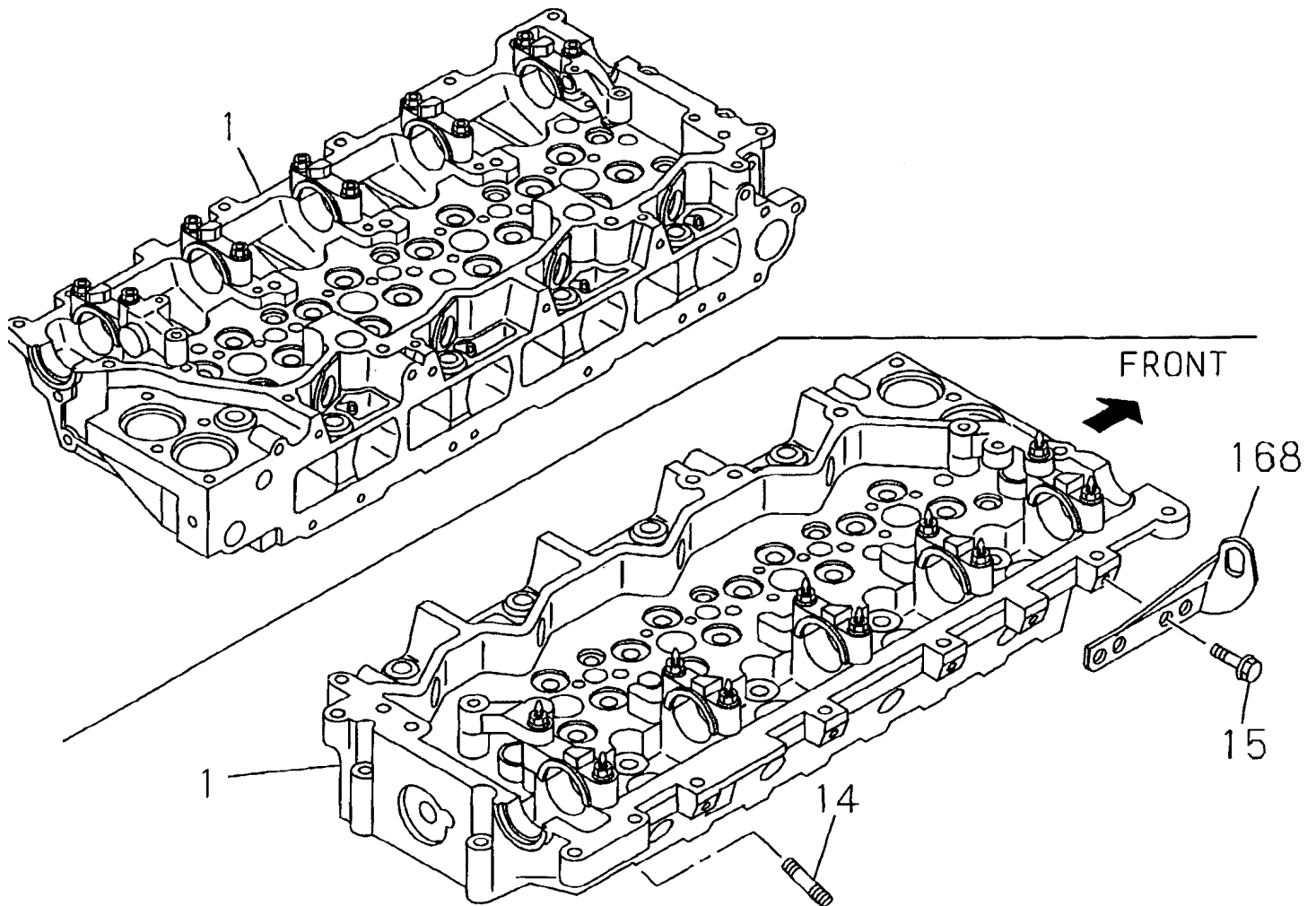
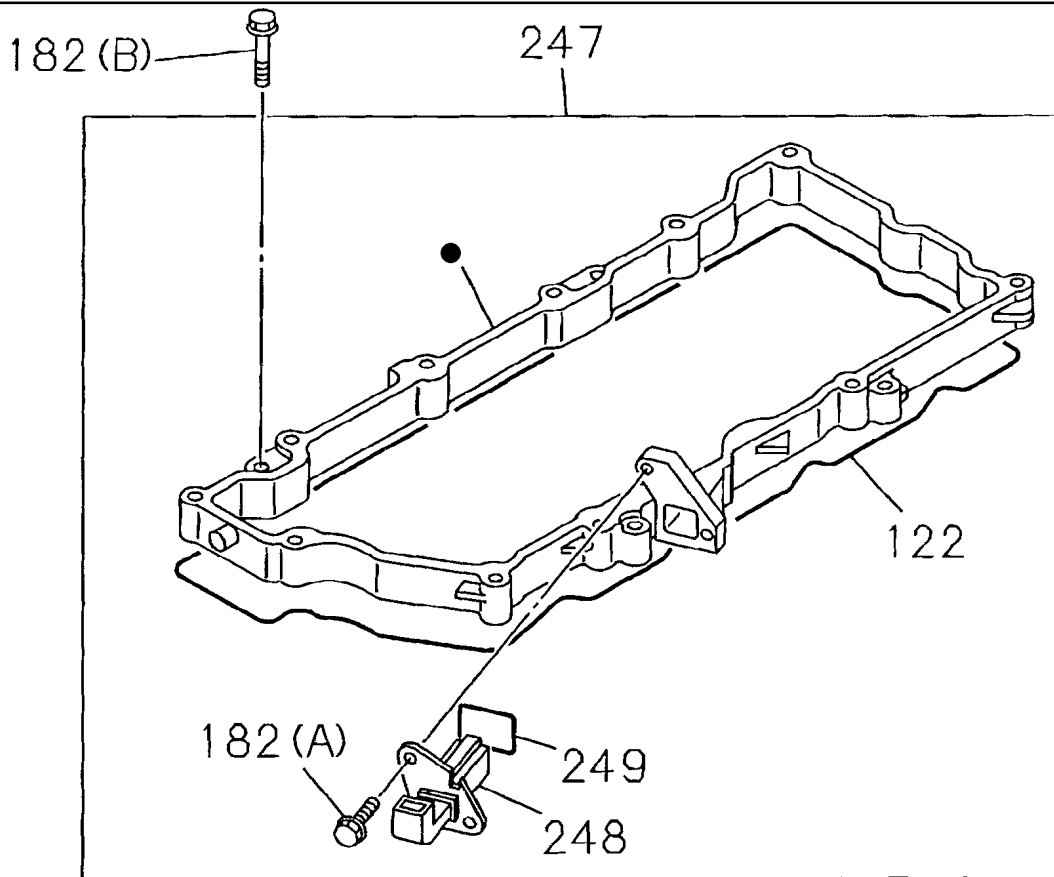
Ref	Part Number	Qty	Description
0-11	REF	1	INSTRUCTION, , See Figure(s) 02-011-01 01
1	87595244	1	COVER, VALVE, , Include(s) 4, 43, 72, 94
4	288798A1	1	CAP, FILLER, , Include(s) 5
5	72109500	1	SEAL,
43	87384321	11	SEAL, RUBBER,
69	87595255	1	GASKET,
72	438070A1	1	PLATE,
79A	87595258	2	SCREW,
79B	87595261	7	SCREW,
82	72109530	2	PLUG,
94	87595263	6	SCREW,
128	87595271	2	NUT,



## CX240B CASE CRAWLER EXCAVATOR TIER III (EUROPE) (1/07- )

## 02-011-01(01) CYLINDER HEAD

Ref	Part Number	Qty	Description
0-14	REF	1	INSTRUCTION, , See Figure(s) 02-014-01 01
0-25	REF	1	INSTRUCTION, , See Figure(s) 02-025-01 01
1	87595278	1	CYLINDER HEAD, , Include(s) 4, 5A, 5B, 7A - 7D, 23, 24A, 24B, 57, 58A, 58B, Also See Figure(s) 02-011-02 01
2A	87595389	1	GASKET, CYLINDER HEAD,
2B	87595395	1	GASKET, CYLINDER HEAD,
2C	87595396	1	GASKET, CYLINDER HEAD,
3A	438152A1	1	SCREW,
3B	438153A1	1	SCREW,
3C	87595398	18	SCREW,
4	438044A1	16	GUIDE,
5A	72109510	8	VALVE SEAT,
5B	72109512	8	VALVE SEAT,
7A	87595408	5	CUPEL,
7B	289076A1	4	CUP,
7C	71455287	7	PLUG,
7D	353962A1	5	PLUG,
10	438043A1	4	PLUG,
11	87595410	1	CONNECTOR, ELEC,
23	87595428	10	NUT,
24A	438026A1	8	STUD,
24B	438025A1	2	STUD,
25	87377930	1	PLUG,
47	87595430	2	STUD,
57	87528150	4	HOLDER NOZZLE,
58A	87377928	4	GASKET,
58B	87377929	4	GASKET,
59	87379448	8	GUIDE,
71	87595463	2	SCREW,
192	87595807	4	NUT,
201	437881A1	4	GASKET,
258	87595816	1	ADAPTER,



## CX240B CASE CRAWLER EXCAVATOR TIER III (EUROPE) (1/07- )

## 02-011-02(01) CYLINDER HEAD

Ref	Part Number	Qty	Description
1	87595278	1	CYLINDER HEAD, , See Figure(s) 02-011-01 01
14	438137A1	2	STUD,
15	87595411	2	SCREW,
122	87595470	1	GASKET,
168	87595472		HANGER,
182A	87595805	2	SCREW,
182B	87595806	3	SCREW,
247	87595813	1	CASE, , Include(s) 122, 182A, 248, 249
248	87380194	1	FITTING,
249	87379336	1	GASKET,



**Suggest:**

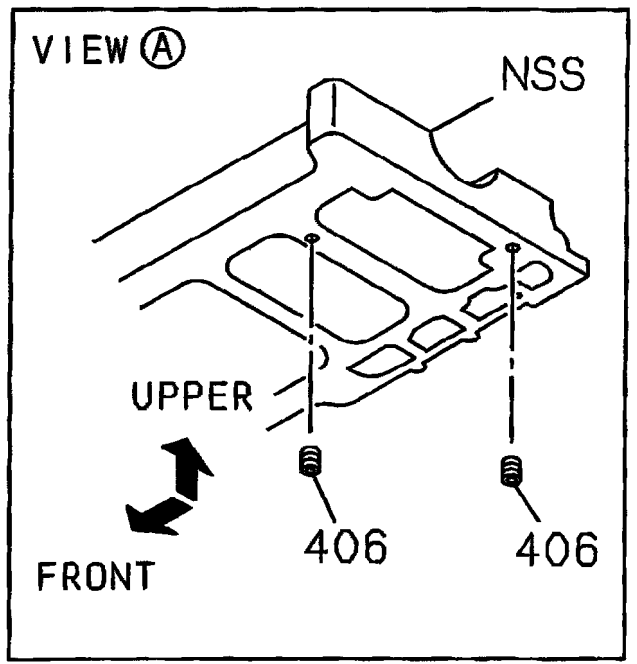
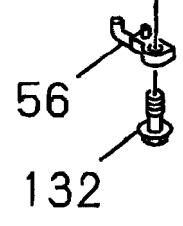
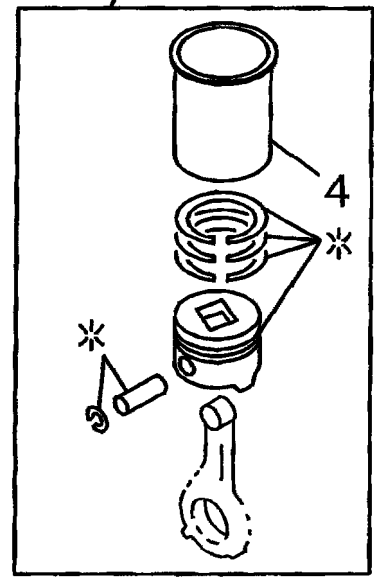
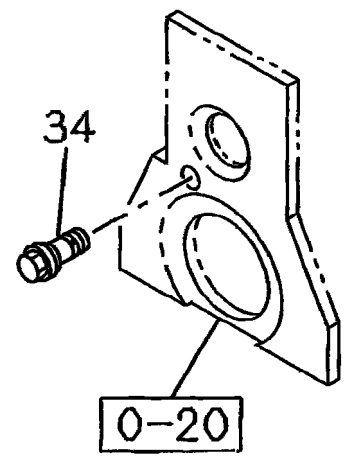
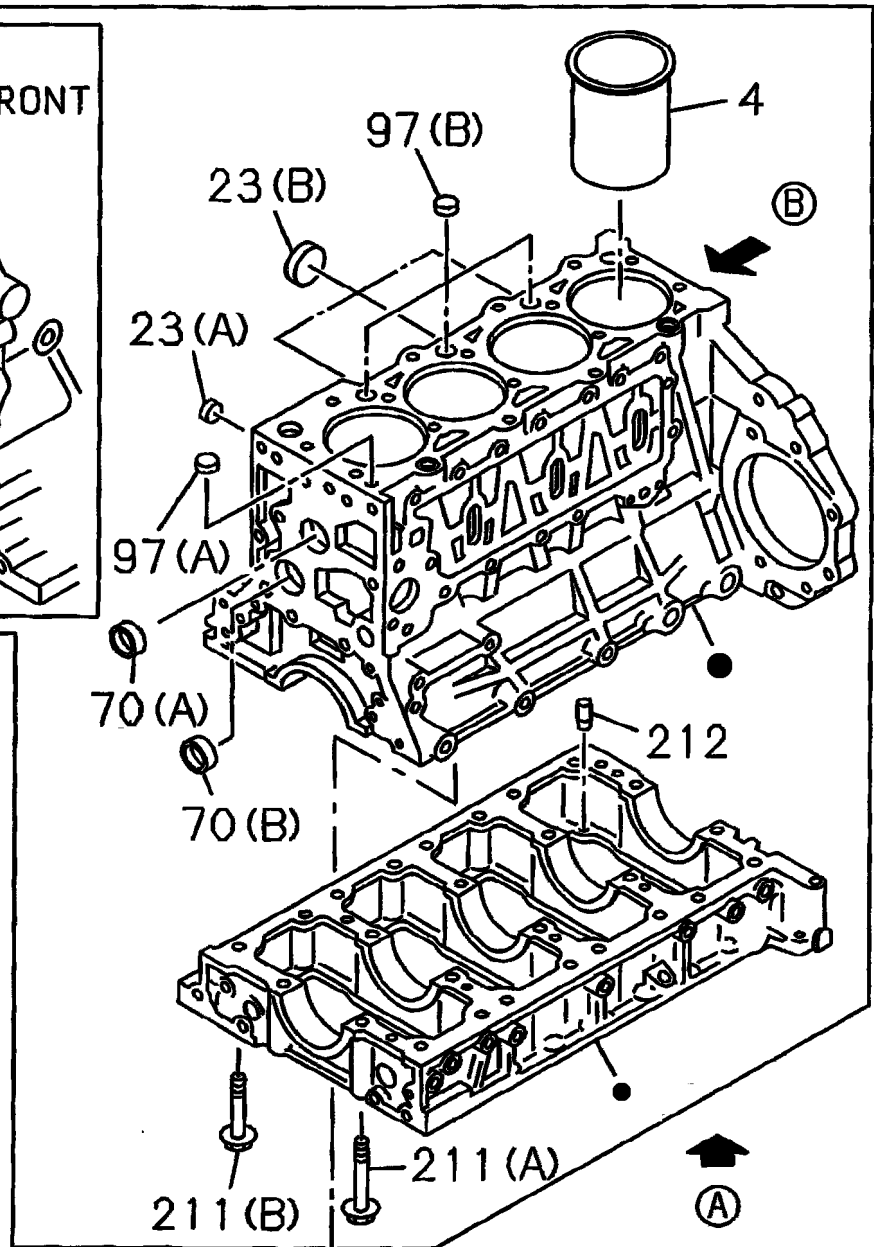
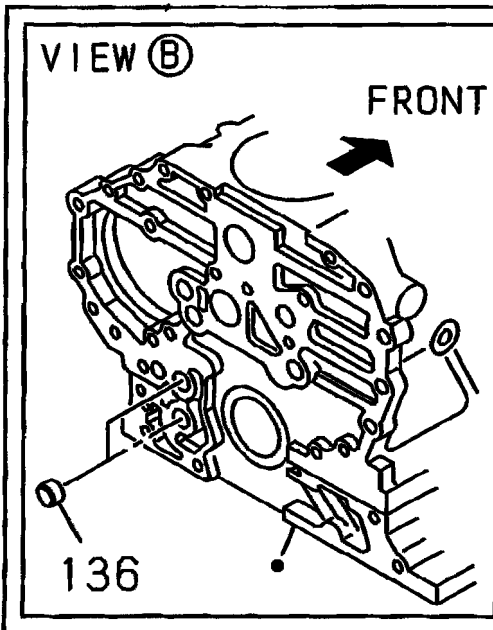
**If the above button click is invalid.**

**Please download this document**

**first, and then click the above link**

**to download the complete manual.**

**Thank you so much for reading**



**<https://www.ebooklibonline.com>**

Hello dear friend!

Thank you very much for reading.

Enter the link into your browser.

The full manual is available for immediate download.

**<https://www.ebooklibonline.com>**