

TABLE OF CONTENTS 2390 AND 2590 TRACTORS

SERIES	SECTION	DESCRIPTION	FORM NUMBER
10		GENERAL	
	1210	General Specifications - 2390 Tractors	8-20800
	1211	General Specifications - 2590 Tractors	8-20810
	1212	Lubrication - 2390 Tractors	8-20821
	1213	Lubrication - 2590 Tractors	8-20831
	1220	Engine Specifications 504BDT Engine	8-20841
	1230	Fuel System Specifications	8-20850
	1250	Steering Specifications	8-20070
	1260	Power Train Specifications	8-20870
	1270	Brake System Specifications	8-20880
	1280	Hydraulic System Specifications	8-20890
20		ENGINES	
	2201	Trouble Shooting - Engine	8-20111
	2202	Engine Tune-Up	8-20120
	2210	Tractor Split (Between Engine and Torque Tube)	8-20900
	2215	Cylinder Head, Valve Train and Camshaft	8-20140
	2225	Cylinder Block, Sleeves, Pistons and Rods	8-20150
	2235	Crankshaft, Main Bearing, Flywheel and Oil Seals	8-20160
	2245	Lubrication System - Oil Pump, Oil Pan and Heat Exchanger	8-20910
	2255	Cooling System	8-20180
	2265	Turbocharger - T04B	8-20190
	2565	Turbocharger Failure Analysis	9-78235
	2275	Air Induction System	8-20920
	2290	Reconditioning Engine Cylinder Block	8-21170
30		FUEL SYSTEM	
	3210	Fuel System and Filters	8-20220
	3212	Robert Bosch Fuel Injection Pumps	8-20230
	3213	American Bosch Fuel Injectors	8-20240
40		ELECTRICAL	
	4201	Electrical System Troubleshooting	8-22580
	4210	Tractor Electrical Wiring Diagram (Prior to P.I.N. 8841101)	8-20261
	4210	Tractor Electrical Wiring Diagram (P.I.N. 8841101 and After)	8-22640
	4220	Cab Electrical Wiring Diagram (Prior to Cab SN12013067)	8-20270
	4220	Cab Electrical Wiring Diagram (Cab SN12013067 and After)	8-22650
	4230	Starting Motors - Delco Remy	8-21420
	4230	Starting Motors - Nippondenso	8-25980
	4235	Battery Servicing and Testing	8-20291
	4240	Delco-Remy Alternator System	8-21430
	4280	Neutral Start Switch Adjustment and Correct Starting Procedure Using Booster Batteries	8-20930
50		STEERING	
	5205	Testing Tractor Steering System	8-20950
	5210	Steering Column, Pump and Valve	8-20341
	5220	Steering Cylinder	8-20351
	5230	Front Steering Axle and Lines	8-20360

Reprinted

SERIES	SECTION	DESCRIPTION	FORM NUMBER
60		POWER TRAIN	
	6201	Trouble Shooting - RPS-34 Power Shift Transmission and PTO	8-20370
	6205	Testing RPS-34 Power Shift Transmission and PTO	8-20960
	6210	Tractor Split (Between Torque Tube and Transmission)	8-20970
	6220	Torque Limiter Clutch	8-20980
	6225	Hydraulic Pump Drive	8-20990
	6230	RPS-34 Power Shift	8-21000
	6235	RPS-34 Control Valve and Linkage	8-21010
	6240	Four Speed Transmission	8-21021
	6245	Hydraulic PTO	8-21030
	6250	Rear Axles and Planetaries	8-21040
	6255	Differential and Differential Lock	8-21050
70		BRAKES	
	7210	Power Assist Unit and Pedals	8-21060
	7215	Park Lock System	8-21070
	7220	Brake Cylinders	8-21080
80		HYDRAULIC	
	8202	Trouble Shooting - Hitch System	8-21090
	8205	Testing Tractor Hydraulic System	8-21101
	8210	Hydraulic Oil Filters	8-21110
	8220	Hydraulic Charging Pump	8-21120
	8225	Hydraulic Pump	8-21131
	8250	Remote Hydraulic Valves	8-20610
	8255	Flow Divider and PTO Control Valve	8-21140
	8280	Hitch System	8-21151
	8290	Break-Away Couplings and Portable Cylinders	8-20640
90		ACCESSORIES	
	9205	Trouble Shooting - Air Conditioning System	8-20650
	9215	Gauging and Testing Air Conditioning System	8-20660
	9225	Compressor Isolation, Removal, Installation and Evacuation - Discharging, Evacuation and Charging the Air Conditioning System	8-20670
	9235	Servicing Air Conditioner Components	8-20680
	9245	Servicing the Cab Blower	8-20690
	9250	Operators Seat Adjustments	8-20700
	9260	Removal of Hood, Grill and Side Panels	8-20710
100		HOW IT WORKS	
	18201	Tractor Hydraulics System Oil Flows	8-20750
	18225	Case CON TROL Hydraulics	8-21350

Section 1210

GENERAL SPECIFICATIONS

2390 Tractors

Written In *Clear
And
Simple
English*

<https://www.ebooklibonline.com>

Hello dear friend!

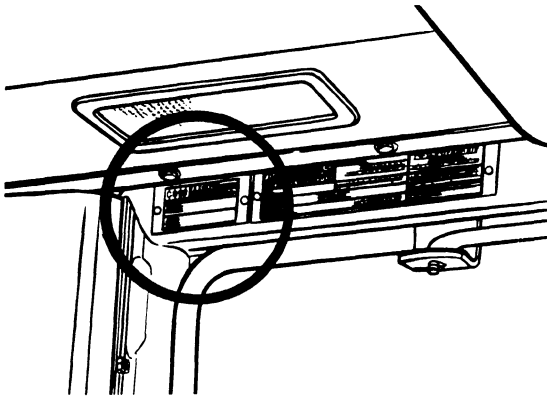
Thank you very much for reading.

Enter the link into your browser.

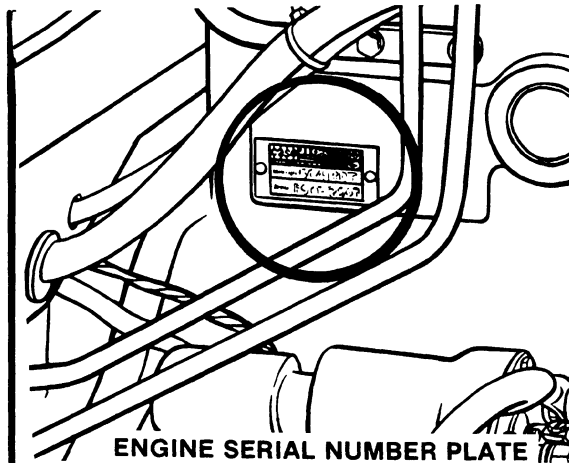
The full manual is available for immediate download.

<https://www.ebooklibonline.com>

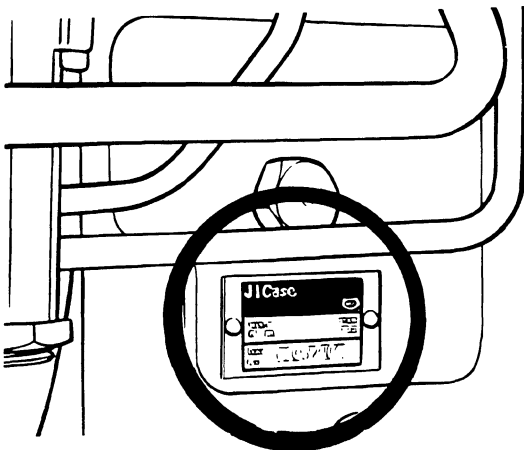
SERIAL NUMBERS



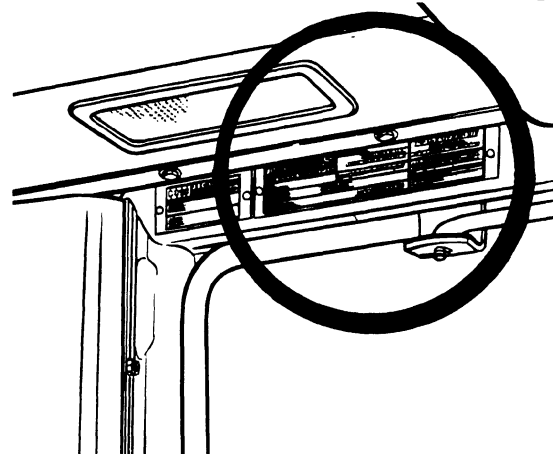
CAB SERIAL NUMBER PLATE



ENGINE SERIAL NUMBER PLATE



TRANSMISSION SERIAL NUMBER PLATE



**MODEL AND PRODUCT IDENTIFICATION
NUMBER PLATE**

DIESEL ENGINE SPECIFICATIONS

General

Type	Six Cylinder, Four Stroke Cycle, Turbocharged, Valve in Cylinder Head.
Firing Order	1-5-3-6-2-4
Bore	4-5/8 Inches (117.5 mm)
Stroke	5 Inches (127 mm)
Piston Displacement	504 Cubic Inches (8 259 cm ³)
Compression Ratio	15.75 to 1
Cylinder Sleeves	Wet Type, Can be Removed
Governor Engine Speed Without Load	2280 to 2320 RPM
Rated Engine Speed	2100 RPM
Engine Idle Speed	725 to 775 RPM
Rocker Arm-to-Valve Clearance (Exhaust)	0.025 Inch (0.635 mm)
(Intake)	0.015 Inch (0.381 mm)

IMPORTANT: *Rocker Arm-to-valve clearance adjustment must be made when the engine is not running.*

Piston and Rod

Rings Per Piston	3
Compression Rings per Piston	2
Oil Rings Per Piston	1
Type Piston Pin	Full Float
Type Bearings	Replacement Bearings Available, Steel Back with Aluminum or Copper and Lead Liners.

Main Bearings

Quantity of Bearings	7
Type of Bearings	Replacement Bearings Available, Steel Back with Aluminum or Copper and Lead Liners.

Engine Lubrication System

Oil Pressure	45 to 60 PSI (310 to 414 kPa) (3.1 to 4.14 bar) with Engine Warm and Operating at Rated Speed.
Type System	Pressure and Spray with Piston Oil Cooling
Oil Pump	Gear Type
Oil Filter (2)	Full Flow, Turn on Type, By-pass Valve in Filter Base.
Oil Capacity	With Filters, 26 U.S. Quarts (24.6 litres) Without Filters, 22 U.S. quarts (20.8 litres)
Oil Cooler	Engine Oil

Fuel System

Fuel Injection Pump	Robert Bosch, Type PES.
Pump Timing	27 Degrees (BTDC) Before Top Dead Center. IMPORTANT: Do not increase past 27 degrees BTDC at any time. The given 27 Degrees Gives Minimum Emissions in Tractor Operation.
Fuel Injectors	American Bosch, 17 mm
Fuel Transport Pump	Plunger Type, a Part of the Fuel Injection Pump.
Governor	Variable Speed, Parts of Fuel Injection Pump.
First Stage Fuel Filter	Full Flow, Turn on Type
Second Stage Fuel Filter	Full Flow, Turn on Type
Water Trap and Drain For Fuel Tank	Location is in Bottom of Fuel Tank.
Fuel Tank Capacity	85 U.S. Gallons (322 litres)
Fuel Level Gauge	Electric, Location is on Instrument Cluster.
Hand Primer Pump	Location is on Top of Fuel Transport Pump.
Primary Fuel Filter	Location is at Bottom of Fuel Transport Pump.

GENERAL TRACTOR SPECIFICATIONS

Air Intake System

Type Dry Type Air Induction System, Two Stage
with Service Indication, Strata Tube.

Cooling System

Capacity 44 U.S. Quarts (41.6 litres)
Type Pressure System, Thermostat Controlled.
By-pass, Impeller Type Pump.
Radiator Heavy Duty Fin and Tube Type
Thermostats (2) Starts to Open at Approximately 175° F (79° C)
Fully Open at 202° F (94° C).
Pressure Cap 10 PSI (69 kPa)(6.9 bar)
Coolant Level Low Coolant Warning Lamp on Instrument Cluster.

Electrical System

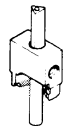
Type of System 12 Volt, Negative Ground
Batteries Two 12 Volt Batteries Connected in Parallel, AABM
Group Size TFG 10-600 Rated in 1.255 to 1.265 Specific Gravity. Discharge Rate 300 Amperes at 0° F.
Voltage Decrease to 9.4 After 10 seconds. Voltage
Decreases 1.0 Volt per Cell After 5 minutes.
Alternator 12 Volt, 61 Ampere Output, Negative Ground or 12 Volt
72 Ampere Output Negative Ground.
Voltage Regulator 12 Volt, Solid State, Inside
Component of Alternator
Starter Motor 12 Volt with Solenoid Switch
Headlights (2) 12 Volt, 40/60 Watt Sealed Beam High-Low
Front Floodlights (4 Max)(Optional) 12 Volt, 50 Watt, Sealed Beam
Rear Floodlights (3 Max)(Optional) 12 Volt, 50 Watt, Sealed Beam
Flasher Lights (2) With Direction Turn Signals 12 Volt, Amber Lens
Tail Light (2) 12 Volt, Red Lens
Tractor Electrical System Circuit Breaker 12 Volt, Dual 50 Ampere Circuit Breakers Connected
in Parallel, 100 Ampere Rating, 80 Ampere Continuing Capacity.
Cab Electrical System Circuit Breaker 12 Volt, 20 Ampere

INSTALLATION INSTRUCTIONS FOR M20614 TEFLON VALVE SEAL KIT

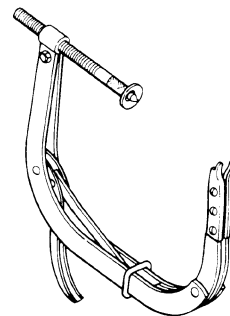
Special Tools Required



M20624 SEAL INSTALLATION TOOL

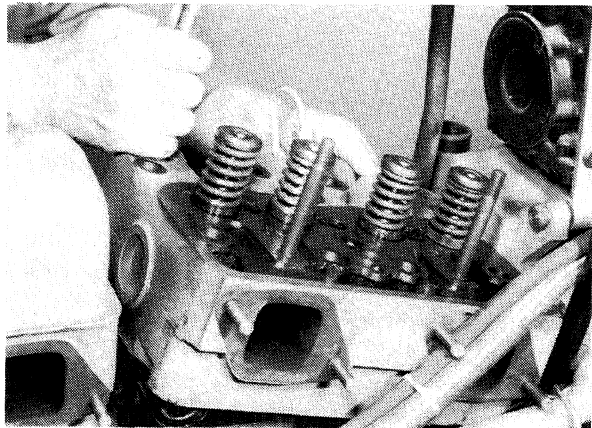


M20617 VALVE GUIDE CUTTING TOOL



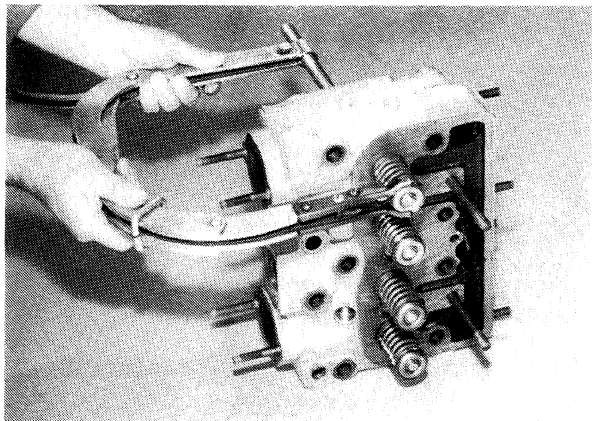
VALVE SPRING COMPRESSOR

STEP 1



Remove the cylinder heads. See Section 2215 of the Service Manual for removal of the cylinder heads.

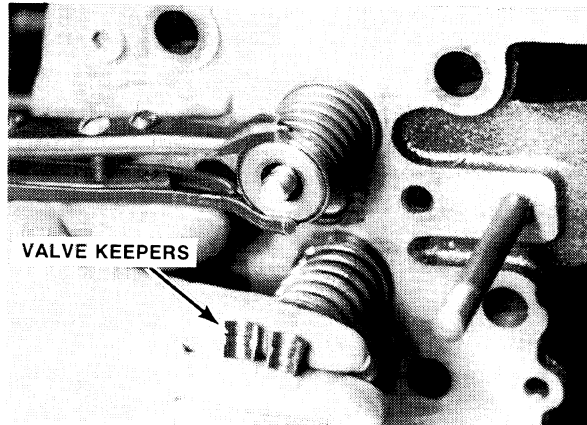
STEP 2



Use a valve spring compressor to push down the valve springs.

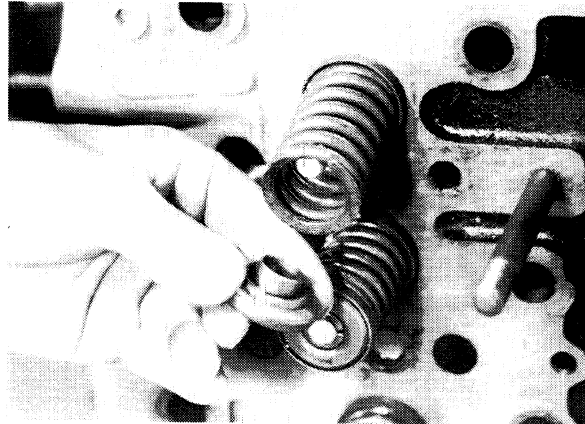
IMPORTANT: Make a mark on the valves, rotators, spring retainers and keepers. This will make sure that the parts are installed in the original location.

STEP 3



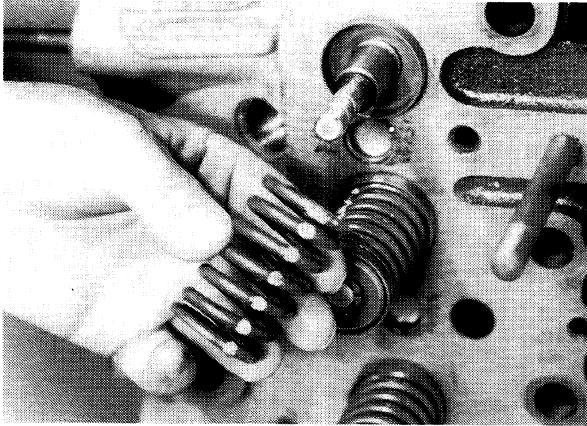
Push down the valve springs and remove the valve keepers.

STEP 4



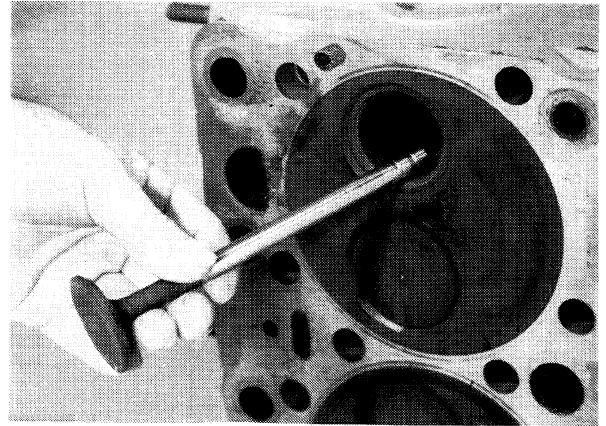
Remove the valve rotators or the valve spring retainers.

STEP 5



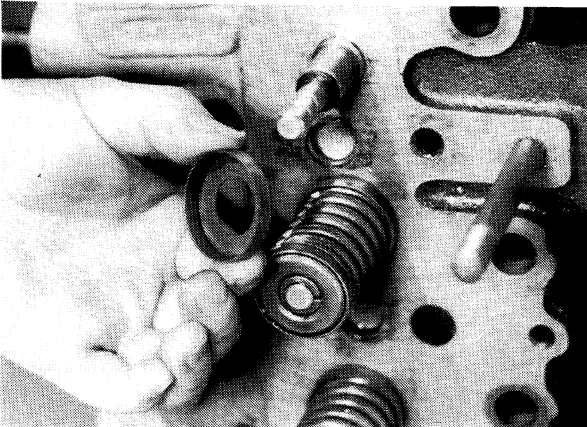
Remove the valve springs.

STEP 8



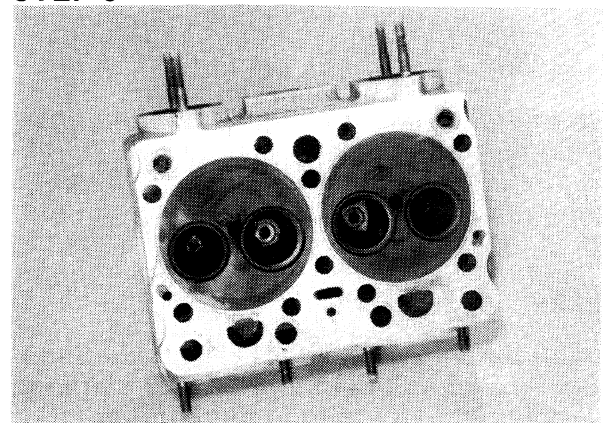
Remove the valves.

STEP 6



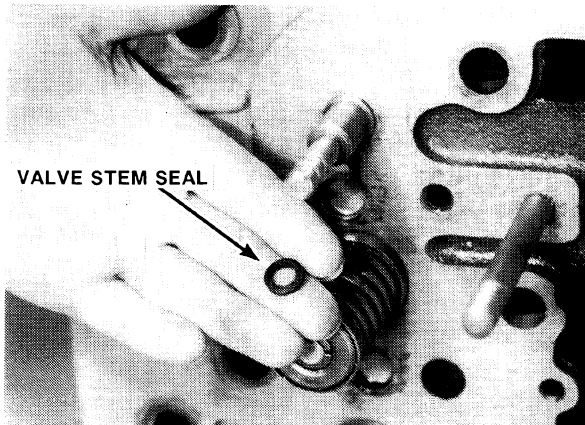
Remove the spring seats.

STEP 9



Clean the cylinder head completely, removing all the carbon and other deposits. Check for cracks and for any sign of damage, existing in the area of the fire ring contact.

STEP 7



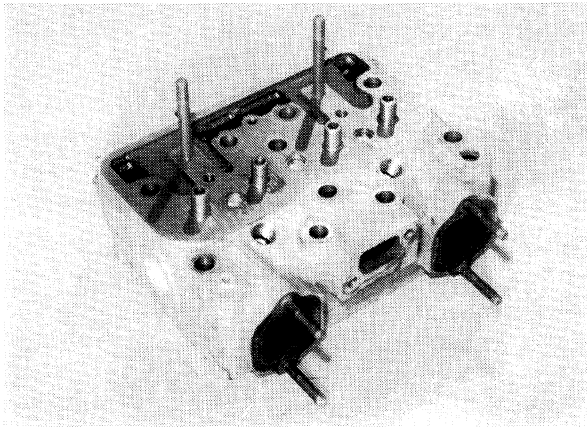
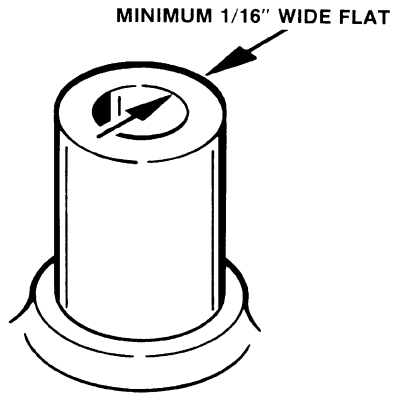
Remove the valve stem seals.

STEP 10



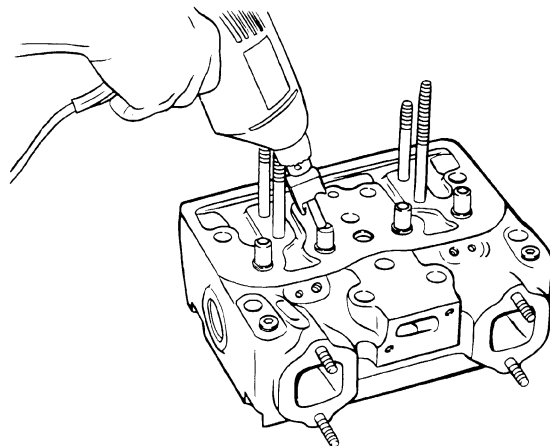
Clean the valves with a fine wire brush that is power driven. Remove all carbon and varnish deposits. Do not scratch the valve stems.

STEP 11



Check the top surface of the valve guide. There must be a minimum of a 1/16" (0.0625 mm) wide flat around the complete top surface.

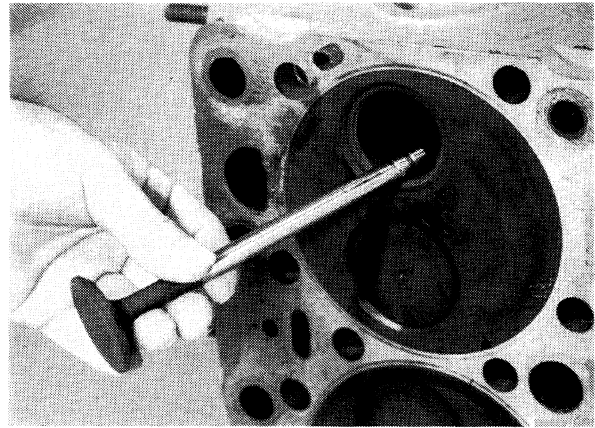
STEP 12



Use the M20617 tool in an electric drill to give the necessary flat area on the valve guide.

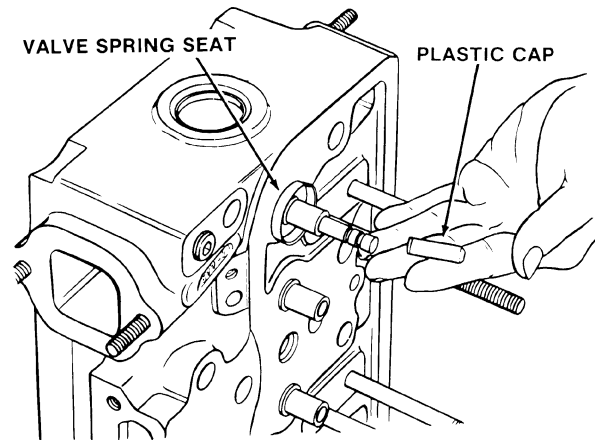
IMPORTANT: Do not go over 450 RPM when drilling.

STEP 13



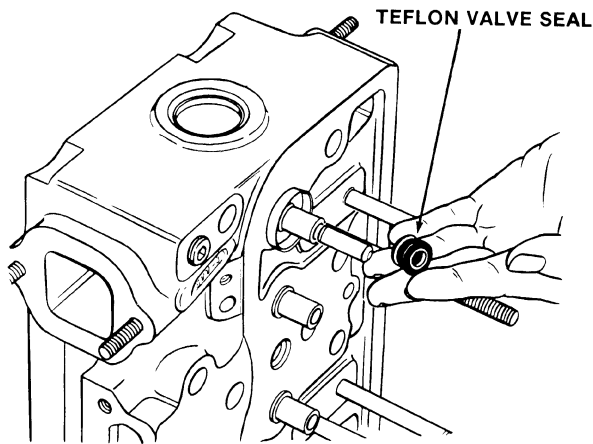
Put clean engine oil on the valves before installing the valves in the cylinder head.

STEP 14

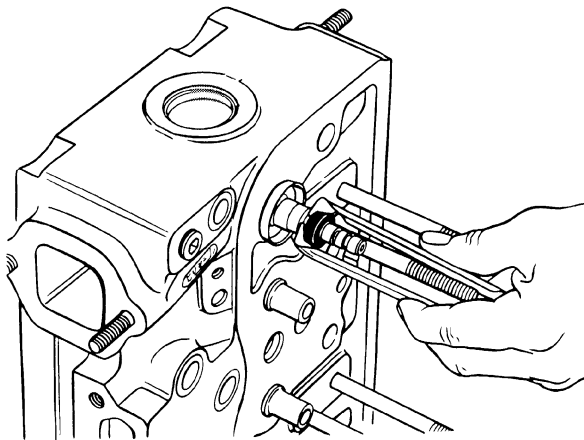


Install the spring seats. Put the plastic installation cap on the end of the valve stem. The plastic cap prevents the sharp edges on the valve stem grooves from cutting the valve seal.

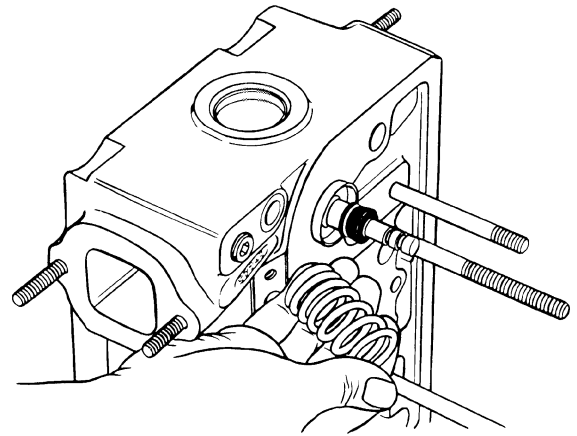
NOTE: One M20614 kit is required for one cylinder head.

STEP 15

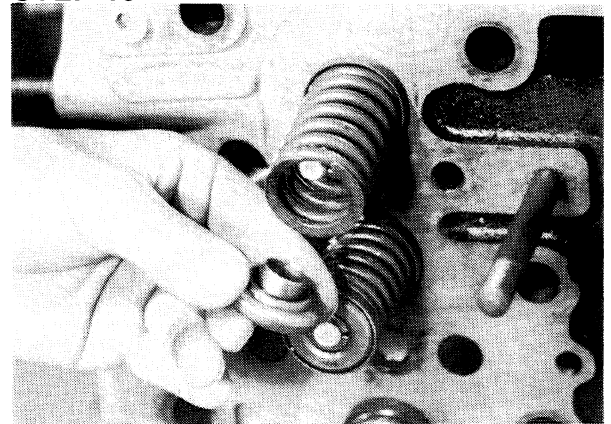
Put the valve seal over the plastic cap. Hold your thumb against the white seal insert to keep the insert from coming out. Push the valve seal down so that the seal jacket is against the top of the valve guide. Remove the installation cap. Keep the cap since the cap will be used again.

STEP 16

Use the M20624 tool and push the seal down over the valve guide until the seal is level with the top of the guide.

STEP 17

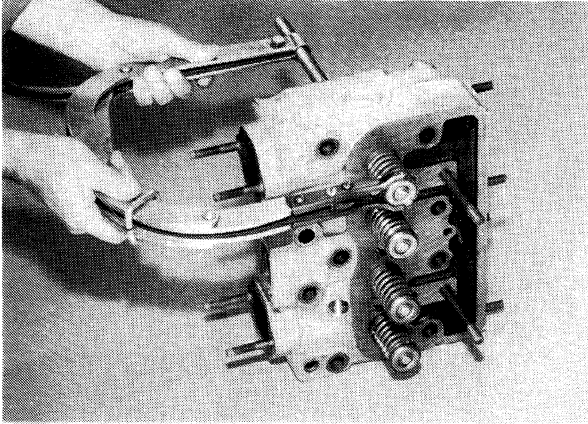
Install the valve spring. Either end of the valve spring can be installed in the valve spring seat because both ends of the spring are closed.

STEP 18

Install the valve rotators or the valve spring retainers (flat side up).

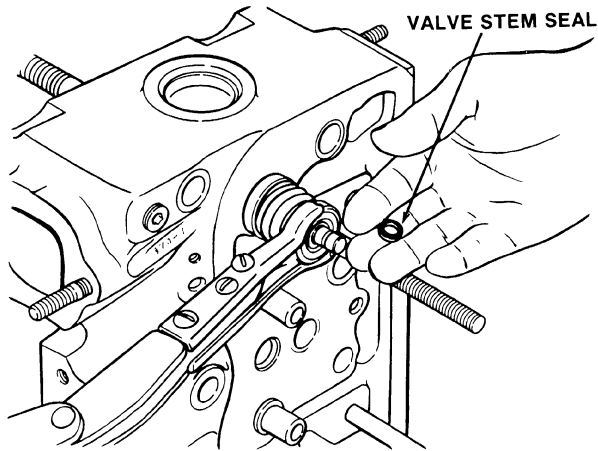
IMPORTANT: *Install the valve rotators or the valve spring retainers with the original valves because these parts are worn as counterparts of each other.*

STEP 19



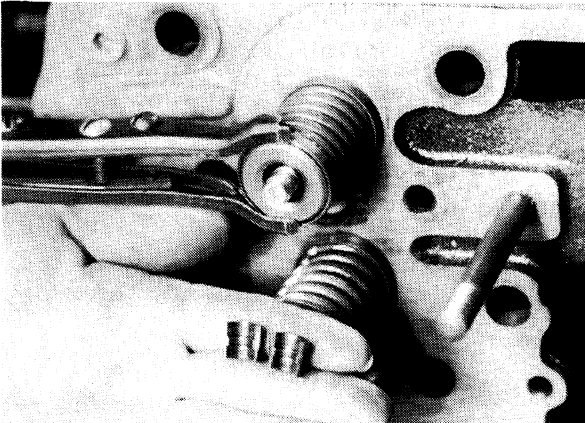
Push down the valve springs with a spring compressor.

STEP 20



Install a new valve seal in the lower valve stem groove.

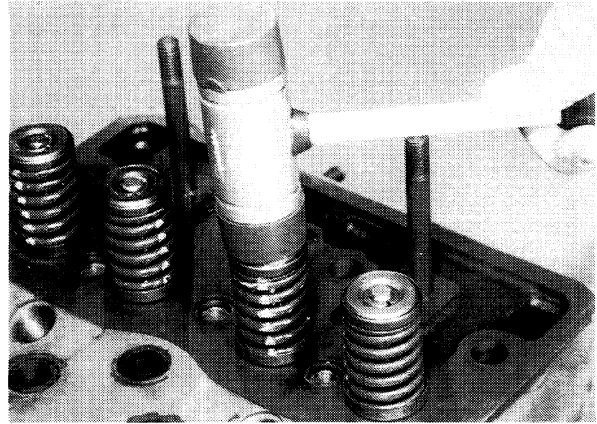
STEP 21



Install the valve keepers in the upper valve stem groove.

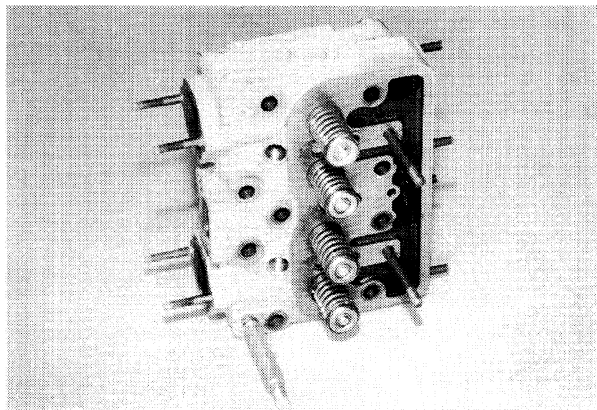
Rac 8-20111

STEP 22



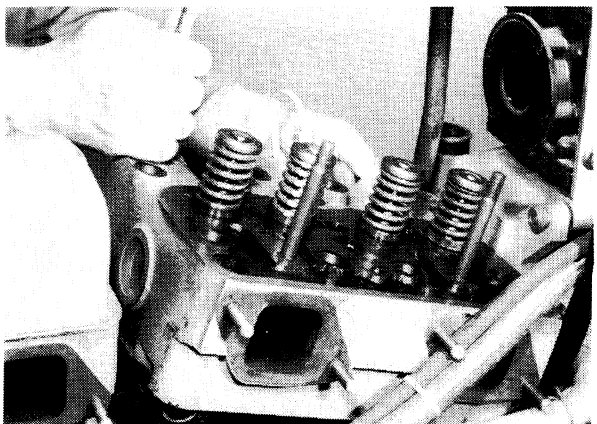
Remove the spring compressor. Hit the end of the valve stems with a soft hammer to seat the valve keepers.

STEP 23



Install teflon seals on all the intake and exhaust valves.

STEP 24



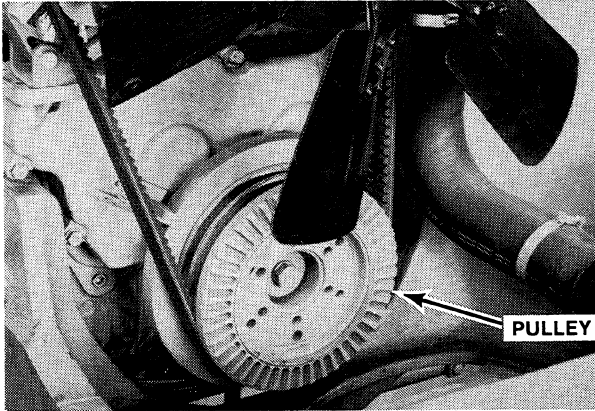
Install the cylinder heads. See Section 2215 of the Service Manual for installation of the cylinder heads.

Revised 7-83 Printed in U S A.

ENGINE TUNE-UP PROCEDURE

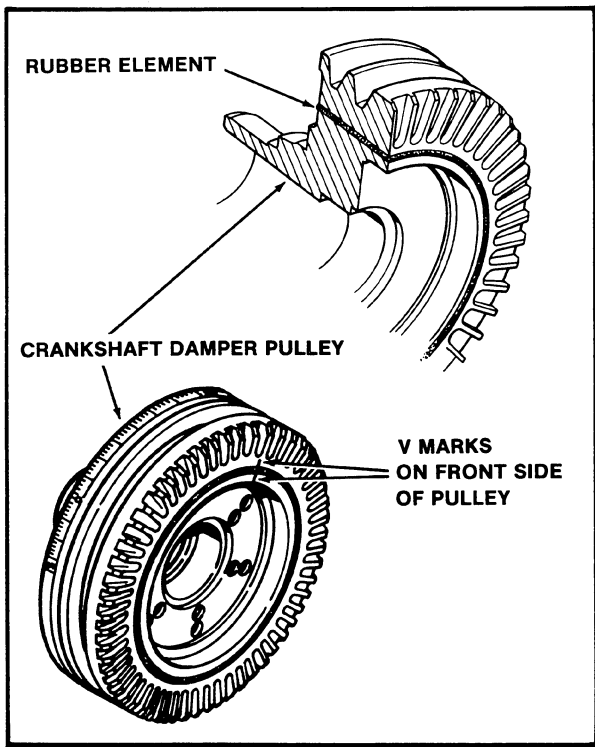
Checking The Crankshaft Damper Pulley (If Equipped)

STEP 1

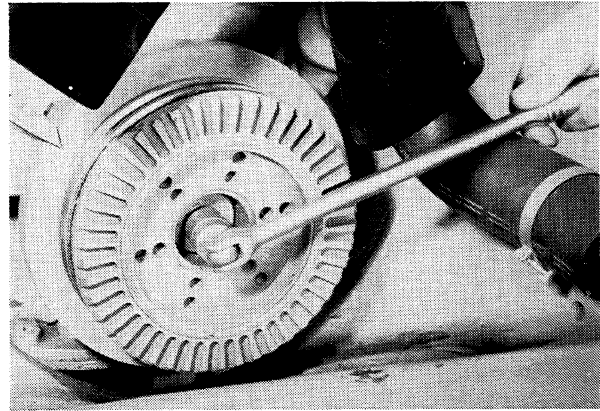


The recommendation for the change interval for the crankshaft damper pulley is 2000 hours maximum. At any time over 1500 hours change the pulley at any engine overhaul or tune-up.

Every 500 hours and during the engine tune-up, visually check the rubber element for areas where the rubber is coming off or cracked. Check the alignment of the marks between the inner and outer units. If the marks move, the damper pulley must be replaced. Go to Step 2 for pulley removal.



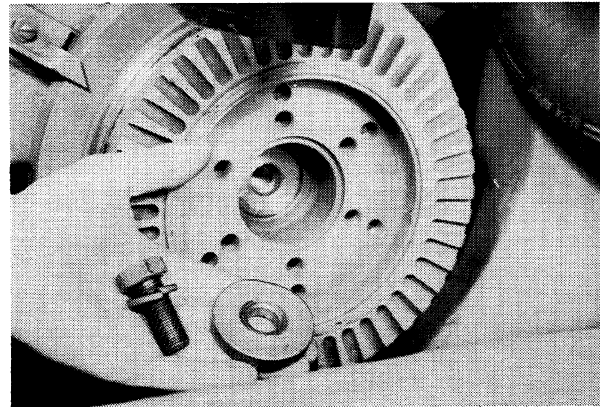
STEP 2



Loosen the pulley to crankshaft bolt.

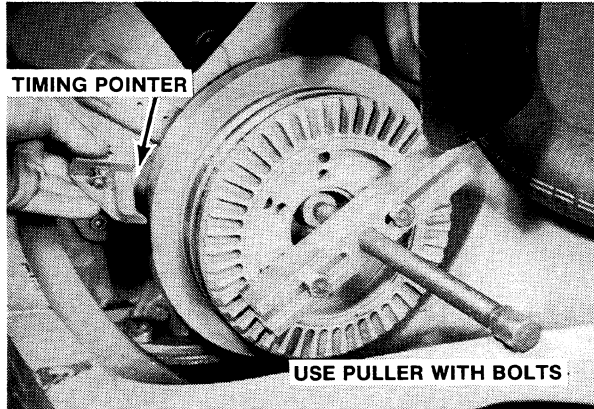
NOTE: See Section 9260 or 9360 of the Service Manual for hood removal and Section 2255 for radiator and alternator belts removal.

STEP 3



Remove the bolt, lockwasher and the retainer washer.

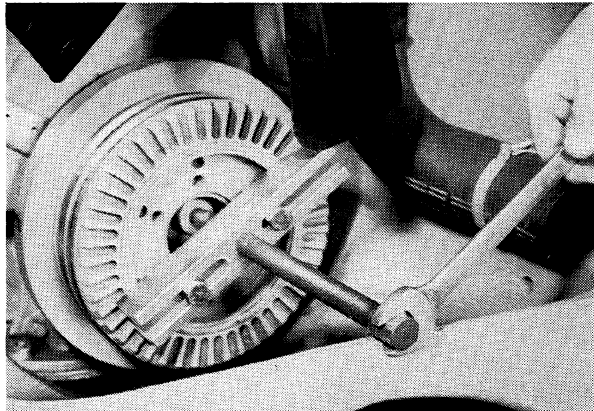
STEP 4



Remove the timing pointer.

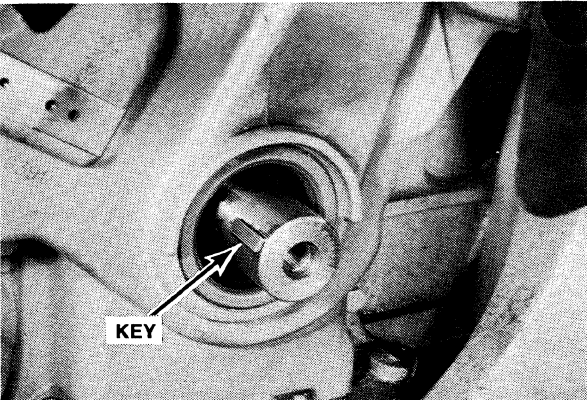
IMPORTANT: Use a puller with bolts to remove the pulley. Do not pull or hit the pulley or the viscous damper. Serious damage to the pulley, damper and the rubber sleeve in the pulley can result.

STEP 5



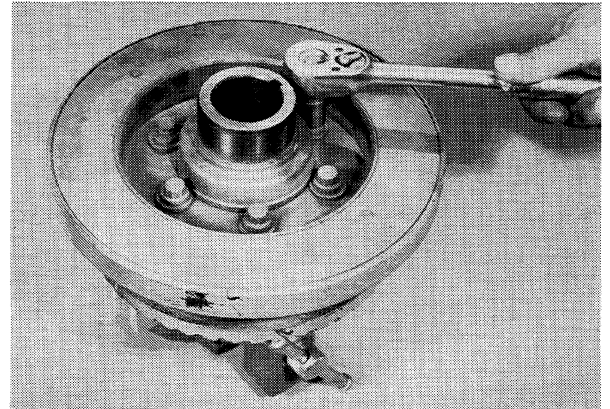
Remove the pulley.

STEP 6



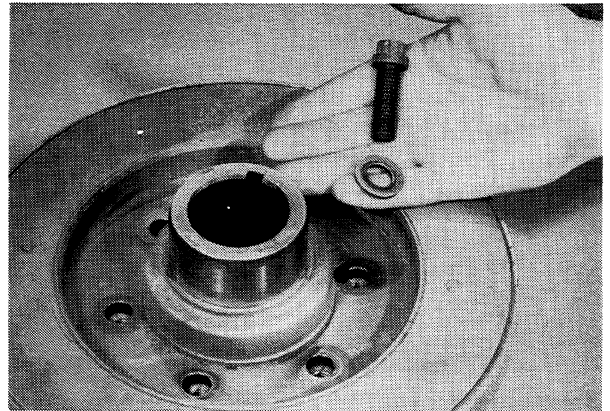
Do not lose the pulley retaining key.

STEP 7



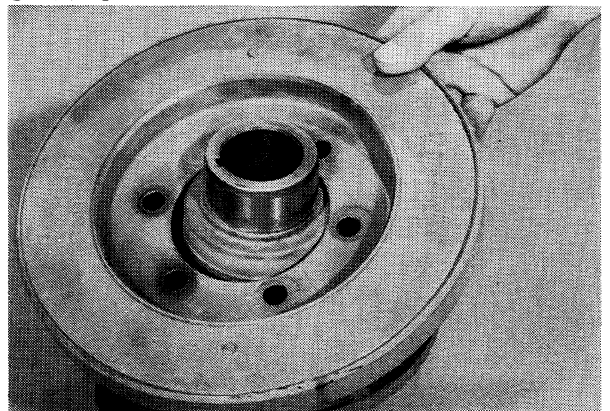
Leave the puller on the pulley and put the puller in a vise. Loosen the bolts that hold the damper (if equipped) to the pulley.

STEP 8



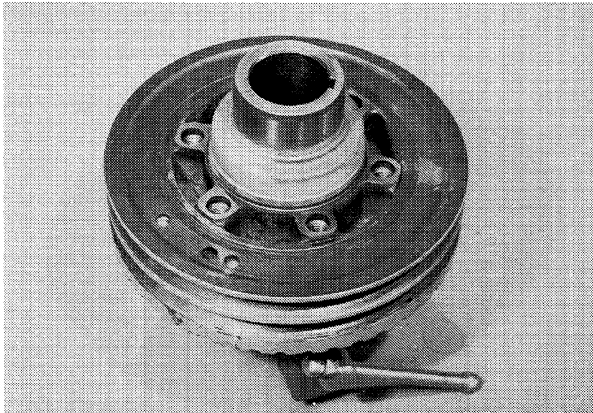
Remove the bolts and the washers.

STEP 9



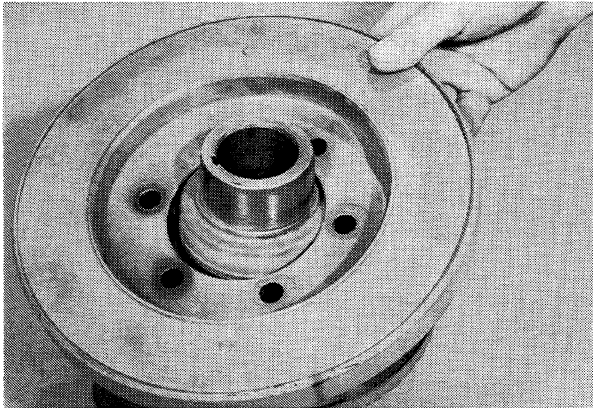
Remove the damper.

STEP 10



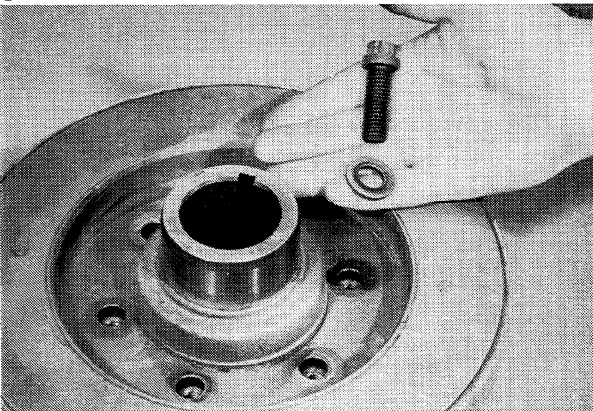
Fasten the puller to the front side of a new pulley and put the puller in a vise.

STEP 11



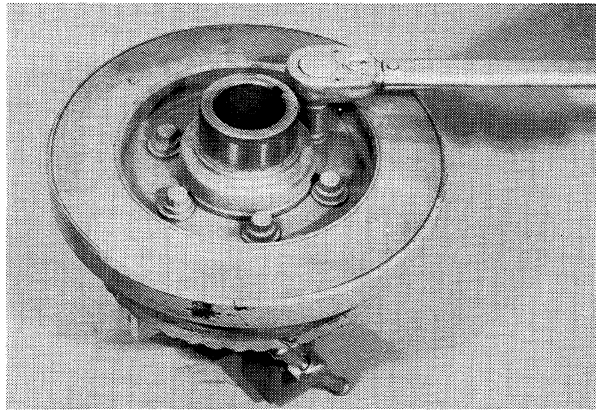
Install the damper to the pulley. The flat side of the damper is against the pulley.

STEP 12



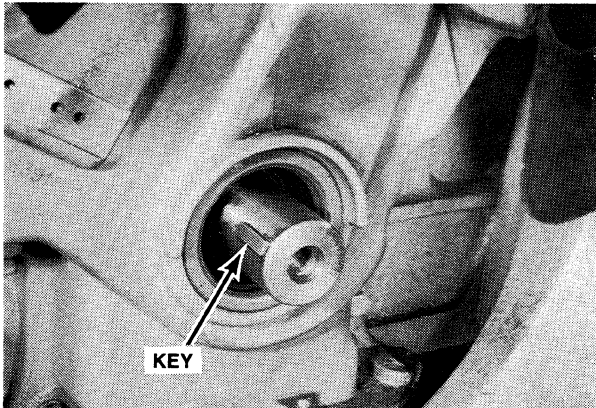
Install the bolts and new hardened washers.

STEP 13



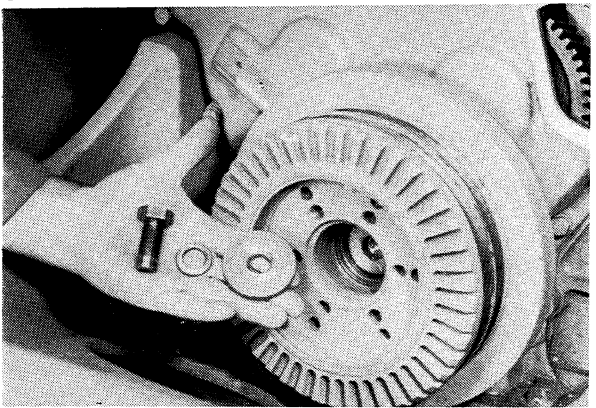
Tighten the bolts to a torque of 110 to 132 ft. lbs. (149 to 179 Nm)(14.9 to 17.9 kgm). Remove the puller.

STEP 14



Replace the key if the key shows damage.

STEP 15



Install the pulley to the crankshaft. Install the bolt, lockwasher and retaining washer.

NOTE: The hub side of the pulley must be put against the engine. Align the crankshaft key with the slot in the pulley.



Suggest:

If the above button click is invalid.

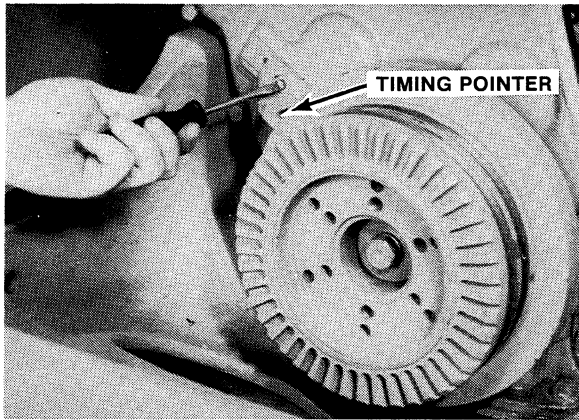
Please download this document

first, and then click the above link

to download the complete manual.

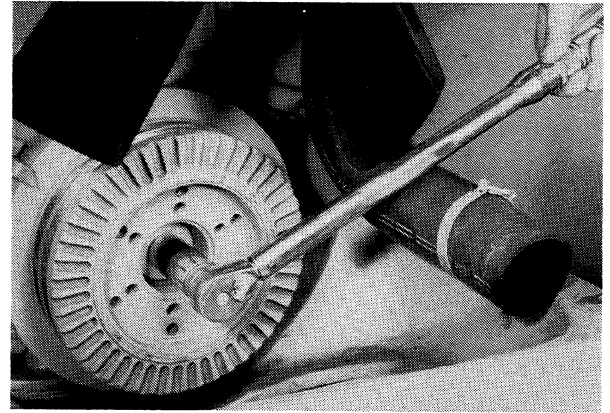
Thank you so much for reading

STEP 16

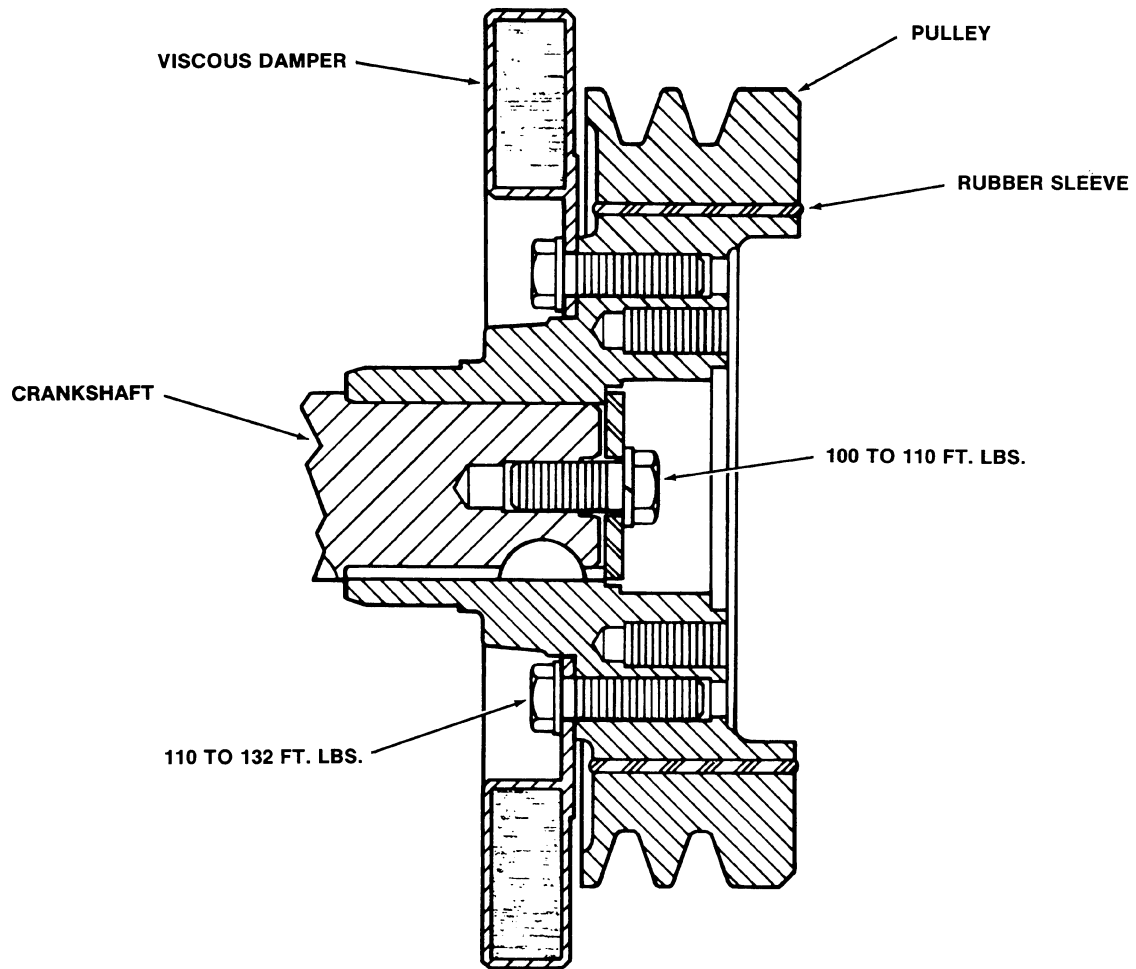


Install the timing pointer.

STEP 17



Tighten the bolt to a torque of 100 to 110 ft. lbs. (136 to 149 Nm)(13.6 to 14.9 kgm).



<https://www.ebooklibonline.com>

Hello dear friend!

Thank you very much for reading.

Enter the link into your browser.

The full manual is available for immediate download.

<https://www.ebooklibonline.com>