

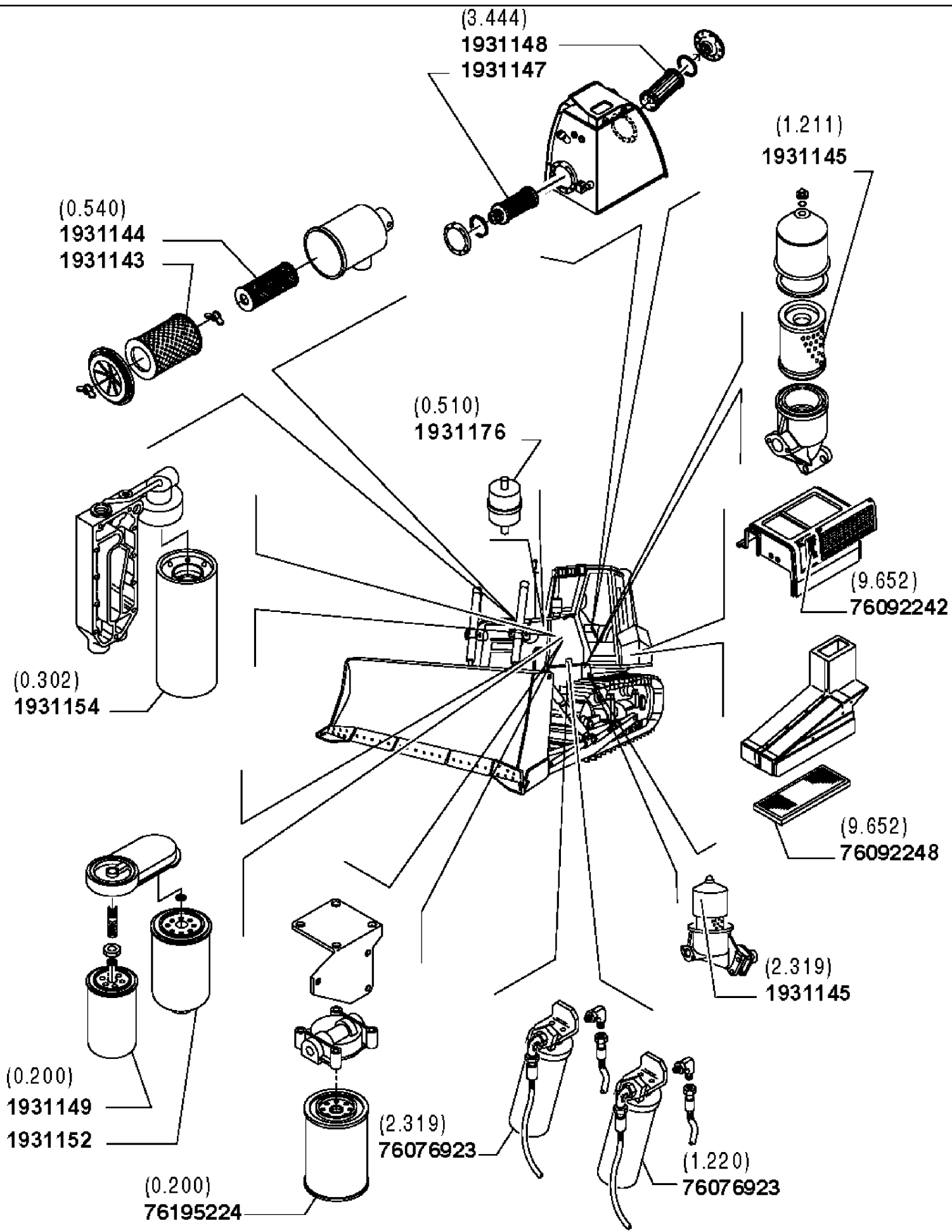


# PARTS CATALOGUE

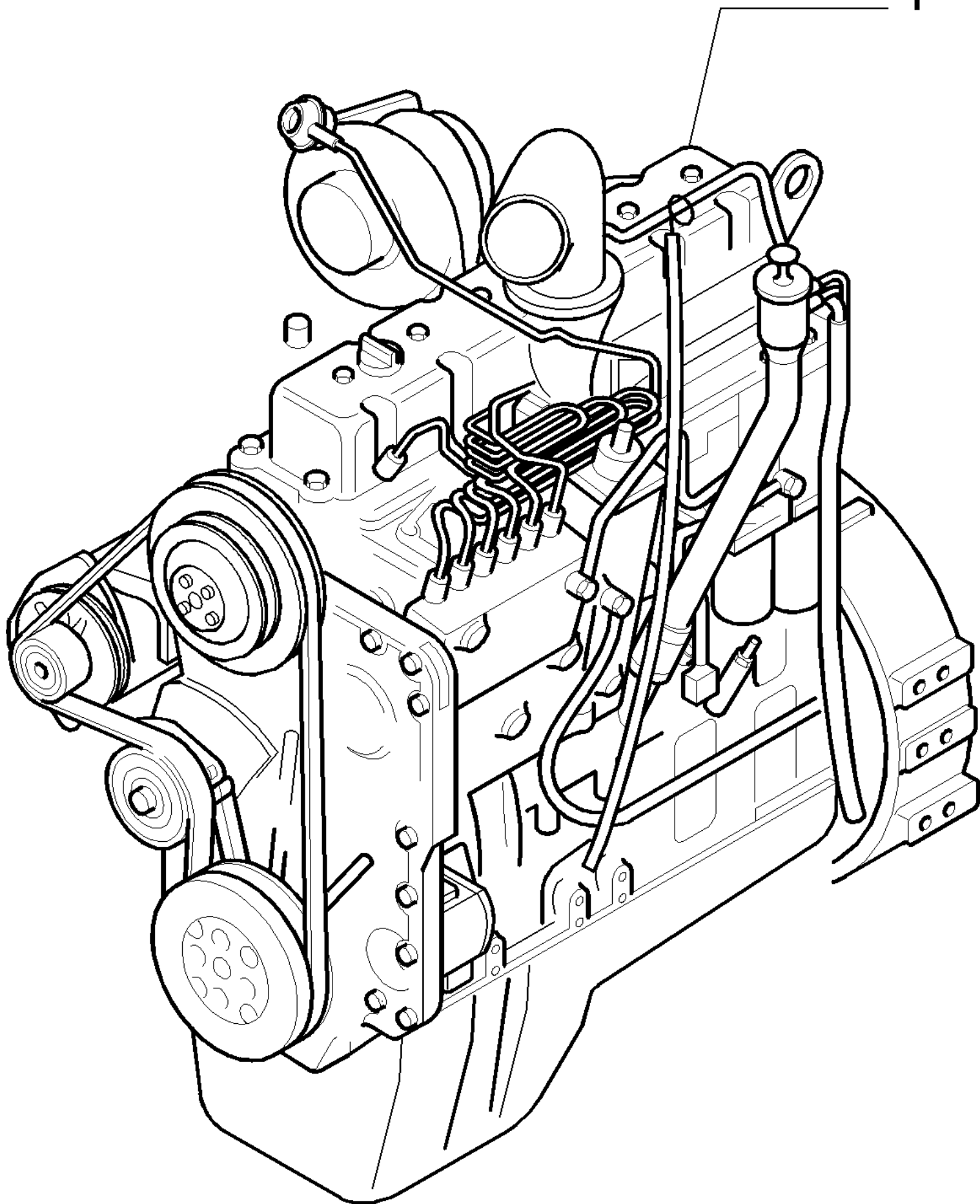
CRAWLER DOZER

1850K

TIER 2



1



**<https://www.ebooklibonline.com>**

Hello dear friend!

Thank you very much for reading.

Enter the link into your browser.

The full manual is available for immediate download.

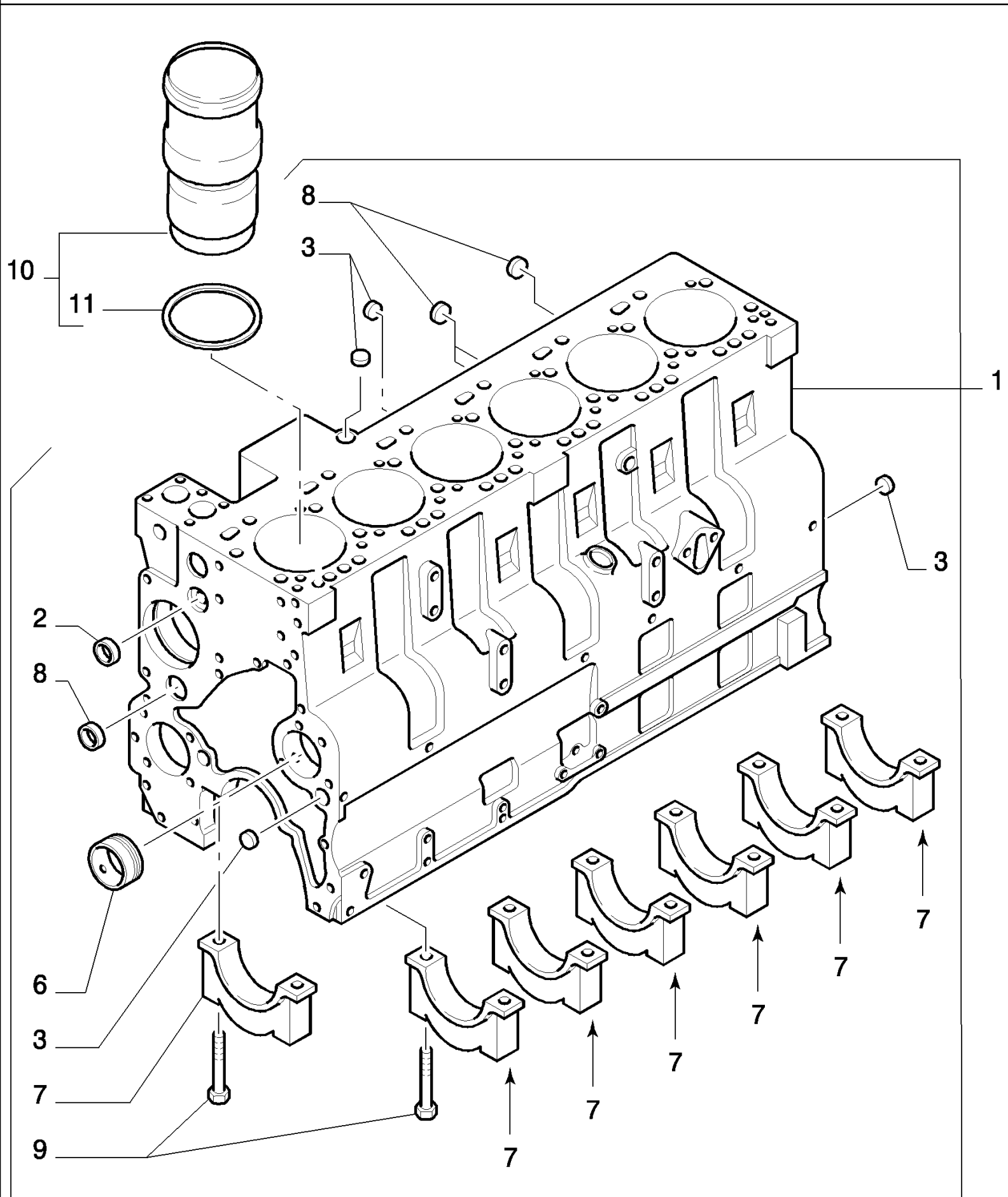
**<https://www.ebooklibonline.com>**

1850K CRAWLER DOZER (TIER II) (3/03- )

0.021(01A) ENGINE - VERSION (03)

Ref	Part Number	Qty	Description
1	76078004	1	ENGINE, - 215HP LGP

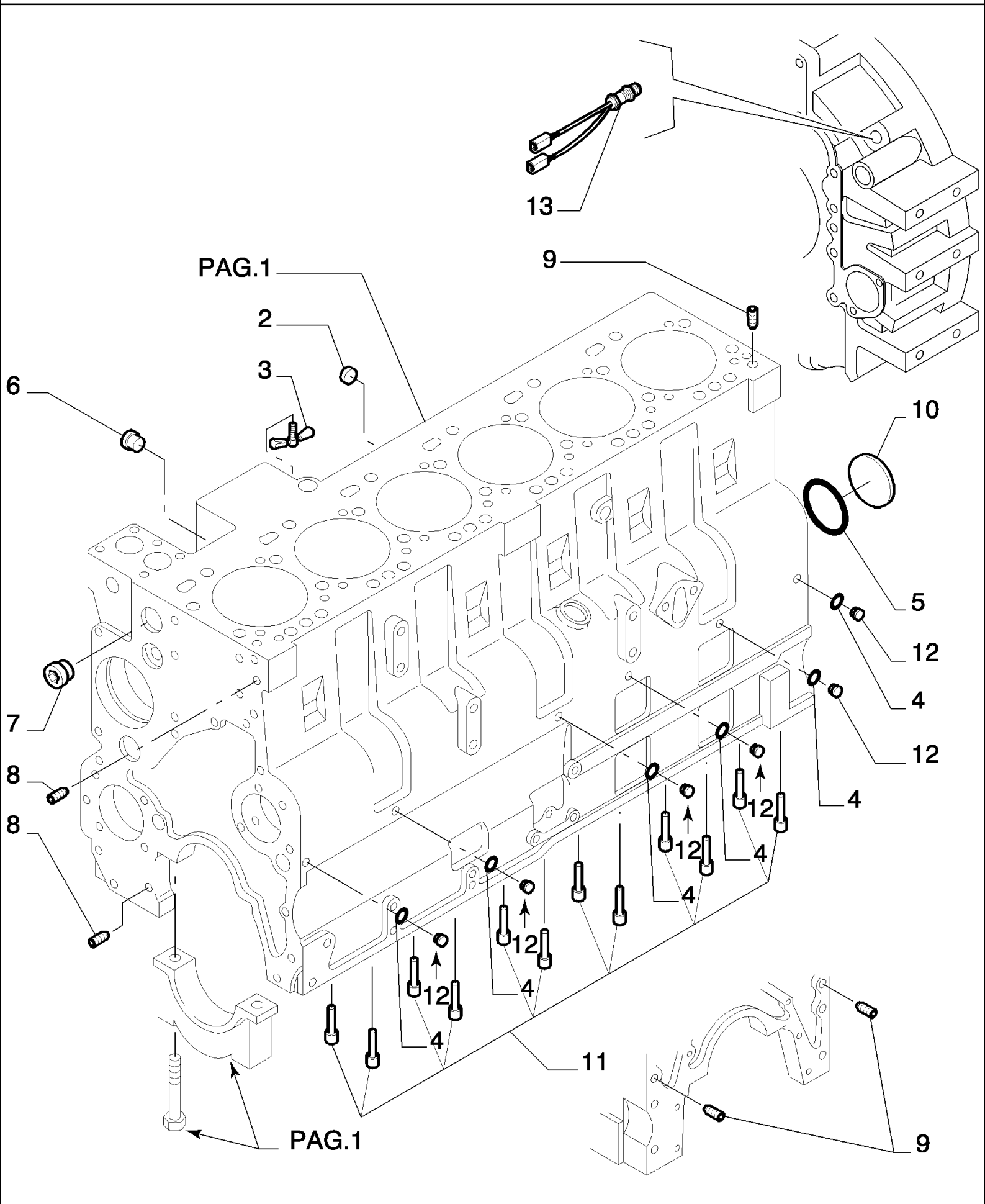
0.040(01) CRANKCASE



## 1850K CRAWLER DOZER (TIER II) (3/03-)

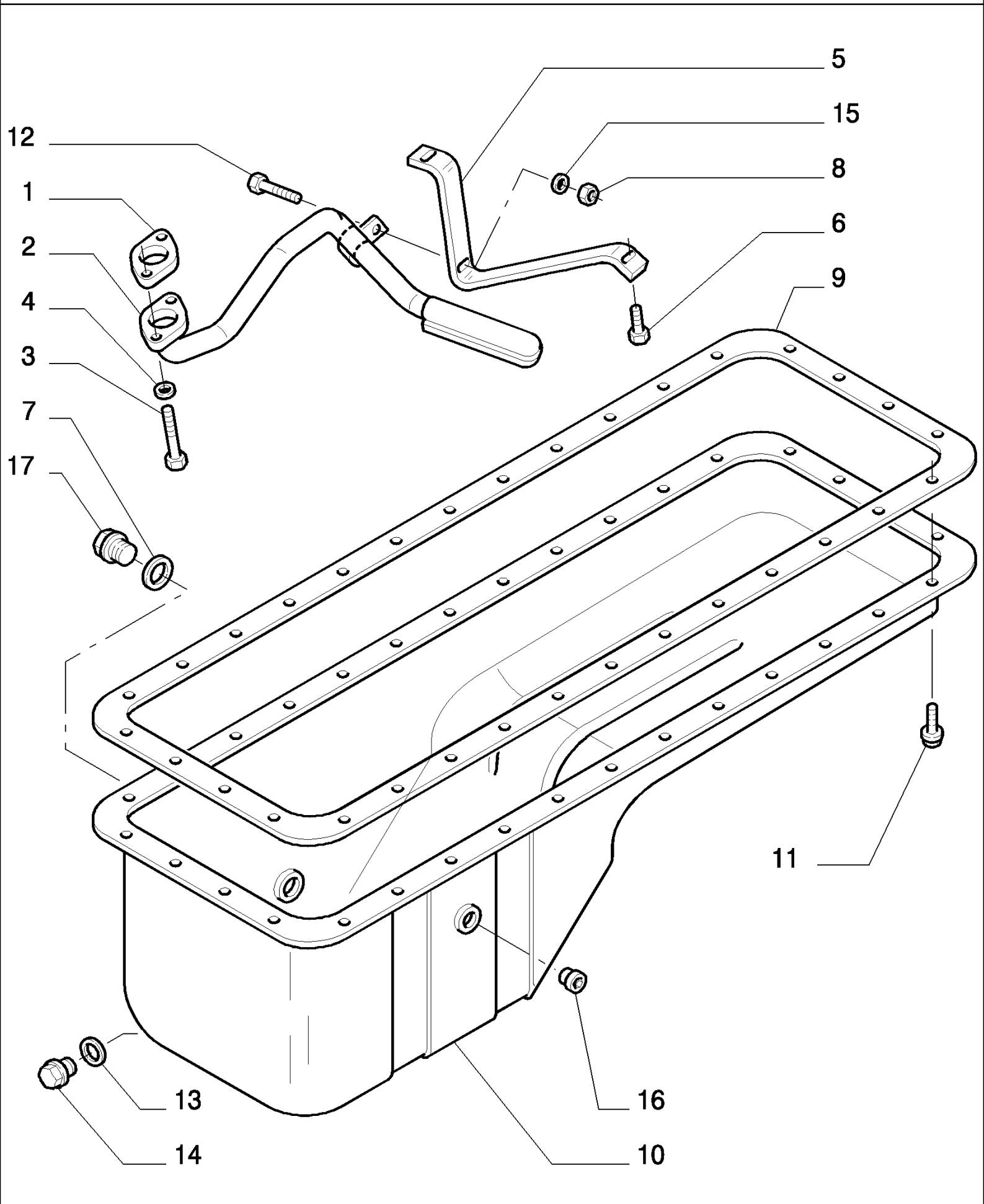
## 0.040(01) CRANKCASE

Ref	Part Number	Qty	Description
1	76195134	1	- ASSY
2	76101887	2	PLUG, 1 1/8 inch
3	75208140	4	PLUG, 1 3/16 inch
6	76193602	7	BUSHING,
7	76194536	7	SUPPORT,
8	75208111	4	KIT,
9	75286310	14	SCREW, 14X2X128
10	76194681	6	LINER, ENGINE CYLINDER, - ASSY
11	76192204	1	RING,



## 0.040(02) CRANKCASE

Ref	Part Number	Qty	Description
2	76102929	1	PLUG,
3	76195278	1	
4	76193304	6	SEAL, 10X1.00
5	76194690	1	
6	76107131	1	PLUG, 3/4 NPT
7	76190786	1	PLUG, 1 NPT
8	75208120	2	PIN, 10X16
9	75208212	4	DOWEL,
10	75208139	1	PLUG,
11	76192719	12	NOZZLE,
12	76193305	6	PLUG,
13	76193563	1	SENSOR, - SPEED

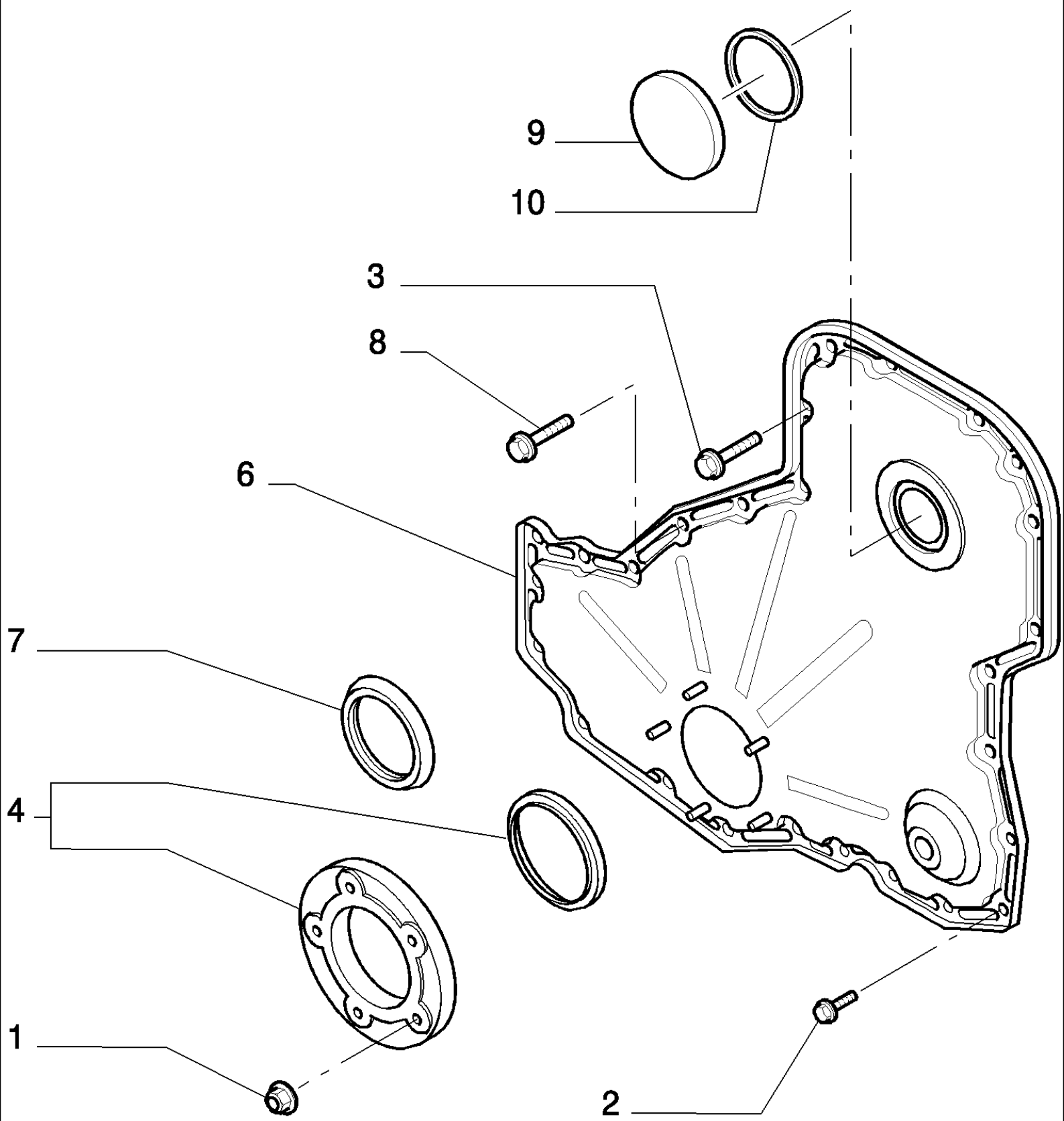


## 1850K CRAWLER DOZER (TIER II) (3/03-)

## 0.042(01) ENGINE OIL SUMP

Ref	Part Number	Qty	Description
1	76192688	1	GASKET,
2	75208175	1	TUBE, RIGID,
3	75208177	2	SCREW, 6X1X30
4	76192473	2	SPACER,
5	76192347	1	BRACKET,
6	75286074	3	SCREW, 6X1X16
7	75208158	1	GASKET,
8	75208170	1	NUT, 6X1.00
9	76194543	1	GASKET,
10	76191721	1	
11	76192367	1	SCREW, 8X1.25X21
12	76191767	1	SCREW, 6X1X20
13	76191693	1	GASKET,
14	76191768	1	PLUG, 18X1.50
15	75286110	1	WASHER, 6
16	76106580	1	PLUG, 3/8
17	76191772	1	PLUG, 22X1.50

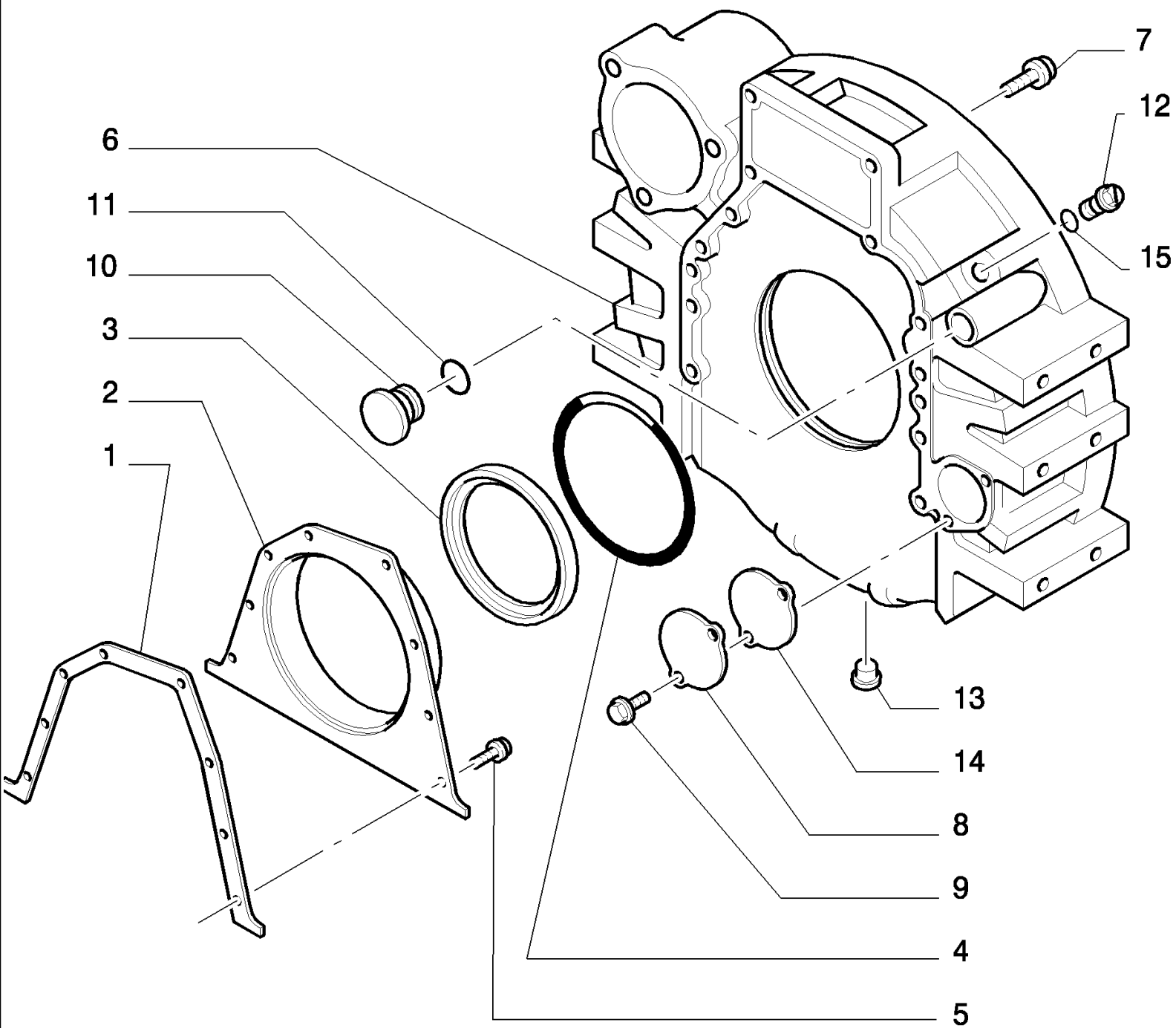
0.043(01) CRANKCASE COVERS



## 0.043(01) CRANKCASE COVERS

Ref	Part Number	Qty	Description
1	76195168	5	
2	76192375	12	SCREW, 8X1.25X16
3	75289681	12	SCREW, 8X1.25X50
4	76195075	1	GASKET,
6	76195170	1	
7	76192446	1	
8	76192320	2	8X1.25X45
9	75208189	1	PLUG,
10	75208188	1	GASKET,

0.043(02) CRANKCASE COVERS

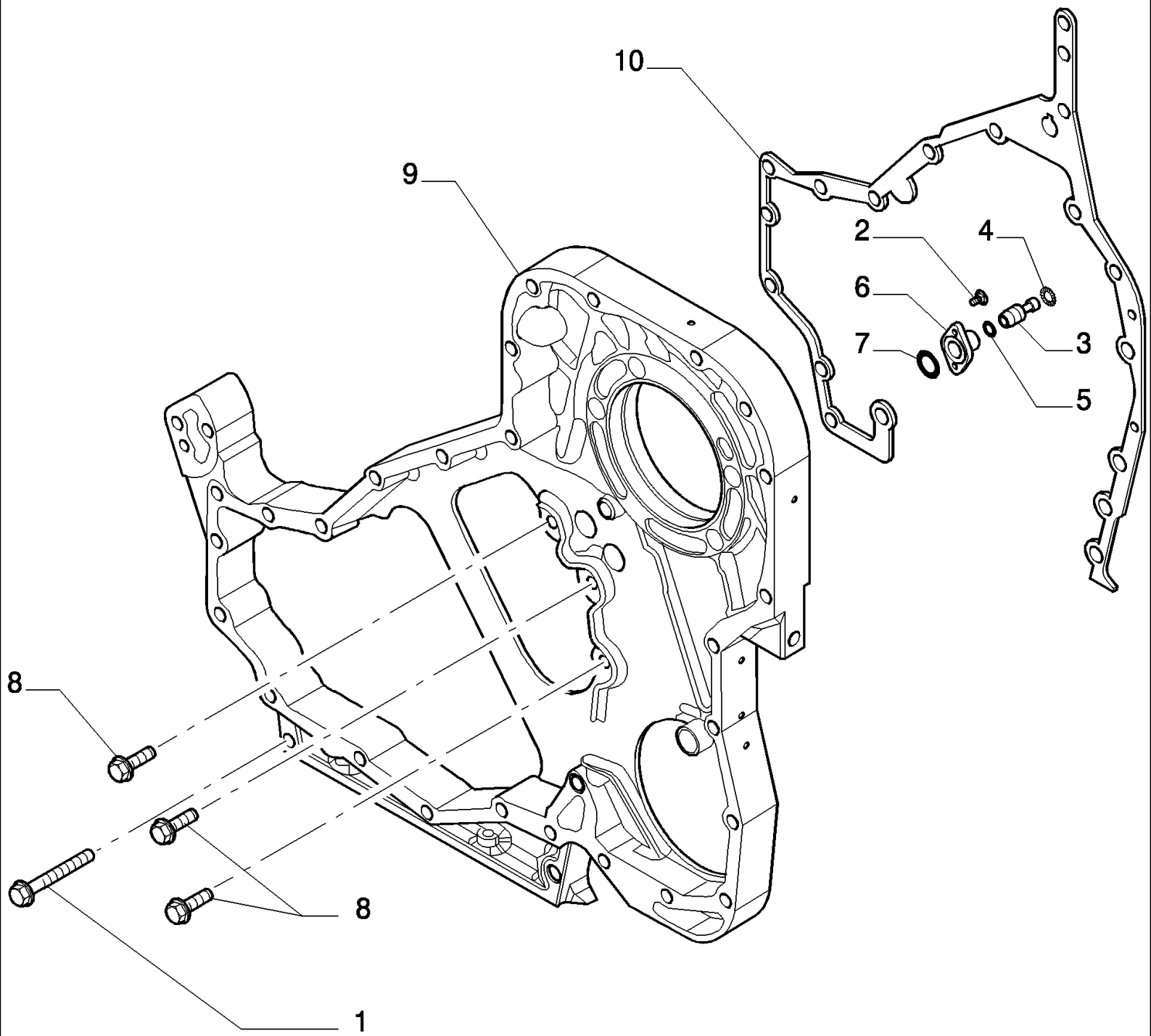


## 1850K CRAWLER DOZER (TIER II) (3/03- )

## 0.043(02) CRANKCASE COVERS

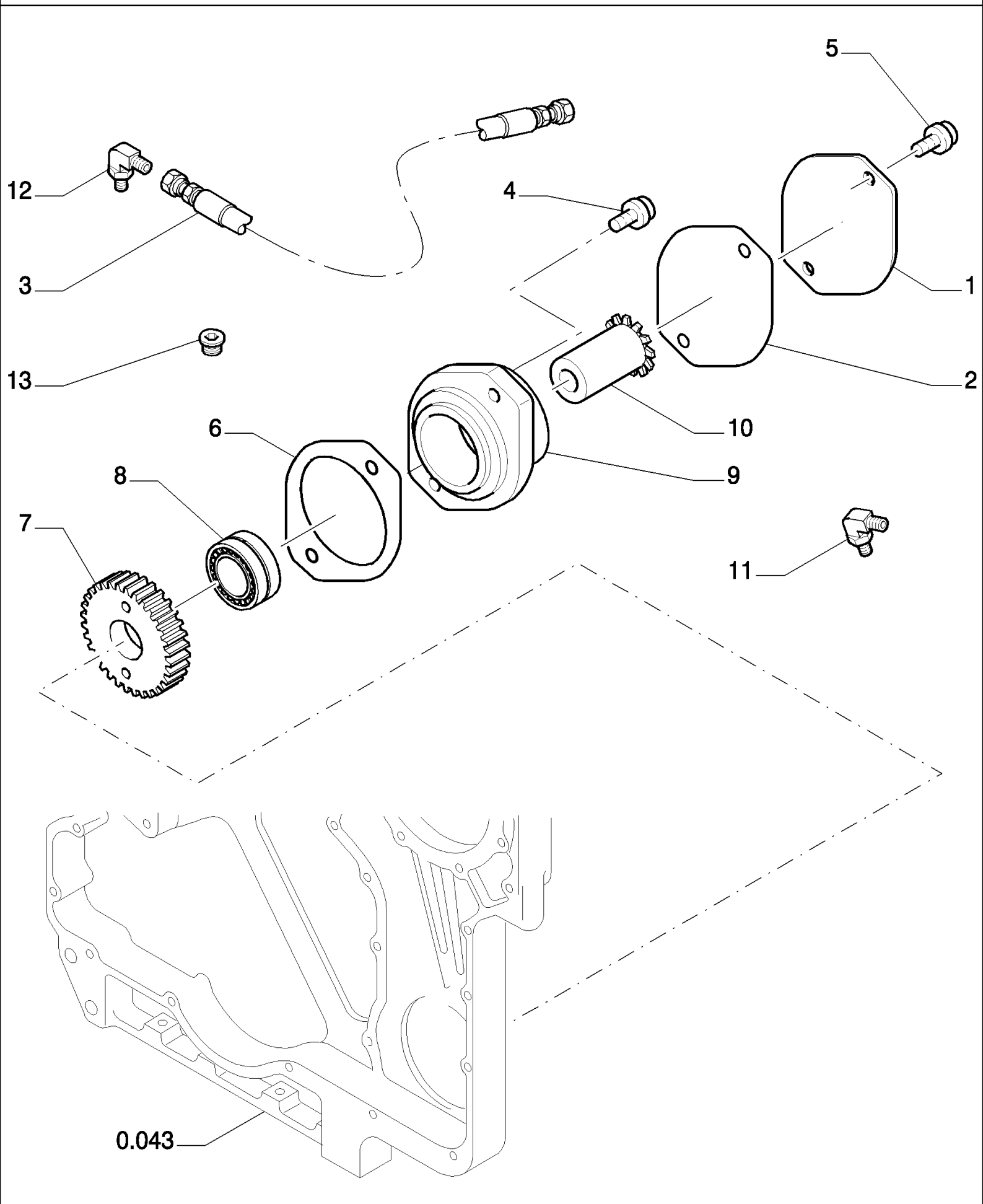
Ref	Part Number	Qty	Description
1	76107832	1	GASKET,
2	76193343	1	COVER,
3	75208111	1	KIT,
4	75208192	1	GASKET,
5	75286074	8	SCREW, 6X1X15
6	76191742	1	BOX, - FLYWHEEL
7	76191759	12	SCREW,
8	75208196	1	COVER,
9	76191758	2	SCREW, 8X1.25X16
10	75208183	1	PLUG,
11	75206842	1	GASKET,
12	76193379	1	PLUG, 3/4-16 UNF
13	76107131	1	PLUG, 3/4 NPT
14	76194728	1	GASKET,
15	76191089	1	O-RING,

0.043(03) CRANKCASE COVERS



## 0.043(03) CRANKCASE COVERS

Ref	Part Number	Qty	Description
1	76195141	3	
2	75208166	2	SCREW, 5X0.8X17
3	75208165	1	PIN,
4	75208164	1	RING,
5	75208163	1	GASKET,
6	75286664	1	BODY,
7	75286100	1	GASKET,
8	75289679	3	SCREW, 8X1.25X20
9	76195140	1	
10	76195142	1	GASKET,

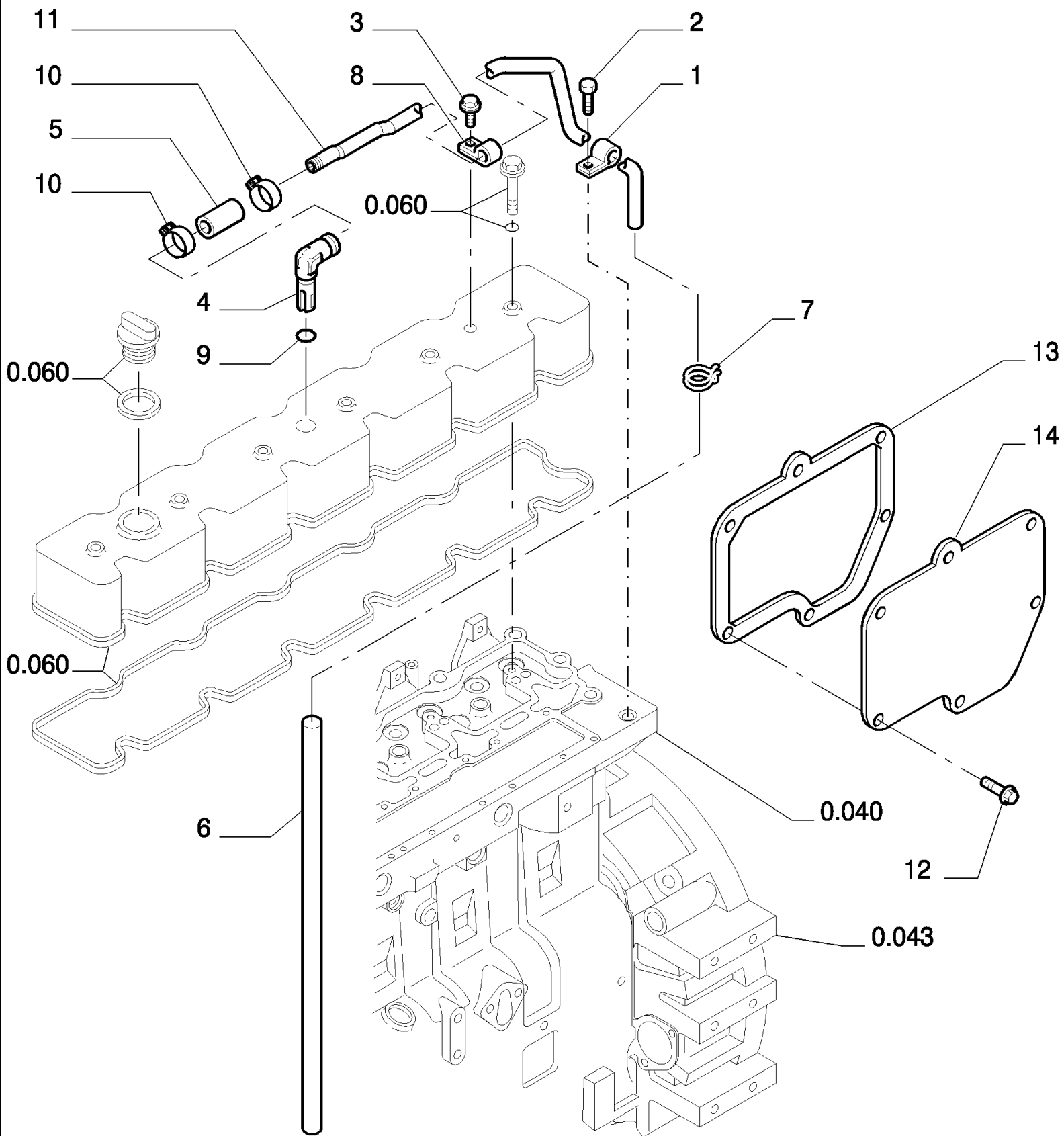


1850K CRAWLER DOZER (TIER II) (3/03- )

0.043(04) CRANKCASE COVERS ENGINE

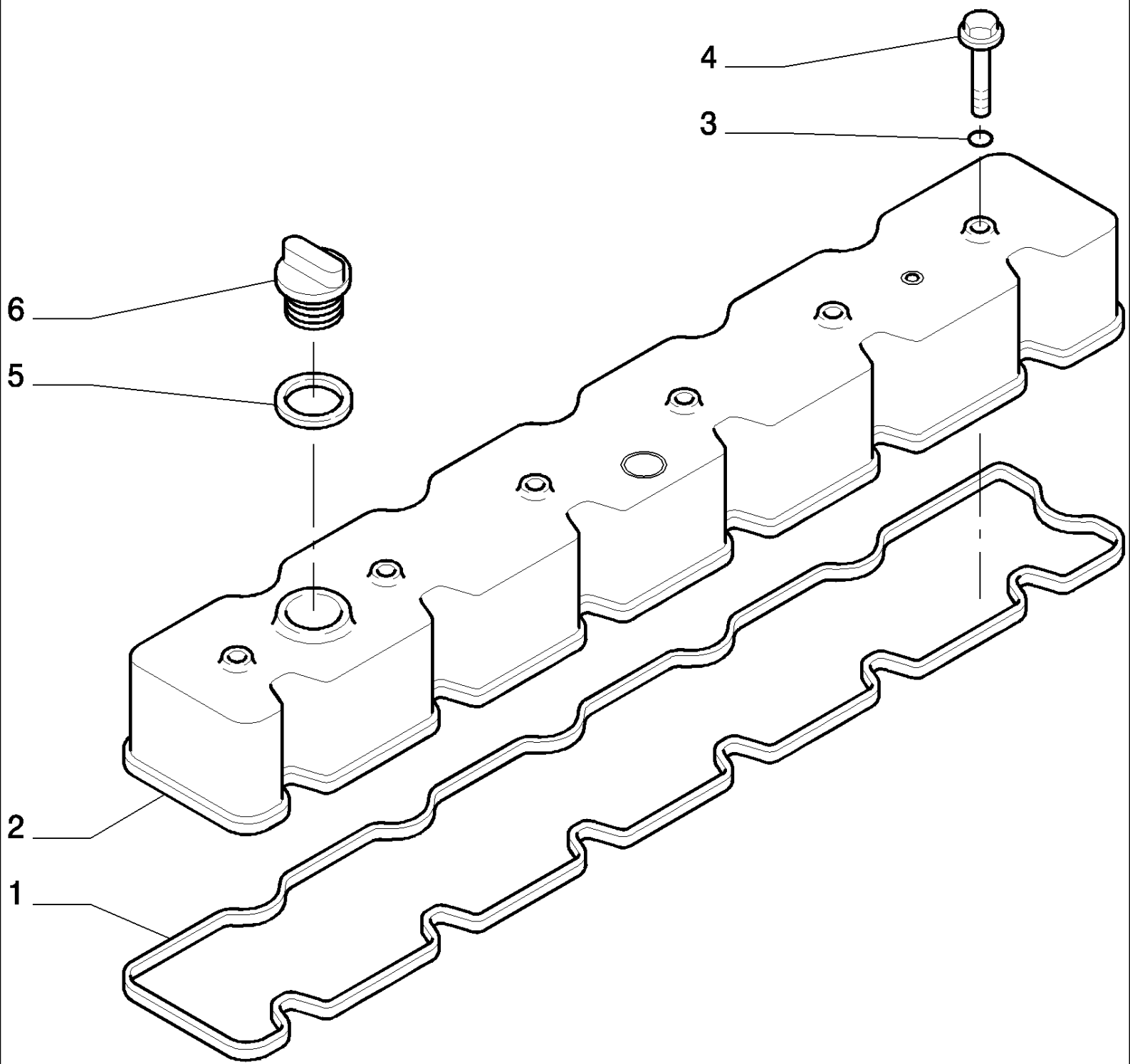
Ref	Part Number	Qty	Description
1	76191709	1	PLATE,
2	76191121	1	
3	76195146	1	
4	76191751	2	SCREW, 12X1.75X35
5	75204973	2	SCREW, 10X1.5X20
6	76195233	1	GASKET,
7	76195149	1	
8	76195147	1	
9	76195151	1	
10	76195148	1	
11	76195150	1	ELBOW,
12	76102445	1	ELBOW,
13	76190784	2	

0.045(01) BREATHER - ENGINE



## 0.045(01) BREATHER - ENGINE

Ref	Part Number	Qty	Description
1	75206809	1	CLAMP,
2	75208347	1	SCREW, 12X1.75X25
3	75208307	1	SCREW, 8X1.25X15
4	76193508	1	CONNECTOR, HYD.,
5	76192273	1	HOSE, FLEXIBLE,
6	76192642	1	HOSE,
7	75208304	1	CLAMP,
8	75208308	1	CLAMP,
9	76194693	1	SEAL,
10	76194692	2	COLLAR,
11	75208301	1	TUBE, RIGID,
12	75286074	6	SCREW, 6X1.00X16
13	76195143	1	
14	76195144	1	



## 1850K CRAWLER DOZER (TIER II) (3/03-)

## 0.060(01) CYLINDER HEAD

Ref	Part Number	Qty	Description
1	75208126	1	GASKET,
2	76192709	1	COVER,
3	76192710	6	O-RING, 1.78X9.25
4	76194753	6	SCREW, 8X1.25X56
5	75208210	1	RING,
6	75208208	1	COVER,



## 1850K CRAWLER DOZER (TIER II) (3/03- )

## 0.060(02) CYLINDER HEAD

Ref	Part Number	Qty	Description
1	76194647	1	
2	76192452	1	
3	76192359	5	
4	75208216	2	PLUG,
5	76192469	12	
6	76192477	6	SEAT/SLOT,
7	76191464	6	
8	75286706	1	PLUG,
9	76191835	1	
10	76190784	1	
11	76194632	6	CUP,
12	76192492	6	VALVE, ENGINE, INLET, STD,
13	75208232	12	COTTER, ROCKER ARM,
14	76107823	6	VALVE, ENG EXHAUST, STD,
15	75208158	2	GASKET,
16	76191772	2	PLUG,
17	76195187	12	
18	76191390	12	CUP,
20	75286707	1	PLUG,
22	76194729	1	GASKET,
23	75286698	12	SCREW, 14X2X80
24	75286699	14	SCREW, 14X2X160

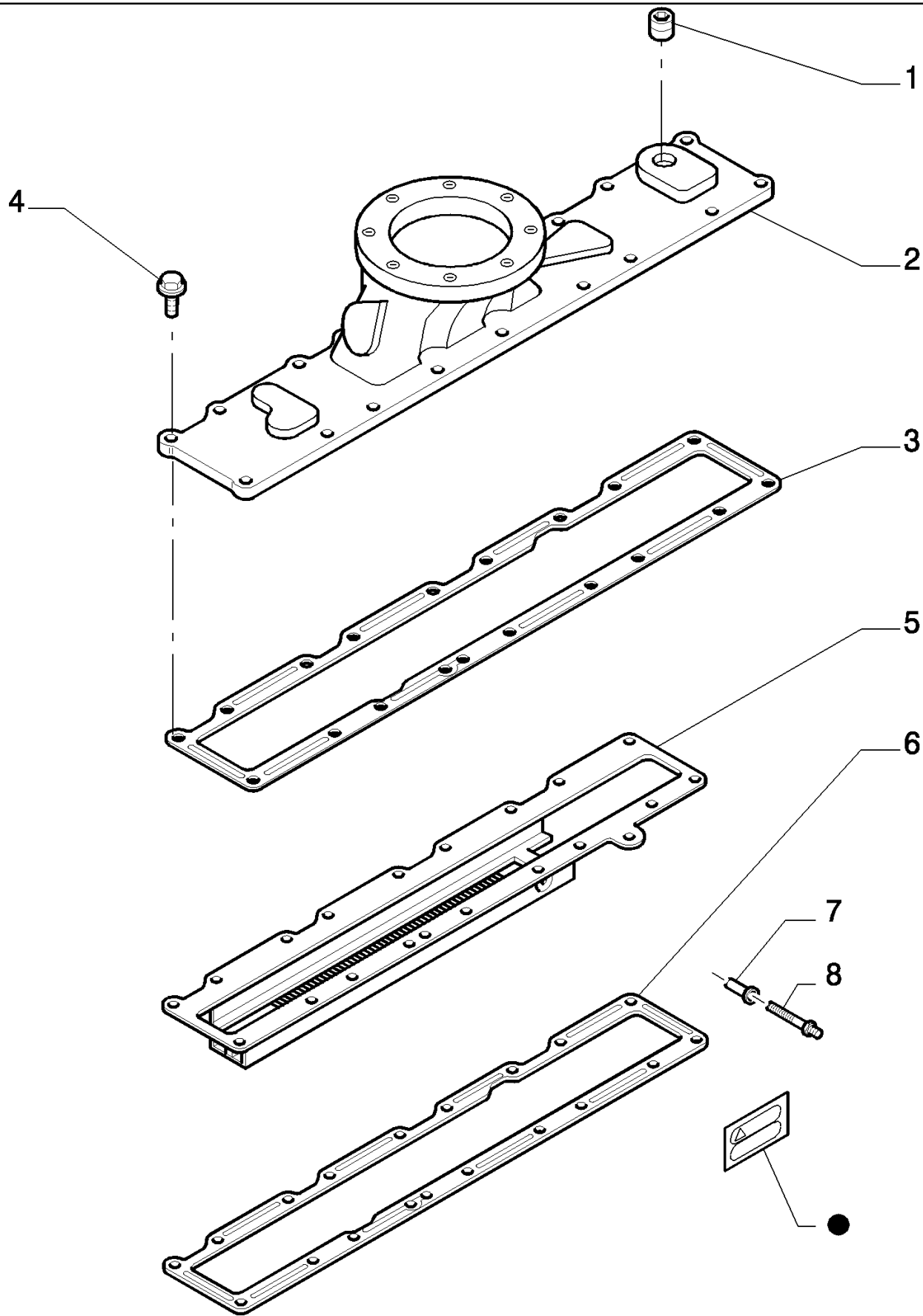


## 1850K CRAWLER DOZER (TIER II) (3/03- )

## 0.060(03) CYLINDER HEAD

Ref	Part Number	Qty	Description
1	75208244	12	SCREW, 10X1.5X65
2	75208245	6	SUPPORT,
3	75208249	12	ROD,
4	75208247	6	SUPPORT,
5	75208226	12	ROCKER ARM, - ASSY
6	76191784	1	NUT, 3/8-24
7	76195123	1	SCREW,
8	75208229	12	WASHER,
9	76192201	6	SHAFT,
10	76192631	2	RIVET,
11	75208228	12	WASHER,
12	76191499	1	HOSE, FLEXIBLE,
13	75206820	12	RING,

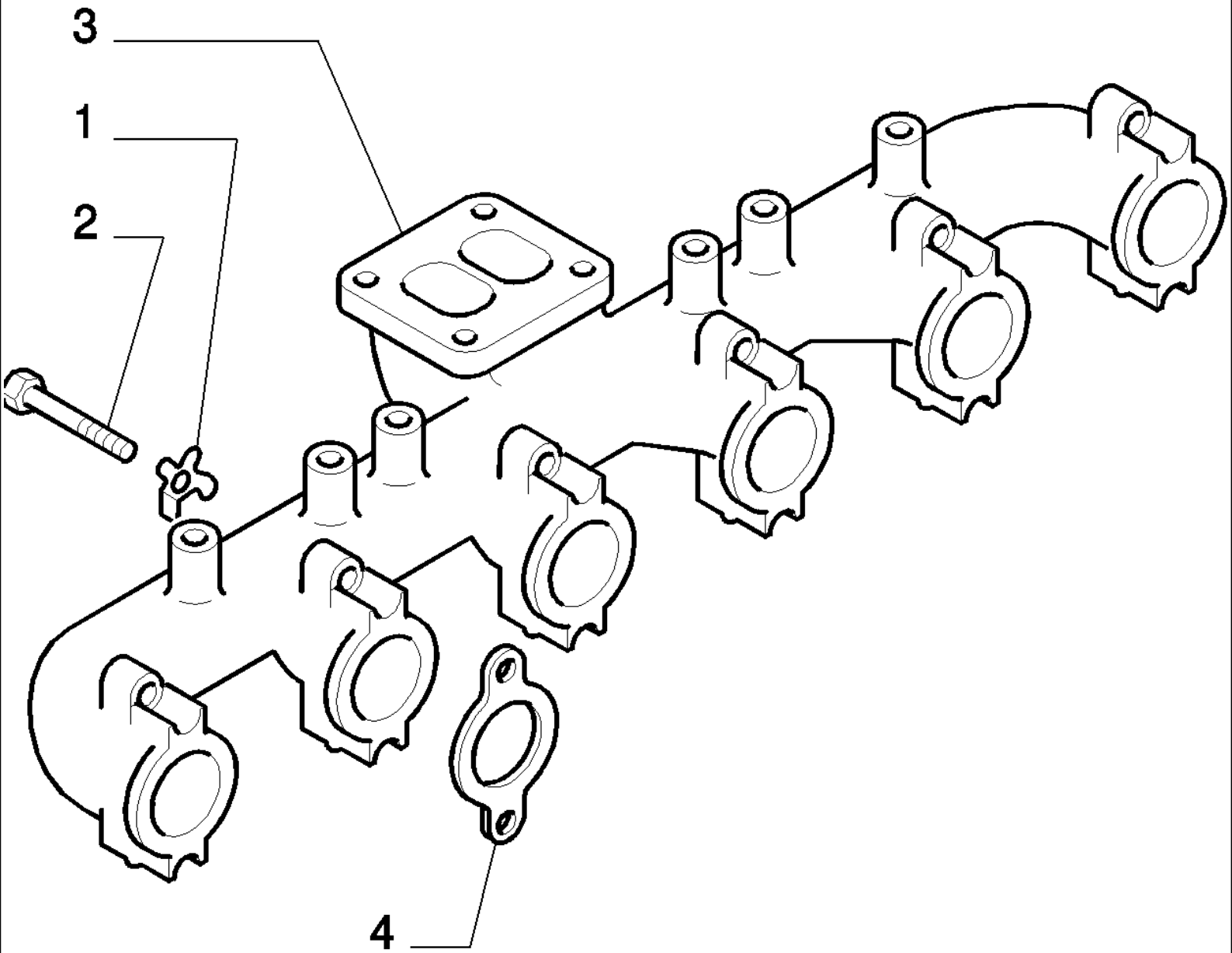
0.071(01) INTAKE MANIFOLD



PARTS MARKED ● ARE NOT SUPPLIED AS SPARES  
I PARTICOLARI CONTRASSEGNA TI CON ● NON  
VENGONO FORNITI DI RICAMBIO

## 0.071(01) INTAKE MANIFOLD

Ref	Part Number	Qty	Description
1	76190784	1	
2	76195173	1	
3	76195083	1	GASKET,
4	76195174	18	
5	76193616	1	THERMOSTART,
6	76195083	1	GASKET,
7	76192622	1	BUSHING,
8	76192623	1	SCREW,

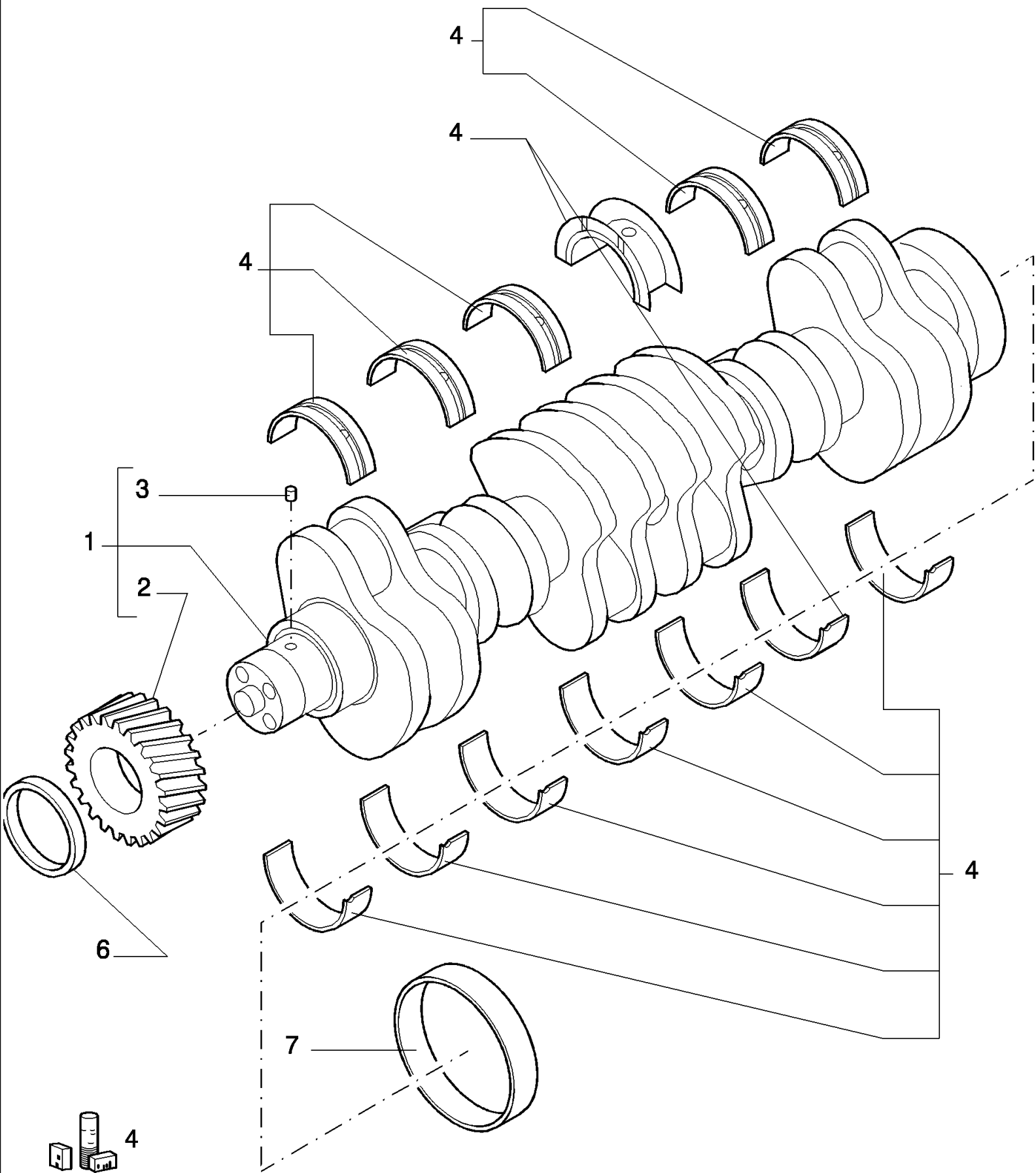


## 1850K CRAWLER DOZER (TIER II) (3/03- )

## 0.077(01) EXHAUST MANIFOLD

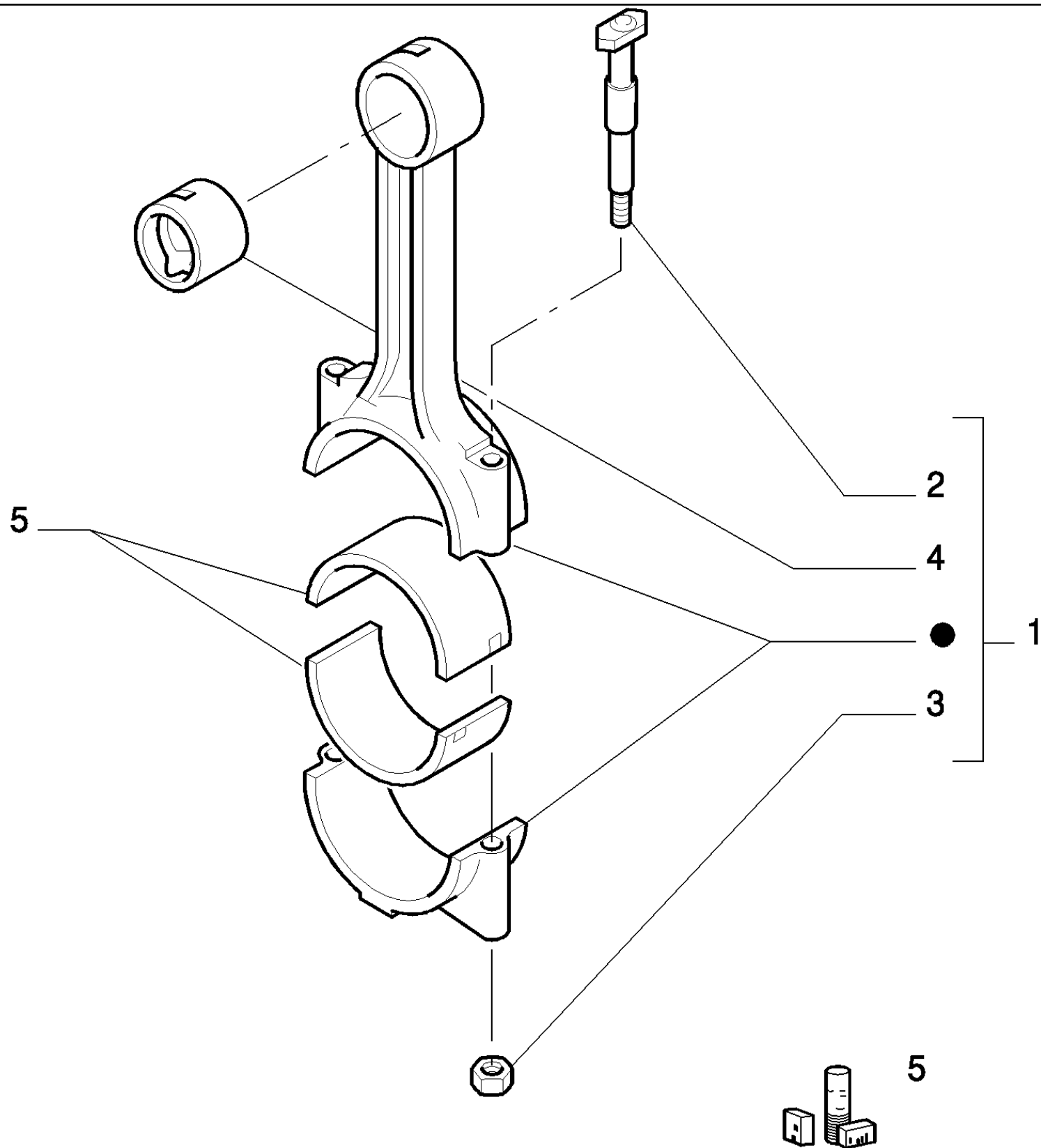
Ref	Part Number	Qty	Description
1	75286617	12	PLATE, LOCKING,
2	76192480	12	BOLT, 10X1.50X70
3	76195211	1	(01-02-03-04)
3	76195243	1	(05)
4	76194651	6	

0.080(01) CRANKSHAFT



## 0.080(01) CRANKSHAFT

Ref	Part Number	Qty	Description
1	76191568	1	CRANKSHAFT, - ASSY
2	76192319	1	GEAR,
3	75208356	1	PIN,
4	76194637	1	
4	76193599	1	KIT, (-0.000)
4	76194518	1	KIT, (-0.254)
4	76194636	1	SET OF MAIN BRGS.STD, (-0.508)
4	76194638	1	
6	76195261	1	- FRONT
7	76193590	1	RING,



PARTS MARKED ● ARE NOT SUPPLIED AS SPARES  
I PARTICOLARI CONTRASSEGNA TI CON ● NON  
VENGONO FORNITI DI RICAMBIO

## 1850K CRAWLER DOZER (TIER II) (3/03- )

## 0.081(01) CONNECTING ROD

Ref	Part Number	Qty	Description
1	75208204	6	ROD, CONNECTING, - ASSY
2	76192479	2	SCREW,
3	76193483	2	NUT,
4	76191462	1	BUSHING,
5	75206861	R	HALF BEARING, (-0.010)
5	75206862	R	HALF BEARING, (-0.020)
5	75206863	R	HALF BEARING, (-0.030)
5	75208088	12	CONN. ROD SHELL, (-0.000)
5	75206864	12	HALF BEARING,



**Suggest:**

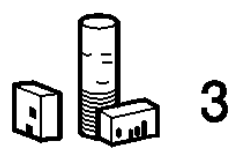
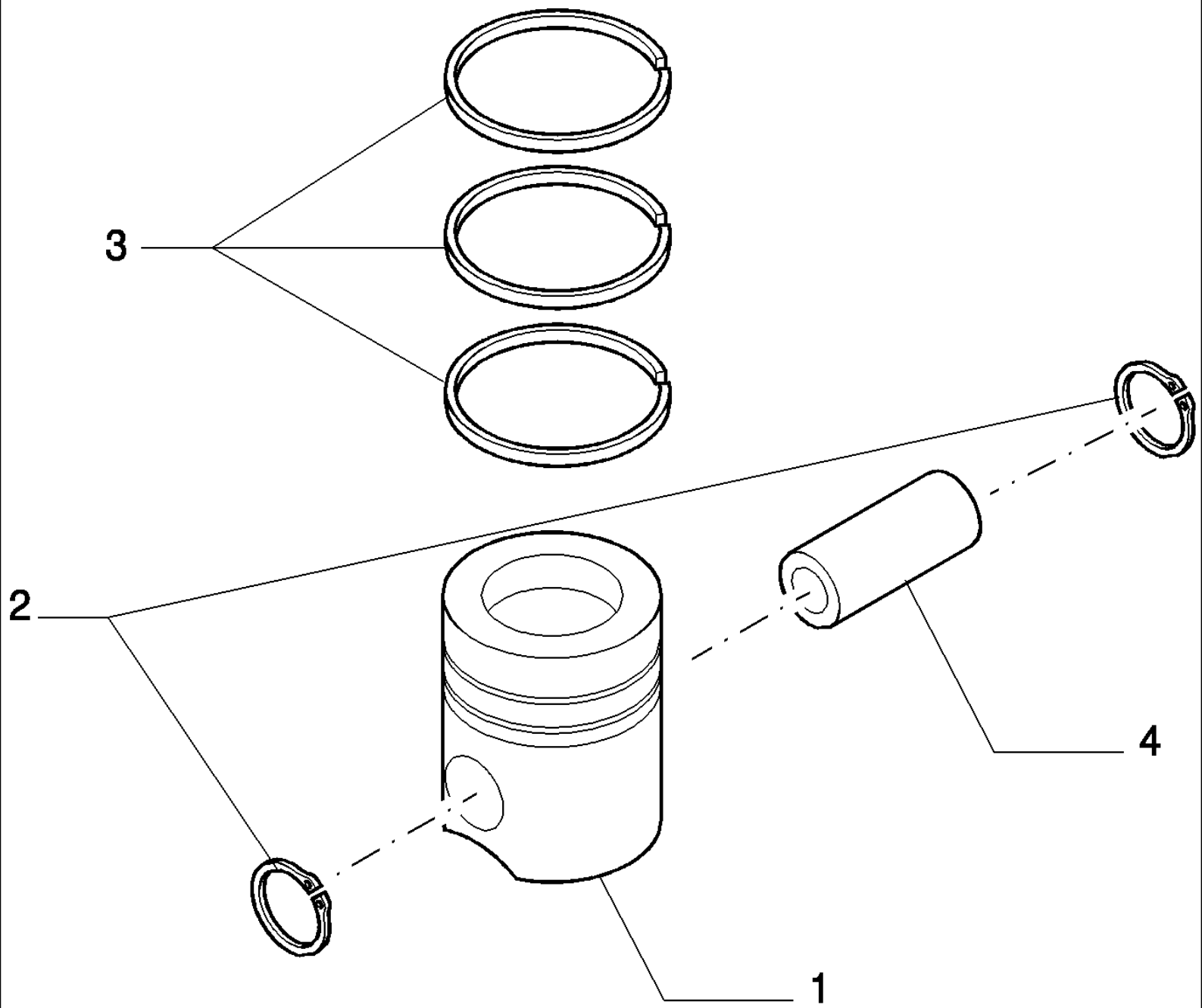
**If the above button click is invalid.**

**Please download this document**

**first, and then click the above link**

**to download the complete manual.**

**Thank you so much for reading**



**<https://www.ebooklibonline.com>**

Hello dear friend!

Thank you very much for reading.

Enter the link into your browser.

The full manual is available for immediate download.

**<https://www.ebooklibonline.com>**