

588 crawler and wheeled hydraulic excavators

Table of contents

DIVISION : SECTION	SECTION NO	REFERENCE NO
1 GENERAL INFORMATION		
Safety, General Information and Standard Torque Settings.....	1001	7-56942GB
Specifications (Crawler Excavators)	1002	7-80591GB
Specifications (Wheeled Excavators)	1002	7-80601GB
2 ENGINE		
Engine removal and installation	2002	7-80610GB
Radiator and oil cooler	2003	7-80621GB
Engine specifications	2401	**
Cylinder head and valve assembly	2415	**
Short engine block	2425	**
Lubrication system	2445	**
Cooling system	2455	**
Turbocharger.....	2465	**
Turbocharger troubleshooting	2565	**
3 FUEL SYSTEM		
Circuit and fuel filter	3410	**
CAV injection pump.....	3411	**
BOSCH injection pump	3412	**
Fuel injector	3412	**
BOSCH ANEROID injection pump.....	3416	**
4 ELECTRICAL SYSTEM		
Electrical schematics (Crawler Excavators) - before November 99.....	4001	7-80630GB
Electrical schematics (Wheeled Excavators) - before November 99	4001	7-80640GB
Electrical schematics (Crawler Excavators)	4001	7-26571GB
Electrical schematics (Wheeled Excavators)	4001	7-26541GB
Starter motor	4003	7-58691GB
Alternator	4004	7-58701GB
Anti - start device tool	4020	7-29370GB
5 UNDERCARRIAGE		
Set of tracks (Crawler excavators).....	5002	7-80650GB
6 DRIVE TRAIN		
Travel reduction gear and brake (Crawler excavators)	6002	7-80661GB
Swing reduction gear and brake	6003	7-80671GB
Front axle and service brake (Wheeled excavators).....	6004	7-80681GB
Rear axle and service brake (Wheeled excavators)	6005	7-80691GB
Gearbox and parking brake (Wheeled excavators)	6008	7-80701GB
Twin Wheels.....	6020	7-26170GB
7 UNDERCARRIAGE HYDRAULICS		
Hydraulic travel motor (Mono-speed crawler excavators).....	7002	7-80711GB
Hydraulic travel motor (Two-speed crawler excavators)	7003	7-80721GB
Hydraulic travel motor (Two-speed wheeled excavators)	7003	7-80731GB
Travel control valve	7030	7-80741GB
Travel, stabilizer or dozer blade control valve (Wheeled excavators).....	7031	7-84151GB
Steering, stabilizer, dozer blade and axle locking cylinders (Wheeled excavators).....	7080	7-80761GB

** Refer to the Engine Service Manual

DIVISION/SECTION	SECTION NO	REFERENCE NO
8 UPPERSTRUCTURE HYDRAULICS		
Checks, adjustments and hydraulic schematics (Wheeled Excavators).....	8001	7-80771GB
Checks, adjustments and hydraulic schematics (Wheeled excavators)	8001	7-80781GB
Hydraulic swivel (Crawler Excavators).....	8011	7-80791GB
Hydraulic swivel (Wheeled Excavators).....	8011	7-80801GB
Hydraulic pumps	8020	7-80810GB
Attachment control valve.....	8031	7-80821GB
Swing control valve	8033	7-80831GB
Rotary control valve (Orbitrol) (Wheeled excavators).....	8037	7-80841GB
Hydraulic swing motor and safety forced-feed block	8040	7-80851GB
Attachment and swing control block (Control lever).....	8050	7-80261GB
Travel and option control block (Pedal valve, wheeled excavators)	8051	7-80270GB
Travel hand control block (Inching, crawler excavators)	8052	7-80870GB
Direction of travel inverter control block (Inching, wheeled excavators)	8053	7-80290GB
Travel control block (Wheeled excavators)	8054	7-80301GB
Brake unit (Wheeled excavators).....	8060	7-80882GB
Parking brake solenoid valve	8061	7-80952GB
Electro-control valve block (Crawler excavators).....	8070	7-80891GB
Electro-control valve block (Wheeled excavators)	8071	7-80901GB
Attachment cylinders.....	8080	7-80910GB
Safety valves.....	8081	7-26640GB
Large format hydraulic and electrical schematic (Crawler excavators).....	Kit	7-26800GB
Large format hydraulic and electrical schematic (Wheeled excavators).....	Kit	7-26790GB
9 UPPERSTRUCTURE		
Upperstructure and turntable bearing	9002	7-58932GB
Cab	9004	7-58191GB

NOTA : La Société CASE se réserve le droit de modifier sans avis préalable les caractéristiques et la conception de la machine sans obligation d'y procéder sur la machine déjà vendue.

La description des modèles déclinés dans ce manuel a été établie à partir des caractéristiques techniques connues à la date de conception de ce document.

Section

1001

**SAFETY, GENERAL INFORMATION
AND TORQUE SPECIFICATIONS**

<https://www.ebooklibonline.com>

Hello dear friend!

Thank you very much for reading.

Enter the link into your browser.

The full manual is available for immediate download.

<https://www.ebooklibonline.com>

SAFETY



WARNING: This symbol means **WARNING ! BE VIGILANT ! YOUR SAFETY IS AT RISK**. The message that follows the symbol contains important safety information. Read it carefully. Be sure you understand the possible risks of injury or even death.

To avoid all risks, always follow the safety notes contained in this section and throughout this manual.

Put the warning tag shown below on the key for the keyswitch when servicing or repairing the machine. One warning tag is supplied with each machine. Additional tags, Part Number 321-4614, are available from your service parts supplier.



PDG0328



WARNING: Read the Operator's Manual carefully and make sure you understand how to operate the controls correctly.



WARNING: Never operate the machine and attachment controls unless you are seated in the operator's seat. If you are not in the operator's seat, you run the risk of serious injury.



WARNING: The machine is built to carry the operator only. Do not allow passengers to ride on the machine.



WARNING : Prior to starting up the engine read the safety messages contained in the operator's manual carefully. Read all safety stickers on the machine. Have people move back from the machine. Learn how to use the controls before starting up the machine. It is your responsibility to follow the manufacturer's instructions on how to operate and maintain the machine. It is your responsibility to follow applicable rules and regulations. Service and Operator's Manuals are available from your J.I. Case Dealer.



WARNING: If you wear loose clothing or if you omit to use safety equipment for your work, you risk injury. Always wear clothes that do not risk getting caught in the machine. Other safety equipment may be necessary, in particular : helmets, safety shoes, ear plugs, safety glasses, protection mask, thick gloves and reflecting clothes.



WARNING: When working close to the fan with the engine running, avoid wearing loose clothing and operate with extreme caution.



WARNING: When checking the hydraulic circuits, follow procedures to the letter. **DO NOT CHANGE** procedures.



WARNING: Prior to operating the hydraulic cylinders of this machine for setting or to bleed the circuit, have all people standing around the machine move away.



WARNING: Wear gloves or insulated mittens when working on hot parts.



WARNING: Lower all attachments to the ground or rest them on stands before carrying out maintenance jobs.



WARNING: Fine sprays of hydraulic oil under pressure can penetrate the skin and cause serious infection. If hydraulic oil under pressure penetrates the skin, see a doctor immediately. Maintain all hoses and pipes in good condition. Make sure that all connections are properly tightened. Change all hoses or pipes that have been damaged or that are suspect. **DO NOT CHECK** for leaks with bare hands. Use a piece of cardboard or wood.



WARNING: To remove a hardened pin such as a pivot pin, or a hardened shaft, use a soft head hammer (brass or bronze) or a brass or bronze strip and a steel head hammer.



WARNING: When using a hammer to remove or reassemble pivot pins, or when using compressed air, or when using a grinder make sure to wear safety glasses that protect the eyes from all sides.



WARNING: Use proper lifting/hoisting equipment to lift wheels or tracks and always work on safe ground. Prevent the machine from moving using correct safety chocks.



WARNING: When performing maintenance or repair operations on the machine, make sure that the work shop floor, the cab and the steps of the excavator are free from oil, water, grease, tools etc. Use oil absorbing material or rags as necessary. Always think safety.



WARNING: Certain components of this machine are very heavy. Use hoisting tools or additional assistance as recommended in this manual.



WARNING: Exhaust fumes can cause death. If it is necessary to start up the engine in a closed building, evacuate exhaust fumes using an exhaust pipe extension. Open the doors and let fresh air into the building.



WARNING: When battery liquid is frozen, the battery can explode if : (1) you try to charge the battery or (2) you try to start the engine by connecting an auxiliary power source. To prevent battery electrolyte from freezing keep the battery fully charged. If you do not follow these instructions, you or others nearby may be injured.



WARNING: Batteries contain acid and explosive gases. A spark, a flame or an improper cable connection may cause an explosion. For proper connection of cables to the battery of this machine see the Operator's Manual. If you do not follow these instructions, you risk severe injury.

TWIN WHEELS

Safety rules



WARNING: *In all cases, before removing twin wheels, always deflate both tyres completely.*



WARNING: *If a tyre bursts it can cause serious injury. Check tyres regularly to see that they are in good condition and always be sure to inflate them to the correct pressure.*



WARNING: *Never face a tyre when checking pressure or adding air. Always stand in front of the tread. Use an inflation cage if the wheel has been removed from the machine. Make sure all people standing in the area move well away.*



WARNING: *Never weld near a tyre. If this can not be avoided, it is mandatory to remove the tyre before performing any welding operations.*



WARNING: *Make sure that all decals on the machine are perfectly legible, clean them regularly and replace any decals which are damaged, missing or painted over, with new ones.*

Safety instructions

- Use appropriate, good quality tools to disassemble the various wheel components. Never use a hammer. Use a rubber, plastic or copper-faced mallet.

IMPORTANT: *Never remove the inner tyre valve extension, as this will be necessary afterwards for inflating and deflating the tyre.*

IMPORTANT: *If the valve or the valve extension are no longer accessible, take the necessary precautions and then, imperatively, puncture the tyre.*

- Use suitable grease to facilitate the installation and removal of the tyre.
- Never re-inflate a tyre on the machine which has been used at a pressure lower than 5.6 bar.
- Check the various components: tyre, rim, shoulder, retaining ring and replace any defective items.
- Never reuse a retaining ring which is distorted or rusty.

GENERAL INFORMATION

CLEANING

Clean all metal parts except bearings with white spirit or steam. Do not use caustic soda when steam cleaning. After cleaning, dry and lubricate all parts. Clean hydraulic lines with compressed air. Clean bearings with kerosene, then dry them and lubricate them.

INSPECTION

Check all parts when disassembled. Change all parts showing wear or damage. Scratches that are not too deep can be removed by honing or with a rag dipped into buffing compound. A full visual inspection to detect wear and pitting and subsequent changing of parts will prevent premature failure.

BEARINGS

Check that bearings rotate freely. If their adjustment is too loose or if they do not run regularly, change them. Wash bearings with a good solvent or kerosene and let them dry. **DO NOT DRY BEARINGS WITH COMPRESSED AIR.**

NEEDLE BEARINGS

Before inserting needle bearings into a bore, remove all metal particles from the edge of the bore. Prior to mounting bearings with a press, coat the inside and the outside of the bearing with vaseline.

GEARS

Check all the gears for wear or damage. Change worn or damaged gears.

SEAL RINGS, O-RINGS, GASKETS

Always use new seal rings. O-rings and gaskets. Coat sealing rings and O-rings with vaseline.

SHAFTS

Check all shafts showing signs of wear or damage. Check that the surface of a shaft running in a bearing is not damaged.

SPARE PARTS

Always use original CASE spare parts. To order spare parts, see the Spare Parts Catalogue to indicate the proper reference of original CASE spare parts. Failures caused by the use of parts that are not original CASE spare parts are not covered by the warranty.

LUBRICATION

Use only oils and lubricants specified in the Operator's and Service Manuals. Failures due to the use of oils and lubricants not specified are not covered by the warranty.

Section 2002

2002

ENGINE REMOVAL AND INSTALLATION 588 Excavators

Before performing any service work on a machine, the following steps must be carried out in the order shown :

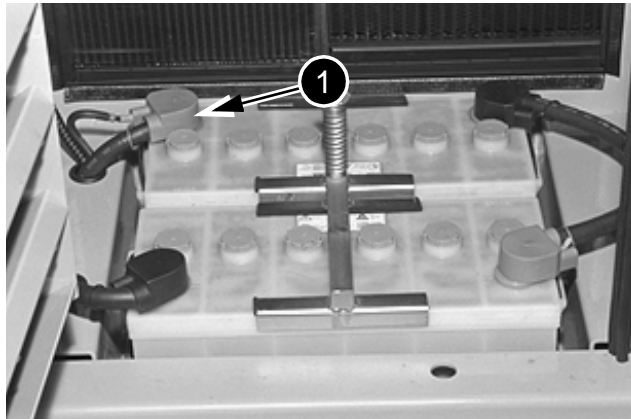
- Park the machine on hard, flat ground.
- Lower the attachment to the ground.
- Stop the engine and let it cool down.
- Turn the battery master switch to the "OFF" position and remove the key.



ATTENTION : When the machine is operating, the components of the engine and the hydraulic pump attain a high temperature. To avoid being burnt by hot metal or scalded by high temperature water or oil, let the machine cool down before beginning any service operation.

Removal and Installation

STEP 1



PG02234

Disconnect the negative cable (1) first and then the other cables.

STEP 2

Remove the access panels located under the engine.

STEP 3

Remove the exhaust silencer outlet tube.

NOTE : When installing, make sure that the exhaust outlet is pointing towards the rear.

STEP 4

Remove the upper hood using a suitable lifting device.

STEP 5

Remove the side panel on the walkway side.

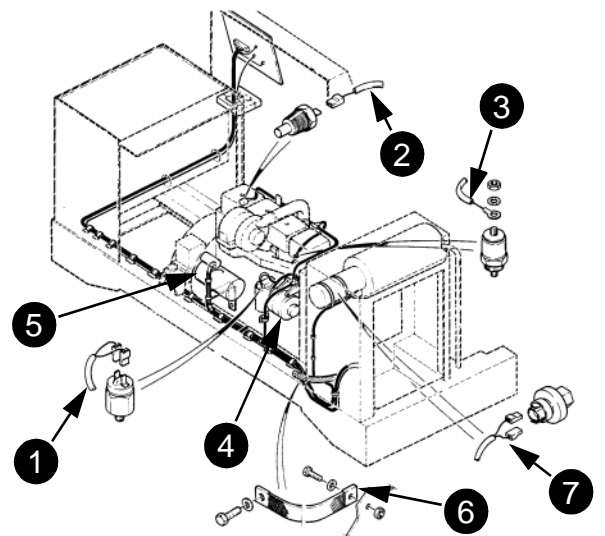
STEP 6

Remove the exhaust silencer and its bracket.

STEP 7

Remove the hose connecting the turbocharger to the air filter.

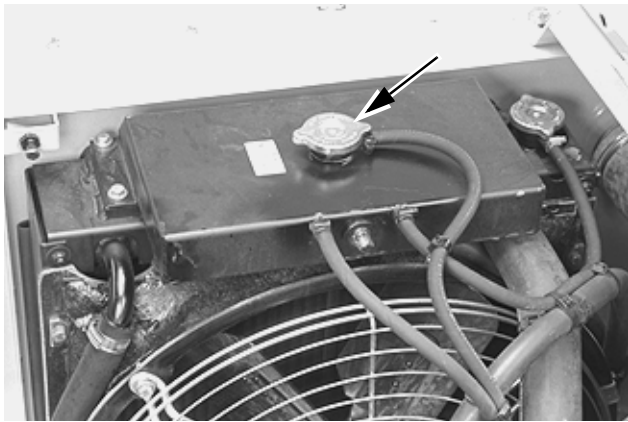
STEP 8



PDG0416

- 1 ENGINE OIL PRESSURE PRESSOSTAT.
- 2 ENGINE COOLANT SOLUTION TEMPERATURE SENDER.
- 3 ENGINE SHUT-DOWN SOLENOID VALVE
- 4 ALTERNATOR (SEE SECTION 4003) FOR WIRING IDENTIFICATION.
- 5 STARTER MOTOR (SEE SECTION 4004) FOR WIRING IDENTIFICATION.
- 6 EARTHING STRAP.
- 7 AIR FILTER RESTRICTION PRESSURE SWITCH.

STEP 9

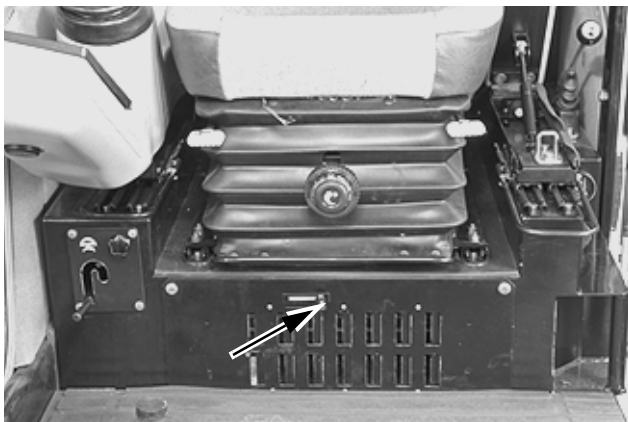


PG02824A

Remove the expansion reservoir cap.

NOTE : Do not remove the cap when the engine is hot. The system is still under pressure and you risk being scalded.

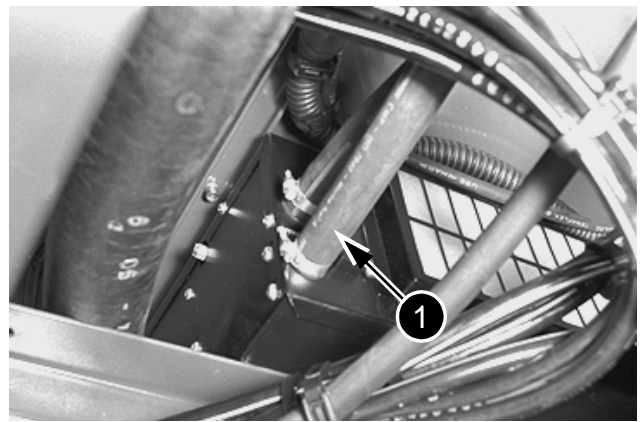
STEP 10



PG01706

Move the heating lever to the left.

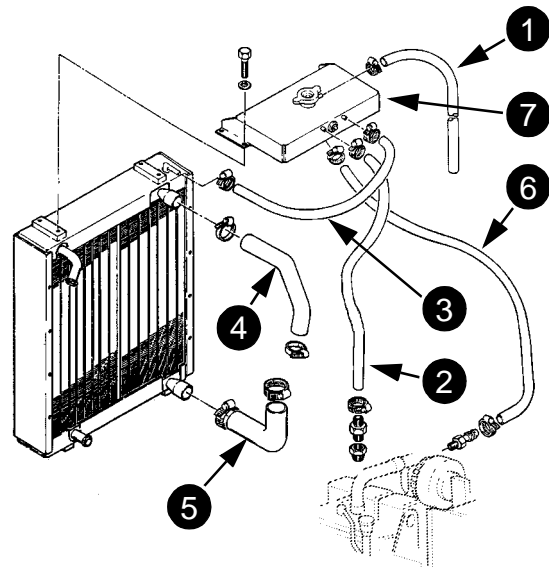
STEP 11



PE07509

Remove the lower tray under the operator's compartment. Place a receptacle of about 30 litres underneath and then disconnect the hose (1) from the heating system and allow the coolant solution to flow out.

STEP 12

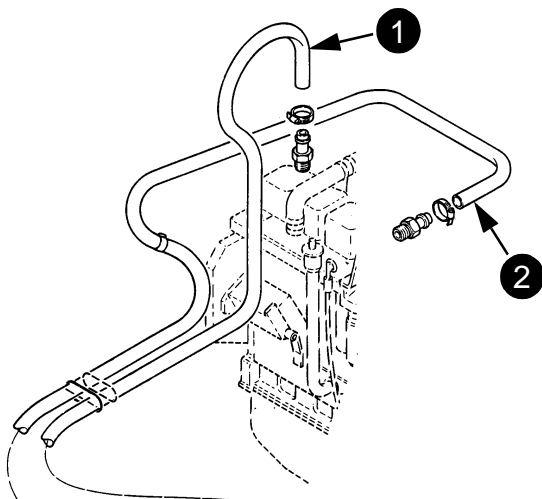


PDG0410

Disconnect, label and remove the cooling system hoses from the engine in numerical order.

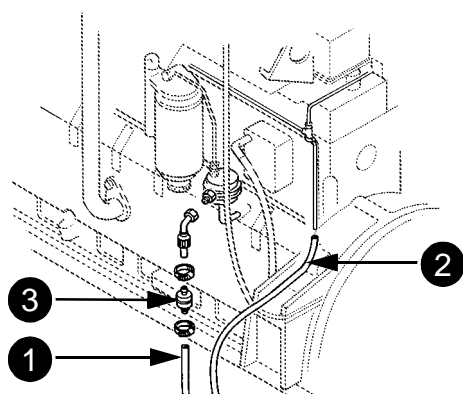
NOTE : When installing, make sure that the system hoses are clean.

- 1 OVERFLOW HOSE
- 2 ENGINE DEGASSING HOSE
- 3 RADIATOR DEGASSING HOSE
- 4 ENGINE/RADIATOR RETURN HOSE
- 5 PUMP/RADIATOR INLET HOSE
- 6 COOLANT SOLUTION SUPPLY HOSE
- 7 EXPANSION RESERVOIR

STEP 13

PDG0412

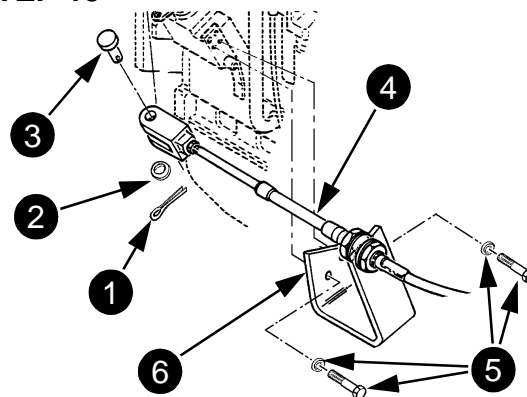
Disconnect heating system hoses (1) and (2) from the engine.

STEP 14

PDG0409

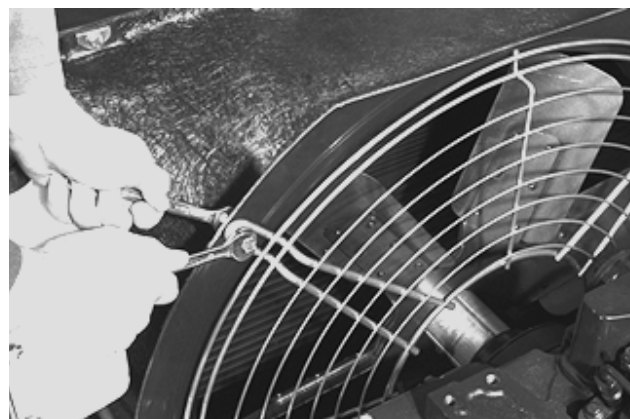
Disconnect the fuel supply pipe (1) and plug it. Disconnect the fuel return pipe (2) and plug it.

NOTE : When installing, change the filter (3).

STEP 15

PDG0408

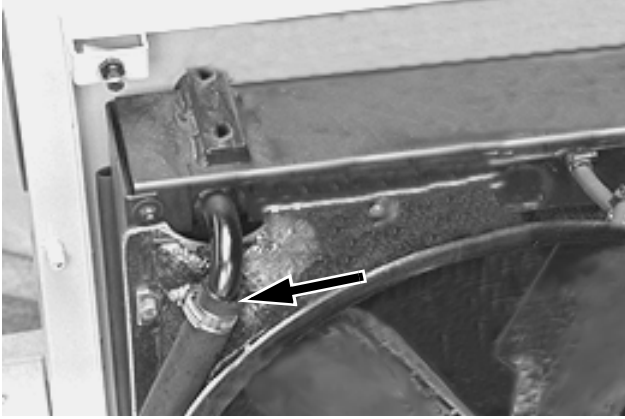
Remove the split pin (1), the washer (2) and the yoke pin (3) from the accelerator cable (4). Remove the accelerator cable (6) bracket retaining hardware (5).

STEP 16

PE06825

Remove the fan guard fastening hardware and remove the guard.

STEP 17



PG02824B

Remove and plug the hydraulic fluid return hose to gain access to the shroud retainers.

NOTE : Refer to "Tools required" on page 2 for plugging the hydraulic fluid return hose.

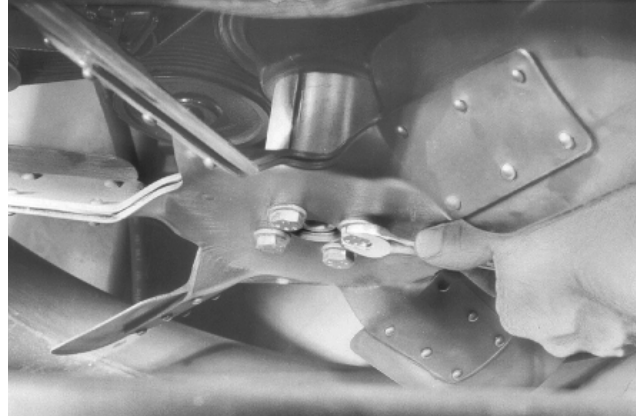
STEP 18



PE10104

Remove the shroud fastening hardware and move the shroud towards the engine to gain access to the fan retaining screws.

STEP 19

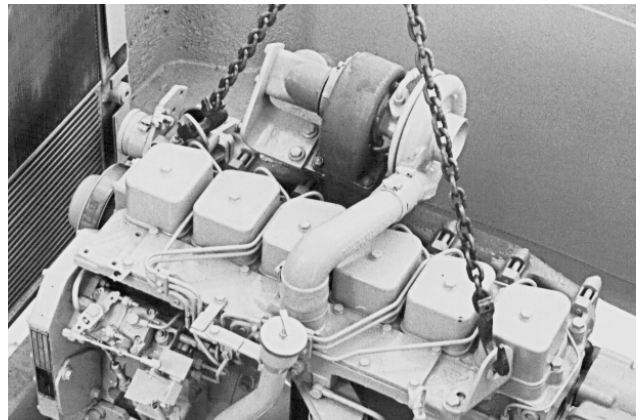


PE10105

Remove the four fan retaining screws and remove the fan and spacer. Remove the fan shroud.

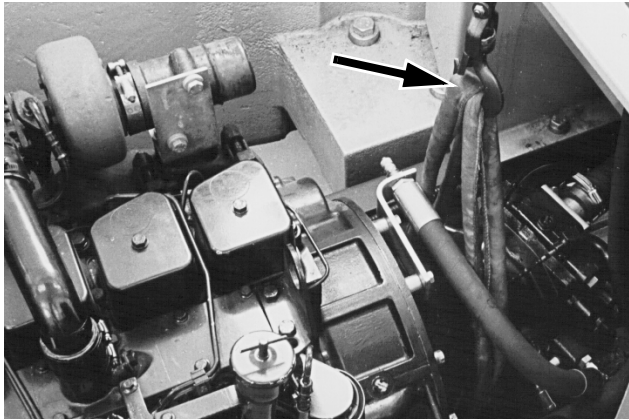
NOTE : When installing, the fan shroud should be installed resting on the engine. Install the spacer and the fan and then tighten the screws to a torque of 44 Nm.

STEP 20



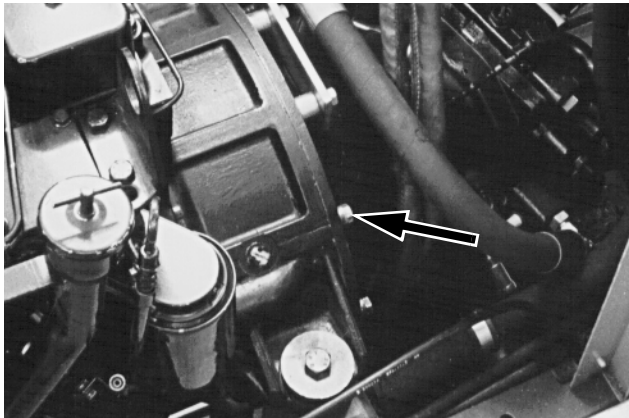
B20308

Attach a suitable lifting device to the engine lifting eyes. Weight of engine : 350 kg

STEP 21

C24000

Using a suitable sling, support the hydraulic pump so as to prevent it dropping during removal of the engine.

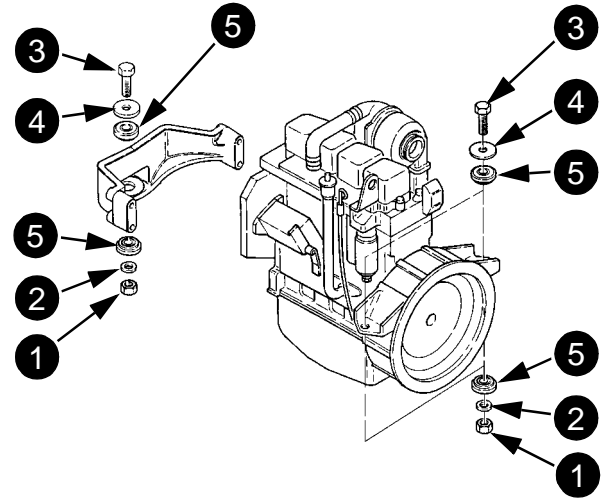
STEP 22

C24000A

Remove the hydraulic pump fastening hardware.

NOTE : When installing, tighten the hydraulic pump retaining screws to a torque of 44 Nm.

NOTE : When installing, the pressure control hose and its bracket must be installed.

STEP 23

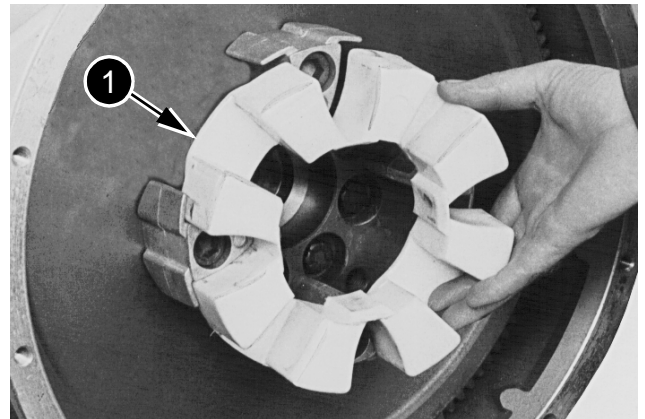
PDG0413

Remove the nuts (1), the washers (2) and remove the screws (3) and the thrust washers (4).

NOTE : When installing, make a visual check of the condition of the rubber spacers (5). Replace them with new spacers if necessary. Tighten the engine support retaining screws to a torque of 217 to 271 Nm.

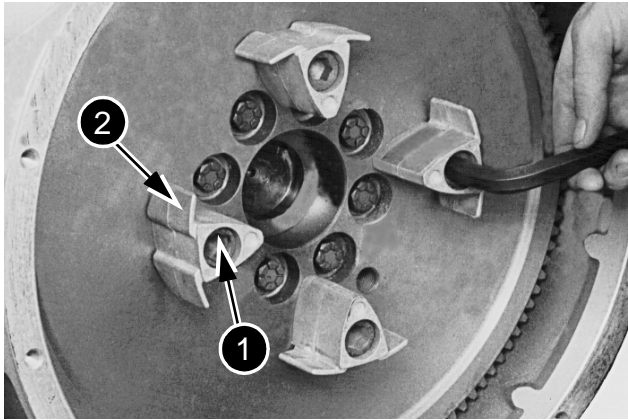
STEP 24

Carefully lift the engine. Move it towards the radiator until it is disengaged from the pump coupling. When there is nothing to prevent the removal of the engine, install it on a suitable repair bench.

STEP 25

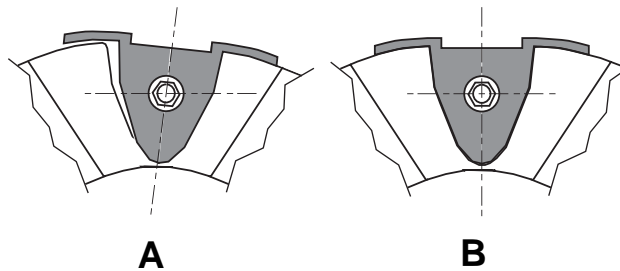
B20402

Remove the flexible coupling (1), check wear and condition of the coupling visually and replace it by a new one if necessary.

STEP 26

B20404

Remove the screws (1) and remove the centering lugs (2). Make a visual check of the wear and general condition of the centering lugs and replace them if necessary.

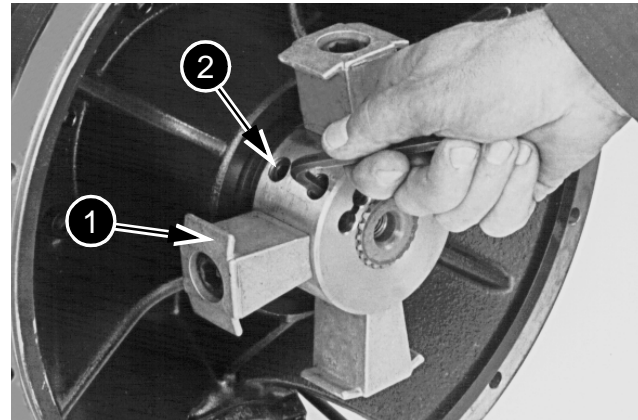
NOTE :

PDG0419

(A) INCORRECT
(B) CORRECT

When installing, apply Loctite 638 on the screws, position the centering lugs correctly, and tighten the screws to a torque of 220 Nm.

NOTE : If it is necessary due to wear to replace the flexible coupling and the centering lugs, the splined sleeve should also be replaced.



C18226

Remove the splined sleeve (1) from the hydraulic pump. Replace it if necessary.

NOTE : When installing the splined sleeve (1), install the splined sleeve on the pump shaft. The splined sleeve should be pushed fully home against the pump shaft shoulder. Tighten the retaining screws (2) to a torque of 100 Nm.

NOTE : When installing the engine, proceed in the reverse order to that used for the removal.

Before using the machine, perform all the following operations :

- Fill the cooling system (see Operator's Manual).
- Turn the battery master switch to the "ON" position.
- Bleed and prime the fuel circuit (see Operator's Manual).
- Check that the engine oil pressure warning lamp goes out when the engine is running.
- Bleed the cooling system (see Operator's Manual).
- Check the hydraulic system, fuel system and cooling system for leaks.
- Stop the engine and check all levels. Top up if necessary.

RADIATOR AND OIL COOLER

Before performing any service work on the machine, the following steps must be carried out in the order shown:

- Park the machine on hard, flat ground.
- Lower the attachment to the ground.
- Stop the engine.
- Turn the battery master switch to the "OFF" position and remove the key.
- Simultaneously operate the emergency foot pump and the control lever so as to release the pressure in the hydraulic system.
- Unscrew the hydraulic reservoir pressure release cap two turns. Retighten the cap.



WARNING: When the machine is operating, the components of the engine and the hydraulic pump attain a high temperature. To avoid being burnt by hot metal or scalded by high temperature water or oil, let the machine cool down before beginning any service operation.

Removal and Installation

STEP 1

Remove the lower tray from under the operator's compartment and the access panels from under the upperstructure. Remove the engine side hood.

STEP 2

Remove the expansion reservoir cap.

IMPORTANT: Do not remove the cap when the engine is hot. The system is still under pressure and you risk being scalded.

STEP 3



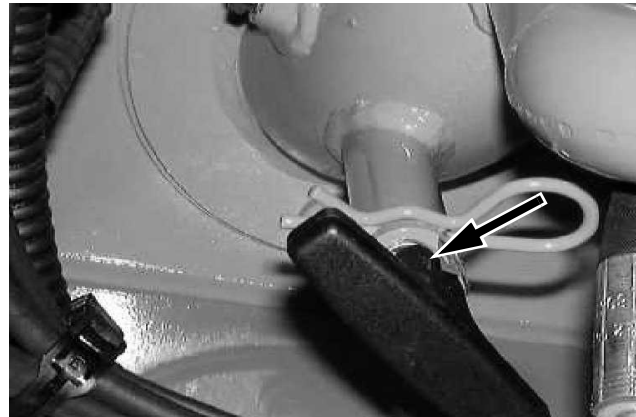
CD99H004

Place the heating control lever in open position.

STEP 4

Disconnect the return hose from the heater unit and allow the coolant solution to flow into a suitable receptacle. Reconnect the hose once the circuit has been completely drained.

STEP 5



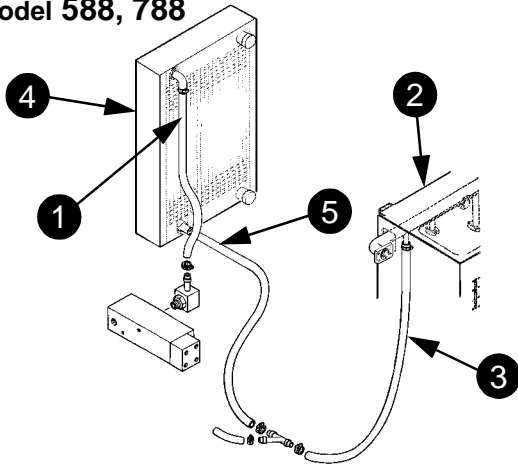
CD99H009

Close the shut-off valve under the hydraulic reservoir.

IMPORTANT: After an operation which has required the shut-off valve to be closed, never start the engine before making sure that the shut-off valve has been reopened.

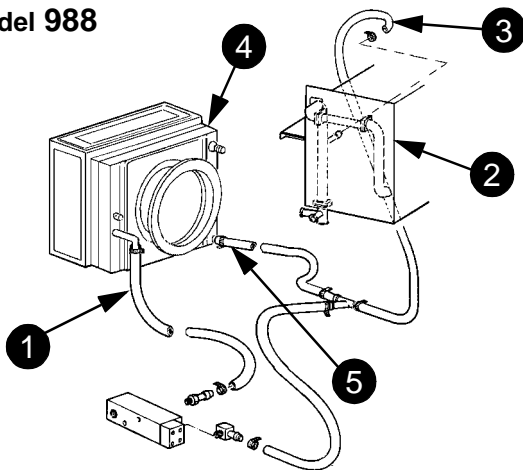
STEP 6

Model 588, 788



PDG0420

Model 988

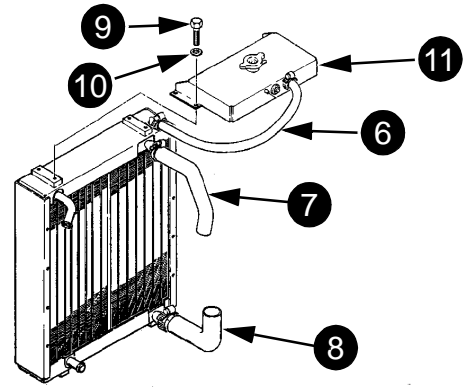


PDG0421

Remove and plug the upper hydraulic fluid hose (1). To avoid losing fluid, disconnect the oil cooler (4) return hose (3) from the hydraulic reservoir (2) and drain the oil into a clean receptacle. Reconnect the return hose (3) to the reservoir (2) then remove and plug the oil cooler (4) hose (5).

NOTE: Refer to "Tools required" on page 3 for plugging the hoses (1) and (5).

STEP 7



C199H504

Remove the degassing hose (6) from the radiator and plug it.

Remove and plug the water pump/radiator return hose (7).

Remove and plug the water pump/radiator feed hose (8).

Remove the mounting screws (9) and washers (10) from the coolant reservoir (11).

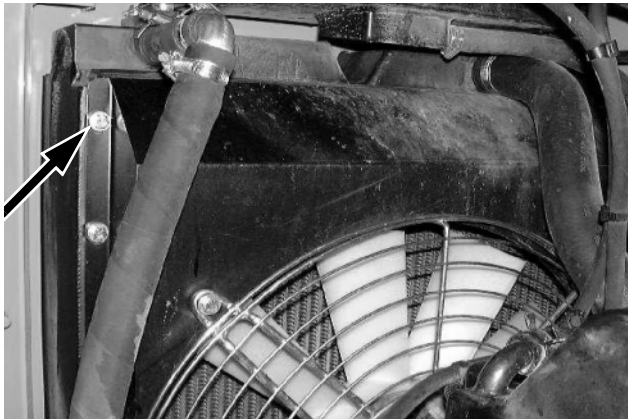
STEP 8



CD99H006

Remove the fan guard fastening hardware and remove the guard.

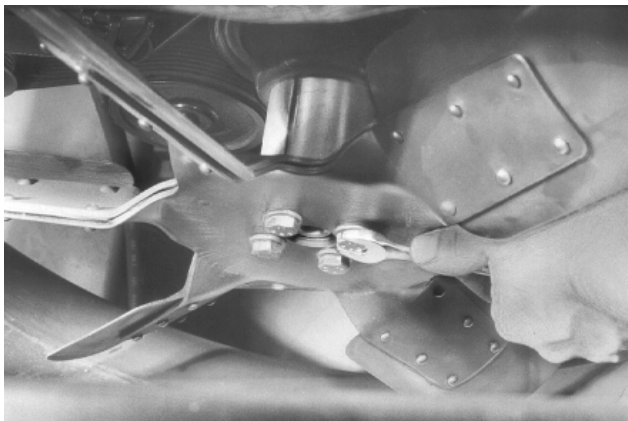
STEP 9



CD99H007

Remove the shroud fastening hardware and move the shroud towards the engine to gain access to the fan retaining screws.

STEP 10



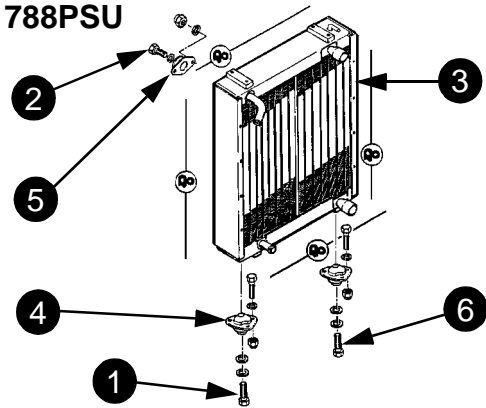
PE10105

Remove the four fan retaining screws and remove the fan and spacer. Remove the fan shroud.

NOTE: When installing, the fan shroud should be installed resting on the engine. Install the spacer and the fan and then tighten the screws to a torque of 44 Nm.

STEP 11

Model 788PSU

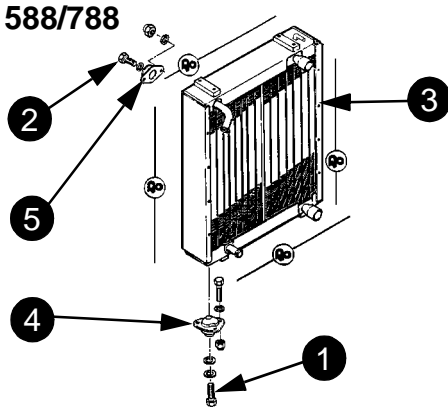


PDG0422BIS

Remove the lower retainers (1) and (6) and the upper retainers (5) from the radiator (3). Remove the lower (4) and upper (5) flexible mountings.

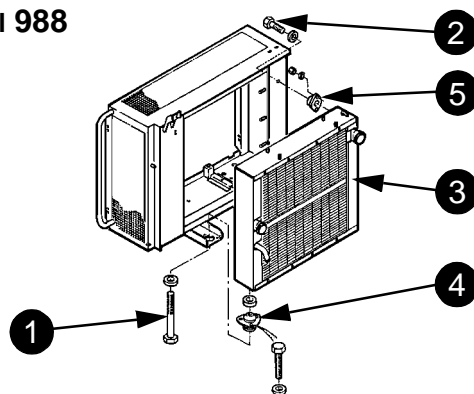
NOTE: It is not possible to remove the lower retainers (6) unless the counterweight has already been removed.

Model 588/788



PDG0422

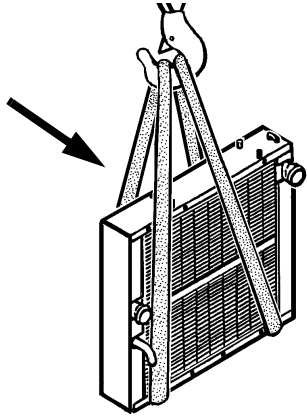
Model 988



PDG0423

Remove the lower fastening hardware (1) and the upper fastening hardware (2) from the radiator (3). Remove the lower (4) and upper (5) flexible mountings.

NOTE: When installing, visually check the wear and general condition of the rubber mountings (4) and (5). Replace them if necessary.

STEP 12

NOTE: *Installation is carried out in the reverse order from that of removal.*

PDG0431

Install a suitable sling around the radiator and remove the radiator.

Before using the machine, all the following operations must be performed:

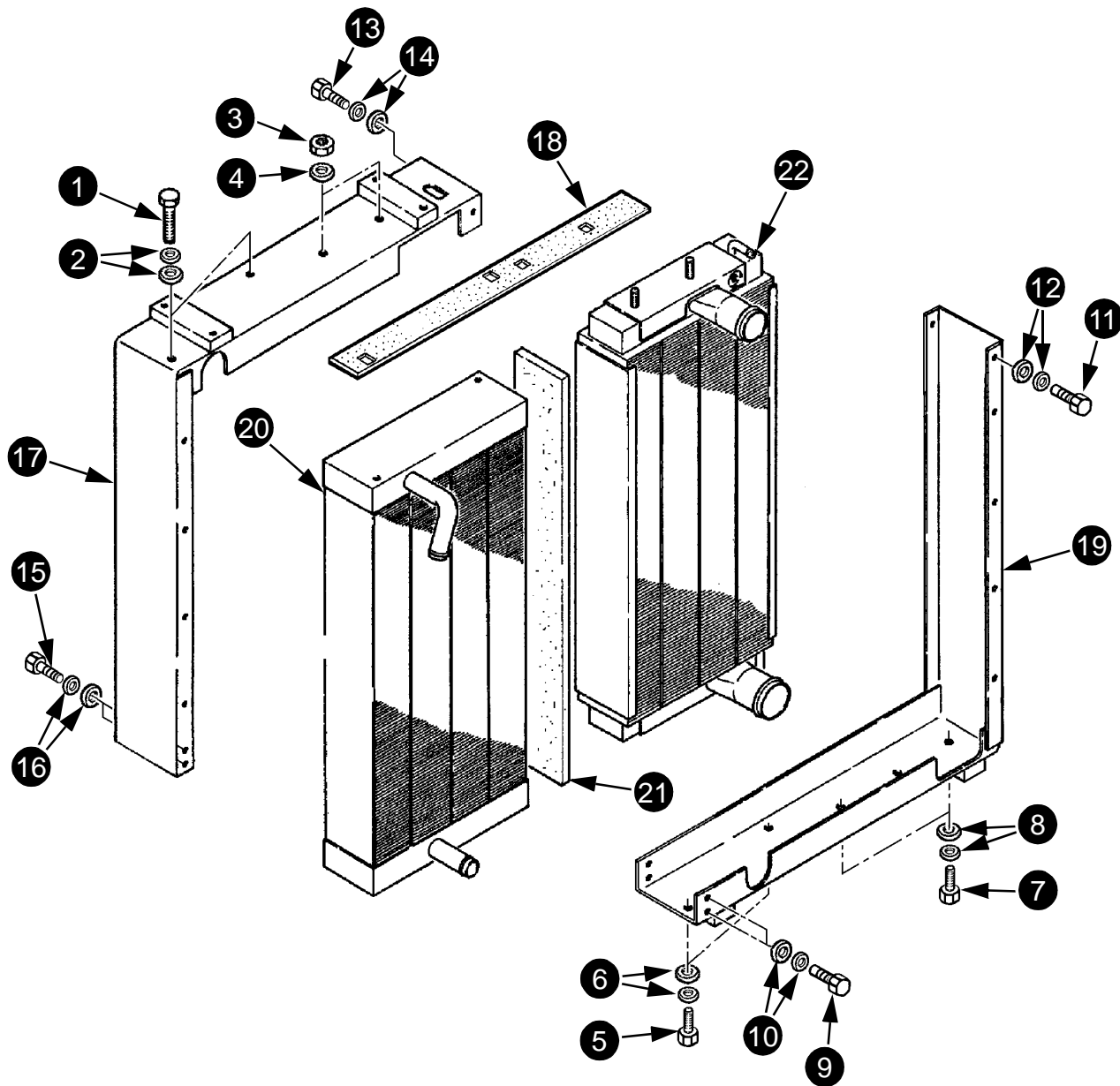
- Check the oil level in the hydraulic reservoir. Top up if necessary.
- Turn the battery master switch key to the "ON" position.
- Fill the cooling system (see procedure on page 10).
- Bleed the cooling system (see procedure on page 10).
- Check the hydraulic cooling system for leaks.

REPLACING THE RADIATOR OR THE OIL COOLER

Model 588, 788 (bolted radiator and oil cooler frame)

Disassembly and assembly

NOTE: The parts are numbered in order of disassembly. Assembly is carried out in the reverse order from that of disassembly.

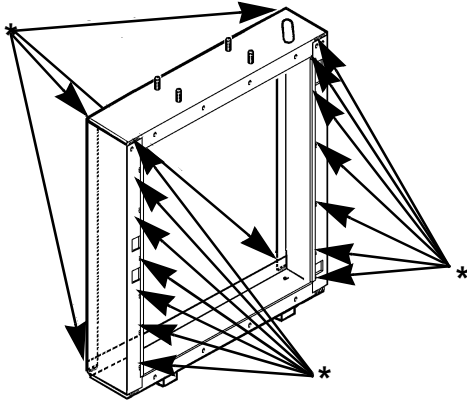


- 1 SCREW
- 2 WASHERS
- 3 NUT
- 4 WASHERS
- 5 SCREW
- 6 WASHERS
- 7 SCREW
- 8 WASHERS
- 9 SCREW
- 10 WASHERS
- 11 SCREW

- 12 WASHERS
- 13 SCREW
- 14 WASHERS
- 15 SCREW
- 16 WASHERS
- 17 UPPER AND LEFT-HAND SIDE BRACKET
- 18 FOAM SEAL
- 19 LOWER AND RIGHT-HAND SIDE BRACKET
- 20 HYDRAULIC FLUID COOLER
- 21 FOAM SEAL
- 22 COOLANT SOLUTION RADIATOR

CS96C045

Model 988 (welded and bolted radiator and oil cooler frame)



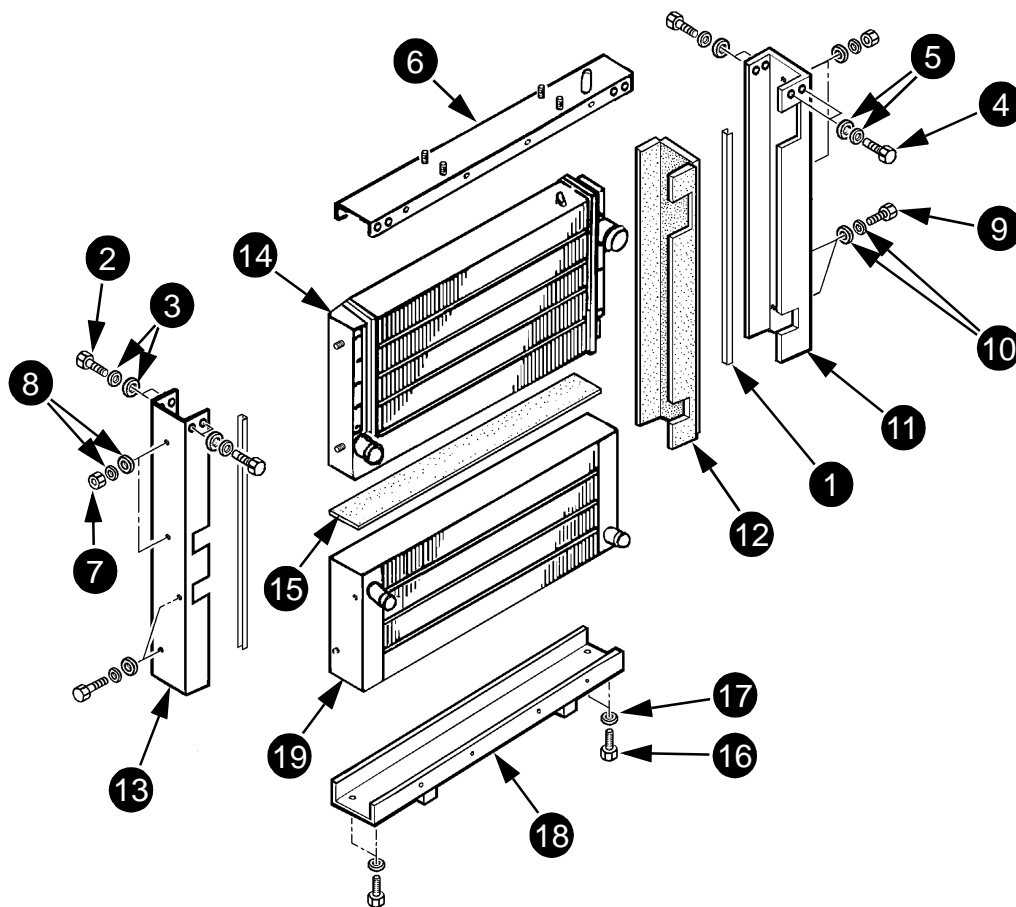
NOTE: *Grind the welds shown by an asterisk.*

NOTE: *When reassembling, flatten off the welds and scratch off the paint at the weld locations.*

PDG0427

Disassembly and assembly

NOTE: The parts are numbered in order of disassembly. Assembly is carried out in the reverse order from that of disassembly.



- 1 BRACKET
- 2 SCREW
- 3 WASHERS
- 4 SCREW
- 5 WASHERS
- 6 UPPER BRACKET
- 7 NUT
- 8 WASHER
- 9 SCREW
- 10 WASHER
- 11 RIGHT-HAND SIDE BRACKET
- 12 FOAM SEAL
- 13 LEFT-HAND SIDE BRACKET
- 14 COOLANT SOLUTION RADIATOR
- 15 FOAM SEAL
- 16 SCREW
- 17 WASHER
- 18 LOWER SUPPORT
- 19 HYDRAULIC FLUID COOLER

CS95G05



Suggest:

If the above button click is invalid.

Please download this document

first, and then click the above link

to download the complete manual.

Thank you so much for reading

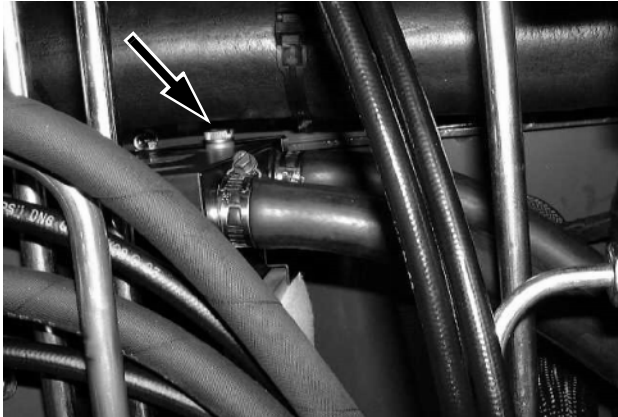
Filling the cooling system

STEP 1

Fill with coolant solution via the expansion reservoir until it overflows.

IMPORTANT: Use suitable coolant solution (see "Specifications", page 3).

STEP 2



CD99H005

Unscrew the heating unit bleed screw, let the air escape until coolant solution flows out then retighten the screw.

STEP 3

Run the engine for a few minutes then check the level in the expansion reservoir again and top up if necessary.

STEP 4

Install the expansion reservoir cap.



WARNING: Do not run the engine in an enclosed space. If necessary, make sure there is good ventilation under all circumstances.

<https://www.ebooklibonline.com>

Hello dear friend!

Thank you very much for reading.

Enter the link into your browser.

The full manual is available for immediate download.

<https://www.ebooklibonline.com>