



PARTS CATALOG

LOADER BACKHOE

580M SERIES 3



BD08B046

TABLE OF CONTENTS

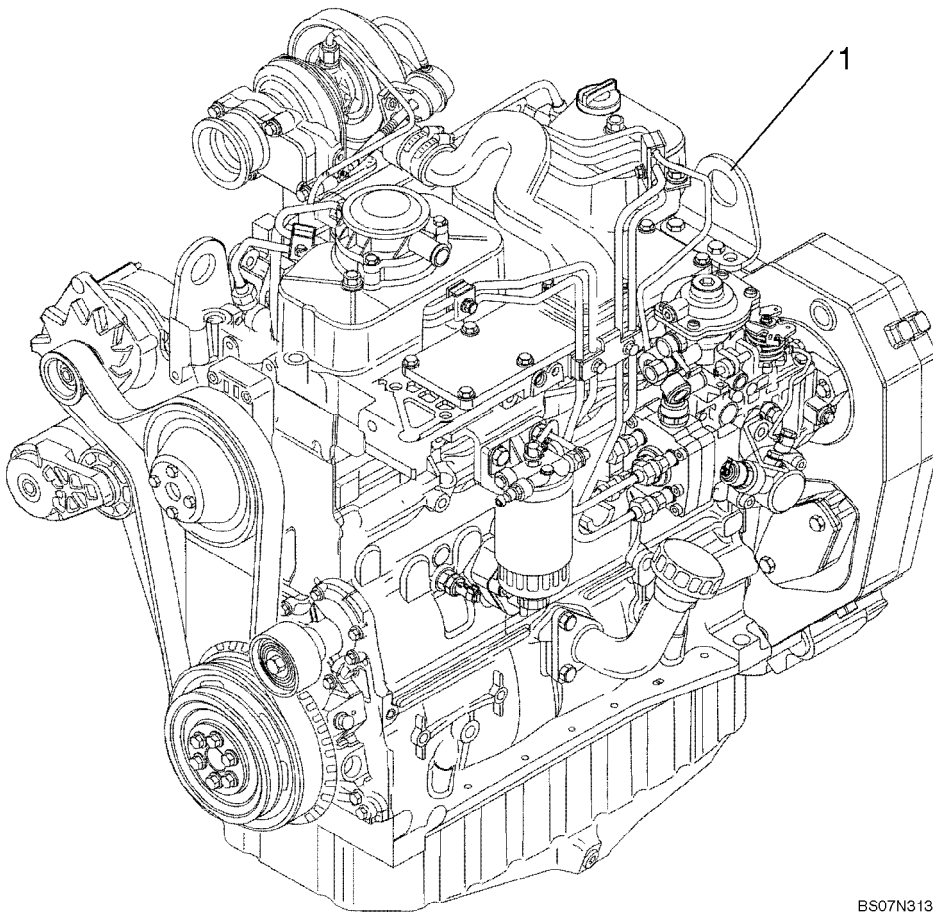
- General Information
- Section 2 – Engine
- Section 3 – Fuel System
- Section 4 – Electrical System
- Section 5 – Tracks / Steering
- Section 6 – Power train
- Section 7 – Brakes
- Section 8 – Hydraulics
- Section 9 – Chassis/Attachments
- Index

02-08

p1

02/08

ENGINE



BS07N313

ENGINE

REF	FN	PART NUMBER	YR/SN	QTY	DESCRIPTION
1		87603948		1	ENGINE, 85 hp, Internal Intake EGR; Bosch Injection Pump; Turbocharged Engine; Includes Parts On Figures 02-08 - 02-42, 03-04 - 03-11

	580M
--	-------------

<https://www.ebooklibonline.com>

Hello dear friend!

Thank you very much for reading.

Enter the link into your browser.

The full manual is available for immediate download.

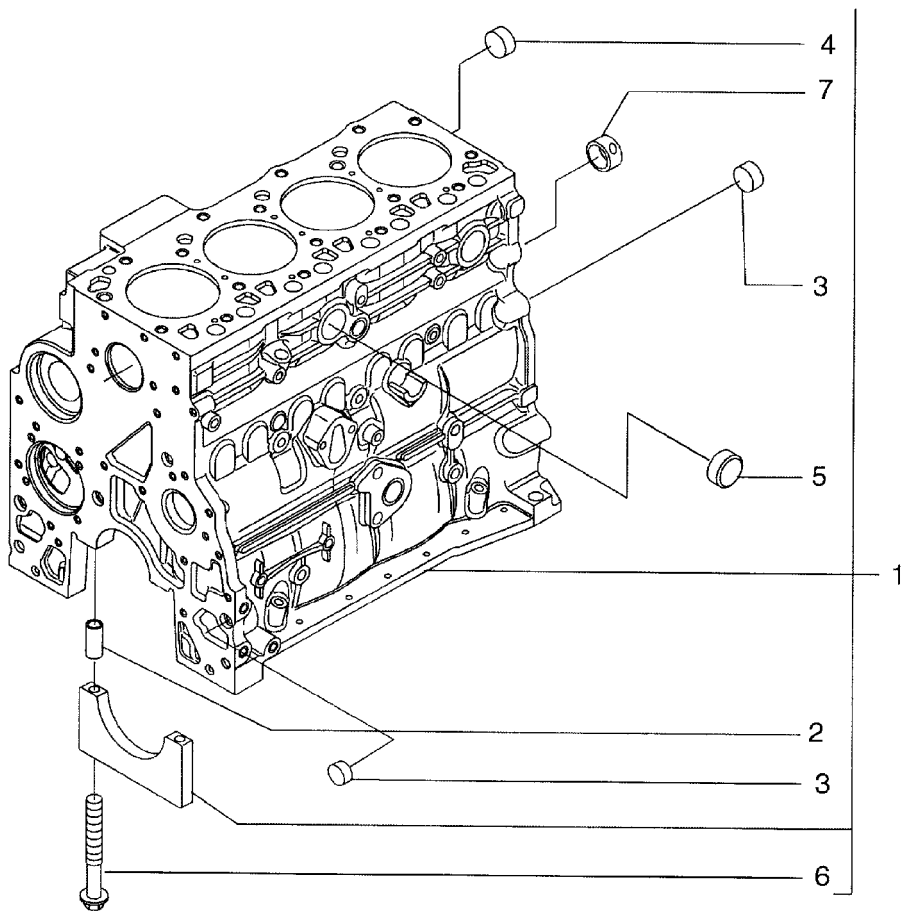
<https://www.ebooklibonline.com>

02-09

p1

11/07

CYLINDER BLOCK



02-09

p1

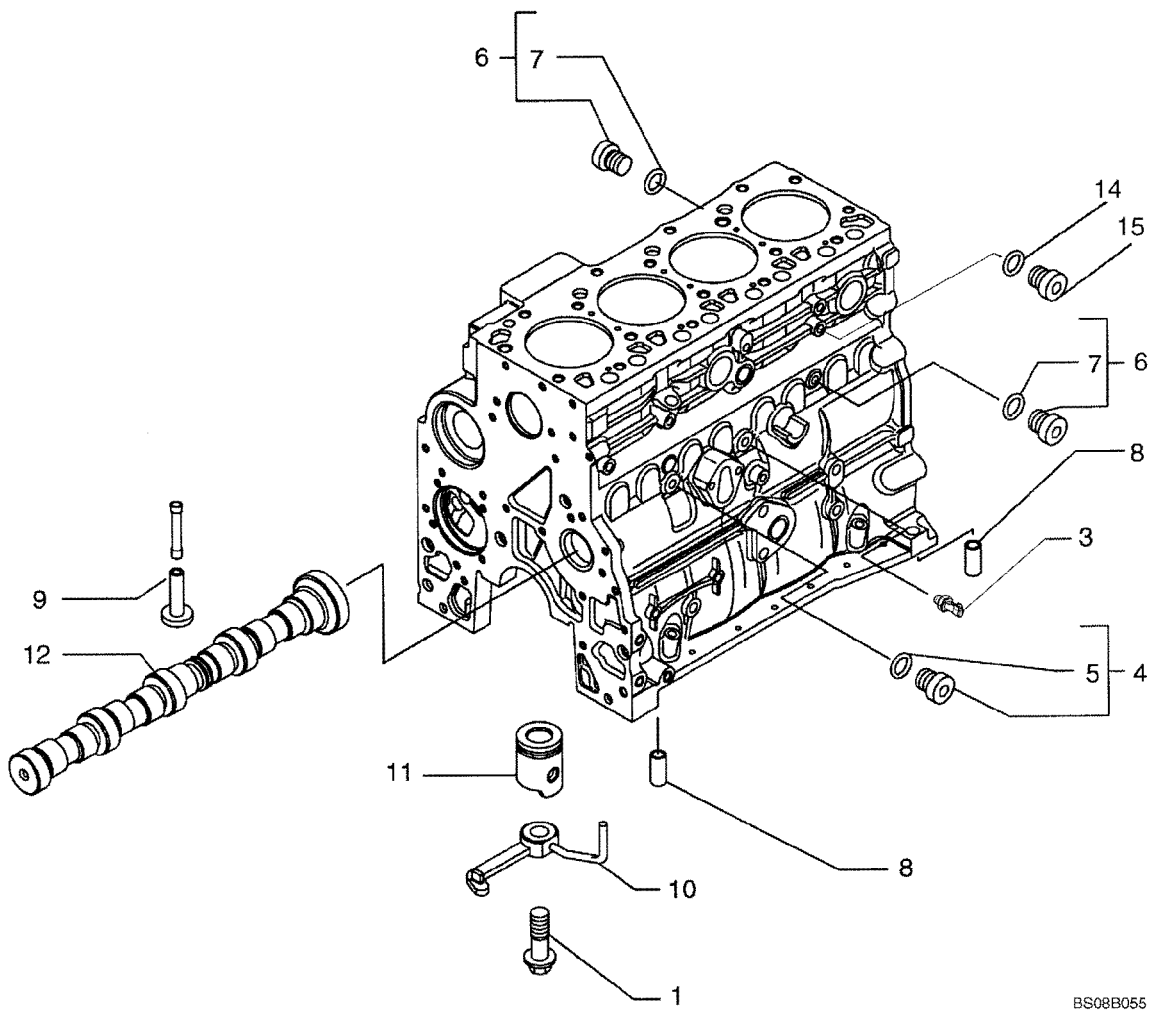
11/07

CYLINDER BLOCK

REF	FN	PART NUMBER	YR/SN	QTY	DESCRIPTION
1		2830082		1	CYLINDER BLOCK, - ASSY; Incl. Ref 2 - 7, Plus Main Bearing Caps
		4895919		4	BEARING, CRANKSHAFT, Main Bearing Cap; Not Serviced Separately
		4895921		1	BEARING, CRANKSHAFT, Main Bearing Cap; Not Serviced Separately
2		4899026		10	DOWEL
3		4895039		3	PLUG
4		4895038		4	PLUG
5		4895228		2	PLUG
6		4891353		10	SCREW, Flg Hd, M12 x 1.5 x 120
7		4895040		1	BUSHING

580M

CYLINDER BLOCK



02-10

p1

12/07

CYLINDER BLOCK

REF	FN	PART NUMBER	YR/SN	QTY	DESCRIPTION
1		4894218		4	SCREW
3		2852889		1	SWITCH, PRESSURE
4		4899009		1	PLUG, M10 x 1; Incl. Ref 5
5		4899072		1	O-RING
6		4895392		2	PLUG, 18 x 1.5; Incl. Ref 7
7		4895393		1	O-RING
8		4895049		2	DOWEL
9		4895180		8	TAPPET
10		2852202		4	NOZZLE, LUB. OIL JET, Incl. Ref 1
11		REF		1	INSTRUCTION, PISTON; See Figure 02-23
12		REF		1	INSTRUCTION, CAMSHAFT; See Figure 02-28
13		4896153		1	PLUG, Piston Cooling, M6.08 OD x 30 lg; If Used
14		4895623		1	PLUG
15		4895625		1	O-RING

580M

02-11

p1

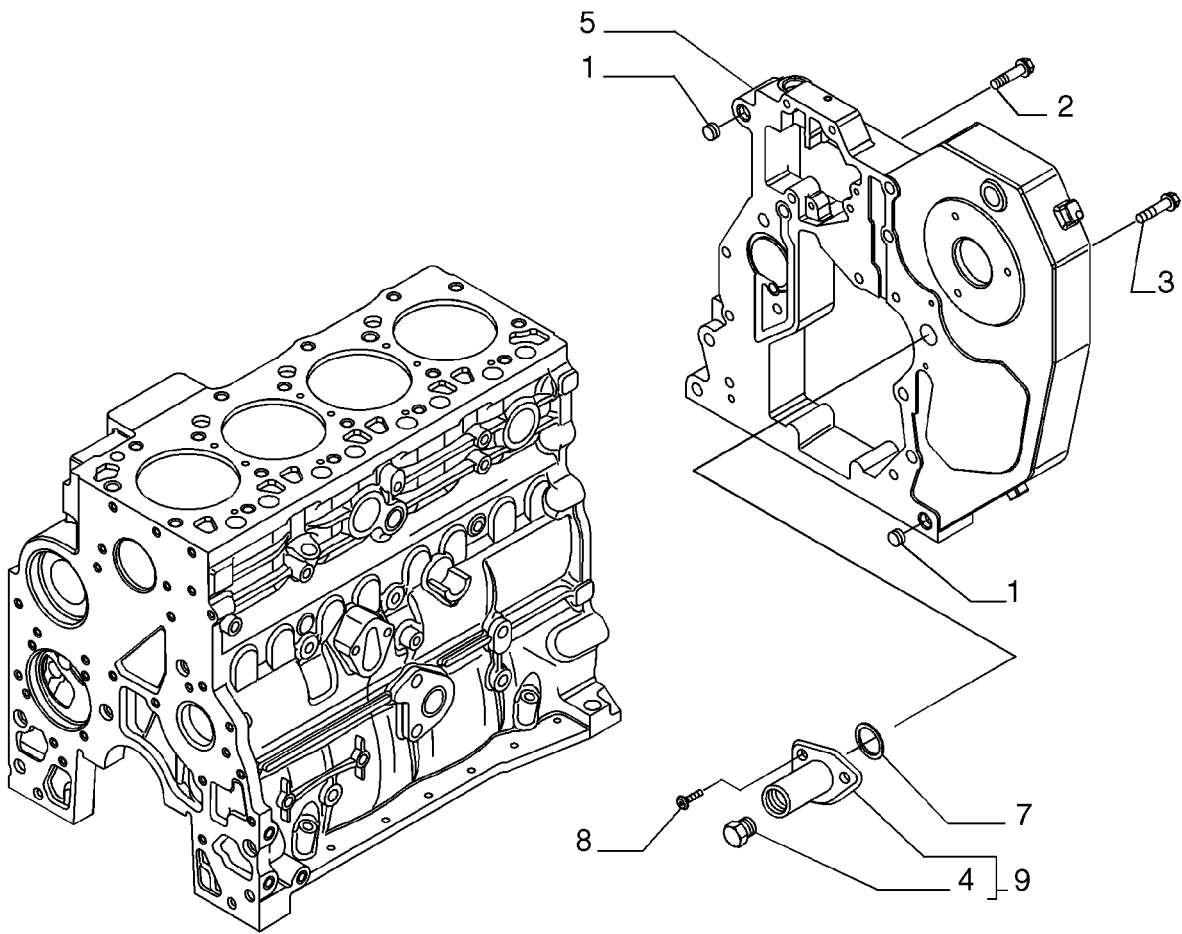
02/08

OIL PUMP, PAN

REF	FN	PART NUMBER	YR/SN	QTY	DESCRIPTION
1		16673635		2	SCREW, M8 x 20mm
2		4899091		22	SCREW, Hex Flg, M8 x 1.25 x 40
2		4895489		2	SCREW, Flange, M8 x 110
3		4898301		1	GASKET
4		2852011		1	PAN, ENGINE OIL
5		2852978		1	O-RING, Seal
6		2856086		1	PLUG, 22 x 1.5; Does Not Include Seal, Purchase Seal Separately
7		2852012		1	GASKET
8		2852016		1	SPACER
9		2852013		1	STRAINER, ELEMENT, Tube; Oil Suction, Includes Screen Which Is Not Serviced Separately
10		4895538		1	SCREW, Flange, M10 x 120

580M

CRANKCASE COVERS



BS07M802

02-12

p1

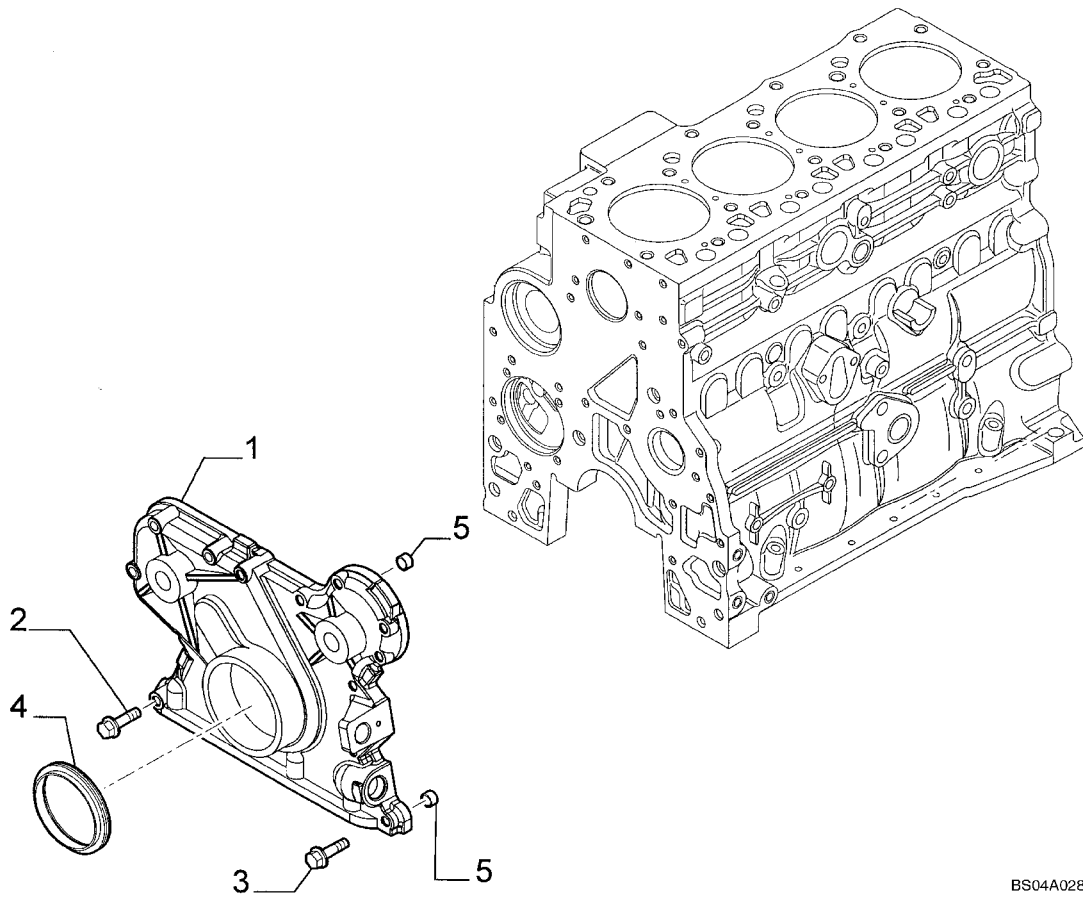
02/08

CRANKCASE COVERS

REF	FN	PART NUMBER	YR/SN	QTY	DESCRIPTION
1		4899026		2	DOWEL
2		4899091		4	SCREW, Hex Flg, M8 x 1.25 x 40
3		4899093		5	SCREW, Hex Flg, M10 x 1.5 x 30
3		4899073		1	SCREW, Hex Flg, M12 x 1.75 x 30
4		16882515		1	PLUG, Plug
		4899115		1	O-RING, (Part of 16882515), Not Shown
5		2853671		1	HOUSING
7		2852519		1	O-RING
8		4895355		2	SCREW, Torx Rd Hd, M5 x .8 x 17
9		2855287		1	HOUSING, - ASSY

580M

CYLINDER BLOCK - COVERS



BS04A028

02-13

p1

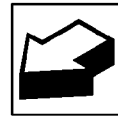
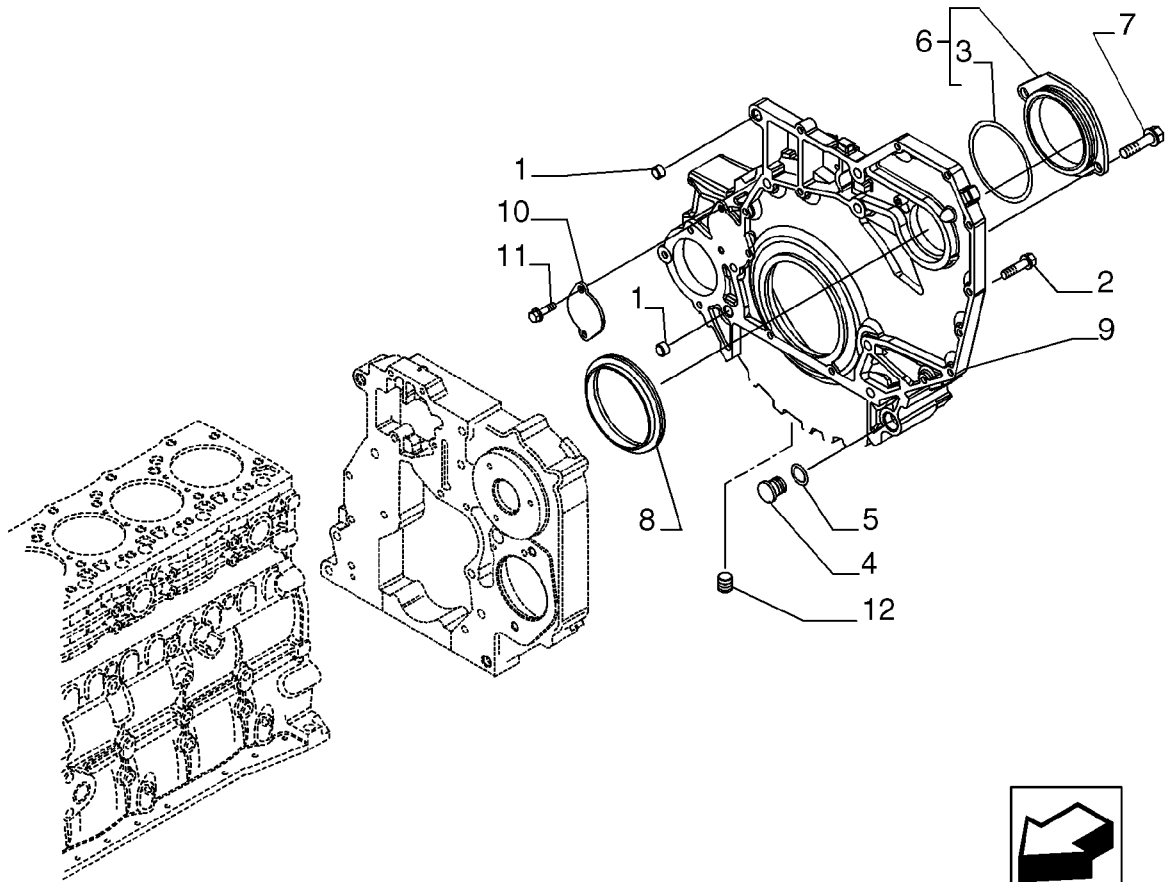
02/08

CYLINDER BLOCK - COVERS

REF	FN	PART NUMBER	YR/SN	QTY	DESCRIPTION
1		4897024		1	COVER, Front Gear
2		4899078		5	SCREW, Hex Flg, M8 x 1.25 x 45
3		4899063		8	SCREW, Hex Flg, M8 x 1.25 x 30
4		4890832		1	SEAL
5		4891209		2	DOWEL

580M

CRANKCASE COVERS



BS07N104

02-14

p1

02/08

CRANKCASE COVERS

REF	FN	PART NUMBER	YR/SN	QTY	DESCRIPTION
1		4899026		2	DOWEL
2		4899109		3	SCREW, Hex, M10 x 1.5 x 80
2		4892915		7	SCREW, M10 x1.5 x 40
2		4899076		5	SCREW, Hex Flg, M12 x 1.75 x 80
2		4899074		2	SCREW, Hex Flg, M12 x 1.75 x 120
2		4899143		1	SCREW, Hex Flg, M10 x 1.5 x 140
2		2852865		2	SCREW
3		2854075		1	O-RING
4		4895378		2	PLUG
5		4895379		2	O-RING, M21.82 ID x 3.53 Thk
6		2854073		1	COVER
7		4899020		2	SCREW
8		4890833		1	SEAL
9		2855178		1	HOUSING
10		4895155		1	COVER
11		4899068		2	SCREW, Hex Flg, M8 x 1.25 x 16
12		4893036		1	PLUG, Alternate part to 2854866
12		{ 2854866}		1	Plug, Alternate part to 4893036

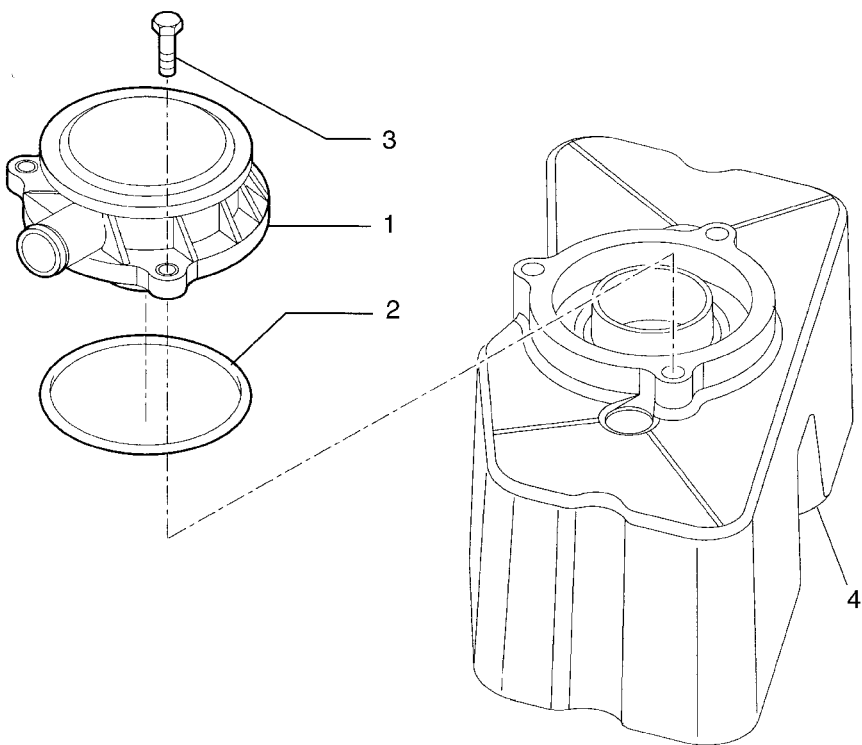
580M

02-15

p1

02/08

BREATHER - ENGINE



BS04A030

02-15

p1

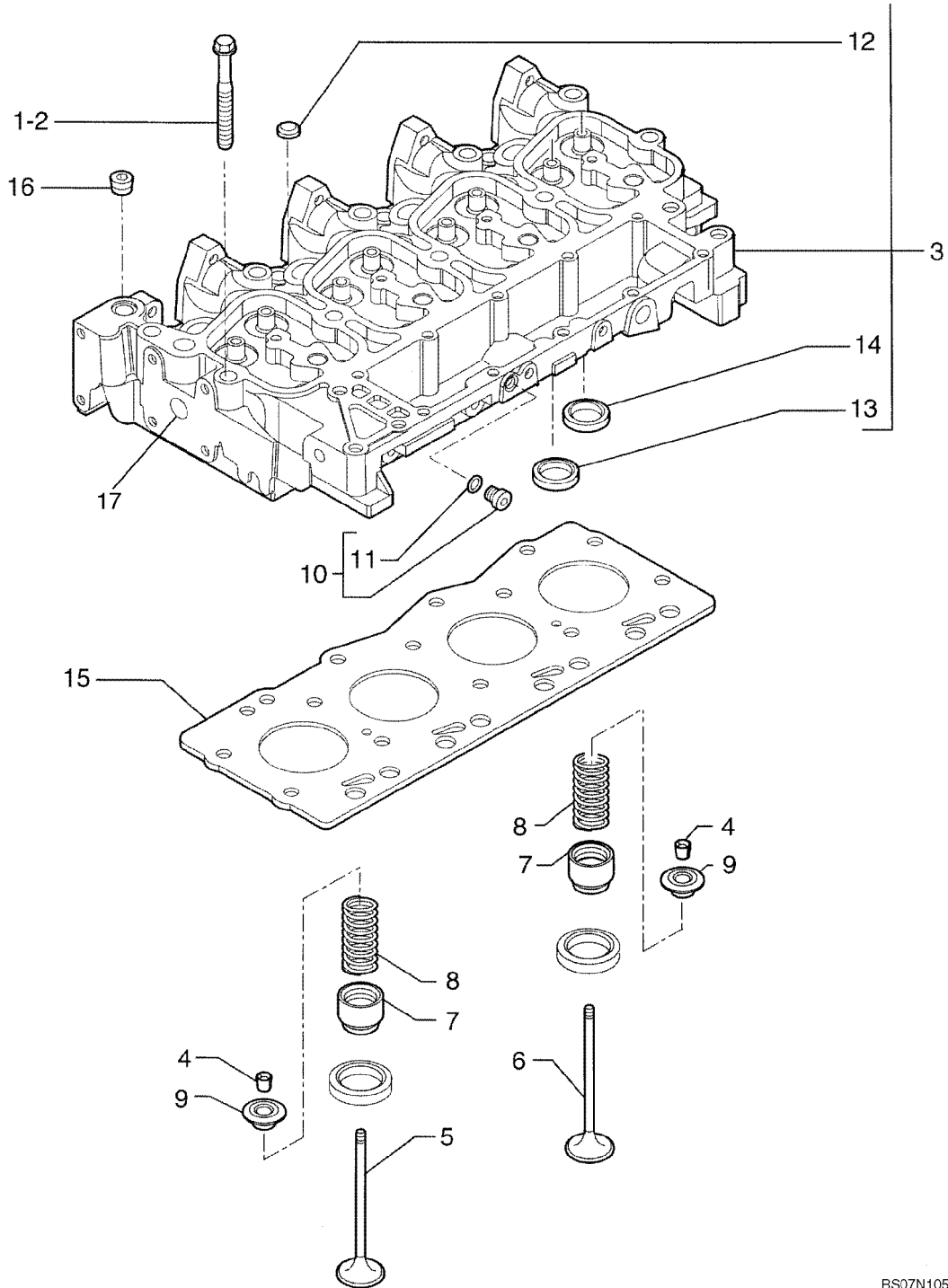
02/08

BREATHER - ENGINE

REF	FN	PART NUMBER	YR/SN	QTY	DESCRIPTION
1		2852531		1	BREATHER
2		2852028		1	GASKET
3		4899110		3	SCREW, Hex Flg, M6 x 1 x 20, Alternate Part to 4899092
3		4899092		3	SCREW, Hex Flg, M6 x 1 x 25, Alternate Part to 4899110
4		REF		1	INSTRUCTION, COVER; See Figure 02-17

580M

CYLINDER HEAD



02-16

p1

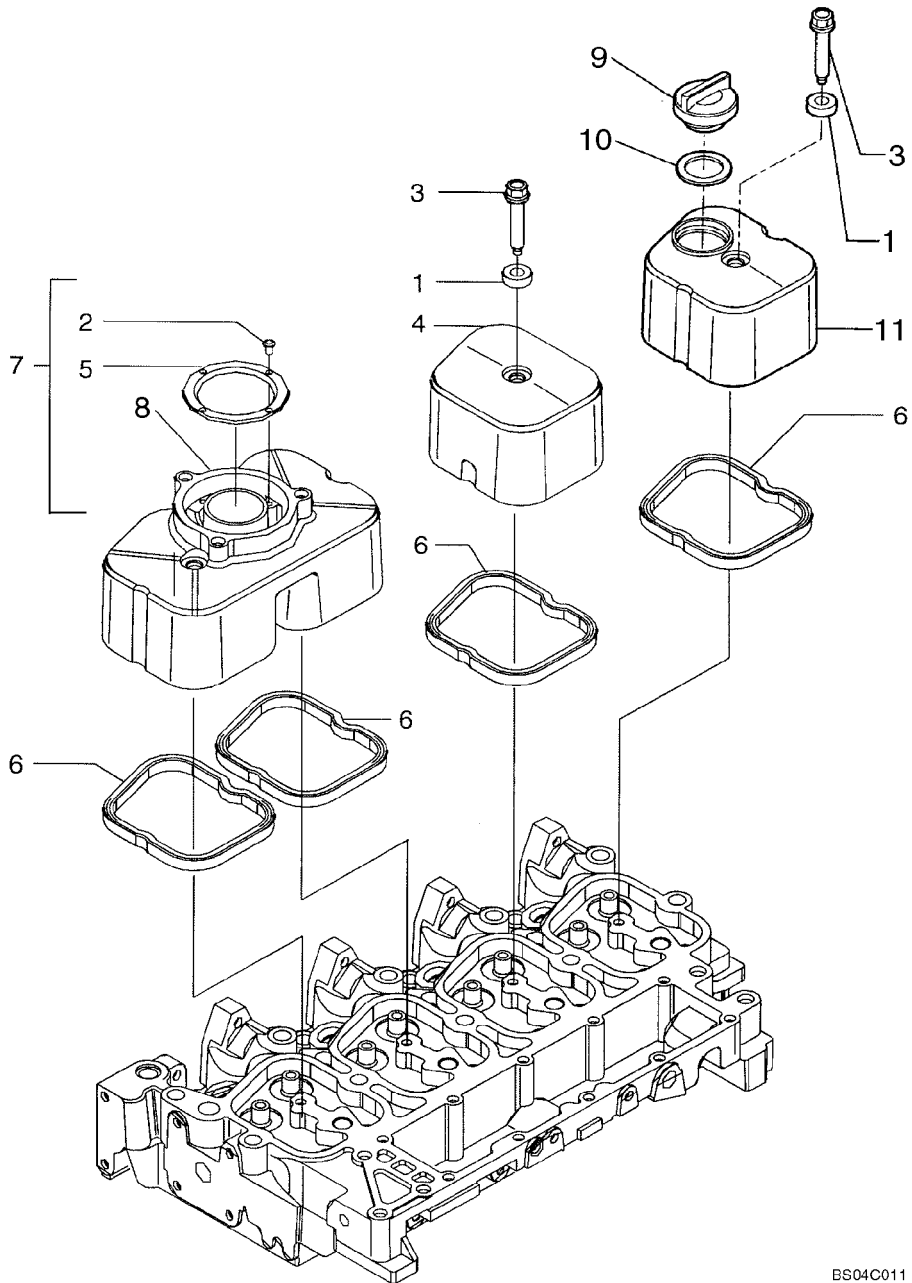
02/08

CYLINDER HEAD

REF	FN	PART NUMBER	YR/SN	QTY	DESCRIPTION
1		4892861		4	SCREW, Wash Hd, M12 x 1.25 x 73
2		4892859		10	SCREW, Wash Hd, M12 x 1.25 x 143
3		2856017		1	CYLINDER HEAD, Incl. Ref 12 - 14, 17
4		4895183		16	COLLET
5		4895188		4	VALVE, ENG EXHAUST, STD
6		4895187		4	VALVE, ENGINE, INLET, STD
7		4895347		8	SEAL
8		4895215		8	SPRING, VALVE
9		4895184		8	RETAINER
10		4899009		1	PLUG, M10 x 1; Incl. Ref 11
11		4899072		1	O-RING
12		4895179		3	PLUG
13		4897178		4	VALVE SEAT, Intake
14		4897179		4	VALVE SEAT, Exhaust
15		2830919		1	GASKET, CYLINDER HEAD, SP=1.25
15		2830920		1	GASKET, CYLINDER HEAD, SP=1.15
16		4895078		5	PLUG
17		4895085		1	PLUG, 25.74mm

580M

CYLINDER HEAD - COVERS



02-17

p1

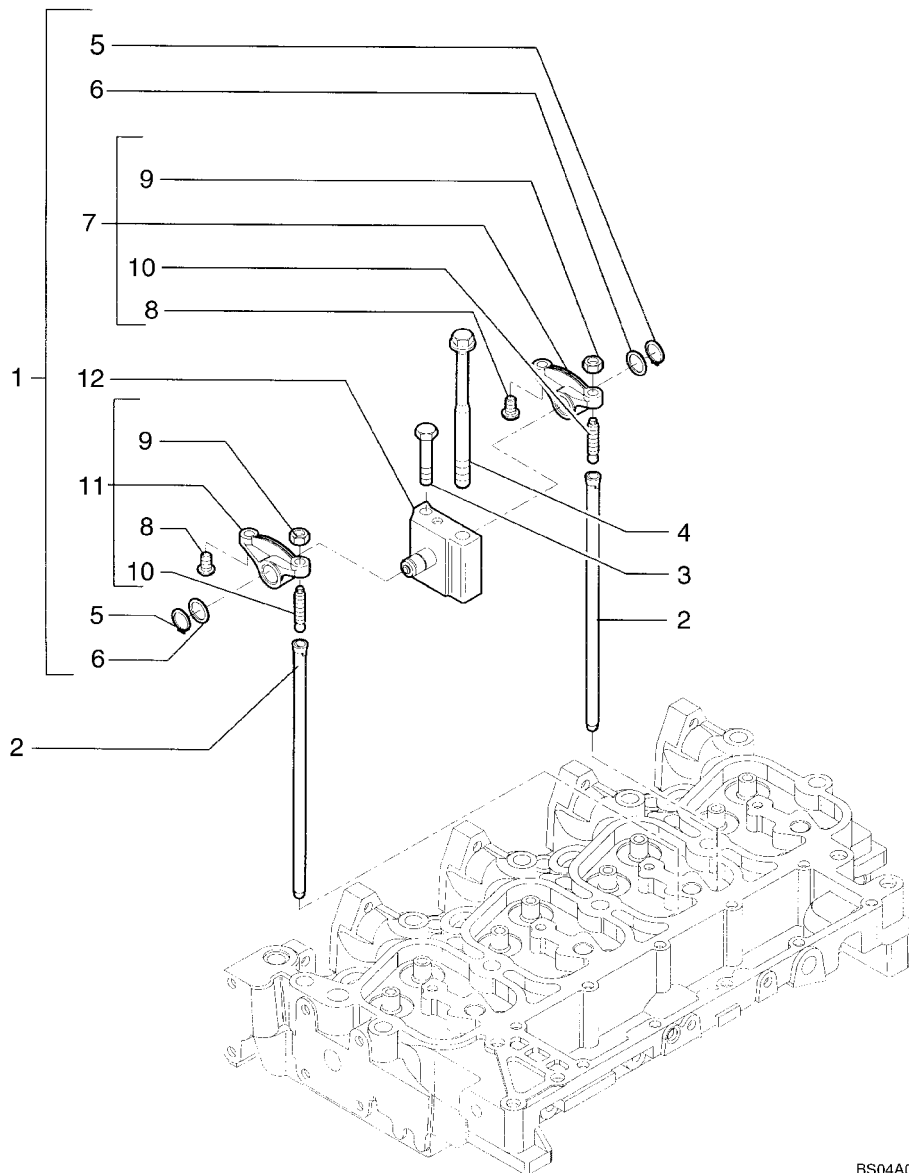
02/08

CYLINDER HEAD - COVERS

REF	FN	PART NUMBER	YR/SN	QTY	DESCRIPTION
1		4895360		4	ISOLATOR
2		2830281		4	SCREW, SELF TAP
3		4895214		4	SCREW, Flange
4		2852032		1	COVER
5		2830775		1	BAFFLE
6		2852033		4	GASKET
7		2830784		1	COVER, VALVE, Incl. Ref 2, 5
8		2830769		1	COVER
9		4895202		1	CAP, FILLER
10		4895296		1	SEAL
11		2852894		1	COVER

580M

CYLINDER HEAD - VALVE MECHANISM



02-18

p1

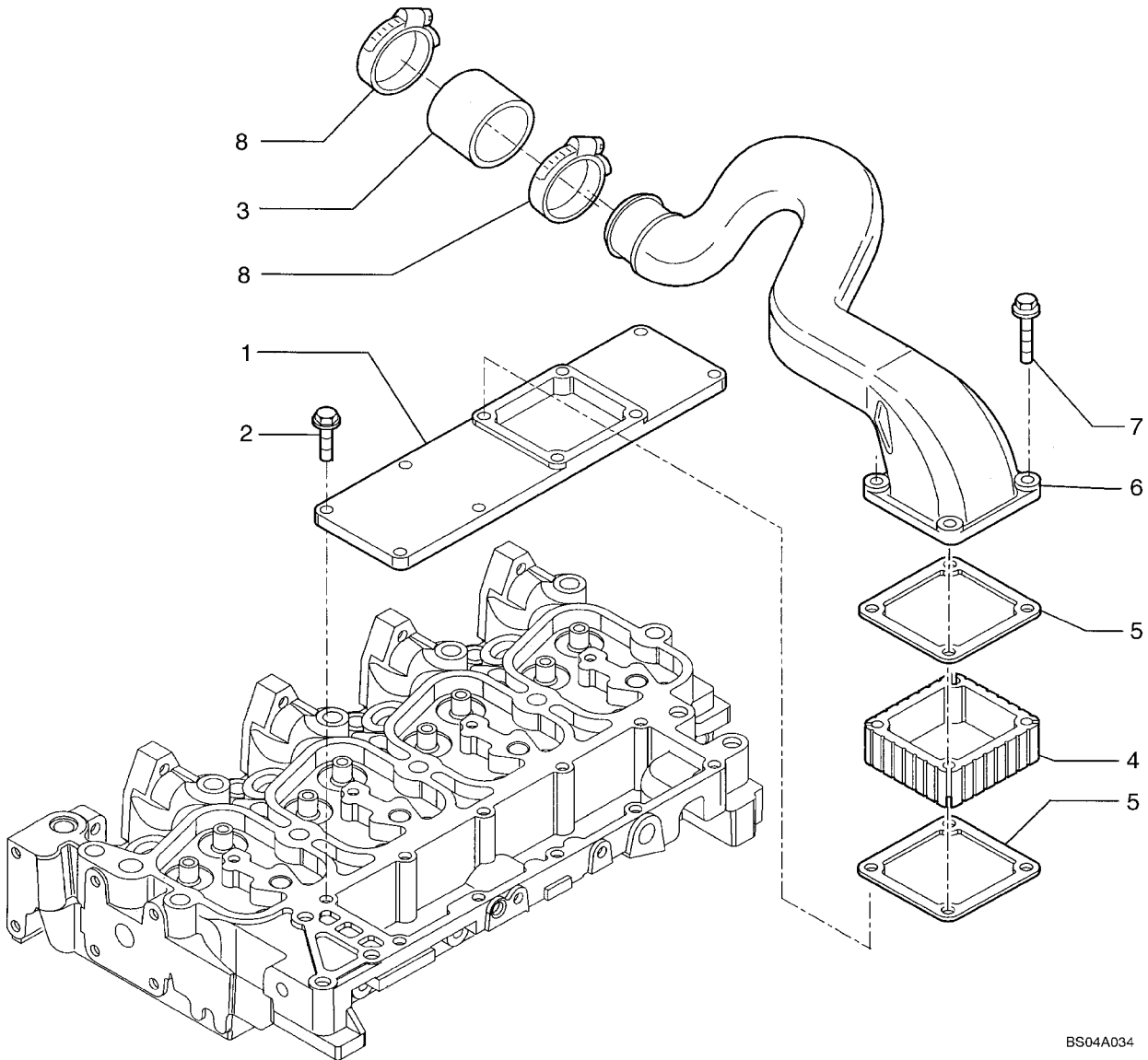
02/08

CYLINDER HEAD - VALVE MECHANISM

REF	FN	PART NUMBER	YR/SN	QTY	DESCRIPTION
1		4895195		4	ROCKER ARM, Incl. Ref 5 - 12
2		4895361		8	ROD, PUSH
3		2852866		4	SCREW, Hex
4		4892860		4	SCREW, Wash Hd, M12 x 1.25 x 183
5		4895363		2	RING, SNAP
6		4895364		2	WASHER
7		4895196		1	ROCKER ARM, Incl. Ref 8 - 10
8		4895365		2	INSERT
9		4895198		2	NUT
10		4895199		2	SCREW
11		4895200		1	ROCKER ARM, Incl. Ref 8 - 10
12		4895204		1	SUPPORT

580M

MANIFOLD - INTAKE



02-19

p1

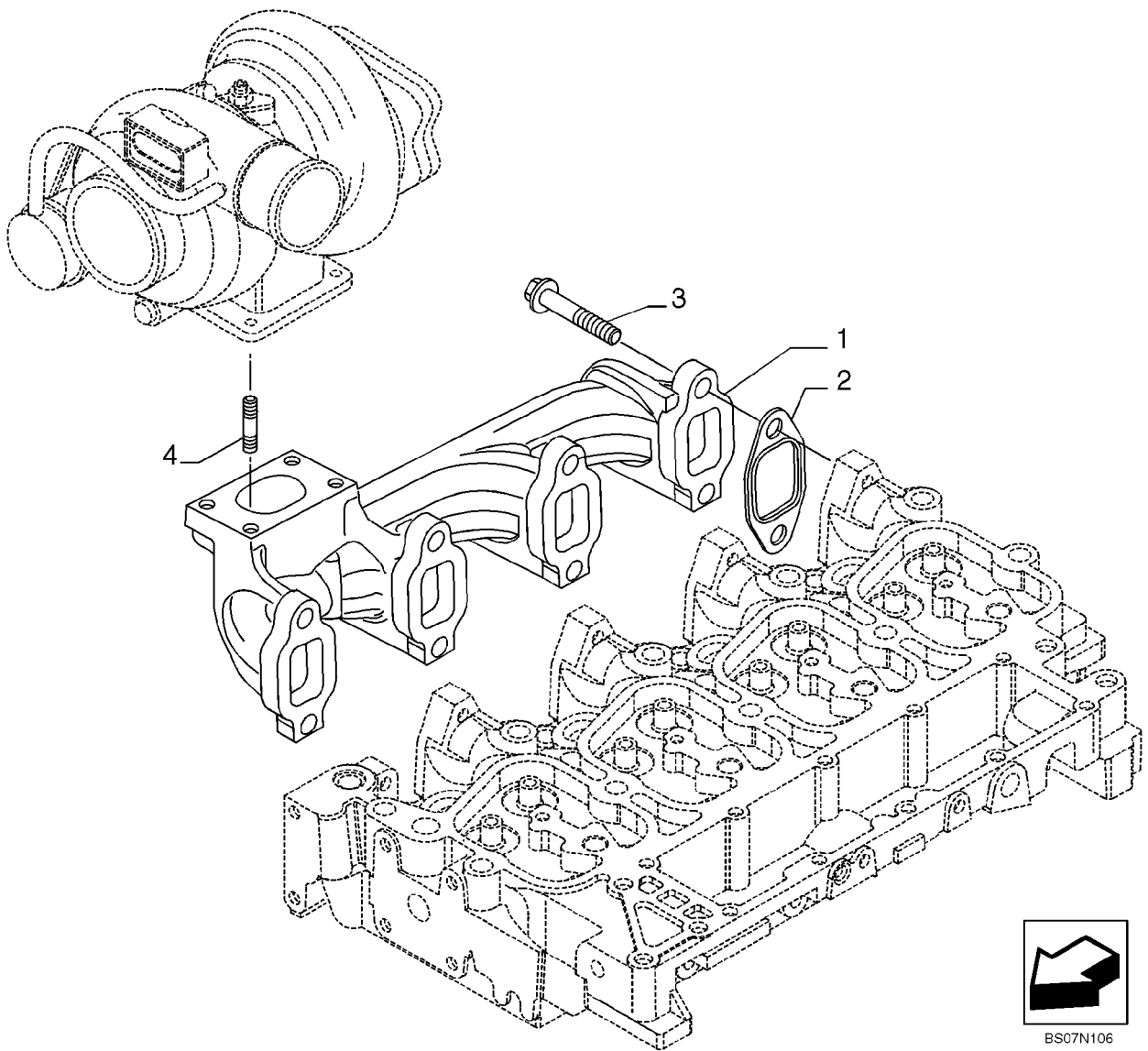
02/08

MANIFOLD - INTAKE

REF	FN	PART NUMBER	YR/SN	QTY	DESCRIPTION
1		2852044		1	COVER, Manifold Inlet; Aluminum; If Used
1		2856462		1	MANIFOLD, INLET, COVER, Plastic; If Used
2		4899039		6	SCREW, Hex Flg, M8 x 1.25 x 25
3		2852029		1	SLEEVE
4		2856263		1	SPACER, Intake
5		4899921		2	GASKET
6		2852030		1	PIPE, SUCTION
7		4895294		4	SCREW, Flange, M8 x 80
8		4895641		2	COLLAR CLAMP

580M

EXHAUST MANIFOLD



BS07N106

02-20

p1

02/08

EXHAUST MANIFOLD

REF	FN	PART NUMBER	YR/SN	QTY	DESCRIPTION
1		2831203		1	MANIFOLD, EXHAUST
2		2852743		4	GASKET
3		2852834		8	SCREW
4		4899859		4	STUD

580M



Suggest:

If the above button click is invalid.

Please download this document

first, and then click the above link

to download the complete manual.

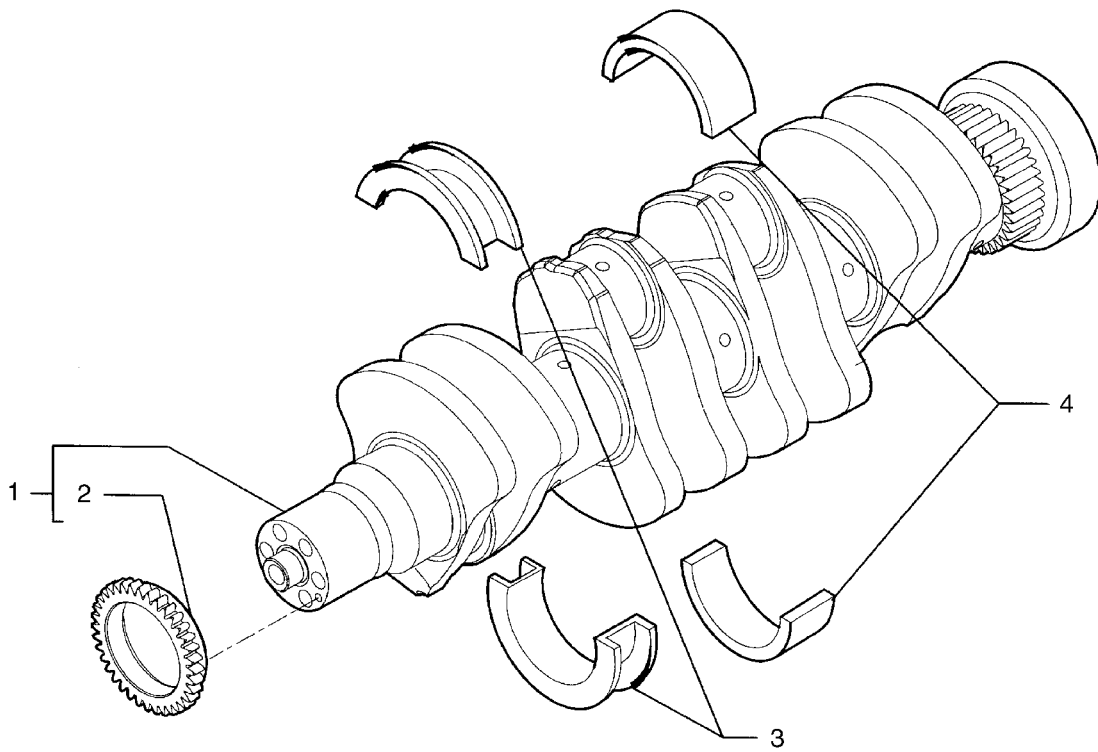
Thank you so much for reading

02-21

p1

11/07

CRANKSHAFT



BS04A036

<https://www.ebooklibonline.com>

Hello dear friend!

Thank you very much for reading.

Enter the link into your browser.

The full manual is available for immediate download.

<https://www.ebooklibonline.com>