

465 SKID STEER PARTS CATALOG

Publication Part Number: 7-9551 NA



Photograph may show installation of optional equipment.

DB05A000

This unit first became available in 01-2005.

- Table of Contents
- General Information
- Section 2 – Engine
- Section 3 – Fuel System
- Section 4 – Electrical System
- Section 5 – Tracks / Steering
- Section 6 – Power train
- Section 7 – Brakes
- Section 8 – Hydraulics
- Section 9 – Chassis/Attachments
- Index

CNH America, LLC reserves the right to make improvements in design or changes in specifications at any time without incurring any obligation to install them on units previously sold.

All data given in this publication is subject to production variations. Dimensions and weights are only approximate. Illustrations do not necessarily show products in standard condition. For exact information about any particular product, please consult your Dealer

Revision History			
Issue	Issue Date	Applicable Machines	Remarks
First Edition	11-2004	465	7-9550NA
Revision 1	01-2006	465	7-9551 NA

TABLE OF CONTENTS

02-01	RADIATOR - COOLANT RECOVERY SYSTEM
02-02	FAN - FAN BELT
02-03	EXHAUST SYSTEM
02-04	ENGINE - AIR CLEANER
02-05	GRID HEATER
02-06	ENGINE - MOUNTING
02-06A	OIL FILL, ENGINE
02-07	ENGINE - PUMP DRIVE (WITH SPLIT PUMP CONFIGURATION)
02-07A	ENGINE - PUMP DRIVE (WITH TANDEM PUMP CONFIGURATION)
02-08	ENGINE
02-08A	ENGINE - BLOCK HEATER
02-09	CYLINDER BLOCK
02-10	CYLINDER BLOCK
02-11	OIL PUMP, PAN
02-12	CYLINDER BLOCK - COVERS
02-13	CYLINDER BLOCK - COVERS
02-14	CYLINDER BLOCK - COVERS
02-15	BREATHER - ENGINE
02-16	CYLINDER HEAD
02-17	CYLINDER HEAD - COVERS
02-18	CYLINDER HEAD - VALVE MECHANISM
02-19	MANIFOLD - INTAKE
02-20	MANIFOLD - EXHAUST
02-20A	TURBOCHARGER
02-21	CRANKSHAFT
02-22	PISTONS - CONNECTING ROD
02-23	PISTONS - CONNECTING ROD
02-24	FLYWHEEL - ENGINE
02-25	PULLEY - CRANKSHAFT
02-26	CAMSHAFT
02-27	ENGINE, OIL
02-27A	TURBOCHARGER, PIPES AND CONNECTIONS
02-28	OIL PUMP - ENGINE
02-29	OIL FILTERS - ENGINE
02-30	OIL FILTER AND COOLER
02-31	WATER PUMP
02-32	COOLING SYSTEM - ENGINE
02-33	THERMOSTAT - ENGINE COOLING SYSTEM
02-34	WATER PUMP - CONTROL
02-35	FAN DRIVE
02-36	POWER TAKE OFF
02-37	ENGINE - LIFT HOOK
03-01	FUEL LINES
03-02	CONTROLS - THROTTLE
03-03	FUEL INJECTION PUMP
03-04	FUEL INJECTION SYSTEM
03-05	FUEL INJECTION SYSTEM
03-06	FUEL INJECTION SYSTEM
03-07	FUEL FILTER
03-08	FUEL PUMP
03-09	FUEL INJECTION SYSTEM
03-10	FUEL INJECTION SYSTEM

TABLE OF CONTENTS

04-01	STARTER
04-02	ALTERNATOR
04-03	STARTER MOUNTING - ALTERNATOR MOUNTING
04-04	BATTERY - CABLES
04-05	DISCONNECT SWITCH - REMOTE JUMP START
04-06	HARNESS, FRONT - CHASSIS
04-07	HARNESS, REAR - CHASSIS
04-09	SWITCH MOUNTING - CHASSIS OPTIONS
04-11	HARNESS - CAB, SEAT BAR
04-12	HARNESS - DOOR, FRONT
04-13	HARNESS, FRONT - AUXILIARY
04-14	WIPER, WINDSHIELD
04-15	CONTROLS, RIGHT HAND - HANDLE
04-15A	CONTROLS, RIGHT HAND - HANDLE
04-16	CONTROLS, LEFT HAND - HANDLE
04-16A	CONTROLS, LEFT HAND - HANDLE
04-17	LAMP ASSY - BEACON, ROTATING
04-18	HORN - MOUNTING
04-19	BACKUP ALARM
04-20	ELECTRICAL ACCESSORIES SOCKET
06-01	HYDROSTATICS - PUMP, SUPPLY AND RETURN (SPLIT PUMP CONFIGURATION)
06-01A	PUMP, TANDEM - MOUNTING (TANDEM PUMP CONFIGURATION)
06-01B	HYDROSTATICS - PUMP, SUPPLY AND RETURN (TANDEM PUMP CONFIGURATION)
06-02	OIL COOLER - MOUNTING
06-03	OIL COOLER - MOUNTING (HIGH FLOW)
06-04	HYDROSTATICS - CASE DRAIN
06-05	HYDROSTATICS - DRIVE MOTORS (WITH SPLIT PUMP CONFIGURATION)
06-05A	HYDROSTATICS - DRIVE MOTORS (WITH TANDEM PUMP CONFIGURATION)
06-06	HYDROSTATICS - TWO SPEED (SPLIT PUMP CONFIGURATION)
06-06A	HYDROSTATICS - TWO SPEED (TANDEM PUMP CONFIGURATION)
06-07	HYDROSTATICS - TWO SPEED, VALVE ASSY
06-08	FILTER ASSY - MOUNTING
06-09	TANDEM PUMP
06-10	TANDEM PUMP
06-11	TANDEM PUMP
06-12	TANDEM PUMP
06-13	TANDEM PUMP
06-14	TANDEM PUMP
06-15	TANDEM PUMP
06-16	TANDEM PUMP
06-17	PUMP, GEAR
06-17A	PUMP, GEAR (TANDEM PUMP CONFIGURATION)
06-18	PUMP, GEAR (HIGH FLOW)
06-19	MOTOR ASSY - SINGLE SPEED
06-20	MOTOR ASSY - SINGLE SPEED
06-21	MOTOR ASSY - SINGLE SPEED
06-22	MOTOR ASSY - TWO SPEED
06-23	MOTOR ASSY - TWO SPEED
06-24	MOTOR ASSY - TWO SPEED
06-25	MOTOR ASSY - TWO SPEED
06-26	MOTOR ASSY - TWO SPEED
06-27	MOTOR ASSY - TWO SPEED

<https://www.ebooklibonline.com>

Hello dear friend!

Thank you very much for reading.

Enter the link into your browser.

The full manual is available for immediate download.

<https://www.ebooklibonline.com>

TABLE OF CONTENTS

06-28	PUMP, TANDEM (87350025)
06-29	PUMP, TANDEM (87350025)
06-30	PUMP, TANDEM (87350025)
06-31	PUMP, TANDEM (87350025)
06-32	PUMP, TANDEM (87350025)
06-33	PUMP, TANDEM (87350025)
06-34	AXLE ASSY
06-35	DRIVE LINE
06-36	WHEELS
07-01	BRAKE SYSTEM - HYDRAULIC
07-02	BRAKE SYSTEM - HYDRAULIC (WITH TANDEM PUMP CONFIGURATION)
08-01	HYDRAULICS - LOADER LIFT (WITH SPLIT PUMP CONFIGURATION)
08-01A	HYDRAULICS - LOADER LIFT (WITH TANDEM PUMP CONFIGURATION)
08-02	HYDRAULICS - LOADER BUCKET (WITH SPLIT PUMP CONFIGURATION)
08-02A	HYDRAULICS - LOADER BUCKET (WITH TANDEM PUMP CONFIGURATION)
08-03	HYDRAULICS - SELF-LEVELING
08-04	VALVE ASSY, SELF LEVEL
08-05	HYDRAULICS - AUXILIARY SYSTEM
08-06	HYDRAULICS - RIDE CONTROL
08-07	HYDRAULICS - COUPLER SYSTEM
08-08	VALVE ASSY, CONTROL - HIGH FLOW
08-09	VALVE ASSY, CONTROL - LOADER
08-10	VALVE ASSY, CONTROL - LOADER
08-11	CYLINDER - LOADER LIFT
08-12	CYLINDER - LOADER BUCKET
08-13	HYDRAULIC ATTACHMENTS - CONTROLS
08-14	HIGH FLOW (SPLIT PUMP CONFIGURATION)
08-14A	HIGH FLOW (TANDEM PUMP CONFIGURATION)
08-15	COMBINATION VALVE - HIGH FLOW
08-16	HIGH FLOW - AUXILIARY SYSTEM
08-17	SECONDARY FRONT AUXILIARY
08-18	SECONDARY FRONT AUXILIARY - VALVE ASSY
08-19	SECONDARY FRONT AUXILIARY
08-20	VALVE ASSY, CONTROL - HIGH FLOW
09-01	FRAME - LOADER LIFT
09-02	SUPPORT - LOADER FRAME
09-04	COUPLER, MECHANICAL
09-05	COUPLER, HYDRAULIC
09-06	BUCKETS, LOADER - 1860 MM (73 IN) WIDE BUCKET
09-06A	BUCKETS, LOADER - 2083 MM (82 IN) WIDE BUCKET
09-07	BUCKETS, LOADER - 2134 MM (84 IN) WIDE BUCKET
09-07A	BUCKET, CUTTING EDGE (BOLT-ON CUTTING EDGE)
09-07B	PALLET FORK
09-08	CHASSIS
09-09	PLATES, FLOOR
09-10	CONSOLE, CONTROL
09-11	CONTROLS - LOADER AND GROUND DRIVE
09-12	LINKAGE - LOADER AND GROUND DRIVE (SPLIT PUMP CONFIGURATION)
09-12A	LINKAGE - LOADER AND GROUND DRIVE (TANDEM PUMP CONFIGURATION)
09-13	LINKAGE - AUXILIARY SYSTEM
09-14	HOOD
09-15	DOOR, REAR

TABLE OF CONTENTS

09-16	MAT, FLOOR
09-17	COUNTERWEIGHTS
09-18	SEAT, MOUNTING - NON-SUSPENSION
09-19	SEAT, MOUNTING - SUSPENSION
09-19A	SEAT, MOUNTING - SUSPENSION, RETRACTABLE SEAT BELT
09-20	SEAT - SUSPENSION
09-21	SEAT - SUSPENSION
09-22	SEAT - SUSPENSION
09-23	FRAME AND SEAT BAR
09-24	LIFT HOOK
09-25	REAR LATCH AND PIVOT
09-26	HEAT SHIELD
09-27	HEADLINER
09-28	DOOR, FRONT - WINDSHIELD
09-29	DOOR, FRONT - MOUNTING, FRAME
09-29A	EXTENSION PANELS
09-30	DOOR, FRONT - LATCH
09-31	WINDOWS - SIDE AND TOP
09-33	HEATER AND AIR CONDITIONING - MOUNTING
09-34	HEATER AND AIR CONDITIONING - COMPRESSOR MOUNTING
09-35	HEATER AND AIR CONDITIONING - RECEIVER-DRIER MOUNTING
09-36	HEATER AND AIR CONDITIONING - HOSES
09-37	HEATER AND AIR CONDITIONING - HEADLINER
09-38	HEATER AND AIR CONDITIONING ASSY
09-38A	HEATER AND AIR CONDITIONING ASSY
09-39	HEATER - MOUNTING
09-40	HEATER
09-41	HEATER ASSY
09-42	DECALS
09-43	DECALS
09-44	DECALS - ENGLISH
09-45	DECALS - BRAZILIAN PORTUGUESE, FRENCH CANADIAN, LATIN AMERICAN SPANISH

GENERAL INFORMATION

PROPRIETARY NOTICE

The contents of this manual are proprietary data of this company. Reproduction or use of any part for other than the operation and maintenance of our equipment is permissible only if expressly authorized in writing.

Additional copies may be obtained from your dealer. Address requests for copies to your Dealer and refer to the publication part number appearing on the bottom of the rear catalog cover or on the title page.

COMPANY POLICY

Company policy, which is one of continuous improvement, reserves the right to change prices and to make changes in design and specification at any time without notice and without obligation to modify units previously built.

All data given in this book is subject to production variations. Dimensions and weights are approximate only and the illustrations do not necessarily show machines in standard condition. For exact information about any particular machine please consult your dealer.

PARTS AND ACCESSORIES

Genuine parts and accessories have been specifically designed for these machines.

We would like to point out that “non-genuine” parts and accessories have NOT been examined and released by the Company. The installation and or use of such products could have negative effects upon the design characteristics of your machine and thereby affect its safety. The company is not liable for any damage caused by the use of “non-genuine” parts and accessories.

IMPROVEMENTS

We are continually striving to improve our products. We reserve the right to make improvements or changes when it becomes practical and possible to do so, without incurring any obligation to make changes or additions to the equipment sold previously.

MODEL CODES

The range of machines listed may not be available in all countries or markets therefore, for the latest information consult your local dealer.

OWNER ASSISTANCE

We want you to be completely satisfied with your investment. Normally any problems with your equipment will be handled by your dealer's Service Department; however, misunderstandings can occur. If your problem has not been handled to your satisfaction, we suggest the following:

1. Contact the owner or General Manager of the dealership, explain the problem, and request assistance. When additional assistance is needed, your dealer has direct access to our office.
2. Provide your dealer with:
 - Your Name, Address, and Telephone number
 - Machine Model and Serial Number
 - Dealership Name and Address
 - Machine purchase date and amount of use
 - Nature of problem

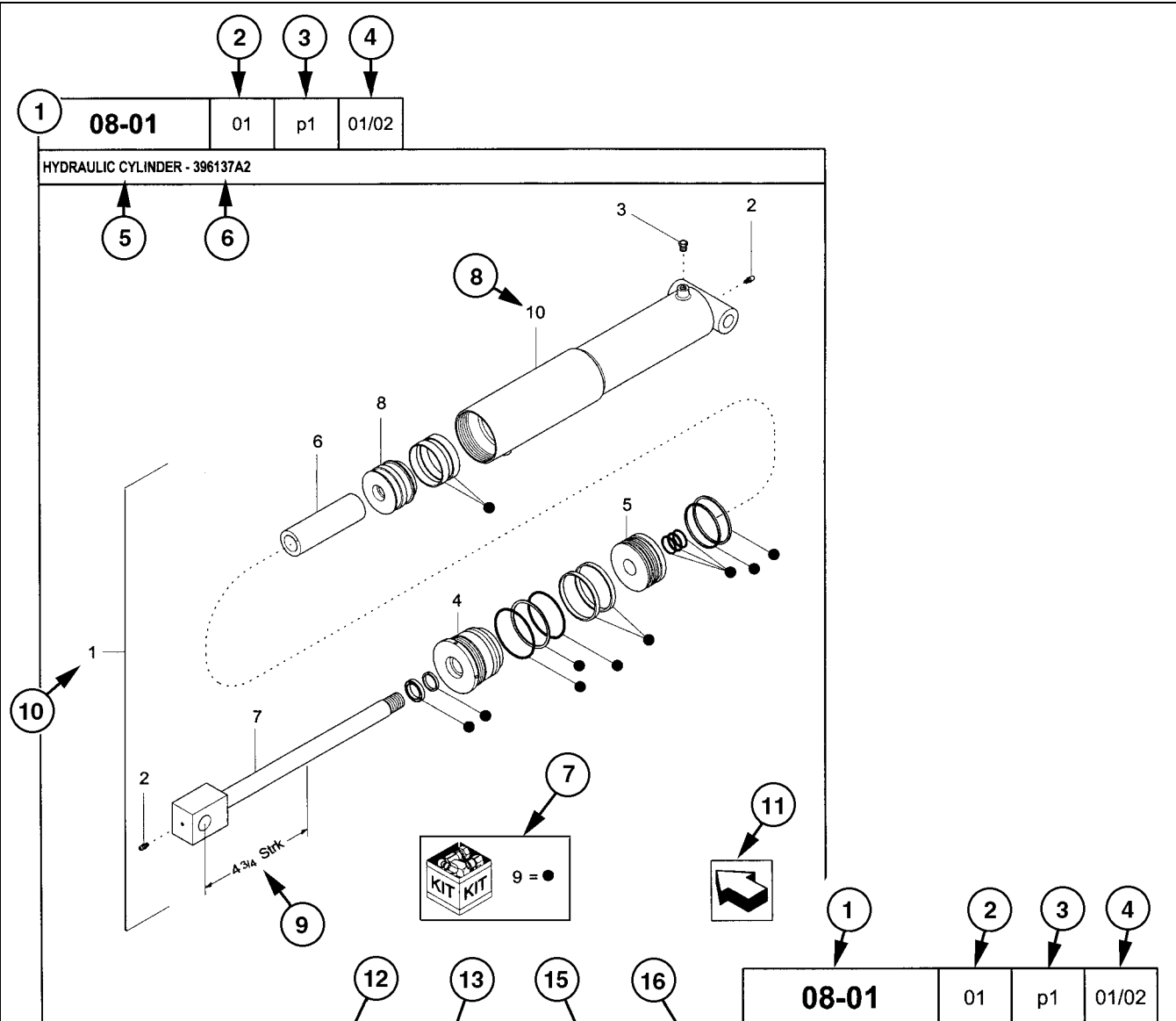
Be aware that your problem will likely be resolved in the dealership using the dealer's facilities, equipment, and personnel. So it is important that your initial contact be with the dealer.

SPARE PARTS

To maintain operating efficiency, use original spare parts.

When ordering parts, give the following information:

- Machine Model
- Machine and Engine Serial Numbers
- Part Number from the Parts Catalog



REF	FN	PART NUMBER	YR/SN	QTY	DESCRIPTION
1	1	396137A2	BTW 01/85 & 02/02	1	CYLINDER ASSY. 4-3/4 in strk, Inc 2-10
2		31-95	Before 01/85	2	FITTING
2		219-8	From 01/85	2	NIPPLE, LUBE Grease, 1/4 tpr x 17/32
3		{402475A2}		1	BREATHER
4		402474A1		1	CAP CYLINDER END
5		402468A1	BSN JJC0189199	1	PISTON ROD/GLAND
5		145221C3	ASN JJC0189200	1	PISTON
6		402471A1		1	SPACER
7		402473A1		1	ROD, PISTON
8		402469A1		1	PISTON ROD/GLAND
9		402476A1		1	PACKAGE, SEALS
10		NSS		1	NOT SERVICED SEPARAT CASE ASSEMBLY
(1)	08-20				
		STANDARD			
		MODELS			

HOW TO USE YOUR PARTS CATALOG

1. Figure Number
2. Sequence Code within the Figure Number
3. Page Number within the Sequence Code
4. Date of Printing (month / year)
5. Figure Description
6. General information regarding the figure
7. Parts supplied in repair kits per symbol reference
8. Figure call-out of the part number (REF)
9. Technical specifications relating to the part indicated
10. Figure call-out includes bracketed items, the included items may also be listed in the additional description area
11. Orientation - Arrow indicates front of the machine
12. Footnote - Additional information relating to the part number. In this example, 08-20 equals another figure that this part is shown on
13. Part Number
 - NSS = Not Serviced Separately (Non-serviced parts)
 - Bracketed numbers = not available as service parts in this market
14. Not Available as service part in this market
15. YR/SN
 - Year
 - Before 01/85 = Part valid for production January 1985 and before
 - From 01/85 = Part valid for production from January 1985 and after
 - BTW 01/85 & 02/02 = Part valid for machines produced between January 1985 and February 2002.
 - Serial Number (P.I.N.)
 - BSN JJC0268800 = Part valid for serial number JJC0268800 and below
 - ASN JJC0268800 = Part valid for serial number JJC0268800 and above
 - BTW JJC0178000 & JJC0179000 = Part valid for serial numbers between JJC0178000 & JJC0179000
16. Total Quantity of the Part referred to in the page. The quantity can be replaced by the following indications:
 - AR = As Required
 - X = As required
17. Part Description
18. Additional description of the part to help confirm identification
19. Figure Notes
20. Model Number(s)

RIGHT-HAND AND LEFT-HAND

The reference to right-hand and left-hand in this catalog is identified by the operator standing at the rear of the basic unit (without rear attachment), looking toward the front of the machine (in normal forward travel).

For pages covering any machine attachments, right-hand and left-hand are defined by the operator sitting in the position for proper operation of the attachment.

DIMENSIONS

Metric and U.S. hardware dimensions do not show the numeric designations of standard coarse threads. A number following a semi colon (;) is the class or grade of hardware. A comma (,) represents the decimal point (.) used in U.S. dimensions.

EXPLANATION OF ABBREVIATIONS

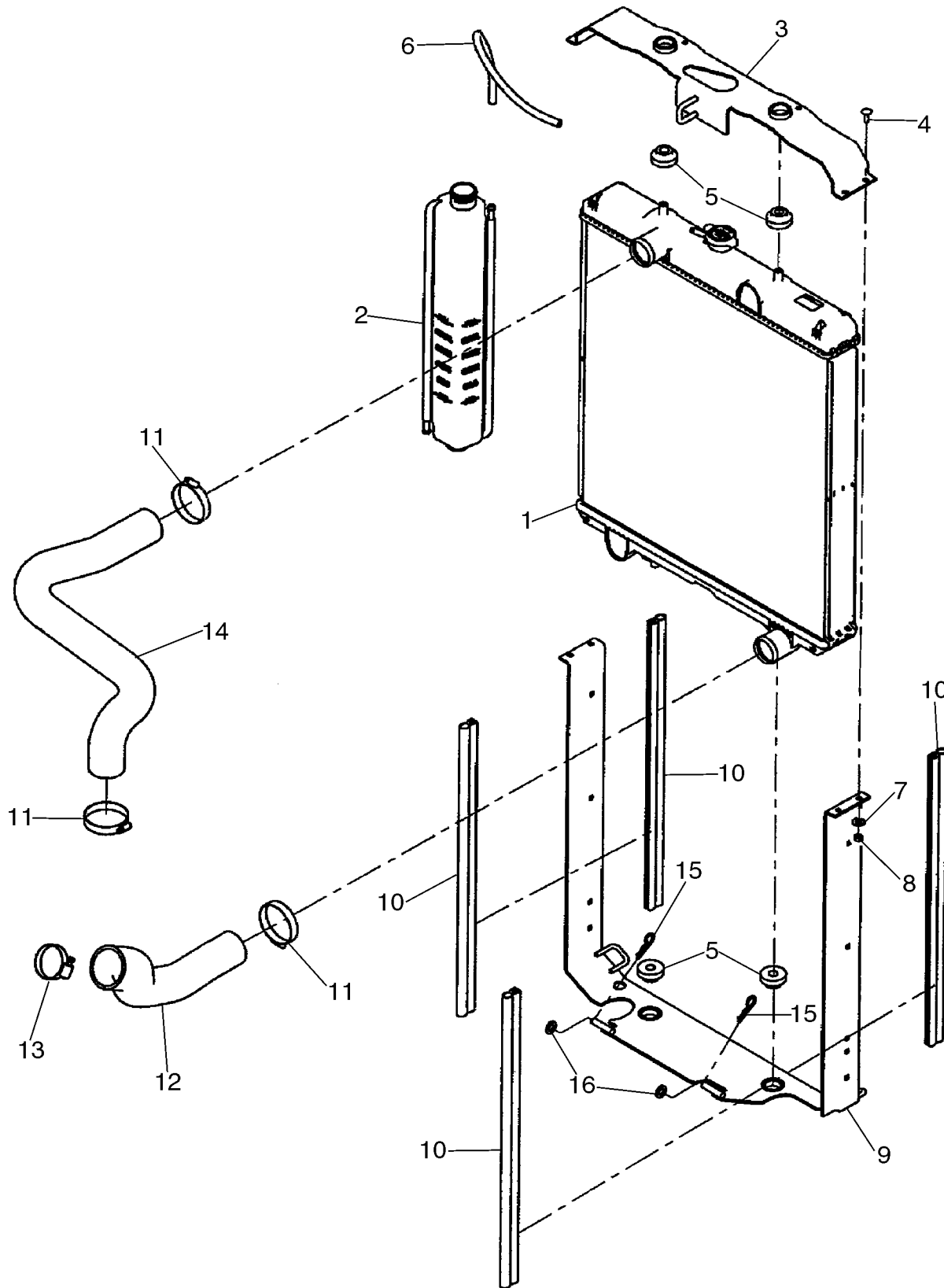
AC	Alternating Current
adj	adjustable
amp	ampere
AR	As required
ASN	Serial number and after P.I.N. and after
blkhd	bulkhead
br	branch
BSN	before Serial number before P.I.N.
BTW	between
cc	cubic centimetre
cl	class
cmprsn	compression
cn pt	cone point
cp pt	cup point
CRS	Chrome Alloy Steel
CST	Carbon Steel
cu yd	cubic yard
DC	Direct Current
deg	degree
dg pt	dog point
dia	diameter
dr type	drive type
fc	face
fc sl	face seal
fem	female
fem PT	female pipe thread
fl	flare
flat pt	flat point
ft	feet or foot
ga	gauge
gal	gallon or gallons
gpm	gallons per minute
gr	grade
hd	head
hdg pt	half dog point
hp	horsepower
ID	inside diameter
in	inch or inches
Incl.	Includes
inv fl	inverted flare
K	kilo
kg	kilogram
km/h	kilometers per hour

L	litre
lb	pounds
lb-ft	pound-foot
lg	long
LH	left-hand
LH thd	left-hand thread
M	(prefix) metric thread size
m	metre
ml	milliliter
mm	millimetre
NF	National Fine
No.	number
NPT	National Pipe Thread
NS	National Super Fine
OD	outside diameter
ohm	electrical unit of resistance
Or	O-ring
ORB	O-ring boss
ORFS	O-ring face seal
ov cntr	over center
ov pt	oval point
oz	ounce
P	pitch
psi	pounds per square inch
pt	pint
PT	pipe thread
rd	round
rd holes	round holes
RH	right-hand
RH thd	right-hand thread
rpm	revolutions per minute
sl	self-locking
sq	square
SST	Stainless Steel
st	self-tapping
strk	stroke
sw	swivel
T	teeth
thk	thick
tpr	taper
tube OD	tube outside diameter
V	volt or volts
W	watt or watts
X	as required
yd	yard

SECTION INDEX

02-01	RADIATOR - COOLANT RECOVERY SYSTEM
02-02	FAN - FAN BELT
02-03	EXHAUST SYSTEM
02-04	ENGINE - AIR CLEANER
02-05	GRID HEATER
02-06	ENGINE - MOUNTING
02-06A	OIL FILL, ENGINE
02-07	ENGINE - PUMP DRIVE (WITH SPLIT PUMP CONFIGURATION)
02-07A	ENGINE - PUMP DRIVE (WITH TANDEM PUMP CONFIGURATION)
02-08	ENGINE
02-08A	ENGINE - BLOCK HEATER
02-09	CYLINDER BLOCK
02-10	CYLINDER BLOCK
02-11	OIL PUMP, PAN
02-12	CYLINDER BLOCK - COVERS
02-13	CYLINDER BLOCK - COVERS
02-14	CYLINDER BLOCK - COVERS
02-15	BREATHER - ENGINE
02-16	CYLINDER HEAD
02-17	CYLINDER HEAD - COVERS
02-18	CYLINDER HEAD - VALVE MECHANISM
02-19	MANIFOLD - INTAKE
02-20	MANIFOLD - EXHAUST
02-20A	TURBOCHARGER
02-21	CRANKSHAFT
02-22	PISTONS - CONNECTING ROD
02-23	PISTONS - CONNECTING ROD
02-24	FLYWHEEL - ENGINE
02-25	PULLEY - CRANKSHAFT
02-26	CAMSHAFT
02-27	ENGINE, OIL
02-27A	TURBOCHARGER, PIPES AND CONNECTIONS
02-28	OIL PUMP - ENGINE
02-29	OIL FILTERS - ENGINE
02-30	OIL FILTER AND COOLER
02-31	WATER PUMP
02-32	COOLING SYSTEM - ENGINE
02-33	THERMOSTAT - ENGINE COOLING SYSTEM
02-34	WATER PUMP - CONTROL
02-35	FAN DRIVE
02-36	POWER TAKE OFF
02-37	ENGINE - LIFT HOOK

RADIATOR - COOLANT RECOVERY SYSTEM

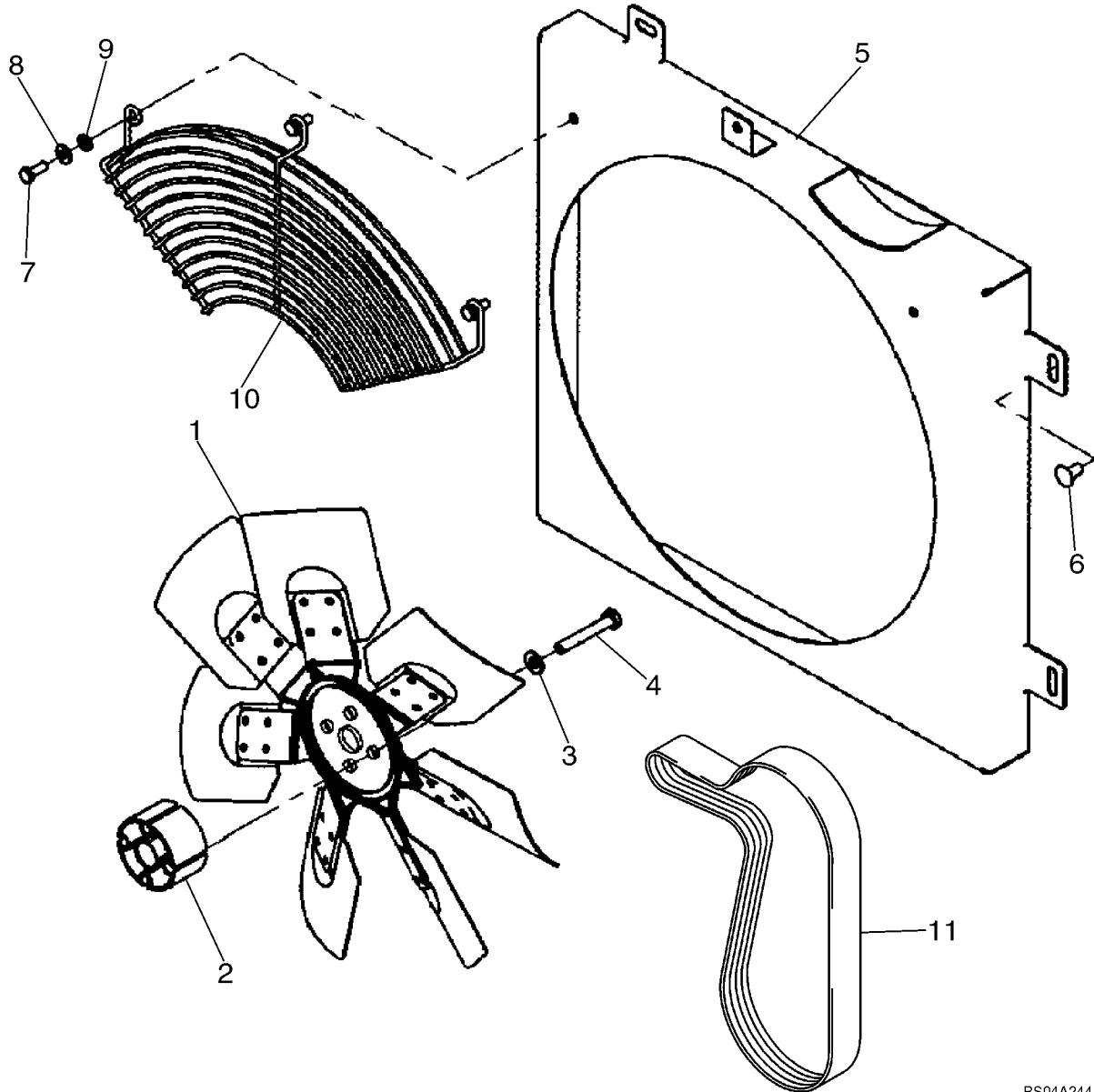


RADIATOR - COOLANT RECOVERY SYSTEM

REF	FN	PART NUMBER	YR/SN	QTY	DESCRIPTION
1		87013856		1	RADIATOR Incl. 1A, 1B
1A		87032485		1	FITTING Drain
1B		87032486		1	CAP, RADIATOR
2		87020980		1	RESERVOIR, COOLANT EXPNSN Incl. Cap 257884A1
		257884A1		1	PLUG
3		87459340		1	FRAME Upper Radiator; Component Parts Not Serviced Separately; Replaces 87024337
4		280638		4	BOLT Short NK, 1/4"-20 x 3/4", G5, Full Thd
5		87017045		4	CUSHION
6		87023941		1	HOSE Coolant Recovery
7		322357		4	WASHER, LOCK Belleville, M6
8		7770		4	NUT 1/4"-20, G5
9		87436062		1	FRAME ASSY Lower Radiator
10		87033635		4	SEAL
11		86050202		3	CLAMP
12		87037868		1	HOSE ASSY. Lower Radiator
13		86625031		1	CLAMP
14		87040170		1	HOSE ASSY. Upper Radiator
15		216698		2	PIN, SPLIT (COTTER)
16		895-11010		2	WASHER M10 x 20 x 2

465

FAN - FAN BELT

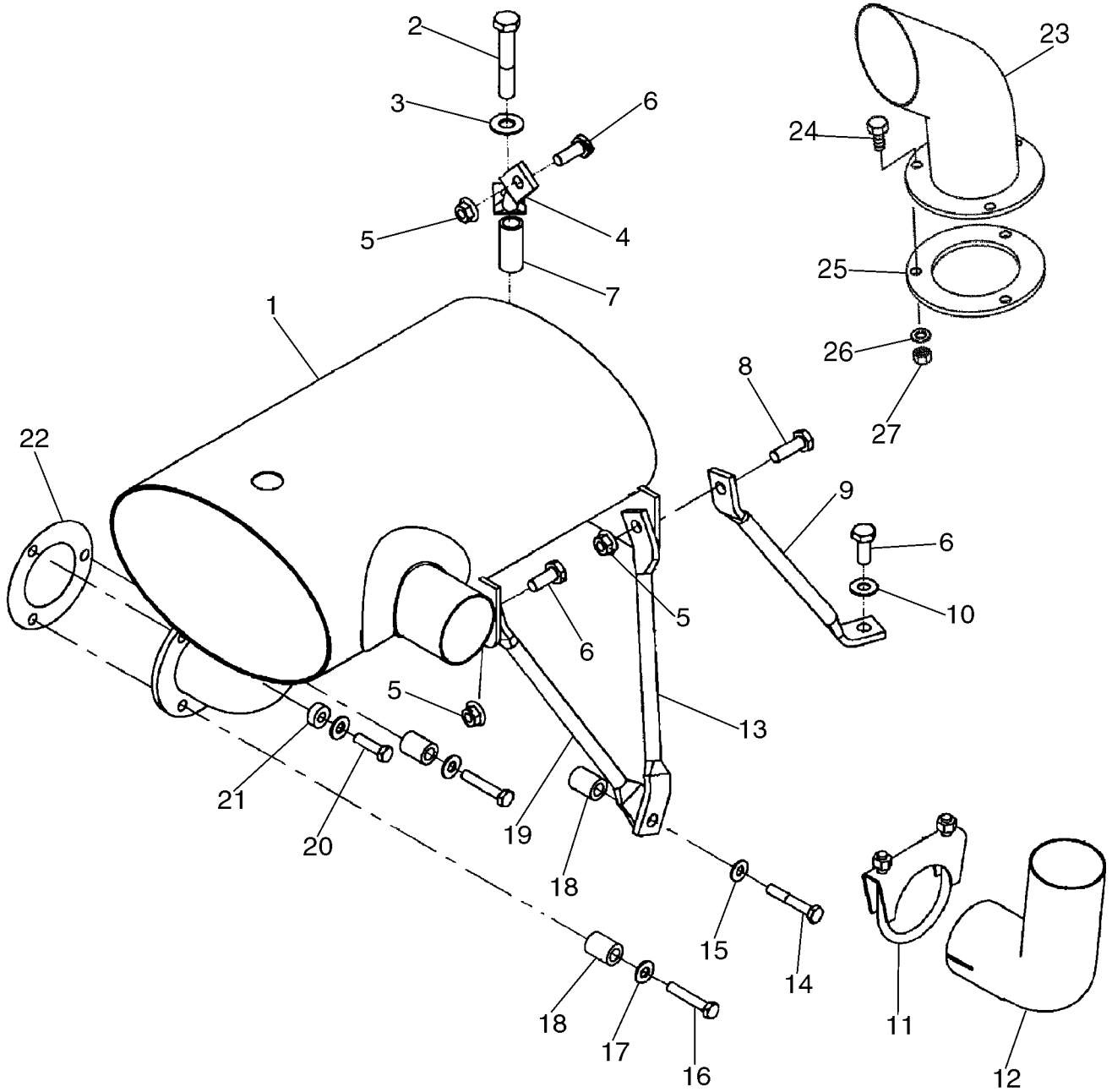


FAN - FAN BELT

REF	FN	PART NUMBER	YR/SN	QTY	DESCRIPTION
1		87025470		1	FAN 480 mm; If Used
1		238344A1		1	FAN 518 mm; If Used
2		A184545		1	SPACER
3		140045		4	WASHER, LOCK
4		814-10070		4	BOLT Hex, M10 x 70, 8.8
5		87046890		1	SHROUD ASSY. Used With 480 mm Fan; If Used
5		87461514		1	SHROUD ASSY. Used With 518 mm Fan; If Used
6		434-612		4	BOLT, CARRIAGE Short NK, 3/8"-16 x 3/4", G5, Full Thd
7		120104		3	SCREW Hex, M8 x 20, 8.8
8		322358		3	WASHER, LOCK Belleville, M8
9		86624184		3	WASHER M8 x 16 x 1.6
10		87046887		1	GUARD Fan
11		86982450		1	V-BELT Fan Belt

	465
--	------------

EXHAUST SYSTEM

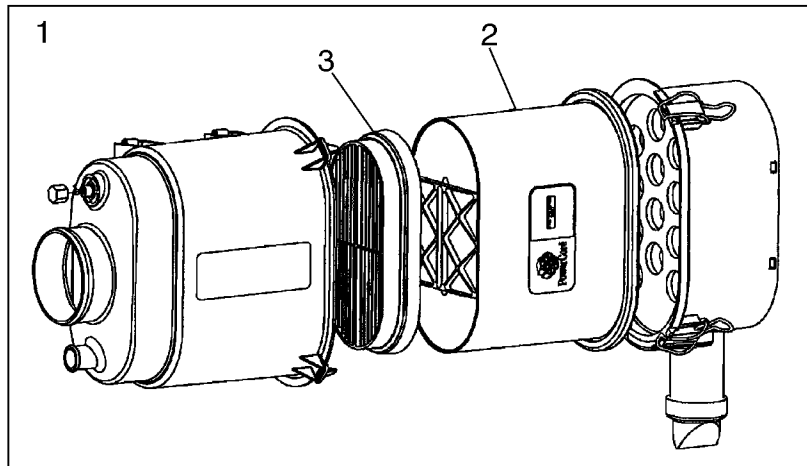
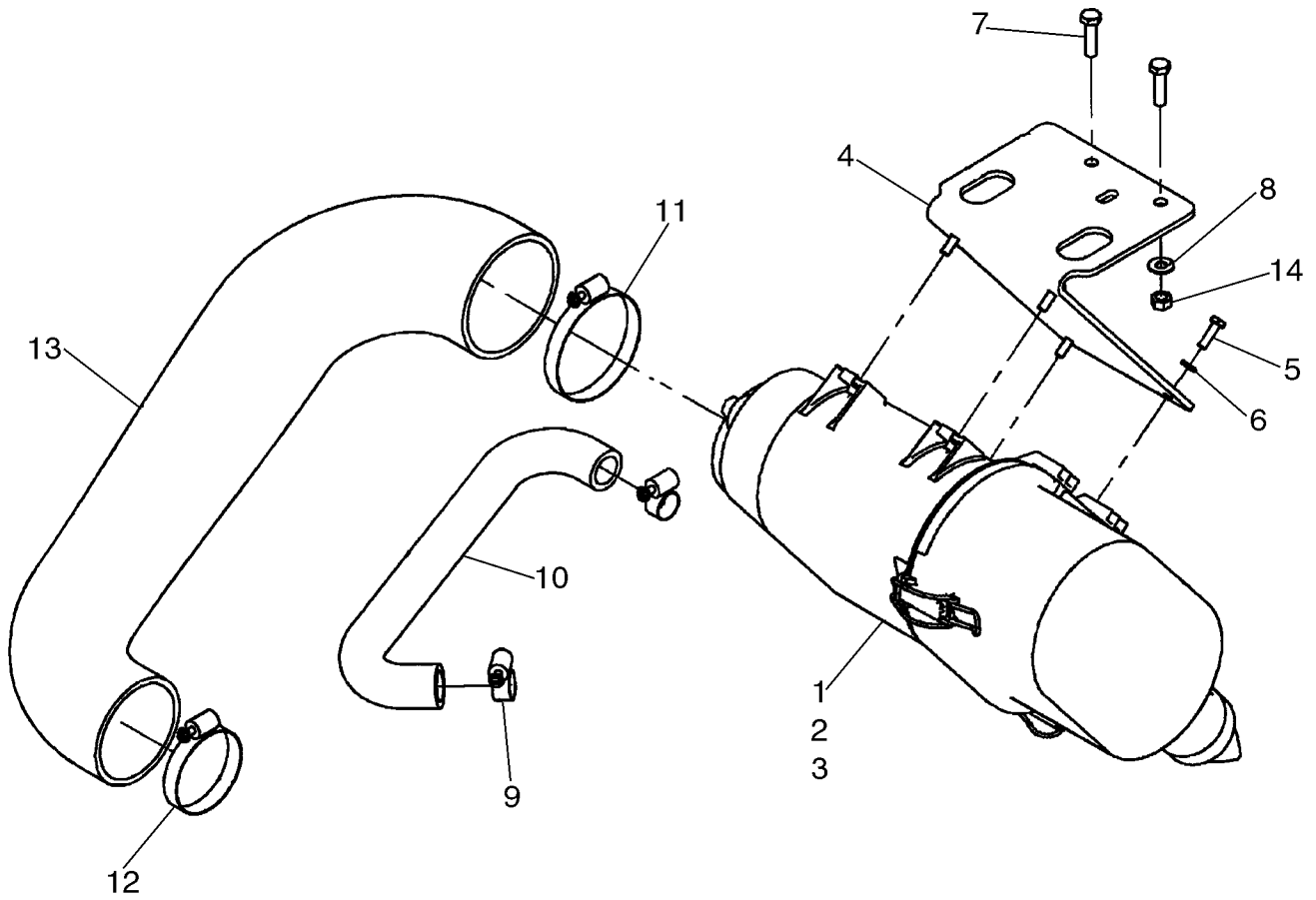


EXHAUST SYSTEM

REF	FN	PART NUMBER	YR/SN	QTY	DESCRIPTION
1		87035578		1	MUFFLER Assy
2		9706717		1	SCREW Hex, M12 x 70, 8.8, Full Thd
3		140046		1	WASHER, LOCK Belleville, M12
4		87034631		1	ROD Muffler Support
5		411345A1		3	NUT M10
6		43139		3	SCREW Hex, M10 x 25, 8.8, Full Thd
7		86608204		1	SPACER
8		43130		1	SCREW Hex, M8 x 50, 8.8
9		87034630		1	ROD Muffler Support
10		140045		1	WASHER, LOCK
11		A13240		1	CLAMP Muffler
11		87461995		1	CLAMP Muffler; Replaces A13240
12		87040074		1	TUBE Tail Pipe
13		87033361		1	ROD Muffler Support
14		43130		1	SCREW Hex, M8 x 50, 8.8
15		322358		4	WASHER, LOCK Belleville, M8
16		814-8045		2	BOLT Hex, M8 x 45, 8.8
17		86625263		3	WASHER M8 x 20 x 1.6
18		256690A1		3	SPACER
19		87029961		1	ROD Muffler Support
20		614-8030		1	BOLT Hex, M8 x 30, 8.8
21		86633393		1	SPACER Hose Clamp
22		86606073		1	GASKET
23		304811A1		1	TUBE Exhaust Extension
24		43127		3	BOLT Hex, M8 x 25, 8.8
25		247026A1		1	PLATE, LARGE Exhaust Doubler
26		832-41408		3	NUT M8 x 1.25", CI 8
27		895-15008		8	WASHER M8 x 20 x 1.6

465

ENGINE - AIR CLEANER

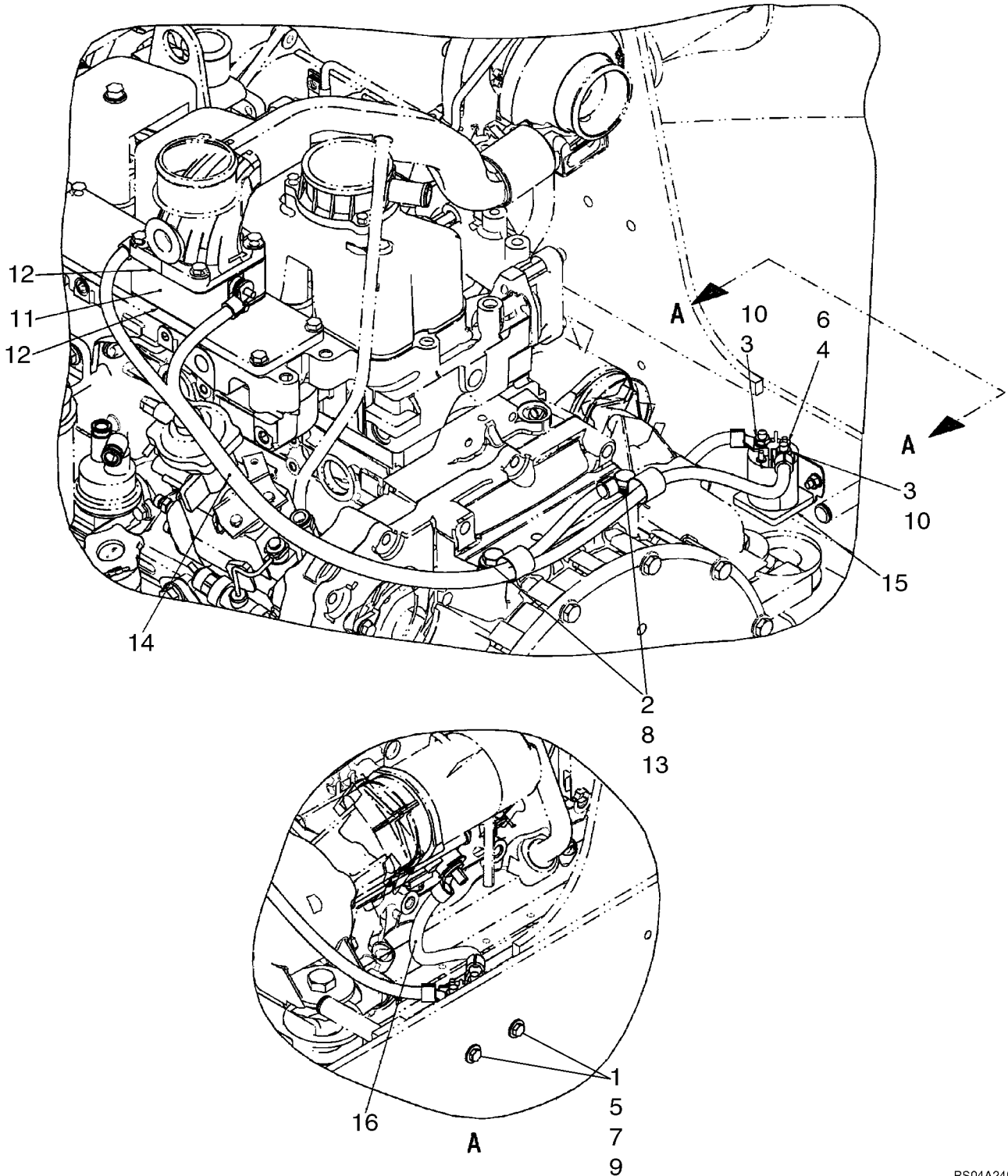


ENGINE - AIR CLEANER

REF	FN	PART NUMBER	YR/SN	QTY	DESCRIPTION
1		87036648		1	FILTER, AIR Incl. 2, 3
2		87037984		1	ELEMENT Powercore
3		87037985		1	ELEMENT
4		87046722		1	BRACKET
5		120100		4	BOLT Hex, M6 x 20, 8.8
6		9824259		4	WASHER M6 x 12 x 1.6
8		322358		3	WASHER, LOCK Belleville, M8
7		614-8030		4	BOLT Hex, M8 x 30, 8.8
8		322358		3	WASHER, LOCK Belleville, M8
9		214-1416		2	CLAMP Type F #16
10		87046614		1	HOSE
10		87352019		1	HOSE Replaces 87046614
11		214-1460		1	CLAMP Type F #60
12		214-1448		1	CLAMP Type F #48
13		87046613		1	HOSE Air Cleaner
13		87352003		1	HOSE Air Cleaner; Replaces 87046613
14		825-1408		2	NUT M8, CI 8

	465
--	------------

GRID HEATER

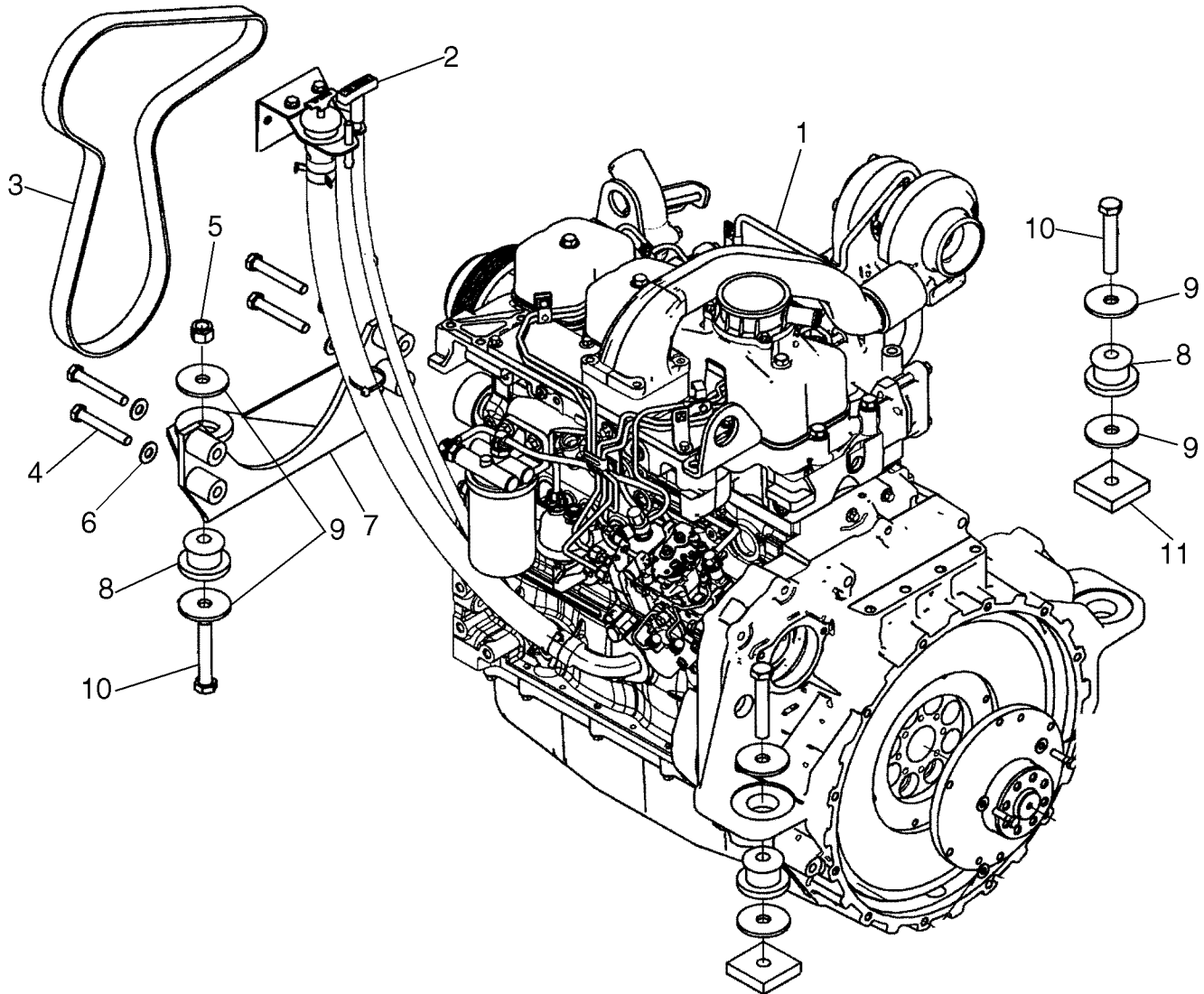


GRID HEATER

REF	FN	PART NUMBER	YR/SN	QTY	DESCRIPTION
1		7770		2	NUT 1/4
2		43151		2	SCREW M12 x 20
3		80681		2	WASHER, LOCK 5/16"
4		80684		1	WASHER, LOCK #10
5		80701		2	WASHER 1/4
6		87825		1	NUT No. 10
7		88146		2	BOLT 1/4 x 1
8		140046		2	WASHER, LOCK M12
9		322357		2	WASHER, LOCK Belleville, M6
10		9626568		2	NUT 5/16
11		82017872		1	HEATER Grid
12		86014151		2	GASKET
13		86625038		2	CLAMP 25.4 mm
14		87030820		1	CABLE Grid Heater
15		87406968		1	SWITCH, SOLENOID
16		87047862		1	CABLE Grid Heater
		L18331		1	STRAP

	465
--	------------

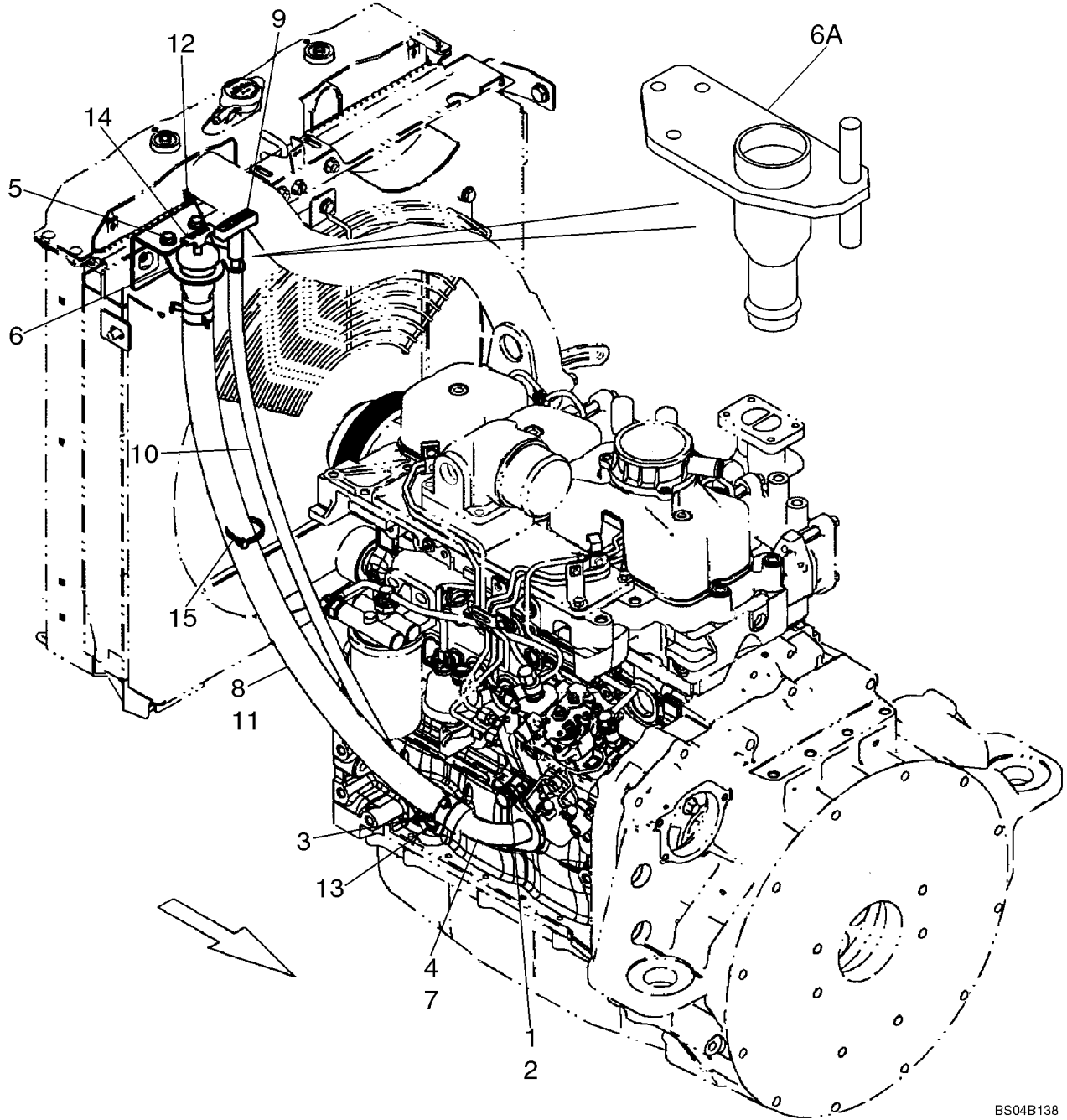
ENGINE - MOUNTING



ENGINE - MOUNTING

REF	FN	PART NUMBER	YR/SN	QTY	DESCRIPTION
1		87039487		1	ENGINE Engine Assy
2		REF		1	INSTRUCTION Remote Oil Fill; See Figure 02-06A
3		86982450		1	V-BELT
4		412085		4	SCREW Hex, M12 x 80, 10.9
5		412066		1	NUT, LOCK M16 x 2, CI 8
6		140046		4	WASHER, LOCK Belleville, M12
7		87041763		1	MOUNT, ENGINE
8		A140221		3	MOUNTING PARTS
9		87032338		6	WASHER, LOCK .656 x 2 x .188 in
10		350616		3	SCREW Hex, M16 x 90, 8.8
11		390350A1		2	PLATE

OIL FILL, ENGINE

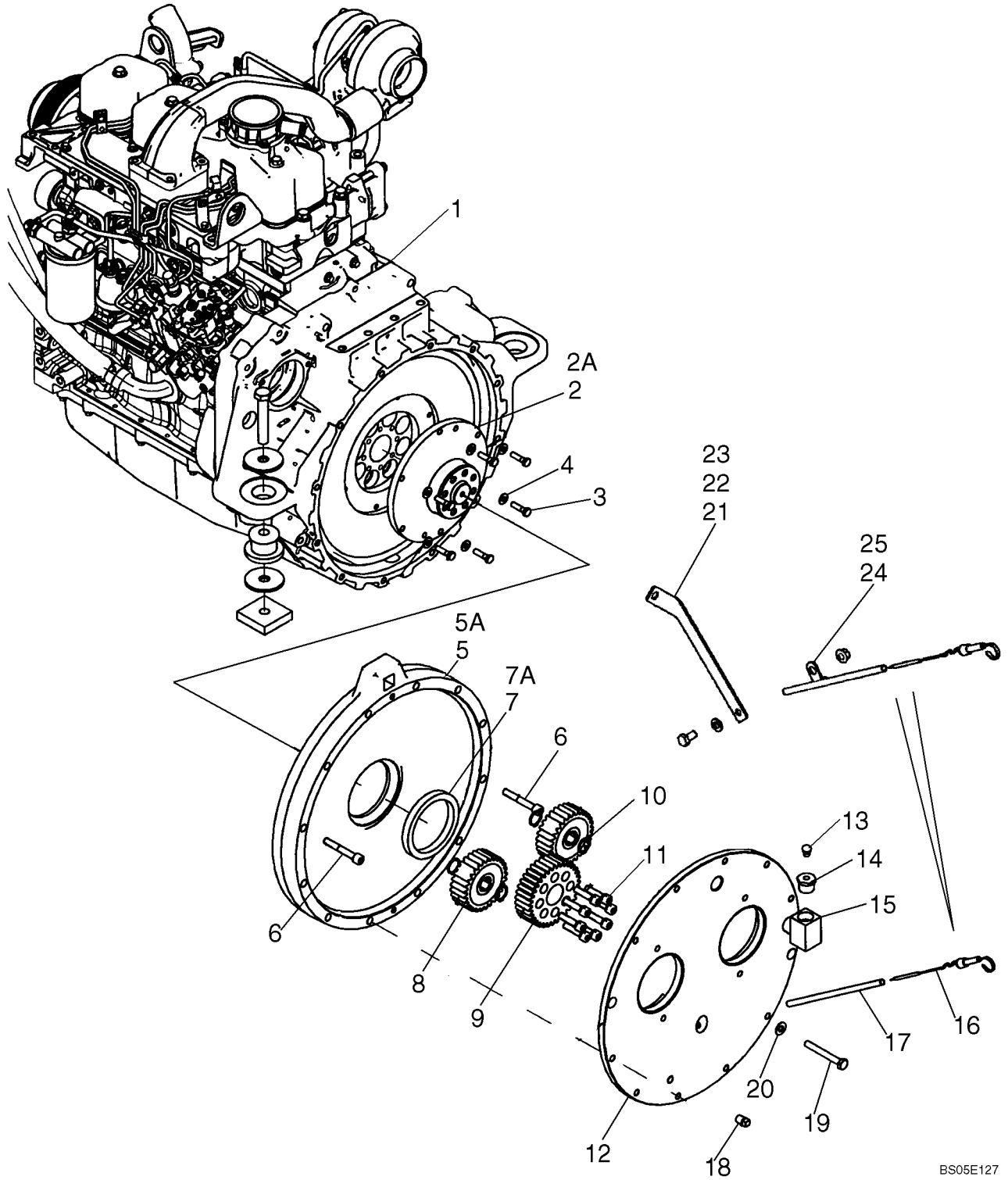


OIL FILL, ENGINE

REF	FN	PART NUMBER	YR/SN	QTY	DESCRIPTION
1		614-12025		2	BOLT M12 x 25
2		892-11012		2	WASHER, LOCK 12 mm
3		214-1704		1	CLAMP Type M #4
4		14458781		1	O-RING 1-9/16 x 1-3/4
5		281-54810		2	SCREW 5/16-18 x 5/8
6		87050090		1	TUBE ASSY. Oil Fill; If Used
6A		87458899		1	SUPPORT Oil Fill; If Used
7		87432267		1	TUBE Oil Fill
8		87432275		2	SPRING 35 mm
9		87434315		1	DIPSTICK
10		87434316		1	HOSE ASSY. Oil Fill
11		87434317		1	HOSE ASSY. Oil Fill
12		87434847		1	ANGLE Oil Fill Mounting
13		87438418		1	TUBE Oil Guage
14		87445427		1	CAP, FILLER
15		L18331		1	STRAP

465

ENGINE - PUMP DRIVE (WITH SPLIT PUMP CONFIGURATION)



ENGINE - PUMP DRIVE (WITH SPLIT PUMP CONFIGURATION)

REF	FN	PART NUMBER	YR/SN	QTY	DESCRIPTION
		REF			INSTRUCTION MODELS WITH SPLIT PUMP CONFIGURATION
1		87039487		1	ENGINE
2		87049924		1	SPACER Used With Ref 5, 7
2A		87462294		1	SPACER Used With Ref 5A, 7A
3		43235		6	BOLT Hex, M8 x 30, 10.9
4		322358		6	WASHER, LOCK Belleville, M8
5		87053351		1	BOX Splitter; Used With Ref 2, 7
5A		87462295		1	BOX Splitter; Used With Ref 2A, 7A
6		863-10070		2	SCREW Hex Soc Hd, M10 x 70, 12.9
7		9790499		1	SEAL PROTECTION Used With Ref 2, 5
7A		87462383		1	SEAL Used With Ref 2A, 5A
8		9701486		2	GEAR 29T
9		87051053		1	GEAR Pump Drive
10		271877		4	RING, SNAP #93, Ext
11		864-10040		8	SCREW Hex Soc Hd, M10 x 40, 8.8
12		87053352		1	CAP Splitter Box
13		46566		1	BREATHER Air Vent
14		88873		1	BUSHING 3/4 To 1/8
15		217-1020		1	FITTING 3/4 NPTF Male x 3/4 NPTF Female
16		9635238		1	INDICATOR Oil; If Used
17		86606076		1	TUBE Dipstick; If Used
18		217-504		1	PLUG 1/4
19		814-10080		10	BOLT Hex, M10 x 80, 8.8
20		140045		10	WASHER, LOCK
21		87462692		1	BRACKET Oil Dipstick Bracket; If Used
22		43138		1	SCREW Hex, M10 x 20, 8.8, Full Thd
23		140017		1	WASHER, LOCK M10 x 20 x 2
24		515-2595		1	CLAMP 9.5 mm M12 Bolt
25		43435		1	NUT M10, Flg Ser

465



Suggest:

If the above button click is invalid.

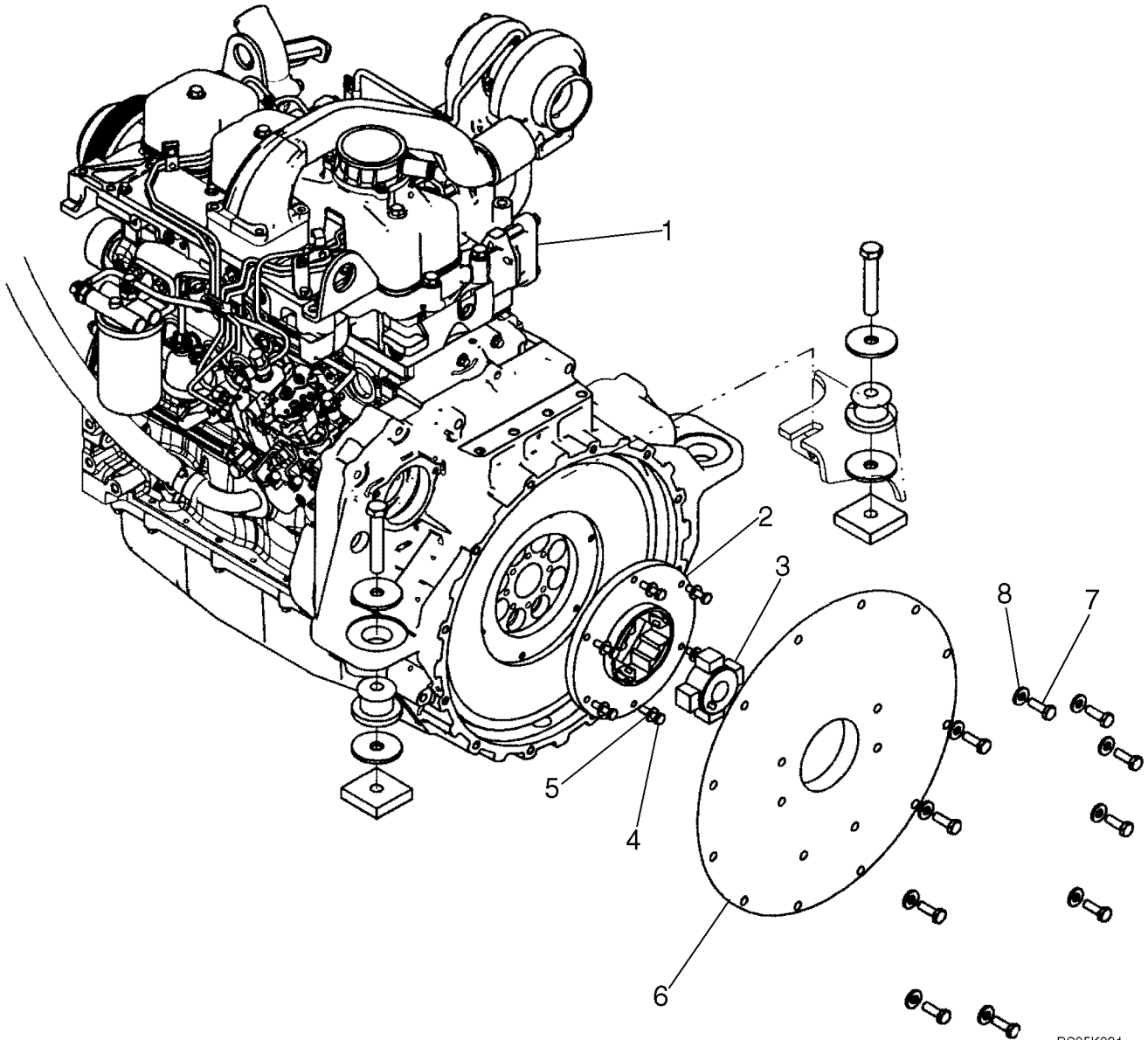
Please download this document

first, and then click the above link

to download the complete manual.

Thank you so much for reading

ENGINE - PUMP DRIVE (WITH TANDEM PUMP CONFIGURATION)



<https://www.ebooklibonline.com>

Hello dear friend!

Thank you very much for reading.

Enter the link into your browser.

The full manual is available for immediate download.

<https://www.ebooklibonline.com>