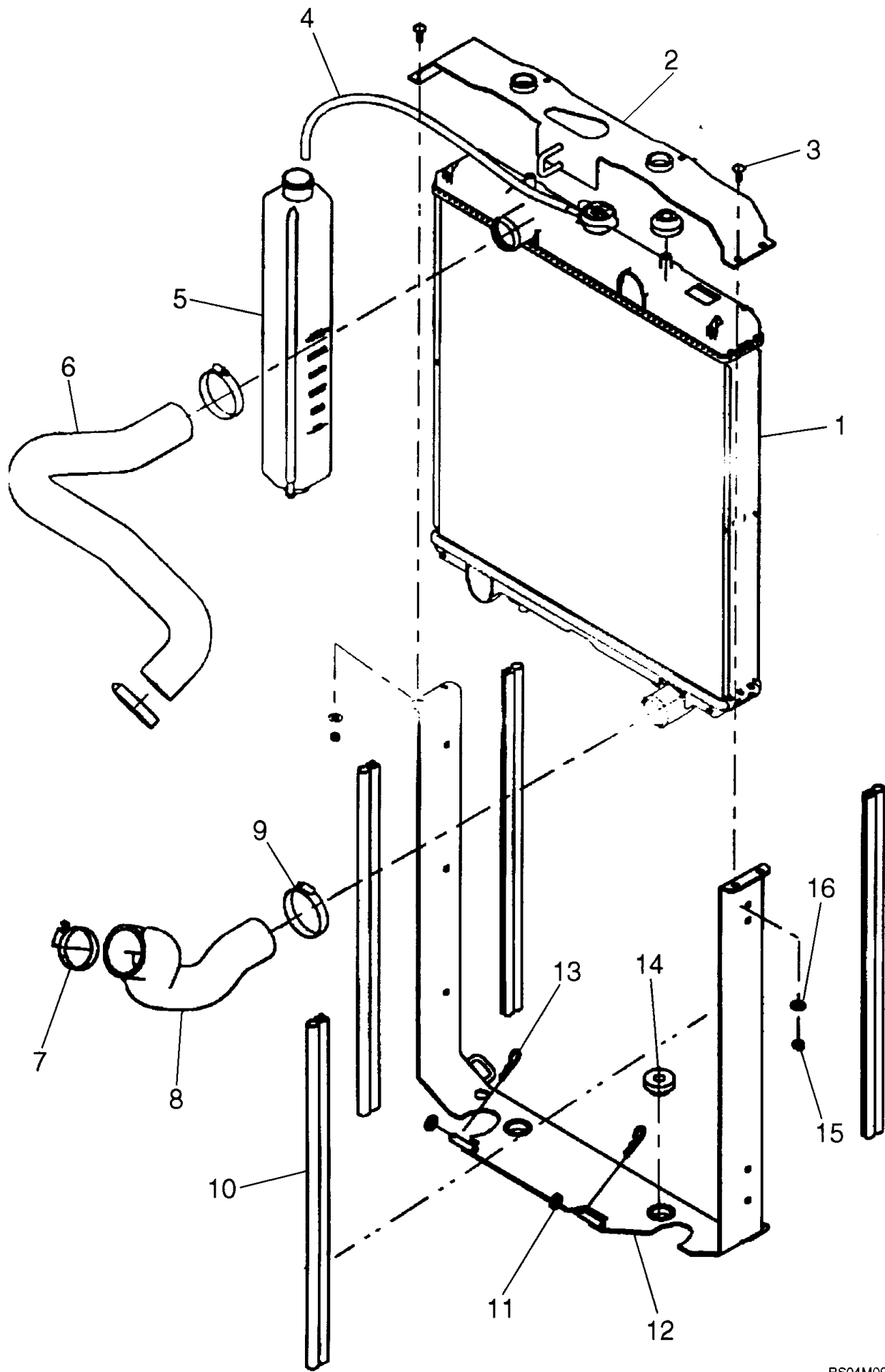




PARTS CATALOGUE

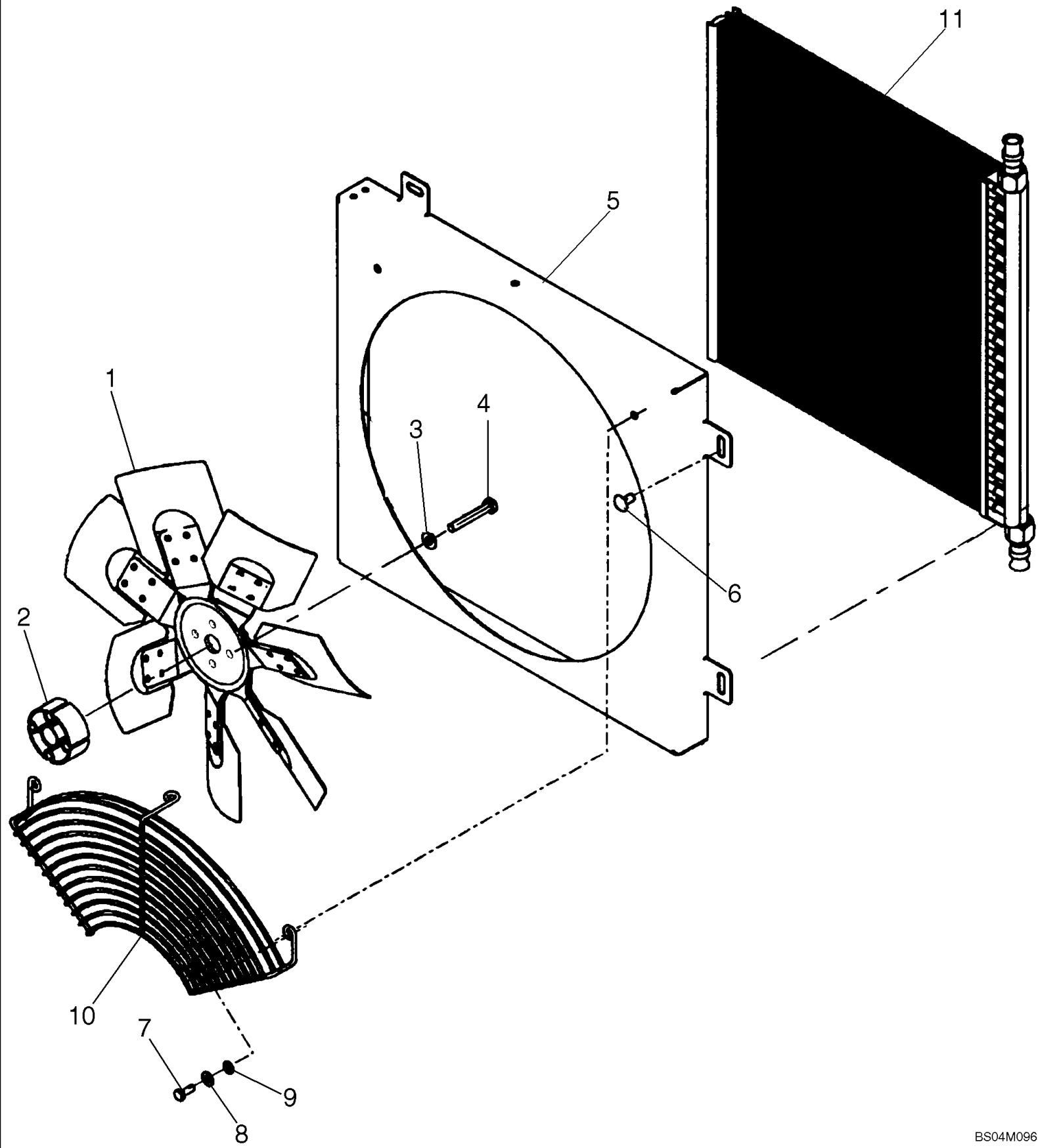
430
CASE SKID STEER LOADER

02-01 RADIATOR - COOLANT RECOVERY SYSTEM



02-01 RADIATOR - COOLANT RECOVERY SYSTEM

Ref	Part Number	Qty	Description
1	87013856	1	RADIATOR, Incl. 1A, 1B
1A	87032485	1	FITTING, Drain
1B	87032486	1	CAP, RADIATOR,
2	87459340	1	FRAME, Upper Radiator; Component Parts Not Serviced Separately
3	280638	4	BOLT, CARRIAGE, Short NK, 1/4"-20 x 3/4", G5, Full Thd,
4	87023365	1	HOSE, Coolant Recovery
5	87020980	1	RESERVOIR, COOLANT EXPNSN, Incl. Cap 257884A1
	257884A1	1	PLUG,
6	87040170	1	HOSE ASSY., Upper Radiator
7	45014	1	CLAMP, #40, 2.06/3.00 Type F Worm, Type F #40
8	87040171	1	HOSE, Lower Radiator
9	86050202	3	CLAMP, #32, 1.56/2.50 Type F Worm,
10	87033635	4	SEAL,
11	86624176	2	WASHER, M10 x 20 x 2, M10 x 20 x 2
12	87050449	1	FRAME ASSY, Lower Radiator
13	216698	2	PIN, SPLIT (COTTER),
14	87017045	4	CUSHION,
15	7770	4	NUT, 1/4"-20, G5,
15	322358	4	WASHER, SPRING, Belleville, M8,



<https://www.ebooklibonline.com>

Hello dear friend!

Thank you very much for reading.

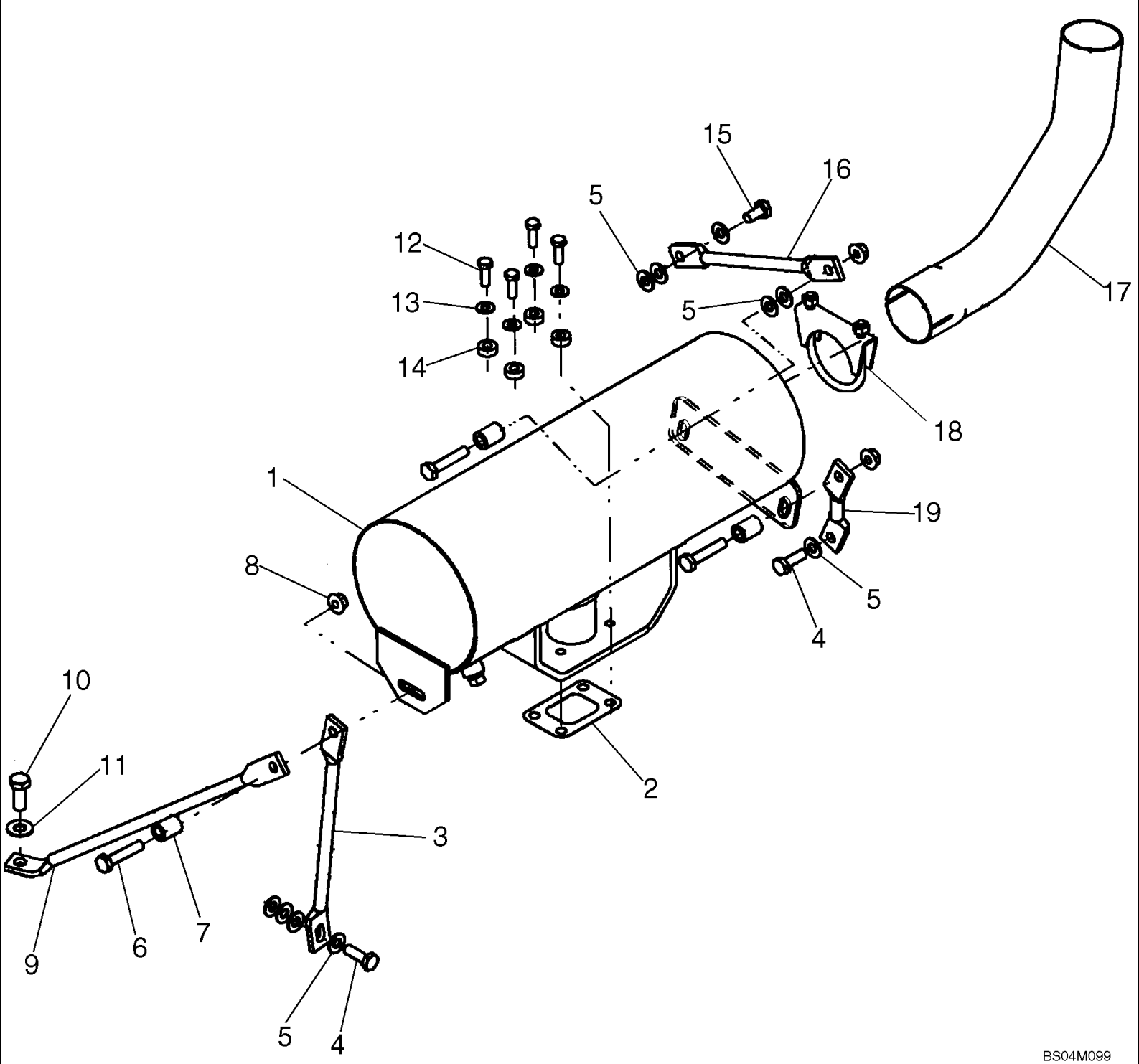
Enter the link into your browser.

The full manual is available for immediate download.

<https://www.ebooklibonline.com>

02-02 FAN MOUNTING

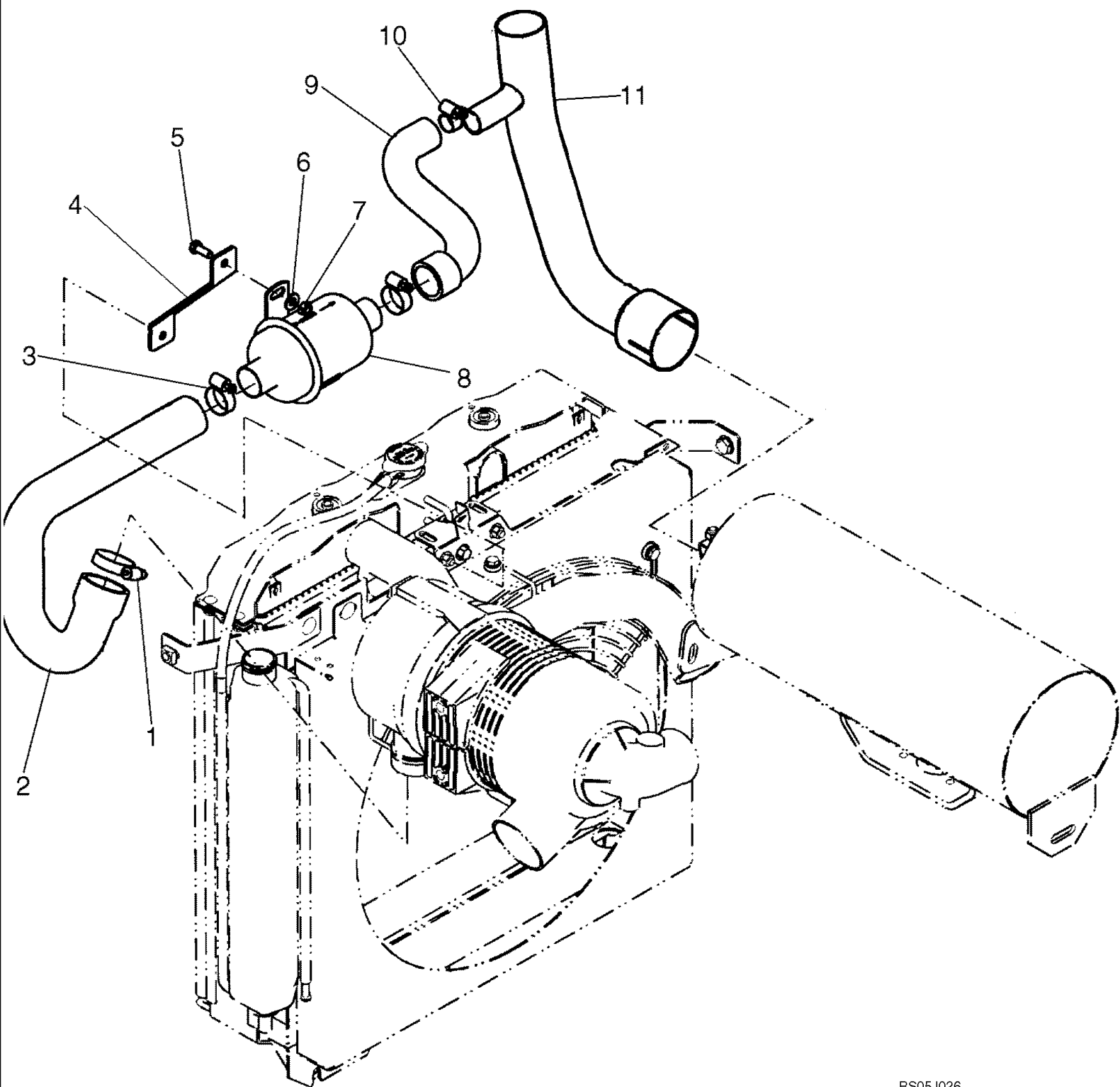
Ref	Part Number	Qty	Description
1	87025470	1	FAN, 480 mm
2	A189252	1	SPACER, Fan
3	140045	4	WASHER, SPRING, Belleville, M10,
4	120071	4	SCREW, Hex, M10 x 65, 8.8,
5	87046889	1	SHROUD ASSY.,
6	86508748	4	BOLT, CARRIAGE, Short NK, 3/8"-16 x 3/4", G5, Full Thd, If Used
6	80280503	4	BOLT, CARRIAGE, Short NK, 3/8"-16 x 1", G5, Full Thd, Short NK, 3/8"-16 x 1", G5, Full Thd; If Used
7	120104	3	SCREW, Hex, M8 x 20, 8.8,
8	322358	3	WASHER, SPRING, Belleville, M8,
9	86624184	3	WASHER, M8 x 16 x 1.6, M8 x 16 x 1.6
10	87046887	1	GUARD, Fan
11	REF	1	INSTRUCTION, See Figure 06-01, Oil Cooler



430 SKID STEER (2/05-)

02-03 EXHAUST SYSTEM

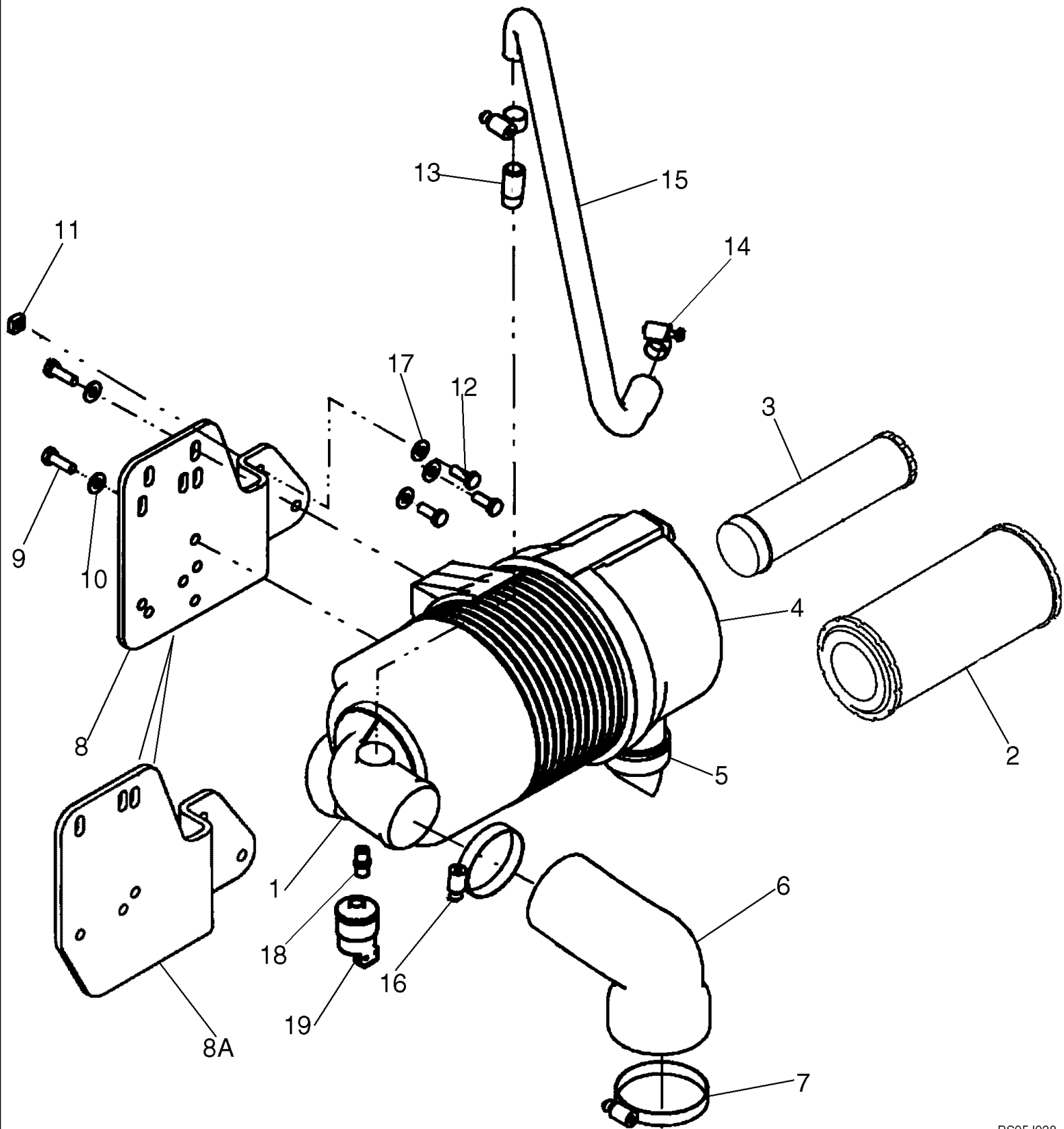
Ref	Part Number	Qty	Description
1	87040452	1	MUFFLER,
2	87021302	1	GASKET, Muffler
3	87043605	1	ROD, Muffler Support
4	43140	2	BOLT, Hex, M10 x 30, 8.8,
5	140045	10	WASHER, SPRING, Belleville, M10,
6	43249	3	SCREW, Hex, M10 x 50, 10.9, Hex, M10 x 50, 10.9
7	256690A1	3	SPACER,
8	411345A1	3	NUT, M10
9	87040817	1	ROD, Muffler Support
10	9706687	1	SCREW, Hex, M12 x 30, 8.8,
11	140046	1	WASHER, SPRING, Belleville, M12,
12	43127	6	BOLT, Hex, M8 x 25, 8.8,
13	322358	9	WASHER, SPRING, Belleville, M8,
14	86633393	4	SPACER,
15	43138	1	SCREW, Hex, M10 x 20, 8.8, Full Thd,
16	87040820	1	ROD, Muffler Support
17	87041462	1	TUBE, Exhaust Tube
17	87461608	1	TUBE, Exhaust Tube; Replaces 87041462
18	A13240	1	CLAMP,
18	87461995	1	CLAMP, Replaces A13240
19	87046105	1	ROD, Muffler Support



430 SKID STEER (2/05-)

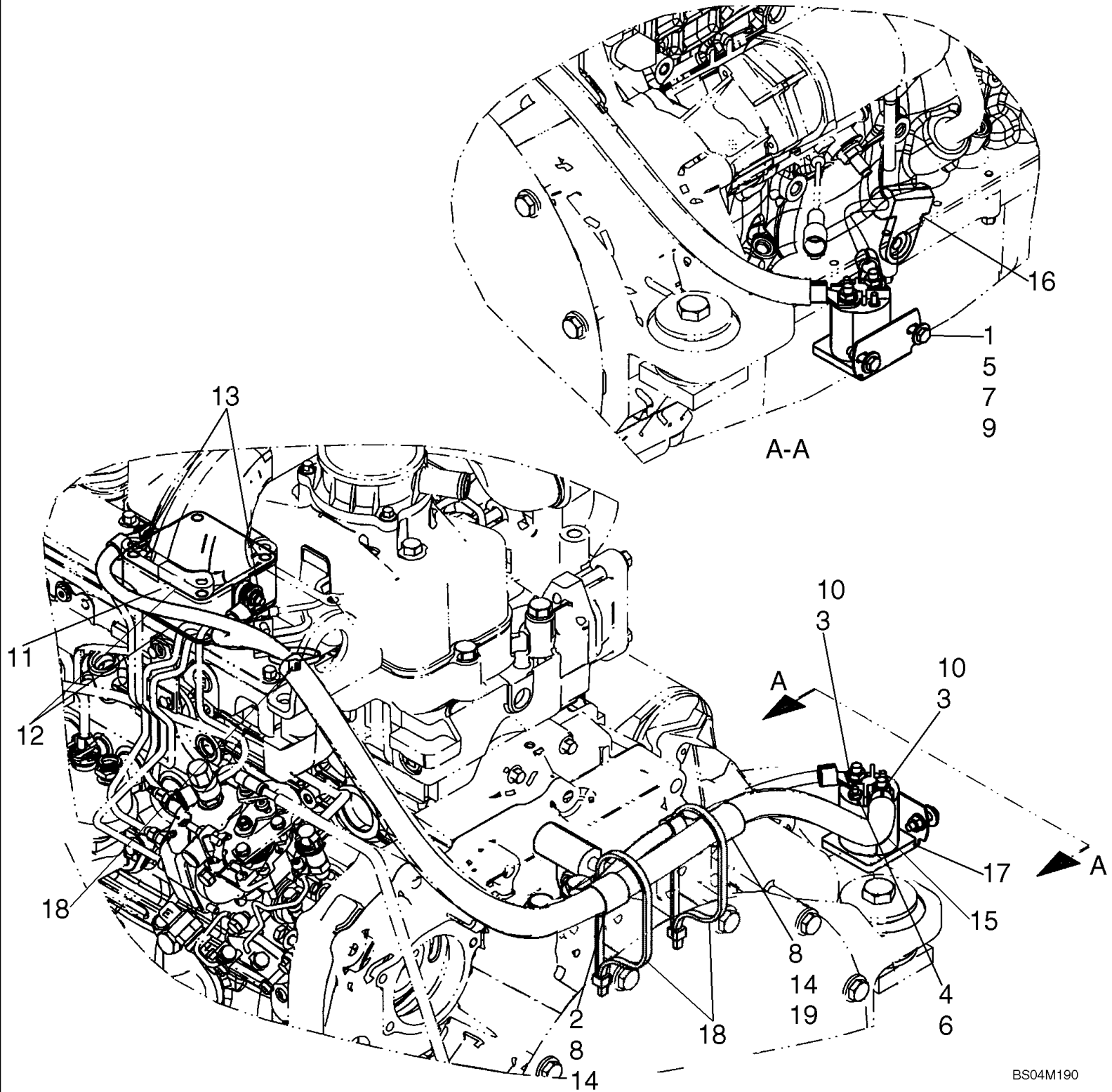
02-03A EXHAUST SYSTEM, ASPIRATOR

Ref	Part Number	Qty	Description
1	87051064	1	HOSE, Intake
2	86624194	1	CLAMP, #36, 1.81/2.75 Type F Worm, Type F, #36
3	84674	2	CLAMP, #28, 1.31/2.25 Type F Worm, Type F, #28
4	87055353	1	BRACKET,
5	120104	1	SCREW, Hex, M8 x 20, 8.8,
6	86625263	1	WASHER, M8 x 20 x 1.6, M8 x 20 x 1.6
7	9628098	1	NUT, LOCK, M8 x 1.25, CI 8, M8 x 1.25", CI 8
8	406089A2	1	VALVE, Aspirator Check
9	87055857	1	HOSE,
10	507586	1	CLAMP, #20, 0.81/1.75 Type F Worm, Type F, #20
11	87461613	1	PIPE, Tail Pipe
11	87052643	1	PIPE, EXHAUST SYSTEM, Tail Pipe; Replaces 87461613



02-04 AIR CLEANER - ENGINE

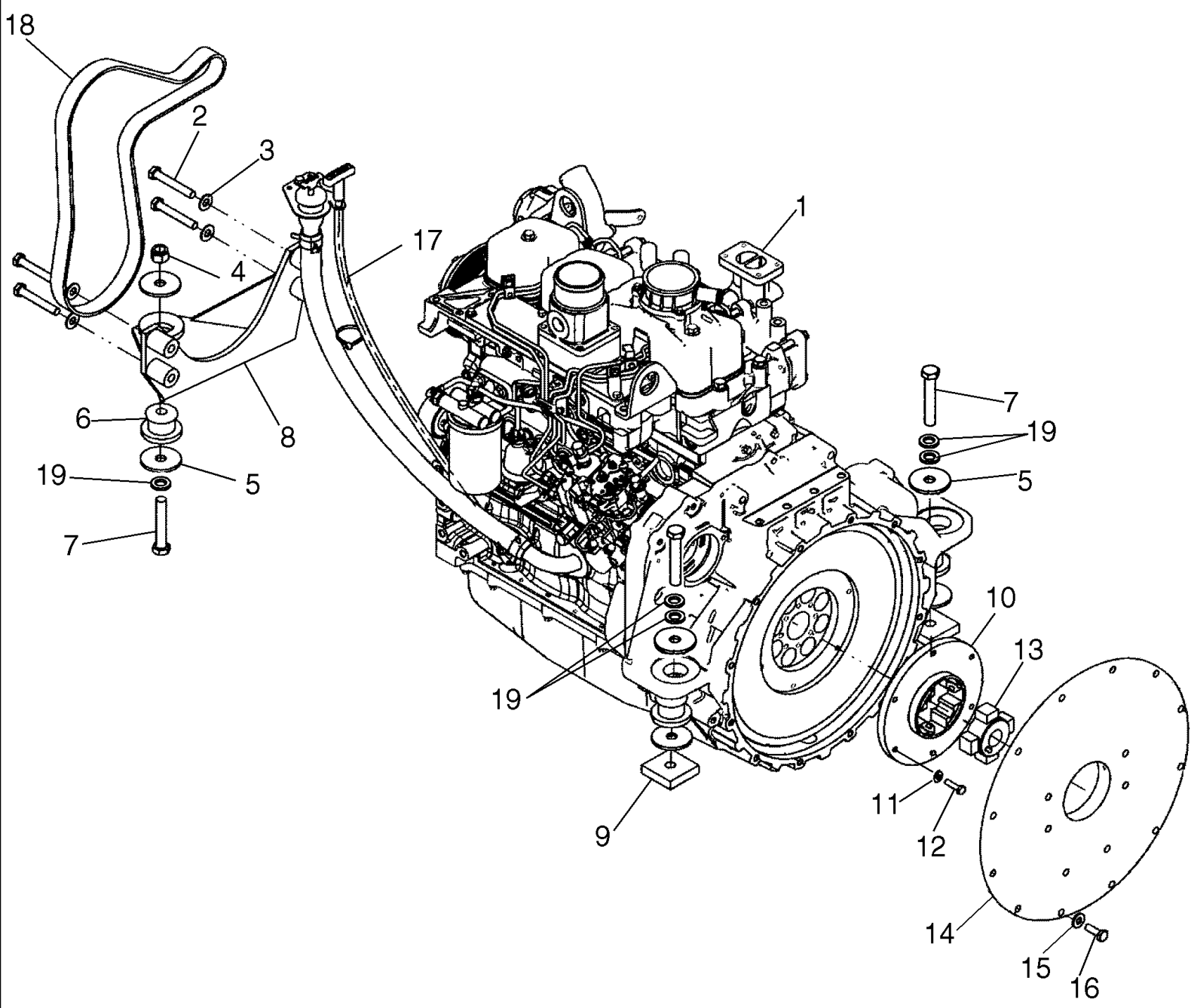
Ref	Part Number	Qty	Description
	87041485	1	CLEANER ASSY., Incl. 1 - 5
1	87041842	1	AIR CLEANER, Body
2	222425A1	1	ELEMENT, Primary
3	222429A1	1	ELEMENT, Secondary
4	440831A1	1	COVER, FILTER, Incl. 4A
4A	86990981	1	TAB, LOCKING, Not Illustrated Separately
5	A184597	1	POPPET, VALVE,
6	87035213	1	HOSE, LARGE, Air Cleaner Outlet
6	87351952	1	HOSE, Air Cleaner Outlet; Replaces 87035213
7	214-1456	1	CLAMP, #56, 3.06/4.00 Type F Worm, Type F #56
8	87022215	1	BRACKET, If Used
8A	87055994	1	BRACKET, If Used
9	43127	6	BOLT, Hex, M8 x 25, 8.8,
10	86625263	6	WASHER, M8 x 20 x 1.6, M8 x 20 x 1.6
11	229197A1	3	NUT,
12	120104	3	SCREW, Hex, M8 x 20, 8.8,
13	L17985	1	FITTING,
14	86625021	2	CLAMP, #12, 0.69/1.25 Type F Worm, Type F #12
15	87035214	1	HOSE, LARGE,
15	87352012	1	HOSE, Replaces 87035214
16	86625032	2	CLAMP, #48, 2.56/3.50 Type F Worm, Type F #48
17	87015284	3	WASHER, M8 x 21.5 x 2.5, HT, M8 x 21.5 x 2.5, HT
18	86976679	1	FITTING, Adapter; Air Cleaner
19	293797A1	1	SWITCH, Air Restriction
19	87013666	1	SWITCH, Air Restriction; Replaces 293797A1



430 SKID STEER (2/05-)

02-05 GRID HEATER

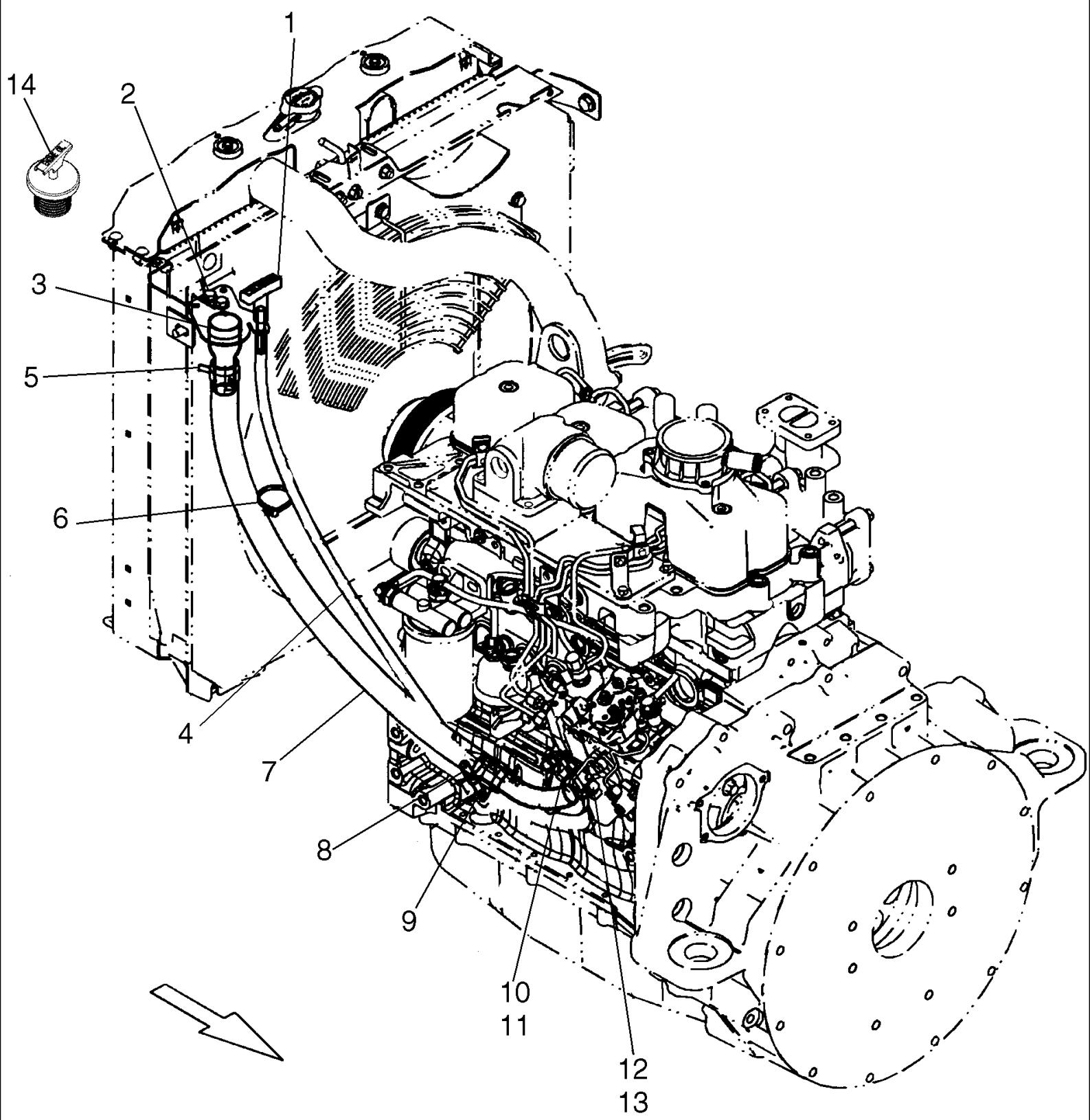
Ref	Part Number	Qty	Description
1	7770	2	NUT, 1/4"-20, G5,
2	43151	2	SCREW, Hex, M12 x 20, 8.8, Full Thd,
3	80681	2	WASHER, LOCK, 5/16",
4	80684	1	WASHER, LOCK, #10,
5	80701	2	WASHER, 1/4",
6	87825	1	NUT, #10-32,
7	88146	2	BOLT, Hex, 1/4"-20 x 1", G5,
8	140046	2	WASHER, SPRING, Belleville, M12,
9	322357	2	WASHER, SPRING, Belleville, M6,
10	9626568	2	NUT, Jam, 5/16"-18, G2,
11	82017872	1	HEATER, Grid
12	86014151	2	GASKET,
13	86511444	2	NUT, M6, Flg Ser,
14	86625038	2	CLAMP, 1", Insul, 1/2" Bolt, 25.4 mm
15	87030820	1	CABLE, Grid Heater
16	87460067	1	CABLE ASSY., Grid Heater
17	87406968	1	SWITCH, SOLENOID,
18	L18331	3	STRAP,
19	9706687	1	SCREW, Hex, M12 x 30, 8.8,
	629086	1	DECAL, Danger, Do Not Use Ether Starting Fluid



430 SKID STEER (2/05-)

02-06 ENGINE - MOUNTING

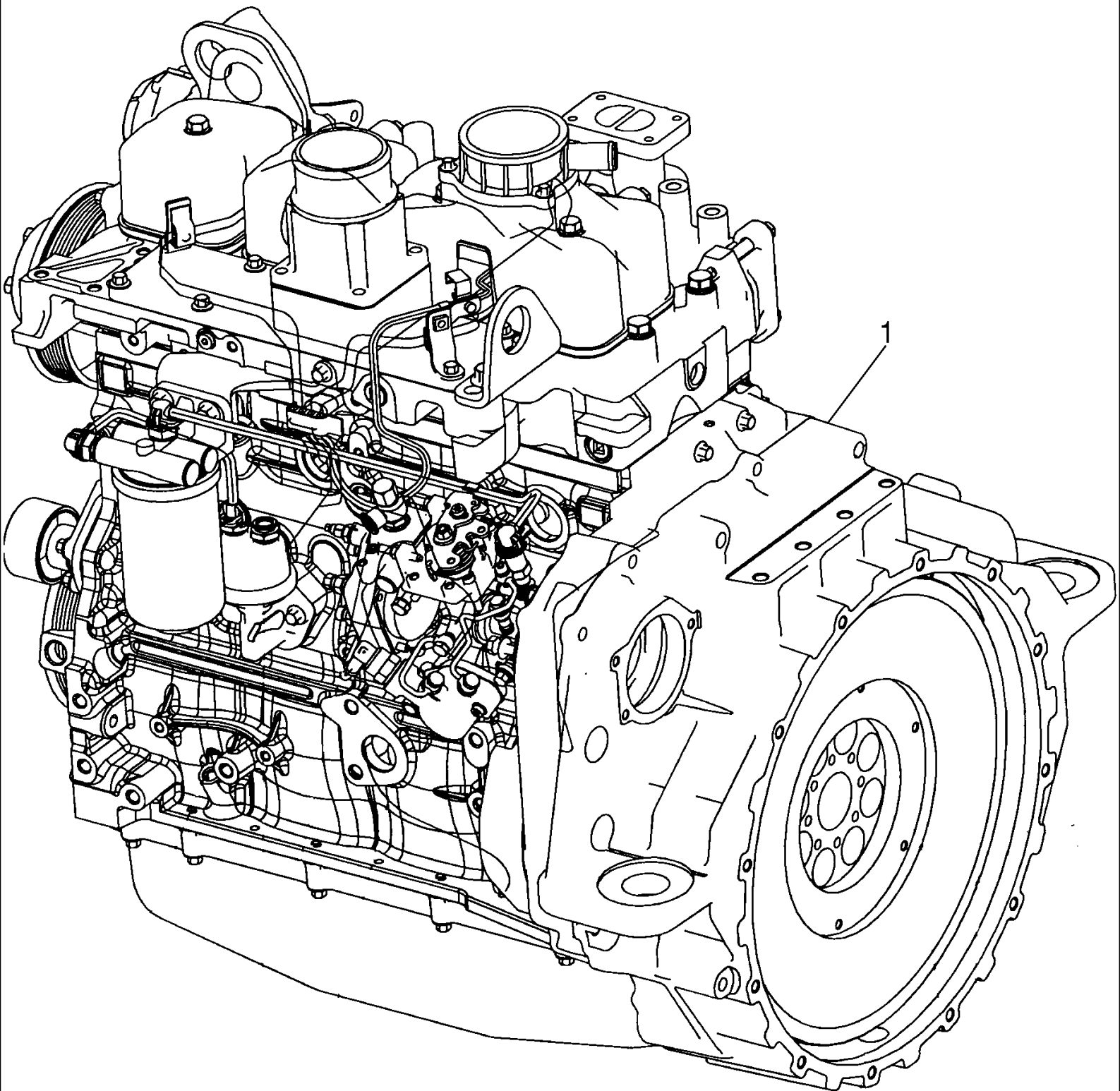
Ref	Part Number	Qty	Description
1	87328613	1	ENGINE, Replaces 87040469
2	412085	4	SCREW, Hex, M12 x 80, 10.9, Hex, M12 x 80, 10.9
3	140046	4	WASHER, SPRING, Belleville, M12,
4	412066	1	NUT, LOCK, M16 x 2, CI 8, M16 x 2, CI 8
5	496-81025	6	WASHER, 21/32" x 2 1/2" x .188", HDN, .656 x 2.50 x .188 in
6	A140221	3	MOUNTING PARTS,
7	814-16090	3	BOLT, Hex, M16 x 90, 8.8,
8	87041763	1	MOUNT, ENGINE, Rear
9	390350A1	2	PLATE,
10	87024539	1	ELEMENT, Pump Drive, 6.5 in
11	322358	6	WASHER, SPRING, Belleville, M8,
12	43235	6	BOLT, Hex, M8 x 30, 10.9, Hex, M8 x 30, 10.9
13	87024588	1	HUB, Pump Drive Star
14	87014858	1	PLATE, MOUNTING, Pump Mounting
15	896-15010	10	WASHER, M10 x 24.5 x 3, HT, M10 x 24.5 x 3, HT
16	43140	10	BOLT, Hex, M10 x 30, 8.8,
17	REF		INSTRUCTION, Dipstick Assy; See Figure 02-07
18	85826230	1	BELT,
19	86625266	5	WASHER, M17.5 x 30 x 4, HT, M16 x 30.5 x 4, HT



430 SKID STEER (2/05-)

02-07 OIL FILL, ENGINE

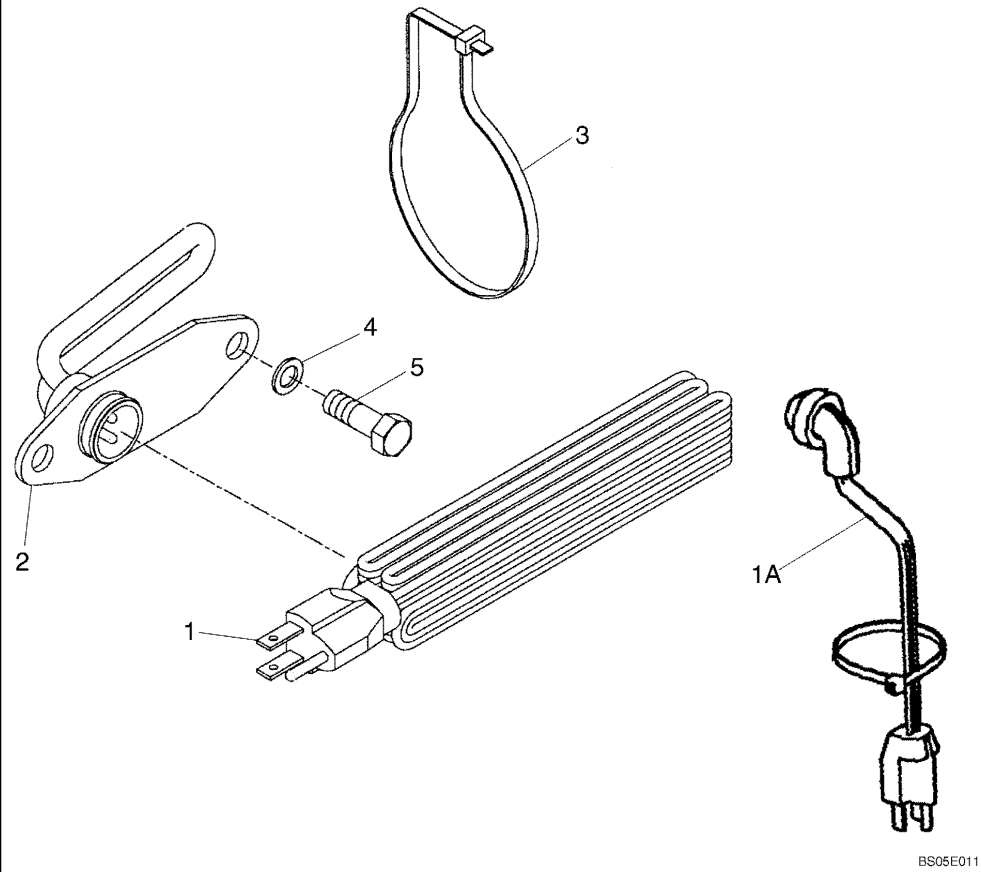
Ref	Part Number	Qty	Description
1	87050094	1	DIPSTICK, If Used
1	87354604	1	DIPSTICK, Dipstick With Ball On End; If Used
2	281-54810	2	SCREW, SELF TAPPING, Hex Wash Hd, 5/16"-18 x 5/8", Hex Wash Hd, 5/16"-18 x 5/8"
3	87050090	1	TUBE ASSY., Oil Fill Tube and Bracket
4	87050093	1	TUBE,
5	87432275	2	SPRING, Clamp, 35 mm
6	L18331	1	STRAP,
7	87050092	1	HOSE,
8	214-1704	1	CLAMP, #4, 0.25/0.62 Type M Worm, #04
9	87438418	1	TUBE, Oil Guage
10	300388	2	SCREW, Hex, M12 x 25, 8.8,
11	412123	2	WASHER, LOCK, M12, M12
12	14458781	1	O-RING, -129, CI 7, 1.549" ID x .103" Thk, -129, CI 7, 1.549" ID x .103" Thk
13	87432267	1	TUBE, Oil Fill
14	87445427	1	CAP, FILLER,



430 SKID STEER (2/05-)

02-08 ENGINE

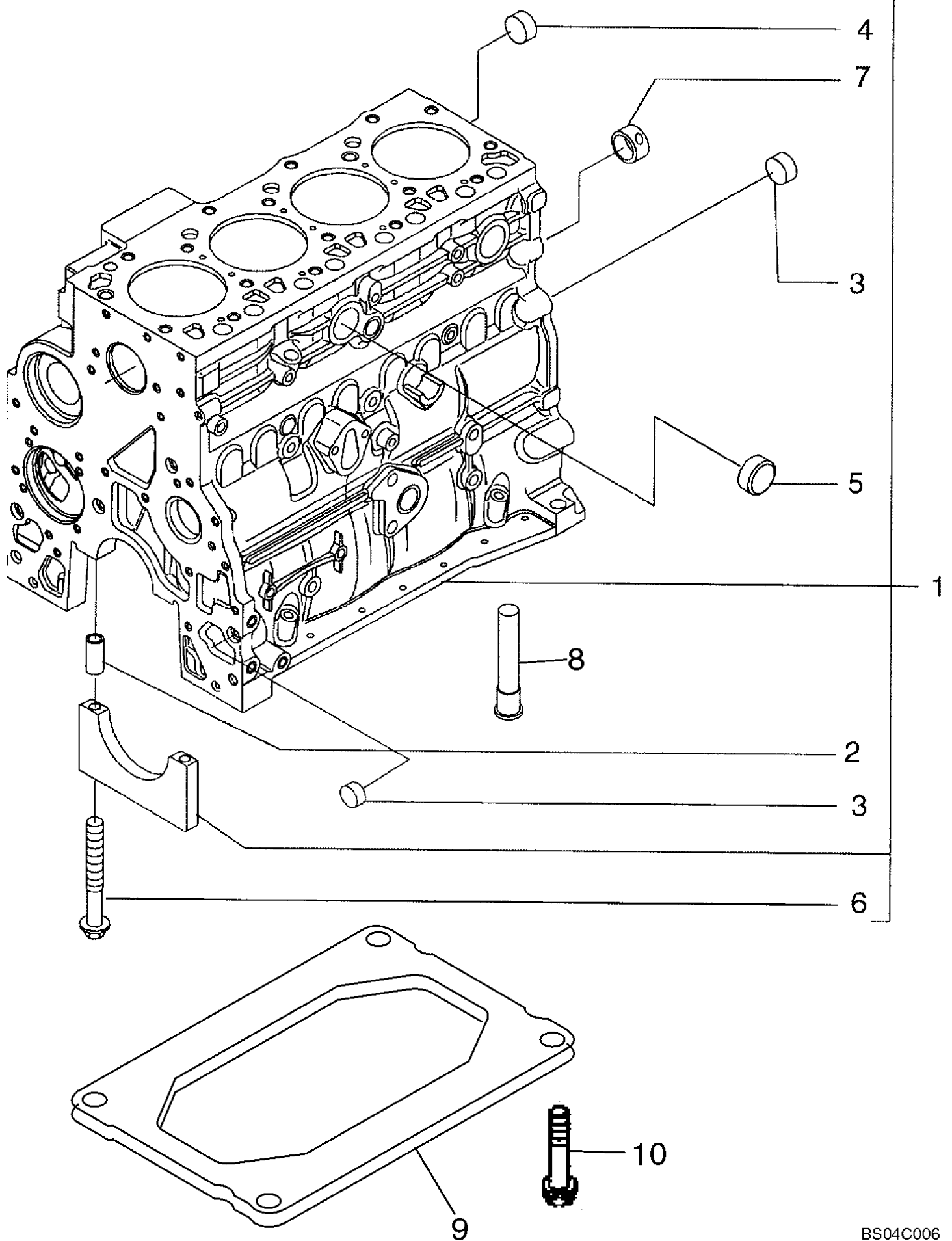
Ref	Part Number	Qty	Description
1	87328613	1	ENGINE, Four Cylinder Engine; Replaces 87040469; Without Alternator; Incl. Parts On Figures 02-06 - 02-37, 03-04 - 03-11, 04-02



430 SKID STEER (2/05-)

02-08A ENGINE - BLOCK HEATER

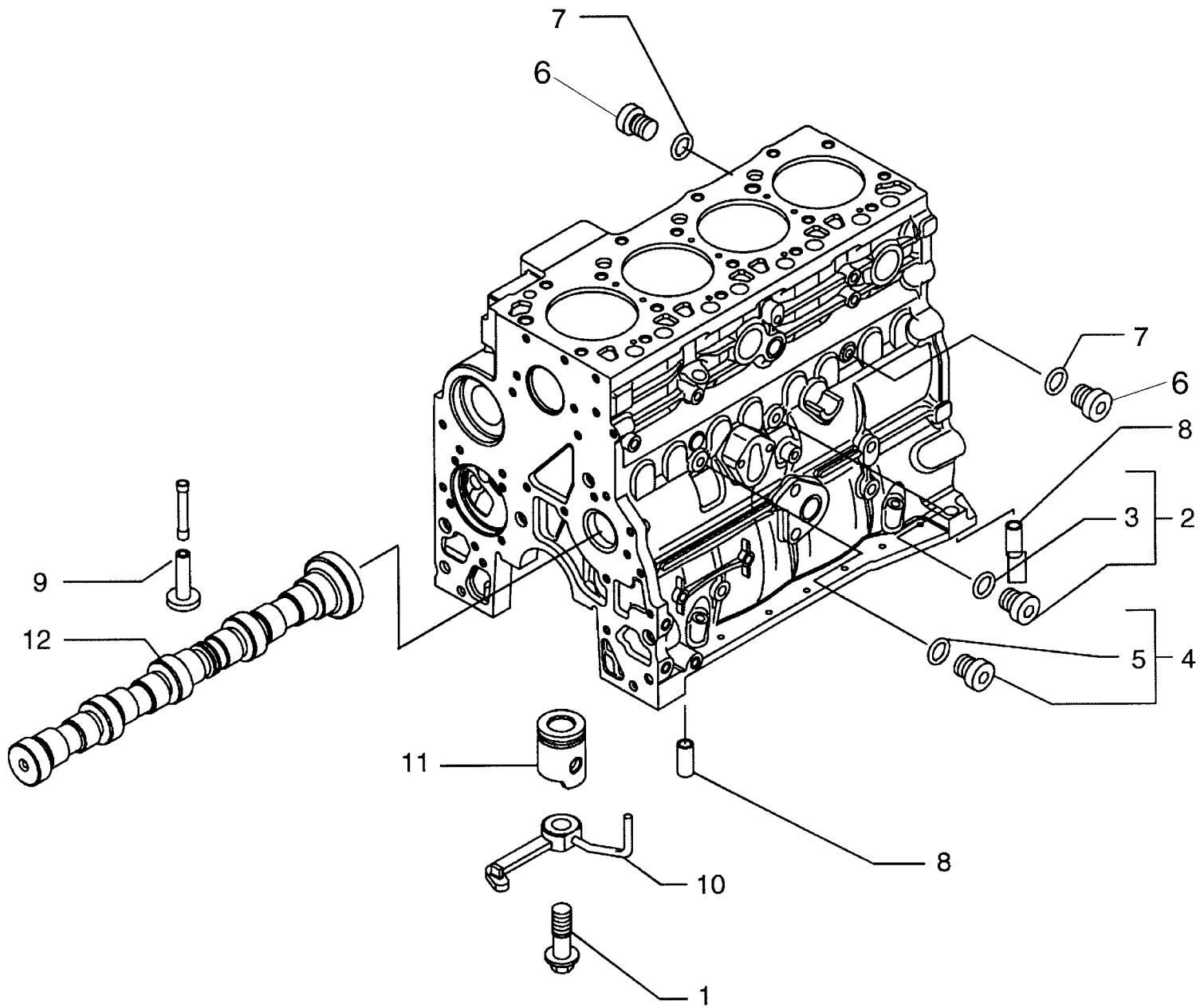
Ref	Part Number	Qty	Description
	87017686	1	DIA, Construction, Engine Heater; Incl. 1A - 5
1	196466A1	1	CABLE, ELECTRIC, 1829 mm (72 in); No Longer Available, Order 87105748
1A	87105748	1	CABLE, ELECTRIC,
2	8602005	1	HEATER, 750W, 120V
3	L18331	1	STRAP,
4	895-11008	2	WASHER, M8 x 16 x 1.6, M8 x 16 x 1.6
5	120104	2	SCREW, Hex, M8 x 20, 8.8,



430 SKID STEER (2/05-)

02-09 CYLINDER BLOCK

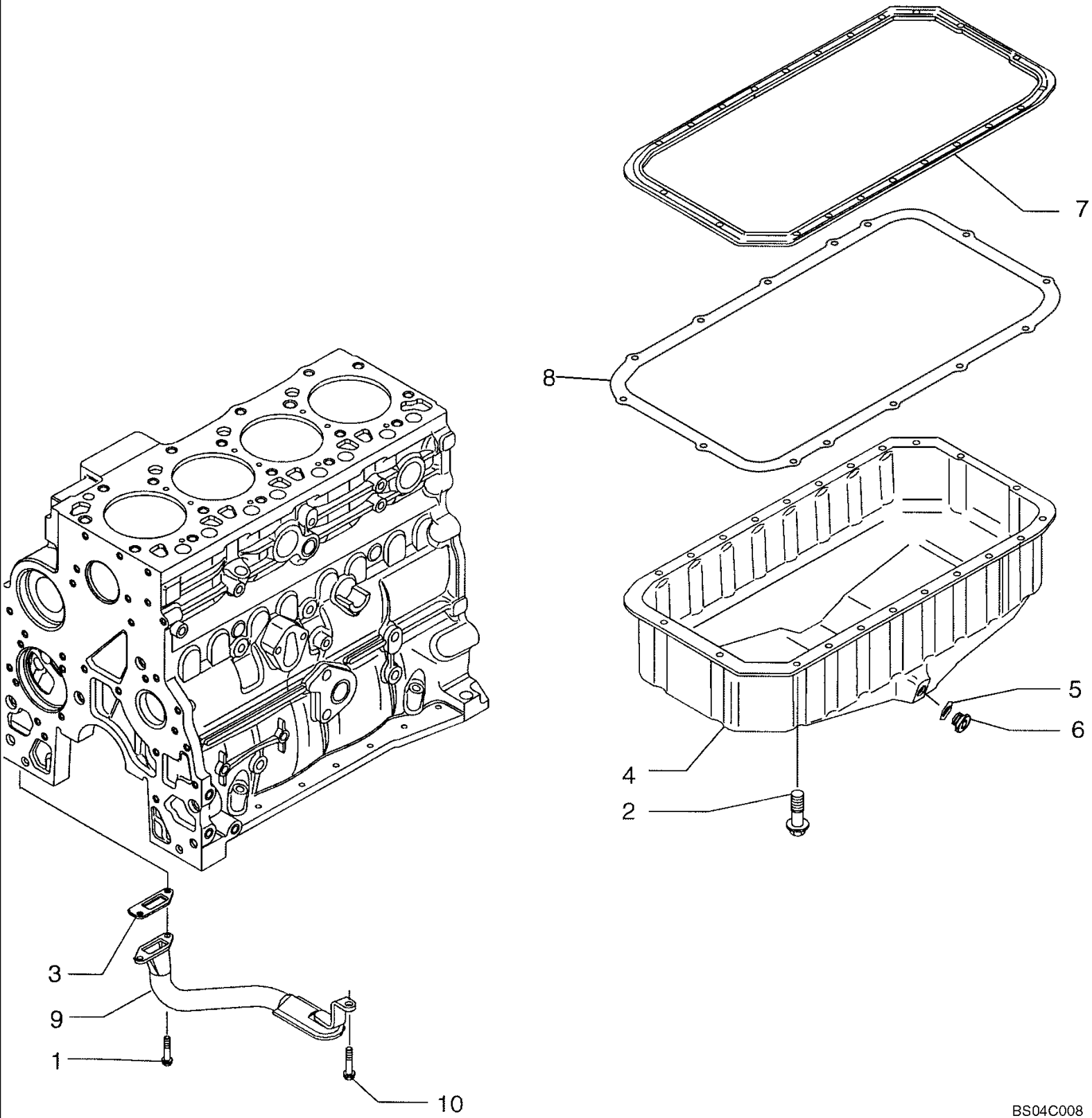
Ref	Part Number	Qty	Description
1	2830083	1	CYLINDER BLOCK, Incl. Ref 2 - 7, Plus Main Bearing Caps
	4895919	4	Main Bearing Cap
	4895921	1	Main Bearing Cap
2	4899026	10	DOWEL,
3	4895039	3	PLUG,
4	4895038	4	PLUG,
5	4895228	2	PLUG,
6	4891353	10	SCREW, Flange, M12 x 120
7	4895040	1	BUSHING,
8	4896153	1	PLUG, Piston Cooling
9	2852729	1	STIFFENER, Bedplate, Cylinder Block Stiffener
10	4899032	4	SCREW, M10 x 1.5 x 25



430 SKID STEER (2/05-)

02-10 CYLINDER BLOCK

Ref	Part Number	Qty	Description
1	4894218	4	SCREW,
2	4895605	1	PLUG, 14 x 1.5; Incl. Ref 3
3	4899115	1	O-RING,
4	4899009	1	PLUG, 10 x 1.5; Incl. Ref 5
5	4899072	1	O-RING,
	4895392	2	PLUG, 18 x 1.5; Incl. Ref 6, 7
6	4895394	2	PLUG,
7	4895393	1	O-RING,
8	4895049	2	DOWEL,
9	4895180	8	TAPPET,
10	4896865	4	NOZZLE, LUB. OIL JET, Incl. Ref 1
11	REF	1	INSTRUCTION, PISTON; See Figure 02-23
12	REF	1	INSTRUCTION, CAMSHAFT; See Figure 02-26



430 SKID STEER (2/05-)

02-11 OIL PUMP, PAN

Ref	Part Number	Qty	Description
1	4899020	2	SCREW, Flange, M8 x 20
2	4899091	14	SCREW, Flange, M8 x 40
3	4898301	1	GASKET,
4	2853048	1	PAN, ENGINE OIL,
5	2853728	1	O-RING,
6	4894139	1	PLUG, 22 x 1.5; Does Not Include Seal, Purchase Seal Separately
7	4897877	1	GASKET,
8	4897876	1	SPACER,
9	2853050	1	PIPE, Oil Suction; Includes Screen Which Is Not Serviced Separately
10	4895291	1	SCREW, Flange, M10 x 120



Suggest:

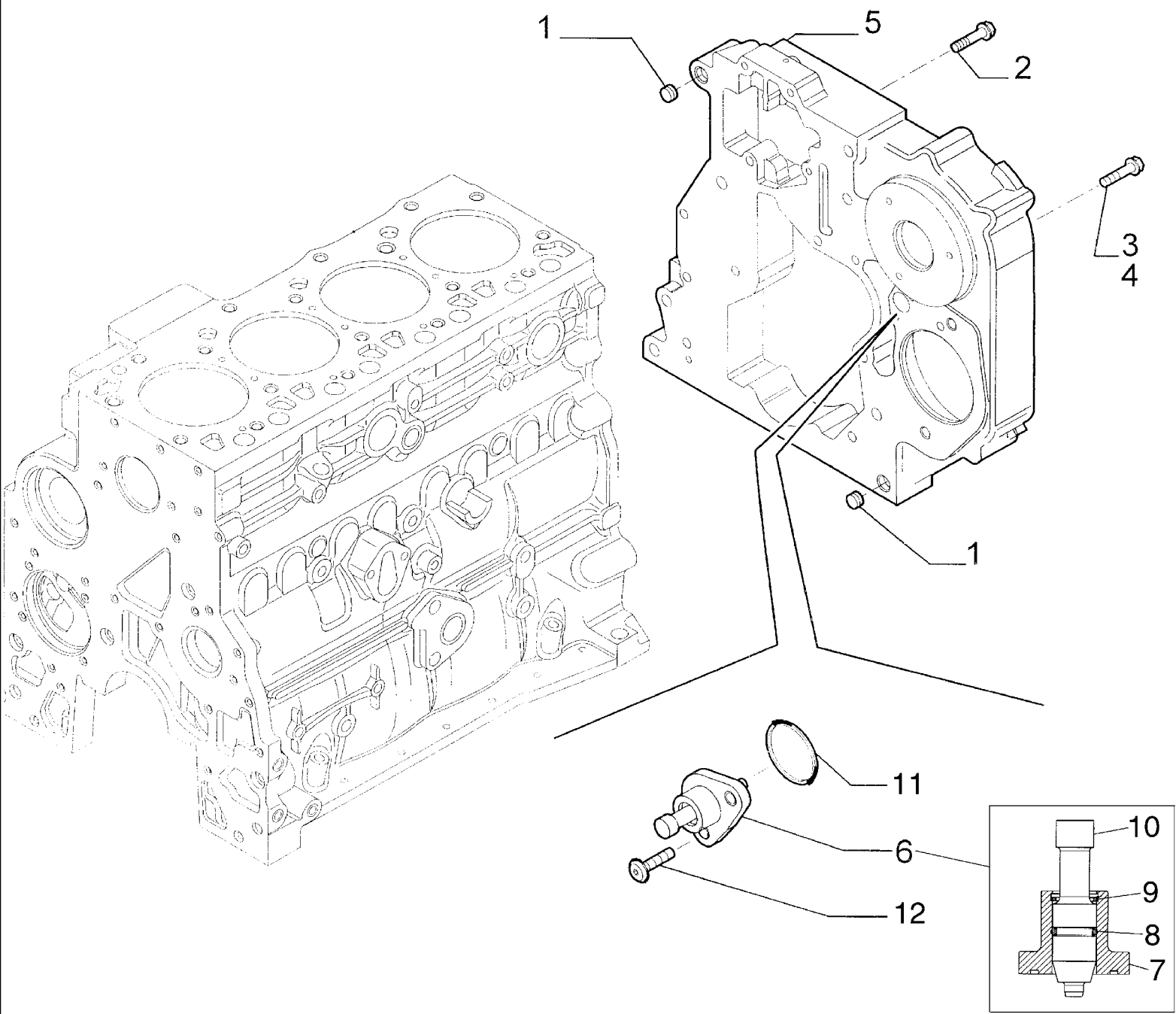
If the above button click is invalid.

Please download this document

first, and then click the above link

to download the complete manual.

Thank you so much for reading



<https://www.ebooklibonline.com>

Hello dear friend!

Thank you very much for reading.

Enter the link into your browser.

The full manual is available for immediate download.

<https://www.ebooklibonline.com>