

010 COMPLETE ENGINE

Pos.	Part No.	Description	Dimension	Quantity	Conditions
1	00 2193 274 3	ENGINE	MAX ECER120 582091644	1	1)
2	00 2193 272 2	ENGINE	MAX ECER120 5802091640	1	2)
3	00 2193 270 2	ENGINE	MAX ECER120 5802091636	1	3)
4	00 2193 268 2	ENGINE	MAX ECER120 5802091561	1	4)
5	00 2193 262 2	ENGINE	MAX ECER120 5802091439	1	5)
6	00 2193 254 3	ENGINE	MAX ECER120 5802090785	1	6)
7	00 2193 010 3	ENGINE	MAX ECER120 5802090783	1	7)
8	00 2193 256 2	ENGINE	MAX ECER120 5802090782	1	8)
9	00 2193 258 2	ENGINE	MAX ECER120 5802090781	1	9)
10	00 2193 006 3	ENGINE	MAX ECER120 5802090780	1	10)

1) Equipment

TJ_P16_0452	Air compressor
TJ_P16_0472	Air compressor with air drier

2) Equipment

TJ_P16_0453	Air compressor
TJ_P16_0473	Air compressor with air drier

3) Equipment

TJ_P16_0454	Air compressor
TJ_P16_0474	Air compressor with air drier

4) Equipment

TJ_P16_0455	Air compressor
TJ_P16_0475	Air compressor with air drier

5) Equipment

TJ_P16_0456	Air compressor
TJ_P16_0476	Air compressor with air drier

6) Equipment

TJ_P16_0442	Without air compressor
-------------	------------------------

7) Equipment

TJ_P16_0443	Without air compressor
-------------	------------------------

8) Equipment

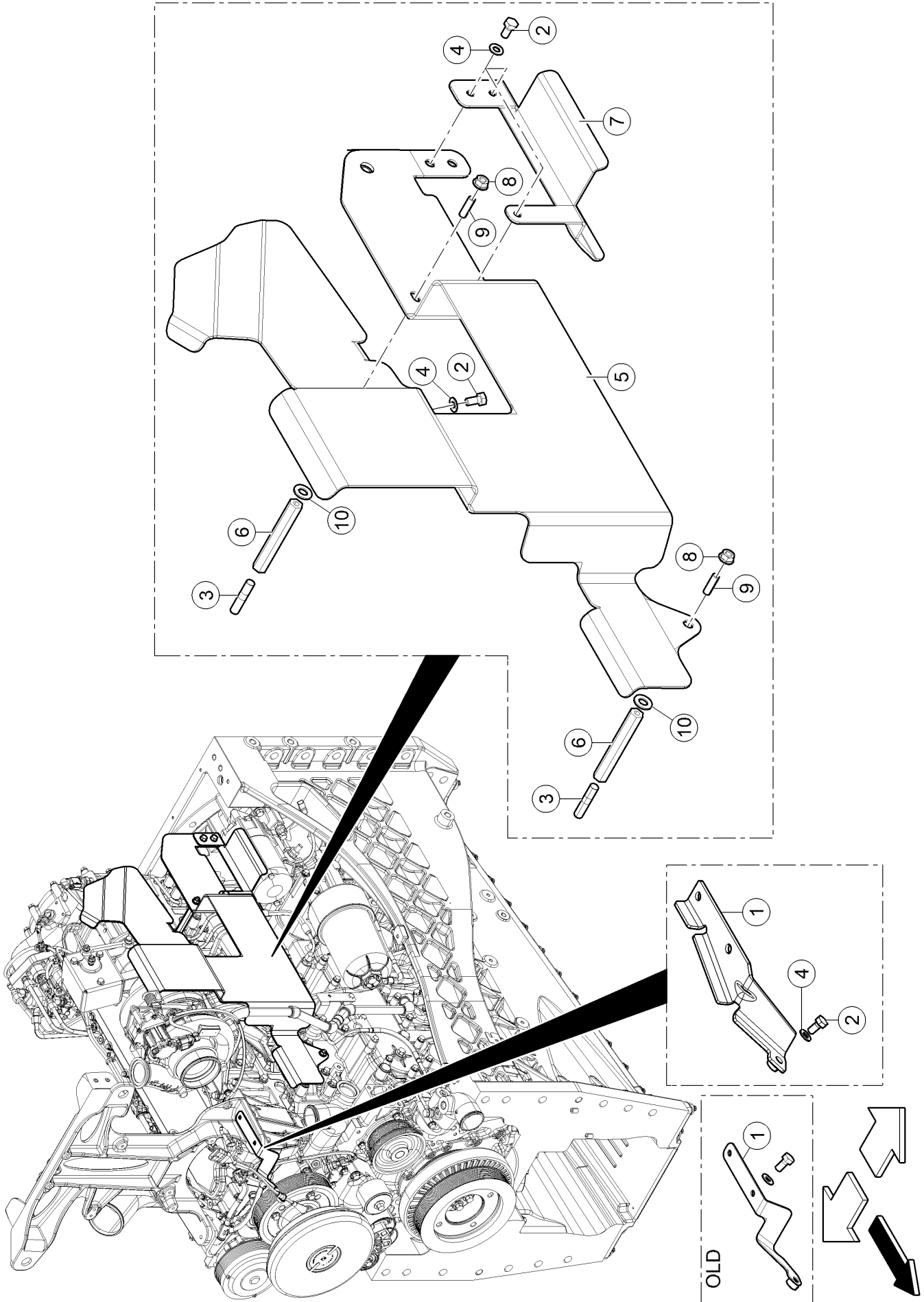
TJ_P16_0444	Without air compressor
-------------	------------------------

9) Equipment

TJ_P16_0445	Without air compressor
-------------	------------------------

10) Equipment

TJ_P16_0446	Without air compressor
-------------	------------------------



<https://www.ebooklibonline.com>

Hello dear friend!

Thank you very much for reading.

Enter the link into your browser.

The full manual is available for immediate download.

<https://www.ebooklibonline.com>

010 COMPLETE ENGINE

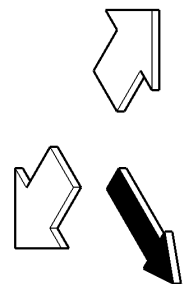
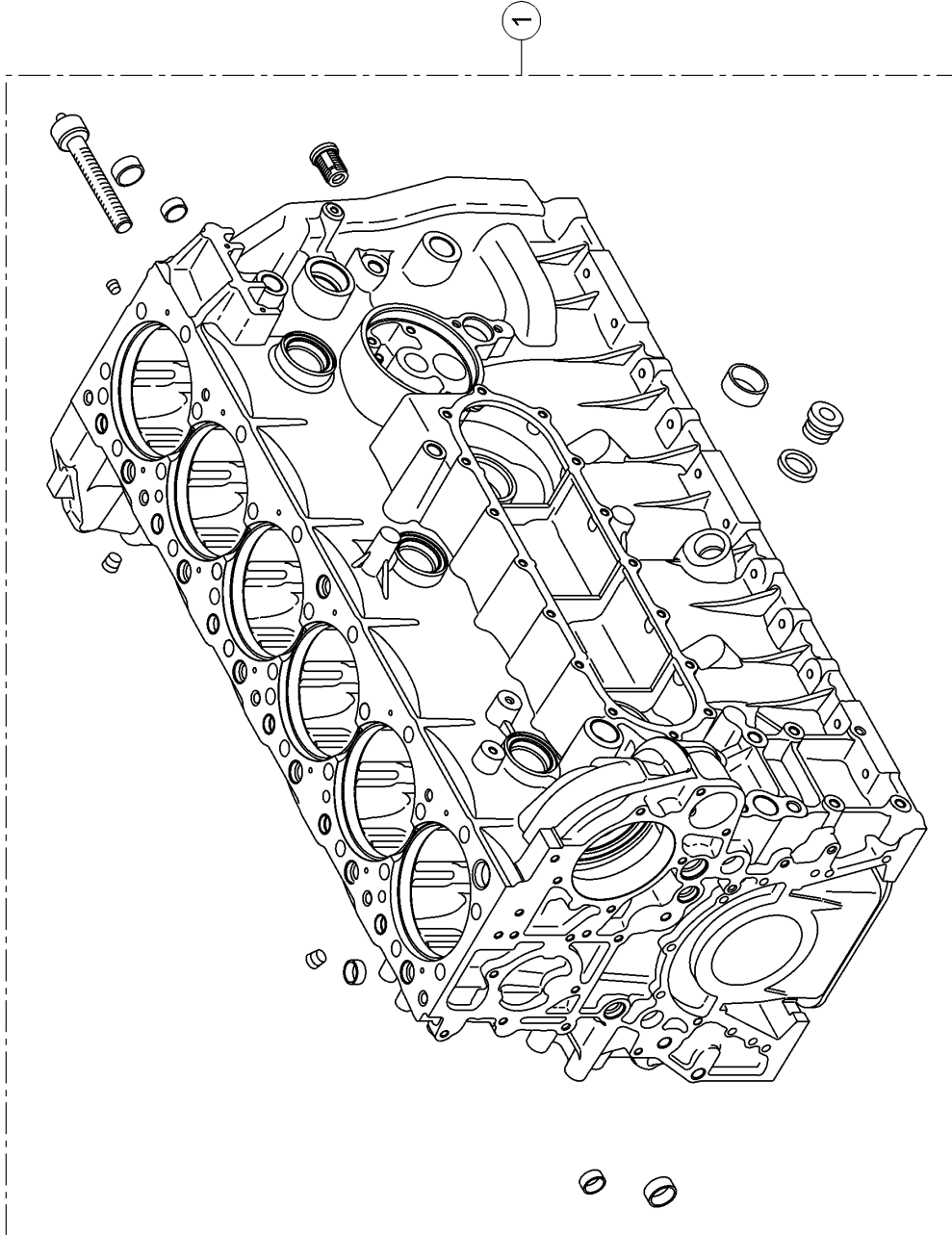
Pos.	Part No.	Description	Dimension	Quantity	Conditions
1	00 2193 955 1	BRACKET		1	1)
1	00 2709 199 0	STRAP	MAINTIEN CABLAGE	1	2)
2	00 0367 906 0	HEXAGON HEAD BOLT	M08X16	5	
3	77 0302 714 2	STUD BOLT	M10X30-BM15	2	
4	00 0236 912 2	FLAT WASHER	ERS.D.107060 8 - 8,4X16X1,6	5	
5	00 2192 231 1	PROTECTOR		1	3)
5	00 2672 189 0	PROTECTOR	PROTECTEUR THERMIQUE	1	4)
6	00 2195 472 1	SPACER		2	
7	00 2195 578 1	PROTECTOR		1	
8	00 0216 721 0	NUT	M 8	2	
9	00 2165 743 0	STUD		2	
10	00 1070 812 1	FLAT WASHER	8-8,4X30X2	2	

1) machine no. + up to A4401398

2) machine no. + from A4401399

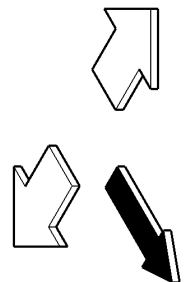
3) machine no. + up to A4401131

4) machine no. + from A4401132



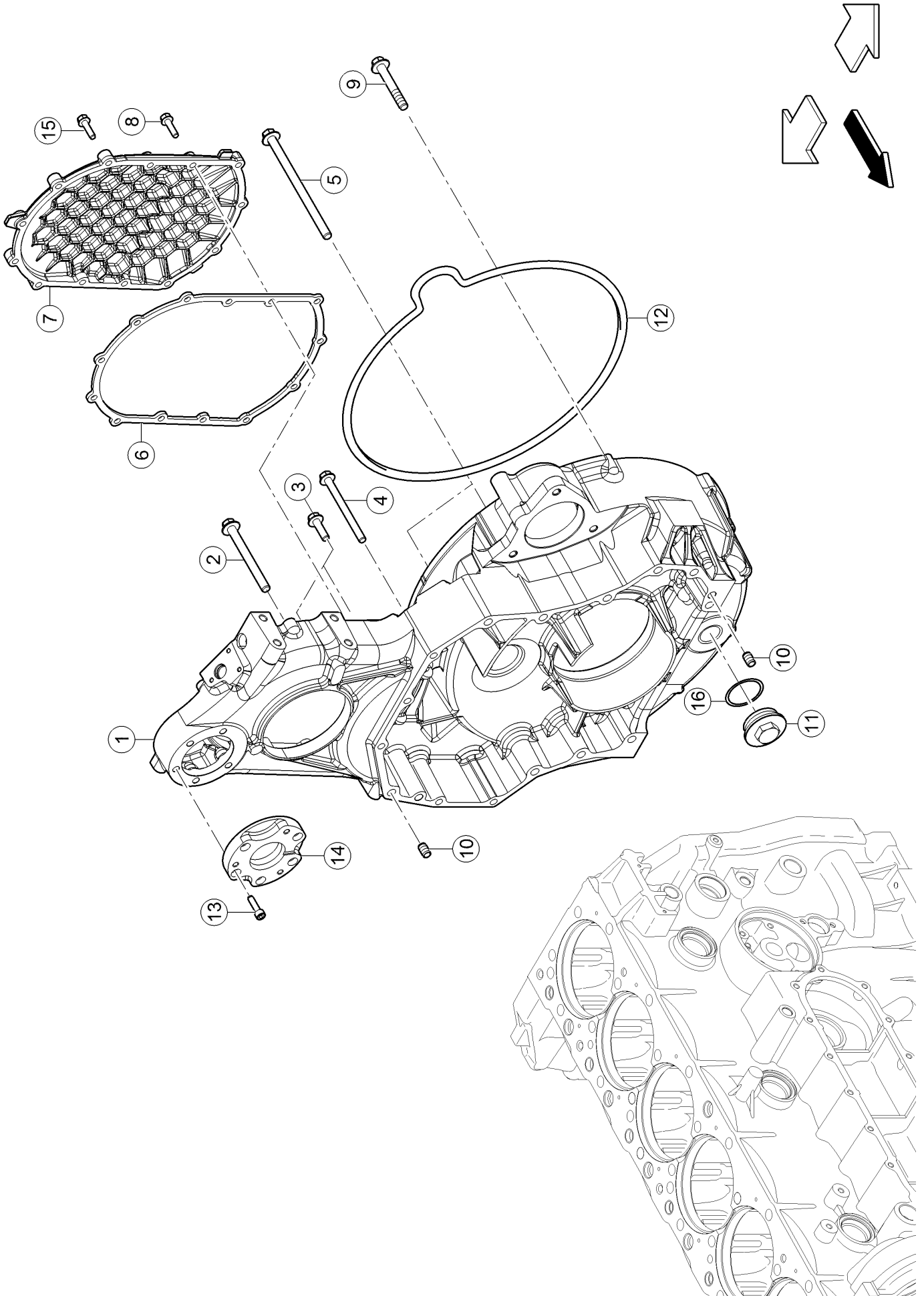
100 CRANKCASE

Pos.	Part No.	Description	Dimension	Quantity	Conditions
1	00 1143 130 0	CASING		1	



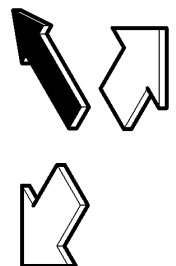
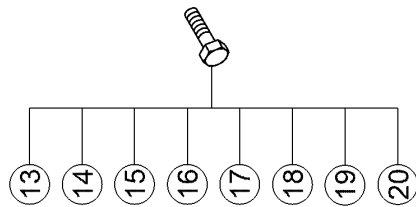
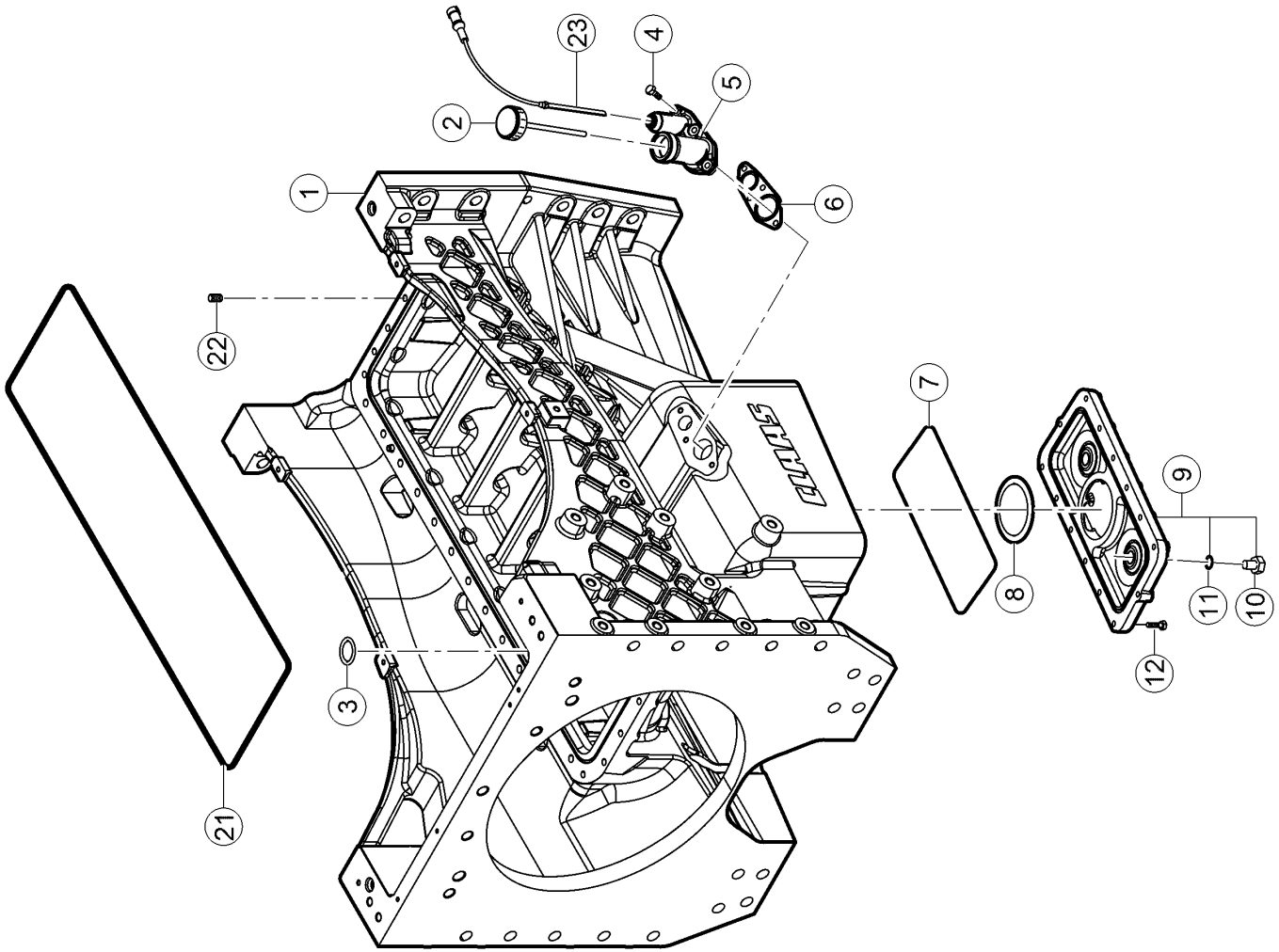
100 CRANKCASE

Pos.	Part No.	Description	Dimension	Quantity	Conditions
1	00 1144 000 0	PLATE		1	
2	00 1144 002 0	SCREW	HM10X20	12	
3	00 1144 005 0	SCREW		14	
4	00 1144 006 0	CASING		1	
5	00 1144 007 0	WASHER		9	
6	00 1144 008 0	SCREW		9	



120 TIMING CASE

Pos.	Part No.	Description	Dimension	Quantity	Conditions
1	00 1143 461 0	CASING		1	
2	00 1143 462 0	SCREW		2	
3	00 1143 463 0	SCREW		2	
4	00 1143 464 0	SCREW		3	
5	00 1143 465 0	SCREW		3	
6	00 1143 466 0	FLAT SEAL		1	
7	00 1160 182 0	COVER		1	
8	00 1140 679 0	SCREW		9	
9	00 1160 183 0	SCREW		5	
10	00 1143 469 0	CENTRING PIN		2	
11	00 1160 185 0	SCREW		1	
12	00 1143 471 0	FLAT SEAL		1	
13	00 1143 472 0	SCREW	M8X30	5	
14	00 1143 473 0	FLANGE		1	
15	00 1140 887 0	SCREW		4	
16	00 1140 744 0	SEALING RING		1	



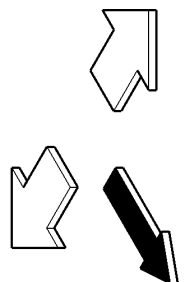
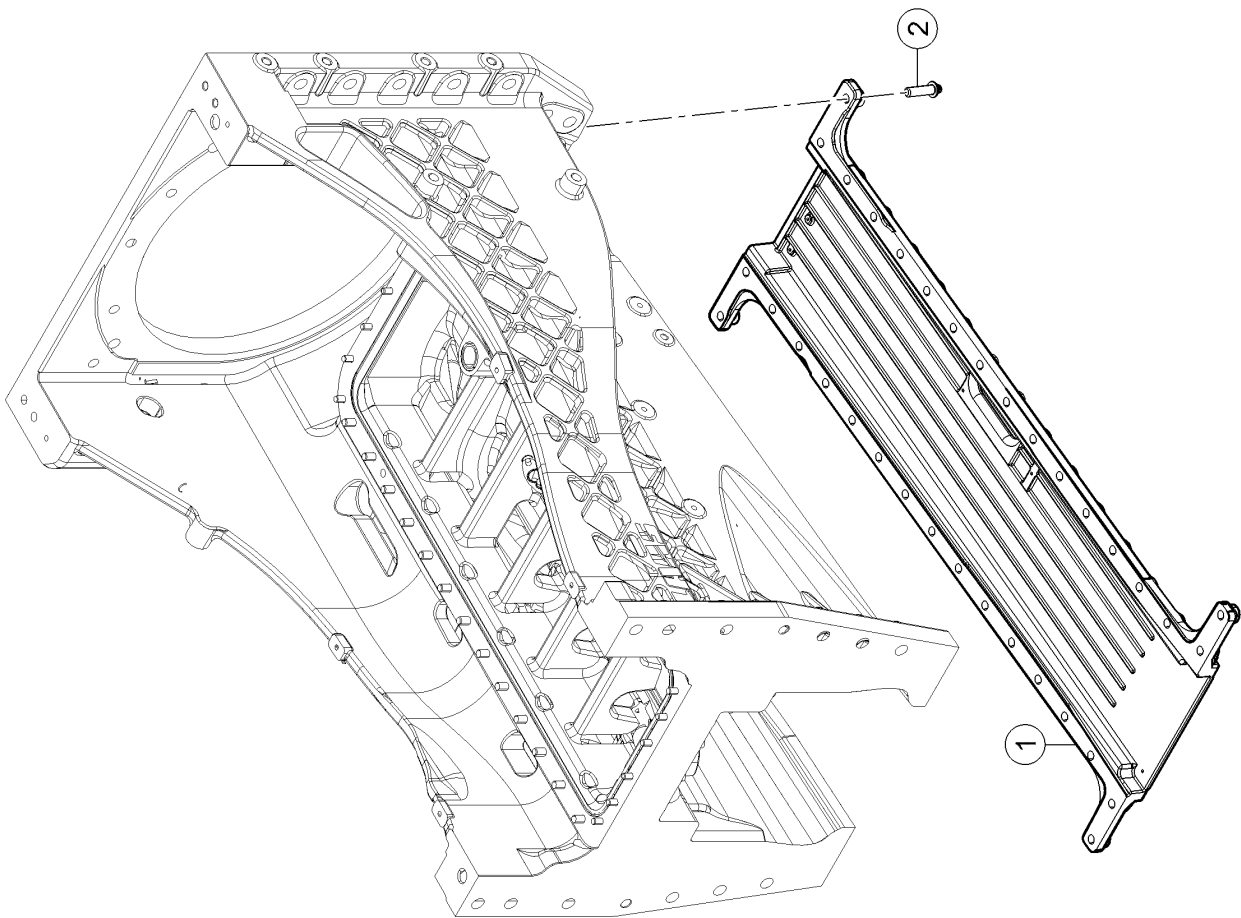
160 OIL PAN

Pos.	Part No.	Description	Dimension	Quantity	Conditions
1	00 1160 189 1	CRANKCASE		1	
2	00 1143 168 0	PLUG		1	
3	00 1143 169 0	O-RING		1	
4	00 1139 409 0	SCREW		4	
5	00 1143 170 0	TUBE		1	
6	00 1143 171 0	FLAT SEAL		1	
7	00 1143 173 0	FLAT SEAL		1	
8	00 1143 174 0	SEALING RING		1	
9	00 1143 175 0	CASING		1	
10	00 1143 177 0	PLUG		2	
11	77 0102 690 5	O-RING	23,47X2,62 NBR 80 SH	2	
12	00 1143 178 0	SCREW	M08X35	14	
13	00 1143 179 0	SCREW		10	
14	00 1143 180 0	SCREW		14	
15	00 1143 181 0	SCREW		2	
16	00 1143 182 0	SCREW		4	
17	00 1143 188 0	SCREW		1	
18	00 1143 189 0	SCREW		4	
19	00 1160 190 0	SCREW		34	
20	00 1160 183 0	SCREW		2	
21	00 1157 268 0	O-RING		1	
22	00 1143 194 0	CENTRING PIN		2	
23	00 1143 353 0	SENSOR		1	1)

1) CCN

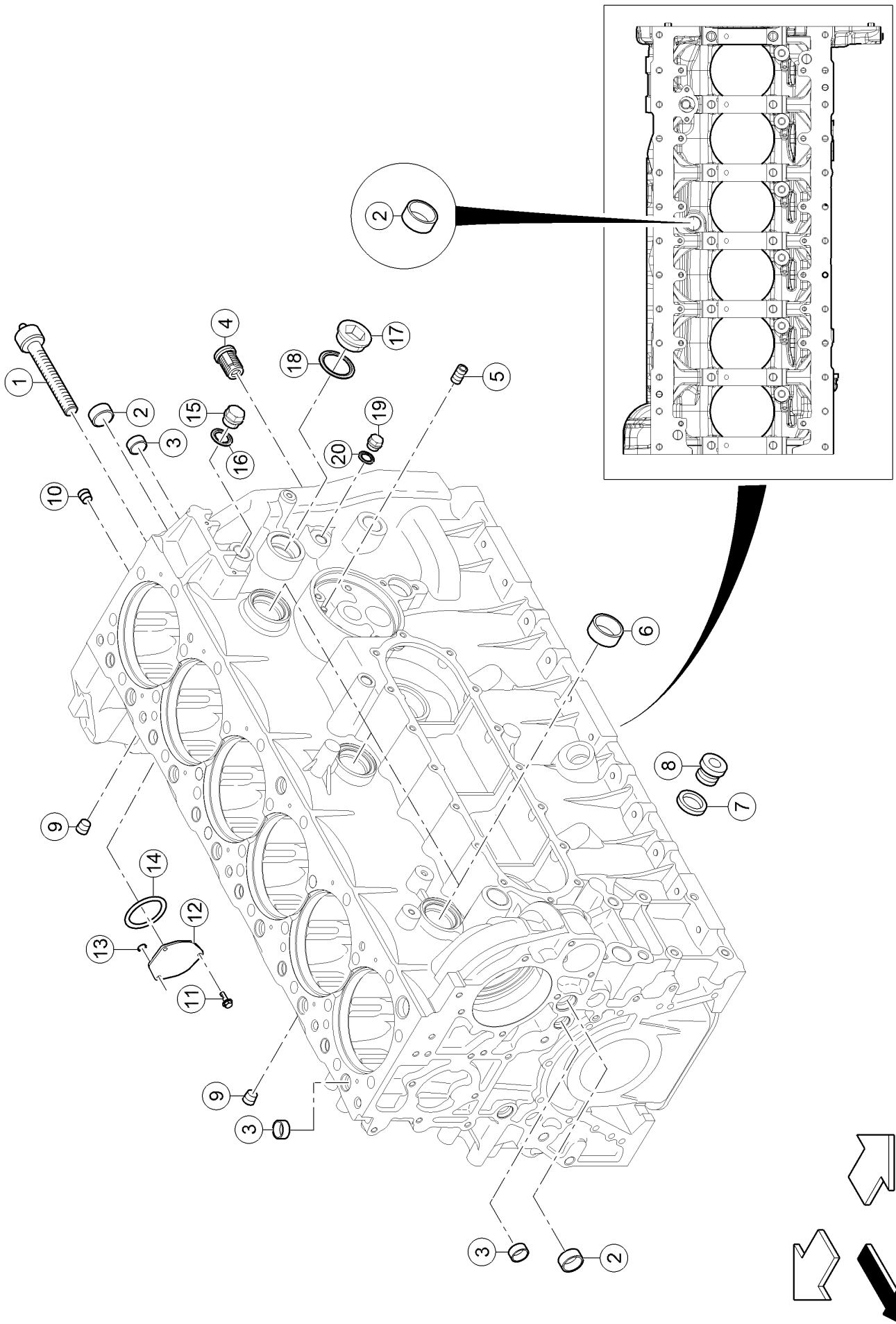
CCN-B052

engine oil level sensor



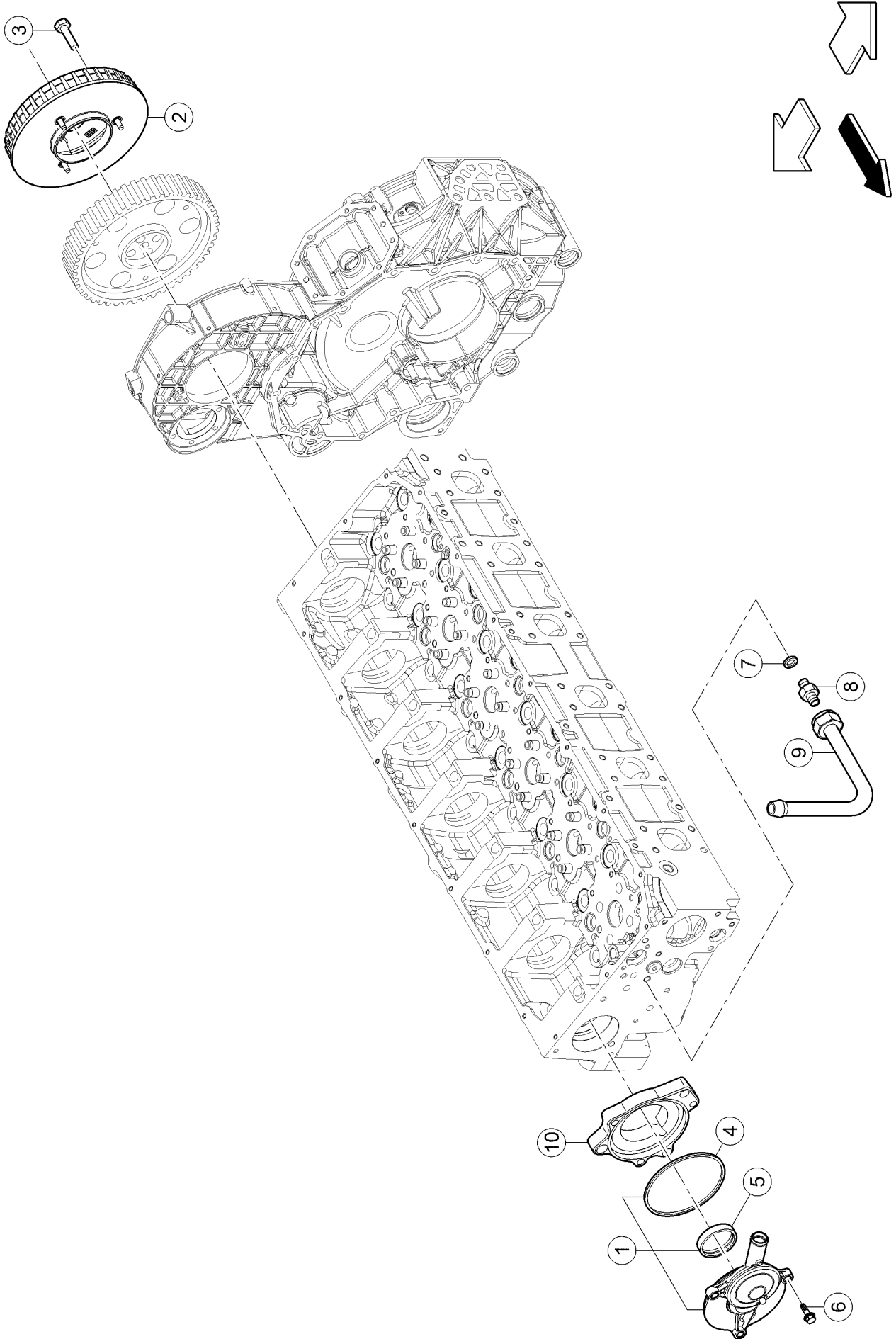
160 OIL PAN

Pos.	Part No.	Description	Dimension	Quantity	Conditions
1	00 2153 088 2	PLATE		1	
2	00 2155 900 0	DODECAGON BOLT W.FLANGE	M14X50	34	



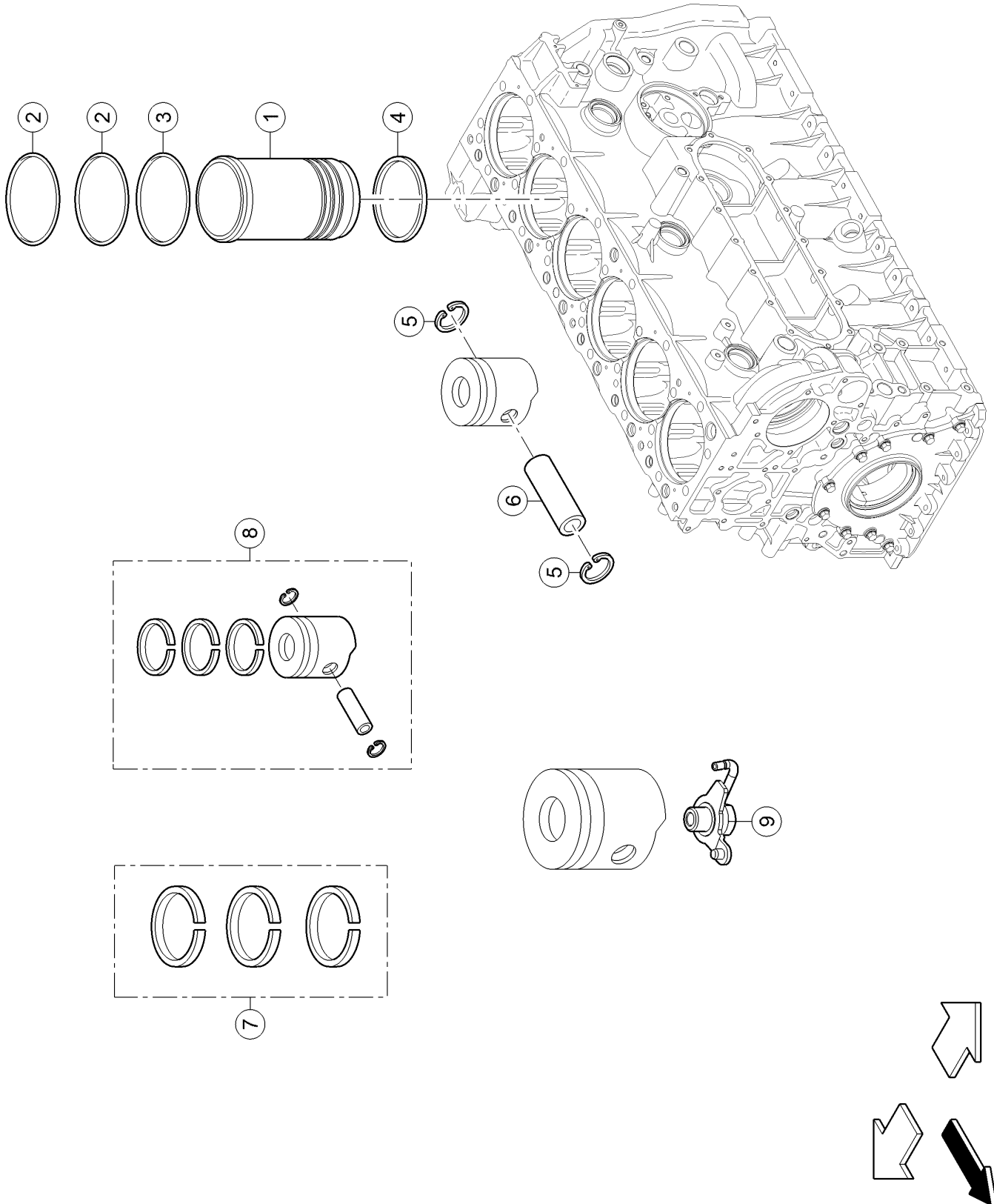
180 PLUGS

Pos.	Part No.	Description	Dimension	Quantity	Conditions
1	00 1143 978 0	PLUG		3	
2	60 0502 563 1	PLUG	Ø 28	3	
3	00 1143 979 0	PLUG		10	
4	00 1143 981 0	VALVE		1	
5	00 1143 982 0	CENTRING PIN		3	
6	60 0502 562 9	PLUG	Ø 45	4	
7	00 1160 195 0	GASKET		1	
8	00 1143 983 0	PLUG		1	
9	00 1143 689 0	PLUG	Ø 1/4"	3	
10	00 1139 396 0	PLUG		1	
11	00 1144 670 0	SCREW		3	1)
12	00 1144 671 0	PLATE		1	1)
13	00 1144 672 0	O-RING		3	1)
14	00 1144 674 0	O-RING		1	1)
15	00 1160 185 0	SCREW		1	
16	00 1140 744 0	SEALING RING		1	
17	60 0502 537 9	LOCK		1	
18	00 1161 121 0	GASKET		1	
19	00 1138 789 0	SCREW PLUG		1	
20	60 0503 101 3	SEALING RING		1	
1) Equipment			Without penumatic trailer brake		
		TJ_J40_0000	Without trailer brake system		
		TJ_J40_0030	Hydraulic brakes		



200 CRANK CASE BREATHER

Pos.	Part No.	Description	Dimension	Quantity	Conditions
1	00 1144 495 0	BREATHER		1	
2	00 1160 196 0	OIL VAPOUR FILTER		1	
3	00 1140 737 0	HEXAGON HEAD BOLT	M6X16	3	
4	00 1144 497 0	O-RING		1	
5	00 1144 498 0	SEALING RING		1	
6	00 1144 071 0	SCREW	M06X20	3	
7	00 1145 280 0	SEALING RING		1	
8	00 1145 281 0	UNION CONNECTOR		1	
9	00 1145 282 0	TUBE		1	
10	00 1152 714 0	SUPPORT		1	



100 CYLINDER LINER, PISTON

Pos.	Part No.	Description	Dimension	Quantity	Conditions
1	00 1160 074 0	LINER		6	
2	00 1143 544 0	O-RING		12	1)
3	00 1143 545 0	O-RING		6	1)
4	00 1143 546 0	ADJUSTING DISC		6	2)
4	00 1143 548 0	ADJUSTING DISC		6	3)
4	00 1143 549 0	ADJUSTING DISC		6	4)
4	00 1143 550 0	ADJUSTING DISC		6	5)
5	00 1143 551 0	INT RETAINING RING		12	
6	00 1143 552 0	AXLE		6	
7	00 1160 211 0	SET OF PISTON RINGS		6	
8	00 1160 212 0	ENGINE PISTON		6	
9	00 1160 755 0	NOZZLE		6	

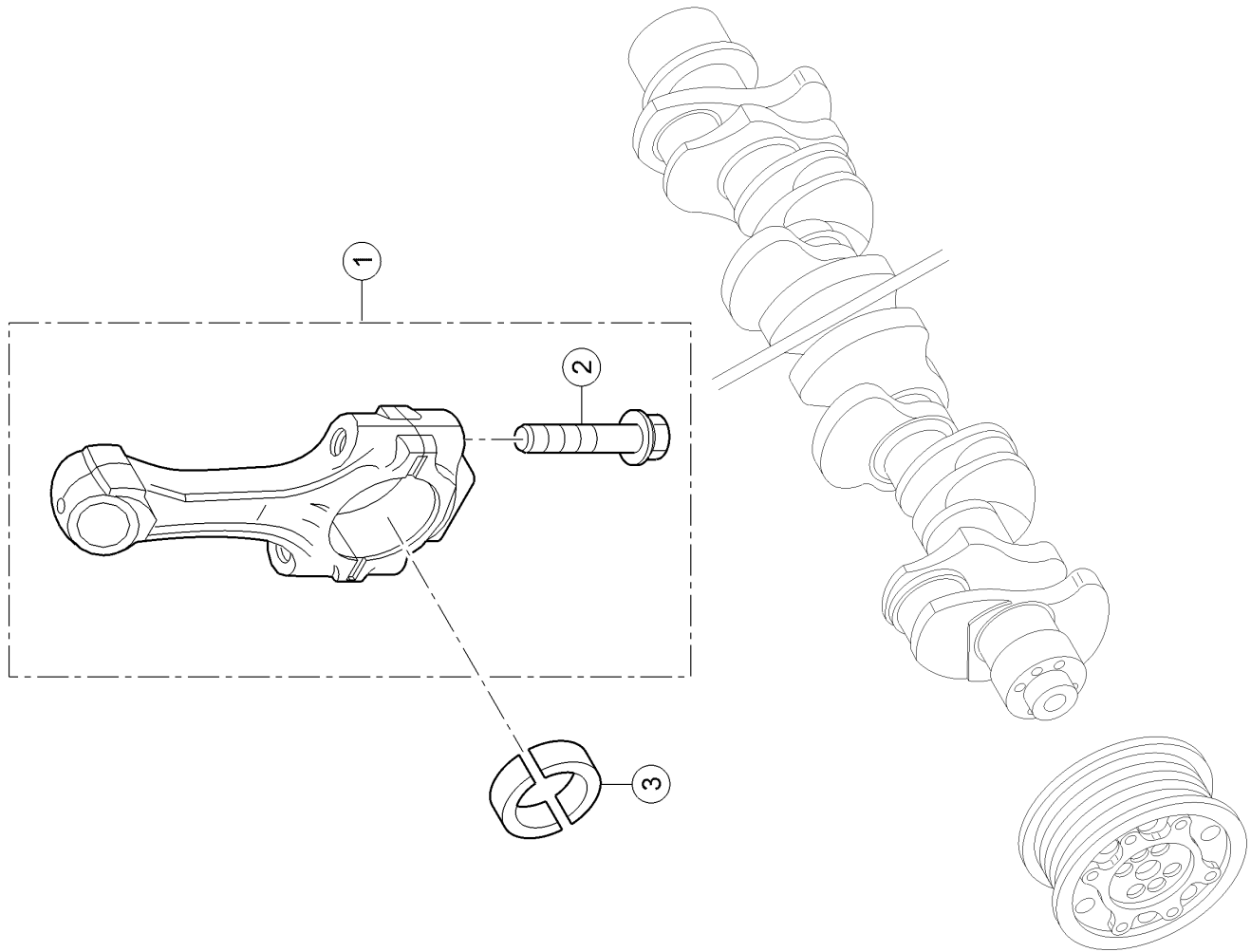
1) Remarks	Dia 120,24 ep 3,53mm
-------------------	----------------------

2) Remarks	ep = 0,08mm
-------------------	-------------

3) Remarks	ep = 0,10 mm
-------------------	--------------

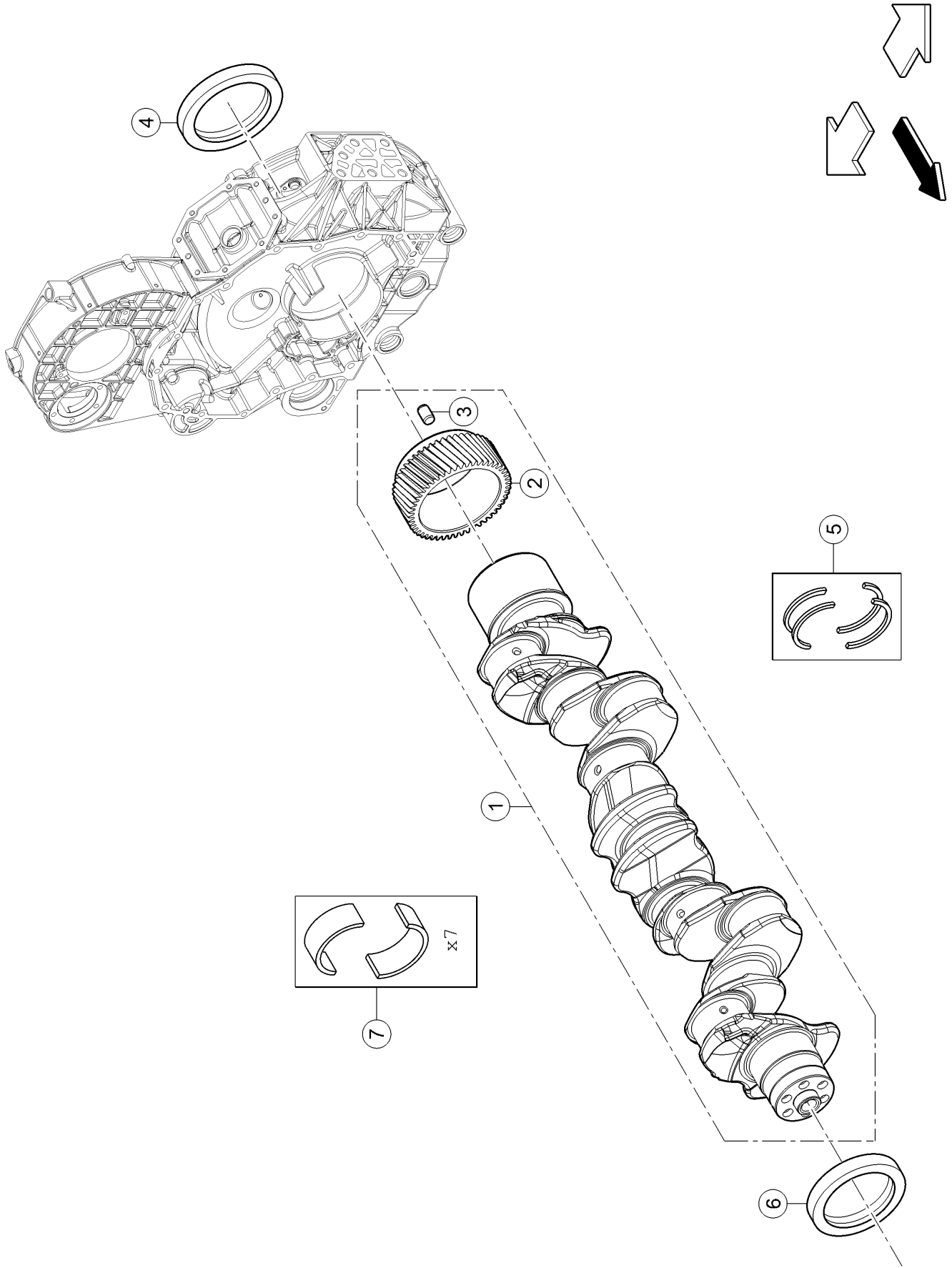
4) Remarks	ep = 0,12 mm
-------------------	--------------

5) Remarks	ep = 0,14 mm
-------------------	--------------



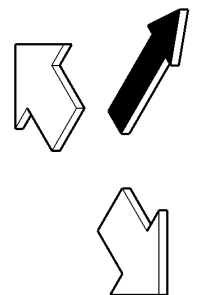
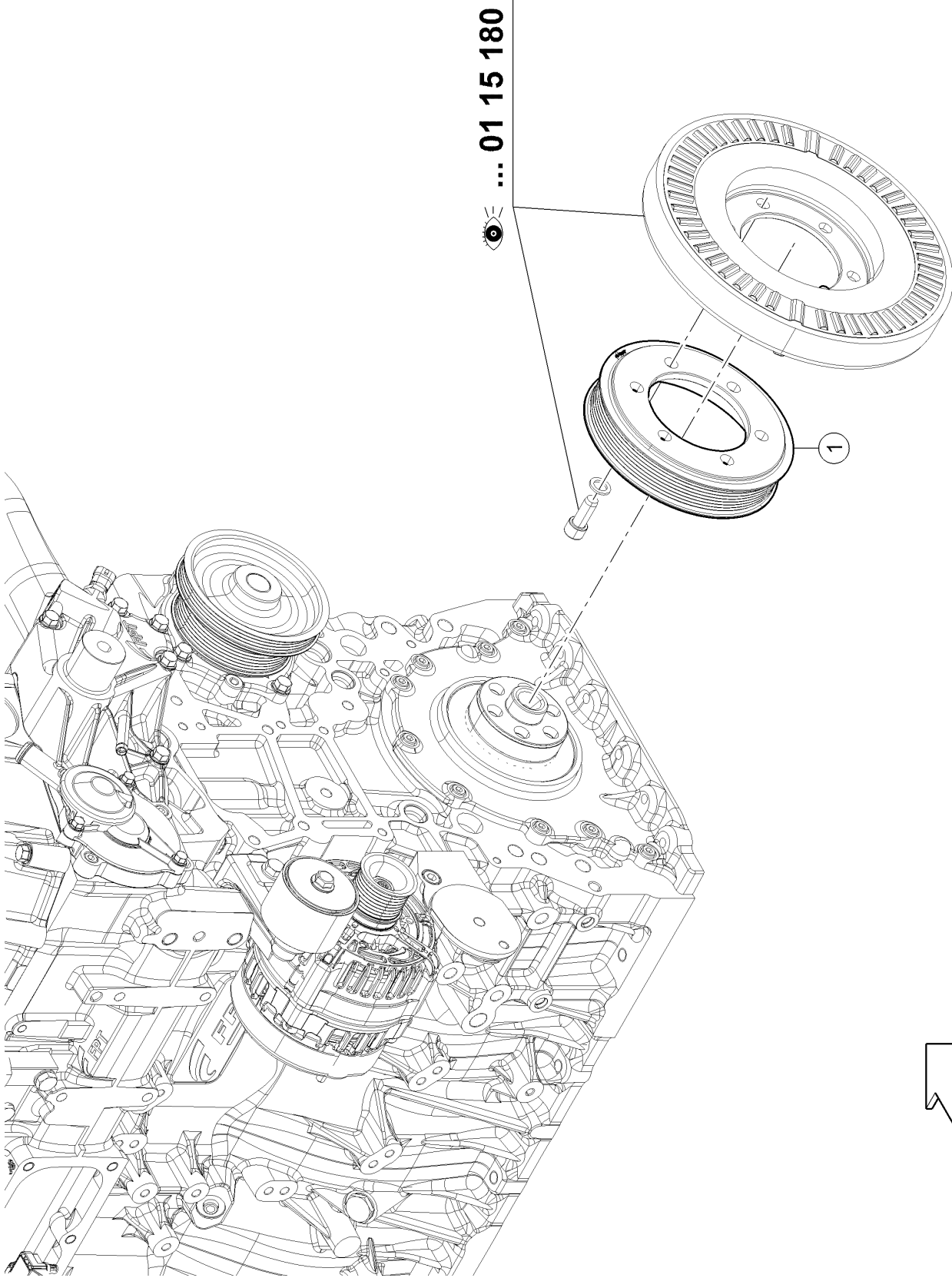
120 CONNECTING ROD, CONNECTING ROD BEARINGS

Pos.	Part No.	Description	Dimension	Quantity	Conditions
1	00 1155 870 0	ROD (ENGINE)		6	
2	00 1143 611 0	SCREW		12	
3	00 1148 092 0	SET OF BEARING BUSHES		6	1)
3	00 1148 093 0	SET OF BEARING BUSHES		6	2)
3	00 1148 094 0	SET OF BEARING BUSHES		6	3)
3	00 1148 095 0	SET OF BEARING BUSHES		6	4)
3	00 1148 096 0	SET OF BEARING BUSHES		6	5)
3	00 1148 097 0	SET OF BEARING BUSHES		6	6)
3	00 1148 098 0	SET OF BEARING BUSHES		6	7)
3	00 1148 099 0	SET OF BEARING BUSHES		6	8)
1)	Remarks		rouge standard		
2)	Remarks		vert standard		
3)	Remarks		rouge noir -0,127 mm		
4)	Remarks		vert noir -0,127 mm		
5)	Remarks		rouge - 0,254 mm		
6)	Remarks		vert -0,254 mm		
7)	Remarks		rouge -0,508 mm		
8)	Remarks		vert -0,508 mm		



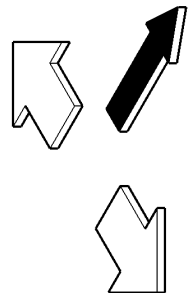
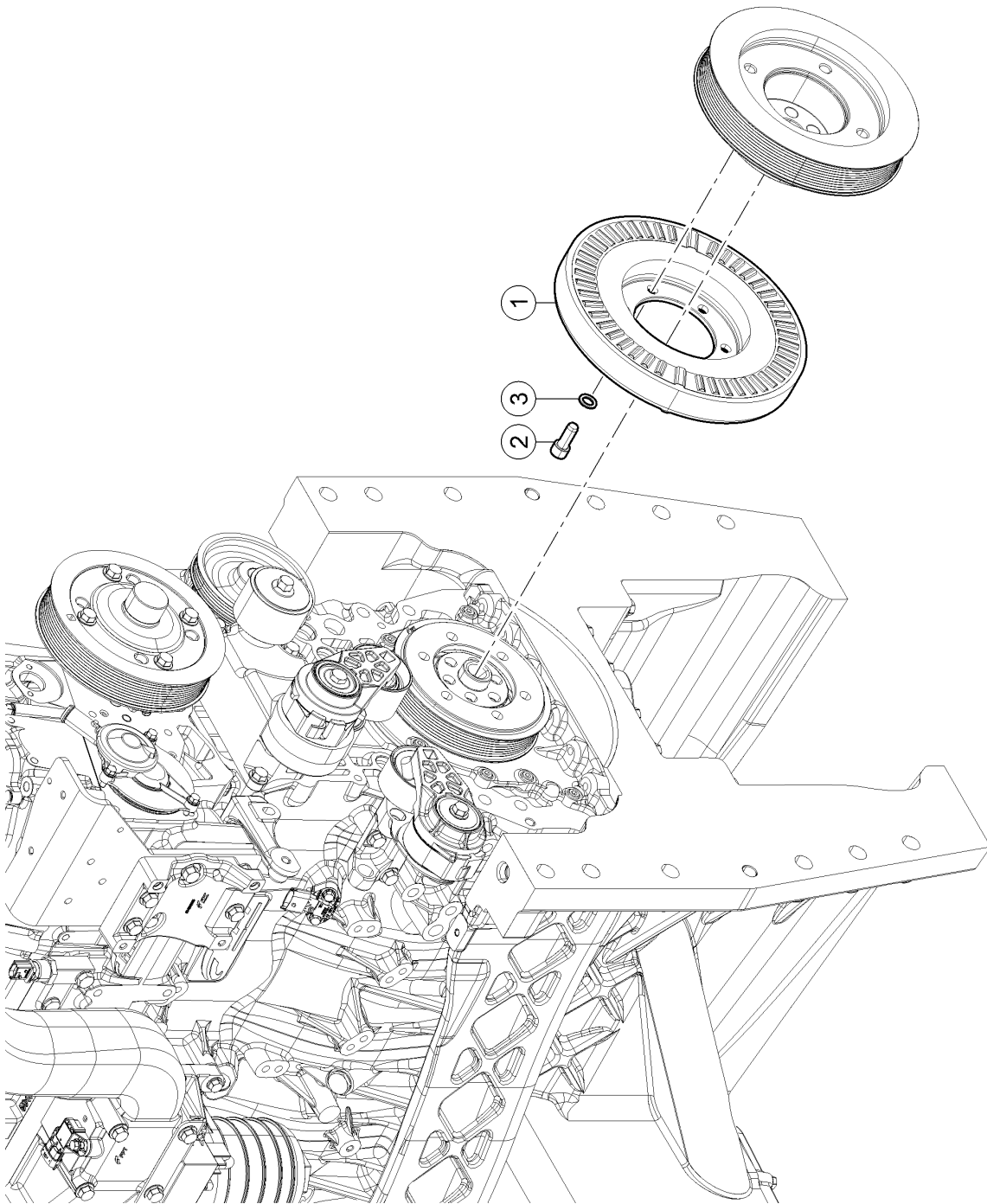
140 CRANKSHAFT

Pos.	Part No.	Description	Dimension	Quantity	Conditions
1	00 1143 202 0	CRANKSHAFT		1	
2	00 1155 902 0	GEAR		1	
3	60 0502 560 7	PIN		1	
4	00 1143 204 0	SEALING RING		1	
5	00 1143 205 0	CHOCK		1	
6	00 1143 206 0	SEALING RING		1	
7	00 1160 214 0	SET OF BEARING BUSHES		1	1)
7	00 1160 215 0	SET OF BEARING BUSHES		1	2)
7	00 1160 216 0	SET OF BEARING BUSHES		1	3)
7	00 1160 217 0	SET OF BEARING BUSHES		1	4)
1)	Remarks		ROUGE .STD		
2)	Remarks		VERT .STD		
3)	Remarks		ROUGE NOIR . -0,127		
4)	Remarks		VERT NOIR . -0,127		



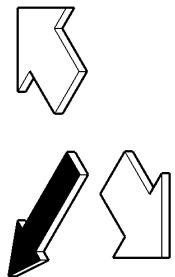
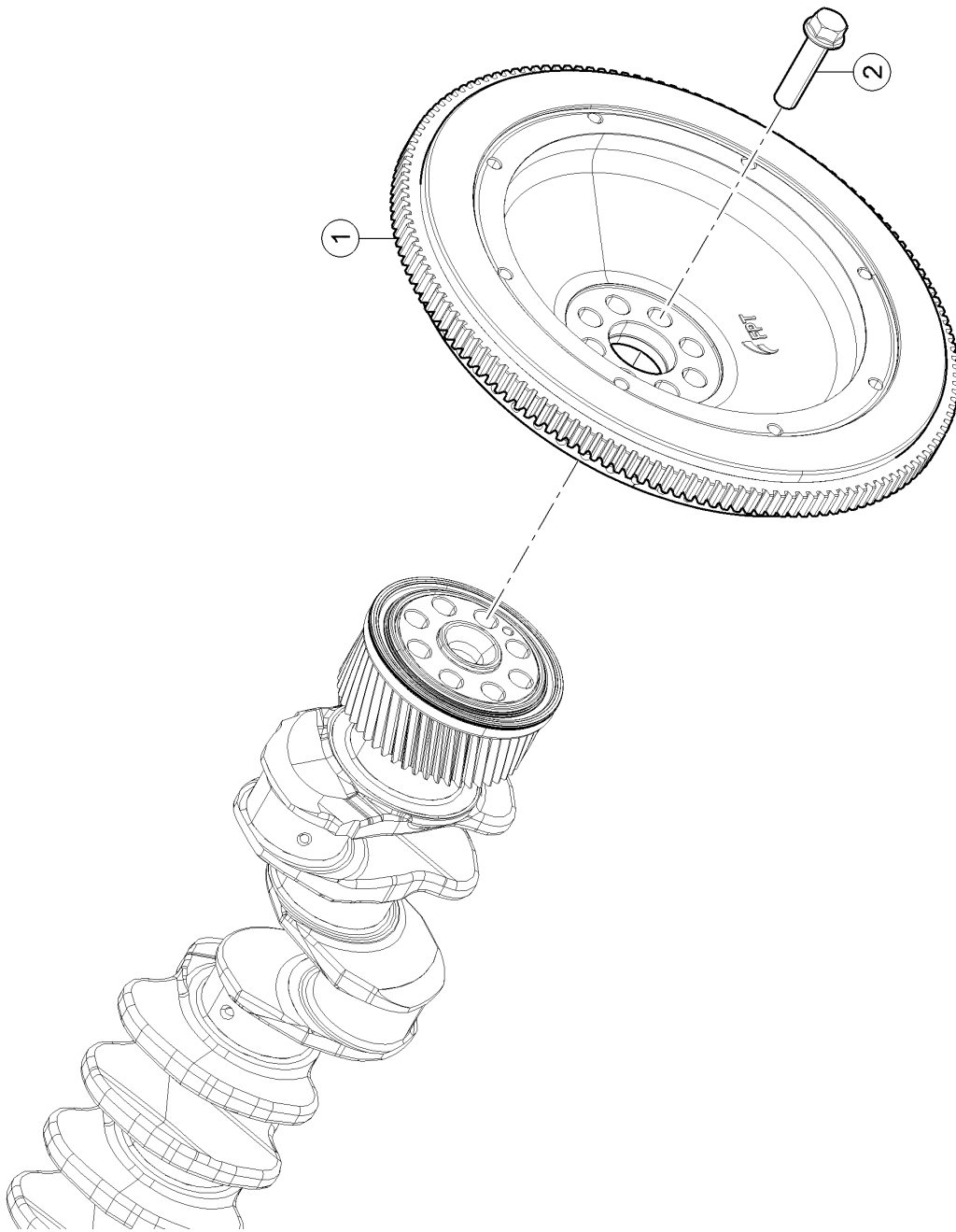
160 CRANKSHAFT PULLEY WHEEL 1)

Pos.	Part No.	Description	Dimension	Quantity	Conditions
1	00 1160 224 0	PULLEY		1	
1)	Equipment	TJ_P02_0442			325 hp max. output, 326 hp type-approved rated output, ECE R 120



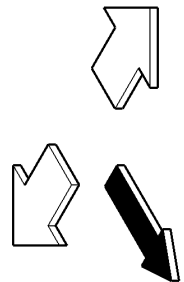
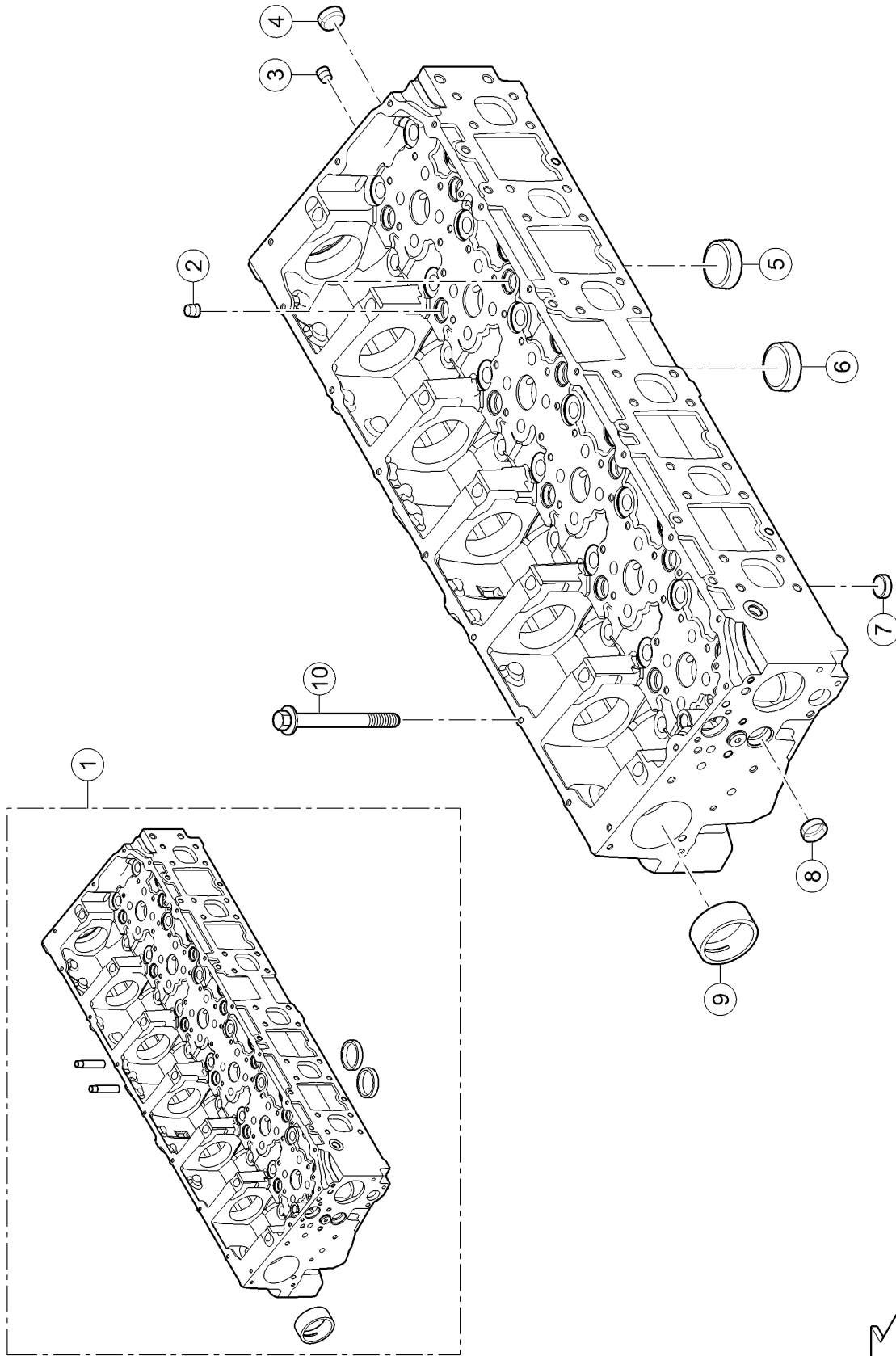
180 CRANKSHAFT DAMPER

Pos.	Part No.	Description	Dimension	Quantity	Conditions
1	00 1160 225 0	TORSION DAMPER		1	
2	00 1143 623 0	SCREW	M12X30-U-S4-S -M.FL.SCHE	6	
3	00 1143 622 0	WASHER		6	



220 FLYWHEEL

Pos.	Part No.	Description	Dimension	Quantity	Conditions
1	00 1160 226 0	FLYWHEEL		1	
2	00 1143 452 0	SCREW		8	



100 CYLINDER HEAD

Pos.	Part No.	Description	Dimension	Quantity	Conditions
1	00 1150 672 0	CYLINDER HEAD		1	
2	00 1143 688 0	PLUG	Ø 25	12	
3	00 1143 689 0	PLUG	Ø 1/4"	2	
4	60 0502 563 1	PLUG	Ø 28	2	
5	60 0502 562 9	PLUG	Ø 45	2	
6	60 0502 538 1	LOCK	Ø 36	6	
7	60 0502 563 0	LOCK	Ø 20	6	
8	60 0502 563 1	PLUG	Ø 28	2	
9	00 1143 690 0	BEARING BUSH		7	
10	00 1143 952 0	SCREW	M16X170	26	
11	00 1161 767 0	COVER		3	
12	00 1143 688 0	PLUG	Ø 25	12	



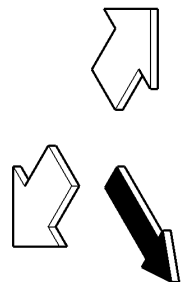
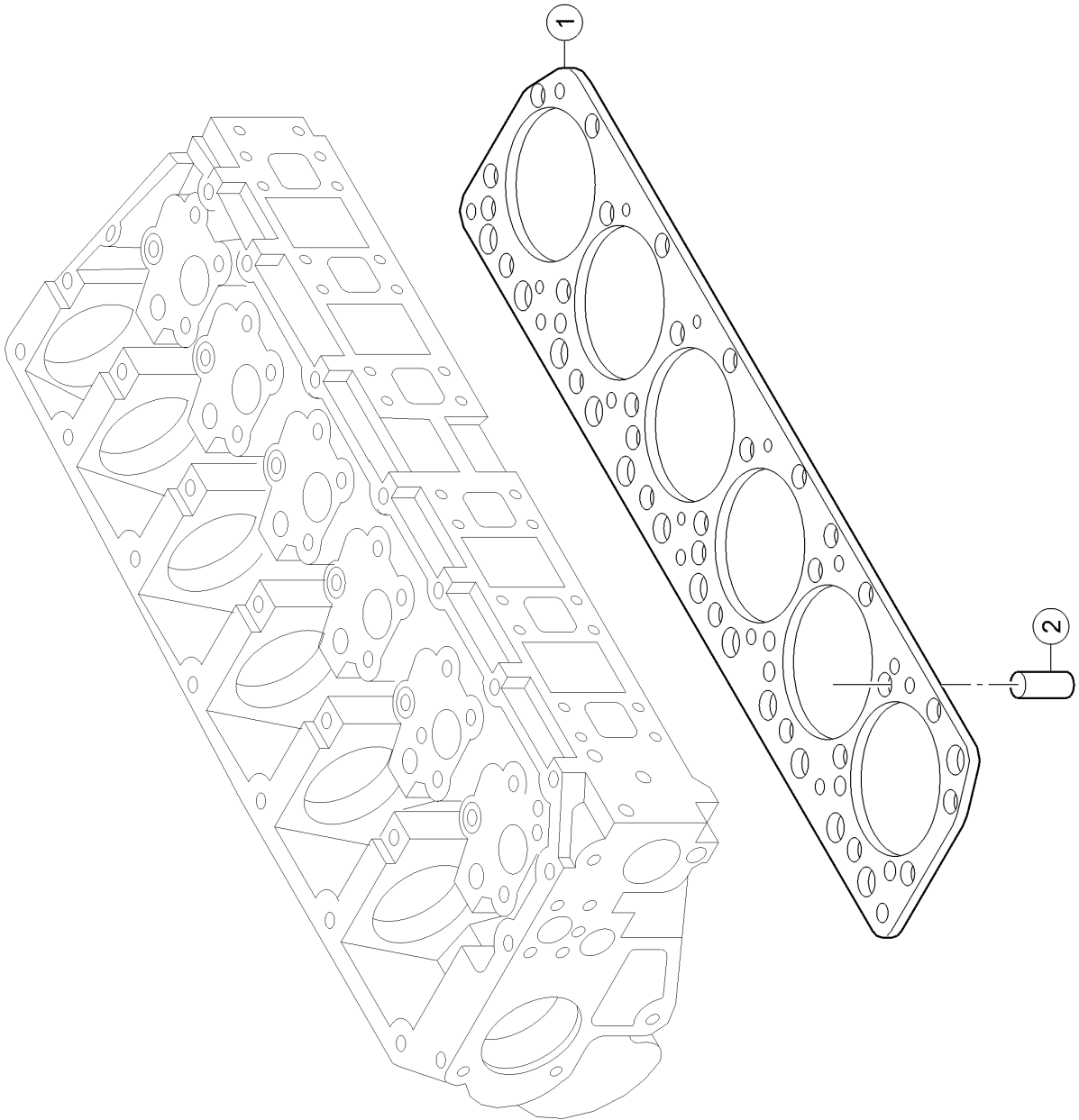
Suggest:

For more complete manuals. Please go to the home page.

<https://www.ebooklibonline.com>

If the above button click is invalid. Please download this document first, and then click the above link to download the complete manual.

Thank you so much for reading



100 CYLINDER HEAD

Pos.	Part No.	Description	Dimension	Quantity	Conditions
1	00 1145 114 0	CYLINDER HEAD GASKET		1	
2	00 1143 982 0	CENTRING PIN		2	

<https://www.ebooklibonline.com>

Hello dear friend!

Thank you very much for reading.

Enter the link into your browser.

The full manual is available for immediate download.

<https://www.ebooklibonline.com>