

010 COMPLETE ENGINE

Pos.	Part No.	Description	Dimension	Quantity	Conditions
1	00 2675 615 2	ENGINE	5802840718 MAX ECER120	1	1)
2	00 2675 622 2	ENGINE	5802840722 MAX ECER120	1	2)
3	00 2675 627 2	ENGINE	5802840728 MAX ECER120	1	3)
4	00 2675 631 2	ENGINE	5802840732 MAX ECER120	1	4)
5	00 2675 639 2	ENGINE	5802840734 MAX ECER120	1	5)
6	00 2675 646 1	ENGINE	5802741688XZ MAX ECER120	1	6)
7	00 2675 784 1	ENGINE	5802741694XZ MAX ECER120	1	7)
8	00 2675 790 1	ENGINE	5802741701XZ MAX ECER120	1	8)
9	00 2675 798 2	ENGINE	5802840736 MAX ECER120	1	9)
10	00 2675 800 2	ENGINE	5802840738 MAX ECER120	1	10)
11	00 2675 802 2	ENGINE	5802840741 MAX ECER120	1	11)
12	00 2675 806 2	ENGINE	5802840744 MAX ECER120	1	12)
13	00 2675 810 2	ENGINE	5802840746 MAX ECER120	1	13)
14	00 2707 287 1	ENGINE	5802698010 XZ	1	14)
15	00 2707 290 1	ENGINE	5802698009 XZ	1	15)
16	00 2707 296 1	ENGINE	5802697643 XZ	1	16)
17	00 2707 782 1	ENGINE	5802698018 XZ AVEC CMPR	1	17)
18	00 2707 784 1	ENGINE	5802698017 XZ AVEC CMPR	1	18)
19	00 2707 785 1	ENGINE	5802556962 XZ AVEC CMPR	1	19)
20	00 2704 463 1	ENGINE	5802559405 XZ	1	20)
21	00 2707 768 1	ENGINE	5802697645 XZ AVEC CMPR	1	21)

1) Equipment

TJ_P16_0642

Without air compressor

2) Equipment

TJ_P16_0643

Without air compressor

3) Equipment

TJ_P16_0644

Without air compressor

4) Equipment

TJ_P16_0645

Without air compressor

5) Equipment

TJ_P16_0646

Without air compressor

6) Equipment

TJ_P16_0662

2-cylinder air compressor

7) Equipment

TJ_P16_0665

0665_Comp. 2cyl(eng 308kw)

8) Equipment

TJ_P16_0666

2-cylinder air compressor

9) Equipment

TJ_P16_0672

Air compressor with air drier

10) Equipment

TJ_P16_0673

Air compressor with air drier

010 COMPLETE ENGINE

11) Equipment	TJ_P16_0674	Air compressor with air drier
12) Equipment	TJ_P16_0675	Air compressor with air drier
13) Equipment	TJ_P16_0676	Air compressor with air drier
14) Equipment	TJ_P16_0648	0648_W/o comp.(eng 265kw)
15) Equipment	TJ_P16_0649	0649_W/o comp.(eng 290kw)
16) Equipment	TJ_P16_0650	0650_W/o comp.(eng 308kw)
17) Equipment	TJ_P16_0678	0678_Comp. 1cyl (eng 265kw)
18) Equipment	TJ_P16_0679	0679_Comp. 1cyl (eng 290kw)
19) Equipment	TJ_P16_0680	0680_Comp. 1cyl (eng 308kw)
20) Equipment	TJ_P16_0647	0647_W/o comp.(eng 240kw)
21) Equipment	TJ_P16_0677	0677_Comp. 1cyl (eng 240kw)

<https://www.ebooklibonline.com>

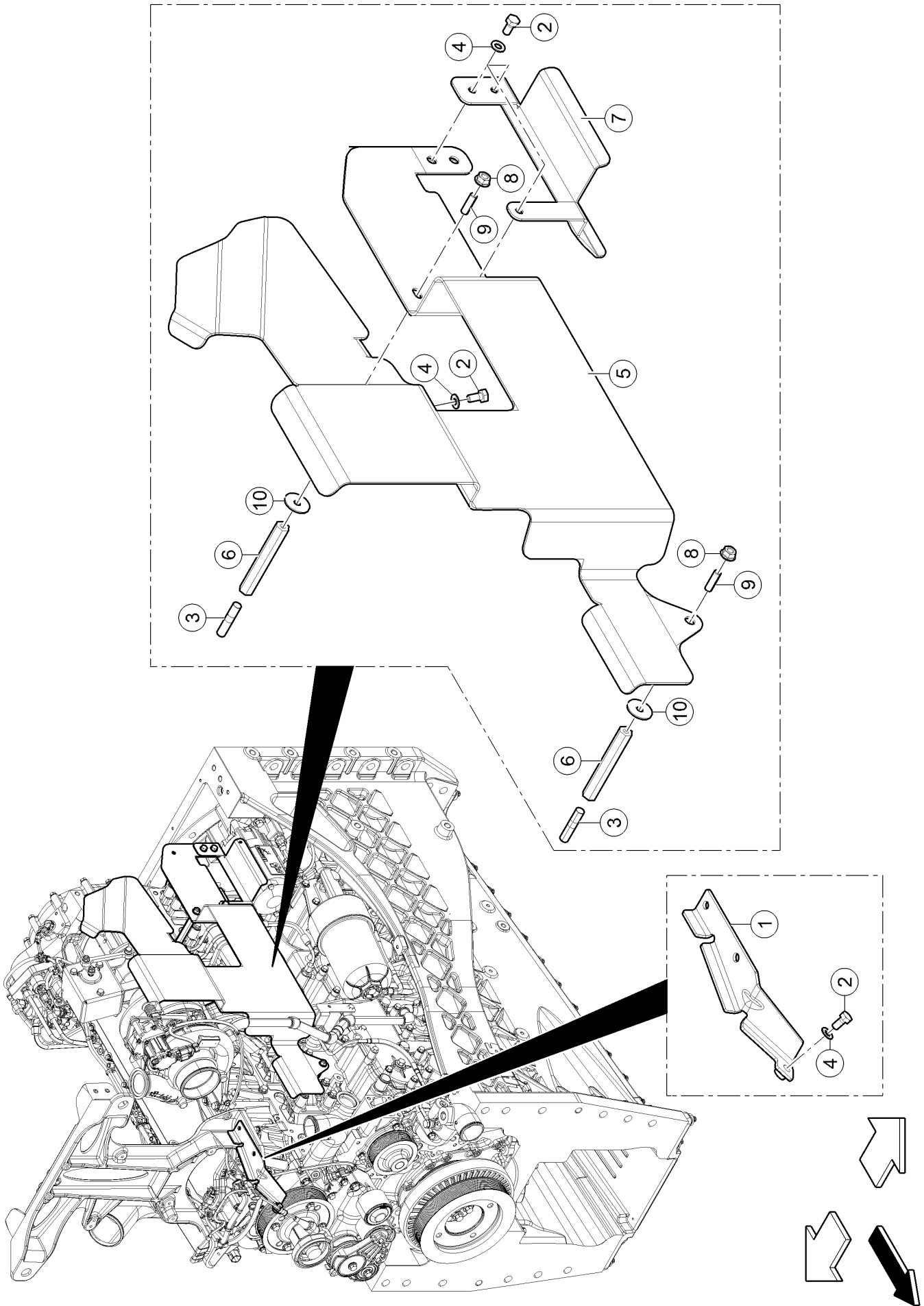
Hello dear friend!

Thank you very much for reading.

Enter the link into your browser.

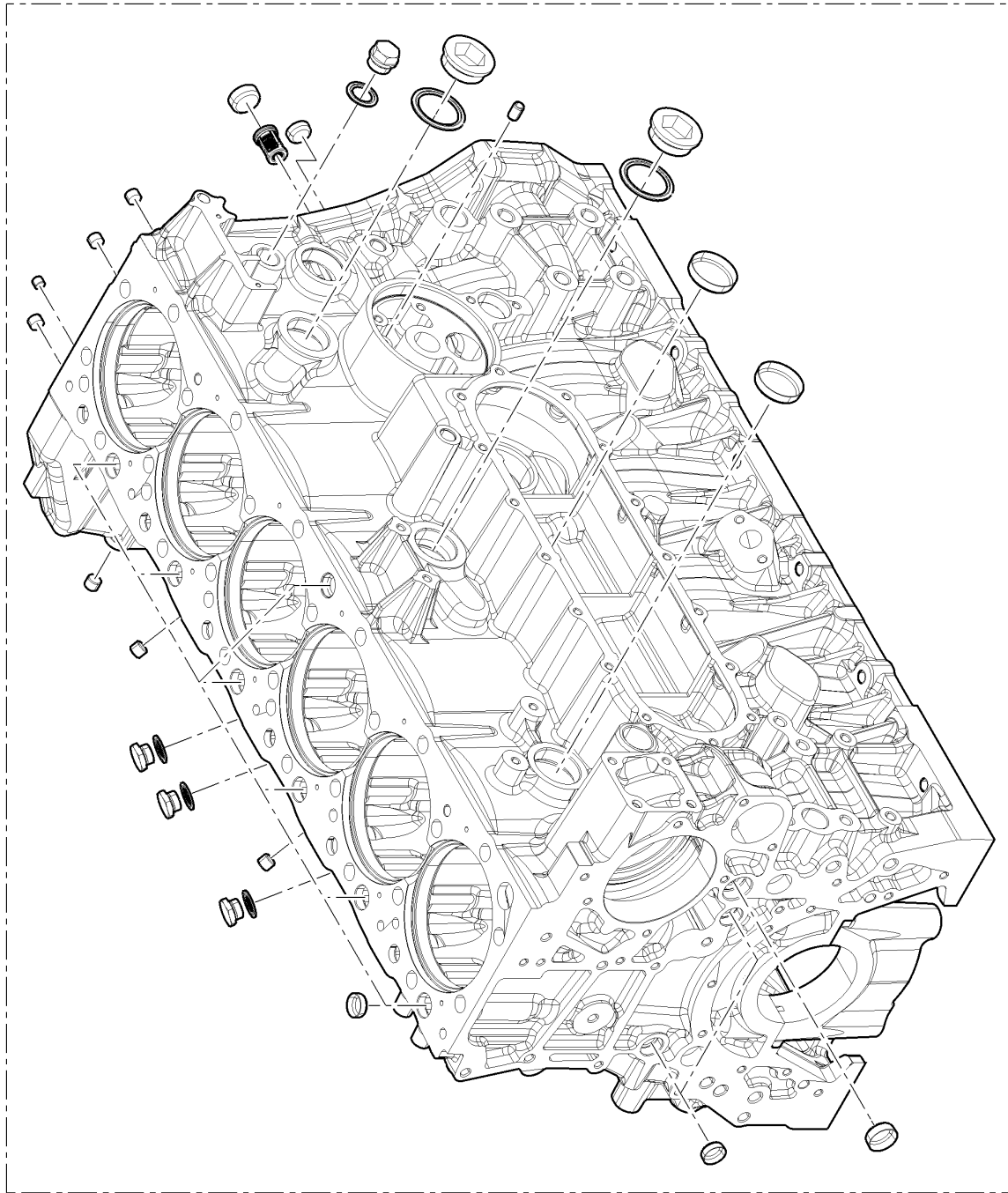
The full manual is available for immediate download.

<https://www.ebooklibonline.com>



010 COMPLETE ENGINE

Pos.	Part No.	Description	Dimension	Quantity	Conditions
1	00 2709 199 0	STRAP	MAINTIEN CABLAGE	1	
2	00 0367 906 0	HEXAGON HEAD BOLT	M08X16	5	
3	77 0302 714 2	STUD BOLT	M10X30-BM15	2	
4	00 0236 912 2	FLAT WASHER	ERS.D.107060	5	
5	00 2672 189 0	PROTECTOR	8 - 8,4X16X1,6	1	
6	00 2195 472 1	SPACER	PROTECTEUR THERMIQUE	2	
7	00 2195 578 1	PROTECTOR		1	
8	00 0216 721 0	NUT	M 8	2	
9	00 2165 743 0	STUD		2	
10	00 1070 812 1	FLAT WASHER	8-8,4X30X2	2	

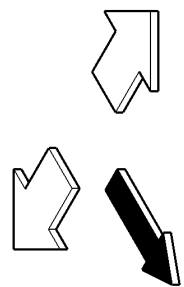
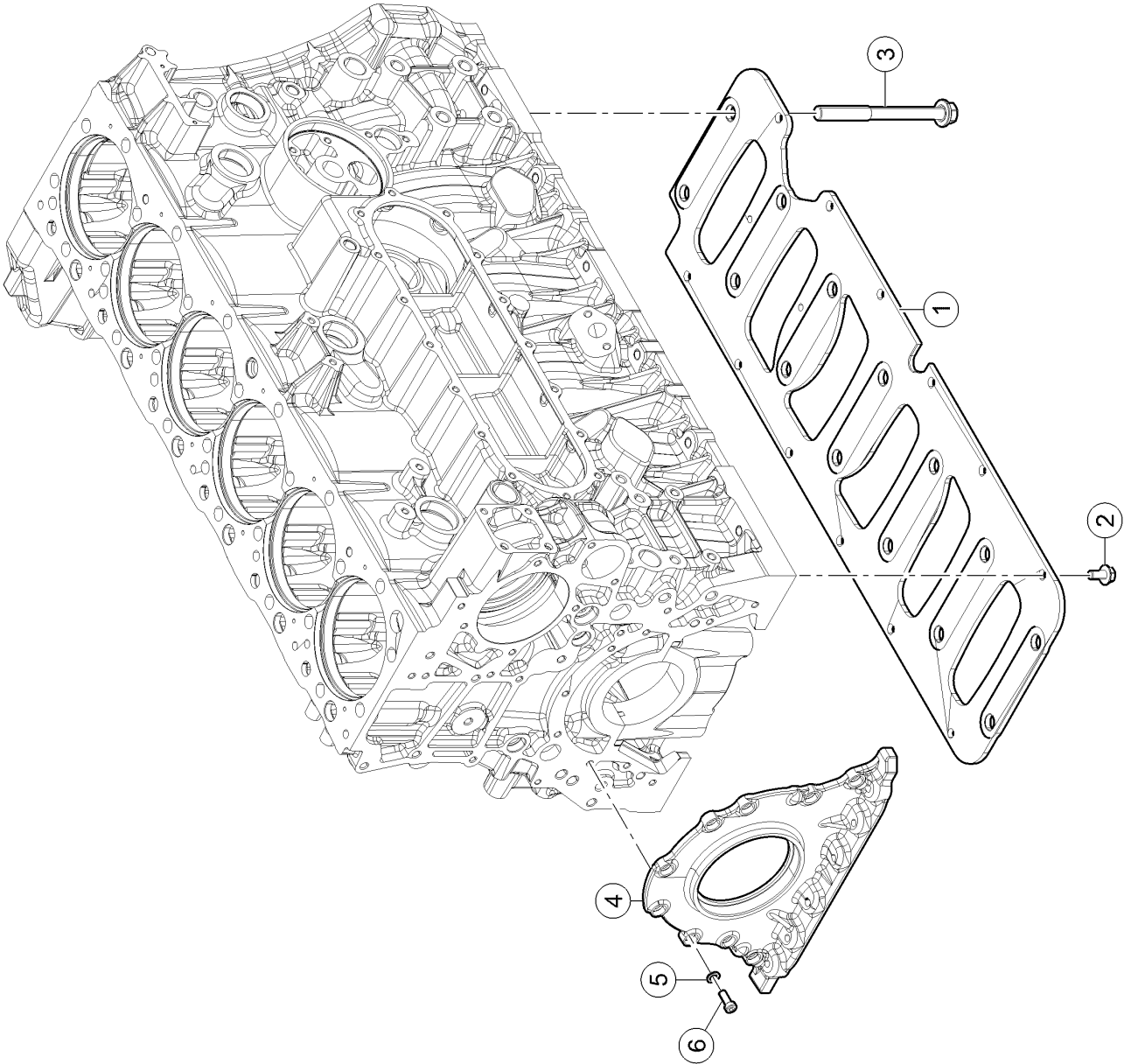


1



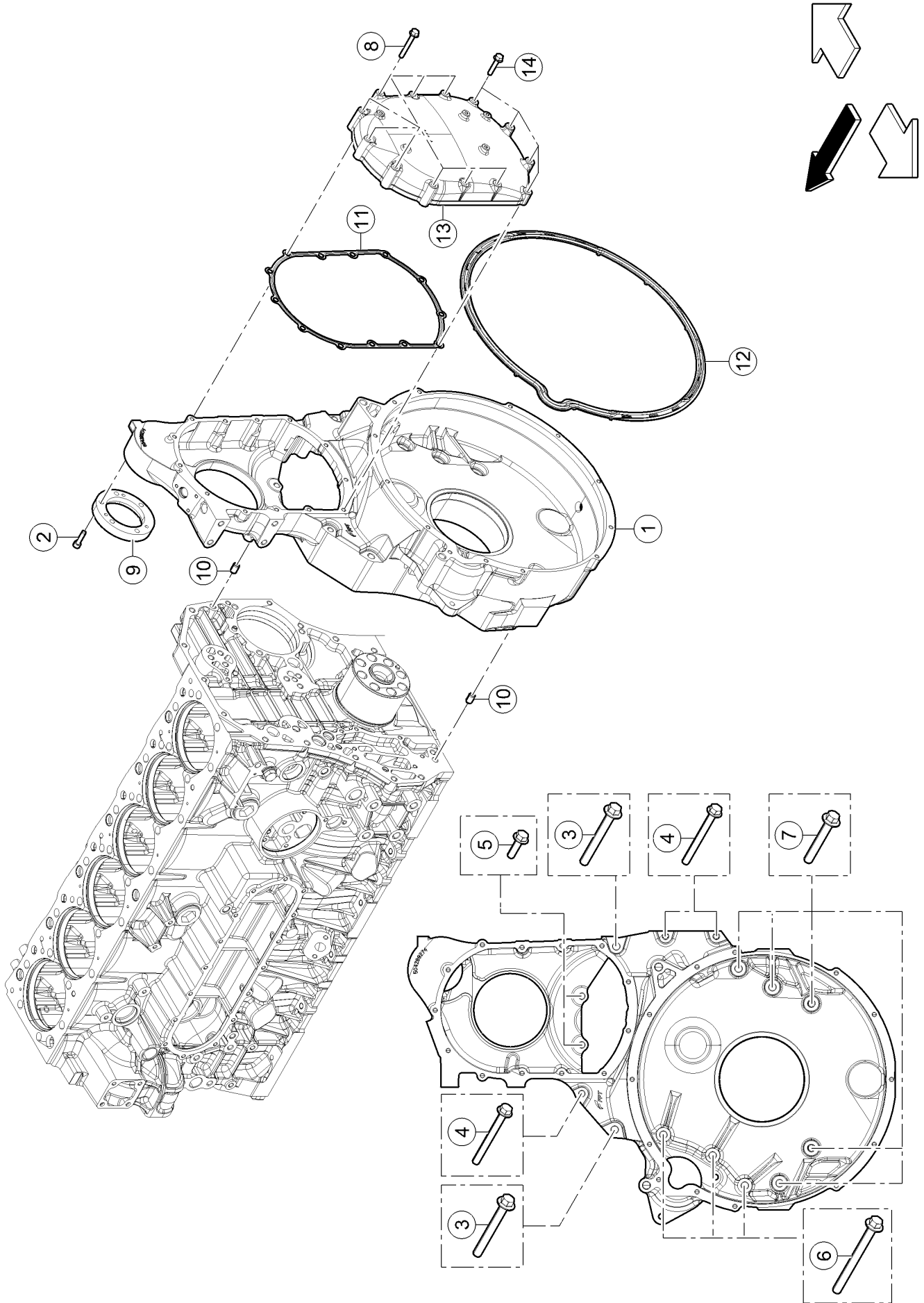
100 CRANKCASE

Pos.	Part No.	Description	Dimension	Quantity	Conditions
1	00 1143 130 0	CASING		1	



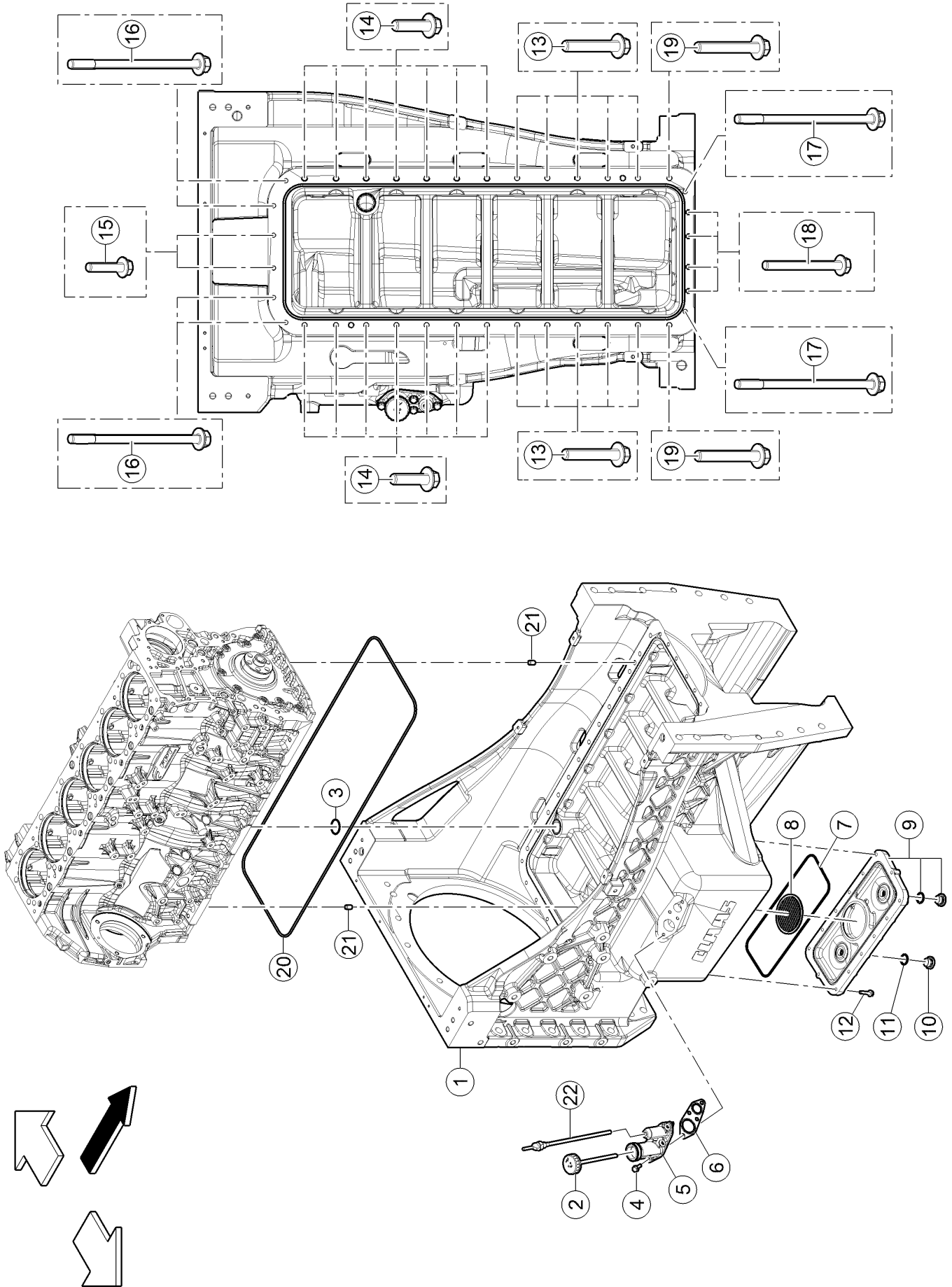
100 CRANKCASE

Pos.	Part No.	Description	Dimension	Quantity	Conditions
1	00 1170 629 0	PANEL		1	
2	00 1170 630 0	SCREW		12	
3	00 1144 005 0	SCREW		14	
4	00 1170 631 0	COVER		1	
5	00 1144 007 0	WASHER		9	
6	00 1144 008 0	SCREW		9	



120 TIMING CASE

Pos.	Part No.	Description	Dimension	Quantity	Conditions
1	00 1143 461 0	CASING		1	
2	00 1143 472 0	SCREW	M8X30	5	
3	00 1143 462 0	SCREW		2	
4	00 1143 464 0	SCREW		3	
5	00 1143 463 0	SCREW		2	
6	00 1143 465 0	SCREW		3	
7	00 1160 183 0	SCREW		5	
8	00 1140 679 0	SCREW		9	
9	00 1143 473 0	FLANGE		1	
10	00 1143 469 0	CENTRING PIN		2	
11	00 1143 466 0	FLAT SEAL		1	
12	00 1143 471 0	FLAT SEAL		1	
13	00 1160 182 0	COVER		1	
14	00 1140 887 0	SCREW		4	



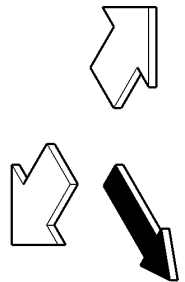
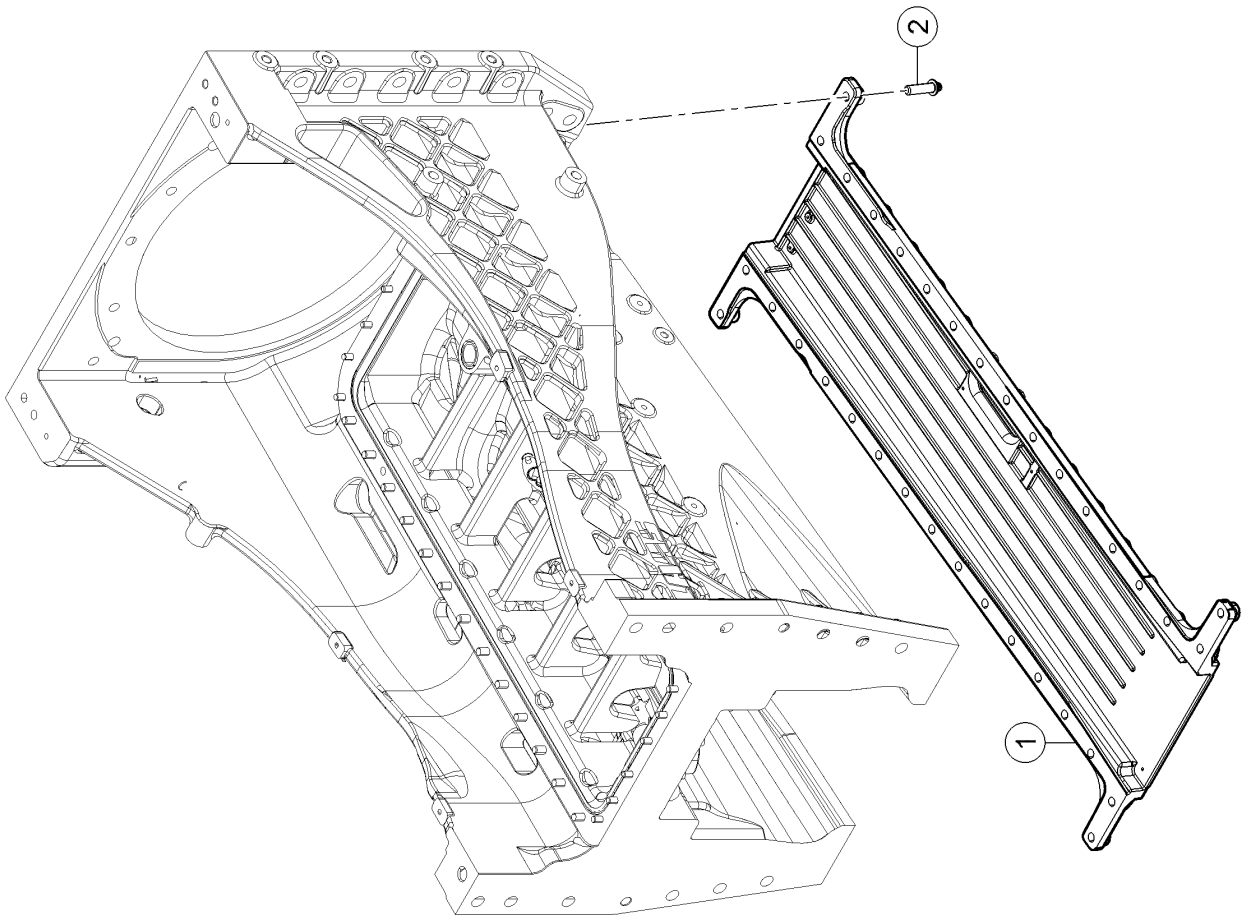
160 OIL PAN

Pos.	Part No.	Description	Dimension	Quantity	Conditions
1	00 1160 189 1	CRANKCASE		1	
2	00 1143 168 0	PLUG		1	
3	00 1143 169 0	O-RING		1	
4	00 1139 409 0	SCREW		4	
5	00 1143 170 0	TUBE		1	
6	00 1143 171 0	FLAT SEAL		1	
7	00 1143 173 0	FLAT SEAL		1	
8	00 1143 174 0	SEALING RING		1	
9	00 1143 175 0	CASING		1	
10	00 1143 177 0	PLUG		2	
11	77 0102 690 5	O-RING	23,47X2,62 NBR 80 SH	2	
12	00 1143 178 0	SCREW	M08X35	14	
13	00 1143 179 0	SCREW		10	
14	00 1143 180 0	SCREW		14	
15	00 1143 181 0	SCREW		2	
16	00 1143 182 0	SCREW		4	
17	00 1143 188 0	SCREW		1	
18	00 1143 189 0	SCREW		4	
19	00 1160 183 0	SCREW		2	
20	00 1157 268 0	O-RING		1	
21	00 1143 194 0	CENTRING PIN		2	
22	00 1143 353 0	SENSOR		1	1)

1) CCN

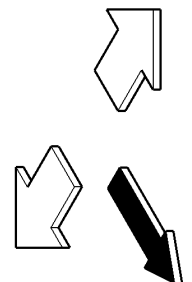
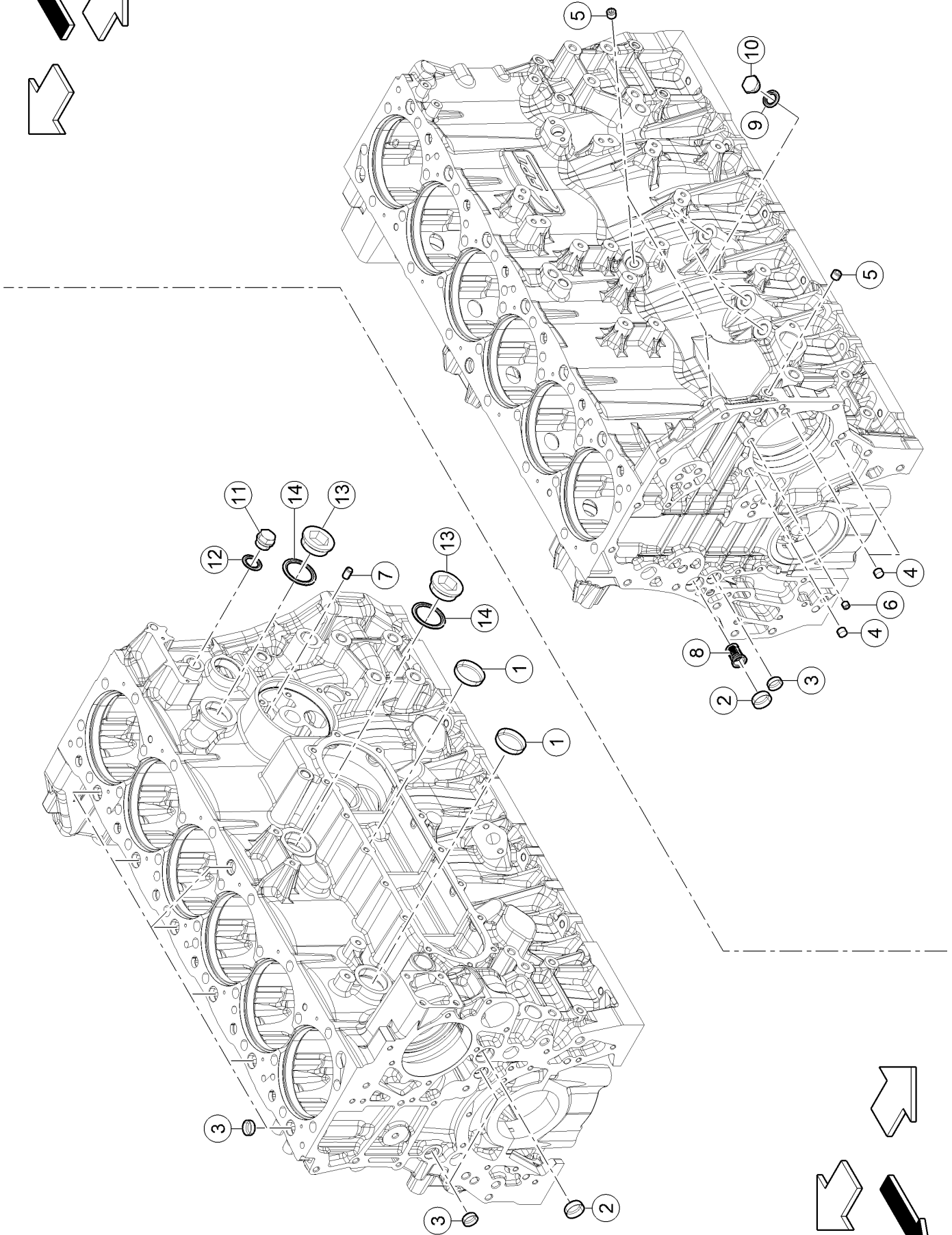
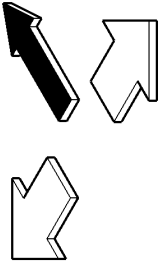
CCN-B052

engine oil level sensor



160 OIL PAN

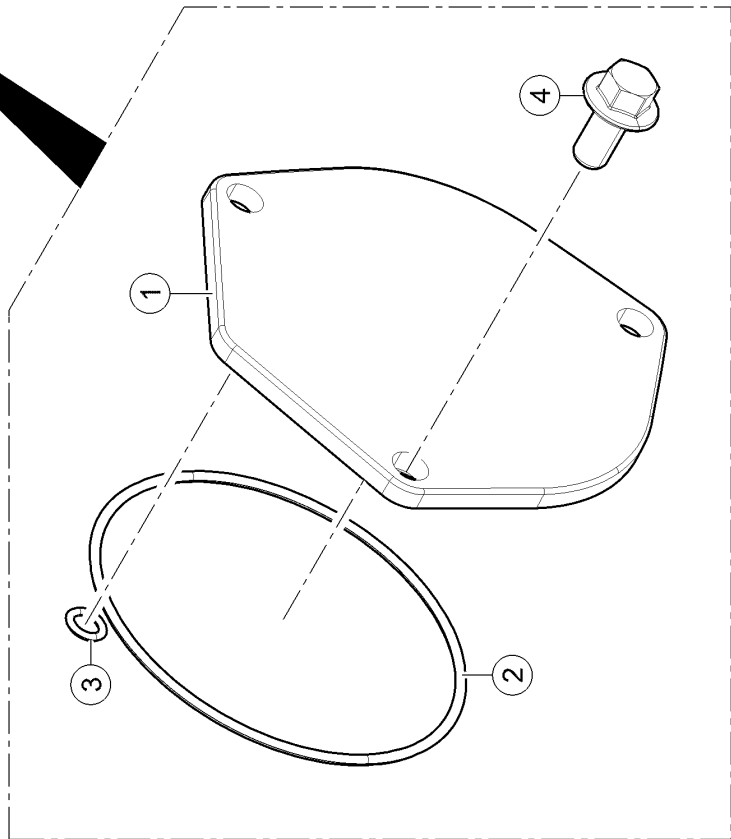
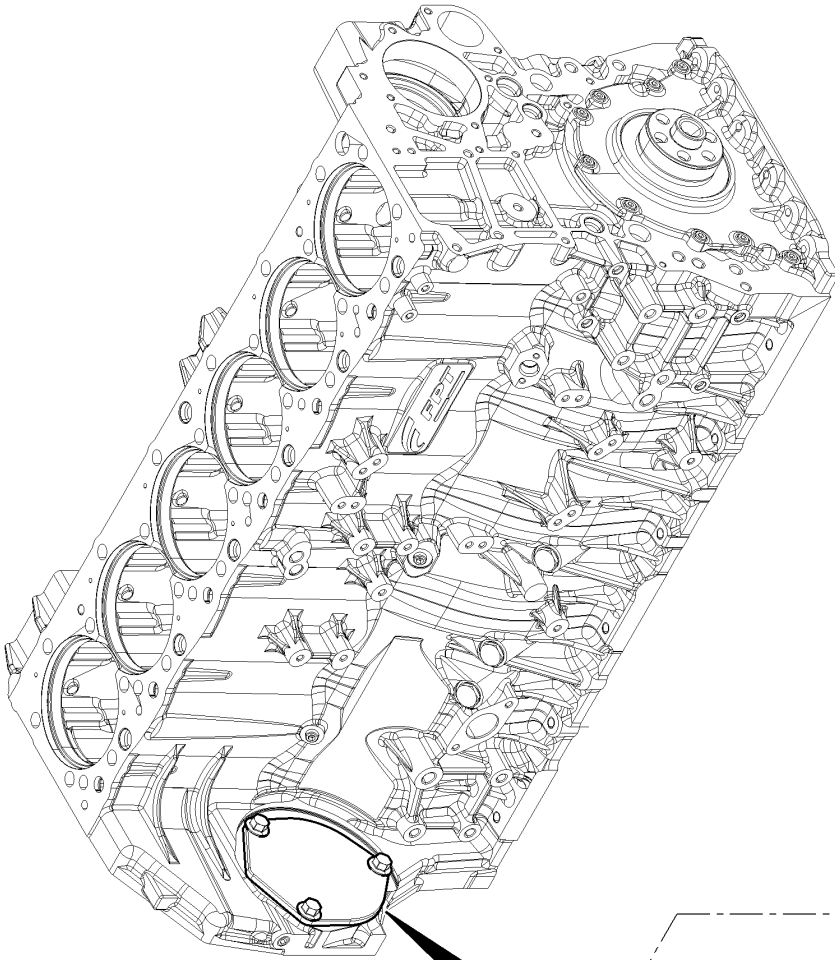
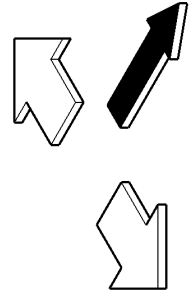
Pos.	Part No.	Description	Dimension	Quantity	Conditions
1	00 2153 088 3	PLATE	SOUS CUVETTE	1	
2	00 2155 900 0	DODECAGON BOLT W.FLANGE	M14X50	34	



180 PLUGS

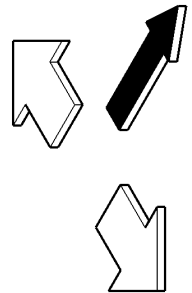
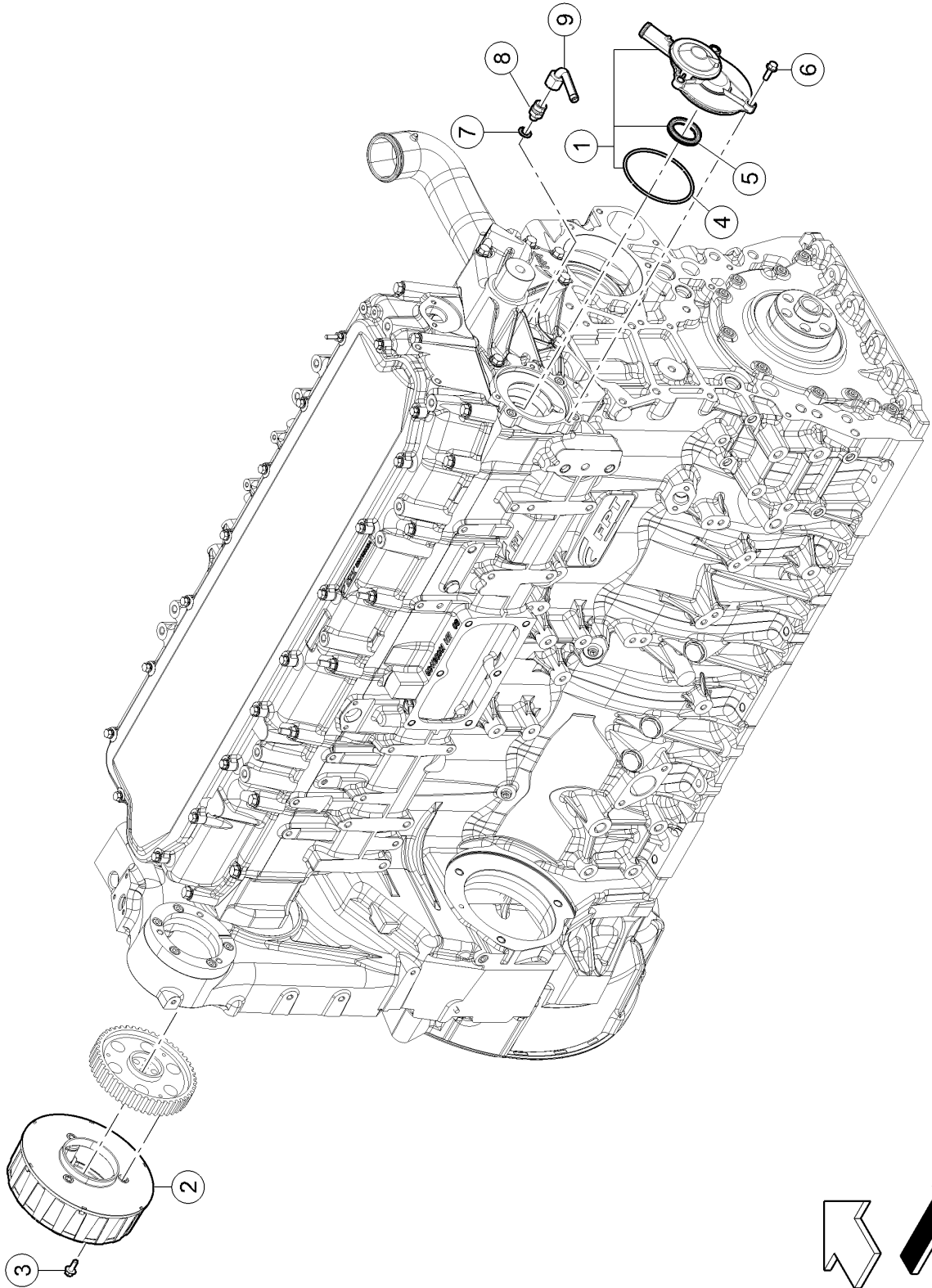
Pos.	Part No.	Description	Dimension	Quantity	Conditions
1	60 0502 562 9	PLUG	Ø 45	2	1)
2	60 0502 563 1	PLUG	Ø 28	3	2)
3	00 1143 979 0	PLUG		10	3)
4	00 1143 978 0	PLUG		3	4)
5	00 1143 689 0	PLUG	Ø 1/4"	3	5)
6	00 1139 396 0	PLUG		1	6)
7	00 1143 982 0	CENTRING PIN		1	7)
8	00 1170 266 0	VALVE		1	
9	00 1170 272 0	SEAL		3	
10	00 1143 983 0	PLUG		3	8)
11	00 1160 185 0	SCREW		1	9)
12	00 1140 744 0	SEALING RING		1	
13	60 0502 537 9	LOCK		2	10)
14	00 1161 121 0	GASKET		2	

1)	Remarks	Ø 45 mm
2)	Remarks	Ø 28 mm
3)	Remarks	Ø 22 mm
4)	Remarks	Ø 12 mm
5)	Remarks	Ø 1/4"
6)	Remarks	Ø 1/8"
7)	Remarks	Ø 10 mm
8)	Remarks	M18x1,5
9)	Remarks	M22x1,5
10)	Remarks	M42x1.5



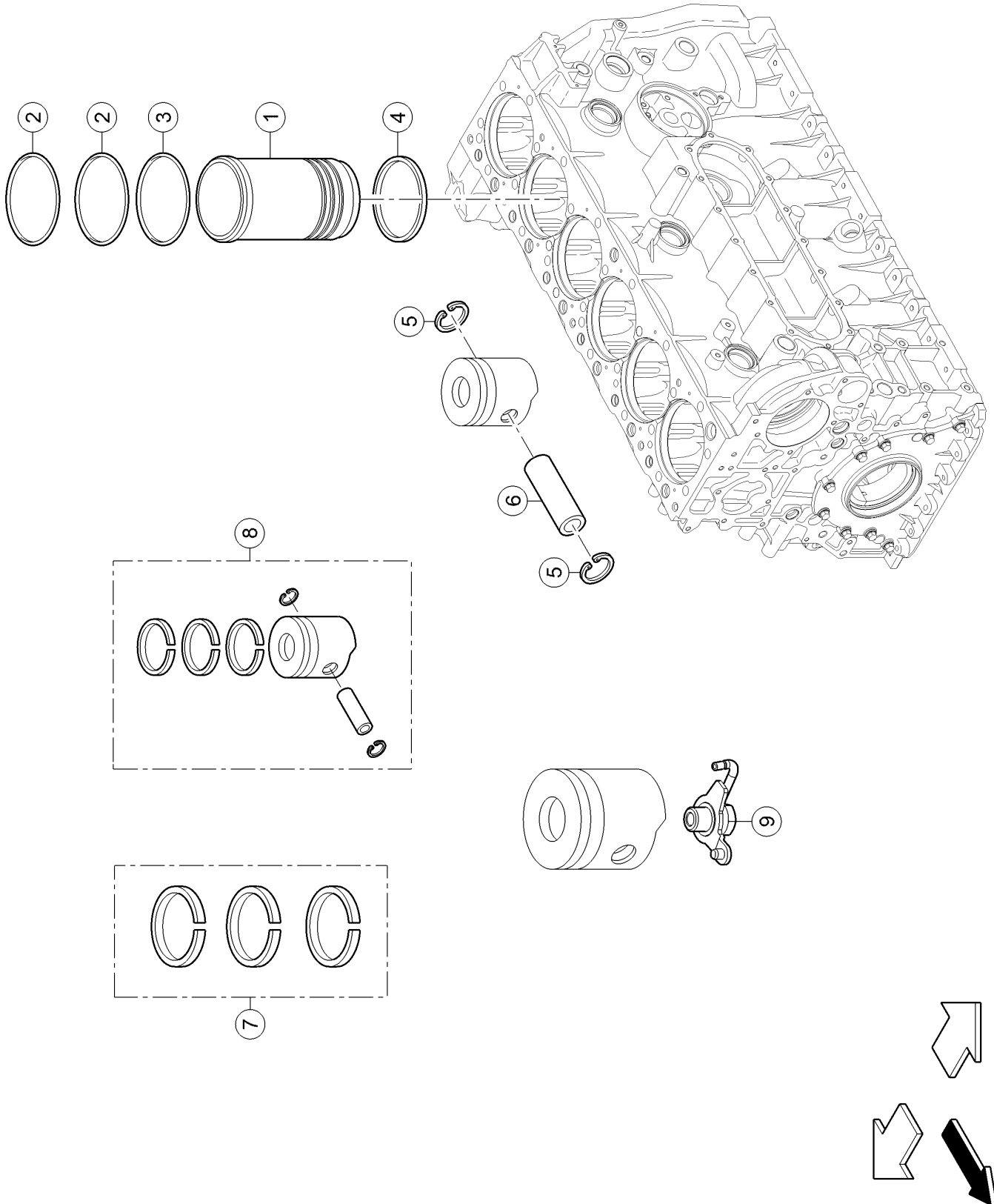
180 PLUGS

Pos.	Part No.	Description	Dimension	Quantity	Conditions
1	00 1144 671 0	PLATE		1	1)
2	00 1144 674 0	O-RING		1	1)
3	00 1144 672 0	O-RING		1	1)
4	00 1144 670 0	SCREW		3	1)
1) Equipment					
		TJ_J40_0000			Without trailer brake system
		TJ_J40_0130			Hydraulic brakes without air brakes



200 CRANK CASE BREATHER

Pos.	Part No.	Description	Dimension	Quantity	Conditions
1	00 1144 495 0	BREATHER		1	
2	00 1160 196 0	OIL VAPOUR FILTER		1	
3	00 1140 737 0	HEXAGON HEAD BOLT	M6X16	3	
4	00 1144 497 0	O-RING		1	
5	00 1144 498 0	SEALING RING		1	
6	00 1144 071 0	SCREW	M06X20	3	
7	00 1145 280 0	SEALING RING		1	
8	00 1145 281 0	UNION CONNECTOR		1	
9	00 1145 282 0	TUBE		1	



100 CYLINDER LINER, PISTON

Pos.	Part No.	Description	Dimension	Quantity	Conditions
1	00 1160 074 0	LINER		6	
2	00 1143 544 0	O-RING		12	1)
3	00 1143 545 0	O-RING		6	1)
4	00 1143 546 0	ADJUSTING DISC		6	2)
4	00 1143 548 0	ADJUSTING DISC		6	3)
4	00 1143 549 0	ADJUSTING DISC		6	4)
4	00 1143 550 0	ADJUSTING DISC		6	5)
5	00 1143 551 0	INT RETAINING RING		12	
6	00 1143 552 0	AXLE		6	
7	00 1160 211 0	SET OF PISTON RINGS		6	
8	00 1160 212 0	ENGINE PISTON		6	
9	00 1160 755 0	NOZZLE		6	

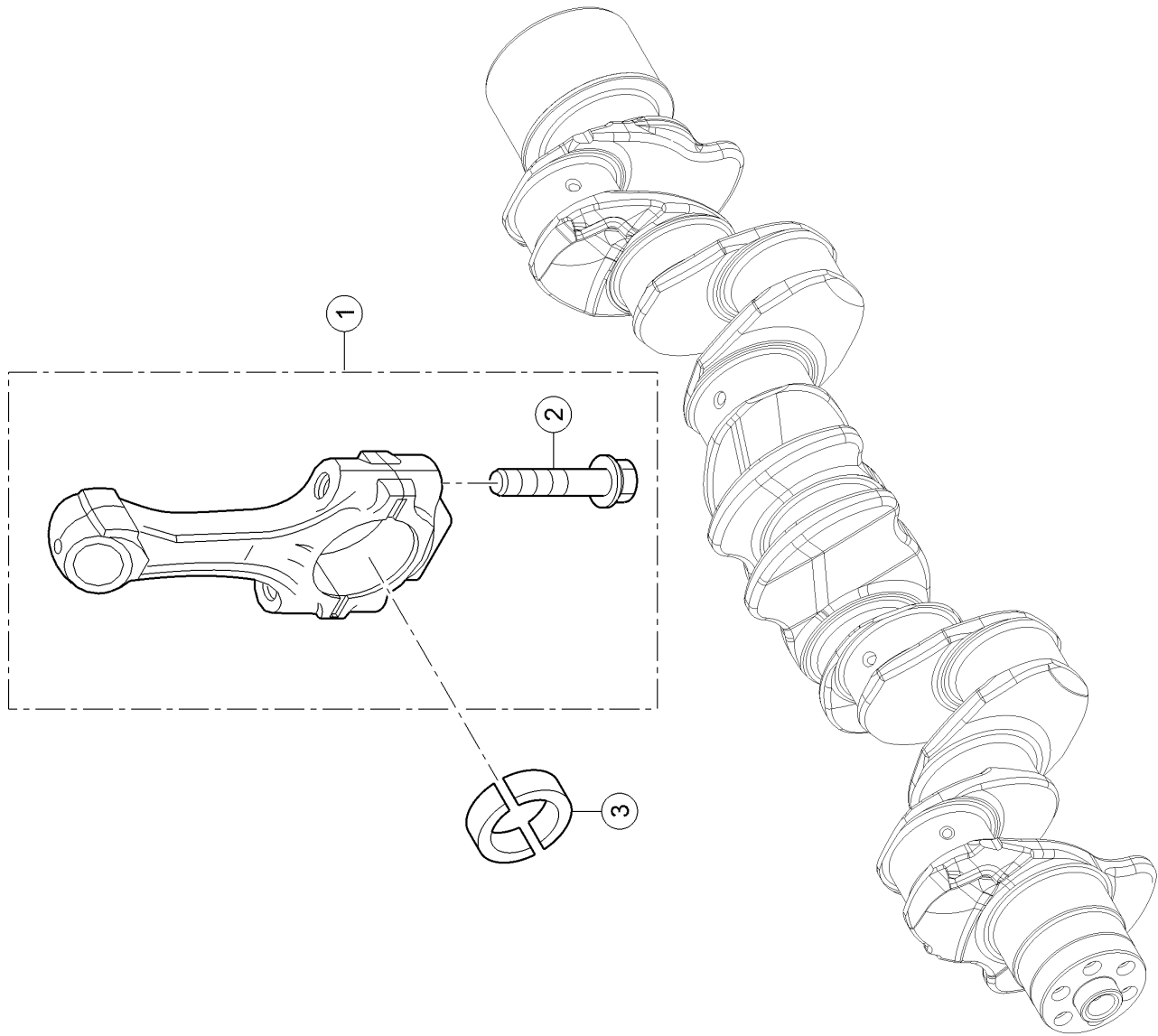
1) Remarks	Dia 120,24 ep 3,53mm
-------------------	----------------------

2) Remarks	ep = 0,08mm
-------------------	-------------

3) Remarks	ep = 0,10 mm
-------------------	--------------

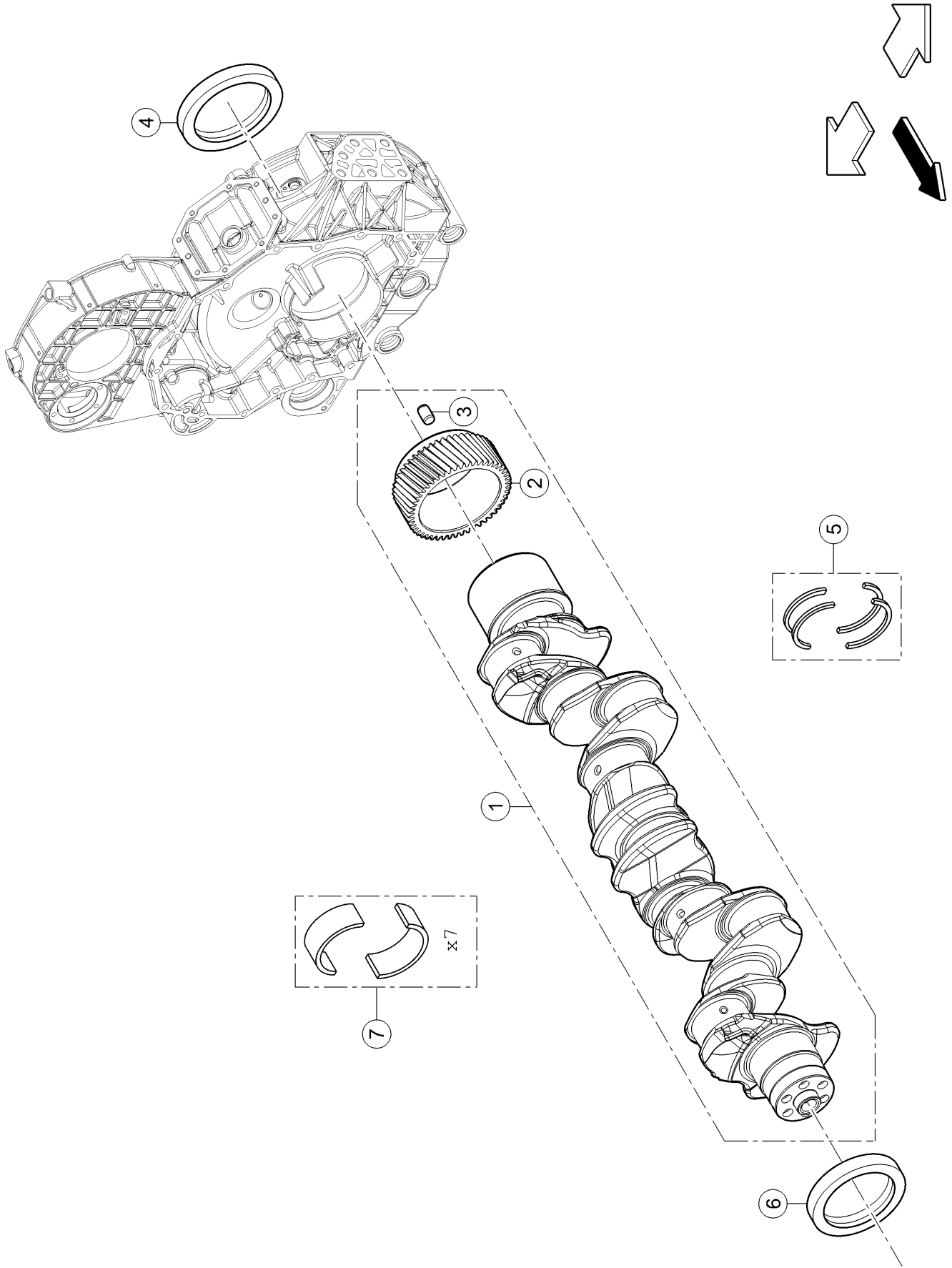
4) Remarks	ep = 0,12 mm
-------------------	--------------

5) Remarks	ep = 0,14 mm
-------------------	--------------



120 CONNECTING ROD, CONNECTING ROD BEARINGS

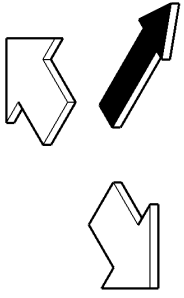
Pos.	Part No.	Description	Dimension	Quantity	Conditions
1	00 1155 870 0	ROD (ENGINE)		6	
2	00 1143 611 0	SCREW		12	
3	00 1148 092 0	SET OF BEARING BUSHES		6	1)
3	00 1148 093 0	SET OF BEARING BUSHES		6	2)
3	00 1148 094 0	SET OF BEARING BUSHES		6	3)
3	00 1148 095 0	SET OF BEARING BUSHES		6	4)
3	00 1148 096 0	SET OF BEARING BUSHES		6	5)
3	00 1148 097 0	SET OF BEARING BUSHES		6	6)
3	00 1148 098 0	SET OF BEARING BUSHES		6	7)
3	00 1148 099 0	SET OF BEARING BUSHES		6	8)
1)	Remarks		rouge standard		
2)	Remarks		vert standard		
3)	Remarks		rouge noir -0,127 mm		
4)	Remarks		vert noir -0,127 mm		
5)	Remarks		rouge - 0,254 mm		
6)	Remarks		vert -0,254 mm		
7)	Remarks		rouge -0,508 mm		
8)	Remarks		vert -0,508 mm		



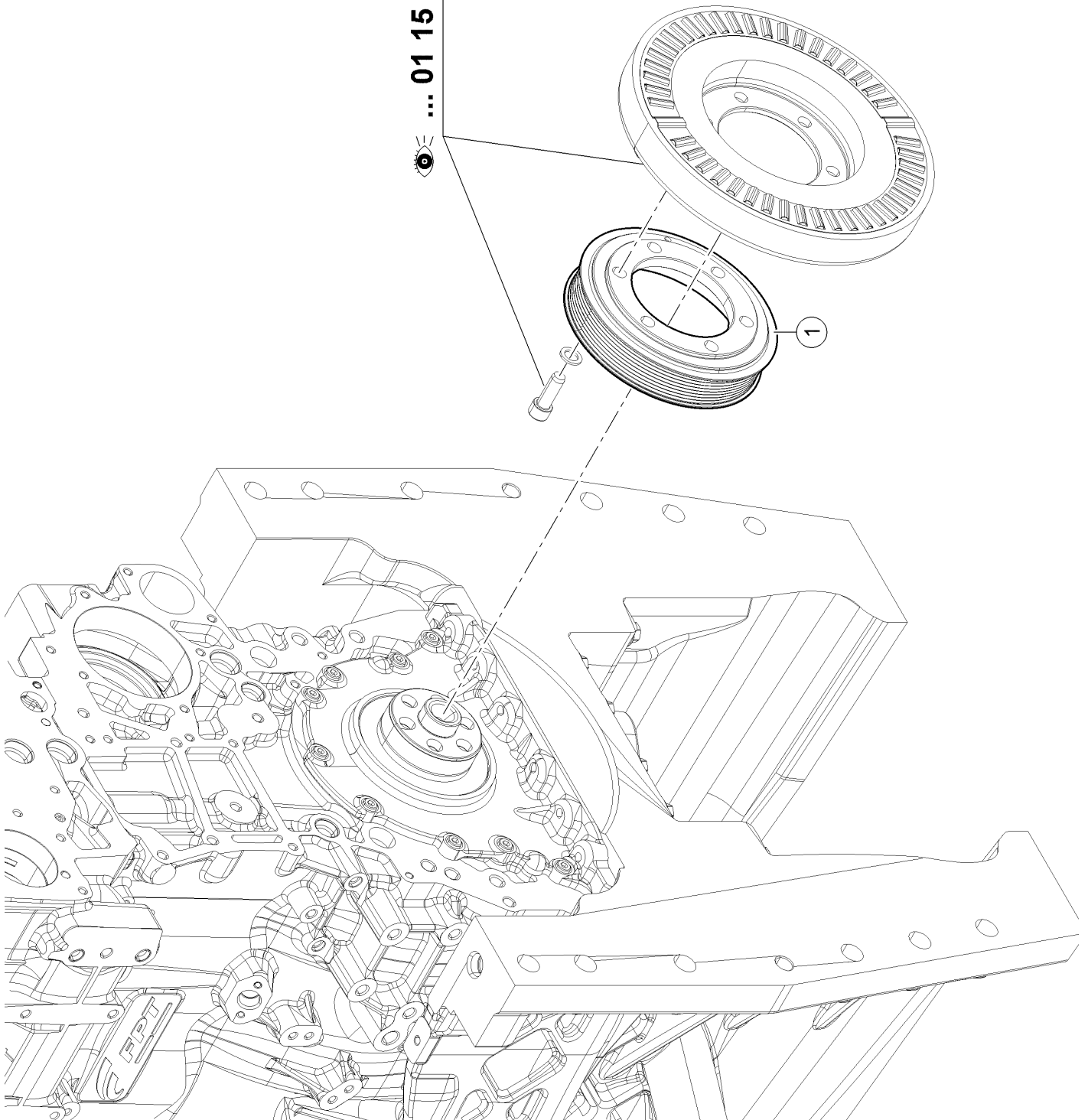
140 CRANKSHAFT

Pos.	Part No.	Description	Dimension	Quantity	Conditions
1	00 1143 202 0	CRANKSHAFT		1	
2	00 1155 902 0	GEAR		1	
3	60 0502 560 7	PIN		1	
4	00 1171 258 0	SEAL		1	
5	00 1143 205 0	CHOCK		1	
6	00 1170 663 0	SEAL		1	
7	00 1160 214 0	SET OF BEARING BUSHES		1	1)
7	00 1160 215 0	SET OF BEARING BUSHES		1	2)
7	00 1160 216 0	SET OF BEARING BUSHES		1	3)
7	00 1160 217 0	SET OF BEARING BUSHES		1	4)

1) Remarks	ROUGE .STD
2) Remarks	VERT .STD
3) Remarks	ROUGE NOIR . -0,127
4) Remarks	VERT NOIR . -0,127

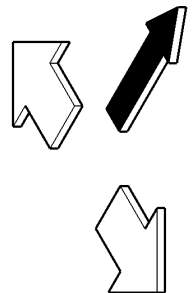
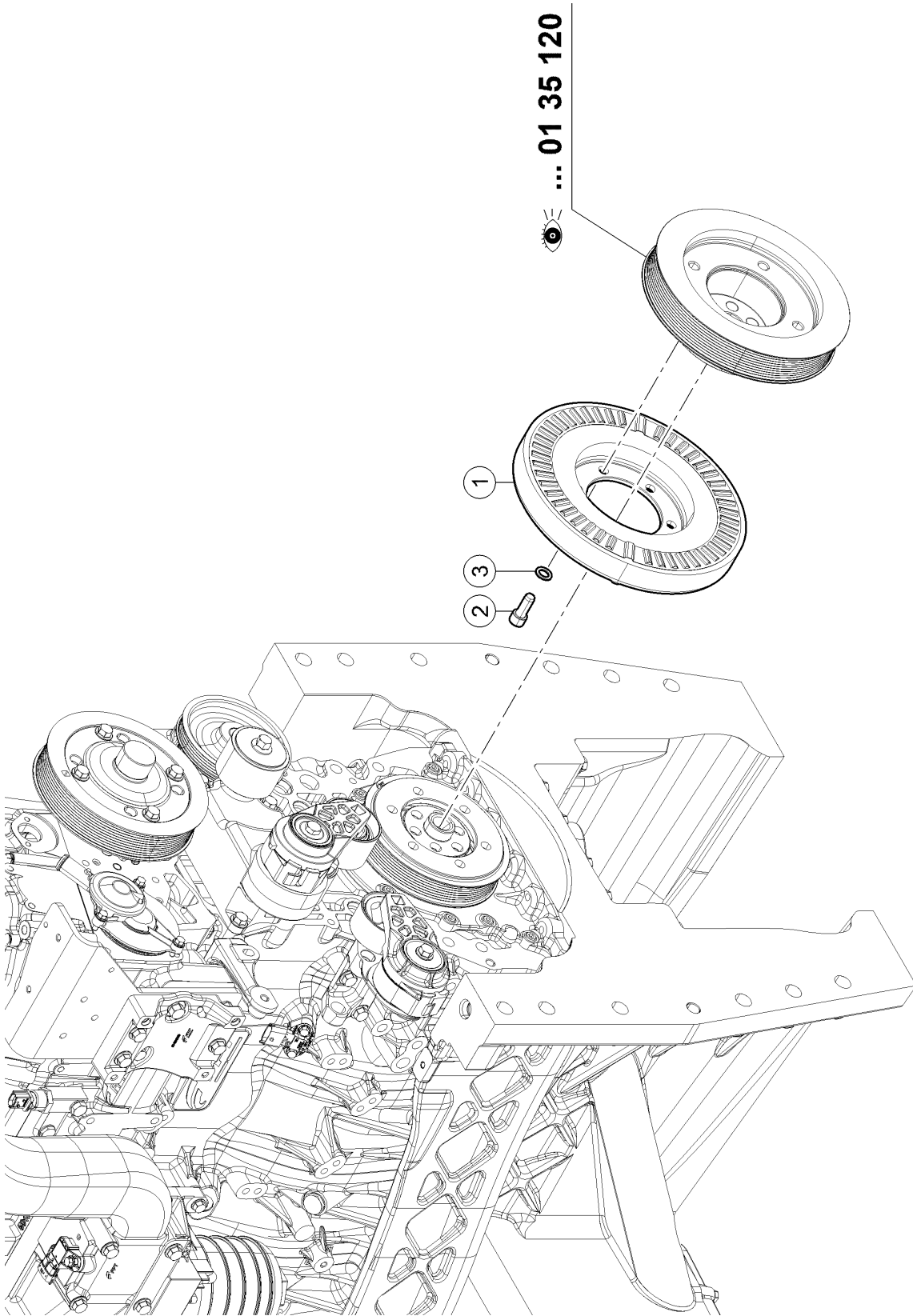


👁 ... 01 15 180



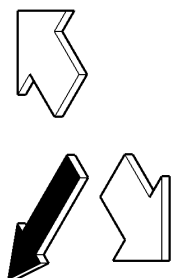
160 CRANKSHAFT PULLEY WHEEL

Pos.	Part No.	Description	Dimension	Quantity	Conditions
1	00 1172 376 0	PULLEY		1	



180 CRANKSHAFT DAMPER

Pos.	Part No.	Description	Dimension	Quantity	Conditions
1	00 1170 664 0	TORSION DAMPER		1	
2	00 1172 348 0	SCREW		6	
3	00 1143 622 0	WASHER		6	





Suggest:

For more complete manuals. Please go to the home page.

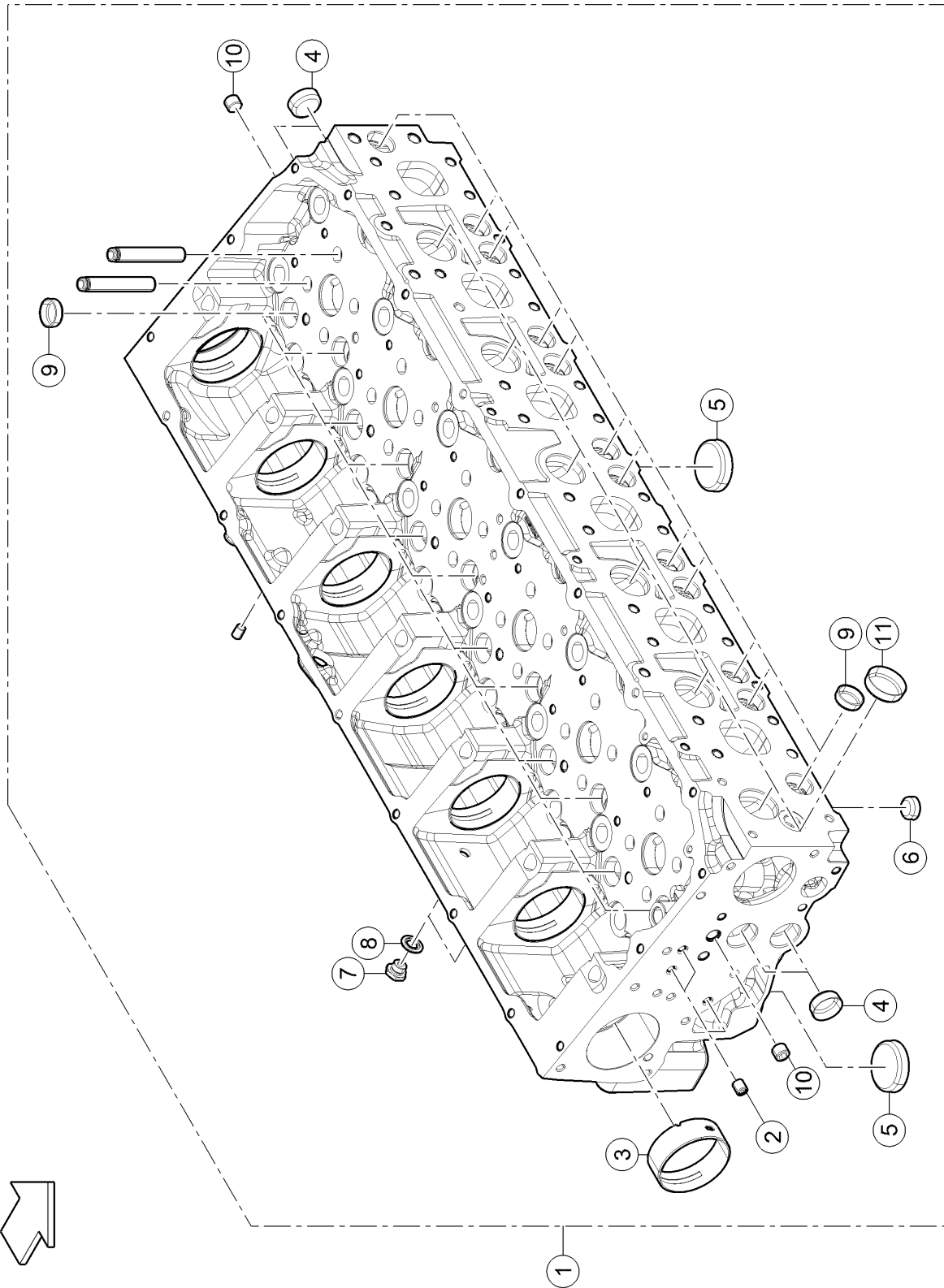
<https://www.ebooklibonline.com>

If the above button click is invalid. Please download this document first, and then click the above link to download the complete manual.

Thank you so much for reading

220 FLYWHEEL

Pos.	Part No.	Description	Dimension	Quantity	Conditions
1	00 1160 226 0	FLYWHEEL		1	
2	00 1143 452 0	SCREW		8	



<https://www.ebooklibonline.com>

Hello dear friend!

Thank you very much for reading.

Enter the link into your browser.

The full manual is available for immediate download.

<https://www.ebooklibonline.com>