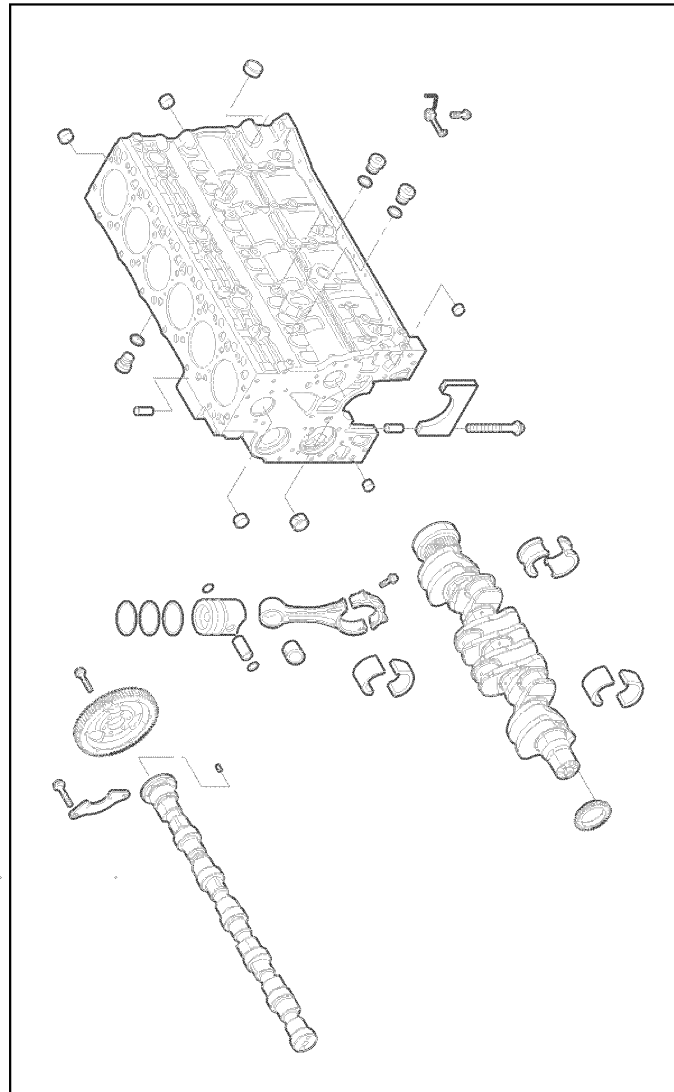


010 COMPLETE ENGINE 1)

Pos.	Part No.	Description	Dimension	Quantity	Conditions
1	00 2617 704 0	ENGINE	FPT 168 KW MAX POWER ISO	1	2)
2	00 2617 706 0	ENGINE	FPT 179 KW MAX POWER ISO	1	3)
3	00 2617 708 0	ENGINE	FPT 192 KW MAX POWER ISO	1	4)
4	00 2617 710 0	ENGINE	FPT 209 KW MAX POWER ISO	1	5)
5	00 2617 705 0	ENGINE	FPT 6CYL CVT 168KW MAX P	1	6)
6	00 2617 707 0	ENGINE	FPT 6CYL CVT 179KW MAX P	1	7)
7	00 2617 709 0	ENGINE	FPT 6CYL CVT 192KW MAX P	1	8)
8	00 2617 711 0	ENGINE	FPT 6CYL CVT 209KW MAX P	1	9)

1)	machine no.		+ from A6100050
2)	Equipment	TJ_P02_0611	215 hp max. output, 229 hp type-approved rated output, ECE R 120
3)	Equipment	TJ_P02_0612	235 hp max. output, 240 hp type-approved rated output, ECE R 120
4)	Equipment	TJ_P02_0613	264 hp max. output, 261 hp type-approved rated output, ECE R 120
5)	Equipment	TJ_P02_0614	295 hp max. output, 284 hp type-approved rated output, ECE R 120
6)	Equipment	TJ_P02_0615	215 hp max. output, 205 hp type-approved rated output, ECE R 120
7)	Equipment	TJ_P02_0616	235 hp max. output, 225 hp type-approved rated output, ECE R 120
8)	Equipment	TJ_P02_0617	264 hp max. output, 250 hp type-approved rated output, ECE R 120
9)	Equipment	TJ_P02_0618	295 hp max. output, 270 hp type-approved rated output, ECE R 120



1

<https://www.ebooklibonline.com>

Hello dear friend!

Thank you very much for reading.

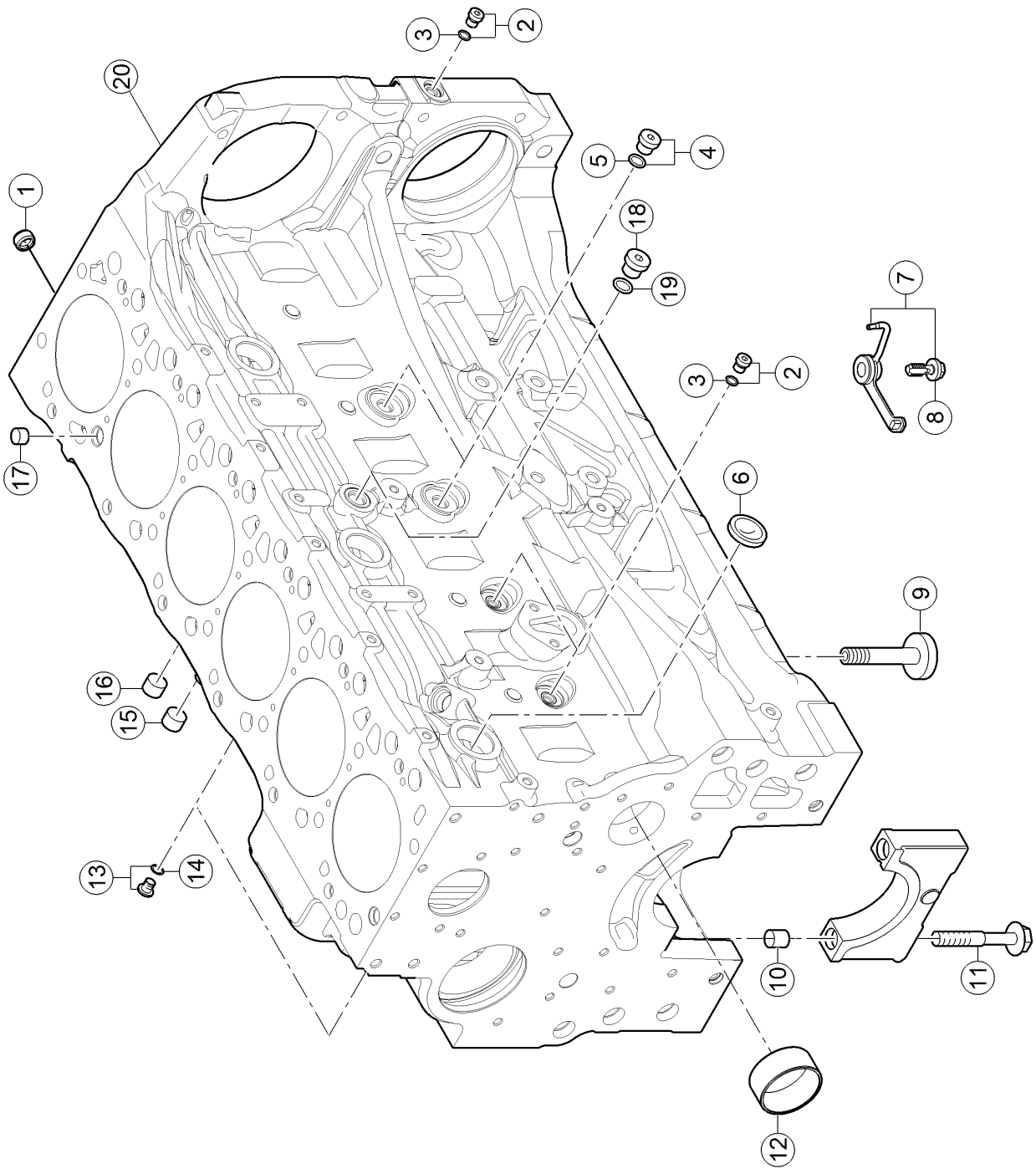
Enter the link into your browser.

The full manual is available for immediate download.

<https://www.ebooklibonline.com>

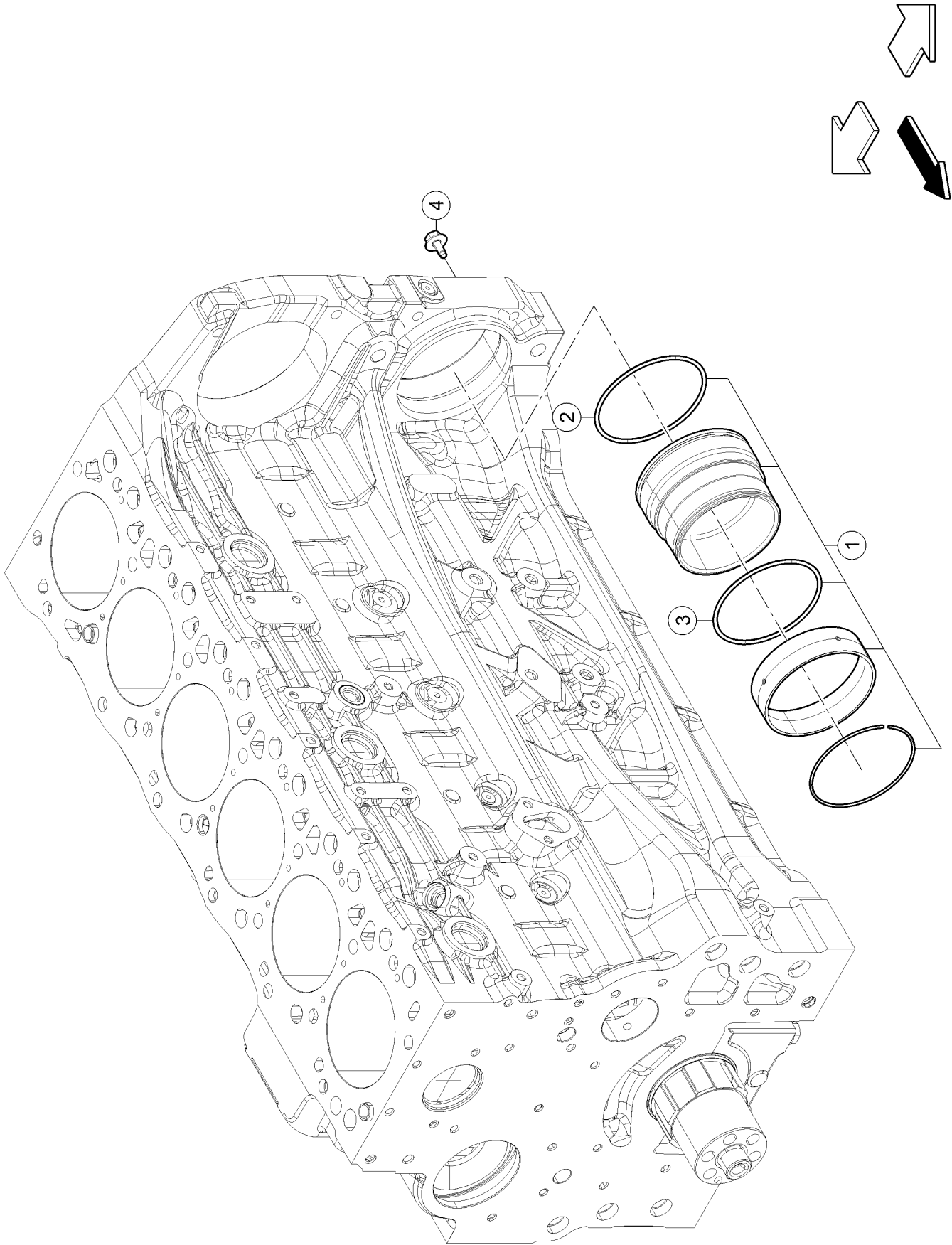
010 COMPLETE ENGINE 1)

Pos.	Part No.	Description	Dimension	Quantity	Conditions
1	00 1149 432 0	SHORT BLOCK		1	
1)	machine no.				+ from A6100050



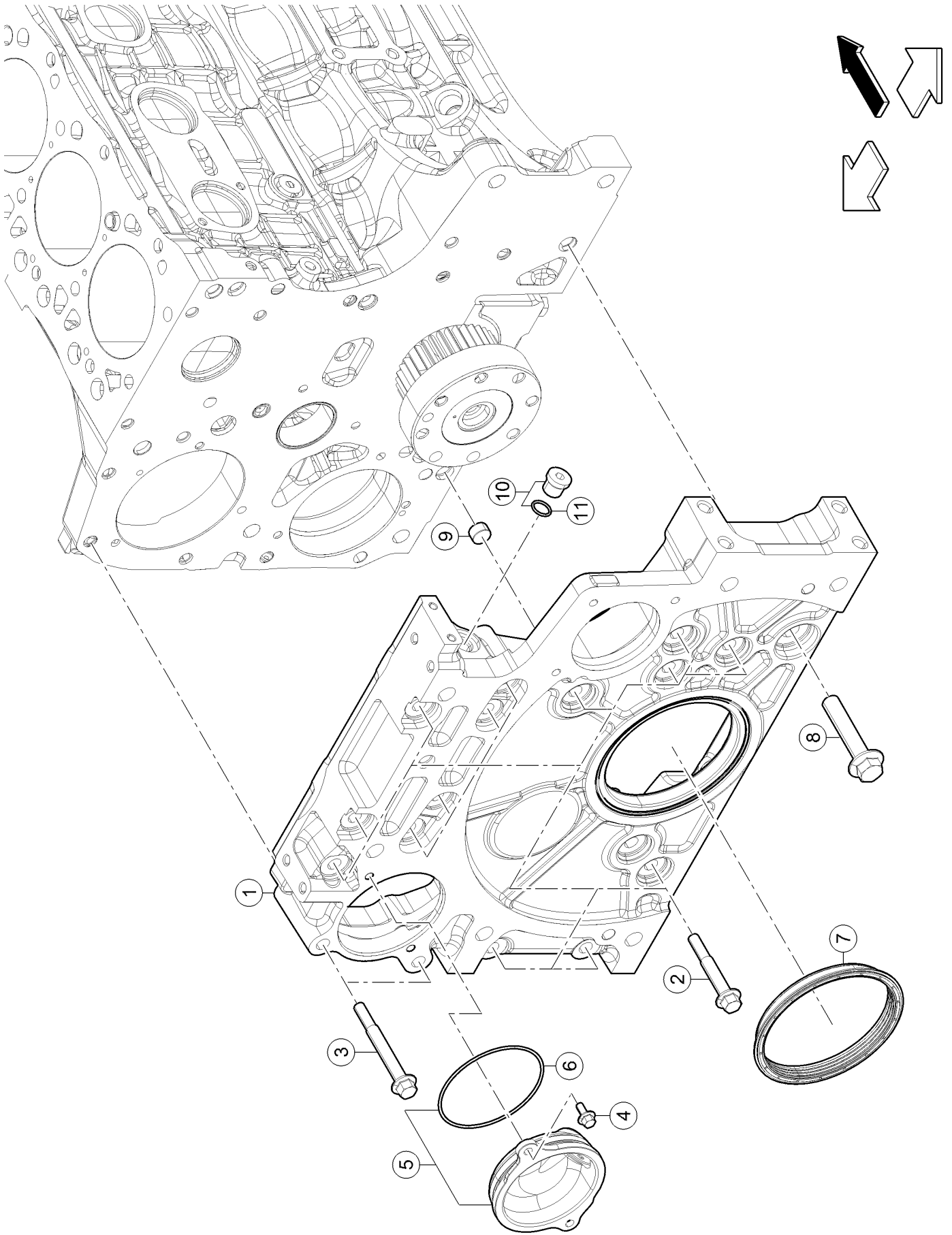
100 CRANKCASE

Pos.	Part No.	Description	Dimension	Quantity	Conditions
1	00 1139 588 0	NOZZLE		1	
2	60 0503 098 3	PLUG		3	
3	60 0503 098 4	O-RING		3	
4	60 0503 100 0	PLUG		2	
5	60 0503 100 1	O-RING		2	
6	60 0503 098 2	PLUG		3	
7	60 0503 099 8	NOZZLE		6	1)
7	00 1164 565 0	NOZZLE		6	2)
8	60 0503 099 7	SCREW		6	1)
9	00 1149 427 0	PUSHROD		12	
10	60 0503 098 6	CENTRING PIN		14	
11	60 0503 098 5	SCREW		14	
12	60 0503 098 1	BUSHING		1	
13	60 0503 099 3	PLUG		2	
14	60 0503 099 4	O-RING		2	
15	60 0503 099 0	PLUG		2	
16	60 0503 098 0	PLUG		6	
17	60 0503 098 7	CENTRING PIN		2	
18	60 0503 100 2	LOCK		1	
19	00 1140 021 0	SEALING RING		1	
20	00 1167 351 0	CRANKCASE		1	
<hr/>					
1)	machine no.				+ up to A6100013
<hr/>					
2)	machine no.				+ from A6100014
<hr/>					



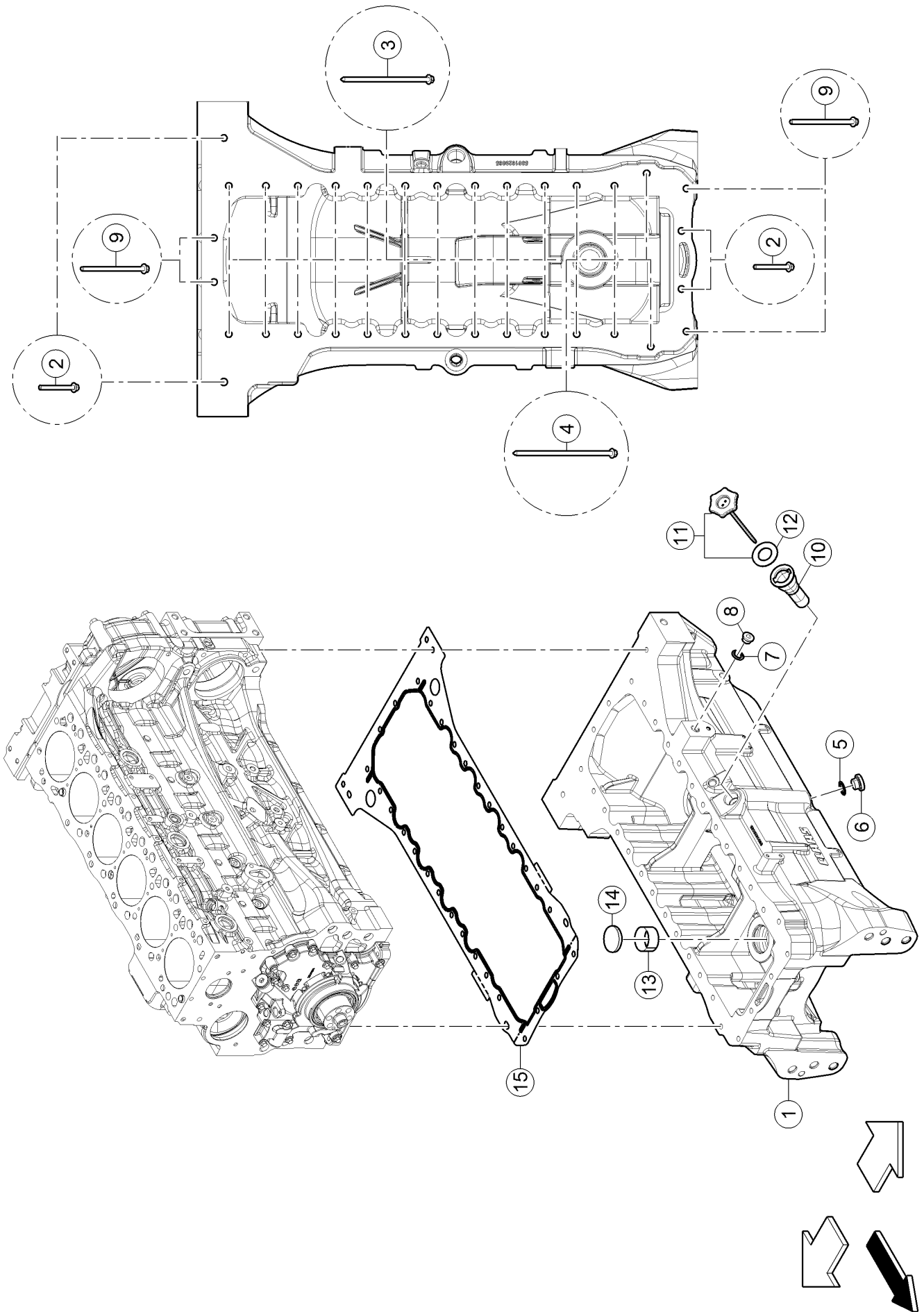
100 CRANKCASE

Pos.	Part No.	Description	Dimension	Quantity	Conditions
1	00 1153 600 0	SMOOTH RING		1	
2	60 0503 120 1	O-RING		1	
3	60 0503 120 2	O-RING		1	
4	00 1153 601 0	STD SCREW		1	



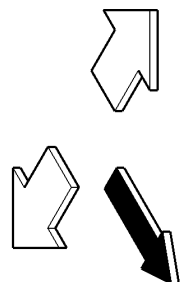
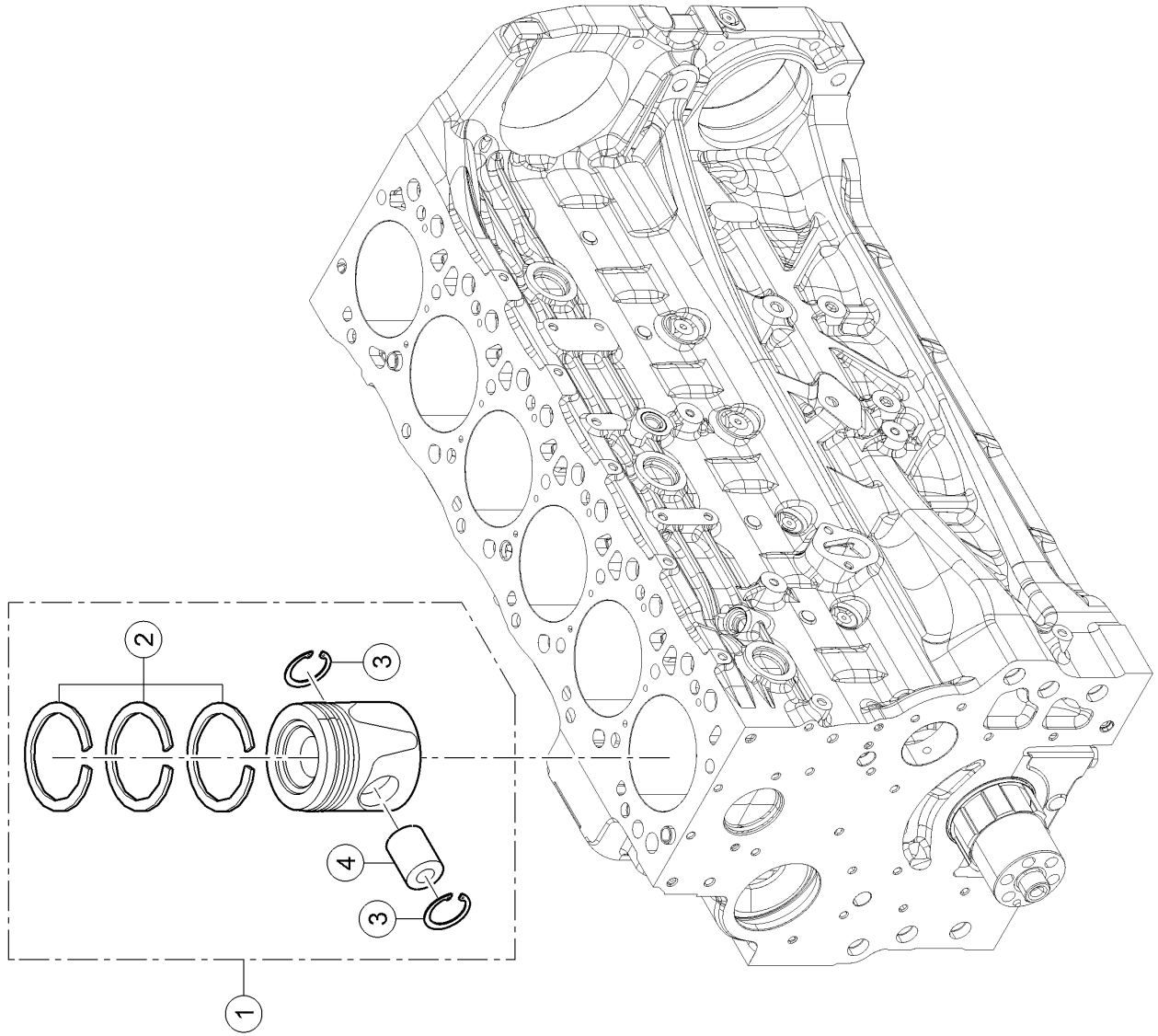
120 TIMING CASE

Pos.	Part No.	Description	Dimension	Quantity	Conditions
1	00 1166 989 0	CASING		1	
2	00 1139 458 0	SCREW		15	
3	00 1139 460 0	SCREW		2	
4	60 0503 112 2	SCREW		2	
5	00 1149 462 0	COVER		1	
6	00 1139 454 0	O-RING		1	
7	00 1147 783 0	SEALING RING		1	
8	00 1139 457 0	SCREW		1	
9	60 0503 100 8	CENTRING PIN		2	
10	60 0503 099 3	PLUG		1	
11	60 0503 099 4	O-RING		1	



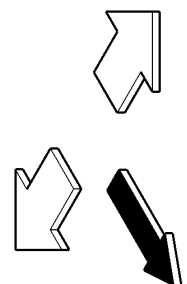
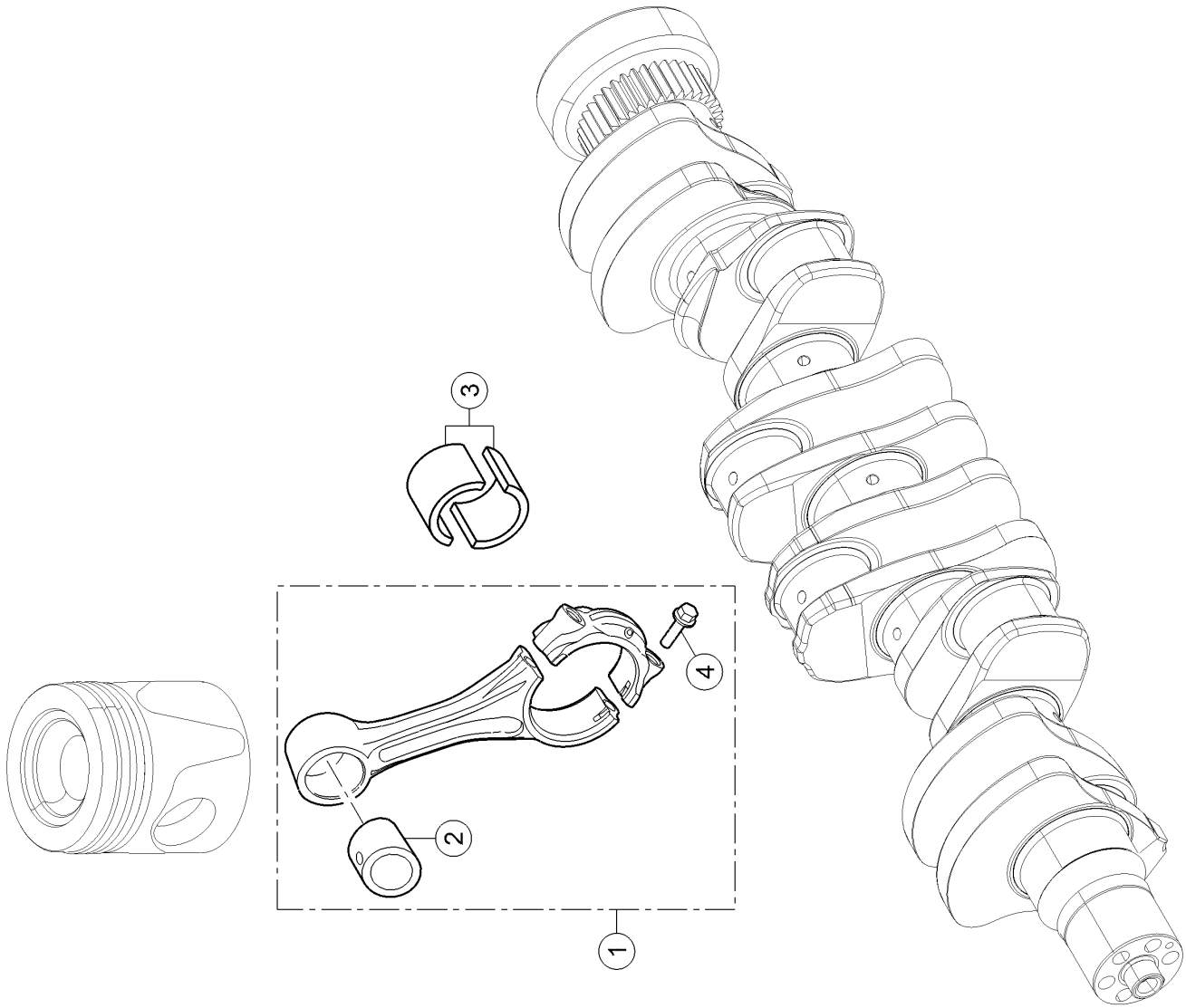
160 OIL PAN

Pos.	Part No.	Description	Dimension	Quantity	Conditions
1	00 1153 444 0	CASING		1	
2	00 1152 885 0	SCREW		4	
3	00 1153 445 0	STD SCREW		20	
4	00 1153 446 0	STD SCREW		6	
5	60 0503 101 1	O-RING		3	
6	60 0503 101 0	SCREW PLUG		3	
7	60 0503 132 7	GASKET		3	
8	60 0502 555 9	LOCK		1	
9	00 1149 499 0	SCREW		4	
10	00 1152 621 0	TUBE		1	
11	00 1152 620 0	GAUGE		1	
12	00 1166 998 0	SEAL		1	
13	60 0503 101 4	ENGINE OIL FILTER		1	
14	60 0503 101 5	LOCK		1	
15	00 1160 926 0	FLAT SEAL		1	



100 CYLINDER LINER, PISTON

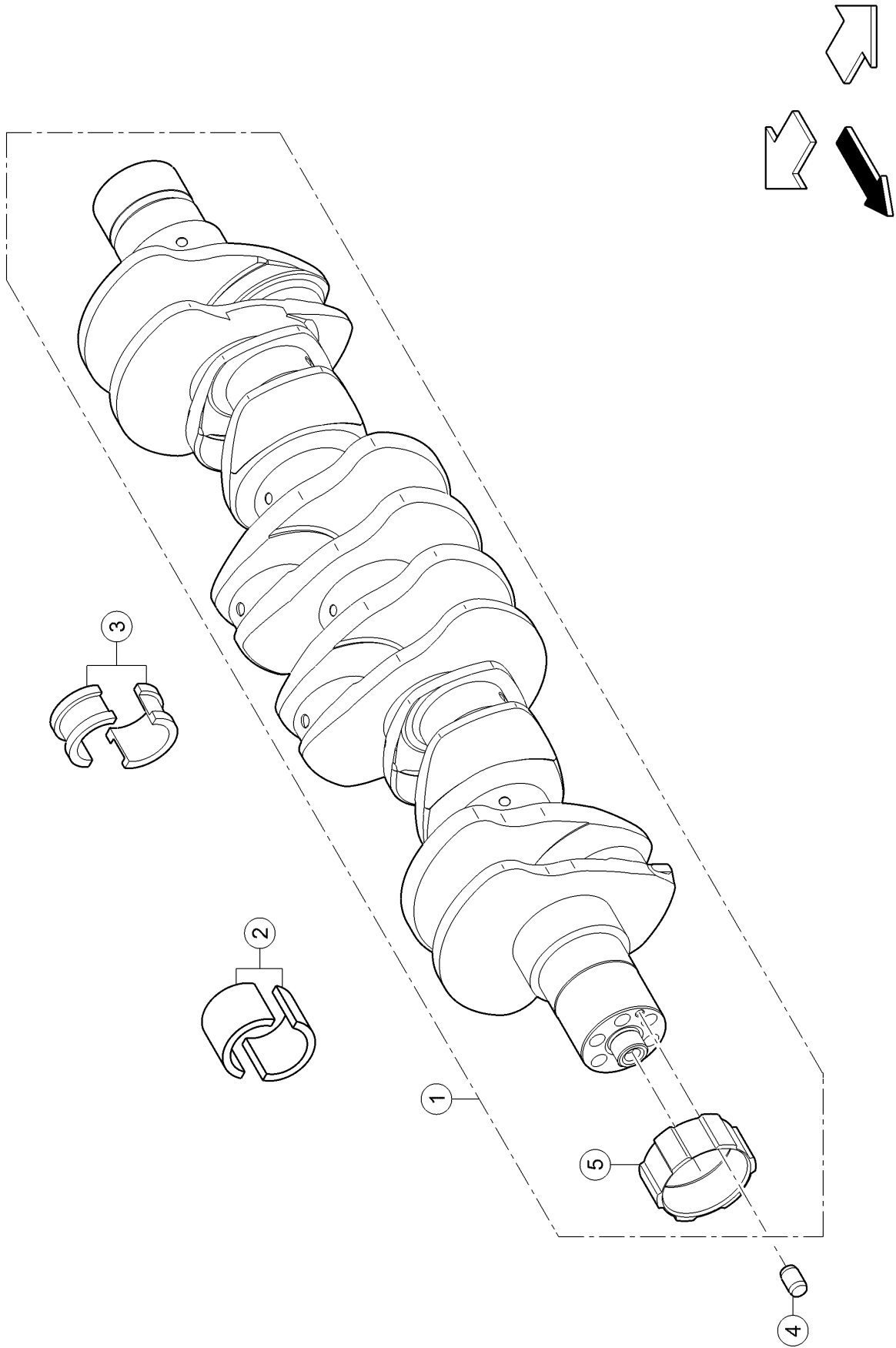
Pos.	Part No.	Description	Dimension	Quantity	Conditions
1	00 1165 433 0	CYLINDER PISTON		6	
2	00 1158 828 0	ENGINE PISTON RING		6	
3	00 1149 532 0	INT RETAINING RING		12	
4	00 1149 533 0	AXLE		6	



120 CONNECTING ROD, CONNECTING ROD BEARINGS

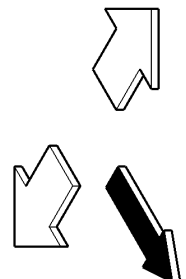
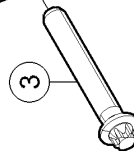
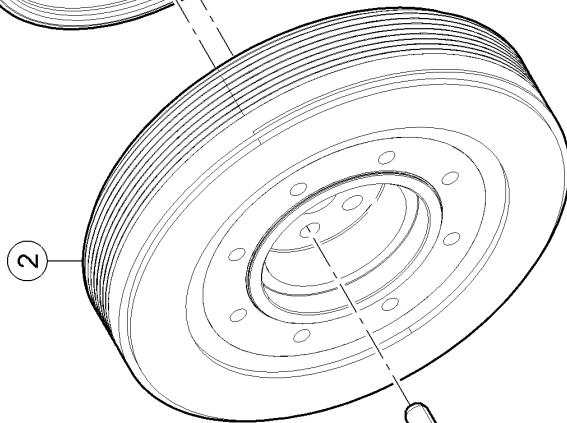
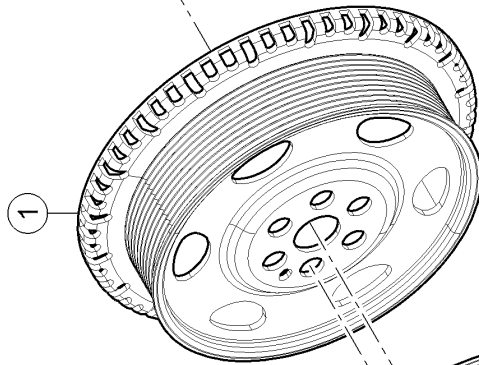
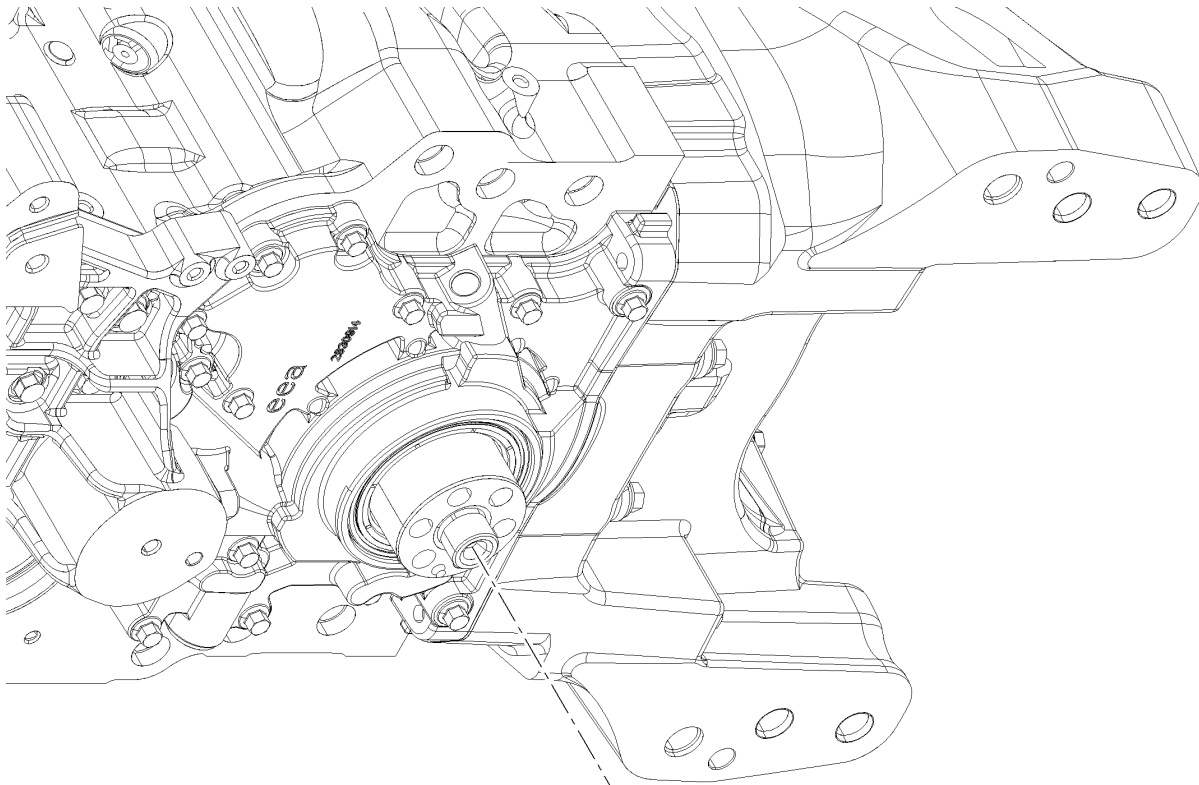
Pos.	Part No.	Description	Dimension	Quantity	Conditions
1	00 1149 550 0	ROD (ENGINE)		6	1)
1	00 1166 560 0	ROD (ENGINE)		6	2)
2	00 1149 551 0	RING		6	
3	00 1152 896 0	SET OF BEARING BUSHES		6	3)
3	00 1152 897 0	SET OF BEARING BUSHES		6	4)
3	00 1152 898 0	SET OF BEARING BUSHES		6	5)
4	60 0503 108 9	SCREW		12	

1)	machine no.	+ up to A6100054 "Up to # 1502775 :
2)	machine no.	+ from A6100055 "From # 1502776 :
3)	Remarks	STANDARD
4)	Remarks	-0,250
5)	Remarks	-0,500



140 CRANKSHAFT

Pos.	Part No.	Description	Dimension	Quantity	Conditions
1	00 1149 561 0	CRANKSHAFT		1	
2	00 1164 242 0	SET OF BEARING BUSHES		6	1)
2	00 1150 898 0	SET OF BEARING BUSHES		6	2)
2	00 1167 011 0	SET OF BEARING BUSHES		6	3)
3	00 1167 010 0	SET OF BEARING BUSHES		1	1)
3	00 1167 012 0	SET OF BEARING BUSHES		1	2)
3	00 1167 013 0	SET OF BEARING BUSHES		1	3)
4	60 0503 110 4	CENTRING PIN		1	
5	00 1139 671 0	BUSHING		1	
1)	Remarks		STANDARD		
2)	Remarks		-0,250		
3)	Remarks		-0,500		

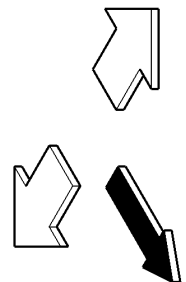
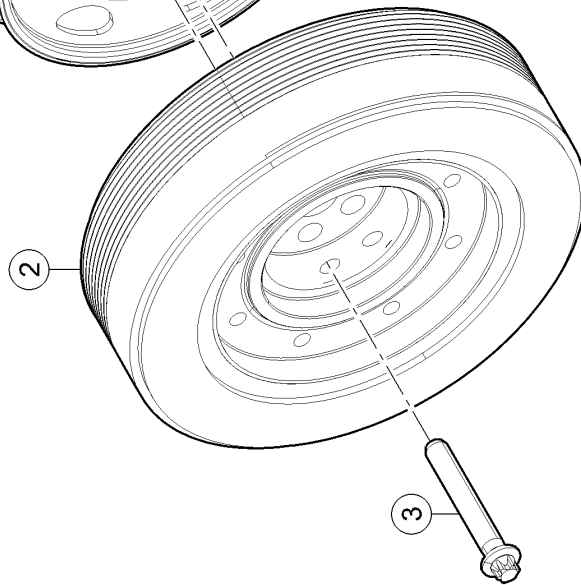
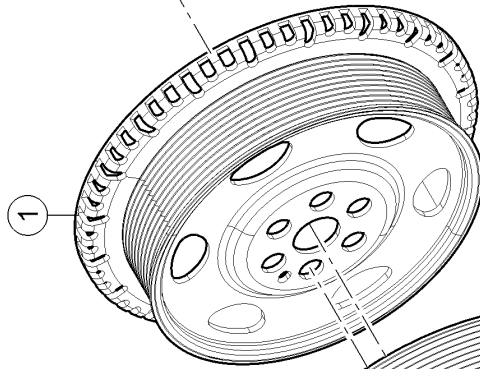
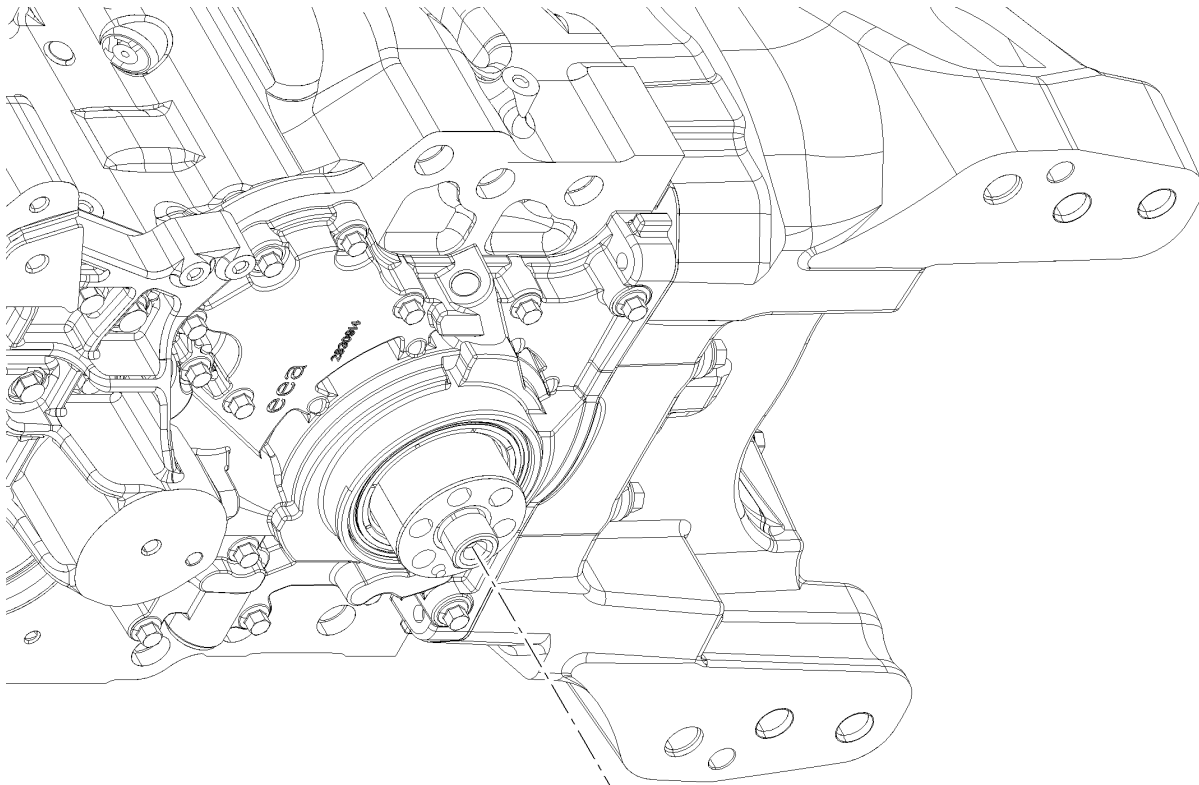


160 CRANKSHAFT PULLEY WHEEL 1)

Pos.	Part No.	Description	Dimension	Quantity	Conditions
1	00 1166 991 0	PULLEY		1	
2	00 1149 567 0	HUB		1	
3	60 0503 104 3	SCREW		6	

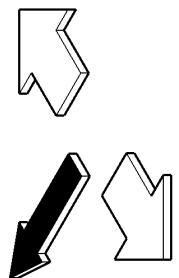
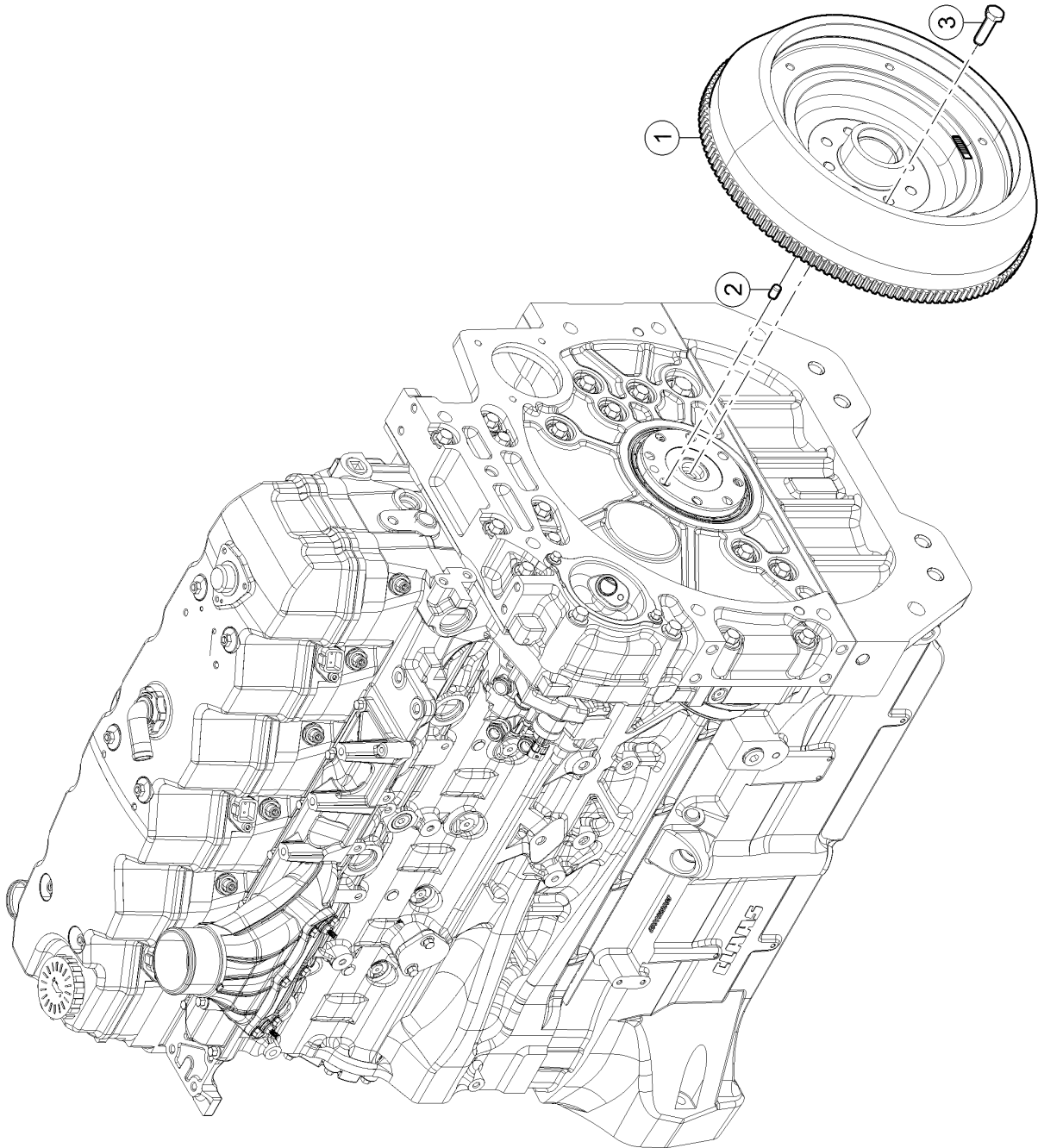
1) Equipment

TJ_P02_0611	215 hp max. output, 229 hp type-approved rated output, ECE R 120
TJ_P02_0612	235 hp max. output, 240 hp type-approved rated output, ECE R 120
TJ_P02_0613	264 hp max. output, 261 hp type-approved rated output, ECE R 120
TJ_P02_0615	215 hp max. output, 205 hp type-approved rated output, ECE R 120
TJ_P02_0616	235 hp max. output, 225 hp type-approved rated output, ECE R 120
TJ_P02_0617	264 hp max. output, 250 hp type-approved rated output, ECE R 120



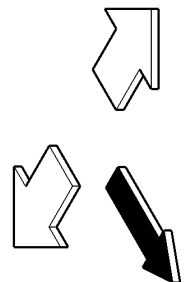
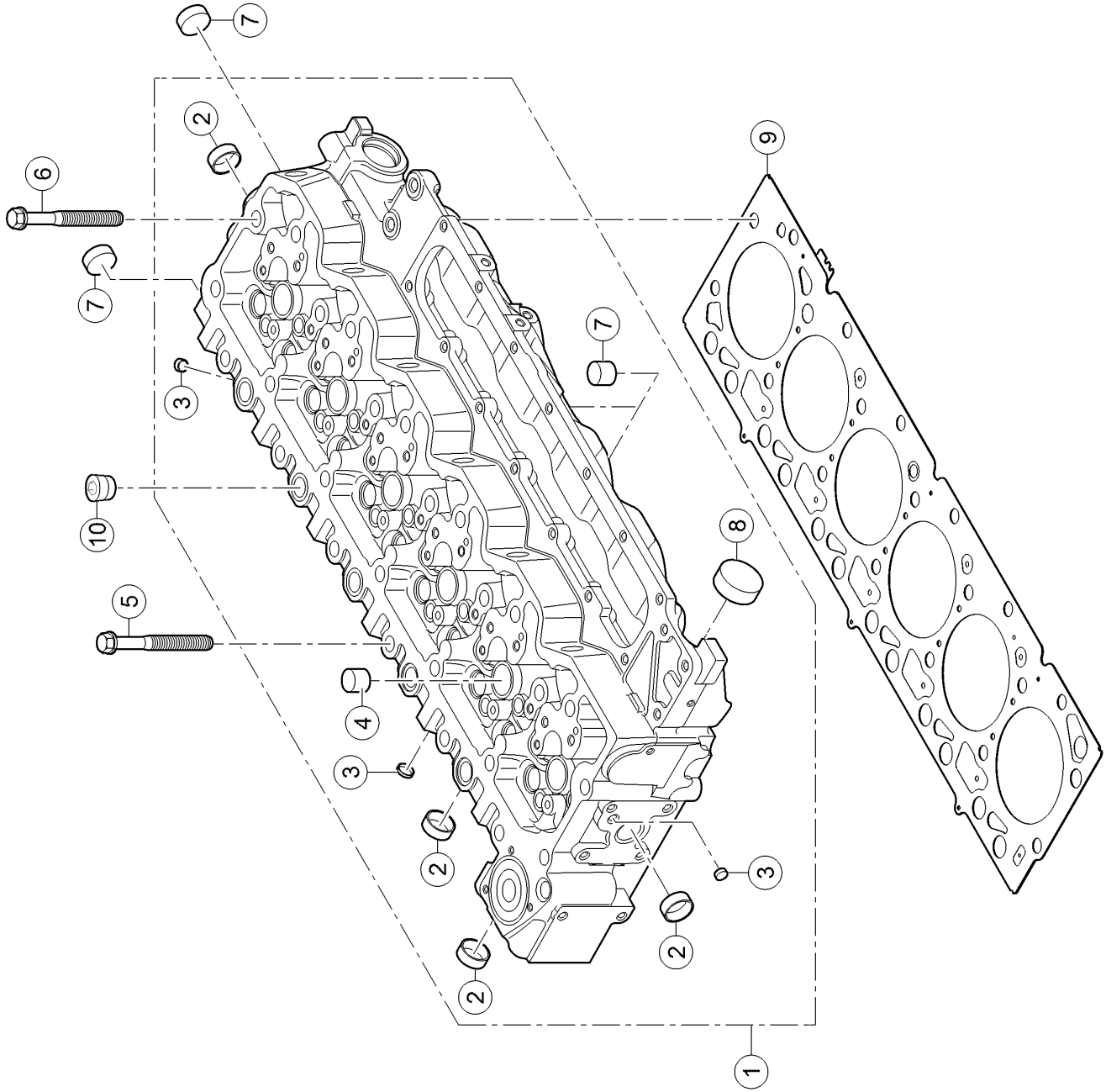
160 CRANKSHAFT PULLEY WHEEL 1)

Pos.	Part No.	Description	Dimension	Quantity	Conditions
1	00 1166 991 0	PULLEY		1	
2	00 1161 317 0	HUB		1	
3	60 0503 104 3	SCREW		6	
<hr/>					
1)	Equipment				
		TJ_P02_0614			295 hp max. output, 284 hp type-approved rated output, ECE R 120
		TJ_P02_0618			295 hp max. output, 270 hp type-approved rated output, ECE R 120



220 FLYWHEEL

Pos.	Part No.	Description	Dimension	Quantity	Conditions
1	00 1151 080 0	FLYWHEEL		1	
2	60 0503 111 0	CENTRING PIN		1	
3	00 1149 569 0	SCREW		8	

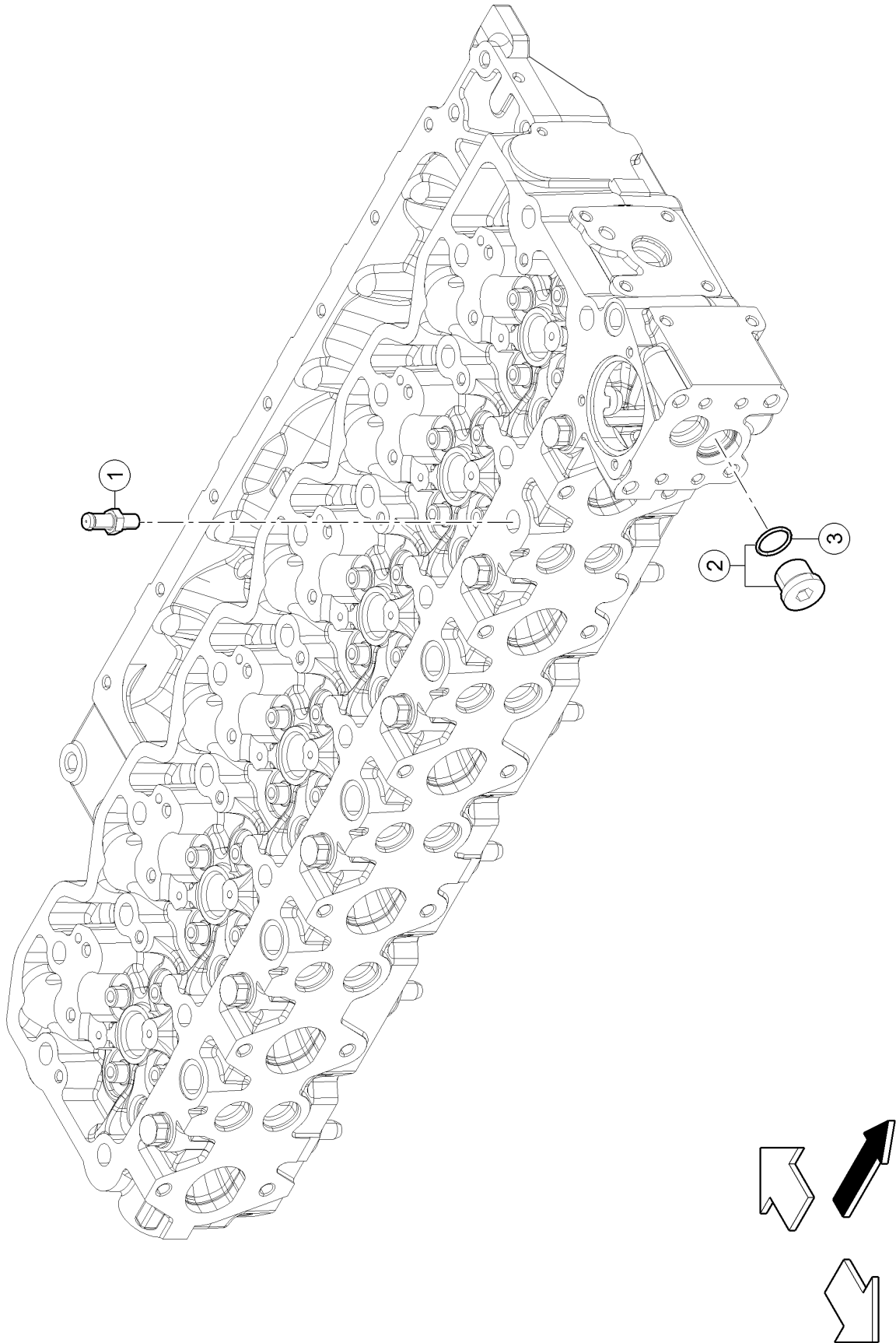


100 CYLINDER HEAD

Pos.	Part No.	Description	Dimension	Quantity	Conditions
1	00 1149 571 0	CYLINDER HEAD		1	
2	00 1139 905 0	PLUG		13	
3	00 1149 572 0	PLUG		7	
4	60 0503 099 1	PLUG		11	
5	00 1149 573 0	SCREW		12	
6	00 1149 574 0	SCREW		14	
7	00 1166 990 0	PLUG		3	
8	00 1149 576 0	PLUG		2	
9	00 1149 577 0	CYLINDER HEAD GASKET		1	1)
9	00 1160 918 0	CYLINDER HEAD GASKET		1	2)
10	60 0503 113 1	PLUG		4	
1)	Remarks		ép.1,25mm		
2)	Remarks		ép.1,15mm		

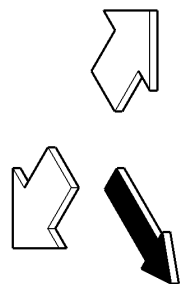
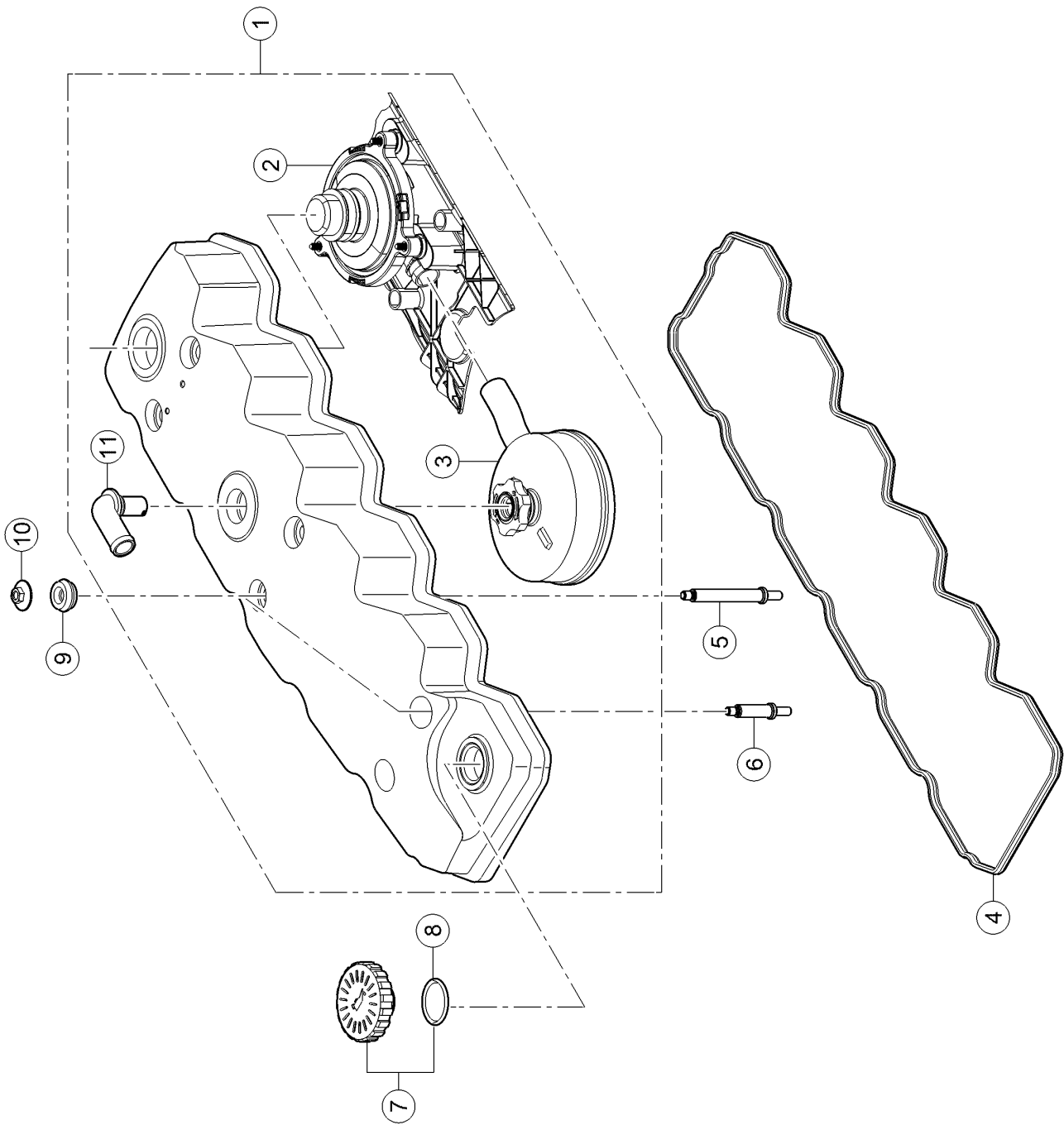
100 CYLINDER HEAD

Pos.	Part No.	Description	Dimension	Quantity	Conditions
1	00 1150 658 1	CYLINDER HEAD		1	



100 CYLINDER HEAD

Pos.	Part No.	Description	Dimension	Quantity	Conditions
1	00 1153 009 0	UNION CONNECTOR		1	
2	00 1153 011 0	PLUG		1	
3	00 1153 012 0	O-RING		1	





Suggest:

For more complete manuals. Please go to the home page.

<https://www.ebooklibonline.com>

If the above button click is invalid. Please download this document first, and then click the above link to download the complete manual.

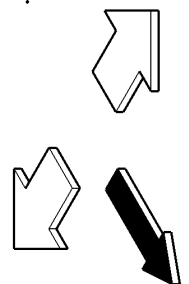
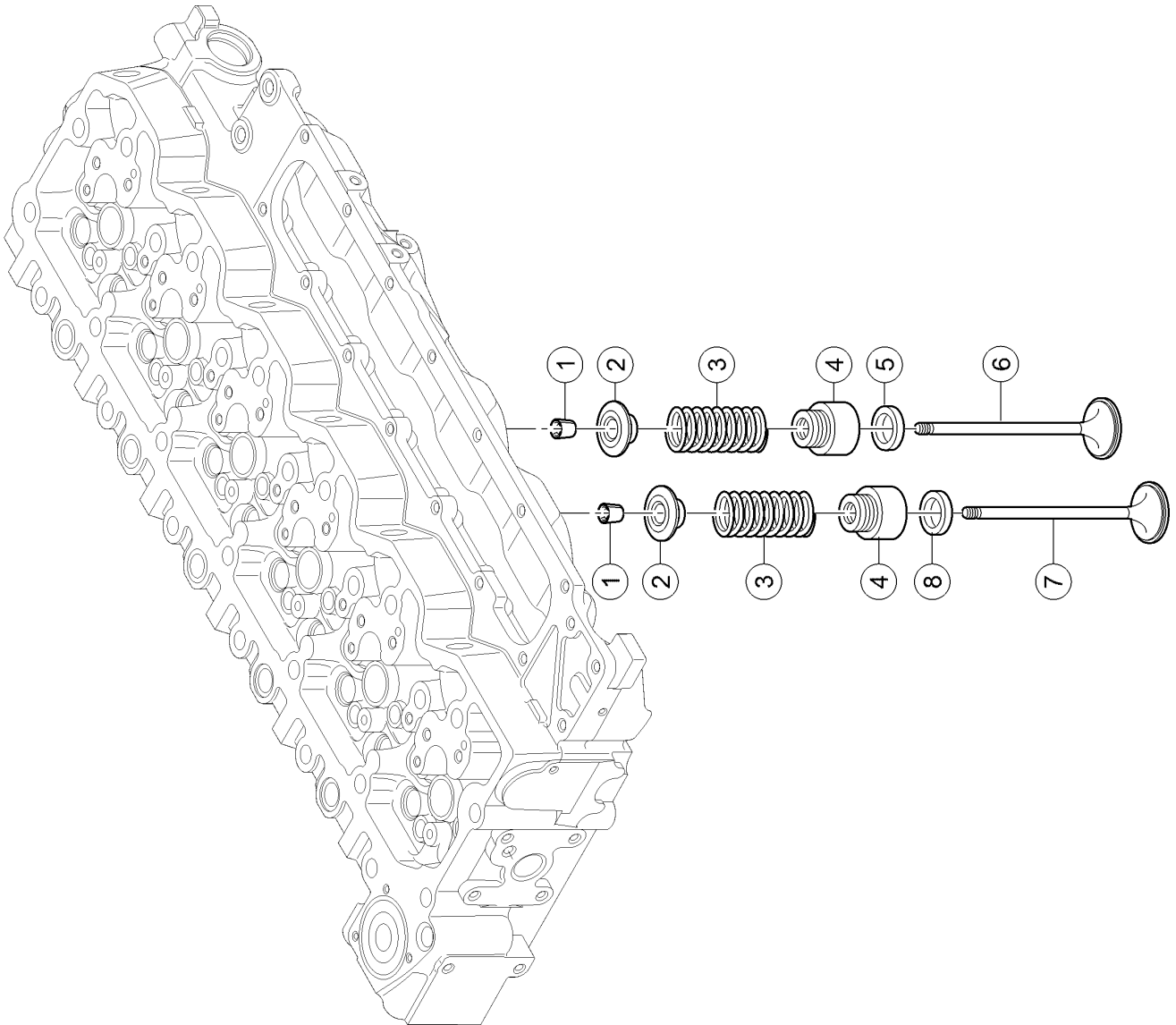
Thank you so much for reading

120 CYLINDER HEAD COVER

Pos.	Part No.	Description	Dimension	Quantity	Conditions
1	00 1164 148 0	ROCKER COVER		1	1)
1	00 1167 668 0	ROCKER COVER		1	2)
2	00 1164 149 0	HYDRAULIC VALVE		1	
3	00 1164 150 0	OIL VAPOUR FILTER		1	
4	00 1149 661 0	SEAL		1	1)
4	00 1167 659 0	VALVE COVER SEAL		1	2)
5	00 1149 662 0	STUD BOLT		4	
6	00 1149 663 0	STUD BOLT		2	
7	00 1149 664 0	PLUG		1	
8	00 1149 665 0	O-RING		1	
9	00 1149 666 0	SEALING RING		6	
10	00 1149 667 0	PLUG		6	
11	00 1149 668 0	TUBE		1	

1) machine no. + up to A6100159
 - A6100148
 - A6100153
 - A6100157
 - A6100158
 + A6100166
 + A6100167
 + A6100188
 + A6100194
 + A6100435

2) machine no. + A6100148
 + A6100153
 + A6100157
 + A6100158
 + from A6100160
 - A6100166
 - A6100167
 - A6100188
 - A6100194
 - A6100435



<https://www.ebooklibonline.com>

Hello dear friend!

Thank you very much for reading.

Enter the link into your browser.

The full manual is available for immediate download.

<https://www.ebooklibonline.com>