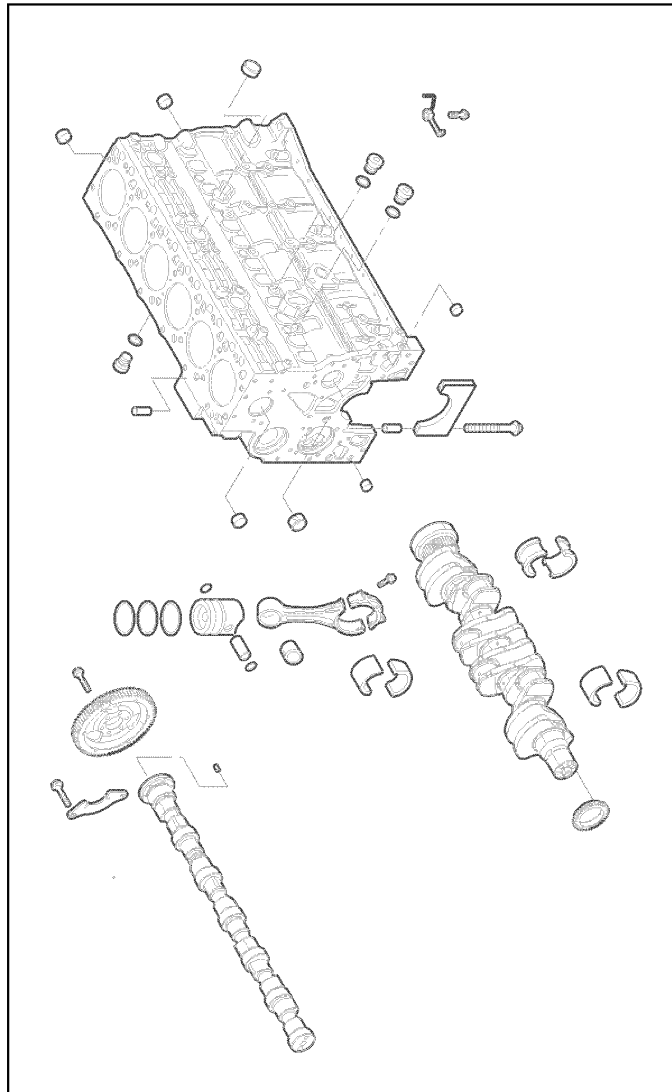


**010 COMPLETE ENGINE**

Pos.	Part No.	Description	Dimension	Quantity	Conditions
1	<b>00 2175 857 3</b>	ENGINE		1	1)
2	<b>00 2176 051 3</b>	ENGINE		1	2)
3	<b>00 2159 844 4</b>	ENGINE		1	3)
4	<b>00 2159 846 2</b>	ENGINE		1	4)
5	<b>00 2232 861 0</b>	ENGINE		1	5)
6	<b>00 2232 863 0</b>	ENGINE		1	6)
7	<b>00 2232 865 0</b>	ENGINE		1	7)
8	<b>00 2232 867 0</b>	ENGINE		1	8)
<b>1)</b>	<b>Equipment</b>	TJ_P02_0411	205 hp rated output, 229 hp max. output, ECE R 120		
<b>2)</b>	<b>Equipment</b>	TJ_P02_0412	225 hp rated output, 235 hp max. output, ECE R 120		
<b>3)</b>	<b>Equipment</b>	TJ_P02_0413 TJ_P02_0433	250 hp rated output, 264 hp max. output, ECE R 120 250 hp rated output, 264 hp max. output, ECE R 120		
<b>4)</b>	<b>Equipment</b>	TJ_P02_0414 TJ_P02_0434	270 hp rated output, 295 hp max. output, ECE R 120 270 hp rated output, 295 hp max. output, ECE R 120		
<b>5)</b>	<b>Equipment</b>	TJ_P02_0415	0415_ECER120 205 nom/215 mx NA		
<b>6)</b>	<b>Equipment</b>	TJ_P02_0416	225 hp rated output, 235 hp max. output, ECE R 120		
<b>7)</b>	<b>Equipment</b>	TJ_P02_0417 TJ_P02_0437	0417_ECER120 250 hp nom/264 mx 250 hp rated output, 264 hp max. output, ECE R 120		
<b>8)</b>	<b>Equipment</b>	TJ_P02_0418 TJ_P02_0438	0418_ECER120 270 hp nom/295 mx 270 hp rated output, 295 hp max. output, ECE R 120		



1

**<https://www.ebooklibonline.com>**

Hello dear friend!

Thank you very much for reading.

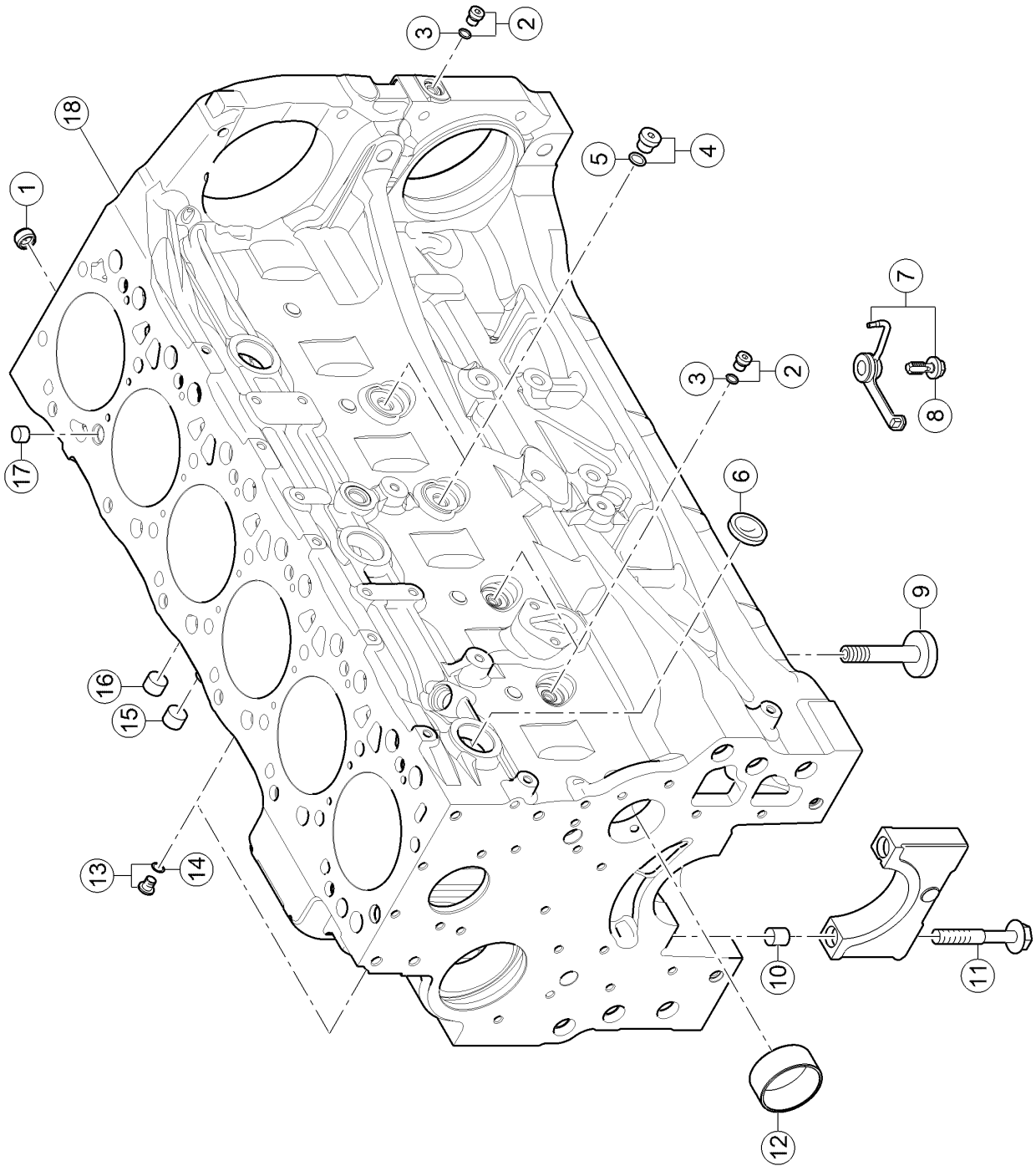
Enter the link into your browser.

The full manual is available for immediate download.

**<https://www.ebooklibonline.com>**

**010 COMPLETE ENGINE**

<b>Pos.</b>	<b>Part No.</b>	<b>Description</b>	<b>Dimension</b>	<b>Quantity</b>	<b>Conditions</b>
1	<b>00 1149 432 0</b>	SHORT BLOCK		1	

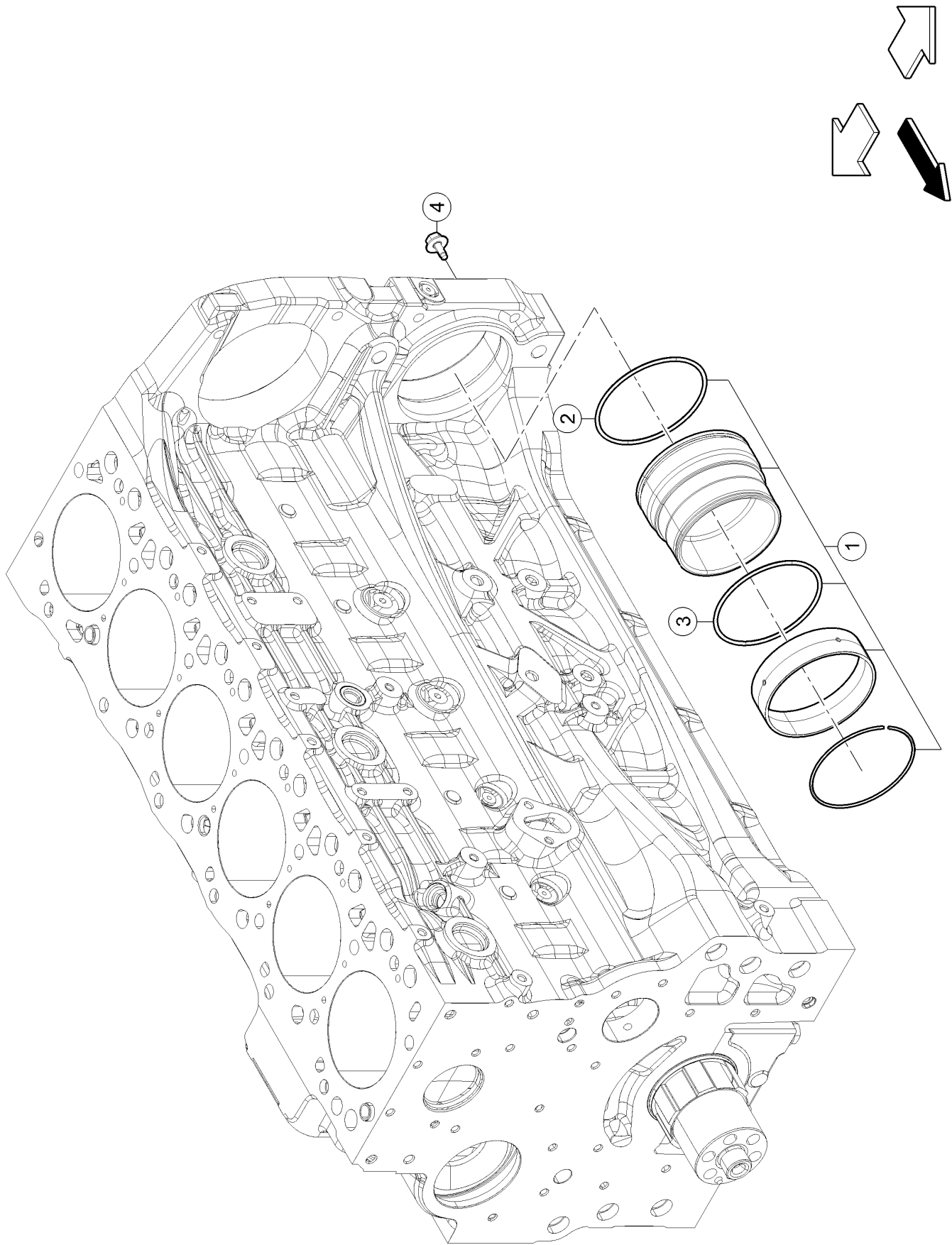


**100 CRANKCASE**

Pos.	Part No.	Description	Dimension	Quantity	Conditions
1	<b>00 1139 588 0</b>	NOZZLE		1	
2	<b>60 0503 098 3</b>	PLUG		3	
3	<b>60 0503 098 4</b>	O-RING		3	
4	<b>60 0503 100 0</b>	PLUG		2	
5	<b>60 0503 100 1</b>	O-RING		2	
6	<b>60 0503 098 2</b>	PLUG		3	
7	<b>60 0503 099 8</b>	NOZZLE		6	1)
7	<b>00 1164 565 0</b>	NOZZLE		6	2)
8	<b>60 0503 099 7</b>	SCREW		6	1)
9	<b>00 1149 427 0</b>	PUSHROD		12	
10	<b>60 0503 098 6</b>	CENTRING PIN		14	
11	<b>60 0503 098 5</b>	SCREW		14	
12	<b>60 0503 098 1</b>	BUSHING		1	
13	<b>60 0503 099 3</b>	PLUG		2	
14	<b>60 0503 099 4</b>	O-RING		2	
15	<b>60 0503 099 0</b>	PLUG		2	
16	<b>60 0503 098 0</b>	PLUG		6	
17	<b>60 0503 098 7</b>	CENTRING PIN		2	
18	<b>00 1167 351 0</b>	CRANKCASE		1	

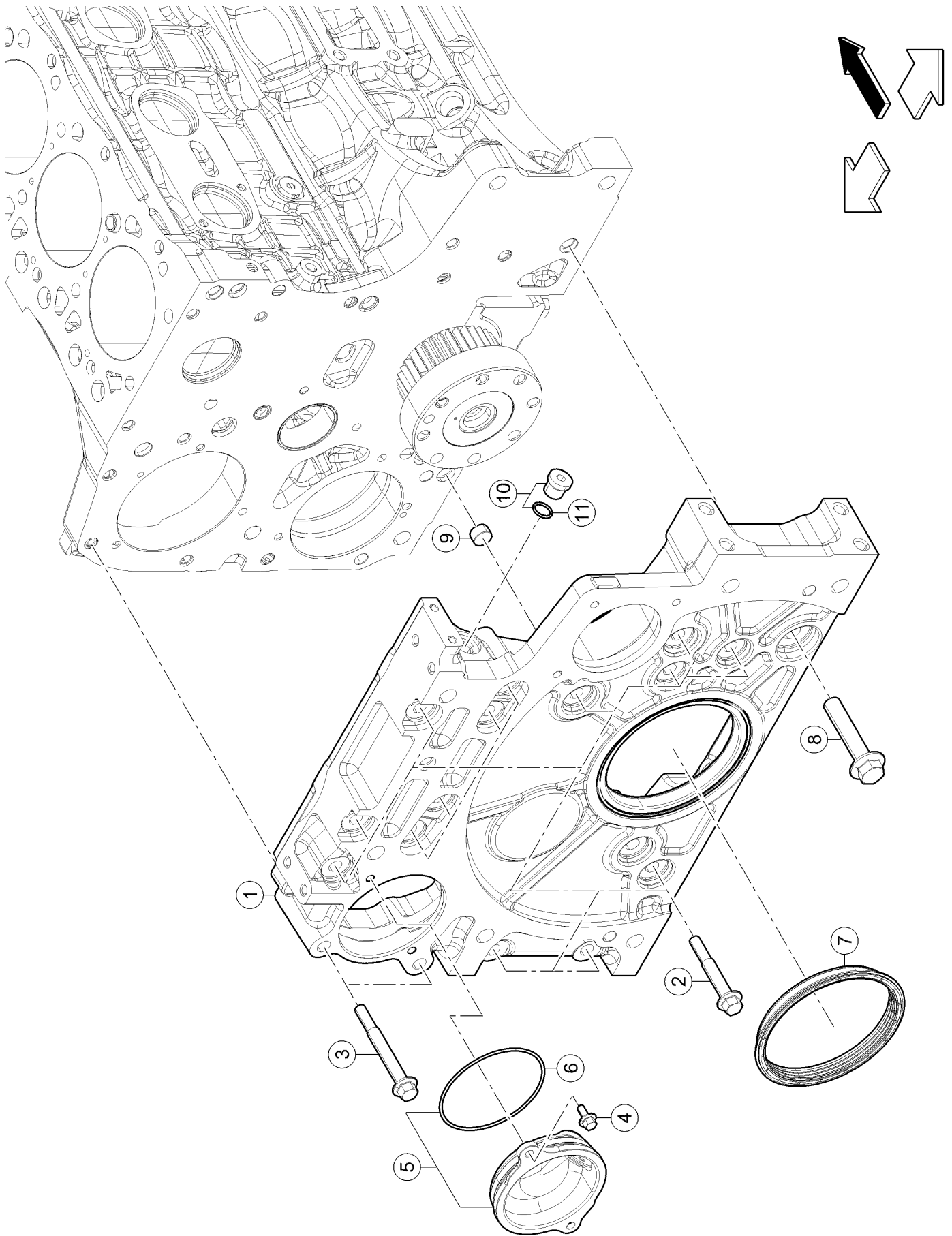
**1) machine no.** + up to A4102386  
 - A4102383  
 - A4102384  
 + A4102399  
 Up to Engine N° 1444454

**2) machine no.** + A4102383  
 + A4102384  
 + from A4102387  
 - A4102399  
 From Engine N°1444455



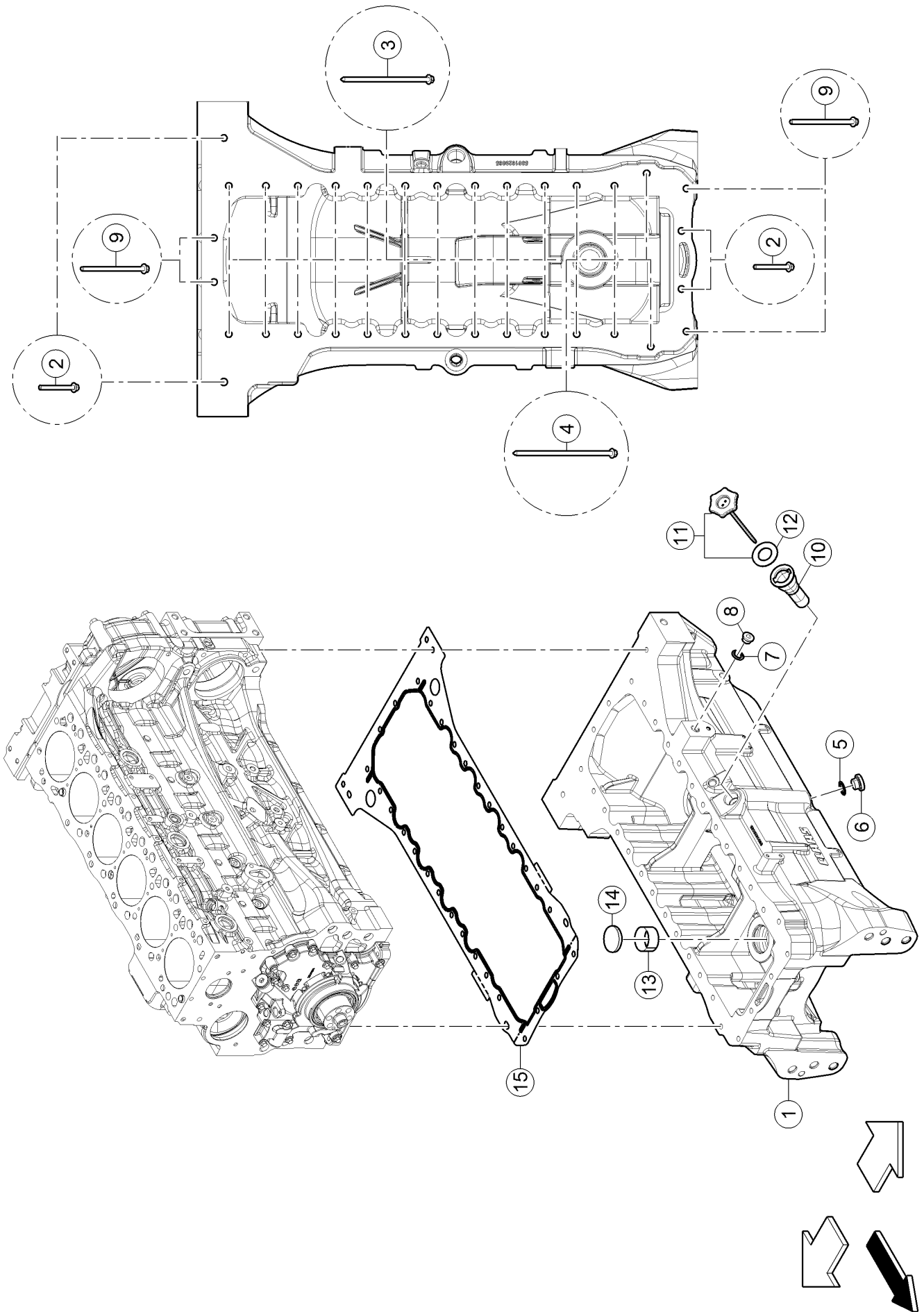
**100 CRANKCASE**

<b>Pos.</b>	<b>Part No.</b>	<b>Description</b>	<b>Dimension</b>	<b>Quantity</b>	<b>Conditions</b>
1	<b>00 1153 600 0</b>	SMOOTH RING		1	
2	<b>60 0503 120 1</b>	O-RING		1	
3	<b>60 0503 120 2</b>	O-RING		1	
4	<b>00 1153 601 0</b>	STD SCREW		1	



**120 TIMING CASE**

<b>Pos.</b>	<b>Part No.</b>	<b>Description</b>	<b>Dimension</b>	<b>Quantity</b>	<b>Conditions</b>
1	<b>00 1149 460 0</b>	CASING		1	
2	<b>00 1139 458 0</b>	SCREW		15	
3	<b>00 1139 460 0</b>	SCREW		2	
4	<b>60 0503 112 2</b>	SCREW		2	
5	<b>00 1149 462 0</b>	COVER		1	
6	<b>00 1139 454 0</b>	O-RING		1	
7	<b>00 1147 783 0</b>	SEALING RING		1	
8	<b>00 1139 457 0</b>	SCREW		1	
9	<b>60 0503 100 8</b>	CENTRING PIN		2	
10	<b>60 0503 099 3</b>	PLUG		1	
11	<b>60 0503 099 4</b>	O-RING		1	

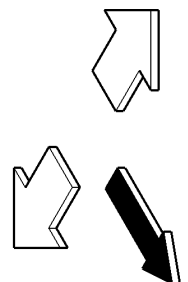
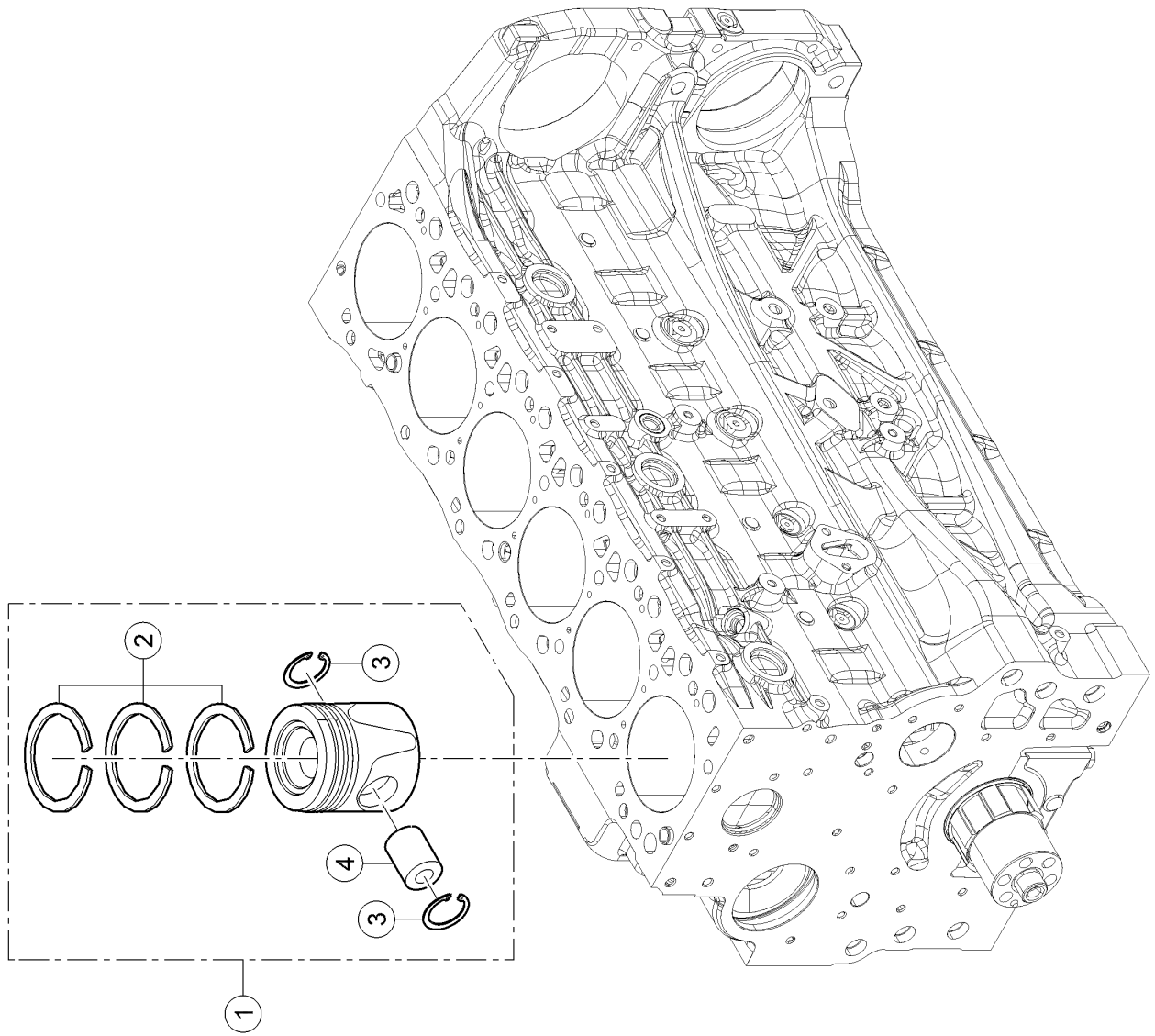


**160 OIL PAN**

Pos.	Part No.	Description	Dimension	Quantity	Conditions
1	<b>00 1149 495 0</b>	CASING		1	1)
1	<b>00 1153 444 0</b>	CASING		1	2)
2	<b>00 1149 496 0</b>	SCREW		4	1)
2	<b>00 1152 885 0</b>	SCREW		4	2)
3	<b>00 1149 497 0</b>	SCREW		20	1)
3	<b>00 1153 445 0</b>	STD SCREW		20	2)
4	<b>00 1149 498 0</b>	SCREW		6	1)
4	<b>00 1153 446 0</b>	STD SCREW		6	2)
5	<b>60 0503 101 1</b>	O-RING		3	
6	<b>60 0503 101 0</b>	SCREW PLUG		3	
7	<b>60 0503 132 7</b>	GASKET		3	
8	<b>60 0502 555 9</b>	LOCK		1	
9	<b>00 1149 499 0</b>	SCREW		4	
10	<b>00 1152 621 0</b>	TUBE		1	
11	<b>00 1152 620 0</b>	GAUGE		1	
12	<b>60 0503 146 2</b>	SEALING RING		1	
13	<b>60 0503 101 4</b>	ENGINE OIL FILTER		1	
14	<b>60 0503 101 5</b>	LOCK		1	
15	<b>00 1149 501 0</b>	FLAT SEAL		1	

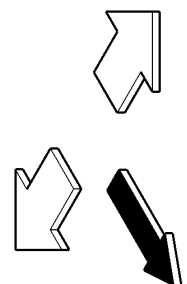
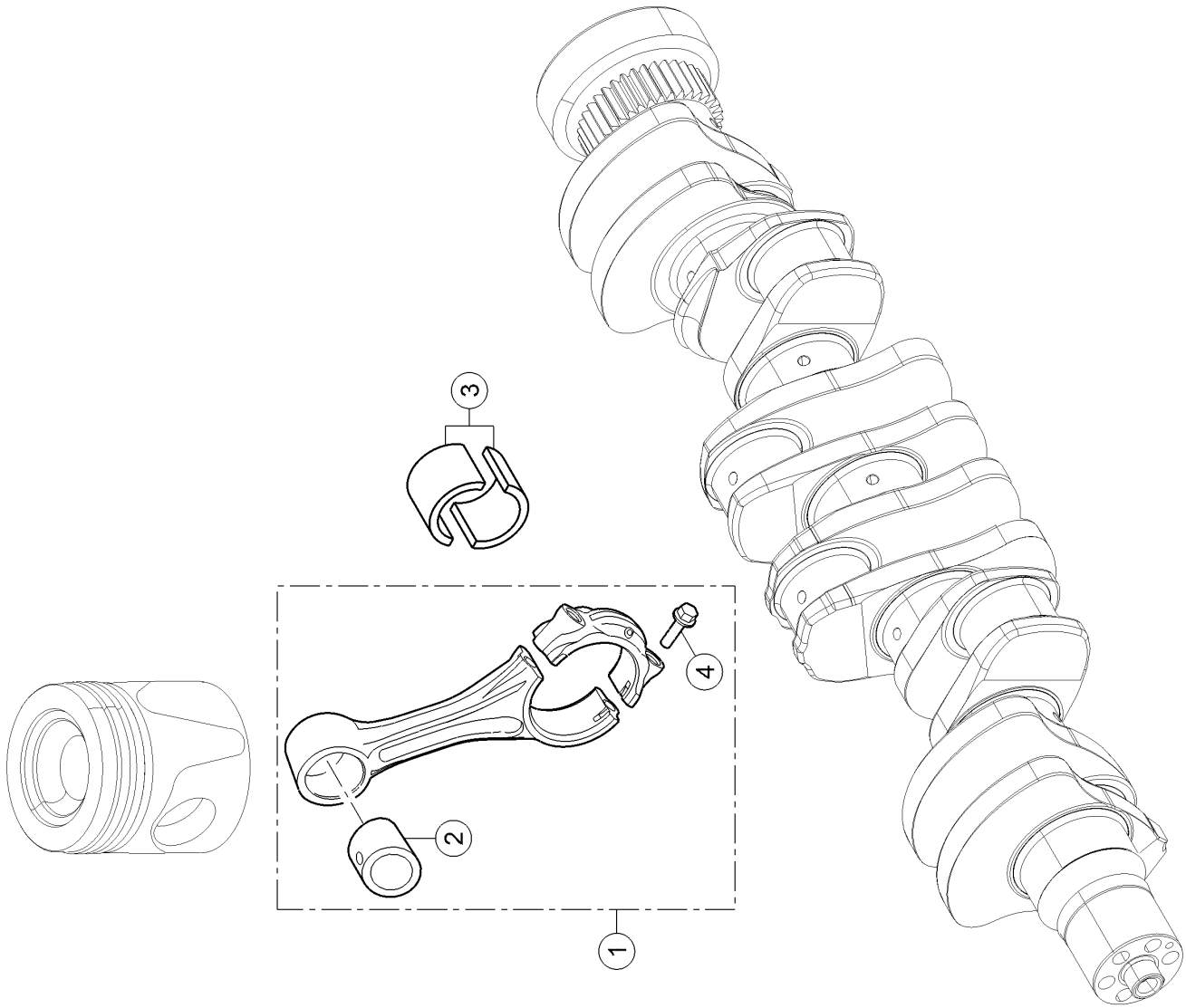
**1) machine no.** + up to A4100334  
 - A4100331  
 + A4100341  
 + A4100345  
 + A4100347  
 + A4100348  
 + A4100351  
 + A4100353  
 + A4100354  
 + A4100359

**2) machine no.** + A4100331  
 + from A4100335  
 - A4100341  
 - A4100345  
 - A4100347  
 - A4100348  
 - A4100351  
 - A4100353  
 - A4100354  
 - A4100359



**100 CYLINDER LINER, PISTON**

<b>Pos.</b>	<b>Part No.</b>	<b>Description</b>	<b>Dimension</b>	<b>Quantity</b>	<b>Conditions</b>
1	<b>00 1149 530 0</b>	PLUNGER		6	
2	<b>00 1158 828 0</b>	ENGINE PISTON RING		6	
3	<b>00 1149 532 0</b>	INT RETAINING RING		12	
4	<b>00 1149 533 0</b>	AXLE		6	



**120 CONNECTING ROD, CONNECTING ROD BEARINGS**

Pos.	Part No.	Description	Dimension	Quantity	Conditions
1	<b>00 1149 550 0</b>	ROD (ENGINE)		6	1)
1	<b>00 1166 560 0</b>	ROD (ENGINE)		6	2)
2	<b>00 1149 551 0</b>	RING		6	
3	<b>00 1152 896 0</b>	SET OF BEARING BUSHES		6	3)
3	<b>00 1150 903 0</b>	SET OF BEARING BUSHES		6	4)
3	<b>00 1150 904 0</b>	SET OF BEARING BUSHES		6	5)
4	<b>60 0503 108 9</b>	SCREW		12	

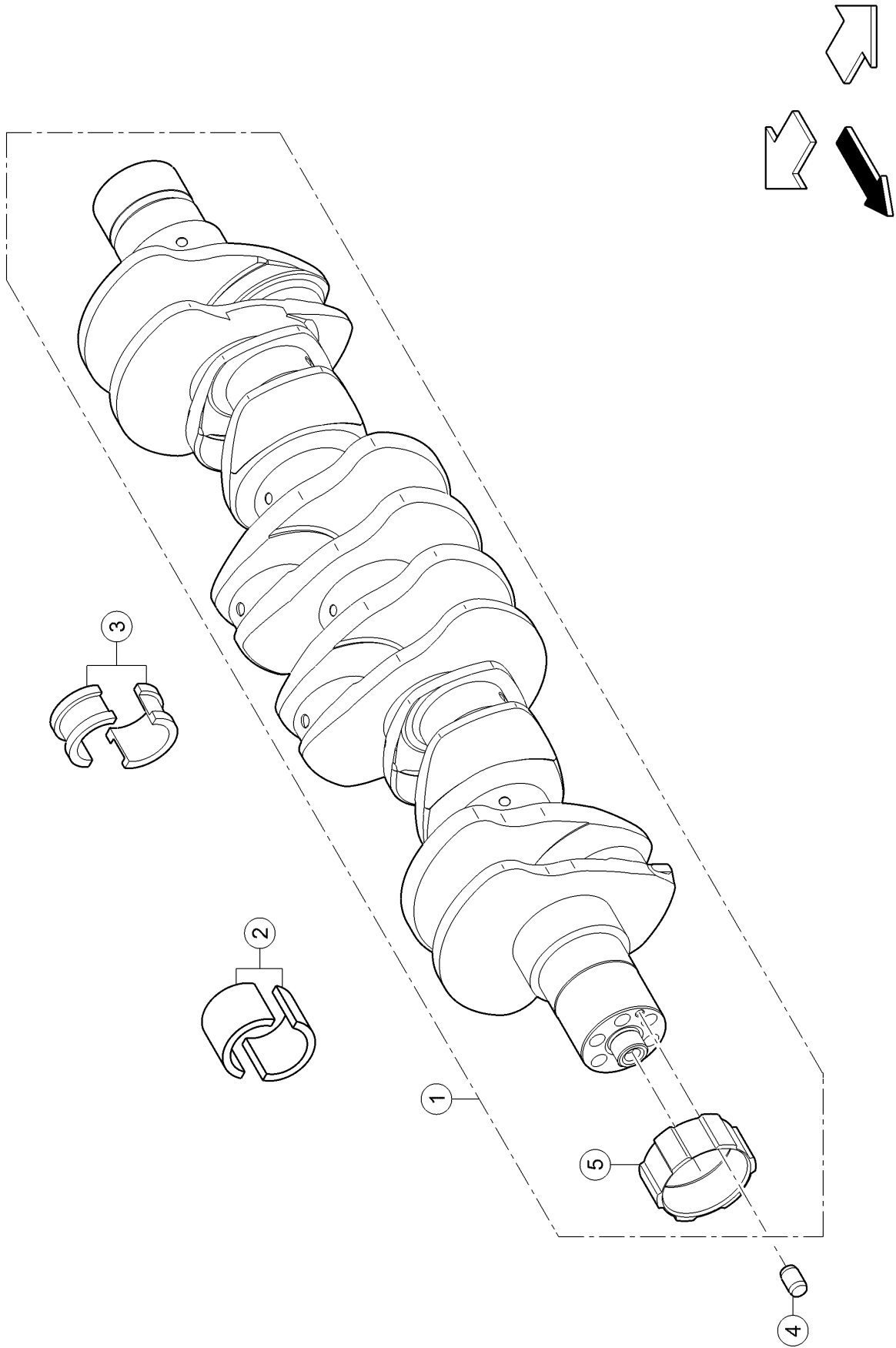
**1) machine no.** + up to A4103016  
 - A4102995  
 - A4102997  
 - A4102998  
 - A4103002  
 - A4103003  
 - A4103005  
 - A4103009  
 - A4103010  
 - A4103011

**2) machine no.** + up to A4103016  
 - A4102995  
 - A4102997  
 - A4102998  
 - A4103002  
 - A4103003  
 - A4103005  
 - A4103009  
 - A4103010  
 - A4103011

**3) Remarks** STANDARD

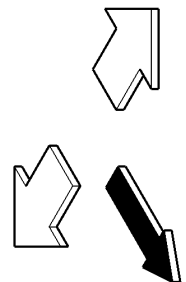
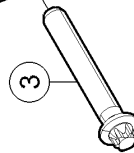
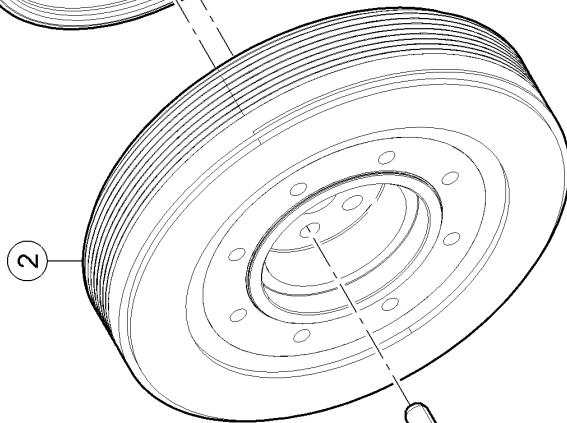
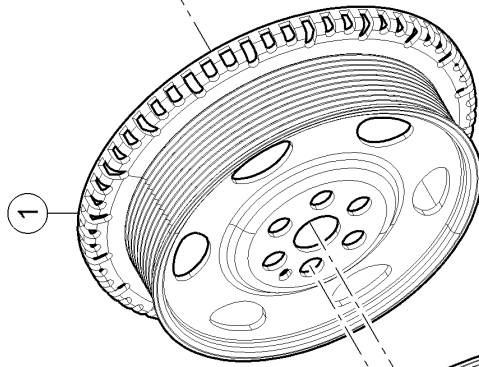
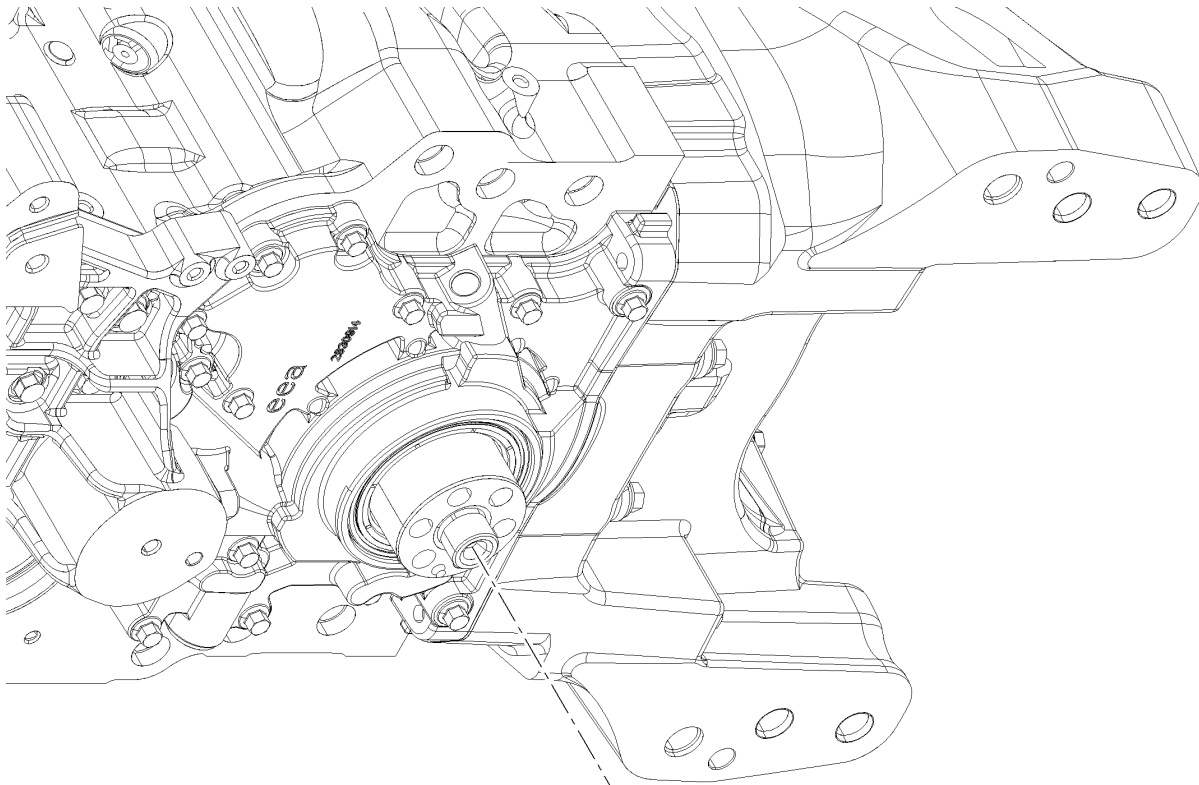
**4) Remarks** -0,250

**5) Remarks** -0,500



**140 CRANKSHAFT**

<b>Pos.</b>	<b>Part No.</b>	<b>Description</b>	<b>Dimension</b>	<b>Quantity</b>	<b>Conditions</b>
1	<b>00 1149 561 0</b>	CRANKSHAFT		1	
2	<b>00 1149 562 0</b>	SET OF BEARING BUSHES		6	1)
2	<b>00 1150 898 0</b>	SET OF BEARING BUSHES		6	2)
2	<b>00 1150 900 0</b>	SET OF BEARING BUSHES		6	3)
3	<b>00 1149 563 0</b>	SET OF BEARING BUSHES		1	1)
3	<b>00 1150 901 0</b>	SET OF BEARING BUSHES		1	2)
3	<b>00 1150 902 0</b>	SET OF BEARING BUSHES		1	3)
4	<b>60 0503 110 4</b>	CENTRING PIN		1	
5	<b>00 1139 671 0</b>	BUSHING		1	
<b>1)</b>	<b>Remarks</b>		STANDARD		
<b>2)</b>	<b>Remarks</b>		-0,250		
<b>3)</b>	<b>Remarks</b>		-0,500		

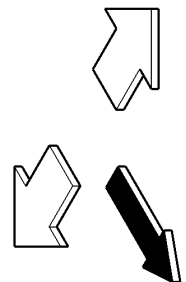
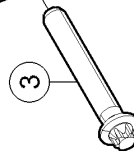
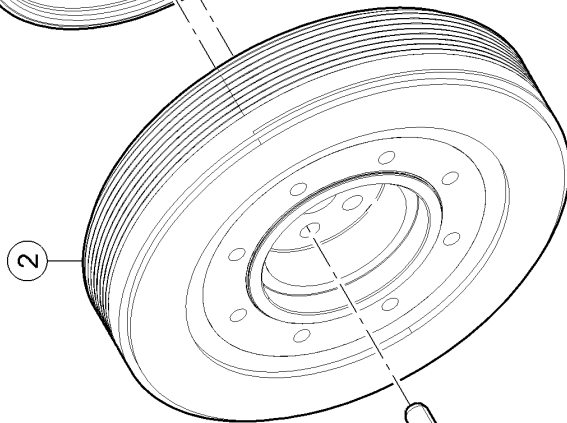
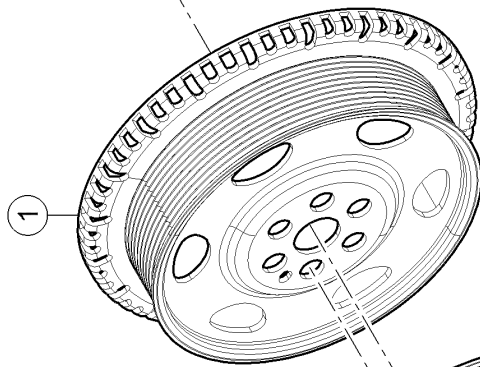
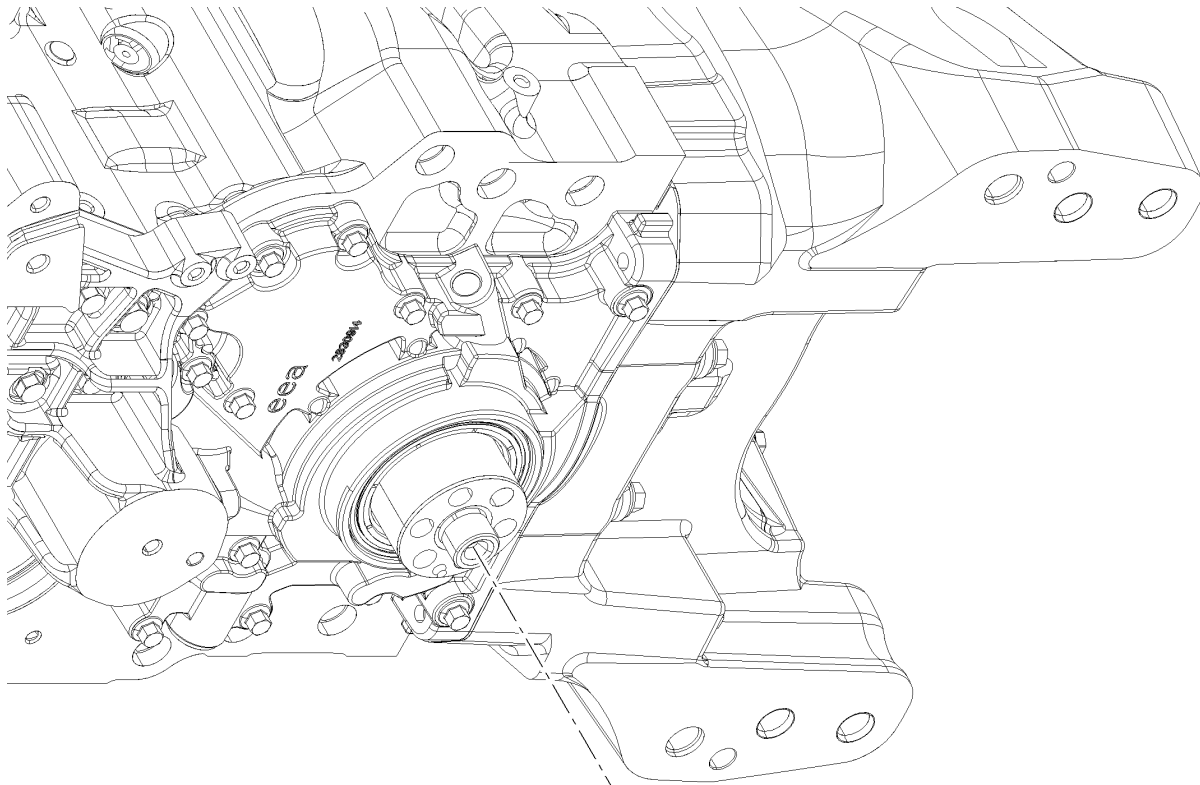


**160 CRANKSHAFT PULLEY WHEEL 1)**

Pos.	Part No.	Description	Dimension	Quantity	Conditions
1	<b>00 1149 566 0</b>	PULLEY		1	
2	<b>00 1149 567 0</b>	HUB		1	
3	<b>60 0503 104 3</b>	SCREW		6	

**1) Equipment**

TJ_P02_0411	205 hp rated output, 229 hp max. output, ECE R 120
TJ_P02_0412	225 hp rated output, 235 hp max. output, ECE R 120
TJ_P02_0413	250 hp rated output, 264 hp max. output, ECE R 120
TJ_P02_0414	270 hp rated output, 295 hp max. output, ECE R 120
TJ_P02_0433	250 hp rated output, 264 hp max. output, ECE R 120
TJ_P02_0434	270 hp rated output, 295 hp max. output, ECE R 120

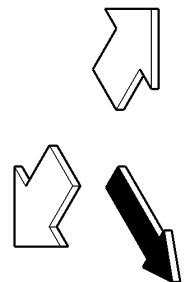
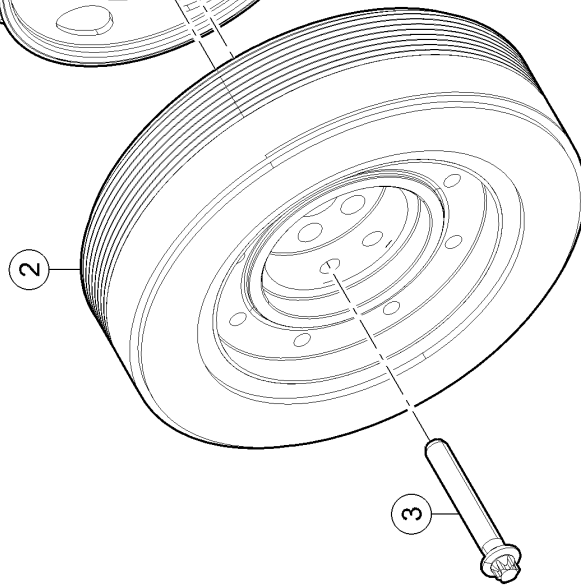
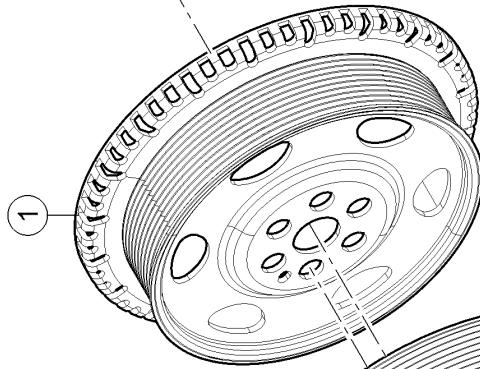
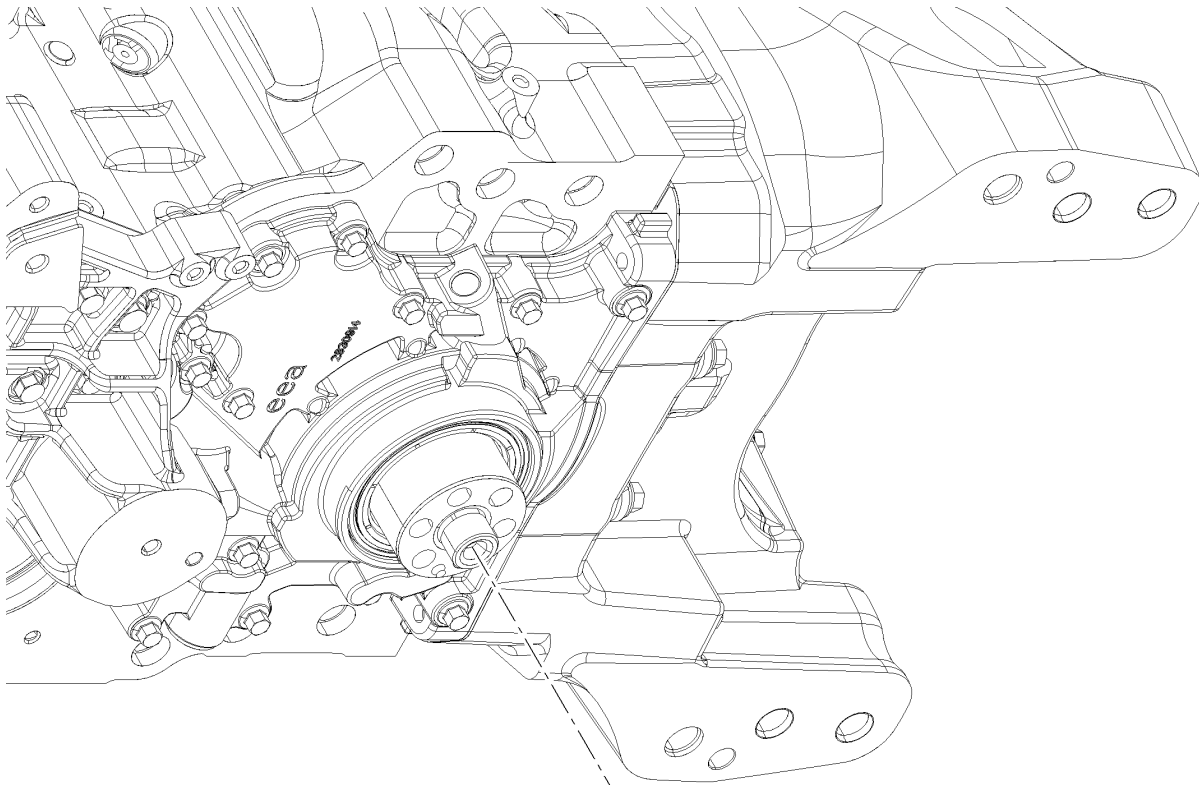


**160 CRANKSHAFT PULLEY WHEEL 1)**

Pos.	Part No.	Description	Dimension	Quantity	Conditions
1	<b>00 1149 566 0</b>	PULLEY		1	
2	<b>00 1149 567 0</b>	HUB		1	
3	<b>60 0503 104 3</b>	SCREW		6	

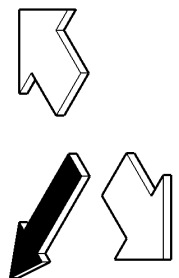
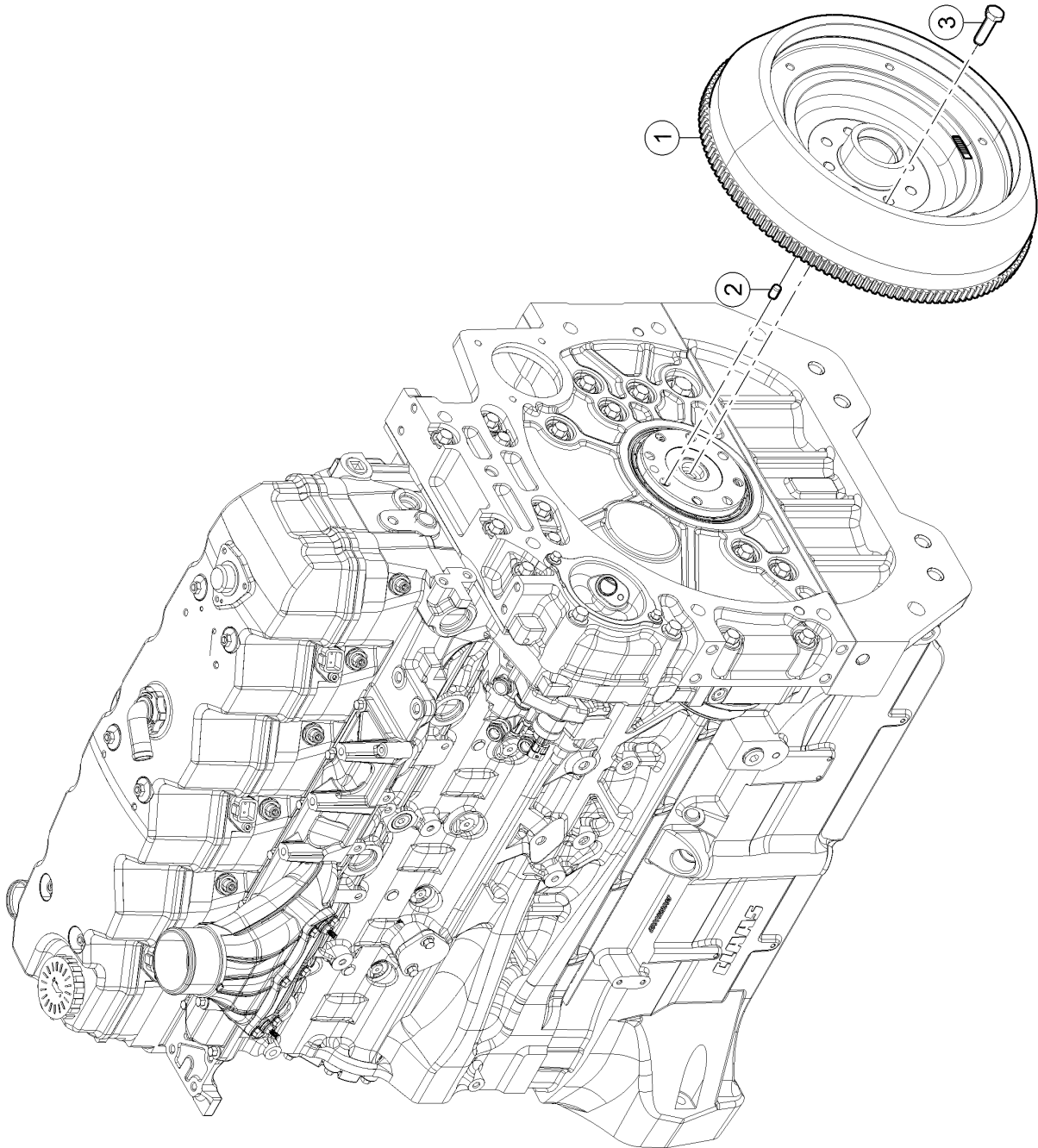
**1) Equipment**

TJ_P02_0415	0415_ECER120 205 nom/215 mx NA
TJ_P02_0416	225 hp rated output, 235 hp max. output, ECE R 120
TJ_P02_0417	0417_ECER120 250 hp nom/264 mx
TJ_P02_0437	250 hp rated output, 264 hp max. output, ECE R 120



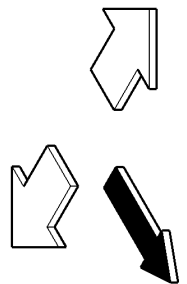
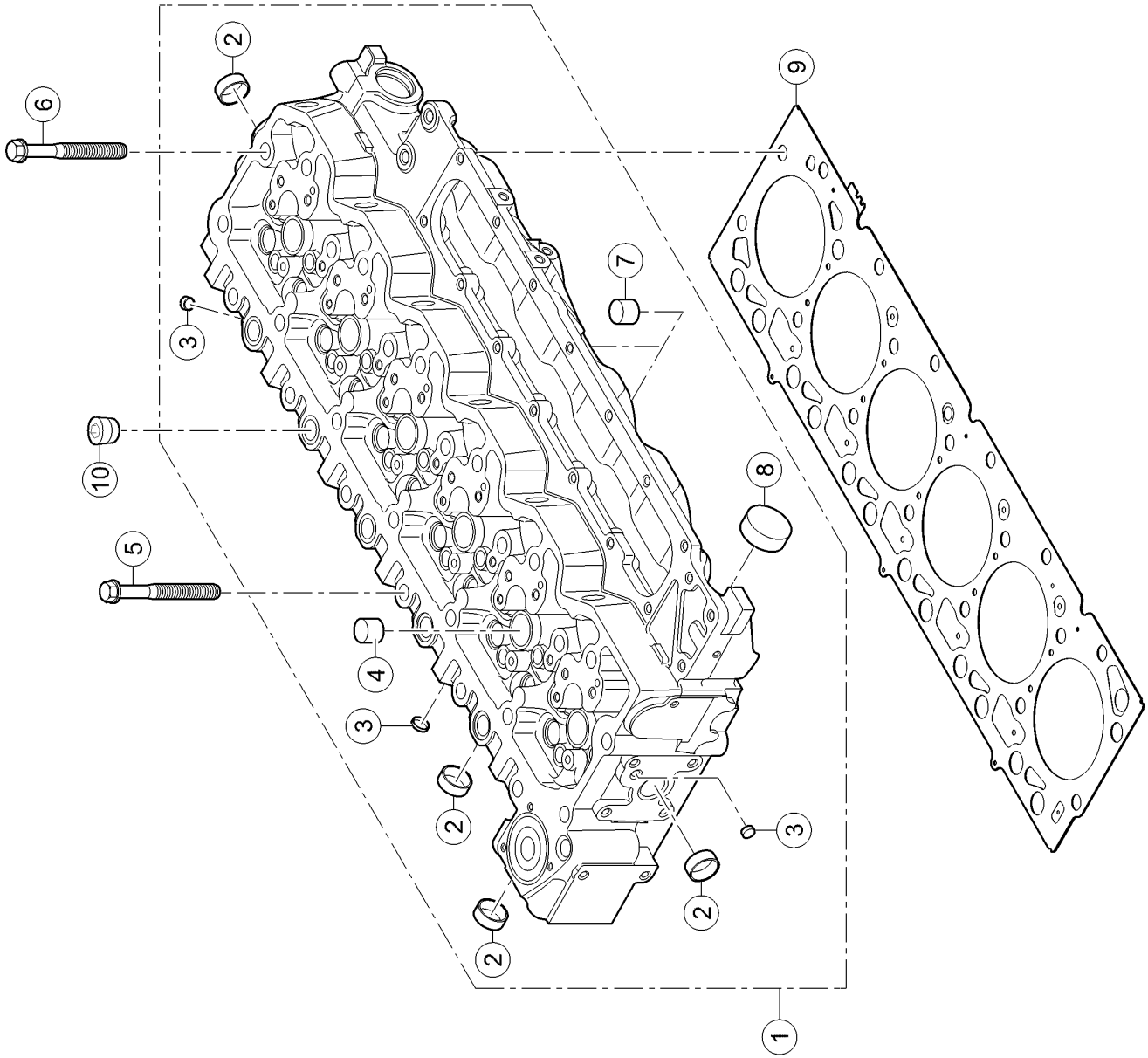
**160 CRANKSHAFT PULLEY WHEEL 1)**

Pos.	Part No.	Description	Dimension	Quantity	Conditions
1	<b>00 1159 940 0</b>	PULLEY		1	
2	<b>00 1159 941 0</b>	HUB		1	
3	<b>60 0503 104 3</b>	SCREW		6	
<b>1) Equipment</b>					
		TJ_P02_0418	0418_ECER120 270 hp nom/295 mx		
		TJ_P02_0438	270 hp rated output, 295 hp max. output, ECE R 120		



**220 FLYWHEEL**

<b>Pos.</b>	<b>Part No.</b>	<b>Description</b>	<b>Dimension</b>	<b>Quantity</b>	<b>Conditions</b>
1	<b>00 1151 080 0</b>	FLYWHEEL		1	
2	<b>60 0503 111 0</b>	CENTRING PIN		1	
3	<b>00 1149 569 0</b>	SCREW		8	



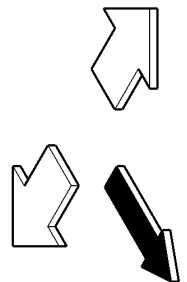
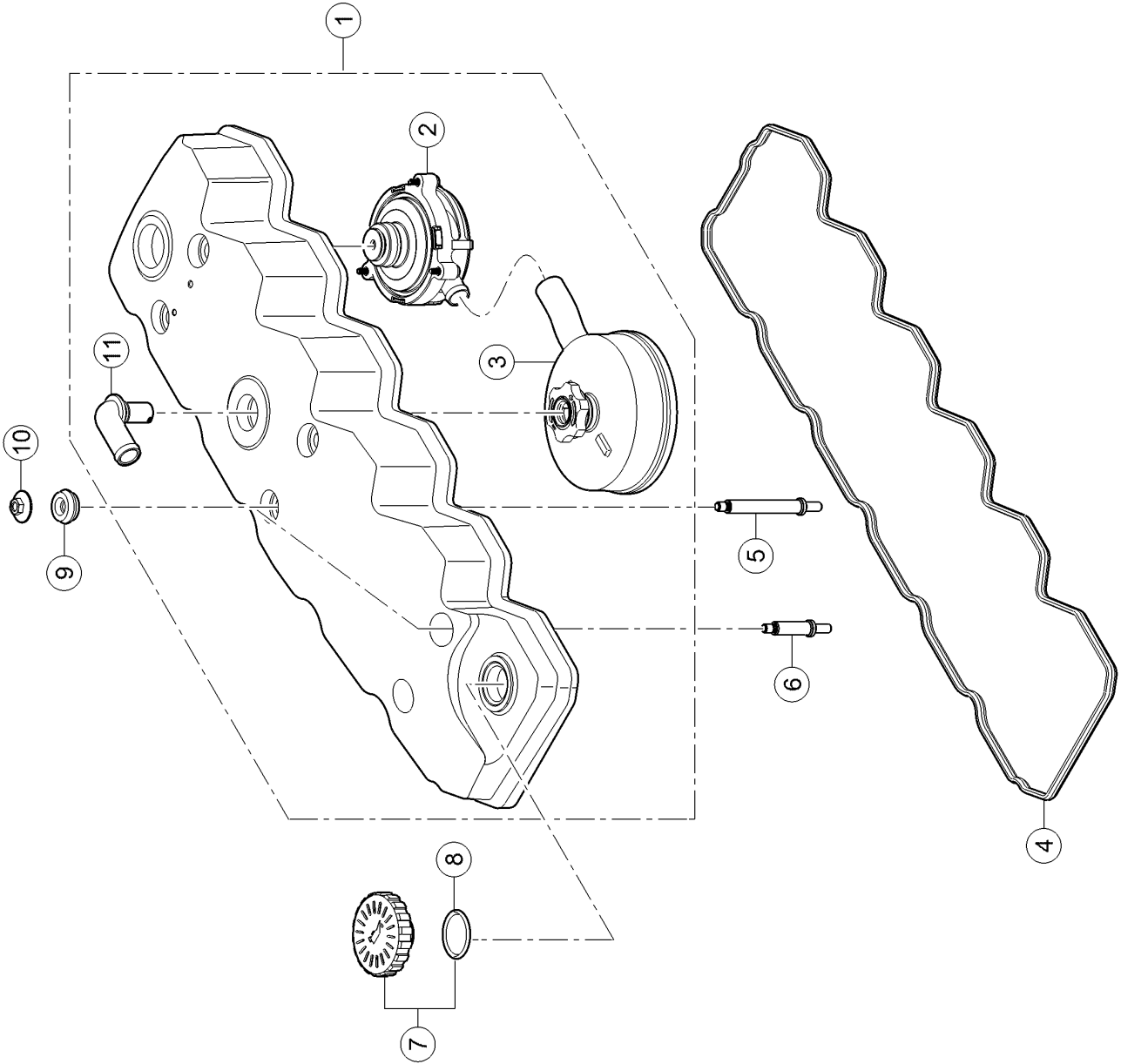
**100 CYLINDER HEAD**

<b>Pos.</b>	<b>Part No.</b>	<b>Description</b>	<b>Dimension</b>	<b>Quantity</b>	<b>Conditions</b>
1	<b>00 1149 571 0</b>	CYLINDER HEAD		1	
2	<b>00 1139 905 0</b>	PLUG		13	
3	<b>00 1149 572 0</b>	PLUG		7	
4	<b>60 0503 099 1</b>	PLUG		11	
5	<b>00 1149 573 0</b>	SCREW		12	
6	<b>00 1149 574 0</b>	SCREW		14	
7	<b>00 1149 575 0</b>	PLUG		1	
8	<b>00 1149 576 0</b>	PLUG		2	
9	<b>00 1149 577 0</b>	CYLINDER HEAD GASKET		1	1)
9	<b>00 1160 918 0</b>	CYLINDER HEAD GASKET		1	2)
10	<b>60 0503 113 1</b>	PLUG		4	
<b>1)</b>	<b>Remarks</b>		ép.1,25mm		
<b>2)</b>	<b>Remarks</b>		ép.1,15mm		



**100 CYLINDER HEAD**

<b>Pos.</b>	<b>Part No.</b>	<b>Description</b>	<b>Dimension</b>	<b>Quantity</b>	<b>Conditions</b>
1	<b>00 1150 658 1</b>	CYLINDER HEAD		1	



**120 CYLINDER HEAD COVER 1)**

Pos.	Part No.	Description	Dimension	Quantity	Conditions
1	<b>00 1155 861 0</b>	ROCKER COVER		1	2)
1	<b>00 1164 148 0</b>	ROCKER COVER		1	3)
2	<b>00 1149 659 0</b>	HYDRAULIC VALVE		1	2)
2	<b>00 1164 149 0</b>	HYDRAULIC VALVE		1	3)
3	<b>00 1149 660 0</b>	OIL VAPOUR FILTER		1	2)
3	<b>00 1164 150 0</b>	OIL VAPOUR FILTER		1	3)
4	<b>00 1149 661 0</b>	SEAL		1	
5	<b>00 1149 662 0</b>	STUD BOLT		4	
6	<b>00 1149 663 0</b>	STUD BOLT		2	
7	<b>00 1149 664 0</b>	PLUG		1	
8	<b>00 1149 665 0</b>	O-RING		1	
9	<b>00 1149 666 0</b>	SEALING RING		6	
10	<b>00 1149 667 0</b>	PLUG		6	
11	<b>00 1149 668 0</b>	TUBE		1	

**1) Equipment**

TJ_P02_0411	205 hp rated output, 229 hp max. output, ECE R 120
TJ_P02_0412	225 hp rated output, 235 hp max. output, ECE R 120
TJ_P02_0413	250 hp rated output, 264 hp max. output, ECE R 120
TJ_P02_0414	270 hp rated output, 295 hp max. output, ECE R 120
TJ_P02_0433	250 hp rated output, 264 hp max. output, ECE R 120
TJ_P02_0434	270 hp rated output, 295 hp max. output, ECE R 120

**2) machine no.**

+ up to A4102485  
 - A4102481  
 - A4102483  
 - A4102484  
 + A4102487  
 + A4102504

**3) machine no.**

+ A4102481  
 + A4102483  
 + A4102484  
 + from A4102486  
 - A4102487  
 - A4102504



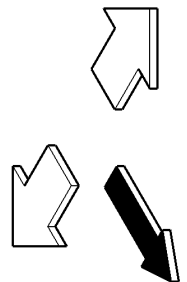
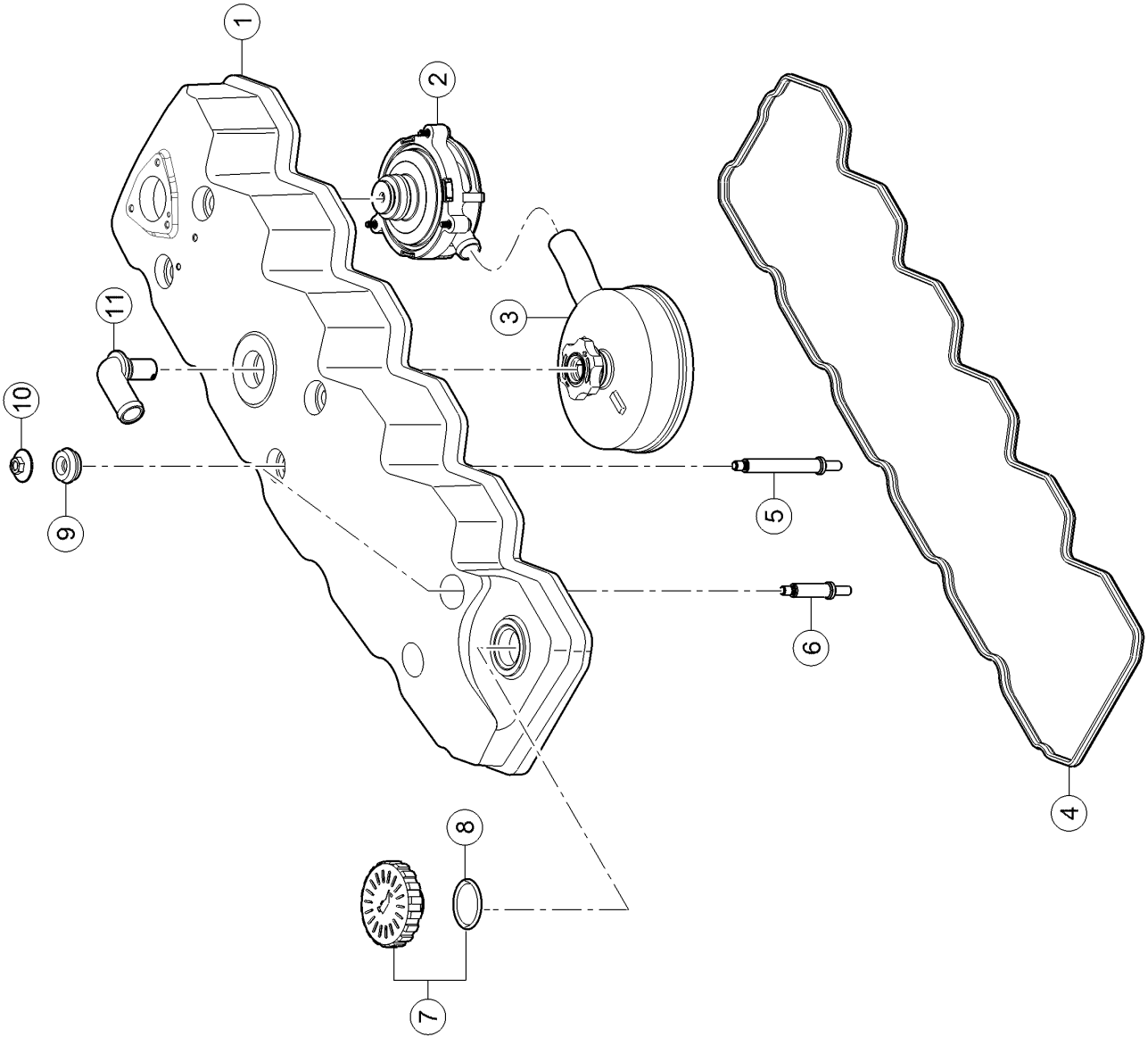
**Suggest:**

**For more complete manuals. Please go to the home page.**

**<https://www.ebooklibonline.com>**

**If the above button click is invalid. Please download this document first, and then click the above link to download the complete manual.**

**Thank you so much for reading**



**120 CYLINDER HEAD COVER 1)**

Pos.	Part No.	Description	Dimension	Quantity	Conditions
1	<b>00 1159 927 0</b>	ROCKER COVER		1	
2	<b>00 1149 659 0</b>	HYDRAULIC VALVE		1	
3	<b>00 1159 929 0</b>	OIL VAPOUR FILTER		1	2)
3	<b>00 1164 150 0</b>	OIL VAPOUR FILTER		1	3)
4	<b>00 1149 661 0</b>	SEAL		1	
5	<b>00 1149 662 0</b>	STUD BOLT		4	
6	<b>00 1149 663 0</b>	STUD BOLT		2	
7	<b>00 1149 664 0</b>	PLUG		1	
8	<b>00 1149 665 0</b>	O-RING		1	
9	<b>00 1149 666 0</b>	SEALING RING		6	
10	<b>00 1149 667 0</b>	PLUG		6	
11	<b>00 1149 668 0</b>	TUBE		1	

**1) Equipment**

TJ_P02_0415	0415_ECER120 205 nom/215 mx NA
TJ_P02_0416	225 hp rated output, 235 hp max. output, ECE R 120
TJ_P02_0417	0417_ECER120 250 hp nom/264 mx
TJ_P02_0418	0418_ECER120 270 hp nom/295 mx
TJ_P02_0437	250 hp rated output, 264 hp max. output, ECE R 120
TJ_P02_0438	270 hp rated output, 295 hp max. output, ECE R 120

**2) machine no.**

+ up to A4102485  
 - A4102481  
 - A4102483  
 - A4102484  
 + A4102487  
 + A4102504

**3) machine no.**

+ A4102481  
 + A4102483  
 + A4102484  
 + from A4102486  
 - A4102487  
 - A4102504

**<https://www.ebooklibonline.com>**

Hello dear friend!

Thank you very much for reading.

Enter the link into your browser.

The full manual is available for immediate download.

**<https://www.ebooklibonline.com>**