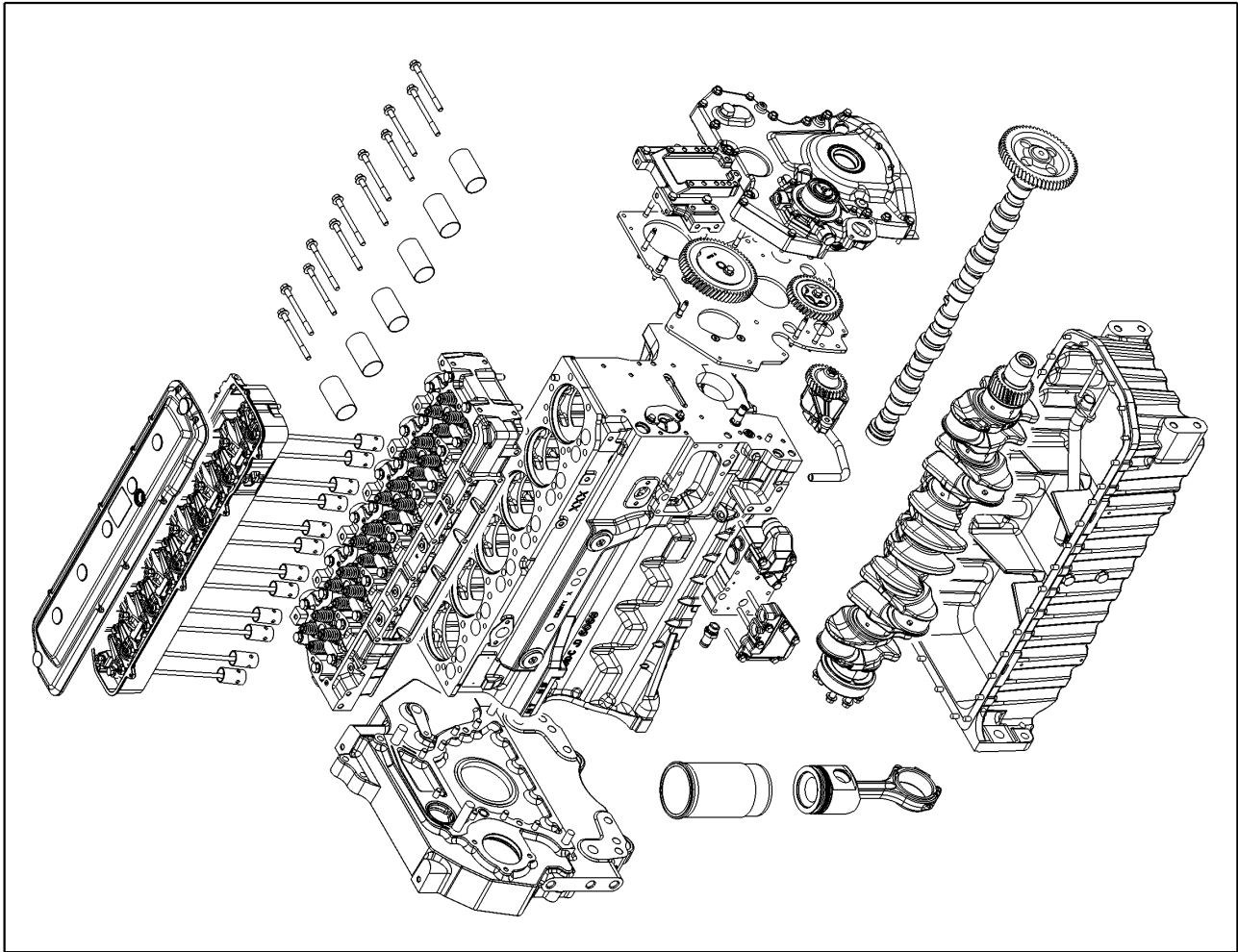


010 COMPLETE ENGINE 1)

Pos.	Part No.	Description	Dimension	Quantity	Conditions
1	00 1100 801 0	ENGINE	124 KW	1	2)
1	00 1100 803 0	ENGINE	139 KW	1	3)
1	00 1100 805 1	ENGINE		1	4)
1)	Equipment				
	Equipment	TJ_060_0003	Without boost. Emission level TIER 3 HEXASHIFT		
		TJ_064_0000	HEXASHIFT gearbox		
		TJ_064_0001	HEXACTIV automatic gearbox		
		TJ_101_0002	24/24 4 range 6 powershift transmission		
2)	Homologationtype			+ 4702 163Ch	
3)	Homologationtype			+ 4712 183Ch	
4)	Homologationtype			+ 4722 196Ch	



1

<https://www.ebooklibonline.com>

Hello dear friend!

Thank you very much for reading.

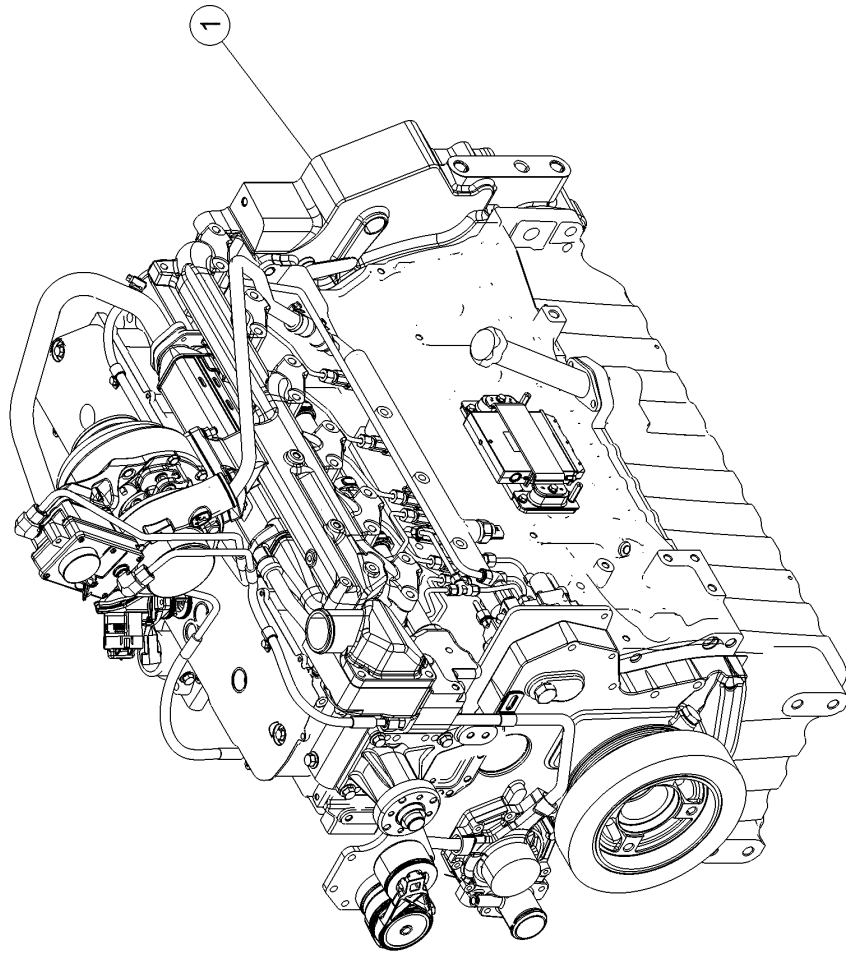
Enter the link into your browser.

The full manual is available for immediate download.

<https://www.ebooklibonline.com>

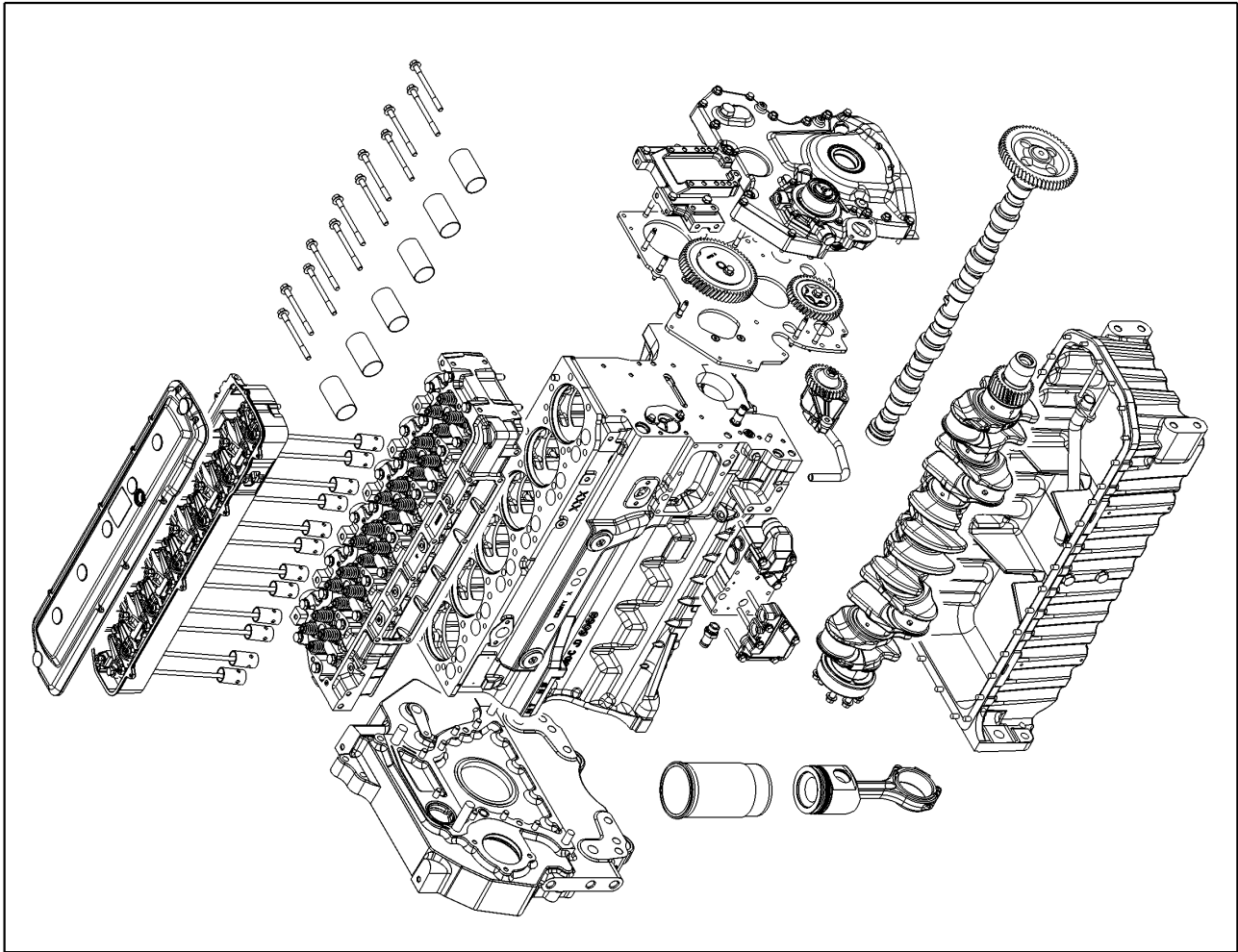
010 COMPLETE ENGINE 1)

Pos.	Part No.	Description	Dimension	Quantity	Conditions
1	00 1150 446 0	LONG BLOCK ENGINE		1	2)
1	00 1150 448 0	LONG BLOCK ENGINE		1	3)
1)	Equipment				
	Equipment	TJ_060_0003	Without boost. Emission level TIER 3 HEXASHIFT		
		TJ_064_0000	HEXASHIFT gearbox		
		TJ_064_0001	HEXACTIV automatic gearbox		
		TJ_101_0002	24/24 4 range 6 powershift transmission		
2)	Homologationtype			+ 4702	
3)	Homologationtype			+ 4712 + 4722	



010 COMPLETE ENGINE 1)

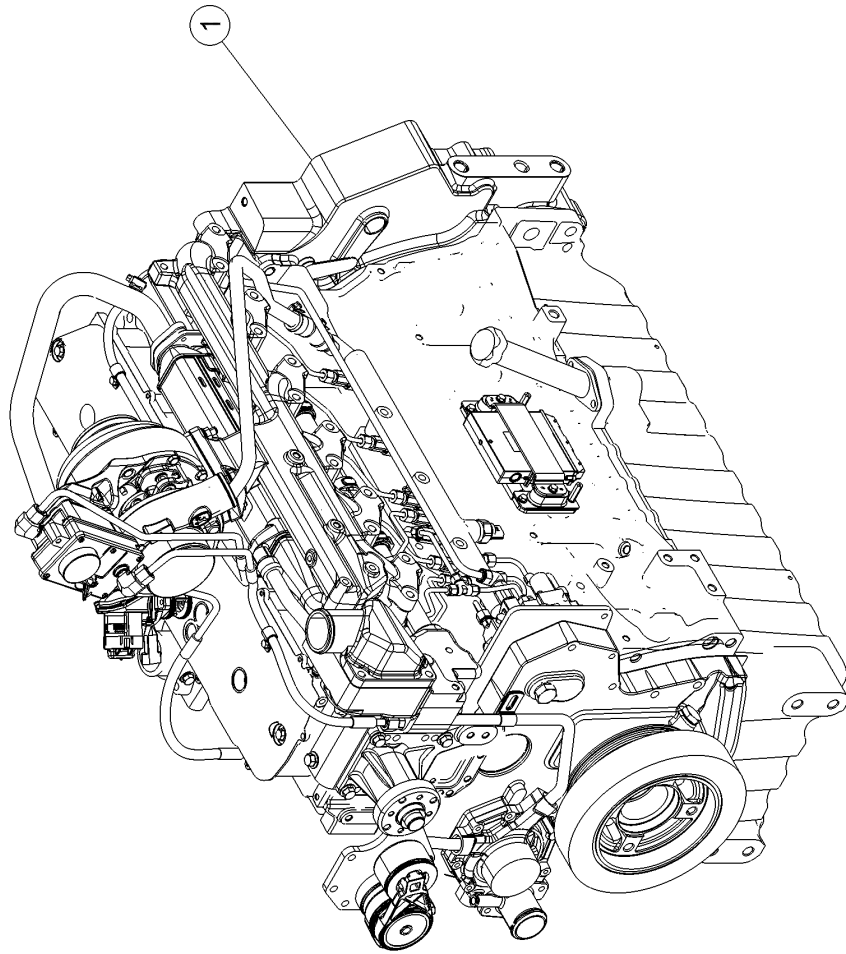
Pos.	Part No.	Description	Dimension	Quantity	Conditions
1	00 1114 481 1	ENGINE		1	2)
1	00 1114 482 1	ENGINE		1	3)
1	00 1100 806 1	ENGINE		1	4)
1	00 1100 807 1	ENGINE		1	5)
1)	Equipment				
	Equipment	TJ_060_0004	With boost. Emissions level TIER 3		
		TJ_064_0000	HEXASHIFT		
		TJ_064_0001	HEXASHIFT gearbox		
		TJ_101_0002	HEXACTIV automatic gearbox		
			24/24 4 range 6 powershift transmission		
2)	Homologationtype			+ 4702	
				165Ch	
3)	Homologationtype			+ 4712	
				185Ch	
4)	Homologationtype			+ 4722	
				205Ch	
5)	Homologationtype			+ 4732	
				225Ch	



1

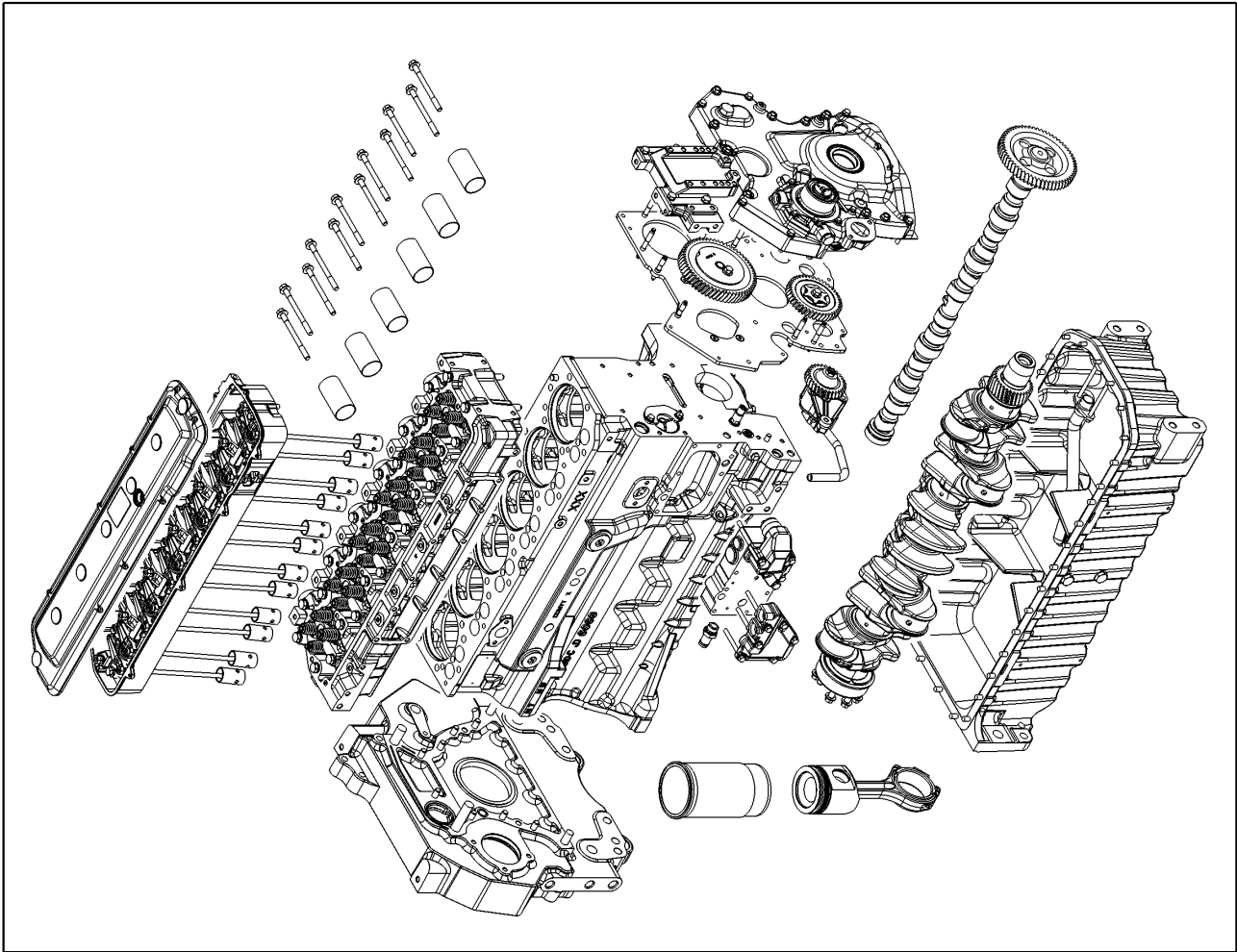
010 COMPLETE ENGINE 1)

Pos.	Part No.	Description	Dimension	Quantity	Conditions
1	00 1150 446 0	LONG BLOCK ENGINE		1	2)
1	00 1150 448 0	LONG BLOCK ENGINE		1	3)
1)	Equipment				
	Equipment	TJ_060_0004	With boost. Emissions level TIER 3 HEXASHIFT		
		TJ_064_0000	HEXASHIFT gearbox		
		TJ_064_0001	HEXACTIV automatic gearbox		
		TJ_101_0002	24/24 4 range 6 powershift transmission		
2)	Homologationtype			+ 4702	
3)	Homologationtype			+ 4712 + 4722 + 4732	



010 COMPLETE ENGINE 1)

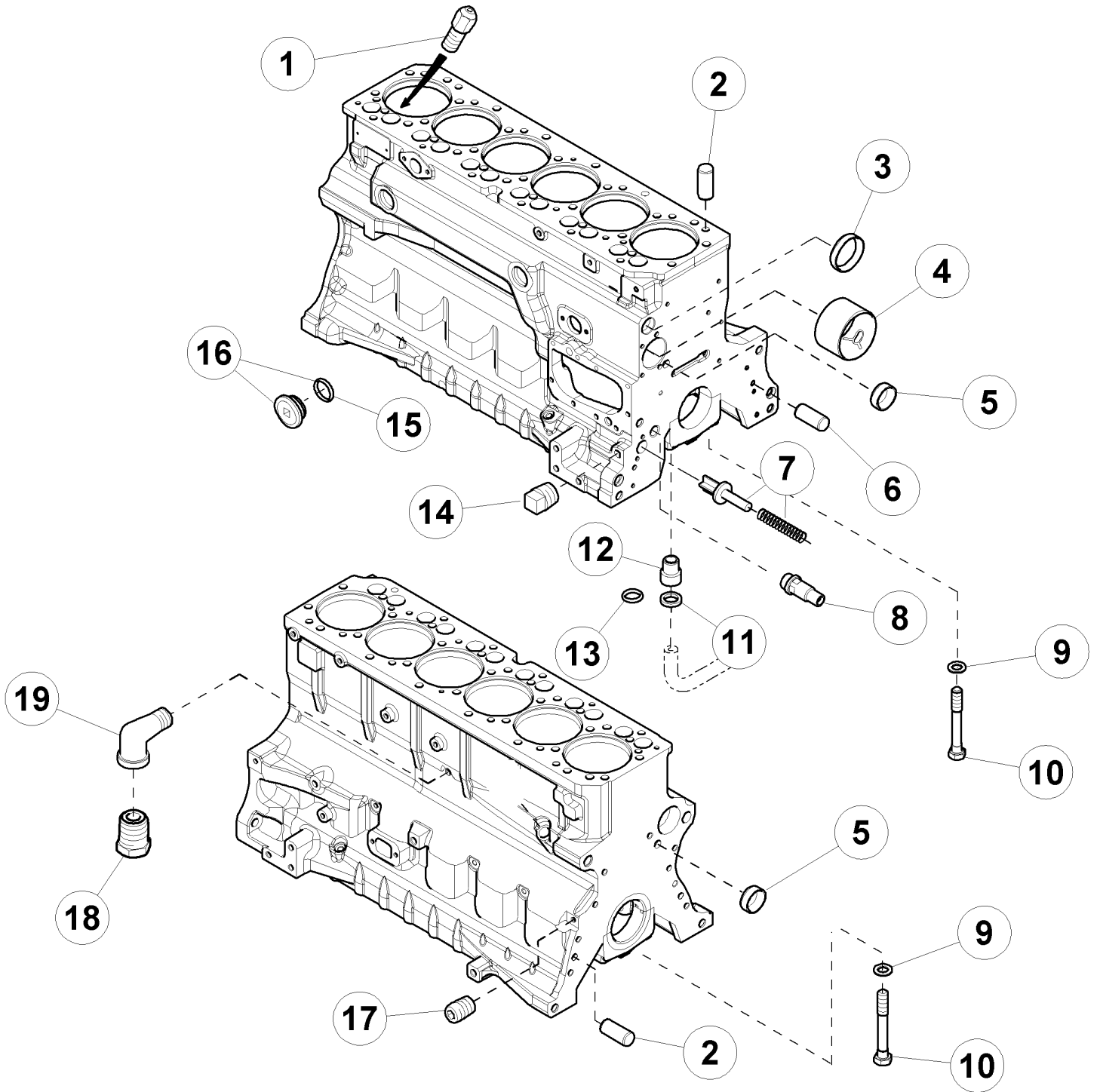
Pos.	Part No.	Description	Dimension	Quantity	Conditions
1	00 1108 916 1	ENGINE		1	2)
1	00 1108 494 1	ENGINE		1	3)
1	00 1108 495 1	ENGINE		1	4)
1)	Equipment				
	Equipment	TJ_060_0004	With boost. Emissions level TIER 3		
		TJ_064_0002	Management of the CVT transmission		
		TJ_101_0006	CVT transmission		
2)	Homologationtype			+ 4702	
3)	Homologationtype			+ 4712	
4)	Homologationtype			+ 4722	



1

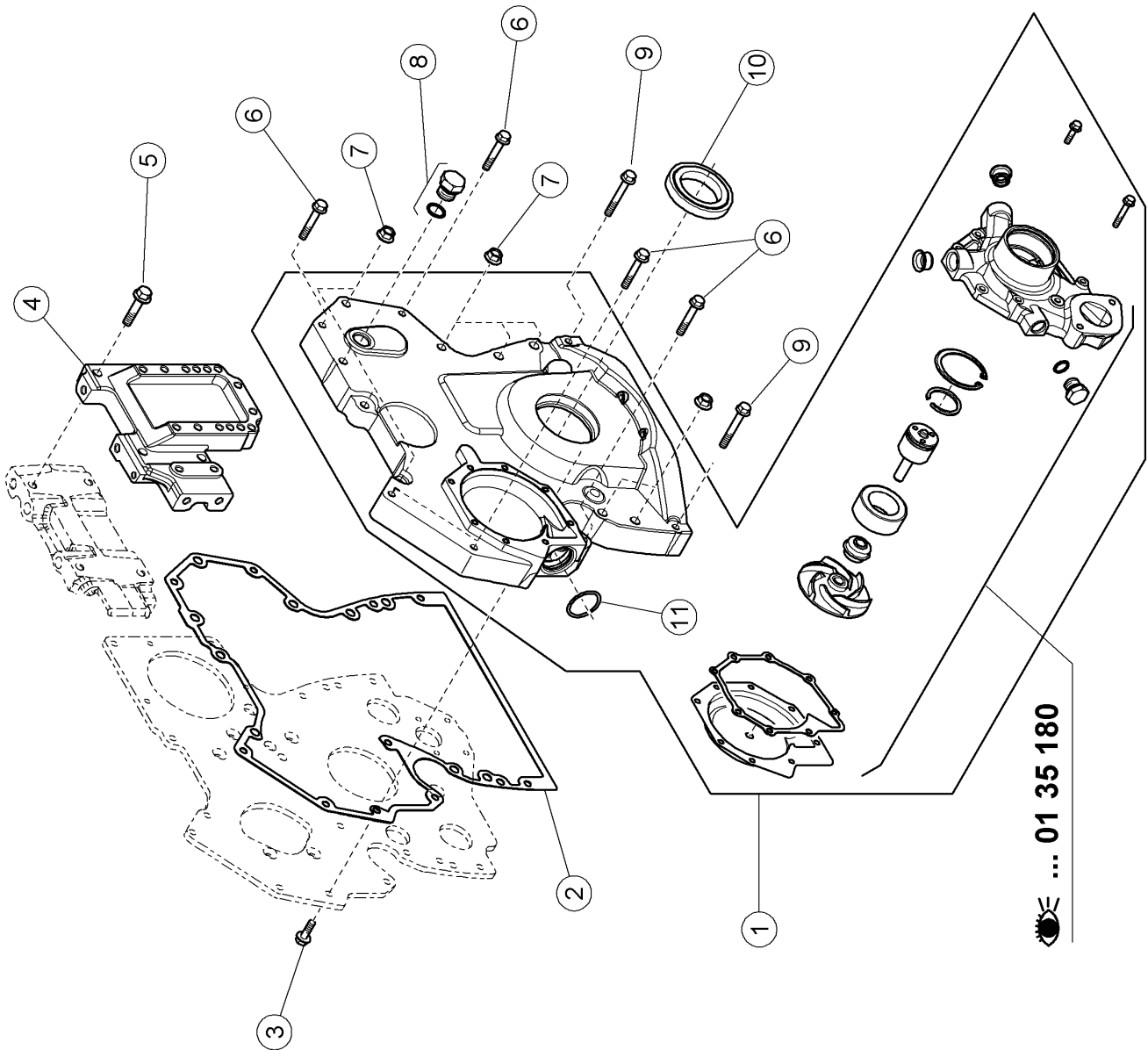
010 COMPLETE ENGINE 1)

Pos.	Part No.	Description	Dimension	Quantity	Conditions
1	00 1150 446 0	LONG BLOCK ENGINE		1	2)
1	00 1150 448 0	LONG BLOCK ENGINE		1	3)
1)	Equipment				
	Equipment	TJ_060_0004	With boost. Emissions level TIER 3		
		TJ_064_0002	Management of the CVT transmission		
		TJ_101_0006	CVT transmission		
2)	Homologationtype			+ 4702	
3)	Homologationtype			+ 4712	
				+ 4722	



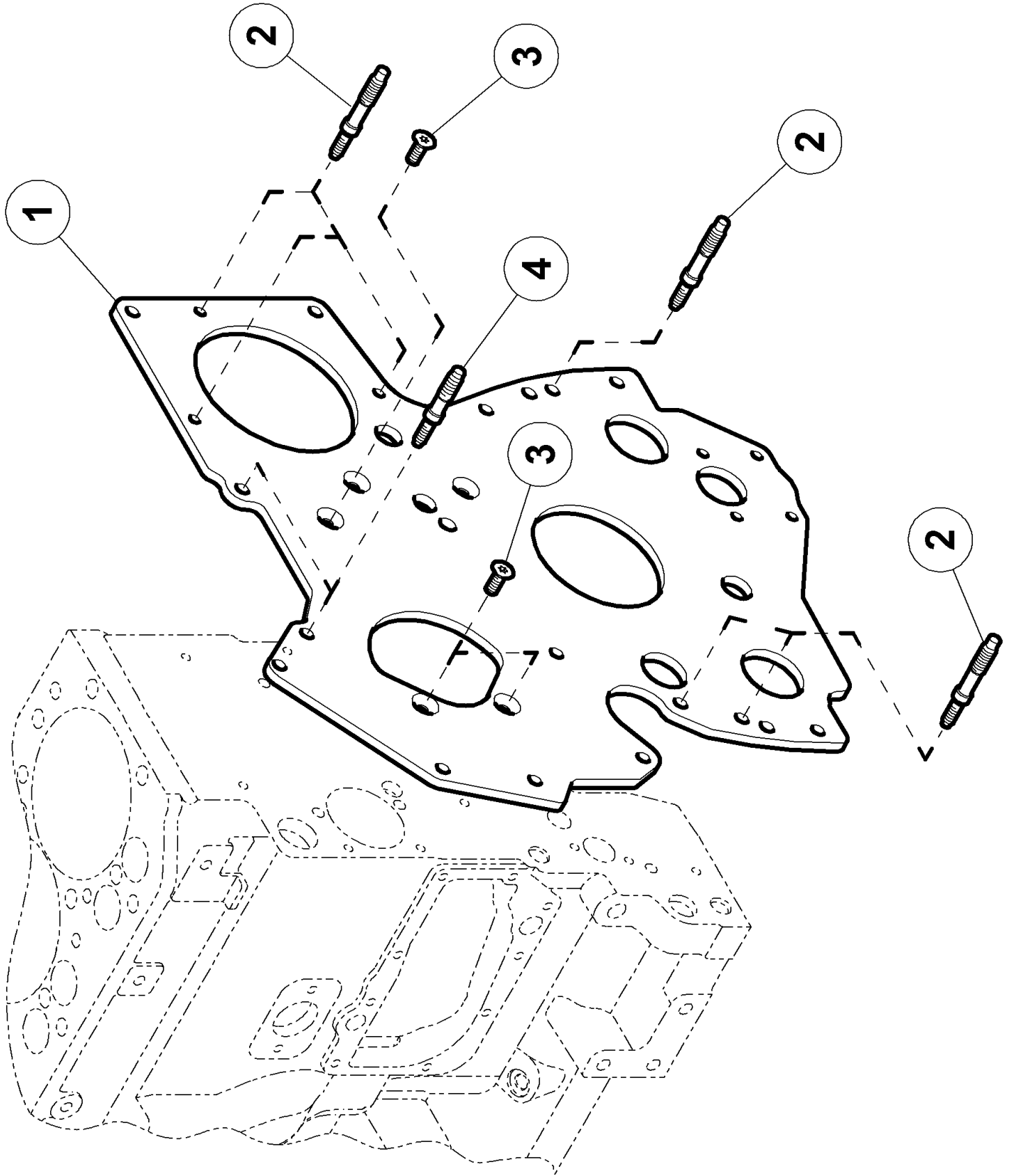
100 CRANKCASE

Pos.	Part No.	Description	Dimension	Quantity	Conditions
1	60 0502 143 6	SPRAY NOZZLE		6	
2	60 0501 317 4	CENTRING PIN		2	
3	60 0502 143 9	BLANKING COVER		1	
4	60 0501 294 1	BEARING		1	
5	60 0501 319 8	BLANKING COVER		2	
6	60 0501 319 6	CENTRING PIN		1	
7	60 0501 402 9	VALVE		1	
8	60 0502 869 1	VALVE		1	
9	60 0502 143 7	WASHER	13X22X2,5	14	
10	60 0501 320 6	SCREW		14	
11	60 0501 334 1	O-RING		1	
12	60 0501 597 2	BUSHING		1	
13	60 0501 320 3	O-RING		1	
14	60 0501 597 1	LOCK		1	
15	60 0502 339 4	O-RING		1	
16	60 0502 905 2	PLUG		1	
17	60 0502 144 0	LOCK		1	
18	60 0502 665 3	PLUG		1	
19	00 1132 468 0	ELBOW CONNECTOR		1	



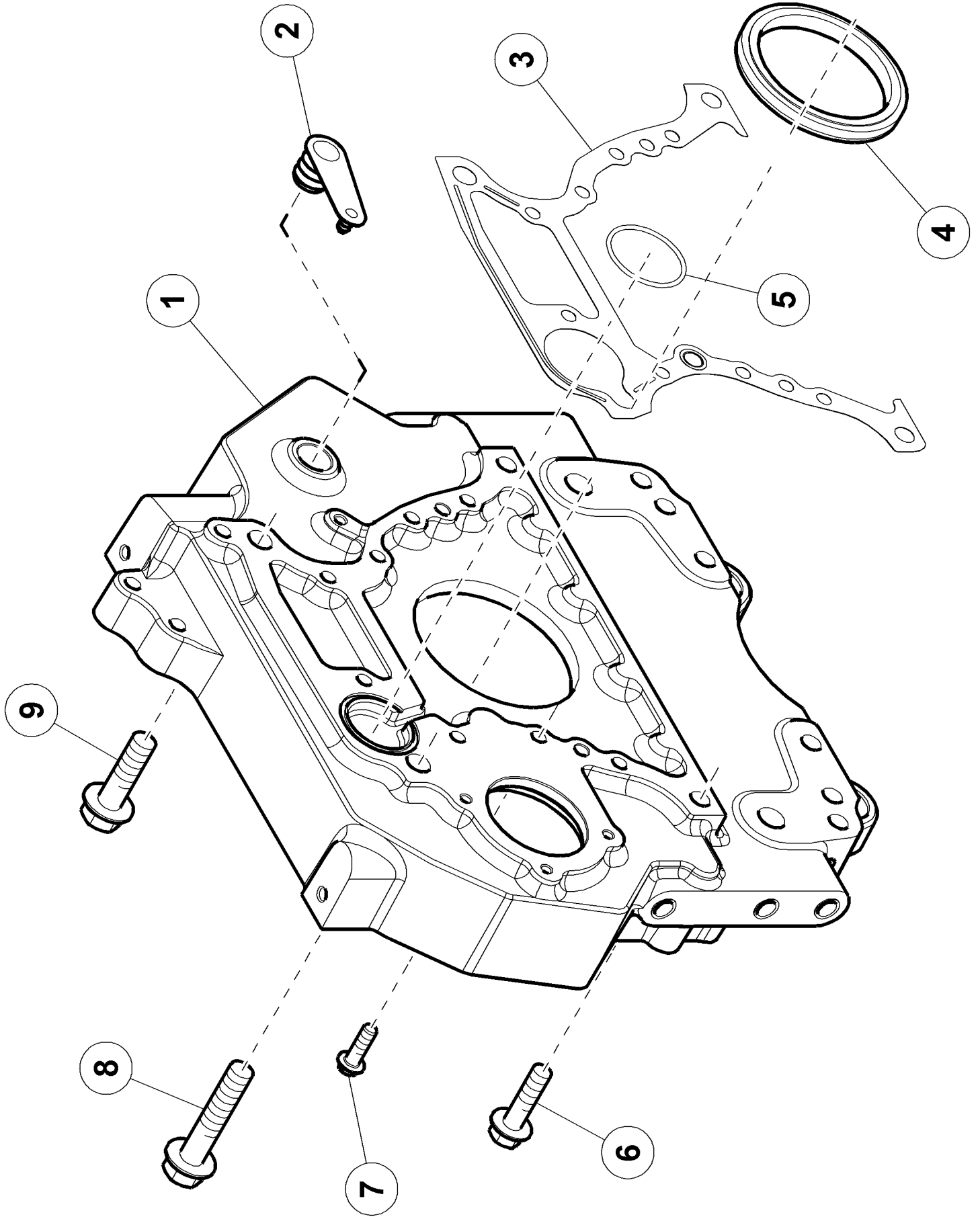
120 TIMING CASE

Pos.	Part No.	Description	Dimension	Quantity	Conditions
1	00 1162 415 0	CASING		1	
2	00 1162 416 0	FLAT SEAL		1	
3	60 0502 145 6	SCREW	M8X25	1	
4	00 1132 471 0	SUPPORT		4	
5	60 0502 716 2	SCREW	M10X45-LH	4	
6	60 0502 593 6	SCREW	M8X50	5	
7	60 0502 144 9	NUT		9	
8	60 0502 160 3	LOCK	M22X1,5	1	
9	60 0502 145 0	SCREW	M08X60	3	
10	60 0503 024 7	SEALING RING		1	
11	60 0500 796 4	O-RING	37,69 X 3,53 NBR 80	1	



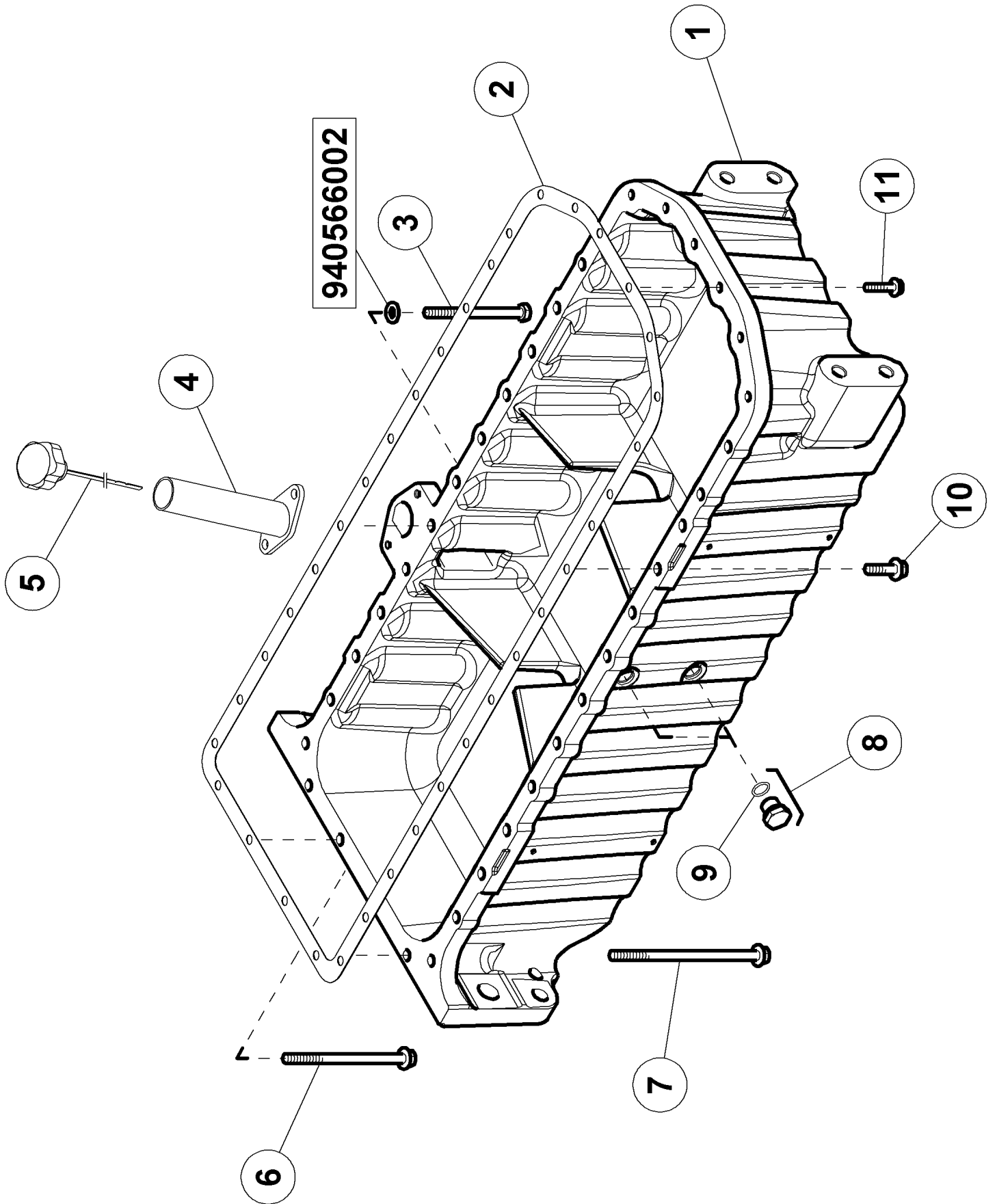
120 TIMING CASE

Pos.	Part No.	Description	Dimension	Quantity	Conditions
1	00 1132 472 0	PLATE		1	
2	00 1132 473 0	STUD BOLT		7	
3	60 0502 339 7	SCREW		5	
4	60 0502 339 8	STUD BOLT		2	



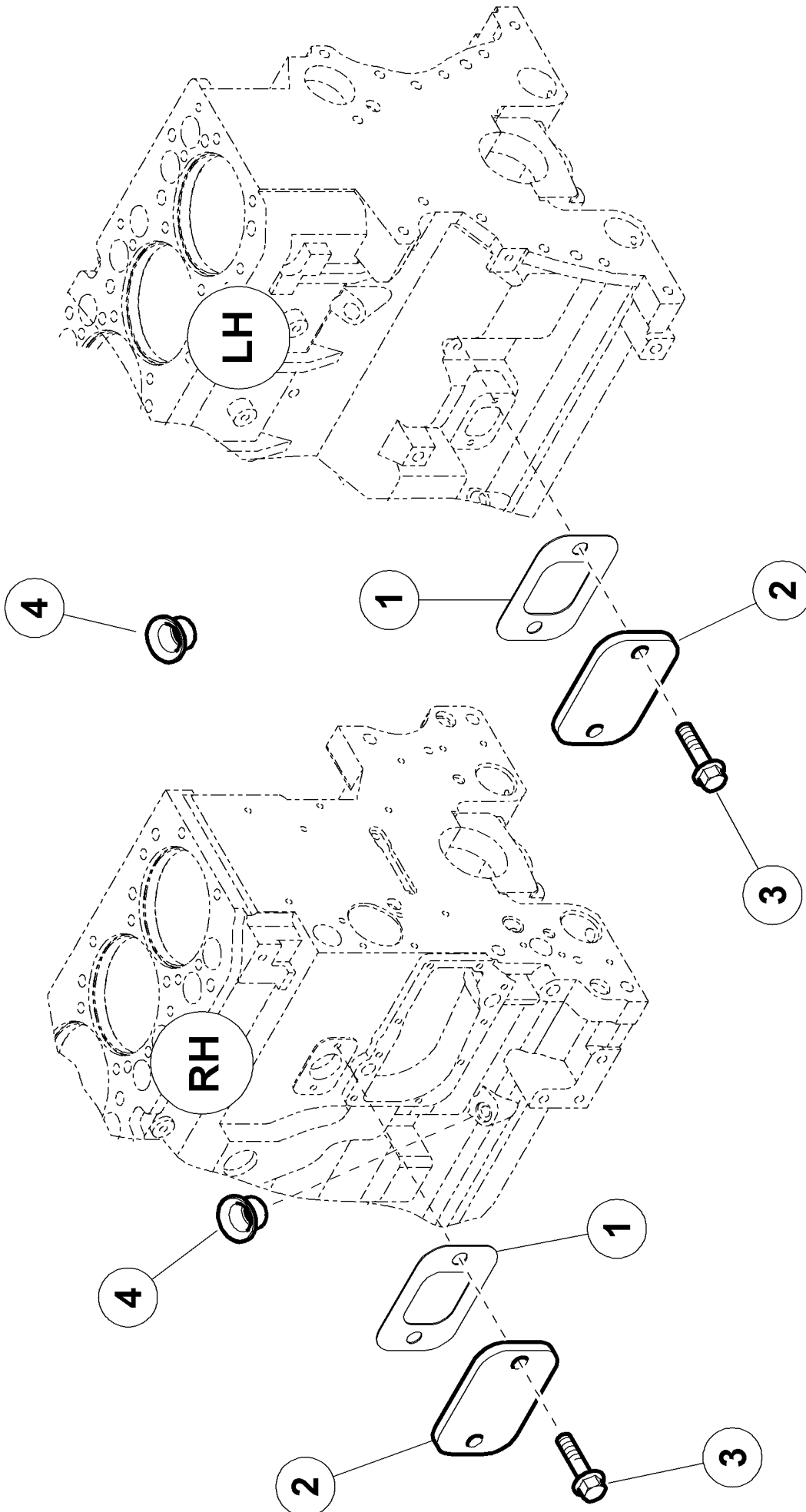
140 FLYWHEEL HOUSING

Pos.	Part No.	Description	Dimension	Quantity	Conditions
1	77 0007 440 4	CARTER VOLANT MOTEUR		1	
2	60 0501 611 6	BLANKING COVER		1	
3	77 0005 577 1	GASKET		1	
4	60 0501 279 0	SHAFT SEAL	118X146X15	1	
5	60 0501 604 9	O-RING		1	
6	60 0502 777 3	SCREW	M16X60	2	
7	60 0502 625 8	SCREW	12 X 1,75 -37 - M12X40	8	
8	00 1132 477 0	SCREW	M20X100	1	
9	00 1132 476 0	SCREW		1	



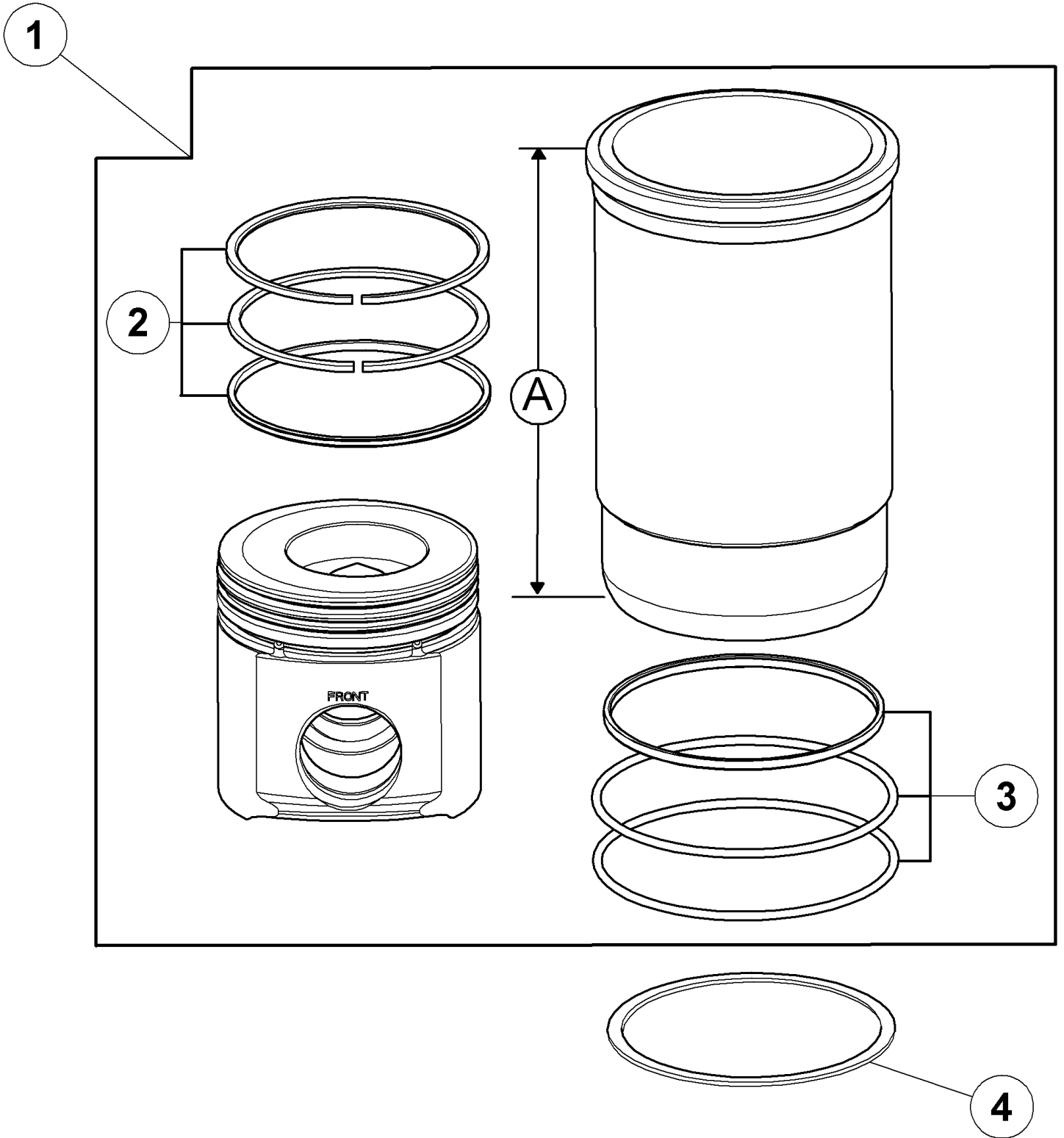
160 OIL PAN

Pos.	Part No.	Description	Dimension	Quantity	Conditions
1	00 1145 558 0	BOX		1	
2	60 0502 666 6	GASKET		1	
3	60 0502 147 1	SCREW		2	
4	60 0502 942 0	TUBE		1	
5	00 1131 807 0	GAUGE		1	
6	00 1132 474 0	SCREW		2	
7	00 1132 475 0	SCREW		2	
8	60 0502 160 7	PLUG	F-M18X1,5 ERS.D.7700054	2	
9	60 0502 160 8	O-RING	15,3X2,2-N	2	
10	60 0502 165 4	SCREW	M10X35	24	
11	60 0502 144 4	SCREW	M8X35	6	
94056 6002	77 0305 307 5	WASHER	10,4 X 20 X 2	2	



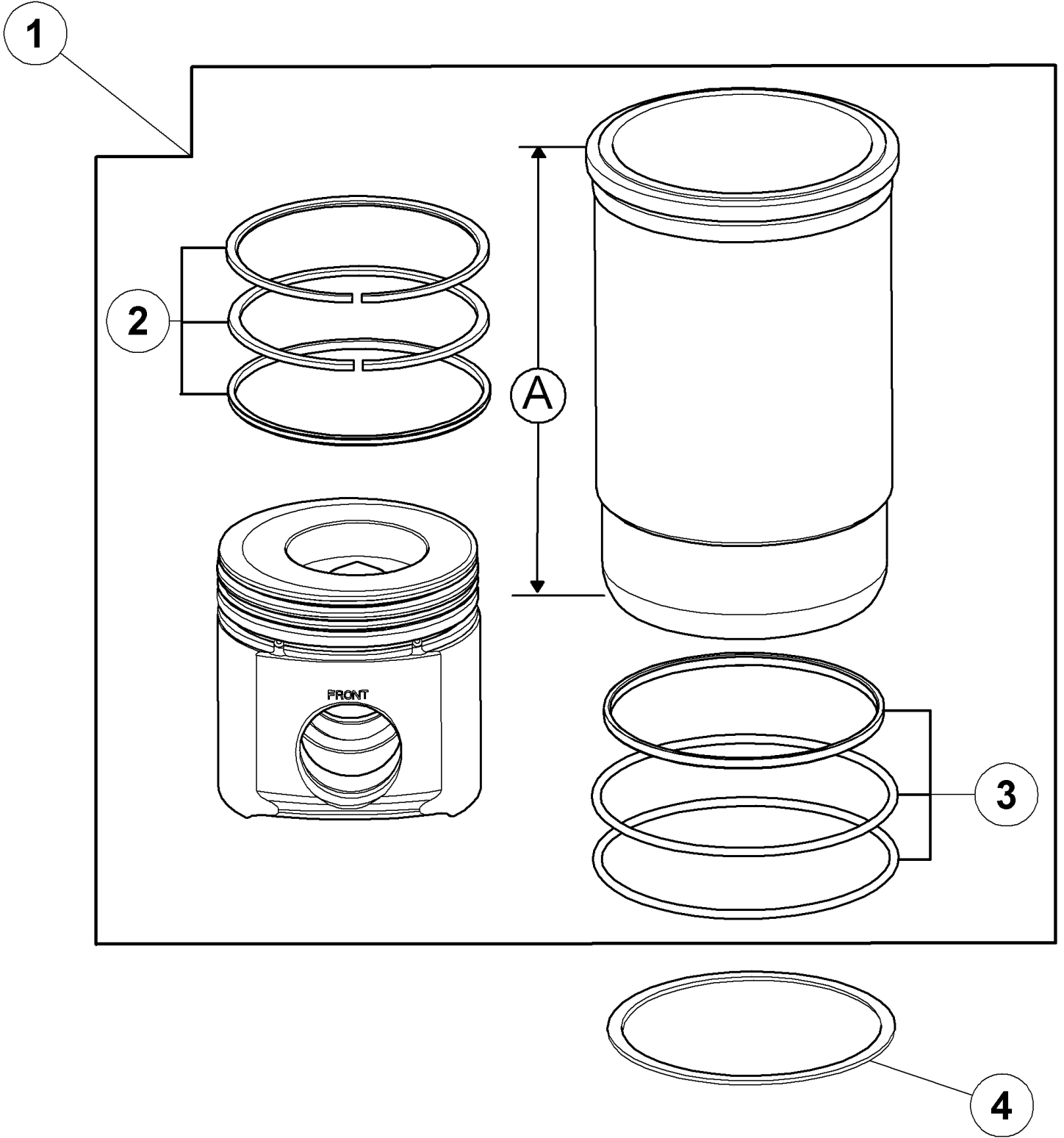
180 PLUGS

Pos.	Part No.	Description	Dimension	Quantity	Conditions
1	60 0502 470 4	GASKET		2	
2	60 0502 470 2	PLATE		2	
3	60 0502 149 8	SCREW	M8X20	4	
4	60 0502 662 4	PLUG		2	



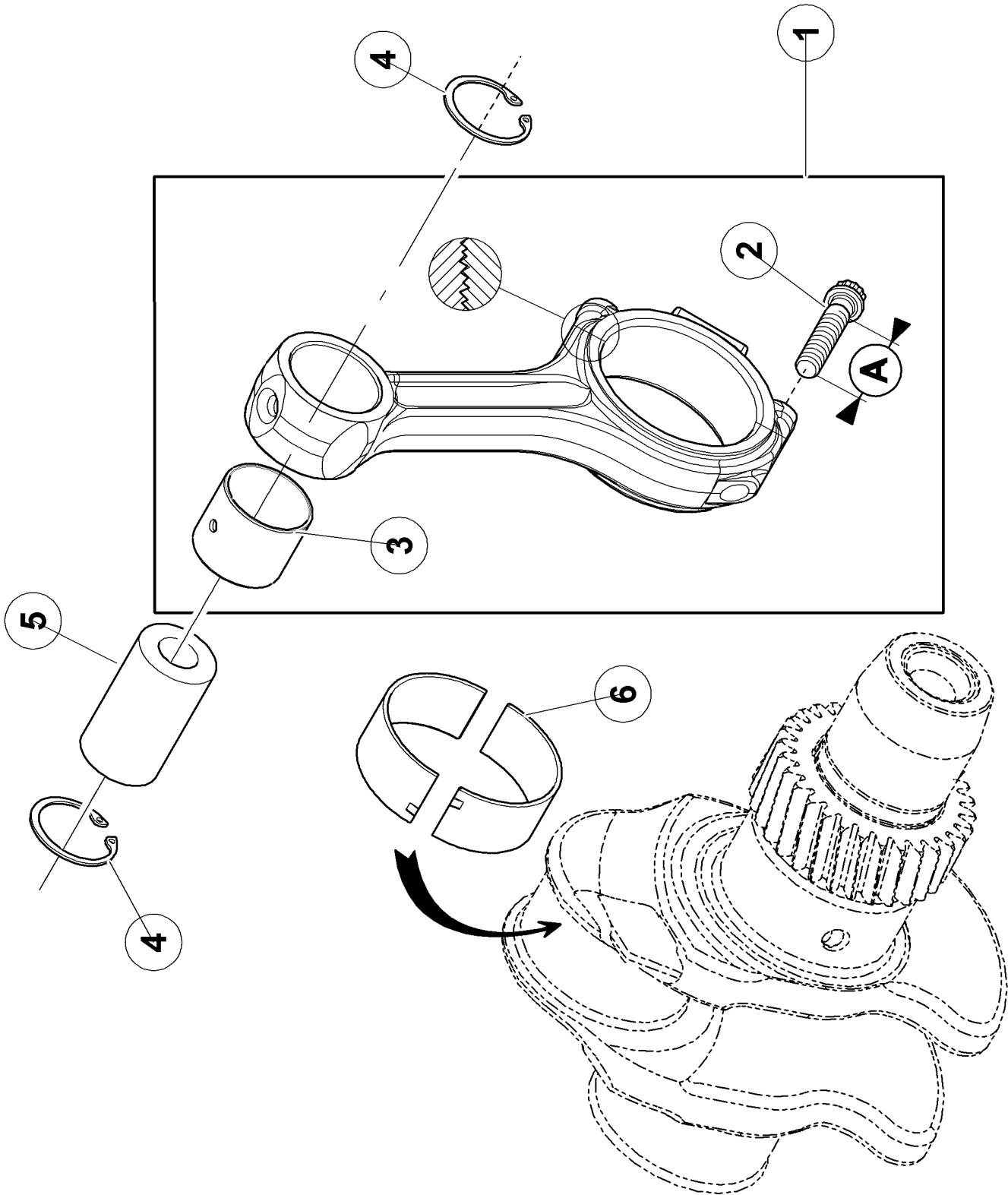
100 CYLINDER LINER, PISTON 1)

Pos.	Part No.	Description	Dimension	Quantity	Conditions
1	00 1132 478 0	PISTON-LINER		6	
2	00 1132 480 0	SET OF PISTON RINGS		6	
3	60 0501 280 9	SEALING RING SET		6	
4	60 0501 281 5	ADJUSTING DISC		6	2)
4	60 0501 281 6	ADJUSTING DISC		6	3)
1)	Homologationtype		+ 4702		
2)	Remarks		[SR] EP.0.05MM		
3)	Remarks		[SR] EP.0.10MM		



100 CYLINDER LINER, PISTON 1)

Pos.	Part No.	Description	Dimension	Quantity	Conditions
1	00 1132 479 0	CYLINDER/RAM		6	
2	00 1132 481 0	PISTON RING SET		6	
3	60 0501 280 9	SEALING RING SET		6	
4	60 0501 281 5	ADJUSTING DISC		6	2)
4	60 0501 281 6	ADJUSTING DISC		6	3)
1)	Homologationtype		- 4702		
2)	Remarks		[SR] EP.0.05MM		
3)	Remarks		[SR] EP.0.10MM		



120 CONNECTING ROD, CONNECTING ROD BEARINGS

Pos.	Part No.	Description	Dimension	Quantity	Conditions
1	60 0502 453 6	CONNECTING ROD		6	
2	60 0502 453 7	SCREW	12 PTS M12 X 1,25 - 61	12	
3	60 0502 147 6	RING		6	
4	60 0501 281 4	INNER CIRCLIP		12	
5	00 1132 482 0	AXLE		6	
6	60 0502 147 8	BEARING		6	
6	60 0502 147 9	BEARING		6	1)
1)	Remarks		-0.254MM		



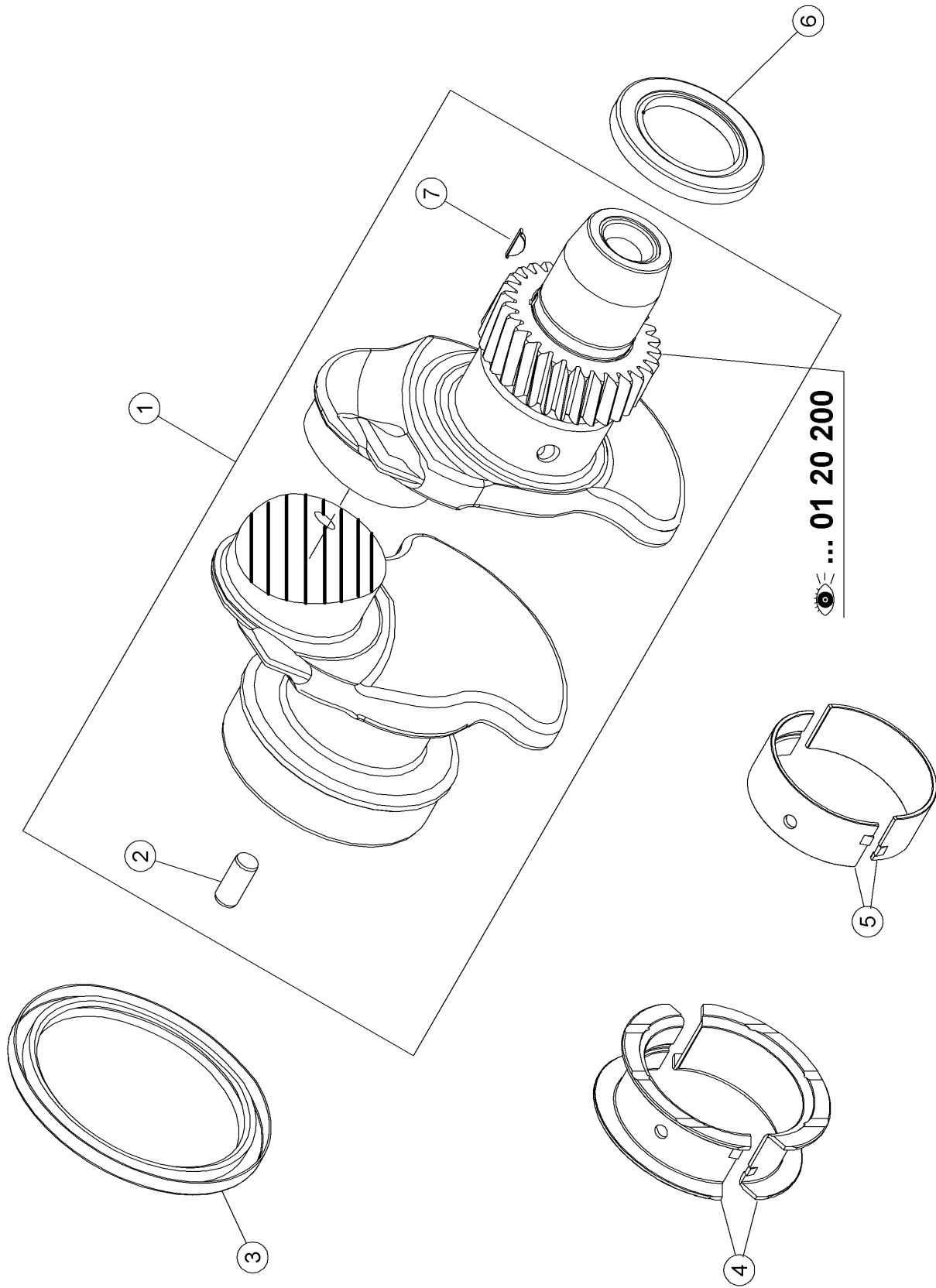
Suggest:

For more complete manuals. Please go to the home page.

<https://www.ebooklibonline.com>

If the above button click is invalid. Please download this document first, and then click the above link to download the complete manual.

Thank you so much for reading



140 CRANKSHAFT

Pos.	Part No.	Description	Dimension	Quantity	Conditions
1	60 0502 869 6	CRANKSHAFT		1	
2	60 0501 317 4	CENTRING PIN		1	
3	60 0501 279 0	SHAFT SEAL	118X146X15	1	
4	60 0502 148 1	BEARING		1	
4	60 0502 148 2	BEARING		1	1)
5	60 0502 148 3	BEARING		6	
5	60 0502 148 4	BEARING		6	1)
6	60 0503 024 7	SEALING RING		1	
7	60 0502 869 7	KEY		1	
1)	Remarks				-0.254MM

<https://www.ebooklibonline.com>

Hello dear friend!

Thank you very much for reading.

Enter the link into your browser.

The full manual is available for immediate download.

<https://www.ebooklibonline.com>