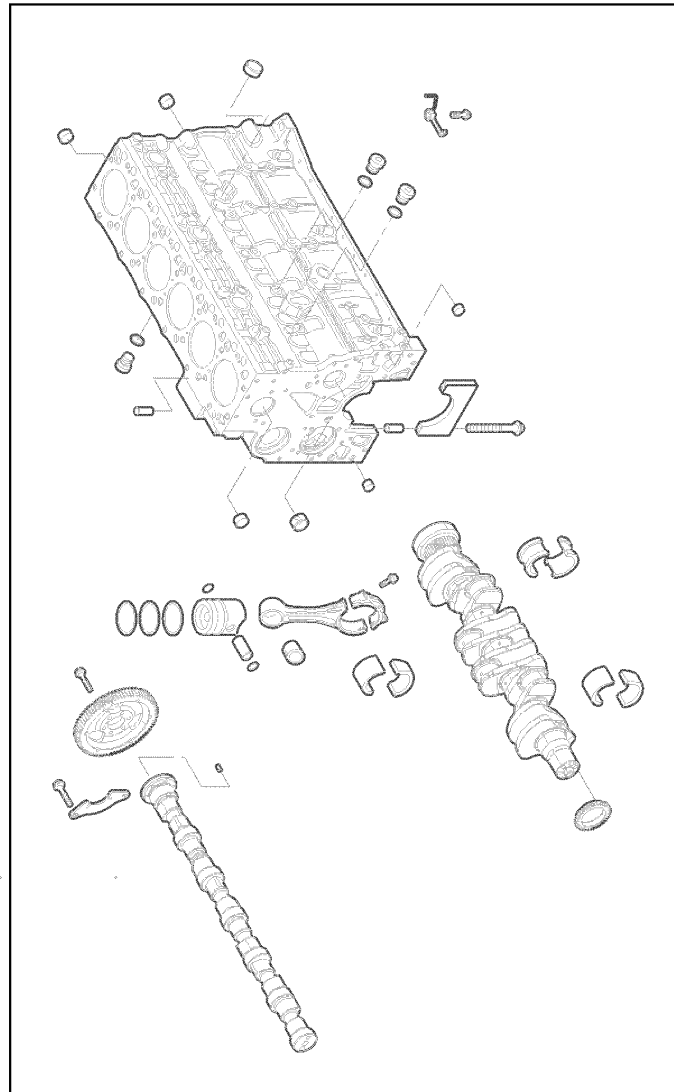


010 COMPLETE ENGINE

Pos.	Part No.	Description	Dimension	Quantity	Conditions
1	00 2159 834 4	ENGINE		1	1)
2	00 2159 836 4	ENGINE		1	2)
3	00 2159 838 4	ENGINE		1	3)
4	00 2159 840 4	ENGINE		1	4)
5	00 2199 027 0	ENGINE		1	5)
6	00 2199 033 0	ENGINE		1	6)
1)	Equipment	TJ_P02_0401	205 hp rated output, 215 hp max. output, ECE R 120		
2)	Equipment	TJ_P02_0402	225 hp rated output, 235 hp max. output, ECE R 120		
3)	Equipment	TJ_P02_0403	240 hp rated output, 250 hp max. output, ECE R 120		
4)	Equipment	TJ_P02_0404 TJ_P02_0424	250 hp rated output, 264 hp max. output, ECE R 120 250 hp rated output, 264 hp max. output, ECE R 120		
5)	Equipment	TJ_P02_0405	195 hp rated output, 205 hp max. output, ECE R 120		
6)	Equipment	TJ_P02_0406	215 hp rated output, 225 hp max. output, ECE R 120		



1

<https://www.ebooklibonline.com>

Hello dear friend!

Thank you very much for reading.

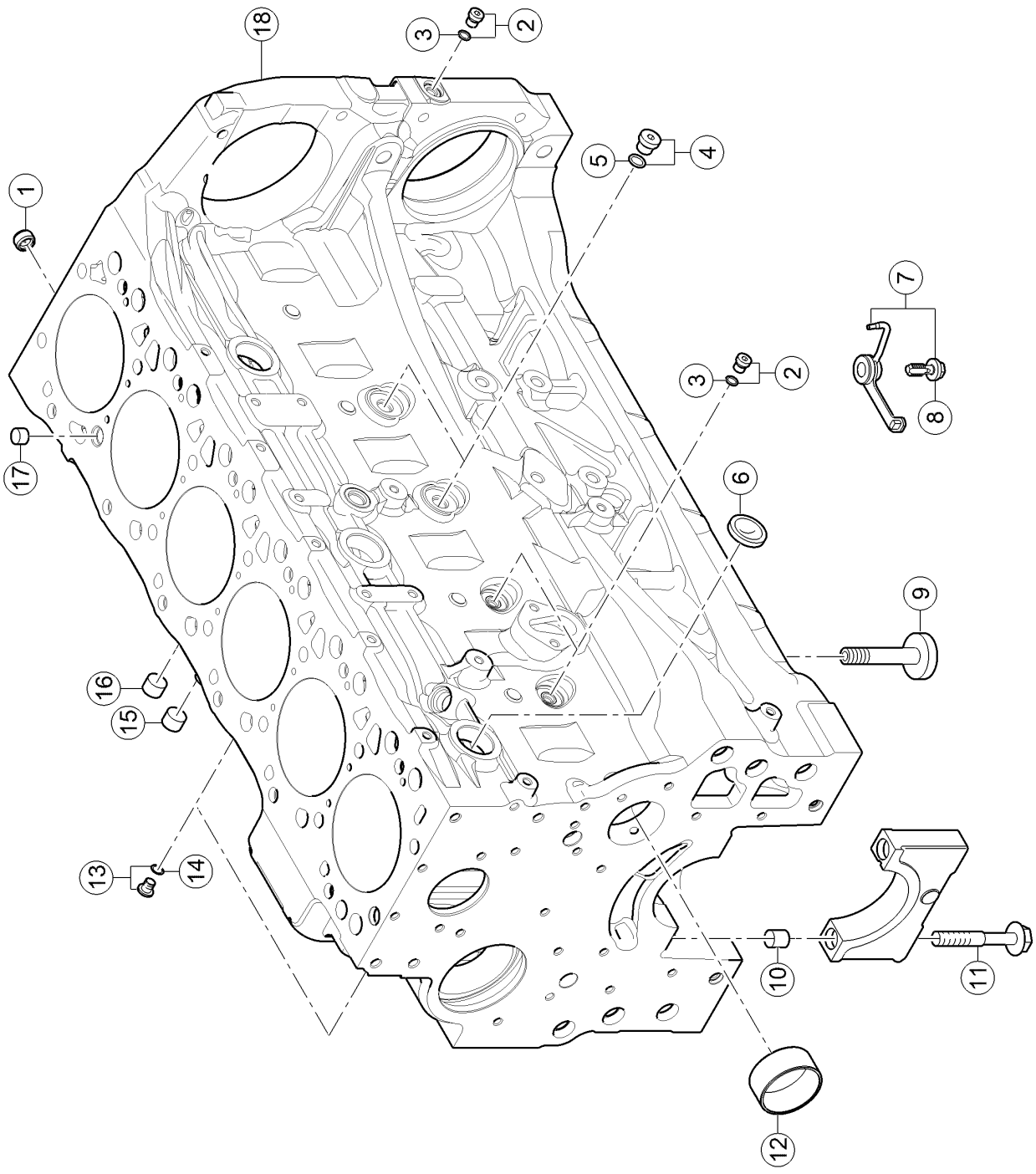
Enter the link into your browser.

The full manual is available for immediate download.

<https://www.ebooklibonline.com>

010 COMPLETE ENGINE

Pos.	Part No.	Description	Dimension	Quantity	Conditions
1	00 1149 432 0	SHORT BLOCK		1	



100 CRANKCASE

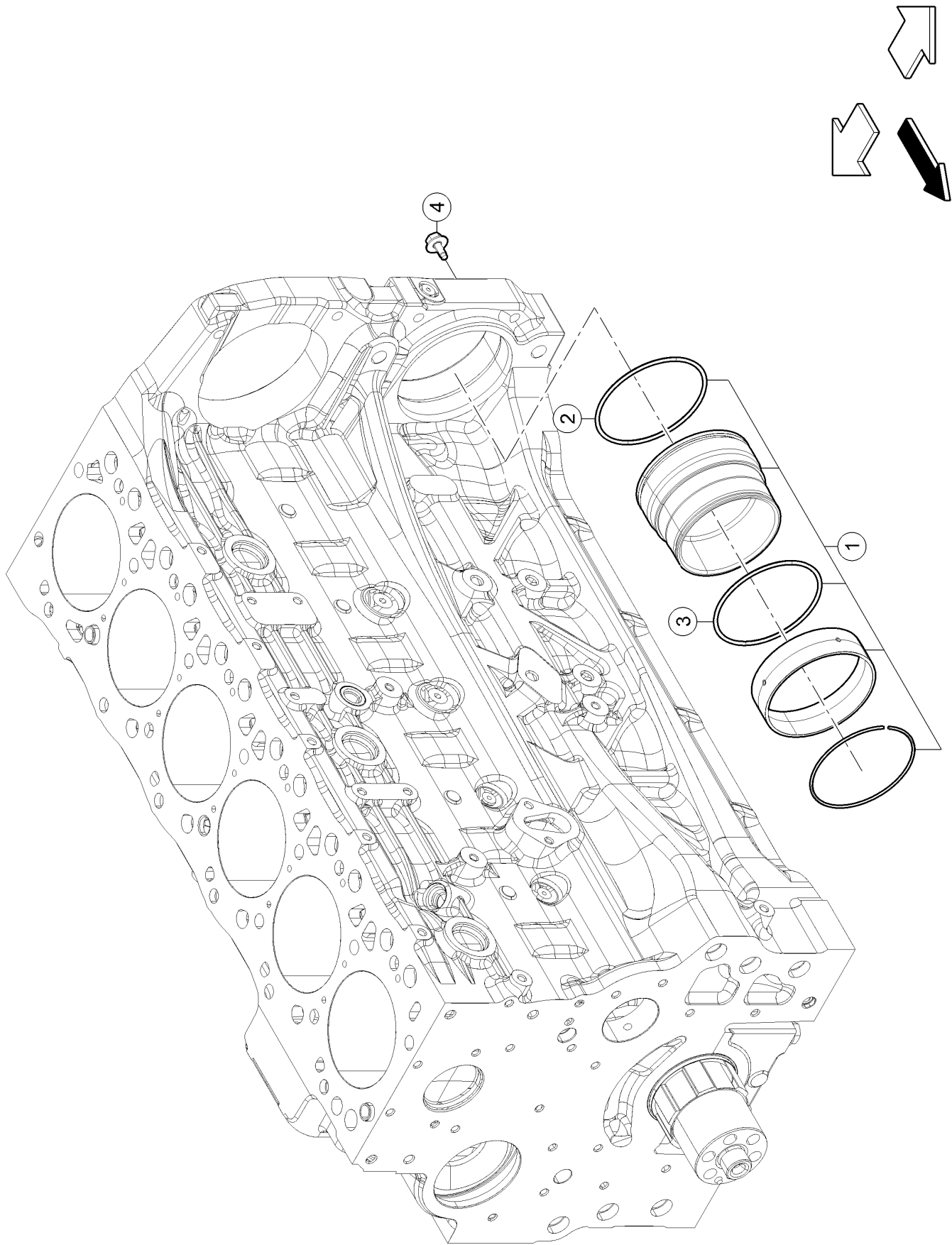
Pos.	Part No.	Description	Dimension	Quantity	Conditions
1	00 1139 588 0	NOZZLE		1	
2	60 0503 098 3	PLUG		3	
3	60 0503 098 4	O-RING		3	
4	60 0503 100 0	PLUG		2	
5	60 0503 100 1	O-RING		2	
6	60 0503 098 2	PLUG		3	
7	60 0503 099 8	NOZZLE		6	1)
7	00 1164 565 0	NOZZLE		6	2)
8	60 0503 099 7	SCREW		6	1)
9	00 1149 427 0	PUSHROD		12	
10	60 0503 098 6	CENTRING PIN		14	
11	60 0503 098 5	SCREW		14	
12	60 0503 098 1	BUSHING		1	
13	60 0503 099 3	PLUG		2	
14	60 0503 099 4	O-RING		2	
15	60 0503 099 0	PLUG		2	
16	60 0503 098 0	PLUG		6	
17	60 0503 098 7	CENTRING PIN		2	
18	00 1167 351 0	CRANKCASE		1	

1) machine no.

+ up to A4002610
 - A4002605
 - A4002608
 + A4002626
 + A4002627
 + A4002632
 + A4002641
 + A4002661
 Up to Engine N° 1444454

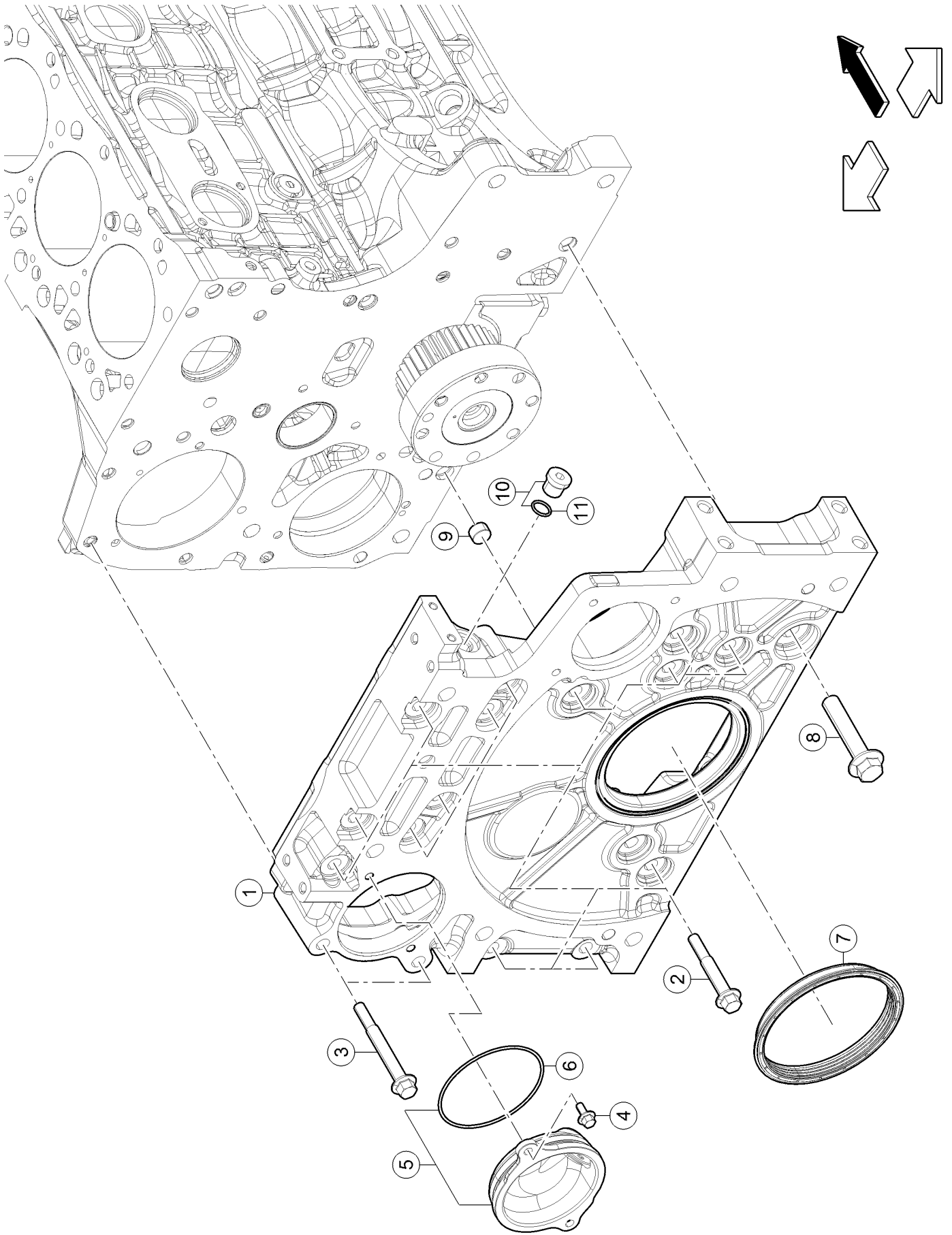
2) machine no.

+ A4002605
 + A4002608
 + from A4002611
 - A4002626
 - A4002627
 - A4002632
 - A4002641
 - A4002661
 From Engine N°1444455



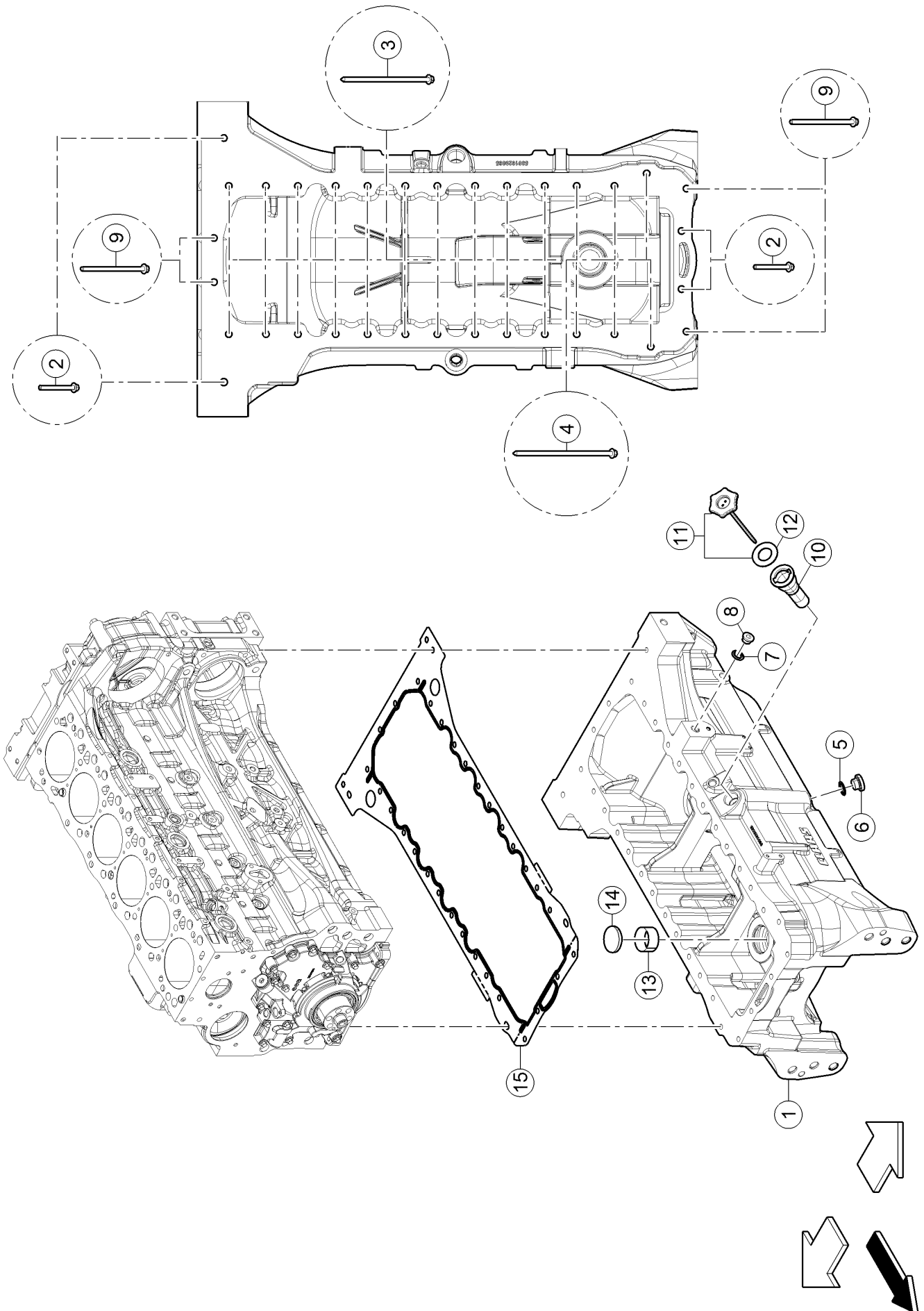
100 CRANKCASE

Pos.	Part No.	Description	Dimension	Quantity	Conditions
1	00 1153 600 0	SMOOTH RING		1	
2	60 0503 120 1	O-RING		1	
3	60 0503 120 2	O-RING		1	
4	00 1153 601 0	STD SCREW		1	



120 TIMING CASE

Pos.	Part No.	Description	Dimension	Quantity	Conditions
1	00 1149 460 0	CASING		1	
2	00 1139 458 0	SCREW		15	
3	00 1139 460 0	SCREW		2	
4	60 0503 112 2	SCREW		2	
5	00 1149 462 0	COVER		1	
6	00 1139 454 0	O-RING		1	
7	00 1147 783 0	SEALING RING		1	
8	00 1139 457 0	SCREW		1	
9	60 0503 100 8	CENTRING PIN		2	
10	60 0503 099 3	PLUG		1	
11	60 0503 099 4	O-RING		1	



160 OIL PAN

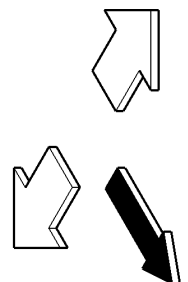
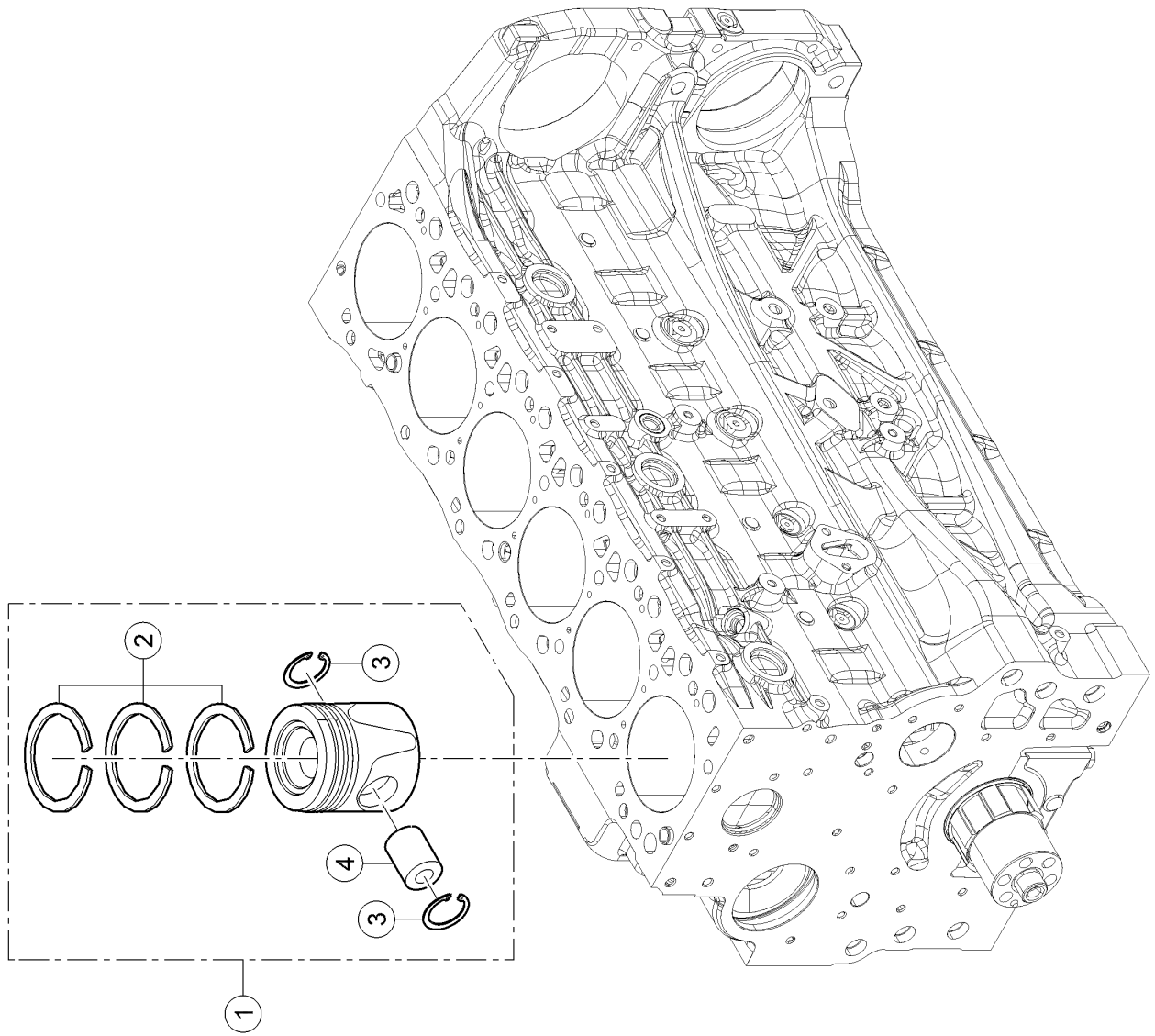
Pos.	Part No.	Description	Dimension	Quantity	Conditions
1	00 1149 495 0	CASING		1	1)
1	00 1153 444 0	CASING		1	2)
2	00 1149 496 0	SCREW		4	1)
2	00 1152 885 0	SCREW		4	2)
3	00 1149 497 0	SCREW		20	1)
3	00 1153 445 0	STD SCREW		20	2)
4	00 1149 498 0	SCREW		6	1)
4	00 1153 446 0	STD SCREW		6	2)
5	60 0503 101 1	O-RING		3	
6	60 0503 101 0	SCREW PLUG		3	
7	60 0503 132 7	GASKET		3	
8	60 0502 555 9	LOCK		1	
9	00 1149 499 0	SCREW		4	
10	00 1139 567 0	TUBE		1	3)
10	00 1152 621 0	TUBE		1	4)
11	00 1149 500 0	GAUGE		1	3)
11	00 1152 620 0	GAUGE		1	4)
12	60 0503 146 2	SEALING RING		1	
13	60 0503 101 4	ENGINE OIL FILTER		1	
14	60 0503 101 5	LOCK		1	
15	00 1149 501 0	FLAT SEAL		1	

1) machine no. + up to A4001197
 - A4001186
 - A4001189
 - A4001190
 - A4001191
 - A4001193
 - A4001195
 - A4001196
 + A4001203
 + A4001204

2) machine no. + A4001186
 + A4001189
 + A4001190
 + A4001191
 + A4001193
 + A4001195
 + A4001196
 + from A4001198
 - A4001203
 - A4001204

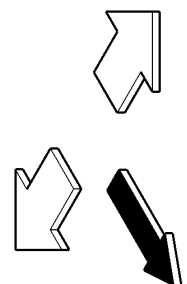
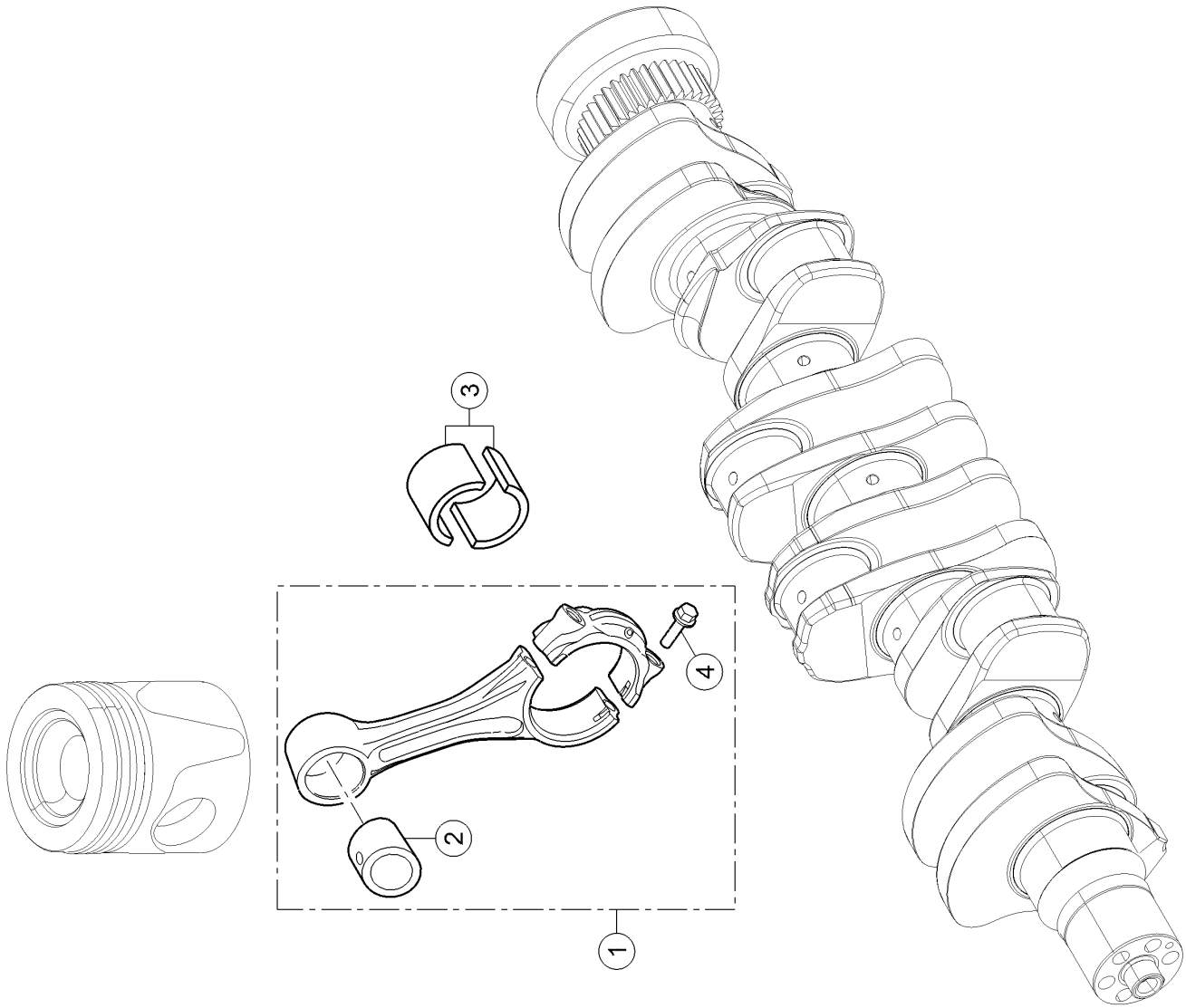
3) Remarks JQ/A A4000050

4) Remarks AP/A A4000051



100 CYLINDER LINER, PISTON

Pos.	Part No.	Description	Dimension	Quantity	Conditions
1	00 1149 530 0	PLUNGER		6	
2	00 1158 828 0	ENGINE PISTON RING		6	
3	00 1149 532 0	INT RETAINING RING		12	
4	00 1149 533 0	AXLE		6	



120 CONNECTING ROD, CONNECTING ROD BEARINGS

Pos.	Part No.	Description	Dimension	Quantity	Conditions
1	00 1149 550 0	ROD (ENGINE)		6	1)
1	00 1166 560 0	ROD (ENGINE)		6	2)
2	00 1149 551 0	RING		6	
3	00 1152 896 0	SET OF BEARING BUSHES		6	3)
3	00 1150 903 0	SET OF BEARING BUSHES		6	4)
3	00 1150 904 0	SET OF BEARING BUSHES		6	5)
4	60 0503 108 9	SCREW		12	

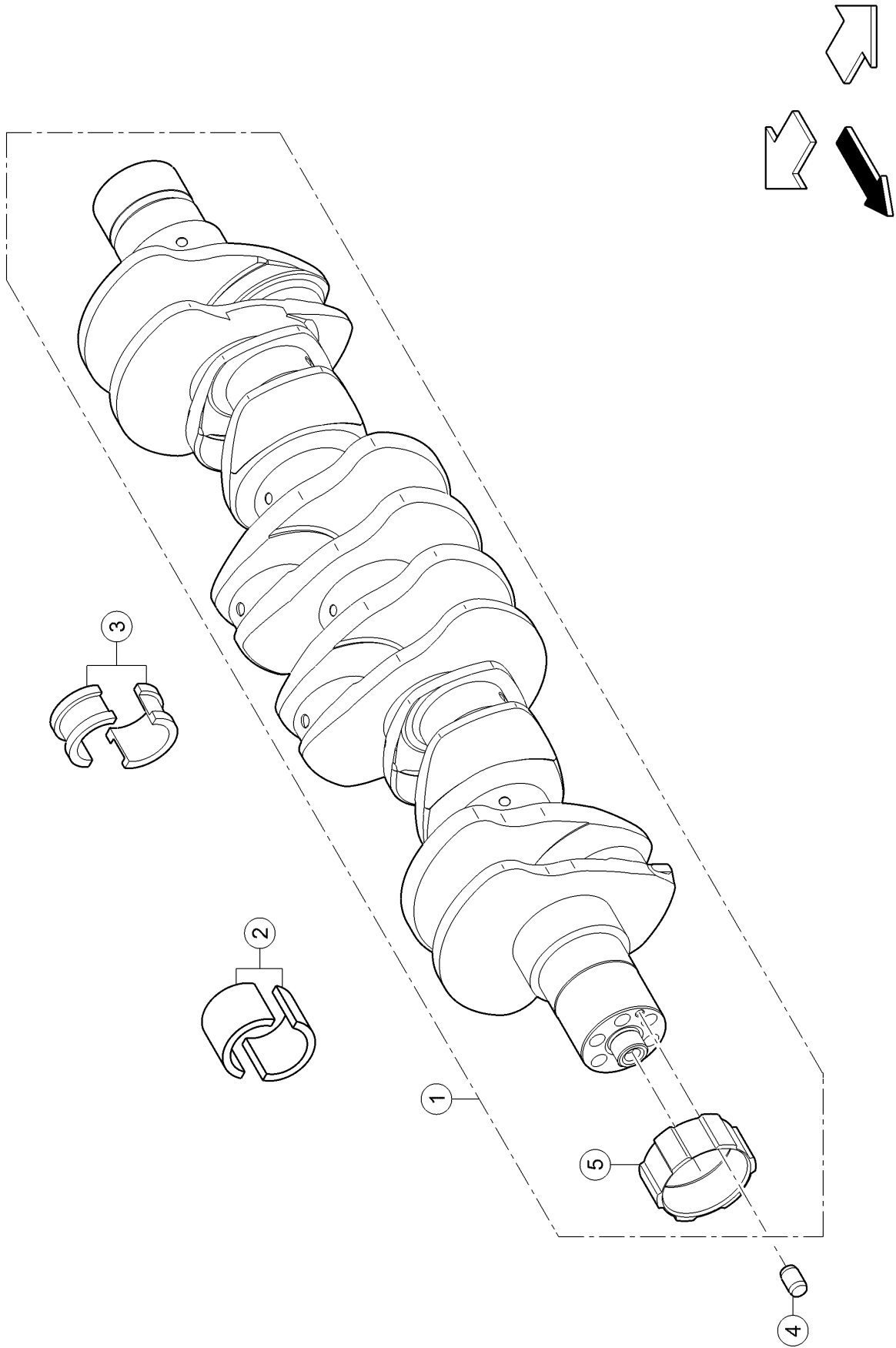
1) machine no. + up to A4003044
 - A4002997
 - A4003009
 - A4003010
 - A4003011
 - A4003012
 - A4003015
 - A4003016
 - A4003017
 - A4003020

2) machine no. + A4002997
 + A4003009
 + A4003010
 + A4003011
 + A4003012
 + A4003015
 + A4003016
 + A4003017
 + A4003020
 + A4003021

3) Remarks STANDARD

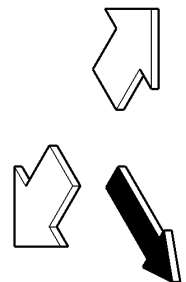
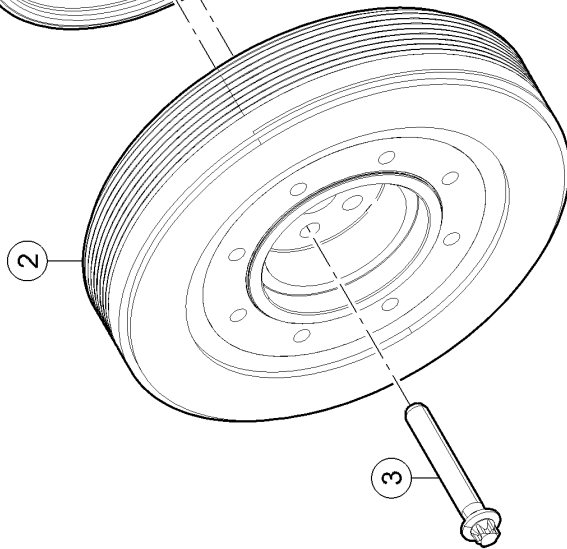
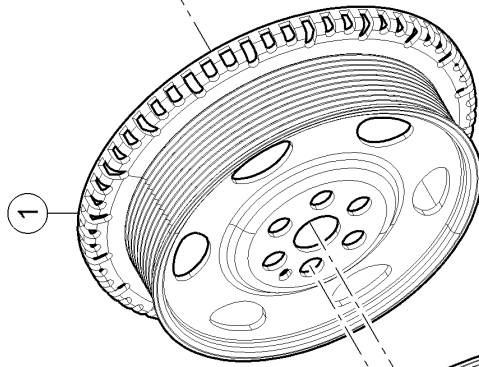
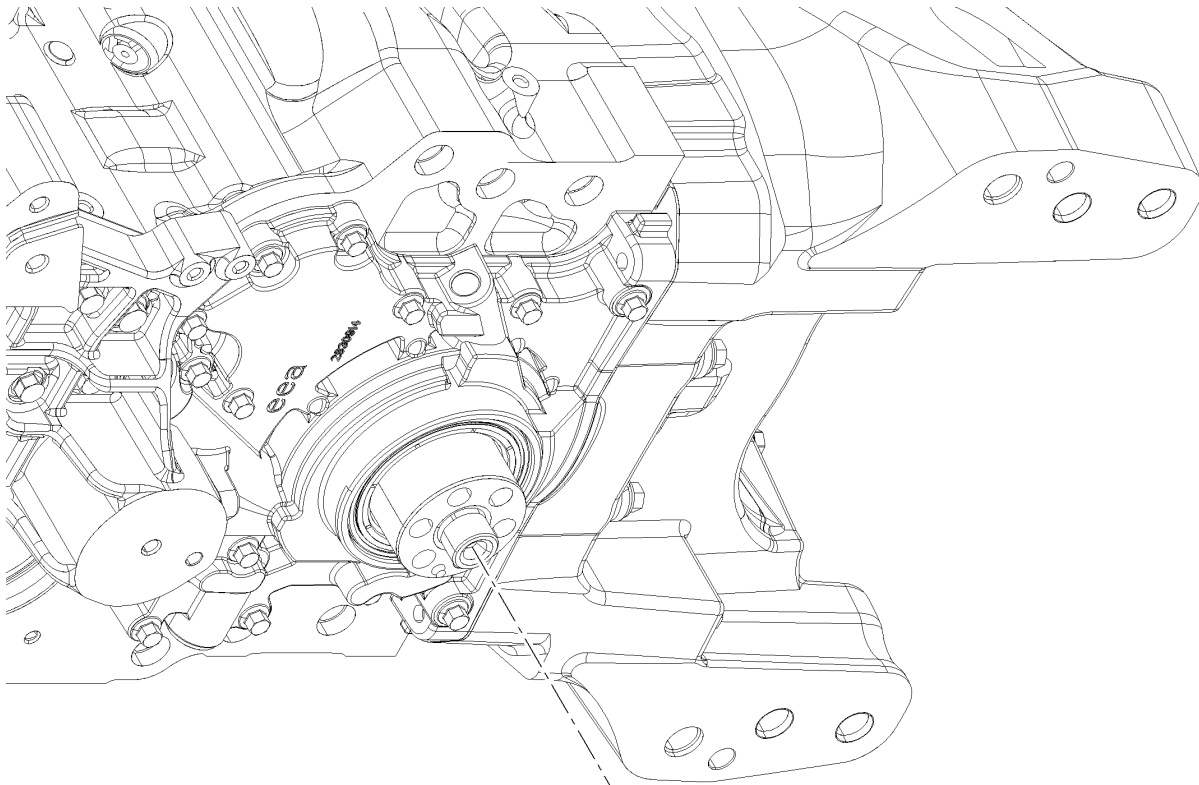
4) Remarks -0,250

5) Remarks -0,500



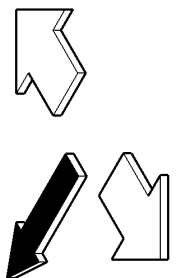
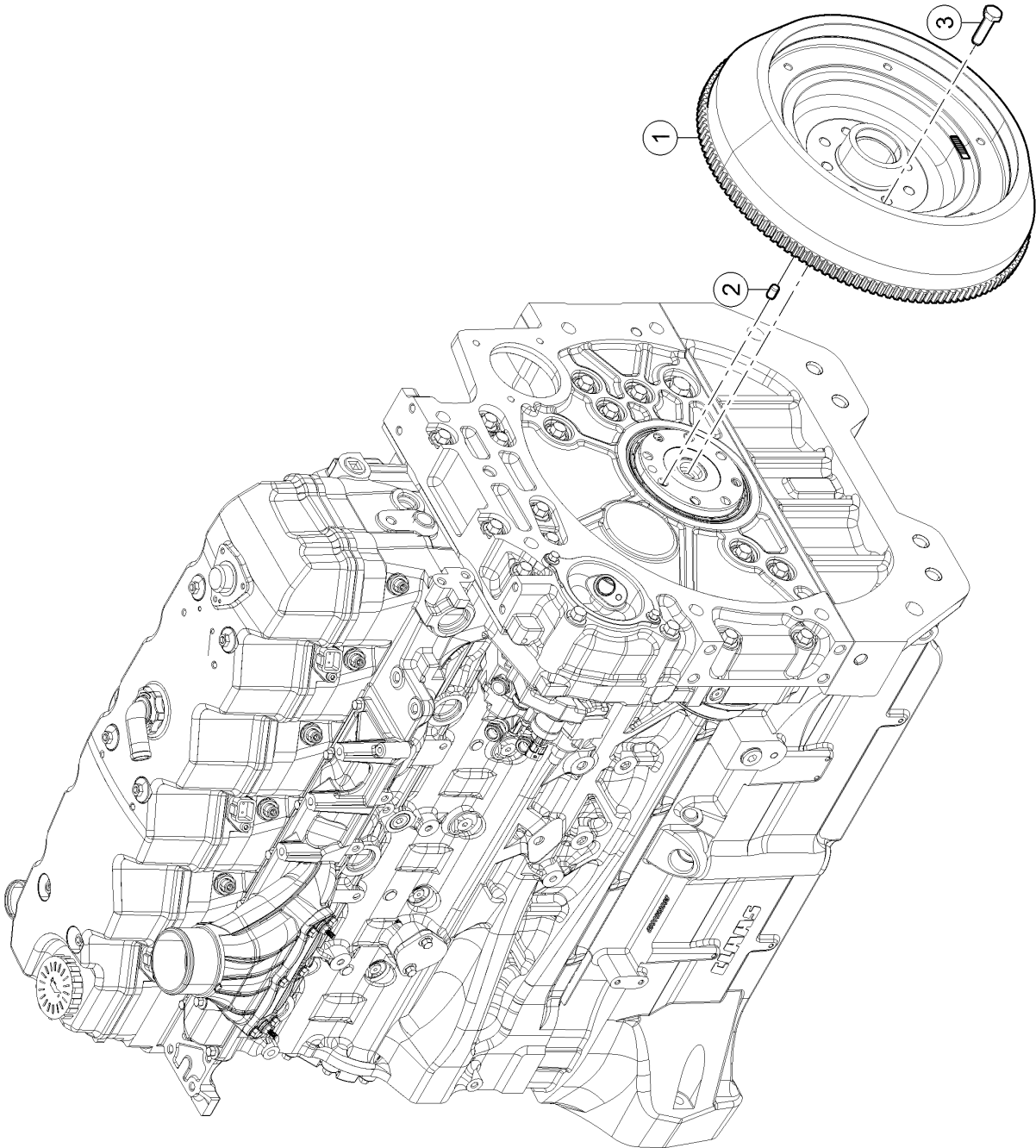
140 CRANKSHAFT

Pos.	Part No.	Description	Dimension	Quantity	Conditions
1	00 1149 561 0	CRANKSHAFT		1	
2	00 1149 562 0	SET OF BEARING BUSHES		6	1)
2	00 1150 898 0	SET OF BEARING BUSHES		6	2)
2	00 1150 900 0	SET OF BEARING BUSHES		6	3)
3	00 1149 563 0	SET OF BEARING BUSHES		1	1)
3	00 1150 901 0	SET OF BEARING BUSHES		1	2)
3	00 1150 902 0	SET OF BEARING BUSHES		1	3)
4	60 0503 110 4	CENTRING PIN		1	
5	00 1139 671 0	BUSHING		1	
1)	Remarks		STANDARD		
2)	Remarks		-0,250		
3)	Remarks		-0,500		



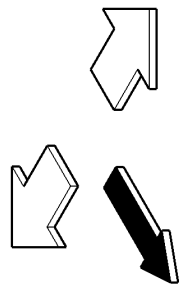
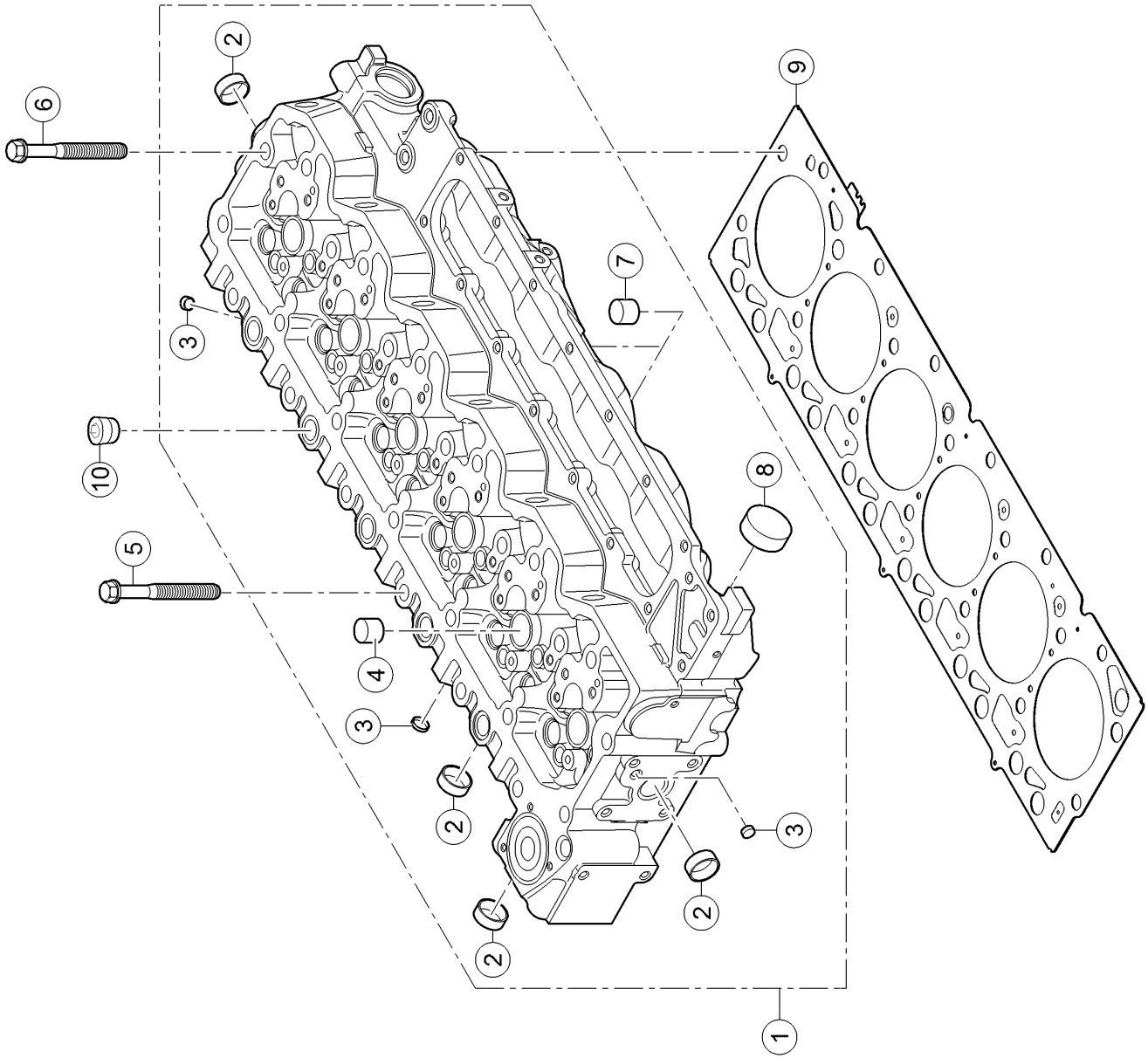
160 CRANKSHAFT PULLEY WHEEL

Pos.	Part No.	Description	Dimension	Quantity	Conditions
1	00 1149 566 0	PULLEY		1	
2	00 1149 567 0	HUB		1	
3	60 0503 104 3	SCREW		6	



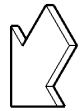
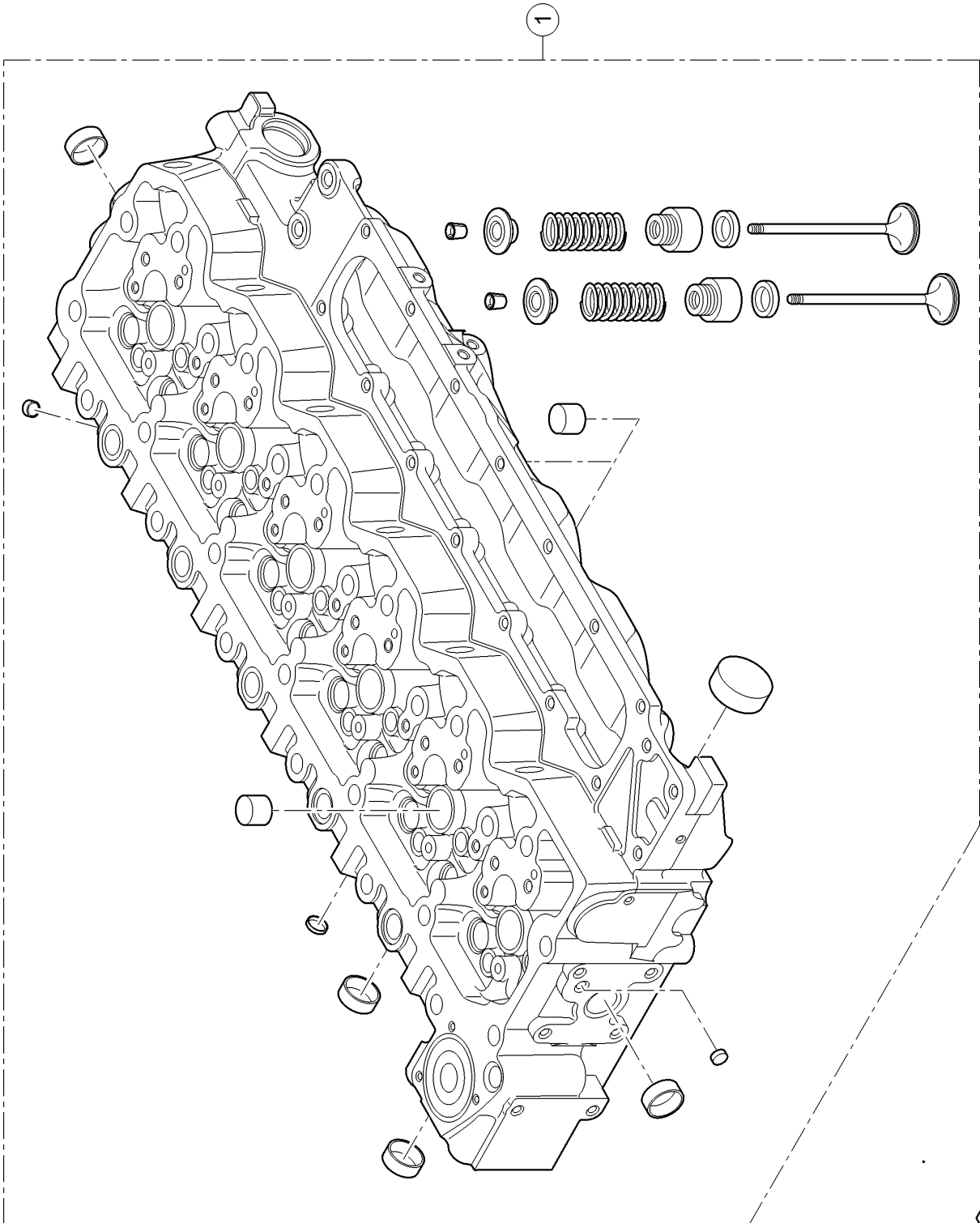
220 FLYWHEEL

Pos.	Part No.	Description	Dimension	Quantity	Conditions
1	00 1149 568 0	FLYWHEEL		1	
2	60 0503 111 0	CENTRING PIN		1	
3	00 1149 569 0	SCREW		8	



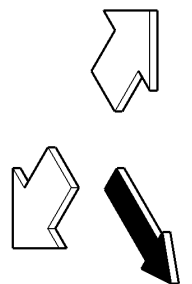
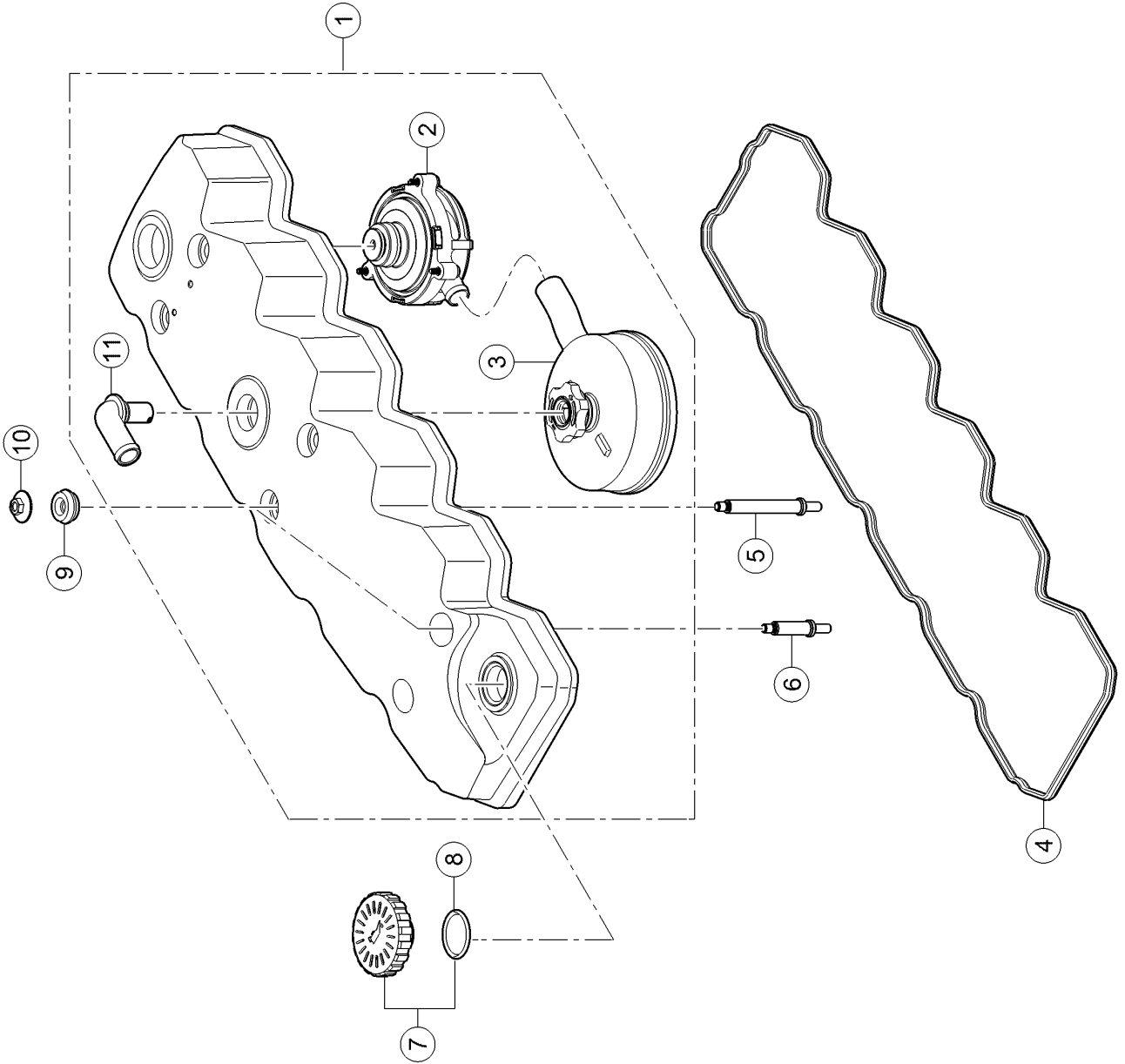
100 CYLINDER HEAD

Pos.	Part No.	Description	Dimension	Quantity	Conditions
1	00 1149 571 0	CYLINDER HEAD		1	
2	00 1139 905 0	PLUG		13	
3	00 1149 572 0	PLUG		7	
4	60 0503 099 1	PLUG		11	
5	00 1149 573 0	SCREW		12	
6	00 1149 574 0	SCREW		14	
7	00 1149 575 0	PLUG		1	
8	00 1149 576 0	PLUG		2	
9	00 1149 577 0	CYLINDER HEAD GASKET		1	1)
9	00 1160 918 0	CYLINDER HEAD GASKET		1	2)
10	60 0503 113 1	PLUG		4	
1)	Remarks		ép.1,25mm		
2)	Remarks		ép.1,15mm		



100 CYLINDER HEAD

Pos.	Part No.	Description	Dimension	Quantity	Conditions
1	00 1150 658 1	CYLINDER HEAD		1	



120 CYLINDER HEAD COVER

Pos.	Part No.	Description	Dimension	Quantity	Conditions
1	00 1155 861 0	ROCKER COVER		1	1)
1	00 1164 148 0	ROCKER COVER		1	2)
2	00 1149 659 0	HYDRAULIC VALVE		1	1)
2	00 1164 149 0	HYDRAULIC VALVE		1	2)
3	00 1149 660 0	OIL VAPOUR FILTER		1	1)
3	00 1164 150 0	OIL VAPOUR FILTER		1	2)
4	00 1149 661 0	SEAL		1	
5	00 1149 662 0	STUD BOLT		4	
6	00 1149 663 0	STUD BOLT		2	
7	00 1149 664 0	PLUG		1	
8	00 1149 665 0	O-RING		1	
9	00 1149 666 0	SEALING RING		6	
10	00 1149 667 0	PLUG		6	
11	00 1149 668 0	TUBE		1	

1) machine no. + up to A4002677
+ A4002679
+ A4002680
+ A4002681
+ A4002682
+ A4002683
+ A4002686
+ A4002687
+ A4002688
+ A4002690

2) machine no. + from A4002678
- A4002679
- A4002680
- A4002681
- A4002682
- A4002683
- A4002686
- A4002687
- A4002688
- A4002690



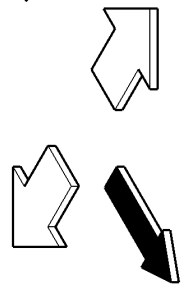
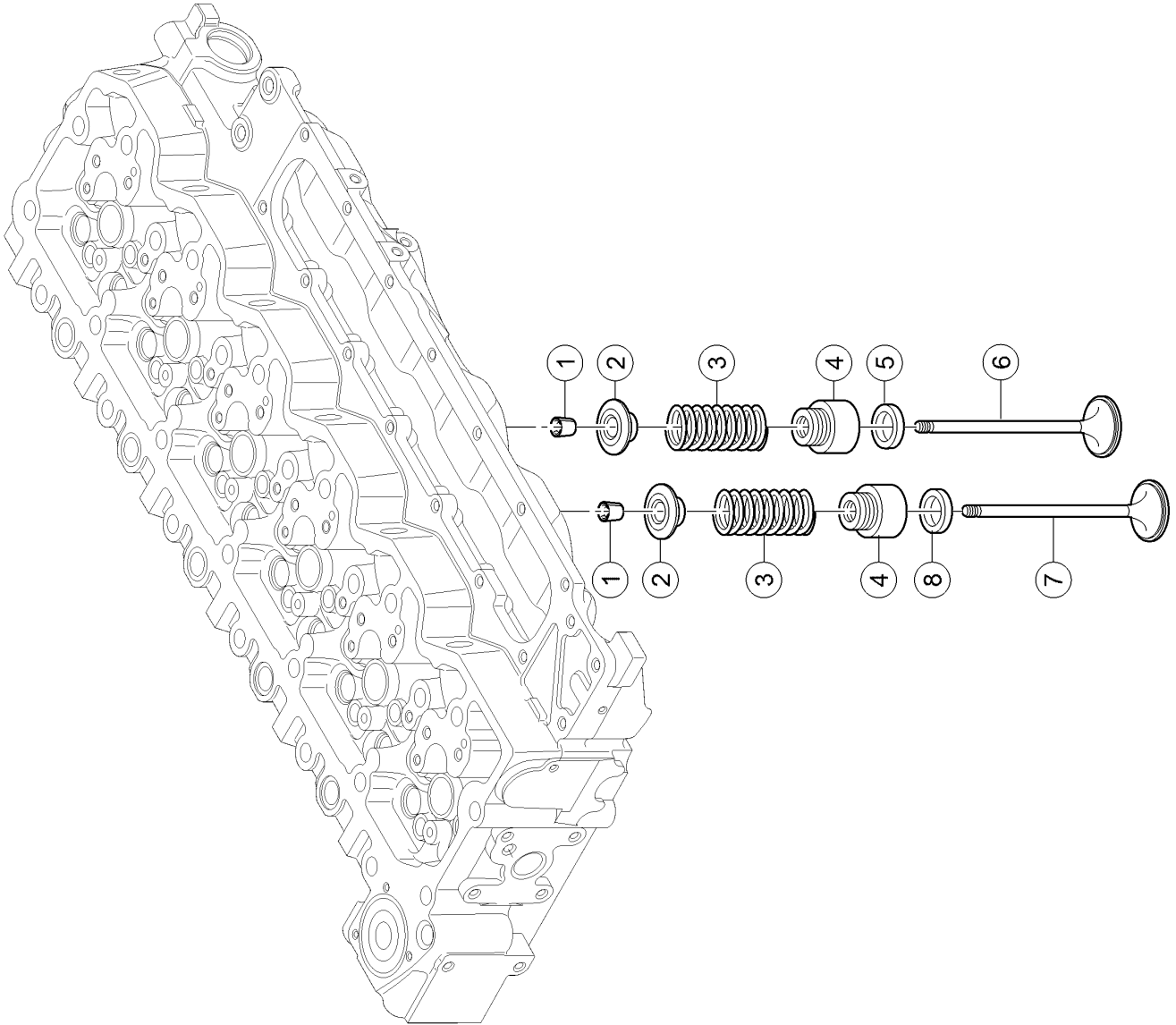
Suggest:

For more complete manuals. Please go to the home page.

<https://www.ebooklibonline.com>

If the above button click is invalid. Please download this document first, and then click the above link to download the complete manual.

Thank you so much for reading



140 VALVES

Pos.	Part No.	Description	Dimension	Quantity	Conditions
1	00 1149 679 0	HALF-CONE		48	
2	00 1149 680 0	WASHER		24	
3	00 1149 681 0	SPRING		24	
4	00 1149 683 0	GUIDE		24	
5	00 1149 684 0	VALVE SEAT		12	1)
6	00 1149 685 0	VALVE		12	1)
7	00 1149 686 0	VALVE		12	2)
8	00 1149 687 0	VALVE SEAT		12	2)
1)	Remarks		INTAKE		
2)	Remarks		EXHAUST		

<https://www.ebooklibonline.com>

Hello dear friend!

Thank you very much for reading.

Enter the link into your browser.

The full manual is available for immediate download.

<https://www.ebooklibonline.com>