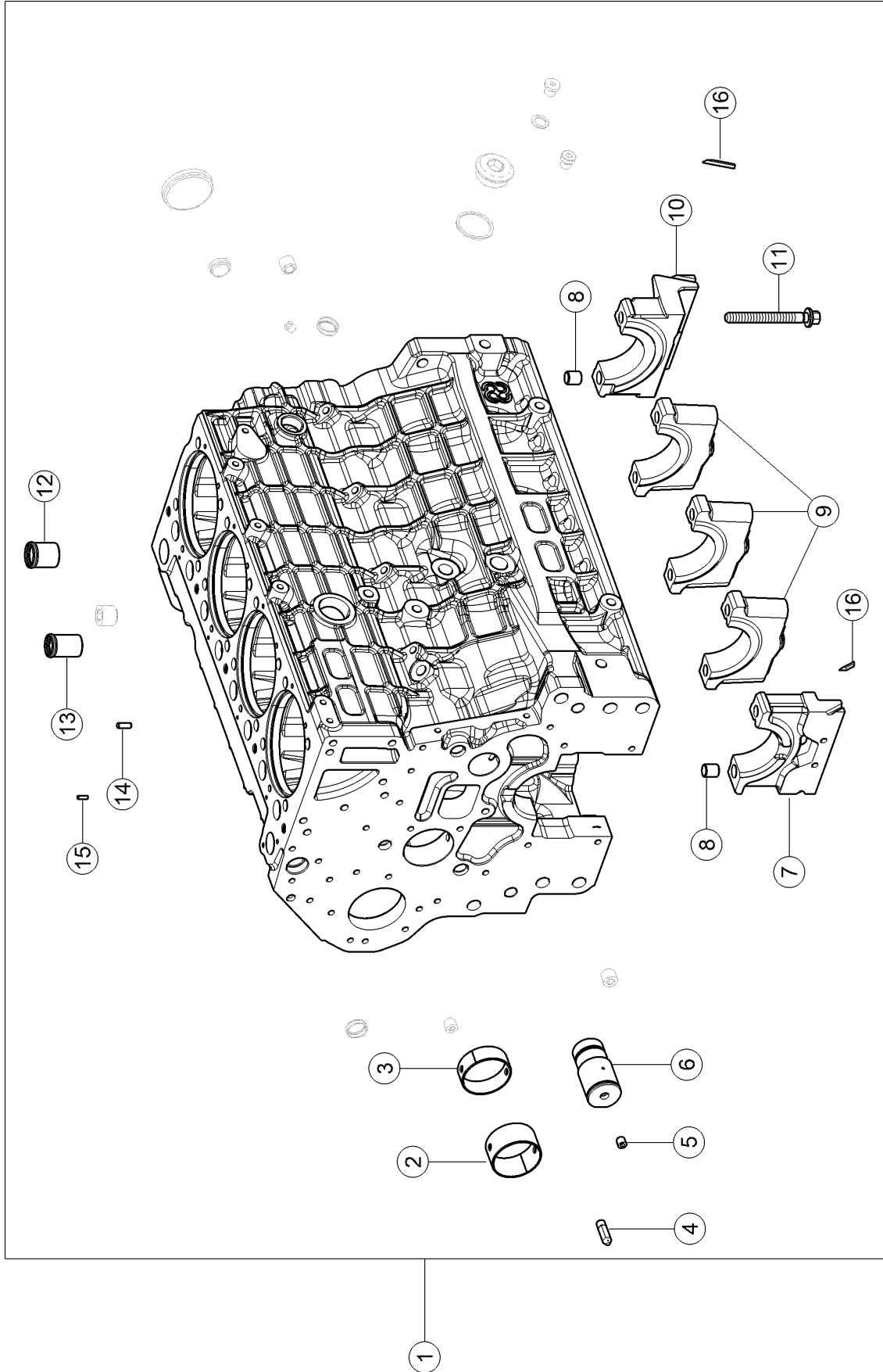


010 COMPLETE ENGINE

Pos.	Part No.	Description	Dimension	Quantity	Conditions
1	00 1170 698 0	ENGINE		1	1)
1	00 1170 699 0	ENGINE		1	2)
1	00 1170 700 0	ENGINE		1	3)
1)	Type/Subtype	A99/300			+ ATOS 330 Stage IIIb T2
2)	Type/Subtype	A99/400			+ ATOS 340 Stage IIIb T2
3)	Type/Subtype	A99/500			+ ATOS 350 Stage IIIb T2



<https://www.ebooklibonline.com>

Hello dear friend!

Thank you very much for reading.

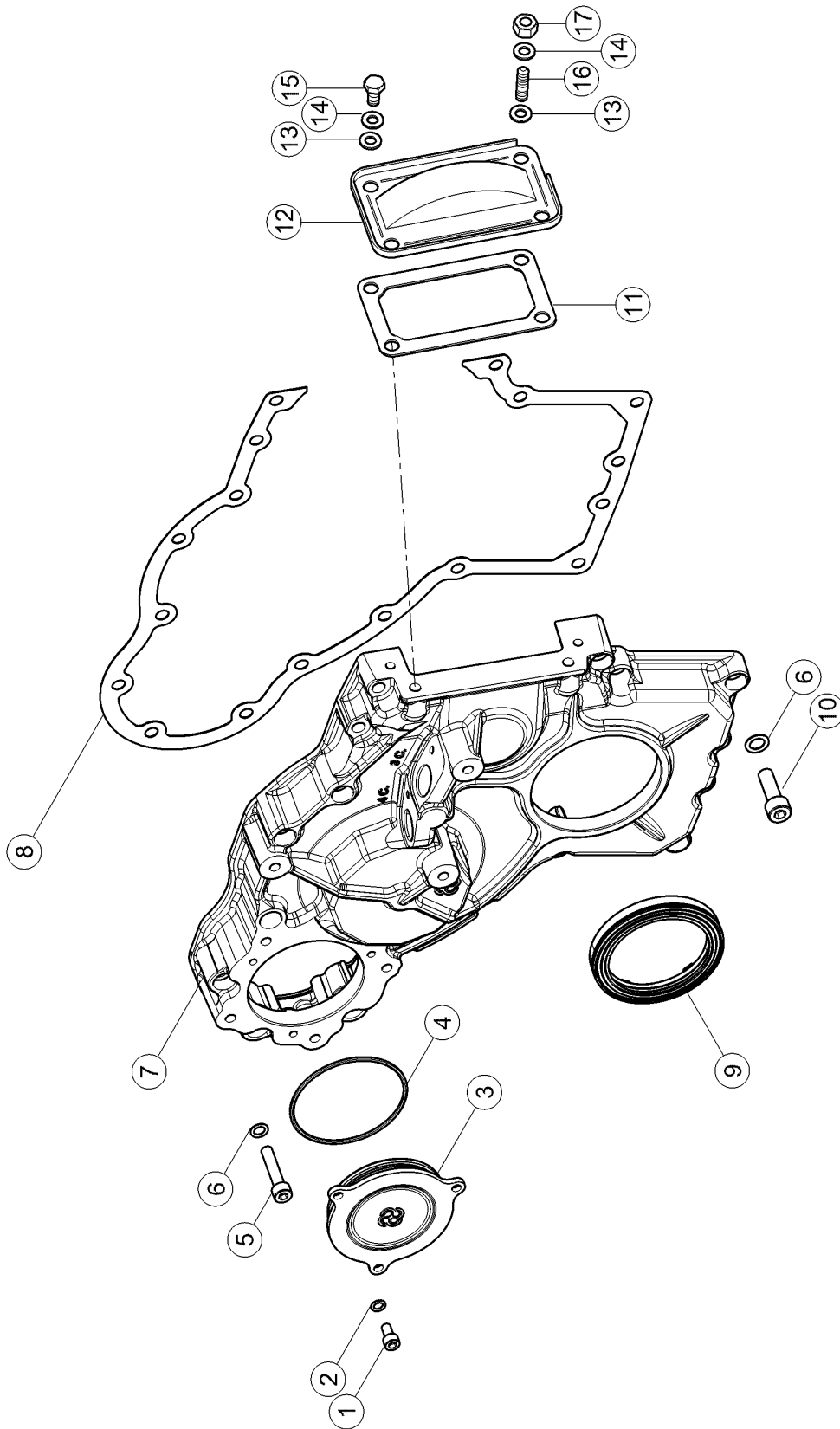
Enter the link into your browser.

The full manual is available for immediate download.

<https://www.ebooklibonline.com>

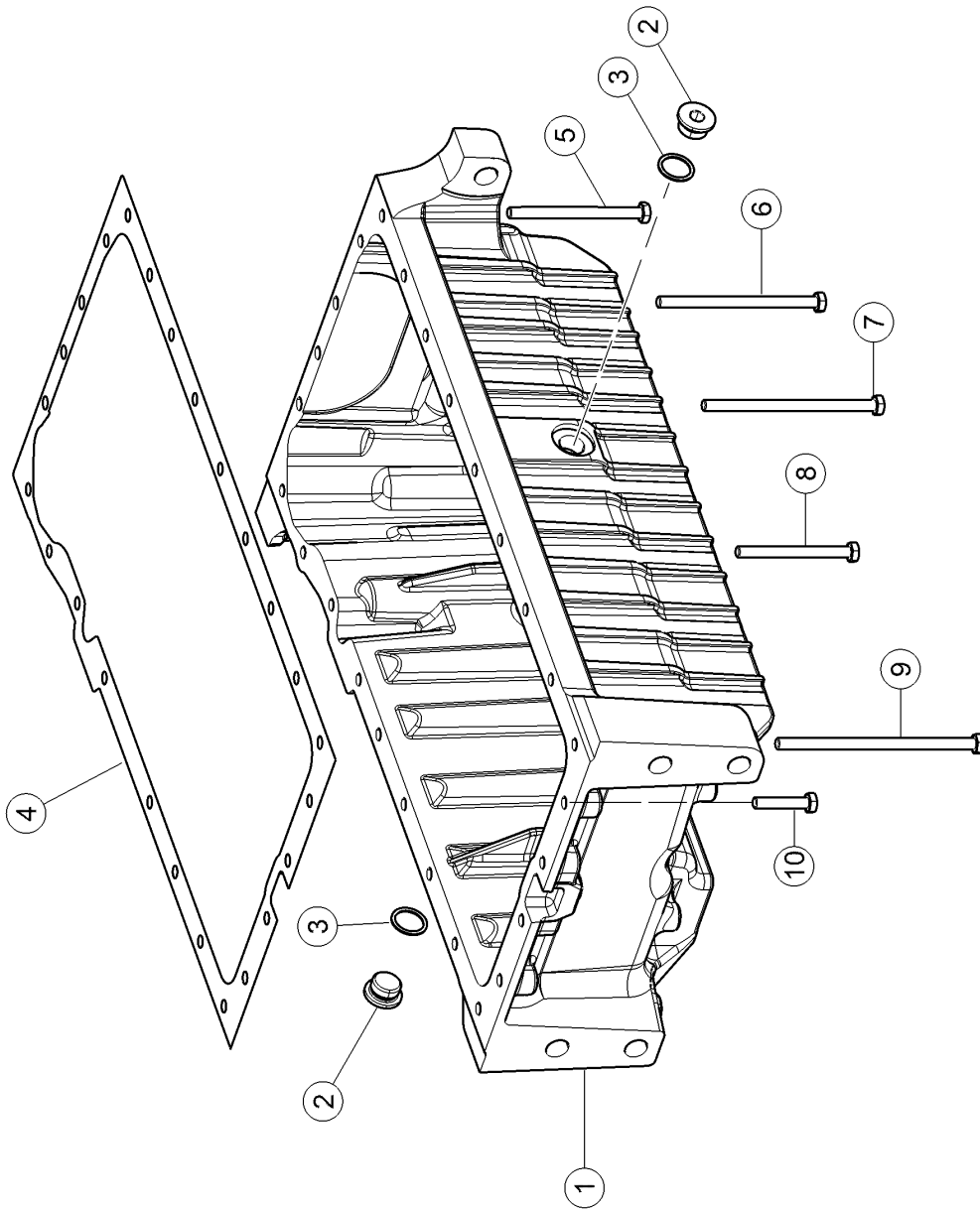
100 CRANKCASE

Pos.	Part No.	Description	Dimension	Quantity	Conditions
1	00 1155 456 1	CRANKCASE		1	
2	00 1155 457 0	BEARING BUSH		1	
3	00 1155 458 0	BEARING BUSH		4	
4	00 1155 459 0	TUBE		1	
5	00 1155 287 0	COVER		1	
6	00 1155 460 0	SHAFT		1	
7	00 1155 461 0	BEARING		1	
8	00 1155 462 0	BUSHING		2	
9	00 1155 463 0	BEARING		3	
10	00 1155 464 0	BEARING		1	
11	00 1163 568 0	SCREW		10	
12	00 1155 466 0	TUBE		1	
13	00 1155 467 0	TUBE		1	
14	00 0243 232 0	CYLINDRICAL PIN	6M6X 16	4	
15	00 0218 467 0	CYLINDRICAL PIN	3M6X 12	4	
16	00 1155 465 0	GASKET		4	



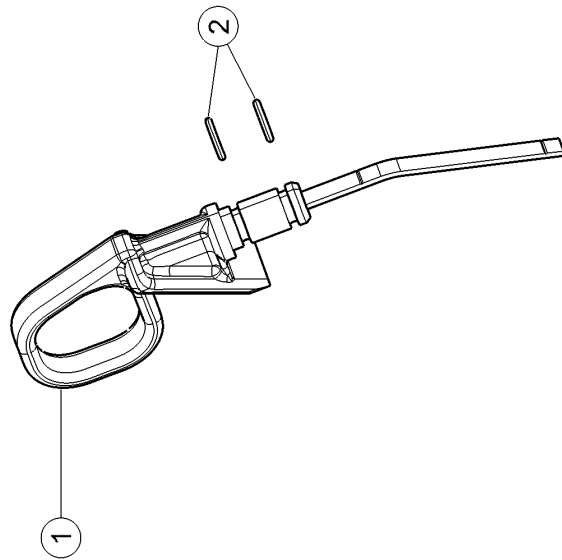
120 TIMING CASE

Pos.	Part No.	Description	Dimension	Quantity	Conditions
1	00 1134 404 0	SCREW		3	
2	00 1156 670 0	SEALING WASHER		3	
3	00 1155 248 0	COVER		1	
4	00 1154 998 0	O-RING		1	
5	77 0300 911 0	SCREW	M8X40	9	
6	79 0305 317 5	WASHER	ERS.D.1070512.1 8X16X1,5 ERS.D.0236912.2	17	
7	00 1155 249 0	CASING		1	
8	00 1155 251 0	FLAT SEAL		1	
9	00 1155 286 0	SEALING RING		1	
10	60 0503 326 9	SCREW		8	
11	00 1155 253 0	FLAT SEAL		1	
12	00 1155 254 0	COVER		1	
13	79 0305 317 5	WASHER	8X16X1,5 ERS.D.0236912.2	4	
14	77 0305 501 1	WASHER	8	4	
15	77 0300 115 8	SCREW	M8X16	2	
16	60 0500 930 4	STUD		2	
17	00 0236 170 0	HEXAGONAL NUT	M8	2	



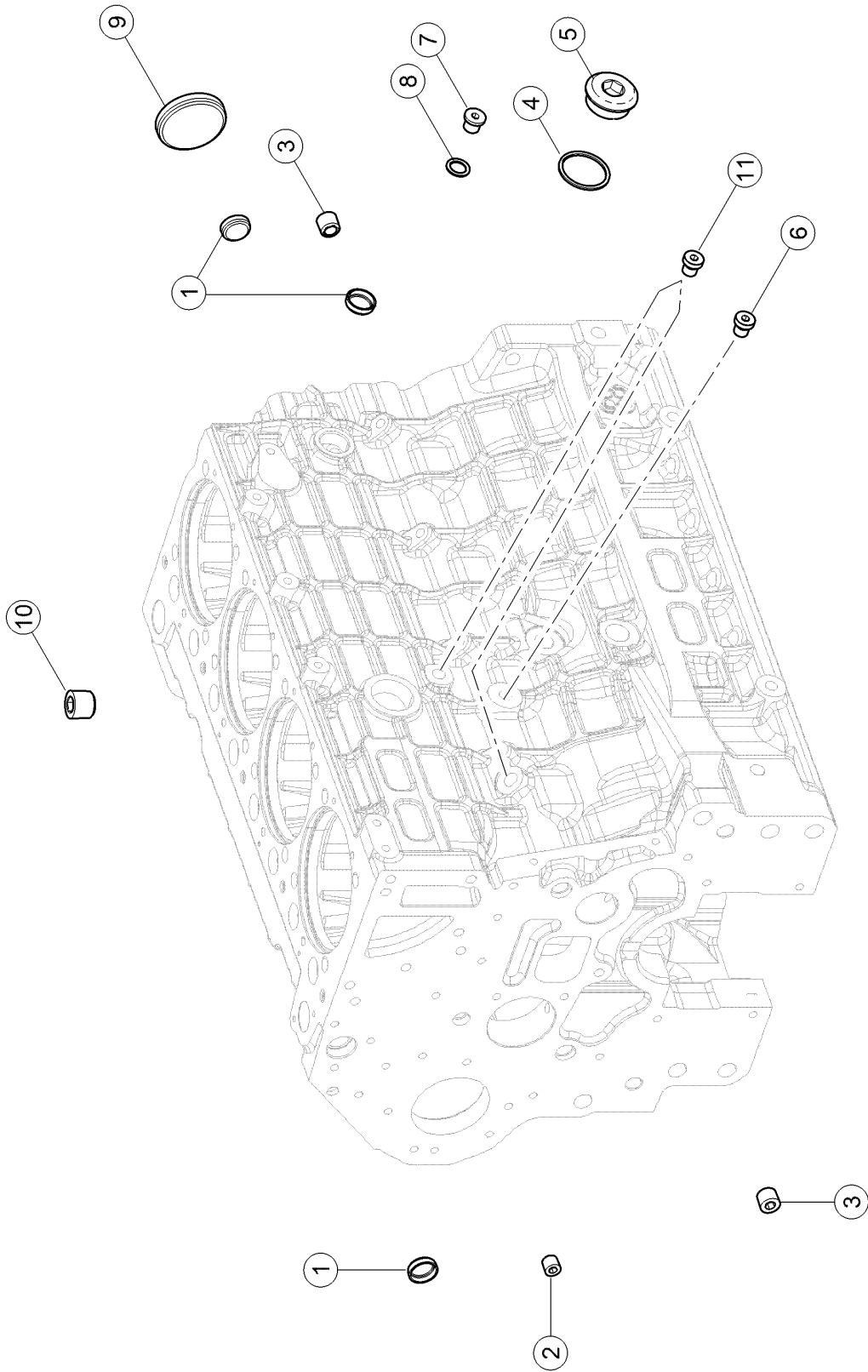
160 OIL PAN

Pos.	Part No.	Description	Dimension	Quantity	Conditions
1	00 1154 054 0	OIL SUMP		1	
2	60 0500 854 0	SCREW PLUG	G1/2A	2	
3	60 0500 930 8	GASKET		2	
4	00 1154 055 0	FLAT SEAL		1	
5	77 0300 117 8	SCREW		2	
6	00 0244 237 0	HEXAGON HEAD BOLT	M8X120	3	
7	00 0238 253 0	HEXAGON HEAD BOLT	M08X130	1	
8	77 0300 117 5	SCREW	M 8X85	1	
9	00 0216 106 0	HEXAGON HEAD BOLT	M 8X150	2	
10	00 0237 340 0	HEXAGON HEAD BOLT	M08X40	17	



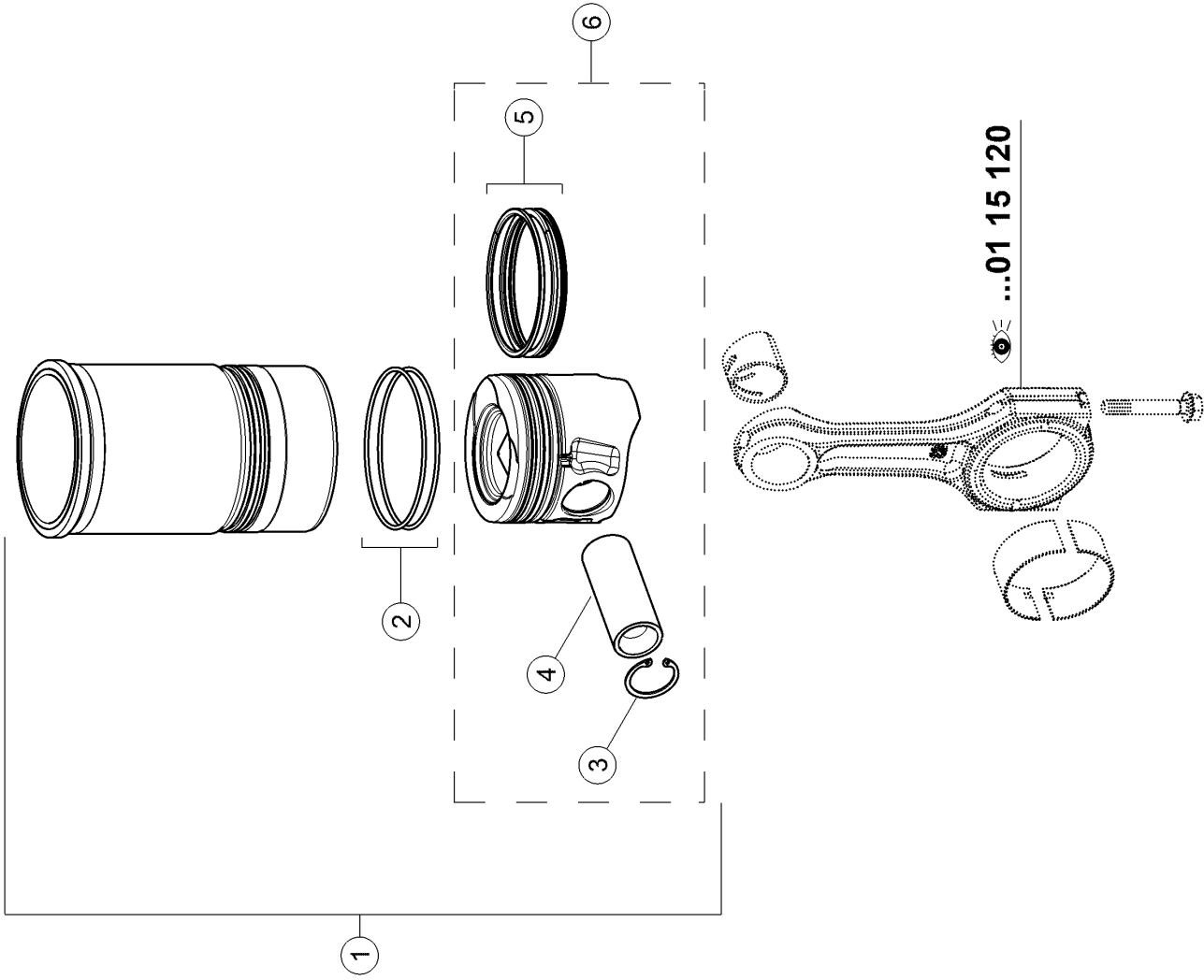
160 OIL PAN

Pos.	Part No.	Description	Dimension	Quantity	Conditions
1	00 1154 058 0	GAUGE		1	
2	00 1156 720 0	SEALING RING		2	



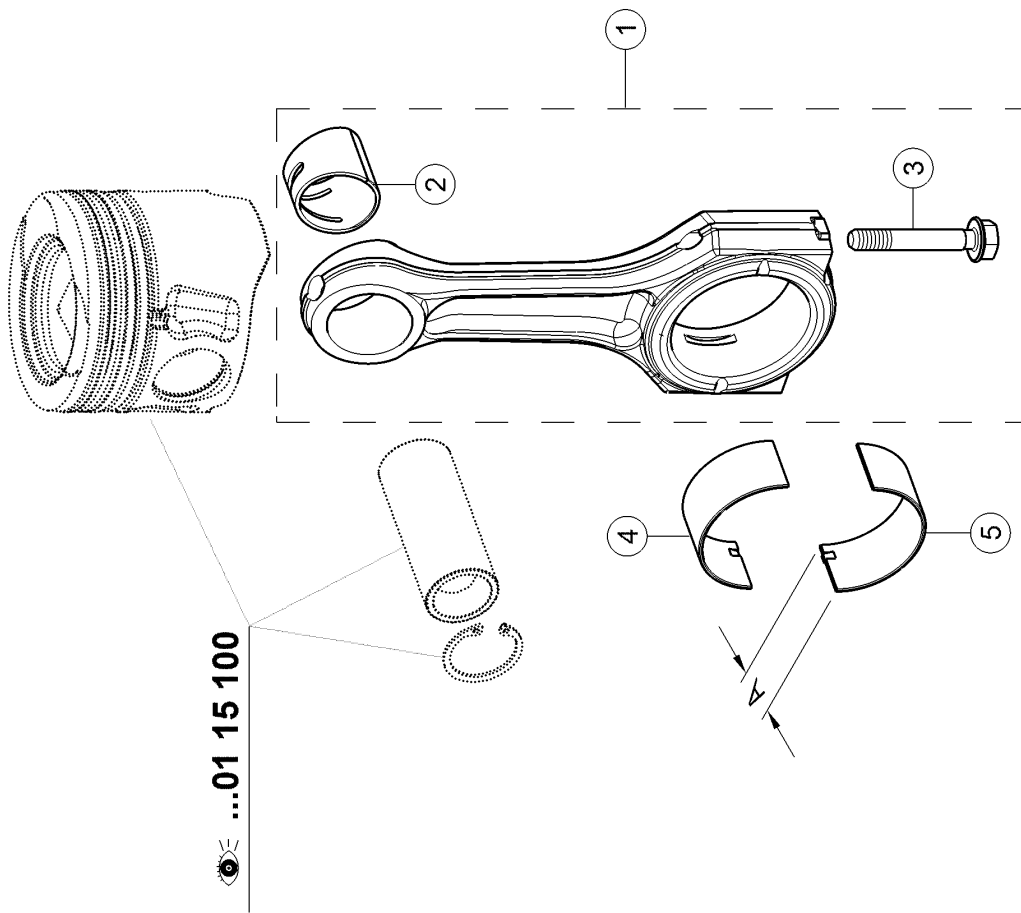
180 PLUGS

Pos.	Part No.	Description	Dimension	Quantity	Conditions
1	00 1154 077 0	BLANKING COVER		5	
2	00 1155 470 0	COVER		2	
3	00 1156 841 0	PLUG		4	
4	00 0217 475 0	SEALING RING	A 38X44X2	1	
5	00 1155 474 0	COVER		1	
6	00 1155 472 0	COVER		1	
7	00 1168 550 0	PLUG	M18 P.1.5	1	
8	00 1167 836 0	SEAL		1	
9	00 1155 287 0	COVER		1	
10	00 1155 477 0	COVER		3	
11	00 1158 050 0	COVER		2	



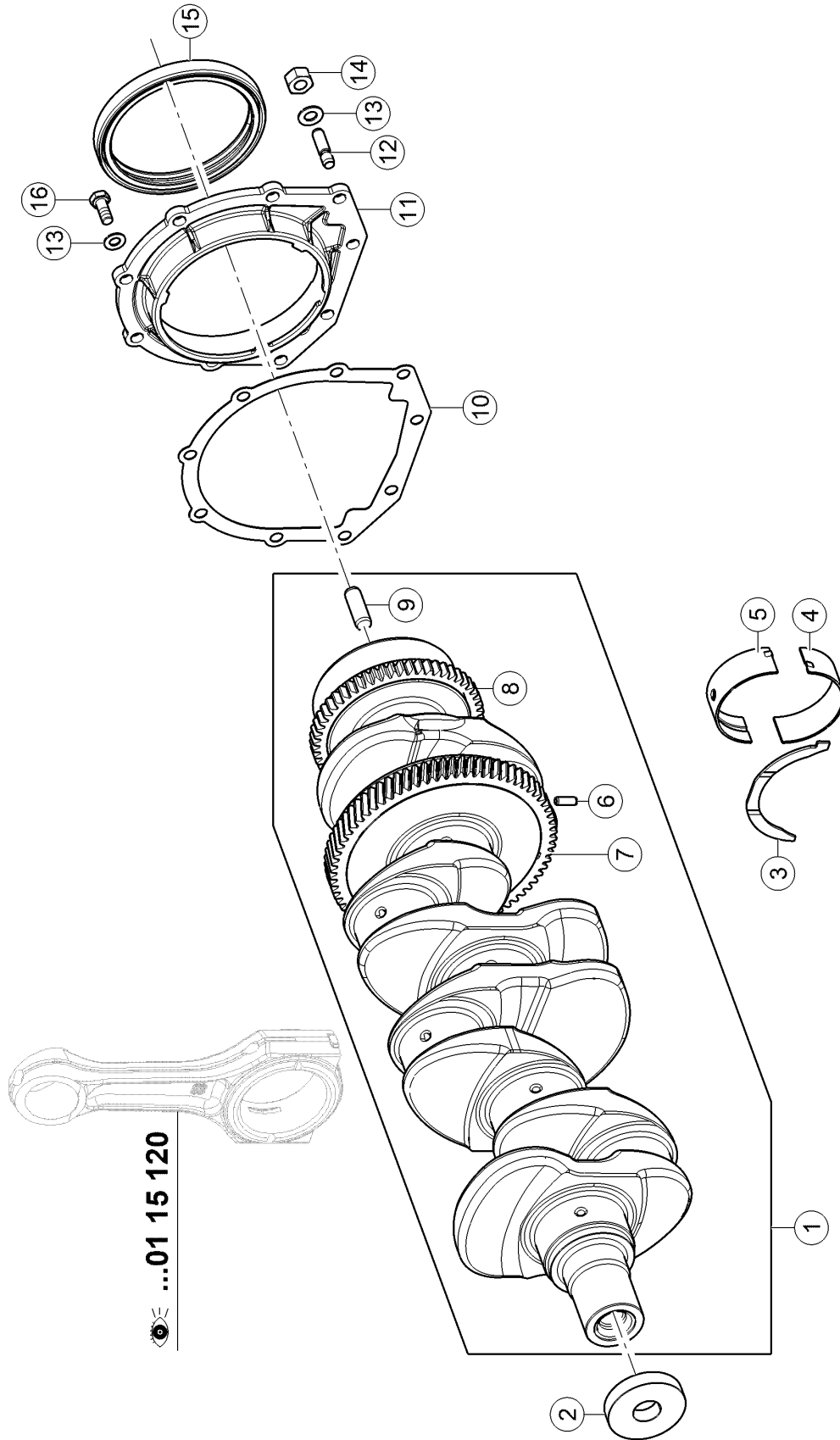
100 CYLINDER LINER, PISTON

Pos.	Part No.	Description	Dimension	Quantity	Conditions
1	00 1155 256 0	PISTON-LINER		4	
2	00 1155 257 0	O-RING		8	
3	60 0500 333 5	INT RETAINING RING		8	
4	00 1155 258 0	SHAFT		4	
5	00 1155 260 0	SET OF PISTON RINGS		4	
6	00 1155 262 0	ENGINE PISTON		4	



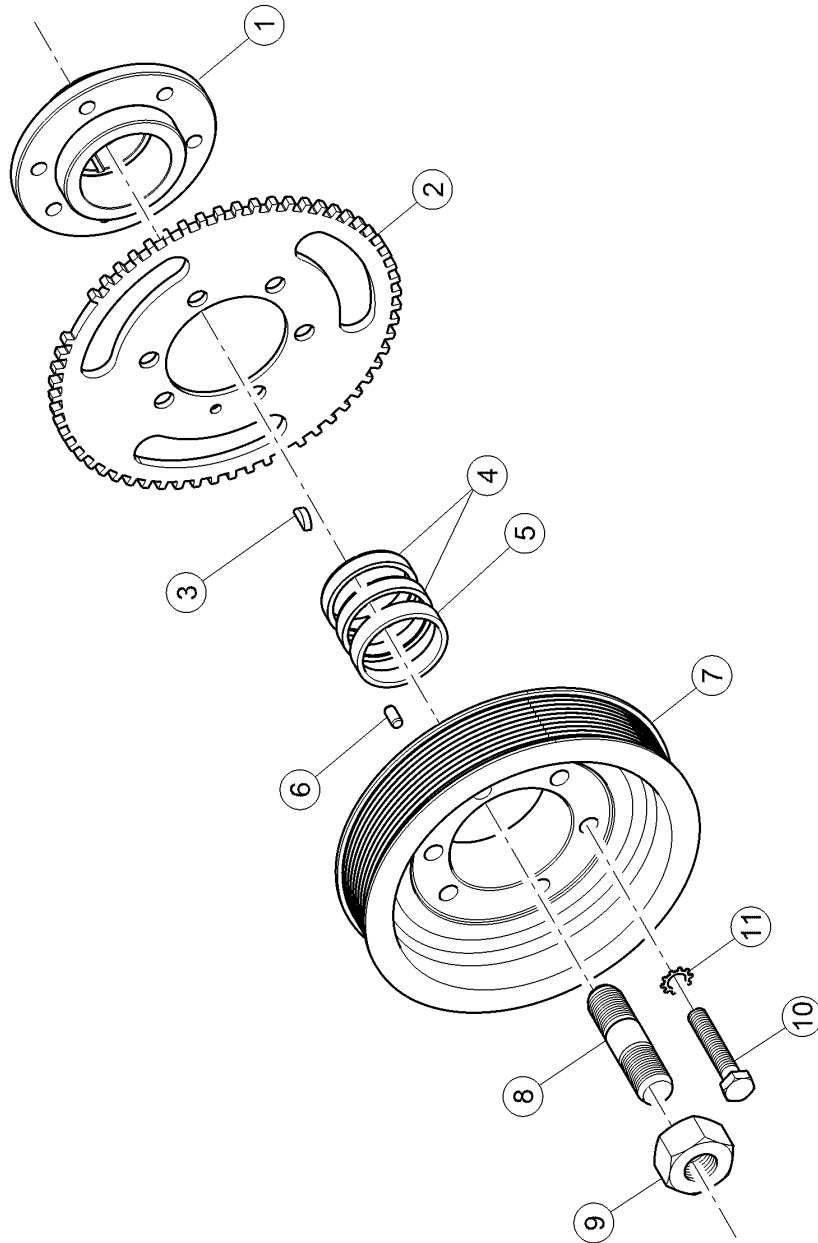
120 CONNECTING ROD, CONNECTING ROD BEARINGS

Pos.	Part No.	Description	Dimension	Quantity	Conditions
1	00 1155 263 0	ROD (ENGINE)		4	
2	00 1155 269 0	BEARING BUSH	34.60X39.130X36.65	4	
3	00 1155 264 0	SCREW		8	
4	00 1155 266 0	BEARING BUSH		4	1)
5	00 1155 268 0	BEARING BUSH		4	1)
1)	Remarks		A = 29.85 -> 30.10		



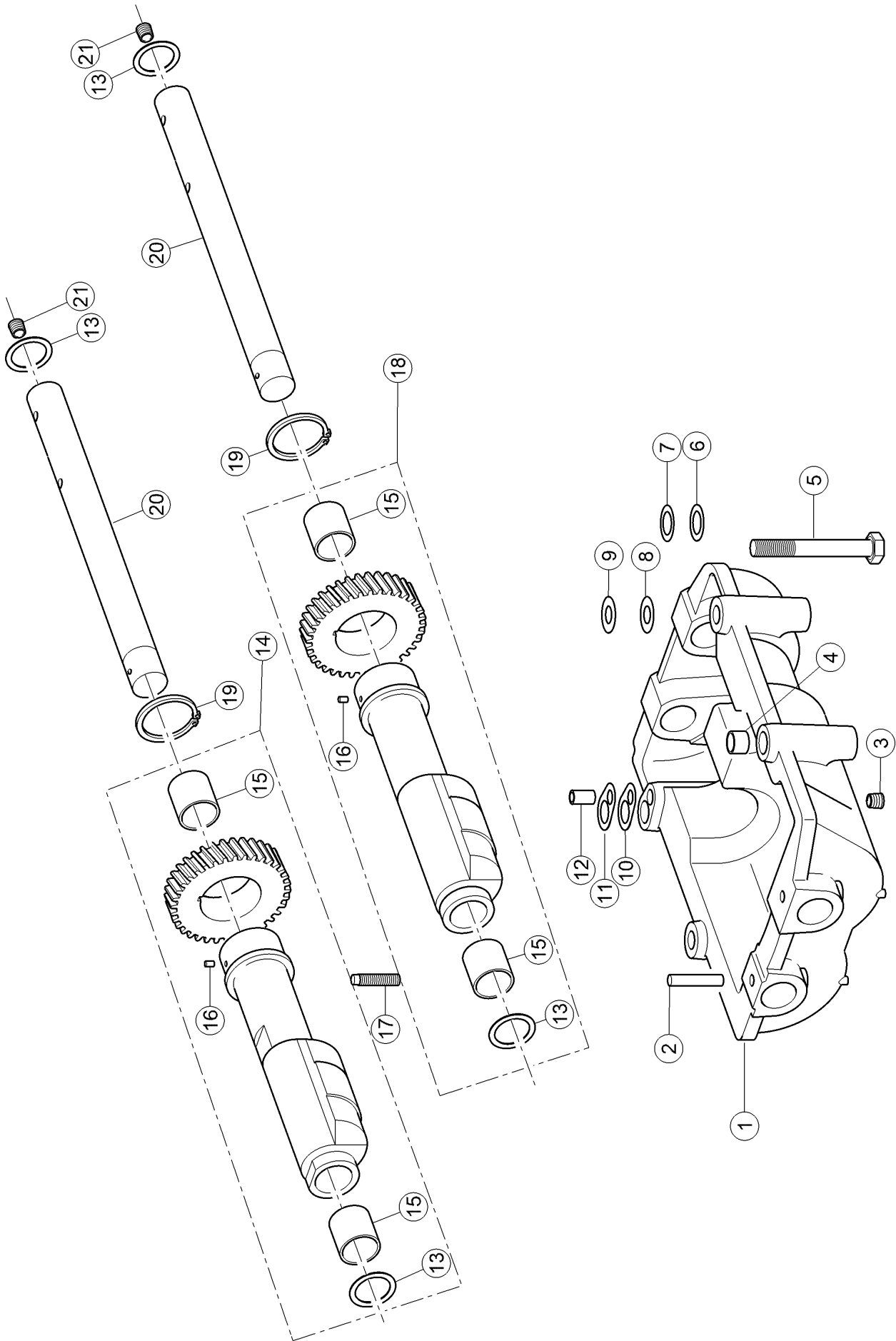
140 CRANKSHAFT

Pos.	Part No.	Description	Dimension	Quantity	Conditions
1	00 1155 270 0	CRANKSHAFT		1	
2	00 1155 271 0	WASHER		1	
3	00 1155 272 0	CHOCK		4	
3	00 1155 273 0	CHOCK		4	
3	00 1155 274 0	CHOCK		4	
4	00 1155 275 0	BEARING BUSH		5	
5	00 1155 276 0	BEARING BUSH		5	
6	00 0235 658 0	SPRING PIN	6 X 16	1	
7	00 1155 278 0	GEAR		1	
8	00 1168 556 0	PINION		1	
9	00 0242 867 0	CYLINDRICAL PIN	12X 35	1	
10	00 1155 281 0	FLAT SEAL		1	
11	00 1155 282 0	BEARING		1	
12	00 1168 557 0	STUD		2	
13	00 0233 684 0	CONICAL SPRING WASHER	8 -8,4X18X2	9	
14	79 0303 201 6	HEX.NUT	M8X1	2	
15	00 1155 284 0	SEALING RING		1	
16	77 0300 182 0	HEX.HEAD BOLT	M08X20	7	



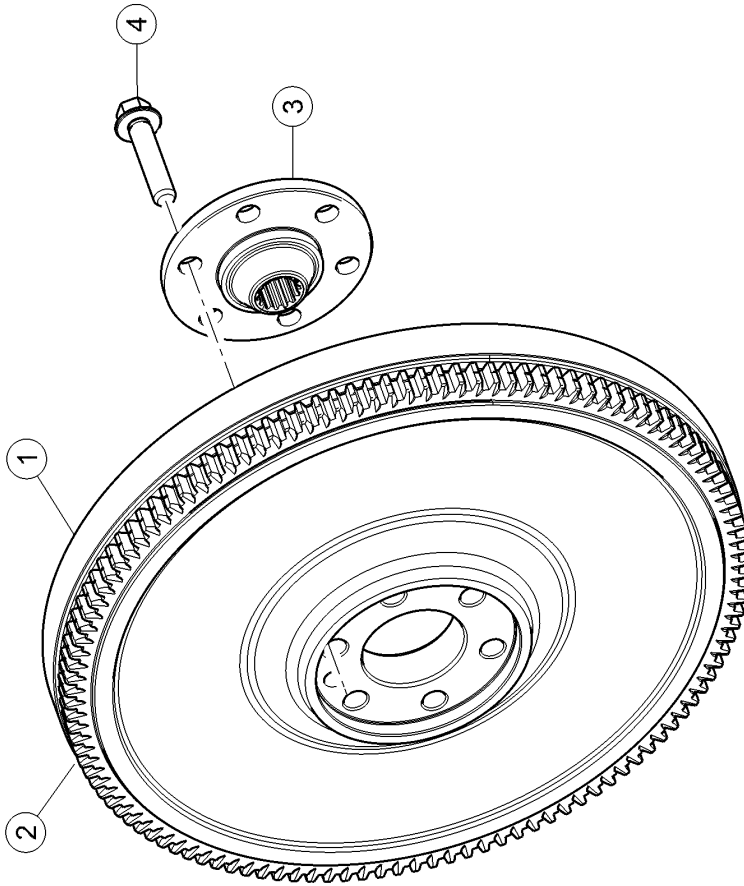
160 CRANKSHAFT PULLEY WHEEL

Pos.	Part No.	Description	Dimension	Quantity	Conditions
1	00 1154 059 0	FLANGE		1	
2	00 1154 060 0	GEAR		1	
3	00 0093 061 0	WOODRUFF KEY	4X6,5	1	
4	00 1154 061 0	SMOOTH RING		2	
5	00 1154 062 0	SPACER		1	
6	00 1154 063 0	CENTRING PIN		1	
7	00 1154 064 0	CRANKSHAFT PULLEY		1	
8	00 1154 065 0	STUD		1	
9	00 1154 066 0	NUT		1	
10	00 0233 572 0	HEXAGON HEAD BOLT	D=M10 L=55	6	
11	00 1156 668 0	TOOTHED WASHER		6	



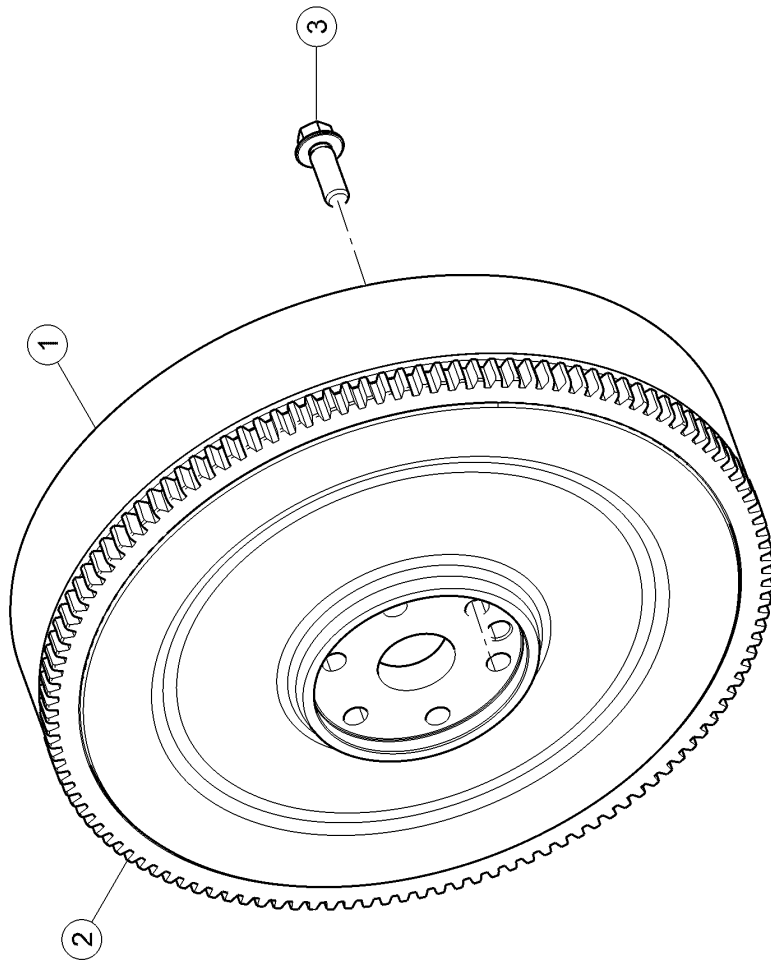
200 MASS BALANCING

Pos.	Part No.	Description	Dimension	Quantity	Conditions
1	00 1155 285 0	CASING		1	
2	50 0306 708 6	PIN	Ø8-40	2	
3	00 1155 287 0	COVER		4	
4	00 1155 288 0	BUSHING		2	
5	00 1155 289 0	STD SCREW		4	
6	00 1155 290 0	SHIM		1	
7	00 1155 291 0	WASHER		3	
8	00 1155 292 0	SHIM		1	
9	00 1155 293 0	WASHER		6	
10	00 1155 294 0	SHIM		1	
11	00 1155 295 0	SHIM		3	
12	00 1155 296 0	BUSHING		1	
13	00 1155 297 0	CHOCK		4	
14	00 1155 298 0	FLYWEIGHT		1	
15	00 1155 299 0	SMOOTH RING		4	
16	00 1155 300 0	PIN		2	
17	00 0242 728 1	THREADED PIN	M 8X30	1	
18	00 1155 302 0	FLYWEIGHT		1	
19	77 0306 610 3	CIRCLIP	45X1,75	2	
20	00 1155 303 0	DRIVE SHAFT		2	
21	00 1155 287 0	COVER		2	



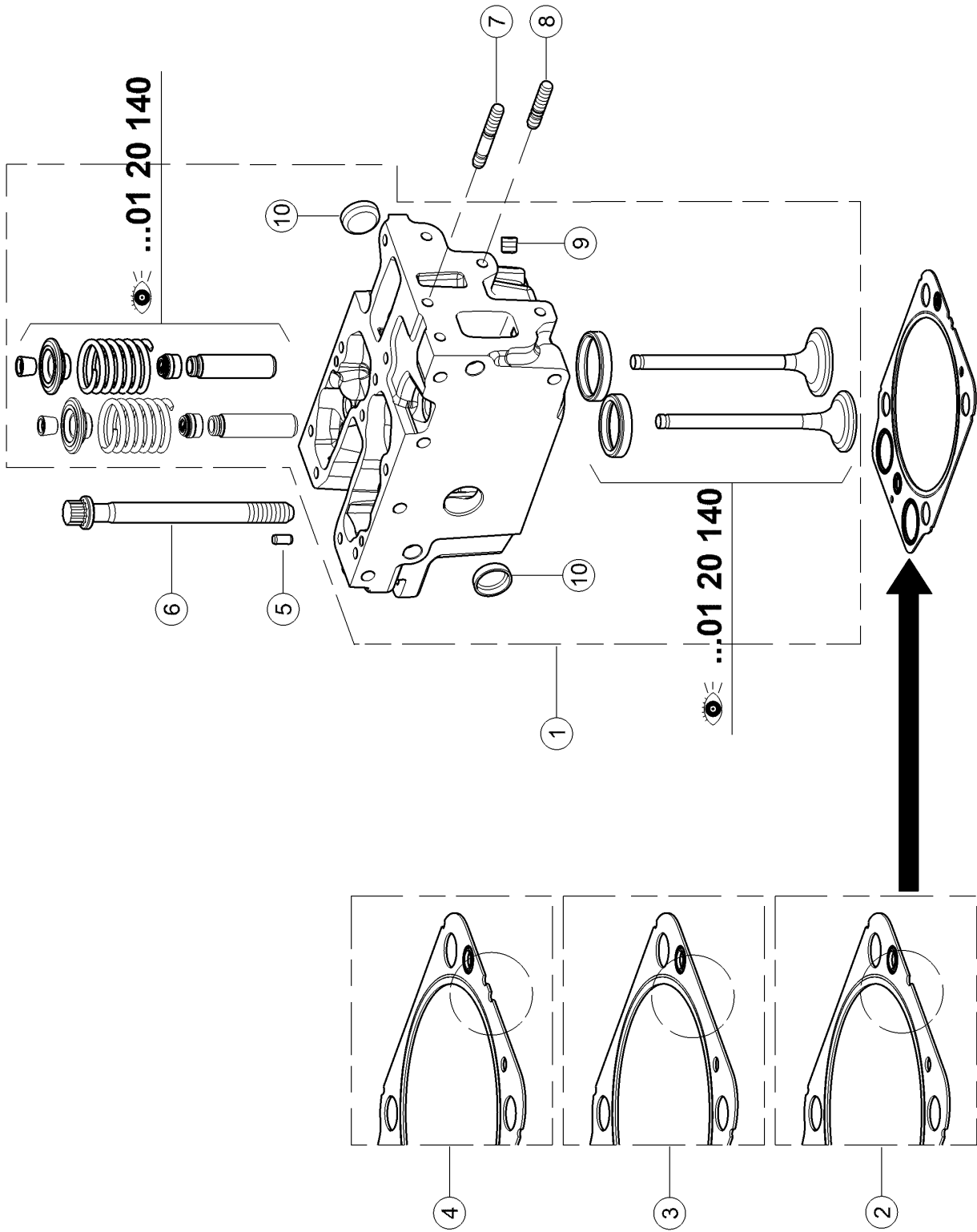
220 FLYWHEEL 1)

Pos.	Part No.	Description	Dimension	Quantity	Conditions
1	00 1166 183 0	FLYWHEEL		1	
2	00 1154 504 0	CROWN WHEEL		1	2)
3	00 1154 069 0	FLANGE		1	
4	00 1154 070 0	STD SCREW		6	
1)	Equipment	TM_N00_0010	Mechanical reverser		
2)	Remarks		123 dts.		



220 FLYWHEEL 1)

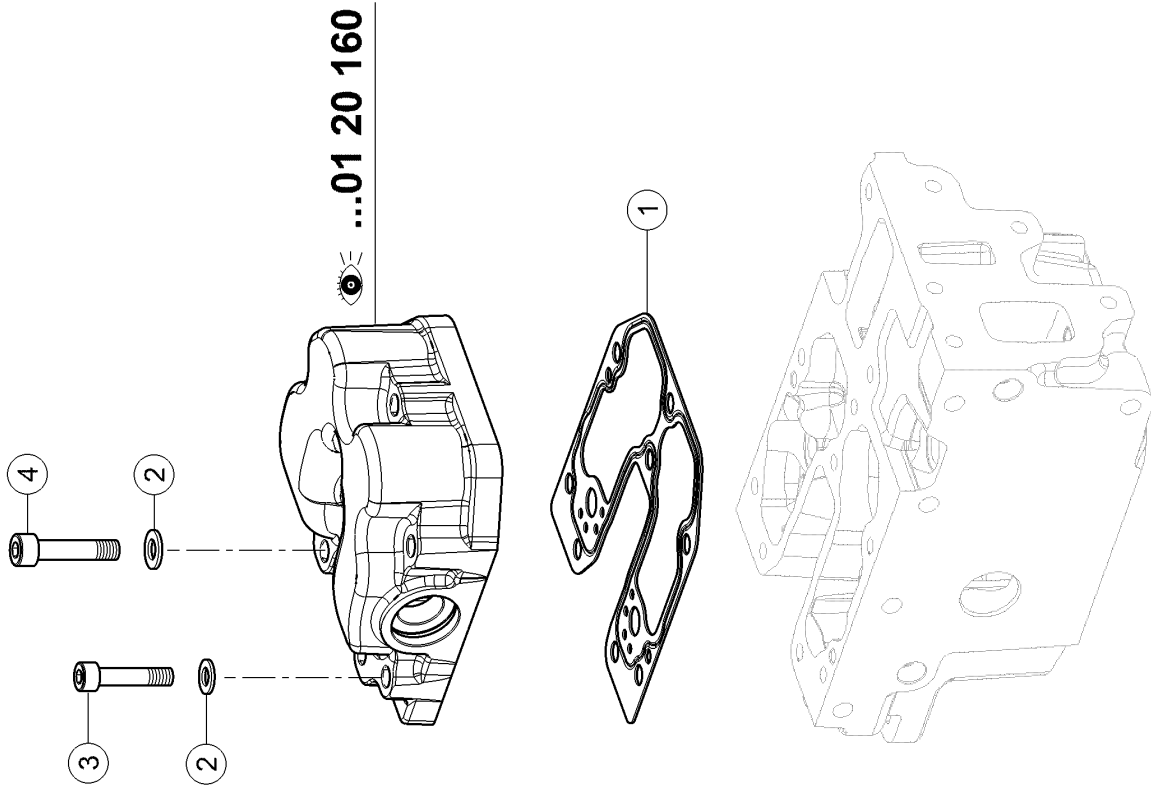
Pos.	Part No.	Description	Dimension	Quantity	Conditions
1	00 1154 503 0	FLYWHEEL		1	
2	00 1154 504 0	CROWN WHEEL		1	2)
3	00 1154 505 0	STD SCREW		6	
1)	Equipment	TM_N00_0020	REVERSHIFT electronic clutchless reverser		
2)	Remarks		123 dts.		



100 CYLINDER HEAD

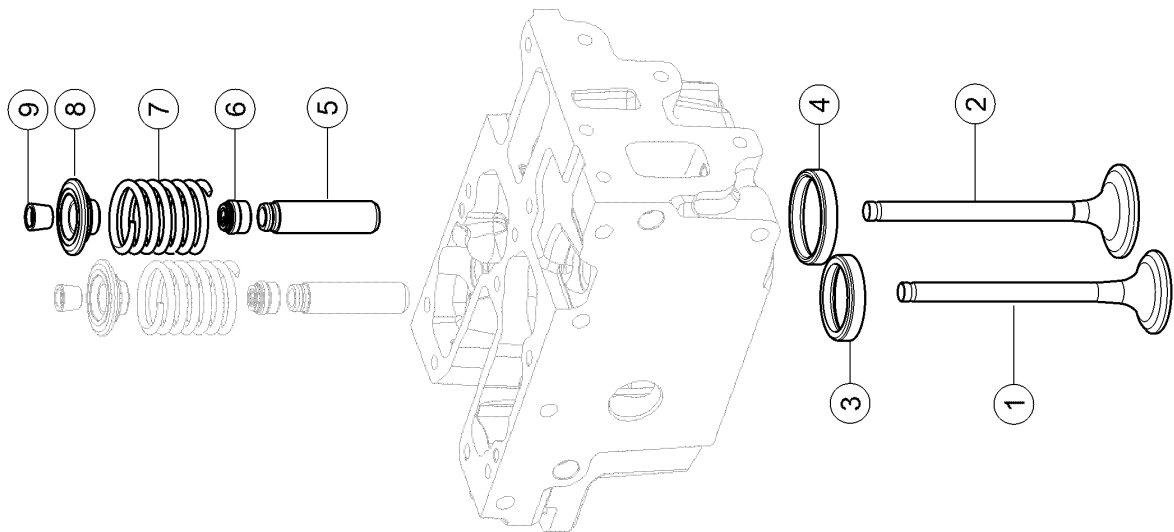
Pos.	Part No.	Description	Dimension	Quantity	Conditions
1	00 1154 071 0	CYLINDER HEAD		4	
2	00 1154 072 0	CYLINDER HEAD GASKET		1	1)
3	00 1154 073 0	CYLINDER HEAD GASKET		1	2)
4	00 1154 074 0	CYLINDER HEAD GASKET		2	3)
5	00 1154 063 0	CENTRING PIN		8	
6	00 1154 075 0	SCREW		16	
7	60 0500 933 5	STUD		4	
8	60 0500 930 4	STUD		4	
9	00 1155 287 0	COVER		4	
10	00 1154 077 0	BLANKING COVER		8	

1) Remarks	ép.1,20mm
2) Remarks	ép.1,40mm
3) Remarks	ép.1,60mm



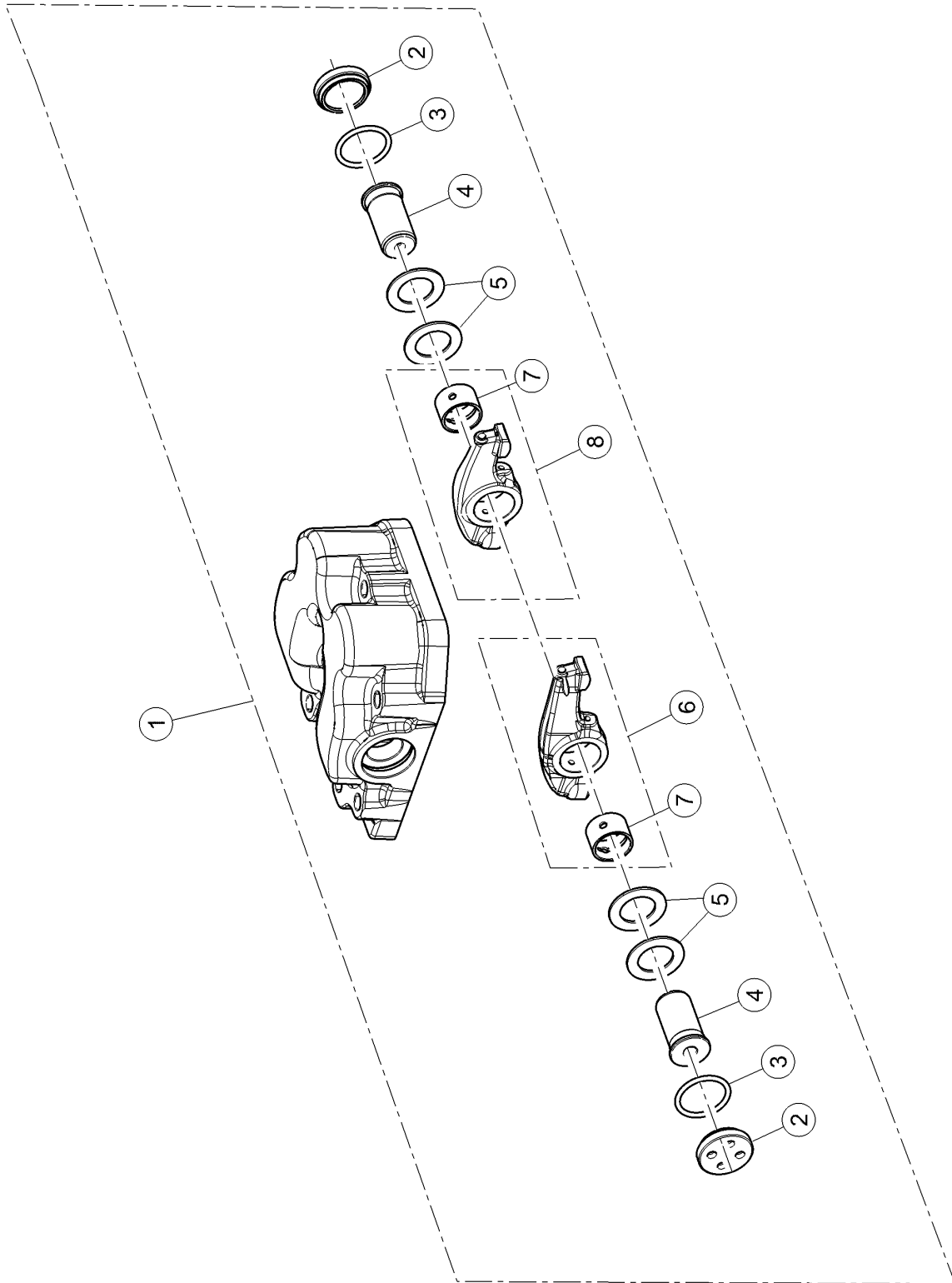
120 CYLINDER HEAD COVER

Pos.	Part No.	Description	Dimension	Quantity	Conditions
1	00 1154 078 0	FLAT SEAL		4	
2	00 0236 912 2	FLAT WASHER	8 - 8,4X16X1,6	32	
3	00 0238 043 1	SOCKET HEAD SCREW	M 8X 40	16	
4	00 0216 556 0	SOCKET HEAD SCREW	M 8X 50	16	



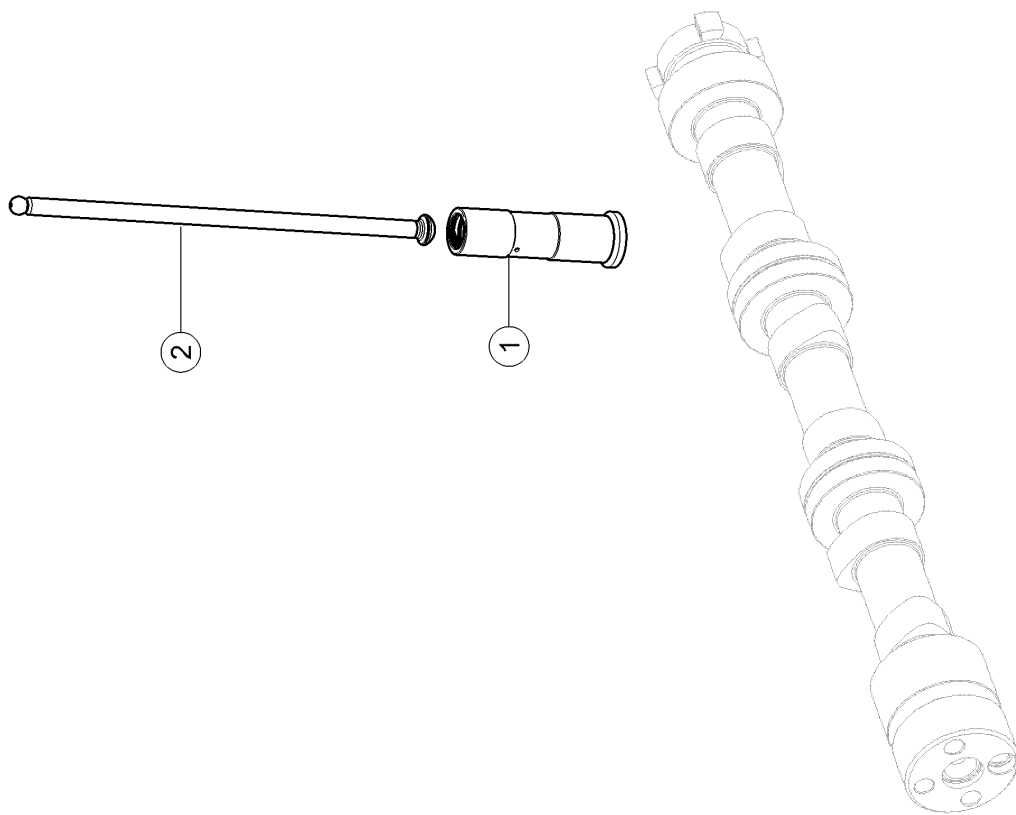
140 VALVES

Pos.	Part No.	Description	Dimension	Quantity	Conditions
1	00 1154 079 0	ENGINE VALVE		4	1)
2	00 1154 080 0	ENGINE VALVE		4	2)
3	00 1154 081 0	VALVE SEAT		4	1)
4	00 1154 082 0	VALVE SEAT		4	2)
5	00 1154 083 0	GUIDE		8	
6	00 1154 084 0	GASKET		8	
7	00 1154 086 0	SPRING		8	
8	00 1154 087 0	CUP		8	
9	00 1154 088 0	HALF-CONE		16	
1)	Remarks		Echapt		
2)	Remarks		Adm.		



160 ROCKER ARM

Pos.	Part No.	Description	Dimension	Quantity	Conditions
1	00 1154 090 0	ROCKER COVER		4	
2	00 1154 091 0	COVER		8	
3	00 0219 294 0	O-RING	25,07X2,62-N	8	
4	00 1154 092 0	SHAFT		8	
5	00 1154 093 0	WASHER		16	
6	00 1154 094 0	ROCKER ARM		4	
7	00 1154 095 0	BEARING BUSH		8	
8	00 1154 096 0	ROCKER ARM		4	





Suggest:

For more complete manuals. Please go to the home page.

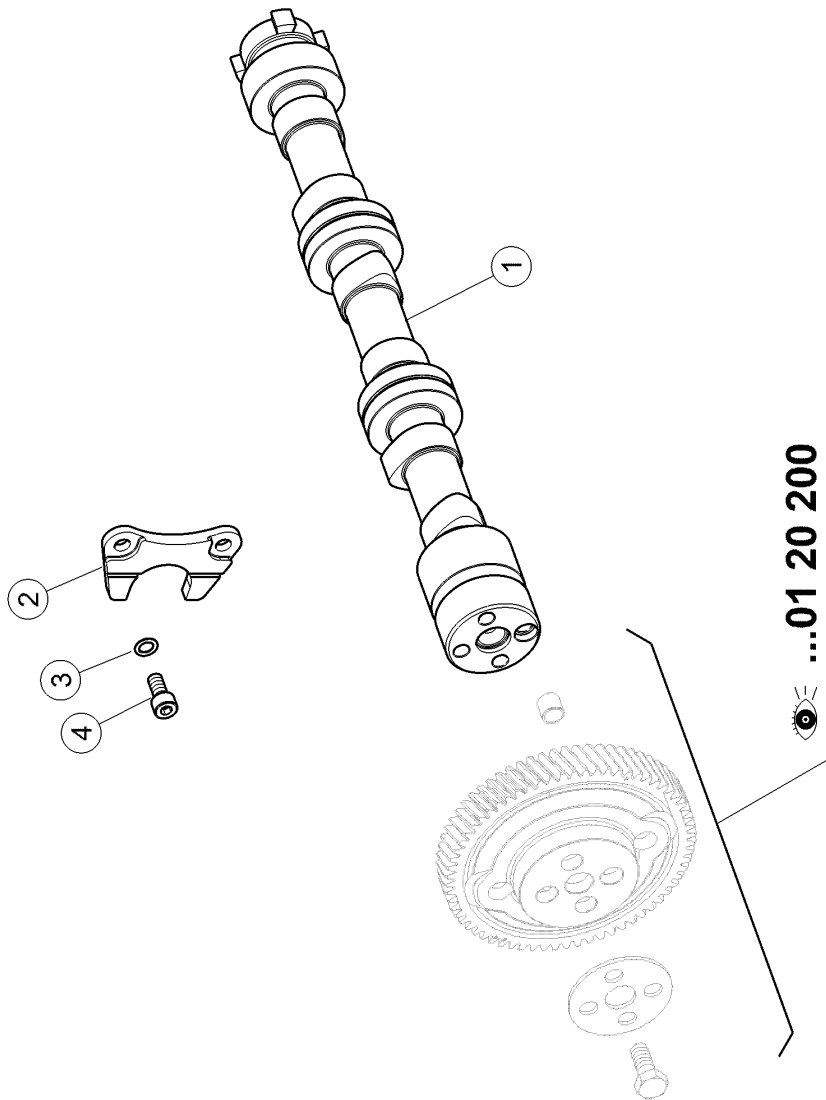
<https://www.ebooklibonline.com>

If the above button click is invalid. Please download this document first, and then click the above link to download the complete manual.

Thank you so much for reading

160 ROCKER ARM

Pos.	Part No.	Description	Dimension	Quantity	Conditions
1	00 1154 097 0	PUSHROD		8	
2	00 1154 098 0	ROD		8	



180 CAMSHAFT, CAMSHAFT BEARING BUSHES

Pos.	Part No.	Description	Dimension	Quantity	Conditions
1	00 1154 099 0	CAMSHAFT		1	
2	00 1154 100 0	PAD		1	
3	00 1156 671 0	LOCK WASHER	S 8-8,4X13X0,7X1,4	2	
4	00 0214 749 0	SOCKET HEAD SCREW	M 8X 20	2	

<https://www.ebooklibonline.com>

Hello dear friend!

Thank you very much for reading.

Enter the link into your browser.

The full manual is available for immediate download.

<https://www.ebooklibonline.com>