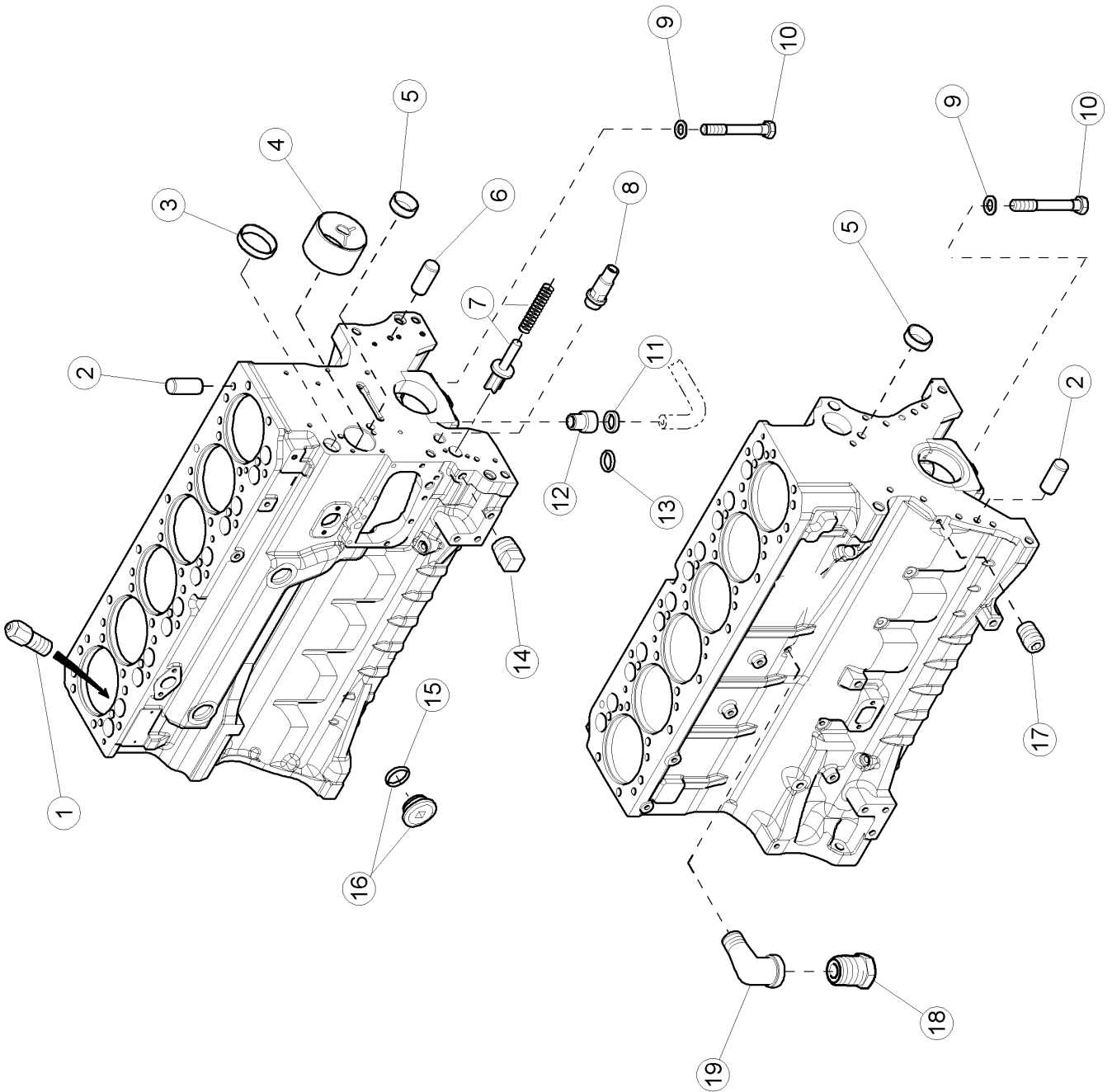


010 COMPLETE ENGINE

Pos.	Part No.	Description	Dimension	Quantity	Conditions
1	00 1108 252 0	ENGINE		1	1)
1	00 1108 253 0	ENGINE	103 KW	1	2)
1	00 1108 254 0	ENGINE		1	3)
1	00 2176 948 0	ENGINE	116 KW	1	4)
1)	Homologationtype		+ 2004 125CH		
2)	Homologationtype		+ 2014 135CH		
3)	Homologationtype		+ 2024 150CH		
4)	Homologationtype		+ 2034 160CH		



<https://www.ebooklibonline.com>

Hello dear friend!

Thank you very much for reading.

Enter the link into your browser.

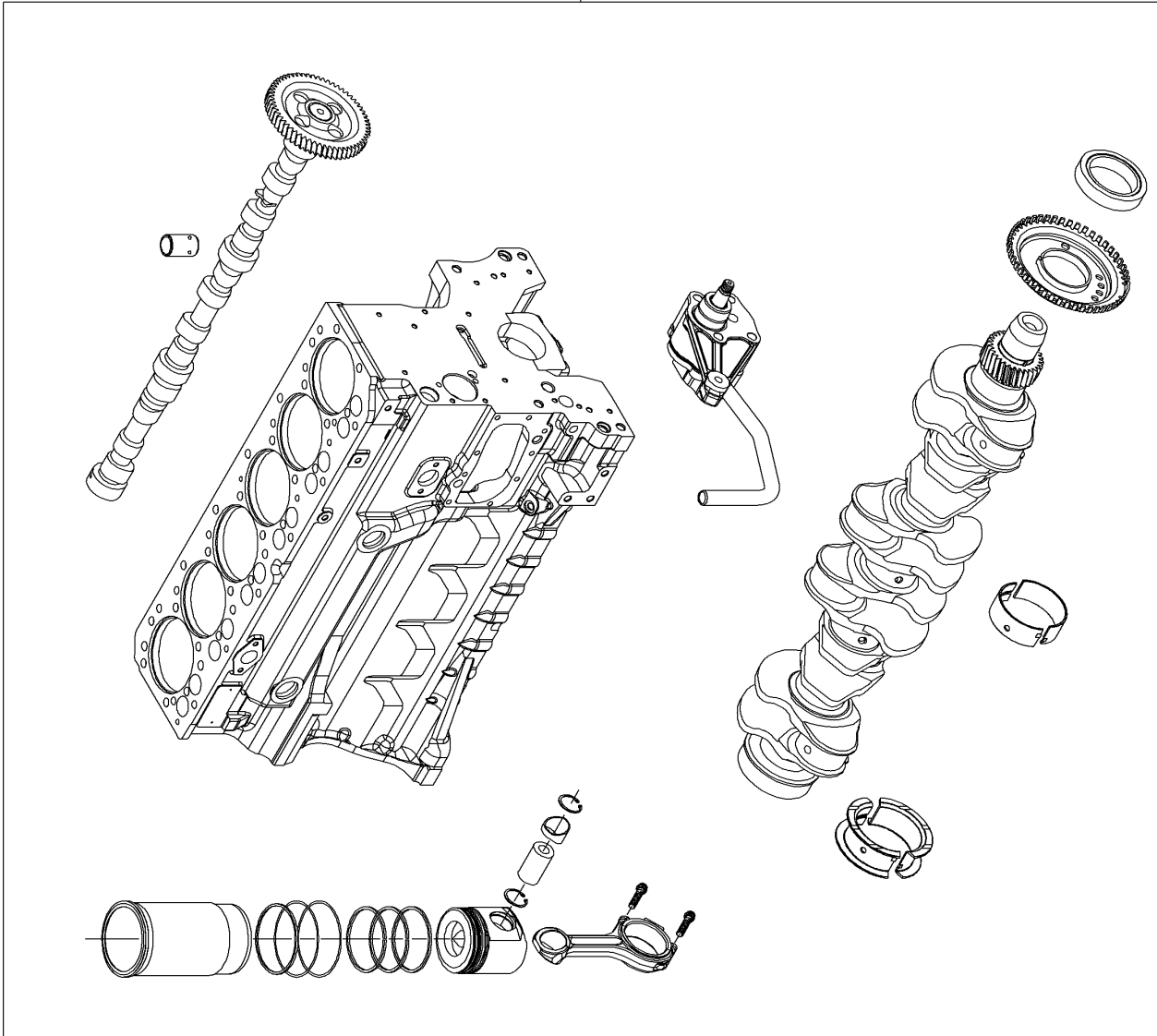
The full manual is available for immediate download.

<https://www.ebooklibonline.com>

100 CRANKCASE

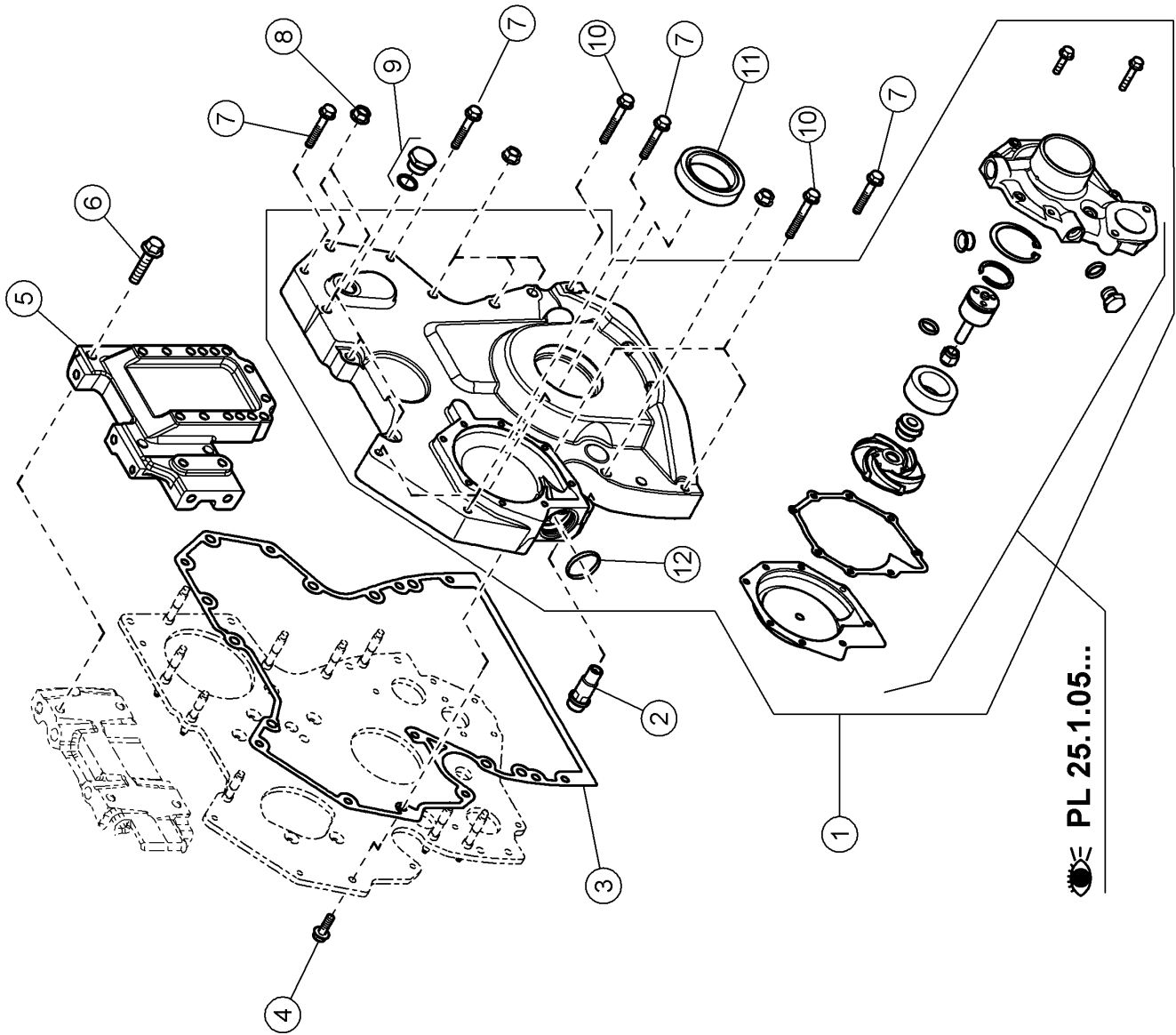
Pos.	Part No.	Description	Dimension	Quantity	Conditions
1	60 0502 143 6	SPRAY NOZZLE		6	
2	60 0501 317 4	CENTRING PIN		2	
3	60 0502 143 9	BLANKING COVER		1	
4	60 0501 294 1	BEARING		1	
5	60 0501 319 8	BLANKING COVER		2	
6	60 0501 319 6	CENTRING PIN		1	
7	60 0501 402 9	VALVE		1	
8	60 0502 869 1	VALVE		1	
9	60 0502 143 7	WASHER	13X22X2,5	14	
10	60 0501 320 6	SCREW		14	
11	60 0501 334 1	O-RING		1	
12	60 0501 597 2	BUSHING		1	
13	60 0501 320 3	O-RING		1	
14	60 0501 597 1	LOCK		1	
15	60 0502 339 4	O-RING		1	
16	60 0502 905 2	PLUG		1	
17	00 1141 206 0	PLUG		1	
18	60 0502 665 3	PLUG		1	
19	00 1132 468 0	ELBOW CONNECTOR		1	

1



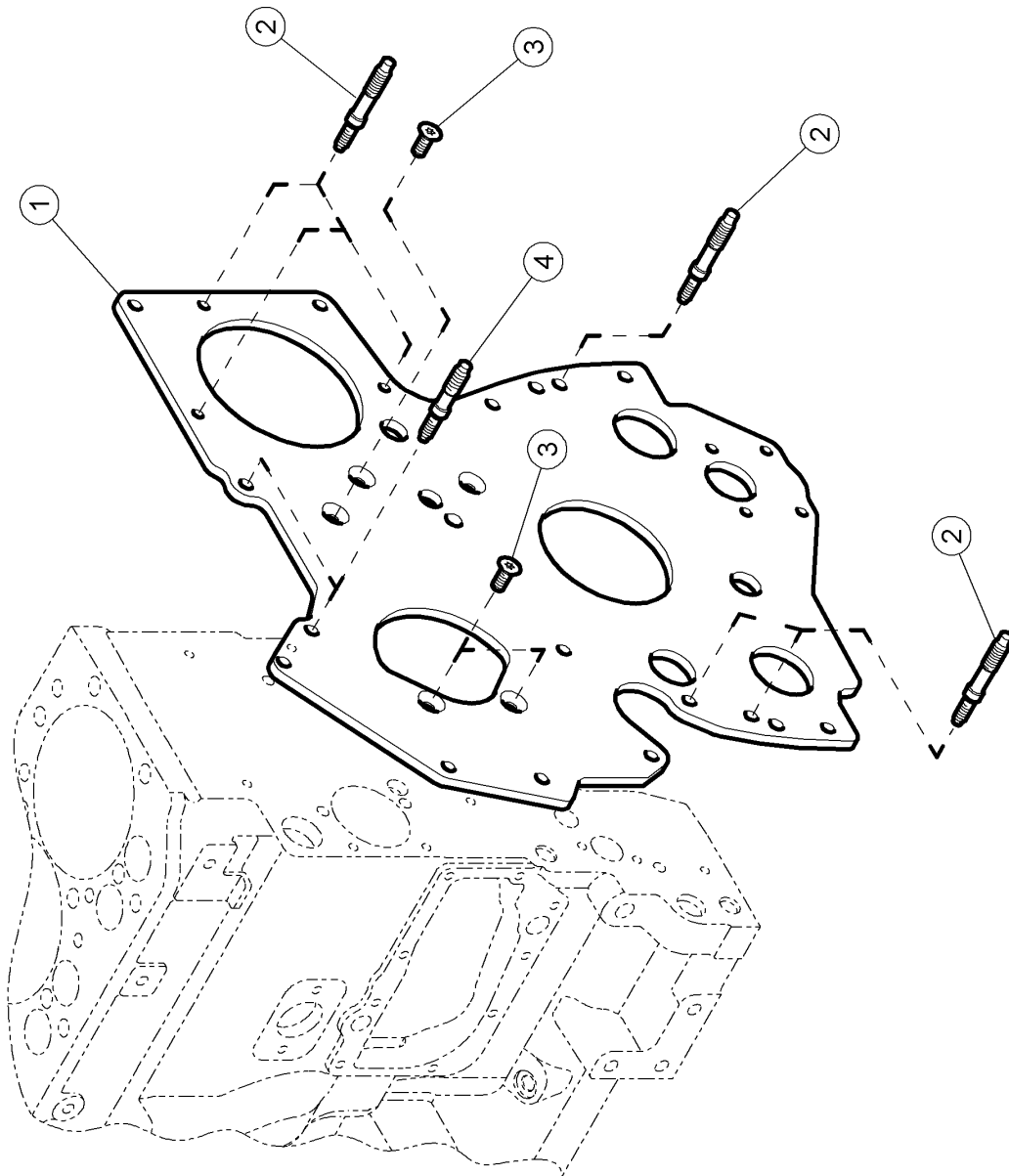
100 CRANKCASE

Pos.	Part No.	Description	Dimension	Quantity	Conditions
1	00 1141 781 0	SHORT BLOCK		1	



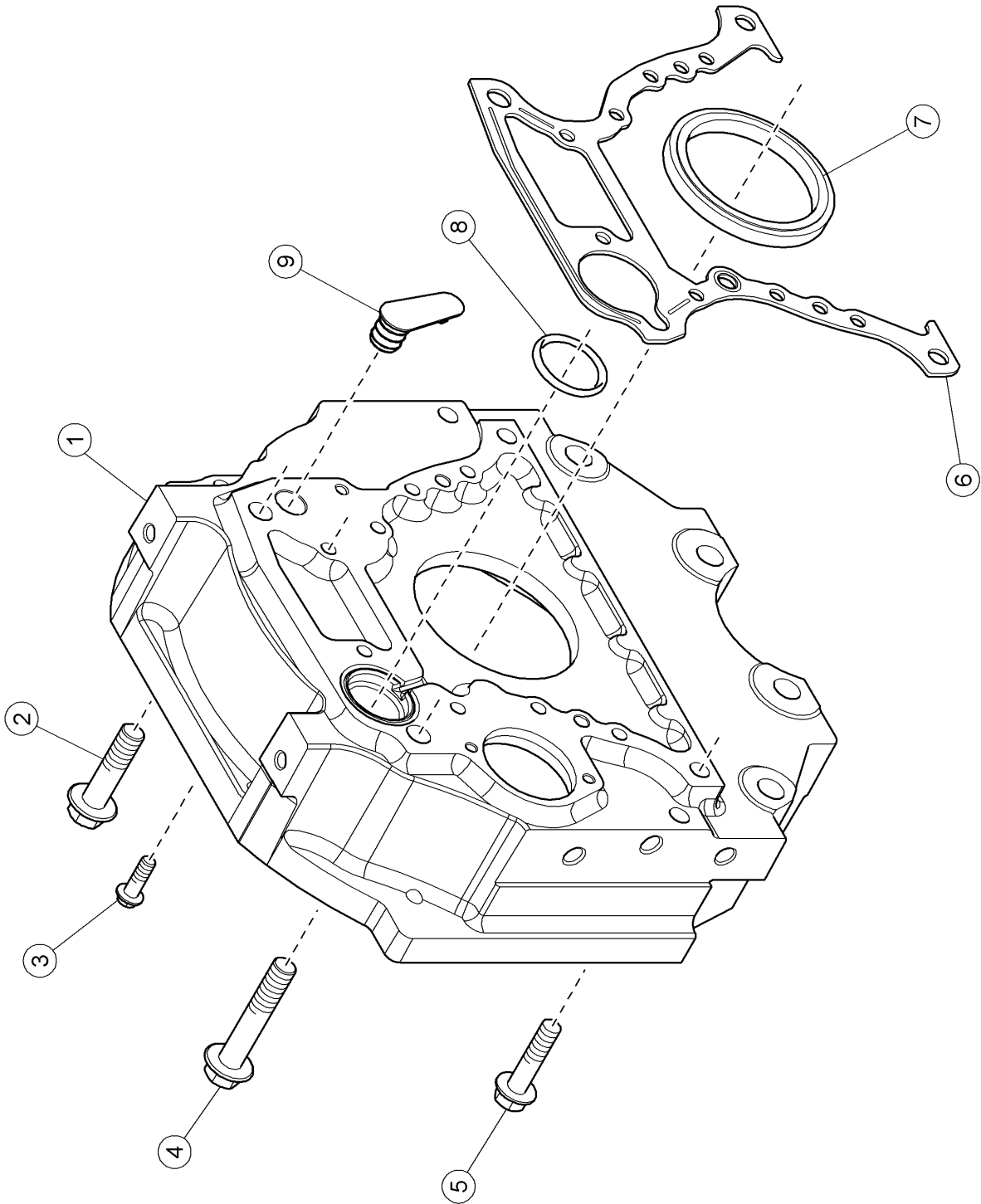
120 TIMING CASE

Pos.	Part No.	Description	Dimension	Quantity	Conditions
1	00 1162 414 0	CASING		1	
2	60 0502 869 1	VALVE		1	
3	00 1162 416 0	FLAT SEAL		1	
4	60 0502 145 6	SCREW	M8X25	1	
5	00 1132 471 0	SUPPORT		1	
6	00 1135 539 0	SCREW	M10X45	4	
7	60 0502 593 6	SCREW	M8X50	5	
8	60 0502 144 9	NUT		9	
9	60 0502 160 3	LOCK	M22X1,5	1	
10	60 0502 145 0	SCREW	M08X60	3	
11	00 1141 365 0	SEAL RING		1	
12	60 0500 796 4	O-RING	37,69 X 3,53 NBR 80	1	



120 TIMING CASE

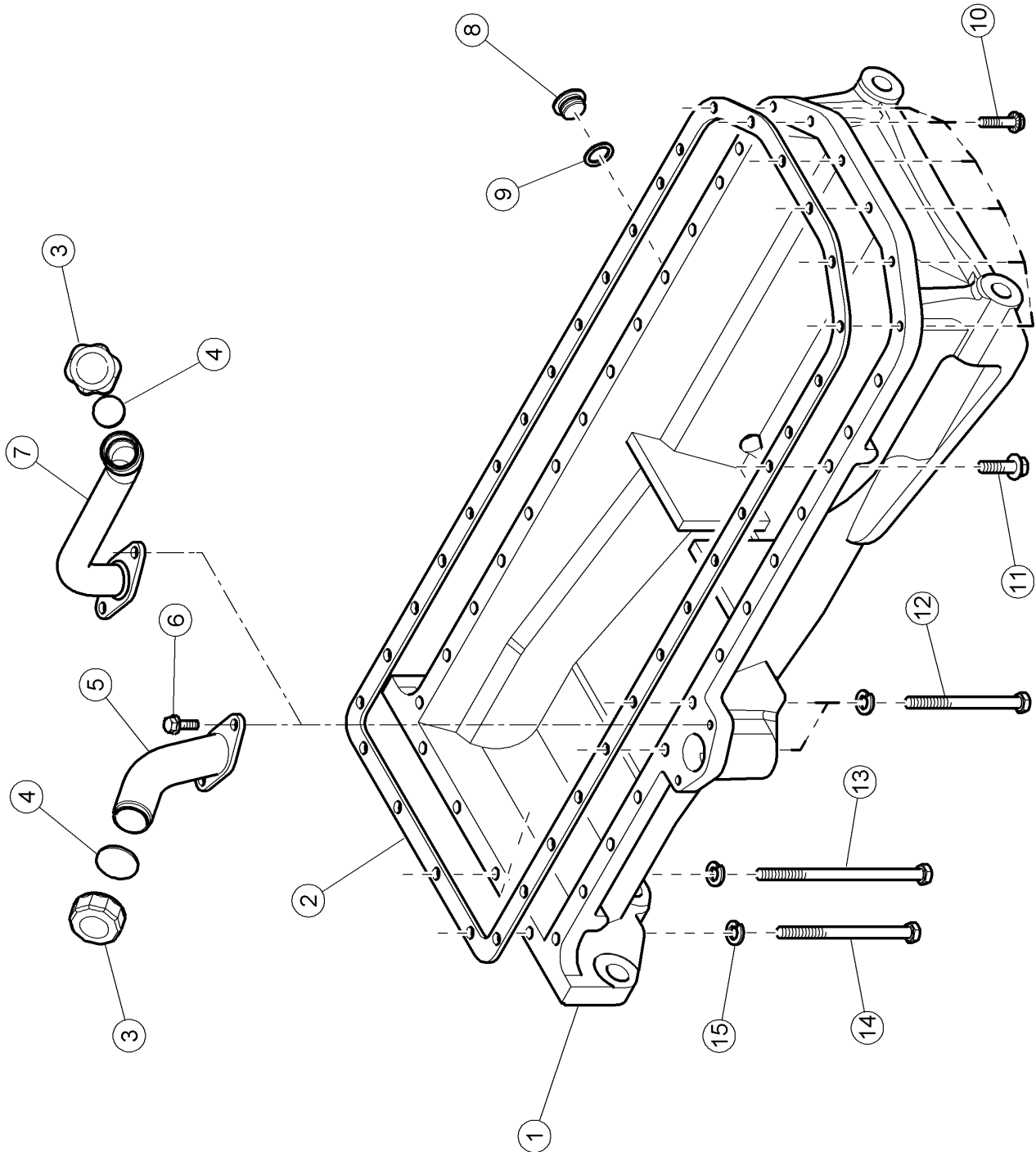
Pos.	Part No.	Description	Dimension	Quantity	Conditions
1	00 1132 472 0	PLATE		1	
2	00 1132 473 0	STUD BOLT		7	
3	60 0502 339 7	SCREW		5	
4	60 0502 339 8	STUD BOLT		2	



140 FLYWHEEL HOUSING

Pos.	Part No.	Description	Dimension	Quantity	Conditions
1	77 0006 967 3	CASING		1	
2	60 0502 146 5	SCREW		1	1)
3	60 0502 625 8	SCREW	12 X 1,75 -37 - M12X40	8	2)
4	60 0502 146 6	SCREW		1	3)
5	60 0502 777 3	SCREW	M16X60	2	
6	77 0005 577 1	GASKET		1	
7	60 0501 279 0	SHAFT SEAL	118X146X15	1	4)
8	60 0501 604 9	O-RING		1	
9	60 0501 278 6	BLANKING COVER		1	

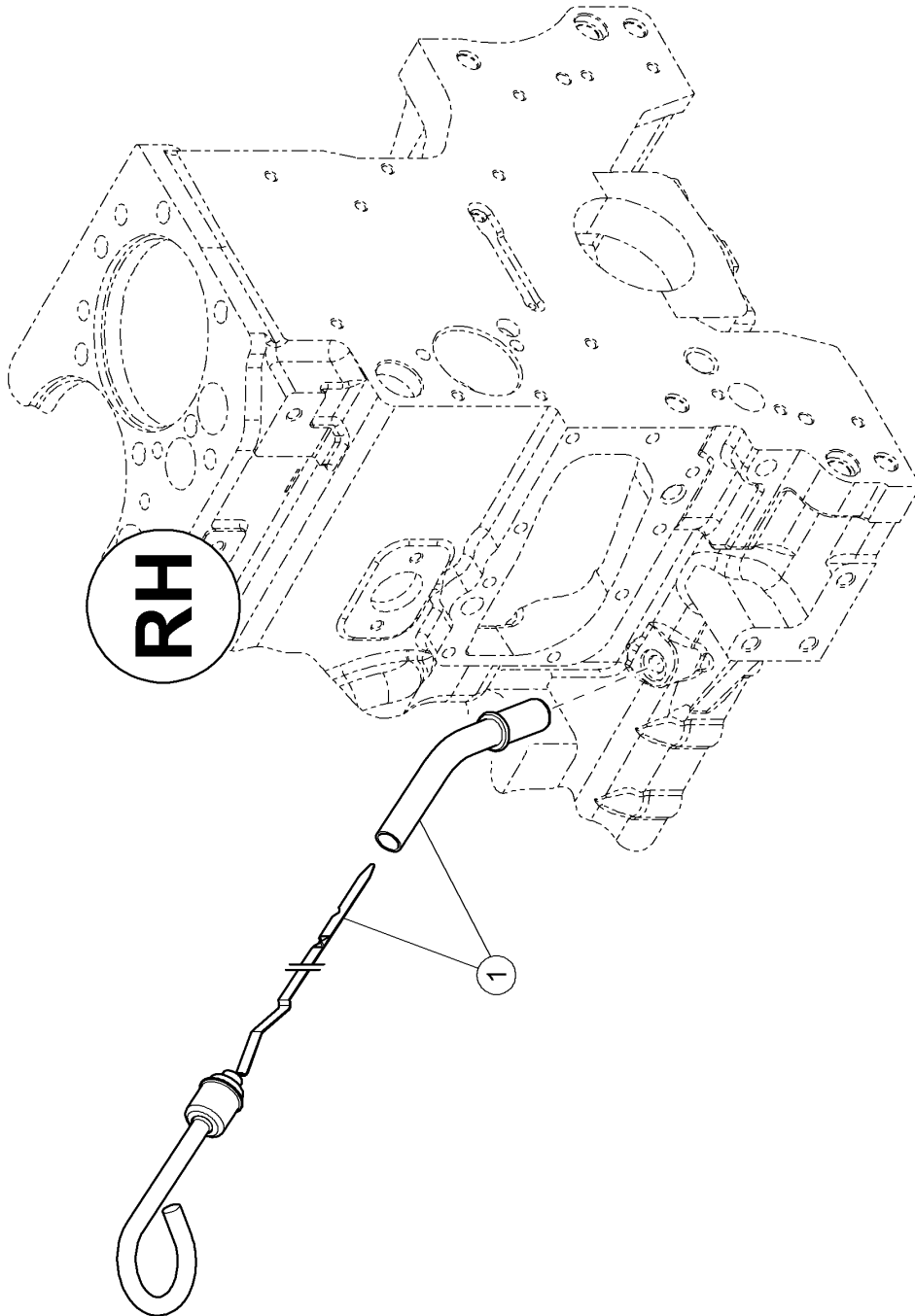
1)	Remarks	M20X250-80
2)	Remarks	M12X175-38
3)	Remarks	M20X250-110
4)	Remarks	118X146X15



160 OIL PAN

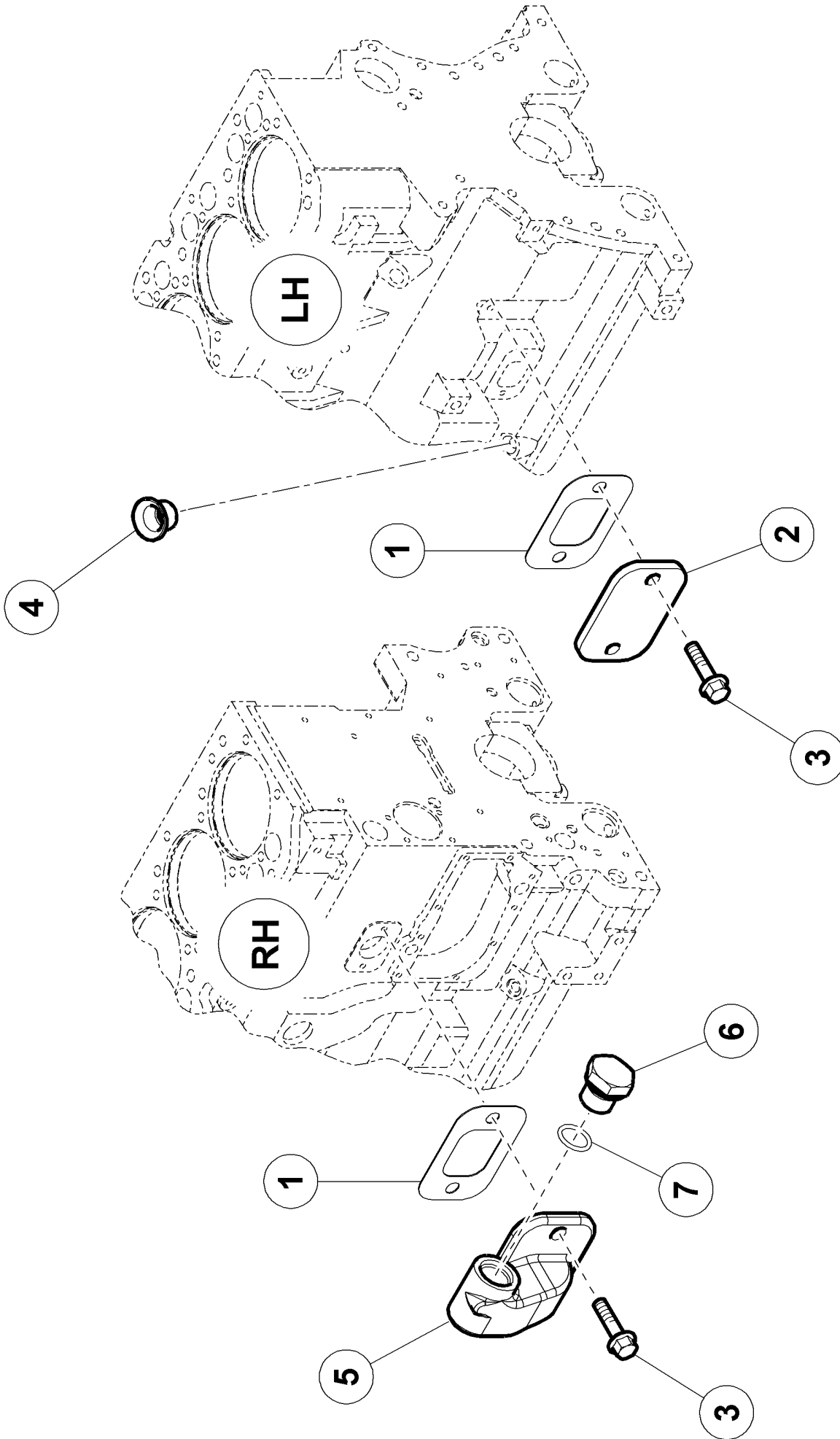
Pos.	Part No.	Description	Dimension	Quantity	Conditions
1	60 0502 666 5	OIL SUMP		1	
2	60 0502 666 6	GASKET		1	
3	00 1135 253 0	PLUG		1	
4	00 1135 255 0	SEALING RING		1	
5	00 1135 256 0	TUBE		1	1)
6	60 0502 145 6	SCREW	M8X25	2	
7	00 1117 366 1	TUBE		1	2)
8	00 1132 240 0	PLUG		1	
9	60 0501 211 0	GASKET		1	
10	77 0101 759 2	SCREW	M08X35 VERBUS RIPP	6	3)
11	77 0001 434 0	SCREW	M10X35 - VERBUS RIPP	24	4)
12	60 0502 147 1	SCREW		2	5)
13	77 0102 451 6	SCREW		2	6)
14	77 0310 108 5	HEXAGON HEAD BOLT	M10X140-32	2	7)
15	77 0305 501 3	WASHER	10	6	

1) Equipment	TD_201_0000	Without pre-equipment for front loader
2) Equipment	TD_201_0001 TD_201_0002 TD_201_0003	Prolongateurs d'ailes AR courts Pre-equipement for PROPILOT front loader FLEXPILOT Front loader pre-equipment (requires 213 0001 and loader jib)
3) Remarks		HM 8 X 1,25 - 35 mm
4) Remarks		HM 10 X 1,50 - 35 mm
5) Remarks		HM 10 X 1,50 - 120 mm
6) Remarks		HM 10 X 1,50 - 175 mm
7) Remarks		HM 10 X 1,50 - 140 mm



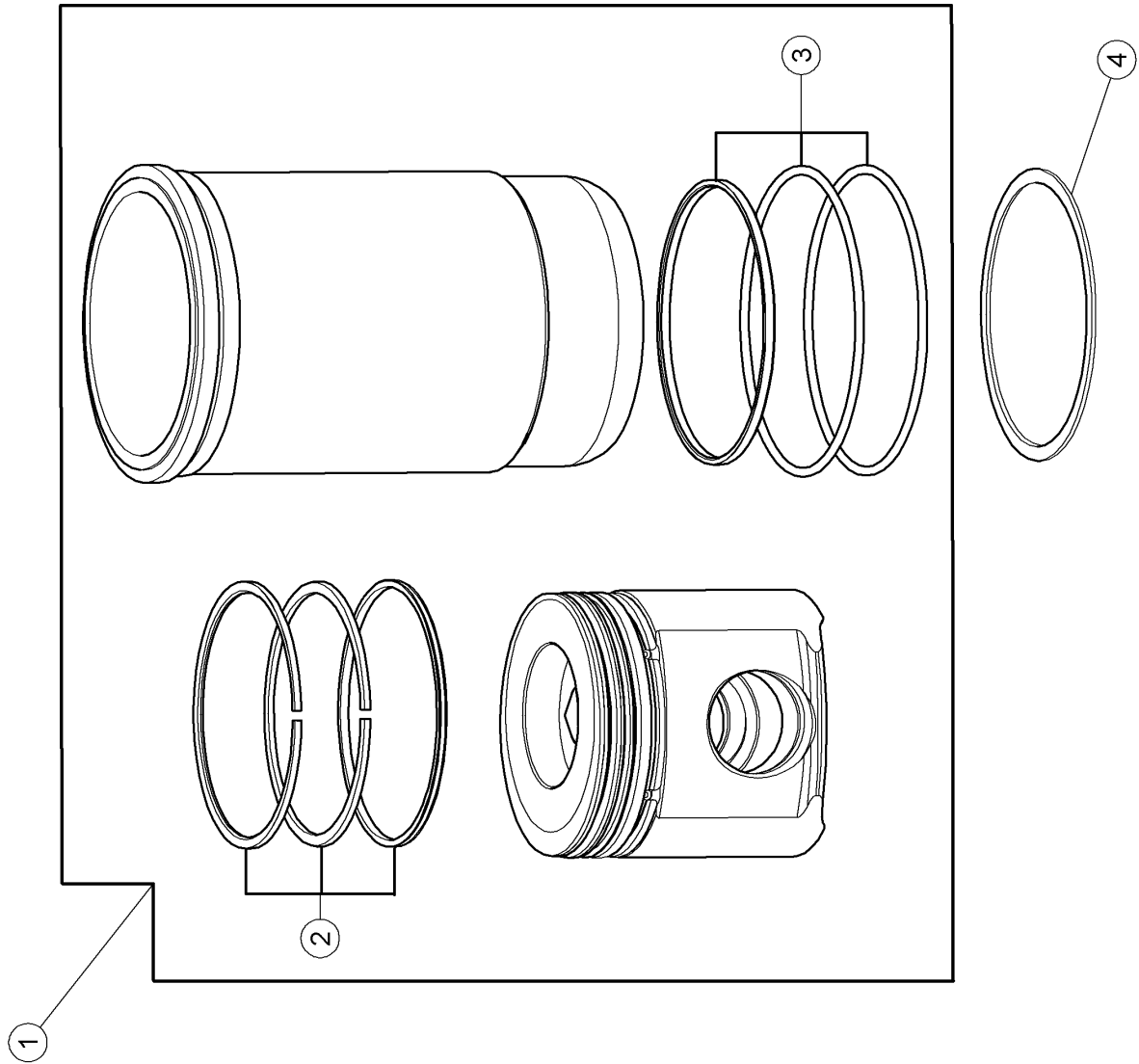
160 OIL PAN

Pos.	Part No.	Description	Dimension	Quantity	Conditions
1	00 1147 501 0	GAUGE		1	



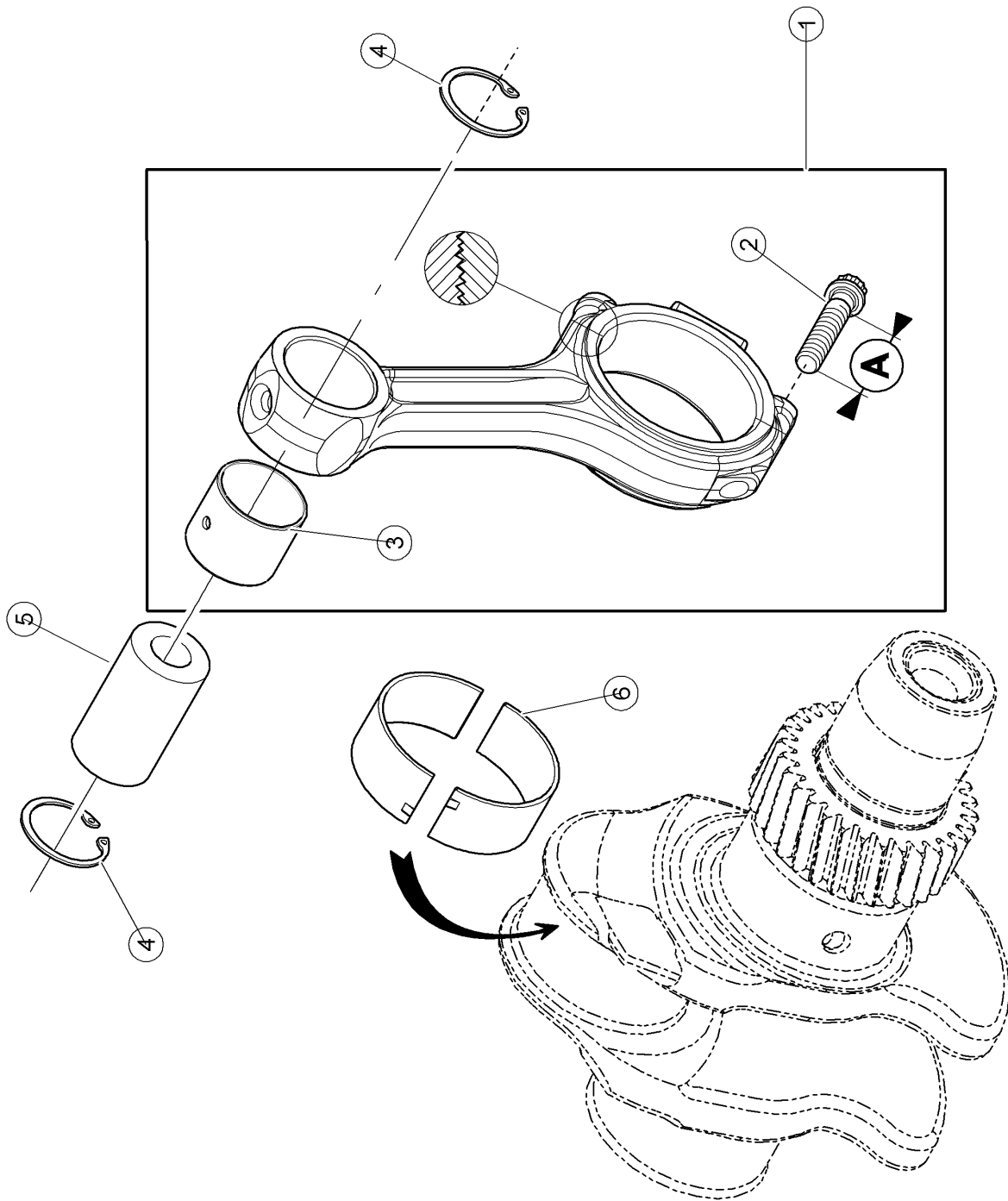
180 PLUGS

Pos.	Part No.	Description	Dimension	Quantity	Conditions
1	60 0502 470 4	GASKET		2	
2	60 0502 470 2	PLATE		1	
3	60 0502 149 8	SCREW	M8X20	4	
4	60 0502 662 4	PLUG		1	
5	00 1135 000 0	MANIFOLD		1	
6	60 0502 160 7	PLUG	F-M18X1,5 ERS.D.7700054	1	
7	60 0502 160 8	O-RING	15,3X2,2-N	1	



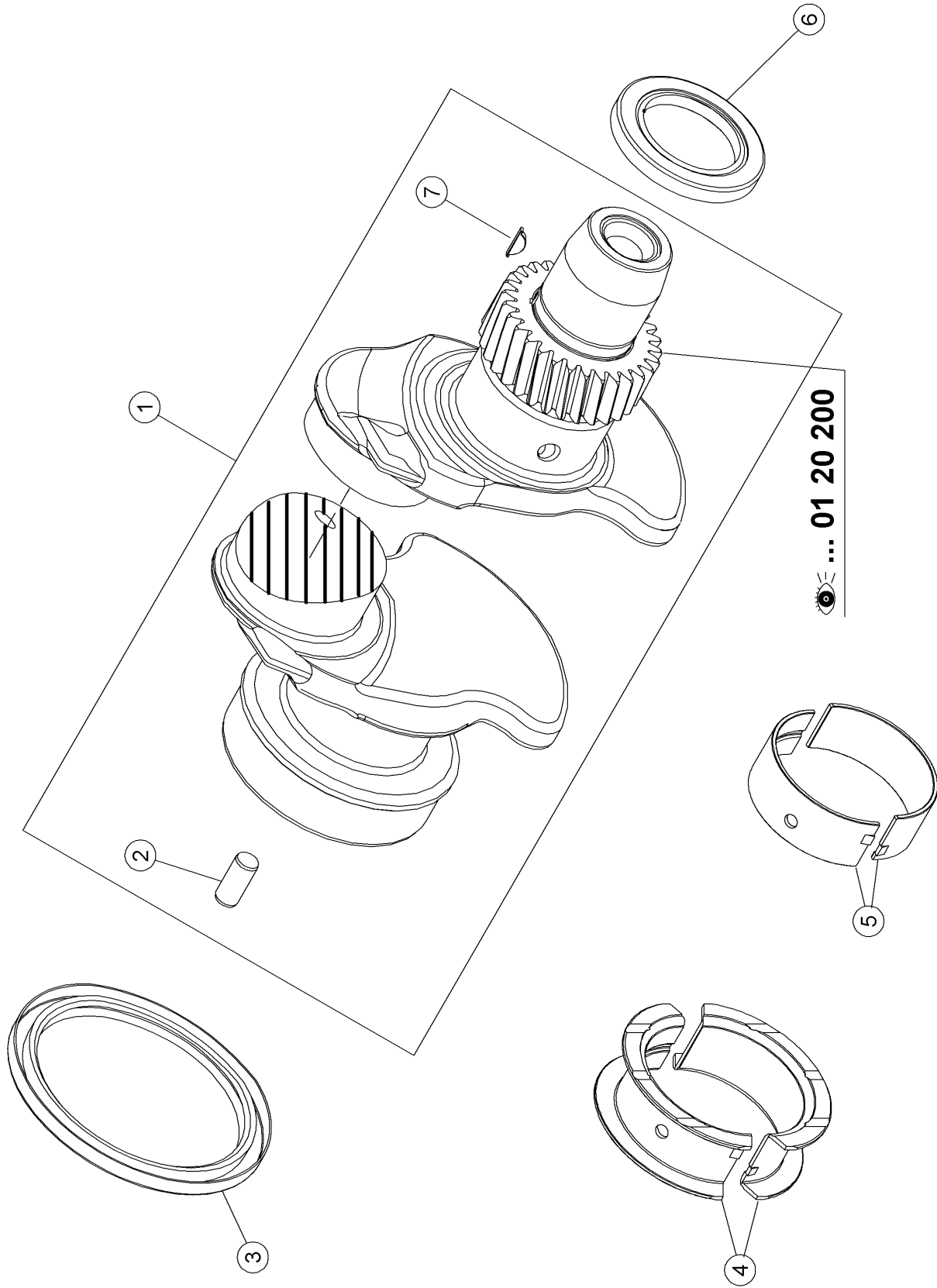
100 CYLINDER LINER, PISTON

Pos.	Part No.	Description	Dimension	Quantity	Conditions
1	00 1167 320 0	PISTON-LINER		6	
2	60 0502 869 5	SET OF PISTON RINGS		6	
3	60 0501 280 9	SEALING RING SET		6	
4	60 0501 281 5	ADJUSTING DISC		6	1)
4	60 0501 281 6	ADJUSTING DISC		6	2)
1)	Remarks		[SR] EP.0.05MM		
2)	Remarks		[SR] EP.0.10MM		



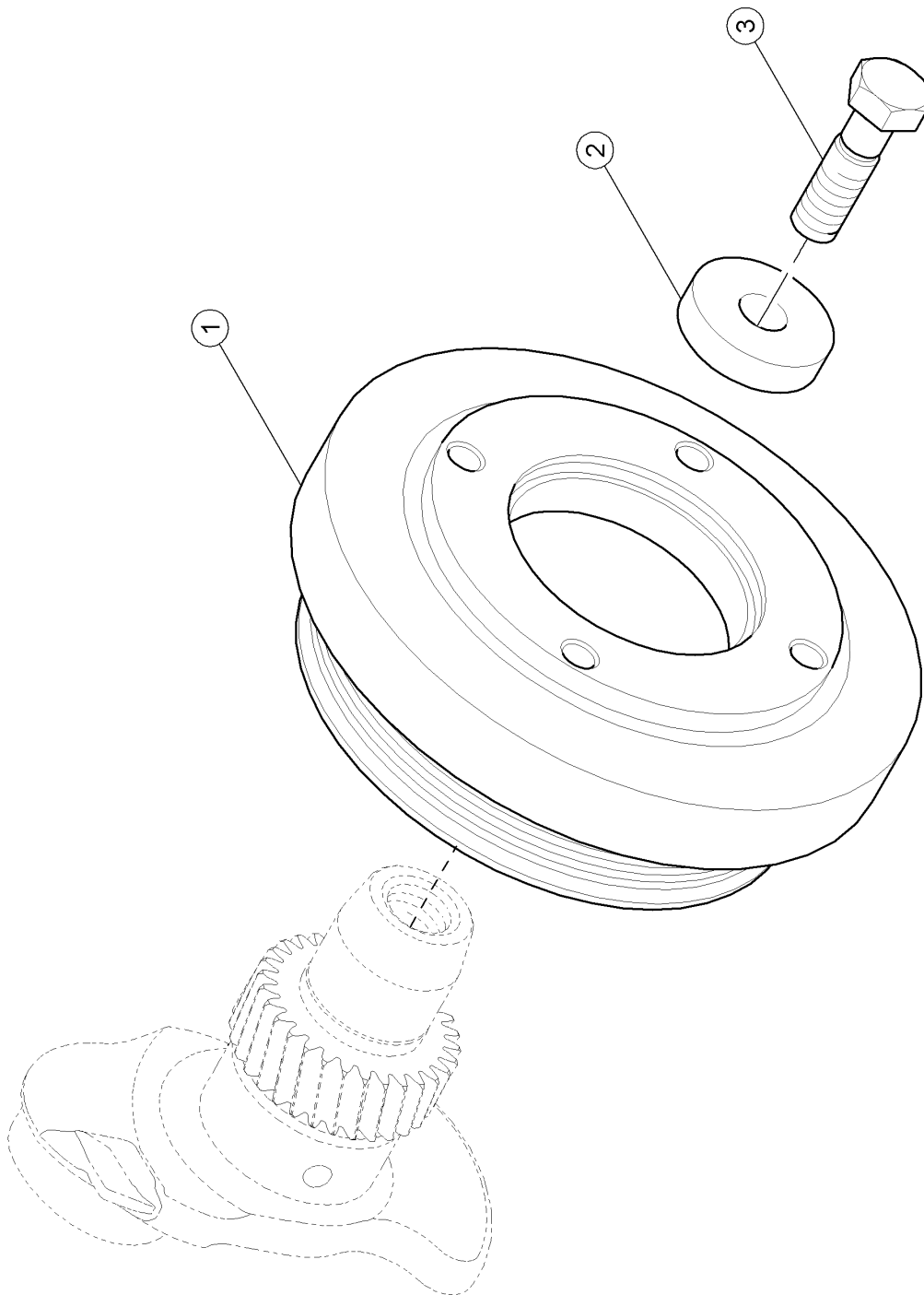
120 CONNECTING ROD, CONNECTING ROD BEARINGS

Pos.	Part No.	Description	Dimension	Quantity	Conditions
1	60 0502 453 6	CONNECTING ROD		6	
2	60 0502 453 7	SCREW	12 PTS M12 X 1,25 - 61	12	1)
3	60 0502 147 6	RING		6	
4	60 0501 281 4	INNER CIRCLIP		12	
5	00 1132 482 0	AXLE		6	
6	60 0502 147 8	BEARING		6	
6	60 0502 147 9	BEARING		6	2)
1)	Remarks		M 12 X 1,25 - 61 mm		
2)	Remarks		-0.254MM		



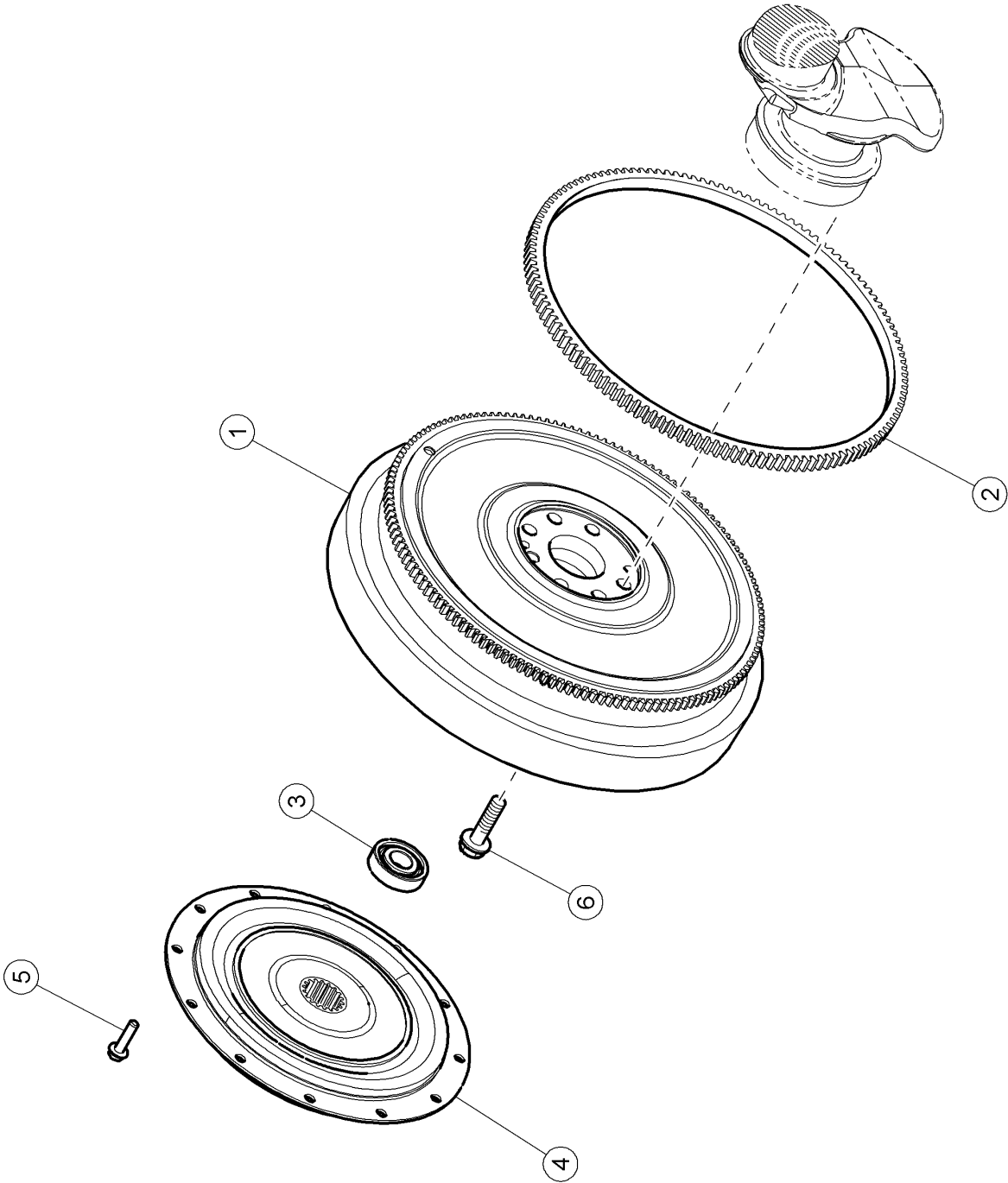
140 CRANKSHAFT

Pos.	Part No.	Description	Dimension	Quantity	Conditions
1	60 0502 869 6	CRANKSHAFT		1	
2	60 0501 317 4	CENTRING PIN		1	
3	60 0501 279 0	SHAFT SEAL	118X146X15	1	
4	60 0502 148 1	BEARING		1	
4	60 0502 148 2	BEARING		1	1)
5	60 0502 148 3	BEARING		6	
5	60 0502 148 4	BEARING		6	1)
6	00 1141 365 0	SEAL RING		1	
7	60 0502 869 7	KEY		1	
1)	Remarks				-0.254MM



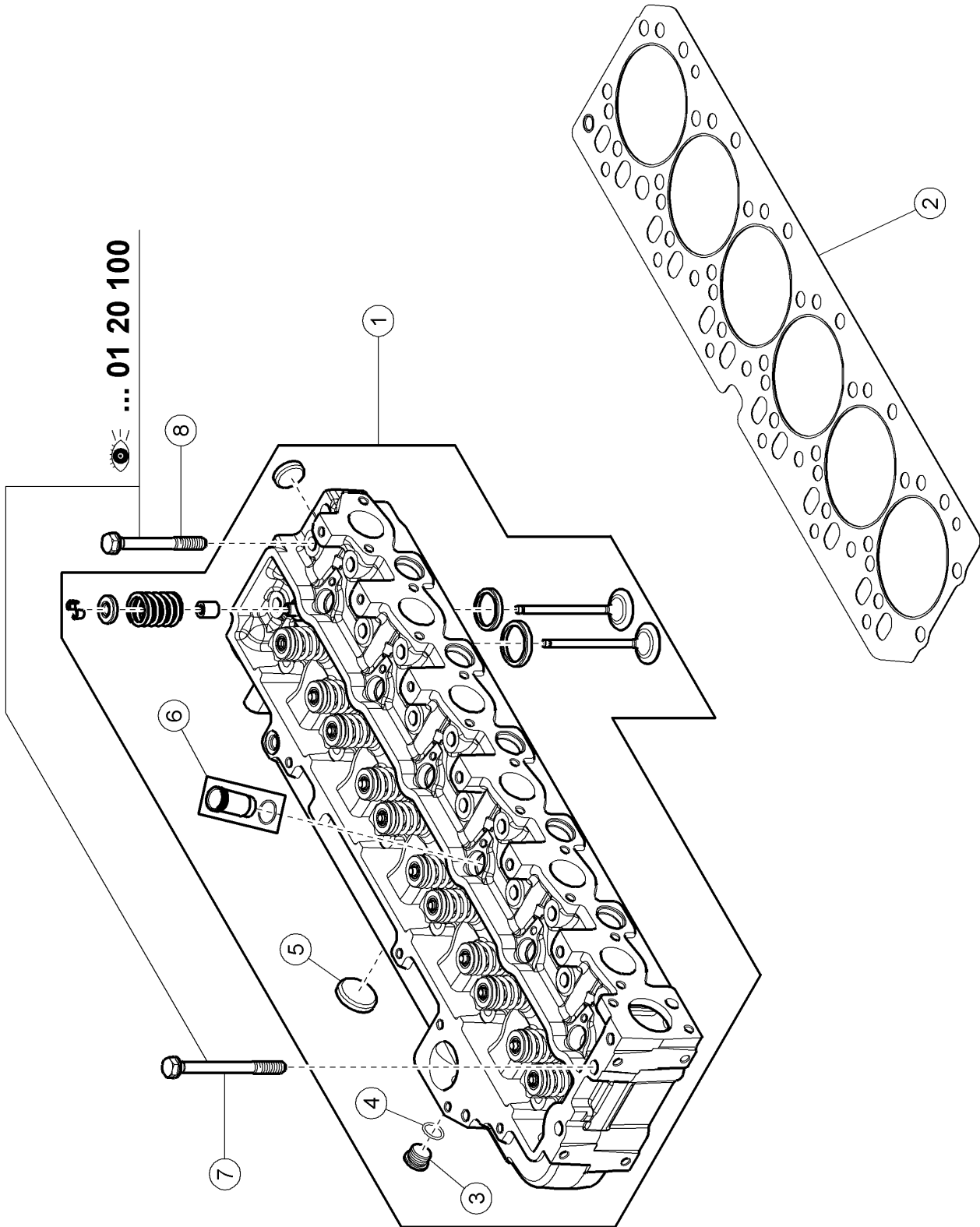
160 CRANKSHAFT PULLEY WHEEL

Pos.	Part No.	Description	Dimension	Quantity	Conditions
1	77 0006 623 2	ANTI-VIBRATION WHEEL		1	
2	60 0503 045 1	SPACER		1	
3	60 0502 866 8	SCREW	M20X70	1	



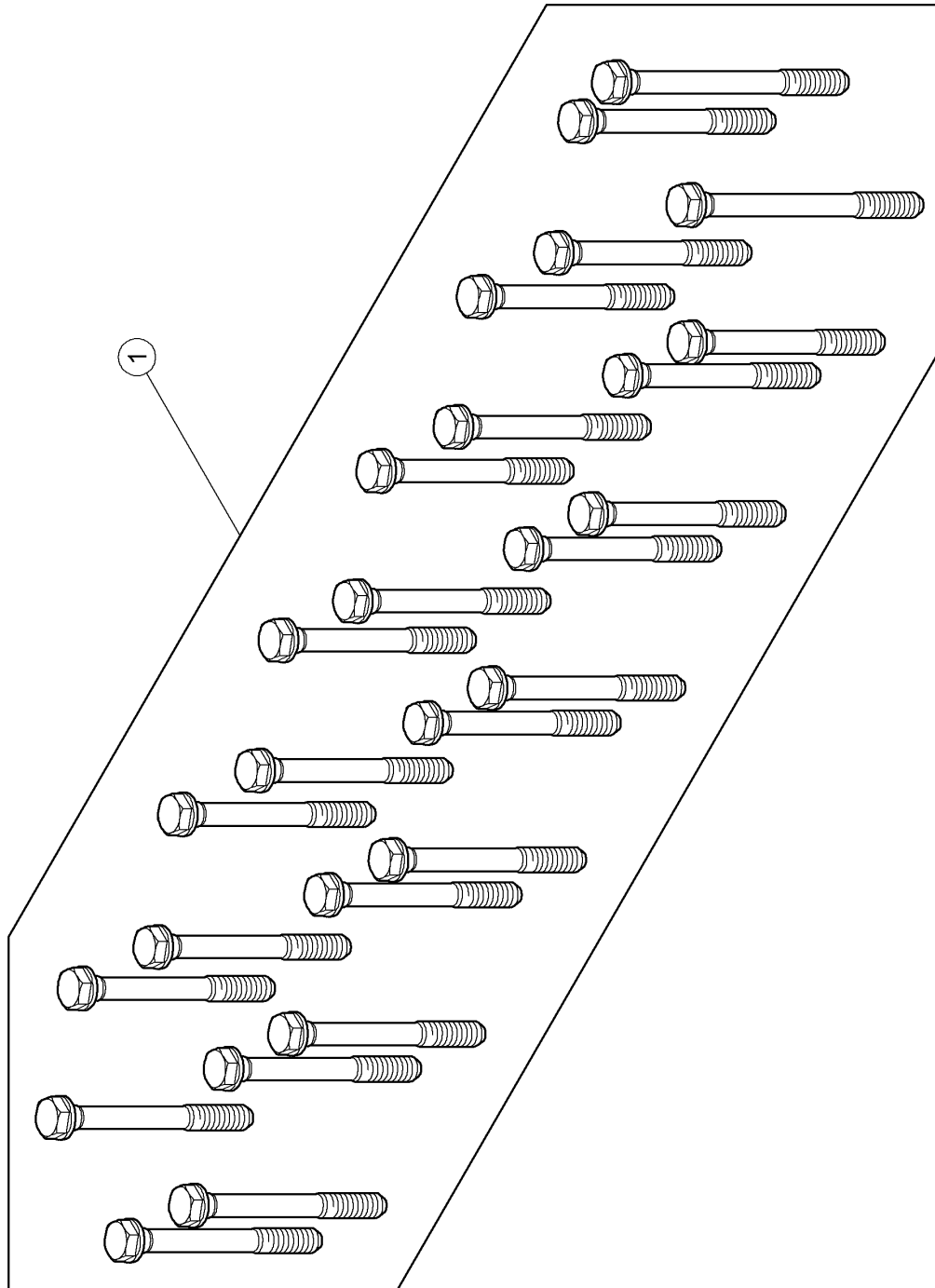
220 FLYWHEEL

Pos.	Part No.	Description	Dimension	Quantity	Conditions
1	77 0007 132 9	FLYWHEEL		1	
2	77 0004 728 5	TOOTHED RIM		1	
3	00 0238 373 0	GRVD.BALL BEARING	6305-2RS*	1	
4	00 1111 394 0	HUB		1	
5	77 0005 997 8	HEXAGON HEAD BOLT	M10X40	8	1)
6	60 0502 625 8	SCREW	12 X 1,75 -37 - M12X40	6	2)
1)	Remarks		M10X150-40		
2)	Remarks		M12X175-38		



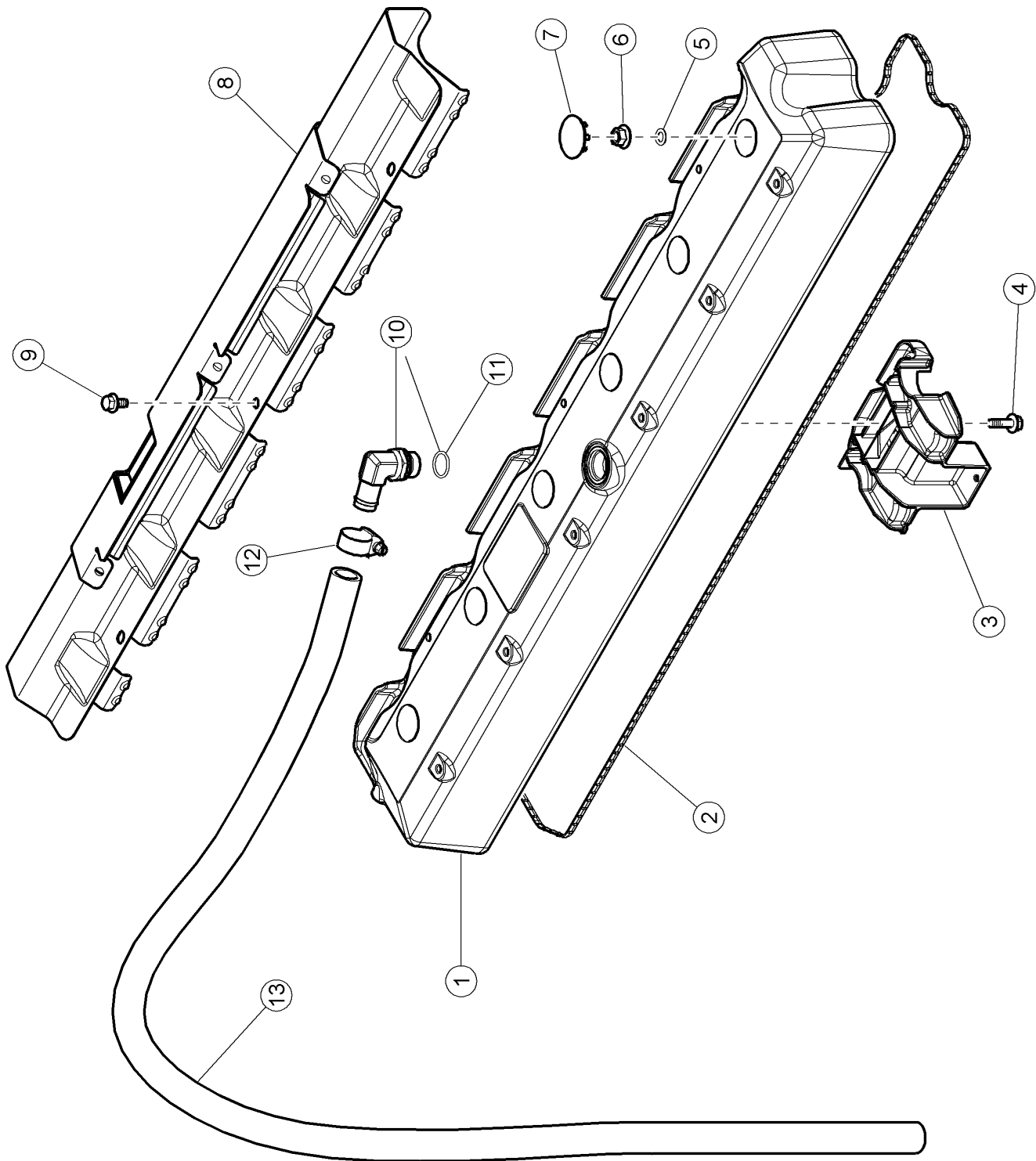
100 CYLINDER HEAD

Pos.	Part No.	Description	Dimension	Quantity	Conditions
1	00 1135 547 0	CYLINDER HEAD		1	
2	00 1146 047 1	CYLINDER HEAD GASKET	94*32*3	1	
3	60 0501 591 9	PLUG		1	
4	00 1135 548 0	O-RING		1	
5	60 0502 149 2	PLUG		3	
6	00 1135 549 0	SLEEVE		6	
7	00 1145 541 0	SCREW	1/2-13UNC-2AX5 1/3	2	1)
8	60 0501 288 6	SCREW		24	2)
1)	Remarks	Dia 12,50X1,953 -137mm			
2)	Remarks	Dia 12,50X1,953 -111mm			



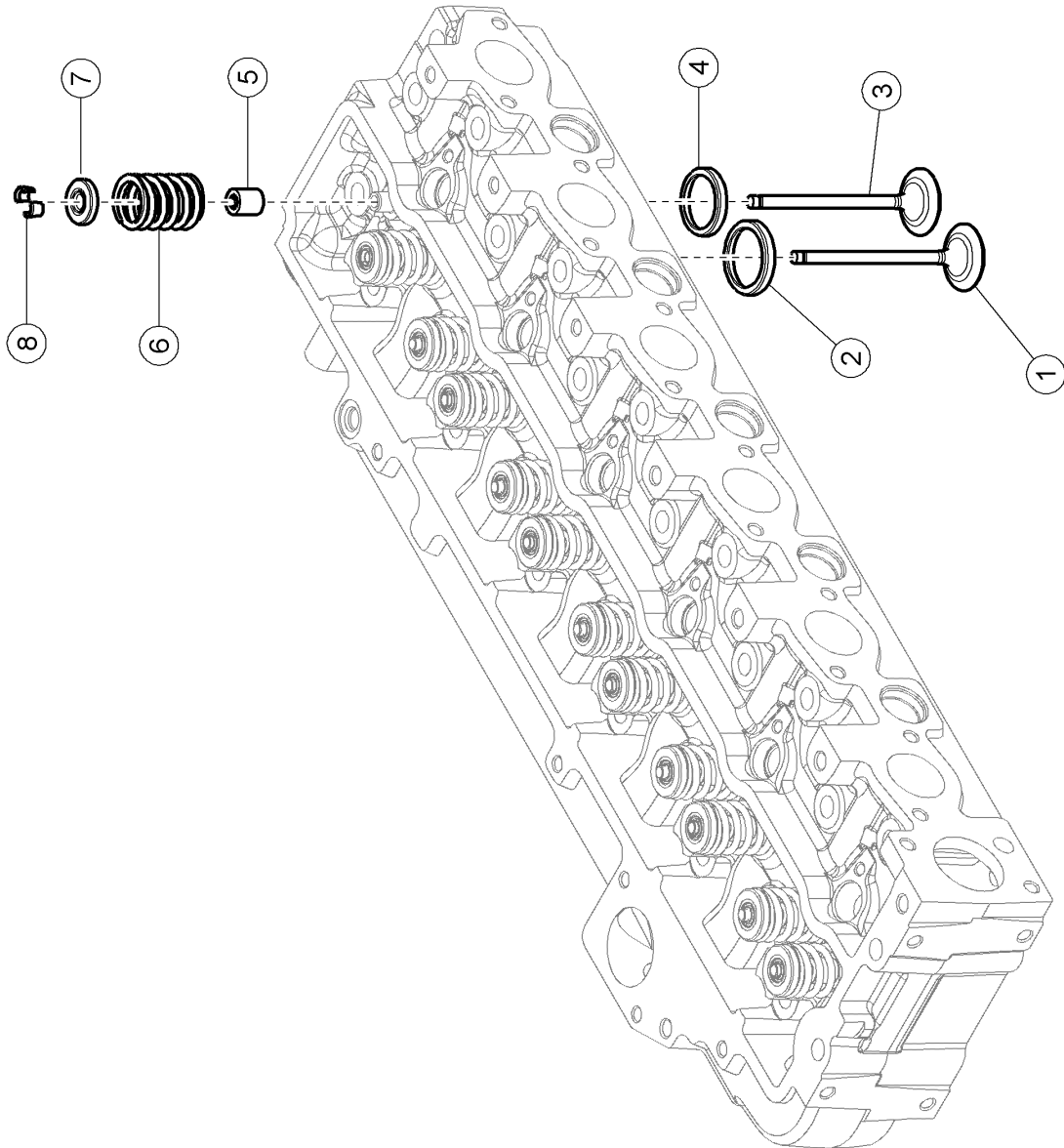
100 CYLINDER HEAD

Pos.	Part No.	Description	Dimension	Quantity	Conditions
1	00 1148 014 0	BOLT KIT		1	



120 CYLINDER HEAD COVER

Pos.	Part No.	Description	Dimension	Quantity	Conditions
1	00 1133 937 0	ROCKER COVER		1	
2	00 1135 551 0	SEALING RING		1	
3	00 1135 552 0	DEFLECTOR		1	
4	00 0237 466 0	HEXAGON HEAD BOLT	M06X20	2	
5	00 0219 147 0	O-RING	7,59X2,62-N	7	
6	60 0502 149 4	FLANGE NUT		7	
7	60 0502 134 4	PLUG		7	
8	00 1135 553 0	HEAT SHIELD		1	
9	60 0502 163 2	SCREW	M6X12	1	
10	00 1133 935 0	ELBOW		1	
11	60 0502 160 4	O-RING	19X2.4	1	
12	60 0500 348 9	CLAMP	A 020-32X12 W1	1	
13	60 0503 048 0	HOSE		1	





Suggest:

For more complete manuals. Please go to the home page.

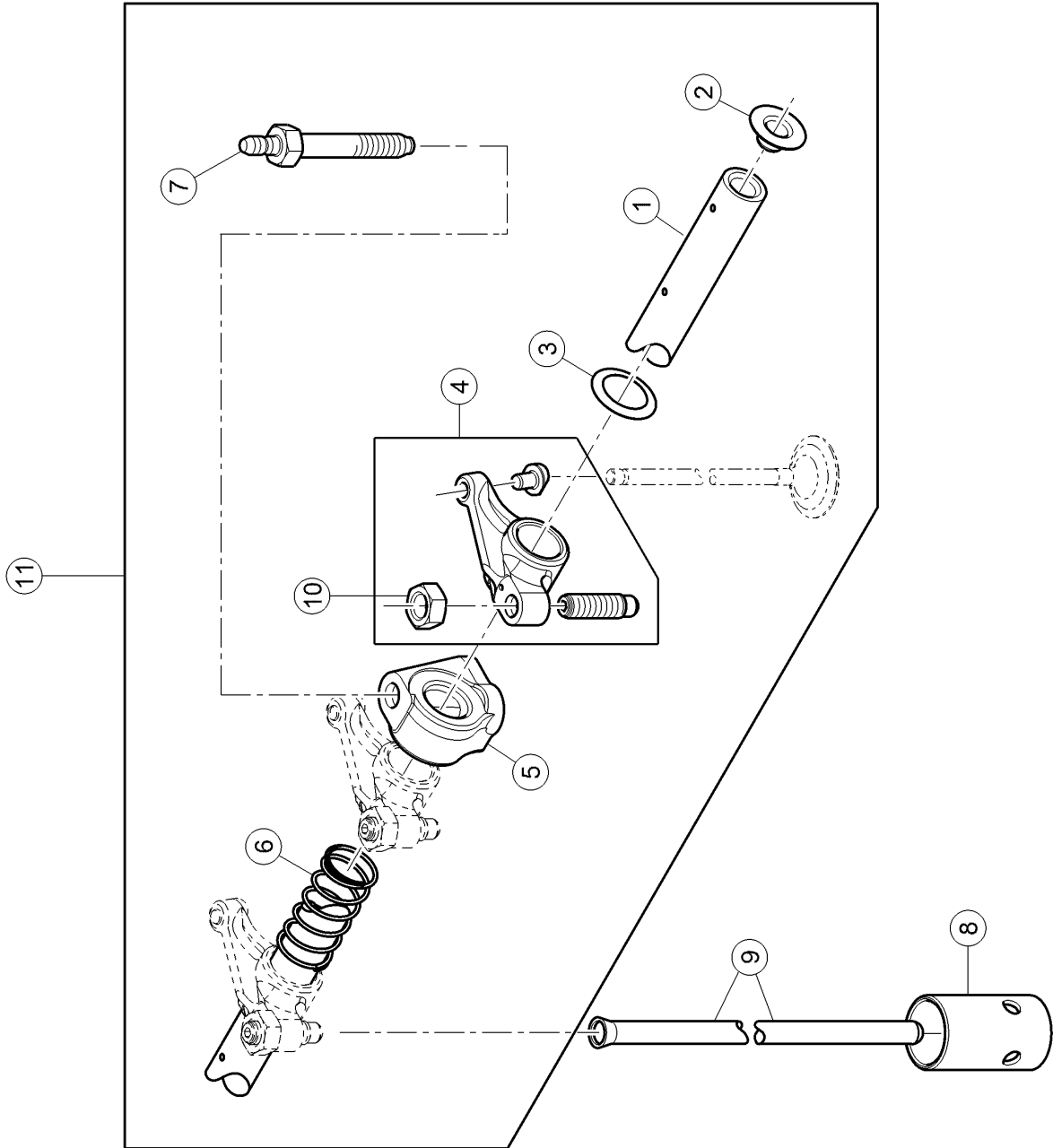
<https://www.ebooklibonline.com>

If the above button click is invalid. Please download this document first, and then click the above link to download the complete manual.

Thank you so much for reading

140 VALVES

Pos.	Part No.	Description	Dimension	Quantity	Conditions
1	60 0501 291 6	ENGINE VALVE		6	
2	60 0501 291 8	VALVE SEAT		6	
3	60 0501 290 8	ENGINE VALVE		6	
4	60 0501 291 0	VALVE SEAT		6	
5	60 0501 291 1	SEALING RING		12	
6	60 0501 291 3	SPRING		6	
7	60 0501 291 4	RETAINER		12	
8	60 0501 291 5	HALF-CONE		24	



160 ROCKER ARM

Pos.	Part No.	Description	Dimension	Quantity	Conditions
1	60 0502 150 3	SHAFT		1	
2	60 0501 292 9	LOCK		2	
3	60 0501 293 0	WASHER		1	
4	60 0502 998 8	ROCKER ARM		12	
5	60 0502 150 5	SUPPORT		6	
6	60 0501 293 4	SPRING		5	
7	60 0502 150 6	STUD BOLT		6	
8	60 0502 150 7	PUSHROD		12	
9	60 0502 150 8	ROD		12	
10	77 0303 212 4	NUT	M 10	12	
11	00 1153 411 0	DRIVE SHAFT		1	

<https://www.ebooklibonline.com>

Hello dear friend!

Thank you very much for reading.

Enter the link into your browser.

The full manual is available for immediate download.

<https://www.ebooklibonline.com>