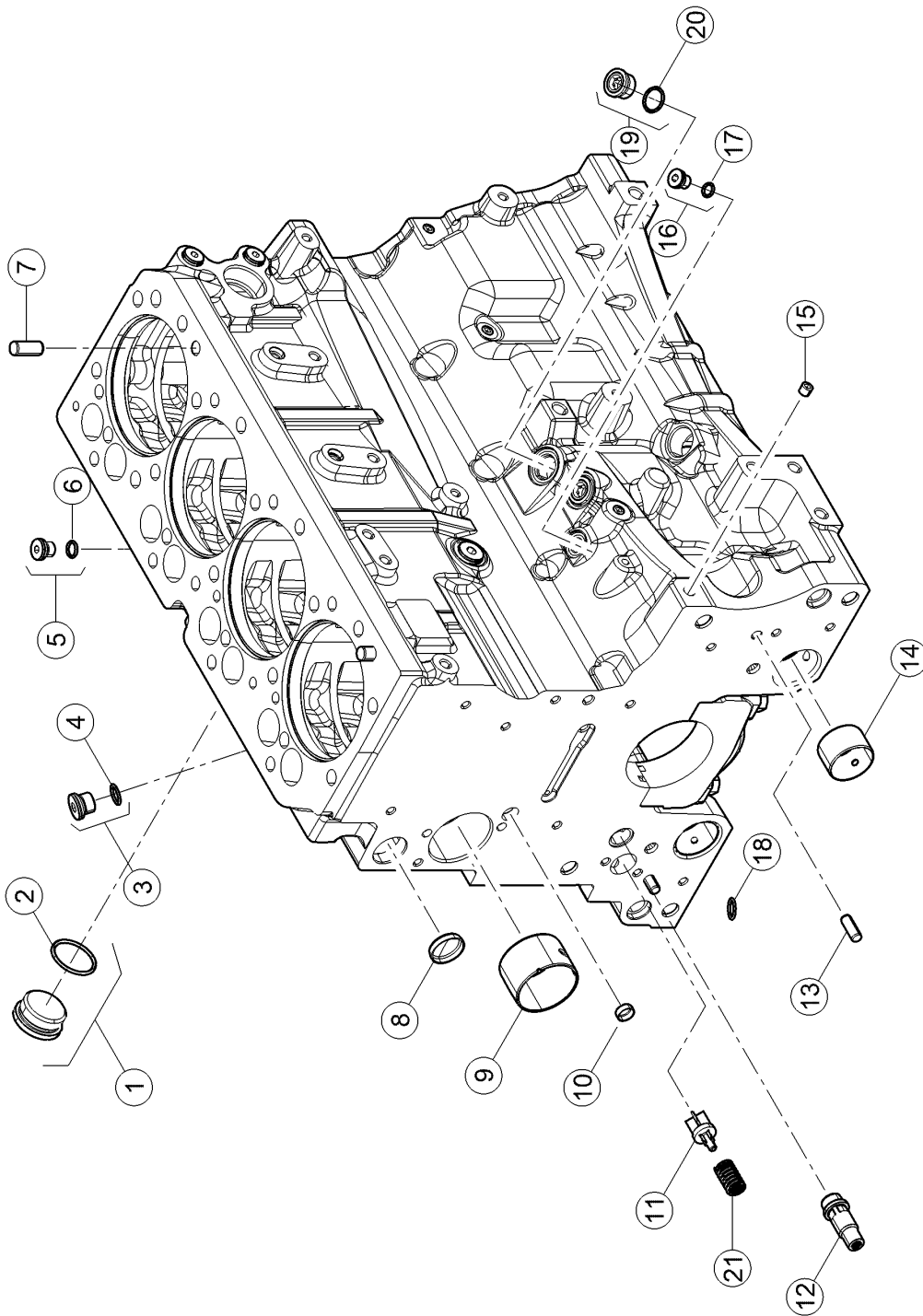


010 COMPLETE ENGINE

Pos.	Part No.	Description	Dimension	Quantity	Conditions
1	00 1169 916 0	ENGINE		1	



<https://www.ebooklibonline.com>

Hello dear friend!

Thank you very much for reading.

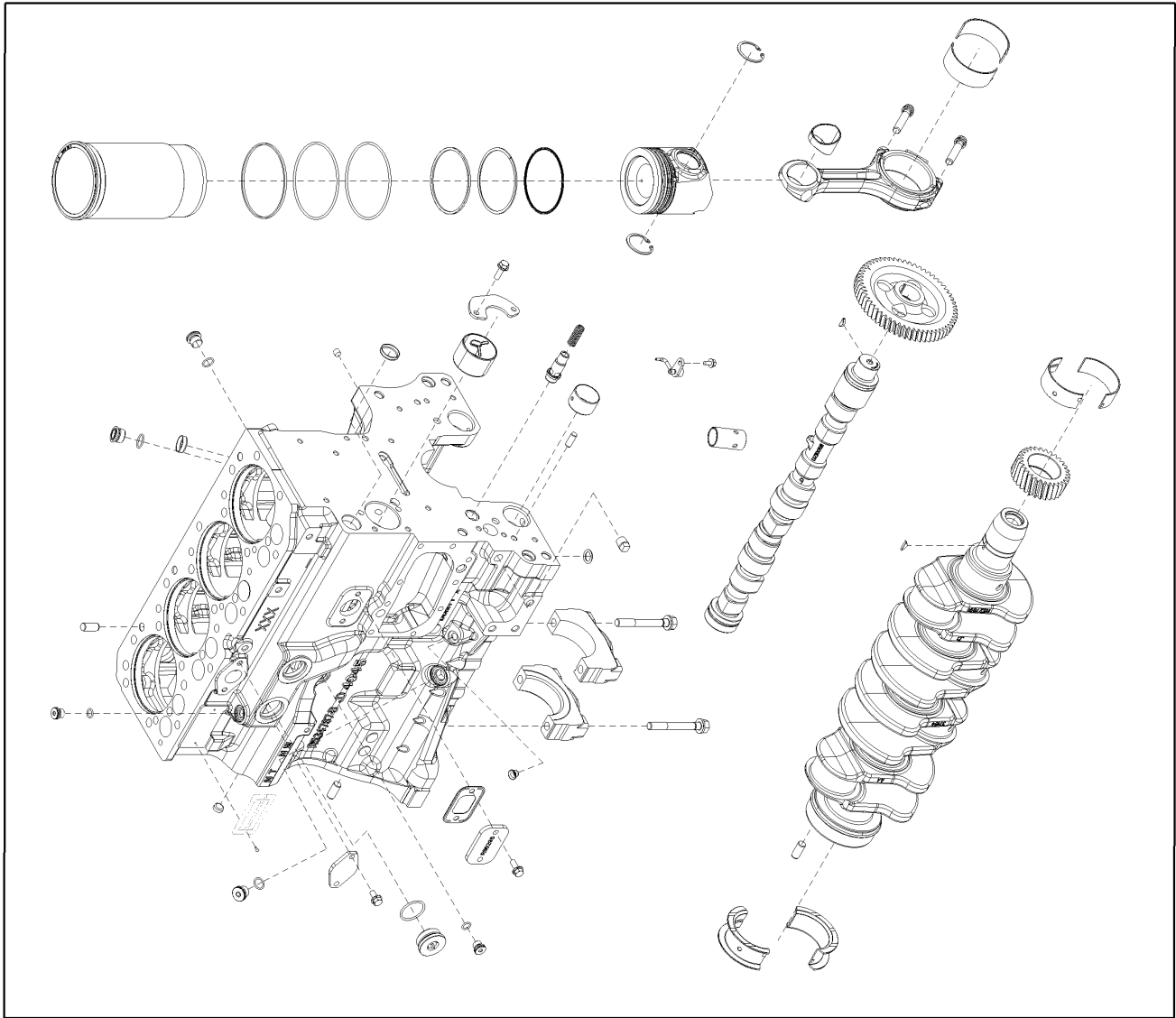
Enter the link into your browser.

The full manual is available for immediate download.

<https://www.ebooklibonline.com>

100 CRANKCASE

Pos.	Part No.	Description	Dimension	Quantity	Conditions
1	60 0502 905 2	PLUG		2	
2	60 0501 938 3	O-RING		2	
3	00 1145 876 0	PLUG		2	
4	60 0502 160 8	O-RING	15,3X2,2-N	2	
5	00 1145 880 0	PLUG		4	
6	60 0502 164 1	O-RING		4	
7	60 0501 317 4	CENTRING PIN		4	
8	60 0502 143 9	BLANKING COVER		1	
9	60 0501 294 1	BEARING		2	
10	60 0501 319 8	BLANKING COVER		2	
11	00 1145 875 0	VALVE		1	
12	60 0502 869 1	VALVE		1	
13	60 0501 319 6	CENTRING PIN		2	
14	60 0502 593 1	RING		2	
15	00 1141 206 0	PLUG		5	
16	00 1161 401 0	PLUG		1	
17	60 0502 156 7	O-RING	9,3X2,2	1	
18	60 0501 320 3	O-RING		1	
19	00 1145 914 0	BLANKING COVER		2	
20	60 0502 160 4	O-RING	19X2,4	2	
21	60 0501 320 1	SPRING		1	



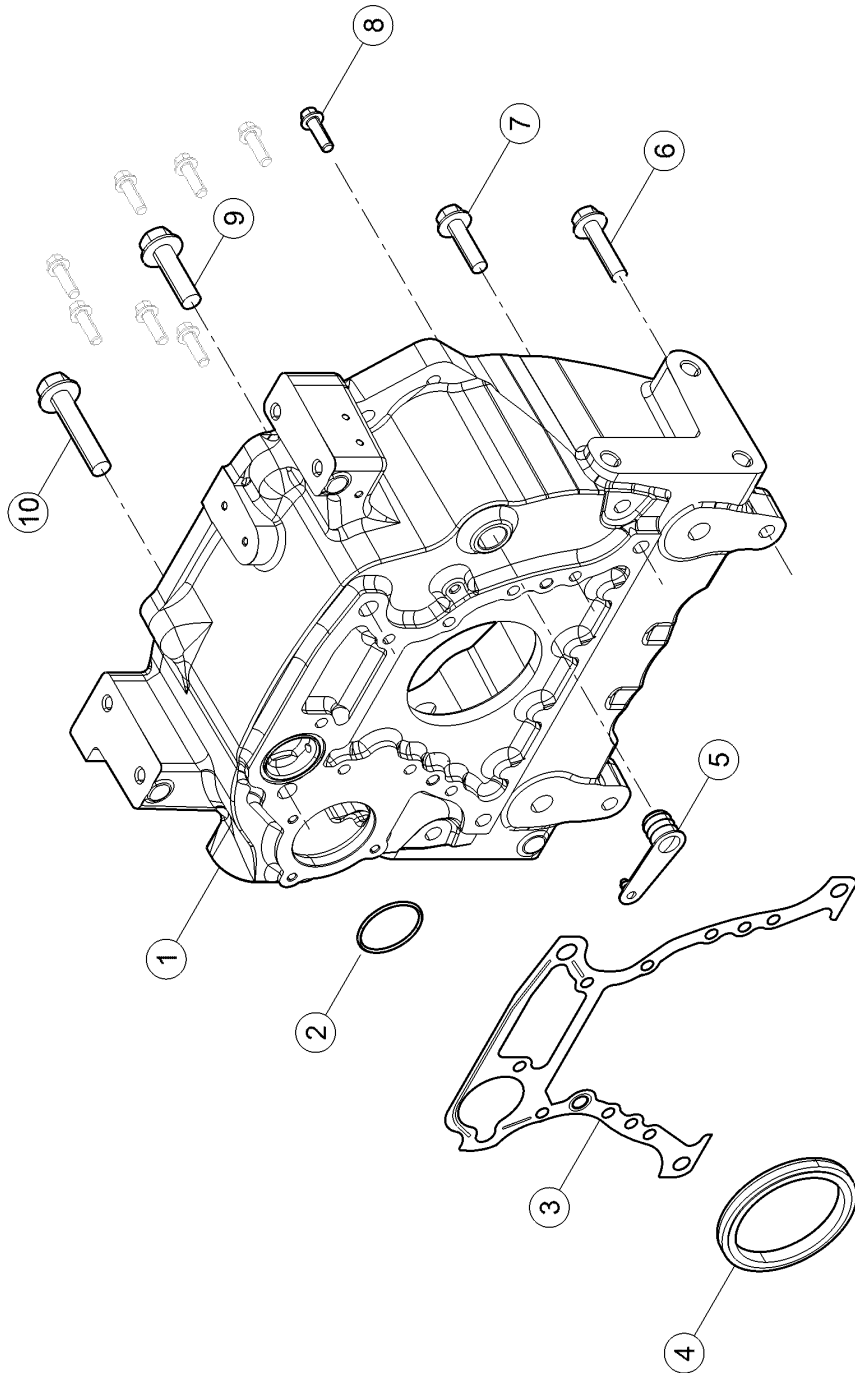
1

100 CRANKCASE

Pos.	Part No.	Description	Dimension	Quantity	Conditions
1	00 1171 784 0	SHORT BLOCK		1	

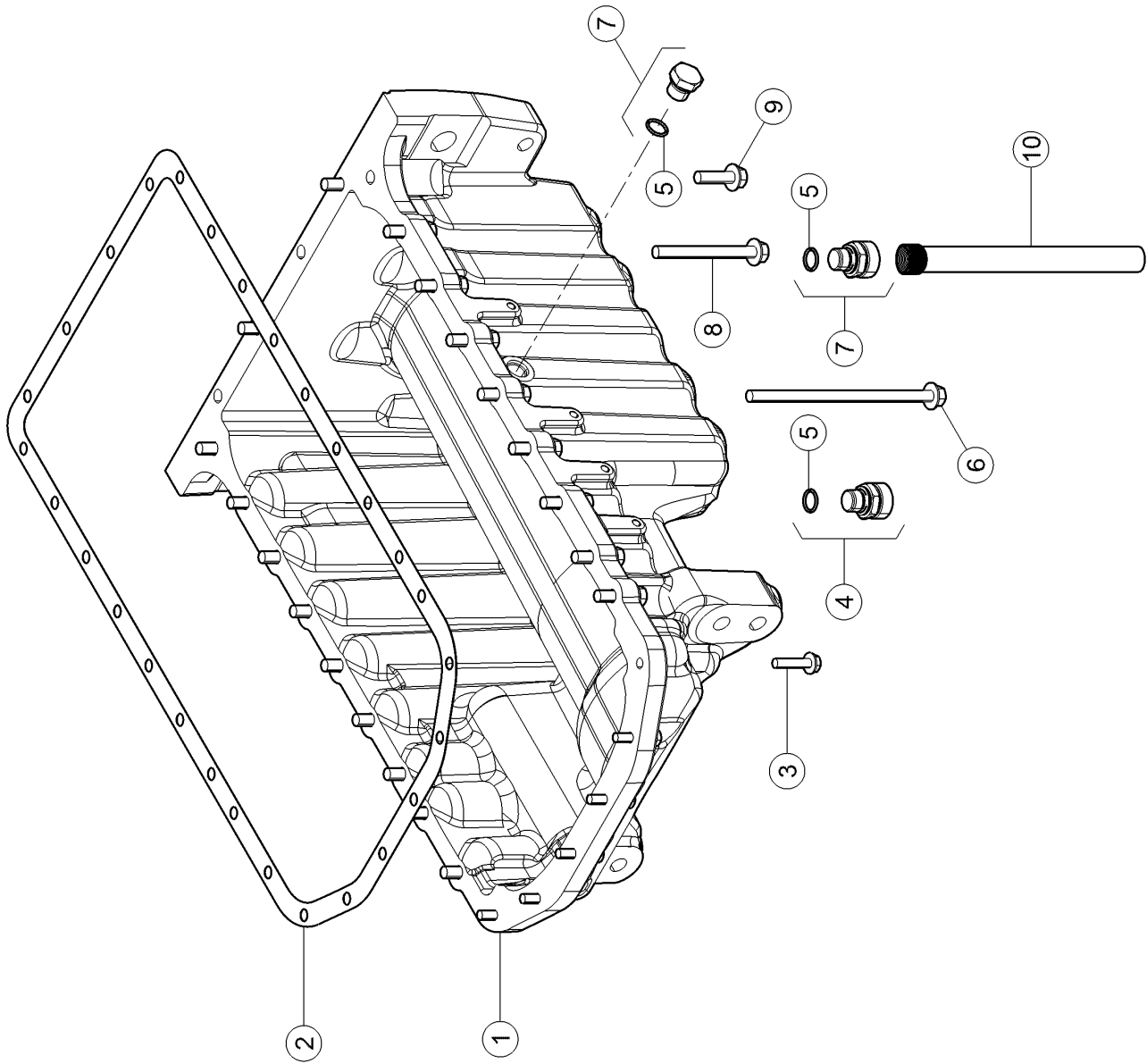
120 TIMING CASE

Pos.	Part No.	Description	Dimension	Quantity	Conditions
1	00 1162 415 0	CASING		1	
2	60 0502 895 5	SCREW PLUG	F-M20X1,5	1	
3	60 0501 365 5	O-RING	17,3X2,2	1	
4	60 0502 145 0	SCREW	M08X60	4	
5	00 1169 885 0	GASKET		1	
6	60 0502 160 3	LOCK	M22X1,5	1	
7	60 0502 160 4	O-RING	19X2.4	1	
8	60 0502 144 9	NUT		9	
9	60 0502 593 6	SCREW	M8X50	4	
10	60 0500 796 4	O-RING	37,69 X 3,53 NBR 80	1	
11	00 1162 416 0	FLAT SEAL		1	
12	60 0502 145 6	SCREW	M8X25	1	
13	60 0502 144 9	NUT		9	
14	60 0502 339 8	STUD BOLT		2	
15	60 0502 339 7	SCREW		5	
16	00 1132 473 0	STUD BOLT		7	
17	00 1170 801 0	PANEL		1	



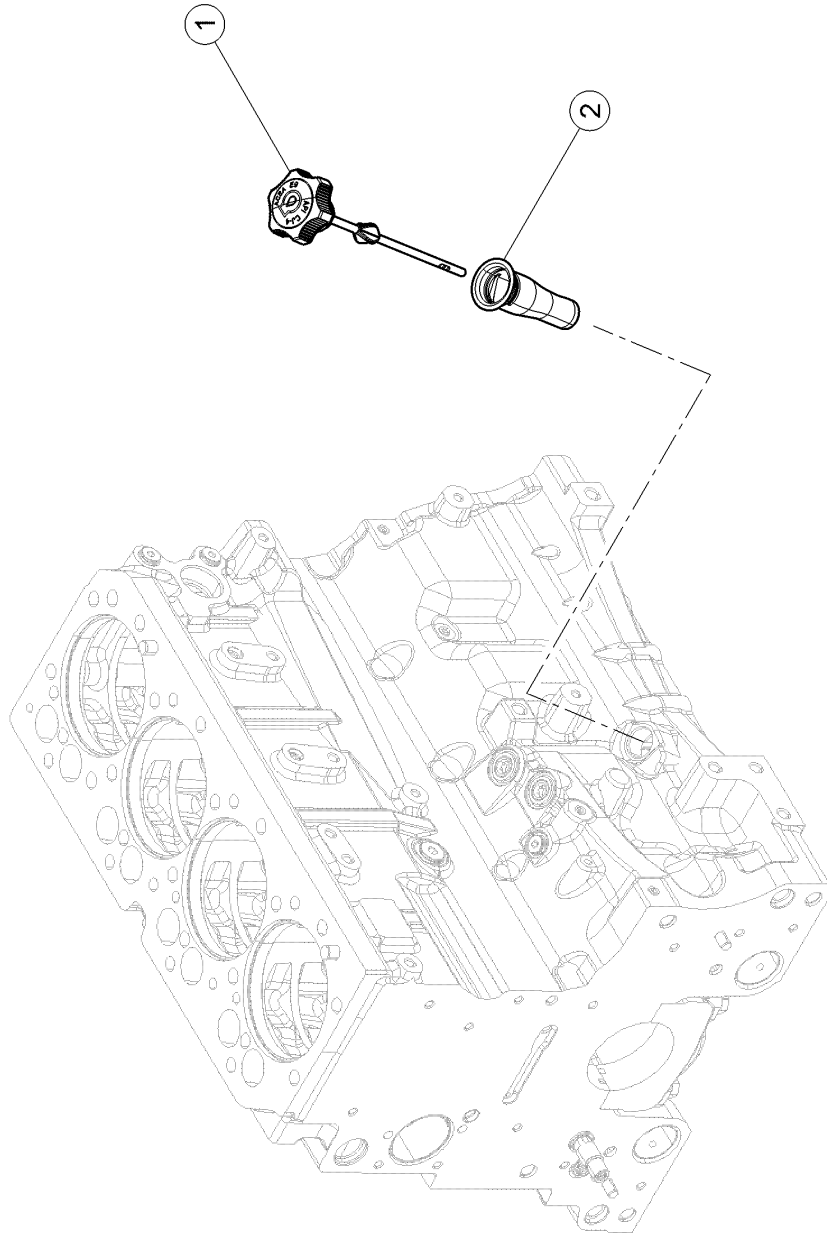
140 FLYWHEEL HOUSING

Pos.	Part No.	Description	Dimension	Quantity	Conditions
1	00 1161 402 0	CASING		1	
2	60 0501 604 9	O-RING		1	
3	77 0005 577 1	GASKET		1	
4	00 1169 730 0	LIP SEAL		1	
5	60 0501 611 6	BLANKING COVER		1	
6	60 0502 777 3	SCREW	M16X60	2	
7	60 0502 146 8	SCREW		2	
8	60 0502 625 8	SCREW	12 X 1,75 -37 - M12X40	8	
9	00 1132 476 0	SCREW		1	
10	00 1132 477 0	SCREW	M20X100	1	



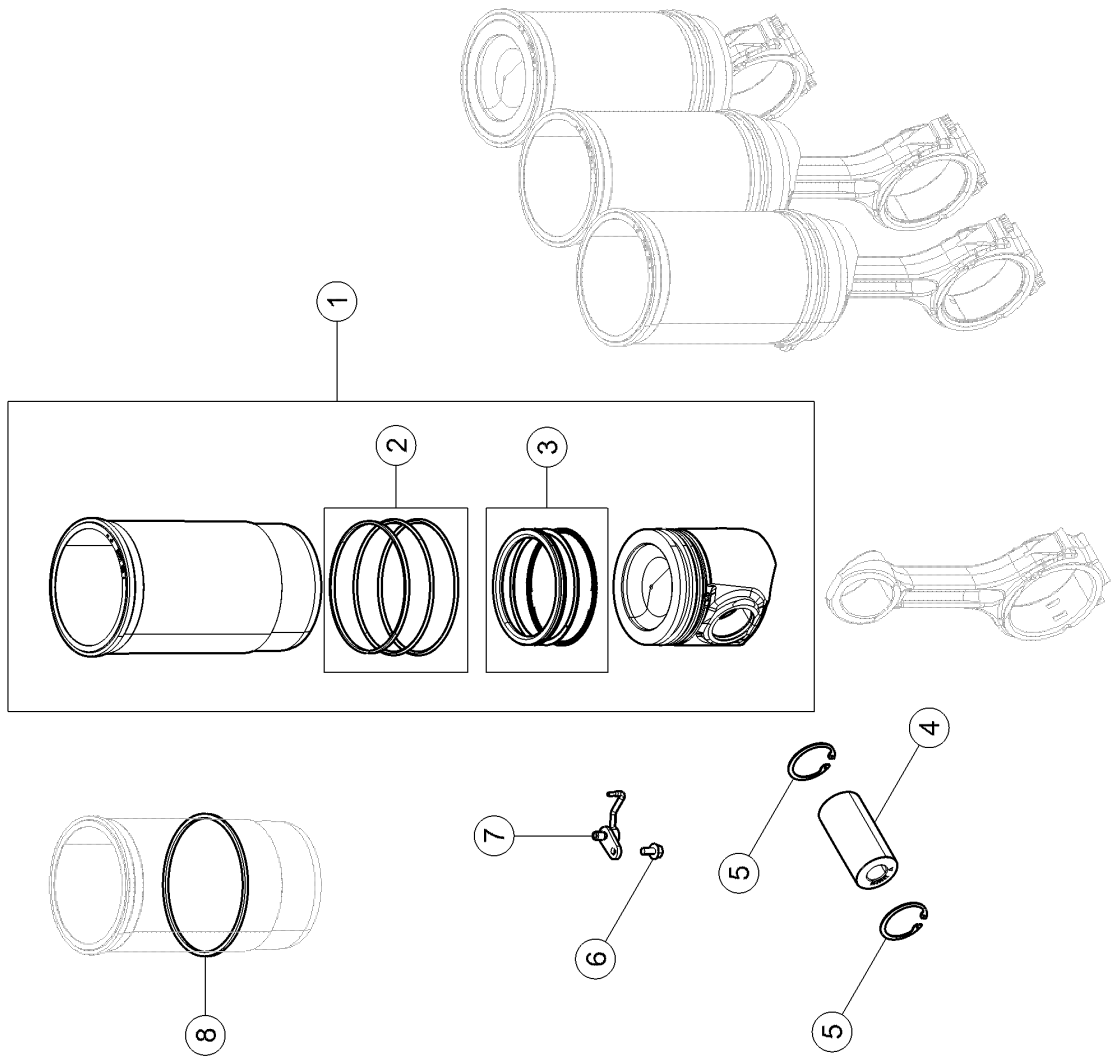
160 OIL PAN

Pos.	Part No.	Description	Dimension	Quantity	Conditions
1	00 1170 843 0	CASING		1	
2	00 1166 771 0	FLAT SEAL		1	
3	60 0502 144 4	SCREW	M8X35	6	
4	00 1161 404 0	PLUG		2	
5	60 0502 160 8	O-RING	15,3X2,2-N	3	
6	00 1132 475 0	SCREW		2	
7	60 0502 160 7	PLUG	F-M18X1,5 ERS.D.7700054	2	
8	60 0502 625 3	SCREW	M10X100	2	
9	60 0502 165 4	SCREW	M10X35	18	
10	00 2611 791 0	RUBBER PIPE		1	



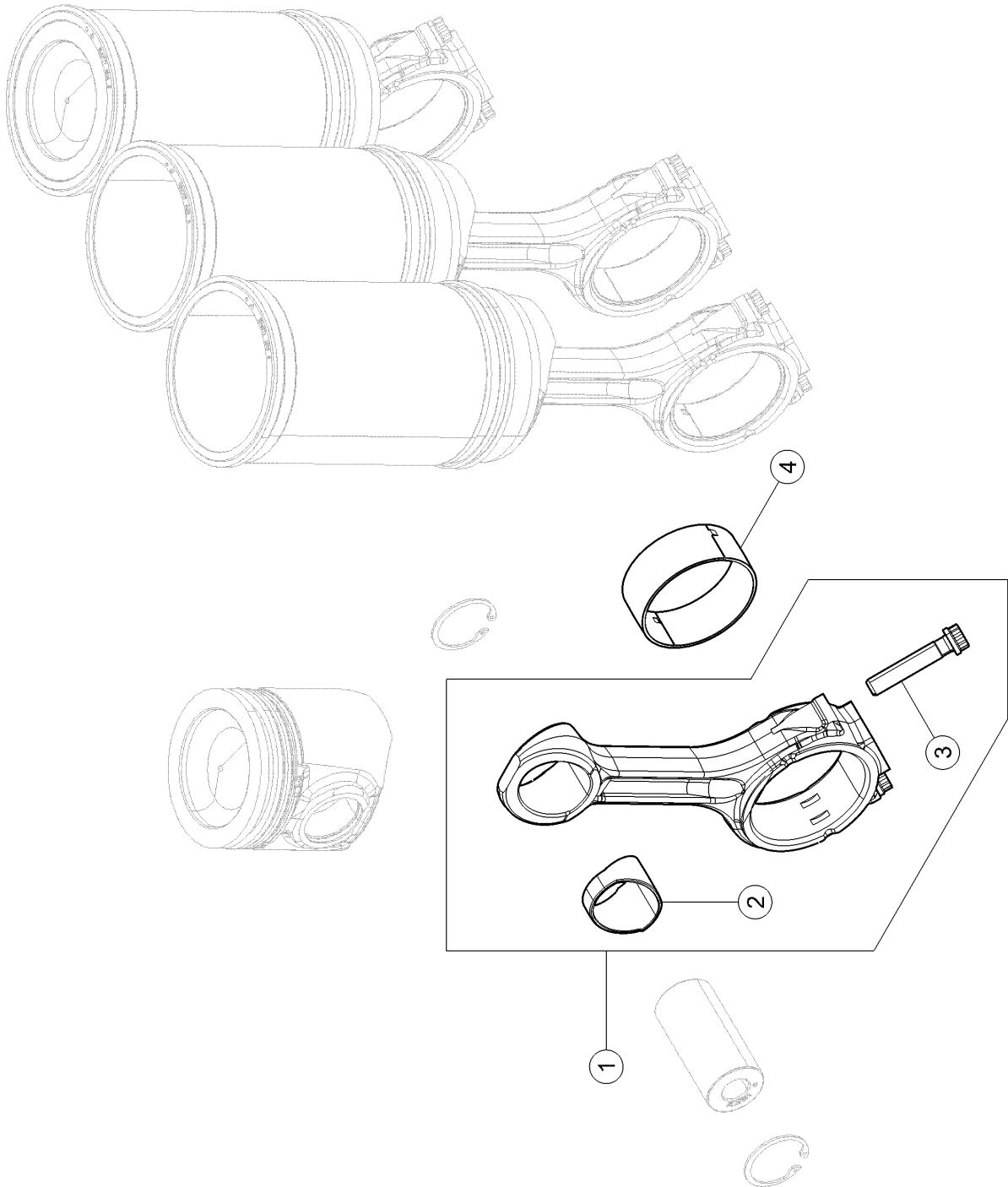
160 OIL PAN

Pos.	Part No.	Description	Dimension	Quantity	Conditions
1	00 1145 355 0	GAUGE		1	
2	00 1146 111 0	TUBE		1	



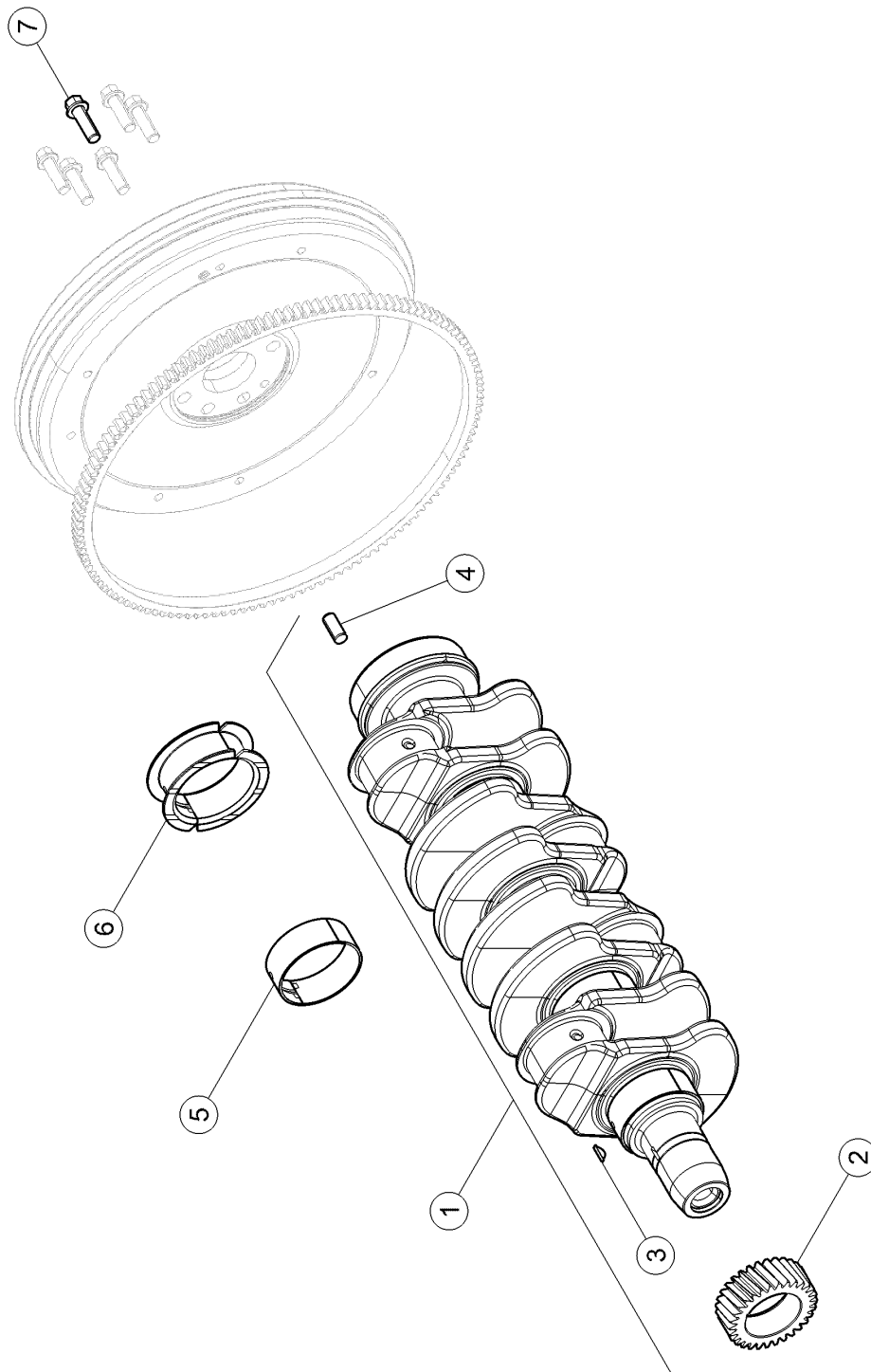
100 CYLINDER LINER, PISTON

Pos.	Part No.	Description	Dimension	Quantity	Conditions
1	00 1166 970 0	PISTON-LINER		4	
2	00 1146 460 0	SEALING RING SET		4	
3	00 1164 944 0	SET OF PISTON RINGS		4	
4	00 1167 613 0	SHAFT		4	
5	60 0501 281 4	INNER CIRCLIP		8	
6	00 1145 889 0	SCREW		4	
7	00 1145 888 0	NOZZLE		4	
8	60 0501 281 5	ADJUSTING DISC		4	1)
8	60 0501 281 6	ADJUSTING DISC		4	2)
1)	Remarks		[SR] EP 0.05MM		
2)	Remarks		[SR] EP 0.10MM		



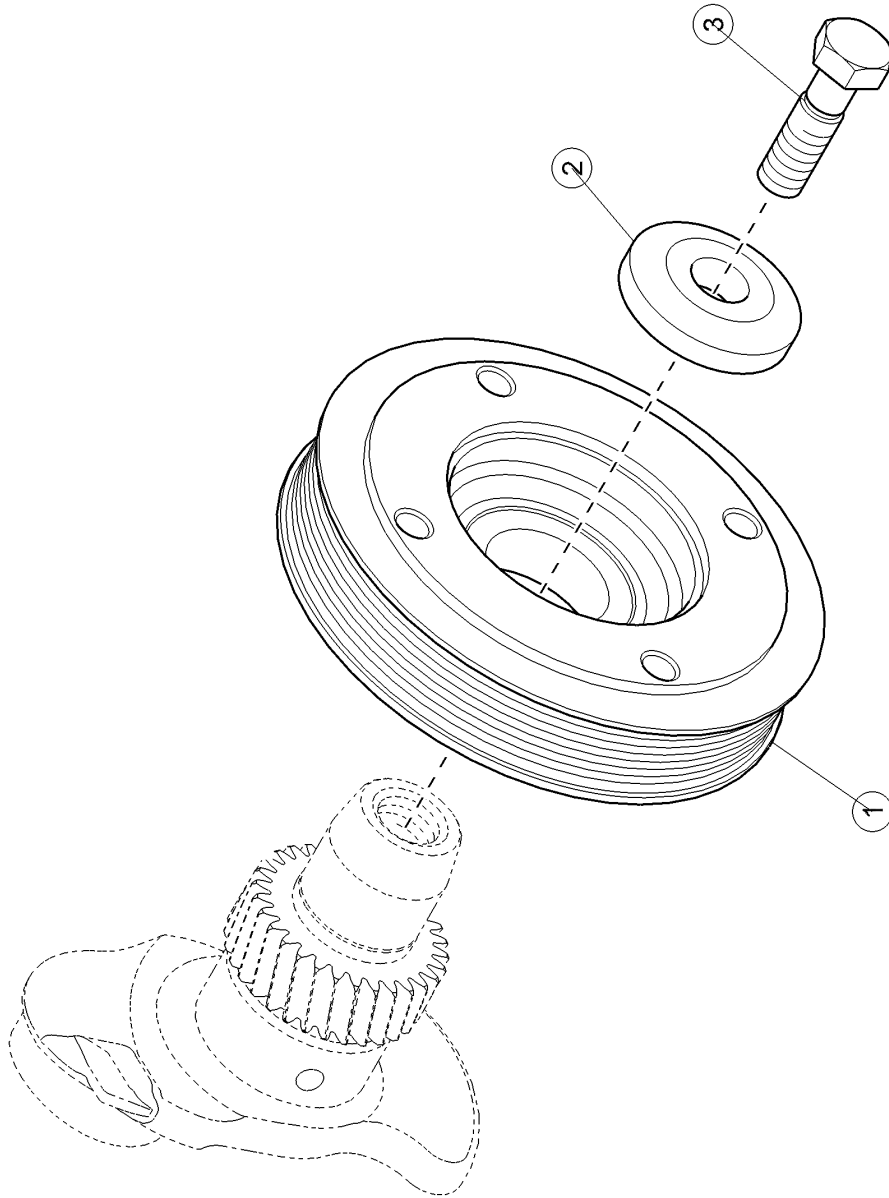
120 CONNECTING ROD, CONNECTING ROD BEARINGS

Pos.	Part No.	Description	Dimension	Quantity	Conditions
1	60 0502 453 6	CONNECTING ROD		4	
2	60 0502 147 6	RING		4	
3	60 0502 453 7	SCREW	12 PTS M12 X 1,25 - 61	8	
4	60 0502 147 8	BEARING		4	1)
4	60 0502 147 9	BEARING		4	2)
1)	Remarks		Standard		
2)	Remarks		-0.254MM		



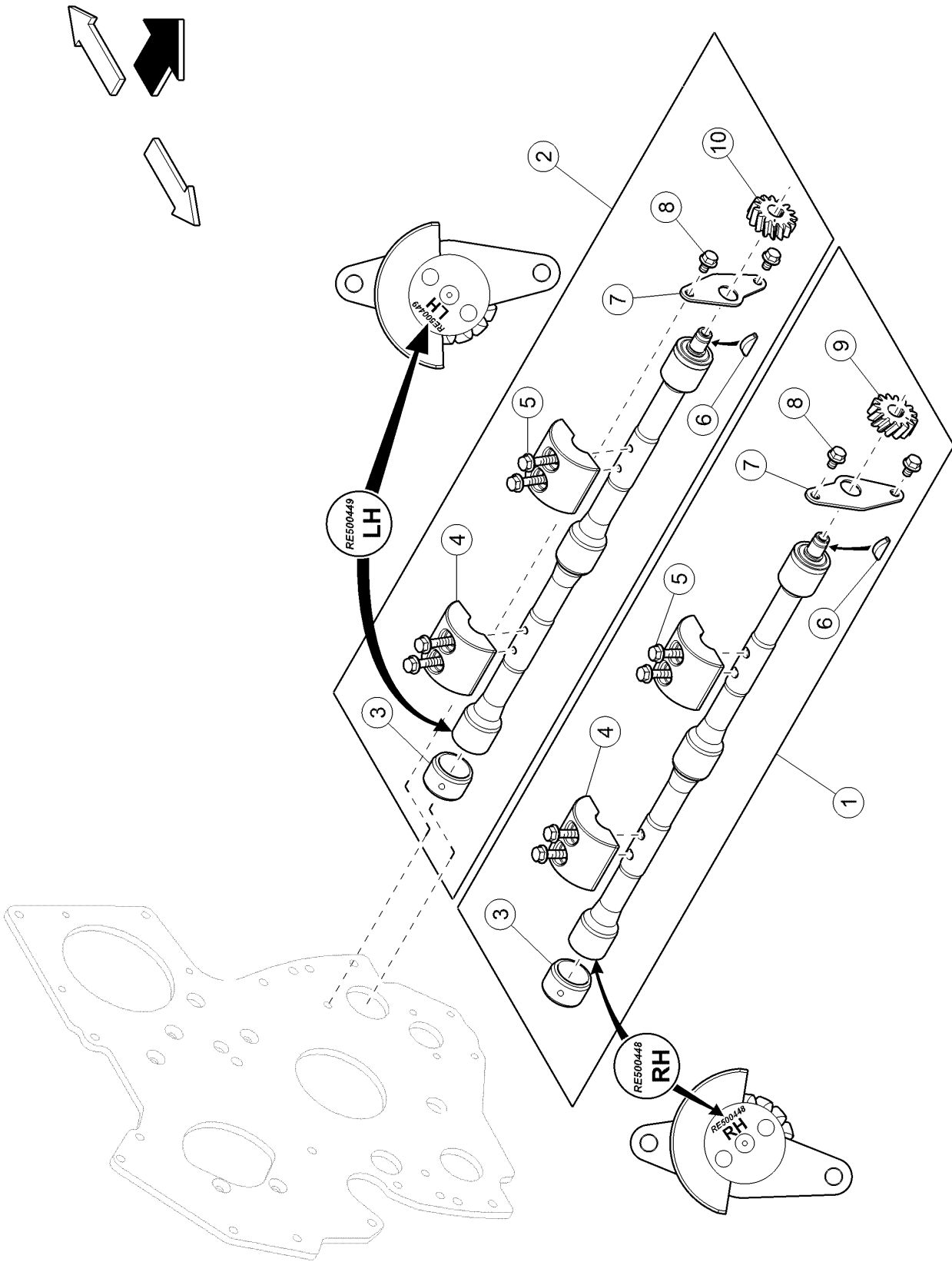
140 CRANKSHAFT

Pos.	Part No.	Description	Dimension	Quantity	Conditions
1	00 1145 892 0	CRANKSHAFT		1	
2	60 0502 148 5	WHEEL		1	
3	60 0502 869 7	KEY		1	
4	60 0501 317 4	CENTRING PIN		1	
5	60 0502 148 3	BEARING		4	1)
5	60 0502 148 4	BEARING		4	2)
6	60 0502 148 1	BEARING		1	1)
6	60 0502 148 2	BEARING		1	2)
7	00 1164 945 0	STD SCREW		6	
1)	Remarks		Standard		
2)	Remarks		-0.254MM		



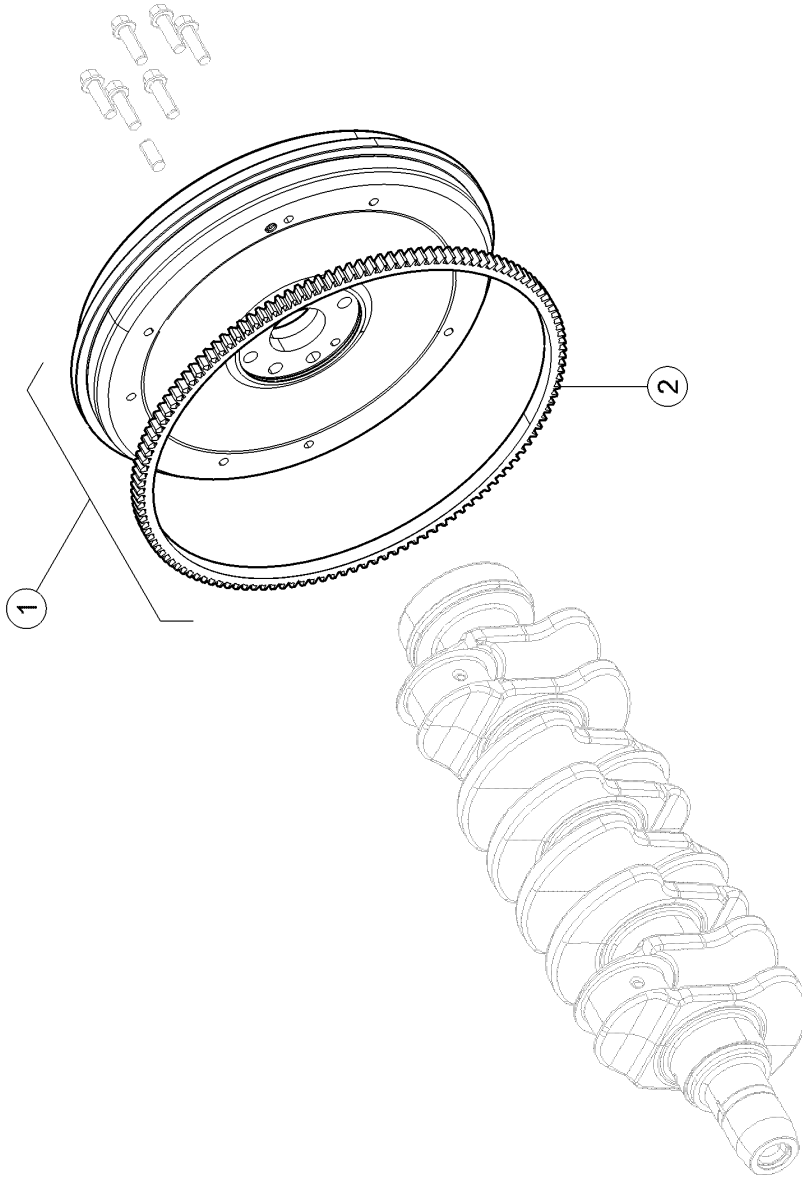
160 CRANKSHAFT PULLEY WHEEL

Pos.	Part No.	Description	Dimension	Quantity	Conditions
1	00 1172 566 0	CRANKSHAFT PULLEY		1	
2	60 0503 091 1	WASHER		1	
3	60 0502 866 8	SCREW	M20X70	1	



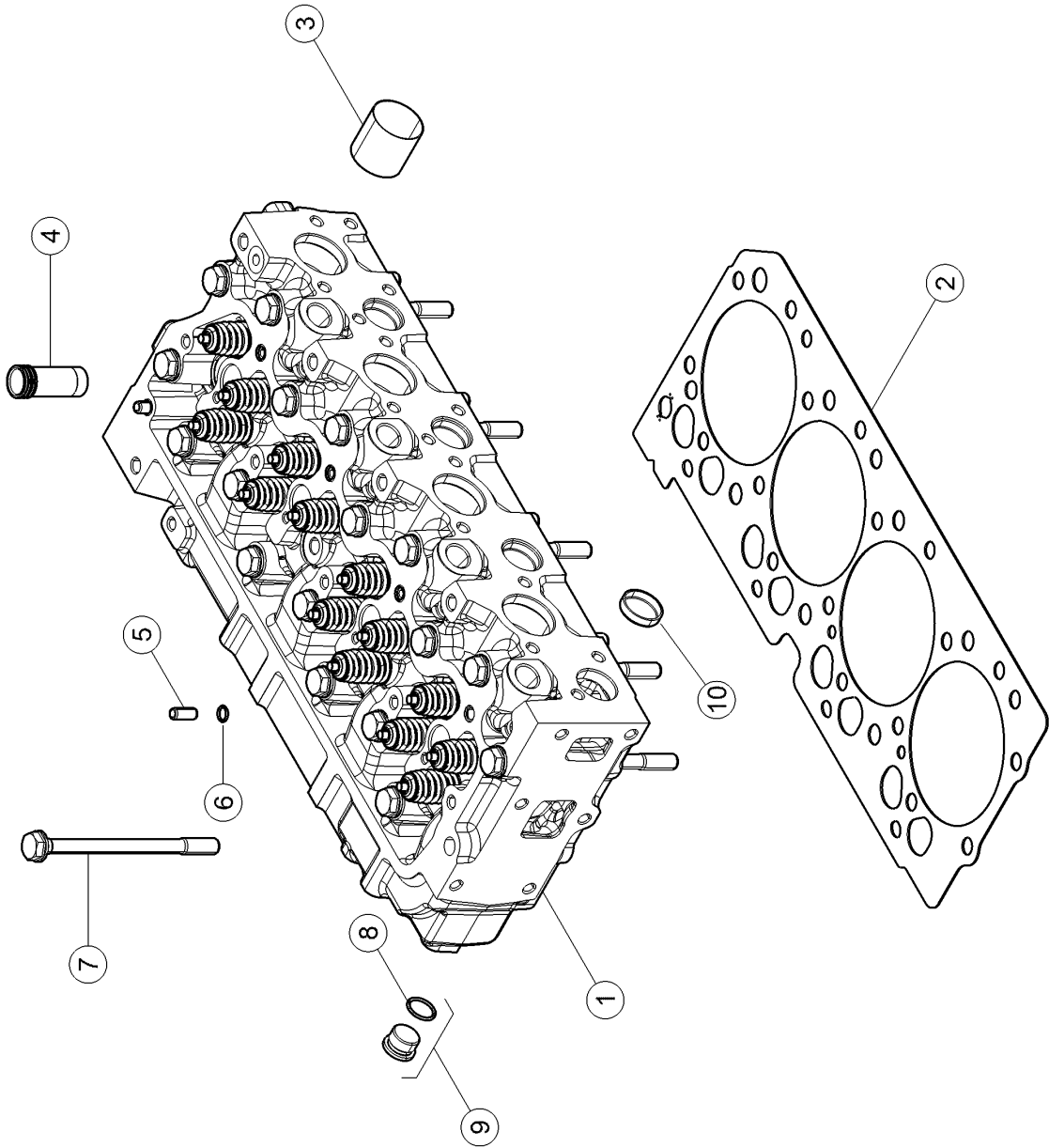
200 MASS BALANCING

Pos.	Part No.	Description	Dimension	Quantity	Conditions
1	60 0502 594 0	SHAFT		1	
2	60 0502 594 1	SHAFT		1	
3	60 0502 593 1	RING		6	
4	60 0502 594 6	FLYWEIGHT		4	
5	60 0502 144 5	SCREW	M8X45	8	
6	60 0502 151 0	KEY		2	
7	60 0502 594 4	PLATE		2	
8	60 0502 594 5	SCREW		4	
9	60 0502 594 2	WHEEL		1	
10	60 0502 594 3	WHEEL		1	



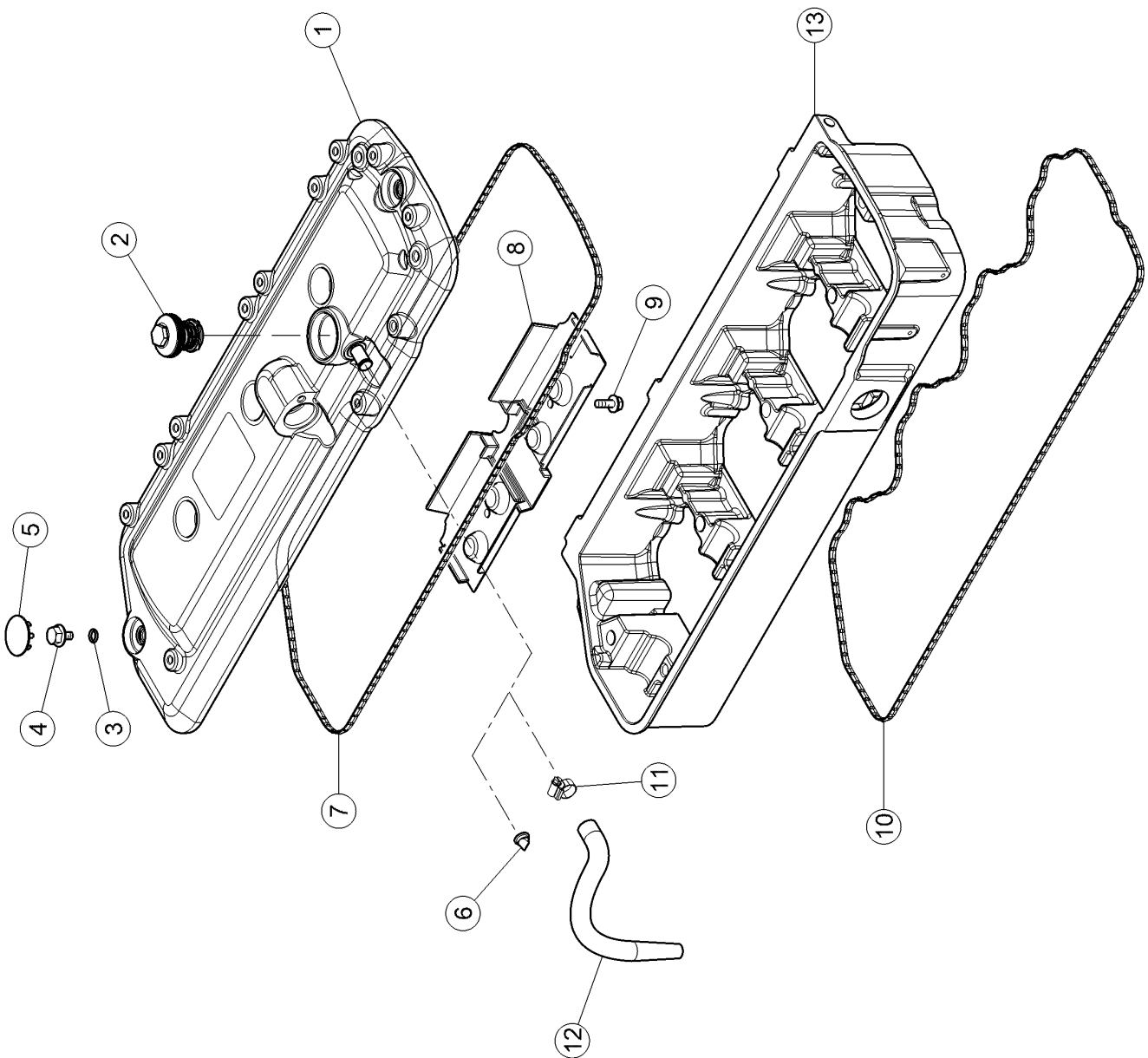
220 FLYWHEEL

Pos.	Part No.	Description	Dimension	Quantity	Conditions
1	00 1161 407 0	FLYWHEEL		1	
2	77 0004 531 5	TOOTHED RIM		1	



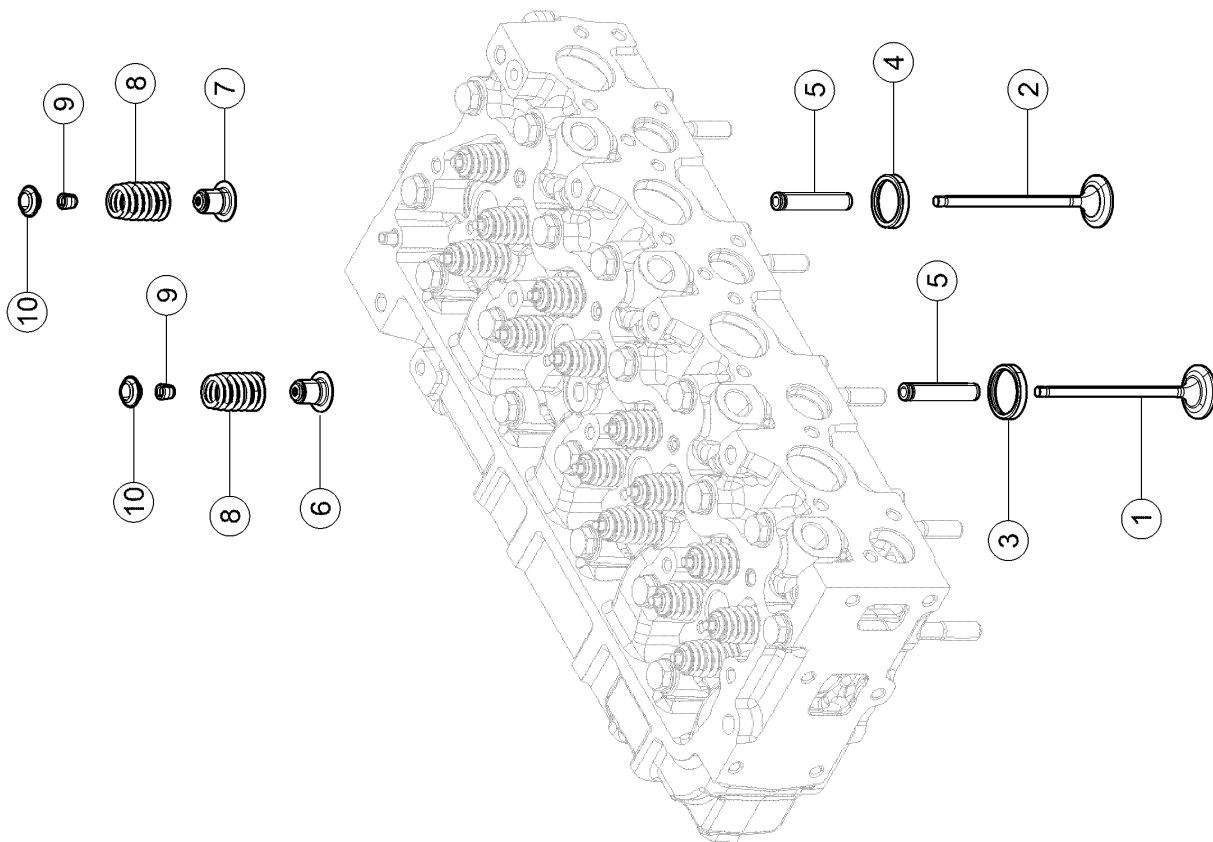
100 CYLINDER HEAD

Pos.	Part No.	Description	Dimension	Quantity	Conditions
1	00 1166 502 0	CYLINDER HEAD		1	
2	00 1145 358 0	CYLINDER HEAD GASKET		1	
3	00 1145 915 0	SLEEVE		4	
4	00 1142 367 0	LINER		4	
5	00 1145 916 0	RING		2	
6	77 0103 099 4	O-RING		2	
7	00 1161 409 0	SCREW		18	
8	60 0502 160 4	O-RING	19X2.4	1	
9	00 1145 914 0	BLANKING COVER		1	
10	60 0501 288 3	LOCK		5	



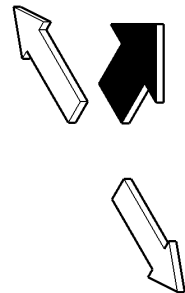
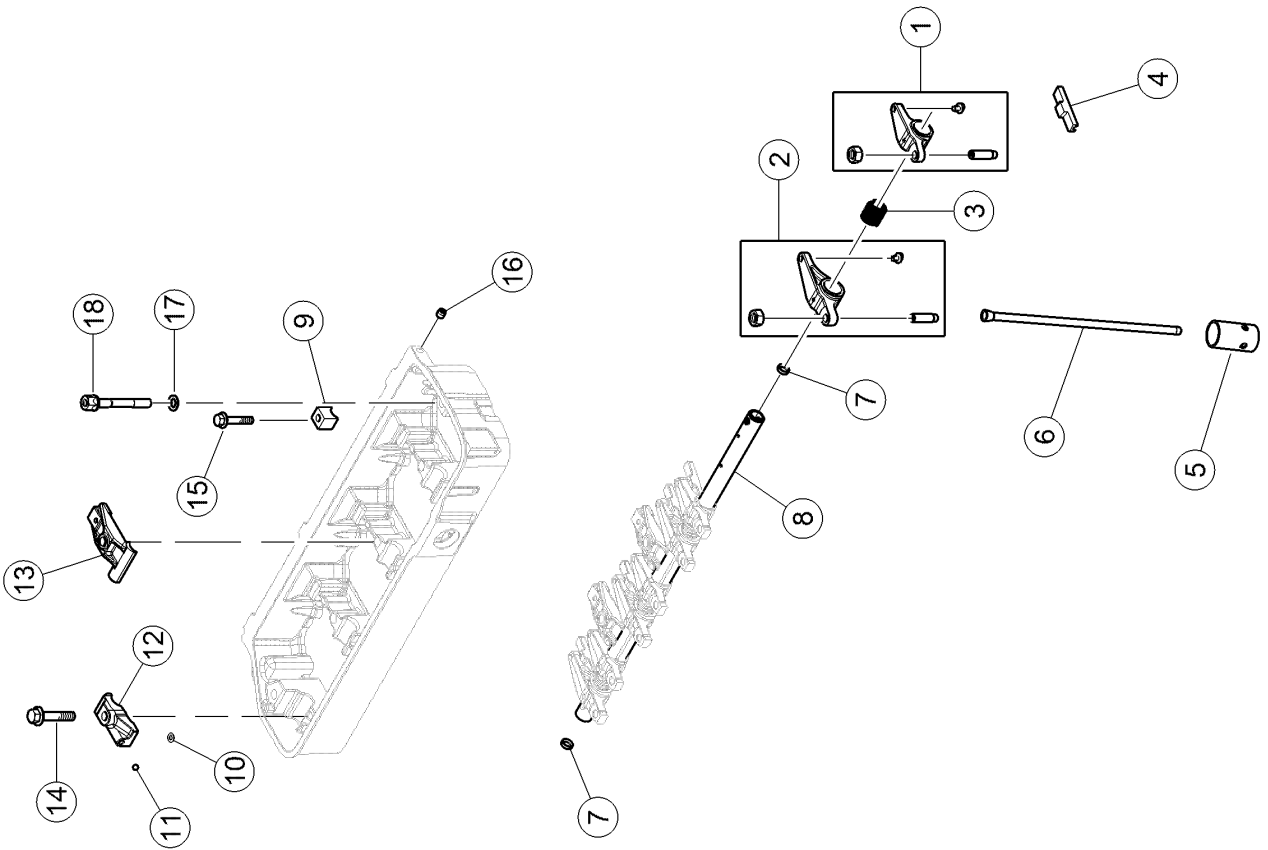
120 CYLINDER HEAD COVER

Pos.	Part No.	Description	Dimension	Quantity	Conditions
1	00 1153 352 0	ROCKER COVER		1	
2	00 1145 919 0	PLUG		1	
3	00 0219 147 0	O-RING	7,59X2,62-N	5	
4	00 1145 920 0	PLUG		5	
5	60 0502 134 4	PLUG		5	
6	00 1145 921 0	VALVE		1	
7	00 1135 008 0	GASKET		1	
8	00 1132 508 0	DEFLECTOR		1	
9	60 0502 144 8	SCREW	M6X16	2	
10	00 1148 710 0	SEALING RING		1	
11	60 0500 348 1	CLAMP	A 020-32X9 W2	1	
12	00 1153 353 0	PIPE		1	
13	00 1166 807 0	CASING		1	



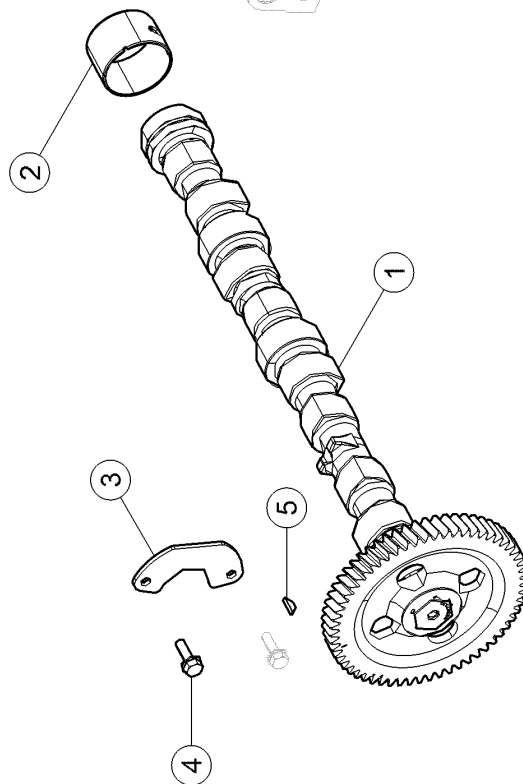
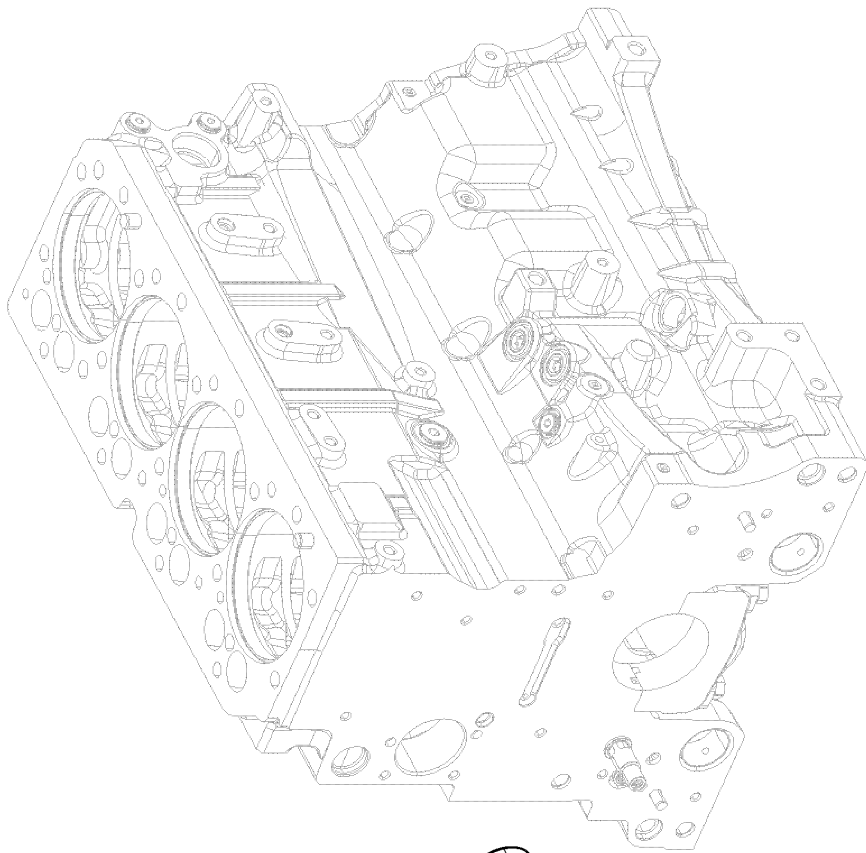
140 VALVES

Pos.	Part No.	Description	Dimension	Quantity	Conditions
1	00 1146 483 0	VALVE		8	1)
2	00 1145 923 0	VALVE		8	2)
3	00 1132 514 0	VALVE SEAT		8	
4	00 1132 513 0	VALVE SEAT		8	
5	00 1152 441 0	GUIDE		16	
6	00 1169 342 0	LIP SEAL		8	
7	00 1169 343 0	LIP SEAL		8	
8	00 1161 410 0	SPRING		16	
9	00 1148 631 0	HALF-CONE		32	
10	00 1132 518 0	WASHER		16	
<hr/>					
1)	Remarks		Adm.		
<hr/>					
2)	Remarks		Echapt		
<hr/>					



160 ROCKER ARM

Pos.	Part No.	Description	Dimension	Quantity	Conditions
1	00 1165 757 0	ROCKER ARM		4	
2	00 1132 528 0	ROCKER ARM		4	
3	00 1132 530 0	SPRING		4	
4	00 1132 537 1	TIPPER		8	
5	00 1161 548 0	PUSHROD		8	
6	00 1166 976 0	ROD		8	
7	00 1132 534 0	PLUG		2	
8	00 1135 005 0	SHAFT		1	
9	00 1132 533 0	FLANGE		1	
10	00 1145 929 0	O-RING		1	
11	00 1145 930 0	BALL		1	
12	00 1132 524 0	FLANGE		1	
13	00 1145 931 0	FLANGE		3	
14	00 1145 932 0	SCREW	M10X50	1	
15	00 1145 933 0	SCREW		1	
16	00 1145 934 0	PLUG		2	
17	60 0501 278 2	WASHER		5	
18	00 1132 536 0	SCREW		5	





Suggest:

For more complete manuals. Please go to the home page.

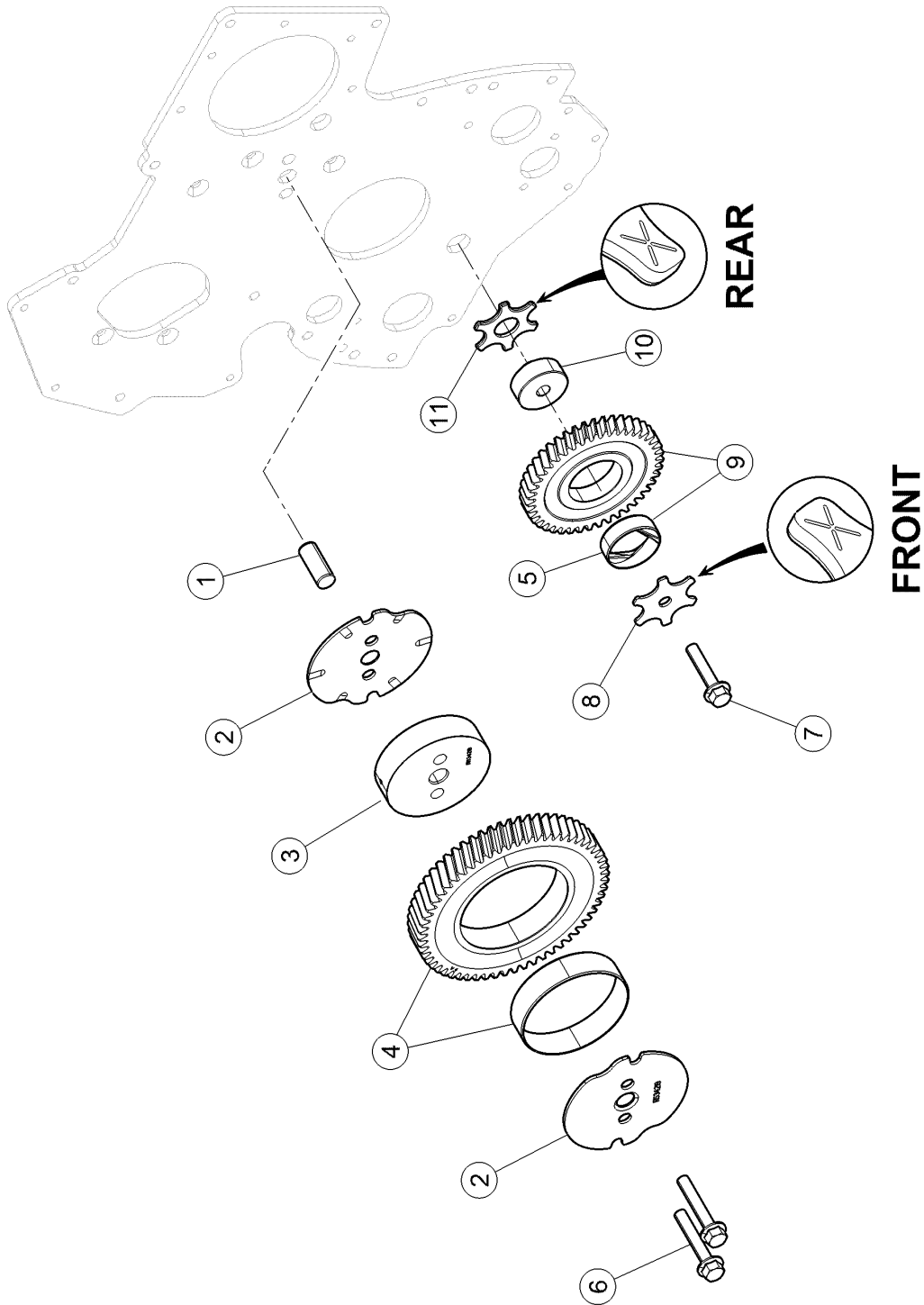
<https://www.ebooklibonline.com>

If the above button click is invalid. Please download this document first, and then click the above link to download the complete manual.

Thank you so much for reading

180 CAMSHAFT, CAMSHAFT BEARING BUSHES

Pos.	Part No.	Description	Dimension	Quantity	Conditions
1	00 1161 411 0	CAMSHAFT		1	
2	60 0501 294 1	BEARING		1	
3	60 0502 151 1	PLATE		1	
4	60 0502 145 6	SCREW	M8X25	2	
5	60 0502 151 0	KEY		1	



200 IDLER GEAR

Pos.	Part No.	Description	Dimension	Quantity	Conditions
1	00 1132 541 0	LOCATING PIN		1	
2	00 1161 412 0	WASHER		2	
3	00 1161 413 0	HUB		1	
4	00 1132 544 0	WHEEL		1	
5	60 0502 152 0	RING		1	
6	00 1169 744 0	STD SCREW	M10X55	2	
7	60 0502 152 1	SCREW		1	
8	60 0502 152 2	WASHER		1	
9	60 0502 151 9	WHEEL		1	
10	60 0502 152 3	SHAFT		1	
11	60 0501 299 8	WASHER		1	

<https://www.ebooklibonline.com>

Hello dear friend!

Thank you very much for reading.

Enter the link into your browser.

The full manual is available for immediate download.

<https://www.ebooklibonline.com>