

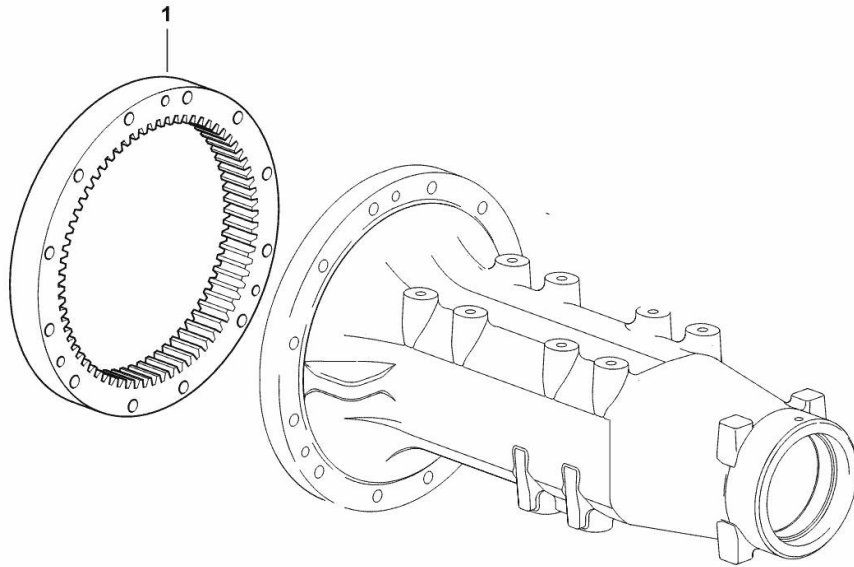
**REAR AXLE CROWN WHEEL SX/LH/LI - DX/RH/RE**

Fig.	P/n	QTY	Name
------	-----	-----	------

**Notes:**

[XM.K 100 T4i -> ZKDY470200TH10001]

1	0.445.4440.3	2	crown wheel
---	--------------	---	-------------



9\_62047\_10\_0-A-001

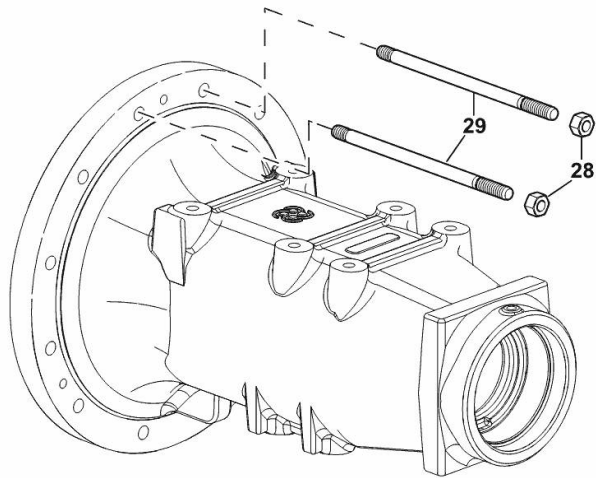
**REAR AXLE FIXINGS WITH 60 L HYDRAULIC SYSTEM SX/LH/LI**

Fig.	P/n	QTY	Name
------	-----	-----	------

**Notes:**

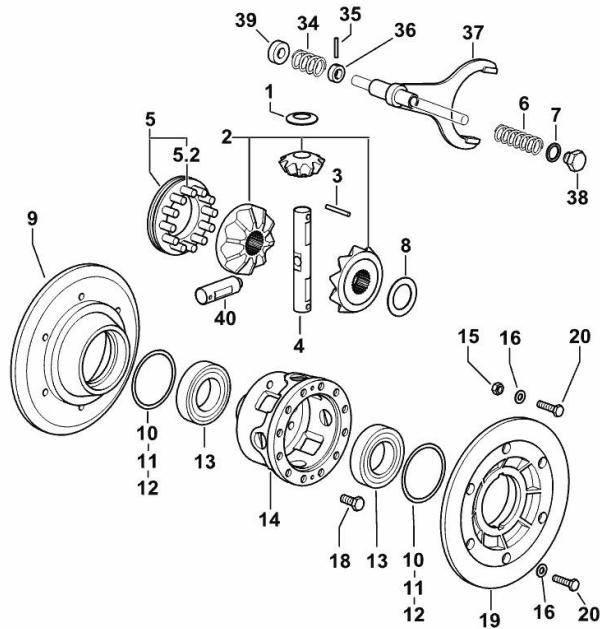
- FOR TYPES WITH HYDRAULIC PARK BRAKE [XM.K 100 T4i -> ZKDY470200TH10001]

28	2.1011.107.2	2	nut m 12 p.1.75
29	2.0422.434.7	2	stud bolt m 12 p.1.75x190



9\_Y5682\_66\_0-B-001

**4-PLANET PINION DIFFERENTIAL**



9\_B8635\_00\_0-A-001

Fig.	P/n	QTY	Name
------	-----	-----	------

**Notes:**

[XM.K 100 T4i -> ZKDY470200TH10001]

1	0.157.3550.0	4	shoulder ring
2	0.011.7735.3	1	crown wheel
3	2.1631.519.0	2	roll pin 6x50
4	0.010.0614.0/10	1	pin
5	0.135.3527.3/20	1	sleeve
5.2	0.135.3550.0/10	12	pin
6	2.4019.225.1	1	spring 28 x 79 x 4.5
7	2.1560.014.0	1	washer 18.2 x 24
8	2.1599.427.0/10	2	shoulder ring 42x64x0.3
9	0.009.6540.0/30	1	flange dx/rh/re
10	2.1580.319.0	5	shim 86x98x0.5
11	2.1580.320.0	4	shim 86x98x0.2
12	2.1580.321.0	2	shim 86x98x0.05
13	2.2520.012.0	2	roller bearing iso 55 kb 02
14	0.011.7732.0/30	1	differential carrier
15	2.1011.106.2	2	nut m 10 p.1.5
16	2.1480.015.1	14	washer 10
18	2.0129.028.2	12	screw m 12 p.1.25x30
19	0.009.6541.0/30	1	flange sx/lh/li
20	2.0312.314.2	12	screw m 10 p.1.5 x 40
34	2.4019.339.1	1	spring 32x56.5x3.5
35	2.1631.415.2	1	pin 5x32
36	0.190.6858.0	1	spacer 16X28X10
37	0.445.3541.0/30	1	fork
38	2.3110.405.1	1	plug m 18 p.1.5 x 15
39	2.1549.146.0/10	1	spacer 16.5X33X12
40	0.010.0613.0	2	pin

**<https://www.ebooklibonline.com>**

Hello dear friend!

Thank you very much for reading.

Enter the link into your browser.

The full manual is available for immediate download.

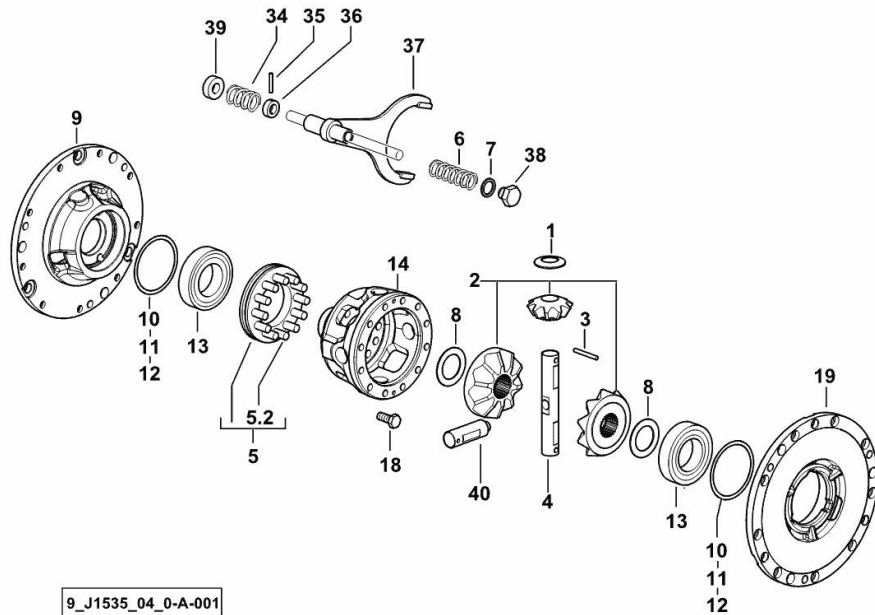
**<https://www.ebooklibonline.com>**

**4-PLANET PINION DIFFERENTIAL**

Fig.	P/n	QTY	Name
------	-----	-----	------

**Notes:**

- FOR TYPES WITH HYDRAULIC PARK BRAKE [XM.K 100 T4i -> ZKDY470200TH10001]



1	0.157.3550.0	4	shoulder ring
2	0.011.7735.3	1	crown wheel
3	2.1631.519.0	2	roll pin 6x50
4	0.010.0614.0/10	1	pin
5	0.135.3527.3/20	1	sleeve
5.2	0.135.3550.0/10	12	pin
6	2.4019.225.1	1	spring 28 x 79 x 4.5
7	2.1560.014.0	1	washer 18.2 x 24
8	2.1599.427.0/10	2	shoulder ring 42x64x0.3
9	0.015.2817.0/20	1	flange dx/rh/re
10	2.1580.319.0	5	shim 86x98x0.5
11	2.1580.320.0	4	shim 86x98x0.2
12	2.1580.321.0	2	shim 86x98x0.05
13	2.2520.012.0	2	roller bearing iso 55 kb 02
14	0.011.7732.0/30	1	differential carrier
18	2.0129.028.2	12	screw m 12 p.1.25x30
19	0.015.2833.0/20	1	flange sx/lh/li
34	2.4019.339.1	1	spring 32x56.5x3.5
35	2.1631.415.2	1	pin 5x32
36	0.190.6858.0	1	spacer 16X28X10
37	0.445.3541.0/30	1	fork
38	2.3110.405.1	1	plug m 18 p.1.5 x 15
39	2.1549.146.0/10	1	spacer 16.5X33X12
40	0.010.0613.0	2	pin

9\_J1535\_04\_0-A-001

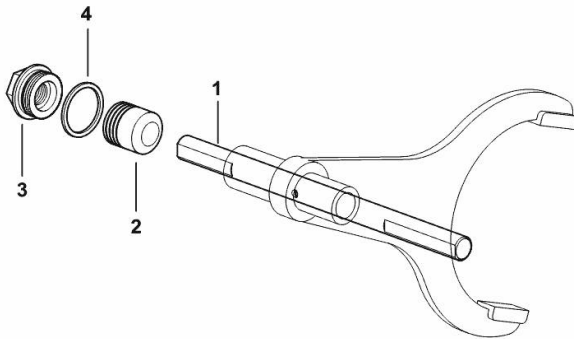
**DIFFERENTIAL LOCK CONTROL - ELECTROHYDRAUDLIC**

Fig.	P/n	QTY	Name
------	-----	-----	------

**Notes:**

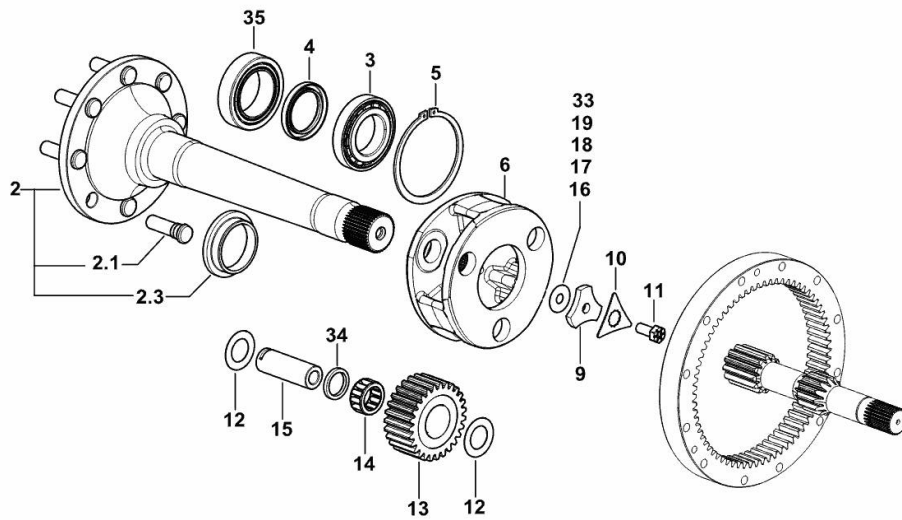
[XM.K 100 T4i -> ZKDY470200TH10001]

1	0.008.5636.0	1	rod mm 253
2	0.008.5650.0/20	1	piston
3	2.3199.176.0/10	1	plug m 30 p.1.5 / m 14 p.1.5
4	2.1560.023.0	1	copper gasket 30.3 x 36



9\_61435\_02\_0-A-001

**REAR REDUCTION GEARS AND AXLE SHAFTS SX/LH/LI - DX/RH/RE**



9\_J1547\_30\_0-B-001

Fig.	P/n	QTY	Name
------	-----	-----	------

**Notes:**

- FOR TYPES WITH HYDRAULIC PARK BRAKE [XM.K 100 T4i -> ZKDY470200TH10001]

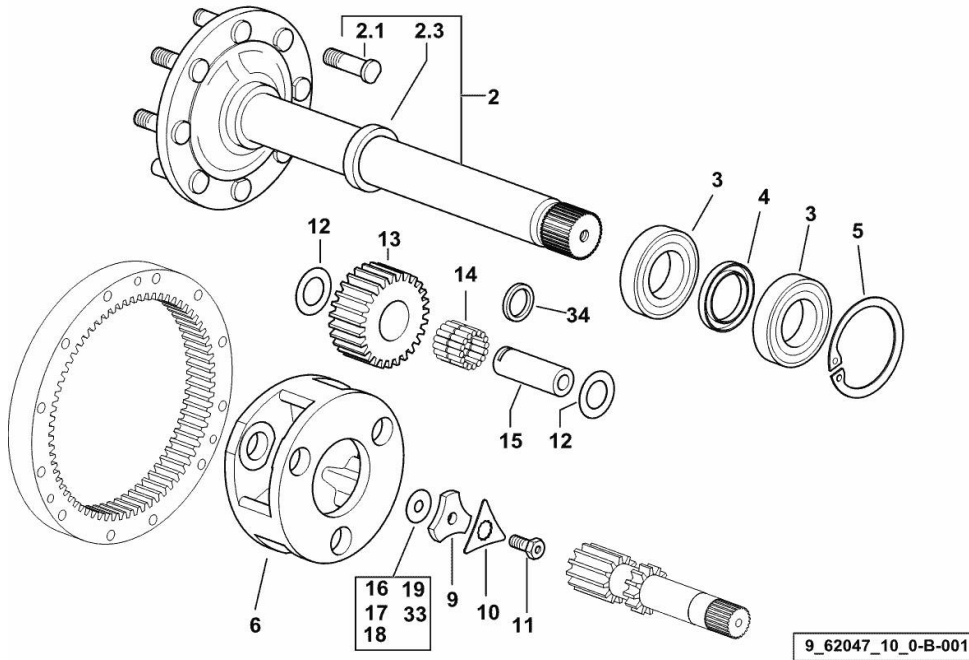
2	0.015.3262.3/10	2	half-shaft
2.1	0.148.4737.0/20	8	small column m 20x68
2.3	0.008.4226.0/10	1	spacer
3	2.2520.013.0	2	roller bearing iso 60 kb 02
4	2.1510.331.0	2	oil seal 60x85x10
5	2.1410.045.1	2	circlip 125
6	0.008.5581.0/10	2	differential carrier
9	0.255.4745.0/10	2	spacer
10	0.008.5605.0	2	washer
11	2.0139.041.1	2	screw m 14 p.1.5 x 33
12	2.1589.170.0	12	shoulder ring 35x58x1
13	0.008.5582.0	6	planet gear
14	2.2999.197.0	6	roller cage
15	0.445.4725.0	6	pin
16	2.1589.106.0	6	shoulder ring 14.5 x 41 x 1.0
17	2.1589.107.0	2	shoulder ring 14.5 x 41 x 0.5
18	2.1589.108.0	2	shoulder ring 14.5 x 41 x 0.2
19	2.1589.109.0	2	shoulder ring 14.5 x 41 x 0.1
33	2.1589.246.0	2	shoulder ring 14.5 x 41 x 0.15
34	2.1549.138.0	6	spacer
35	2.2999.227.0	2	special bearing 70x110x31

**REAR REDUCTION GEARS AND AXLE SHAFTS SX/LH/LI - DX/RH/RE**

Fig.	P/n	QTY	Name
------	-----	-----	------

**Notes:**

[XM.K 100 T4i -> ZKDY470200TH10001]



2	0.445.4734.3/60	2	half-shaft
2.1	0.148.4737.0/20	8	small column m 20x68
2.3	0.445.4750.0	1	spacer
3	2.2520.013.0	4	roller bearing iso 60 kb 02
4	2.1510.331.0	2	oil seal 60x85x10
5	2.1410.045.1	2	circlip 125
6	0.008.5581.0/10	2	differential carrier
9	0.255.4745.0/10	2	spacer
10	0.008.5605.0	2	washer
11	2.0139.041.1	2	screw m 14 p.1.5 x 33
12	2.1589.170.0	12	shoulder ring 35x58x1
13	0.008.5582.0	6	planet gear
14	2.2999.197.0	6	roller cage
15	0.445.4725.0	6	pin
16	2.1589.106.0	6	shoulder ring 14.5 x 41 x 1.0
17	2.1589.107.0	2	shoulder ring 14.5 x 41 x 0.5
18	2.1589.108.0	2	shoulder ring 14.5 x 41 x 0.2
19	2.1589.109.0	2	shoulder ring 14.5 x 41 x 0.1
33	2.1589.246.0	2	shoulder ring 14.5 x 41 x 0.15
34	2.1549.138.0	6	spacer

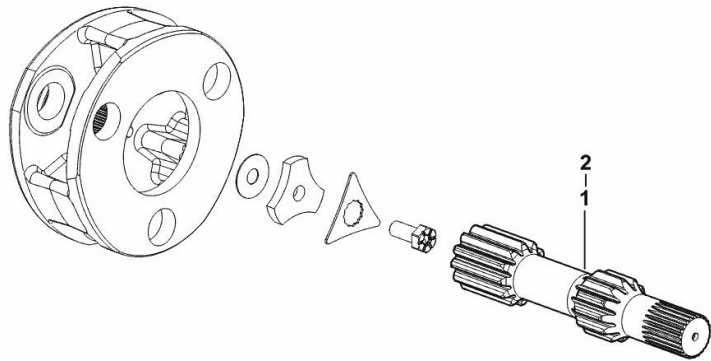
**HALF AXLES**

Fig.	P/n	QTY	Name
------	-----	-----	------

**Notes:**

- FOR TYPES WITH HYDRAULIC PARK BRAKE [XM.K 100 T4i -> ZKDY470200TH10001]

1	0.015.3705.0/10	1	half-shaft sx/lh/li
2	0.015.3703.0	1	half-shaft dx/rh/re



9\_J1547\_31\_0-A-001

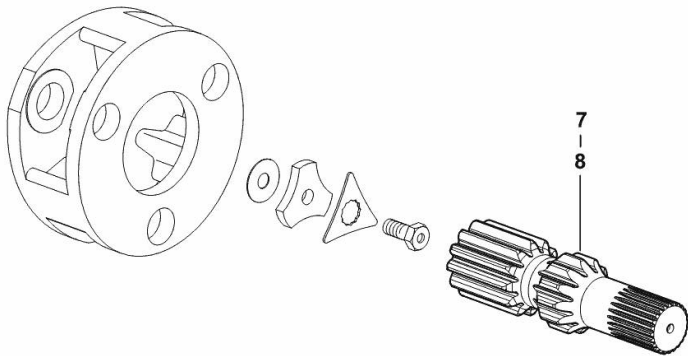
**HALF AXLES**

Fig.	P/n	QTY	Name
------	-----	-----	------

**Notes:**

[XM.K 100 T4i -> ZKDY470200TH10001]

7	0.445.4730.0/10	1	half-shaft Z = 12, dx/rh/re
8	0.445.4731.0/10	1	half-shaft Z = 12, sx/lh/li



9\_62047\_00\_0-A-001

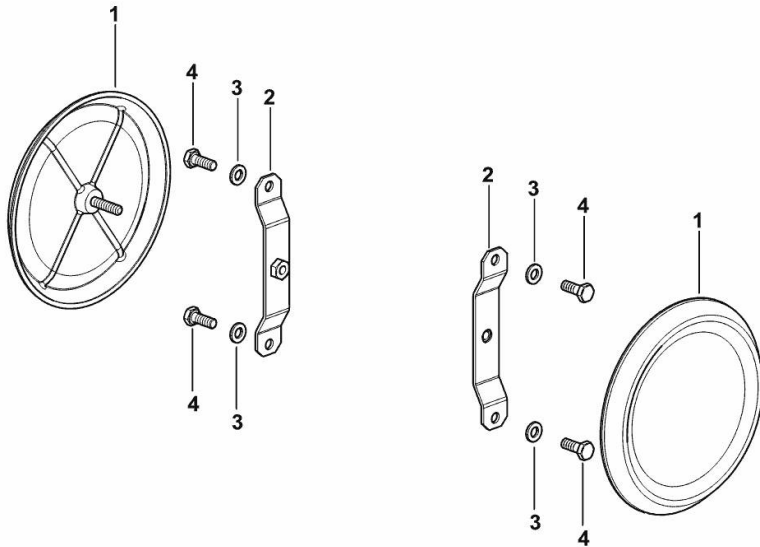
**REAR WHEEL HUB COVER**

Fig.	P/n	QTY	Name
------	-----	-----	------

**Notes:**

[XM.K 100 T4i -> ZKDY470200TH10001]

1	0.019.4336.3	2	small cover SX/LH/LI - DX/RH/RE
2	0.019.5747.3	2	bracket
3	2.0112.005.2	4	screw m 6 p.1 x 16
4	2.1310.002.2	4	flat washer 6.4x12.5



9\_Y4947\_35\_0-A-001

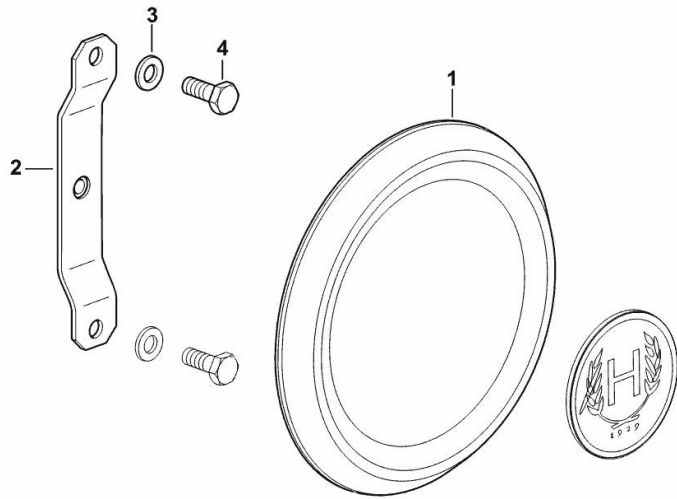
**REAR WHEEL HUB COVER**

Fig.	P/n	QTY	Name
------	-----	-----	------

**Notes:**

[XM.K 100 T4i -> ZKDY470200TH10001]

1	0.019.4336.3	2	small cover SX/LH/LI - DX/RH/RE
2	0.019.5747.3	2	bracket
3	2.1310.002.2	4	flat washer 6.4x12.5
4	2.0112.005.2	4	screw m 6 p.1 x 16



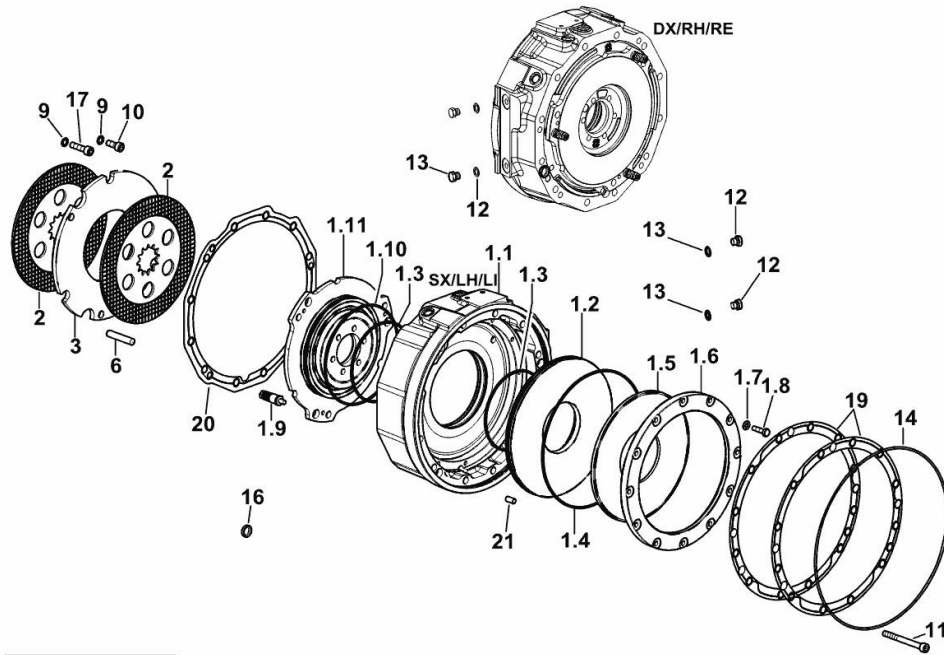
9\_Y7147\_35\_0-B-001

**REAR BRAKES SX/LH/LI - DX/RH/RE**

Fig.	P/n	QTY	Name
------	-----	-----	------

**Notes:**

- FOR TYPES WITH HYDRAULIC PARK BRAKE [XM.K 100 T4i -> ZKDY470200TH10001]



9\_J1554\_30\_0-A-003

1.1	0.021.2415.0/20	2	flange
1.2	0.018.9211.0	2	piston
1.3	2.1532.253.0	4	oil seal 148.82x3.53
1.4	2.1532.308.0	2	oil seal 253.59x3.53
1.5	2.1499.244.0	2	spring 250x105
1.6	0.015.2815.0/10	2	ring
1.7	2.1480.014.2	24	washer 8
1.8	2.0314.210.2	24	screw m 8 x 30
1.9	0.013.5769.4/60	6	device
1.10	2.1532.279.0	2	oil seal 183.74x3.53
1.11	0.015.2798.0/30	2	piston
2	0.016.3140.2	4	brake disc D=243
3	0.015.2805.0/20	2	spacer
6	2.1655.617.0	6	pin 12x65
9	2.1480.015.2	18	washer 10
10	2.0312.308.2	16	screw m 10 p.1.5 x 25
11	2.0312.326.2	8	screw m 10 p.1.5x100
12	2.1560.008.0	4	gasket 12.2 x 18
13	2.3110.302.2	4	plug m 12 p.1.75 x 10
14	2.1539.518.0	2	special oil seal 343x3.53
16	2.3171.009.4	1	expansion plug Ø 22
17	2.0312.314.2	2	screw m 10 p.1.5 x 40
19	0.017.1697.0/10	4	gasket
20	0.017.2401.0	2	gasket
21	2.1655.608.0	4	pin 12 x 24

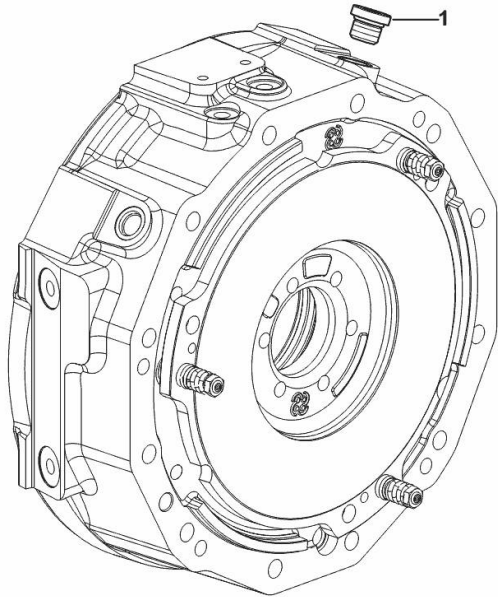
**PLUG**

Fig.	P/n	QTY	Name
------	-----	-----	------

**Notes:**

- FOR TYPES WITH HYDRAULIC PARK BRAKE [XM.K 100 T4i -> ZKDY470200TH10001]

1	2.3121.005.2	2	plug m 16 p.1.5
---	--------------	---	-----------------



9\_L8066\_32\_0-A-001

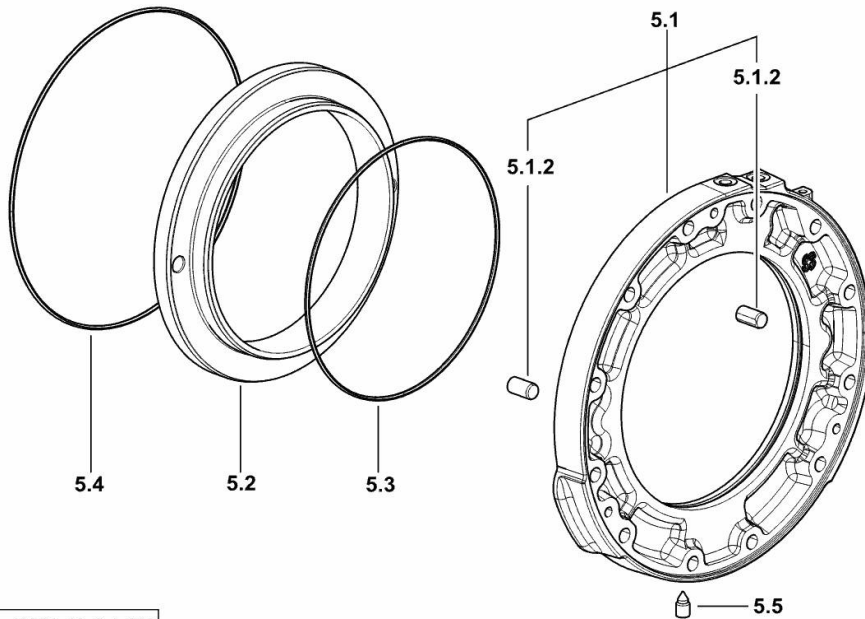
**REAR BRAKES**

Fig.	P/n	QTY	Name
------	-----	-----	------

**Notes:**

[XM.K 100 T4i -> ZKDY470200TH10001]

5.1	0.008.5031.3/70	1	box
5.1.2	2.1699.190.0	2	pin 14x28
5.2	0.255.5448.0/30	1	piston
5.3	2.1539.180.0	1	special oil seal 228x3.53
5.4	2.1539.179.0	1	special oil seal 279x3.53
5.5	2.3139.013.7	1	plug m12x1,25



9\_40554\_10\_0-A-002



**Suggest:**

**For more complete manuals. Please go to the home page.**

**<https://www.ebooklibonline.com>**

**If the above button click is invalid. Please download this document first, and then click the above link to download the complete manual.**

**Thank you so much for reading**

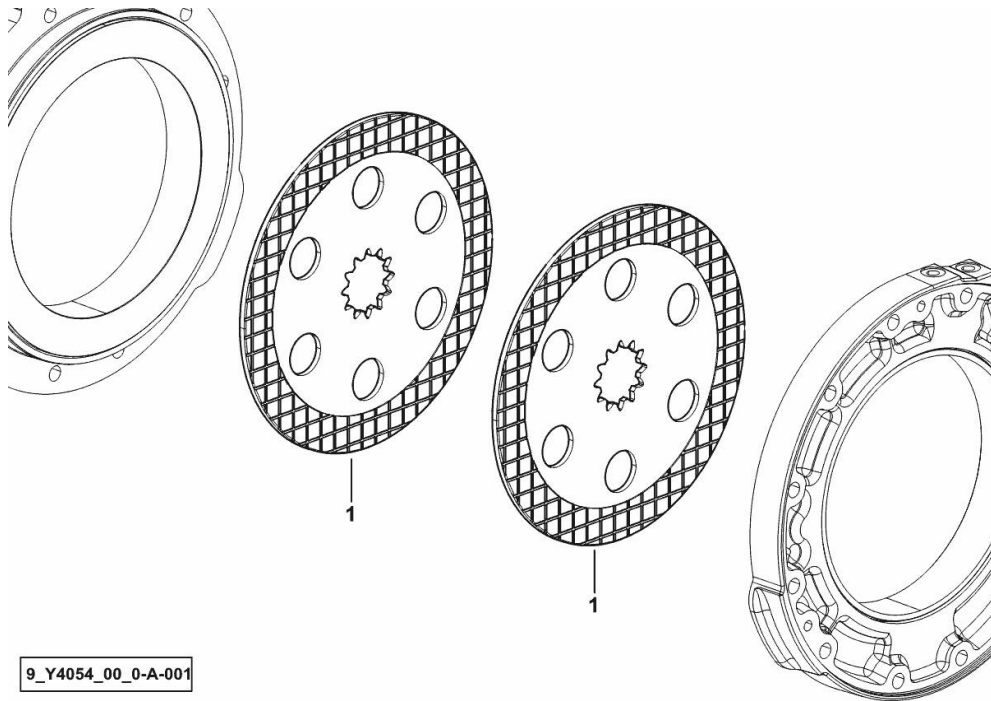
**REAR BRAKES**

Fig.	P/n	QTY	Name
------	-----	-----	------

**Notes:**

[XM.K 100 T4i -> ZKDY470200TH10001]

1	0.011.3765.2	2	brake disc
---	--------------	---	------------



9\_Y4054\_00\_0-A-001

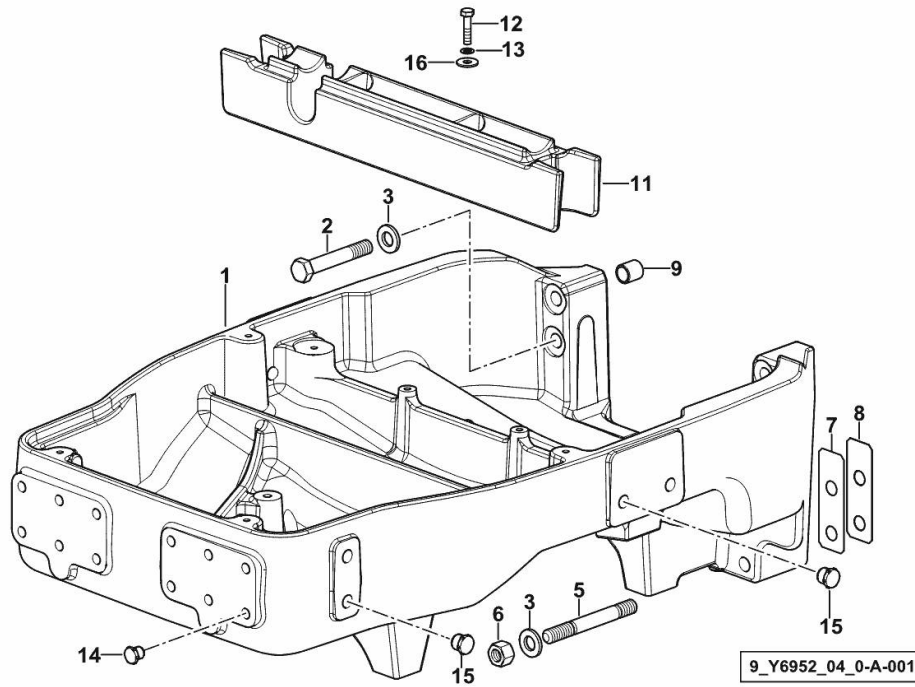
**FRONT SUPPORT**

Fig.	P/n	QTY	Name
------	-----	-----	------

**Notes:**

[XM.K 100 T4i -> ZKDY470200TH10001]

1	0.018.9333.0/10	1	front support
2	2.0113.629.2	4	screw m 16 p.2x100
3	2.1475.206.7	8	washer 17x32
5	2.0443.426.7	4	stud bolt m 16 p.1.5x110
6	2.1012.309.7	4	nut m 16 p.1.5
7	0.019.0152.0	2	shim mm 0.1
8	0.019.0154.0	6	shim mm 0.2
9	2.2680.047.0	2	ring 17x22x23
11	0.019.0178.2	1	gasket
12	2.0112.213.2	2	screw m 8 p.1.25 x 35
13	2.1470.004.2	2	lock washer 8
14	2.3199.360.0	12	plug m 14 p.2
15	2.3199.361.0	8	plug m 18 p.2.5
16	2.1312.004.2	2	washer 8x24x2



**<https://www.ebooklibonline.com>**

Hello dear friend!

Thank you very much for reading.

Enter the link into your browser.

The full manual is available for immediate download.

**<https://www.ebooklibonline.com>**