

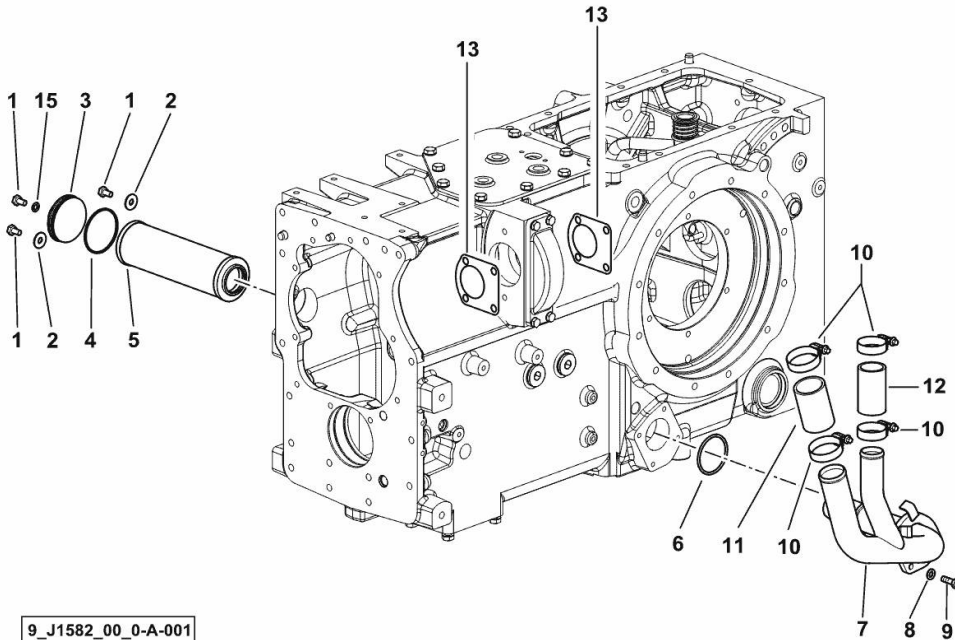
OIL SUCTION

| Fig. | P/n | QTY | Name |
|------|-----|-----|------|
|------|-----|-----|------|

Notes:

- FOR TYPES WITH MECHANICAL REMOTE VALVE CONTROL [XM 130 T4i]

| | | | |
|----|-----------------|---|------------------------|
| 1 | 2.0112.204.2 | 3 | screw m 8 p.1.25x14 |
| 2 | 2.1312.004.3 | 2 | washer 8,4x24x2 |
| 3 | 0.013.8789.0/10 | 1 | cover |
| 4 | 2.1530.157.0 | 1 | oil seal 64.77x2.62 |
| 5 | 2.4419.484.0 | 1 | oil filter |
| 6 | 2.1532.138.0 | 1 | oil seal 55.56x3.53 |
| 7 | 0.015.6599.3 | 1 | tube |
| 8 | 2.1310.004.2 | 3 | flat washer 8.4x17 |
| 9 | 2.0112.209.2 | 3 | screw m 8 p 1.25 x 25 |
| 10 | 2.6851.004.0 | 4 | clamp Ø 32/50 |
| 11 | 2.3213.240.0 | 1 | sleeve |
| 12 | 2.3213.234.0 | 1 | sleeve Ø 34, L 70 |
| 13 | 0.9104.250.0/10 | 2 | gasket |
| 15 | 2.1560.004.0 | 1 | copper gasket 8.2 x 14 |



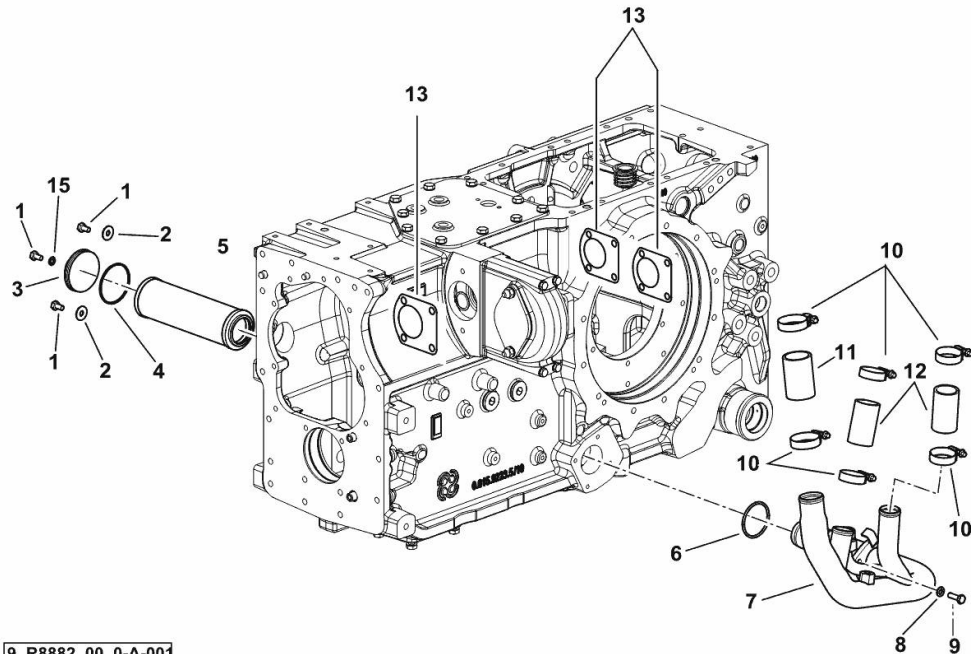
9_J1582_00_0-A-001

OIL SUCTION

| Fig. | P/n | QTY | Name |
|------|-----|-----|------|
|------|-----|-----|------|

Notes:

- FOR TYPES WITH 8-WAY REMOTE VALVE WITH FLOW CONTROL [XM 130 T4i] - FOR TYPES WITH ELECTRICAL REMOTE VALVE CONTROL [XM 130 T4i]



| | | | |
|----|-----------------|---|------------------------|
| 1 | 2.0112.204.2 | 3 | screw m 8 p.1.25x14 |
| 2 | 2.1312.004.3 | 2 | washer 8,4x24x2 |
| 3 | 0.013.8789.0/10 | 1 | cover |
| 4 | 2.1530.157.0 | 1 | oil seal 64.77x2.62 |
| 5 | 2.4419.795.0 | 1 | hydr.oil filter elem. |
| 6 | 2.1532.138.0 | 1 | oil seal 55.56x3.53 |
| 7 | 0.017.5872.3 | 1 | tube |
| 8 | 2.1310.004.2 | 3 | flat washer 8.4x17 |
| 9 | 2.0112.209.2 | 3 | screw m 8 p 1.25 x 25 |
| 10 | 2.6851.004.0 | 4 | clamp Ø 32/50 |
| 11 | 2.3213.240.0 | 1 | sleeve |
| 12 | 2.3213.234.0 | 2 | sleeve Ø 34, L 70 |
| 13 | 0.9104.250.0/10 | 3 | gasket |
| 15 | 2.1560.004.0 | 1 | copper gasket 8.2 x 14 |

9_R8882_00_0-A-001

XM 130 T4i

Section: H0 - HYDRAULIC AND PNEUMATIC SYSTEM|

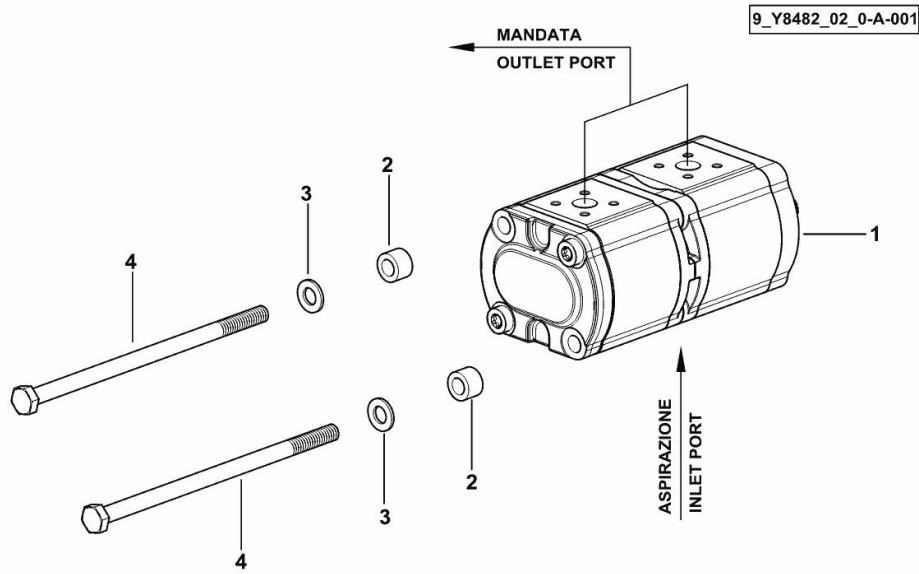
Ref: H0.01.10 (1)

HYDRAULIC PUMP 14 + 11 cm³, dx/rh/re

| Fig. | P/n | QTY | Name |
|------|-----|-----|------|
|------|-----|-----|------|

Notes:
[XM 130 T4i]

| | | | |
|---|--------------|---|--|
| 1 | 2.4539.860.0 | 1 | hydraulic pump 14 + 11 cm ³ , dx/rh/re, (BOSCH) |
| 2 | 2.1549.781.2 | 2 | spacer 10.5x12x18 |
| 3 | 2.1475.003.2 | 2 | washer 10 |
| 4 | 2.0113.346.2 | 2 | screw m 10 p1.5 x 200 |



<https://www.ebooklibonline.com>

Hello dear friend!

Thank you very much for reading.

Enter the link into your browser.

The full manual is available for immediate download.

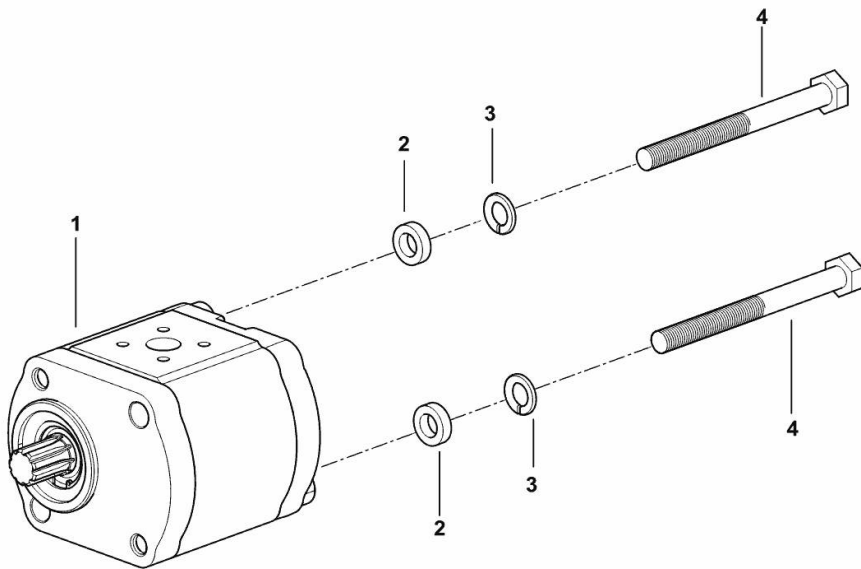
<https://www.ebooklibonline.com>

HYDRAULIC PUMP 14 cc dx/rh/re

| Fig. | P/n | QTY | Name |
|------|-----|-----|------|
|------|-----|-----|------|

Notes:
[XM 130 T4i]

| | | | |
|---|-----------------|---|--|
| 1 | 2.4539.480.0/10 | 1 | hydraulic pump 14 cc dx/rh/re - BOSCH ☞ 2.4539.480.0/10 |
| 2 | 2.1549.321.0 | 2 | spacer 10.5X18X5 |
| 3 | 2.1474.010.2 | 2 | washer 10 |
| 4 | 2.0112.331.2 | 2 | screw m 10 p.1.5x110 |



9_R8982_01_0-A-001

XM 130 T4i

Section: H0 - HYDRAULIC AND PNEUMATIC SYSTEM|

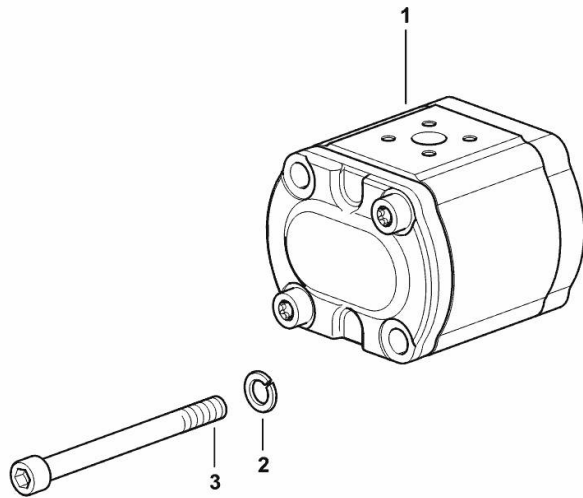
Ref: H0.01.12 (1)

HYDRAULIC PUMP 22.5 cc - dx/rh/re

| Fig. | P/n | QTY | Name |
|------|-----|-----|------|
|------|-----|-----|------|

Notes:
[XM 130 T4i]

| | | | |
|---|-----------------|---|--|
| 1 | 2.4539.620.0/10 | 1 | hydraulic pump 22.5 cc dx/rh/re - BOSCH - ☞ 2.4539.620.0/10 |
| 2 | 2.1480.015.2 | 2 | washer 10 |
| 3 | 2.0169.019.2 | 2 | screw m 10x135 |



9_21082_01_0-A-001

XM 130 T4i

Section: H0 - HYDRAULIC AND PNEUMATIC SYSTEM]

Ref: H0.01.13 (1)

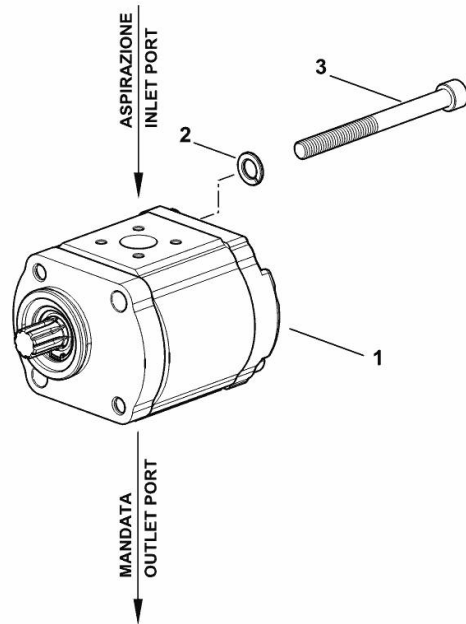
QUIET-RUNNING HYDRAULIC PUMP 16 cm³, sx/lh/li

| Fig. | P/n | QTY | Name |
|------|-----|-----|------|
|------|-----|-----|------|

Notes:
[XM 130 T4i]

| | | | |
|---|--------------|---|---|
| 1 | 2.4539.015.0 | 1 | hydraulic pump 16 cm ³ , sx/lh/li - BOSCH |
| 2 | 2.1474.010.2 | 2 | washer 10 |
| 3 | 2.0312.327.2 | 2 | screw m 10 p.1.5x110 |

9_Y8182_01_0-A-001



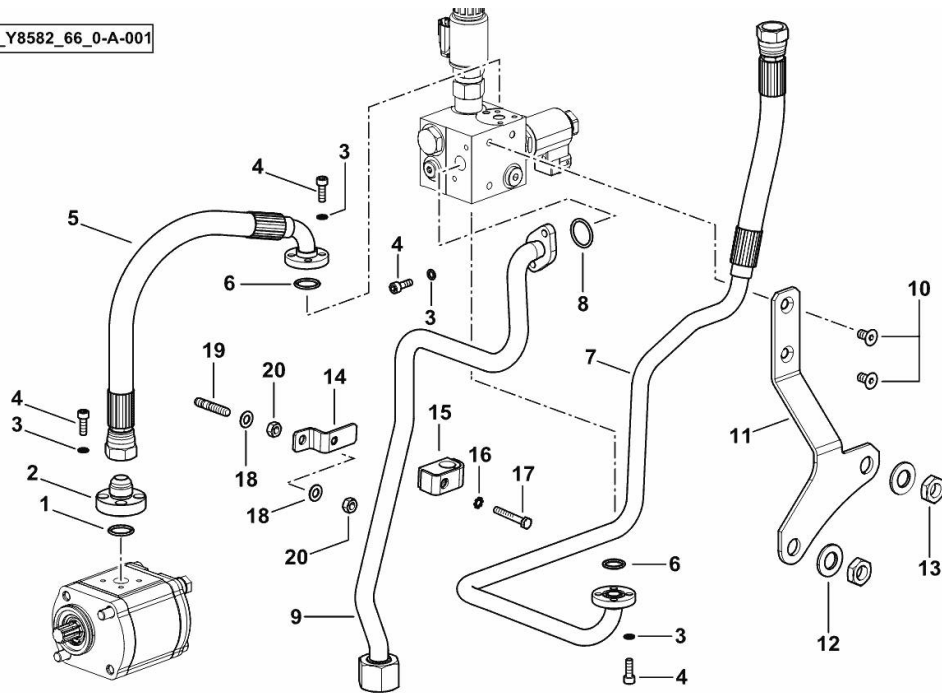
HYDRAULIC SYSTEM

| Fig. | P/n | QTY | Name |
|------|-----|-----|------|
|------|-----|-----|------|

Notes:

- FOR TYPES WITH 8-WAY REMOTE VALVE WITH FLOW CONTROL [XM 130 T4i]

9_Y8582_66_0-A-001



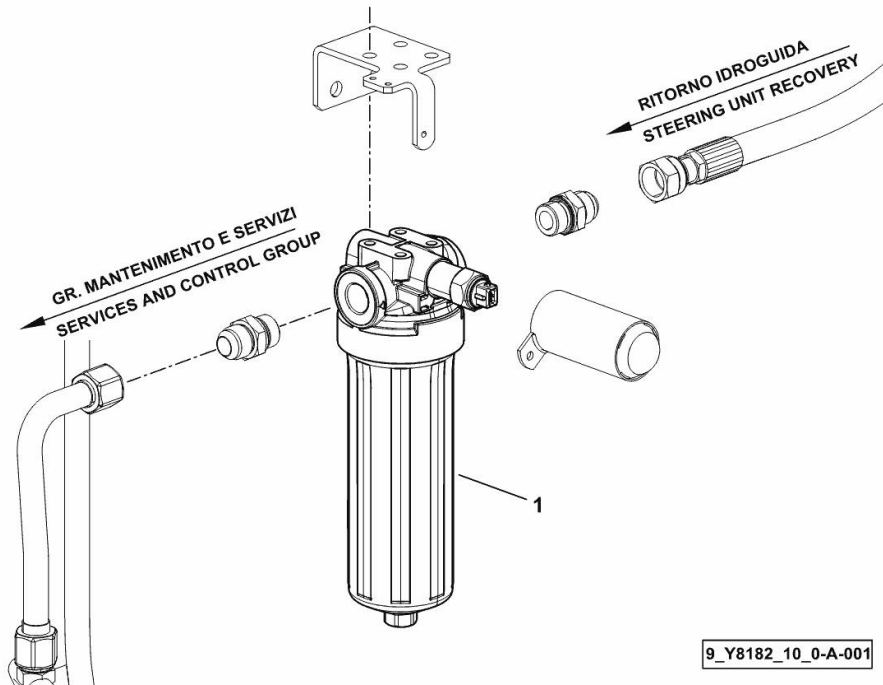
| | | | |
|----|-----------------|----|---------------------------|
| 1 | 2.1531.052.0 | 1 | oil seal 20.29 x 2.62 |
| 2 | 0.010.9142.0/10 | 1 | flange |
| 3 | 2.1480.012.2 | 12 | washer 6, d128 |
| 4 | 2.0312.105.2 | 12 | screw m 6 p.1 x 18 |
| 5 | 0.019.5740.3 | 1 | tube |
| 6 | 2.1531.043.0 | 2 | oil seal 17.13x2.62 |
| 7 | 0.019.5376.3 | 1 | tube |
| 8 | 2.1531.062.0 | 1 | oil seal 23.81 x 2.62 |
| 9 | 0.019.5391.3 | 1 | tube |
| 10 | 2.0342.303.6 | 2 | screw m 8 p. 1.25x16 |
| 11 | 0.019.5710.0 | 1 | bracket |
| 12 | 2.1310.009.2 | 2 | flat washer 15x20 |
| 13 | 2.1011.508.2 | 2 | nut m 14 p.1.5 |
| 14 | 0.020.0426.3 | 1 | bracket |
| 15 | 2.3320.108.0 | 1 | terminal |
| 16 | 2.1470.002.2 | 1 | lock washer 6 |
| 17 | 2.0112.015.2 | 1 | screw m 6 p.1x40 |
| 18 | 2.1310.004.2 | 2 | flat washer 8.4x17 |
| 19 | 2.0422.207.2 | 1 | stud bolt m 8 p 1.25 x 30 |
| 20 | 2.1011.105.2 | 2 | nut m 8 p.1.25 |

OIL PRESSURE LINE FILTER

| Fig. | P/n | QTY | Name |
|------|-----|-----|------|
|------|-----|-----|------|

Notes:
[XM 130 T4i]

| | | | |
|---|--------------|---|---------------------------------|
| 1 | 2.4419.813.0 | 1 | oil filter 9" ☞ 2.4419.813.0 |
|---|--------------|---|---------------------------------|



XM 130 T4i

Section: H0 - HYDRAULIC AND PNEUMATIC SYSTEM|

Ref: H0.01.17 (1)

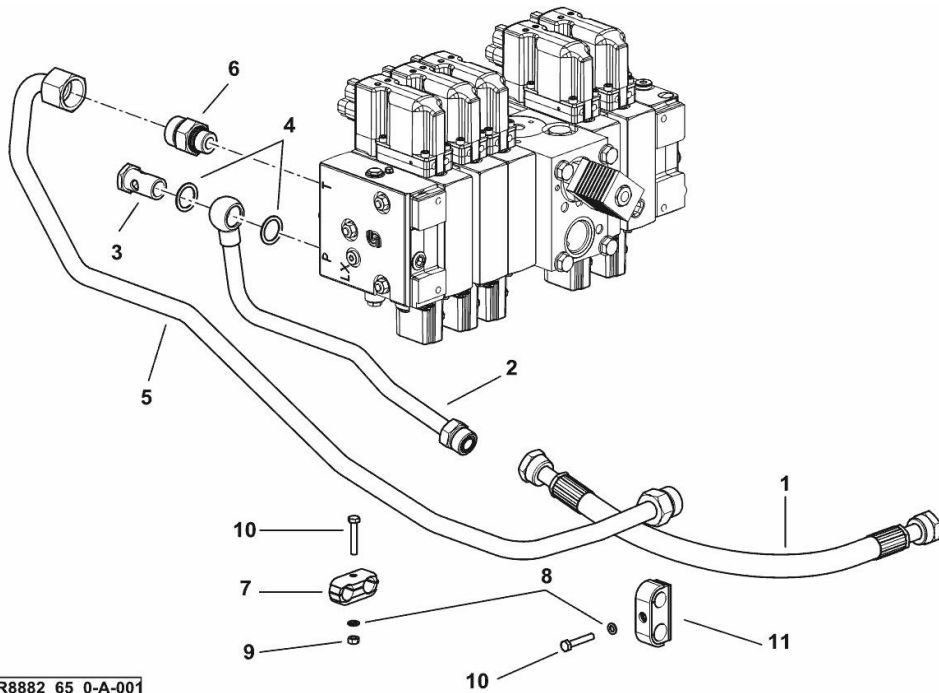
HYDRAULIC SYSTEM FOR SECOND PUMP

| Fig. | P/n | QTY | Name |
|------|-----|-----|------|
|------|-----|-----|------|

Notes:

- FOR TYPES WITH ELECTRICAL REMOTE VALVE CONTROL [XM 130 T4i]

| | | | |
|----|--------------|---|----------------------------|
| 1 | 0.017.8992.3 | 1 | tube |
| 2 | 0.017.8991.3 | 1 | tube |
| 3 | 2.3335.009.2 | 1 | pipe union m 22 p.1.5 x 39 |
| 4 | 2.1560.018.0 | 2 | gasket 22.2 x 29 |
| 5 | 0.017.8993.3 | 1 | tube |
| 6 | 2.3275.016.0 | 1 | pipe fitting m 22 |
| 7 | 2.3321.020.0 | 1 | collar Ø 16/16 |
| 8 | 2.1470.002.2 | 2 | lock washer 6 |
| 9 | 2.1011.103.2 | 1 | nut m 6 p.1 |
| 10 | 2.0112.013.2 | 2 | screw m 6 p.1 x 35 |
| 11 | 2.3320.217.0 | 1 | collar Ø 16/18 |



9_R8882_65_0-A-001

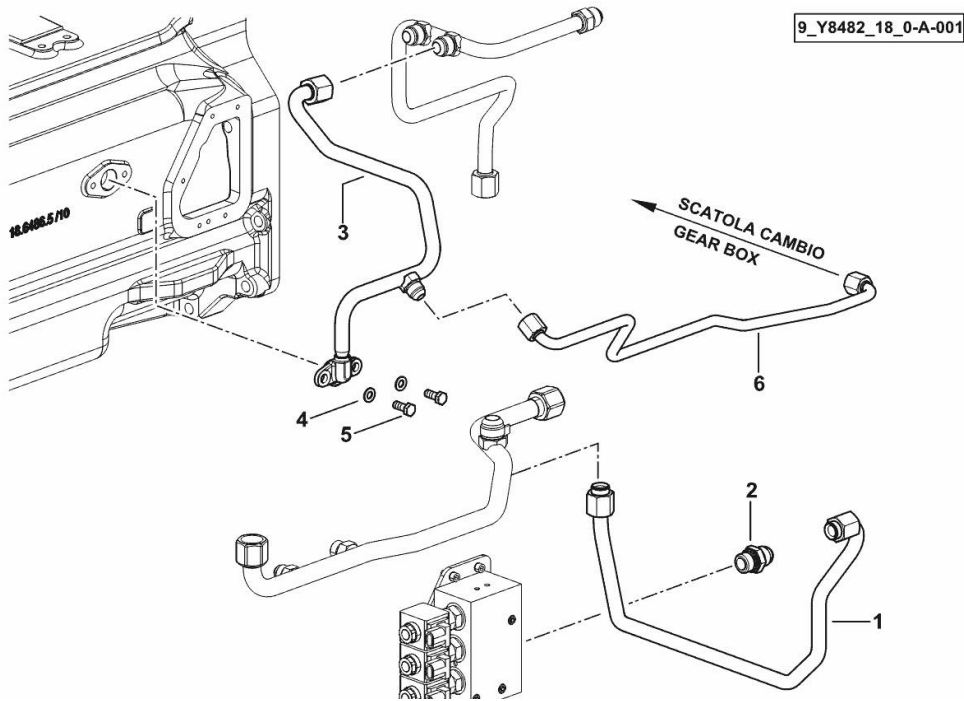
HYDRAULIC SYSTEM PARTS KIT H-M-L

| Fig. | P/n | QTY | Name |
|------|-----|-----|------|
|------|-----|-----|------|

Notes:

- POWERSHIFT [XM 130 T4i]

| | | | |
|---|-----------------|---|------------------------------|
| 1 | 0.019.3782.3 | 1 | tube |
| 2 | 2.3249.173.2 | 1 | pipe fitting M/M 7/8 JIC-M22 |
| 3 | 0.019.3783.3/10 | 1 | tube |
| 4 | 2.1310.004.2 | 2 | flat washer 8.4x17 |
| 5 | 2.0112.207.2 | 2 | screw m 8 p 1.25 x 20 |
| 6 | 0.020.0667.3 | 1 | tube |



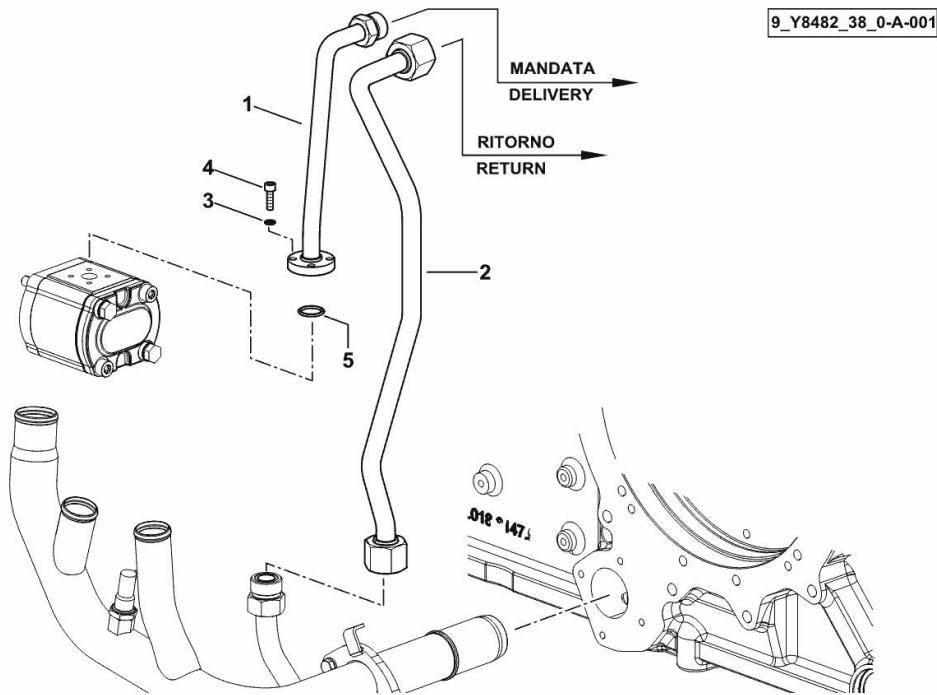
HYDRAULIC SYSTEM PARTS KIT

| Fig. | P/n | QTY | Name |
|------|-----|-----|------|
|------|-----|-----|------|

Notes:

- FOR TYPES WITH ELECTRICAL REMOTE VALVE CONTROL [XM 130 T4i]

| | | | |
|---|--------------|---|-----------------------|
| 1 | 0.017.8994.3 | 1 | tube - DELIVERY |
| 2 | 0.019.5678.3 | 1 | tube - RETURN |
| 3 | 2.1480.012.2 | 4 | washer 6, d128 |
| 4 | 2.0312.106.2 | 4 | screw m 6 p.1 x 20 |
| 5 | 2.1531.052.0 | 1 | oil seal 20.29 x 2.62 |

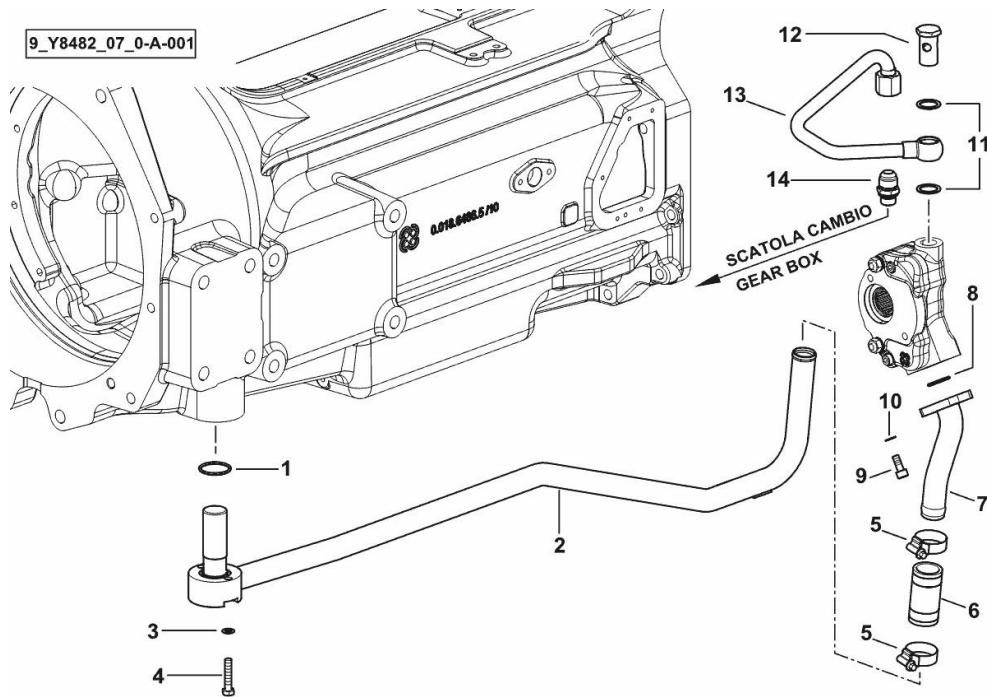


OIL TRANSFER PUMP HYDRAULIC SYSTEM

| Fig. | P/n | QTY | Name |
|------|-----|-----|------|
|------|-----|-----|------|

Notes:
[XM 130 T4i]

| | | | |
|----|--------------|---|----------------------------|
| 1 | 2.1531.091.0 | 1 | oil seal 34.60 x 2.62 |
| 2 | 0.018.6201.3 | 1 | tube |
| 3 | 2.1470.004.2 | 2 | lock washer 8 |
| 4 | 2.0112.215.2 | 2 | screw m 8 p.1.25 x 40 |
| 5 | 2.6851.004.0 | 2 | clamp Ø 32/50 |
| 6 | 2.3213.228.0 | 1 | sleeve |
| 7 | 0.015.6617.3 | 1 | tube |
| 8 | 2.1531.062.0 | 1 | oil seal 23.81 x 2.62 |
| 9 | 2.0312.206.2 | 2 | screw m 8 p 1.25 x 20 |
| 10 | 2.1480.014.2 | 2 | washer 8 |
| 11 | 2.1560.018.0 | 2 | gasket 22.2 x 29 |
| 12 | 2.3335.009.2 | 1 | pipe union m 22 p.1.5 x 39 |
| 13 | 0.015.1335.3 | 1 | tube |
| 14 | 2.3249.141.2 | 1 | pipe fitting 7/8 JIC-M18 |



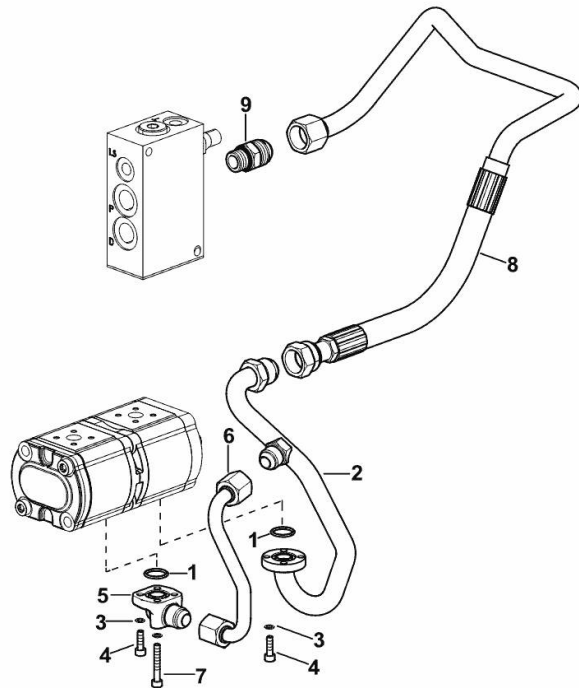
FRONT SUSPENSION DELIVERY LINE

| Fig. | P/n | QTY | Name |
|------|-----|-----|------|
|------|-----|-----|------|

Notes:

- 60 LT [XM 130 T4i]

| | | | |
|---|--------------|---|-----------------------|
| 1 | 2.1531.052.0 | 2 | oil seal 20.29 x 2.62 |
| 2 | 0.019.1172.3 | 1 | tube |
| 3 | 2.1480.012.2 | 8 | washer 6, d128 |
| 4 | 2.0312.106.2 | 6 | screw m 6 p.1 x 20 |
| 5 | 0.008.9626.0 | 1 | pipe fitting |
| 6 | 0.019.1173.3 | 1 | tube |
| 7 | 2.0312.114.2 | 2 | screw m 6 p.1x40 |
| 8 | 0.020.2663.3 | 1 | tube |
| 9 | 2.3249.158.2 | 1 | pipe fitting |



9_AG982_49_0-A-001

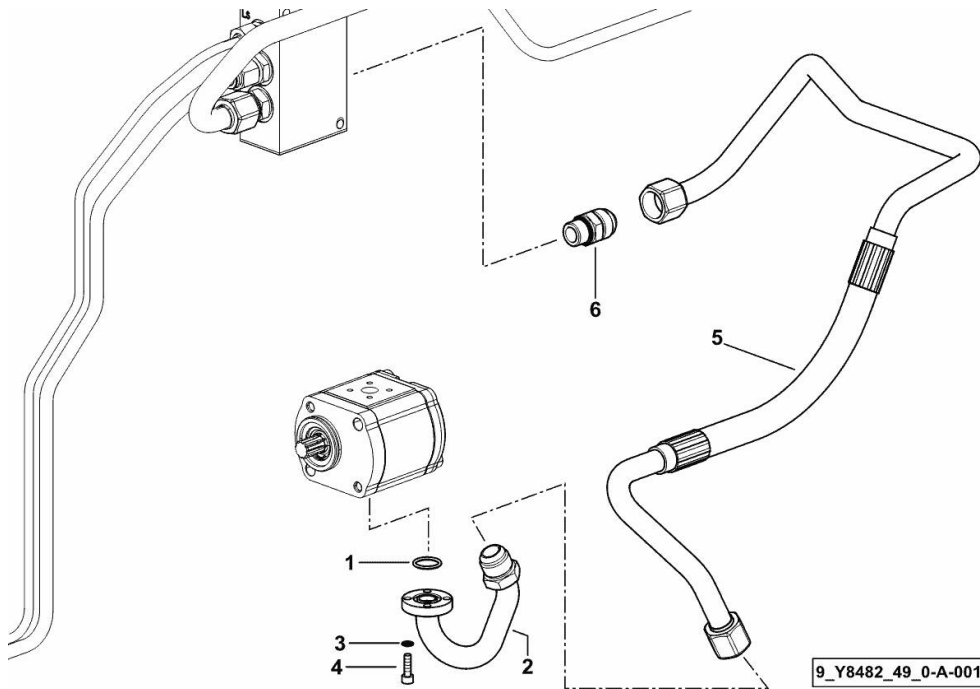
FRONT SUSPENSION DELIVERY LINE

| Fig. | P/n | QTY | Name |
|------|-----|-----|------|
|------|-----|-----|------|

Notes:

- 60 LT ECO [XM 130 T4i]

| | | | |
|---|--------------|---|-----------------------|
| 1 | 2.1531.052.0 | 1 | oil seal 20.29 x 2.62 |
| 2 | 0.015.1442.3 | 1 | tube |
| 3 | 2.1480.012.2 | 4 | washer 6, d128 |
| 4 | 2.0312.106.2 | 4 | screw m 6 p.1 x 20 |
| 5 | 0.019.1206.3 | 1 | tube |
| 6 | 2.3249.158.2 | 1 | pipe fitting |





Suggest:

For more complete manuals. Please go to the home page.

<https://www.ebooklibonline.com>

If the above button click is invalid. Please download this document first, and then click the above link to download the complete manual.

Thank you so much for reading

XM 130 T4i

Section: H0 - HYDRAULIC AND PNEUMATIC SYSTEM|

Ref: H0.01.23 (1)

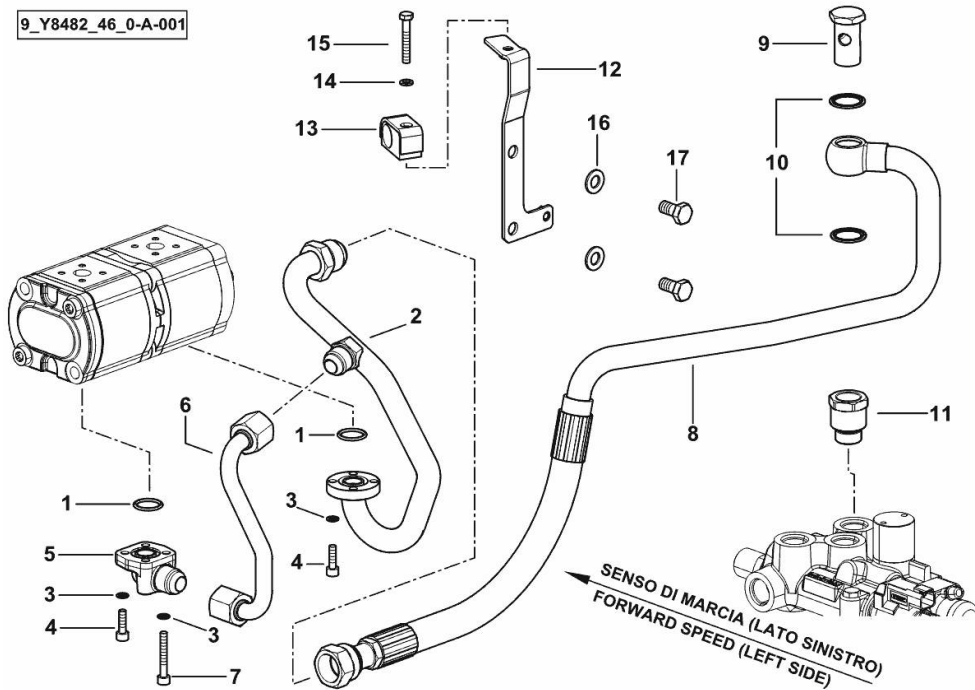
SYSTEM FROM HYDRAULIC PUMP TO HYDRAULIC BRAKES

| Fig. | P/n | QTY | Name |
|------|-----|-----|------|
|------|-----|-----|------|

Notes:

- 60 LT [XM 130 T4i]

9_Y8482_46_0-A-001



| | | | |
|----|--------------|---|----------------------------|
| 1 | 2.1531.052.0 | 2 | oil seal 20.29 x 2.62 |
| 2 | 0.019.1172.3 | 1 | tube |
| 3 | 2.1480.012.2 | 8 | washer 6, d128 |
| 4 | 2.0312.106.2 | 6 | screw m 6 p.1 x 20 |
| 5 | 0.008.9626.0 | 1 | pipe fitting |
| 6 | 0.019.1173.3 | 1 | tube |
| 7 | 2.0312.114.2 | 2 | screw m 6 p.1x40 |
| 8 | 0.019.3768.3 | 1 | tube |
| 9 | 2.3335.009.2 | 1 | pipe union m 22 p.1.5 x 39 |
| 10 | 2.1561.112.0 | 2 | gasket Ø 22 -B- |
| 11 | 2.3249.465.2 | 1 | pipe fitting m 22 p.1.5 |
| 12 | 0.019.8951.3 | 1 | bracket |
| 13 | 2.3320.111.0 | 1 | terminal Ø 20 |
| 14 | 2.1470.002.2 | 1 | lock washer 6 |
| 15 | 2.0112.015.2 | 1 | screw m 6 p.1x40 |
| 16 | 2.1475.003.2 | 2 | washer 10 |
| 17 | 2.0113.307.2 | 2 | screw m 10 p 1.5 x 20 |

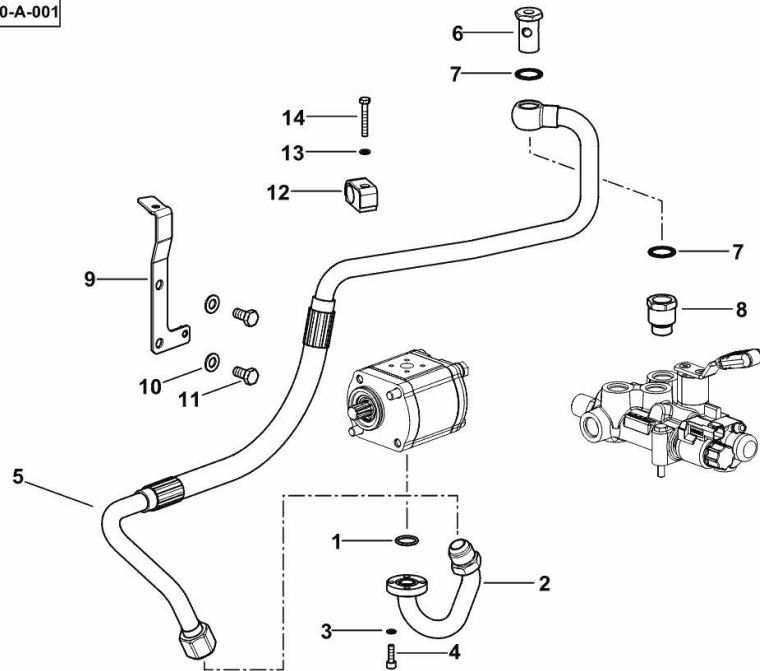
XM 130 T4i

Section: H0 - HYDRAULIC AND PNEUMATIC SYSTEM|

Ref: H0.01.24 (1)

SYSTEM FROM HYDRAULIC PUMP TO HYDRAULIC BRAKES

9_Y8282_46_0-A-001



| Fig. | P/n | QTY | Name |
|------|-----|-----|------|
|------|-----|-----|------|

Notes:

- 90 LT [XM 130 T4i]

| | | | |
|----|--------------|---|----------------------------|
| 1 | 2.1531.052.0 | 1 | oil seal 20.29 x 2.62 |
| 2 | 0.015.1442.3 | 1 | tube |
| 3 | 2.1480.012.2 | 4 | washer 6, d128 |
| 4 | 2.0312.106.2 | 4 | screw m 6 p.1 x 20 |
| 5 | 0.017.8368.3 | 1 | tube |
| 6 | 2.3335.009.2 | 1 | pipe union m 22 p.1.5 x 39 |
| 7 | 2.1561.112.0 | 2 | gasket Ø 22 -B- |
| 8 | 2.3249.465.2 | 1 | pipe fitting m 22 p.1.5 |
| 9 | 0.019.8951.3 | 1 | bracket |
| 10 | 2.1475.003.2 | 2 | washer 10 |
| 11 | 2.0112.307.2 | 2 | screw m 10 p.1.5 x 20 |
| 12 | 2.3320.111.0 | 1 | terminal Ø 20 |
| 13 | 2.1470.002.2 | 1 | lock washer 6 |
| 14 | 2.0112.015.2 | 1 | screw m 6 p.1x40 |

<https://www.ebooklibonline.com>

Hello dear friend!

Thank you very much for reading.

Enter the link into your browser.

The full manual is available for immediate download.

<https://www.ebooklibonline.com>