

XM 120 T4i HI-LEVEL -> ZKDY8702W0TH10001

Section: E0 - REAR AXLE

Ref: E0.01.6 (1)

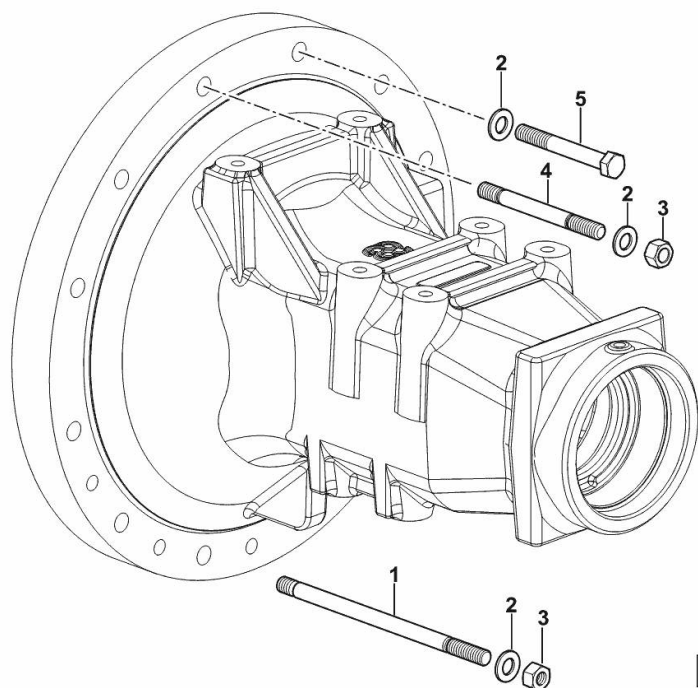
REAR AXLE - MOUNTINGS SX/LH/LI - DX/RH/RE

Fig.	P/n	QTY	Name
------	-----	-----	------

Notes:

[XM 120 T4i HI-LEVEL -> ZKDY8702W0TH10001]

1	2.0439.218.7/40	12	stud bolt m 14 p1.5 x 251
2	2.1475.005.7	24	washer 14
3	2.1012.408.7	18	nut m 14 p.1.5
4	2.0443.327.2	6	stud bolt m 14 x 120
5	2.0113.531.7	6	screw m 14 p.2x110



9\_Y8544\_31\_0-A-001

**XM 120 T4i HI-LEVEL -> ZKDY8702W0TH10001**

Section: E0 - REAR AXLE

Ref: E0.01.8 (1)

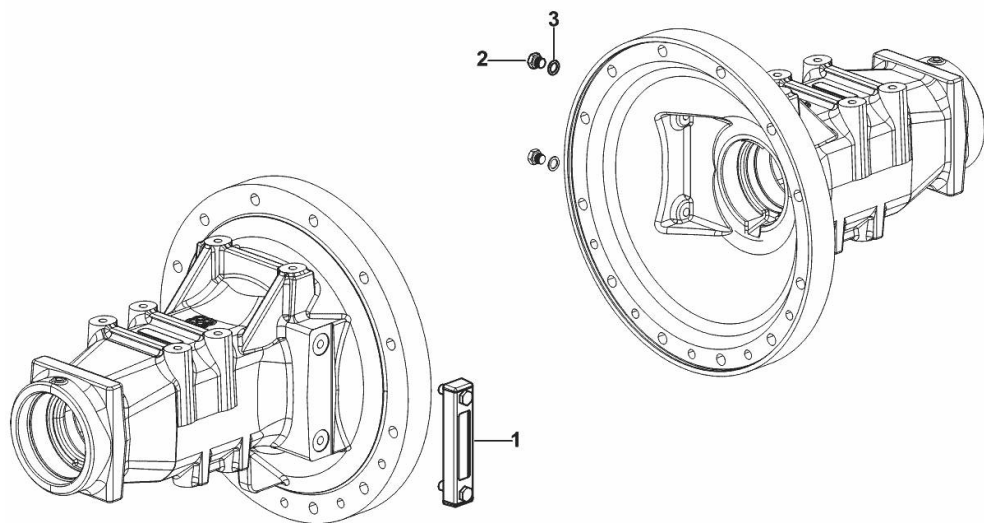
**OIL LEVEL INDICATOR**

Fig.	P/n	QTY	Name
------	-----	-----	------

**Notes:**

[XM 120 T4i HI-LEVEL -> ZKDY8702W0TH10001]

1	0.015.8160.0	1	level indicator
2	2.3110.302.2	2	plug m 12 p.1.75 x 10
3	2.1560.008.0	2	gasket 12.2 x 18



9\_Y8544\_32\_0-A-001

XM 120 T4i HI-LEVEL -> ZKDY8702W0TH10001

Section: E0 - REAR AXLE

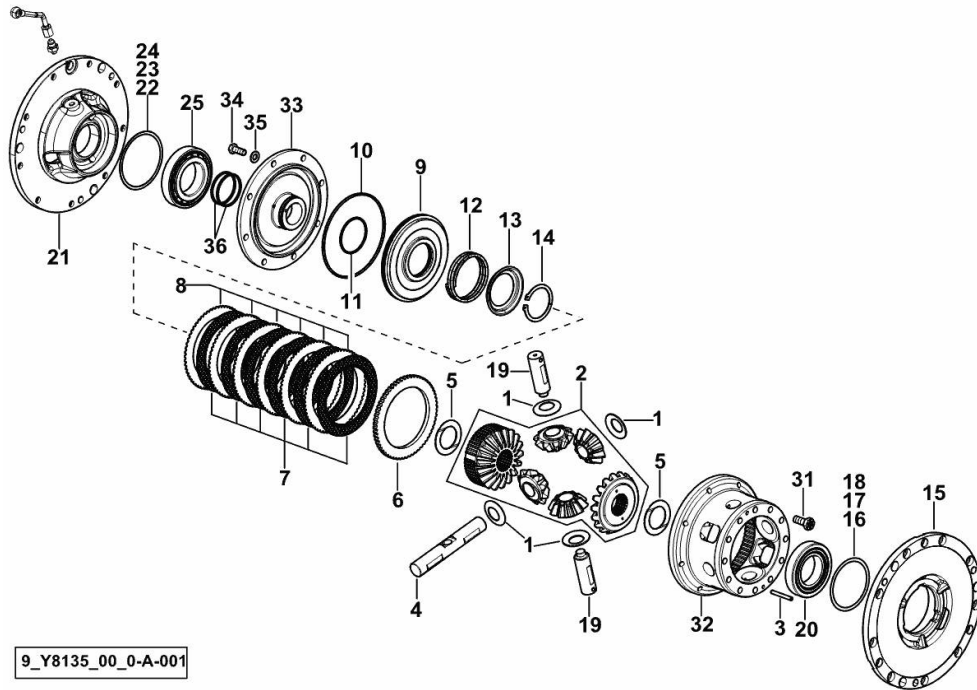
Ref: E0.02.1 (1)

4-PLANET PINION DIFFERENTIAL

Fig.	P/n	QTY	Name
------	-----	-----	------

Notes:

[XM 120 T4i HI-LEVEL -> ZKDY8702W0TH10001]



9\_Y8135\_00\_0-A-001

1	0.157.3550.0	4	shoulder ring
2	0.011.7161.3	1	crown wheel
3	2.1631.519.0	2	roll pin 6x50
4	0.010.0614.0/10	1	pin
5	2.1599.427.0/10	2	shoulder ring 42x64x0.3
6	0.008.5908.0	1	spacer
7	0.010.5034.2	6	disc mm 2.50
8	0.010.0711.0	6	disc mm 1.75
9	0.010.4853.0/10	1	piston
10	2.1539.094.0	1	special oil seal 151.99x3.53
11	0.005.8281.0	1	oil seal 61.6x2.62
12	0.008.4346.2	1	spring
13	0.008.4344.0	1	cup
14	2.1410.024.1	1	circlip Ø 60 mm
15	0.015.2833.0/20	1	flange sx/lh/li
16	2.1580.319.0	5	shim 86x98x0.5
17	2.1580.320.0	2	shim 86x98x0.2
18	2.1580.321.0	2	shim 86x98x0.05
19	0.010.0613.0	2	pin
20	2.2520.012.0	1	roller bearing iso 55 kb 02
21	0.015.6692.0/10	1	flange
22	2.1580.305.0	2	shim 97x108x0.2
23	2.1580.306.0	2	shim 97x108x0.5
24	2.1580.312.0	2	shim 97x108x0.05
25	2.2520.013.0	1	roller bearing iso 60 kb 02
31	2.0129.028.2	12	screw m 12 p.1.25x30
32	0.010.0549.0/20	1	differential carrier
33	0.008.5909.3/30	1	cover
34	2.0112.309.2	8	screw m 10 p.1.5 x 25
35	2.1475.003.2	8	washer 10
36	0.164.3646.0	2	piston ring

**<https://www.ebooklibonline.com>**

Hello dear friend!

Thank you very much for reading.

Enter the link into your browser.

The full manual is available for immediate download.

**<https://www.ebooklibonline.com>**

**XM 120 T4i HI-LEVEL -> ZKDY8702W0TH10001**

Section: E0 - REAR AXLE

Ref: E0.02.2 (1)

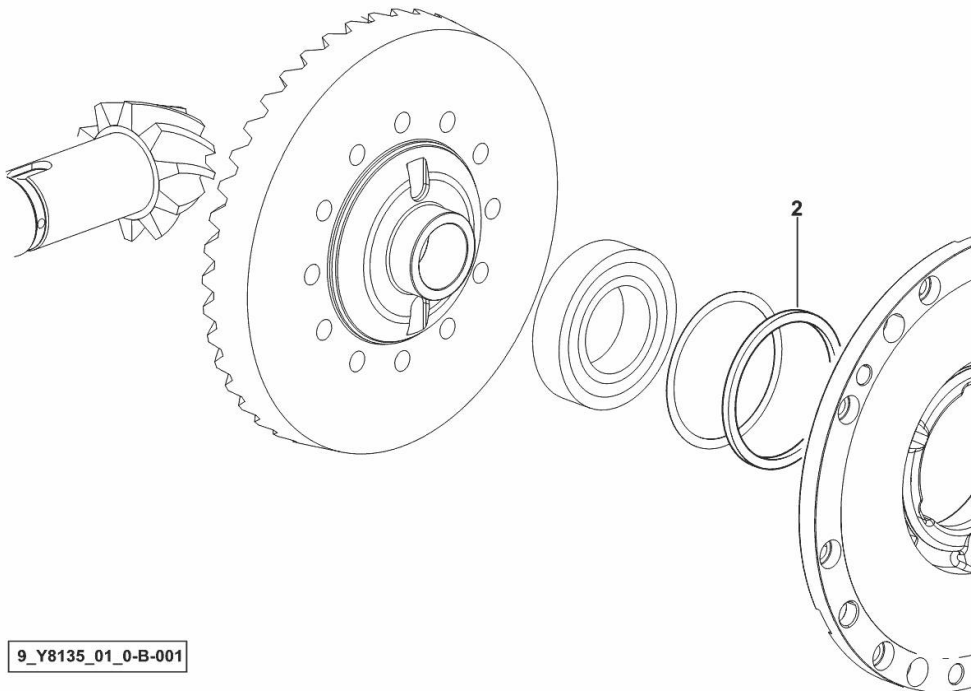
**SEPARATOR 86x98x5**

Fig.	P/n	QTY	Name
------	-----	-----	------

**Notes:**

[XM 120 T4i HI-LEVEL -> ZKDY8702W0TH10001]

2	2.1599.543.0	1	spacer 86x98x5
---	--------------	---	----------------



**XM 120 T4i HI-LEVEL -> ZKDY8702W0TH10001**

Section: E0 - REAR AXLE

Ref: E0.02.4 (1)

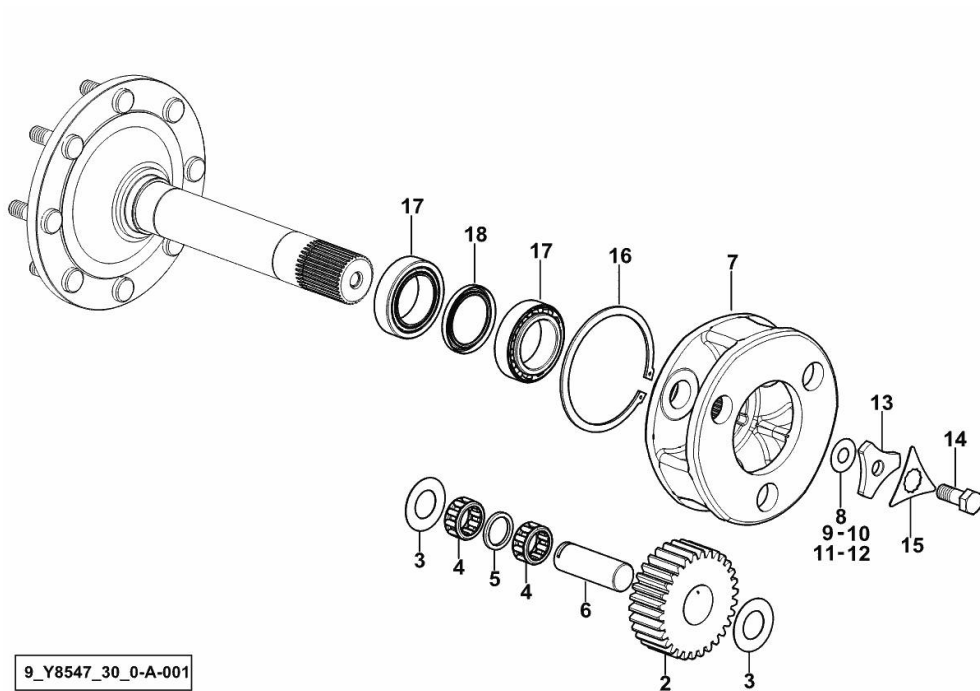
**REAR FINAL DRIVES SX/LH/LI - DX/RH/RE**

Fig.	P/n	QTY	Name
------	-----	-----	------

**Notes:**

[XM 120 T4i HI-LEVEL -> ZKDY8702W0TH10001]

2	0.008.5626.0	6	planet gear
3	2.1599.218.0	12	shoulder ring 40.2x75x1.5
4	2.2999.274.0	12	roller cage 40x56x25.8
5	2.1549.140.0	6	spacer 40.2x52x5
6	0.008.5622.0	6	pin
7	0.008.5627.0/50	2	spider
8	2.1589.588.0	4	shim mm 1.0
9	2.1589.589.0	2	shim mm 0.5
10	2.1589.590.0	2	shim mm 0.2
11	2.1589.591.0	2	shim mm 0.15
12	2.1589.592.0	2	shim mm 0.1
13	0.015.9507.0/10	2	washer
14	2.0139.044.7	2	screw m 20 p.1.5x50
15	0.015.9531.0/10	2	lock-tab
16	2.1410.052.1	2	circlip 160
17	2.2999.227.0	4	special bearing 70x110x31
18	2.1529.091.0	2	special oil seal 70x95x10



9\_Y8547\_30\_0-A-001

**XM 120 T4i HI-LEVEL -> ZKDY8702W0TH10001**

Section: E0 - REAR AXLE

Ref: E0.02.6 (1)

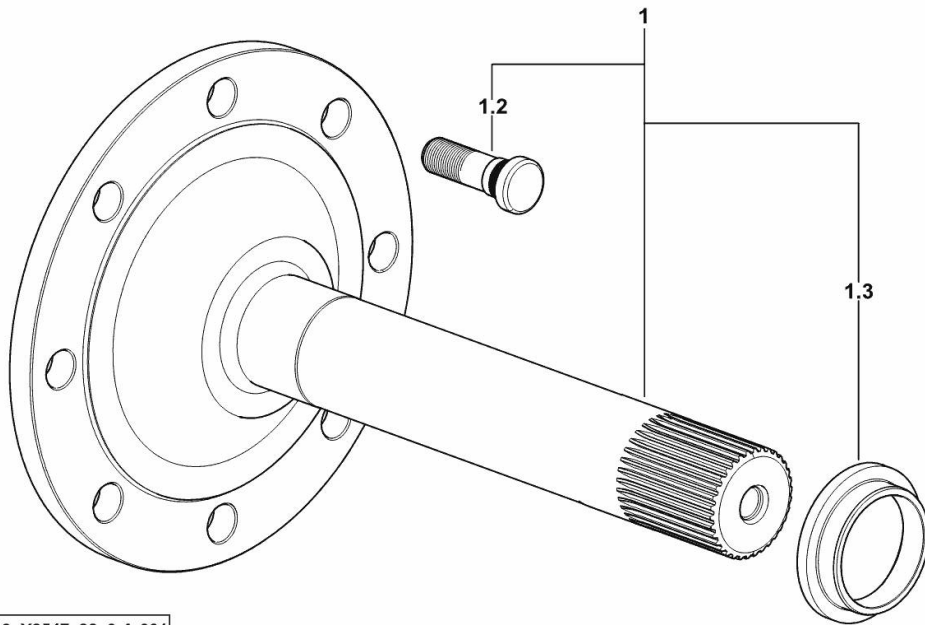
**REAR HALF-SHAFTS SX/LH/LI - DX/RH/RE**

Fig.	P/n	QTY	Name
------	-----	-----	------

**Notes:**

[XM 120 T4i HI-LEVEL -> ZKDY8702W0TH10001]

1	0.018.8191.3/20	2	half-shaft
1.2	0.009.3545.0	8	small column m 22 p.1.5x70
1.3	0.008.4226.0/10	1	spacer



9\_Y8547\_32\_0-A-001

**XM 120 T4i HI-LEVEL -> ZKDY8702W0TH10001**

Section: E0 - REAR AXLE

Ref: E0.02.7 (1)

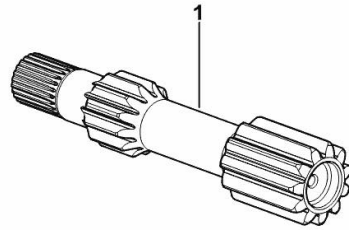
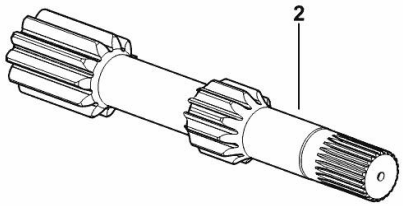
**REAR HALF-SHAFTS SX/LH/LI - DX/RH/RE**

Fig.	P/n	QTY	Name
------	-----	-----	------

**Notes:**

[XM 120 T4i HI-LEVEL -> ZKDY8702W0TH10001]

1	0.015.9539.0/10	1	half-shaft sx/lh/li
2	0.015.9489.0/10	1	half-shaft dx/rh/re



9\_Y8547\_31\_0-A-001

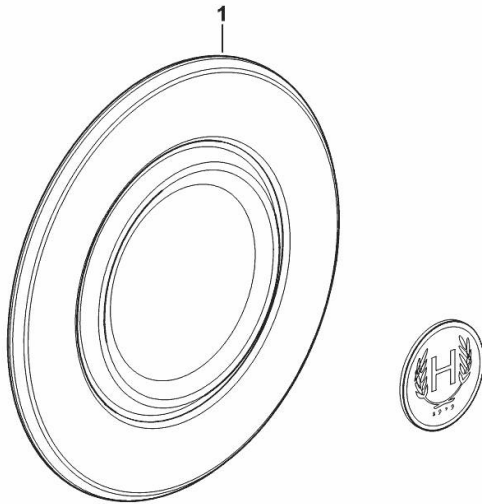
**REAR WHEEL HUB COVER**

Fig.	P/n	QTY	Name
------	-----	-----	------

**Notes:**

[XM 120 T4i HI-LEVEL -> ZKDY8702W0TH10001]

1	0.019.4341.3/10	4	cover
---	-----------------	---	-------



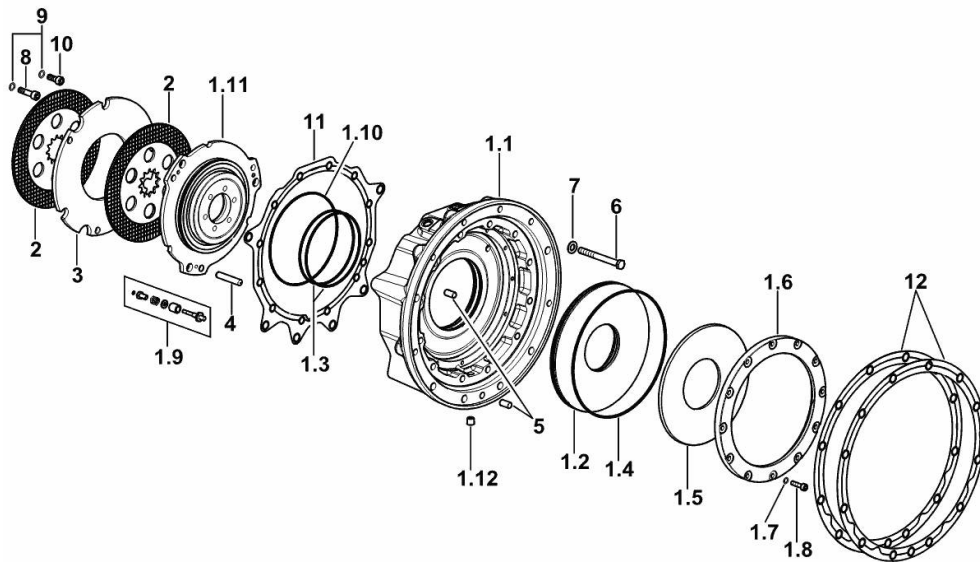
9\_Y7546\_10\_0-B-001

XM 120 T4i HI-LEVEL -> ZKDY8702W0TH10001

Section: E0 - REAR AXLE

Ref: E0.03.3 (1)

**REAR BRAKES WITH 0.55 mm WEAR ADJUSTMENT**



9\_Y8554\_30\_0-A-001

Fig.	P/n	QTY	Name
------	-----	-----	------

Notes:

[XM 120 T4i HI-LEVEL -> ZKDY8702W0TH10001]

1.1	0.018.7823.0/30	2	flange SX/LH/LI - DX/RH/RE
1.2	0.018.9211.0	1	piston
1.3	2.1532.253.0	2	oil seal 148.82x3.53
1.4	2.1532.308.0	1	oil seal 253.59x3.53
1.5	2.1499.244.0	1	spring 250x105
1.6	0.015.2815.0/10	1	ring
1.7	2.1480.014.2	12	washer 8
1.8	2.0314.210.2	12	screw m 8 x 30
1.9	0.018.7891.4	3	device
1.10	2.1532.279.0	1	oil seal 183.74x3.53
1.11	0.015.2798.0/30	1	piston
1.12	2.3130.002.7	1	plug 1/4" gas
2	0.016.3140.2	4	brake disc D=243
3	0.015.2805.0/20	2	spacer
4	2.1655.617.0	6	pin 12x65
5	2.1655.608.0	4	pin 12 x 24
6	2.0112.433.2	24	screw m 12 p.1.75x120
7	2.1475.004.2	24	spring washer 12
8	2.0312.314.2	2	screw m 10 p.1.5 x 40
9	2.1480.015.2	18	washer 10
10	2.0312.308.2	10	screw m 10 p.1.5 x 25
11	0.018.5939.0	2	gasket
12	0.018.6334.0	4	gasket

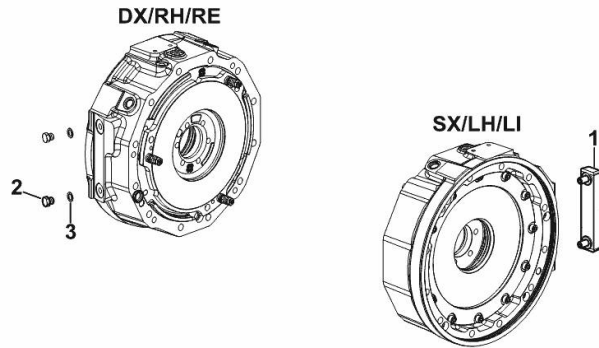
**OIL LEVEL INDICATOR**

Fig.	P/n	QTY	Name
------	-----	-----	------

**Notes:**

[XM 120 T4i HI-LEVEL -> ZKDY8702W0TH10001]

1	0.015.8160.0	1	level indicator
2	2.3110.302.2	2	plug m 12 p.1.75 x 10
3	2.1560.008.0	2	gasket 12.2 x 18



9\_Y8544\_32\_0-B-001

**XM 120 T4i HI-LEVEL -> ZKDY8702W0TH10001**

Section: E0 - REAR AXLE

Ref: E0.03.5 (1)

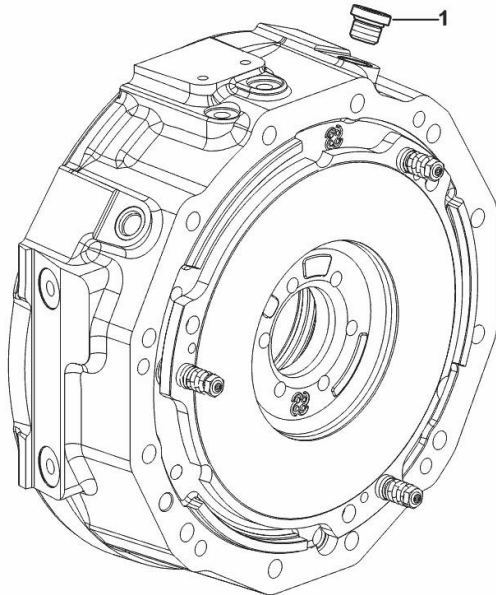
**PLUG**

Fig.	P/n	QTY	Name
------	-----	-----	------

**Notes:**

[XM 120 T4i HI-LEVEL -> ZKDY8702W0TH10001]

1	2.3121.005.2	2	plug m 16 p.1.5
---	--------------	---	-----------------



9\_L8066\_32\_0-A-001

**XM 120 T4i HI-LEVEL -> ZKDY8702W0TH10001**

Section: F0 - FRONT AXLE

Ref: F0.01.0 (1)

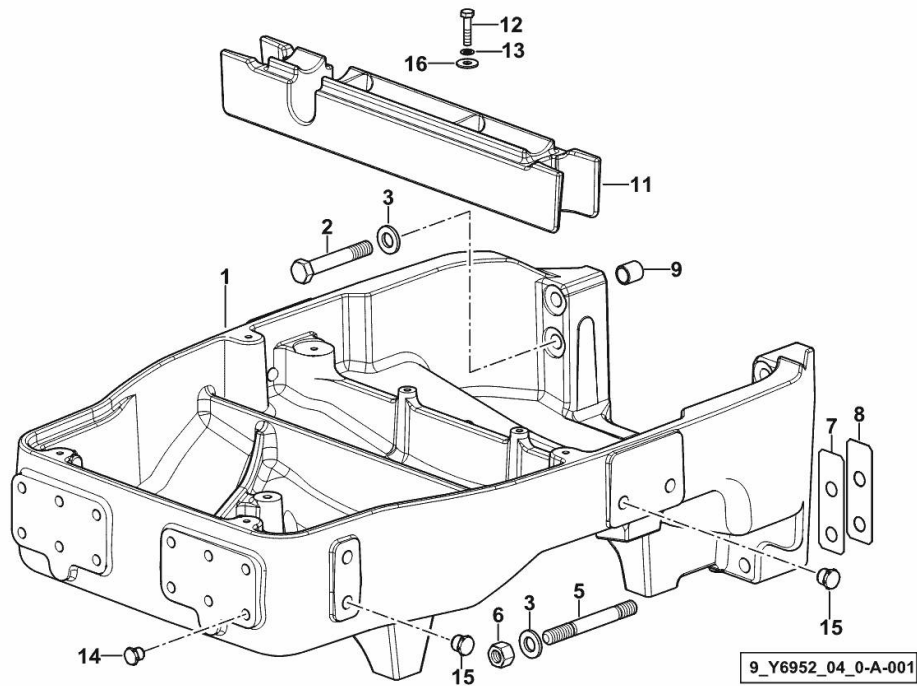
**FRONT SUPPORT**

Fig.	P/n	QTY	Name
------	-----	-----	------

**Notes:**

- FOR TYPES WITHOUT FRONT PTO AND FRONT LIFT [XM 120 T4i HI-LEVEL -> ZKDY8702W0TH10001]

1	0.018.9333.0/10	1	front support
2	2.0113.629.2	4	screw m 16 p.2x100
3	2.1475.206.7	8	washer 17x32
5	2.0443.426.7	4	stud bolt m 16 p.1.5x110
6	2.1012.309.7	4	nut m 16 p.1.5
7	0.019.0152.0	2	shim mm 0.1
8	0.019.0154.0	6	shim mm 0.2
9	2.2680.047.0	2	ring 17x22x23
11	0.019.0178.2	1	gasket
12	2.0112.213.2	2	screw m 8 p.1.25 x 35
13	2.1470.004.2	2	lock washer 8
14	2.3199.360.0	12	plug m 14 p.2
15	2.3199.361.0	8	plug m 18 p.2.5
16	2.1312.004.2	2	washer 8x24x2



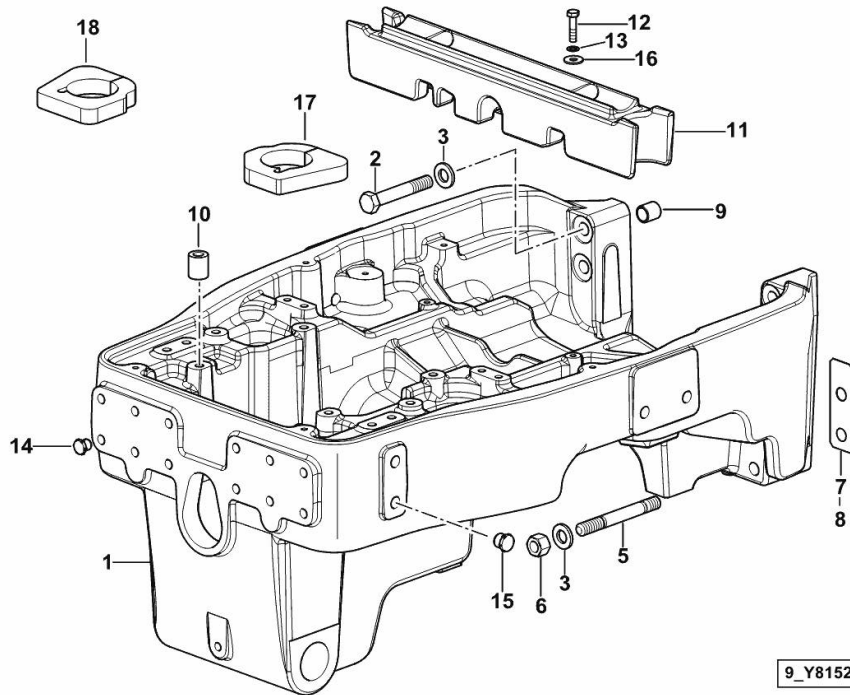
**FRONT SUPPORT**

Fig.	P/n	QTY	Name
------	-----	-----	------

**Notes:**

- FOR TYPES W/ OR W/ PROVISION FOR FRONT LIFT/FRONT PTO [XM 120 T4i HI-LEVEL -> ZKDY8702W0TH10001]

1	0.018.9315.0/20	1	front support
2	2.0113.629.2	4	screw m 16 p.2x100
3	2.1475.206.7	8	washer 17x32
5	2.0443.426.7	4	stud bolt m 16 p.1.5x110
6	2.1012.309.7	4	nut m 16 p.1.5
7	0.019.0152.0	2	shim mm 0.1
8	0.019.0154.0	6	shim mm 0.2
9	2.2680.047.0	2	ring 17x22x23
10	2.1579.820.2	4	spacer 13x25x30
11	0.018.9833.2	1	gasket
12	2.0112.213.2	2	screw m 8 p.1.25 x 35
13	2.1470.004.2	2	lock washer 8
14	2.3199.360.0	12	plug m 14 p.2
15	2.3199.361.0	8	plug m 18 p.2.5
16	2.1312.004.2	2	washer 8x24x2
17	0.020.2981.0	1	dust guard sx/lh/li
18	0.020.2982.0	1	dust guard dx/rh/re





**Suggest:**

**For more complete manuals. Please go to the home page.**

**<https://www.ebooklibonline.com>**

**If the above button click is invalid. Please download this document first, and then click the above link to download the complete manual.**

**Thank you so much for reading**

**XM 120 T4i HI-LEVEL -> ZKDY8702W0TH10001**

Section: F0 - FRONT AXLE

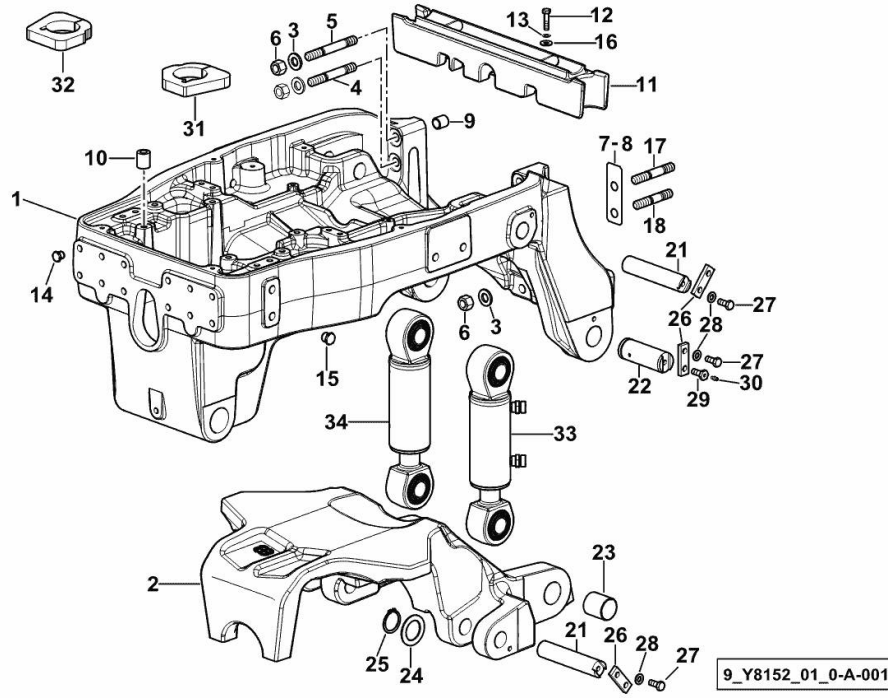
Ref: F0.01.2 (2)

**FRONT CARRIER WITH SUSPENSION**

Fig.	P/n	QTY	Name
------	-----	-----	------

**Notes:**

- FOR TYPES W/ OR W/ PROVISION FOR FRONT LIFT/FRONT PTO [XM 120 T4i HI-LEVEL -> ZKDY8702W0TH10001]



1	0.018.9317.0/20	1	front support
2	0.018.9302.0/10	1	support
3	2.1475.206.7	8	washer 17x32
4	2.0443.423.7	2	stud bolt m 16 p.1.5x90
5	2.0443.425.7	2	stud bolt m 16 p.1.5 x 100
6	2.1012.309.7	8	nut m 16 p.1.5
7	0.019.0152.0	2	shim mm 0.1
8	0.019.0154.0	6	shim mm 0.2
9	2.2680.047.0	2	ring 17x22x23
10	2.1579.820.2	4	spacer 13x25x30
11	0.018.9833.2	1	gasket
12	2.0112.213.2	2	screw m 8 p.1.25 x 35
13	2.1470.004.2	2	lock washer 8
14	2.3199.360.0	12	plug m 14 p.2
15	2.3199.361.0	8	plug m 18 p.2.5
16	2.1312.004.2	2	washer 8x24x2
17	2.0443.420.7	2	stud bolt m 16 p.1.5 x 75
18	2.0443.418.7	2	stud bolt m 16 p.1.5 x 65
21	0.015.3715.0/10	4	pin
22	04438671	2	pin
23	04424134/20	2	bushing
24	04438682	2	ring
25	2.1410.016.7	2	circlip 40x1.75
26	04422768	6	small plate
27	2.0112.309.2	10	screw m 10 p.1.5 x 25
28	2.1310.006.2	10	flat washer 10.5x21
29	04450386/20	2	screw m 10 x 25
30	2.3820.101.2	2	grease gun m 6 p.1 x 5
31	0.020.2981.0	1	dust guard sx/lh/li
32	0.020.2982.0	1	dust guard dx/rh/re
33	2.3749.015.0	1	jack sx/lh/li - Ognibene ☞ 2.3749.015.0
34	2.3749.016.0	1	jack dx/rh/re - Ognibene ☞ 2.3749.016.0

**XM 120 T4i HI-LEVEL -> ZKDY8702W0TH10001**

Section: F0 - FRONT AXLE

Ref: F0.01.3 (1)

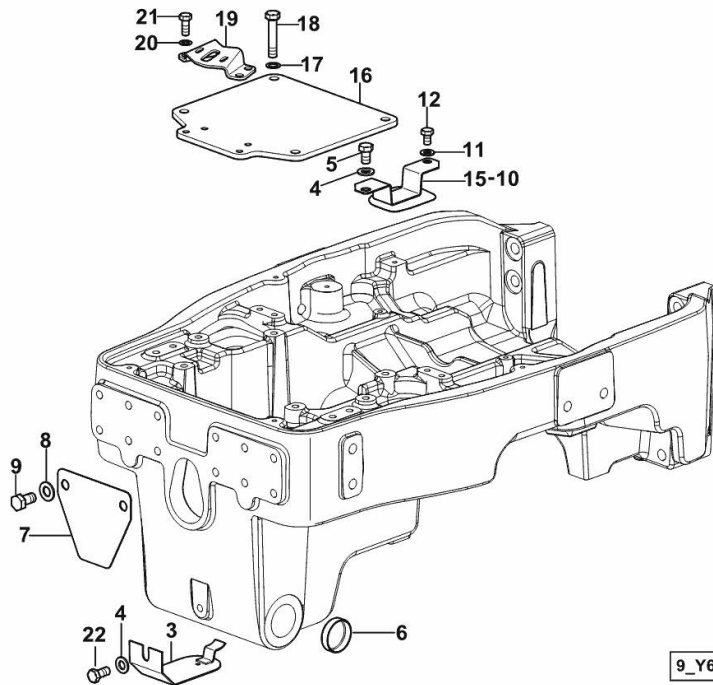
**COMPLETION - WITHOUT FRONT PTO**

Fig.	P/n	QTY	Name
------	-----	-----	------

**Notes:**

- FOR TYPES W/O FRONT LIFT BUT WITH PROVISION FOR FRONT LIFT INSTALLATION [XM 120 T4i HI-LEVEL -> ZKDY8702W0TH10001] - FOR TYPES WITH SPENDED AXLE AND WITHOUT FRONT LIFT [XM 120 T4i HI-LEVEL -> ZKDY8702W0TH10001]

3	0.011.0753.2/20	1	plug
4	2.1310.007.2	3	flat washer 13 x 24
5	2.0112.407.2	2	screw m 12 p.1.75 x 20
6	2.3171.019.4	2	plug 50
7	0.019.0338.0/10	1	plug
8	2.1310.009.2	2	flat washer 15x20
9	2.0112.509.2	2	screw m 14 p.1.5x25
10	0.011.2616.2/20	1	shield dx/rh/re
11	2.1310.006.2	2	flat washer 10.5x21
12	2.0112.305.2	2	screw m 10 p.1.5 x 16
15	0.011.2615.2/20	1	shield sx/lh/li
16	0.019.0325.0/20	1	plate
17	2.1470.007.2	4	lock washer 12
18	2.0112.421.2	4	screw m 12 p.1.75 x 60
19	0.019.1504.0/10	1	support
20	2.1470.006.2	4	lock washer 10
21	2.0112.309.2	4	screw m 10 p.1.5 x 25
22	2.0122.459.6	1	screw m 12 p.1.25x25



9\_Y6952\_06\_0-A-001

**<https://www.ebooklibonline.com>**

Hello dear friend!

Thank you very much for reading.

Enter the link into your browser.

The full manual is available for immediate download.

**<https://www.ebooklibonline.com>**