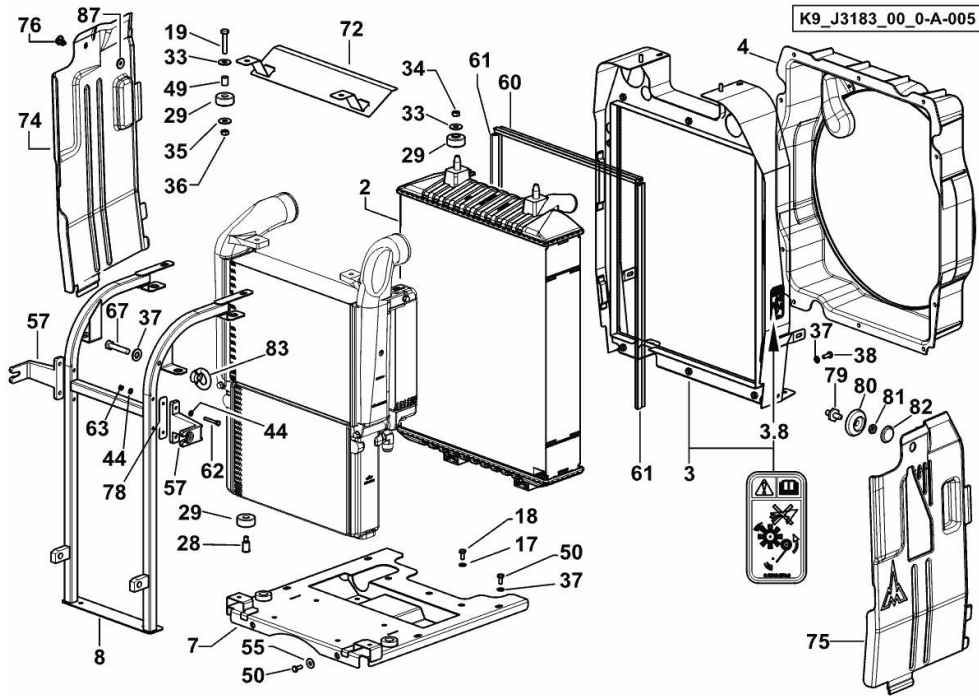


**COOLING SYSTEM**

Fig.	P/n	QTY	Name
------	-----	-----	------

**Notes:**

[XL 185 DCR HI-LEVEL -> 20001]



2	0.015.2547.2/20	1	water cooler
3	0.015.2709.4/60	1	division
3.8	2.9939.273.0	2	plate
4	0.015.2742.3/60	1	duct
7	0.015.2627.3/40	1	support
8	0.015.1744.2/30	1	chassis frame
17	2.1310.007.2	3	flat washer 13 x 24
18	2.0114.409.2	3	screw m 12 x 25
19	2.0112.320.2	2	screw m 10 p.1.5 x 55
28	04431909/10	4	pin
29	0.007.0675.0	8	silent-block
33	2.1312.005.2	6	washer 10.2
34	2.1011.106.2	8	nut m 10 p.1.5
35	2.1312.004.3	2	washer 8,4x24x2
36	2.1011.105.2	3	nut m 8 p.1.25
37	2.1310.004.2	22	flat washer 8.4x17
38	2.0112.207.2	11	screw m 8 p 1.25 x 20
44	2.1310.002.2	12	flat washer 6.4x12.5
49	2.1579.012.2/10	2	spacer 10.5X16X20
50	2.0112.209.2	4	screw m 8 p 1.25 x 25
55	2.1312.004.2	4	washer 8x24x2
57	0.015.7089.0/20	2	bracket
60	0.015.7884.0	1	gasket
61	0.015.7885.0	2	gasket
62	2.0112.017.2	4	screw m 6 p.1x45
63	2.1011.103.2	4	nut m 6 p.1
67	2.0112.213.2	1	screw m 8 p.1.25 x 35
72	0.015.8039.3	1	division
74	0.015.9410.0/10	1	division dx/rh/re
75	0.015.9409.0/20	1	division sx/lh/li
76	0.016.7924.4	1	pin
78	0.016.0765.0	4	spacer
79	2.0439.302.2	1	stud bolt
80	04411716	1	washer
81	2.1011.205.2	1	nut m 8 p.1.25
82	04413793	1	cap
83	0.016.3348.2	1	eyebolt m 8 p.1.25
87	04422851	1	washer

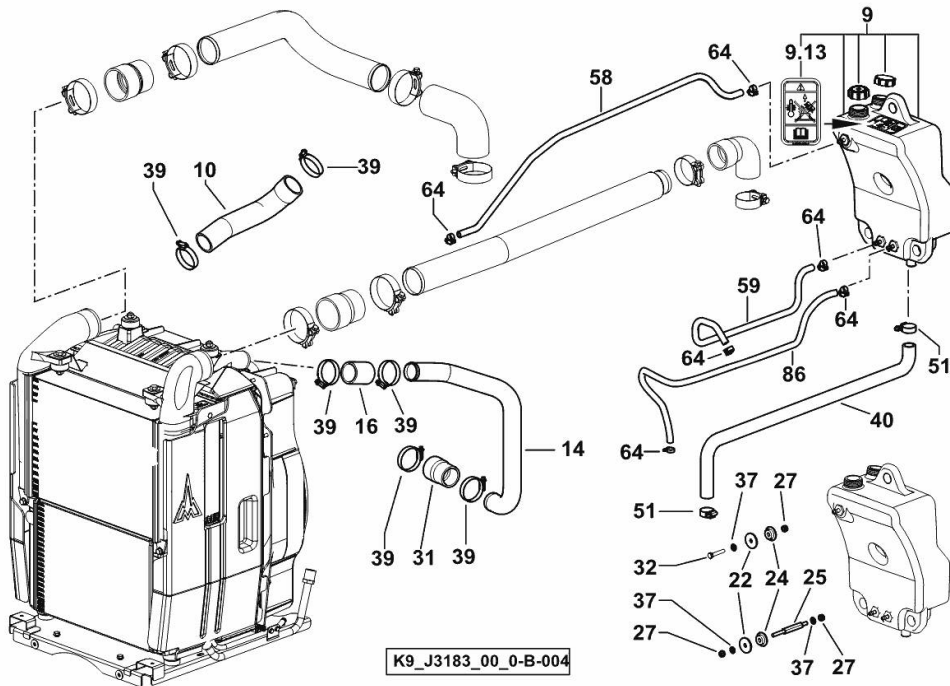
**COOLING SYSTEM**

Fig.	P/n	QTY	Name
------	-----	-----	------

**Notes:**

[XL 185 DCR HI-LEVEL -> 20001]

9	0.015.3493.4/30	1	small tank ☞ 0.015.3493.4/30
9.13	2.9939.280.0	1	plate
10	0.015.7305.0	1	sleeve
14	0.015.7303.3	1	tube
16	0.015.7302.0	1	sleeve
22	03392102	3	washer
24	04432147	3	ring
25	0.015.3967.0/10	2	spacer
27	2.1120.105.2	5	self-locking nut m 8 p.1.25
31	0.015.7304.0	1	sleeve
32	2.0112.217.2	1	screw m 8 p.1.25 x 45
37	2.1310.004.2	22	flat washer 8.4x17
39	2.6859.158.0	6	clamp Ø 50/70
40	0.015.2966.0/10	1	tube
51	2.6851.003.0	2	clamp Ø 25/40
58	0.015.7799.0/10	1	tube
59	0.016.2272.0/10	1	tube Ø mm 8x14x660
64	2.6851.018.0	4	clamp Ø11/17
64	2.6857.019.0	6	clamp 14
86	0.017.5786.0	1	tube Ø mm 8x14x990

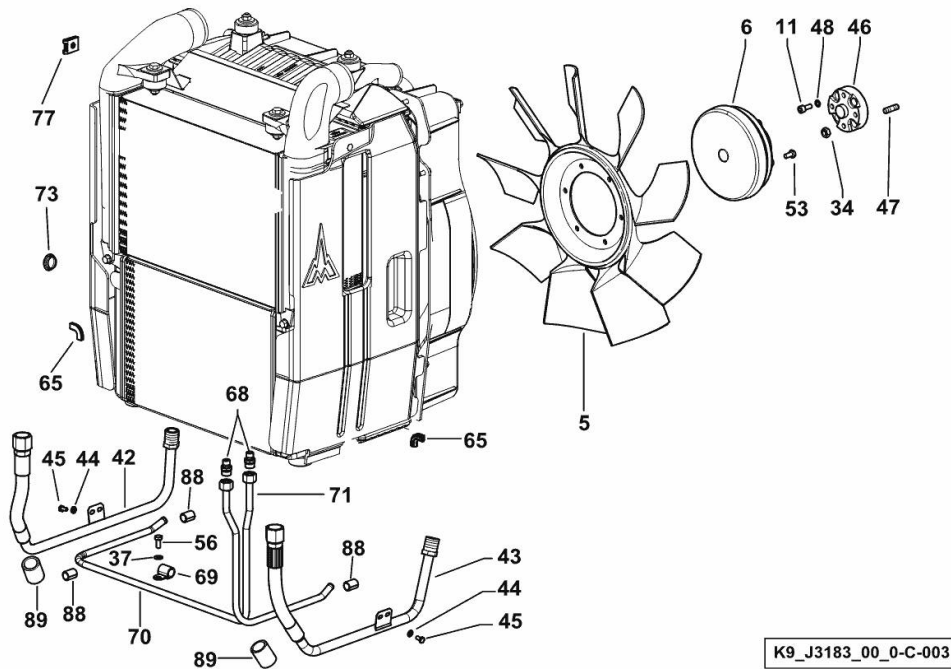


**COOLING SYSTEM**

Fig.	P/n	QTY	Name
------	-----	-----	------

**Notes:**

[XL 185 DCR HI-LEVEL -> 20001]



5	0.016.0823.4	1	fan
6	0.016.0824.4	1	joint
11	2.0312.208.2	4	screw m 8 p.1.25 x 25
34	2.1011.106.2	8	nut m 10 p.1.5
37	2.1310.004.2	22	flat washer 8.4x17
42	0.015.6284.3	1	tube
43	0.015.6283.3/10	1	tube
44	2.1310.002.2	12	flat washer 6.4x12.5
45	2.0112.003.2	4	screw m 6 p.1 x 12
46	0.016.2886.0/30	1	spacer
47	2.0422.303.7	4	stud bolt m 10 p.1.5 x 20
48	2.1480.014.2	4	washer 8
53	2.0112.205.2	6	screw m 8 p.1.25 x 16
56	2.0112.206.2	4	screw m 8 p.1.25 x 18
65	0.015.7918.0	2	gasket
68	04453868	2	pipe fitting m 14 p.1.5
69	2.6839.055.0	2	clamp Ø 11 / 20
70	0.015.8011.3	1	tube
71	0.015.8010.3	1	tube
73	2.3199.113.0	1	plug 31.5x8.5
77	0.013.7330.0	1	special nut
88	02382224	3	sleeve 12
89	02382225	2	sleeve

K9\_J3183\_00\_0-C-003

**<https://www.ebooklibonline.com>**

Hello dear friend!

Thank you very much for reading.

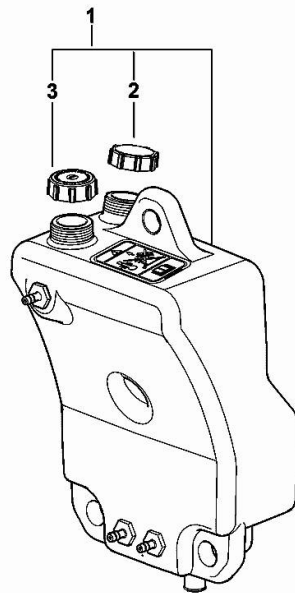
Enter the link into your browser.

The full manual is available for immediate download.

**<https://www.ebooklibonline.com>**

**WATER TANK**

Fig.	P/n	QTY	Name
1	0.015.3493.4/30	1	small tank
2	0.900.1169.2	1	cap CLOSED
3	0.900.1169.3	1	cap OPENING 1 BAR



0.015.3493.4/30

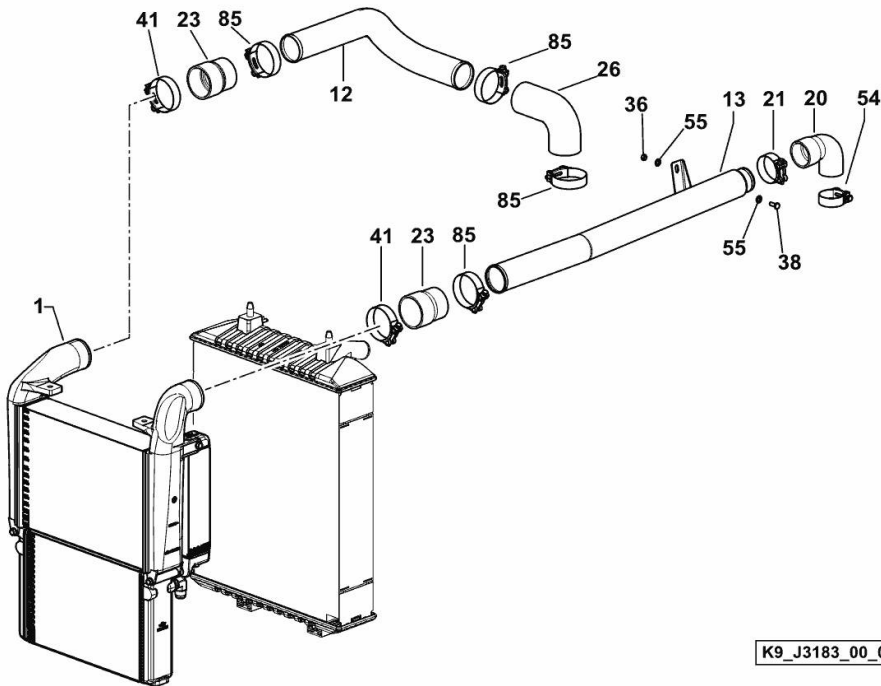
**INTERCOOLER - GEARBOX OIL RADIATOR - FUEL RADIATOR**

Fig.	P/n	QTY	Name
------	-----	-----	------

**Notes:**

[XL 185 DCR HI-LEVEL -> 20001]

1	0.015.2736.2/20	1	intercooler ☞ 0.015.2736.2/20
12	0.015.1739.0/20	1	tube
13	0.015.7421.2/10	1	tube
20	0.015.7422.0	1	sleeve
21	2.6859.165.2	1	clamp Ø 66/72
23	0.015.1736.0/10	2	sleeve
26	0.015.1735.0/10	1	sleeve
36	2.1011.105.2	3	nut m 8 p.1.25
38	2.0112.207.2	11	screw m 8 p 1.25 x 20
41	2.6859.111.0	2	clamp Ø 80-85
54	2.6859.146.0/10	1	clamp
55	2.1312.004.2	4	washer 8x24x2
85	2.6859.145.2	4	clamp 73/79



K9\_J3183\_00\_0-D-002

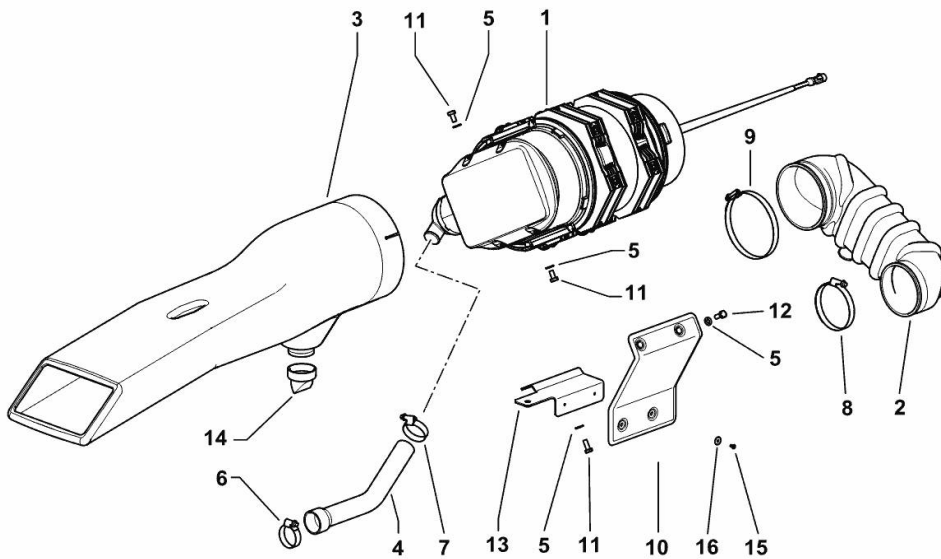
**FUEL SUPPLY - AIR FILTER**

Fig.	P/n	QTY	Name
------	-----	-----	------

**Notes:**

[XL 185 DCR HI-LEVEL -> 20001]

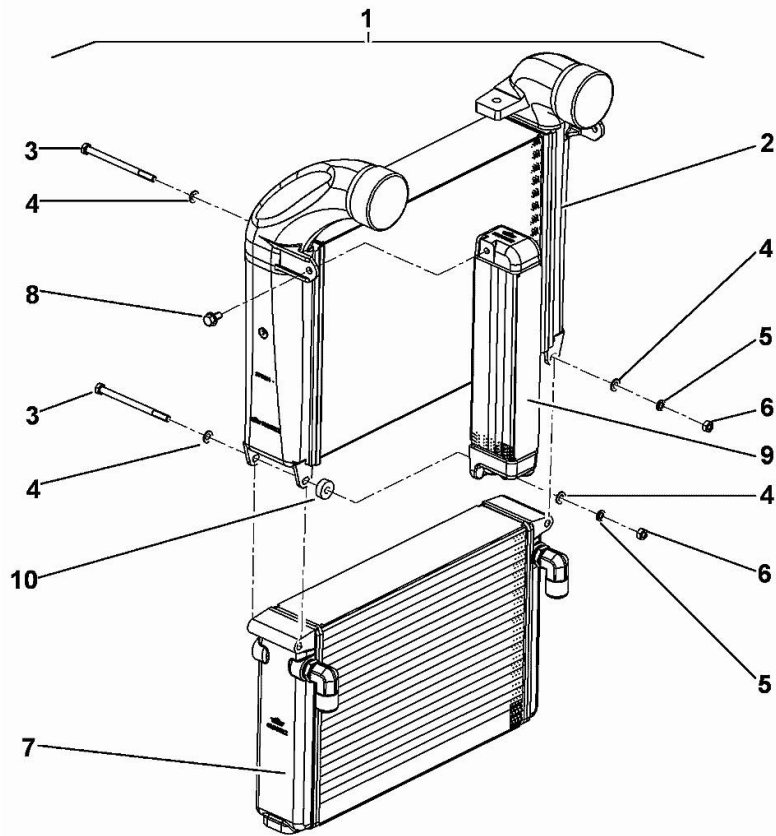
1	2.4249.722.0	1	air filter ☞ 2.4249.722.0
2	0.015.2352.0/20	1	sleeve
3	0.015.2351.0/20	1	duct
4	0.015.2814.0	1	tube
5	2.1310.004.2	8	flat washer 8.4x17
6	2.6851.005.0	1	clamp Ø 40/60
7	2.6851.004.0	1	clamp Ø 32/50
8	2.6851.011.0	1	clamp Ø 100/120
9	2.6851.013.0	1	clamp 120-140
10	0.015.3216.0/10	1	shield
11	2.0112.205.2	4	screw m 8 p.1.25 x 16
12	2.0114.207.2	4	screw m 8 p.1.25 x 20
13	0.015.3217.3/10	1	bracket
14	0.015.3566.0	1	valve
15	2.1856.004.0	2	rivet 4
16	2.1312.001.2	2	washer 4



K9\_J3181\_10\_0-A-001

**INTERCOOLER**

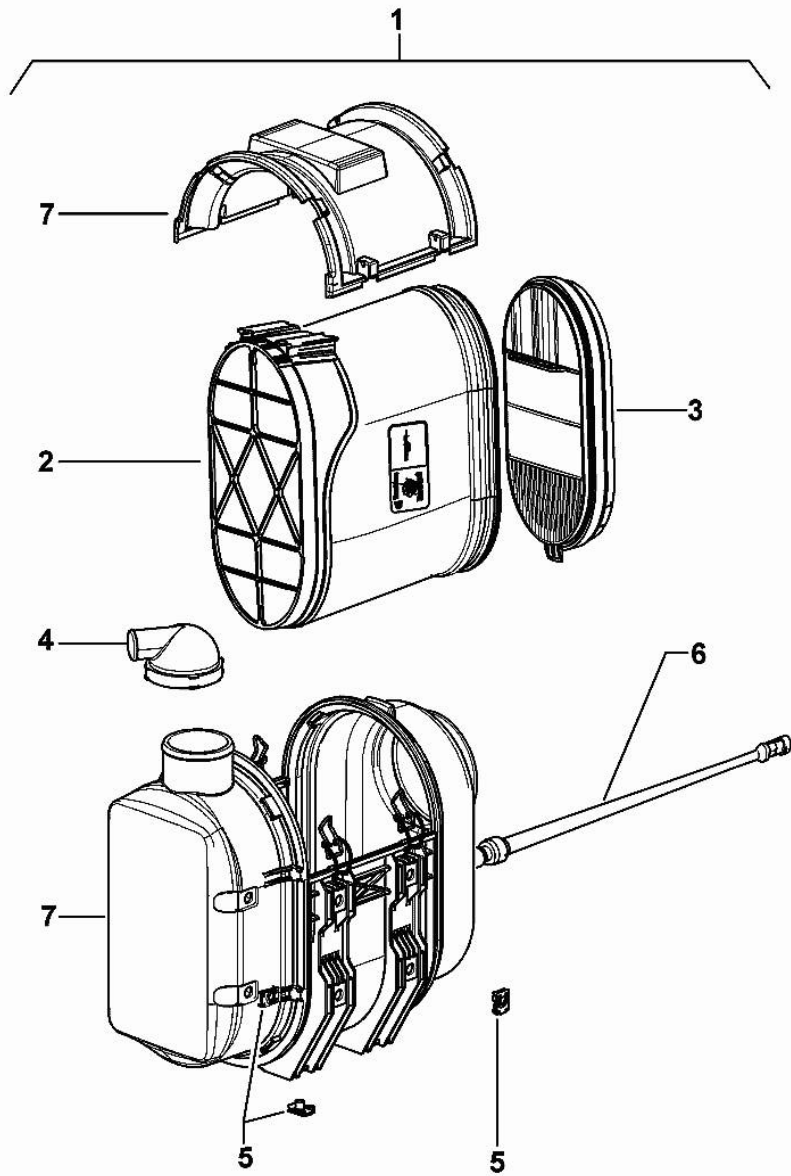
Fig.	P/n	QTY	Name
1	0.015.2736.2/20	1	intercooler
2	0.900.1162.8	1	radiator
3	0.900.1162.9	2	pin m8 p.1.25
4	0.900.1163.0	4	washer Ø 8.4
5	0.900.1213.2	2	washer Ø 8
6	0.900.1213.3	2	nut m8 p.1.25
7	0.900.1213.4	1	oil cooler
8	0.900.1213.5	1	screw M8X16
9	0.900.1213.7	1	radiator
10	0.900.1213.8	1	spacer



0.015.2736.2/20

**AIR CLEANER**

Fig.	P/n	QTY	Name
1	2.4249.722.0	1	air filter
2	0.900.0862.6	1	external air filter element
3	0.900.0793.7	1	internal air filter element
4	0.900.0793.8	1	valve
5	0.900.0272.4	12	clip
6	0.900.0272.2	1	electric cable
7	0.000.0000.1		cannot be supplied



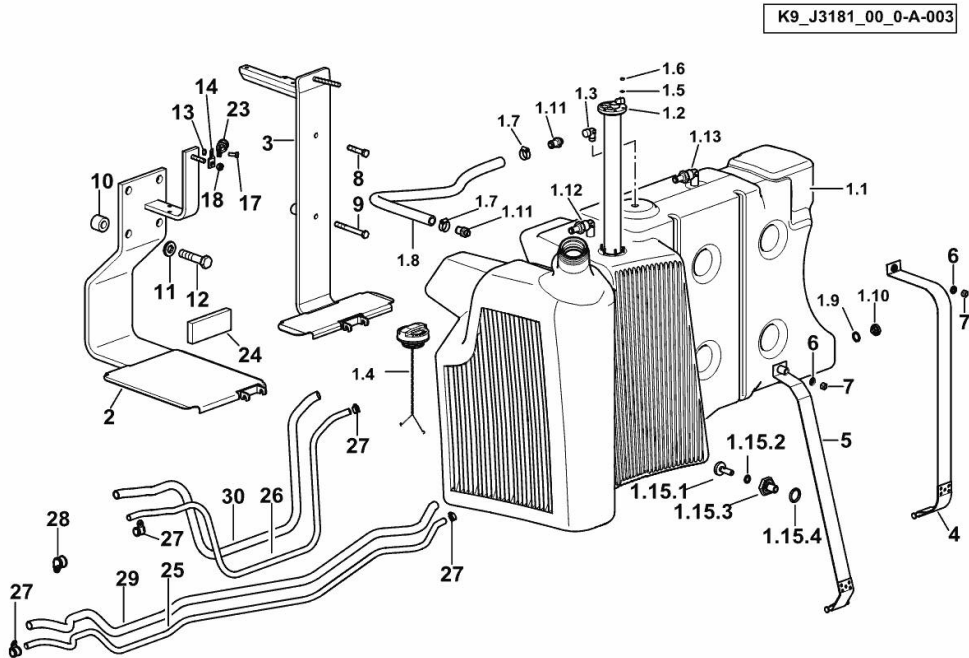
2\_4249\_722\_0

**FUEL SYSTEM - TANK**

Fig.	P/n	QTY	Name
------	-----	-----	------

**Notes:**

[XL 185 DCR HI-LEVEL -> 20001]



1.1	0.014.0702.3/40	1	fuel tank lt. 300
1.2	2.7059.844.0	1	float
1.3	2.3249.224.0	1	pipe fitting Ø 22 / 3/8" GAS
1.4	0.016.0151.4	1	plug ☞ 0.016.0151.4
1.5	2.1310.028.2	6	flat washer
1.6	2.1011.101.2	6	nut
1.7	01173962	2	clamp Ø 20/32
1.8	0.016.9302.0/10	1	tube
1.9	2.1539.040.0	1	special oil seal 21.82 x 3.53
1.10	2.3199.332.0	1	plug m 12
1.11	2.3249.245.0	2	pipe fitting Ø 12 / 3/8" GAS
1.12	0.015.9459.3/10	1	tube
1.13	0.016.7518.3/10	1	tube
1.15.1	0.016.9607.0	1	plug m10
1.15.2	2.1560.006.0	1	gasket 10.2 x 16
1.15.3	0.016.9605.0	1	plug m14
1.15.4	2.1539.040.0	1	special oil seal 21.82 x 3.53
2	0.014.0711.3/20	1	tank support
3	0.014.8104.3/30	1	tank support
4	04438108/10	1	fascia
5	04436122/10	1	fascia
6	2.1310.006.2	2	flat washer 10.5x21
7	01136453	2	nut m 10
8	2.0112.421.2	1	screw m 12 p.1.75 x 60
9	2.0112.431.2	1	screw m 12 p.1.75 x 110
10	04427061	4	bushing 20.5x40x30
11	01167055	4	washer 20.5x40
12	2.0399.302.2	4	screw m 20 p.2x90
13	01122477	1	nut m 8 p.1.25
14	04438416	1	bracket
17	2.0114.207.2	1	screw m 8 p.1.25 x 20
18	2.1011.106.2	1	nut m 10 p.1.5
23	01213283	1	clamp Ø 20/28
24	0.015.7103.0	1	gasket 60x150x18
25	0.015.8178.0/10	1	tube
26	0.015.8179.0	1	tube
27	2.6851.018.0	4	clamp Ø11/17
28	2.6839.054.0	1	clamp Ø 20/25
29	0.016.7110.0	1	sheath mm 2317
30	0.015.8206.0/10	1	sheath L=1291.5



**Suggest:**

**For more complete manuals. Please go to the home page.**

**<https://www.ebooklibonline.com>**

**If the above button click is invalid. Please download this document first, and then click the above link to download the complete manual.**

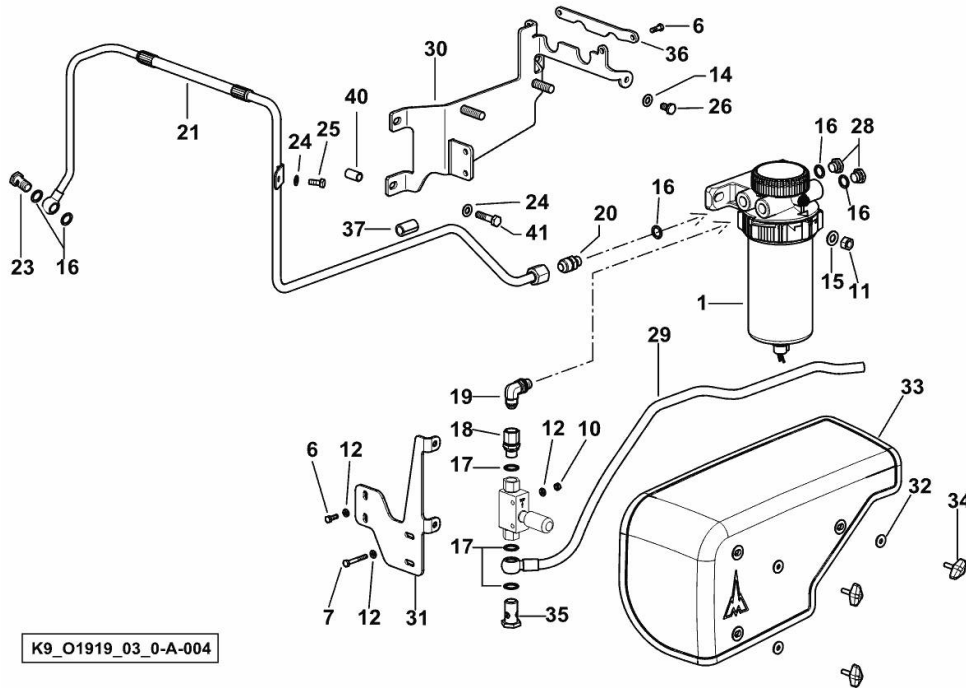
**Thank you so much for reading**

**FUEL FILTER - PIPES**

Fig.	P/n	QTY	Name
------	-----	-----	------

**Notes:**

[XL 185 DCR HI-LEVEL -> 20001]

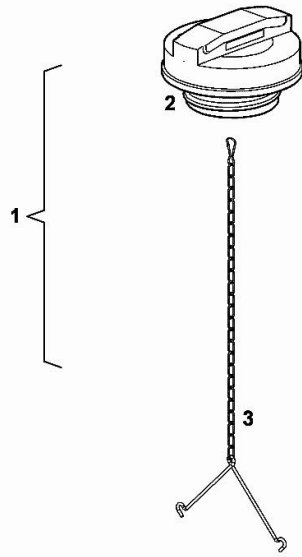


1	2.4319.300.0/20	1	precleaner ☞ 2.4319.300.0/20
6	2.0112.006.2	4	screw m 6 p.1 x 18
7	2.0112.017.2	2	screw m 6 p.1x45
10	2.1011.103.2	2	nut m 6 p.1
11	2.1011.107.2	2	nut m 12 p.1.75
12	2.1310.002.2	6	flat washer 6.4x12.5
14	2.1310.006.2	1	flat washer 10.5x21
15	2.1310.007.2	2	flat washer 13 x 24
16	2.1560.012.0	5	gasket 16.2 x 22
17	2.1560.014.0	3	washer 18.2 x 24
18	2.3339.877.2	1	pipe fitting m 18 p.1.5 3/4" - 16 JIC
19	2.3249.101.2	1	pipe fitting m 16 p.1.5
20	2.3249.088.2	1	pipe fitting M16x1,5-7/8" 14 JIC
21	0.015.6096.3	1	tube
23	2.3335.007.2	1	pipe union m 16 p.1.5x28
24	2.1310.004.2	2	flat washer 8.4x17
25	2.0112.207.2	1	screw m 8 p 1.25 x 20
26	2.0112.306.2	1	screw m 10
28	2.3110.404.2	2	plug m 16 p.1.5
29	0.016.6832.0	1	flexible hose mm 1300
30	0.016.0427.3/10	1	bracket
31	0.016.0421.3	1	support
32	2.1312.003.3	3	washer 6.6 x 18
33	0.016.0424.0/10	1	hood
34	2.0399.329.0	3	screw
35	2.3335.008.2	1	pipe union m 18 p.1.5 x 32
36	0.016.8832.0	1	bracket
37	02382224	1	sleeve 12
40	2.1549.655.2	1	spacer
41	2.0112.219.2	1	screw m 8 p.1.25x55

K9\_O1919\_03\_0-A-004

**SCREW PLUG**

Fig.	P/n	QTY	Name
1	0.016.0151.4	1	plug
2	0.000.0000.1	1	cannot be supplied
3	0.900.0986.2	1	small chain



0.016.0151.4

**<https://www.ebooklibonline.com>**

Hello dear friend!

Thank you very much for reading.

Enter the link into your browser.

The full manual is available for immediate download.

**<https://www.ebooklibonline.com>**