

Section: B0 - ENGINE

**ENGINE TYPE-APPROVAL DATA PLATE**

| Fig. | P/n | QTY | Name |
|------|-----|-----|------|
|------|-----|-----|------|

**Notes:**

[XE 75 2WD -> ZKDS460100RH05001] [XE 75 4WD -> ZKDS460200RH05001]

|   |              |  |   |
|---|--------------|--|---|
| 1 | 0.000.0000.1 |  | cannot be supplied<br>MADE BY TREVIGLIO ITALY |
| 2 | 0.000.0000.1 |  | cannot be supplied<br>MADE AT RANIPET - INDIA |



9\_STA000\_00\_0-A-001

Section: B0 - ENGINE

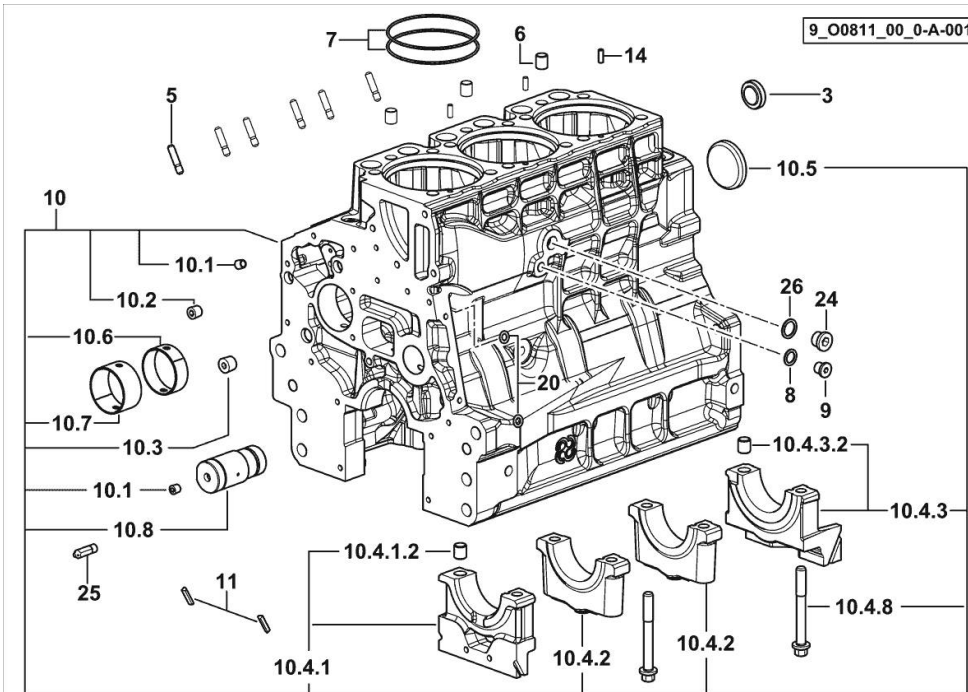
**CRANKCASE**

| Fig. | P/n | QTY | Name |
|------|-----|-----|------|
|------|-----|-----|------|

**Notes:**

FOR ENGINES PRODUCED IN : TREVIGLIO ITALY [XE 75 4WD -> ZKDS460200RH05001] FOR ENGINES

PRODUCED IN : TREVIGLIO ITALY [XE 75 2WD -> ZKDS460100RH05001]



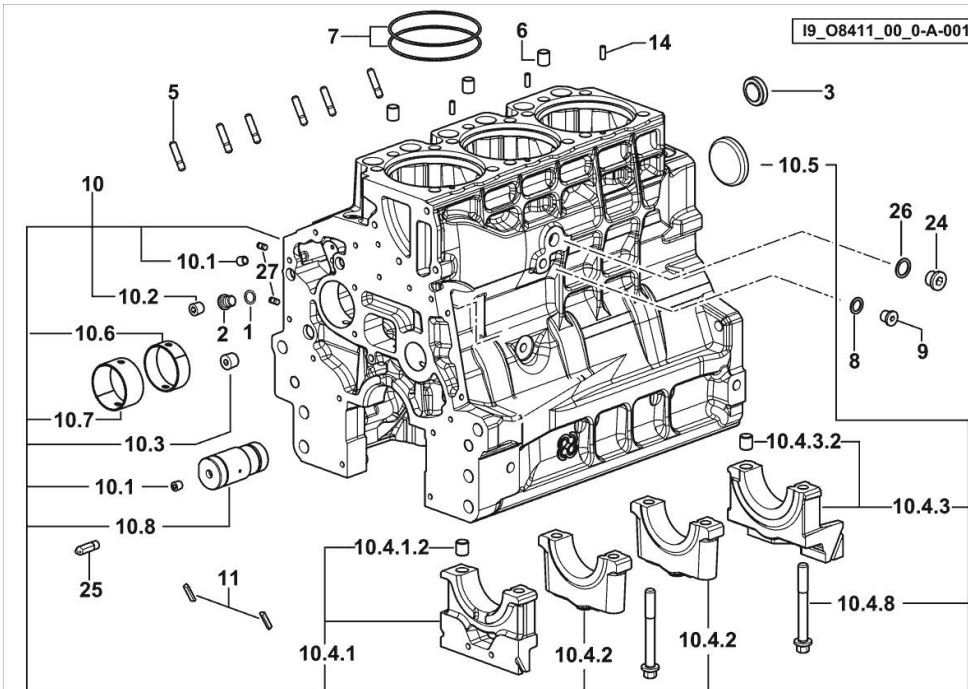
|          |                 |    |                              |
|----------|-----------------|----|------------------------------|
| 3        | 2.3199.312.2/20 | 1  | plug m 35x1.5x9.5            |
| 5        | 2.0439.279.7    | 6  | stud bolt m 8 p.1 x 25       |
| 6        | 2.1559.188.2    | 3  | bush 11.4 x 14 x16           |
| 7        | 2.1539.259.0    | 6  | special oil seal 107.62x2.62 |
| 8        | 2.1560.010.0    | 1  | gasket 14.2 x 20             |
| 9        | 2.3199.292.0    | 1  | plug 1/4" gas                |
| 10       | 0.014.9911.4/30 | 1  | crankcase                    |
| 10.1     | 2.3130.001.1    | 12 | plug 1/8" gas                |
| 10.2     | 2.3130.002.1    | 4  | plug 1/4" gas                |
| 10.3     | 2.3130.003.1    | 2  | plug 3/8" gas                |
| 10.4.1   | 0.065.1112.3    | 1  | support                      |
| 10.4.1.2 | 2.1699.165.0    | 1  | bush 12.3x15x16              |
| 10.4.2   | 0.065.1114.0/10 | 2  | support                      |
| 10.4.3   | 0.065.1116.3    | 1  | support                      |
| 10.4.3.2 | 2.1699.165.0    | 1  | bush 12.3x15x16              |
| 10.4.8   | 0.065.1117.0    | 8  | screw m 12 x 100             |
| 10.5     | 2.3179.012.0    | 1  | plug 60                      |
| 10.6     | 0.065.1140.0    | 3  | special bushing 59X55X20     |
| 10.7     | 0.065.1141.0    | 1  | special bushing 59X55X30     |
| 10.8     | 0.014.1340.0/10 | 1  | pin mm 85                    |
| 11       | 0.066.1152.0/10 | 4  | gasket                       |
| 14       | 2.1549.154.2    | 3  | bush 4.8x5.8x16              |
| 20       | 2.1470.004.2    | 4  | lock washer 8                |
| 24       | 2.3120.101.0    | 1  | plug m 18 p.1.5              |
| 25       | 0.013.4946.0/10 | 1  | sprayer nozzle               |
| 26       | 2.1560.014.0    | 1  | washer 18.2 x 24             |

**CRANKCASE**

| Fig. | P/n | QTY | Name |
|------|-----|-----|------|
|------|-----|-----|------|

**Notes:**

[XE 75 4WD -> ZKDS460200RH05001]



|          |                 |    |                              |
|----------|-----------------|----|------------------------------|
| 1        | 2.3120.008.4    | 1  | plug m 12 x 1,5              |
| 2        | 2.1560.008.0    | 1  | gasket 12.2 x 18             |
| 3        | 2.3199.312.2/20 | 1  | plug m 35x1.5x9.5            |
| 5        | 2.0439.279.7    | 6  | stud bolt m 8 p.1 x 25       |
| 6        | 2.1559.188.2    | 3  | bush 11.4 x 14 x16           |
| 7        | 2.1539.259.0    | 6  | special oil seal 107.62x2.62 |
| 8        | 2.1560.010.0    | 1  | gasket 14.2 x 20             |
| 9        | 2.3199.292.0    | 1  | plug 1/4" gas                |
| 10       | 0.014.9911.4/30 | 1  | crankcase                    |
| 10.1     | 2.3130.001.1    | 12 | plug 1/8" gas                |
| 10.2     | 2.3130.002.1    | 4  | plug 1/4" gas                |
| 10.3     | 2.3130.003.1    | 2  | plug 3/8" gas                |
| 10.4.1   | 0.065.1112.3    | 1  | support                      |
| 10.4.1.2 | 2.1699.165.0    | 1  | bush 12.3x15x16              |
| 10.4.2   | 0.065.1114.0/10 | 2  | support                      |
| 10.4.3   | 0.065.1116.3    | 1  | support                      |
| 10.4.3.2 | 2.1699.165.0    | 1  | bush 12.3x15x16              |
| 10.4.8   | 0.065.1117.0    | 8  | screw m 12 x 100             |
| 10.5     | 2.3179.012.0    | 1  | plug 60                      |
| 10.6     | 0.065.1140.0    | 3  | special bushing 59X55X20     |
| 10.7     | 0.065.1141.0    | 1  | special bushing 59X55X30     |
| 10.8     | 0.014.1340.0/10 | 1  | pin mm 85                    |
| 11       | 0.066.1152.0/10 | 4  | gasket                       |
| 14       | 2.1549.154.2    | 3  | bush 4.8x5.8x16              |
| 24       | 2.3120.101.0    | 1  | plug m 18 p.1.5              |
| 25       | 0.013.4946.0/10 | 1  | sprayer nozzle               |
| 26       | 2.1560.014.0    | 1  | washer 18.2 x 24             |
| 27       | 2.1890.003.2    | 2  | expansion plug 6             |

**<https://www.ebooklibonline.com>**

Hello dear friend!

Thank you very much for reading.

Enter the link into your browser.

The full manual is available for immediate download.

**<https://www.ebooklibonline.com>**

Section: B0 - ENGINE

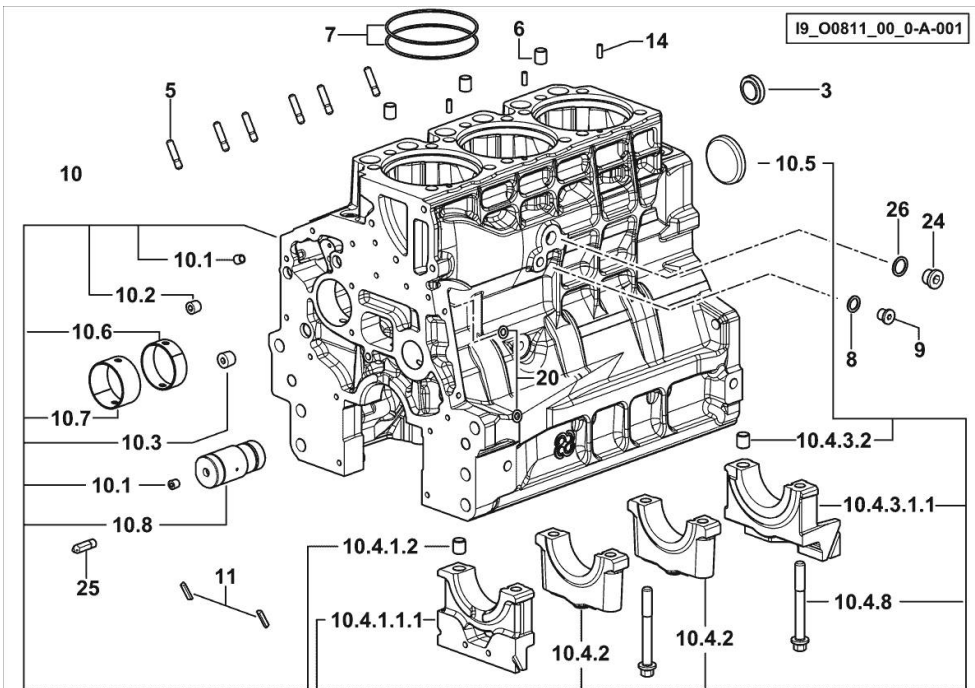
**CRANKCASE**

| Fig. | P/n | QTY | Name |
|------|-----|-----|------|
|------|-----|-----|------|

**Notes:**

FOR ENGINES PRODUCED IN : RANIPET - INDIA [XE 75 2WD -> ZKDS460100RH05001] FOR ENGINES

PRODUCED IN : RANIPET - INDIA [XE 75 4WD -> ZKDS460200RH05001] -> 5002



|            |                 |    |                              |
|------------|-----------------|----|------------------------------|
| 3          | 2.3199.312.2/20 | 1  | plug m 35x1.5x9.5            |
| 5          | 2.0439.279.7    | 6  | stud bolt m 8 p.1 x 25       |
| 6          | 2.1559.188.2    | 3  | bush 11.4 x 14 x16           |
| 7          | 2.1539.259.0    | 6  | special oil seal 107.62x2.62 |
| 8          | 2.1560.010.0    | 1  | gasket 14.2 x 20             |
| 9          | 2.3199.292.0    | 1  | plug 1/4" gas                |
| 10         | 0.014.9911.4/30 | 1  | crankcase                    |
| 10.1       | 2.3130.001.1    | 12 | plug 1/8" gas                |
| 10.2       | 2.3130.002.1    | 4  | plug 1/4" gas                |
| 10.3       | 2.3130.003.1    | 2  | plug 3/8" gas                |
| 10.4.1.1.1 | 0.065.1112.7/10 | 1  | support                      |
| 10.4.1.2   | 2.1699.165.0    | 1  | bush 12.3x15x16              |
| 10.4.2     | 0.065.1114.0/10 | 2  | support                      |
| 10.4.3.1.1 | 0.065.1116.7/10 | 1  | support                      |
| 10.4.3.2   | 2.1699.165.0    | 1  | bush 12.3x15x16              |
| 10.4.8     | 0.065.1117.0    | 8  | screw m 12 x 100             |
| 10.5       | 2.3179.012.0    | 1  | plug 60                      |
| 10.6       | 0.065.1140.0    | 3  | special bushing 59X55X20     |
| 10.7       | 0.065.1141.0    | 1  | special bushing 59X55X30     |
| 10.8       | 0.014.1340.0/10 | 1  | pin mm 85                    |
| 11         | 0.066.1152.0/10 | 4  | gasket                       |
| 14         | 2.1549.154.2    | 3  | bush 4.8x5.8x16              |
| 20         | 2.1470.004.2    | 4  | lock washer 8                |
| 24         | 2.3120.101.0    | 1  | plug m 18 p.1.5              |
| 25         | 0.013.4946.0/10 | 1  | sprayer nozzle               |
| 26         | 2.1560.014.0    | 1  | washer 18.2 x 24             |

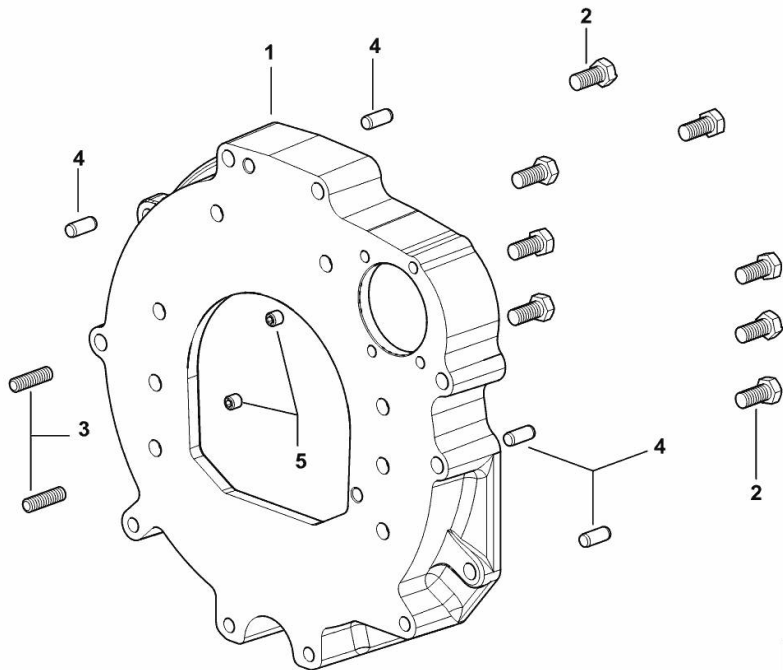
**MONOBLOC ENGINE-GEARBOX CONNECTING FLANGE**

| Fig. | P/n | QTY | Name |
|------|-----|-----|------|
|------|-----|-----|------|

**Notes:**

[XE 75 4WD -> ZKDS460200RH05001] [XE 75 2WD -> ZKDS460100RH05001]

|   |              |   |                               |
|---|--------------|---|-------------------------------|
| 1 | 0.015.8814.0 | 1 | flange                        |
| 2 | 2.0112.511.2 | 8 | screw m 14 p.2 x 30           |
| 3 | 2.0432.255.7 | 2 | stud bolt m 12 p.1.75-1.25x25 |
| 4 | 2.1651.912.0 | 4 | cylindrical plug 12x28        |
| 5 | 2.0512.404.7 | 2 | screw                         |



Section: B0 - ENGINE

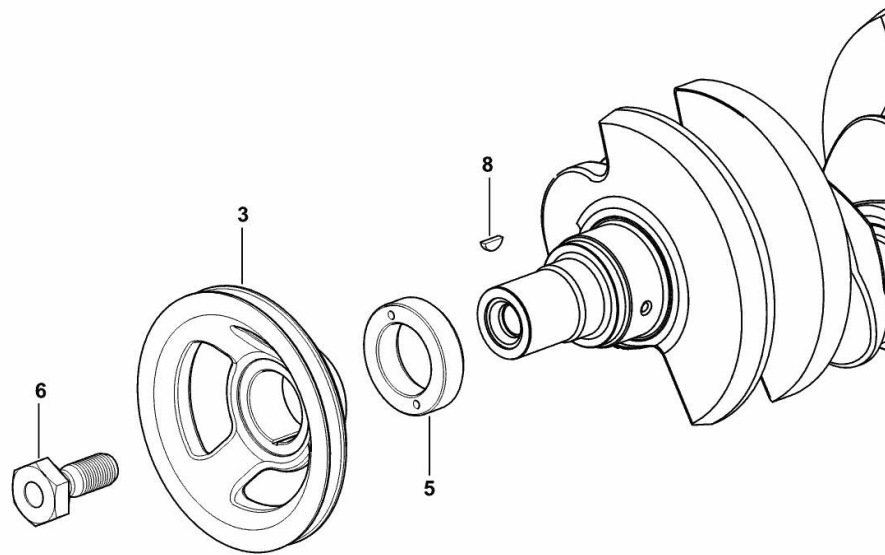
**CRANKSHAFT PULLEY**

| Fig. | P/n | QTY | Name |
|------|-----|-----|------|
|------|-----|-----|------|

**Notes:**

FOR ENGINES PRODUCED IN : TREVIGLIO ITALY [XE 75 4WD -> ZKDS460200RH05001] FOR ENGINES PRODUCED IN : TREVIGLIO ITALY [XE 75 2WD -> ZKDS460100RH05001]

|   |                 |   |                     |
|---|-----------------|---|---------------------|
| 3 | 0.007.1457.0/30 | 1 | pulley              |
| 5 | 0.085.1248.0/20 | 1 | hub                 |
| 6 | 2.0399.144.7/10 | 1 | screw m 20 p.1.5x51 |
| 8 | 2.1720.006.0    | 1 | key 4x6.5           |



9\_33312\_02\_0-A-001

Section: B0 - ENGINE

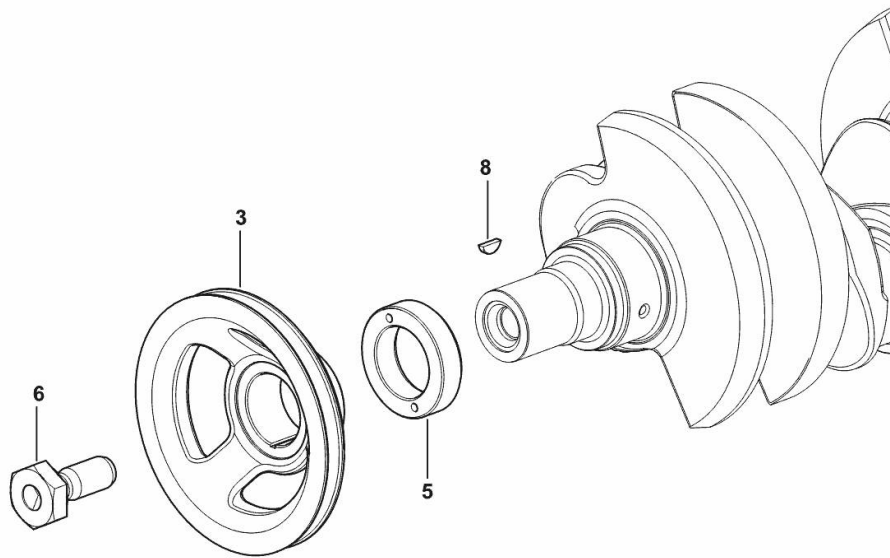
**CRANKSHAFT PULLEY**

| Fig. | P/n | QTY | Name |
|------|-----|-----|------|
|------|-----|-----|------|

**Notes:**

FOR ENGINES PRODUCED IN : RANIPET - INDIA [XE 75 2WD -> ZKDS460100RH05001] FOR ENGINES  
PRODUCED IN : RANIPET - INDIA [XE 75 4WD -> ZKDS460200RH05001] -> 5002

|   |                 |   |                     |
|---|-----------------|---|---------------------|
| 3 | 0.007.1457.0/30 | 1 | pulley              |
| 5 | 0.085.1248.0/20 | 1 | hub                 |
| 6 | 2.0399.144.7/10 | 1 | screw m 20 p.1.5x51 |
| 8 | 2.1720.006.0    | 1 | key 4x6.5           |



19\_33312\_02\_0-A-001

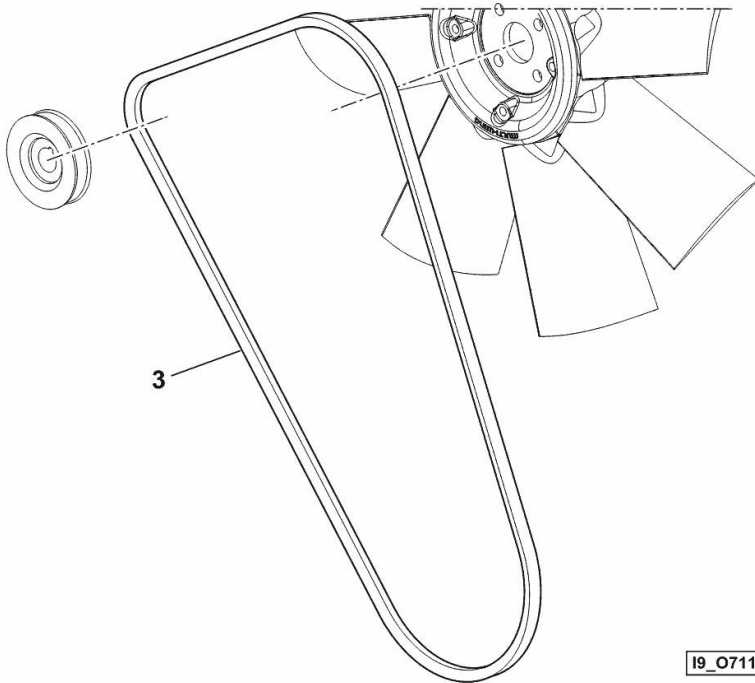
**BELT**

| Fig. | P/n | QTY | Name |
|------|-----|-----|------|
|------|-----|-----|------|

**Notes:**

[XE 75 2WD -> ZKDS460100RH05001] [XE 75 4WD -> ZKDS460200RH05001]

|   |              |   |                          |
|---|--------------|---|--------------------------|
| 3 | 2.4119.198.0 | 1 | vee belt AV 10.7x1240 mm |
|---|--------------|---|--------------------------|



19\_O7119\_11\_0-B-001

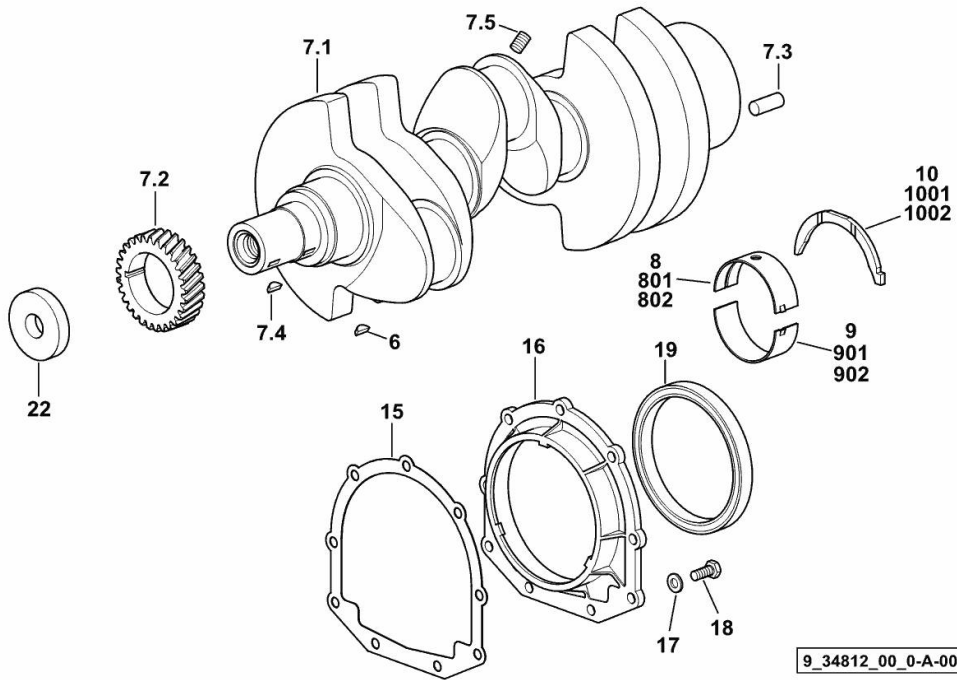
Section: B0 - ENGINE

**CRANKSHAFT**

| Fig. | P/n | QTY | Name |
|------|-----|-----|------|
|------|-----|-----|------|

**Notes:**

FOR ENGINES PRODUCED IN : TREVIGLIO ITALY [XE 75 4WD -> ZKDS460200RH05001] 5001 <- FOR ENGINES PRODUCED IN : TREVIGLIO ITALY [XE 75 2WD -> ZKDS460100RH05001] 5001 <-



|      |                 |   |                             |
|------|-----------------|---|-----------------------------|
| 6    | 2.1720.006.0    | 1 | key 4x6.5                   |
| 7.1  | 0.007.1554.0/20 | 1 | crankshaft                  |
| 7.2  | 0.065.1323.0/30 | 1 | gear Z = 29                 |
| 7.3  | 2.1651.915.0    | 1 | pin 12x35                   |
| 7.4  | 2.1720.006.0    | 1 | key 4x6.5                   |
| 7.5  | 2.3130.001.1    | 3 | plug 1/8" gas               |
| 8    | 0.065.1215.0/10 | 4 | main half bushing STANDARD  |
| 9    | 0.065.1216.0/10 | 4 | main half bushing STANDARD  |
| 10   | 0.065.1218.0    | 4 | shim STANDARD               |
| 15   | 0.065.1254.0/20 | 1 | gasket                      |
| 16   | 0.007.1711.0/10 | 1 | cover                       |
| 17   | 2.1475.002.2    | 9 | conical washer 8            |
| 18   | 2.0112.207.2    | 9 | screw m 8 p 1.25 x 20       |
| 19   | 2.1529.073.0    | 1 | special oil seal 110x130x13 |
| 22   | 2.1599.524.7    | 1 | washer 21x60x12             |
| 801  | 0.065.1215.7    |   | main half bushing - mm 0.25 |
| 802  | 0.065.1215.8    |   | main half bushing - mm 0.50 |
| 901  | 0.065.1216.7    |   | main half bushing - mm 0.25 |
| 902  | 0.065.1216.8    |   | main half bushing - mm 0.50 |
| 1001 | 0.065.1218.7    |   | shim + mm 0.10              |
| 1002 | 0.065.1218.8    |   | shim + mm 0.15              |

9\_34812\_00\_0-A-001

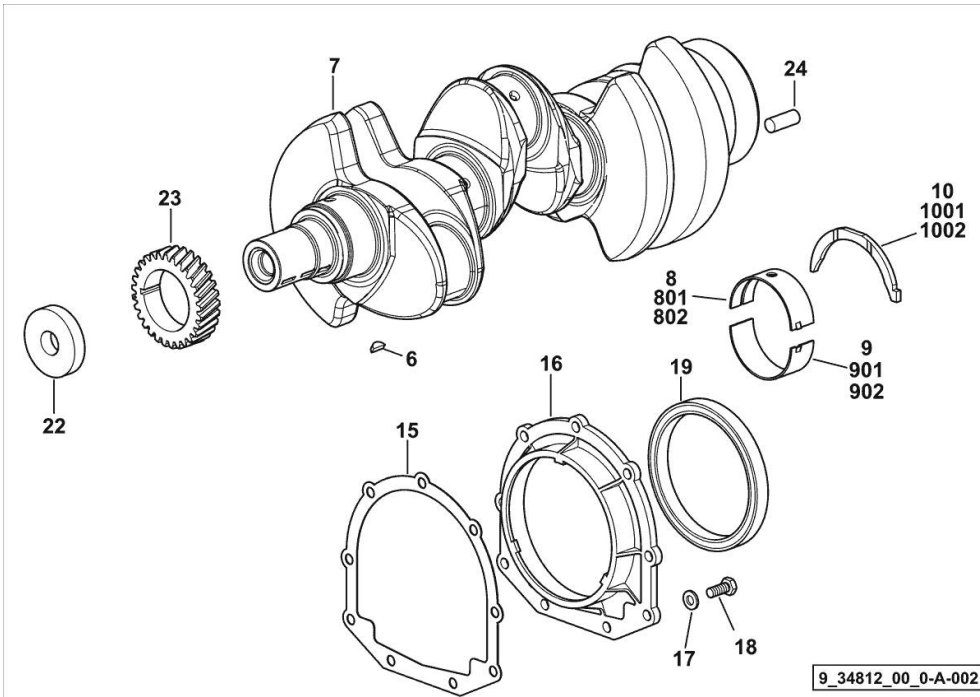
Section: B0 - ENGINE

**CRANKSHAFT**

| Fig. | P/n | QTY | Name |
|------|-----|-----|------|
|------|-----|-----|------|

**Notes:**

FOR ENGINES PRODUCED IN : TREVIGLIO ITALY [XE 75 4WD -> ZKDS460200RH05001] FOR ENGINES PRODUCED IN : TREVIGLIO ITALY [XE 75 2WD -> ZKDS460100RH05001]



|      |                 |   |                             |
|------|-----------------|---|-----------------------------|
| 6    | 2.1720.006.0    | 1 | key 4x6.5                   |
| 7    | 0.019.2255.0/20 | 1 | crankshaft                  |
| 8    | 0.019.5455.0    | 4 | main half bushing STANDARD  |
| 9    | 0.019.5456.0    | 4 | main half bushing STANDARD  |
| 10   | 0.065.1218.0    | 4 | shim STANDARD               |
| 15   | 0.065.1254.0/20 | 1 | gasket                      |
| 16   | 0.007.1711.0/10 | 1 | cover                       |
| 17   | 2.1475.002.2    | 9 | conical washer 8            |
| 18   | 2.0112.207.2    | 9 | screw m 8 p 1.25 x 20       |
| 19   | 2.1529.073.0    | 1 | special oil seal 110x130x13 |
| 22   | 2.1599.524.7    | 1 | washer 21x60x12             |
| 23   | 0.065.1323.0/30 | 1 | gear Z = 29                 |
| 24   | 2.1651.915.0    | 1 | pin 12x35                   |
| 801  | 0.065.1215.7    | - | main half bushing - mm 0.25 |
| 802  | 0.065.1215.8    | - | main half bushing - mm 0.50 |
| 901  | 0.065.1216.7    | - | main half bushing - mm 0.25 |
| 902  | 0.065.1216.8    | - | main half bushing - mm 0.50 |
| 1001 | 0.065.1218.7    | - | shim + mm 0.10              |
| 1002 | 0.065.1218.8    | - | shim + mm 0.15              |

Section: B0 - ENGINE

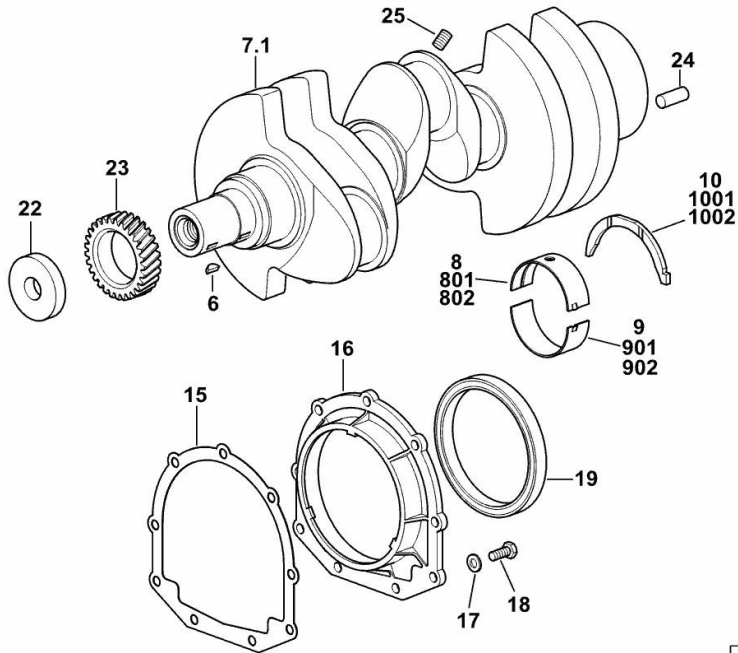
**CRANKSHAFT**

| Fig. | P/n | QTY | Name |
|------|-----|-----|------|
|------|-----|-----|------|

**Notes:**

FOR ENGINES PRODUCED IN : RANIPET - INDIA [XE 75 2WD -> ZKDS460100RH05001] 5084 <- FOR ENGINES PRODUCED IN : RANIPET - INDIA [XE 75 4WD -> ZKDS460200RH05001] 5084 <-

|      |                 |   |                             |
|------|-----------------|---|-----------------------------|
| 6    | 2.1720.006.0    | 1 | key 4x6.5                   |
| 7.1  | 0.007.1554.0/20 | 1 | crankshaft                  |
| 8    | 0.065.1215.0/10 | 4 | main half bushing STANDARD  |
| 9    | 0.065.1216.0/10 | 4 | main half bushing STANDARD  |
| 10   | 0.065.1218.0    | 4 | shim STANDARD               |
| 15   | 0.065.1254.0/20 | 1 | gasket                      |
| 16   | 0.007.1711.0/10 | 1 | cover                       |
| 17   | 2.1475.002.2    | 9 | conical washer 8            |
| 18   | 2.0112.207.2    | 9 | screw m 8 p 1.25 x 20       |
| 19   | 2.1529.073.0    | 1 | special oil seal 110x130x13 |
| 22   | 2.1599.524.7    | 1 | washer 21x60x12             |
| 23   | 0.065.1323.0/30 | 1 | gear Z = 29                 |
| 24   | 2.1651.915.0    | 1 | pin 12x35                   |
| 25   | 2.3130.001.1    | 3 | plug 1/8" gas               |
| 801  | 0.065.1215.7    |   | main half bushing - mm 0.25 |
| 802  | 0.065.1215.8    |   | main half bushing - mm 0.50 |
| 901  | 0.065.1216.7    |   | main half bushing - mm 0.25 |
| 902  | 0.065.1216.8    |   | main half bushing - mm 0.50 |
| 1001 | 0.065.1218.7    |   | shim + mm 0.10              |
| 1002 | 0.065.1218.8    |   | shim + mm 0.15              |



19\_O8312\_00\_0-A-001

Section: B0 - ENGINE

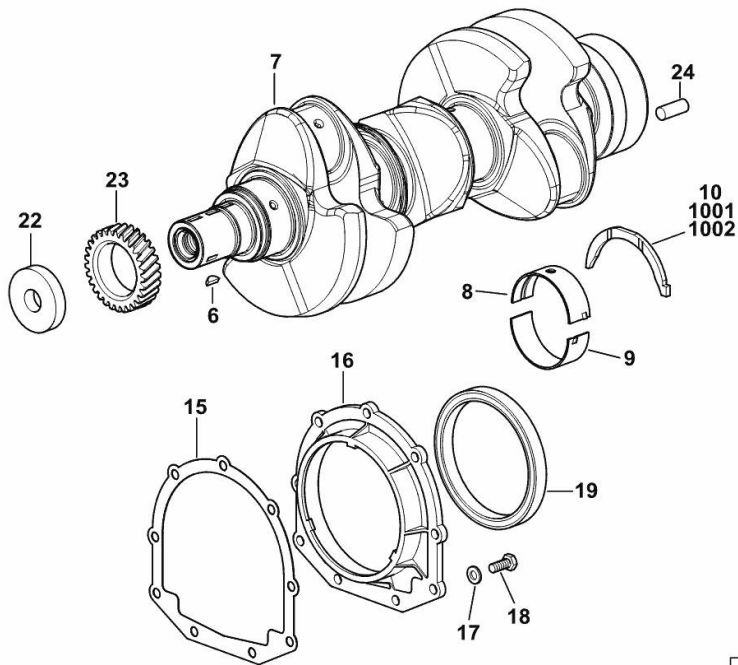
**CRANKSHAFT**

| Fig. | P/n | QTY | Name |
|------|-----|-----|------|
|------|-----|-----|------|

**Notes:**

FOR ENGINES PRODUCED IN : RANIPET - INDIA [XE 75 2WD -> ZKDS460100RH05001] FOR ENGINES PRODUCED IN : RANIPET - INDIA [XE 75 4WD -> ZKDS460200RH05001] -> 5085

|      |                 |   |                             |
|------|-----------------|---|-----------------------------|
| 6    | 2.1720.006.0    | 1 | key 4x6.5                   |
| 7    | 0.019.2255.0/30 | 1 | crankshaft                  |
| 8    | 0.019.5455.0    | 4 | main half bushing STANDARD  |
| 9    | 0.019.5456.0    | 4 | main half bushing STANDARD  |
| 10   | 0.065.1218.0    | 4 | shim STANDARD               |
| 15   | 0.065.1254.0/20 | 1 | gasket                      |
| 16   | 0.007.1711.0/10 | 1 | cover                       |
| 17   | 2.1475.002.2    | 9 | conical washer 8            |
| 18   | 2.0112.207.2    | 9 | screw m 8 p 1.25 x 20       |
| 19   | 2.1529.073.0    | 1 | special oil seal 110x130x13 |
| 22   | 2.1599.524.7    | 1 | washer 21x60x12             |
| 23   | 0.065.1323.0/30 | 1 | gear Z = 29                 |
| 24   | 2.1651.915.0    | 1 | pin 12x35                   |
| 1001 | 0.065.1218.7    |   | shim + mm 0.10              |
| 1002 | 0.065.1218.8    |   | shim + mm 0.15              |



19\_O8312\_00\_0-A-002

Section: B0 - ENGINE

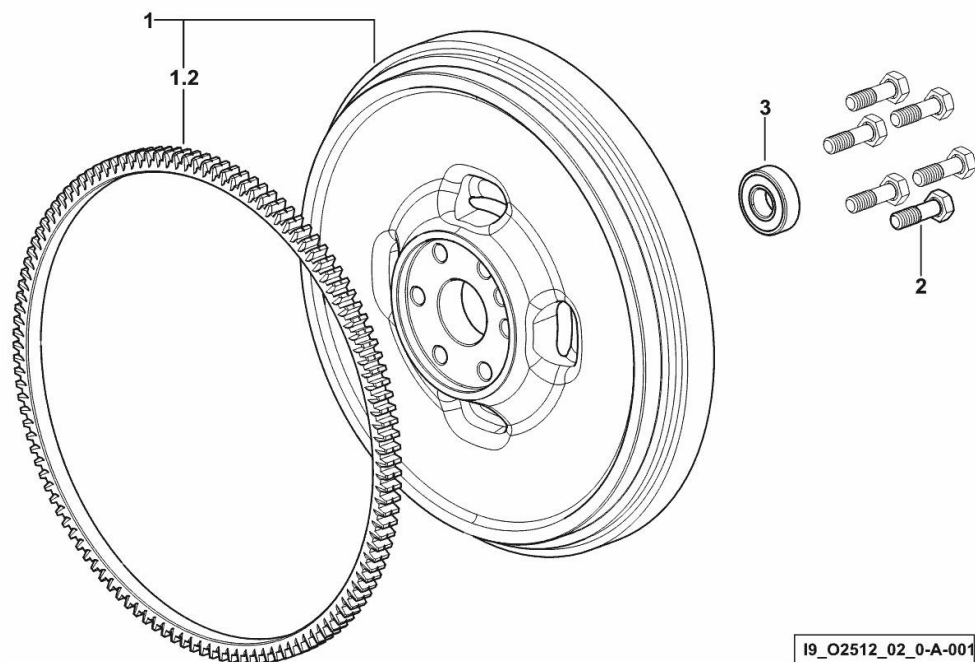
**ENGINE FLYWHEEL**

| Fig. | P/n | QTY | Name |
|------|-----|-----|------|
|------|-----|-----|------|

**Notes:**

[XE 75 4WD -&gt; ZKDS460200RH05001] [XE 75 2WD -&gt; ZKDS460100RH05001]

|     |                 |   |                       |
|-----|-----------------|---|-----------------------|
| 1   | 0.007.1617.3/30 | 1 | flywheel              |
| 1.2 | 0.069.1242.0    | 1 | crown wheel Z = 121   |
| 2   | 2.0119.174.0/10 | 6 | screw m 12 p.1.25x45  |
| 3   | 2.2041.008.9    | 1 | ball bearing 20x47x14 |





**Suggest:**

**For more complete manuals. Please go to the home page.**

**<https://www.ebooklibonline.com>**

**If the above button click is invalid. Please download this document first, and then click the above link to download the complete manual.**

**Thank you so much for reading**

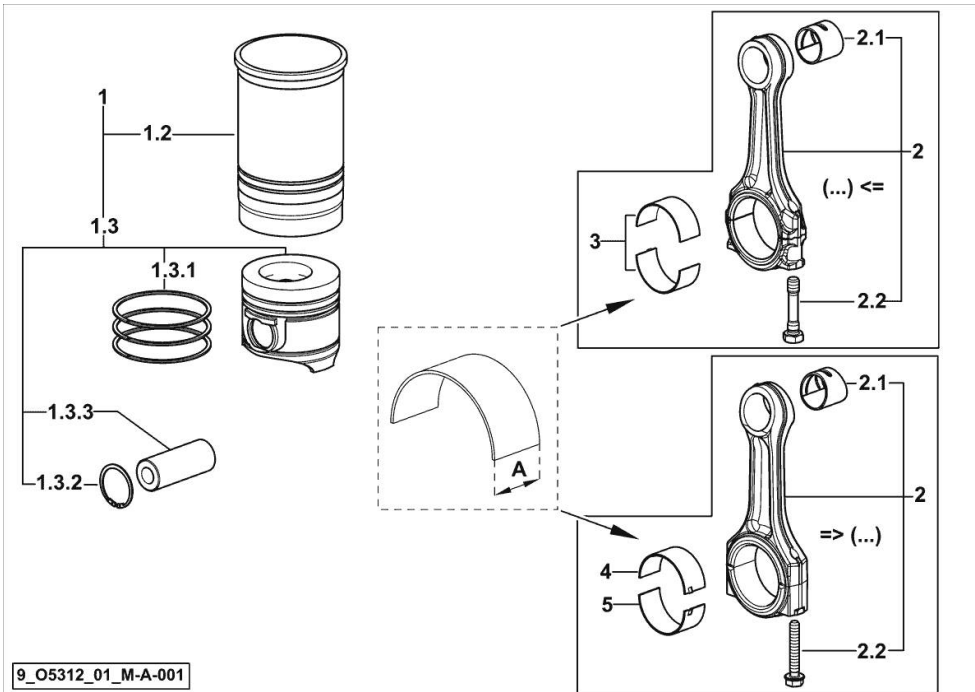
Section: B0 - ENGINE

**CYLINDER - PISTON - CONNECTING ROD**

| Fig. | P/n | QTY | Name |
|------|-----|-----|------|
|------|-----|-----|------|

**Notes:**

FOR ENGINES PRODUCED IN : TREVIGLIO ITALY [XE 75 2WD -> ZKDS460100RH05001] FOR ENGINES PRODUCED IN : TREVIGLIO ITALY [XE 75 4WD -> ZKDS460200RH05001]



|       |                 |   |  |
|-------|-----------------|---|--|
| 1     | 0.055.0065.A    | 3 | cyl. piston assembly "A"<br>- CLASS A                          |
| 1     | 0.055.0065.B    | 3 | cyl. piston assembly "B"<br>- CLASS B                          |
| 1.2   | 0.A12.2675.0    | 1 | engine cylinder "A"<br>- CLASS A                               |
| 1.2   | 0.B12.2675.0    | 1 | engine cylinder "B"<br>- CLASS B                               |
| 1.3   | 0.055.0060.A    | 1 | complete piston "A"<br>- CLASS A                               |
| 1.3   | 0.055.0060.B    | 1 | complete piston "B"<br>- CLASS B                               |
| 1.3.1 | 0.338.0052.6/20 | 1 | piston ring set  |
| 1.3.2 | 2.1411.014.1    | 2 | circlip 35   |
| 1.3.3 | 0.078.1236.0    | 1 | piston pin Ø 18 / Ø 35 / L = mm 86                             |
| 2     | 0.014.5175.3    | 3 | engine connecting rod<br>(...) <=                              |
| 2     | 0.019.2226.3/10 | 3 | engine connecting rod<br>=> (...)                              |
| 2.1   | 2.1559.255.0    | 1 | special bushing 34.60x39.130x34.65<br>(...) <=                 |
| 2.1   | 2.1559.532.0    | 1 | special bushing 34.60x39.130x36.65<br>=> (...)                 |
| 2.2   | 2.0399.213.0    | 2 | screw m 12 p.1.25x61.5<br>(...) <=                             |
| 2.2   | 2.0399.365.0    | 2 | screw m 10 p.1.25x61.5<br>=> (...)                             |
| 3     | 0.065.1225.0    | 6 | con.rod half bushing STANDARD - A = 28.75 -> 29.00<br>(...) <= |
| 3     | 0.065.1225.7    | 6 | con.rod half bushing - mm 0.25<br>(...) <=                     |
| 3     | 0.065.1225.8    | 6 | con.rod half bushing - mm 0.50<br>(...) <=                     |
| 4     | 0.019.5453.0    | 3 | con.rod half bushing STANDARD - A = 29.85 -> 30.10<br>=> (...) |
| 5     | 0.019.5454.0    | 3 | con.rod half bushing STANDARD - A = 29.85 -> 30.10<br>=> (...) |

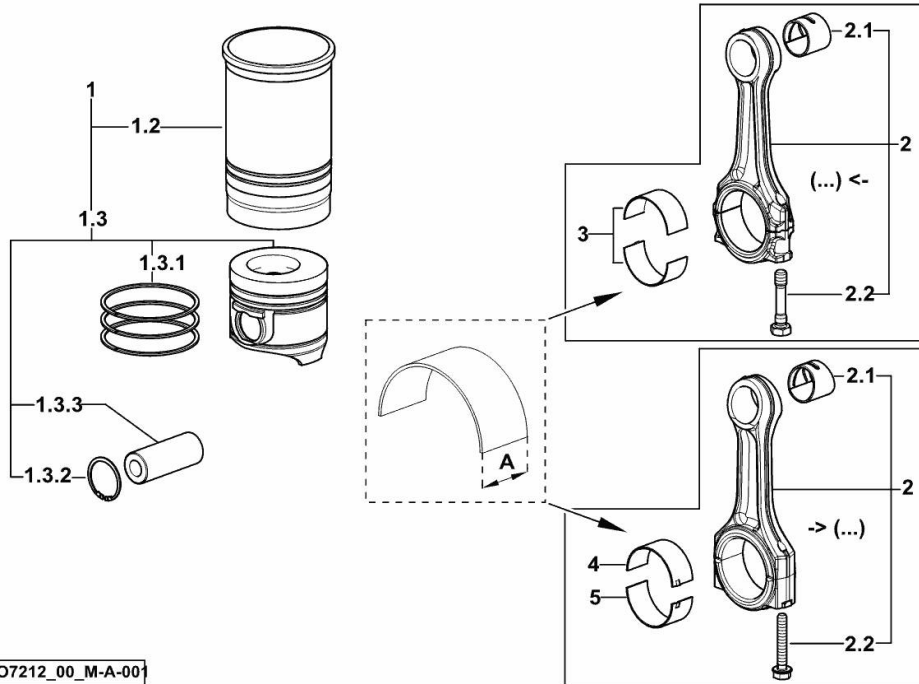
**CYLINDER - PISTON - CONNECTING ROD**

| Fig. | P/n | QTY | Name |
|------|-----|-----|------|
|------|-----|-----|------|

**Notes:**

FOR ENGINES PRODUCED IN : RANIPET - INDIA [XE 75 2WD -> ZKDS460100RH05001] FOR ENGINES

PRODUCED IN : RANIPET - INDIA [XE 75 4WD -> ZKDS460200RH05001]



I9\_07212\_00\_M-A-00

|       |                 |   |  |
|-------|-----------------|---|--|
| 1     | 0.055.0065.A    | 3 | cyl. piston assembly "A"<br>- CLASS A                          |
| 1     | 0.055.0065.B    | 3 | cyl. piston assembly "B"<br>- CLASS B                          |
| 1.2   | 0.A12.2675.0    | 1 | engine cylinder "A"<br>- CLASS A                               |
| 1.2   | 0.B12.2675.0    | 1 | engine cylinder "B"<br>- CLASS B                               |
| 1.3   | 0.055.0060.A    | 1 | complete piston "A"<br>- CLASS A                               |
| 1.3   | 0.055.0060.B    | 1 | complete piston "B"<br>- CLASS B                               |
| 1.3.1 | 0.338.0052.6/20 | 1 | piston ring set  |
| 1.3.2 | 2.1411.014.1    | 2 | circlip 35   |
| 1.3.3 | 0.078.1236.0    | 1 | piston pin Ø 18 / Ø 35 / L = mm 86                             |
| 2     | 0.014.5175.3    | 3 | engine connecting rod<br>(...) <=                              |
| 2     | 0.019.2226.3/10 | 3 | engine connecting rod<br>=> (...)                              |
| 2.1   | 2.1559.255.0    | 1 | special bushing 34.60x39.130x34.65<br>(...) <=                 |
| 2.1   | 2.1559.532.0    | 1 | special bushing 34.60x39.130x36.65<br>=> (...)                 |
| 2.2   | 2.0399.213.0    | 2 | screw m 12 p.1.25x61.5<br>(...) <=                             |
| 2.2   | 2.0399.365.0    | 2 | screw m 10 p.1.25x61.5<br>=> (...)                             |
| 3     | 0.065.1225.0    | 6 | con.rod half bushing STANDARD - A = 28.75 -> 29.00<br>(...) <= |
| 3     | 0.065.1225.7    | 6 | con.rod half bushing - mm 0.25<br>(...) <=                     |
| 3     | 0.065.1225.8    | 6 | con.rod half bushing - mm 0.50<br>(...) <=                     |
| 4     | 0.019.5453.0    | 3 | con.rod half bushing STANDARD - A = 29.85 -> 30.10<br>=> (...) |
| 5     | 0.019.5454.0    | 3 | con.rod half bushing STANDARD - A = 29.85 -> 30.10<br>=> (...) |

**<https://www.ebooklibonline.com>**

Hello dear friend!

Thank you very much for reading.

Enter the link into your browser.

The full manual is available for immediate download.

**<https://www.ebooklibonline.com>**