

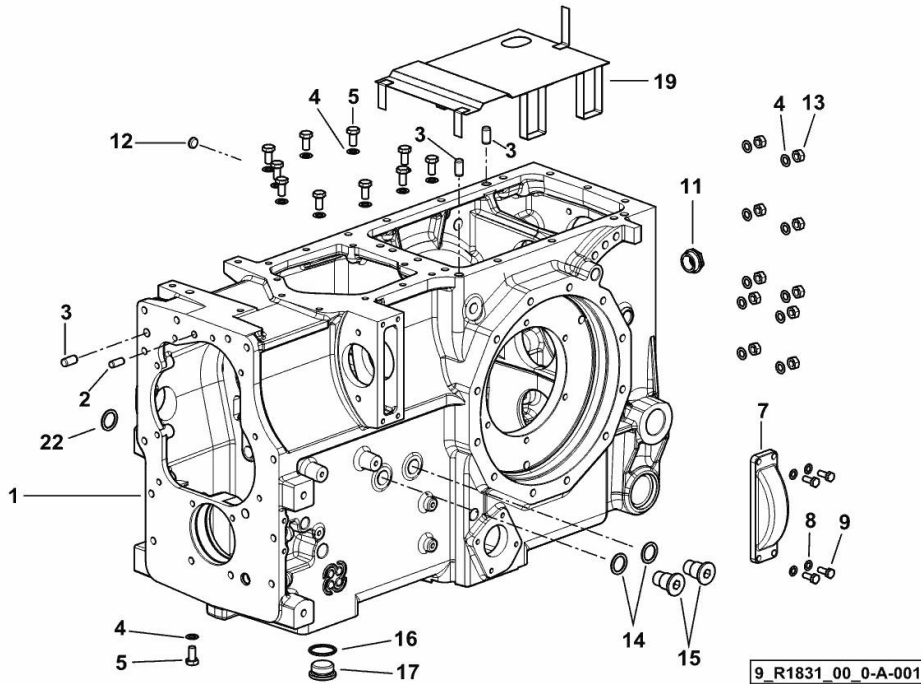
GEARBOX - REAR

Fig.	P/n	QTY	Name
------	-----	-----	------

Notes:

[XB 85 T ->5001]

1	0.014.9666.0/40	1	gear box
2	2.1651.811.0	1	cylindrical plug 10x24
3	2.1651.911.0	1	cylindrical plug
4	2.1470.006.2	28	lock washer 10
5	2.0112.307.2	18	screw m 10 p.1.5 x 20
7	0.255.3134.0/10	1	small cover
8	2.1481.007.1	4	washer 8
9	2.0112.207.2	4	screw m 8 p 1.25 x 20
11	2.3199.250.0	1	plug m 30 p.1
12	2.3171.006.4	1	plug Ø 16
13	2.1011.421.2	10	nut m 10 p.1.25
14	2.1560.020.0	2	copper gasket 24.3x32
15	2.3199.083.2	2	plug m 24 p.1.5
16	2.1560.026.0	1	gasket 35.3x41
17	2.3199.002.2	1	plug 1 gas
19	0.014.9265.2	1	division
22	2.1560.014.0	1	washer 18.2 x 24

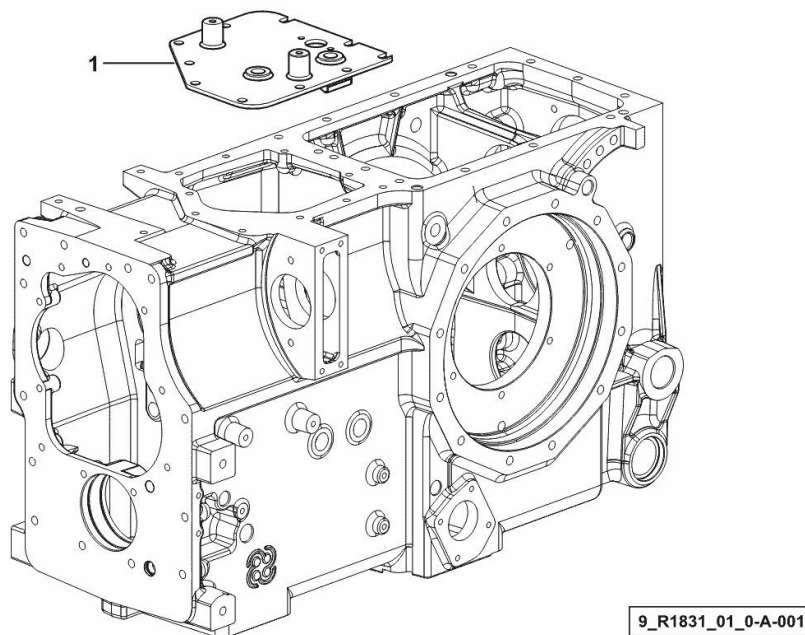


Section: D0 - TRANSMISSION
GEARBOX UPPER COVER

Fig.	P/n	QTY	Name
------	-----	-----	------

Notes:
 [XB 85 T ->5001]

1	0.016.0020.3/10	1	cover
---	-----------------	---	-------

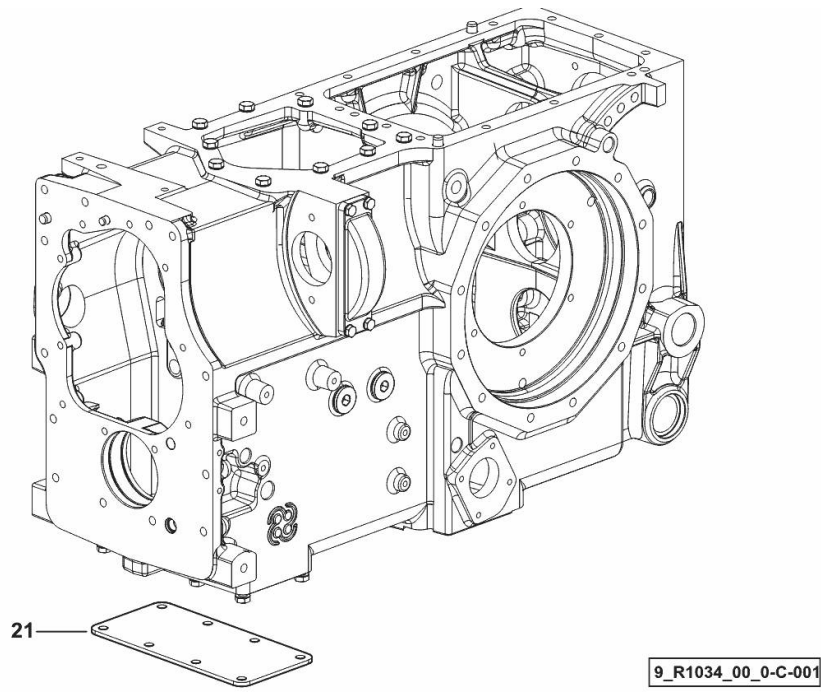


Section: D0 - TRANSMISSION
GEARBOX LOWER COVER

Fig.	P/n	QTY	Name
------	-----	-----	------

Notes:
 [XB 85 T ->5001]

21	0.255.3128.0/20	1	cover
----	-----------------	---	-------



<https://www.ebooklibonline.com>

Hello dear friend!

Thank you very much for reading.

Enter the link into your browser.

The full manual is available for immediate download.

<https://www.ebooklibonline.com>

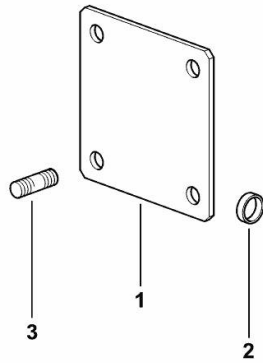
COVER FOR TYPES WITHOUT SYNCHRO PTO

Fig.	P/n	QTY	Name
-------------	------------	------------	-------------

Notes:

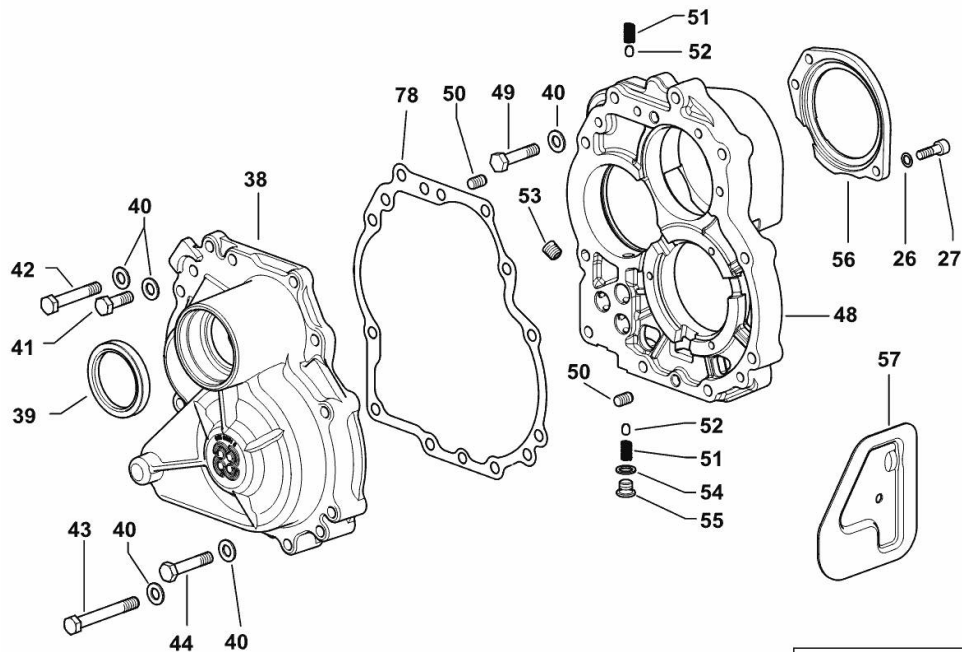
[XB 85 T ->5001]

1	0.255.3131.0/10	1	flange
2	2.3171.007.4	1	plug Ø 18
3	2.0432.155.7	4	stud bolt m 10 p.1.5 / p. 1.25 x 25



9_40536_01_0-A-001

5-SPEED GEARBOX INTERNAL FLANGES



9_H1433_01_0-A-001

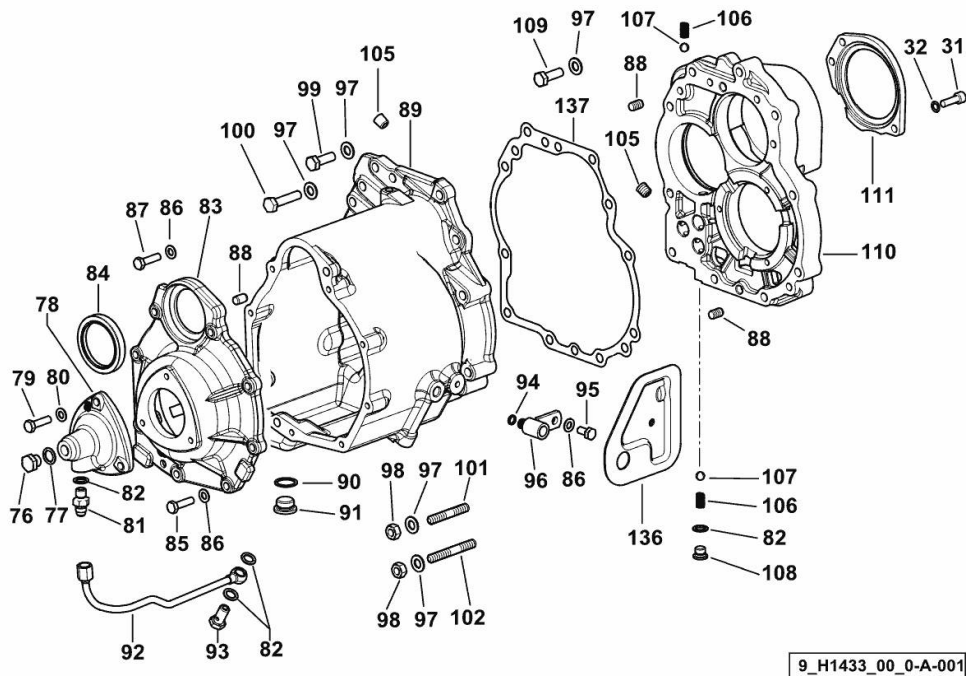
Fig.	P/n	QTY	Name
------	-----	-----	------

Notes:

FOR TYPES WITHOUT HI-LO [XB 85 T ->5001]

26	2.1480.014.2	6	washer 8
27	2.0312.208.2	6	screw m 8 p.1.25 x 25
38	0.015.0581.0	1	cover
39	2.1520.329.0	1	oil seal 55x72x10
40	2.1475.003.2	15	washer 10
41	2.0112.311.2	4	screw m 10 p.1.5 x 30
42	2.0112.321.2	5	screw m 10 p.1.5 x 60
43	2.0112.325.2	3	screw m 10 p.1.5 x 80
44	2.0112.319.2	1	screw m 10 p.1.5 x 50
48	0.014.8438.0/30	1	flange
49	2.0112.317.2	2	screw m 10 p.1.5 x 45
50	2.1651.807.0	2	pin 10 x 16
51	2.4019.622.1	3	spring 6.3 x 9.5 x 1.6 x 22.4
52	2.2999.156.0	4	ball Ø 10
53	2.3131.001.4	1	plug m 12 p.1.5
54	2.1560.008.0	2	gasket 12.2 x 18
55	2.3199.164.2/20	2	plug m 12 p.1.5
56	0.014.8340.0/10	1	cover
57	0.007.3562.3/10	1	cover
78	0.015.6286.0	1	gasket

5-SPEED GEARBOX INTERNAL FLANGES



9_H1433_00_0-A-001

Fig.	P/n	QTY	Name
------	-----	-----	------

Notes:

- FOR TYPES WITH HI - LO [XB 85 T ->5001]

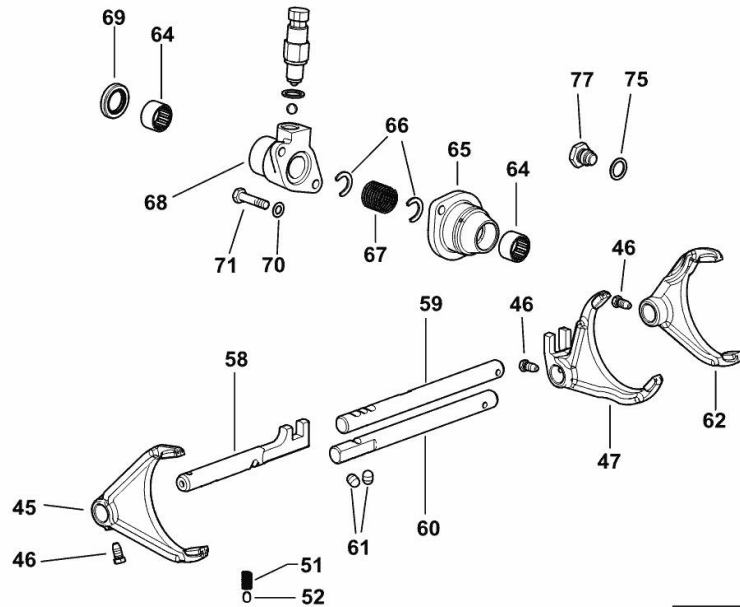
31	2.0312.208.2	6	screw m 8 p.1.25 x 25
32	2.1480.014.2	6	washer 8
76	2.3110.403.1	1	plug m 14 p.1.5x12
77	2.1560.010.0	1	gasket 14.2 x 20
78	0.007.3417.0/20	1	manifold
79	2.0112.209.2	3	screw m 8 p 1.25 x 25
80	2.1470.004.2	5	lock washer 8
81	2.3339.453.2	1	pipe fitting m 12 p.1.25-1/2"
82	2.1560.008.0	5	gasket 12.2 x 18
83	0.014.9205.0	1	cover
84	2.1520.329.0	1	oil seal 55x72x10
85	2.0112.211.2	6	screw m 8 p.1.25 x 30
86	2.1475.002.2	9	conical washer 8
87	2.0112.213.2	4	screw m 8 p.1.25 x 35
88	2.1651.807.0	4	pin 10 x 16
89	0.014.9206.0/40	1	box
90	2.1560.017.0	1	gasket 22.2 x 27
91	2.3199.001.2	1	plug 1/2" gas
92	0.007.3544.3	1	tube
93	2.3332.003.1	1	pipe union m 12 p.1.25
94	2.1530.014.0	1	oil seal
95	2.0112.205.2	1	screw m 8 p.1.25 x 16
96	0.007.3566.2	1	pipe union m 14 p.1.5
97	2.1475.003.2	15	washer 10
98	2.1011.421.2	5	nut m 10 p.1.25
99	2.0112.311.2	4	screw m 10 p.1.5 x 30
100	2.0112.321.2	4	screw m 10 p.1.5 x 60
101	2.0432.165.7	1	stud bolt m 10 p.1.5-1.25x50
102	2.0432.171.7	4	stud bolt m 10 p.1.5-1.25x80
105	2.3131.001.4	1	plug m 12 p.1.5
106	2.4019.622.1	3	spring 6.3 x 9.5 x 1.6 x 22.4
107	2.2999.156.0	4	ball Ø 10
108	2.3199.164.2/20	2	plug m 12 p.1.5
109	2.0112.317.2	2	screw m 10 p.1.5 x 45
110	0.014.8438.0/30	1	flange (-> 5001)
111	0.014.8340.0/10	1	cover
136	0.007.3563.3/10	1	cover
137	0.015.6286.0	1	gasket

5-SPEED GEARBOX INTERNAL CONTROLS

Fig.	P/n	QTY	Name
------	-----	-----	------

Notes:

FOR TYPES WITHOUT HI-LO [XB 85 T ->5001]



45	0.013.0009.0/20	1	fork
46	2.0399.019.1	3	screw m 8 p.1 x 16
47	0.012.4169.0/30	1	fork
51	2.4019.622.1	3	spring 6.3 x 9.5 x 1.6 x 22.4
52	2.2999.156.0	4	ball Ø 10
58	0.255.6478.0/40	1	rod
59	0.255.6421.0/20	1	rod
60	0.255.6477.0/20	1	rod
61	2.1699.159.0	2	cap 10 x 14.1
62	0.013.0010.0/20	1	fork
64	2.2725.030.0	2	roller cage 22 x 28 x 16
65	0.011.7127.0/20	1	support
66	0.008.5405.0	2	ring
67	2.4019.698.1/10	1	spring 21 x 25 x 46
68	0.014.9383.0/20	1	support
69	2.1519.075.0	1	oil seal 22 x 35 x 6
70	2.1470.004.2	2	lock washer 8
71	2.0112.213.2	2	screw m 8 p.1.25 x 35
75	2.1560.012.0	2	gasket 16.2 x 22
77	2.3199.263.2	1	plug m 16 p.2x16x22

9_H1433_01_0-E-003

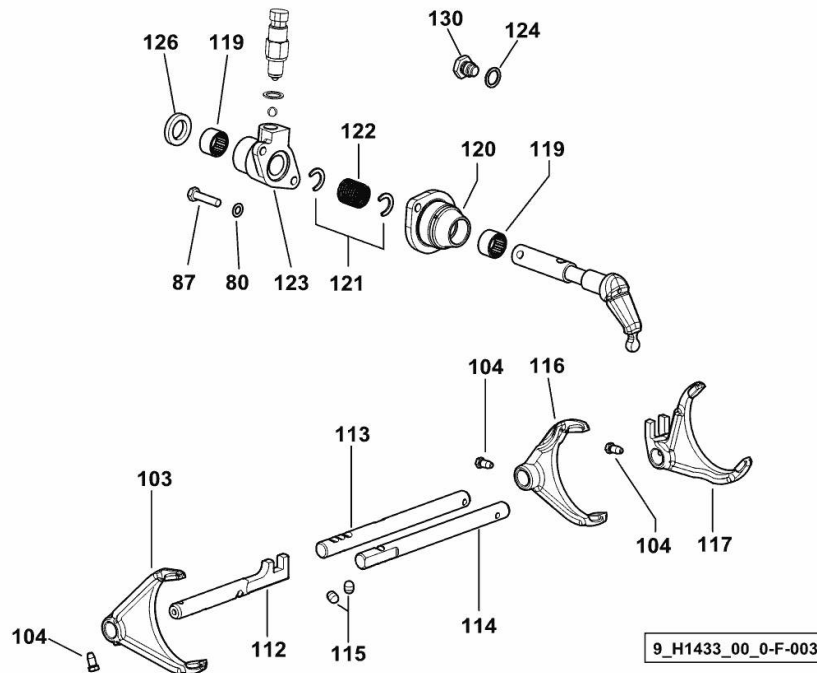
5-SPEED GEARBOX INTERNAL CONTROLS

Fig.	P/n	QTY	Name
------	-----	-----	------

Notes:

- FOR TYPES WITH HI - LO [XB 85 T ->5001]

80	2.1470.004.2	5	lock washer 8
87	2.0112.213.2	4	screw m 8 p.1.25 x 35
103	0.013.0009.0/20	1	fork
104	2.0399.019.1	3	screw m 8 p.1 x 16
112	0.255.6478.0/40	1	rod
113	0.255.6421.0/20	1	rod
114	0.255.6477.0/20	1	rod
115	2.1699.159.0	2	cap 10 x 14.1
116	0.013.0010.0/10	1	fork (5003 <-)
116	0.013.0010.0/20	1	fork (-> 5004)
117	0.012.4169.0/20	1	fork (5003 <-)
117	0.012.4169.0/30	1	fork (-> 5004)
119	2.2725.030.0	2	roller cage 22 x 28 x 16
120	0.011.7127.0/20	1	support
121	0.008.5405.0	2	ring
122	2.4019.698.1/10	1	spring 21 x 25 x 46
123	0.014.9383.0/20	1	support
124	2.1560.012.0	2	gasket 16.2 x 22
126	2.1519.075.0	1	oil seal 22 x 35 x 6
130	2.3199.263.2	1	plug m 16 p.2x16x22

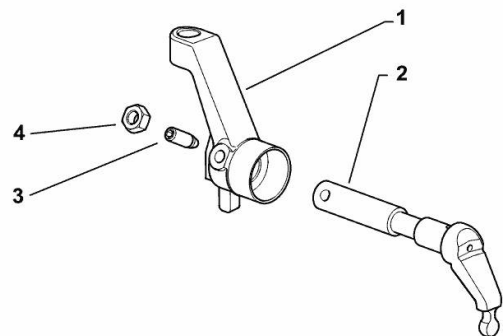


Section: D0 - TRANSMISSION
IN-CAB GEAR CONTROLS

Fig.	P/n	QTY	Name
------	-----	-----	------

Notes:
 [XB 85 T ->5001]

1	0.015.4595.2/10	1	lever
2	0.015.6226.0/10	1	lever
3	2.0399.050.2	1	screw m 10 p.1 x 30
4	2.1011.406.2	1	nut m 10 p.1



9_R2233_01_0-A-002



Suggest:

For more complete manuals. Please go to the home page.

<https://www.ebooklibonline.com>

If the above button click is invalid. Please download this document first, and then click the above link to download the complete manual.

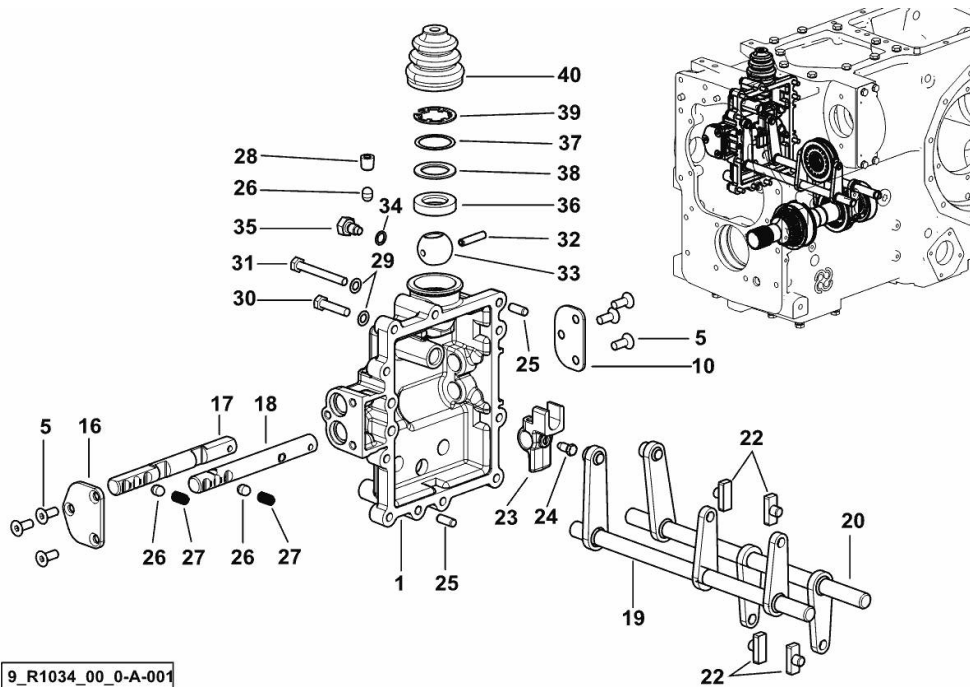
Thank you so much for reading

REDUCTION GEAR CONTROL

Fig.	P/n	QTY	Name
------	-----	-----	------

Notes:

[XB 85 T ->5001]



9_R1034_00_0-A-001

1	0.013.5466.0	1	cover
5	2.0342.305.3	6	screw m 8 x 20
10	0.013.5465.0/10	1	plate
16	0.013.5464.0/10	1	plate
17	0.013.5459.0	1	rod
18	0.013.5460.0	1	rod
19	0.255.6438.2/10	1	fork
20	0.013.5359.2/10	1	fork
22	0.255.6463.0	4	shoe
23	0.013.5458.0	1	small lever
24	2.0399.019.1	1	screw m 8 p.1 x 16
25	2.1651.709.0	2	pin 8x20
26	2.1699.159.0	3	cap 10 x 14.1
27	2.4019.622.1	2	spring 6.3 x 9.5 x 1.6 x 22.4
28	2.3131.001.4	1	plug m 12 p.1.5
29	2.1481.007.2	9	washer 8
30	2.0112.213.2	8	screw m 8 p.1.25 x 35
31	2.0112.222.2	1	screw m 8 p.1.25x65
32	2.1631.515.9	1	roll pin 6 x 32
33	0.255.6461.0	1	ball
34	2.1560.005.0	1	copper gasket 10.2 x 14
35	2.0119.124.2	1	screw m 10 x 16
36	0.255.6462.0/10	1	spacer
37	2.1580.115.0	1	shim 32.5x40x0.5
38	2.1599.429.0	1	shoulder ring 28x41.5
39	2.1499.054.1	1	circlip 42
40	0.159.6415.0/10	1	guard

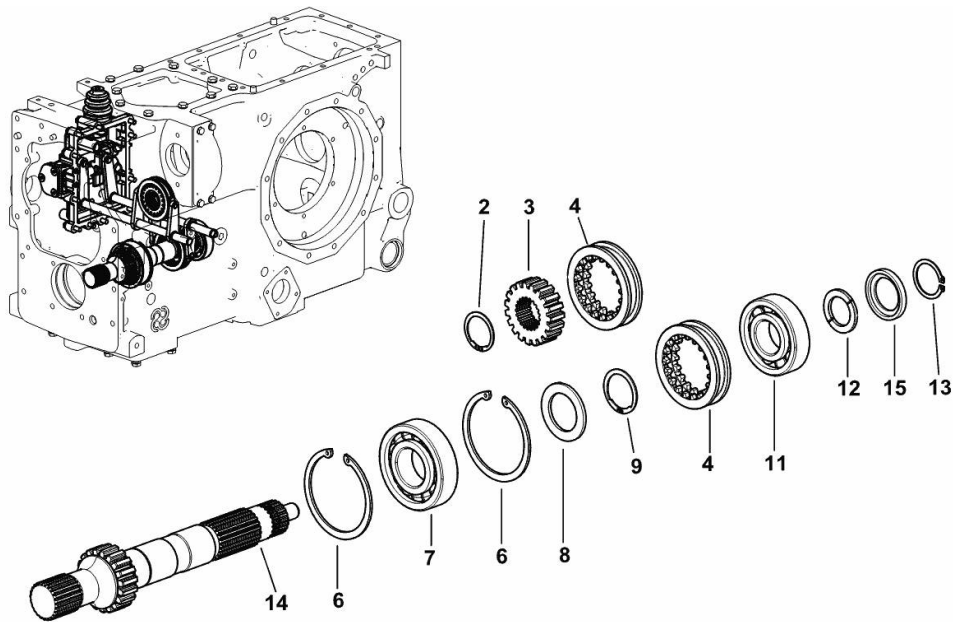
SPEED RANGE REDUCTION GEAR UNIT

Fig.	P/n	QTY	Name
-------------	------------	------------	-------------

Notes:

[XB 85 T ->5001]

2	2.1419.067.0	1	circlip 35 x 1.5
3	0.255.3439.0	1	hub Z = 19 / Z = 21
4	0.255.3438.0/20	2	sleeve Z = 19
6	2.1411.036.1	2	circlip 90
7	2.2060.012.0	1	ball bearing 40 x 90 x 23
8	0.255.3450.0	1	shoulder ring 40 x 60 x 3.5
9	2.1499.034.1	1	circlip 40 x 1.75
11	2.2060.011.0	1	ball bearing 35 x 80 x 21
12	0.008.4480.0/20	1	shoulder
13	2.1410.014.1	1	circlip 35
14	0.255.3410.0/40	1	reduction unit shaft
15	0.008.4481.0	1	ring



9_R1034_00_0-B-001

<https://www.ebooklibonline.com>

Hello dear friend!

Thank you very much for reading.

Enter the link into your browser.

The full manual is available for immediate download.

<https://www.ebooklibonline.com>