

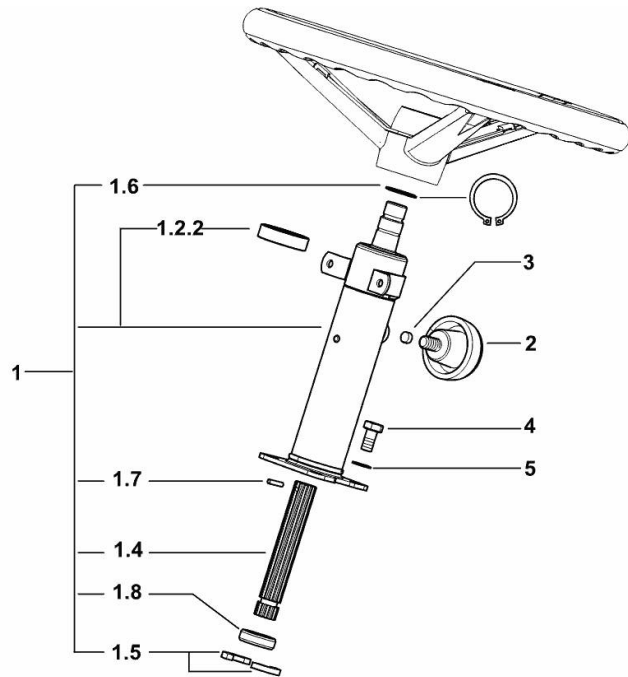
STEERING COLUMN

Fig.	P/n	QTY	Name
------	-----	-----	------

Notes:

[XB 85 T ->1001]

1	0.016.3808.3	1	steering column
1.2.2	2.2021.009.0	1	ball bearing 25 x 47 x 12
1.4	0.007.3756.0	1	shaft
1.5	2.1599.566.2	2	slewing ring 16.5 x 34 x 5
1.6	2.1410.010.7	6	circlip 25
1.7	2.1630.410.0	1	roll pin 4 x 20
1.8	2.1549.390.0	1	spacer
2	0.007.6087.2	1	knob
3	2.1579.883.0	1	spacer 10x5
4	2.0112.307.2	4	screw m 10 p.1.5 x 20
5	2.1470.006.2	4	lock washer 10



9_P9763_00_0-A-001

GEARSHIFT AND REVERSING GEAR UNIT CONTROL

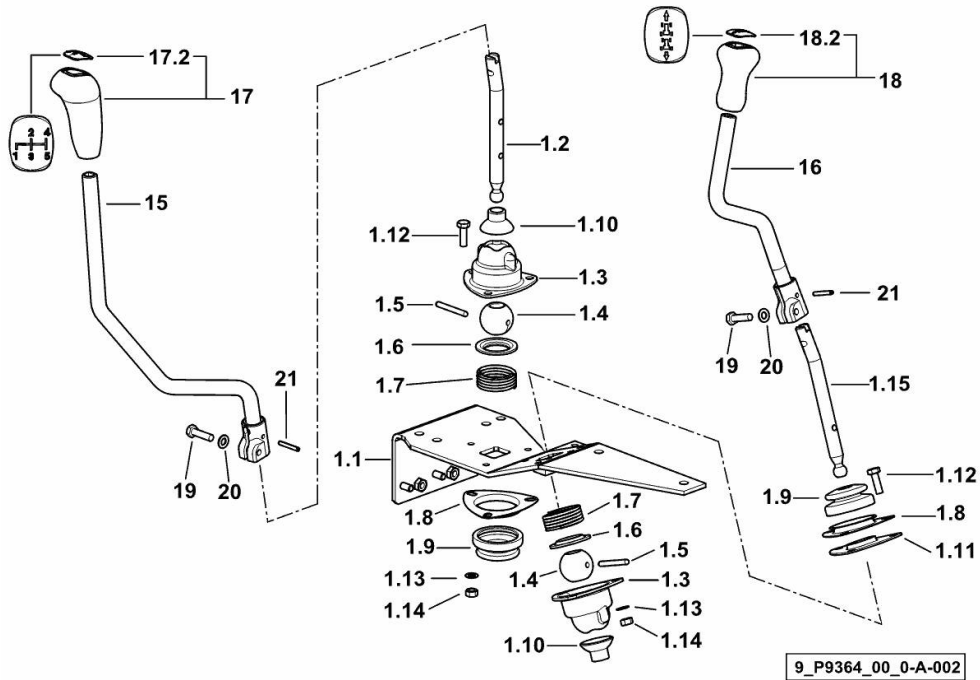


Fig.	P/n	QTY	Name
------	-----	-----	------

Notes:

[XB 85 T ->1001]

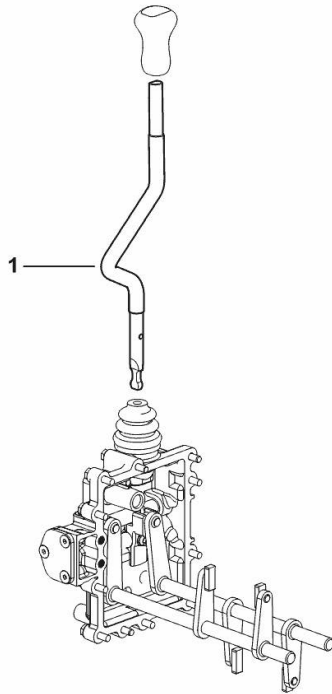
1.1	0.016.4781.3/20	1	support
1.2	0.016.4783.0/30	1	gear lever
1.3	0.467.6412.0	2	support
1.4	0.255.6452.0	2	ball
1.5	2.1699.184.0	2	pin 6x52
1.6	0.255.6465.0	2	cup
1.7	2.4019.309.1/10	2	spring 51x40x4
1.8	0.159.6450.0	2	support
1.9	0.255.6451.0/10	2	bellows
1.10	0.255.6466.0/10	2	guard
1.11	0.290.6455.0/30	1	small plate
1.12	2.0112.209.2	6	screw m 8 p 1.25 x 25
1.13	2.1470.004.2	6	lock washer 8
1.14	2.1011.105.2	6	nut m 8 p.1.25
1.15	0.017.7507.0	1	lever
15	0.016.2115.3/10	1	gear lever
16	0.016.2098.3/10	1	lever
17	0.014.8800.3	1	knob
17.2	0.014.8794.3	1	cap
18	0.015.9762.3	1	knob
18.2	0.010.5546.3/10	1	cap
19	2.0112.211.2	2	screw m 8 p.1.25 x 30
20	2.1310.004.2	2	flat washer 8.4x17
21	2.1631.415.2	2	pin 5x32

RANGE CONTROL

Fig.	P/n	QTY	Name
------	-----	-----	------

Notes:
[XB 85 T ->1001]

1	0.015.9919.0/30	1	lever
---	-----------------	---	-------



9_P9764_01_0-A-001

<https://www.ebooklibonline.com>

Hello dear friend!

Thank you very much for reading.

Enter the link into your browser.

The full manual is available for immediate download.

<https://www.ebooklibonline.com>

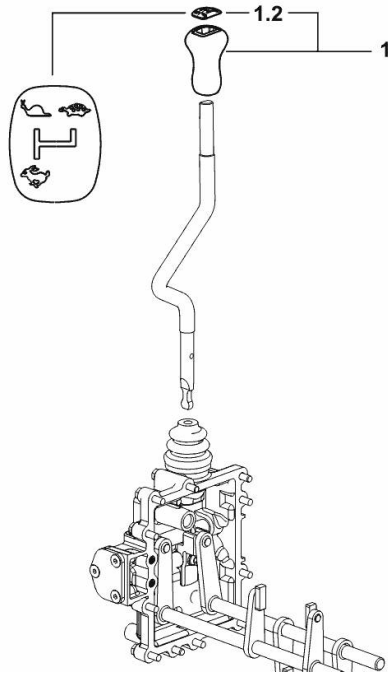
KNOB FOR 3-RANGE GEARBOX

Fig.	P/n	QTY	Name
------	-----	-----	------

Notes:

[XB 85 T ->1001]

1	0.016.4918.3/10	1	knob
1.2	0.016.4919.3	1	cap



9_P9764_03_0-A-001

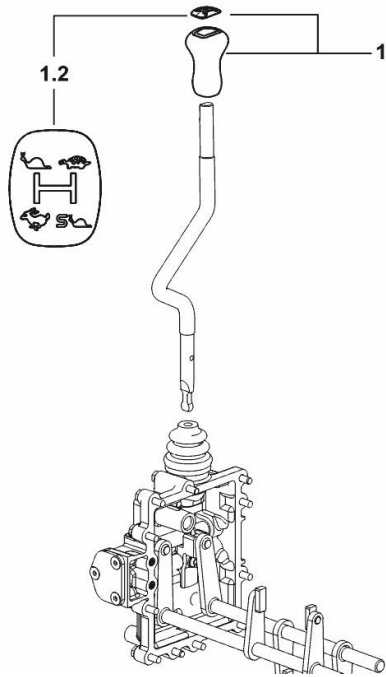
KNOB FOR 4-SPEED RANGE GEARBOX

Fig.	P/n	QTY	Name
------	-----	-----	------

Notes:

[XB 85 T ->1001]

1	0.015.9735.3/10	1	knob
1.2	0.015.9736.3	1	cap



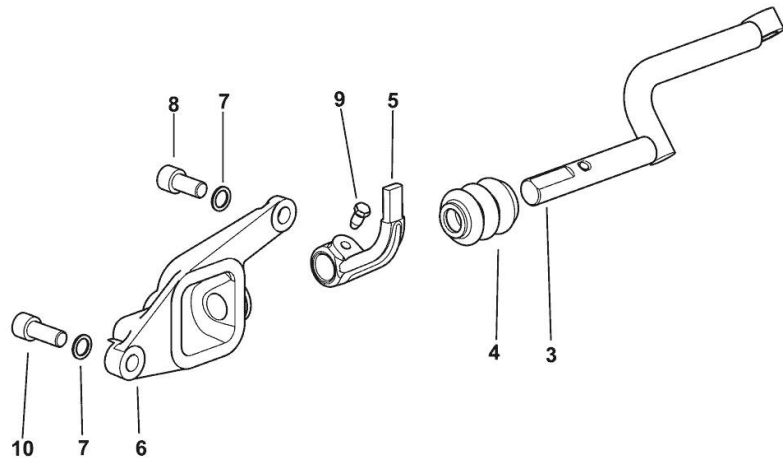
9_P9764_04_0-A-001

Section: G0 - BODYWORK - CAB
REVERSE GEAR CONTROL

Fig.	P/n	QTY	Name
------	-----	-----	------

Notes:
 [XB 85 T ->1001]

3	0.290.6451.2/30	1	lever
4	0.233.6479.0	1	guard
5	0.290.6452.2/20	1	lever
6	0.290.6450.0/40	1	support
7	2.1480.016.2	1	washer 12
8	2.0312.408.2	1	screw m 12 p.1.75 x 25
9	2.0399.019.1	1	screw m 8 p.1 x 16
10	2.0312.410.2	1	screw m 12 p.1.75 x 30



9_R1433_01_0-B-001

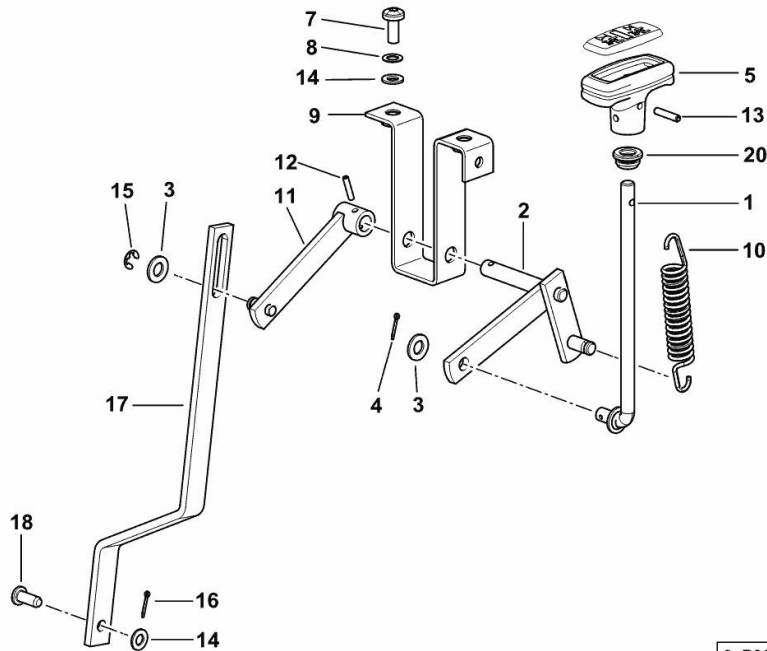
4WD - ENGAGEMENT CONTROL

Fig.	P/n	QTY	Name
------	-----	-----	------

Notes:

[XB 85 T ->1001]

1	0.016.3798.3	1	rod
2	0.290.3840.2/10	1	lever
3	2.1310.006.2	2	flat washer 10.5x21
4	2.1690.207.2	1	split pin 2x18
5	0.009.9885.0/10	1	knob
7	2.0330.507.2	2	screw m 8 p.1.25 x 20
8	2.1470.004.2	2	lock washer 8
9	0.290.3850.2	1	support
10	2.4049.139.1/10	1	spring
11	0.014.1886.2	1	lever
12	2.1632.409.2	1	roll pin 4 x 20
13	2.1630.511.0	1	roll pin 5x24
14	2.1310.004.2	3	flat washer 8.4x17
15	2.1430.008.7	1	circlip 7
16	2.1690.206.2	1	split pin A2x15
17	0.016.3766.0	1	rod
18	2.1671.304.2	1	pin 8x20
20	0.255.6858.0/10	1	rubber plug 18x5



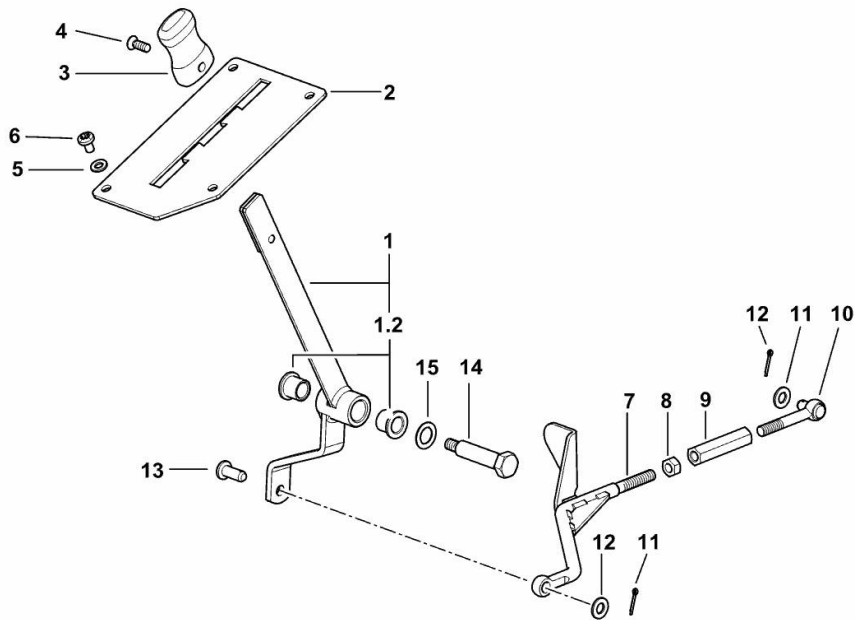
9_P9368_01_0-A-001

P.T.O. SHAFT DRIVE

Fig.	P/n	QTY	Name
------	-----	-----	------

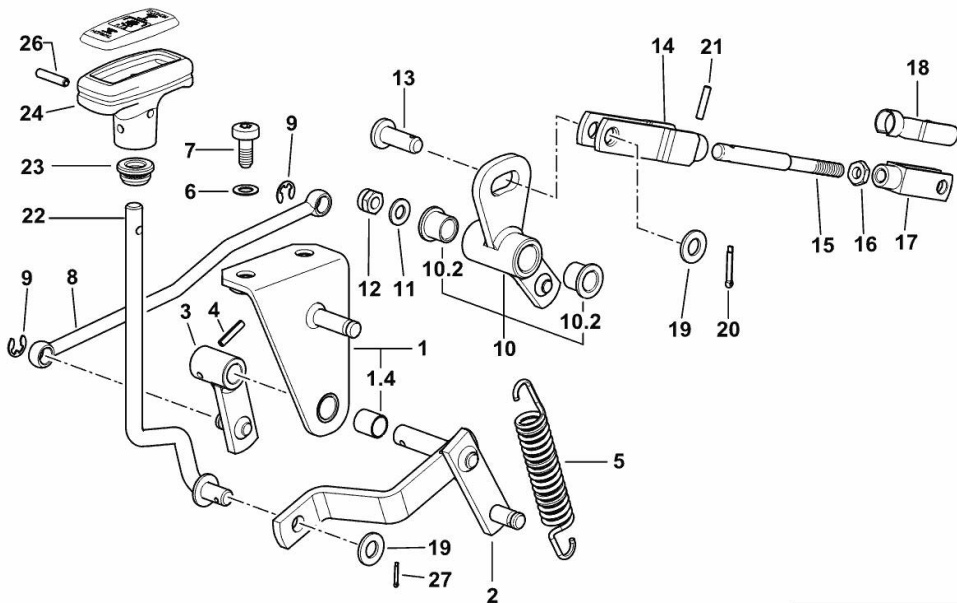
Notes:
[XB 85 T ->1001]

1	0.016.3942.3	1	lever
1.2	2.1559.243.0	2	special bushing 12x16x15
2	0.016.0157.0/10	1	plate
3	0.014.9079.0	1	knob
4	2.0322.406.6	1	screw m 6 p.1.0 x 16
5	2.1310.002.3	4	flat washer 6.4 x 12 x 1.6
6	2.0332.403.3	4	screw m 6 p.1 x 10
7	0.016.3943.2	1	rod
8	2.1011.105.2	1	nut m 8 p.1.25
9	2.1099.167.2	1	nut
10	0.015.3923.2	1	terminal
11	2.1310.004.2	2	flat washer 8.4x17
12	2.1690.207.2	2	split pin 2x18
13	2.1671.304.2	1	pin 8x20
14	2.0399.251.2	1	pin
15	2.1470.007.2	1	lock washer 12



9_P9768_15_0-A-001

P.T.O. - ECONOMICAL CONTROL



9_P9768_05_0-A-001

Fig.	P/n	QTY	Name
Notes:			
[XB 85 T ->1001] 1002 <-			
1	0.016.3181.3	1	bracket
1.4	2.1555.206.0	1	bushing 12 x 14 x 15
2	0.016.2421.2	1	lever
3	0.016.2439.2	1	lever
4	2.1632.409.2	1	roll pin 4 x 20
5	2.4049.139.1/10	1	spring
6	2.1470.004.2	2	lock washer 8
7	2.0362.307.2	2	screw m 8 x 20
8	0.016.3774.0	1	rod
9	2.1430.008.7	2	circlip 7
10	0.016.2247.3	1	lever
10.2	2.1559.243.0	2	special bushing 12x16x15
11	2.1310.004.2	1	flat washer 8.4x17
12	2.1120.105.2	1	self-locking nut m 8 p.1.25
13	2.1671.407.2	1	pin 10 x 28
14	0.016.3999.2	1	fork
15	0.016.4005.0	1	rod
16	2.1011.205.2	1	nut m 8 p.1.25
17	2.3510.014.2	1	fork m 8x32
18	2.1673.007.2	1	pin m 8x32
19	2.1310.006.2	2	flat washer 10.5x21
20	2.1690.307.2	1	split pin 3.2x18
21	2.1630.410.0	1	roll pin 4 x 20
22	0.016.2653.3	1	rod
23	0.255.6858.0/10	1	rubber plug 18x5
24	0.009.9885.0/10	1	knob
26	2.1630.511.0	1	roll pin 5x24
27	2.1690.207.2	1	split pin 2x18



Suggest:

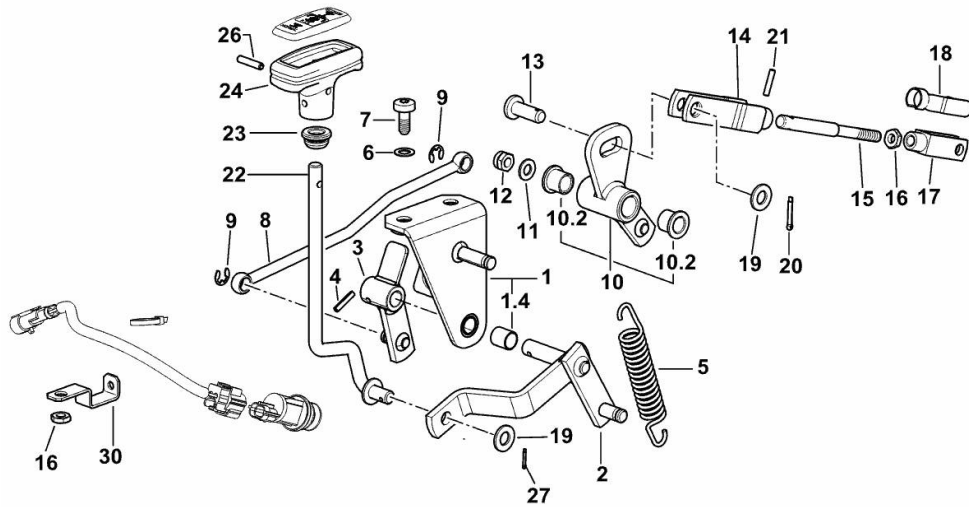
For more complete manuals. Please go to the home page.

<https://www.ebooklibonline.com>

If the above button click is invalid. Please download this document first, and then click the above link to download the complete manual.

Thank you so much for reading

P.T.O. - ECONOMICAL CONTROL



9_P9768_05_0-A-002

Fig.	P/n	QTY	Name
Notes:			
[XB 85 T ->1001]			
1	0.016.3181.3/10	1	bracket
1.4	2.1555.206.0	1	bushing 12 x 14 x 15
2	0.016.2421.2	1	lever
3	0.016.2439.2/10	1	lever
4	2.1632.409.2	1	roll pin 4 x 20
5	2.4049.139.1/10	1	spring
6	2.1470.004.2	2	lock washer 8
7	2.0362.307.2	2	screw m 8 x 20
8	0.016.3774.0	1	rod
9	2.1430.008.7	2	circlip 7
10	0.016.2247.3	1	lever
10.2	2.1559.243.0	2	special bushing 12x16x15
11	2.1310.004.2	1	flat washer 8.4x17
12	2.1120.105.2	1	self-locking nut m 8 p.1.25
13	2.1671.407.2	1	pin 10 x 28
14	0.016.3999.2	1	fork
15	0.016.4005.0	1	rod
16	2.1011.205.2	2	nut m 8 p.1.25
17	2.3510.014.2	1	fork m 8x32
18	2.1673.007.2	1	pin m 8x32
19	2.1310.006.2	2	flat washer 10.5x21
20	2.1690.307.2	1	split pin 3.2x18
21	2.1630.410.0	1	roll pin 4 x 20
22	0.016.2653.3	1	rod
23	0.255.6858.0/10	1	rubber plug 18x5
24	0.009.9885.0/10	1	knob
26	2.1630.511.0	1	roll pin 5x24
27	2.1690.207.2	1	split pin 2x18
30	0.019.0435.0	1	bracket

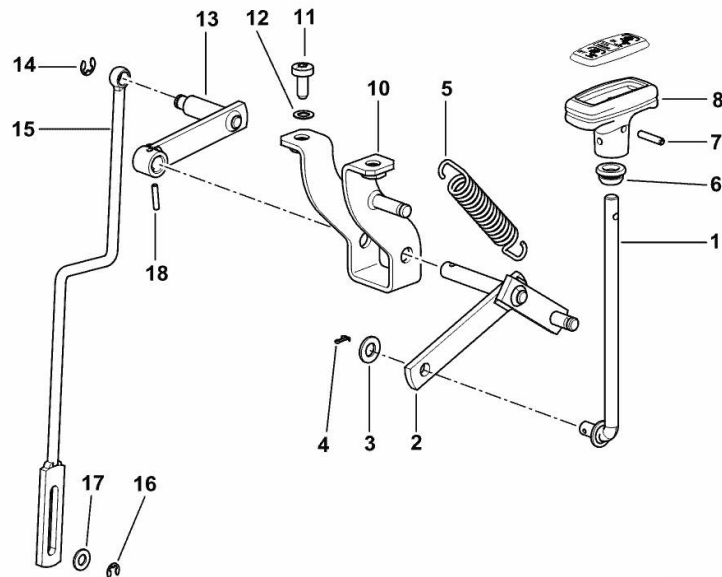
GROUNDSPEED - PTO - CONTROL

Fig.	P/n	QTY	Name
------	-----	-----	------

Notes:

[XB 85 T ->1001]

1	0.016.3798.3	1	rod
2	0.016.3800.2	1	lever
3	2.1310.006.2	1	flat washer 10.5x21
4	2.1690.207.2	1	split pin 2x18
5	2.4049.139.1/10	1	spring
6	0.255.6858.0/10	1	rubber plug 18x5
7	2.1630.511.0	1	roll pin 5x24
8	0.009.9885.0/10	1	knob
10	0.016.3799.3	1	bracket
11	2.0362.307.2	2	screw m 8 x 20
12	2.1470.004.2	2	lock washer 8
13	0.016.3870.2	1	lever
14	2.1430.008.7	1	circlip 7
15	0.016.0120.2	1	rod
16	2.1439.003.0	1	circlip 6, d128
17	2.1310.004.2	1	flat washer 8.4x17
18	2.1630.410.0	1	roll pin 4 x 20



9_P9368_02_0-A-001

<https://www.ebooklibonline.com>

Hello dear friend!

Thank you very much for reading.

Enter the link into your browser.

The full manual is available for immediate download.

<https://www.ebooklibonline.com>