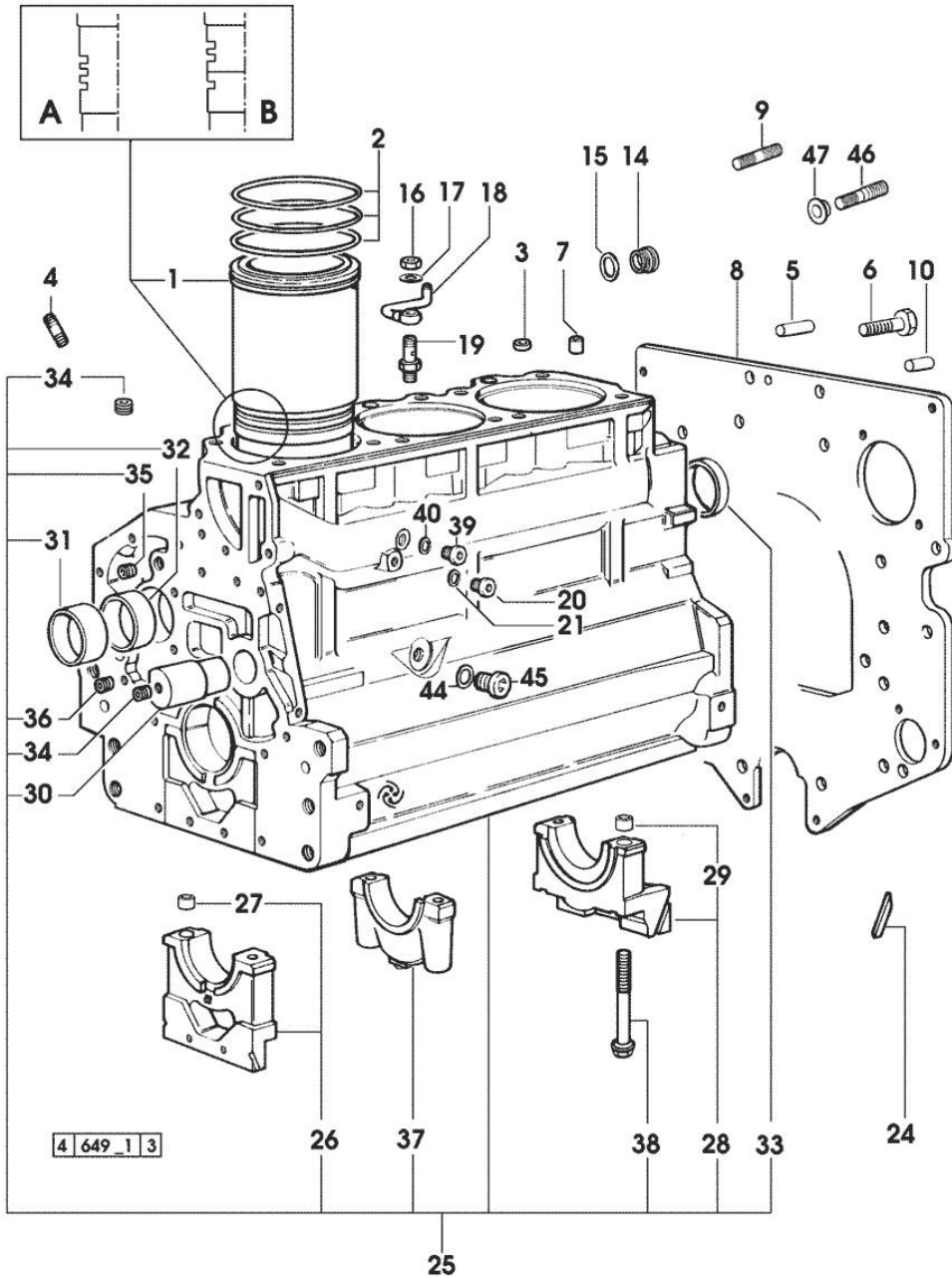
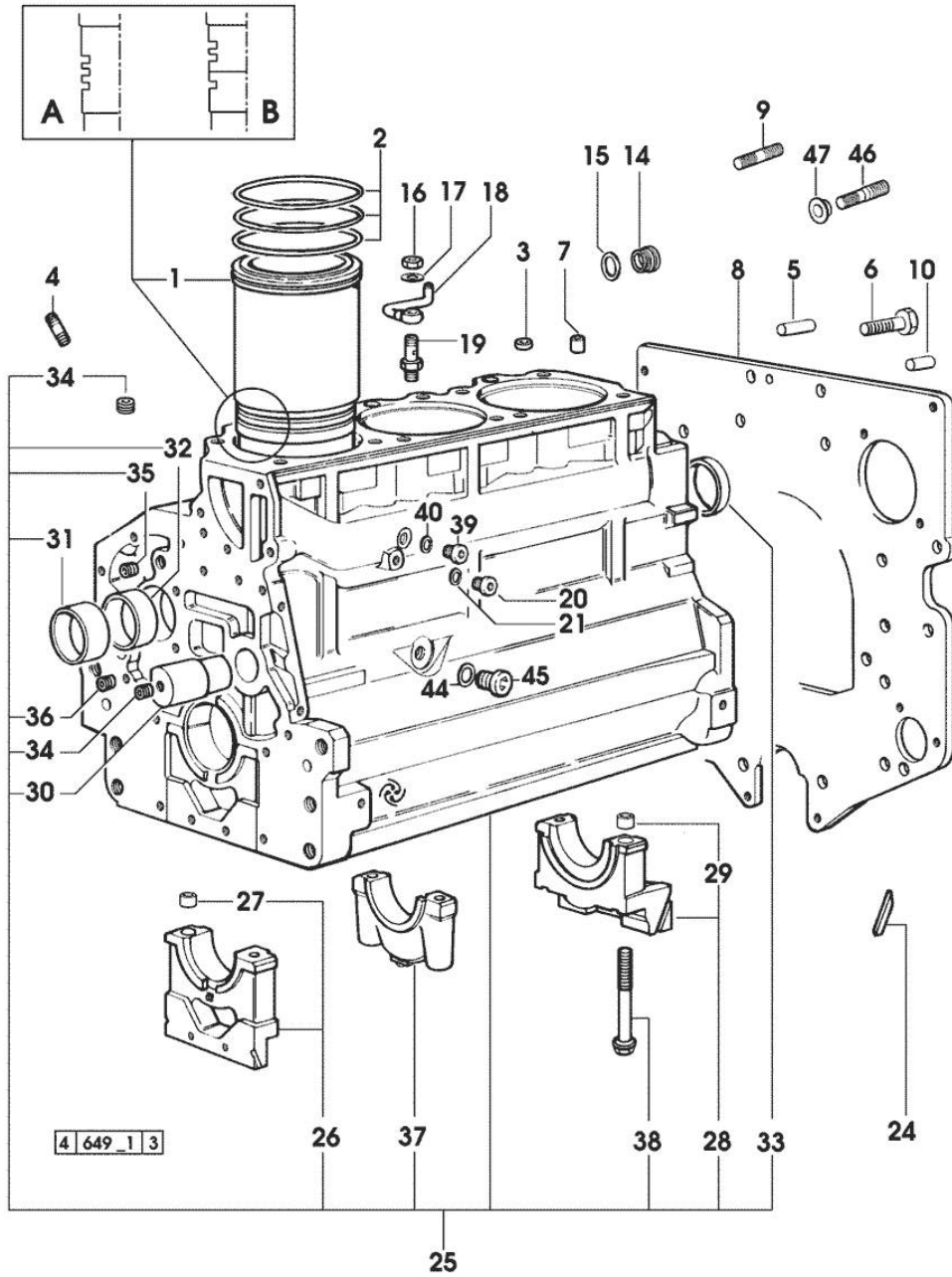


Section: ENGINE  
CRANKCASE



| Fig.          | P/n             | QTY | Name   |
|---------------|-----------------|-----|--|
| <b>Notes:</b> |                 |     |  |
| [XA-606]      |                 |     |  |
| 1             | 0.009.7500.0/10 | 3   | engine cylinder<br>(...) <= A                |
| 1             | 0.011.0183.0/20 | 3   | engine cylinder<br>=> 2775                   |
| 1             | 0.011.0582.0    | 3   | engine cylinder<br>= B<br>=> (...) - 2774 <= |
| 2             | 2.1519.096.0/20 | 9   | special oil seal 107.67x1.78<br>2774 <=      |
| 2             | 2.1539.193.0    | 6   | special oil seal 107.62x2.62<br>=> 2775      |
| 3             | 2.1559.188.2    | 3   | bush 11.4 x 14 x16                           |
| 4             | 2.0432.003.7    | 9   | stud bolt m 8 p.1.25 / p.1 x 20              |
| 5             | 2.1651.917.0    | 1   | cylindrical plug 12x40                       |
| 6             | 2.0112.511.1    | 8   | screw m 14 p.2 x 30                          |
| 7             | 2.1549.154.2    | 3   | bush 4.8x5.8x16                              |
| 8             | 0.007.7752.0/10 | 1   | flange                                       |
| 9             | 2.0432.257.7    | 1   | stud bolt m 12 p.1.75 - 1.25 x 30            |
| 10            | 2.1651.912.0    | 2   | cylindrical plug 12x28                       |
| 14            | 2.3199.405.2    | 1   | plug m 28 p.1.5                              |
| 15            | 2.1539.047.0    | 1   | special oil seal 26.7x1.78                   |
| 16            | 2.1099.108.2    | 3   | special nut m 10 p.1                         |
| 17            | 2.1560.006.0    | 6   | gasket 10.2 x 16                             |
| 18            | 0.086.1550.2    | 3   | sprayer nozzle                               |
| 19            | 0.065.1160.3/20 | 3   | valve  |
| 20            | 2.3199.292.0    | 1   | plug 1/4" gas                                |
| 21            | 2.1560.010.0    | 1   | gasket 14.2 x 20                             |
| 24            | 0.066.1152.0/10 | 4   | gasket                                       |
| 25            | 0.070.1110.6/20 | 1   | crankcase<br>* 2774 <=                       |
|               |                 |     | - N.3 011.0183.0/10 - N.6 2.1539.193.0       |
| 26            | 0.065.1112.7    | 1   | support                                      |
| 27            | 2.1699.165.0    | 1   | bush 12.3x15x16                              |
| 28            | 0.065.1116.3    | 1   | support                                      |
| 29            | 2.1699.165.0    | 1   | bush 12.3x15x16                              |
| 30            | 0.066.1151.0    | 1   | pin  |
| 31            | 0.065.1141.0    | 1   | special bushing 59X55X30                     |
| 32            | 0.065.1140.0    | 3   | special bushing 59X55X20                     |
| 33            | 2.3179.012.0    | 1   | plug 60                                      |
| 34            | 2.3130.001.1    | 9   | plug 1/8" gas                                |
| 35            | 2.3130.002.1    | 2   | plug 1/4" gas                                |

Section: ENGINE  
CRANKCASE



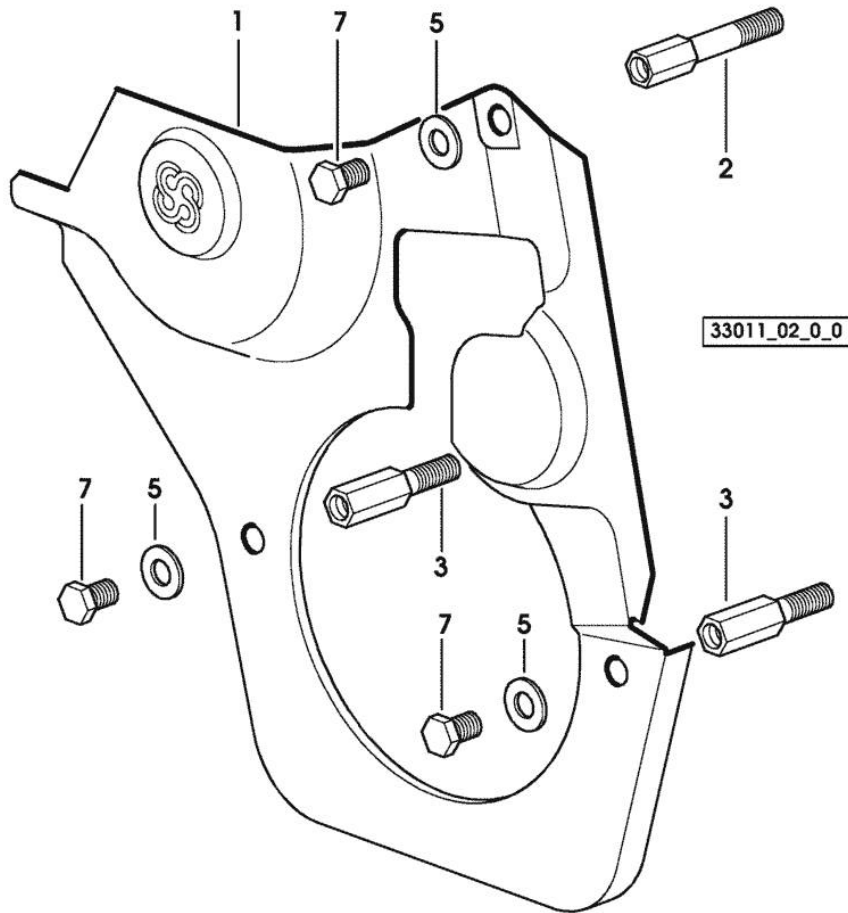
| Fig. | P/n             | QTY | Name                       |
|------|-----------------|-----|----------------------------|
| 36   | 2.3130.003.1    | 2   | plug 3/8" gas              |
| 37   | 0.065.1114.0/10 | 2   | support                    |
| 38   | 0.065.1117.0    | 8   | screw m 12 x 100           |
| 39   | 2.3120.101.0    | 1   | plug m 18 p.1.5<br>=> 2775 |
| 40   | 2.1560.014.0    | 1   | washer 18.2 x 24           |
| 44   | 2.1560.017.0    | 1   | gasket 22.2 x 27           |
| 45   | 2.3120.002.4    | 1   | plug m 22 x 1.5            |
| 46   | 2.0439.250.7    | 1   | stud bolt m 12 / m 10 x 30 |
| 47   | 0.011.9294.0/10 | 1   | bush                       |

Section: ENGINE  
TIMING CASE

| Fig. | P/n | QTY | Name |
|------|-----|-----|------|
|------|-----|-----|------|

Notes:  
[XA-606]

|   |                 |   |                                     |
|---|-----------------|---|-------------------------------------|
| 1 | 0.007.1262.3/50 | 1 | guard                               |
| 2 | 0.007.1271.0/10 | 1 | small column m 8 p.1.25 / L = mm 60 |
| 3 | 0.007.1272.0/10 | 2 | small column m 8 p.1.25 / L = mm 50 |
| 5 | 2.1310.004.2    | 3 | flat washer 8.4x17                  |
| 7 | 2.0112.205.2    | 3 | screw m 8 p.1.25 x 16               |



**<https://www.ebooklibonline.com>**

Hello dear friend!

Thank you very much for reading.

Enter the link into your browser.

The full manual is available for immediate download.

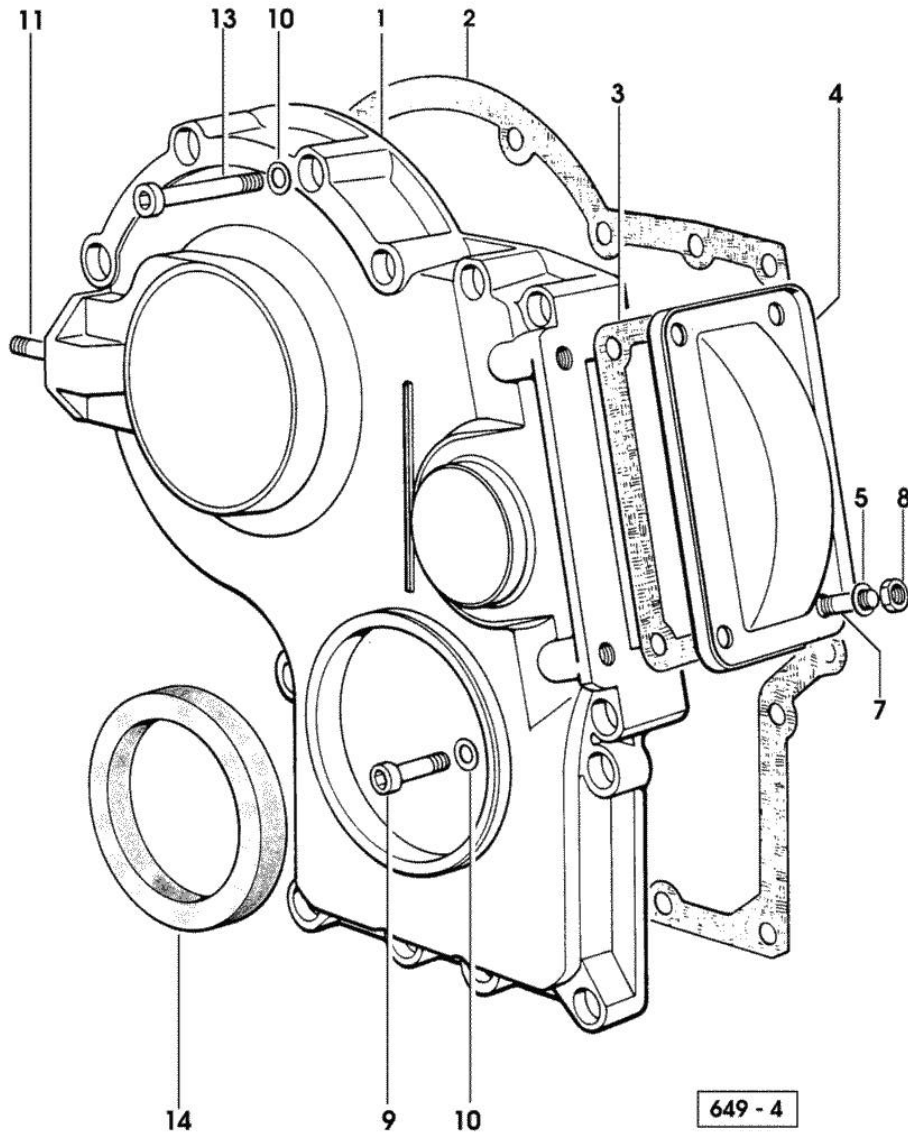
**<https://www.ebooklibonline.com>**

Section: ENGINE  
TIMING CASE

| Fig. | P/n | QTY | Name |
|------|-----|-----|------|
|------|-----|-----|------|

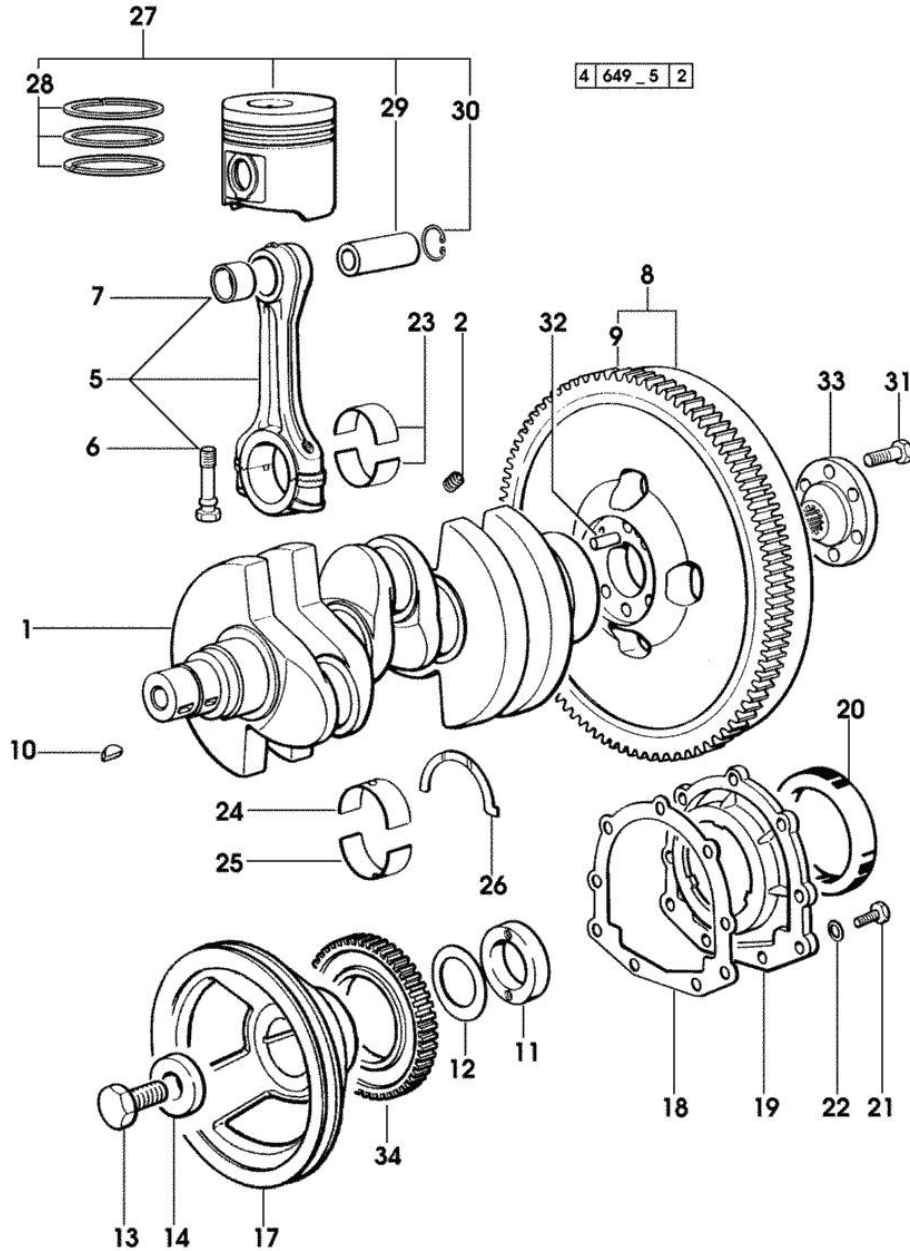
Notes:  
[XA-606]

|    |                 |    |                                 |
|----|-----------------|----|---------------------------------|
| 1  | 0.065.1132.0/60 | 1  | guard                           |
| 2  | 0.065.1150.0/30 | 1  | gasket                          |
| 3  | 0.065.1152.0    | 1  | gasket                          |
| 4  | 0.065.1151.0    | 1  | cover                           |
| 5  | 2.1310.004.2    | 4  | flat washer 8.4x17              |
| 7  | 2.0432.005.7    | 4  | stud bolt m 8 p.1.5 / p.1 x 25  |
| 8  | 2.1011.405.2    | 4  | nut m 8 p.1                     |
| 9  | 2.0312.208.2    | 8  | screw m 8 p.1.25 x 25           |
| 10 | 2.1480.014.1    | 15 | washer 8                        |
| 11 | 2.0432.003.7    | 2  | stud bolt m 8 p.1.25 / p.1 x 20 |
| 13 | 2.0312.214.1    | 3  | screw m 8 p.1.25 x 40           |
| 14 | 2.1529.141.0    | 1  | special oil seal                |



Section: ENGINE

**CRANKSHAFT**

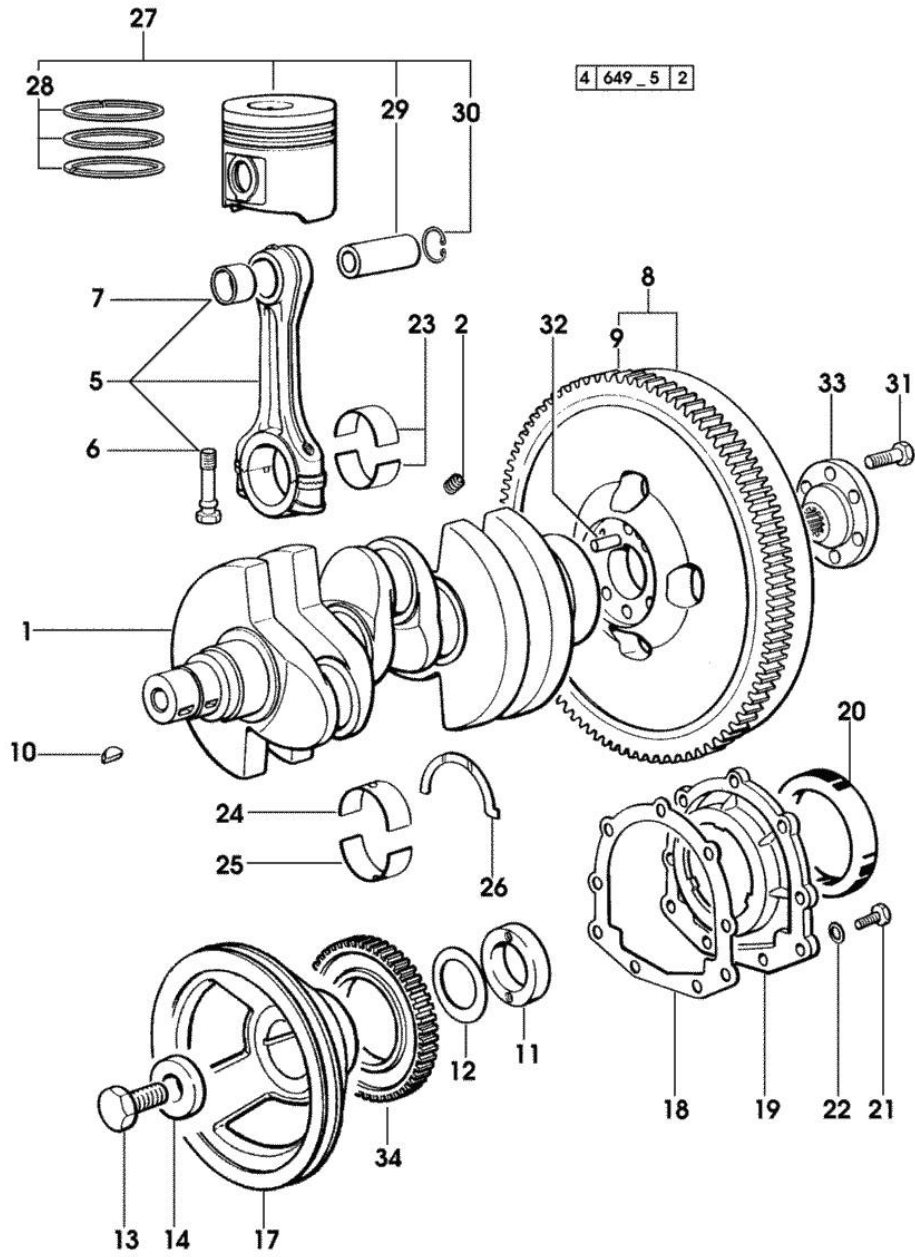


| Fig. | P/n | QTY | Name |
|------|-----|-----|------|
|------|-----|-----|------|

Notes:  
[XA-606]

|    |                 |   |  |
|----|-----------------|---|--|
| 1  | 0.007.1554.0/20 | 1 | crankshaft   |
| 2  | 2.3130.001.1    | 3 | plug 1/8" gas                                      |
| 5  | 0.078.1220.3/30 | 3 | engine connecting rod                              |
| 6  | 2.0399.213.0    | 6 | screw m 12 p.1.25x61.5                             |
| 7  | 2.1559.114.0/10 | 3 | special bushing                                    |
| 8  | 0.007.1883.3/10 | 1 | flywheel   |
| 8  | 0.011.2162.3    | 1 | flywheel<br>- EXPORT U.S.A.                        |
| 9  | 0.069.1242.0    | 1 | crown wheel Z = 121                                |
| 10 | 2.1720.006.0    | 3 | key 4x6.5  |
| 11 | 0.085.1248.0/10 | 1 | hub  |
| 12 | 2.1589.189.0    | 3 | shoulder ring mm 1.00                              |
| 13 | 2.0399.144.7/10 | 1 | screw m 20 p.1.5x51                                |
| 14 | 2.1599.524.7    | 1 | washer 21x60x12                                    |
| 17 | 0.007.1457.0/20 | 1 | pulley<br>- FOR TRACTORS WITHOUT AIR CONDITIONING  |
| 18 | 0.065.1254.0/20 | 1 | gasket   |
| 19 | 0.007.1711.0/10 | 1 | cover  |
| 20 | 2.1529.073.0    | 1 | special oil seal 110x130x13                        |
| 21 | 2.0112.207.2    | 9 | screw m 8 p 1.25 x 20                              |
| 22 | 2.1475.002.2    | 9 | conical washer 8                                   |
| 23 | 0.065.1225.0    | 6 | con.rod half bushing STANDARD - A = 28.75 -> 29.00 |
| 23 | 0.065.1225.7    |   | con.rod half bushing - mm 0.25                     |
| 23 | 0.065.1225.8    |   | con.rod half bushing - mm 0.50                     |
| 24 | 0.065.1215.0    | 4 | main half bushing STANDARD                         |
| 24 | 0.065.1215.7    |   | main half bushing - mm 0.25                        |
| 24 | 0.065.1215.8    |   | main half bushing - mm 0.50                        |
| 25 | 0.065.1216.0    | 4 | main half bushing                                  |
| 25 | 0.065.1216.7    |   | main half bushing - mm 0.25                        |
| 25 | 0.065.1216.8    |   | main half bushing - mm 0.50                        |
| 26 | 0.065.1218.0    | 4 | shim STANDARD                                      |
| 26 | 0.065.1218.7    |   | shim + mm 0.10                                     |
| 26 | 0.065.1218.8    |   | shim + mm 0.15                                     |
| 27 | 0.086.0060.6/30 | 3 | complete piston                                    |
| 27 | 0.379.0060.6    | 3 | complete piston<br>- EXPORT U.S.A.                 |
| 28 | 0.086.0052.6/10 | 3 | piston ring set                                    |
| 29 | 0.078.1236.0    | 3 | piston pin Ø 18 / Ø 35 / L = mm 86                 |
| 30 | 2.1411.014.1    | 6 | circlip 35   |
| 31 | 2.0139.022.2    | 6 | screw m 12 p.1.25x55                               |
| 32 | 2.1652.915.0    | 1 | cylindrical plug 12x35                             |

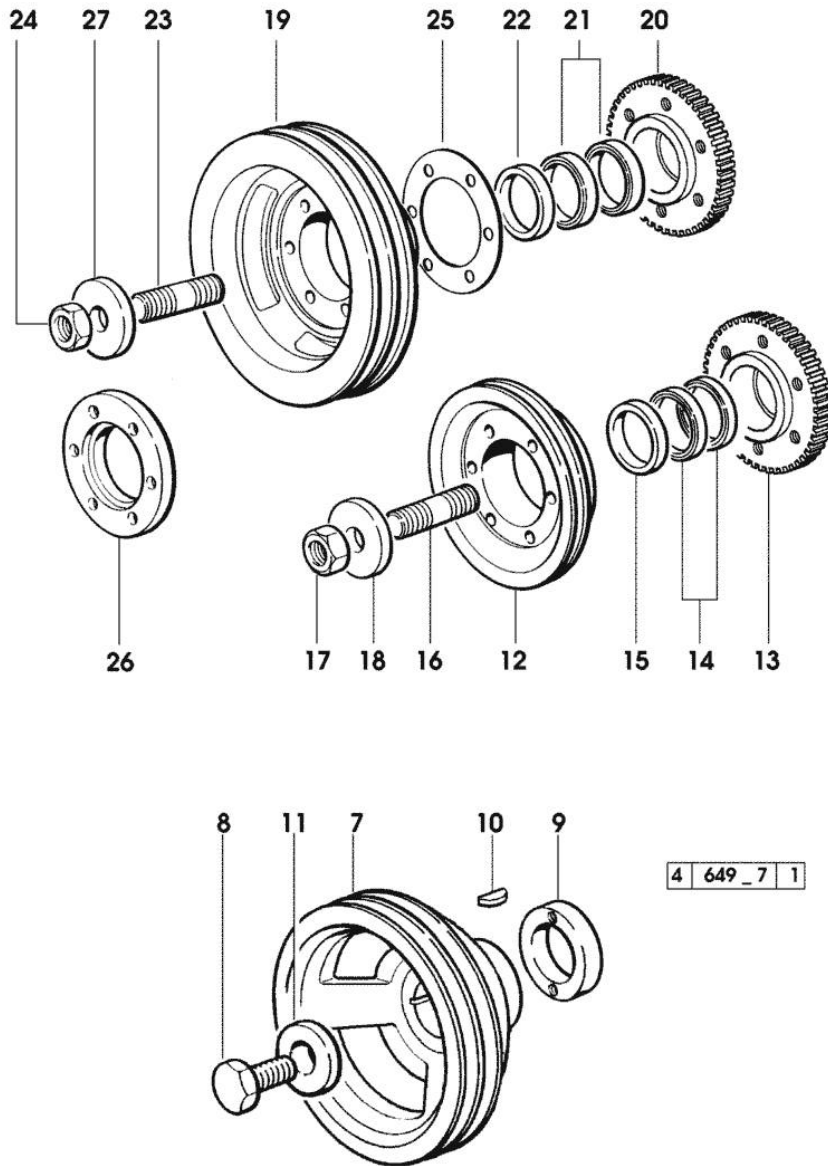
Section: ENGINE  
**CRANKSHAFT**



| Fig. | P/n             | QTY | Name        |
|------|-----------------|-----|-------------|
| 33   | 0.255.2525.0/10 | 1   | flange      |
| 34   | 0.011.3531.0    | 1   | gear Z = 48 |

Section: ENGINE

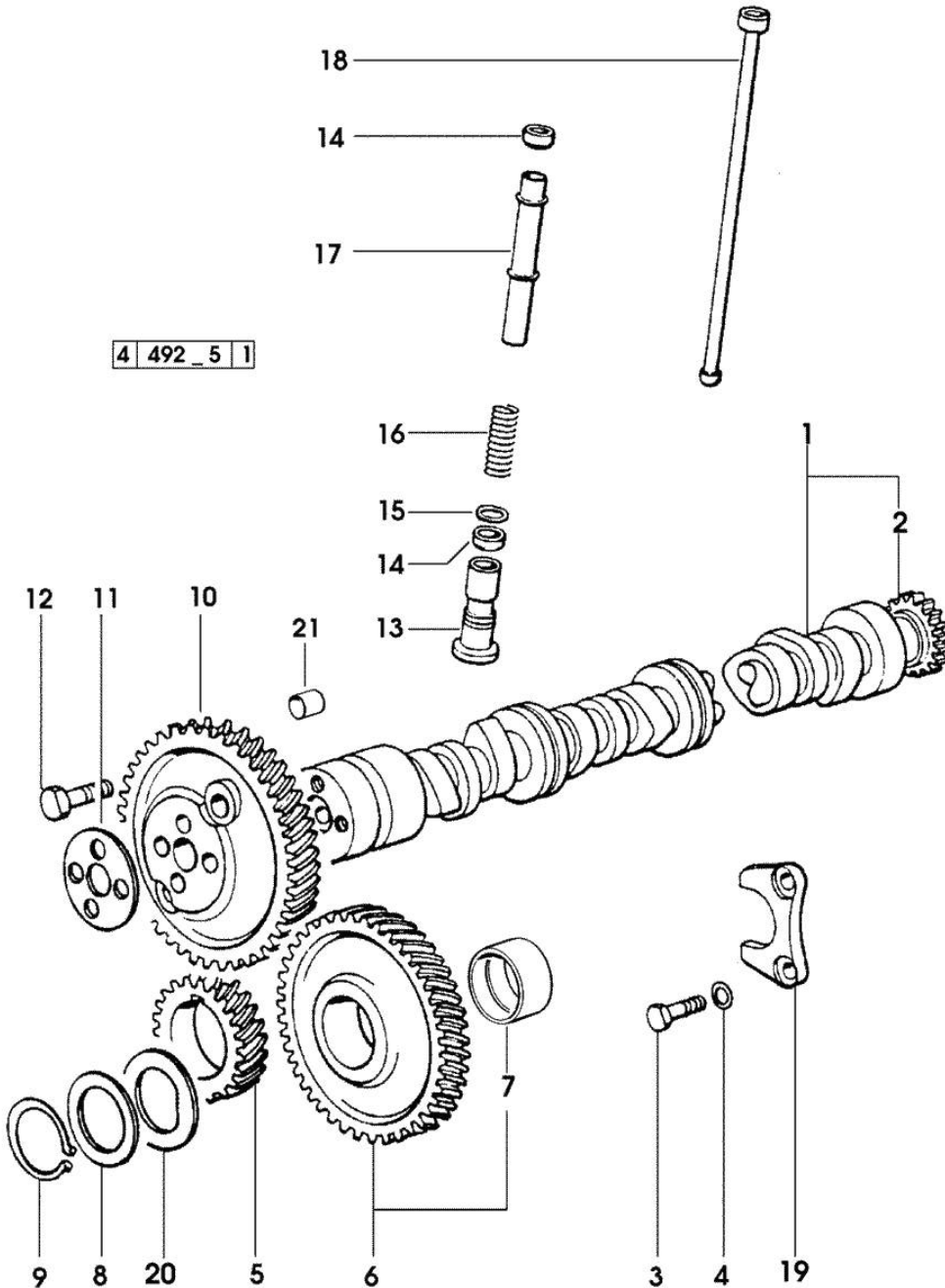
**ENGINE SHAFT - PULLEYS**



| Fig.          | P/n             | QTY | Name  |
|---------------|-----------------|-----|---|
| <b>Notes:</b> |                 |     |   |
| [XA-606]      |                 |     |   |
| 7             | 0.007.1458.0/30 | 1   | pulley<br>- FOR TRACTORS WITH AIR CONDITIONING    |
| 8             | 2.0399.144.7/10 | 1   | screw m 20 p.1.5x51                               |
| 9             | 0.085.1248.0/10 | 1   | hub   |
| 10            | 2.1720.006.0    | 1   | key 4x6.5   |
| 11            | 2.1599.524.7    | 1   | washer 21x60x12                                   |
| 12            | 0.082.1244.0/10 | 1   | pulley<br>- FOR TRACTORS WITHOUT AIR CONDITIONING |
| 13            | 0.011.3515.0/10 | 1   | hub Z = 48  |
| 14            | 0.065.1256.0    | 2   | ring 45x52  |
| 15            | 2.1579.865.0    | 4   | spacer 45.2x51.8x10                               |
| 16            | 2.0439.195.7    | 1   | stud bolt m 20 p.1.5x80                           |
| 17            | 2.1019.094.7    | 1   | nut m 20 p.1.5                                    |
| 18            | 2.1599.524.7    | 1   | washer 21x60x12                                   |
| 19            | 0.010.4274.0    | 1   | pulley<br>- FOR TRACTORS WITH AIR CONDITIONING    |
| 20            | 0.011.3515.0/10 | 1   | hub Z = 48  |
| 21            | 0.065.1256.0    | 2   | ring 45x52  |
| 22            | 2.1579.865.0    | 1   | spacer 45.2x51.8x10                               |
| 23            | 2.0439.195.7    | 1   | stud bolt m 20 p.1.5x80                           |
| 24            | 2.1019.094.7    | 1   | nut m 20 p.1.5                                    |
| 25            | 2.1589.137.0    | 3   | shoulder ring 71x110x1                            |
| 26            | 0.089.1253.0/10 | 1   | spacer  |
| 27            | 2.1599.524.7    | 1   | washer 21x60x12                                   |

Section: ENGINE

**CAMSHAFT**



| Fig. | P/n | QTY | Name |
|------|-----|-----|------|
|------|-----|-----|------|

Notes:  
[XA-606]

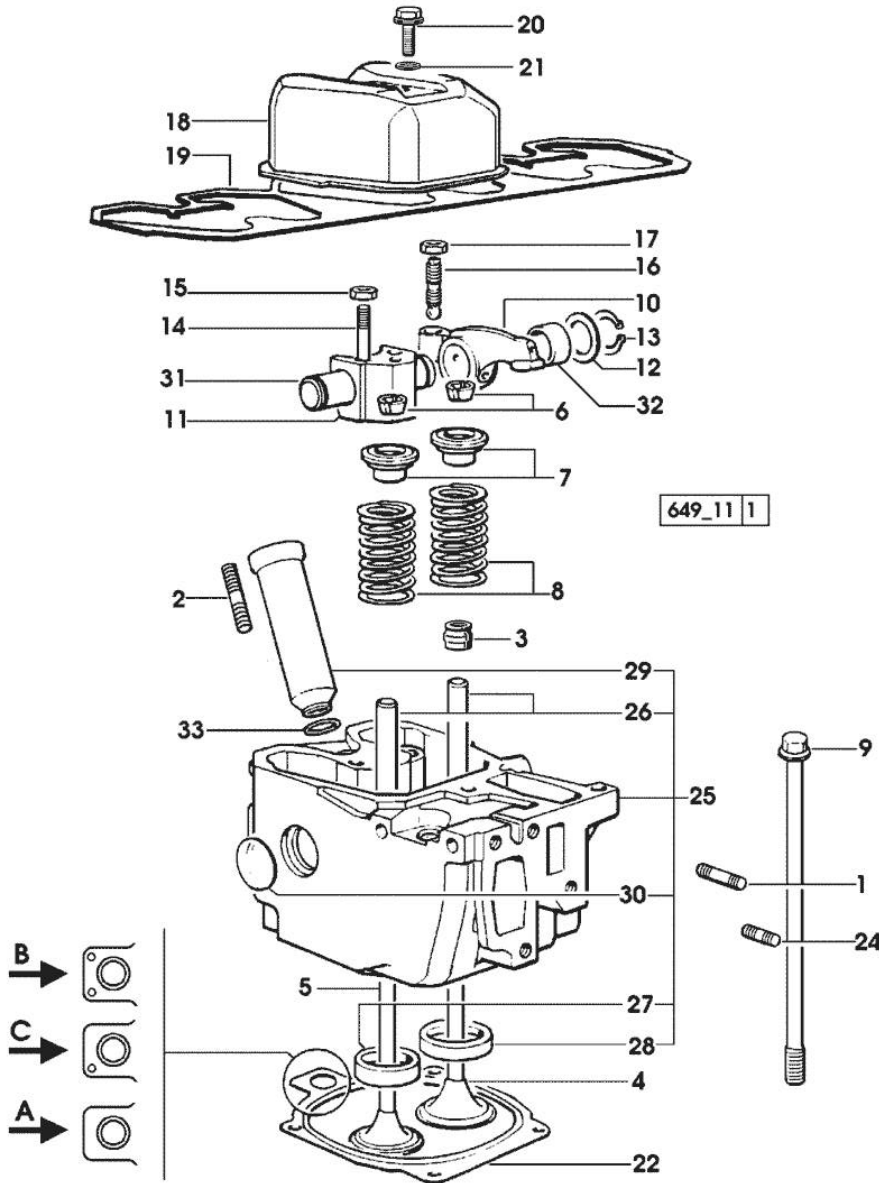
|    |                 |    |   |
|----|-----------------|----|---|
| 1  | 0.009.7456.3/10 |    | camshaft<br>- EXPORT U.S.A.                       |
| 1  | 0.070.1310.3/40 | 1  | camshaft  |
| 2  | 0.065.1324.0/10 | 1  | gear Z = 32                                       |
| 3  | 2.0312.206.2    | 2  | screw m 8 p 1.25 x 20                             |
| 4  | 2.1480.014.1    | 2  | washer 8  |
| 5  | 0.065.1323.0/30 | 1  | gear Z = 29                                       |
| 6  | 0.007.1177.3/10 |    | gear z = 57<br>- WITH RED IDENTIFICATION STAMP    |
| 6  | 0.007.1178.3/10 |    | gear z = 57<br>- WITH YELLOW IDENTIFICATION STAMP |
| 6  | 0.007.1179.3/10 |    | gear z = 57<br>- WITH GREEN IDENTIFICATION STAMP  |
| 7  | 2.1559.185.0/10 | 1  | bushing   |
| 8  | 0.065.1352.0    | 1  | shim  |
| 9  | 2.1410.016.1    | 1  | circlip 40  |
| 10 | 0.065.1354.0/20 | 1  | gear z=58   |
| 11 | 0.065.1350.0    | 1  | small disc  |
| 12 | 2.0132.207.2    | 4  | screw m 10 p.1 x 25                               |
| 13 | 0.065.1330.0    | 6  | tappets   |
| 14 | 2.1569.114.0/10 | 12 | gasket 14x18.5x8                                  |
| 15 | 2.1599.437.0    | 6  | shoulder ring                                     |
| 16 | 2.4019.300.1/10 | 6  | spring 18.5x52x2                                  |
| 17 | 0.065.1332.0    | 6  | sleeve  |
| 18 | 0.065.1331.2    | 6  | rod   |
| 19 | 0.065.1353.0    | 1  | small plate                                       |
| 20 | 0.065.1351.0    | 2  | shoulder ring                                     |
| 21 | 2.1559.398.0    | 1  | bushing 10.5x13x12                                |

Section: ENGINE  
CYLINDER HEAD

| Fig. | P/n | QTY | Name |
|------|-----|-----|------|
|------|-----|-----|------|

Notes:  
[XA-606]

|    |                 |    |                                    |
|----|-----------------|----|------------------------------------|
| 1  | 2.0432.011.7    | 3  | stud bolt m 8 p.1.25 / p.1 x 40    |
| 2  | 2.0432.161.7    | 3  | stud bolt m 10 p.1.5 / p.1.25 x 40 |
| 3  | 2.1519.117.0    | 6  | special oil seal                   |
| 4  | 0.010.6016.0    | 3  | inlet valve mm 43.63 / Ø mm 9      |
| 5  | 0.066.1421.0    | 3  | exhaust valve                      |
| 6  | 0.074.1423.0    | 12 | conical valve cotter               |
| 7  | 0.066.1425.0    | 6  | cup                                |
| 8  | 2.4019.287.0    | 6  | spring                             |
| 9  | 0.066.1443.0/10 | 12 | screw                              |
| 10 | 0.066.1432.0    | 6  | rocker arm                         |
| 11 | 0.066.1430.0/10 | 3  | support                            |
| 12 | 2.1599.432.0    | 6  | shoulder ring                      |
| 13 | 2.1410.055.1    | 6  | circlip 19                         |
| 14 | 2.0432.163.7    | 6  | stud bolt m 10 p.1.5 / p.1.25 x 45 |
| 15 | 2.1011.421.2    | 6  | nut m 10 p.1.25                    |
| 16 | 0.021.1434.0    | 6  | screw                              |
| 17 | 2.1011.405.2    | 6  | nut m 8 p.1                        |
| 18 | 0.007.1139.0/10 | 3  | small cap                          |
| 19 | 0.069.1450.0/30 | 1  | tappet gasket                      |
| 20 | 2.0399.130.2/10 | 3  | screw m 8x36x44                    |
| 21 | 2.1569.170.0/10 | 3  | gasket 8.2 x 14                    |
| 22 | 0.078.1451.0/40 |    | head gasket -A-                    |
| 22 | 0.078.1452.0/30 |    | head gasket -B-                    |
| 22 | 0.078.1453.0/40 |    | head gasket -C-                    |
| 24 | 2.0432.005.7    | 3  | stud bolt m 8 p.1.5 / p.1 x 25     |
| 25 | 0.012.2693.3/10 | 3  | engine head                        |
| 26 | 0.007.1779.0/10 | 6  | valve guide                        |
| 27 | 0.066.1427.0    | 3  | valve seat                         |
| 28 | 0.078.1426.0    | 3  | valve seat                         |
| 29 | 0.010.6041.0    | 3  | bush                               |
| 30 | 2.3170.012.1    | 6  | expansion plug 30                  |
| 31 | 0.066.1431.0    | 3  | pin                                |
| 32 | 2.1559.021.0/40 | 6  | bushing 15x19x22                   |
| 33 | 2.1530.051.0    | 3  | oil seal 20.22x3.53                |

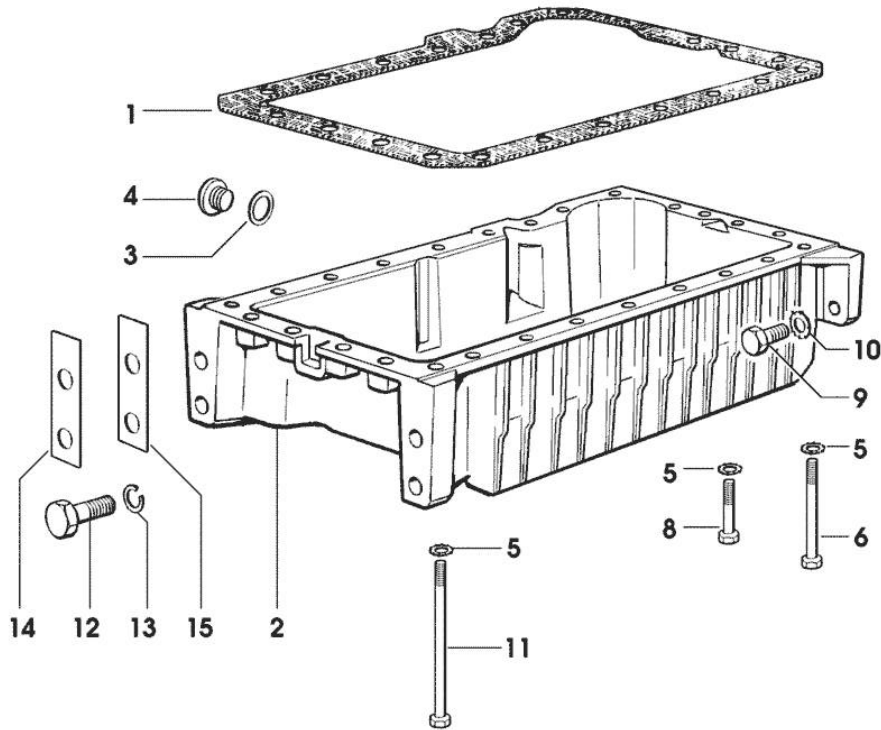


Section: ENGINE  
**LUBRICATION**

| Fig. | P/n | QTY | Name |
|------|-----|-----|------|
|------|-----|-----|------|

Notes:  
 [XA-606]

|    |                 |    |                                    |
|----|-----------------|----|------------------------------------|
| 1  | 0.007.0614.0/10 | 1  | gasket<br>- X 60HP                 |
| 1  | 0.065.1550.0/10 | 1  | gasket<br>- X 70HP                 |
| 2  | 0.007.1422.0/40 | 1  | oil sump<br>- X 60HP               |
| 2  | 0.007.1748.0/10 | 1  | oil sump<br>- X 70HP               |
| 3  | 2.1560.054.0    | 1  | gasket 21 x 26<br>- X 60HP         |
| 4  | 2.3199.001.2    | 1  | plug 1/2" gas<br>- X 60HP          |
| 5  | 2.1470.004.2    | 22 | lock washer 8<br>- X 60HP          |
| 6  | 2.0112.226.2    | 7  | screw m 8 p.1.25 x 85              |
| 8  | 2.0112.215.2    | 17 | screw m 8 p.1.25 x 40<br>- X 60HP  |
| 9  | 2.0112.411.2    | 4  | screw m 12 p.1.75 x 30<br>- X 60HP |
| 10 | 2.1470.007.2    | 4  | lock washer 12<br>- X 60HP         |
| 11 | 2.0112.239.2    | 2  | screw m 8 p.1.25 x 150             |
| 12 | 2.0112.720.1    | 4  | screw m 18 p.2.5 x 55              |
| 13 | 2.1475.007.7    | 4  | washer 18                          |
| 14 | 0.008.8586.0/10 | 4  | shim mm 0.20                       |
| 15 | 0.008.8587.0/10 | 8  | shim mm 0.50                       |



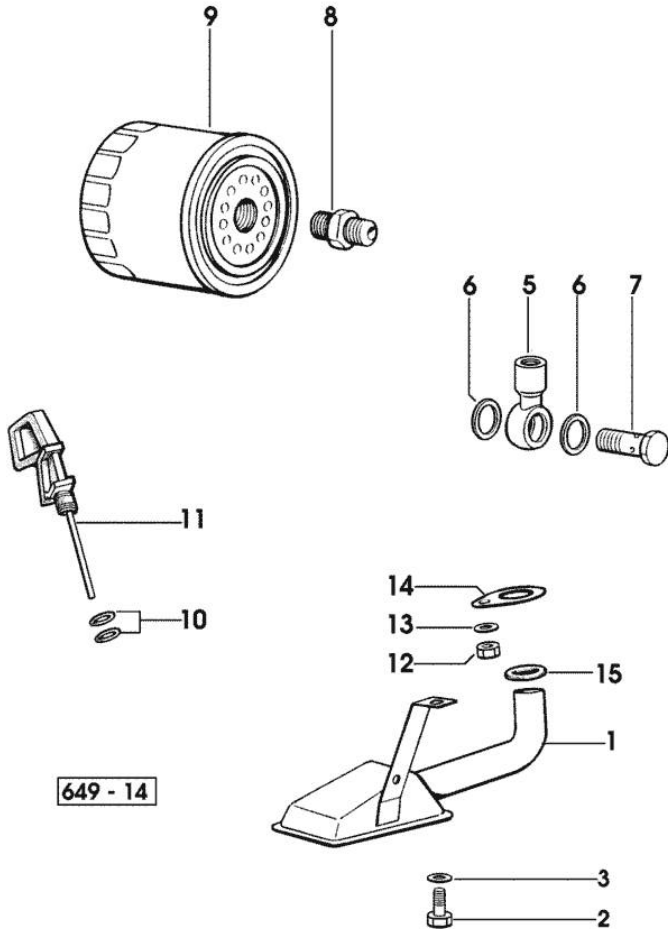
649 - 13

Section: ENGINE  
**LUBRICATION**

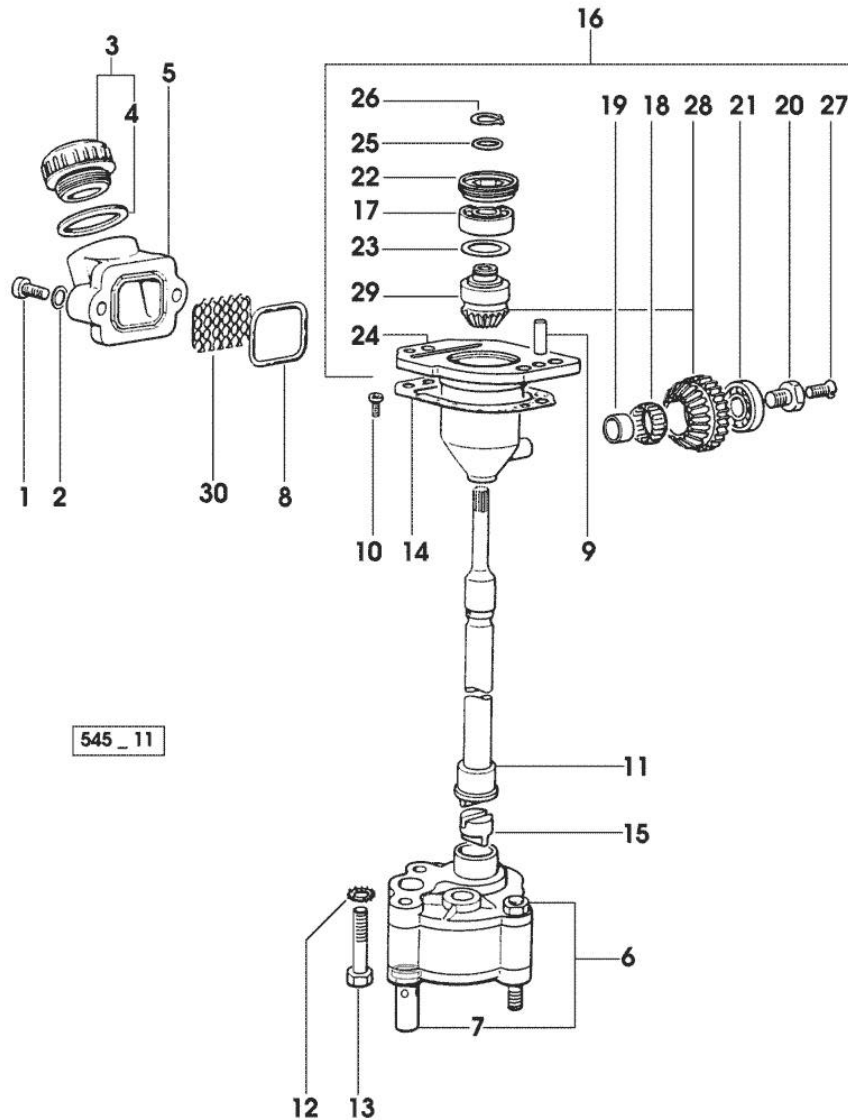
| Fig. | P/n | QTY | Name |
|------|-----|-----|------|
|------|-----|-----|------|

Notes:  
 [XA-606]

|    |                 |   |                               |
|----|-----------------|---|-------------------------------|
| 1  | 0.007.1425.3    | 1 | tube                          |
| 2  | 2.0112.205.2    | 1 | screw m 8 p.1.25 x 16         |
| 3  | 2.1470.004.2    | 1 | lock washer 8                 |
| 5  | 2.3249.014.2    | 1 | pipe fitting m 12 p.1.5       |
| 6  | 2.1560.008.0    | 3 | gasket 12.2 x 18              |
| 7  | 2.3339.448.2    | 1 | pipe union m 12 p.1.75        |
| 8  | 2.3339.307.0    | 1 | pipe fitting m 22 p.1.5-3/4"  |
| 9  | 0.044.1567.0    | 1 | oil filter element            |
| 10 | 2.1539.065.0    | 2 | special oil seal 8.73 x 1.78  |
| 11 | 0.085.1513.2/20 | 1 | dipstick                      |
| 12 | 2.1011.105.2    | 1 | nut m 8 p.1.25                |
| 13 | 2.1470.004.2    | 1 | lock washer 8                 |
| 14 | 0.065.1538.0    | 1 | flange                        |
| 15 | 2.1539.040.0    | 1 | special oil seal 21.82 x 3.53 |



Section: ENGINE  
LUBRICATION



545\_11

| Fig. | P/n | QTY | Name |
|------|-----|-----|------|
|------|-----|-----|------|

Notes:  
[XA-606]

|    |                 |   |                                  |
|----|-----------------|---|----------------------------------|
| 1  | 2.0312.206.2    | 2 | screw m 8 p 1.25 x 20            |
| 2  | 2.1480.014.1    | 2 | washer 8                         |
| 3  | 0.041.1135.4    | 1 | plug 1" gas                      |
| 4  | 2.1569.072.0    | 1 | gasket 32 x 39.5 x 2             |
| 5  | 0.065.1565.0/10 | 1 | pipe union                       |
| 6  | 0.010.5441.4/10 | 1 | oil pump<br>- X 70HP             |
| 6  | 0.010.5481.4    | 1 | oil pump<br>- X 60HP             |
| 7  | 0.065.1552.3/60 | 1 | valve                            |
| 8  | 2.1539.042.0    | 1 | special oil seal 47.35x1.78      |
| 9  | 2.1651.711.0    | 2 | pin 8 x 14                       |
| 10 | 2.0169.005.2    | 2 | screw m 6 p.1 x 12               |
| 11 | 0.065.1569.0/40 | 1 | shaft                            |
| 12 | 2.1470.006.2    | 2 | lock washer 10                   |
| 13 | 2.0112.323.2    | 2 | screw m 10 p.1.5x70<br>- X 60HP  |
| 13 | 2.0112.324.2    | 2 | screw m 10 p.1.5x75<br>- X 70HP  |
| 14 | 0.065.1560.0/20 | 2 | gasket                           |
| 15 | 0.065.1562.0/10 | 1 | joint                            |
| 16 | 0.075.1551.4/20 | 1 | support                          |
| 17 | 2.2020.001.0    | 1 | ball bearing 15 x 32 x 8.00      |
| 18 | 2.2725.016.0    | 1 | roller cage 15 x 21 x 12         |
| 19 | 2.2680.020.0    | 1 | ring 12 x 15 x 12                |
| 20 | 2.0399.128.2/10 | 1 | screw m 8 p.1 x 8                |
| 21 | 2.2030.002.0    | 1 | ball bearing 12 x 28 x 8         |
| 22 | 2.1219.025.2/10 | 1 | ring nut m 36 p.1.5              |
| 23 | 2.1589.148.0    | 1 | shoulder ring 28.2 x 31.8 x 0.5  |
| 23 | 2.1589.150.0    | 2 | shoulder ring 28.2 x 31.8 x 0.1  |
| 23 | 2.1589.151.0    | 2 | shoulder ring 28.2 x 31.8 x 0.15 |
| 24 | 0.075.1551.3/30 | 1 | support                          |
| 25 | 2.1589.146.0    | 2 | shoulder ring 15.2 x 19 x 0.15   |
| 25 | 2.1589.147.0    | 2 | shoulder ring 15.2 x 19 x 0.10   |
| 25 | 2.1589.153.0    | 1 | shoulder ring 15.2 x 19 x 1.00   |
| 26 | 2.1410.057.1    | 1 | circlip 15                       |
| 27 | 2.0342.007.2    | 1 | screw m 4 p.0.7x25               |
| 28 | 0.065.1558.6/10 | 1 | bevel drive                      |
| 29 | 0.065.1559.0    | 1 | bush                             |
| 30 | 0.065.1567.0/10 | 1 | filter                           |





**Suggest:**

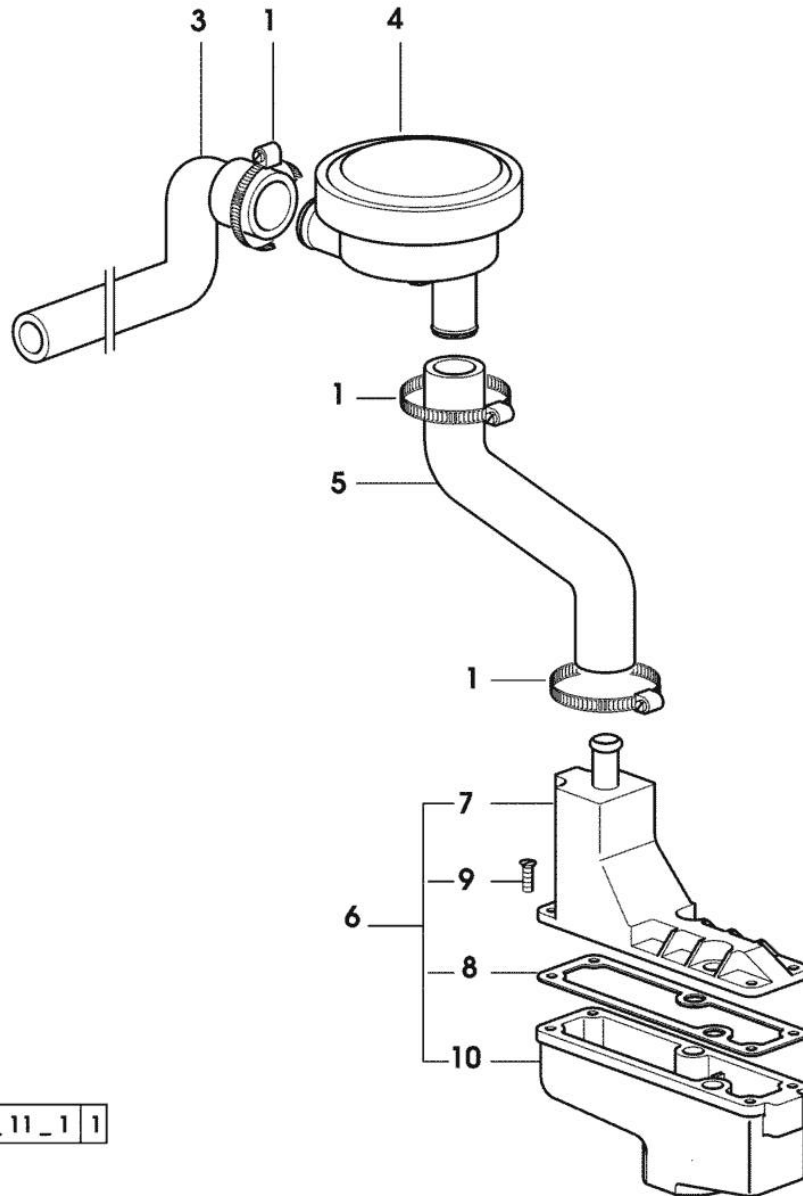
**For more complete manuals. Please go to the home page.**

**<https://www.ebooklibonline.com>**

**If the above button click is invalid. Please download this document first, and then click the above link to download the complete manual.**

**Thank you so much for reading**

Section: ENGINE  
**LUBRICATION**



| Fig. | P/n | QTY | Name |
|------|-----|-----|------|
|------|-----|-----|------|

Notes:  
 [XA-606]

|    |                 |   |                  |
|----|-----------------|---|------------------|
| 1  | 2.6850.004.0    | 4 | clamp            |
| 3  | 0.011.0996.0    | 1 | tube<br>- X 60HP |
| 3  | 0.011.4209.0    | 1 | tube<br>- X 70HP |
| 4  | 0.010.6507.0    | 1 | valve            |
| 5  | 0.011.1026.0    | 1 | tube<br>- X 60HP |
| 5  | 0.011.4210.0    | 1 | tube<br>- X 70HP |
| 6  | 0.011.1030.4    | 1 | sediment bowl    |
| 7  | 0.011.1028.3    | 1 | cover            |
| 8  | 0.066.1554.0/10 | 1 | gasket           |
| 9  | 2.0351.203.6    | 4 | screw 3.5x9.5    |
| 10 | 0.011.1030.0    | 1 | sediment bowl    |

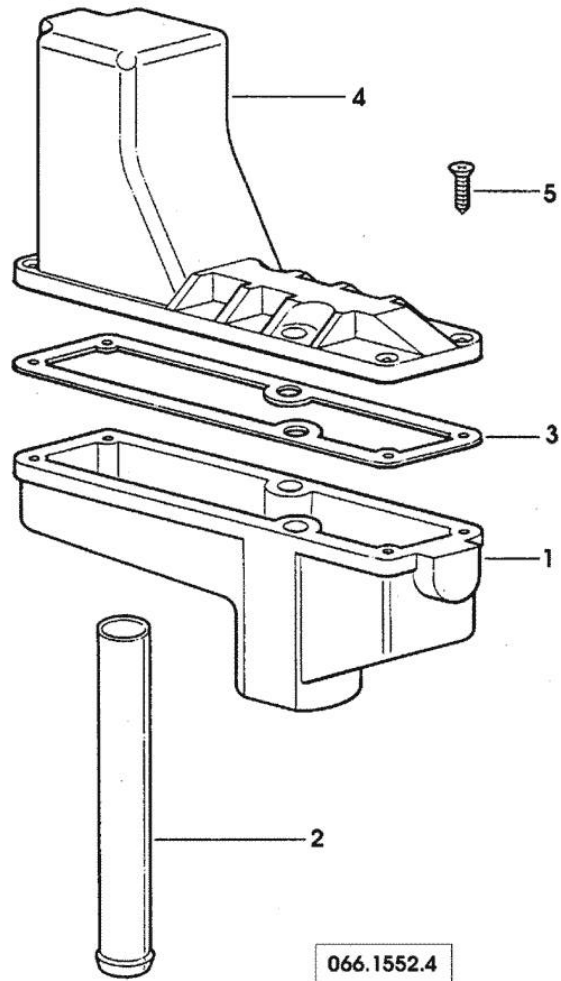
4 566\_11\_1 1

**OIL VAPORS SEDIMENT BOWL PARTS**

| Fig. | P/n | QTY | Name |
|------|-----|-----|------|
|------|-----|-----|------|

Notes:  
[XA-606]

|   |                 |   |               |
|---|-----------------|---|---------------|
| 1 | 0.066.1552.0    | 1 | sediment bowl |
| 2 | 0.066.1555.0    | 1 | tube          |
| 3 | 0.066.1554.0/10 | 1 | gasket        |
| 4 | 0.066.1553.0    | 1 | cover         |
| 5 | 2.0351.203.2    | 4 | screw 3.5x9.5 |



**<https://www.ebooklibonline.com>**

Hello dear friend!

Thank you very much for reading.

Enter the link into your browser.

The full manual is available for immediate download.

**<https://www.ebooklibonline.com>**