

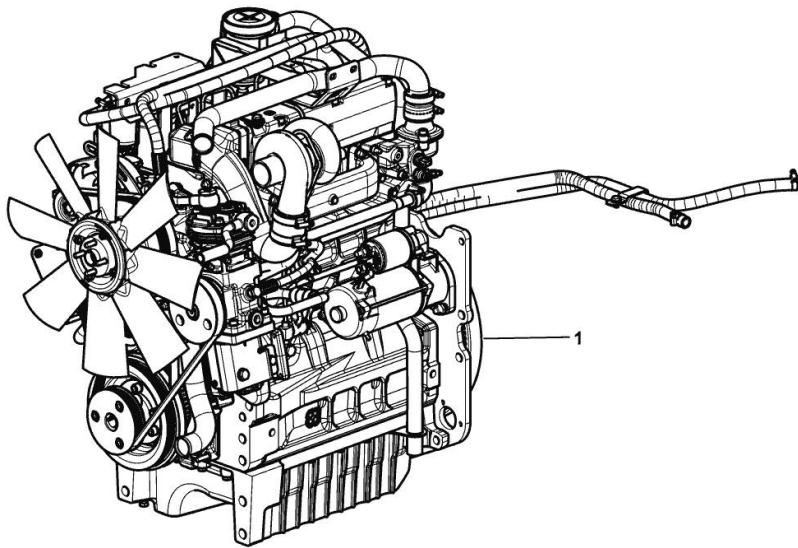
LIGHT ENGINE

| Fig. | P/n | QTY | Name |
|------|-----|-----|------|
|------|-----|-----|------|

Notes:

[XA 60 Tradition -> ZKDCS80200TH10001]

| | | | |
|---|---------------|---|---|
| 1 | I6.Q9001.00.0 | 1 | engine ON ORDERING PLEASE ENGINE NO. REQUIRED |
|---|---------------|---|---|



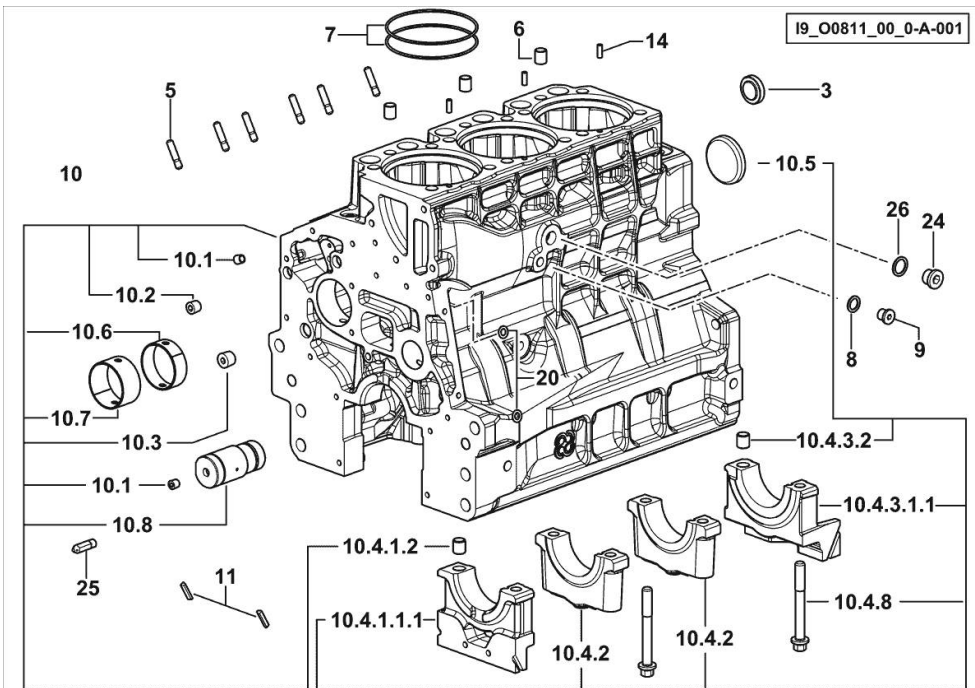
19_MTCS6_00_M-A-001

CRANKCASE

| Fig. | P/n | QTY | Name |
|------|-----|-----|------|
|------|-----|-----|------|

Notes:

[XA 60 Tradition -> ZKDCS80200TH10001]



| | | | |
|------------|-----------------|----|------------------------------|
| 3 | 2.3199.312.2/20 | 1 | plug m 35x1.5x9.5 |
| 5 | 2.0439.279.7 | 6 | stud bolt m 8 p.1 x 25 |
| 6 | 2.1559.188.2 | 3 | bush 11.4 x 14 x16 |
| 7 | 2.1539.259.0 | 6 | special oil seal 107.62x2.62 |
| 8 | 2.1560.010.0 | 1 | gasket 14.2 x 20 |
| 9 | 2.3199.292.0 | 1 | plug 1/4" gas |
| 10 | 0.014.9911.4/30 | 1 | crankcase |
| 10.1 | 2.3130.001.1 | 12 | plug 1/8" gas |
| 10.2 | 2.3130.002.1 | 4 | plug 1/4" gas |
| 10.3 | 2.3130.003.1 | 2 | plug 3/8" gas |
| 10.4.1.1 | 0.065.1112.7/10 | 1 | support |
| 10.4.1.2 | 2.1699.165.0 | 1 | bush 12.3x15x16 |
| 10.4.2 | 0.065.1114.0/10 | 2 | support |
| 10.4.3.1.1 | 0.065.1116.7/10 | 1 | support |
| 10.4.3.2 | 2.1699.165.0 | 1 | bush 12.3x15x16 |
| 10.4.8 | 0.065.1117.0 | 8 | screw m 12 x 100 |
| 10.5 | 2.3179.012.0 | 1 | plug 60 |
| 10.6 | 0.065.1140.0 | 3 | special bushing 59X55X20 |
| 10.7 | 0.065.1141.0 | 1 | special bushing 59X55X30 |
| 10.8 | 0.014.1340.0/10 | 1 | pin mm 85 |
| 11 | 0.066.1152.0/10 | 4 | gasket |
| 14 | 2.1549.154.2 | 3 | bush 4.8x5.8x16 |
| 20 | 2.1470.004.2 | 4 | lock washer 8 |
| 24 | 2.3120.101.0 | 1 | plug m 18 p.1.5 |
| 25 | 0.013.4946.0/10 | 1 | sprayer nozzle |
| 26 | 2.1560.014.0 | 1 | washer 18.2 x 24 |

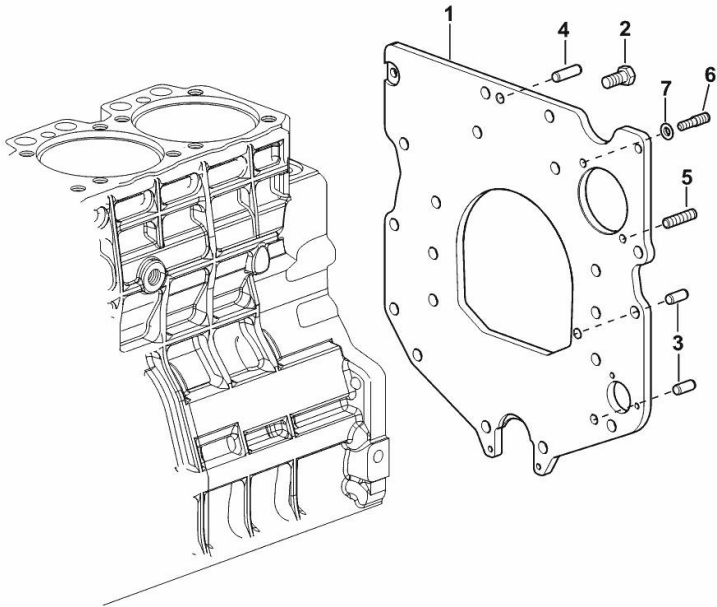
MONOBLOC ENGINE-GEARBOX CONNECTING FLANGE

| Fig. | P/n | QTY | Name |
|------|-----|-----|------|
|------|-----|-----|------|

Notes:

[XA 60 Tradition -> ZKDCS80200TH10001]

| | | | |
|---|-----------------|---|-----------------------------------|
| 1 | 0.007.7752.0/30 | 1 | flange |
| 2 | 2.0112.511.2 | 8 | screw m 14 p.2 x 30 |
| 3 | 2.1651.912.0 | 2 | cylindrical plug 12x28 |
| 4 | 2.1651.917.0 | 1 | cylindrical plug 12x40 |
| 5 | 2.0432.257.7 | 1 | stud bolt m 12 p.1.75 - 1.25 x 30 |
| 6 | 2.0439.250.7 | 1 | stud bolt m 12 / m 10 x 30 |
| 7 | 0.011.9294.0/10 | 1 | bush |



19_N8911_01_0-A-001

<https://www.ebooklibonline.com>

Hello dear friend!

Thank you very much for reading.

Enter the link into your browser.

The full manual is available for immediate download.

<https://www.ebooklibonline.com>

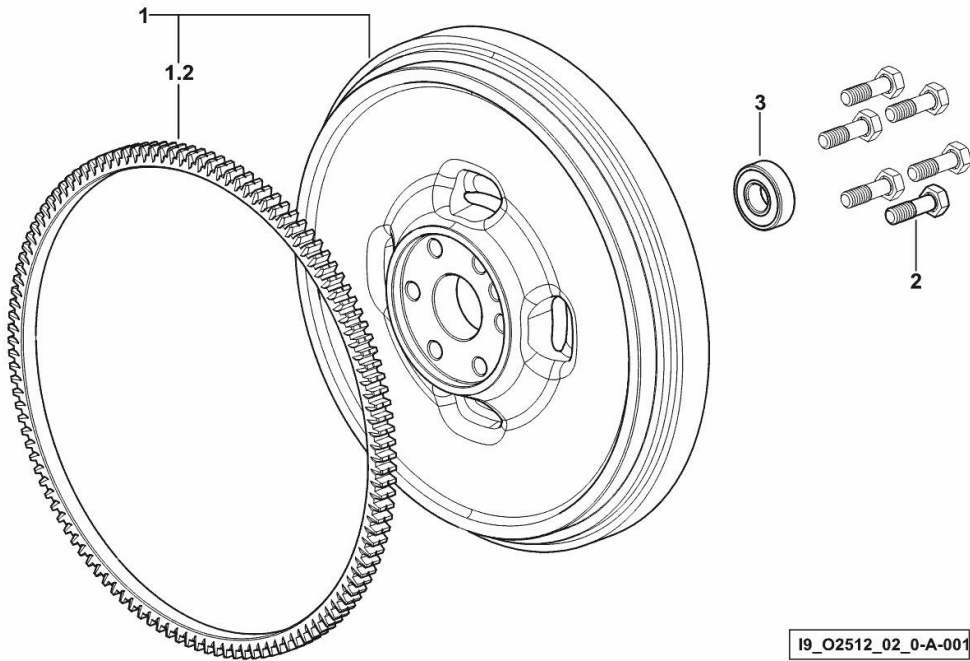
ENGINE FLYWHEEL

| Fig. | P/n | QTY | Name |
|------|-----|-----|------|
|------|-----|-----|------|

Notes:

[XA 60 Tradition -> ZKDCS80200TH10001]

| | | | |
|-----|-----------------|---|-----------------------|
| 1 | 0.007.1617.3/30 | 1 | flywheel |
| 1.2 | 0.069.1242.0 | 1 | crown wheel Z = 121 |
| 2 | 2.0119.174.0/10 | 6 | screw m 12 p.1.25x45 |
| 3 | 2.2041.008.9 | 1 | ball bearing 20x47x14 |



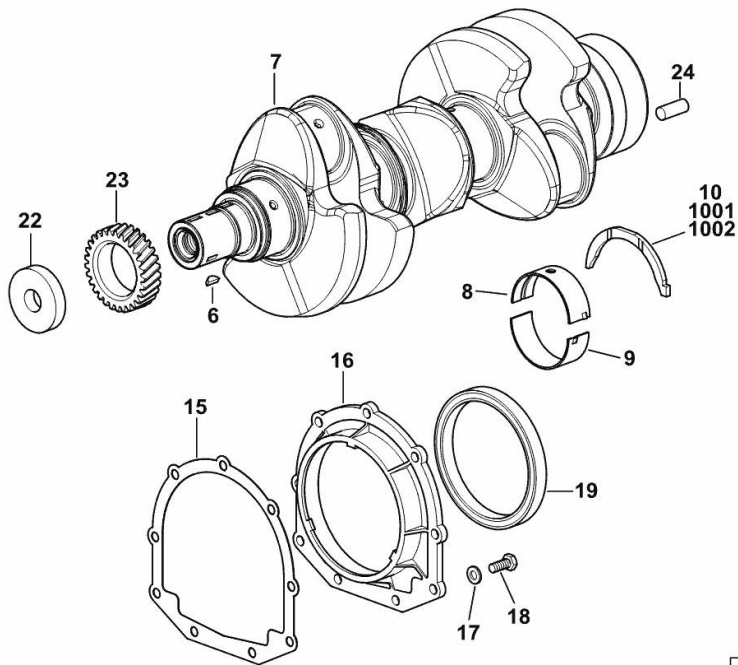
CRANKSHAFT

| Fig. | P/n | QTY | Name |
|------|-----|-----|------|
|------|-----|-----|------|

Notes:

[XA 60 Tradition -> ZKDCS80200TH10001]

| | | | |
|------|-----------------|---|-----------------------------|
| 6 | 2.1720.006.0 | 1 | key 4x6.5 |
| 7 | 0.019.2255.0/30 | 1 | crankshaft |
| 8 | 0.019.5455.0 | 4 | main half bushing STANDARD |
| 9 | 0.019.5456.0 | 4 | main half bushing STANDARD |
| 10 | 0.065.1218.0 | 4 | shim STANDARD |
| 15 | 0.065.1254.0/20 | 1 | gasket |
| 16 | 0.007.1711.0/10 | 1 | cover |
| 17 | 2.1475.002.2 | 9 | conical washer 8 |
| 18 | 2.0112.207.2 | 9 | screw m 8 p 1.25 x 20 |
| 19 | 2.1529.073.0 | 1 | special oil seal 110x130x13 |
| 22 | 2.1599.524.7 | 1 | washer 21x60x12 |
| 23 | 0.065.1323.0/30 | 1 | gear Z = 29 |
| 24 | 2.1651.915.0 | 1 | pin 12x35 |
| 1001 | 0.065.1218.7 | | shim + mm 0.10 |
| 1002 | 0.065.1218.8 | | shim + mm 0.15 |



19_O8312_00_0-A-002

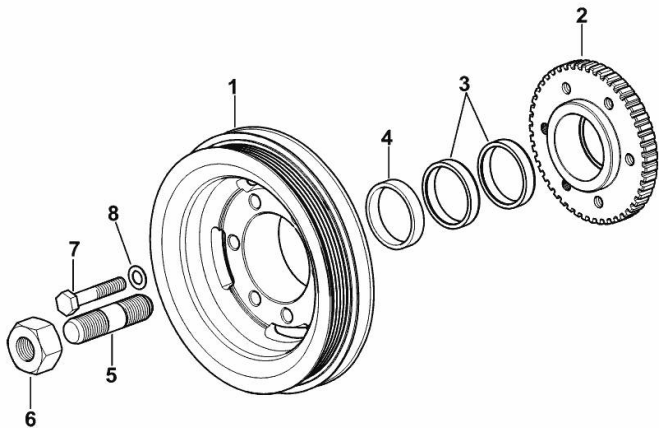
ENGINE CRANKSHAFT PULLEY WITH RING-FEEDER RINGS

| Fig. | P/n | QTY | Name |
|------|-----|-----|------|
|------|-----|-----|------|

Notes:

[XA 60 Tradition -> ZKDCS80200TH10001]

| | | | |
|---|-----------------|---|-------------------------|
| 1 | 0.015.6055.0 | 1 | pulley |
| 2 | 0.011.3515.0/20 | 1 | hub Z = 48 |
| 3 | 0.065.1256.0 | 2 | ring 45x52 |
| 4 | 2.1579.865.0 | 1 | spacer 45.2x51.8x10 |
| 5 | 2.0439.195.7 | 1 | stud bolt m 20 p.1.5x80 |
| 6 | 2.1019.094.7 | 1 | nut m 20 p.1.5 |
| 7 | 2.0112.320.2 | 6 | screw m 10 p.1.5 x 55 |
| 8 | 2.1470.006.2 | 6 | lock washer 10 |



I9_O6312_03_0-A-001

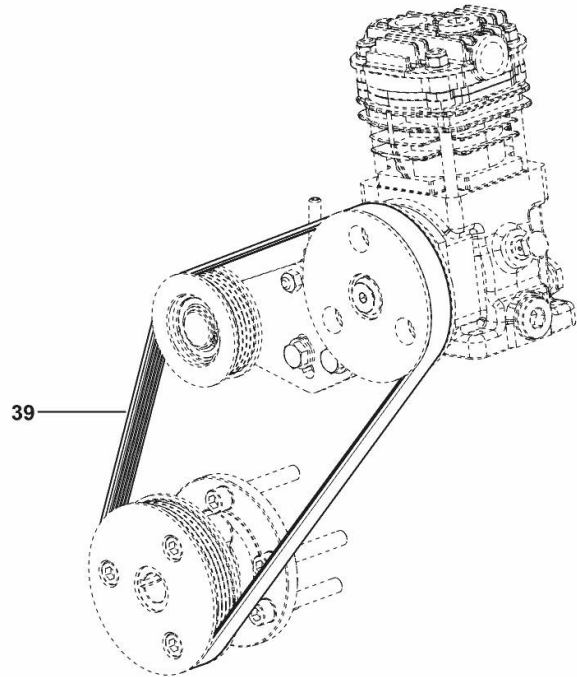
BELT

| Fig. | P/n | QTY | Name |
|------|-----|-----|------|
|------|-----|-----|------|

Notes:

- FOR TYPES WITH TRAILER AIR BRAKING [XA 60 Tradition -> ZKDCS80200TH10001]

| | | | |
|----|--------------|---|-------------------|
| 39 | 2.4119.200.0 | 1 | belt L = mm. 1020 |
|----|--------------|---|-------------------|



9_Q7319_40_0-A-001

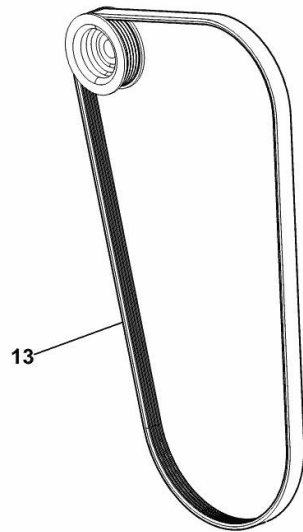
COOLANT PUMP AND ALTERNATOR DRIVEBELT

| Fig. | P/n | QTY | Name |
|------|-----|-----|------|
|------|-----|-----|------|

Notes:

- FOR TRACTORS WITHOUT AIR CONDITIONING [XA 60 Tradition -> ZKDCS80200TH10001]

| | | | |
|----|--------------|---|-------------------------|
| 13 | 2.4119.188.0 | 1 | belt PV-K5 17.4x1275 mm |
|----|--------------|---|-------------------------|



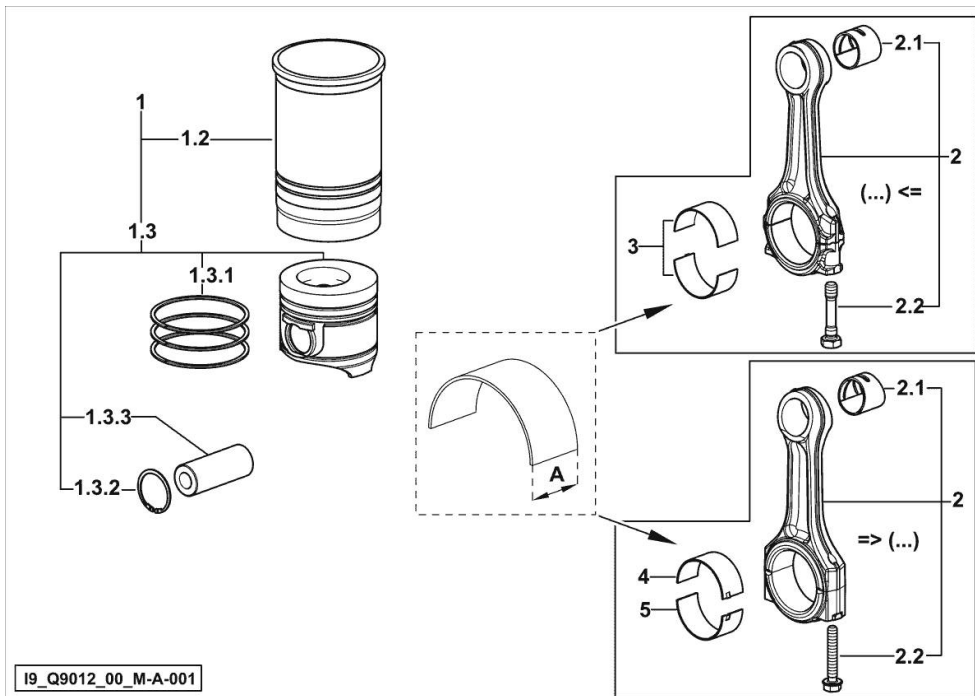
9_T0284_09_0-A-001

CYLINDER - PISTON - CONNECTING ROD

| Fig. | P/n | QTY | Name |
|------|-----|-----|------|
|------|-----|-----|------|

Notes:

[XA 60 Tradition -> ZKDCS80200TH10001]



| | | | |
|-------|-----------------|---|--|
| 1 | 0.Q92.0065.A | 3 | cyl. piston assembly "A" - CLASS A |
| 1 | 0.Q92.0065.B | 3 | cyl. piston assembly "B" - CLASS B |
| 1.2 | 0.A12.2675.0 | 1 | engine cylinder "A" - CLASS A |
| 1.2 | 0.B12.2675.0 | 1 | engine cylinder "B" - CLASS B |
| 1.3 | 0.Q92.0060.A | 1 | complete piston "A" - CLASS A |
| 1.3 | 0.Q92.0060.B | 1 | complete piston "B" - CLASS B |
| 1.3.1 | 0.Q92.0052.6 | 1 | piston ring set |
| 1.3.2 | 2.1411.014.1 | 2 | circlip 35 |
| 1.3.3 | 0.078.1236.0 | 1 | piston pin Ø 18 / Ø 35 / L = mm 86 |
| 2 | 0.014.5175.3 | 3 | engine connecting rod (...) <= |
| 2 | 0.019.2226.3/10 | 3 | engine connecting rod => (...) |
| 2.1 | 2.1559.255.0 | 1 | special bushing 34.60x39.130x34.65 (...) <= |
| 2.1 | 2.1559.532.0 | 1 | special bushing 34.60x39.130x36.65 => (...) |
| 2.2 | 2.0399.213.0 | 2 | screw m 12 p.1.25x61.5 (...) <= |
| 2.2 | 2.0399.365.0 | 2 | screw m 10 p.1.25x61.5 => (...) |
| 3 | 0.065.1225.0 | 6 | con.rod half bushing STANDARD - A = 28.75 -> 29.00 (...) <= |
| 3 | 0.065.1225.7 | 6 | con.rod half bushing - mm 0.25 (...) <= |
| 3 | 0.065.1225.8 | 6 | con.rod half bushing - mm 0.50 (...) <= |
| 4 | 0.019.5453.0 | 3 | con.rod half bushing STANDARD - A = 29.85 -> 30.10 => (...) |
| 5 | 0.019.5454.0 | 3 | con.rod half bushing STANDARD - A = 29.85 -> 30.10 => (...) |

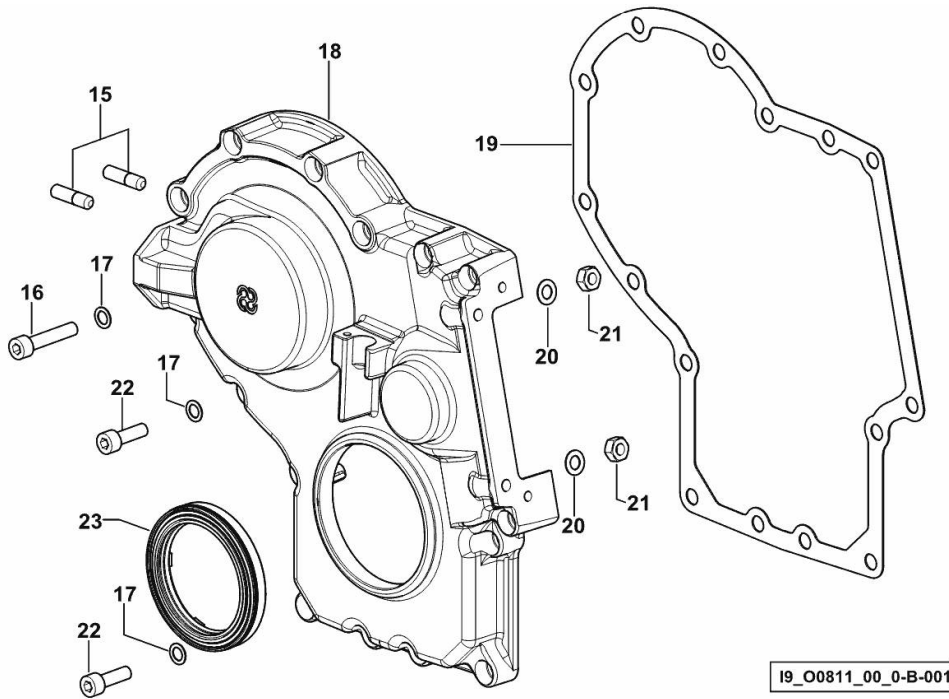
TIMING CASE

| Fig. | P/n | QTY | Name |
|------|-----|-----|------|
|------|-----|-----|------|

Notes:

[XA 60 Tradition -> ZKDCS80200TH10001]

| | | | |
|----|-----------------|----|---------------------------------|
| 15 | 2.0432.003.7 | 2 | stud bolt m 8 p.1.25 / p.1 x 20 |
| 16 | 2.0312.214.2 | 7 | screw m 8 p.1.25 x 40 |
| 17 | 2.1480.014.1 | 15 | washer 8 |
| 18 | 0.013.4981.0 | 1 | guard |
| 19 | 0.065.1150.0/30 | 1 | gasket |
| 20 | 2.1470.004.2 | 4 | lock washer 8 |
| 21 | 2.1011.405.2 | 2 | nut m 8 p.1 |
| 22 | 2.0312.208.2 | 8 | screw m 8 p.1.25 x 25 |
| 23 | 2.1529.167.0 | 1 | oil seal |



19_O0811_00_0-B-001

TIMING COVER FIXING

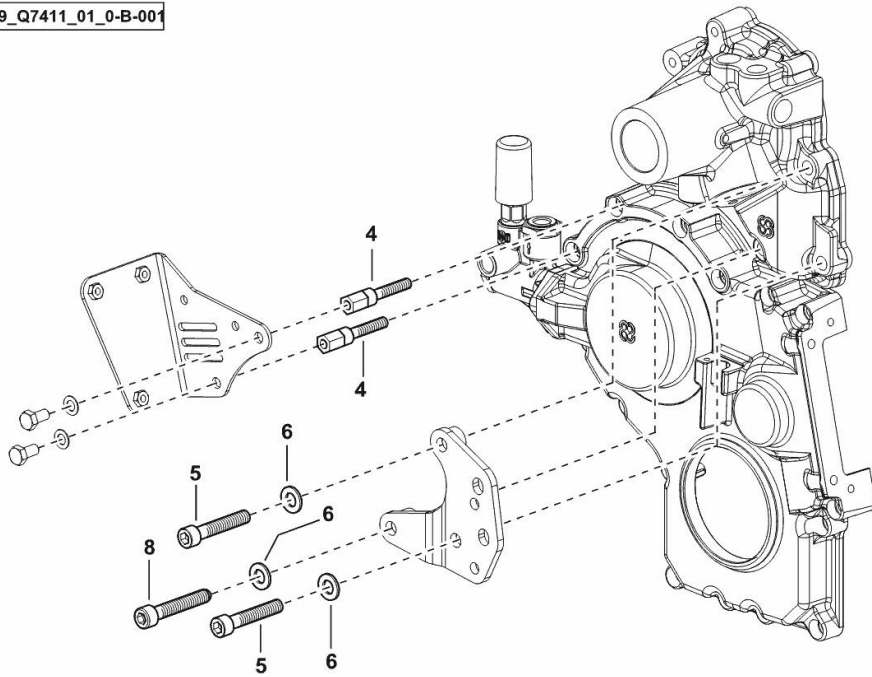
| Fig. | P/n | QTY | Name |
|------|-----|-----|------|
|------|-----|-----|------|

Notes:

[XA 60 Tradition -> ZKDCS80200TH10001]

| | | | |
|---|--------------|---|-----------------|
| 4 | 0.016.7791.0 | 2 | small column |
| 5 | 2.0312.317.2 | 2 | screw m 10 x 55 |
| 6 | 2.1475.003.7 | 3 | washer 10.5 |
| 8 | 2.0312.318.2 | 1 | screw m 10 x 60 |

19_Q7411_01_0-B-001

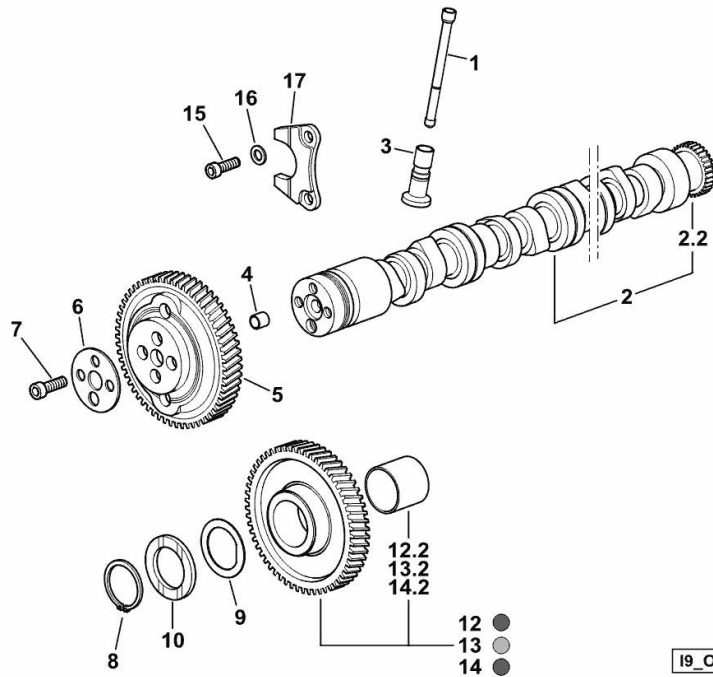


CAMSHAFT

| Fig. | P/n | QTY | Name |
|------|-----|-----|------|
|------|-----|-----|------|

Notes:

[XA 60 Tradition -> ZKDCS80200TH10001]



I9_O5213_00_0-A-001

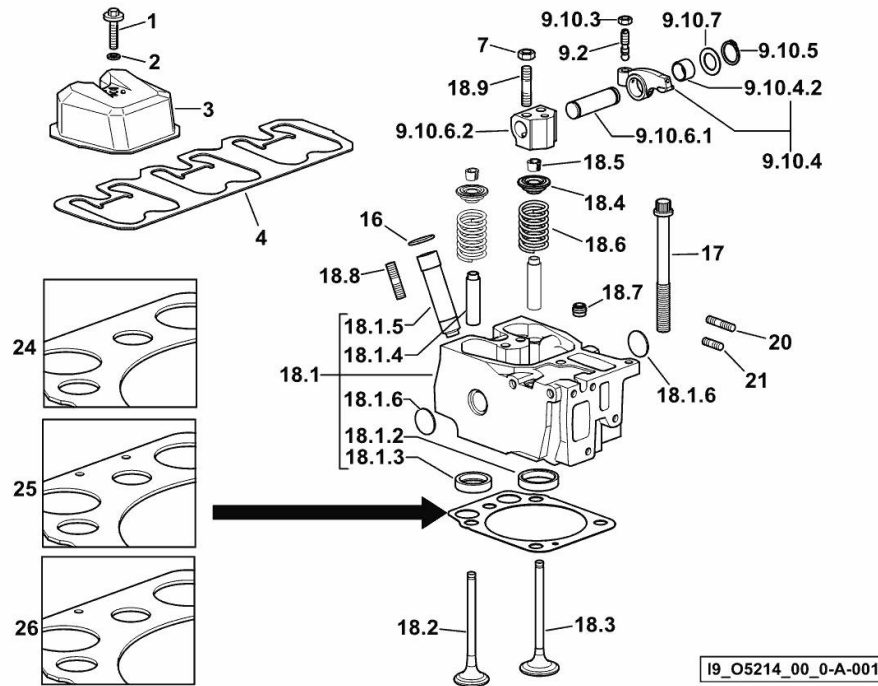
| | | | |
|------|-----------------|---|---|
| 1 | 0.065.1331.2 | 6 | rod |
| 2 | 0.016.3967.3 | 1 | camshaft |
| 2.2 | 0.065.1324.0/10 | 1 | gear Z = 32 |
| 3 | 0.065.1330.0 | 6 | tappets |
| 4 | 2.1559.398.0 | 1 | bushing 10.5x13x12 |
| 5 | 0.013.5017.0 | 1 | gear z=58 |
| 6 | 0.065.1350.0 | 1 | small disc |
| 7 | 2.0132.207.2 | 4 | screw m 10 p.1 x 25 |
| 8 | 2.1410.016.1 | 1 | circlip 40 |
| 9 | 0.065.1352.0 | 1 | shim |
| 10 | 0.018.2233.0 | 2 | shoulder ring |
| 12 | 0.007.1177.3/20 | 1 | gear z = 57 - WITH RED IDENTIFICATION STAMP |
| 12.2 | 2.1559.185.0/10 | 1 | bushing |
| 13 | 0.007.1178.3/20 | 1 | gear z = 57 - WITH YELLOW IDENTIFICATION STAMP |
| 13.2 | 2.1559.185.0/10 | 1 | bushing |
| 14 | 0.007.1179.3/20 | 1 | gear z = 57 - WITH GREEN IDENTIFICATION STAMP |
| 14.2 | 2.1559.185.0/10 | 1 | bushing |
| 15 | 2.0312.205.2 | 2 | screw |
| 16 | 2.1480.014.1 | 2 | washer 8 |
| 17 | 0.065.1353.0 | 1 | small plate |

CYLINDER HEAD

| Fig. | P/n | QTY | Name |
|------|-----|-----|------|
|------|-----|-----|------|

Notes:

[XA 60 Tradition -> ZKDCS80200TH10001]



| | | | |
|----------|-----------------|----|------------------------------------|
| 1 | 2.0399.288.2/10 | 3 | screw m 8x36x46 |
| 2 | 2.1532.018.0 | 3 | oil seal 9.19 x 2.62 |
| 3 | 0.007.1139.0/10 | 3 | small cap |
| 4 | 0.069.1450.0/30 | 1 | tappet gasket |
| 7 | 2.1011.421.2 | 6 | nut m 10 p.1.25 |
| 9.2 | 0.021.1434.0 | 2 | screw |
| 9.10.3 | 2.1011.405.2 | 2 | nut m 8 p.1 |
| 9.10.4 | 0.066.1432.3 | 2 | rocker arm |
| 9.10.4.2 | 2.1559.021.0/40 | 1 | bushing 15x19x22 |
| 9.10.5 | 2.1410.055.7 | 2 | circlip 19 |
| 9.10.6.1 | 0.066.1431.0 | 1 | pin |
| 9.10.6.2 | 0.066.1430.0/10 | 1 | support |
| 9.10.7 | 2.1599.432.0 | 2 | shoulder ring |
| 16 | 2.1532.507.0 | 3 | oil seal 17x3.53 |
| 17 | 0.012.2673.0 | 12 | screw m 14 p.2x141 |
| 18.1 | 0.017.0868.3 | 1 | engine head |
| 18.1.2 | 0.078.1426.0 | 1 | valve seat |
| 18.1.3 | 0.066.1427.0 | 1 | valve seat |
| 18.1.4 | 0.007.1779.0/20 | 2 | valve guide |
| 18.1.5 | 0.012.9984.0/20 | 1 | bush |
| 18.1.6 | 2.3170.012.2 | 2 | expansion plug Ø 30 |
| 18.2 | 0.010.6022.0 | 1 | exhaust valve mm 39.1 / Ø mm 9 |
| 18.3 | 0.010.6017.0 | 1 | inlet valve mm 43.63 / Ø mm 9 |
| 18.4 | 0.066.1425.0 | 2 | cup |
| 18.5 | 0.074.1423.0 | 4 | conical valve cotter |
| 18.6 | 2.4019.287.0 | 2 | spring |
| 18.7 | 2.1519.117.0 | 2 | special oil seal |
| 18.8 | 2.0432.161.7 | 1 | stud bolt m 10 p.1.5 / p.1.25 x 40 |
| 18.9 | 2.0432.163.7 | 2 | stud bolt m 10 p.1.5 / p.1.25 x 45 |
| 20 | 2.0432.011.7 | 3 | stud bolt m 8 p.1.25 / p.1 x 40 |
| 21 | 2.0432.005.7 | 3 | stud bolt m 8 p.1.5 / p.1 x 25 |
| 24 | 0.015.9190.0 | 1 | head gasket mm 1.2 |
| 25 | 0.015.9191.0 | 1 | head gasket mm 1.4 |
| 26 | 0.015.9192.0 | 1 | head gasket mm 1.6 |



Suggest:

For more complete manuals. Please go to the home page.

<https://www.ebooklibonline.com>

If the above button click is invalid. Please download this document first, and then click the above link to download the complete manual.

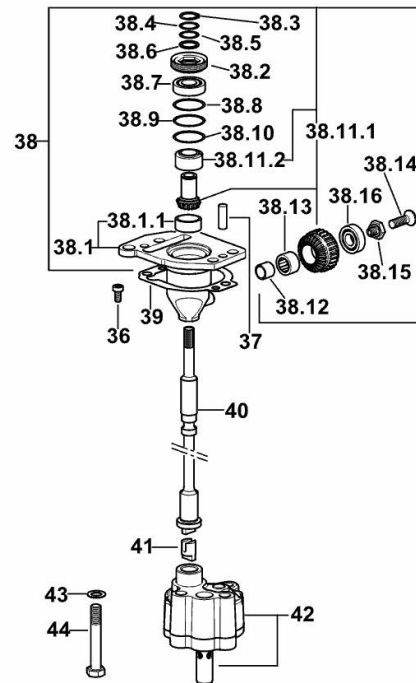
Thank you so much for reading

ENGINE OIL PUMP

| Fig. | P/n | QTY | Name |
|------|-----|-----|------|
|------|-----|-----|------|

Notes:

[XA 60 Tradition -> ZKDCS80200TH10001]



19_O6815_00_0-C-002

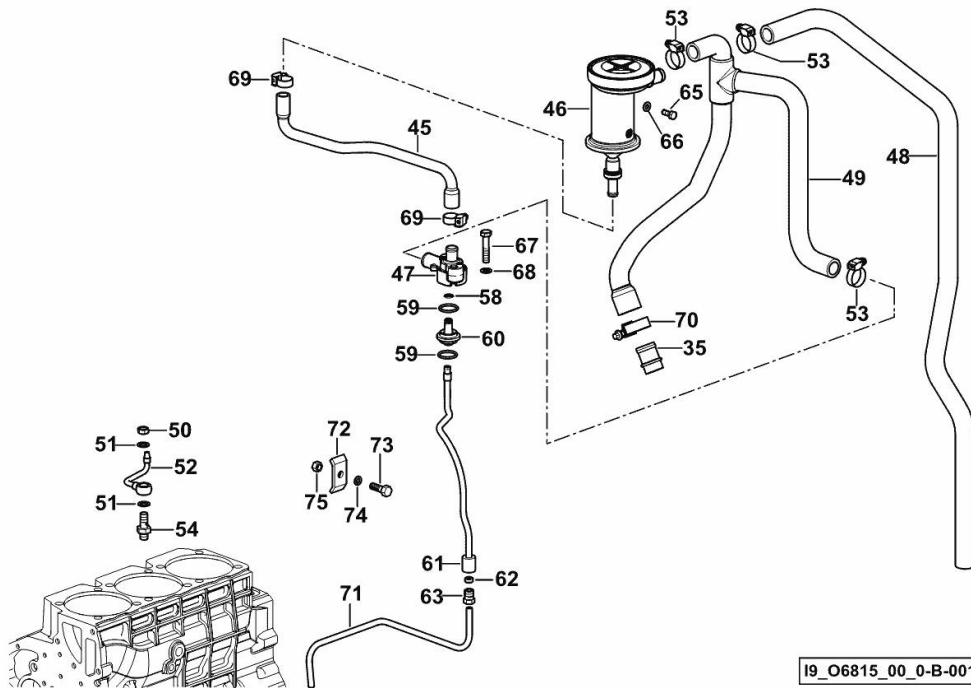
| | | | |
|---------|-----------------|---|----------------------------------|
| 36 | 2.0169.005.2 | 2 | screw m 6 p.1 x 12 |
| 37 | 2.1651.710.0 | 2 | pin 8x22 |
| 38 | 0.013.1629.4/20 | 1 | support |
| 38.1 | 0.013.1629.3/20 | 1 | support |
| 38.1.1 | 2.1559.186.0 | 1 | special bushing 26 x 31.5 x 35 |
| 38.2 | 2.1219.025.2/10 | 1 | ring nut m 36 p.1.5 |
| 38.3 | 2.1410.057.1 | 1 | circlip 15 |
| 38.4 | 2.1589.153.0 | 1 | shoulder ring 15.2 x 19 x 1.00 |
| 38.5 | 2.1589.146.0 | 2 | shoulder ring 15.2 x 19 x 0.15 |
| 38.6 | 2.1589.147.0 | 2 | shoulder ring 15.2 x 19 x 0.10 |
| 38.7 | 2.2020.001.0 | 1 | ball bearing 15 x 32 x 8.00 |
| 38.8 | 2.1589.148.0 | 1 | shoulder ring 28.2 x 31.8 x 0.5 |
| 38.9 | 2.1589.150.0 | 2 | shoulder ring 28.2 x 31.8 x 0.1 |
| 38.10 | 2.1589.151.0 | 2 | shoulder ring 28.2 x 31.8 x 0.15 |
| 38.11.1 | 0.065.1558.6/10 | 1 | bevel drive |
| 38.11.2 | 0.065.1559.0 | 1 | bush |
| 38.12 | 2.2680.020.0 | 1 | ring 12 x 15 x 12 |
| 38.13 | 2.2725.016.0 | 1 | roller cage 15 x 21 x 12 |
| 38.14 | 2.0342.007.6 | 1 | screw m 4 p.0.7 x 30 |
| 38.15 | 2.0399.128.2/10 | 1 | screw m 8 p.1 x 8 |
| 38.16 | 2.2030.002.0 | 1 | ball bearing 12 x 28 x 8 |
| 39 | 0.065.1560.0/30 | 2 | gasket |
| 40 | 0.065.1569.0/40 | 1 | shaft |
| 41 | 0.065.1562.0/10 | 1 | joint |
| 42 | 0.014.7994.4 | 1 | oil pump |
| 43 | 2.1470.006.2 | 2 | lock washer 10 |
| 44 | 2.0112.323.2 | 2 | screw m 10 p.1.5x70 |

LUBRICATION

| Fig. | P/n | QTY | Name |
|------|-----|-----|------|
|------|-----|-----|------|

Notes:

[XA 60 Tradition -> ZKDCS80200TH10001]



| | | | |
|----|-----------------|----|-------------------------------|
| 35 | 0.011.5918.0/10 | 1 | tube |
| 45 | 0.013.5534.0 | 1 | tube |
| 46 | 0.013.5023.0 | 1 | sediment bowl |
| 47 | 0.013.5291.0 | 1 | flange |
| 48 | 0.013.5653.0 | 1 | tube |
| 49 | 0.013.5649.0/10 | 1 | tube |
| 50 | 2.1099.108.2 | 3 | special nut m 10 p.1 |
| 51 | 2.1560.006.0 | 12 | gasket 10.2 x 16 |
| 52 | 0.086.1550.2 | 3 | sprayer nozzle |
| 53 | 2.6851.002.0 | 3 | clamp Ø 20/32 |
| 54 | 0.065.1160.3/20 | 3 | valve |
| 58 | 2.1532.012.0 | 1 | oil seal 6.75 x 1.78 |
| 59 | 2.1539.072.0 | 2 | special oil seal 23.52 x 1.78 |
| 60 | 0.066.1558.0 | 1 | bush |
| 61 | 0.066.1557.2 | 1 | tube |
| 62 | 2.3350.003.1 | 1 | nosepiece 8 |
| 63 | 2.3339.418.1 | 1 | pipe fitting m 12 p.1 |
| 65 | 2.0112.005.2 | 2 | screw m 6 p.1 x 16 |
| 66 | 2.1310.003.2 | 2 | flat washer 7.4x14 |
| 67 | 2.0112.215.2 | 2 | screw m 8 p.1.25 x 40 |
| 68 | 2.1474.009.2 | 2 | spring washer 8 |
| 69 | 2.6851.001.0 | 2 | clamp Ø 16/25 |
| 70 | 2.6851.003.0 | 1 | clamp Ø 25/40 |
| 71 | 0.007.1427.0 | 1 | tube |
| 72 | 0.002.8816.0 | 1 | small plate |
| 73 | 2.0112.007.2 | 1 | screw m 6 p.1 x 20 |
| 74 | 2.1470.002.2 | 1 | lock washer 6 |
| 75 | 2.1011.103.2 | 1 | nut m 6 p.1 |

<https://www.ebooklibonline.com>

Hello dear friend!

Thank you very much for reading.

Enter the link into your browser.

The full manual is available for immediate download.

<https://www.ebooklibonline.com>