

Section: ENGINE
CRANKCASE

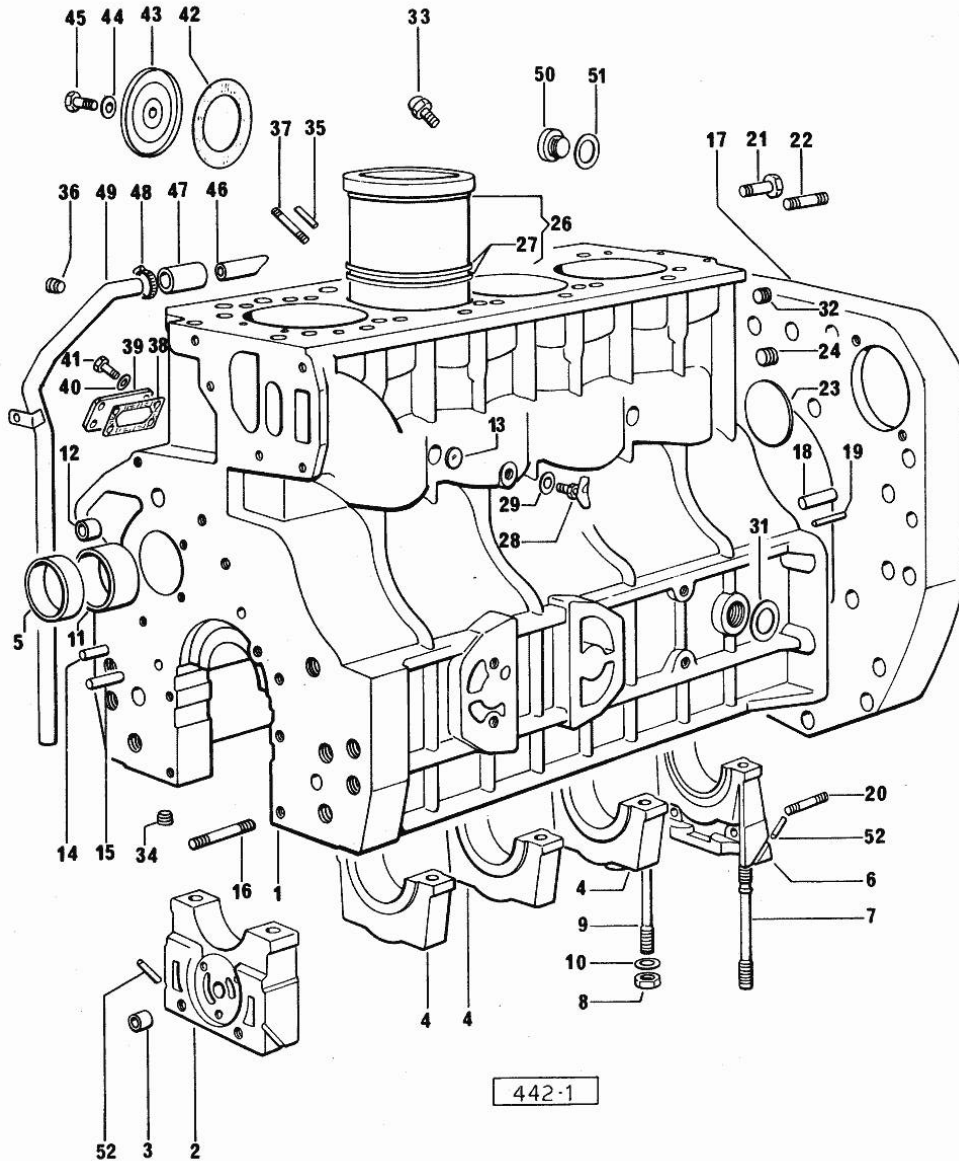


Fig.	P/n	QTY	Name
Notes: [H-496 T]			
1	0.059.1110.4/70	1	old part number
2	0.052.1112.3	1	support
3	2.1559.090.0/10	1	bushing 14.24x19.06x27
4	0.052.1114.0	3	support
5	2.1559.157.0	1	special bushing
6	0.052.1116.0	1	support
7	0.052.1151.0	4	stud bolt
8	2.1099.064.7	10	special nut
9	0.052.1150.0	6	stud bolt
10	2.1599.318.7	10	flat washer
11	2.1559.156.0	3	special bushing
12	2.1559.111.0/10	2	special bushing 11.5x14.1x10
13	2.3170.012.1	2	expansion plug 30
14	2.1653.711.0	1	pin
15	2.1699.114.0	1	pin 8x55
16	2.0432.025.1	2	stud bolt m 8 p 1.25-1x100
17	0.071.1150.0	1	flange
18	2.1652.911.0	2	cylindrical plug 12x25
19	2.1653.708.0	2	pin 8x18
20	2.0432.153.1	2	stud bolt m 10 p.1.5 / p.1.25 x 20
21	2.0112.513.1	14	screw m 14 p.2 x 35
22	2.0432.257.1	2	stud bolt m 12 p.1.75 - 1.25 x 30
23	2.3170.023.1	1	expansion plug 65
24	2.3130.003.1	2	plug 3/8" gas
26	0.057.1120.0	4	engine cylinder
27	2.1539.029.0	8	special oil seal
28	0.049.1152.0	1	cock
29	2.1560.009.0	1	gasket 14.2x18
31	2.1560.022.0	1	gasket
32	2.3130.002.1	2	plug 1/4" gas
33	0.071.1151.3	4	valve
34	2.3130.001.1	5	plug 1/8" gas
35	2.1653.507.0	2	pin
36	2.3139.001.1	5	plug
37	2.0432.003.1	4	stud bolt m 8 p.1.25 / p.1 x 20
38	0.057.1153.0	1	gasket
39	0.057.1162.3/20	1	cover
40	2.1310.004.2	4	flat washer 8.4x17
41	2.0112.205.2	2	screw m 8 p.1.25 x 16
41	2.0112.209.2	2	screw m 8 p 1.25 x 25
42	0.057.1151.0	1	gasket

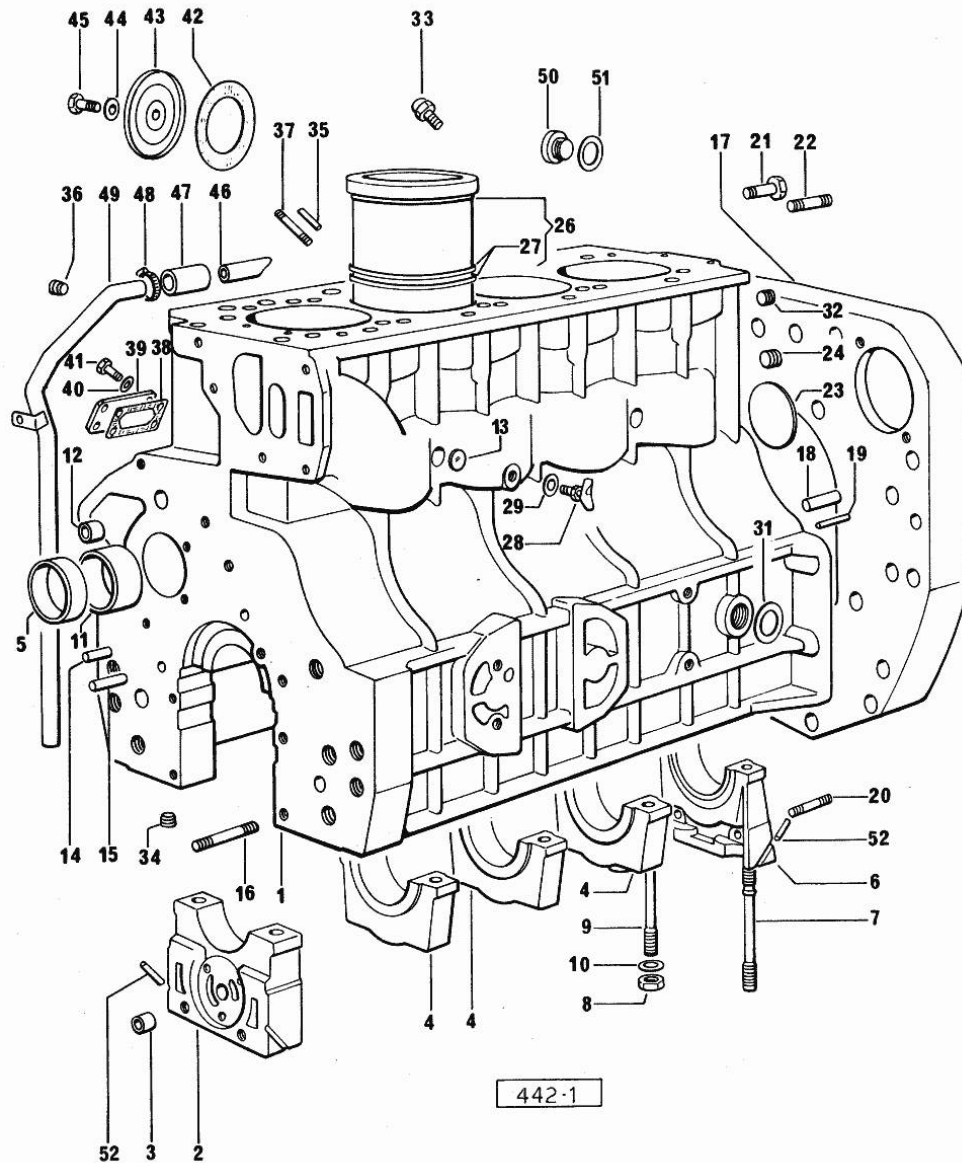
Section: ENGINE
CRANKCASE

Fig.	P/n	QTY	Name
43	0.057.1150.0	1	cover
44	2.1560.003.0	1	copper gasket 8.2 x 12
45	2.0112.204.2	1	screw m 8 p.1.25x14
46	0.057.1154.0	1	tube
47	0.057.1158.0	1	sleeve
48	2.6850.007.0	1	clamp 25-40
49	0.079.1150.2/10	1	old part number
50	2.3120.002.4	2	plug m 22 x 1.5
51	2.1560.017.0	2	gasket 22.2 x 27
52	0.029.1154.0	4	gasket

Section: ENGINE
TIMING CASE

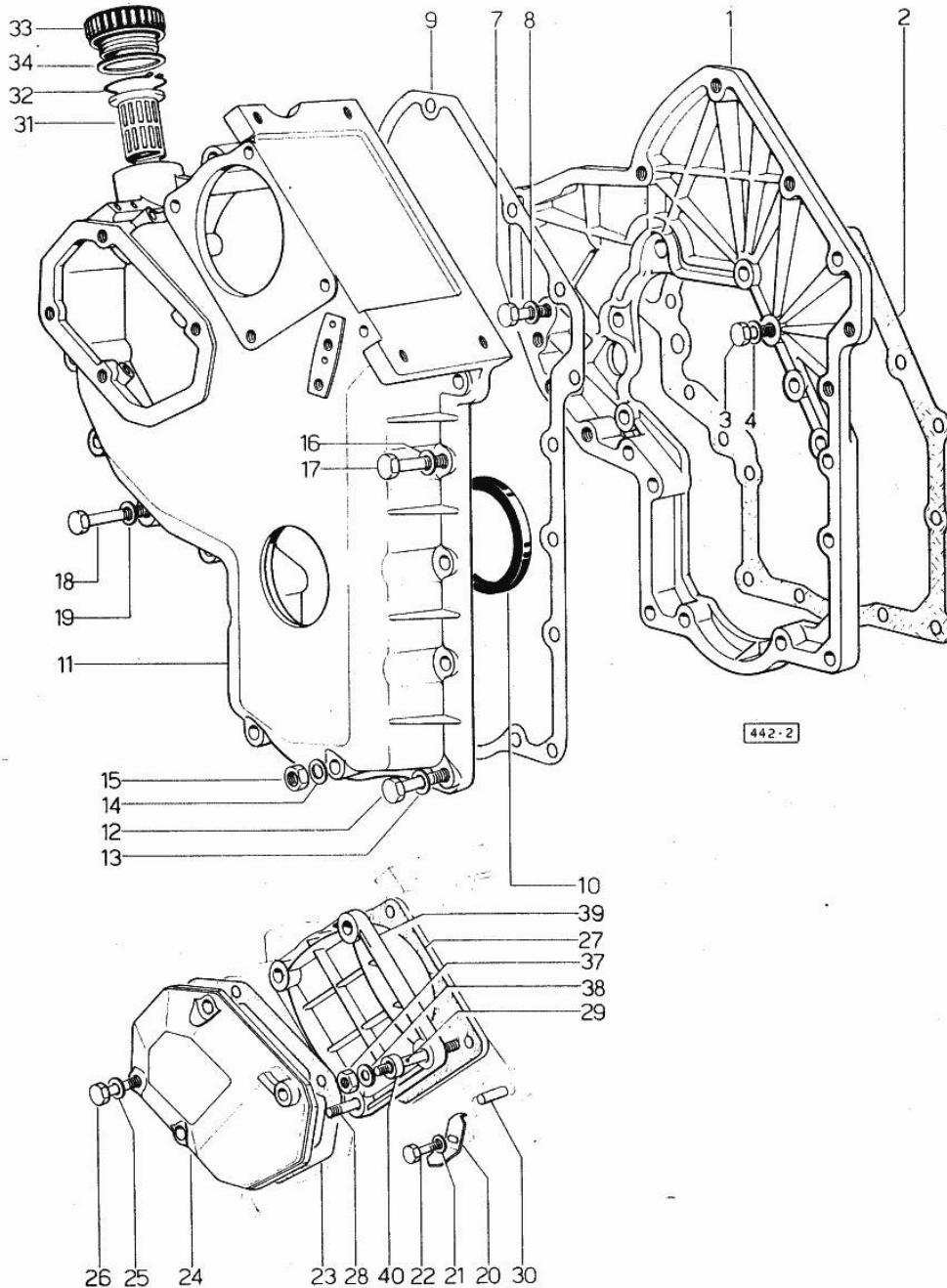


Fig.	P/n	QTY	Name
------	-----	-----	------

Notes:
[H-496 T]

1	0.079.1131.0	1	flange
2	0.057.1155.0	1	gasket
3	2.0112.209.2	2	screw m 8 p 1.25 x 25
4	2.1480.014.1	2	washer 8
7	2.0112.207.2	3	screw m 8 p 1.25 x 20
8	2.1480.014.1	3	washer 8
9	0.041.1152.0	1	gasket
10	2.1519.010.0	1	special oil seal 58x80x10
11	0.048.1132.0/30	1	guard
12	2.0112.217.2	5	screw m 8 p.1.25 x 45
13	2.1480.014.1	5	washer 8
14	2.1560.003.0	2	copper gasket 8.2 x 12
15	2.1011.405.2	2	nut m 8 p.1
16	2.1480.014.1	3	washer 8
17	2.0112.211.2	3	screw m 8 p.1.25 x 30
18	2.0112.222.2	4	screw m 8 p.1.25x65
19	2.1480.014.1	4	washer 8
20	0.041.1158.0	1	index
21	2.1310.004.2	1	flat washer 8.4x17
22	2.0112.204.2	1	screw m 8 p.1.25x14
23	0.048.1151.0/10	1	gasket
24	0.048.1150.0/20	1	cover
25	2.1560.005.0	4	copper gasket 10.2 x 14
26	2.0112.315.2	4	screw m 10 p.1.5 x 40
27	0.041.1154.0	1	gasket
28	2.0432.013.1	1	stud bolt m 8 p.1.25 / p.1 x 45
29	2.0432.028.1	3	stud bolt m 8 p.1.25-1x130
30	2.1653.717.0	1	pin 8 x 40
31	0.041.1159.0/10	1	filter
32	2.1411.012.1	1	circlip 30
33	0.041.1135.3	1	plug
34	2.1569.072.0	1	gasket 32 x 39.5 x 2
37	2.1011.405.2	4	nut m 8 p.1
38	2.1310.004.2	4	flat washer 8.4x17
39	0.037.1151.0/10	1	cover

<https://www.ebooklibonline.com>

Hello dear friend!

Thank you very much for reading.

Enter the link into your browser.

The full manual is available for immediate download.

<https://www.ebooklibonline.com>

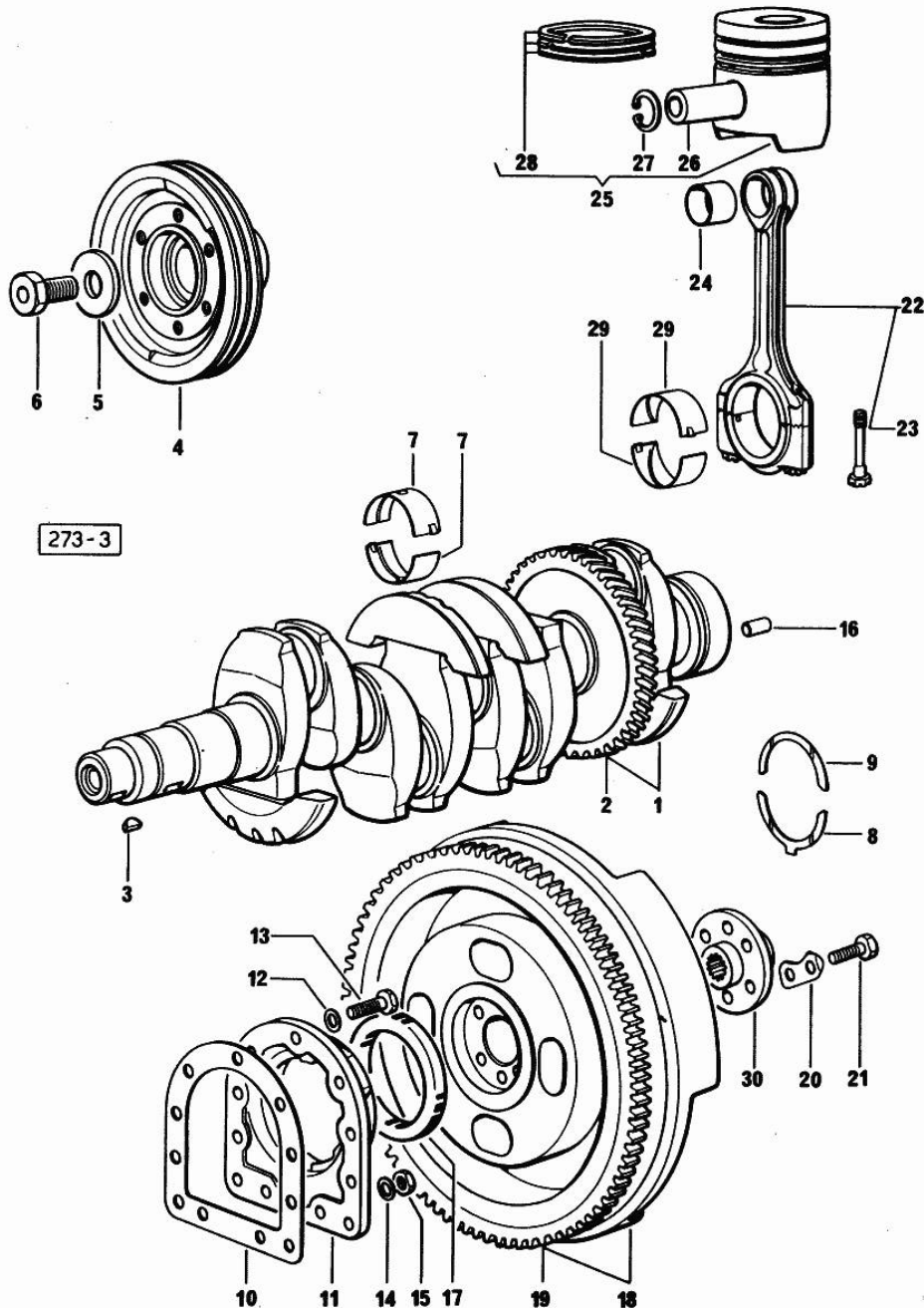
Section: ENGINE

CRANKSHAFT

Fig.	P/n	QTY	Name
------	-----	-----	------

Notes:
[H-496 T]

1	0.044.1267.4/20	1	crankshaft
1	2.1630.611.0	1	roll pin 6 x 24
2	0.044.1265.0/20	1	gear
3	2.1799.002.0	1	stick 10x13
4	0.059.1244.0	1	pulley
5	0.001.6020.0	1	shoulder
6	2.0129.032.2	1	screw m 24 p.2x45
7	0.029.0066.0		main half bushing - mm 1.00
7	0.029.1215.0/10	10	main half bushing
7	0.029.1215.7		main half bushing - mm 0.25
7	0.029.1215.8		main half bushing - mm 0.50
7	0.029.1215.9		main half bushing - mm 0.75
8	0.001.4547.0		shoulder ring + mm 0.05
8	0.001.4548.0		shoulder ring + mm 0.10
8	0.001.4549.0		shoulder ring + mm 0.15
8	0.042.1219.0	2	shoulder ring STANDARD
9	0.001.4544.0	2	shoulder ring + mm 0.05
10	0.029.1250.0	1	gasket
11	029.1240.0/10	1	-
12	2.1474.010.1	7	spring washer 10
13	2.0112.309.2	7	screw m 10 p.1.5 x 25
14	2.1560.006.0	2	gasket 10.2 x 16
15	2.1011.321.2	1	nut m 10 p.1.25
16	2.1652.915.0	1	cylindrical plug 12x35
17	2.1519.009.0/10	1	special oil seal
18	0.046.1256.3	1	flywheel
19	0.047.1242.0	1	crown wheel z=128
20	2.1379.006.0	3	lock-tab 15x15x36,5
21	2.0122.517.7	6	screw m 14 p.1.5x45
22	0.057.1220.3/10	4	engine connecting rod
23	0.039.1250.0	8	screw m 14 p.1.5x63
24	2.1559.114.0/10	4	special bushing
25	0.058.0060.6	4	complete piston STANDARD
26	0.054.1236.0	4	piston pin
27	2.1411.014.1	8	circlip 35
28	0.057.0051.6	4	piston ring set
29	0.052.1225.0	8	con.rod half bushing
29	0.052.1225.7		con.rod half bushing - mm 0.25
29	0.052.1225.8		con.rod half bushing - mm 0.50
29	0.052.1225.9	1	con.rod half bushing - mm 0.75
30	0.170.3650.0	1	flange



CRANKSHAFT - COUNTER-ROTATING WEIGHTS

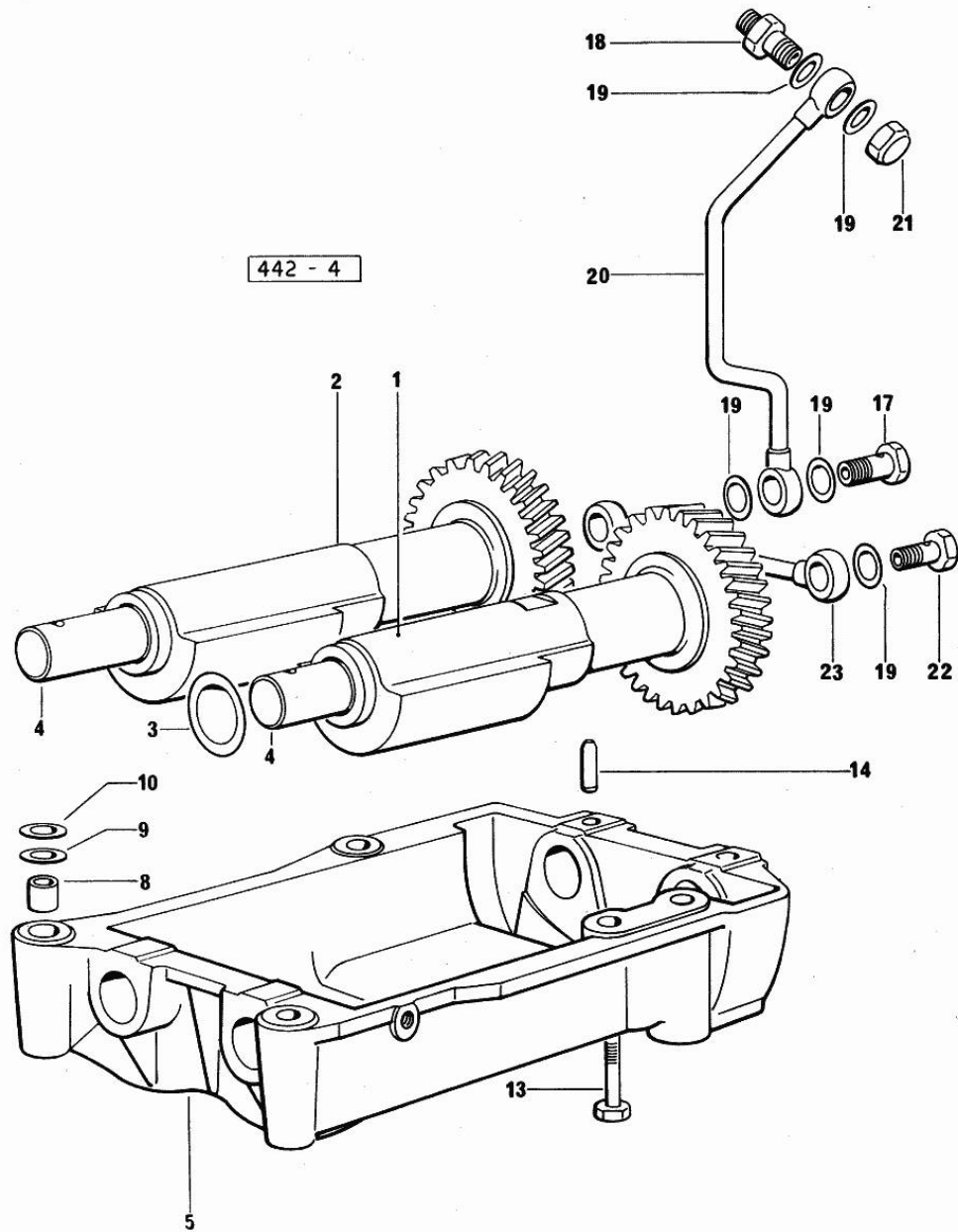


Fig.	P/n	QTY	Name
------	-----	-----	------

Notes:
[H-496 T]

1	0.044.1263.3/20	1	mass sx/lh/li
1	2.1559.115.0	2	special bushing 26x30x30
2	0.044.1261.3/10	1	mass dx/rh/re
2	2.1559.115.0	2	special bushing 26x30x30
3	2.1589.050.0/10	4	shoulder ring 26.1x38x1
4	0.044.1266.0/20	2	shaft
5	0.059.1250.0/10	1	support
8	2.1579.626.0	2	spacer 13.2x16x11
9	2.1579.628.0	4	spacer 16.5x26x0.1
10	2.1589.048.0	4	shoulder ring 16.5x26x0.3
13	2.0112.426.1	4	screw m 12 p.1.75x85
14	2.1631.717.0	2	roll pin 8 x 40
17	2.3339.515.1	1	pipe union m 12 p.1.25
18	2.3319.041.1	1	pipe union m 12 p.1.25-p.1.75
19	2.1560.007.0	7	gasket 12.2x16
20	0.059.1550.2	1	tube
21	2.1019.048.1	1	special nut m 12 p.1.5
22	2.3332.003.1	1	pipe union m 12 p.1.25
23	0.319.1550.3	1	tube

Section: ENGINE
CYLINDER HEAD

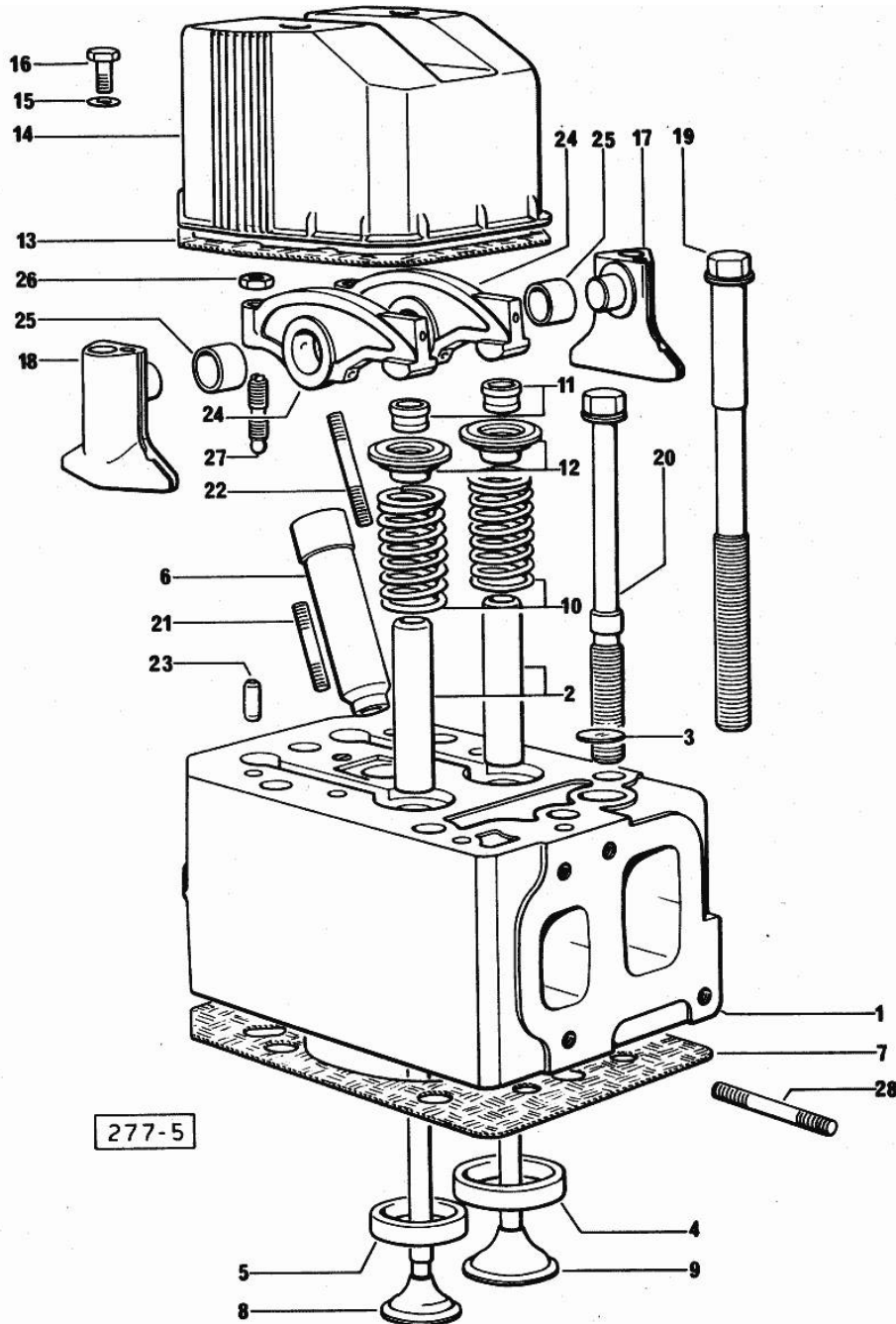


Fig.	P/n	QTY	Name
------	-----	-----	------

Notes:
[H-496 T]

1	0.057.1410.3/60	4	old part number
2	0.057.1416.0	8	valve guide
3	2.3170.010.1	4	expansion plug 25
4	0.057.1450.0/10	4	valve seat
5	0.057.1451.0	4	valve seat
6	0.057.1452.0/10	4	bush
7	0.057.1456.0/20	4	gasket
8	0.058.1421.0/10	4	exhaust valve
9	0.058.1420.0/10	4	inlet valve
10	2.4019.228.0	8	spring
11	0.058.1423.0	8	cone
12	0.058.1425.0/10	8	cup
13	0.057.1457.0/10	4	gasket
14	0.057.1440.0/10	4	small cap
15	2.1560.004.0	8	copper gasket 8.2 x 14
16	2.0119.108.2	8	old part number
17	0.057.1430.0	4	support
18	0.057.1453.0	4	support
19	0.057.1454.0/10	8	screw
20	0.057.1455.0/10	16	screw
21	2.0432.007.1	4	stud bolt m 8 p.1.25 / p.1 x 30
22	2.0432.011.1	4	stud bolt m 8 p.1.25 / p.1 x 40
23	2.1652.708.0	16	cylindrical plug 8x18
24	0.057.1432.3/10	8	rocker arm
25	2.1559.141.0	8	special bushing
26	2.1011.405.2	8	nut m 8 p.1
27	0.021.1434.0	8	screw
28	2.0432.009.1	7	stud bolt m 8 p.1.25 / p.1 x 35
28	2.0432.026.1	1	stud bolt m 8 p.1.25 - 1.00 x 110

Section: ENGINE
LUBRICATION

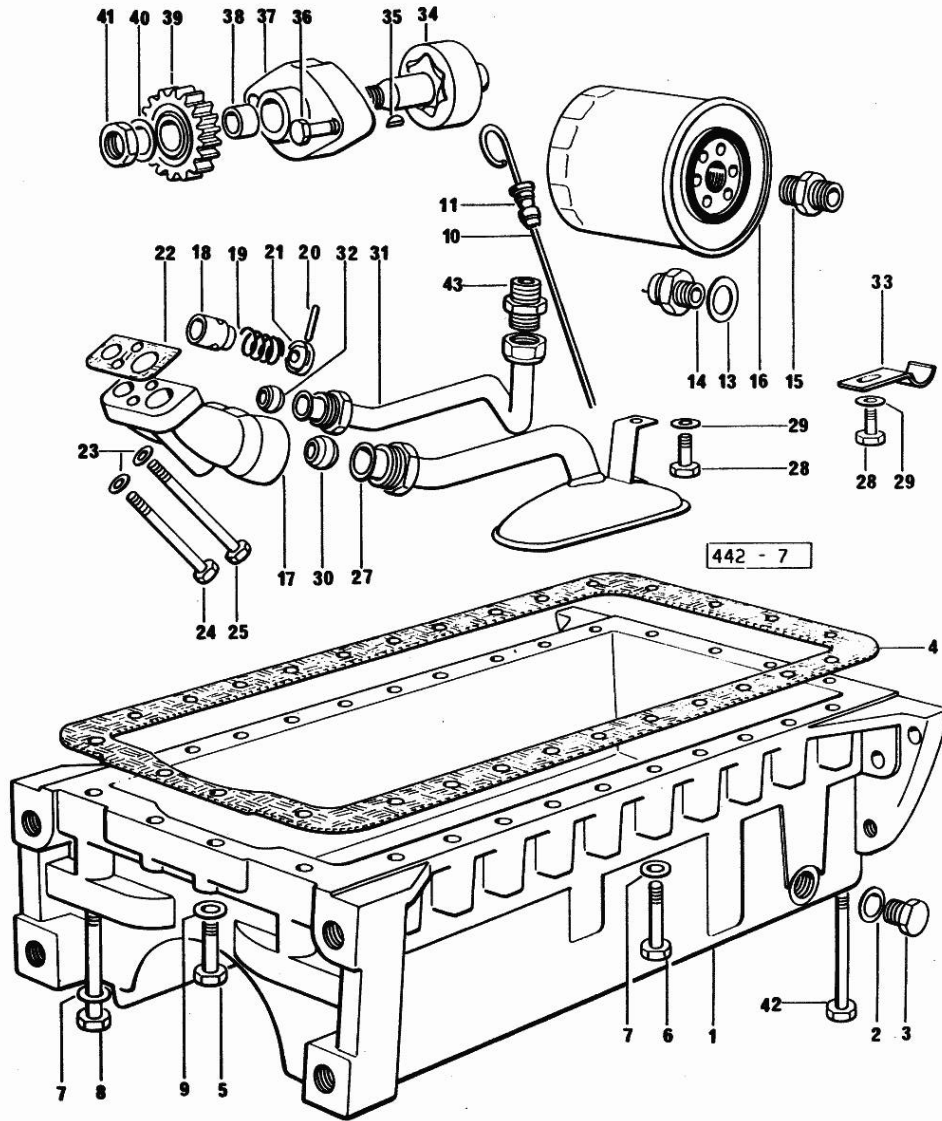


Fig.	P/n	QTY	Name
------	-----	-----	------

Notes:
[H-496 T]

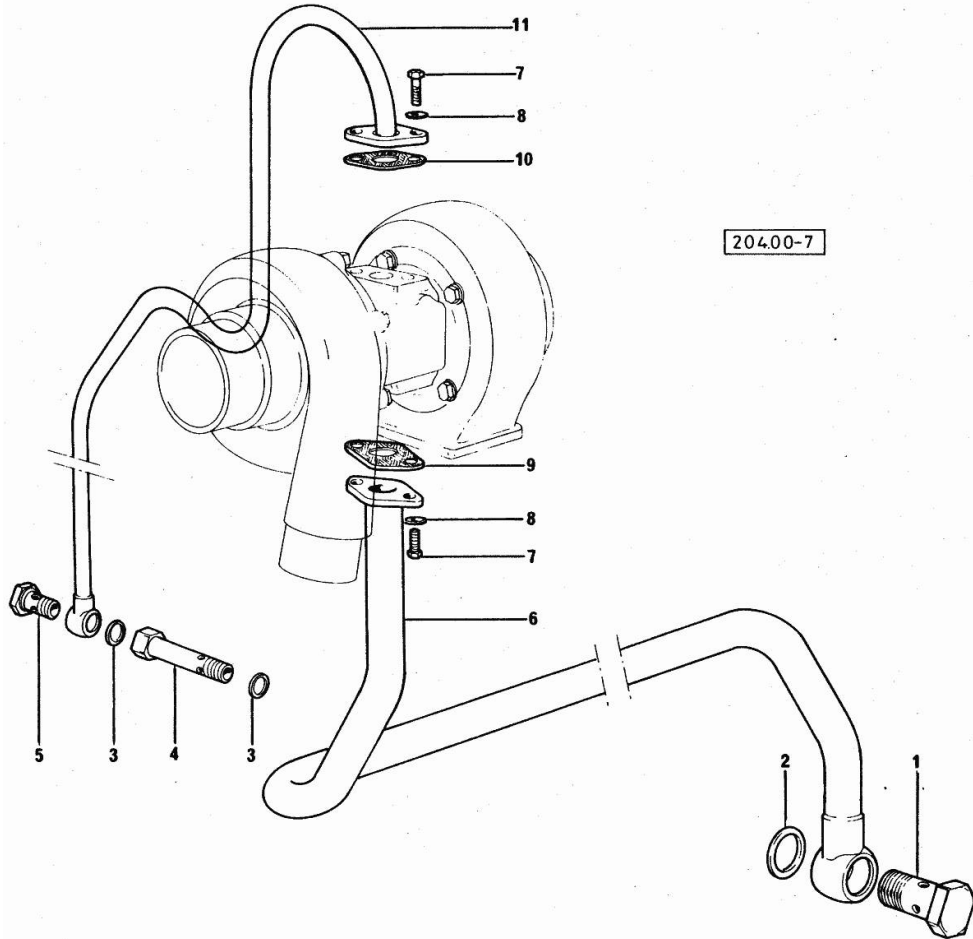
1	0.045.1559.0	1	oil sump
2	2.1560.054.0	1	gasket 21 x 26
3	2.3199.001.2	1	plug 1/2" gas
4	0.036.1512.0	1	gasket
5	2.0112.219.2	2	screw m 8 p.1.25x55
6	2.0112.224.2	20	screw m 8 p.1.25x75
7	2.1470.004.2	26	lock washer 8
8	2.0112.231.2	2	screw m 8 p.1.25 x 110
9	2.1560.004.0	2	copper gasket 8.2 x 14
10	0.059.1513.3	1	dipstick
11	2.1539.035.0	1	special oil seal
13	2.1560.008.0	1	gasket 12.2 x 18
14	2.7099.040.0/10	1	pressure switch
15	2.3339.094.1/10	1	pipe fitting m 20 p.1.5-3/4 gas
16	2.4419.340.0	1	oil filter element
17	0.052.1530.0	1	tip
18	0.052.1571.0	1	small piston
19	2.4019.270.1	1	spring 9.7x54x2
20	2.1630.213.0	1	roll pin 3x32
21	0.054.1558.0/10	1	stop
22	0.037.1557.0/20	1	gasket
23	2.1480.014.1	2	washer 8
24	2.0112.225.2	1	screw m 8 p.1.25 x 80
25	2.0112.231.2	1	screw m 8 p.1.25 x 110
27	0.044.1556.3/10	1	tube
28	2.0112.204.2	2	screw m 8 p.1.25x14
29	2.1310.004.2	2	flat washer 8.4x17
30	2.3359.014.1	1	nosepiece
31	0.059.1534.2	1	tube
32	2.3359.017.1	1	nosepiece
33	0.059.1551.0	2	bracket
34	0.044.1524.3/20	1	rotor
35	2.1720.005.0	1	key 4x5
36	2.0112.215.2	2	screw m 8 p.1.25 x 40
37	0.036.1520.3/20	1	pump casing
38	2.1559.086.0/10	1	bush
39	0.040.1521.0/10	1	gear z = 27
40	2.1310.007.2	1	flat washer 13 x 24
41	2.1121.109.2	1	self-locking nut m 12 p.1.25
42	2.0112.237.2	4	screw m 8 p.1.25x140
43	2.3339.159.1/10	1	pipe fitting

Section: ENGINE
LUBRICATION

Fig.	P/n	QTY	Name
------	-----	-----	------

Notes:
 [H-496 T]

1	2.3332.008.1	1	old part number
2	2.1560.022.0	2	gasket
3	2.1560.008.0	3	gasket 12.2 x 18
4	0.057.1552.0	1	pipe fitting
5	2.3339.184.1	1	pipe union
6	0.059.1552.3	1	tube
7	2.0112.207.2	4	screw m 8 p 1.25 x 20
8	2.1474.009.1	4	spring washer 8
9	0.057.1558.0	1	gasket
10	0.057.1553.0	1	gasket
11	0.057.1550.3	1	tube





Suggest:

For more complete manuals. Please go to the home page.

<https://www.ebooklibonline.com>

If the above button click is invalid. Please download this document first, and then click the above link to download the complete manual.

Thank you so much for reading

Section: ENGINE

FUEL SYSTEM - INJECTION PUMP

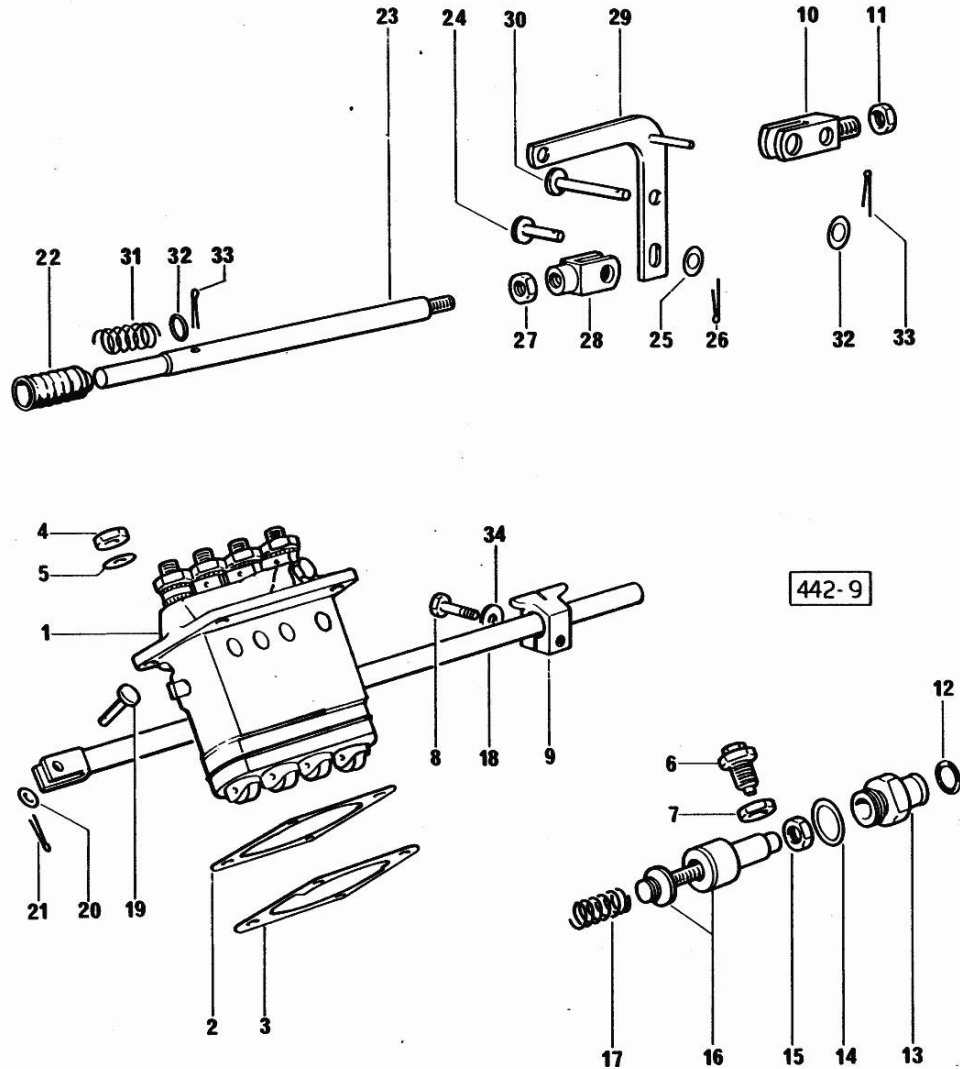


Fig.	P/n	QTY	Name
------	-----	-----	------

Notes:
[H-496 T]

1	2.4649.280.0	1	injector pump ☞ 2.4649.280.0 ☞ 01.00.12
2	0.044.1660.0		shim mm 0.1
2	0.044.1661.0		shim mm 0.20
3	0.044.1652.0		shim mm 0.1
3	0.044.1653.0		shim mm 0.20
4	2.1099.056.1	4	special nut m8 p.1
5	2.1311.006.2	4	flat washer 8
6	0.057.1657.3	1	adapter
7	2.1099.066.1	1	special nut
8	2.0112.004.2	1	screw m 6 p.1 x 14
9	0.057.1650.0	1	bracket
10	0.044.1656.0	1	support
11	2.1011.506.2	1	nut m 10 p.1
12	2.1530.015.0	1	oil seal 8.30x2.40
13	0.041.1666.0/40	1	plug
14	2.1560.019.0	1	copper gasket 24.3x30
15	2.1011.505.2	1	nut m 8 p.1
16	0.062.1652.6	1	adapter
17	2.4019.178.1/10	1	spring 14.6x34x0.8
18	0.044.1613.2	1	rod
19	2.1679.048.2	1	pin
20	2.1311.004.1	1	flat washer 6
21	2.1690.205.0	1	split pin A2x12
22	0.000.5617.0	1	guard
23	0.057.1671.0	1	ferrule
24	2.1679.048.2	1	pin
25	2.1310.002.2	1	flat washer 6.4x12.5
26	2.1690.205.0	1	split pin A2x12
27	2.1011.103.2	1	nut m 6 p.1
28	2.3510.003.2	1	fork m 6
29	0.054.1674.0	1	lever
30	2.1670.303.2	1	pin 8x18x15
31	2.4019.232.1	1	spring
32	2.1310.004.2	2	flat washer 8.4x17
33	2.1690.206.0	2	split pin
34	2.1579.455.1	1	spacer 6.2x12x14

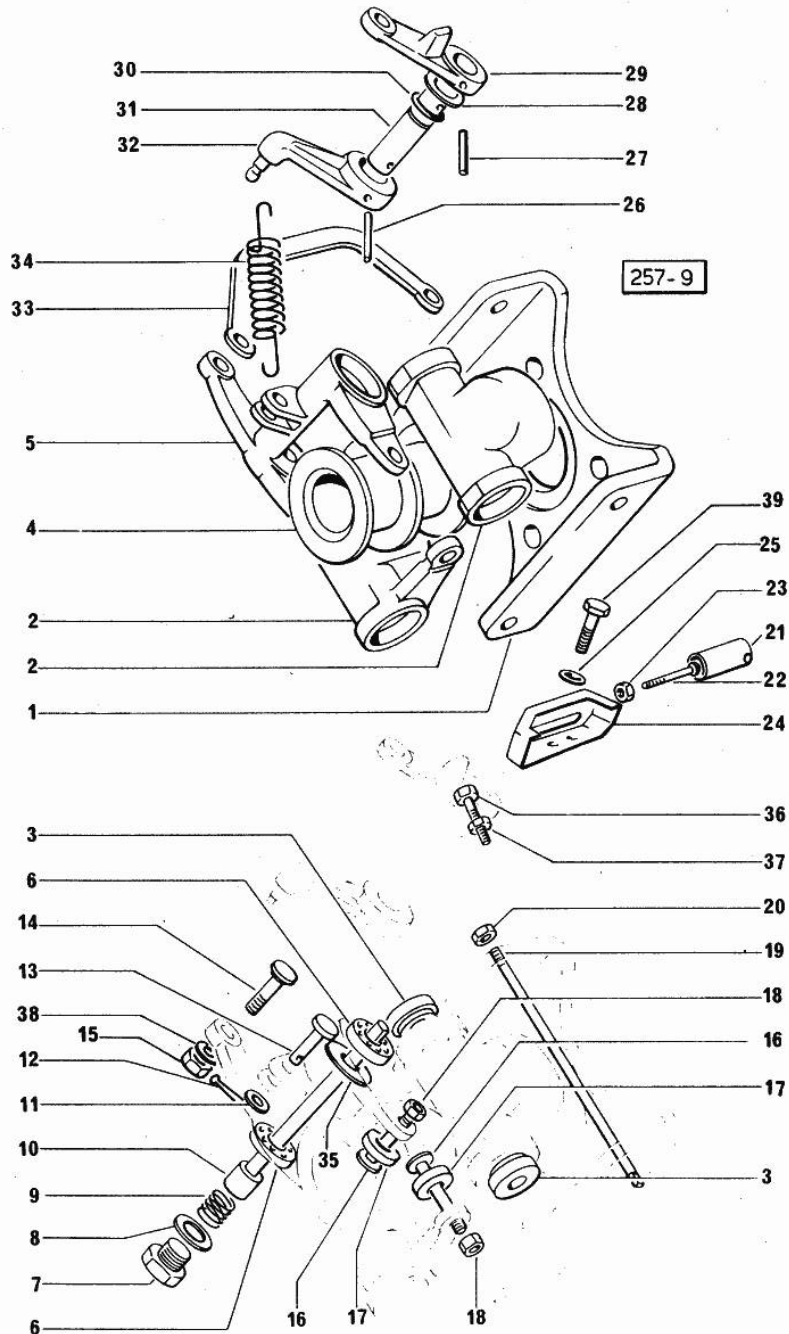
Section: ENGINE

SUPPLY-GROUND GOVERNOR

Fig.	P/n	QTY	Name
------	-----	-----	------

Notes:
[H-496 T]

1	0.062.1615.0	1	bracket
2	0.062.1616.0	2	adjust.rocker
4	0.041.1618.0	1	sleeve
5	0.062.1619.0	1	lever
6	2.2999.158.0	2	special bearing
7	2.3110.002.1	1	plug 1/4" gas
8	2.1560.008.0	1	gasket 12.2 x 18
9	2.4019.177.1	1	spring
10	0.041.1620.0	1	pin
11	2.1310.001.2	1	flat washer 5.3 x 10
12	2.1690.104.0	1	split pin a.1 5x10
13	2.1670.005.2	1	pin 5x22x20
14	0.041.1656.0	1	pin
15	2.1011.103.2	1	nut m 6 p.1
16	0.054.1654.0/10	4	pin
17	0.054.1655.0	4	roller
18	2.1019.007.1	4	special nut m 6 p.1
19	0.062.1617.0/10	2	pin
20	2.1120.305.2	2	self-locking nut m 8 p.1 x 8
21	0.024.1680.0	1	guard
22	2.0220.317.2	1	screw m 5x0.8x35
23	2.1011.102.2	1	nut m 5 p.0.7
24	0.052.1661.2/20	1	small cover
25	2.1310.002.2	2	flat washer 6.4x12.5
26	2.1630.511.0	1	roll pin 5x24
27	2.1630.410.0	1	roll pin 4 x 20
28	2.1599.141.0	1	shoulder ring 12.5x19x1.5
29	0.041.1621.0	1	lever
30	2.1530.016.0	1	oil seal 8.73 x 1.78
31	0.041.1655.0/10	1	pin
32	0.042.1621.0	1	lever
33	0.042.1622.0	1	rod
34	2.4049.095.1/10	1	spring
35	2.1599.248.1	2	shim 7x11x1
36	2.0112.009.2	1	screw m 6 p.1 x 25
37	2.1011.103.2	1	nut m 6 p.1
38	2.1481.005.1	4	washer 6, d128
39	2.0119.081.2	2	screw



<https://www.ebooklibonline.com>

Hello dear friend!

Thank you very much for reading.

Enter the link into your browser.

The full manual is available for immediate download.

<https://www.ebooklibonline.com>