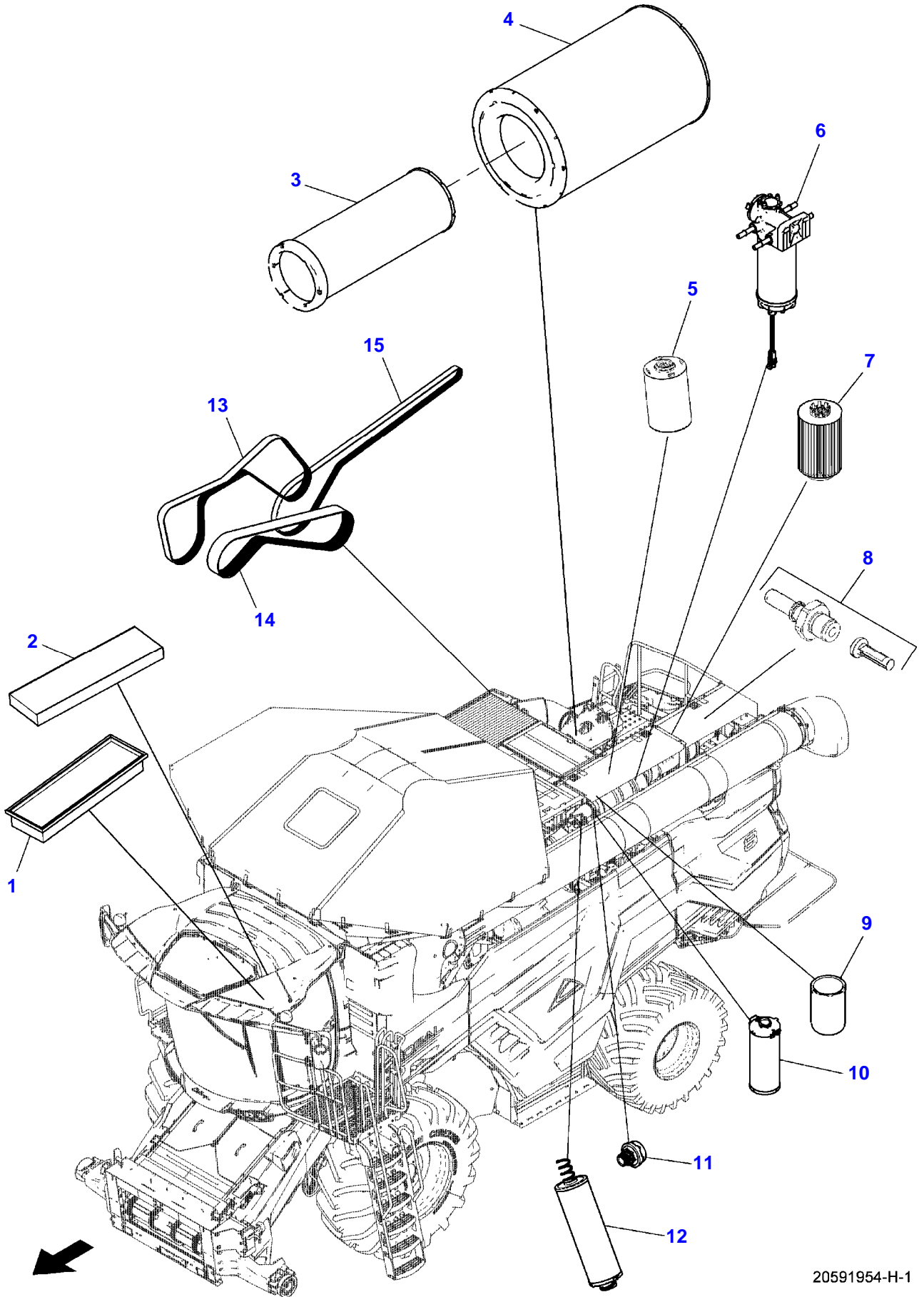


| Page Number | Page Title                          | Page Reference |
|-------------|-------------------------------------|----------------|
| 01-000-TOC  | ENGINE, FUEL AND EXHAUST SYSTEM     | 01-000-TOC     |
| 02-000-TOC  | ENGINE                              | 02-000-TOC     |
| 03-000-TOC  | ENGINE INSTALLATION                 | 03-000-TOC     |
| 04-000-TOC  | DRIVE SYSTEM                        | 04-000-TOC     |
| 05-000-TOC  | AXLES                               | 05-000-TOC     |
| 06-000-TOC  | DRIVE TRAIN SYSTEM                  | 06-000-TOC     |
| 07-000-TOC  | BRAKE SYSTEM                        | 07-000-TOC     |
| 08-000-TOC  | HYDRAULIC SYSTEM                    | 08-000-TOC     |
| 09-000-TOC  | ELECTRICAL SYSTEM                   | 09-000-TOC     |
| 10-000-TOC  | CAB                                 | 10-000-TOC     |
| 11-000-TOC  | AIR CONDITIONING AND HEATING SYSTEM | 11-000-TOC     |
| 12-000-TOC  | CHASSIS                             | 12-000-TOC     |
| 13-000-TOC  | DECALS                              | 13-000-TOC     |
| 14-000-TOC  | WHEELS                              | 14-000-TOC     |
| 15-000-TOC  | FEEDING SYSTEM                      | 15-000-TOC     |
| 16-000-TOC  | THRESHING SYSTEM                    | 16-000-TOC     |
| 17-000-TOC  | CLEANING SYSTEM                     | 17-000-TOC     |
| 18-000-TOC  | GRAIN BIN AND ELEVATOR SYSTEM       | 18-000-TOC     |
| 19-000-TOC  | DISCHARGE SYSTEM                    | 19-000-TOC     |
| 20-000-TOC  | PRECISION FARMING SYSTEMS           | 20-000-TOC     |
| 21-000-TOC  | ATTACHMENTS                         | 21-000-TOC     |
| 22-000-TOC  | ACCESSORIES                         | 22-000-TOC     |

| Page Number | Page Title   | Page Reference |
|-------------|--|----------------|
| 01-0001     | FILTER AND BELT GUIDE  | 2328646        |
| 01-0002     | ENGINE T4F - ENGINE, ALTERNATOR, STARTER, AIR CONDITIONER<br>T4F           | 2316520        |
| 01-0003     | COOLING PACKAGE ASSEMBLY   | 2315404        |
| 01-0004     | RADIATOR AND COOLERS   | 2315405        |
| 01-0005     | FAN & SHROUD   | 2315407        |
| 01-0006     | COOLANT AND AIR TUBES<br>PAGE 1 OF 2                                       | 2313974        |
| 01-0007     | COOLANT AND AIR TUBES<br>PAGE 2 OF 2                                       | 2313975        |
| 01-0008     | FUEL SYSTEM ASSEMBLY   | 2315408        |
| 01-0009     | FUEL TANK ASSEMBLY, 1000 LITER, 264 GALLON<br>1000L<br>264 GALLONS         | 2312345        |
| 01-0010     | FUEL TANK ASSEMBLY, 1250 LITER, 330 GALLON<br>1250L<br>330 GALLONS         | 2312346        |
| 01-0011     | FUEL TANK ASSEMBLY, 1500 LITER, 396 GALLON                                 | 2327836        |
| 01-0012     | DEF TANK   | 2312347        |
| 01-0013     | DEF SYSTEM INSTALLATION<br>PAGE 2 OF 2                                     | 2316523        |
| 01-0014     | DEF - FILTERS  | 2317516        |
| 01-0015     | ENGINE : STAGE 4 / TIER 4F<br>EXPANSION TANK<br>ENGINE : STAGE 4 / TIER 4F | 2317515        |
| 01-0016     | EXHAUST GROUP  | 2316522        |
| 01-0017     | ASPIRATOR GROUP - MOUNT  | 2315406        |
| 01-0018     | COMPRESSED AIR   | 2319481        |
| 01-0019     | COMPRESSED AIR   | 2319482        |

IDEAL CLASS 8 COMBINE  
20591954-H-1



20591954-H-1

**<https://www.ebooklibonline.com>**

Hello dear friend!

Thank you very much for reading.

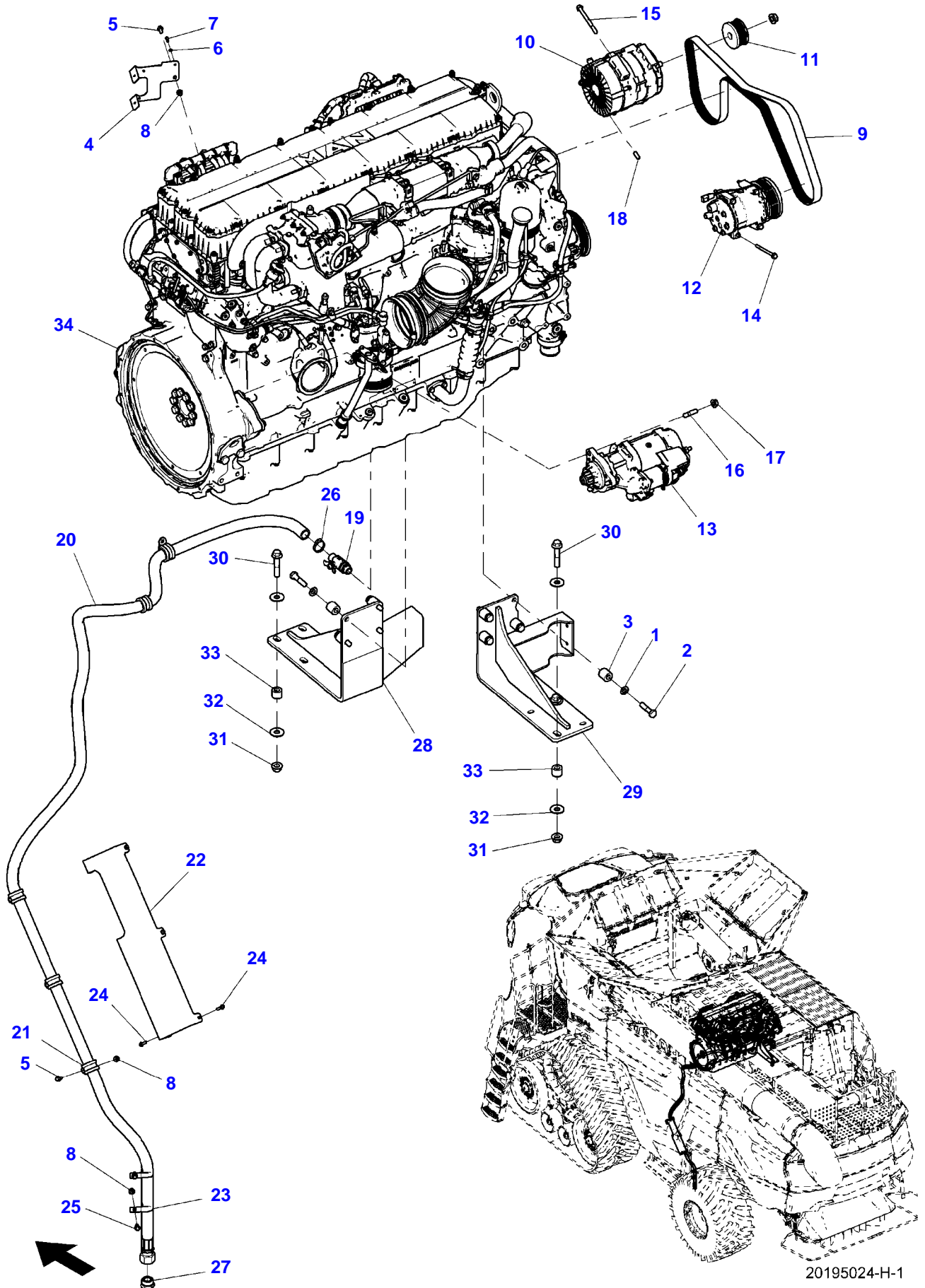
Enter the link into your browser.

The full manual is available for immediate download.

**<https://www.ebooklibonline.com>**

| Item | Part Number | Qty | Description<br>Comments        | Technical Specification |
|------|-------------|-----|--------------------------------|-------------------------|
| 1    | 71484324    | 1   | AIR FILTER                     |                         |
| 2    | 71468247    | 1   | AIR FILTER                     |                         |
| 3    | ACP0287840  | 1   | SECONDARY AIR FILTER ELEMENT   |                         |
| 4    | ACP0287830  | 1   | PRIMARY AIR FILTER ELEMENT     |                         |
| 5    | ACP0154860  | 1   | FILTER CARTRIDGE               |                         |
| 6    | ACW4182090  | 1   | FUEL FILTER                    |                         |
| 7    | ACP0153530  | 1   | FILTER ELEMENT                 |                         |
| 8    | ACP0300680  | 1   | SUCTION FILTER                 |                         |
| 9    | ACW1330790  | 1   | FILTER ELEMENT                 |                         |
| 10   | ACW1344920  | 1   | OIL FILTER                     |                         |
|      | ACW1344930  | 1   | INDICATOR                      |                         |
|      | ACX0102830  | 1   | FILTER ELEMENT                 |                         |
| 11   | ACX0102560  | 1   | HYDRAULIC TANK FILTER BREATHER |                         |
| 12   | ACW0742020  | 1   | OIL FILTER                     |                         |
|      | ACX0102560  | 1   | HYDRAULIC TANK FILTER BREATHER |                         |
|      | ACW0703380  | 1   | SENSOR                         |                         |
|      | ACW0741900  | 1   | FILTER CARTRIDGE               |                         |
| 13   | 72619522    | 1   | BELT                           |                         |
| 14   | ACW0936010  | 1   | COOLING FAN V-BELT             | CL8                     |
| 15   | ACW1752340  | 1   | BELT                           |                         |

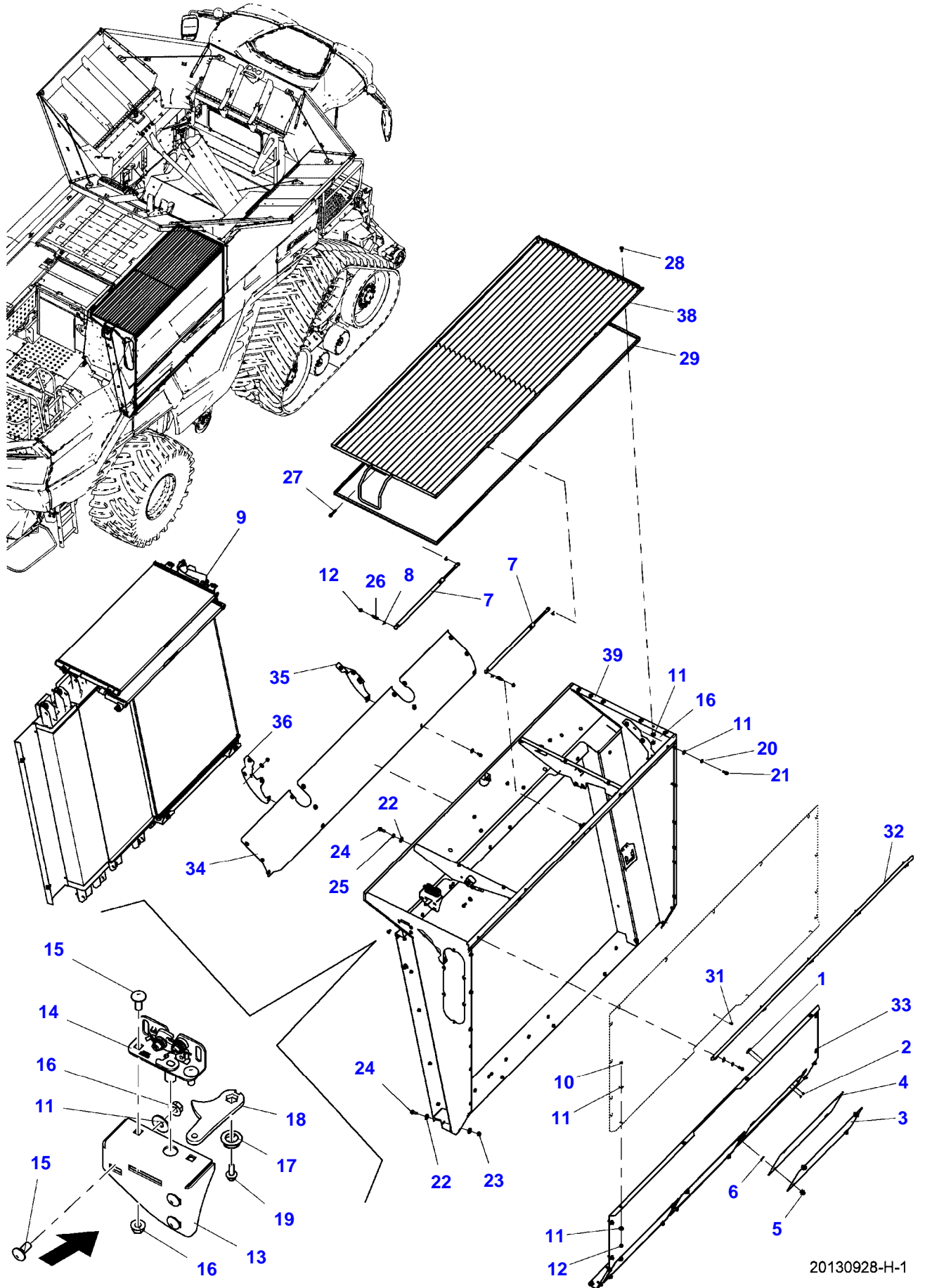
IDEAL CLASS 8 COMBINE  
20195024-H-1



20195024-H-1

| Item       | Part Number | Qty | Description<br>Comments     | Technical Specification      |
|------------|-------------|-----|-----------------------------|------------------------------|
| <b>T4F</b> |             |     |                             |                              |
| 1          | ACW1064110  | 8   | FLAT WASHER                 | ISO887CN 14-200HV FLZN1      |
| 2          | ACW1955100  | 8   | HEX BOLT                    | DIN931 M14X2X60-10 FLZN1     |
| 3          | ACW1023380  | 8   | SPACER                      |                              |
| 4          | ACW110126A  | 1   | HARNESS SUPPORT             |                              |
| 5          | ACW1041210  | 4   | HEXAGON FLANGE BOLT         | ISO4162 M8X1.25X20-8 FLZN1   |
| 6          | ACW1064090  | 1   | FLAT WASHER                 | ISO887CN 5-200HV ELZN3       |
| 7          | 339721X1    | 1   | HEXAGONAL HEAD BOLT         | M5 X 16 ISO 8.8 ZN           |
| 8          | ACW1023930  | 6   | HEX FLANGE NUT              | EN1661 M8X1.25-10 FLZN1      |
| 9          | 72619522    | 1   | BELT                        |                              |
| 10         | ACW1754450  | 1   | ALTERNATOR                  | 12V, 325A                    |
| 11         | ACW1752890  | 1   | ALTERNATOR SHEAVE           | 8PK                          |
| 12         | ACW0479350  | 1   | AIR CONDITIONING COMPRESSOR |                              |
| 13         | ACW7581530  | 1   | STARTER                     | 24V, SAE NO.3                |
| 14         | ACW0883700  | 4   | HEXAGON FLANGE BOLT         | EN1665 M8X1.25X100-8 VDA30   |
| 15         | ACW1040890  | 4   | HEXAGON FLANGE BOLT         | ISO4162 M10X1.5X100-10 FLZN1 |
| 16         | ACW1066150  | 3   | SOCKET HEAD SETSCREW        | ISO4762 M12X1.75X40-10 FLZN1 |
| 17         | ACW1023950  | 3   | HEX FLANGE NUT              | EN1661 M12X1.75-10 FLZN1     |
| 18         | ACW1066260  | 1   | SET SCREW                   | ISO4029 M10X1.5X25-45H FLZN1 |
| 19         | ACW1762570  | 1   | OIL DRAIN VALVE             |                              |
| 20         | ACW1930360  | 1   | OIL DRAIN HOSE              | 12499                        |
| 21         | ACW1135600  | 5   | CLAMP                       | ?35 MM                       |
| 22         | ACW115446A  | 1   | SHIELD                      |                              |
| 23         | 70937684    | 2   | J-CLIP                      | 1-1/4" ID X .406" HOLE       |
| 24         | ACW1041160  | 6   | HEXAGON FLANGE BOLT         | ISO4162 M6X1X20-8 FLZN1      |
| 25         | ACW1041130  | 2   | HEXAGON FLANGE BOLT         | ISO4162 M8X1.25X16-8 FLZN1   |
| 26         | 70921912    | 1   | HOSE CLAMP                  | 1.06"-2.0" DIA               |
| 27         | AG519380    | 1   | PLUG                        |                              |
| 28         | ACW3796730  | 1   | FRONT SUPPORT               |                              |
| 29         | ACW3796620  | 1   | SUPPORT                     |                              |
| 30         | ACW1041070  | 4   | HEXAGON FLANGE BOLT         | ISO4162 M16X2X80-10 FLZN1    |
| 31         | ACW1027170  | 4   | HEX FLANGE TOP LOCK NUT     | ISO7044 M16X2-8 FLZN1        |
| 32         | ACW1628590  | 8   | FLAT WASHER                 | ISO887CZ 16-200HV FLZN1      |
| 33         | ACW0807420  | 4   | SPACER                      |                              |
| 34         | ACW1207530  | 1   | ENGINE                      | 12.4L                        |

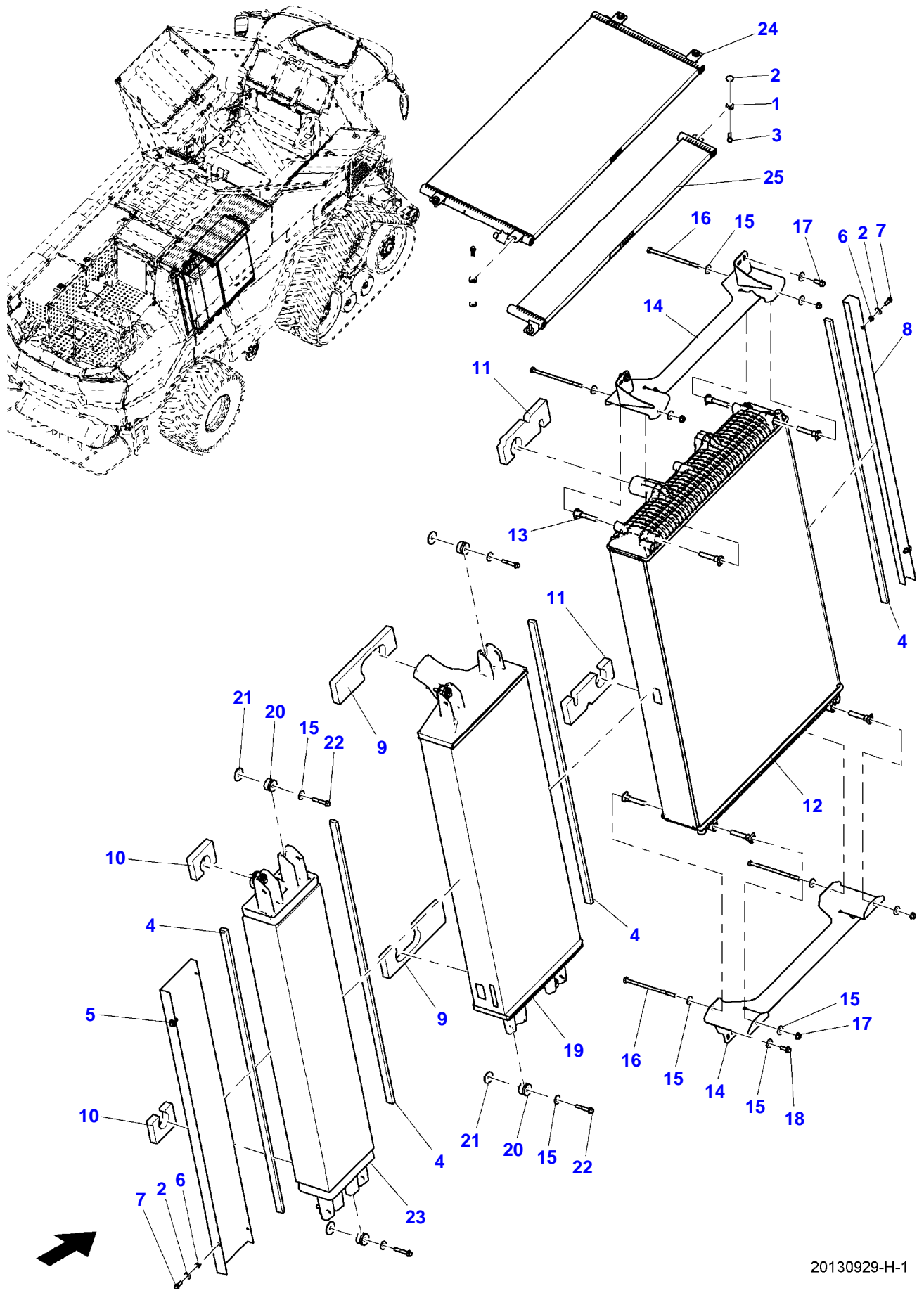
IDEAL CLASS 8 COMBINE  
20130928-H-1



20130928-H-1

| Item | Part Number | Qty | Description<br>Comments              | Technical Specification       |
|------|-------------|-----|--------------------------------------|-------------------------------|
| 1    | ACW2010490  | 12  | RECEPTACLE                           |                               |
| 2    | 70923398    | 24  | POP RIVET                            | 5/32" X 1/4"                  |
| 3    | ACW2000910  | 3   | PANEL                                |                               |
| 4    | ACW201069A  | 3   | SEAL                                 |                               |
| 5    | 72629914    | 12  | PUSH ROD                             | ?28 MM                        |
| 6    | 72629916    | 12  | LOCK WASHER                          |                               |
| 7    | ACW4352460  | 2   | GAS SPRING                           |                               |
| 8    | 536250D1    | 4   | RETAINING CLIP                       |                               |
| 9    |             | 1   |                                      |                               |
|      |             |     | SEE PAGE 01-0004                     |                               |
| 10   | ACW1041210  | 22  | HEXAGON FLANGE BOLT                  | ISO4162 M8X1.25X20-8 FLZN1    |
| 11   | ACW1628560  | 77  | FLAT WASHER                          | ISO887CL 8-200HV FLZN1        |
| 12   | ACW1027140  | 25  | HEX FLANGE NUT                       | ISO7044 M8X1.25-8 FLZN1       |
| 13   | ACX0032480  | 1   | LATCH MOUNT                          |                               |
| 14   | 71450072    | 1   | LATCH                                |                               |
| 15   | ACW0997800  | 5   | ROUND HEAD SQUARE NECK CARRIAGE BOLT | ISO8678 M8X1.25X20-8 FLZN1    |
| 16   | ACW1023930  | 11  | HEX FLANGE NUT                       | EN1661 M8X1.25-10 FLZN1       |
| 17   | 700143414   | 1   | LEVER RETAINER                       |                               |
| 18   | ACX0032790  | 1   | LATCH LEVER                          |                               |
| 19   | ACW1041150  | 1   | HEXAGON FLANGE BOLT                  | ISO4162 M6X1X16-8 FLZN1       |
| 20   | ACW1066960  | 24  | BELLEVILLE WASHER                    | DIN6796 8X18X2 FLZN1          |
| 21   | ACW1493700  | 24  | HEXAGON FLANGE BOLT                  | ISO4162 M8X1.25X25-10 FLZN1   |
| 22   | ACW1628570  | 14  | FLAT WASHER                          | ISO887CL 10-200HV FLZN1       |
| 23   | ACW1027150  | 6   | HEX NUT                              | ISO7044 M10X1.5-8 FLZN1       |
| 24   | ACW1040790  | 8   | HEXAGON FLANGE BOLT                  | ISO4162 M10X1.5X30-10 FLZN1   |
| 25   | ACW1066970  | 2   | BELLEVILLE WASHER                    | DIN6796 10X23X2.5 FLZN1       |
| 26   | ACW2096420  | 2   | BALL STUD                            | 12499                         |
| 27   | ACW1041260  | 1   | HEXAGON FLANGE BOLT                  | ISO4162 M8X1.25X50-8 FLZN1    |
| 28   | ACW0997810  | 6   | ROUND HEAD SQUARE NECK CARRIAGE BOLT | ISO8678 M8X1.25X25-8 FLZN1    |
| 29   | ACX0031840  | 1   | SEAL                                 |                               |
| 31   | ACW1061360  | 1   | BLIND RIVET NUT                      | HRIV M8 F 0.5-3.0 ST OP ZNCR3 |
| 32   | ACW0679250  | 1   | ANGLE SUPPORT                        | 20307                         |
| 33   | ACW1997520  | 1   | PANEL                                |                               |
| 34   | ACW0627450  | 1   | PANEL                                | 20307                         |
| 35   | ACW0669290  | 1   | BAFFLE PLATE                         | 20307                         |
| 36   | ACW0669310  | 1   | BAFFLE PLATE                         | 20307                         |
| 38   | ACW115299B  | 1   | SCREEN                               |                               |
| 39   | ACW0900990  | 1   | COOLER                               |                               |

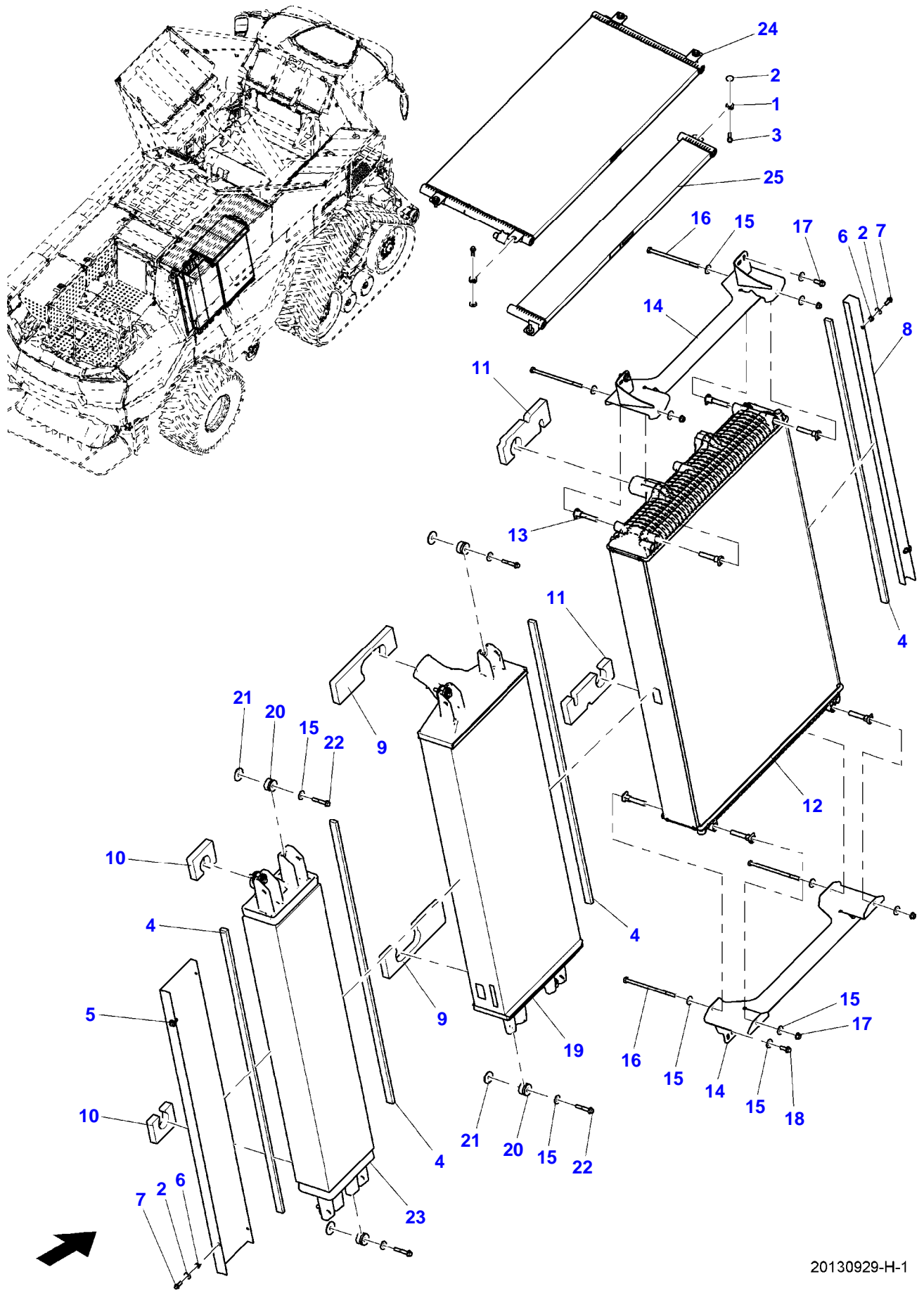
IDEAL CLASS 8 COMBINE  
20130929-H-1



20130929-H-1

| Item | Part Number | Qty | Description<br>Comments | Technical Specification       |
|------|-------------|-----|-------------------------|-------------------------------|
| 1    | ACX0034030  | 6   | ISOLATOR                | M8                            |
| 2    | ACW1628560  | 10  | FLAT WASHER             | ISO887CL 8-200HV FLZN1        |
| 3    | ACW1041240  | 6   | HEXAGON FLANGE BOLT     | ISO4162 M8X1.25X35-8 FLZN1    |
| 4    | ACX0034070  | 4   | FOAM STRIP              |                               |
| 5    | ACW1152840  | 1   | SEAL                    |                               |
| 6    | ACW1061360  | 4   | BLIND RIVET NUT         | HRIV M8 F 0.5-3.0 ST OP ZNCR3 |
| 7    | ACW1493700  | 4   | HEXAGON FLANGE BOLT     | ISO4162 M8X1.25X25-10 FLZN1   |
| 8    | ACW0481220  | 1   | SEAL                    |                               |
| 9    | ACW0708690  | 2   | FOAM SEAL               | 28206                         |
| 10   | ACW0702630  | 2   | FOAM SEAL               | 28206                         |
| 11   | ACW0629360  | 2   | FOAM SEAL               | 28206                         |
| 12   | ACW1153920  | 1   | COOLER                  | 843 X 1200 X 145              |
| 13   | ACW046469A  | 8   | ISOLATOR                |                               |
| 14   | ACX0032150  | 2   | CHANNEL MOUNT           | 20307                         |
| 15   | ACW1628570  | 20  | FLAT WASHER             | ISO887CL 10-200HV FLZN1       |
| 16   | ACW0465250  | 4   | HEX CAP SCREW           |                               |
| 17   | ACW1023940  | 4   | HEX FLANGE NUT          | ISO4161 M10X1.5-10 FLZN1      |
| 18   | ACW1040790  | 4   | HEXAGON FLANGE BOLT     | ISO4162 M10X1.5X30-10 FLZN1   |
| 19   | ACW1153930  | 1   | CHARGE AIR COOLER       | 453 X 1200 X 132              |
| 20   | ACX0032430  | 8   | ISOLATOR                | 12499                         |
| 21   | ACW1628350  | 8   | FLAT WASHER             | ISO887CZ 10-200HV FLZN1       |
| 22   | ACW1040840  | 8   | HEXAGON FLANGE BOLT     | M10 X 60 (1.5) ISO 10 FLZN1   |
| 23   | ACW1153950  | 1   | HYDRAULIC OIL COOLER    | 263 X 1168 X 145              |
| 24   | ACW1153960  | 1   | COOLER CONDENSOR        | 450 X 1000 X 27               |
| 25   | ACW1153970  | 1   | FUEL COOLER             | 116 X 1000 X 27               |

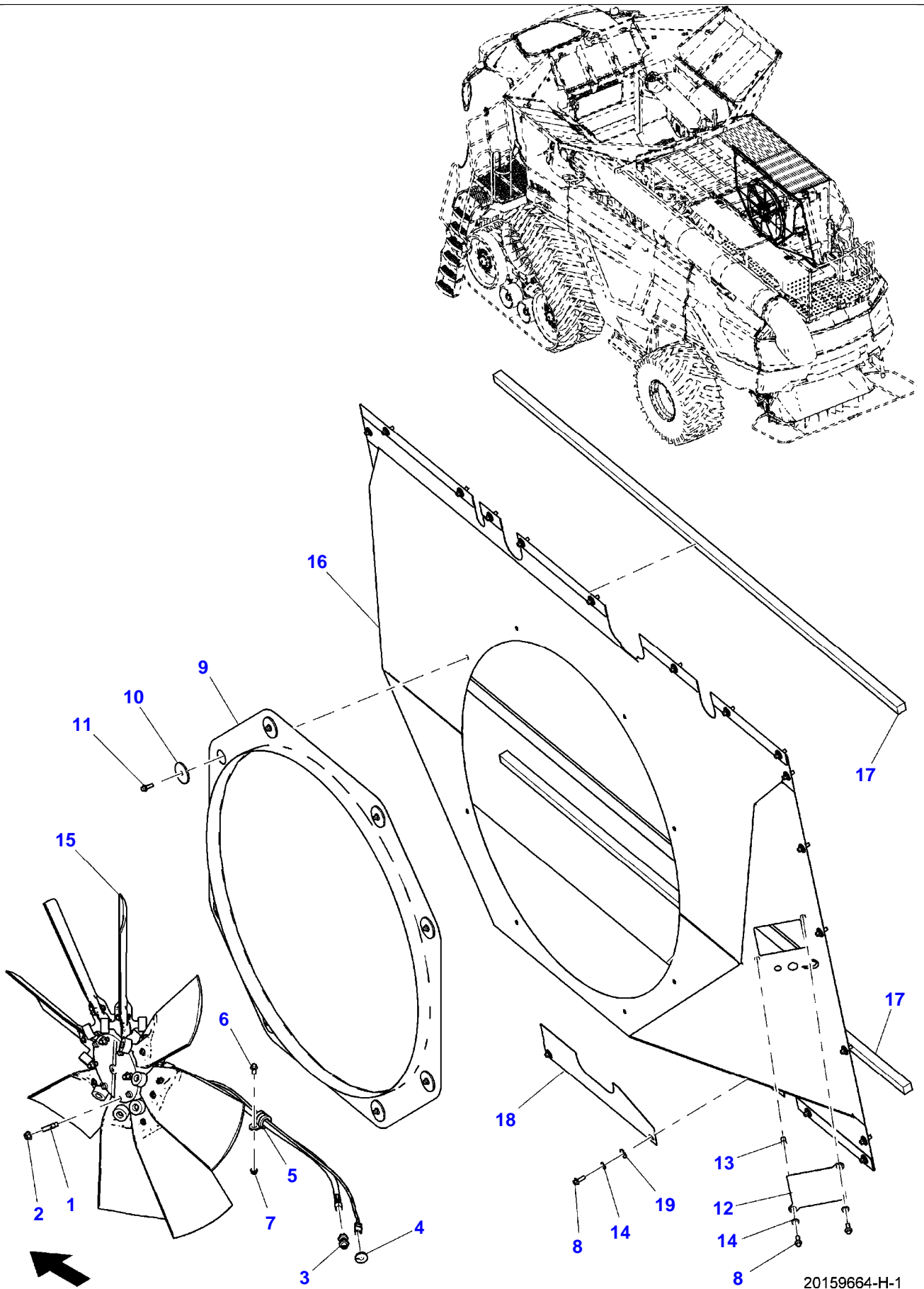
IDEAL CLASS 8 COMBINE  
20130929-H-1



20130929-H-1

| Item | Part Number | Qty | Description<br>Comments | Technical Specification       |
|------|-------------|-----|-------------------------|-------------------------------|
| 1    | ACX0034030  | 6   | ISOLATOR                | M8                            |
| 2    | ACW1628560  | 10  | FLAT WASHER             | ISO887CL 8-200HV FLZN1        |
| 3    | ACW1041240  | 6   | HEXAGON FLANGE BOLT     | ISO4162 M8X1.25X35-8 FLZN1    |
| 4    | ACX0034070  | 4   | FOAM STRIP              |                               |
| 5    | ACW1152840  | 1   | SEAL                    |                               |
| 6    | ACW1061360  | 4   | BLIND RIVET NUT         | HRIV M8 F 0.5-3.0 ST OP ZNCR3 |
| 7    | ACW1493700  | 4   | HEXAGON FLANGE BOLT     | ISO4162 M8X1.25X25-10 FLZN1   |
| 8    | ACW0481220  | 1   | SEAL                    |                               |
| 9    | ACW0708690  | 2   | FOAM SEAL               | 28206                         |
| 10   | ACW0702630  | 2   | FOAM SEAL               | 28206                         |
| 11   | ACW0629360  | 2   | FOAM SEAL               | 28206                         |
| 12   | ACW1153920  | 1   | COOLER                  | 843 X 1200 X 145              |
| 13   | ACW046469A  | 8   | ISOLATOR                |                               |
| 14   | ACX0032150  | 2   | CHANNEL MOUNT           | 20307                         |
| 15   | ACW1628570  | 20  | FLAT WASHER             | ISO887CL 10-200HV FLZN1       |
| 16   | ACW0465250  | 4   | HEX CAP SCREW           |                               |
| 17   | ACW1023940  | 4   | HEX FLANGE NUT          | ISO4161 M10X1.5-10 FLZN1      |
| 18   | ACW1040790  | 4   | HEXAGON FLANGE BOLT     | ISO4162 M10X1.5X30-10 FLZN1   |
| 19   | ACW1153930  | 1   | CHARGE AIR COOLER       | 453 X 1200 X 132              |
| 20   | ACX0032430  | 8   | ISOLATOR                | 12499                         |
| 21   | ACW1628350  | 8   | FLAT WASHER             | ISO887CZ 10-200HV FLZN1       |
| 22   | ACW1040840  | 8   | HEXAGON FLANGE BOLT     | M10 X 60 (1.5) ISO 10 FLZN1   |
| 23   | ACW1153950  | 1   | HYDRAULIC OIL COOLER    | 263 X 1168 X 145              |
| 24   | ACW1153960  | 1   | COOLER CONDENSOR        | 450 X 1000 X 27               |
| 25   | ACW1153970  | 1   | FUEL COOLER             | 116 X 1000 X 27               |

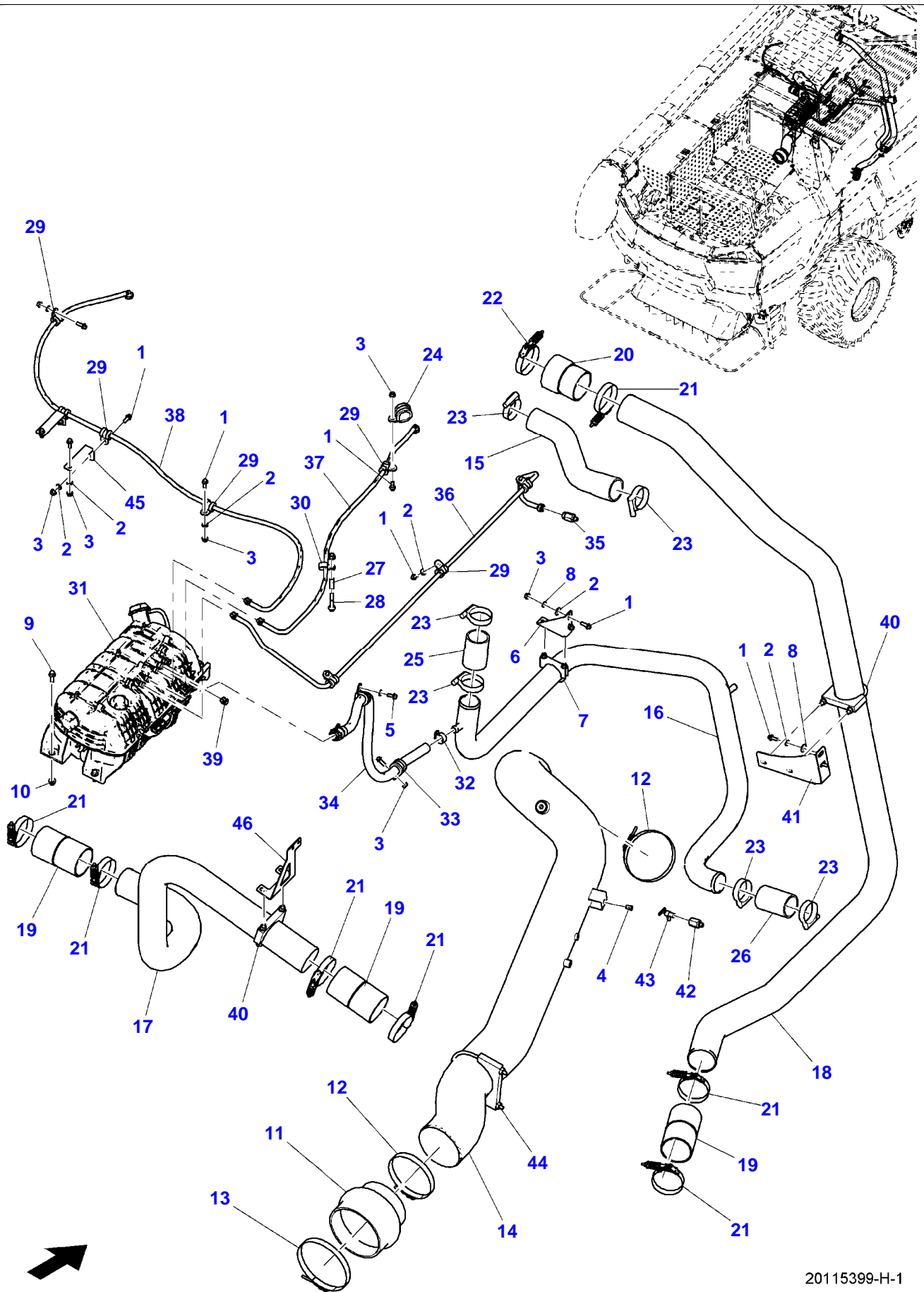
IDEAL CLASS 8 COMBINE  
20159664-H-1



20159664-H-1

| Item | Part Number | Qty | Description<br>Comments | Technical Specification       |
|------|-------------|-----|-------------------------|-------------------------------|
| 1    | ACW1000090  | 4   | STUD BOLT               | DIN939 M10X1.5X35-8 VDA30     |
| 2    | ACW1023940  | 4   | HEX FLANGE NUT          | ISO4161 M10X1.5-10 FLZN1      |
| 3    | 6269644M1   | 1   | CONNECTOR               |                               |
| 4    | 71395752    | 1   | GROMMET                 | 1-1/4" OD                     |
| 5    | ACW1135530  | 1   | CLAMP                   | ?20 MM                        |
| 6    | ACW1041210  | 1   | HEXAGON FLANGE BOLT     | ISO4162 M8X1.25X20-8 FLZN1    |
| 7    | ACW1027140  | 1   | HEX FLANGE NUT          | ISO7044 M8X1.25-8 FLZN1       |
| 8    | ACW1493700  | 29  | HEXAGON FLANGE BOLT     | ISO4162 M8X1.25X25-10 FLZN1   |
| 9    | ACW3404700  | 1   | AIR-COOLING FAN         |                               |
| 10   | 382069      | 8   | FLAT WASHER             | 13/32" X 2-1/4" X 1/8"        |
| 11   | ACW1041220  | 8   | HEXAGON FLANGE BOLT     | ISO4162 M8X1.25X25-8 FLZN1    |
| 12   | ACW2003400  | 1   | PLATE COVER             |                               |
| 13   | 350339317   | 2   | BLIND RIVET NUT         | HRIV M8 T 0.5-3.5 ST OP ZN8K+ |
| 14   | ACW1066960  | 29  | BELLEVILLE WASHER       | DIN6796 8X18X2 FLZN1          |
| 15   | ACW1207700  | 1   | FAN                     |                               |
| 16   | ACW202032A  | 1   | FAN SHROUD              |                               |
| 17   | ACW1023630  | 2   | FOAM STRIP              |                               |
| 18   | ACW0709640  | 1   | SHROUD COVER            | 12499                         |
| 19   | ACW1628560  | 27  | FLAT WASHER             | ISO887CL 8-200HV FLZN1        |

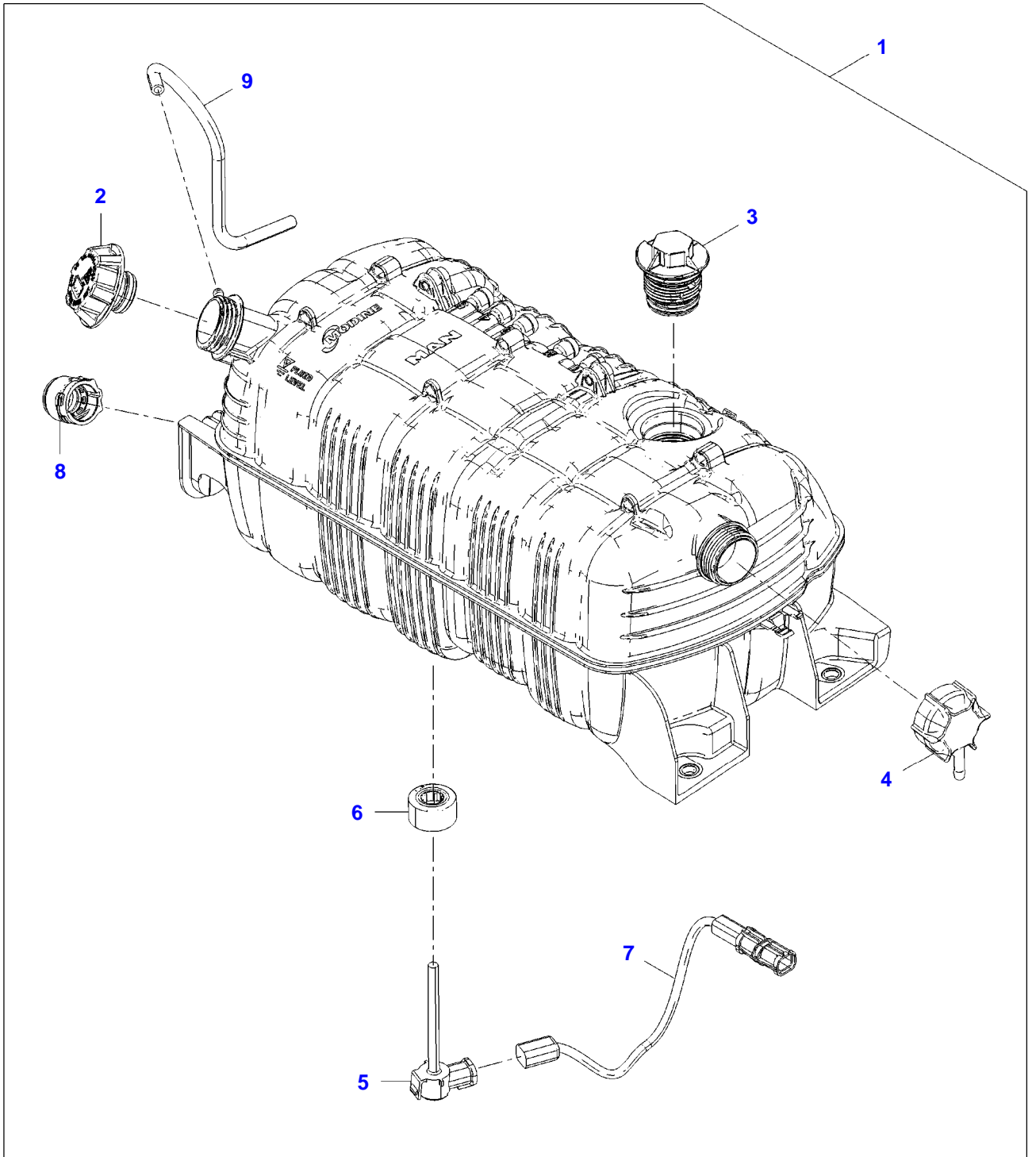
IDEAL CLASS 8 COMBINE  
20115399-H-1



20115399-H-1

| Item        | Part Number | Qty | Description<br>Comments | Technical Specification       |
|-------------|-------------|-----|-------------------------|-------------------------------|
| PAGE 1 OF 2 |             |     |                         |                               |
| 1           | ACW1493700  | 15  | HEXAGON FLANGE BOLT     | ISO4162 M8X1.25X25-10 FLZN1   |
| 2           | ACW1066960  | 14  | BELLEVILLE WASHER       | DIN6796 8X18X2 FLZN1          |
| 3           | ACW1023930  | 10  | HEX FLANGE NUT          | EN1661 M8X1.25-10 FLZN1       |
| 4           | 350339317   | 1   | BLIND RIVET NUT         | HRIV M8 T 0.5-3.5 ST OP ZN8K+ |
| 5           | ACW1041210  | 1   | HEXAGON FLANGE BOLT     | ISO4162 M8X1.25X20-8 FLZN1    |
| 6           | ACW1997210  | 1   | SUPPORT                 |                               |
| 7           | W247852B    | 1   | FILTER BRACKET          |                               |
| 8           | ACW1628560  | 4   | FLAT WASHER             | ISO887CL 8-200HV FLZN1        |
| 9           | ACW1040790  | 4   | HEXAGON FLANGE BOLT     | ISO4162 M10X1.5X30-10 FLZN1   |
| 10          | ACW1023940  | 5   | HEX FLANGE NUT          | ISO4161 M10X1.5-10 FLZN1      |
| 11          | 72526295    | 1   | REDUCER                 | 7IN TO 6IN                    |
| 12          | 71443277    | 2   | T-BOLT CLAMP            | 6-1/4"                        |
| 13          | 71441561    | 1   | T-BOLT CLAMP            | 7-1/4" ID                     |
| 14          | ACW2007050  | 1   | INTAKE TUBE             | CL8                           |
| 15          | ACW042515A  | 1   | RADIATOR HOSE           |                               |
| 16          | ACW1972530  | 1   | RADIATOR TUBE           |                               |
| 17          | ACW0719550  | 1   | AIR TUBE                |                               |
| 18          | ACW1933390  | 1   | AIR TUBE                |                               |
| 19          | 71464065    | 3   | CHARGE AIR CONNECTOR    | 3.504MM X 3.898MM X 6.417MM   |
| 20          | ACW1934020  | 1   | CONNECTOR               |                               |
| 21          | 71470297    | 7   | SPRING CLAMP            |                               |
| 22          | ACW0719420  | 1   | SPRING CLAMP            | 4.13"                         |
| 23          | 71366540    | 6   | CONSTANT TORQUE CLAMP   | 3.110" OD TO 2.245" OD        |
| 24          | ACW1979490  | 1   | PIPE CLAMP              |                               |
| 25          | ACW0425090  | 1   | CONNECTOR               |                               |
| 26          | ACX0032570  | 1   | CONNECTOR               |                               |
| 27          | ACW0719450  | 1   | SPACER                  | 12499                         |
| 28          | ACW1040840  | 1   | HEXAGON FLANGE BOLT     | M10 X 60 (1.5) ISO 10 FLZN1   |
| 29          | ACW1135470  | 8   | PIPE CLAMP              |                               |
| 30          | 70932619    | 1   | P-CLIP                  | 1/2"                          |
| 31          |             | 1   | SEE PAGE 01-0015        |                               |
| 32          | AG561229    | 1   | HOSE CLAMP              | 13/16"-1-3/4" , SAE 20 ,SS    |
| 33          | ACW1986490  | 2   | CLAMPING PIPE           |                               |
| 34          | ACW2161900  | 1   | HOSE ASSY               |                               |
| 35          | ACW1207480  | 1   | ADAPTER                 |                               |
| 36          | ACW194947A  | 1   | COOLANT                 |                               |
| 37          | ACW1949480  | 1   | COOLANT LINE            |                               |
| 38          | ACW1956090  | 1   | COOLANT LINE            |                               |
| 39          | ACW0926030  | 2   | PLUG                    | 17199                         |
| 40          | 700738445   | 2   | EXHAUST CLAMP           | 3/8"-16, 3-1/2"               |
| 41          | ACW047904A  | 1   | TUBE SUPPORT            |                               |
| 42          | ACW2023930  | 1   | ADAPTER                 |                               |
| 43          | 70933036    | 1   | DRAIN VALVE             | 1/4" NPT                      |
| 44          | 8020125     | 1   | EXHAUST CLAMP           |                               |
| 45          | ACW1984810  | 2   | BRACKET                 |                               |
| 46          | ACW198689A  | 1   | CLAMP PLATE             |                               |

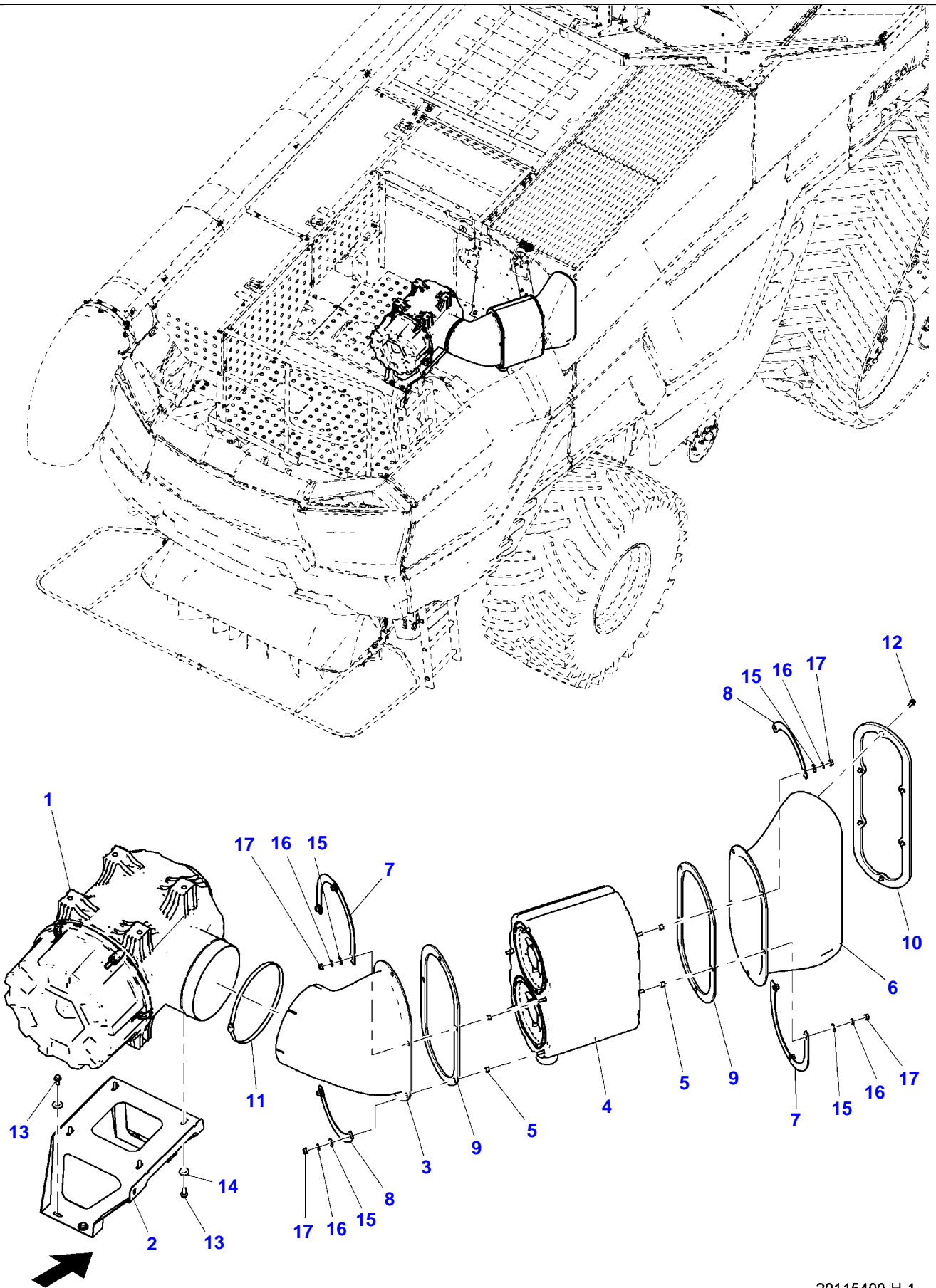
IDEAL CLASS 8 COMBINE  
19721591-M-1



19721591-M-1

| Item                              | Part Number | Qty | Description<br>Comments |
|-----------------------------------|-------------|-----|-------------------------|
| <b>ENGINE : STAGE 4 / TIER 4F</b> |             |     |                         |
| 1                                 | 72625912    | 1   | EXPANSION TANK          |
| 2                                 | 72624800    | 1   | TANK CAP                |
| 3                                 | 72624801    | 1   | VALVE                   |
| 4                                 | 72624802    | 1   | VALVE                   |
| 5                                 | 72624805    | 1   | SENSOR                  |
| 6                                 | 72625913    | 1   | FLOAT                   |
| 7                                 | 72624807    | 1   | CABLE                   |
| 8                                 | ACP0353920  | 1   | NIPPLE                  |
| 9                                 | 72624808    | 1   | HOSE                    |

IDEAL CLASS 8 COMBINE  
20115400-H-1

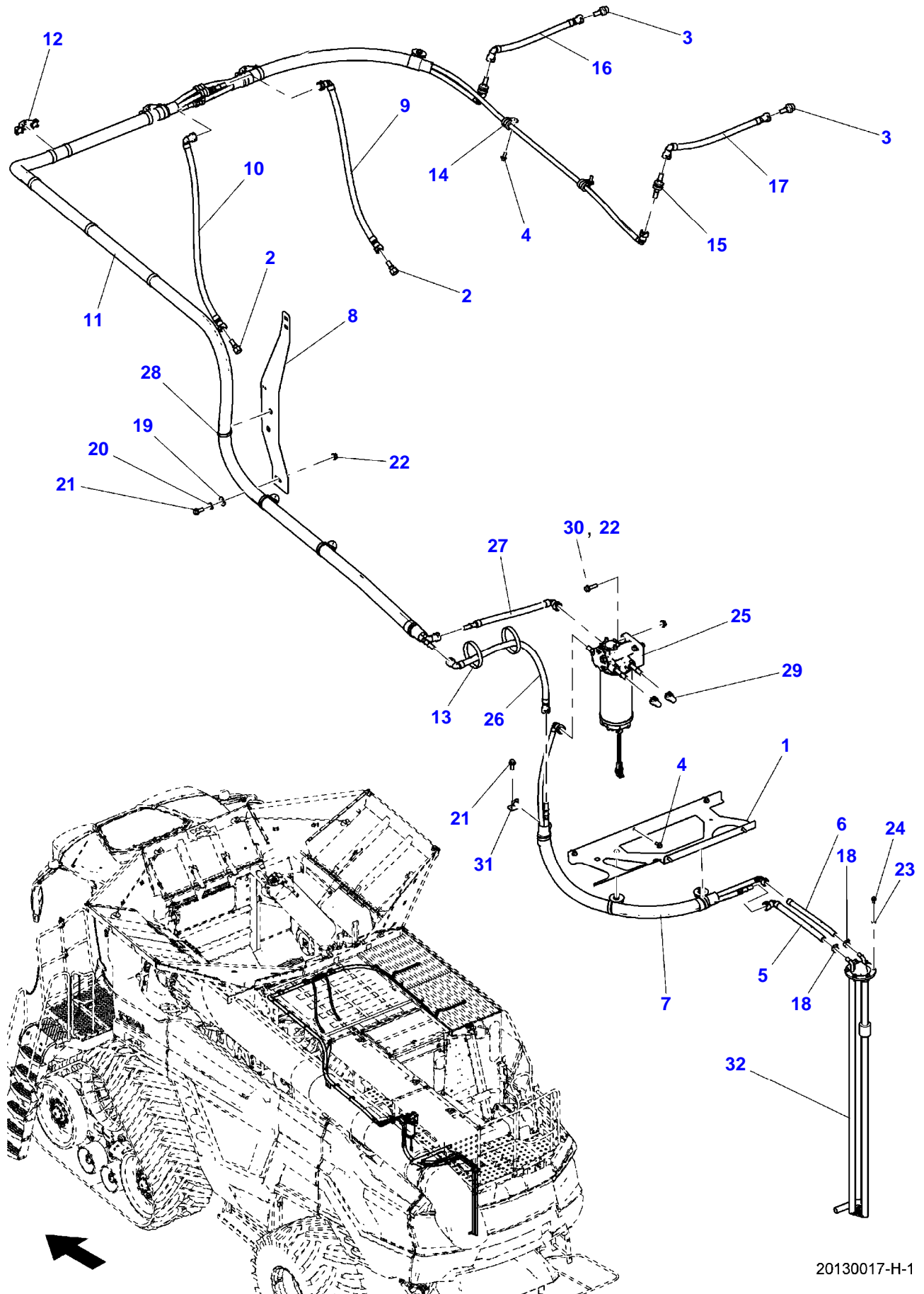


| Item | Part Number | Qty | Description<br>Comments | Technical Specification |
|------|-------------|-----|-------------------------|-------------------------|
|------|-------------|-----|-------------------------|-------------------------|

PAGE 2 OF 2

|    |            |    |                              |                             |
|----|------------|----|------------------------------|-----------------------------|
| 1  | ACW0381750 | 1  | AIR CLEANER ASSEMBLY         |                             |
| 2  | ACW3842570 | 1  | AIR CLEANER MOUNTING BRACKET |                             |
| 3  | ACW2016920 | 1  | INTAKE DUCT                  |                             |
| 4  | ACW0381760 | 1  | PRE-CLEANER                  |                             |
| 5  | ACW2016480 | 10 | BUSHING                      |                             |
| 6  | ACW2016910 | 1  | INTAKE DUCT                  |                             |
| 7  | ACW2016890 | 2  | SUPPORT                      |                             |
| 8  | ACW2016900 | 2  | SUPPORT                      |                             |
| 9  | ACW2023380 | 2  | GASKET                       | 8"                          |
| 10 | ACW2016950 | 1  | GASKET                       |                             |
| 11 | ACW3769950 | 1  | HOSE CLAMP                   |                             |
| 12 | ACW1041210 | 6  | HEXAGON FLANGE BOLT          | ISO4162 M8X1.25X20-8 FLZN1  |
| 13 | ACW1040780 | 8  | HEXAGON FLANGE BOLT          | ISO4162 M10X1.5X25-10 FLZN1 |
| 14 | ACW1628570 | 8  | FLAT WASHER                  | ISO887CL 10-200HV FLZN1     |
| 15 | ACW1628560 | 10 | FLAT WASHER                  | ISO887CL 8-200HV FLZN1      |
| 16 | ACW1066960 | 10 | BELLEVILLE WASHER            | DIN6796 8X18X2 FLZN1        |
| 17 | ACW1023930 | 10 | HEX FLANGE NUT               | EN1661 M8X1.25-10 FLZN1     |

IDEAL CLASS 8 COMBINE  
20130017-H-1



20130017-H-1

| Item | Part Number | Qty | Description<br>Comments | Technical Specification     |
|------|-------------|-----|-------------------------|-----------------------------|
| 1    | ACW4690430  | 1   | LINE SUPPORT            |                             |
| 2    | ACX0033610  | 2   | ADAPTER                 | 1/2" X M1                   |
| 3    | ACX0033440  | 2   | ADAPTER                 | 1/2" X 7/8"                 |
| 4    | ACW1041210  | 7   | HEXAGON FLANGE BOLT     | ISO4162 M8X1.25X20-8 FLZN1  |
| 5    | ACW4354380  | 1   | FUEL HOSE               |                             |
| 6    | ACW4355050  | 1   | RETURN HOSE             |                             |
| 7    | ACW4182070  | 1   | FUEL LINE               |                             |
| 8    | ACW4663990  | 1   | LINE SUPPORT            |                             |
| 9    | ACW4269390  | 1   | FUEL SUPPLY HOSE        |                             |
| 10   | ACW4269380  | 1   | FUEL HOSE               |                             |
| 11   | ACW4173800  | 1   | FUEL LINE               |                             |
| 12   | 402230X1    | 3   | CABLE TIE MOUNT         | 2 T50-T250 CABLE TIES       |
| 13   | 402295X1    | 11  | CABLE TIE               | L = 390 MM                  |
| 14   | ACW1135490  | 5   | CLAMPING PIPE           |                             |
| 15   | ACW2862860  | 2   | BULKHEAD FITTING        |                             |
| 16   | ACW3497200  | 1   | TUBE ASSY               |                             |
| 17   | ACW3496220  | 1   | TUBE ASSY               |                             |
| 18   | AG561227    | 2   | HOSE CLAMP              | 0.44"-0.78",SAE 6,SS        |
| 19   | ACW1628570  | 1   | FLAT WASHER             | ISO887CL 10-200HV FLZN1     |
| 20   | ACW1066970  | 1   | BELLEVILLE WASHER       | DIN6796 10X23X2.5 FLZN1     |
| 21   | ACW1040780  | 4   | HEXAGON FLANGE BOLT     | ISO4162 M10X1.5X25-10 FLZN1 |
| 22   | ACW1023940  | 4   | HEX FLANGE NUT          | ISO4161 M10X1.5-10 FLZN1    |
| 23   | ACW1066950  | 6   | BELLEVILLE WASHER       | DIN2093-A 6X12.5X0.7 FLZN1  |
| 24   | ACW1041150  | 6   | HEXAGON FLANGE BOLT     | ISO4162 M6X1X16-8 FLZN1     |
| 25   | ACW4182090  | 1   | FUEL FILTER             |                             |
| 26   | ACW4182080  | 1   | RETURN HOSE             |                             |
| 27   | ACW4182110  | 1   | FUEL HOSE               |                             |
| 28   | ACW4665110  | 13  | CABLE TIE               |                             |
| 29   | ACW4822730  | 2   | PLUG                    |                             |
| 30   | ACW1040800  | 2   | HEXAGON FLANGE BOLT     | ISO4162 M10X1.5X35-10 FLZN1 |
| 31   | ACW3798010  | 1   | ANGLE                   |                             |
| 32   | ACW2161930  | 1   | FUEL PRESSURE SENSOR    |                             |



**Suggest:**

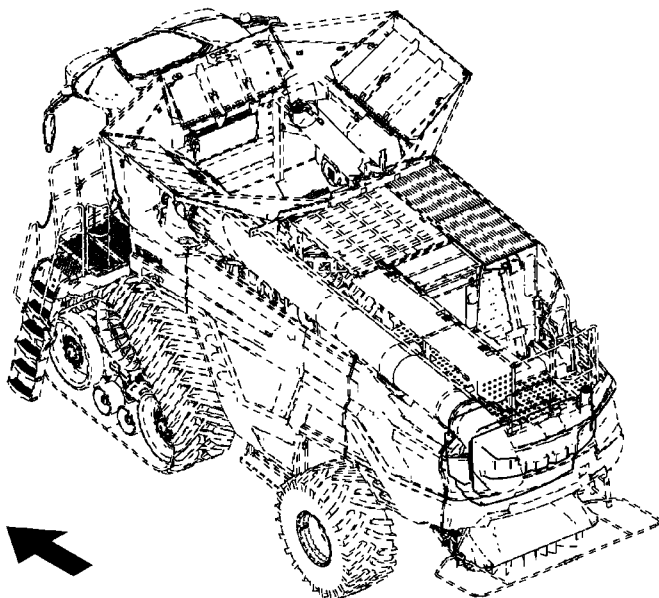
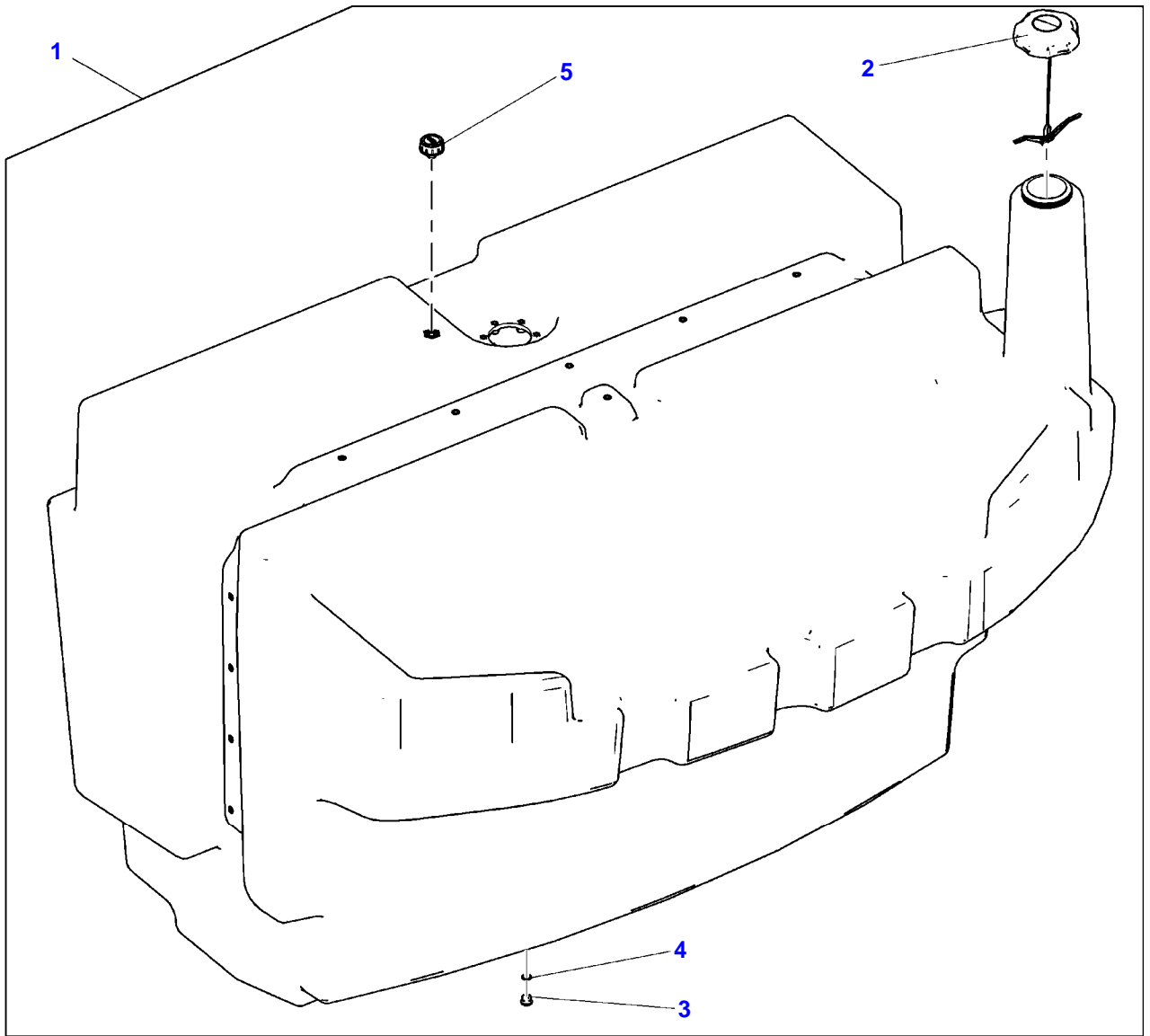
**For more complete manuals. Please go to the home page.**

**<https://www.ebooklibonline.com>**

**If the above button click is invalid. Please download this document first, and then click the above link to download the complete manual.**

**Thank you so much for reading**

IDEAL CLASS 8 COMBINE  
20106190-H-1



| Item | Part Number | Qty | Description<br>Comments | Technical Specification |
|------|-------------|-----|-------------------------|-------------------------|
|      |             |     | 1000L<br>264 GALLONS    |                         |
| 1    | ACW186090B  | 1   | FUEL TANK               | 1000L                   |
| 2    | ACW1868120  | 1   | FUEL CAP                |                         |
| 3    | 71444855    | 1   | PLUG                    | M14 X 1.5               |
| 4    | 71443167    | 1   | O-RING                  | 11.3MM ID X 2.4MM       |
| 5    | ACW1305460  | 1   | BREATHER                |                         |

**<https://www.ebooklibonline.com>**

Hello dear friend!

Thank you very much for reading.

Enter the link into your browser.

The full manual is available for immediate download.

**<https://www.ebooklibonline.com>**