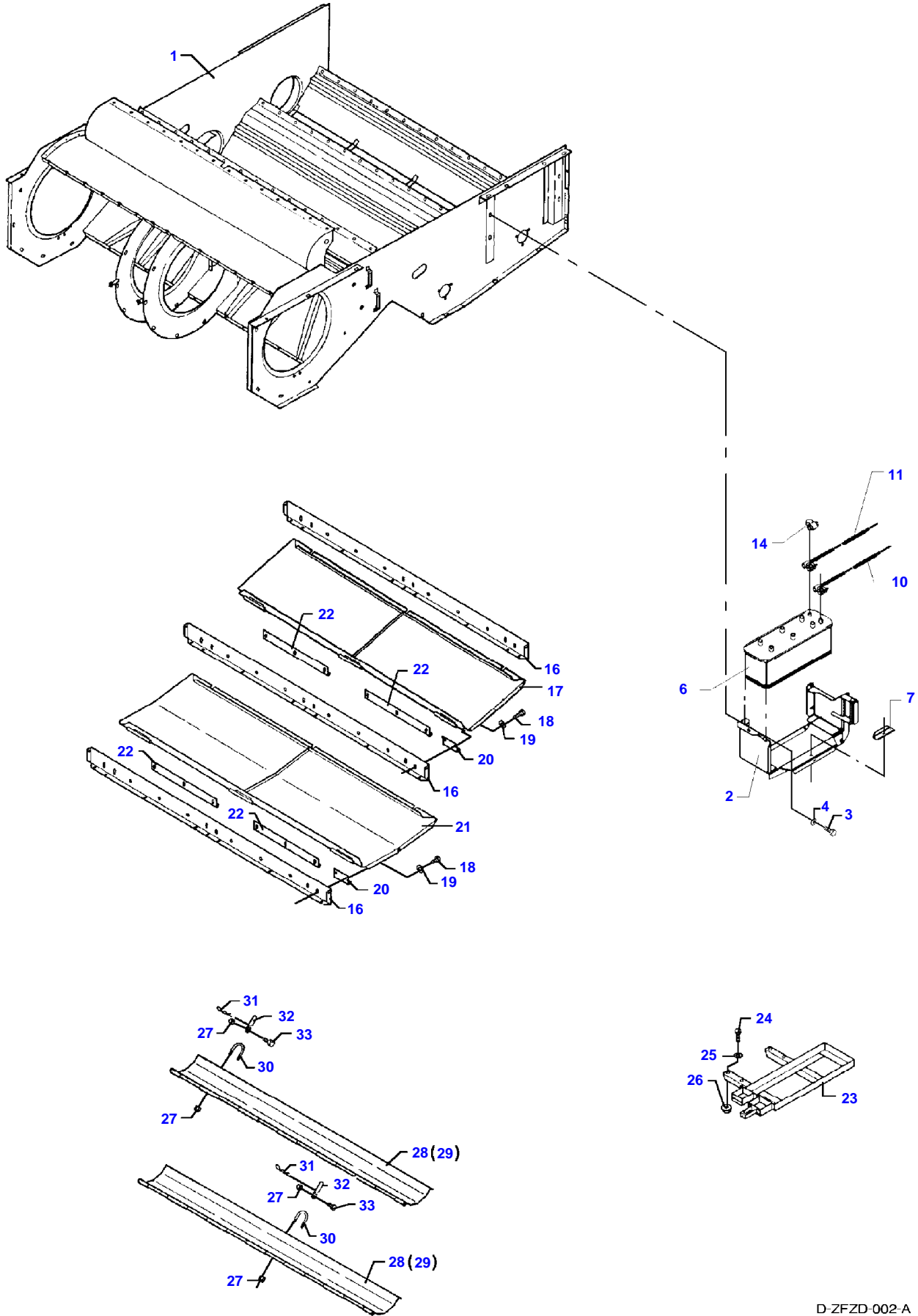


Page Title	Page Number
Knives And Fingers - Freeflow - 14' - 20'	001-0001
Table Auger Right Hand - Freeflow - 14' - 20'	001-0002
Table Auger Left Hand - Freeflow - 14' - 20'	001-0003
Guarding And Transmissions - Freeflow - 14' - 20'	001-0004
Table Housing And Guarding - Freeflow - 14' - 20'	001-0005
Knives And Fingers - Powerflow - 14' - 20'	001-0006
Table Auger Right Hand - Powerflow - 14' - 20'	001-0007
Tabel Auger Left Hand - Powerflow - 14' - 20'	001-0008
Guarding And Transmissions - Powerflow - 14' - 20'	001-0009
Table Housing And Guarding - Powerflow - 14' - 20'	001-0010
Powerflow Band - Left Hand - 14' - 20'	001-0011
Powerflow Band - Right Hand - 14' - 20'	001-0012
Oilseed Rape Auger	001-0013
Straw Dividers	001-0014
Table Trailer - From No 0000500	001-0015
Table Trailer - UP TO NO. 7374033	001-0016
Lightening Bracket - UP TO NO. 7374033	001-0017
Electric Vertical Knife	001-0018
Decals	001-0019

5220 / 5250 COMBINES - 1637410  
D-ZFZD-002-A



## Fan Housing - Doors And Batteries

Item	Part Number	Qty	Description	Comments
1	D28482185	1	Housing	
2	D28485104	1	Support	
3	D40404900	X	Hex. Sock. Screw	
4	D28480704	X	Washer	
6	D44900588	1	Battery	
7	D28480285	1	Retainer	
10	D28781896	1	Cable	See Page - Reference Number 012-0007/22
11	D28781929	1	Cable	See Page - Reference Number 012-0007/20
14	D45060042	X	Plug	
16	D28482083	3	Profile	
17	D28482074	1	Gate	
18	D40405000	X	Hex. Sock. Screw	
19	D20400506	X	Washer	
20	D28480417	1	Hinge	
21	D28482075	X	Gate	
22	D28480478	X	Chock	
23	D28181516	1	Retainer	
24	D40405000	4	Hex. Sock. Screw	
25	D20400506	4	Washer	
26	D41013500	4	Nut	
27	1441462X1	X	Locknut	Replace and repair. Old not interchangeable with new D41087400
28	D28482021	2	Shutter	
29	D28482079	2	Shutter	
30	D28560165	6	U Bolt	
31	D27100120	6	Hair Pin	
32	D28560162	6	Lever	
33	D40402700	X	Hex. Sock. Screw	

**<https://www.ebooklibonline.com>**

Hello dear friend!

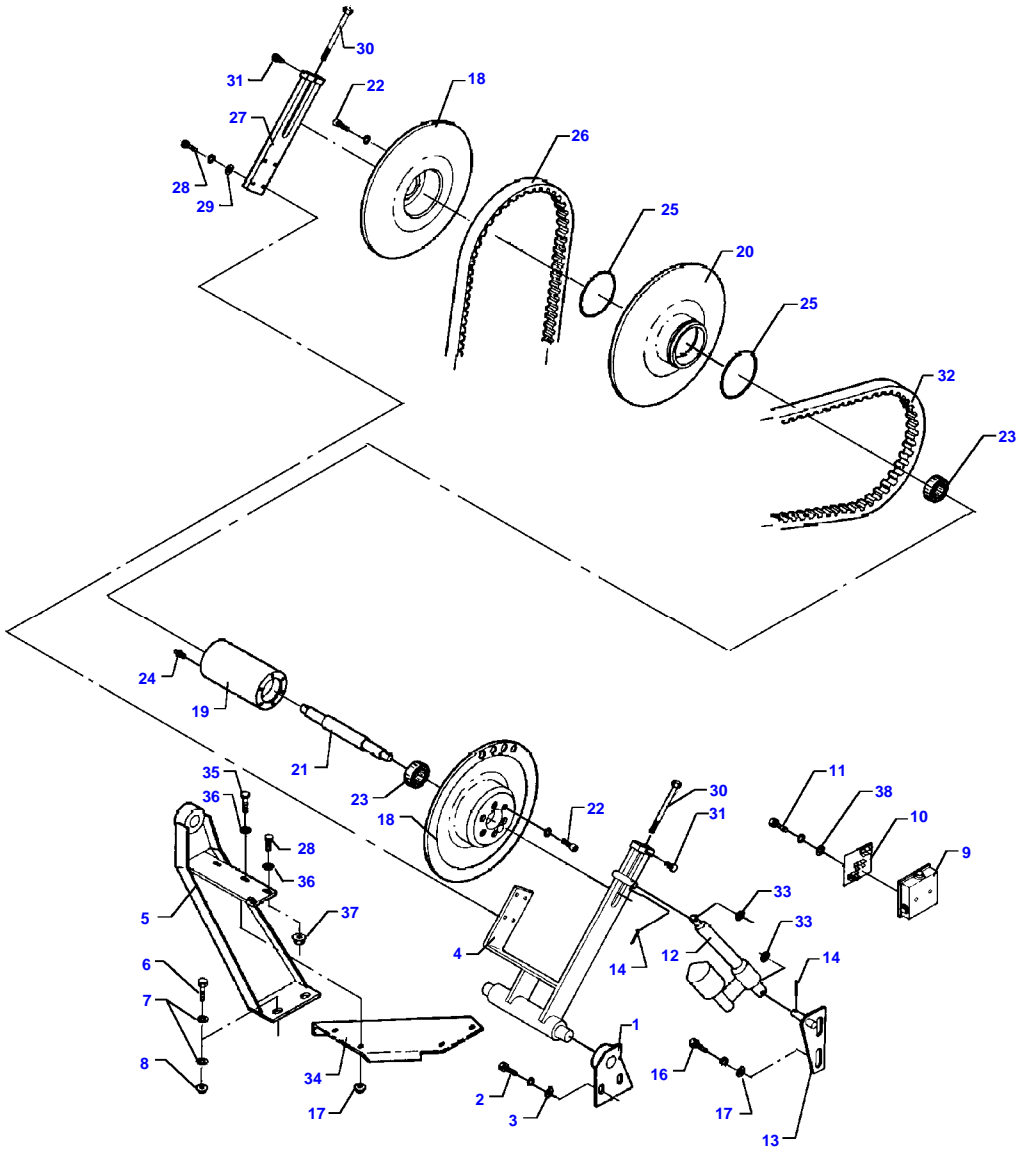
Thank you very much for reading.

Enter the link into your browser.

The full manual is available for immediate download.

**<https://www.ebooklibonline.com>**

5220 / 5250 COMBINES - 1637410  
D-ZFZE-002-B



## Main Fan Variator

Item	Part Number	Qty	Description	Comments
1	D28480203	1	Bracket	
2	D40407700	2	Hex. Sock. Screw	
3	D20400471	2	Washer	
4	D28480739	1	Fork	
5	D28480869	1	Bracket	
6	D40407900	2	Hex. Sock. Screw	
7	D20400416	4	Washer	
8	D41087600	2	Locknut	
9	D28781903	1	Connector	
10	D28780326	1	Plate	
11	D40402400	2	Hex. Sock. Screw	
12	D45080018	1	Ram	
13	D28485350	1	Bracket	
14	D40445900	2	Pin	
15	D28480470	1	Elbow	
16	D40407900	2	Hex. Sock. Screw	
17	D20400416	2	Washer	
18	D28480324	1	Variator	
	D28480140	2	Variator	(18)
19	D28480321	1	Bearing Carrier	(18)
20	D28480144	1	Washer	(18)
21	D28480316	1	Shaft	(18)
22	D40690400	12	Screw	(18)
23	D41628800	2	Bearing Ball	(18)
24	D43001500	1	Greaser	(18)
25	D45476400	2	O Ring	(18)
26	<b>D41981100</b>	1	Belt	
	<b>D41981400</b>	1	V Belt	[A]
27	D28480317	1	Fork	
28	D40405100	6	Hex. Sock. Screw	
29	D20400506	4	Washer	
30	D40409400	2	Screw Metric	
31	D40402200	2	Hex. Sock. Screw	
32	<b>D41981200</b>	1	Belt	See Page - Reference Number 011-0002/90
33	D20400537	2	Spacer	
34	D28480866	1	Bracket	
35	D40405000	6	Hex. Sock. Screw	
36	D20400506	6	Washer	
37	D41013500	6	Nut	
38	D20400453	2	Washer	

FOOTNOTE [A] REDUCED MAIN FAN SPEED



## Counter Drive

Item	Part Number	Qty	Description	Comments
1	D28480387	1	Bracket	
2	D40407800	3	Hex. Sock. Screw	
3	D20400419	4	Washer	
4	D28480357	1	Hub	
5	D28480094	1	Pulley	
6	D40690400	6	Screw	
7	D42513700	1	Circlip	
8	D41622700	2	Bearing Ball	
9	D28250444	1	Bolt	
11	D28260181	1	Bolt	
12	D41087900	1	Locknut	
13	D41010800	2	Nut	
14	D28480796	1	Support	
15	D40407800	2	Hex. Sock. Screw	
16	D20400473	4	Washer	
18	D28480822	1	Pulley	
20	D42513700	1	Circlip	
21	D41622700	2	Bearing Ball	
22	D28250444	1	Bolt	
23	D28880354	1	Spacer	
24	D41087900	1	Locknut	
25	D28480588	1	Bracket	
26	D40407200	4	Hex. Sock. Screw	
28	D28480245	1	Bracket	
29	D40405000	4	Hex. Sock. Screw	
30	D20400414	4	Washer	
31	D41013500	4	Nut	
32	D28384052	1	Pulley	
33	D42513700	2	Circlip	
34	D41622700	2	Bearing Ball	
35	D28384054	1	Spacer	
36	D28380003	1	Ring	
37	D28384053	1	Bolt	
38	D28211025	1	Bolt	
39	D41087900	1	Locknut	
40	D41010800	2	Nut	
41	D28480384	1	Bracket	
42	D40407200	2	Hex. Sock. Screw	
43	D28250441	1	Pulley	
44	D42513700	1	Circlip	
45	D41622700	2	Bearing Ball	
46	D20400416	3	Washer	
47	D28250444	1	Bolt	
48	D28480457	1	Spacer	
49	D28850316	1	Bolt	
50	D41010800	2	Nut	
51	D41087900	1	Locknut	
52	D28480583	1	Washer	
53	D41617800	1	Bearing Ball	
54	D42515400	1	Circlip	
55	D42515100	1	Circlip	
56	D41613500	1	Bearing Ball	
57	<b>D41990001</b>	2	V Belt	
58	<b>D41933700</b>	1	Kit, Belt	See Page - Reference Number 006-0007/37
59	D28480876	1	Pulley	[A]
	D28480094	1	Pulley	
60	<b>D41979000</b>	1	Belt	See Page - Reference Number 005-0001/46
61	D40690400	6	Screw	
62	D28480091	1	Bush	
63	D28380018	1	Bracket	
64	D28750882	1	Washer	
65	D40416500	1	Screw Metric	
66	D28380178	1	Dog	
67	D28380020	1	Yoke	
68	D40411000	5	Hex. Sock. Screw	
71	D40408000	2	Hex. Sock. Screw	

Fendt

5220 / 5250 COMBINES - 1637410

1637410

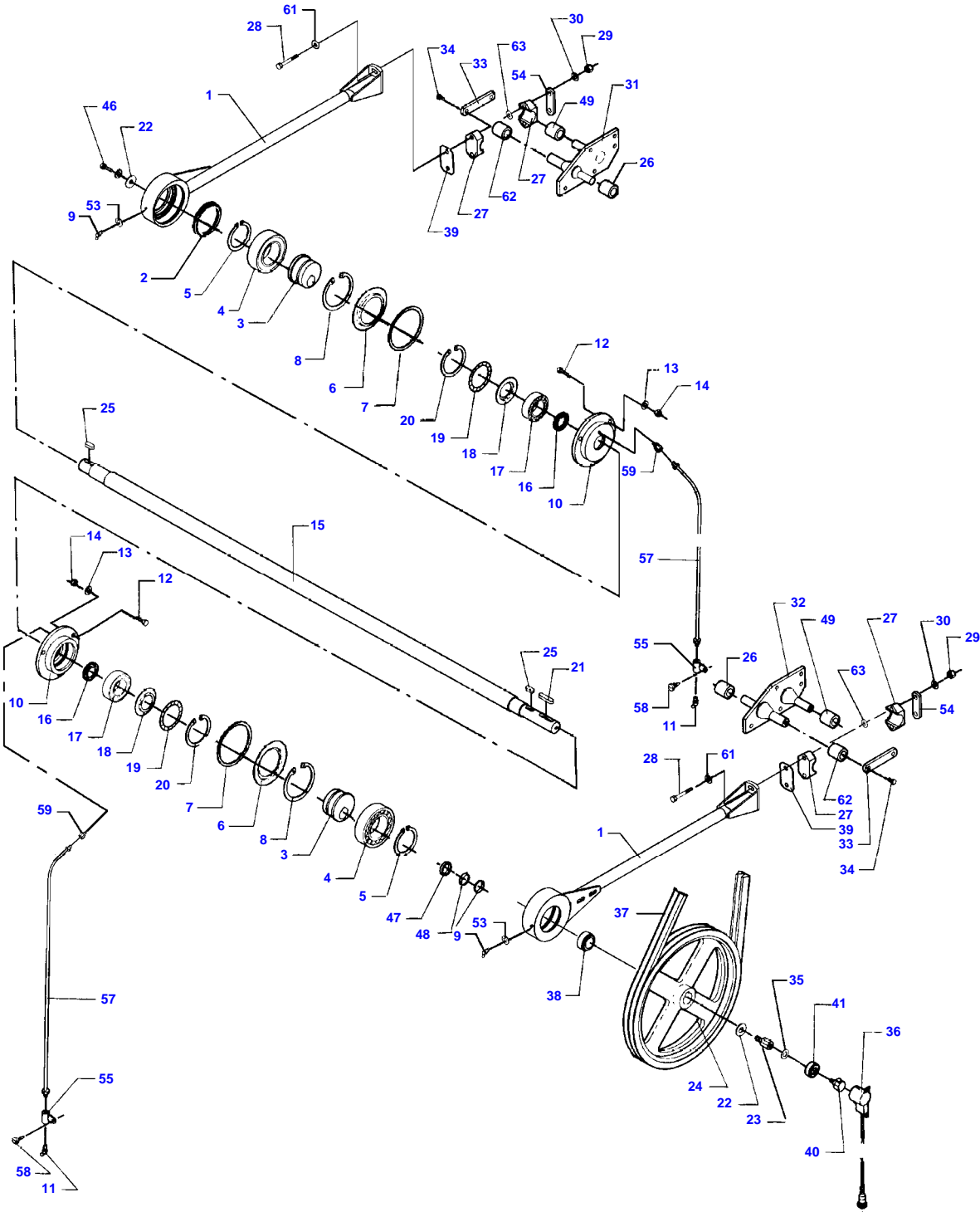
Counter Drive

Page006-0006

Item	Part Number	Qty	Description	Comments
72	D41092500	3	Nut	
73	D20400459	1	Washer	
74	D20400415	2	Washer	
75	D42513700	1	Circlip	

FOOTNOTE [A] REDUCED CHOP SPEED

5220 / 5250 COMBINES - 1637410  
D-ZFZG-002-B

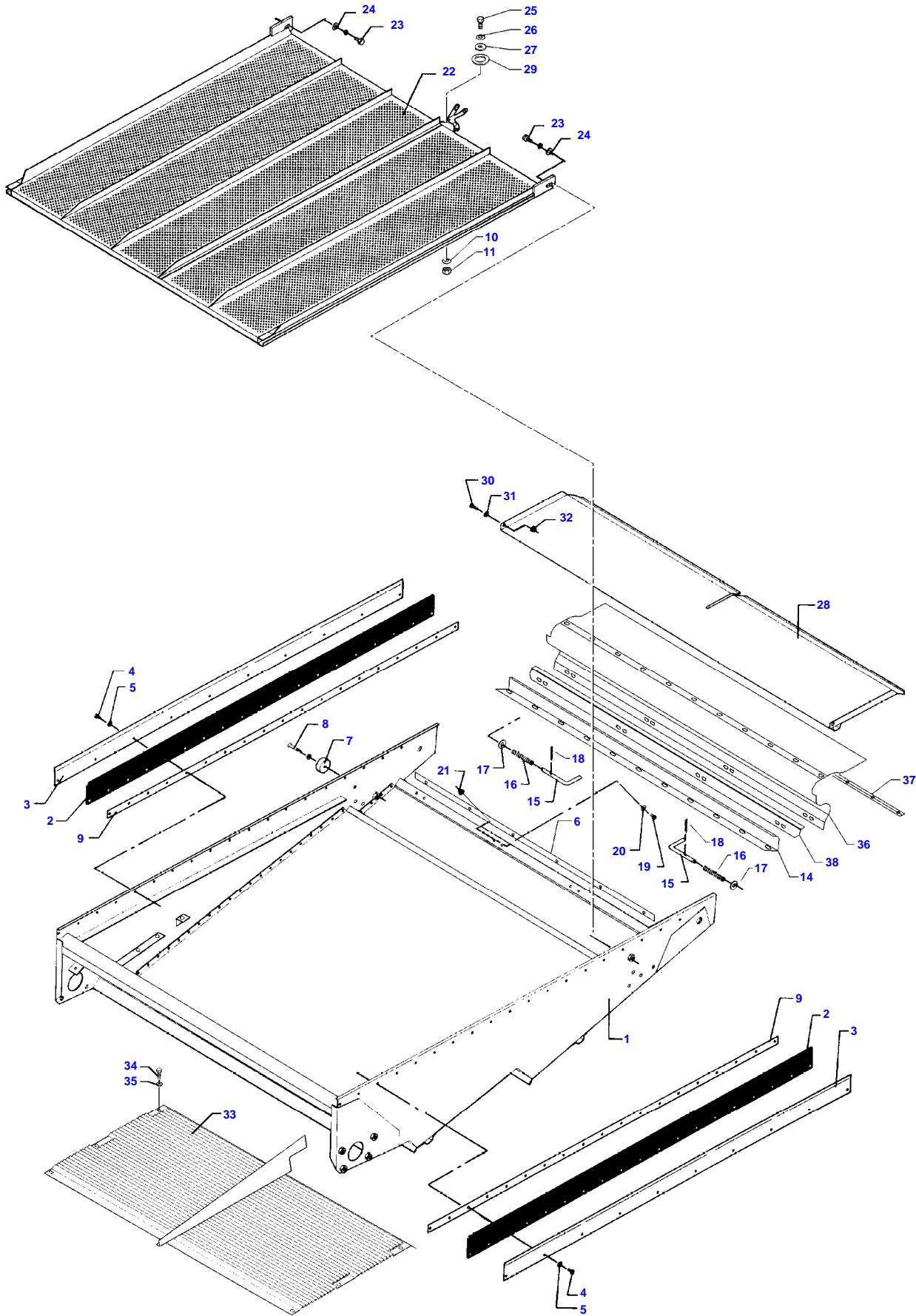


## Eccentric Drive

Item	Part Number	Qty	Description	Comments
1	D28480489	2	Connecting Link	
2	D45417000	2	Gasket	
3	D28480265	2	Eccentric	
4	D41616000	2	Bearing Ball	
5	D42505800	2	Circlip	
6	D45426100	2	Seal	
7	D28480267	2	Ring	
8	D42516900	2	Circlip	
9	D43001500	2	Greaser	
10	D28480258	2	Bearing Carrier	
11	D43001500	2	Greaser	
12	D40407800	6	Hex. Sock. Screw	
13	D20400471	6	Washer	
14	D41087600	6	Locknut	
15	D28482006	1	Shaft	
16	D45478900	2	Ring	
17	D41629200	2	Bearing Ball	
18	D45427500	2	Seal	
19	D41679500	2	Spacer	
20	D42515900	2	Circlip	
21	D43105000	1	Key	
22	D25400068	2	Washer	
23	D28780419	1	Threaded Part	
24	D28480460	1	Pulley	
25	D43104600	2	Key	
26	D28480268	2	Bush	
27	D28480526	4	Fitting	
28	D40439600	4	Hex. Sock. Screw	
29	D41092500	4	Nut	
30	D20400419	4	Washer	
31	D28480871	1	Suspension	
32	D28480870	1	Suspension	
33	D28480129	2	Link	
34	D40407700	4	Hex. Sock. Screw	
35	D20400419	1	Washer	
36	<b>D28780514</b>	1	Sensor	
37	<b>D41933700</b>	1	Kit, Belt	See Page - Reference Number 006-0006/58
38	D28480264	1	Bush	
39	D28480430	X	Chock	[A] OPTIONAL
40	<b>D28780516</b>	1	Inductive Taker	
41	D41622600	1	Bearing Ball	
46	D40407700	1	Hex. Sock. Screw	
47	D28480467	1	Ring	
48	D42596500	1	Tightener	
49	D46481400	2	Bush	
53	D20400452	2	Washer	
54	D28480571	2	Dog	
55	D43009200	2	Bracket	
57	D28780831	2	Tube	
58	D40402600	2	Hex. Sock. Screw	
59	D43009500	2	Connector	
61	D41112500	4	Washer	
62	D46481400	2	Bush	
63	D20400507	2	Spacer	

FOOTNOTE [A] QUANTITY AS REQUIRED

5220 / 5250 COMBINES - 1637410  
D-ZFZH-002-B

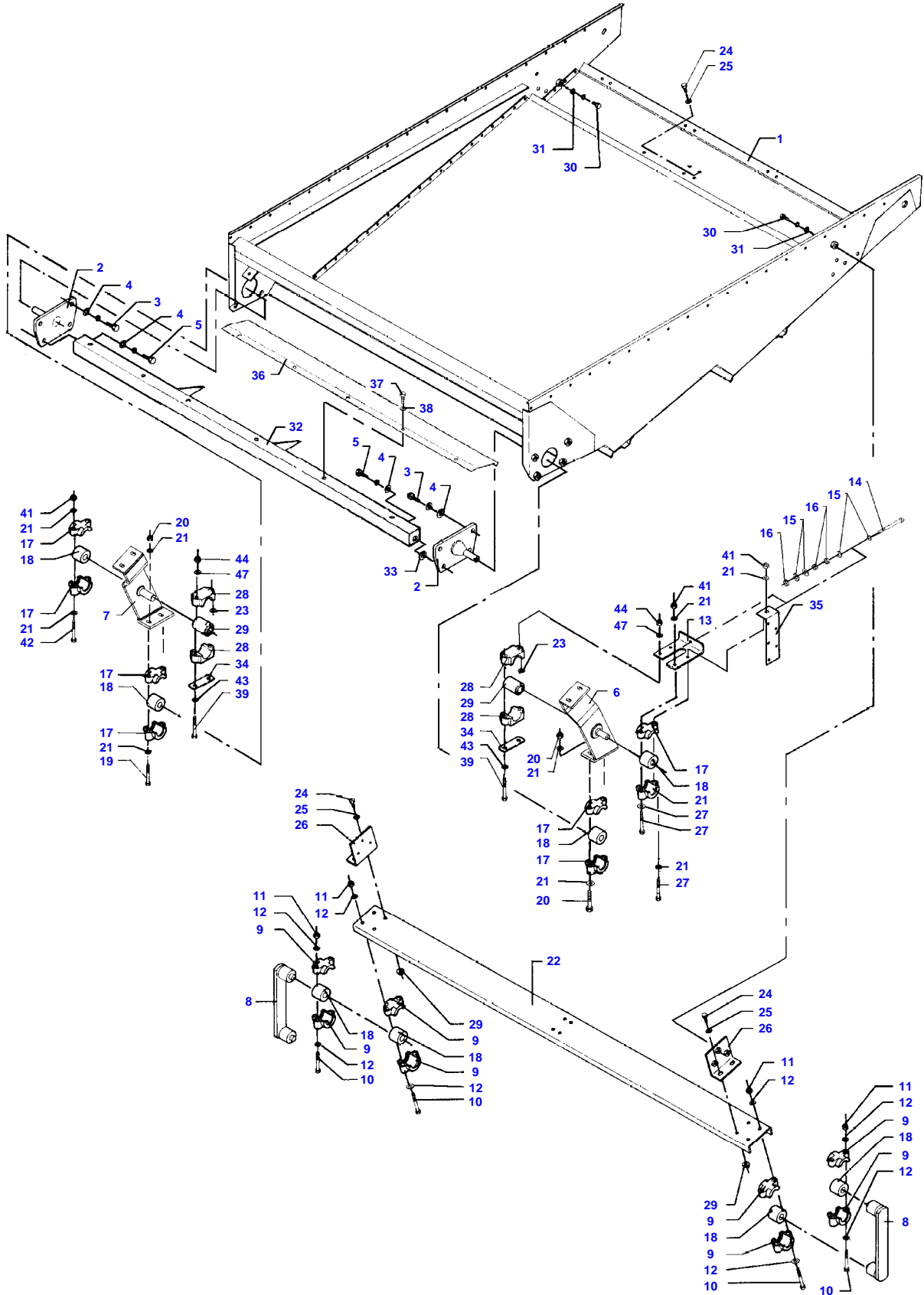


## Lower Shaker Shoe And Sieves

Item	Part Number	Qty	Description	Comments
1	D28485256	1	Boot	
	D28482101	1	Shaker Shoe	(1)
2	D28480541	2	Gasket	(1)
3	D28480540	2	Plate	(1)
4	D40402600	X	Hex. Sock. Screw	(1)
5	D20400470	X	Washer	(1)
6	D28482351	1	Rail	
7	D28480097	2	Washer	(1)
8	D40601600	2	Screw Metric	(1)
9	D28480496	2	Shim	(1)
10	D41112600	X	Cup Spring	
11	D41087500	X	Locknut	
14	D28485253	1	Locking	(1)
15	D28485364	2	Lever	(1)
16	D27200158	2	Spring	(1)
17	D20400426	2	Washer	(1)
18	D41405900	2	Pin	(1)
19	D40402400	8	Hex. Sock. Screw	(1)
20	D20400470	8	Washer	(1)
21	D41013400	8	Nut	(1)
22	D28482053	1	Sieve	
	D28482080	1	Sieve	[A]
	D28482081	1	Sieve	[A]
23	D40410800	2	Screw Metric	
24	D20400426	4	Washer	
25	D40063700	X	Screw Metric	
26	D41112900	X	Cup Spring	
27	D28482231	2	Washer	
28	D28482093	1	Plate	[A]
29	D45715900	2	Friction Disc	
30	D40404900	2	Hex. Sock. Screw	[A]
31	D20400500	2	Spacer	[A]
32	D41013500	2	Nut	[A]
33	D28482131	1	Plate	
34	D40404900	6	Hex. Sock. Screw	
35	D20400506	6	Washer	
36	D28485450	1	Seal	
37	D28482030	2	Rail	
38	D28485255	1	Rail	

FOOTNOTE [A] OPTIONAL EQUIPMENT

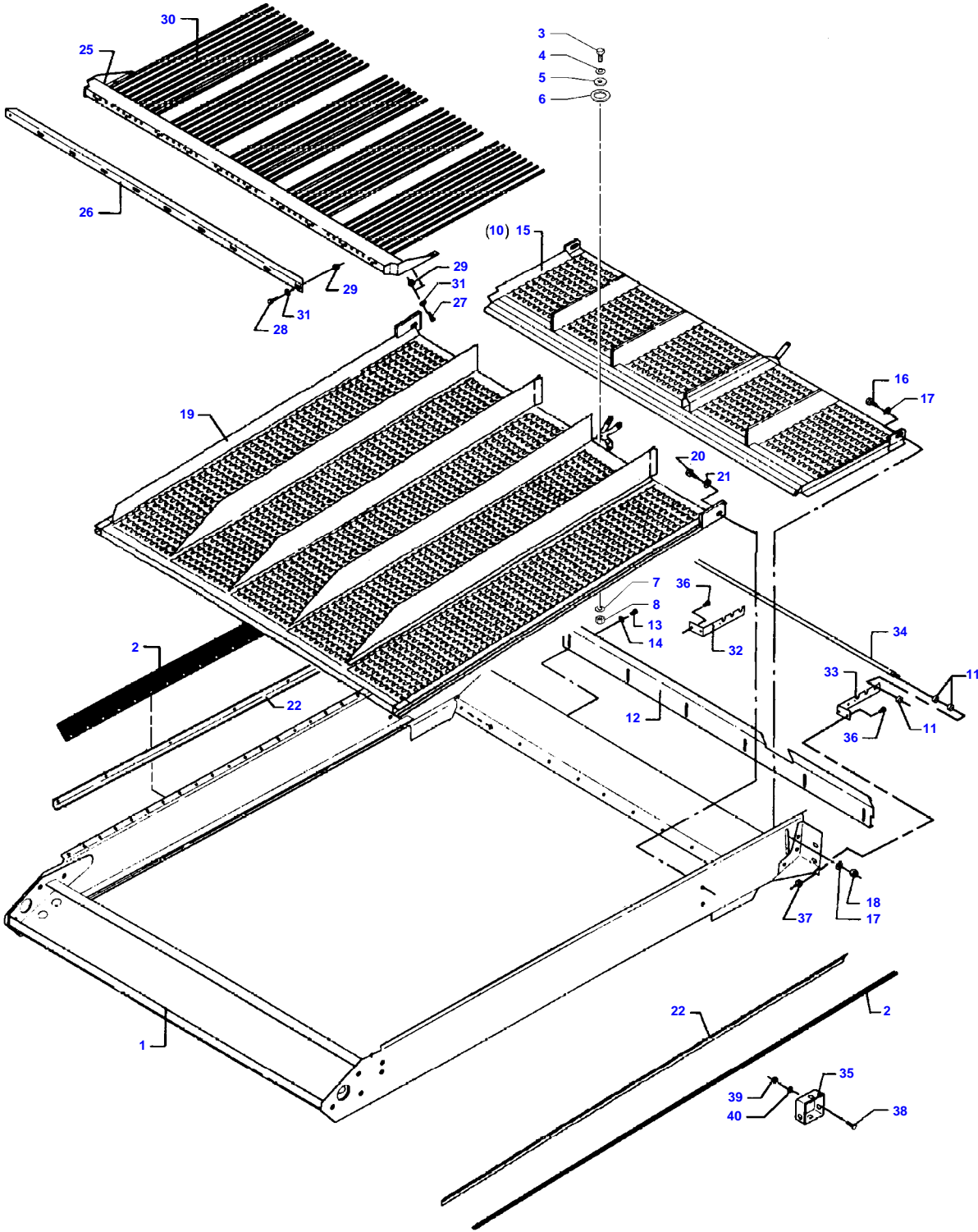
5220 / 5250 COMBINES - 1637410  
D-ZFZI-002-B



## Lower Shaker Shoe And Suspension

Item	Part Number	Qty	Description	Comments
1	D28482101	1	Shaker Shoe	
2	D28480505	2	Support	CPL
	D28480081	2	Bracket	(2)
3	D40410900	6	Hex. Sock. Screw	
4	D20400537	8	Spacer	
5	D40411100	2	Hex. Sock. Screw	
6	D28480858	1	Arm	Left Hand
	D28480856	1	Arm	Left Hand
7	D28480859	1	Arm	Right Hand
	D28480857	1	Arm	Right Hand
8	D28480069	2	Arm	
9	D28430010	8	Half Flange	
10	D40426500	8	Screw	
11	D41087600	8	Locknut	
12	D20400419	16	Washer	
13	D28480130	1	Plate	
14	D40408800	1	Hex. Sock. Screw	
15	D20400419	4	Washer	
16	D41010800	3	Nut	
17	D28430010	12	Half Flange	
18	D28450420	6	Bush	(8)
	D28450420	6	Bush	(18)
19	D40426600	8	Hex. Sock. Screw	
20	D41087600	12	Locknut	
21	D20400419	X	Washer	
22	D28482059	1	Profile	
23	D28480862	2	Shim	
24	D40407700	8	Hex. Sock. Screw	
25	D20400419	8	Washer	
26	D28480114	1	Angle	
27	D40439600	X	Hex. Sock. Screw	
28	D28480854	4	Bearing Carrier	
29	D46481300	2	Bush	
30	D40407600	6	Hex. Sock. Screw	
31	D20400419	6	Washer	
32	D28482149	1	Stay	
33	D20400513	X	Spacer	OPTIONAL
34	D28480860	2	Clamp	
35	D28780367	1	Retainer	
36	D28482130	1	Plate	
37	D40404900	5	Hex. Sock. Screw	
38	D20400506	5	Washer	
39	D40429400	4	Screw Metric	
41	D41087700	X	Locknut	
42	D40438900	2	Screw	
43	D20400426	8	Washer	
44	D41087700	4	Locknut	

5220 / 5250 COMBINES - 1637410  
D-ZFAZ-002-B



D-ZFAZ-002-B

## Upper Shaker Shoe And Sieves

Item	Part Number	Qty	Description	Comments
1	D28485257	1	Shaker Shoe	Cpl.
	D28482102	1	Shaker Shoe	(1)
2	D28480546	2	Gasket	(1)
3	D40063700	X	Screw Metric	
4	D41112900	X	Cup Spring	
5	D28482231	1	Washer	
6	D45715900	1	Friction Disc	
7	D41112600	X	Cup Spring	
8	D41087500	X	Locknut	
9	D40404900	14	Hex. Sock. Screw	
10	D28482150	1	Control	[D,F]
11	D41012000	6	Nut Metric	[A]
12	D28482367	1	Plate	Valid from machine/table no,can be used in new as well as in older machines 57346
13	D40402600	7	Hex. Sock. Screw	
14	D20400470	7	Washer	
15	D28482076	1	Sieve	[B,E]
	D28482052	1	Sieve	[C]
16	D40410800	3	Screw Metric	
17	D20400426	6	Washer	
18	D41087700	3	Locknut	
19	D28482054	1	Sieve	
	D28482077	1	Sieve	
	D28482099	1	Sieve	
20	D40410800	2	Screw Metric	
21	D20400426	4	Washer	
22	D28480545	2	Rail	
25	D28482087	1	Extension	[B]
26	D28482086	1	Profile	[B]
27	D40404700	6	Hex. Sock. Screw	[B]
28	D40405000	10	Hex. Sock. Screw	[B]
29	D41013500	16	Nut	[B]
30	D28181540	42	Spring	[B]
31	D20400506	X	Washer	
32	D28780774	1	Support	[A] Right Hand
33	D28780773	1	Support	[A] Right Hand
34	D44900625	1	Sensor	[A]
35	D28781903	1	Connector	
36	D40402600	4	Hex. Sock. Screw	
37	D41010600	4	Nut	
38	D40317500	2	Screw Metric	
39	D41010500	2	Nut	
40	D20400401	2	Washer	

FOOTNOTE [A] OPTIONAL EQUIPMENT GRAIN LOSS INDICATOR

FOOTNOTE [B] OPTIONAL EQUIPMENT, RAKE EXTENSION

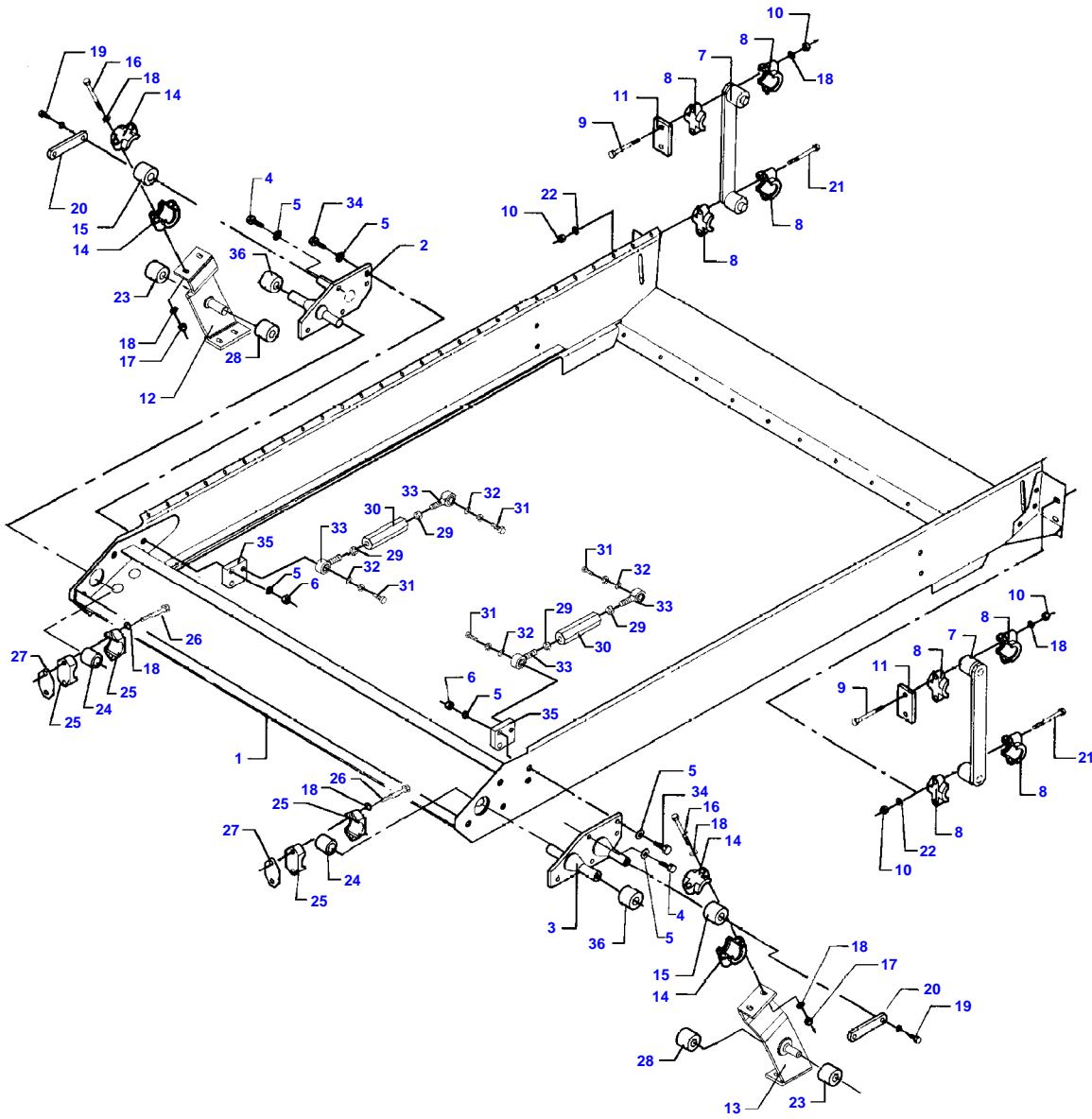
FOOTNOTE [C] STANDARD COMBINE

FOOTNOTE [D] OPTIONAL EQUIPMENT STANDARD COMBINE, STANDARD EQUIPMENT AUTO LEVEL COMBINE,SLOPES

FOOTNOTE [E] CORN

FOOTNOTE [F] SIEVE EXTENSION FOR SLOPES

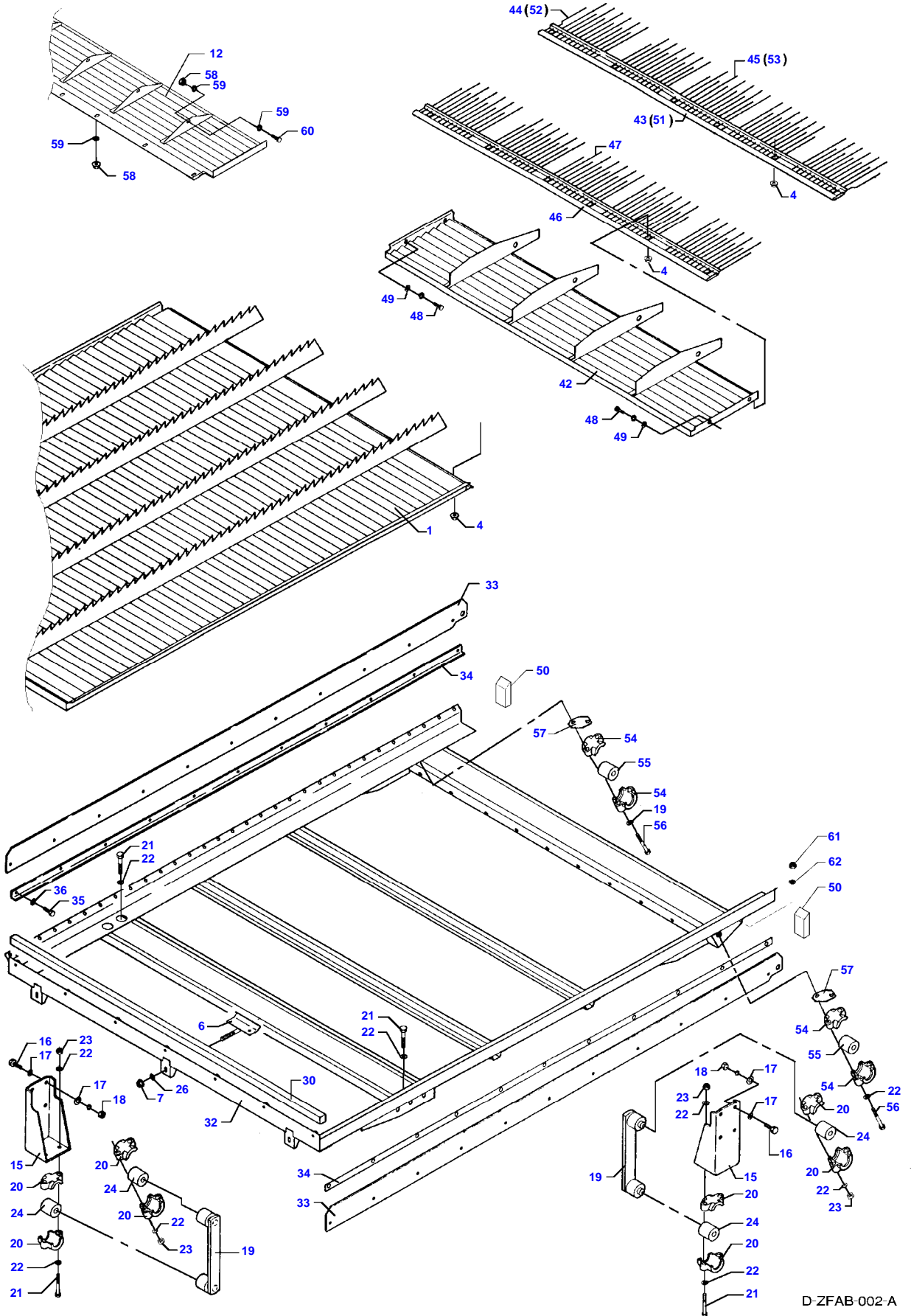
5220 / 5250 COMBINES - 1637410  
D-ZFAA-002-A



## Upper Shaker Shoe And Suspension

Item	Part Number	Qty	Description	Comments
1	D28485257	1	Shaker Shoe	
	D28482102	1	Shaker Shoe	
2	D28480888	1	Support	Right Hand
3	D28480887	1	Support	Left Hand
4	D40411000	6	Hex. Sock. Screw	
5	D20400537	20	Spacer	
6	D41087700	10	Locknut	
7	D28480087	2	Arm	
8	D28430010	8	Half Flange	
9	D40426800	4	Screw	
10	D41087600	8	Locknut	
11	D28480235	2	Shim	
12	D28480859	1	Arm	Right Hand
	D28480857	1	Arm	Right Hand
13	D28480858	1	Arm	Left Hand
	D28480856	1	Arm	Left Hand
14	D28430010	4	Half Flange	
15	D28450420	2	Bush	
16	D40426600	4	Hex. Sock. Screw	
17	D20400426	6	Washer	
18	D20400419	X	Washer	
19	D40407700	4	Hex. Sock. Screw	
20	D28480129	2	Link	
21	D40426500	4	Screw	
22	D20400416	4	Washer	
23	D28450420	4	Bush	
24	D28480268	4	Bush	
25	D28480270	4	Half Flange	
26	D40426500	4	Screw	
27	D28480105	2	Plate	
28	D28480874	2	Bush	
	D46481300	2	Bush	
29	D41010900	4	Nut	
30	D28480693	2	Screw	
31	D40411000	4	Hex. Sock. Screw	
32	D20400424	4	Washer	
33	D45698800	4	Toggle	
34	D40411400	4	Screw Metric	
35	D28480694	2	Support	
36	D46481400	2	Bush	

5220 / 5250 COMBINES - 1637410  
D-ZFAB-002-A



D-ZFAB-002-A

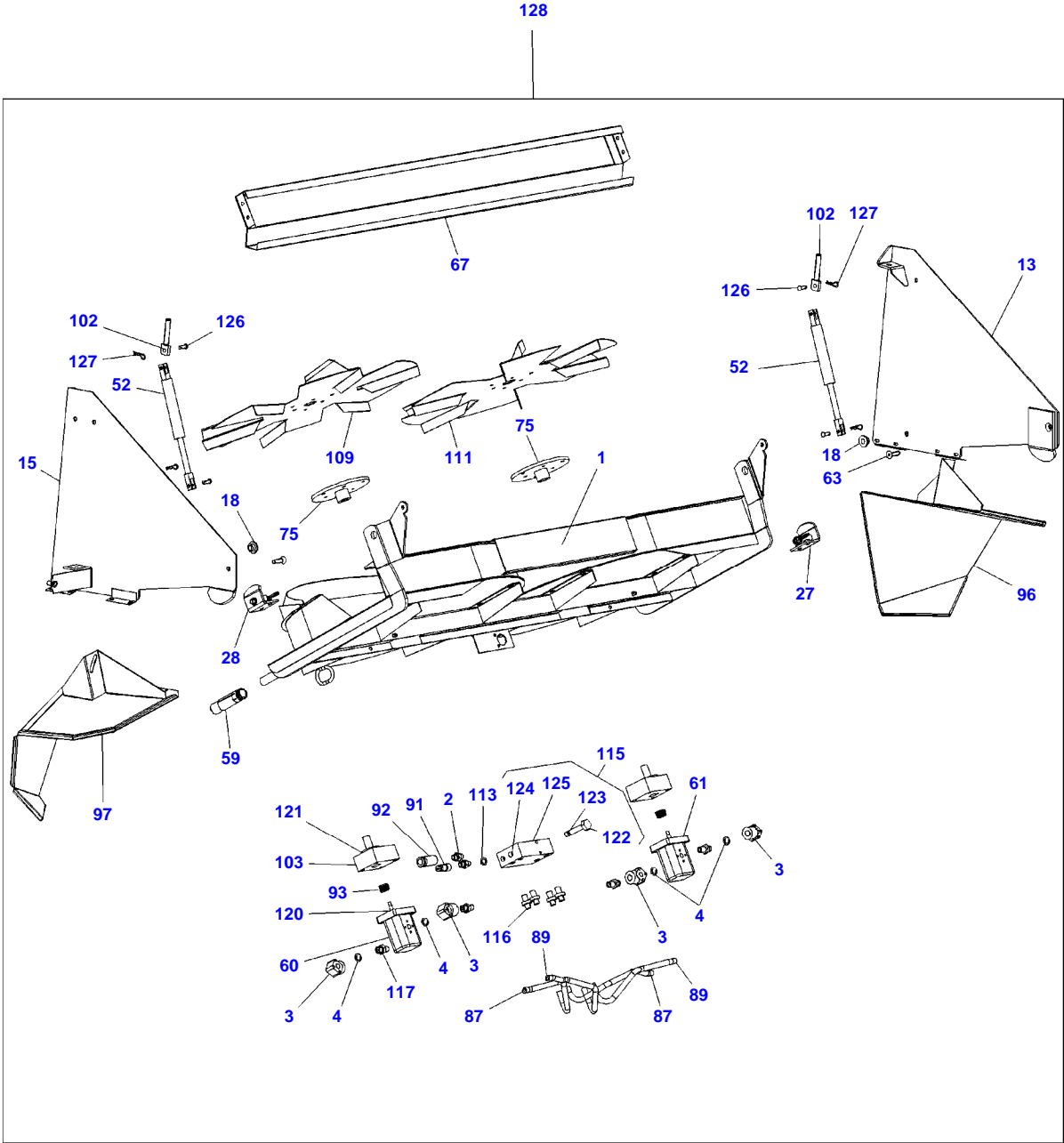
## Conveyor Pan And Suspension

Item	Part Number	Qty	Description	Comments
1	D28482298	1	Pan	
4	D41013500	12	Nut	
6	D28480012	3	Hook	
7	D41087600	3	Locknut	
12	D28482198	1	Extension	[B]
15	D28480070	2	Bracket	
16	D40410900	8	Hex. Sock. Screw	
17	D20400426	16	Washer	
18	D41010900	8	Nut	
19	D28480069	2	Arm	
20	D28430010	8	Half Flange	
21	D40426600	4	Hex. Sock. Screw	
22	D41112500	X	Washer	
23	D41087600	X	Locknut	
24	D28450420	4	Bush	(19)
26	D20400419	9	Washer	
30	D44740400	X	Gasket	2 M
32	D28482299	1	Frame	
33	D28480529	2	Gasket	
34	D28480528	2	Rail	
35	D40404900	22	Hex. Sock. Screw	
36	D20400506	22	Washer	
42	D28482126	1	Conveyor	
43	D28482122	1	Grate	
44	D28482119	2	Pin	
45	D28450458	28	Pin	
46	D28482201	1	Grate	
47	D28450458	32	Pin	
48	D40404700	4	Hex. Sock. Screw	
49	D20400506	4	Washer	
50	D28480929	X	Seal	
51	D28084227	1	Extension	[A]
52	D28480735	2	Pin	[A]
53	D28480734	30	Pin	[A]
54	D28480270	4	Half Flange	
55	D28480268	2	Bush	
56	D40426500	2	Screw	Up to Serial or Engine Number 57228
	D40438900	4	Screw	From Serial or Engine Number 57229
57	D28480105	2	Plate	
58	D41013500	10	Nut	[B]
59	D20400411	14	Washer	[B]
60	D40404700	4	Hex. Sock. Screw	[B]
61	D41092500	4	Nut	From Serial or Engine Number 57229
62	D20400473	4	Washer	From Serial or Engine Number 57229

FOOTNOTE [A] MAIZE EQUIPMENT

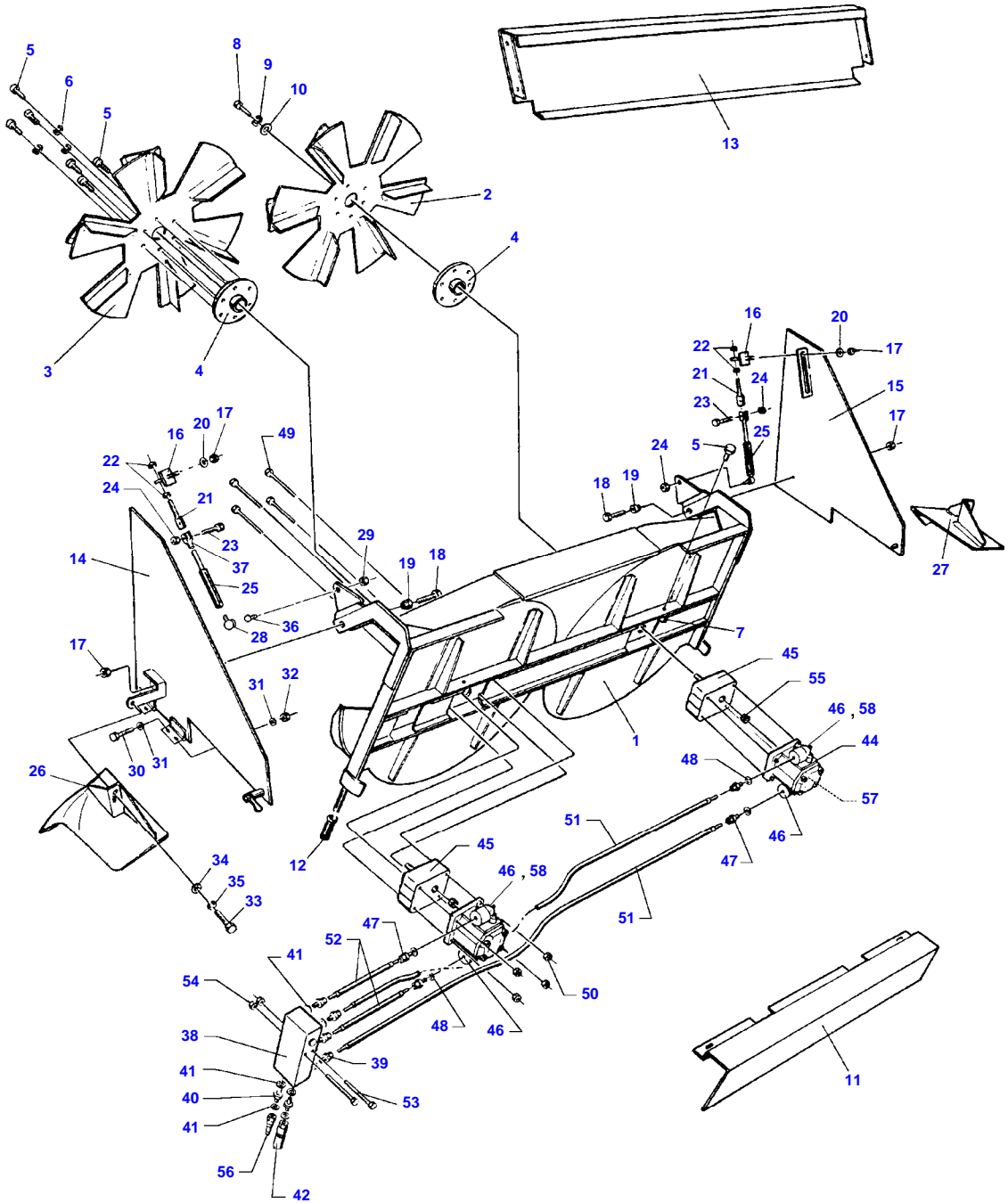
FOOTNOTE [B] OPTIONAL EQUIPMENT

5220 / 5250 COMBINES - 1637410  
D-ZFAC-005-C



Item	Part Number	Qty	Description	Comments
1	D49080124	1	Spreader	Length 1400mm
	D49080125	1	Spreader	Length 1680mm
2	D49080119	2	Adaptor	
3	D49070026	4	Flange	
4	D45483200	4	O Ring	
13	D49080120	1	Plate	
15	D49080121	1	Plate	
18	D49080079	2	Spacer	
27	D49080122	1	Angle	
28	D49080123	1	Angle	
52	D49080126	2	Gas Strut	
59	D49060088	1	Lever	
60	D49070059	1	Hydraulic Motor	
61	D49070060	1	Hydraulic Motor	
63	D40603300	2	Screw Metric	
67	D49070047	1	Cover	Length 1400mm
	D49070048	1	Cover	Length 1680mm
75	D49070008	2	Hub	
87	D49080127	2	Pipe	Length 1400mm
	D49080128	2	Pipe	Length 1680mm
89	D49080129	2	Pipe	Length 1400mm
	D49080130	2	Pipe	Length 1680mm
91	<b>D49080131</b>	1	Belt	
92	<b>D49080132</b>	1	Belt	
93	D49070064	2	Nut	
96	D49070054	1	Plate	
97	D49070053	1	Plate	
102	D49080047	2	Tensioner	
103	D49070025	2	Bearing	
109	D49070037	1	Rotor	Length 1400mm
	D49070044	1	Rotor	Length 1680mm
111	D49070038	1	Rotor	Length 1400mm
	D49070043	1	Rotor	Length 1680mm
113	D49070022	2	Seal	
115	D49070056	1	Pressure Valve	
116	D49080133	4	Union	
117	D49080134	4	Union	
120	D49070065	2	Kit, Seal	
121	D49080138	2	Kit, Seal	
122	D49070068	1	Divider	
123	D49070020	1	Kit, Gasket	
124	D49070069	1	Non Return Valve	
125	D49080135	1	Cover	
126	D49080137	4	Screw	
127	D44358000	4	Hair Pin	
128	D49080107	1	Spreader	CPL - 1680MM
	D49080106	1	Spreader	CPL - 1400MM

5220 / 5250 COMBINES - 1637410  
D-ZFAC-002-B

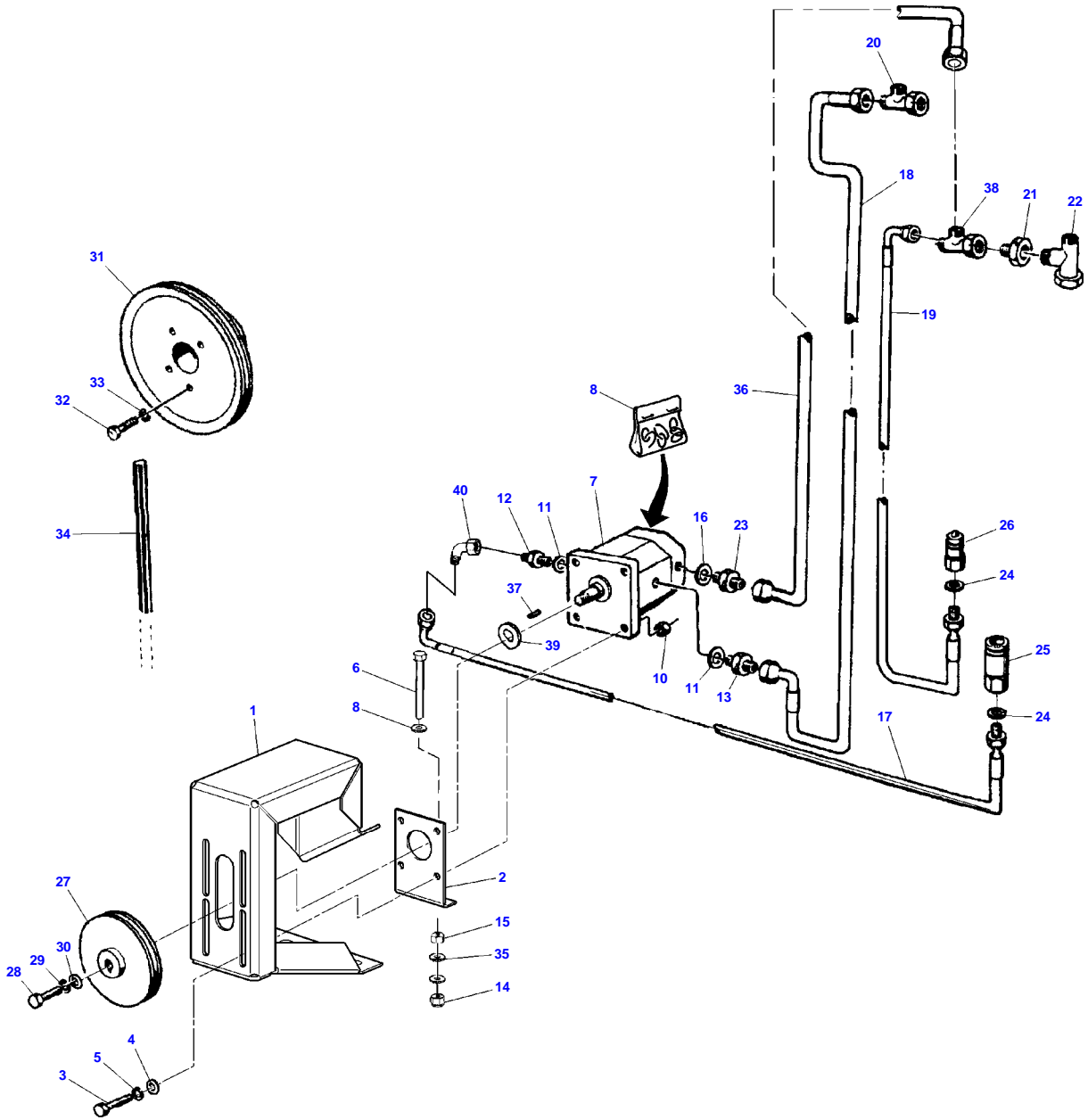


Item	Part Number	Qty	Description	Comments
1	D28085891	1	Spreader	Cpl.
	D49070041	1	Housing	
2	D49070038	1	Rotor	Left Hand
3	D49070037	1	Rotor	Right Hand
4	D49070008	2	Hub	
5	D40404700	14	Hex. Sock. Screw	
6	D41100700	12	Spring Washers	
7	D41087500	2	Locknut	
8	D40402600	2	Hex. Sock. Screw	
9	D41100600	2	Spring Washers	
10	D20400470	2	Washer	
11	D49070045	1	Guard	
12	D49060088	1	Lever	
13	D49070047	1	Cover	
14	D49070049	1	Plate	Left Hand
15	D49070050	1	Plate	Right Hand
16	D49070051	2	Support	Right Hand
17	D41087700	4	Locknut	
18	D40411100	2	Hex. Sock. Screw	
19	D49080079	2	Spacer	
20	D20400426	2	Washer	
21	D49080047	2	Tensioner	
22	D41010900	4	Nut	
23	D40405000	2	Hex. Sock. Screw	
24	D41087500	4	Locknut	
25	D49070102	1	Ram	
26	D49070053	1	Plate	Left Hand
27	D49070054	1	Plate	Right Hand
28	D49070104	1	Yoke	
29	D41087600	20	Locknut	
30	D40400700	8	Hex. Sock. Screw	
31	D20400402	16	Washer	
32	D41087300	8	Locknut	
33	D40407600	2	Hex. Sock. Screw	
34	D20400419	2	Washer	
35	D41100800	2	Spring Washers	
36	D49080102	1	Pivot	
37	D49070103	1	Yoke	
38	D49070056	1	Pressure Valve	
39	D45252800	4	Union	
40	D49070031	2	Connector	
41	D49070022	8	Seal	
42	D49070057	1	Coupling	
43	D49070059	1	Hydraulic Motor	Left Hand
44	D49070060	1	Hydraulic Motor	Right Hand
45	D49070025	2	Bearing	
46	D49070026	4	Flange	
47	D45252600	4	Union	
48	D49070027	4	Seal	
49	D40422700	8	Hex. Sock. Screw	
50	1441462X1	8	Locknut	Replace and repair. Old not interchangeable with new D41087400
51	D49070061	2	Hose	
52	D49070063	2	Hose	
53	D40423000	2	Screw	
54	1441462X1	2	Locknut	Replace and repair. Old not interchangeable with new D41087400
55	D49070064	2	Nut	
56	D49070058	1	Coupling	
57	D49070065	2	Kit, Seal	
58	D45483200	2	O Ring	

FOOTNOTE [A] MAIZE EQUIPMENT

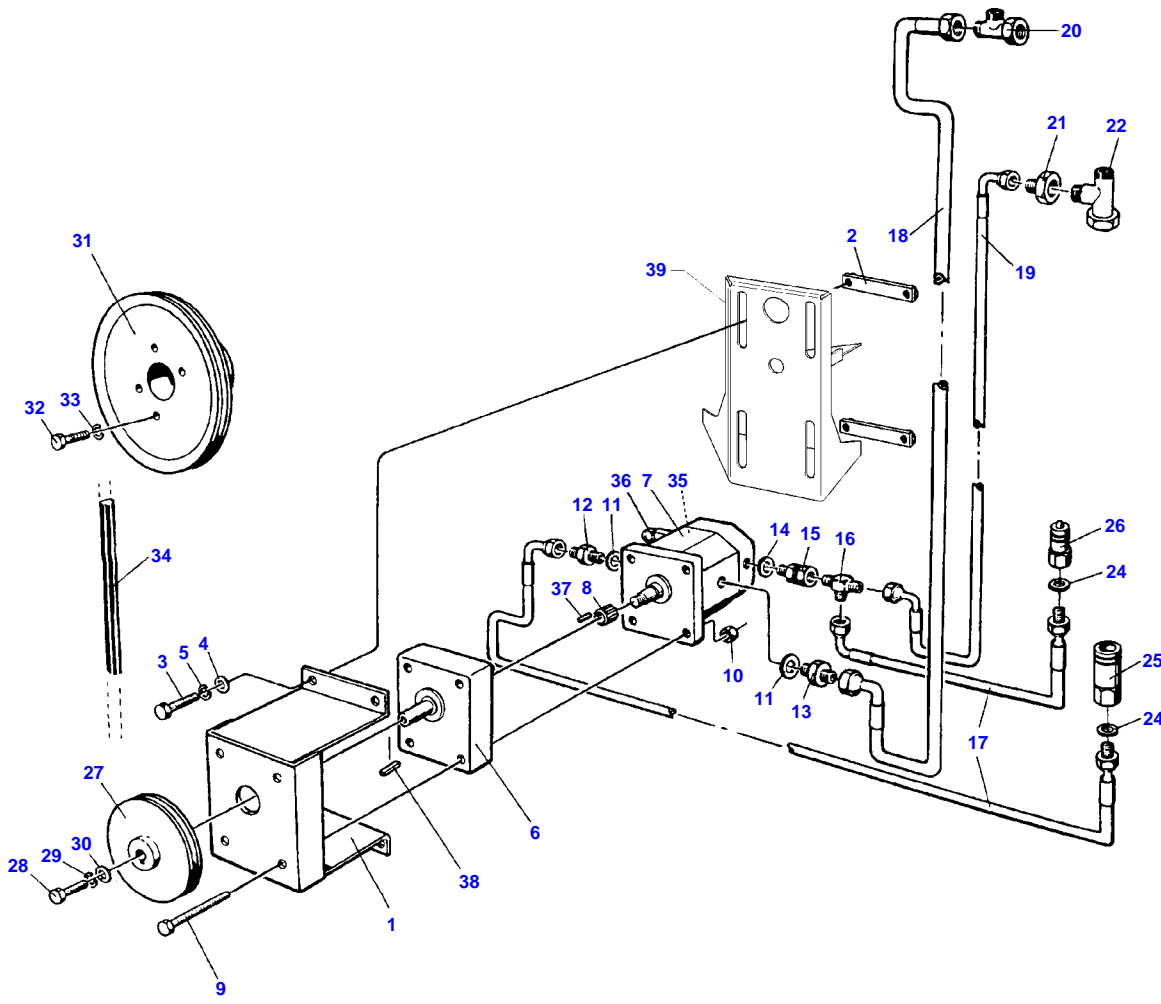
FOOTNOTE [B] OPTIONAL EQUIPMENT

5220 / 5250 COMBINES - 1637410  
D-ZFAD-003-B



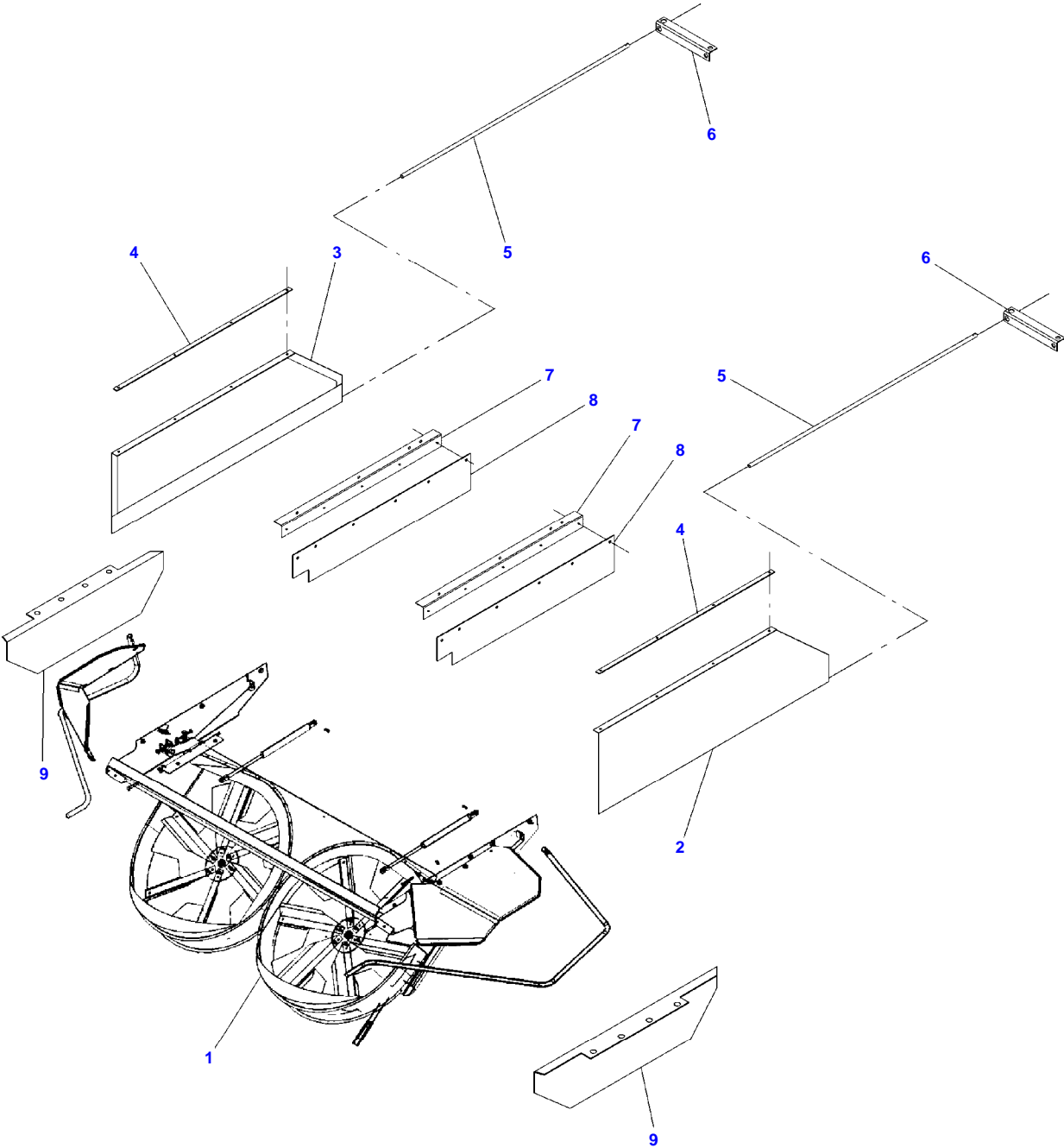
Item	Part Number	Qty	Description	Comments
1	D28485410	1	Bracket	
2	D28485398	1	Bracket	
3	D40405100	4	Hex. Sock. Screw	
4	D20400506	4	Washer	
5	D41100700	4	Spring Washers	
6	D40412700	1	Bolt	
7	D45120038	1	Hydraulic Pump	
8	D45120032	1	Kit, Seal	
9	D40405100	4	Hex. Sock. Screw	
10	D41087500	4	Locknut	
11	D45420100	1	Seal	3/4"
	D45420300	1	Gasket	1/2"
12	D45217400	1	Nipple	
13	D45247400	1	Nipple	
14	D41087700	1	Locknut	
15	D41010900	1	Nut	
16	D45420300	1	Gasket	
17	D45130068	1	Hose	Length 5500mm
18	D45130069	1	Hose	Length 4000mm
19	D45130070	1	Hose	Length 5000mm
20	D45266500	1	Fork	
21	D45273200	1	Union	
22	D45266800	1	Fitting	
23	D45252700	1	Union	
24	D45713700	2	Gasket	Valid from machine/table no,can be used in new as well as in older machines 58975
25	D45135000	1	Union	
26	D45134900	1	Union	
27	D28485390	1	Pulley	
28	D40404900	1	Hex. Sock. Screw	
29	D41100700	1	Spring Washers	
30	D20400408	1	Washer	
31	D28485388	1	Pulley	
32	D40424100	4	Bolt	
33	D41100700	4	Spring Washers	
34	<b>D41921500</b>	1	V Belt	
35	D20400426	3	Washer	
36	D45266300	1	Union	
37	D43102400	1	Key	
38	D45266300	1	Union	
39	D45120039	1	Ring	
40	D45265200	1	Union	

5220 / 5250 COMBINES - 1637410  
D-ZFAD-002-A



Item	Part Number	Qty	Description
1	D49070070	1	Bracket
2	D49070071	2	Mounting
3	D40405100	4	Hex. Sock. Screw
4	D20400506	4	Washer
5	D41100700	4	Spring Washers
6	D49070072	1	Support
7	D49070073	1	Pump
8	D49070074	1	Nut
9	D40424500	4	Screw
10	D41087500	4	Locknut
11	D49070075	2	Gasket
12	D49070076	1	Connection
13	D49070077	1	Connection
14	D49070027	1	Seal
15	D49070078	1	Connection
16	D49070079	1	Connection
17	D49070080	2	Hose
18	D49070081	1	Hose
19	D49070082	1	Hose
20	D45266500	1	Fork
21	D45273200	1	Union
22	D45266800	1	Fitting
23	D49070083	2	Connection
24	D49070022	2	Seal
25	D45135000	1	Union
26	D45134900	1	Union
27	D49070084	1	Pulley
28	D40404900	1	Hex. Sock. Screw
29	D41100700	1	Spring Washers
30	D20400411	1	Washer
31	D49070085	1	Pulley
32	D40424100	4	Bolt
33	D41100700	4	Spring Washers
34	<b>D41921500</b>	1	V Belt
35	D49070086	1	Kit, Seal
36	D49070052	1	Pressure Valve
37	D43171100	1	Key
38	D43102400	1	Key
39	D28485235	1	Console

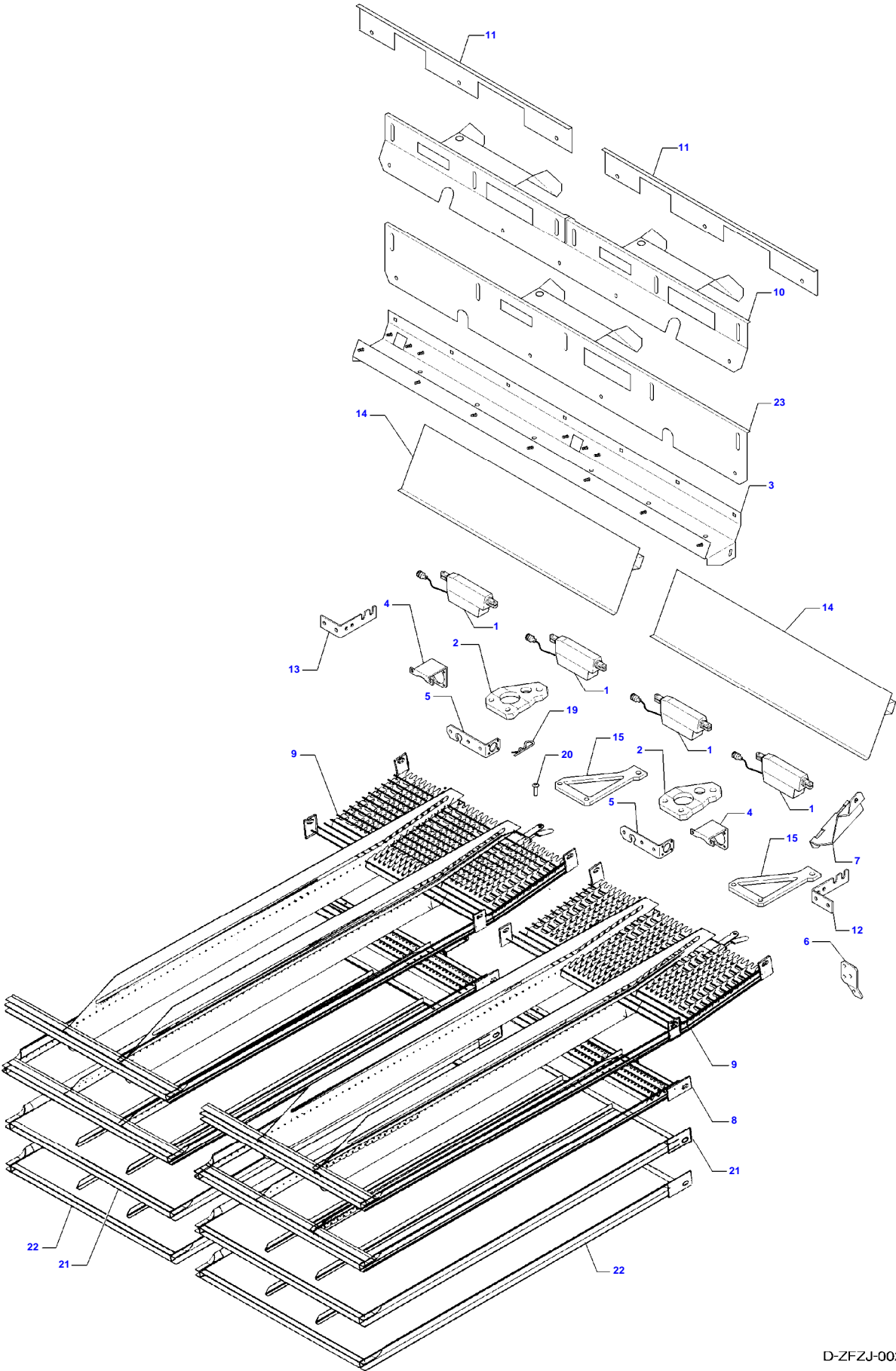
5220 / 5250 COMBINES - 1637410  
D-ZFAE-002-B



## Windbreak And Side Guard For Chaff Spreader

Item	Part Number	Qty	Description	Comments
1	D28085891	1	Spreader	Cpl. Rekord number 1
	D28086430	1	Spreader	Cpl. Rekord number 2
2	D28185783	1	Panel	
3	D28185784	1	Panel	
4	D28185975	2	Rod	
5	D28185976	2	Tube	
6	D28185785	2	Support	
7	D28186019	2	Angle	Up to Serial or Engine Number 58548
8	D28186020	2	Side	Up to Serial or Engine Number 58548
9	D28186666	2	Side	From Serial or Engine Number 58549

5220 / 5250 COMBINES - 1637410  
D-ZFZJ-002-B



D-ZFZJ-002-B

Item	Part Number	Qty	Description	Comments
1	D28482313	4	Actuator	
2	D28482314	2	Bracket	
3	D28482330	1	Bolt	
4	D28482343	2	Stop	
5	D28482347	2	Stop	
6	D28482348	1	Console	
7	D28482352	1	Console	
8	D28482374	2	Sieve	
9	D28482377	2	Sieve	
10	D28482387	1	Rake	
11	D28482391	2	Plate	
12	D28482396	1	Support	
13	D28482397	1	Support	
14	D28482399	1	Profile	
15	D28482400	2	Bracket	
16	D28482410	1	Support	
17	D28482411	1	Support	
18	D28482412	1	Support	
19	D44358000	8	Hair Pin	
20	D45905500	8	Bolt	
21	D28482379	2	Grille	Diameter 2,5 MM
22	D28482380	2	Grille	Diameter 5 MM
23	D28482392	1	Plate	



**Suggest:**

**For more complete manuals. Please go to the home page.**

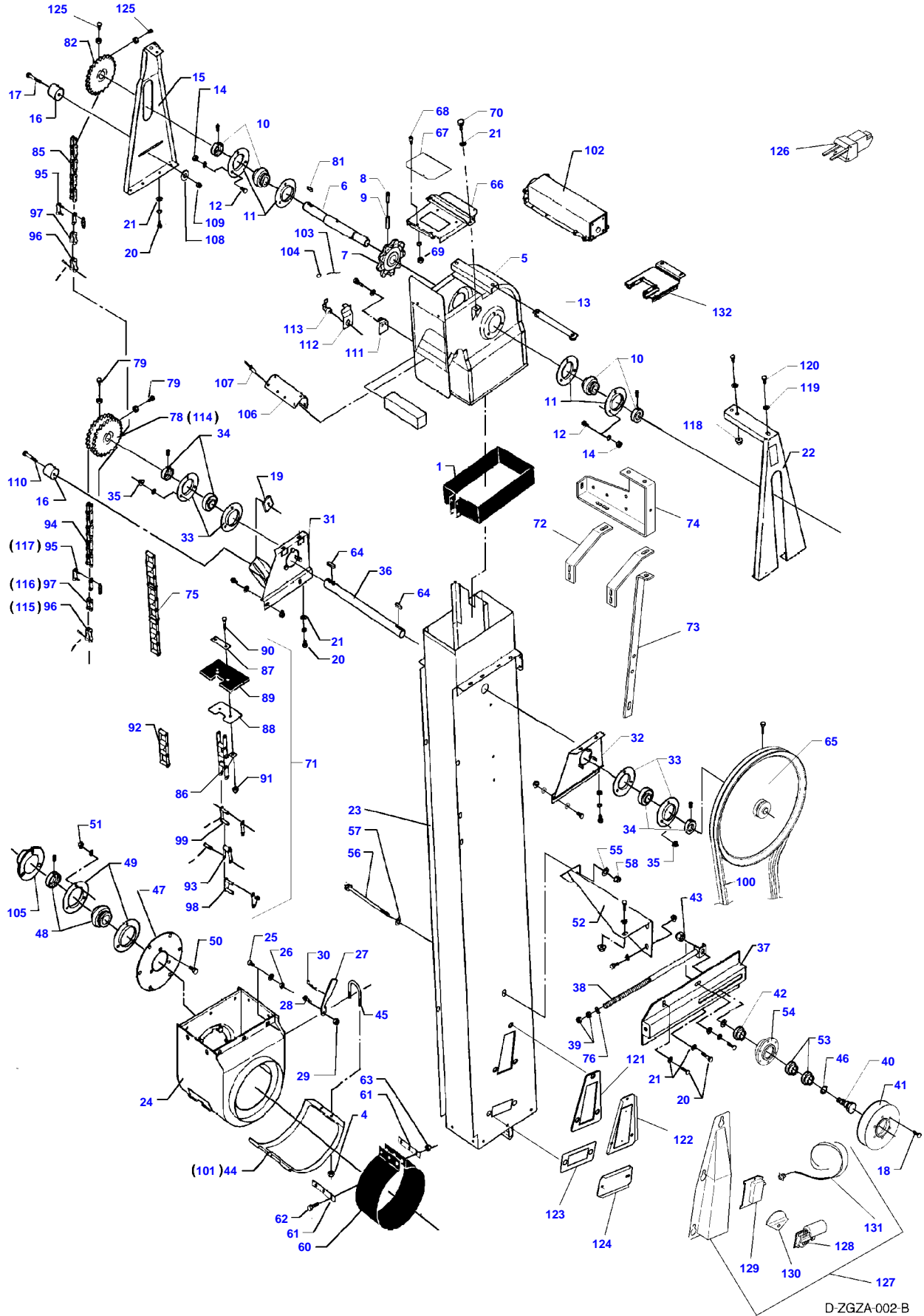
**<https://www.ebooklibonline.com>**

**If the above button click is invalid. Please download this document first, and then click the above link to download the complete manual.**

**Thank you so much for reading**

Page Title	Page Number
Filling Elevator	007-0001
Filler Pipe	007-0002
Return Elevator	007-0003
Returns Thresher	007-0004

5220 / 5250 COMBINES - 1637410  
D-ZGZA-002-B



D-ZGZA-002-B

**<https://www.ebooklibonline.com>**

Hello dear friend!

Thank you very much for reading.

Enter the link into your browser.

The full manual is available for immediate download.

**<https://www.ebooklibonline.com>**