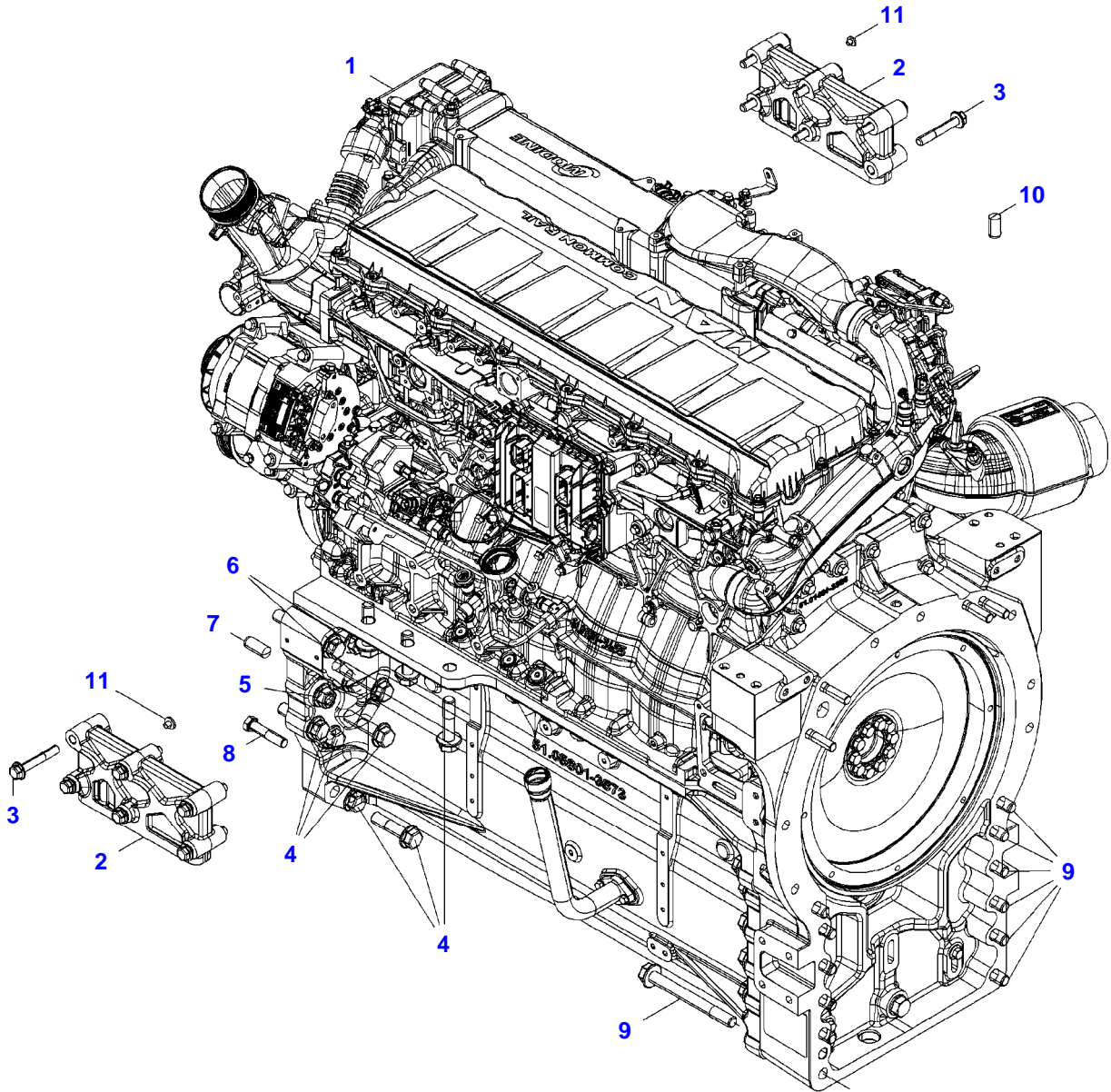


TABLE OF CONTENT

Page Number	Page Title	Page Reference
01-000-TOC	ENGINE, FUEL AND EXHAUST SYSTEM	01-000-TOC
02-000-TOC	AXLES	02-000-TOC
03-000-TOC	STEERING SYSTEM	03-000-TOC
04-000-TOC	DRIVE TRAIN SYSTEM	04-000-TOC
05-000-TOC	COMPRESSED AIR SYSTEM	05-000-TOC
06-000-TOC	HYDRAULIC SYSTEM	06-000-TOC
07-000-TOC	ELECTRICAL SYSTEM	07-000-TOC
08-000-TOC	CAB	08-000-TOC
09-000-TOC	AIR CONDITIONING AND HEATING SYSTEM	09-000-TOC
10-000-TOC	CHASSIS	10-000-TOC
11-000-TOC	DECALS	11-000-TOC
12-000-TOC	WHEELS	12-000-TOC
13-000-TOC	IMPLEMENT LIFT SYSTEM FRONT	13-000-TOC
14-000-TOC	IMPLEMENT LIFT SYSTEM REAR	14-000-TOC
15-000-TOC	LINKAGE	15-000-TOC
16-000-TOC	PRECISION FARMING SYSTEMS	16-000-TOC
17-000-TOC	ACCESSORIES	17-000-TOC



12949844-M-1

Item	Part Number	Qty	Description Comments	Technical Specification
1	72620031	1	DIESEL ENGINE	F528 NA
2	72654471	2	TIE PLATE	
3	72620799	12	HEXAGONAL HEAD BOLT	EN1665 M14X2X90-12 VDA10
4	72620800	16	HEXAGONAL HEAD BOLT	EN1665_M20X80-10.9
5	72620791	2	NUT	DIN6923_M20-10
6	72620801	8	HEXAGONAL HEAD BOLT	EN1665_M20X130-10.9
7	72452520	2	CYLINDER PIN	DIN6325-20M6X50
8	72315582	8	HEXAGONAL HEAD BOLT	DIN 931 M16X75 GWA-10.9
9	72620802	12	HEXAGONAL HEAD BOLT	EN1665_M20X190-10.9
10	72420150	3	CYLINDER PIN	DIN 6325 12M6X40
11	72314743	2	LOCKING PLUG	F2

<https://www.ebooklibonline.com>

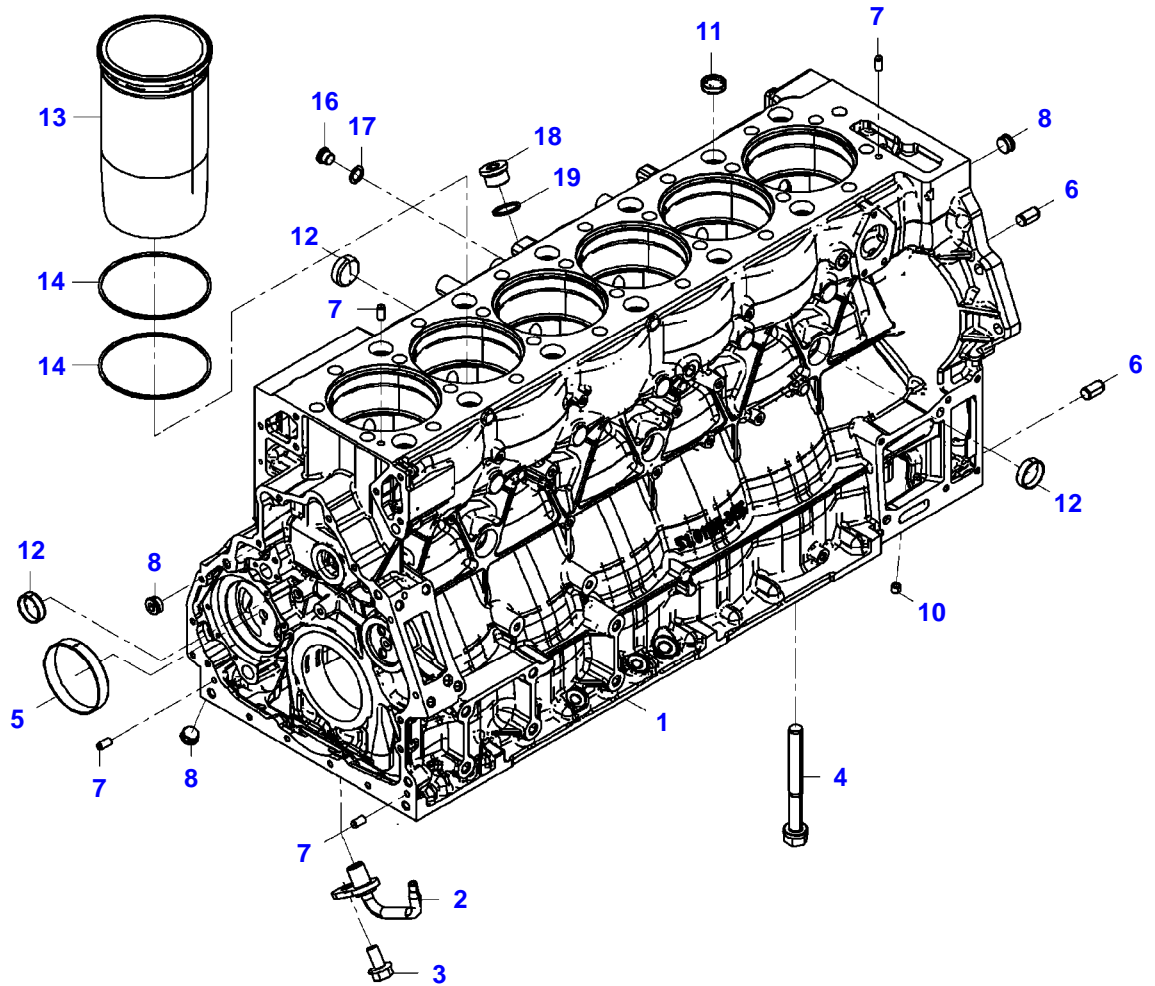
Hello dear friend!

Thank you very much for reading.

Enter the link into your browser.

The full manual is available for immediate download.

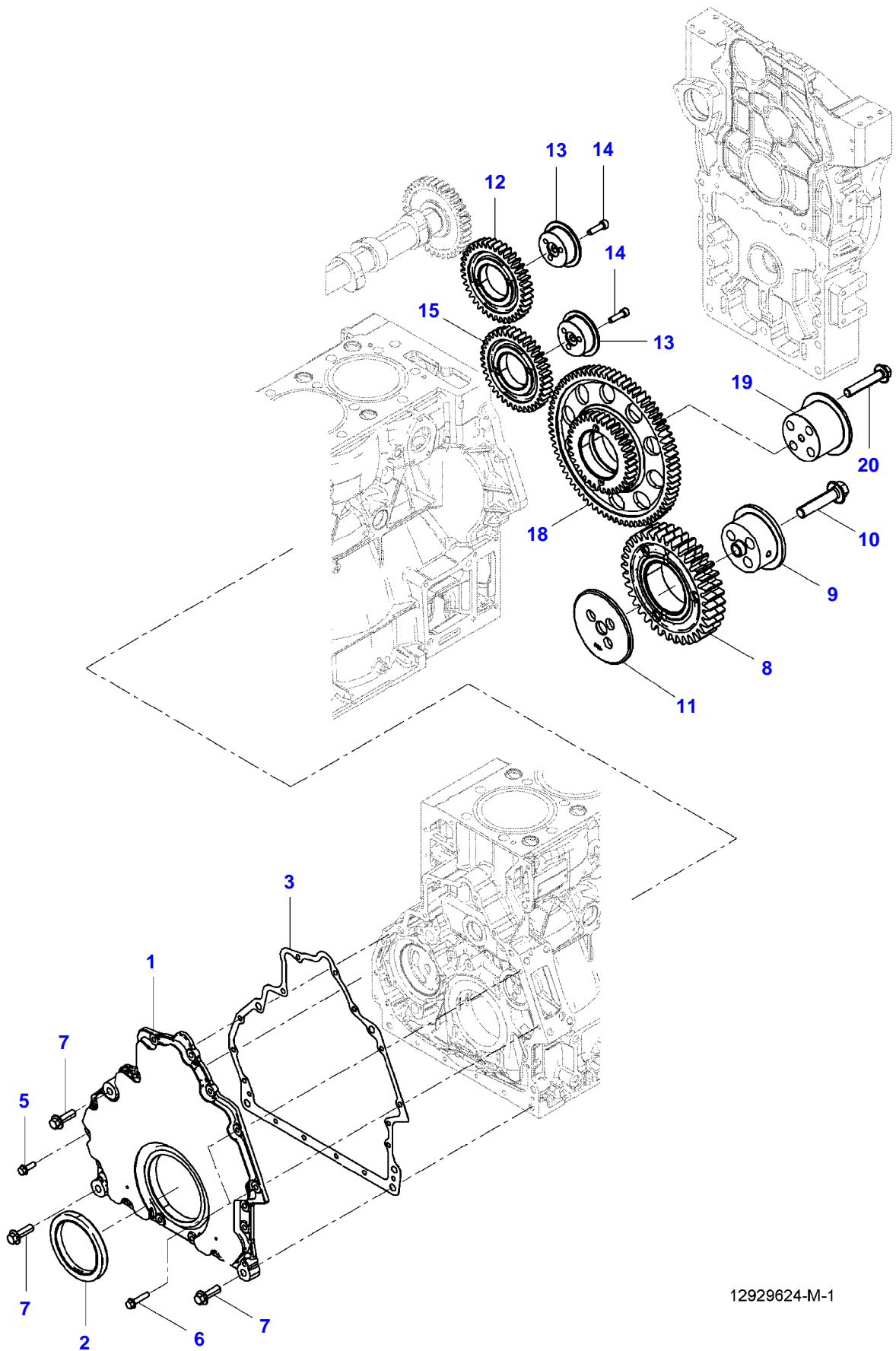
<https://www.ebooklibonline.com>



12928707-M-1

CRANKCASE

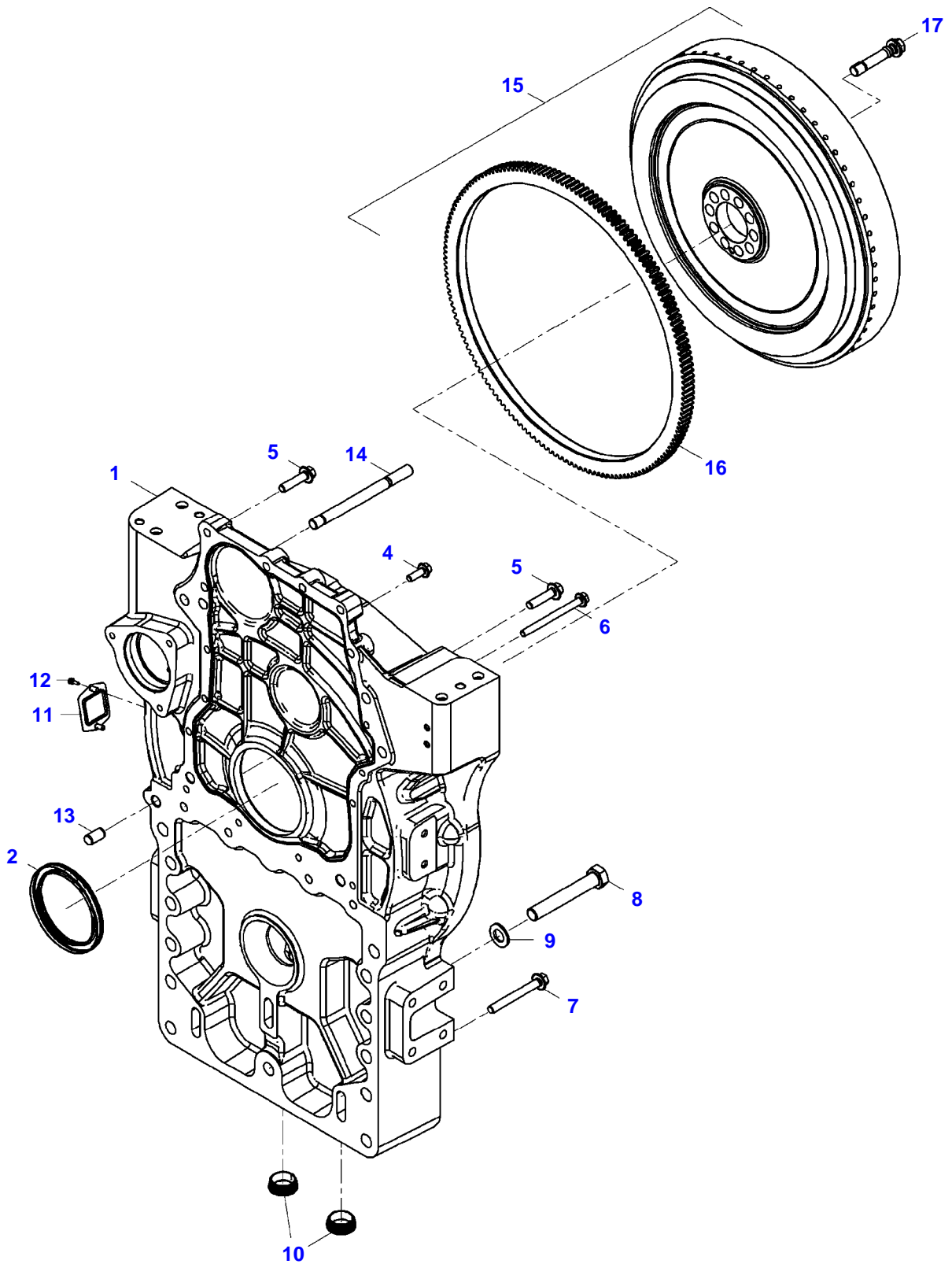
Item	Part Number	Qty	Description Comments	Technical Specification
1	72624329	1	CRANKCASE	
2	72624342	6	OIL SPLASH NOZZLE	
3	ACP0410440	6	HEX BOLT, WITH COLLAR	M6X12-10.9
4	72624532	14	HEX BOLT, WITH COLLAR	M18X2X160,5-10.9
5	72624564	1	BEARING BUSH	D=102X18
6	72624289	2	DOWEL	16H8X24-ST50-2K
7	72624290	4	DOWEL	8M6X18
8	72624540	3	PLUG SCREW	M22X1,5X9-5.8
10	72624285	1	SEALING PLUG	10X6,5-C15PB/9SMNPB28K-BK/BK
11	72311428	12	COVER	
12	72624556	6	CAP COVER	A40,3/14,5-X5CRNI1810N
13	72624337	6	CYLINDER LINER	
14	ACP0425080	12	PROFIED CORD SEAL	
16	72624272	1	PLUG SCREW	M16X1,5-ST-M3360-RK9-K
17	72624304	1	SEALING WASHER	16,3X24X1,5-ST/FKM1-80
18	72624273	1	PLUG SCREW	M24X1,5-ST-M3360-RK12-K
19	72624297	1	SEALING WASHER	A26X31-CU



12929624-M-1

TIMING GEARS AND HOUSING

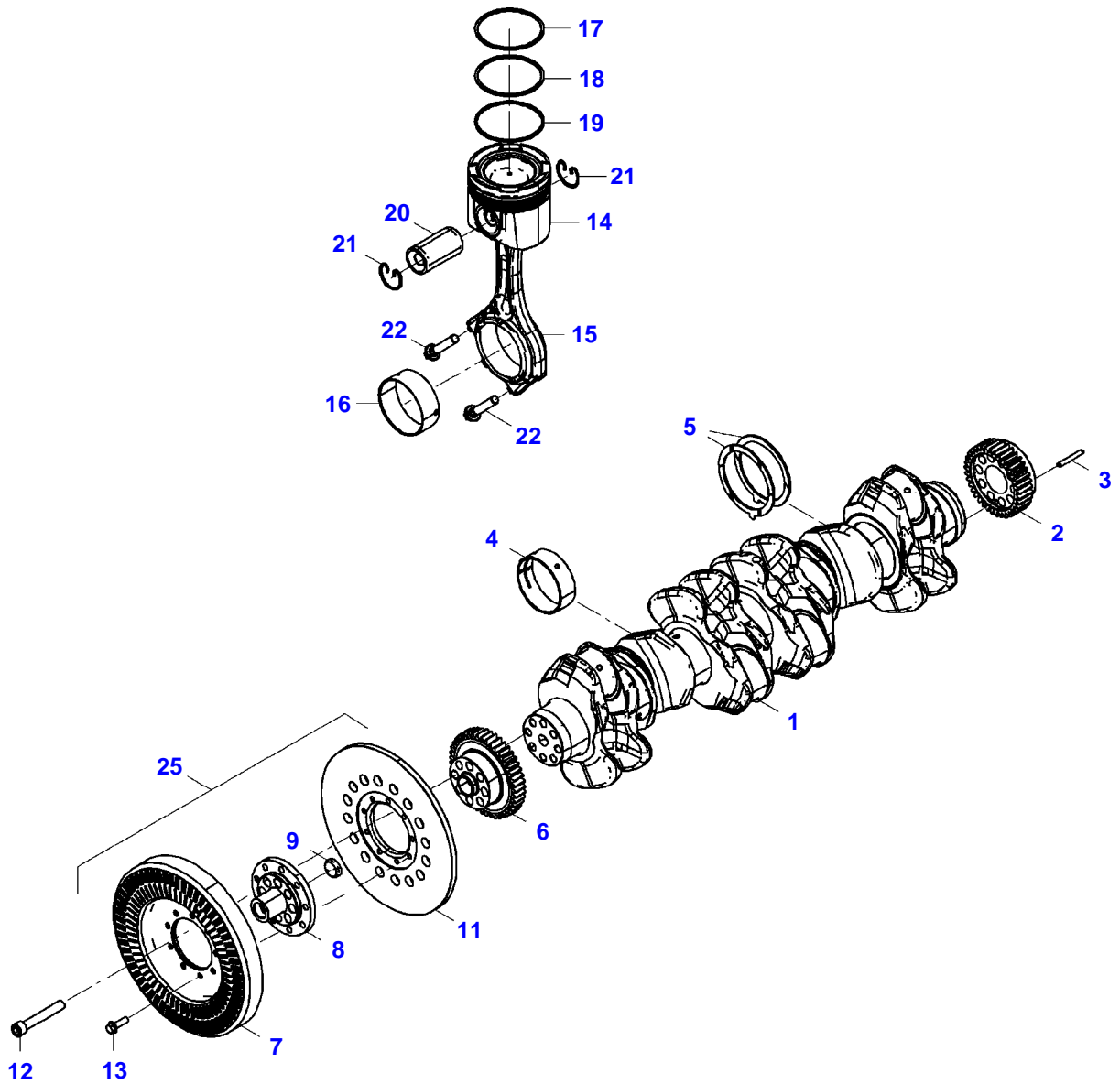
Item	Part Number	Qty	Description Comments	Technical Specification
1	72624339	1	LID	
2	72624340	1	RADIAL SHAFT LIP SEAL	100X130X12
3	72624345	1	HOUSING GASKET	
5	72624231	12	HEX FLANGE CAPSCREW	M8X25-10.9
6	72624234	2	HEX FLANGE CAPSCREW	M8X40-10.9
7	72624250	3	HEX FLANGE CAPSCREW	M12X40-10.9
8	72629236	1	GEAR,IDLER AIR PRESSER	
9	72629237	1	HUB	
10	72624251	3	HEX FLANGE CAPSCREW	M12X55-10.9
11	72624551	1	THRUST WASHER	
12	72624387	1	GEAR,IDLER	
13	72629228	2	HUB	
14	72624213	6	SOCKET HEAD BOLT	M8X30-10.9
15	72624386	1	GEAR,IDLER	
18	72624385	1	GEAR,IDLER	
19	72629229	1	HUB	
20	72624253	4	HEX FLANGE CAPSCREW	M14X80-10.9



12929934-M-1

FLYWHEEL AND HOUSING

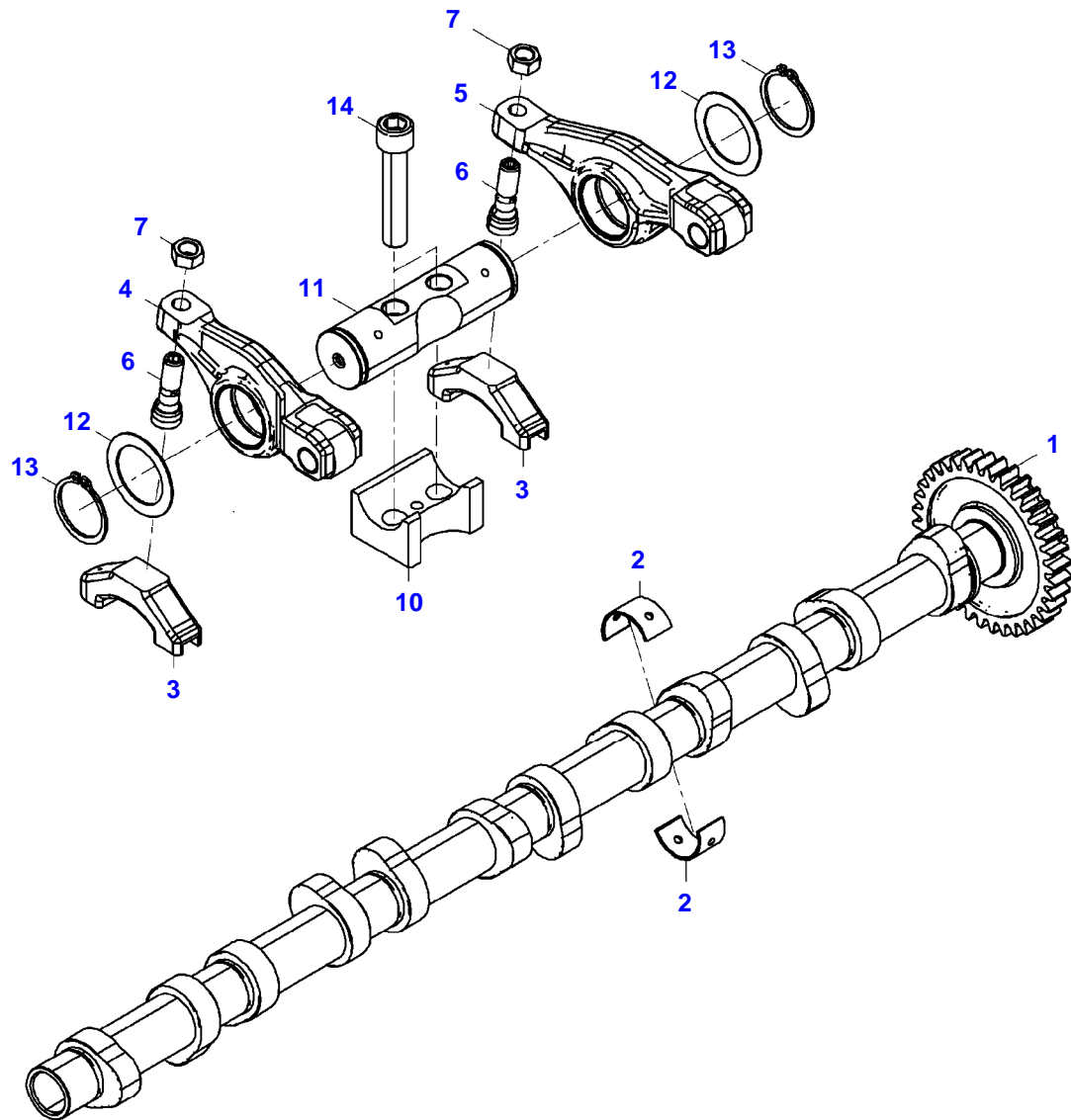
Item	Part Number	Qty	Description Comments	Technical Specification
1	72625910	1	FLYWHEEL HOUSING	
2	72624341	1	RADIAL SHAFT LIP SEAL	115X140X12LD-ACM/PTFE
4	72624256	9	HEX FLANGE CAPSCREW	M10X30-12.9
5	72624258	10	HEX FLANGE CAPSCREW	M12X50-12.9
6	72624247	1	HEX FLANGE CAPSCREW	M10X120-10.9
7	72624259	2	HEX FLANGE CAPSCREW	M12X100-12.9
8	72624205	1	HEXAGONAL HEAD BOLT	M20X130-10.9
9	72624281	1	WASHER	20X37X3-200HV
10	72314695	2	LOCKING PLUG	
11	ACP0353880	1	BLANK FLANGE	
12	72624230	2	HEX FLANGE CAPSCREW	M8X20-10.9
13	72624289	1	DOWEL	16H8X24-ST50-2K
14	72624262	4	STUD BOLT	M16X1,5X180-12.9-ZNPHR3F
15	72627885	1	FLYWHEEL INCLUDES ITEMS 16	
16	72624355	1	STARTER RING	
17	72624533	10	HEX BOLT, WITH COLLAR	M16X1,5X81-12.9-ZNPHRF



12930450-M-1

CRANKSHAFT AND PISTONS

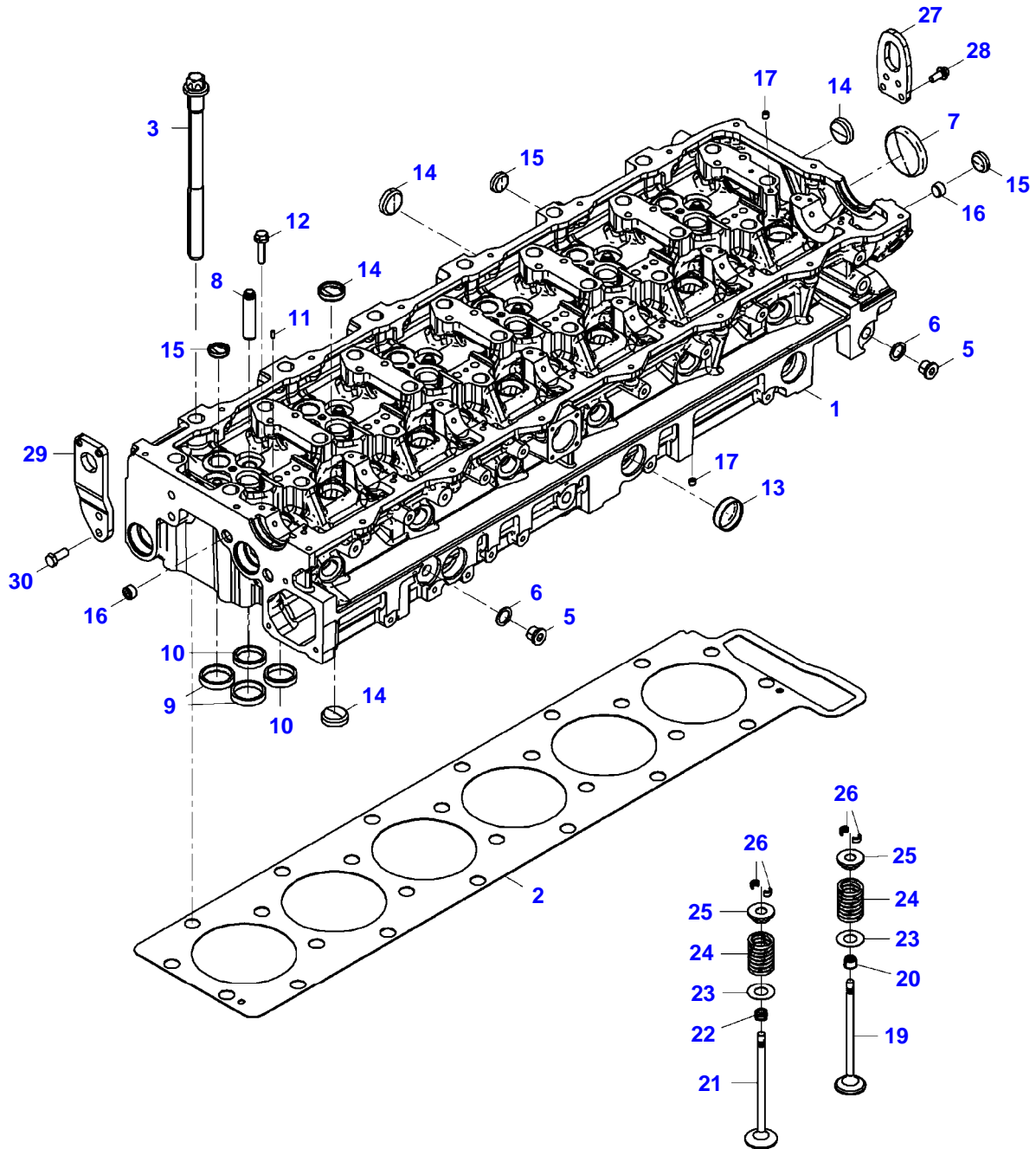
Item	Part Number	Qty	Description Comments	Technical Specification
1	ACP0353530	1	CRANKSHAFT	
2	72624350	1	CRANKSHAFT GEAR INCLUDES ITEMS 3	
3	72624291	1	SPIRAL PIN	8X60-ST
4	72624330	7	MAIN BEARING	
5	72624336	2	THRUST WASHER	
6	72624349	1	CRANKSHAFT GEAR	
7	72654401	1	VIBRATION DAMPER	
8	72624353	1	HUB INCLUDES ITEMS 9,10	
9	72624557	1	CAP COVER	A34,2/10-X5CRNI1810N
11	72624352	1	MASS BALANCER	
12	72624212	8	SOCKET HEAD BOLT	M16X1,5X100-10.9
13	72624223	9	HEX FLANGE CAPSCREW	M10X35-8.8
14	ACP0427070	6	PISTON	
15	72627504	6	PISTON ROD	340X115X43
16	72624357	6	CONROD BEARING	D=95X36
17	72624363	1	TRAP.SECTION RG.	D=126X3,5
18	72624365	1	CHAMFER PIST.RG.	D=126X2,5
19	72624364	1	U/MKME-CHAMF.RG.	D=126X3,5
20	72624362	1	PISTON PIN	
21	72624553	2	SNAPRING	52X2-FDST
22	72624545	2	HEXAGON FLANGE BOLT	M13X1,5X66-11.9
25	72629212	1	VIBRATION DAMPER INCLUDES ITEMS 7-11,13	ASM.



12931704-M-1

CAMSHAFT AND VALVE

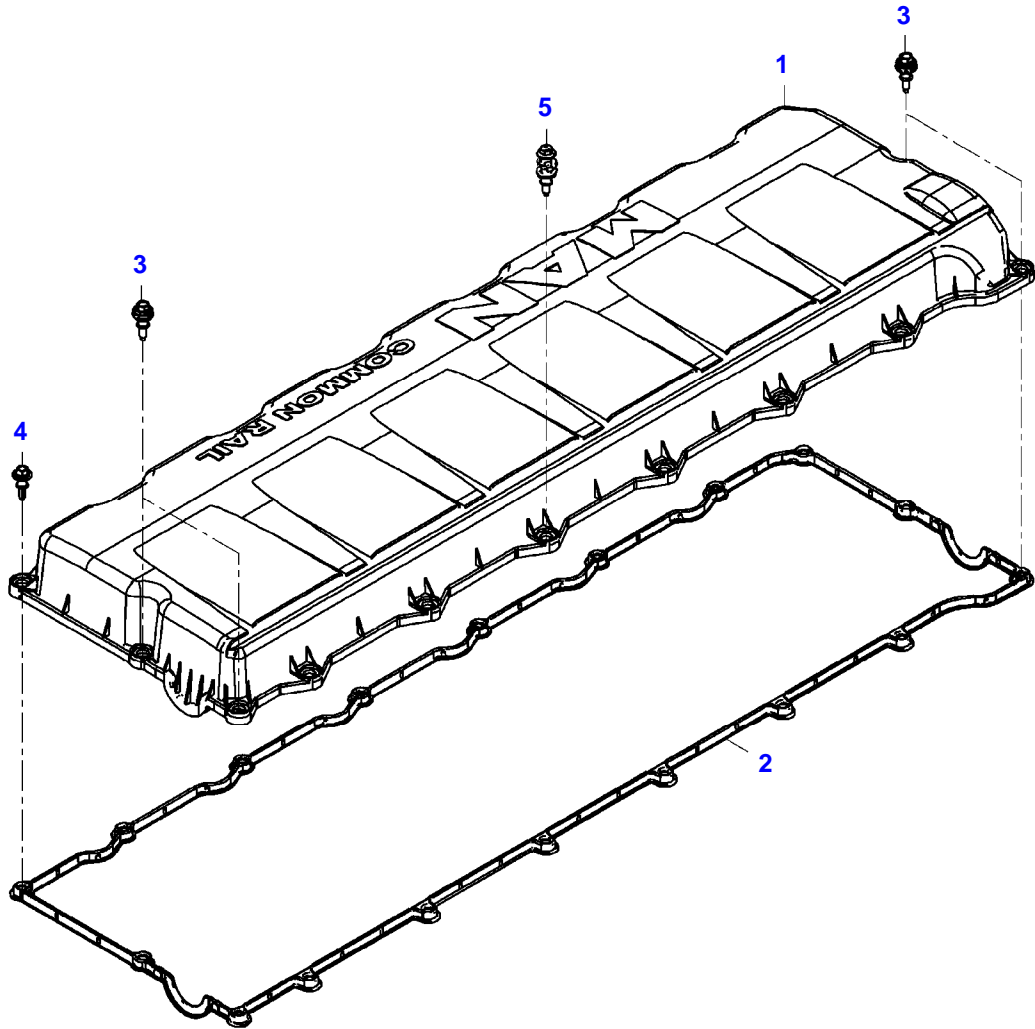
Item	Part Number	Qty	Description Comments	Technical Specification
1	72624383	1	CAMSHAFT	
2	72624384	14	CAMSHAFT BUSHING	D=45X26
3	72624377	12	VALVE BRIDGE	
4	72624378	1	ROCKER ARM	
5	72624379	1	ROCKER ARM	
6	72624382	2	ADJUSTING SCREW	
7	72313252	2	NUT	
10	72629239	1	BEARING SUPPORT	
11	72624381	1	ROCKER SHAFT ASM	
12	72624547	2	SHIM RING	32X45D12X1-DIN1544
13	72624292	2	LOCK WASHER	32X1,50-ZNPHR5F
14	72624215	2	SOCKET HEAD BOLT	M12X60-10.9



12932888-M-1

CYLINDER HEAD AND VALVES

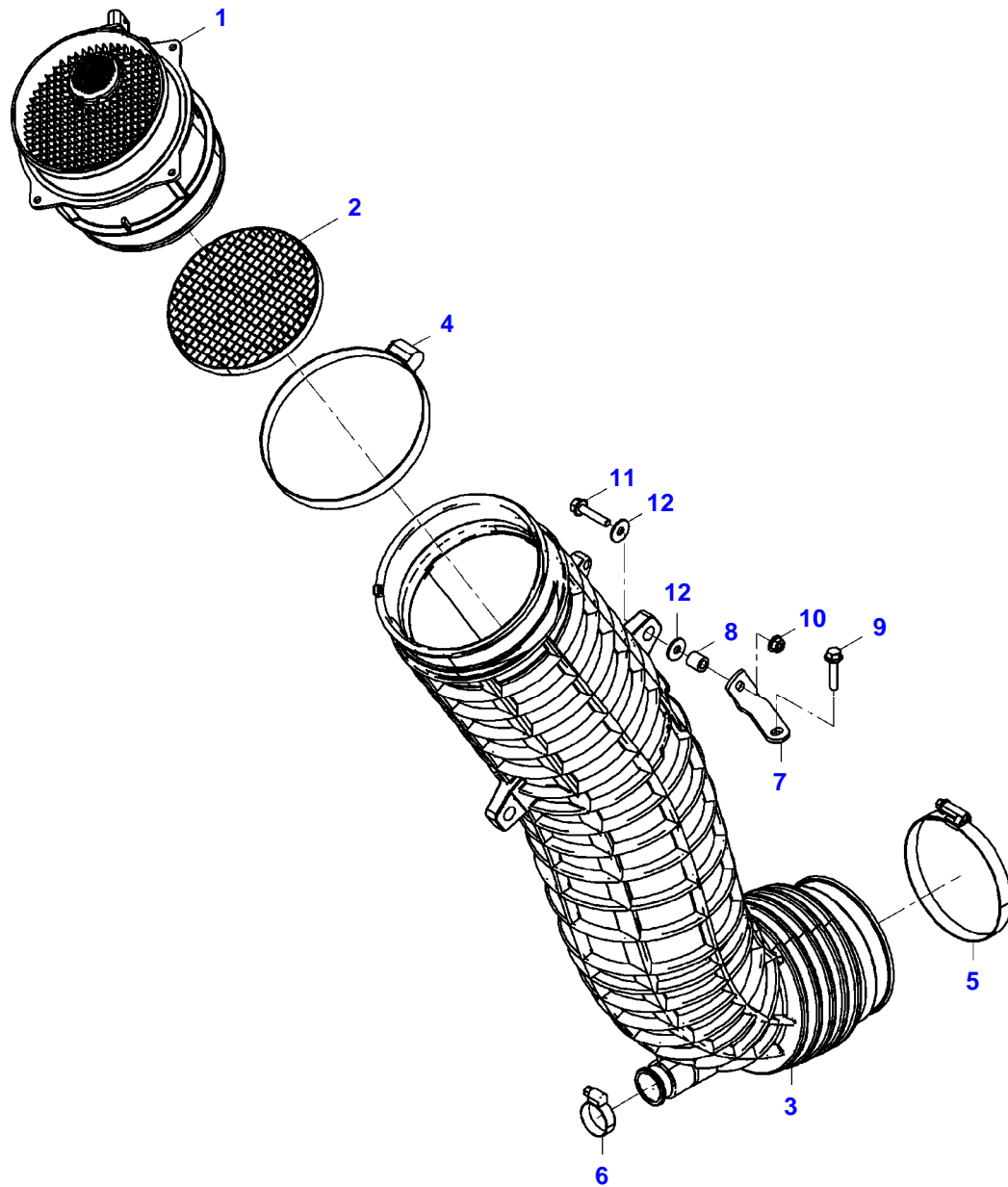
Item	Part Number	Qty	Description Comments	Technical Specification
1	72627883	1	CYLINDER HEAD	70HZ
2	72624371	1	CYLINDER HEAD GASKET	
3	72630163	26	HEXAGON FLANGE BOLT	M18X2X246
5	72624272	3	PLUG SCREW	M16X1,5-ST-M3360-RK9-K
6	72624304	3	SEALING WASHER	16,3X24X1,5-ST/FKM1-80
7	72624558	1	CAP COVER	A63,1/12,5-X5CRNI1810N
8	72624367	24	VALVE GUIDE	
9	72624369	12	VALVE SEAT RING INLET	
10	72627821	12	VALVE SEAT RING OUTLET	
11	72624287	14	DOWEL	4H8X10-ST50-2K
12	72624217	14	HEX FLANGE CAPSCREW	M8X35-8.8
13	72311424	3	COVER	
14	72311428	38	COVER	
15	72311429	15	COVER	
16	72624541	4	PLUG SCREW	M16X1,5-ST-M3360-RK8-K
17	72417088	2	SEALING PLUG	
19	72629225	12	EXHAUST VALVE	
20	72624390	12	VALVE STEM SEAL	
21	72624372	12	INLET VALVE	
22	72624390	12	VALVE STEM SEAL	
23	72624548	24	SHIM	16,5X34X0,5-C67S+OT
24	72624374	24	VALVE SPRING	
25	72624375	24	VALVE SPRING RETAINER	
26	72624376	48	VALVE SPRING KEY	
27	72624494	2	HOOK	
28	72624249	4	HEX FLANGE CAPSCREW	M12X30-10.9
29	72624495	1	SUSPENSION EYE	
30	72624209	2	HEXAGONAL HEAD BOLT	M12X30SK-10.9



12933215-M-1

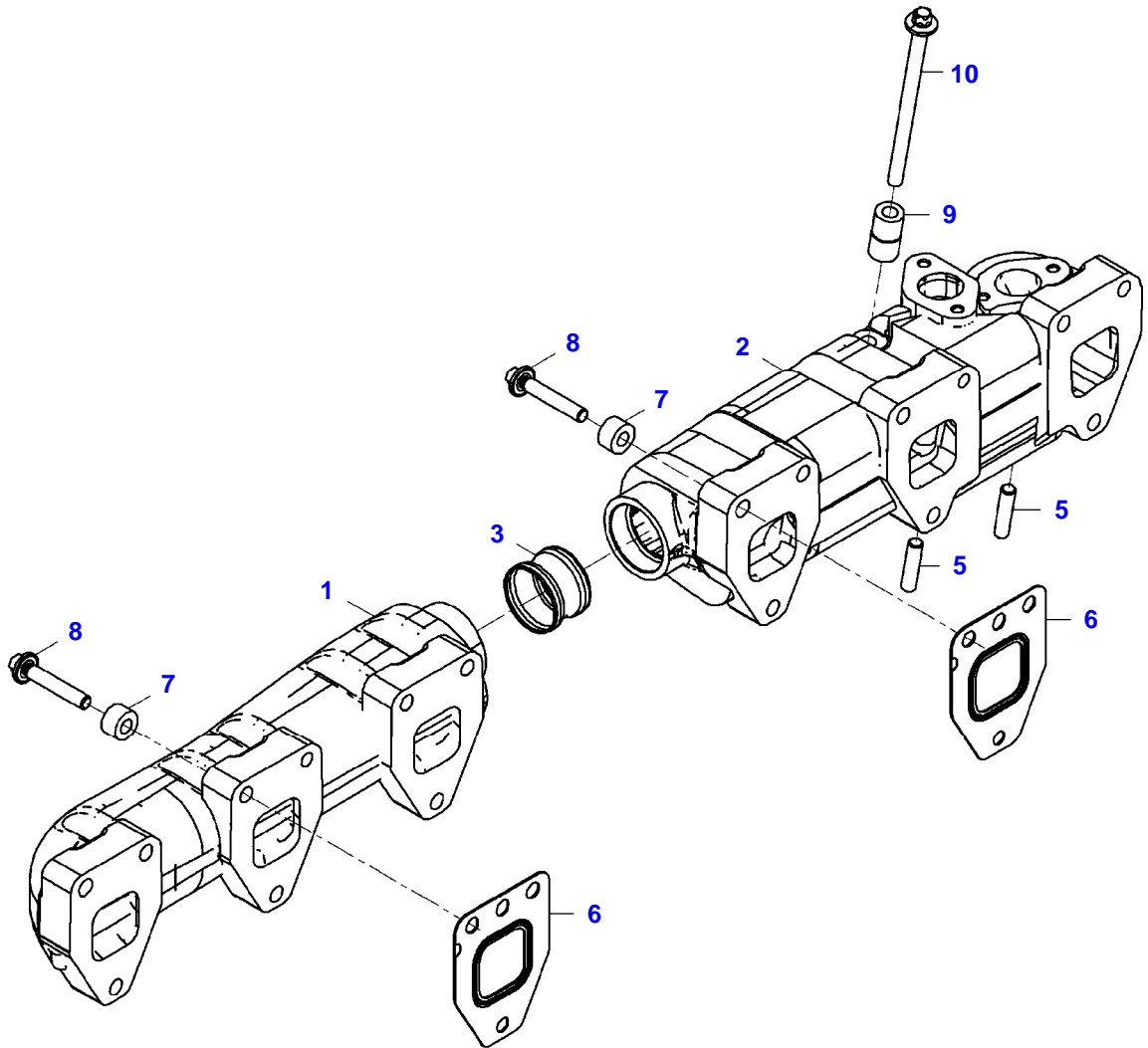
VALVE COVER

Item	Part Number	Qty	Description Comments
1	72624370	1	CYLINDER HEAD COVER INCLUDES ITEMS 2-5
2	ACP0153600	1	CYLINDER HEAD COVER SEAL
3	72624570	4	INSULATING MATERIAL
4	72624571	8	BUSHING
5	72624546	6	SCREW



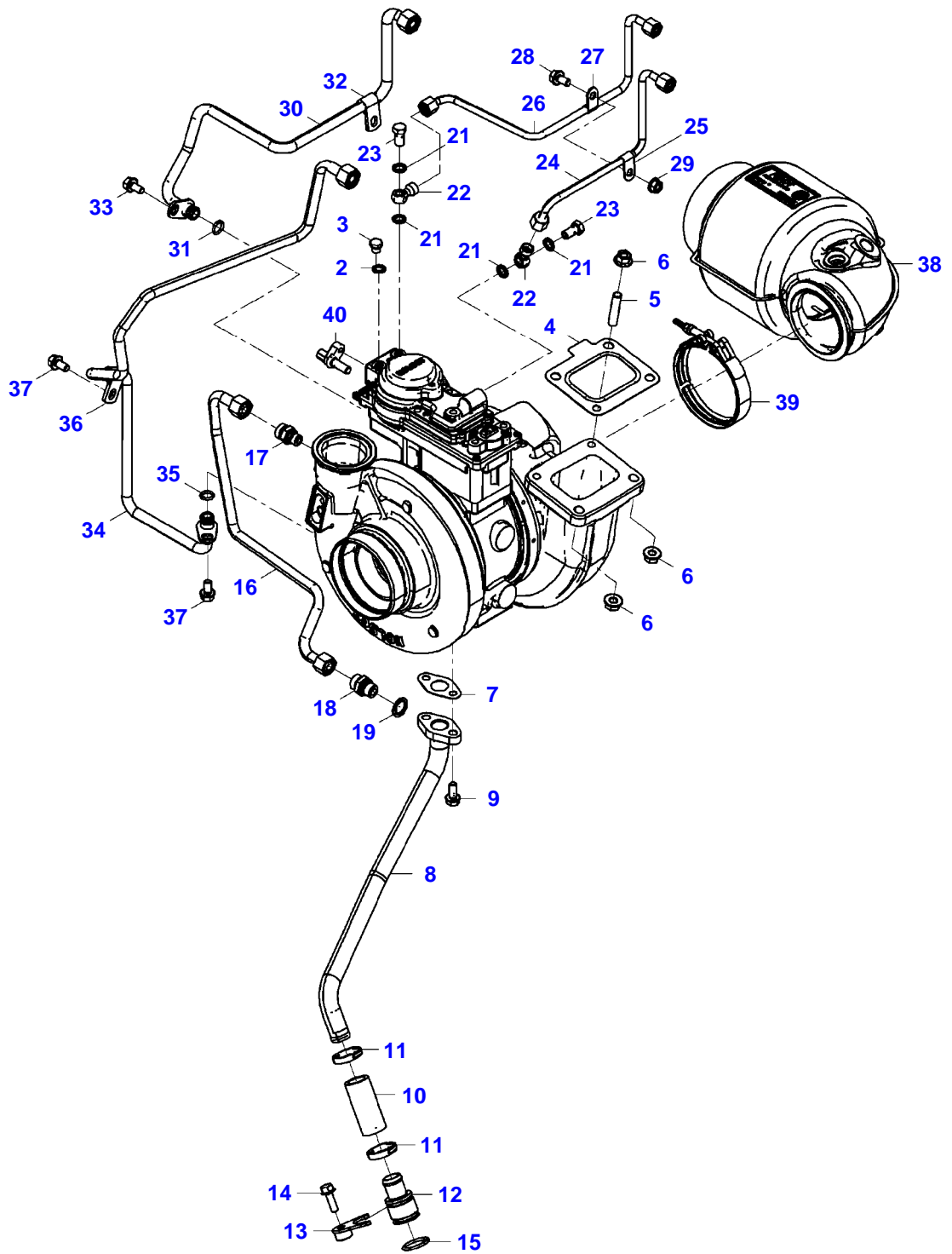
12933230-M-1

Item	Part Number	Qty	Description Comments	Technical Specification
1	72620060	1	SENSOR	
2	72623875	1	MESH PANEL	
3	72654311	1	AIR INTAKE HOSE	
4	72311175	1	HOSE CLIP	
5	72311173	1	HOSE CLIP	
6	72373531	1	HOSE CLIP	
7	72624458	1	HOLDER	
8	72623872	1	BUSHING	
9	72624226	1	HEX FLANGE CAPSCREW	M6X20-10.9
10	72313266	1	NUT	DIN 934 M6-8A3L
11	72315633	1	HEXAGONAL HEAD BOLT	DIN 933 M6X25-8.8A3L
12	72311822	2	DISC	DIN9021-6,4-140HV-A3L



12933457-M-1

Item	Part Number	Qty	Description Comments	Technical Specification
1	72624440	1	EXHAUST ELBOW	
2	72627944	1	EXHAUST ELBOW	
3	72624442	1	CONNECTING PIECE	
5	72624538	2	STUD BOLT	M10X30-SD
6	72624452	6	GASKET	
7	ACP0353750	18	BUSHING	10,5X22X13
8	72315395	18	WASHER HEAD BOLT	
9	72624563	1	BUSHING	10,5X20X37-21CRMOV57V
10	72624544	1	HEXAGON FLANGE BOLT	M10X145-1.4980-E14-SD



12933506-M-1

Item	Part Number	Qty	Description Comments	Technical Specification
1	72624455	1	EXHAUST TURBOCHARGER INCLUDES ITEMS 20	
2	72624301	1	SEALING WASHER	10,3X16X1,5-ST/FKM1-80
3	72608291	1	SCREW	
4	72624453	1	GASKET	
5	72624539	1	STUD BOLT	M10X35-SD
6	72624276	3	SHOULDER HEX NUT	M10-GA-C3J
7	72624454	1	GASKET	
8	72624402	1	OIL RETURN LINE	
9	72624230	2	HEX FLANGE CAPSCREW	M8X20-10.9
10	72312632	1	HOSE	
11	72624590	2	HOSE CLIP	29,9-33,1
12	72624601	1	HOSE BARB	22/33F8X30-11SMNPB30-P3K
13	72624328	1	HOLDER	
14	72624231	1	HEX FLANGE CAPSCREW	M8X25-10.9
15	72624300	1	O-RING SEAL	28X3B-FPM1-80-GN
16	72624401	1	OIL PRESSURE LINE	
17	72624602	1	SOCKET	
18	72624321	1	THREADED SOCKET	L12A-M-ST
19	72624304	1	SEALING WASHER	16,3X24X1,5-ST/FKM1-80
21	72624301	4	SEALING WASHER	10,3X16X1,5-ST/FKM1-80
22	72624594	2	BANJO UNION	D10,1/M14X1,5
23	72627849	2	BANJO BOLT	
24	72624415	1	COOLANT LINE INCLUDES ITEMS 25	
25	72624585	1	TUBE CLAMP	A8X16X28-9-UST37-2
26	72624416	1	COOLANT LINE INCLUDES ITEMS 27	
27	72624585	1	TUBE CLAMP	A8X16X28-9-UST37-2
28	72624229	1	HEX FLANGE CAPSCREW	M8X16-10.9
29	72624275	1	SHOULDER HEX NUT	M8-8SC-8-SW13
30	72624417	1	COOLANT LINE INCLUDES ITEMS 31,32 UP TO ENGINE S/N 52249811644978	
	ACP0427160	1	COOLANT LINE INCLUDES ITEMS 31,32 FROM ENGINE S/N 52249812075002	
31	ACP0353400	1	SEALING WASHER	12,42X1,78N-FKM2-70
32	72624584	1	TUBE CLAMP	B12,1X20X33-9X13-UST37-2
33	72624229	1	HEX FLANGE CAPSCREW	M8X16-10.9
34	72624422	1	COOLANT LINE INCLUDES ITEMS 35,36 UP TO ENGINE S/N 52249811644978	
	ACP0427170	1	COOLANT LINE INCLUDES ITEMS 35,36 FROM ENGINE S/N 52249812075002	
35	ACP0353400	1	SEALING WASHER	12,42X1,78N-FKM2-70
36	72624584	1	TUBE CLAMP	B12,1X20X33-9X13-UST37-2
37	72624229	2	HEX FLANGE CAPSCREW	M8X16-10.9
38	72624489	1	EXHAUST PIPE	
39	72624591	1	PROFILE CLIP	
40	72624517	1	ENGINE SPEED SENSOR B277	



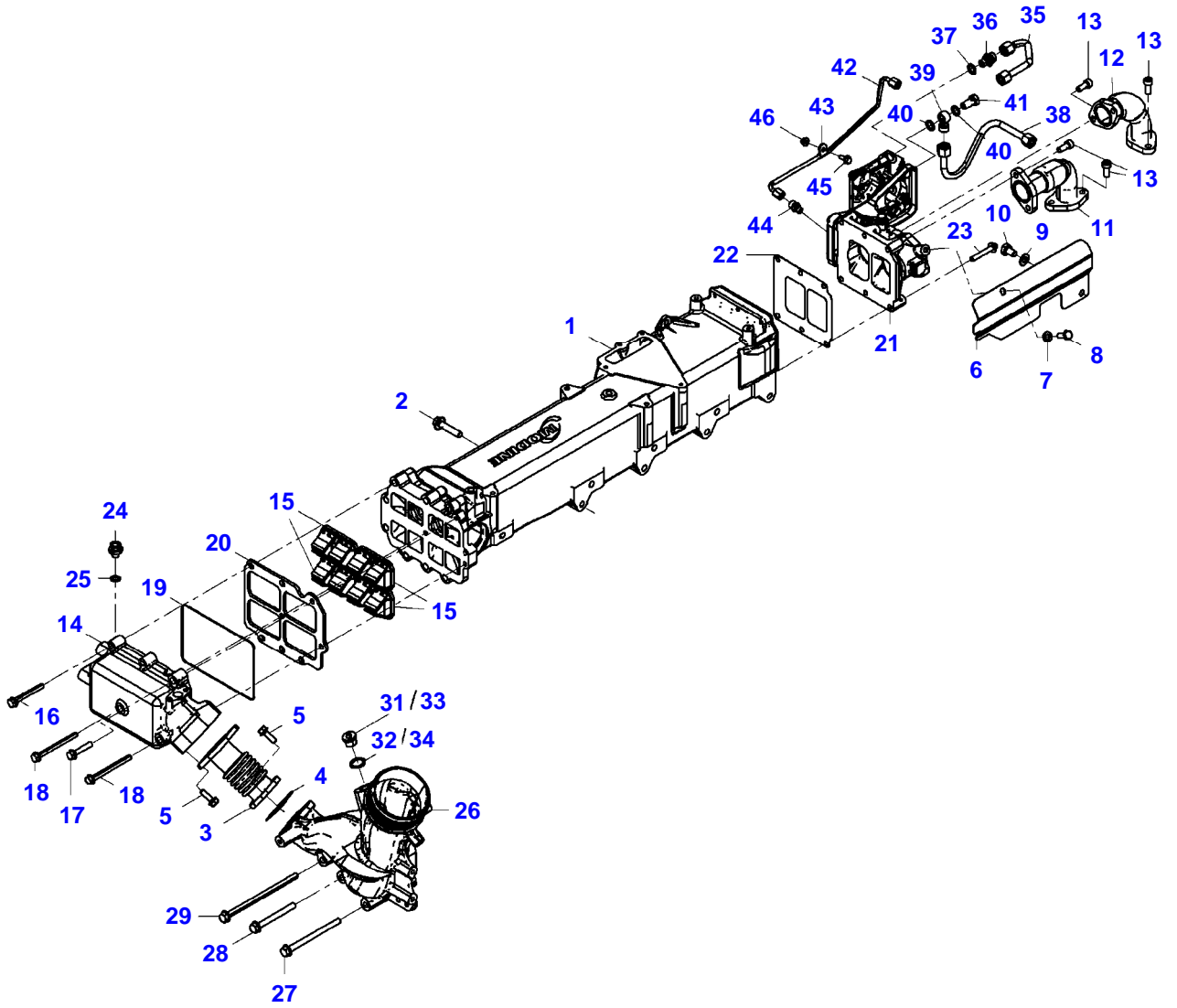
Suggest:

For more complete manuals. Please go to the home page.

<https://www.ebooklibonline.com>

If the above button click is invalid. Please download this document first, and then click the above link to download the complete manual.

Thank you so much for reading



12934090-M-1

Item	Part Number	Qty	Description Comments	Technical Specification
			UP TO ENGINE S/N 52245781864573	
1	72627911	1	EGR-MODULE INCLUDES ITEMS 14-23	
2	72624242	8	HEX FLANGE CAPSCREW	M10X45-10.9
3	72624447	1	EXHAUST PIPE	
4	72624450	1	GASKET	
5	72624231	4	HEX FLANGE CAPSCREW	M8X25-10.9
6	72624443	1	HEAT SHIELD	
7	72624279	1	WASHER	8X16X1,6-200HV
8	72624208	1	HEXAGONAL HEAD BOLT	M8X20-8.8-C3J
9	72624280	1	WASHER	10X20X2-200HV
10	72624206	1	HEXAGONAL HEAD BOLT	M10X16-8.8
11	72624446	1	EXHAUST PIPE	
12	ACP0405500	1	EXHAUST PIPE	
13	72624535	8	SOCKET HEAD BOLT	M8X20-GA-C3J
14	72624444	1	HOUSING	
15	72624662	4	CHECK VALVE	
16	72455491	7	HEXAGONAL HEAD BOLT	
17	72624663	1	HEX FLANGE CAPSCREW	M8X45-10.9
18	72629238	2	HEX FLANGE CAPSCREW	
19	72624451	1	SEALING WASHER	
20	72624445	1	SPACER PLATE	
21	72627913	1	AIR STRANGLER	
22	72624666	1	GASKET	143X136X0,29
23	72624667	6	HEXAGON FLANGE BOLT	M8X50-1.7709-E12-GA
24	72624605	1	HOSE COUPLER	
25	72624302	1	SEALING WASHER	12,3X18X1,5-ST/FKM1-80
26	72624457	1	CHARGE AIR ELBOW	
27	72624238	1	HEX FLANGE CAPSCREW	M8X110-10.9
28	72624236	1	HEX FLANGE CAPSCREW	M8X80-10.9
29	72624240	1	HEX FLANGE CAPSCREW	M8X150-10.9
31	72624269	1	PLUG SCREW	M20X1,5-ST-A3C
32	72624305	1	SEALING WASHER	20,3X28X1,5-ST/FKM1-80
33	72629234	1	PLUG SCREW	
34	72624302	1	SEALING WASHER	12,3X18X1,5-ST/FKM1-80
35	72624418	1	COOLANT LINE	
36	72624323	1	THREADED SOCKET	L10A-M12X1,5-ST
37	72624302	1	SEALING WASHER	12,3X18X1,5-ST/FKM1-80
38	72624419	1	COOLANT LINE	
39	72310189	1	RING FITTING	
40	72624302	2	SEALING WASHER	12,3X18X1,5-ST/FKM1-80
41	72624325	1	BANJO BOLT	8-M3360-RK5-K
42	72624449	1	PIPE INCLUDES ITEMS 43	
43	72624583	1	TUBE CLAMP	B6,1X16X20,5-7X10-UST37-2
44	72624322	1	THREADED SOCKET	SDS-L6XM10-B
45	72624225	1	HEX FLANGE CAPSCREW	M6X16-10.9
46	72624668	1	SHOULDER HEX NUT	M6-10

<https://www.ebooklibonline.com>

Hello dear friend!

Thank you very much for reading.

Enter the link into your browser.

The full manual is available for immediate download.

<https://www.ebooklibonline.com>