

Operator's Manual

Combine

FENDT 8300

FENDT 8350

+ Auto Level

+ Rotary Separator



Contents

1	General Information.....	9
1.1	Appropriate Use.....	11
1.2	Preface.....	12
1.3	Product Identification.....	13
1.4	Sectional Drawing and Parts Identification.....	14
2	Safety.....	17
2.1	General Safety Precautions.....	18
2.2	Attention - Warning Symbols.....	19
2.3	Safety Precautions.....	20
2.4	Road Transport.....	22
2.5	CE Marking and Type Plate on the Combine.....	23
2.6	Warning/Instruction decals.....	34
2.7	Position of CE Markings and Type Plate.....	39
3	Operation, Controls and Cab.....	43
3.1	Before Start.....	45
3.2	Operator Cab, Arrangement and Controls.....	48
	Optional Extra.....	50
3.3	Safety Precautions.....	51
3.4	Starting and Stopping the Engine.....	52
	Starting the engine.....	52
	Stopping the engine.....	53
3.5	Drive Controls.....	54
	Multi-Function Lever.....	54
	Adjustable Armrest.....	55
	Changing Gears.....	55
	Reduced Engine Revolutions in Road Transport (Speed Matching System).....	56
	Steering column.....	57
	Brakes.....	57
	Adjustment of Operator Seat.....	58
	Adjustment of Air-Suspended Seat.....	58
	Ladder.....	59
	Removable Ladder.....	59
	Lights.....	60
	Main Light and Work Light.....	60
3.6	Operator Cab, Ventilation.....	61
	Air-Conditioning.....	61
	Using the Air-Conditioning.....	61
3.7	Printer.....	62
	Exchanging Paper and Ribbon in Printer.....	62
	Inserting the Paper Roll.....	62
	Fitting the Ribbon.....	62
3.8	Four-Wheel Drive.....	63
	Activating Four-Wheel Drive.....	63
	Forward Speed.....	63
	Operation of Four-Wheel Drive.....	64
	Service.....	64
3.9	Other Optional Extra.....	65
	Reversing Camera.....	65
	Electrically Adjustable Rearview Mirrors.....	65
4	Operation, FIELDSTAR®.....	67
4.1	Safety Precautions.....	69
4.2	FIELDSTAR®.....	71
	Menu Structure and Operation.....	71
	Operating FIELDSTAR® on Terminal.....	72

Contents

	Operating the Terminal by Remote Control in the Multi-Function Lever	73
	Contrast and Brightness Control	74
	Cleaning the Terminal	74
	Data Cards	75
	FIELDSTAR® Menu Structure	75
4.3	Harvest Menu	77
4.4	Main Menu	81
4.5	Monitoring	83
	Shaft Speeds	83
	Engine Monitoring/Alarm	83
	Engine Safety Alarm	84
	Information	84
	Shaft Speeds	85
4.6	Harvesting Data	87
	Accumulated Machine Data	87
	Trip Data and Field Data	87
	4.6.1 Data Logging in General	88
	4.6.2 Using Data Logging	90
	Creating a New Field Job	90
	Starting a Job	92
	Field Map for a Job	94
	Data Logging Messages	96
	4.6.3 Data Logging Setup	98
	Marker Setup	99
	Selecting Position Data	100
	Setup of Logging Rate	100
	4.6.4 Using Markers	101
4.7	Operator Manual	103
	Harvest Settings	103
	Routine Servicing	103
	FIELDSTAR®	103
4.8	Diagnostics	105
	Electric Diagnostics	105
	Yield Meter	105
	System Information	105
	System Setup	105
	Programming Computer	105
	Control	105
	GPS Information	106
	DGPS Information	107
	Programming	109
	Diagnosis	109
	Screen Calibration (Touch Calibration)	109
4.9	Coding	111
	Clock Adjustment	111
	Language	111
	Area Measuring	112
	Table Calibration	113
	Returns Volume	113
	Grain loss monitor	113
	Concave Calibration	114
	Constant Flow	114
	Wheel Track and Auto Level Combine	114
	Coding of Electrical Straw Deflectors	115
	Straw chopper vibrations	115
	Lead Time and Lag Time	116
	Calibration of Actuator for Electrical Sieves	117
4.10	Settings	119
	Harvest Settings	119
	Table Settings	122

<https://www.ebooklibonline.com>

Hello dear friend!

Thank you very much for reading.

Enter the link into your browser.

The full manual is available for immediate download.

<https://www.ebooklibonline.com>

Contents

Machine Settings,	124
4.11 Returns Volume Monitor.	126
Coding,	126
4.12 Grain Loss Monitoring	127
Sensors	127
Adjustment of Grain Loss Sensors,	127
4.13 Shaft Alarm Calibration.	128
4.14 Straw Chopper Vibrations.	129
Coding	129
4.15 Yield Meter.	130
4.15.1 Yield meter (Isotopic)	130
Measuring Principle	130
Mass Flow Measuring	130
Yield Meter Status	131
Using the Yield Meter.	131
Calibration of Yield Meter	131
4.15.2 Micro-Trak Yield Meter	132
Measuring Principle	132
Zero Point for Micro-Trak Yield Meter	132
Calibration of Micro-Trak Yield Meter	133
Slope Compensation for Micro-Trak Yield Meter	133
4.15.3 Yield Meter Calibration.	134
4.16 Moisture Meter	136
Continuous Moisture Measuring	136
Measuring Principle	136
Using the Moisture Meter	136
Cleaning the Moisture Meter	137
Calibration of Moisture Meter.	138
4.17 Cutting Height Control	140
Cutting Height Control Setting and Operation	140
Coding of Table.	141
4.18 Field Pressure Control.	142
Field Pressure Control Setting and Operation	142
4.19 Auto Level Table	144
Bleeding	144
Coding of Auto Level Table.	145
Calibration of Table Angle.	145
4.20 Operation of Auto Level Table	146
Manual Control	146
Levelling at Turns	146
4.21 Interaction Between Table Controls.	147
4.22 Checking and Adjusting the Ground Sensors.	148
4.23 Constant Flow	149
Start-up and Adjustment of Constant Flow	149
Constant Flow Engagement.	151
5 Operation, Auto Level Combine	153
5.1 Safety Precautions.	155
Safety System	156
5.2 Combinations.	157
Selecting Combination	157
5.3 Auto Level Combine	158
Manual Control of Auto Level Combine	158
5.4 Auto Level Combine/Table	159
Combine	159
Transport,	159
Auto Level table	160
5.5 Calibration of Auto Level Combine	161

Contents

Errors during Calibration	162
5.6 Coding of Auto Level Table	162
Zero Cutting Height	162
5.7 Attachment/Removal of Table	163
5.8 Operation of Auto Level Combine/Auto Level Table	164
Combinations	164
Priority of Hydraulic Functions	165
5.9 Safety System, Auto Level	166
Automatic Control of the Tilt Sensor Function	166
Safety System	166
Hose Breach Protection for Auto Level Hydraulics	167
5.10 Troubleshooting	168
Mechanical Connections	168
Checking Sensor Adjustment and Inclinator	168
Machine Not Levelling Correctly	169
5.11 Servicing and User Tips	170
Retrofit of New FIELDSTAR® Auto Level Job Computer and Sensors	170
Unintentional Use of Manual Keys in Automatic Mode	170
Diagnostics - Auto Level Combine Functions and Sensors	170
6 Engine	171
6.1 Safety Precautions	173
6.2 Engine Types	174
6.3 Air-Intake	174
Filter System	174
6.4 Cooling System	175
Rotary Screen and Dust Aspirator	175
Coolers	175
Coolant	176
Checking the Fan Belt Tension	176
6.5 Fuel System	177
Filter change	178
6.6 Engine Oil/Change	179
Oil and Filter Change	179
6.7 Cleaning the Engine Compartment	179
6.8 Electronic Engine Management	180
6.9 Engine Trouble Shooting	180
EEM3 Electronic Engine Management - Failure Codes (Self-Diagnosis)	180
7 Cutting Tables	183
7.1 Safety Precautions	185
7.2 Attachment of Table, Standard and Auto Level	186
Alignment of Table	187
7.3 Removal of Table	188
Table Trailer	188
Attachment of Combine and Trailer	189
Supports	189
7.4 Reel	190
Reel Adjustment Up/Down, Fore/Aft	190
Bleeding	190
Reel Rotation	191
Reel Tine Bars	191
Adjustment of Reel in the Table	191
7.5 Knife	192
Knife and Knife Drive	192
Knife Adjustment	192
7.6 Feeding	193

Contents

Table Auger	193
Cut-Off Strip	193
Replacement of Feathering Fingers	193
Auger Flight Extensions, 20-22-25-30' Tables	193
Reversing	194
7.7 Transmission	195
PowerFlow Table, Knife Drive and Table Auger	195
Slip Clutch for Table Auger	195
7.8 PowerFlow Table	196
Inspection and Start-Up of PowerFlow Belts	196
Adjustment of Belts	196
Front Scrapers	197
Rear Scrapers and Adjustment of Bearing Housings	197
Table Bottom	197
Cleaning	198
7.9 Crop Lifters	198
Using Crop Lifters	198
7.10 Vertical Knives, Rape Auger and Straw Dividers	199
Vertical Knife	199
Mounting of Vertical Knife	199
Rape Auger	199
Torpedo Divider and Straw Divider Bow	200
Mounting of Straw Dividers	200
Adjustment of Torpedo Divider	200
7.11 Fixed Table Auger Fingers	201
Using Fixed Table Auger Fingers	201
High Table Sides	201
7.12 Main crop elevator	202
Crop Elevator Chain	202
Transmission for Table	202
Stone Trap	202
Initial Adjustment of Cutting Height Indication	203
8 Operation of Machine and Cutting Table	205
8.1 Safety Precautions	207
8.2 Operation of Table	208
Table Height and Table Automatic Control	208
Cutting Height Control	209
Field Pressure Control	209
Preset Cutting Height	210
Auto Level Table	210
Table Engagement - Emergency Stop	211
Slip Clutch	211
8.3 Threshing Unit Transmission	212
Threshing Unit Engagement	212
Cylinder Variator	212
Turning Tool for Cylinder	213
8.4 Concave Setting, Electrically Adjustable	214
Operation of Concave	214
Concave Setting	214
8.5 Threshing	216
Concave Filler Plates	216
Straw Walkers	216
Rear Beater Curtain	217
8.6 Straw Chopper and Spreader Hood	218
Straw chopper	218
Adjustment of Spreader Hood	219
Counter Knives and Cross Bar	220
Replacement of Knives	221

Contents

8.7	Fanning Mill and Sieves	222
	Fanning Mill	222
	Shaker Shoe	222
	Shaker Shoe with Electrical Sieves	223
	Manual Adjustment of Sieves	223
	Cleaning of Sieves and Main Grain Pan	224
	Cleaning the Sieves	224
	Shaker Shoe Light	225
	Special Sieves	226
8.8	Internal Grain Transport	227
	Auger Housing/Elevators	227
	Returns Thresher	227
	Tank Filling Auger	228
	Grain Tank	229
	Unloading Auger	230
	Unloading Auger Clutch	230
	Unloading Tube	231
8.9	Rotary Separator	232
	Change of Rotor Revolutions	232
	Concave Setting	232
8.10	Straw hood	233
	Alarm switch for straw hood blocked	233
	Blockage in straw hood	233
8.11	Chaff Spreader	234
	Setting	234
8.12	Maize Threshing	235
	Attachment of Maize Header	235
	Area measuring	235
	Main crop elevator	236
	Concave/Cylinder/Stone Trap	236
	Concave/Initial Settings	236
	Threshing cylinder	236
	Rotary separator	237
	Shaker Shoe	237
	Machine with Electrical Sieves	237
	Straw walkers	237
	Bottom Auger Cover Plate	238
	Scrapers	238
	Rear Beater Curtain	238
	Straw chopper	238
8.13	Suggested Harvest Settings	239
8.14	Threshing	240
9	Transmissions	241
9.1	Safety Precautions	243
9.2	Adjustment of Transmissions	244
	General	244
	Threshing Unit Clutch	244
	Hydrostatic Transmission	244
9.3	Transmissions	245
	Rear Beater	245
	Main Crop Elevator and Table	245
	Straw chopper	245
	Threshing cylinder	246
	Unloading Auger	246
	Shaker Shoe and Chaff Spreader Counter Drive, and Straw Walker Drive	247
	Filling and Returns System Countershaft	248
	Returns Elevator and Returns Thresher	248
	Tank Filling Elevator and Tank Filling Auger	249

Contents

Dust aspirator	249
Rotary screen	250
Fanning Mill	251
Rotary Separator	251
Alternator and Fan	251
Air-conditioning	252
9.4 Transmission Diagram, Left-Hand Side	254
9.5 Transmission Diagram, Right-Hand Side	256
10 Hydraulics	259
10.1 Safety Precautions	261
10.2 Hydraulic System, Standard Combine	262
Hydrostatic Transmission	262
10.3 Hydraulic System, Four-Wheel Drive	263
Hydrostatic Transmission	263
10.4 Oil Change	264
Draining Oil	264
Refilling Oil	264
10.5 Filter Change	265
Return Oil Filter	265
Storage of Hydraulic System	265
10.6 Auxiliary Hydraulics	266
Functions and Auxiliary Hydraulics	266
Reel Adjustment Fore/Aft - Up/down	266
10.7 Hydraulics Diagram, Standard Combine	268
10.8 Hydraulics Diagram, Auto Level Combine	270
10.9 Hydraulics Diagram for Chaff Spreader	272
11 Maintenance	273
11.1 Safety Precautions	275
11.2 Undercarriage	277
Wheel Nut Torques	277
11.3 Tyre Pressure	278
11.4 Lubrication Chart	280
Daily/10 Hours (Red)	280
50 hours (blue)	280
100 hours (yellow)	280
200 hours (white)	281
11.4.1 Lubrication Chart	282
11.4.2 Lubrication Points, Auto Level Combine	284
11.5 Lubricants and Operating Fluids	285
11.6 Maintenance Required	286
11.7 Gear Oil Change	288
Gearbox	288
Final Drives	288
11.8 Air-Conditioning	289
Diagram for air-conditioning	289
Maintenance	289
11.9 Cleaning and Off-Season Storage	290
Cleaning	290
Off-season storage	291
Storage of Engine, Fuel System and Hydraulic System	292
Periodical Start-Up	292
Removal of Main Crop Elevator	293
Removal of Elevator Chains	293
After Off-Season Storage	293
11.10 Adjustment of Brakes	294

Contents

Adjustment of Foot Brakes, Disc Brakes	294
Adjustment of Parking Brake, Drum Brake	294
11.11 Dealer Servicing Schedule for FENDT Combine Range.	295
12 Electrical System	301
12.1 Safety Precautions	303
12.2 Electrical System	304
Charging System	304
Electric Boxes and Main Switch	304
12.3 External 12V connectors	305
12.4 Electro-Hydraulic System	307
Hydraulic safety	307
12.5 Key to Signatures for Wiring Harness	308
Wire Codes	308
Component Codes	308
12.6 Position of Connectors in Electric Box	309
12.7 Fuses and Relays, Electric Box and Cab	310
12.8 Key to Symbols	312
12.9 Fuses, Alphabetical	313
12.10 Fuse Ratings	314
12.11 W-Connecting Points	315
12.12 Diagrams survey	316
12.13 Diagrams	319
13 Specifications	365
13.1 Dimensions and Specifications	365
14 Index	369

1. General Information

Contents

1.1	Appropriate Use.....	11
1.2	Preface	12
1.3	Product Identification	13
1.4	Sectional Drawing and Parts Identification	14

1. General Information

1. General Information

1.1 Appropriate Use



Appropriate use:

This self-propelled combine harvester is manufactured exclusively for usual agricultural purposes (appropriate use).

Any other use is considered as being contrary to the appropriate use. AGCO declines all liability in cases of physical damage or injuries resulting from non-appropriate use. The risk lies exclusively with the user.

The conformity and strict adherence to the operating, maintenance and repair requirements specified by AGCO are also essential factors for appropriate use.

This self-propelled combine harvester may be used, serviced and repaired only by personnel having full knowledge of its specific features and who are aware of the danger involved and the applicable safety rules (prevention of accidents).

It is the responsibility of the owner/user to ensure that prescribed safety precautions and other general technical, health and safety and road-safety rules are observed.

AGCO disclaims all liability to any claim resulting from the fitting of non-approved parts or accessories or unauthorised modification or alteration.

Customers are strongly recommended to contact an AGCO dealer in the event of after-sale problems and for any adjustments that may be necessary.

In accordance with the Company's policy of continuous improvements to its products, alterations in the specifications may be made at any time without notice.

The Company accepts no responsibility for any discrepancies which may occur between the specifications of its machines and the descriptions thereof contained in its publications.

This machine has been designed and produced in conformity with the machine directive 98/37/EF. An EU declaration of conformity is supplied with the machine.

This machine has been tested according to the

EEC directive 77/311/EEC and ISO 5131-1982

Noise level: FENDT 8300 RS = 78 dB (A)

Noise level: FENDT 8350 RS = 78 dB (A)



Suggest:

For more complete manuals. Please go to the home page.

<https://www.ebooklibonline.com>

If the above button click is invalid. Please download this document first, and then click the above link to download the complete manual.

Thank you so much for reading

1. General Information

1.2 Preface

This Manual

The purpose of this manual is to enable the owner/operator to handle and maintain the combine efficiently. Time spent in becoming familiar with the Operator's Manual now will save time in the field.

Wide variations in operation conditions make it impossible for the Company to make comprehensive or definite statements in its publications concerning performance and the use of its machines, or to accept liability for any damage which may result from errors or omissions.

The specifications and illustrations contained in this manual pertain to combines manufactured for specific countries. Due to differing laws and requirements in various countries, some apparent discrepancies may result between any particular combine and those depicted in this manual. Some accessories and optional equipment appearing in this manual are not necessarily available in all territories.

AGCO service

During the warranty period, all maintenance and repair work must be carried out by the AGCO dealer who will carefully carry out detailed checks of the progress and performance of the new combine.

To obtain best results from an AGCO combine, it is important to continue regular servicing and periodical inspection after the warranty has expired. All major overhaul work on the combine must be carried out by a local AGCO dealer; an experienced technician will detect any problems which may arise between two overhauls.

Mechanical staff regularly follow training courses to update their knowledge of the product, maintenance and repair techniques and the use of special modern tools and equipment for troubleshooting. They receive regular Service Bulletins and have access to all the workshop manuals and technical publications required to carry out repairs or maintenance meeting the quality standards required by AGCO.

Warning concerning spare parts

Parts other than original AGCO parts are likely to be of lower quality. AGCO disclaims all liability in the event of loss or damage arising as a result of such parts being fitted. The manufacturer's warranty may also become void, if such parts are fitted during the normal warranty period.

Warranty, pre-delivery check and installation

The Company, when selling new goods to its Distributors, gives a warranty which, subject to certain conditions, guarantees that the goods are free from defects in material and workmanship. The Company's Distributors and Dealers are required to give the benefit of a similar warranty to the first retail purchaser of all new goods supplied by the Company, and users should inquire of the Distributor or Dealer from whom they purchase as to the terms of the warranty made available to them.

Before delivering a new combine to the Customer's premises, it is the responsibility of the Distributor to conduct a pre-delivery check of the machine. This consists of a series of detailed inspections, adjustments and functional checks, which should ensure that when received by the Customer the combine is ready to start work immediately.

Upon delivery the Distributor is required to instruct the Customer in the basic principles and operating procedures of the combine. This is termed Combine Installation, which should include instruction on controls and instruments, field settings, maintenance requirements, safety precautions and winter storage, and should preferably be undertaken in the presence of all who will be concerned with the operation and maintenance of the machine.

This manual is published for World wide distribution, and the availability of equipment shown either as basic or accessory varies according to the territory in which the combine is to be used. Details of equipment available in your area can be obtained from your AGCO Distributor/Dealer.

1. General Information

1.3 Product Identification

Always quote combine model and serial number in any communication to your Distributor/Dealer.

Keep this manual safely for convenient reference.

Combine model: FENDT _____

Serial number: _____

Table serial number: _____

Engine type: _____

Serial number: _____

Owner's name: _____

Address: _____

Installation date: _____

Dealer's name: _____

Address: _____



Fig. 1



Fig. 2

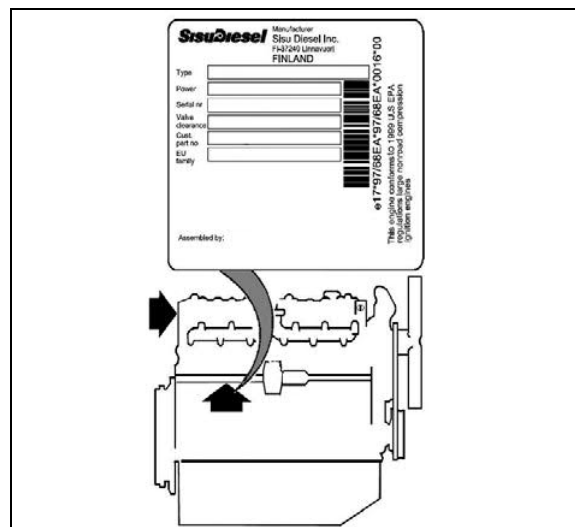


Fig. 3

<https://www.ebooklibonline.com>

Hello dear friend!

Thank you very much for reading.

Enter the link into your browser.

The full manual is available for immediate download.

<https://www.ebooklibonline.com>