



---

# ENGINE REPAIR MANUAL

---

**667TA/EEG**

**667TA/EEC**

**667TA/EBF**

**667TA/EED**

**667TA/EBJ**

**667TA/EDJ**

## ENGINE REPAIR MANUAL

---

---

CNH America LLC reserves the right to make improvements in design or changes in specifications at any time without incurring any obligation to install them on units previously sold.

All data given in this publication is subject to production variations. Dimensions and weights are only approximate. Illustrations do not necessarily show products in standard condition. For exact information about any particular product, please consult your Dealer

Revision History			
Issue	Issue Date	Applicable Machine	Remarks
First Edition	11-2006	667TA/EEG 667TA/EEC 667TA/EBF 667TA/EED 667TA/EBJ 667TA/EDJ	87519803 NA

**ENGINE REPAIR MANUAL****TABLE OF CONTENTS**

## CHAPTER 1

**DIAGNOSTICS**

TABLE OF CONTENTS .....	1-1
CNH- EST DIAGNOSTIC TOOL .....	1-3
TROUBLESHOOTING .....	1-4

## CHAPTER 2

**667TA ENGINE OVERHAUL**

TABLE OF CONTENTS .....	2-1
ENGINES .....	2-5
CODING OF SOURCE ENGINES .....	2-6
ENGINE PROPERTIES .....	2-6
GENERAL ENGINE FEATURES .....	2-7
CRANK GEAR COMPONENTS AND CYLINDER ASSEMBLY .....	2-9
VALVE GEAR - CYLINDER ASSEMBLY .....	2-12
TORQUE SPECIFICATIONS .....	2-14
SPECIAL TOOLS .....	2-16
667TA ENGINES .....	2-17
DESCRIPTION OF MAIN ENGINE COMPONENTS .....	2-18
EGR EXHAUST GAS RECIRCULATION SYSTEM .....	2-22
ENGINE LUBRICATION .....	2-30
ENGINE COOLING .....	2-35
HIGH PRESSURE ELECTRONIC INJECTION SYSTEM (COMMON RAIL) .....	2-37
EDC7UC31 -ELECTRONIC CONTROL UNIT OPERATION .....	2-38
FUEL SUPPLY SYSTEM .....	2-40
COMMON RAIL .....	2-50
COMMON RAIL PRESSURE RELIEF VALVE .....	2-51
ELECTRO-INJECTOR .....	2-52
LOCATION OF THE MAIN ELECTRICAL COMPONENTS .....	2-55
CHECKING THE FUEL SYSTEM .....	2-67
ENGINE OVERHAUL ON THE BENCH .....	2-72
CHECKS AND SPECIFICATIONS ON ENGINE CRANKCASE .....	2-82
CRANKSHAFT .....	2-87
ENGINE FLYWHEEL .....	2-102
CYLINDER HEAD .....	2-107
VALVES .....	2-108
VALVE GUIDE .....	2-109
VALVE SEATS .....	2-110
VALVE SPRINGS .....	2-112
CYLINDER HEAD .....	2-112
RODS AND TAPPETS .....	2-115
CHAPTER 3	
<b>CHARGING AND START-UP</b>	
TABLE OF CONTENTS .....	3-1
STARTER MOTOR .....	3-3
ALTERNATOR .....	3-6

**<https://www.ebooklibonline.com>**

Hello dear friend!

Thank you very much for reading.

Enter the link into your browser.

The full manual is available for immediate download.

**<https://www.ebooklibonline.com>**

**CHAPTER 1**

**667TA**

**TIER III**

**DIAGNOSTICS**

ENGINE REPAIR MANUAL  
CHAPTER 1 - DIAGNOSTICS

---

---

CNH America LLC reserves the right to make improvements in design or changes in specifications at any time without incurring any obligation to install them on units previously sold.

All data given in this publication is subject to production variations. Dimensions and weights are only approximate. Illustrations do not necessarily show products in standard condition. For exact information about any particular product, please consult your Dealer

Revision History			
Issue	Issue Date	Applicable Machines	Remarks
First Edition	11-2006	667TA/EEG 667TA/EEC 667TA/EBF 667TA/EED 667TA/EBJ 667TA/EDJ	87519803 NA

**CHAPTER 1**  
**DIAGNOSTICS**  
**TABLE OF CONTENTS**

CNH- EST DIAGNOSTIC TOOL ..... 1-3

TROUBLESHOOTING ..... 1-4

    Engine Won't Start ..... 1-4

    Engine Overheats ..... 1-5

    Engine Lacks Power And Runs Erratically ..... 1-6

    Engine Exhaust Smoke Black Or Dark Grey ..... 1-7

    Engine Exhaust Smoke Grey (Verging On White) ..... 1-7

    Engine Exhaust Smoke Light Blue ..... 1-7

    Engine Knocks Irregularly ..... 1-8

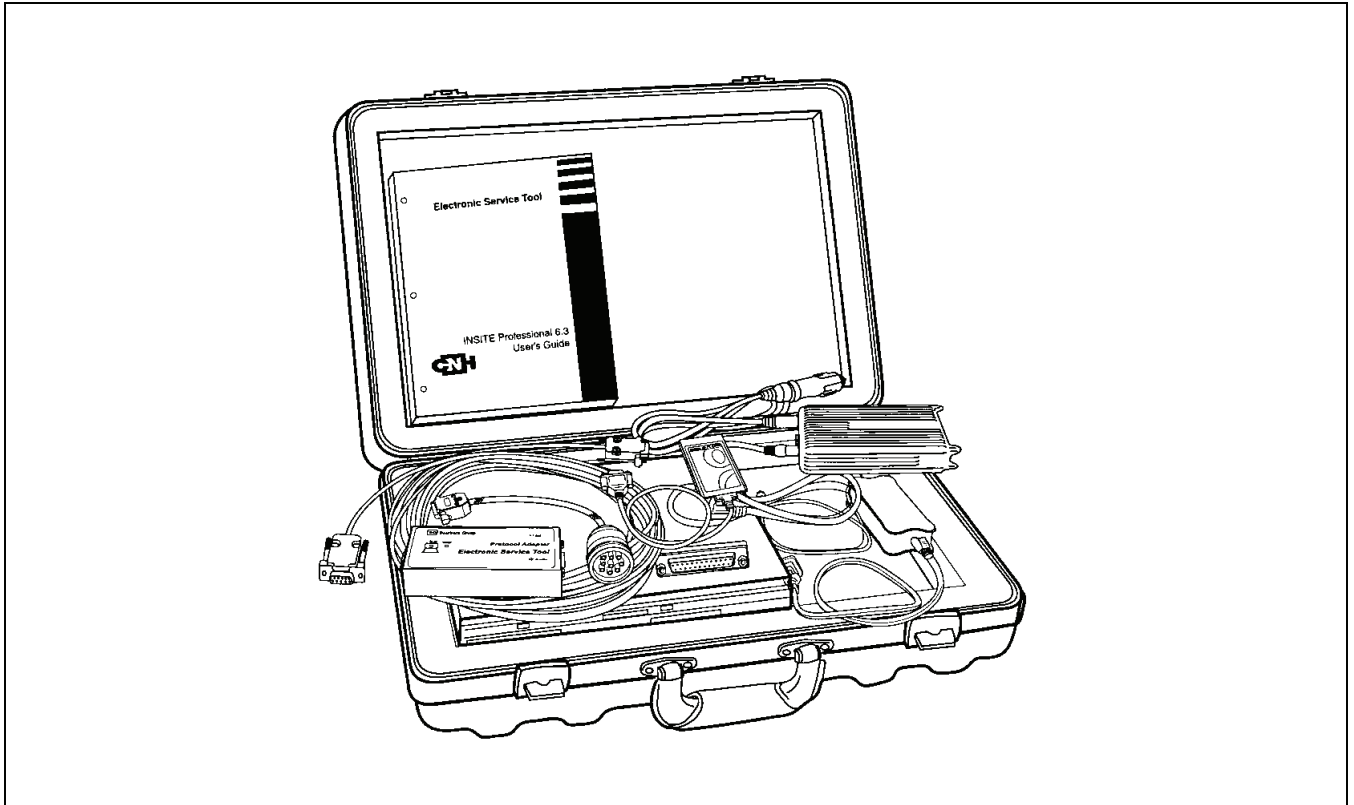
    Engine Stops ..... 1-9

    Excessive Or Insufficient Oil Pressure ..... 1-9

    Excessive Fuel Consumption ..... 1-9

## NOTES

## CNH- EST DIAGNOSTIC TOOL



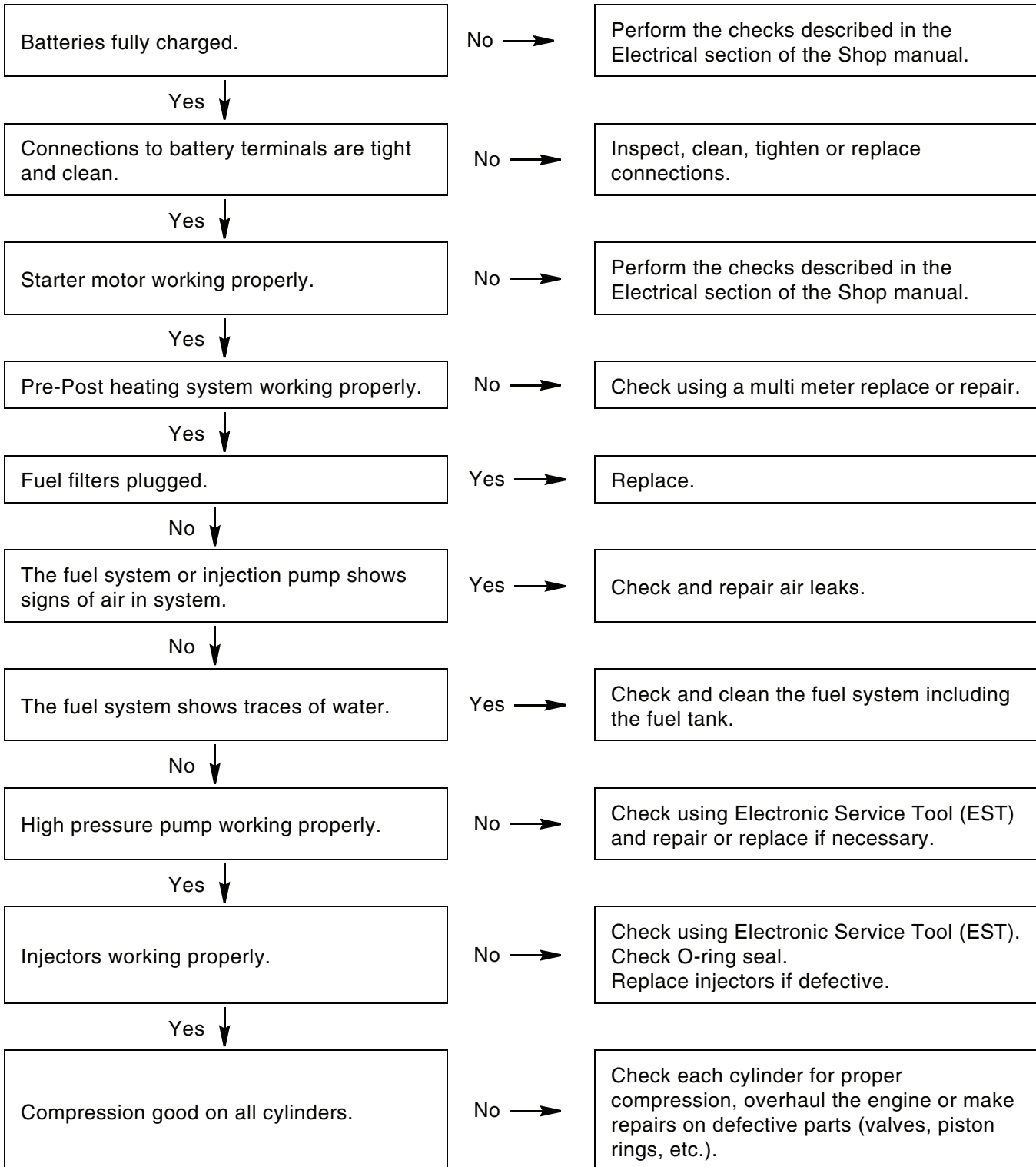
BS06K009

Figure 1-1

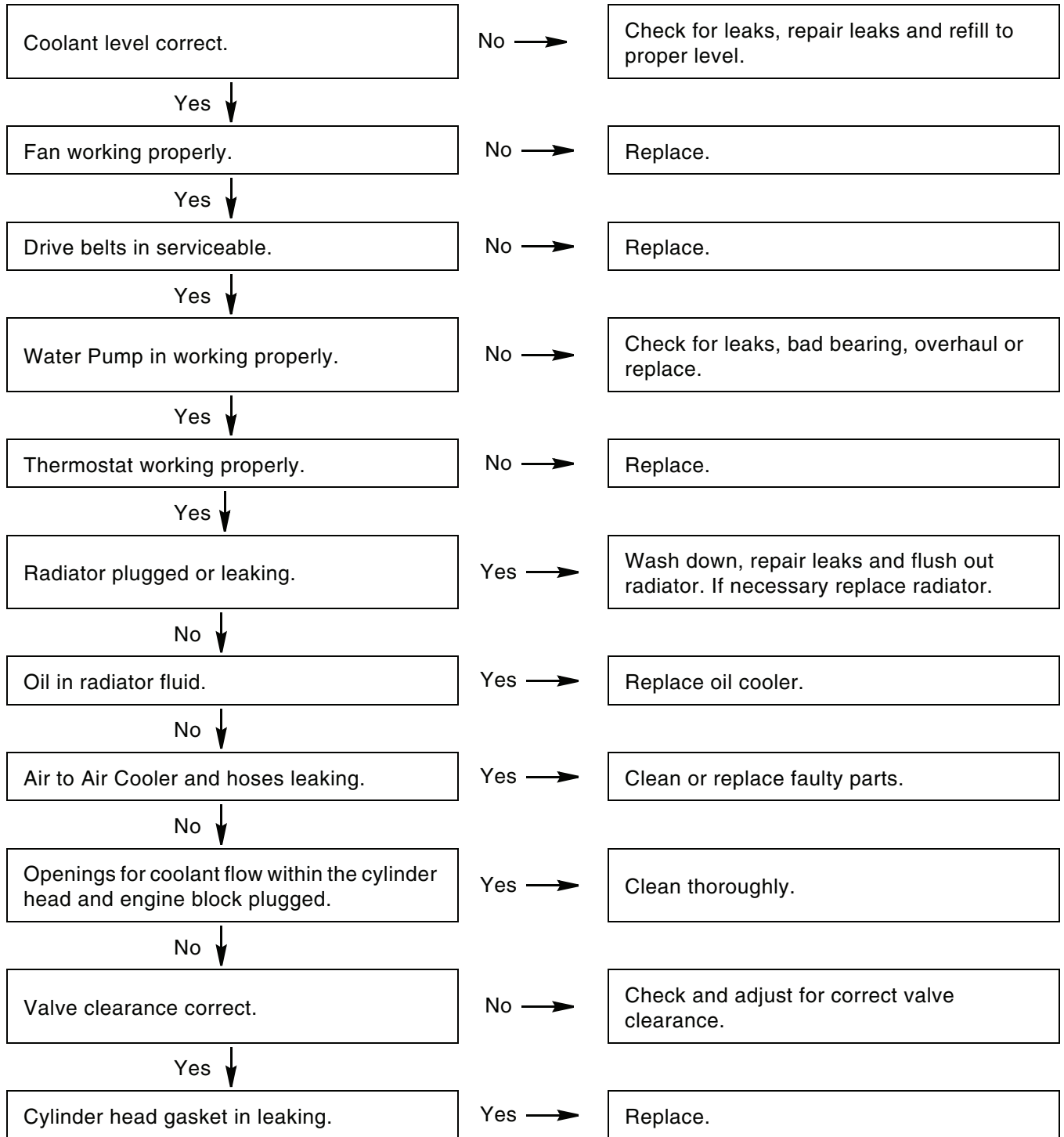
The EST system allows diagnoses on machines by detecting the operating parameters of electronic control components (control units, sensors etc.) and check flow rates, pressures and temperatures. It is also capable of reading fault codes on the engine. To help with troubleshooting the engine failure mode.

## TROUBLESHOOTING

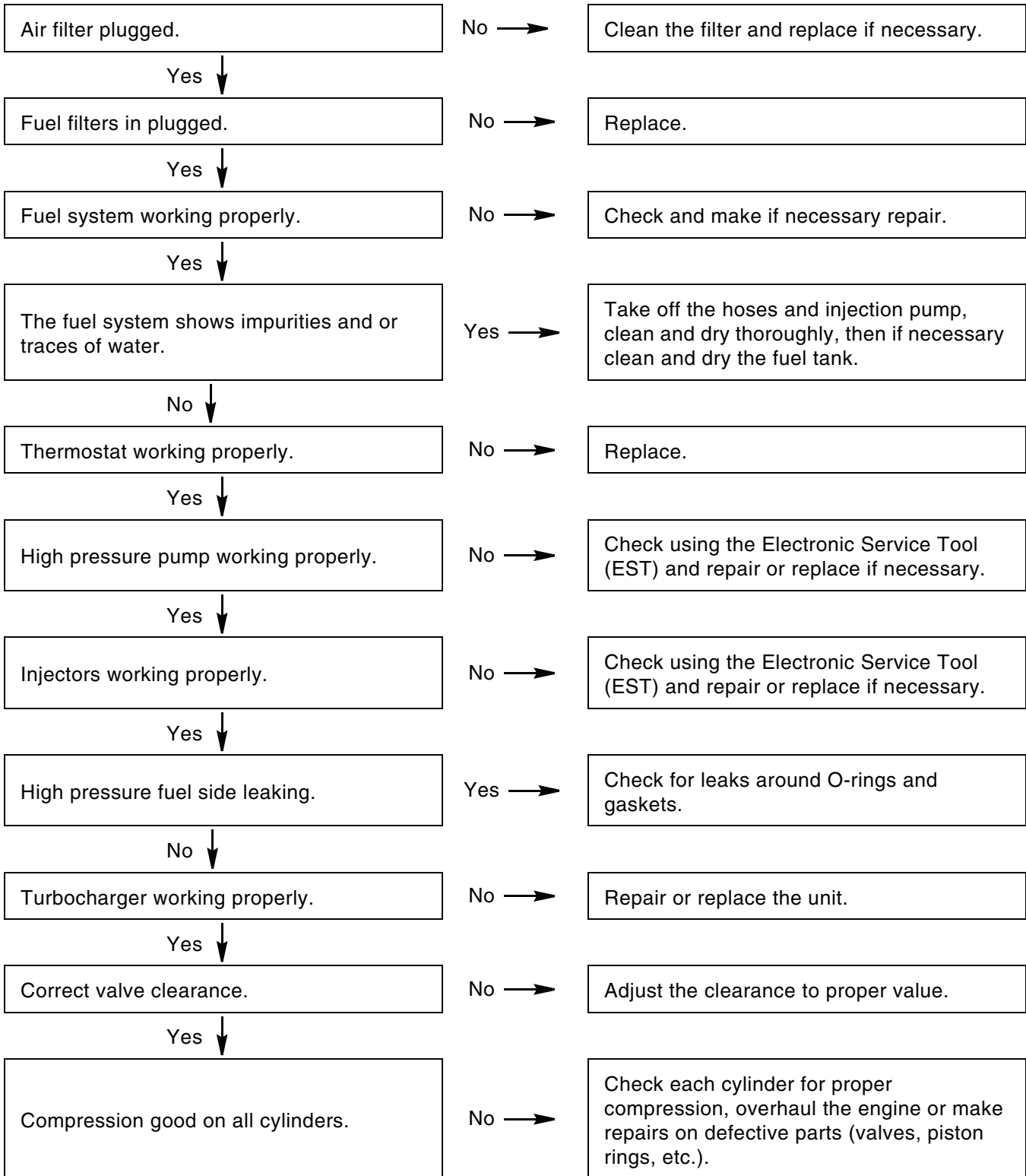
### ENGINE WON'T START



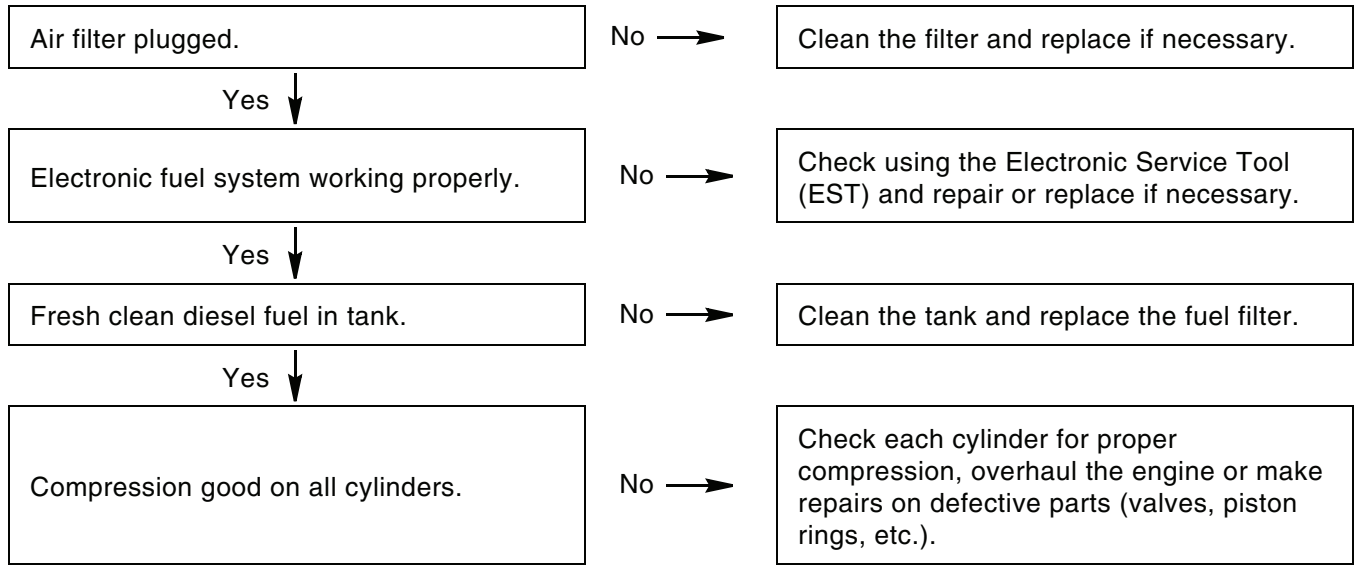
**ENGINE OVERHEATS**



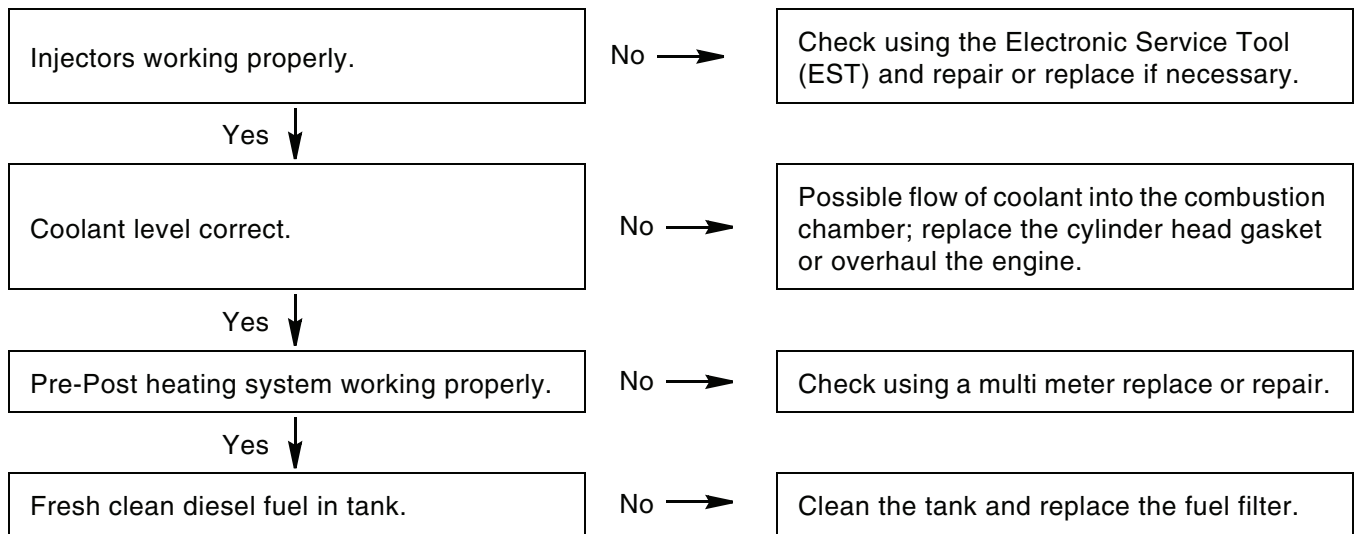
**ENGINE LACKS POWER AND RUNS ERRATICALLY**



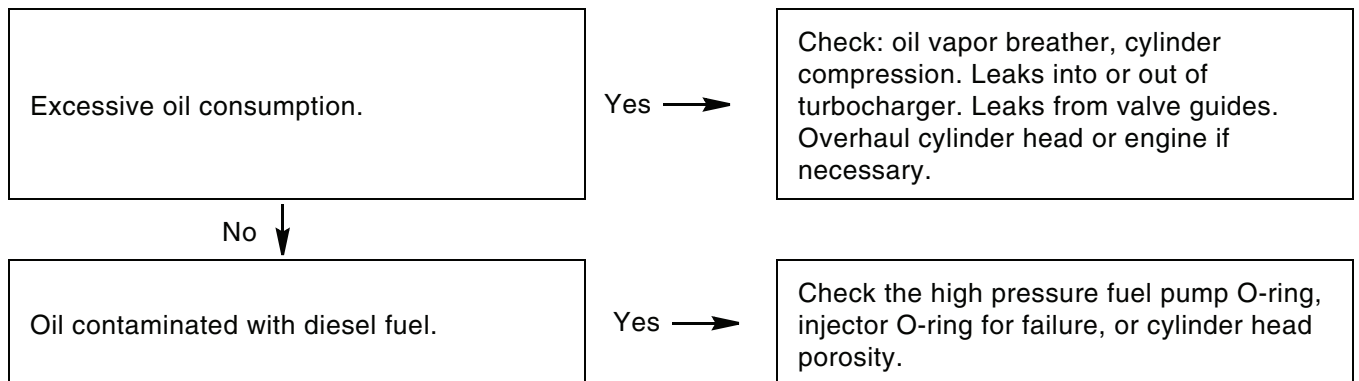
**ENGINE EXHAUST SMOKE BLACK OR DARK GREY**



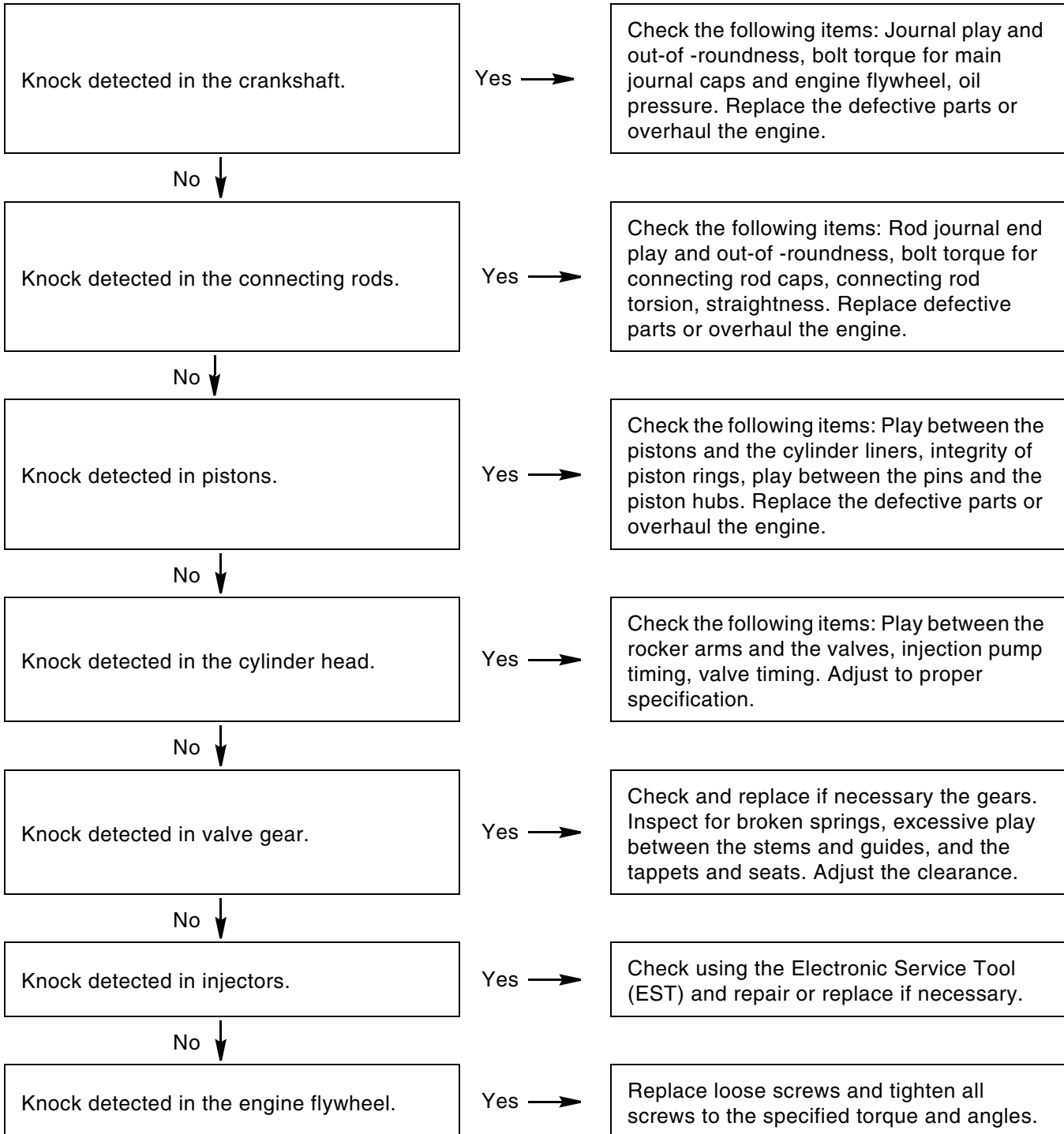
**ENGINE EXHAUST SMOKE GREY (VERGING ON WHITE)**



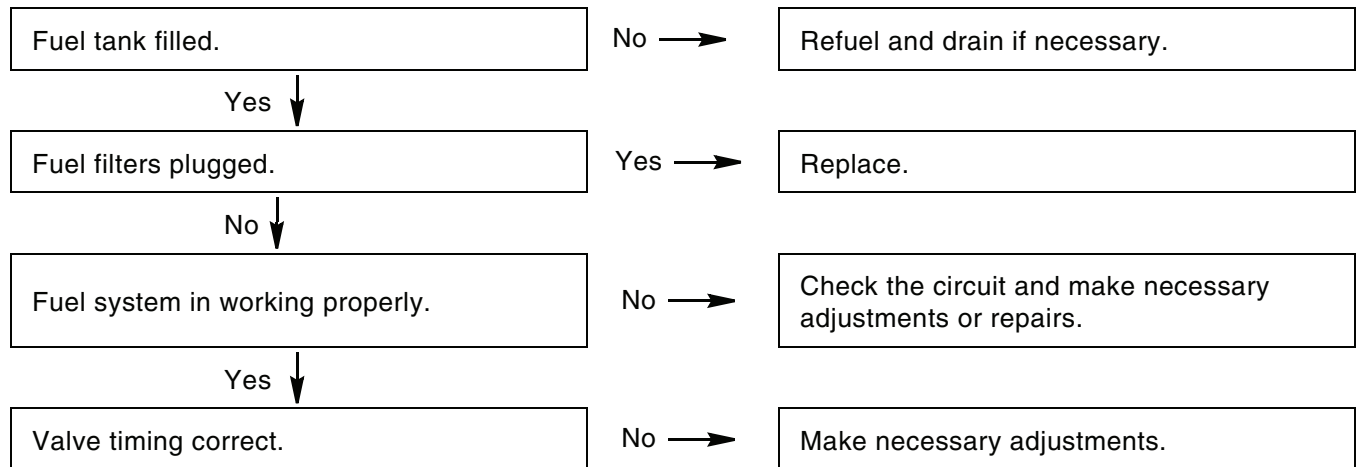
**ENGINE EXHAUST SMOKE LIGHT BLUE**



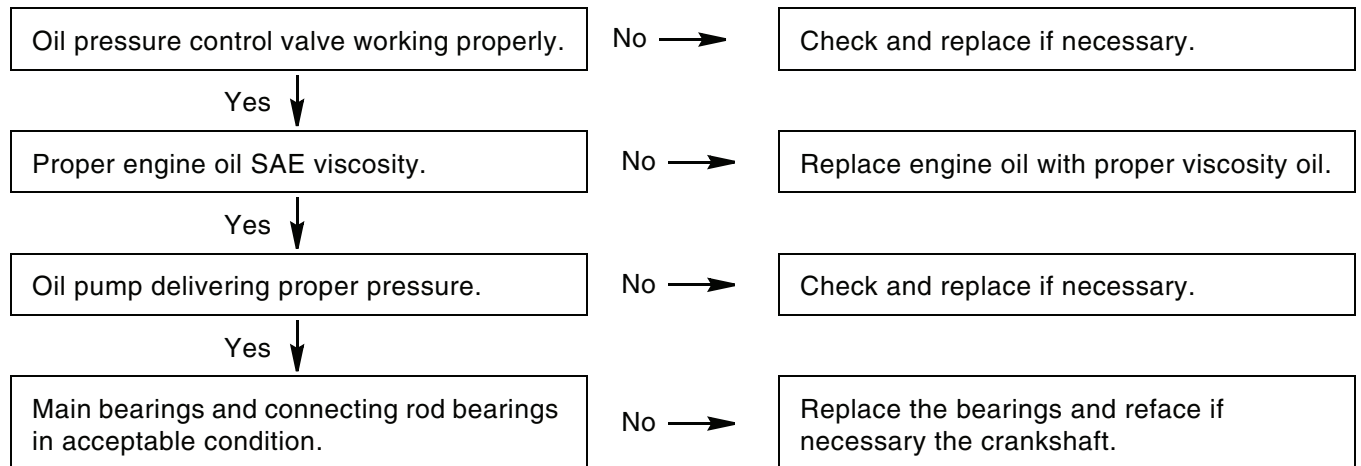
**ENGINE KNOCKS IRREGULARLY**



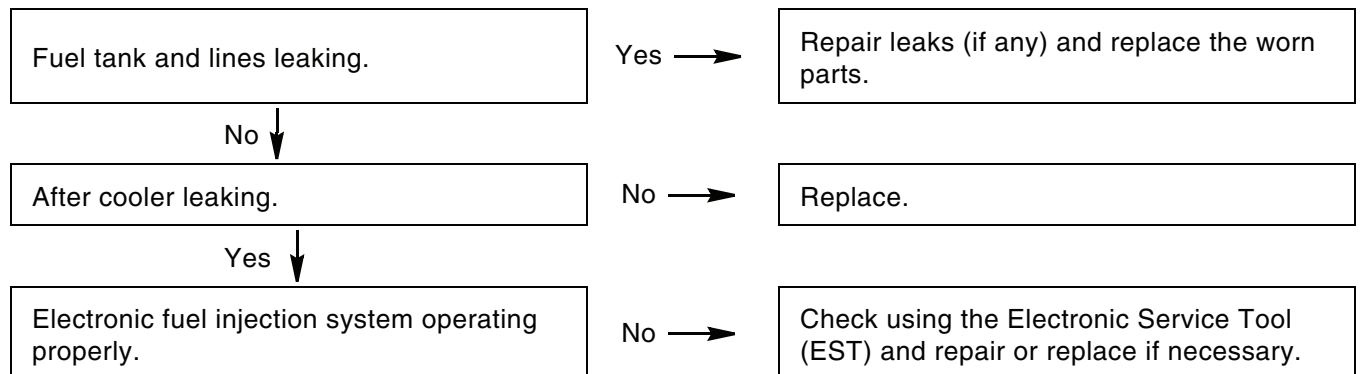
### ENGINE STOPS



### EXCESSIVE OR INSUFFICIENT OIL PRESSURE



### EXCESSIVE FUEL CONSUMPTION



## NOTES

**CHAPTER 2**

**667TA**

**TIER III**

**667TA ENGINE OVERHAUL**



**Suggest:**

**For more complete manuals. Please go to the home page.**

**<https://www.ebooklibonline.com>**

**If the above button click is invalid. Please download this document first, and then click the above link to download the complete manual.**

**Thank you so much for reading**

ENGINE REPAIR MANUAL  
CHAPTER 2 - 667TA ENGINE OVERHAUL

---

---

CNH America LLC reserves the right to make improvements in design or changes in specifications at any time without incurring any obligation to install them on units previously sold.

All data given in this publication is subject to production variations. Dimensions and weights are only approximate. Illustrations do not necessarily show products in standard condition. For exact information about any particular product, please consult your Dealer

Revision History			
Issue	Issue Date	Applicable Machines	Remarks
First Edition	11-2006	667TA/EEG 667TA/EEC 667TA/EBF 667TA/EED 667TA/EBJ 667TA/EDJ	87519803 NA

**CHAPTER 2**  
**667TA ENGINE OVERHAUL**  
**TABLE OF CONTENTS**

ENGINES .....	2-5
CODING OF SOURCE ENGINES .....	2-6
ENGINE PROPERTIES .....	2-6
GENERAL ENGINE FEATURES .....	2-7
CRANK GEAR COMPONENTS AND CYLINDER ASSEMBLY .....	2-9
VALVE GEAR - CYLINDER ASSEMBLY .....	2-12
TORQUE SPECIFICATIONS .....	2-14
SPECIAL TOOLS .....	2-16
667TA ENGINES .....	2-17
DESCRIPTION OF MAIN ENGINE COMPONENTS .....	2-18
Engine Block .....	2-18
Crankshaft .....	2-19
Crankshaft Oil Seals .....	2-19
Connecting Rods .....	2-20
Pistons .....	2-21
Camshaft .....	2-22
EGR EXHAUST GAS RECIRCULATION SYSTEM .....	2-22
Valve Control .....	2-23
Cylinder Head Engines: 667TA/EBF - 667TA/EBD - 667TA/EED .....	2-24
Cylinder Head Engines: 667TA/EEG - 667TA/EEC .....	2-25
Cylinder Head Engine: 667TA/EDJ .....	2-26
Valves and Valve Seats .....	2-27
Valve Bridges .....	2-27
Engine Head Machining .....	2-28
Engine Flywheel .....	2-28
Accessory Equipment Drive .....	2-29
ENGINE LUBRICATION .....	2-30
Oil Cooler .....	2-31
Oil Pressure Control Valve .....	2-31
By-pass Valve .....	2-31
Oil Pump .....	2-32
Oil Pan (Sump) Engines: 667TA/EEG- 667TA/EEC- 667TA/EBF- 667TA/EED- 667TA/EDJ .....	2-32
Oil Pan (Sump) Engines: 667TA/EED- 667TA/EBD .....	2-33
Engine Oil Vapor Recirculation .....	2-34
Blow-by Recirculation .....	2-34
ENGINE COOLING .....	2-35
Water Pump .....	2-36
HIGH PRESSURE ELECTRONIC INJECTION SYSTEM (COMMON RAIL) .....	2-37
EDC7UC31 -ELECTRONIC CONTROL UNIT OPERATION .....	2-38
Engine Preheating Element Control .....	2-38
Phase Recognition .....	2-38
Injection Control .....	2-38
Injection Pressure Closed Loop Control .....	2-38
Pilot and Main Injection Advance Control .....	2-38

**<https://www.ebooklibonline.com>**

Hello dear friend!

Thank you very much for reading.

Enter the link into your browser.

The full manual is available for immediate download.

**<https://www.ebooklibonline.com>**