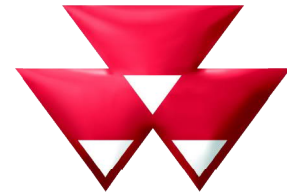


**Operator's Manual**



**MASSEY FERGUSON**

# **MF 8700 - Operation**

## **Efficient and Exclusive versions**



**Beauvais**  
**AGCO S.A.S. - 41 avenue Blaise Pascal - 60000**  
**Beauvais - France - RC B562 104 539**  
**© AGCO 2016**  
**Original Operator's Manual**

**June 2016**  
**ACT0026450**  
**EAME**  
**English**

# MF 8700 - Operation

<b>1 Tractor identification</b>	<b>11</b>
<b>1.1 Locating serial numbers</b>	<b>13</b>
1.1.1 Locating serial numbers	13
<b>1.2 Your tractor identification details</b>	<b>15</b>
1.2.1 Your tractor identification details	15
<b>2 Safety instructions and safety points - Warranty</b>	<b>17</b>
<b>2.1 Introduction</b>	<b>19</b>
2.1.1 Introduction - Safety instructions	19
<b>2.2 Safety — Symbols and terms</b>	<b>21</b>
2.2.1 Safety — Symbols and terms	21
<b>2.3 Safety decals and instructions</b>	<b>22</b>
2.3.1 Checking and replacing the safety decals and instructions	22
2.3.2 Presentation and location of the safety decals and instructions	23
<b>2.4 General safety instructions</b>	<b>27</b>
2.4.1 Awareness of the safety instructions and symbols	27
2.4.2 Operator familiarity in the use of the tractor	27
2.4.3 Filling the fuel tank	28
2.4.4 Mounting and dismounting the operator's seat	28
2.4.5 Mandatory procedure before dismounting the tractor	28
<b>2.5 Special instructions</b>	<b>29</b>
2.5.1 Specific recommendations for agricultural and forestry tractors	29
<b>2.6 Special safety instructions for preparing the tractor for use</b>	<b>31</b>
2.6.1 Protective clothing	31
2.6.2 Activated carbon filter information	31
2.6.3 Safety devices and items	34
2.6.4 Checking the tractor	34
<b>2.7 Specific safety instructions for starting the tractor</b>	<b>36</b>
2.7.1 Protection of persons other than the operator	36
2.7.2 Start up safely	36
2.7.3 Starting the tractor with jump start cables	37
2.7.4 Checks to be carried out after start-up	38
<b>2.8 Specific safety instructions for using the tractor</b>	<b>39</b>
2.8.1 General instructions	39
2.8.2 Protection of persons other than the operator	40
2.8.3 Overturning	40
2.8.4 Tractor towing	43
2.8.5 Regulatory data on maximum permitted trailed weights	43
2.8.6 Road use	45
2.8.7 Parking brake	47
2.8.8 Emergency hand brake (on models fitted with the ParkLock option)	47
2.8.9 Power take-off	47
2.8.10 Implements	48
2.8.11 Front-end loader	51
<b>2.9 Specific safety instructions for servicing the tractor</b>	<b>52</b>
2.9.1 Pollution warning to observe when servicing the tractor	52
2.9.2 General instructions	52
2.9.3 Handling instructions	53
2.9.4 Special instructions for cleaning the tractor	55
<b>2.10 Protective structures</b>	<b>56</b>

2.10.1	Protective structures - Use and accreditation	56
2.10.2	Cab	56
2.10.3	Seat belt	56
2.10.4	Instructor seat	57
<b>2.11</b>	<b>Warranty</b>	<b>58</b>
2.11.1	General	58
2.11.2	Pre-delivery inspection and commissioning on the user's premises	58
2.11.3	Warranty procedure	58
2.11.4	Procedure to follow if changing region	58
2.11.5	Servicing during and after the warranty period	59
<b>3</b>	<b>Usage</b>	<b>61</b>
<b>3.1</b>	<b>Operator environment</b>	<b>65</b>
3.1.1	Steering console	65
3.1.2	Instrument panel	66
3.1.3	Control unit	72
3.1.4	Pedals	73
3.1.5	Steering wheel	73
3.1.6	Operator presence detector	74
3.1.7	Automatic adjustment pneumatic seat	76
3.1.8	Maximum Evolution pneumatic seat	82
3.1.9	Instructor seat	88
3.1.10	Right-hand console	89
3.1.11	Command Control Armrest	89
3.1.12	Right-hand pillar	91
3.1.13	Left-hand console	92
3.1.14	Upper console	92
3.1.15	Manual air conditioning	94
3.1.16	Automatic air conditioning	100
3.1.17	Additional heater	107
3.1.18	Accessories sockets	107
3.1.19	Emergency exits	109
3.1.20	High-visibility roof hatch	109
3.1.21	Sun visor	110
<b>3.2</b>	<b>Control screens Setup and Information Screen on the instrument panel</b>	<b>111</b>
3.2.1	Using the Setup and Information Screen	111
3.2.2	Setup and Information screens	112
<b>3.3</b>	<b>Body</b>	<b>123</b>
3.3.1	Opening the bonnet	123
3.3.2	Adjusting the external rear-view mirrors	123
3.3.2.1	Positioning and extending the arms	123
3.3.2.2	Rear-view mirror with manual adjustment	124
3.3.2.3	Rear-view mirror with electric adjustment	124
3.3.3	Adjusting the left-hand step	125
<b>3.4</b>	<b>Engine</b>	<b>127</b>
3.4.1	Running-in	127
3.4.2	Filling with fuel	127
3.4.3	Start switch	127
3.4.4	Start-up	128
3.4.5	Starting the engine in cold weather	128
3.4.6	Stopping the engine	129
3.4.7	Engine speed	129
3.4.8	Storing engine speeds	131
<b>3.5</b>	<b>Transmission</b>	<b>133</b>
3.5.1	Presentation of the different driving modes	133
3.5.2	Clutch function	133

**<https://www.ebooklibonline.com>**

Hello dear friend!

Thank you very much for reading.

Enter the link into your browser.

The full manual is available for immediate download.

**<https://www.ebooklibonline.com>**

3.5.3	PowerShuttle	135
3.5.4	Setting start-up speeds	137
3.5.4.1	Start speeds	137
3.5.5	Storage of forward speeds	138
3.5.6	Lever mode	139
3.5.7	Pedal mode	141
3.5.7.1	Pedal Mode in winter conditions (on frozen or snow-covered ground)	143
3.5.8	Self-propelled mode	144
3.5.9	Road mode (Hare)/Field mode (Tortoise)	145
3.5.10	Changing forward speed	146
3.5.11	Tractor towing	147
3.5.11.1	Towing procedure:	147
3.5.12	Tractor limp home mode	149
3.5.13	Forward speed calibration	152
<b>3.6</b>	<b>Brakes</b>	<b>154</b>
3.6.1	Brake pedals	154
3.6.2	Hydraulic trailer brake	154
3.6.3	Pneumatic trailer brake	155
3.6.4	Electromechanically controlled brake on the steering column (ParkLock)	156
3.6.4.1	ParkLock engaged	156
3.6.4.2	Disengagement of the ParkLock	157
3.6.4.3	Manual disengagement of the ParkLock	157
3.6.5	Emergency hand brake (on models fitted with the ParkLock option)	158
<b>3.7</b>	<b>Steering</b>	<b>159</b>
3.7.1	Steering	159
<b>3.8</b>	<b>Front axle</b>	<b>162</b>
3.8.1	Four-wheel drive front axle	162
3.8.2	Suspended front axle	163
3.8.3	Permissible load on the front axle	165
<b>3.9</b>	<b>Differential lock</b>	<b>169</b>
3.9.1	Differential lock	169
<b>3.10</b>	<b>Power take-off</b>	<b>171</b>
3.10.1	Front power take-off	171
3.10.2	Rear power take-off (PTO)	172
3.10.2.1	Selecting the power take-off speed	172
3.10.2.2	Engaging PTO in manual mode:	173
3.10.2.3	Engaging PTO in automatic mode:	173
3.10.3	Economy PTO	174
3.10.4	Changing the flanged shaft	175
3.10.4.1	Changing the shaft	175
3.10.5	PTO external control	177
3.10.6	Power take-off electronic controls	177
3.10.7	Power take-off protection	178
<b>3.11</b>	<b>Linkage</b>	<b>180</b>
3.11.1	General	180
3.11.2	Rear linkage electronic controls	180
3.11.3	Rear linkage operation	182
3.11.4	Rear linkage external controls	187
3.11.5	Front linkage	188
3.11.6	Top link	192
3.11.7	Bottom links	194
3.11.8	Lift rods	196
3.11.9	Stabilizers	197
3.11.9.1	Stabilizers with manual telescopic adjustment	197
3.11.9.2	Automatic stabilizers	199
3.11.10	Ball joint support	200
<b>3.12</b>	<b>Towing equipment</b>	<b>201</b>

3.12.1	General	201
3.12.2	Swinging drawbar	203
3.12.2.1	Fitting the swinging drawbar	204
3.12.3	Ball coupling	205
3.12.3.1	Fitting the K80 ball coupling	205
3.12.3.2	Hitching the trailer	206
3.12.3.3	Adjusting the ball coupling	207
3.12.4	Drawbar with stud	207
3.12.4.1	Fitting the drawbar with stud	207
3.12.4.2	Hitching the trailer	209
3.12.5	4-wheel trailer clevis hitch	209
3.12.6	Pick-up hitch	210
3.12.6.1	Lowering the hook	210
3.12.6.2	Lifting the hook	212
3.12.6.3	Fitting the swinging drawbar	213
<b>3.13</b>	<b>Auxiliary hydraulics</b>	<b>215</b>
3.13.1	General	215
3.13.2	Description of the hydraulic couplers (Load Sensing)	215
3.13.3	Use of hydraulic couplers on Closed Center system (Load Sensing)	217
3.13.4	Auxiliary hydraulics locking/unlocking	223
3.13.5	Description and use of the cab controls	224
3.13.6	Description and use of the external controls	228
3.13.7	Setting flow rates and time delay	228
<b>3.14</b>	<b>Front-end loader function</b>	<b>230</b>
3.14.1	Front-end loader	230
3.14.2	Layout of components	230
3.14.3	Using the electric joystick of the front-end loader	231
3.14.3.1	Joystick functions for the front-end loader	231
3.14.3.2	Floating position	231
3.14.3.3	Front-end loader flow rate control	232
3.14.3.4	3rd and 4th functions	232
3.14.3.5	Arm suspension	233
3.14.3.6	Locking and unlocking accessories	233
<b>3.15</b>	<b>Lighting</b>	<b>234</b>
3.15.1	Main lighting control module	234
3.15.2	Work lights module	235
3.15.3	Direction indicators	236
<b>3.16</b>	<b>Suspended cab</b>	<b>240</b>
3.16.1	Suspended cab	240
<b>3.17</b>	<b>Front tires and track widths</b>	<b>241</b>
3.17.1	Wheel studs	241
3.17.2	Installation points of the axle stands	241
3.17.3	Adjusting the front wheel track width	242
3.17.4	Adjusting the 4WD front axle stops	245
3.17.4.1	Oscillation stops	245
3.17.4.2	Adjusting the steering angle	245
3.17.4.3	Toe-in check	246
3.17.4.4	Adjusting the front fenders Shoe side adjustment on the front axle	246
3.17.4.5	Adjusting the front fenders Adjusting the height of the support on the shoe	246
3.17.4.6	Adjusting the front fenders Adjusting the lateral position of the fender on the support (two adjustments are possible)	247
3.17.5	Tires	247
3.17.6	Tire pressures	247
<b>3.18</b>	<b>Rear tires and track widths</b>	<b>248</b>
3.18.1	Wheel studs	248
3.18.2	Wheel chock(s) (optional)	248

---

3.18.2.1 Using the wheel chock . . . . .	248
3.18.3 Installation points of the axle stands . . . . .	249
3.18.4 Rear track width with short straight shafts . . . . .	250
3.18.5 Rear track width with long straight shafts . . . . .	253
3.18.6 Assembly configuration for an external width of 2550 mm . . . . .	256
3.18.7 Adjusting the rear wheel track width . . . . .	257
3.18.7.1 Adjustment of wheel position on the straight shaft . . . . .	257
3.18.7.2 Adjustment of wheel position on the straight shaft . . . . .	258
<b>3.19 Dual wheels . . . . .</b>	<b>259</b>
3.19.1 Dual wheels . . . . .	259
3.19.2 Installation points of the axle stands . . . . .	260
3.19.3 Dual rear wheel track width with short straight shafts . . . . .	261
3.19.4 Dual rear wheel track width with long straight shafts . . . . .	266
<b>3.20 Ballast . . . . .</b>	<b>276</b>
3.20.1 Liquid ballasting . . . . .	276
3.20.2 Front-end weight . . . . .	276



# 1. Tractor identification

<b>1.1 Locating serial numbers</b> .....	13
1.1.1 Locating serial numbers .....	13
<b>1.2 Your tractor identification details</b> .....	15
1.2.1 Your tractor identification details .....	15



## 1.1 Locating serial numbers

---

### 1.1.1 Locating serial numbers

---

**IMPORTANT:**

*Please quote the serial number of your tractor in all correspondence with your dealer or agent.*

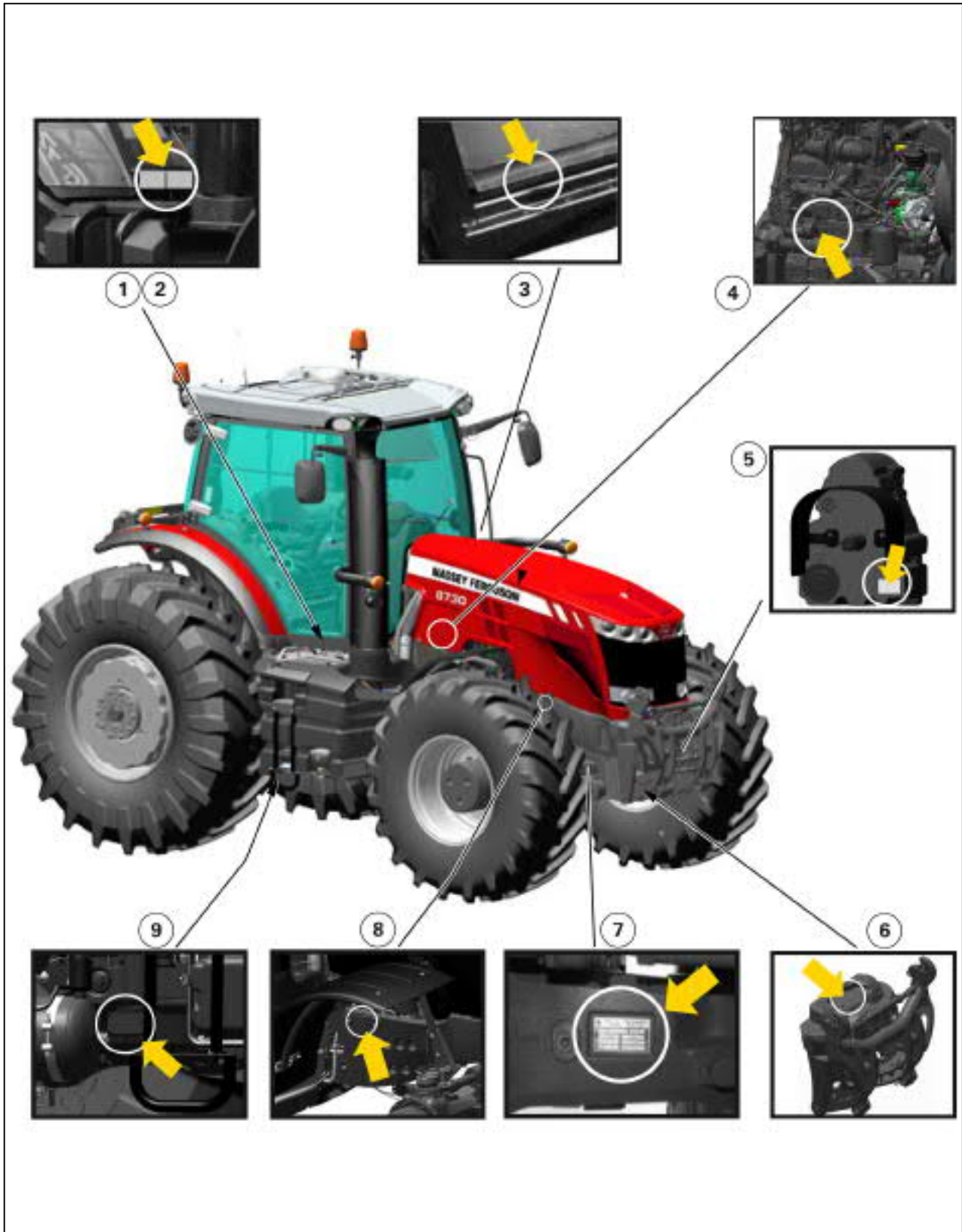


Fig. 1

- |   |  |
|---|--|
| (1) Name plate with serial number             | (6) Front linkage serial number        |
| (2) Homologation plate (according to country) | (7) Front axle serial number           |
| (3) Cab serial number                         | (8) Chassis number                     |
| (4) AGCO Power engine serial number           | (9) Dyna-VT transmission serial number |
| (5) Front PTO serial number                   |  |





## 2. Safety instructions and safety points - Warranty

<b>2.1 Introduction</b>	19
2.1.1 Introduction - Safety instructions	19
<b>2.2 Safety — Symbols and terms</b>	21
2.2.1 Safety — Symbols and terms	21
<b>2.3 Safety decals and instructions</b>	22
2.3.1 Checking and replacing the safety decals and instructions	22
2.3.2 Presentation and location of the safety decals and instructions	23
<b>2.4 General safety instructions</b>	27
2.4.1 Awareness of the safety instructions and symbols	27
2.4.2 Operator familiarity in the use of the tractor	27
2.4.3 Filling the fuel tank	28
2.4.4 Mounting and dismounting the operator's seat	28
2.4.5 Mandatory procedure before dismounting the tractor	28
<b>2.5 Special instructions</b>	29
2.5.1 Specific recommendations for agricultural and forestry tractors	29
<b>2.6 Special safety instructions for preparing the tractor for use</b>	31
2.6.1 Protective clothing	31
2.6.2 Activated carbon filter information	31
2.6.3 Safety devices and items	34
2.6.4 Checking the tractor	34
<b>2.7 Specific safety instructions for starting the tractor</b>	36
2.7.1 Protection of persons other than the operator	36
2.7.2 Start up safely	36
2.7.3 Starting the tractor with jump start cables	37
2.7.4 Checks to be carried out after start-up	38
<b>2.8 Specific safety instructions for using the tractor</b>	39
2.8.1 General instructions	39
2.8.2 Protection of persons other than the operator	40
2.8.3 Overturning	40
2.8.4 Tractor towing	43
2.8.5 Regulatory data on maximum permitted trailed weights	43
2.8.6 Road use	45
2.8.7 Parking brake	47
2.8.8 Emergency hand brake (on models fitted with the ParkLock option)	47
2.8.9 Power take-off	47
2.8.10 Implements	48
2.8.11 Front-end loader	51
<b>2.9 Specific safety instructions for servicing the tractor</b>	52
2.9.1 Pollution warning to observe when servicing the tractor	52
2.9.2 General instructions	52
2.9.3 Handling instructions	53
2.9.4 Special instructions for cleaning the tractor	55
<b>2.10 Protective structures</b>	56
2.10.1 Protective structures - Use and accreditation	56
2.10.2 Cab	56
2.10.3 Seat belt	56
2.10.4 Instructor seat	57

<b>2.11 Warranty</b> .....	<b>58</b>
2.11.1 General .....	58
2.11.2 Pre-delivery inspection and commissioning on the user's premises .....	58
2.11.3 Warranty procedure .....	58
2.11.4 Procedure to follow if changing region .....	58
2.11.5 Servicing during and after the warranty period .....	59

## 2.1 Introduction

### 2.1.1 Introduction - Safety instructions

#### Operator's Manual

**NOTE:** *This Operator's Manual is widely published and distributed and the availability of the attachments indicated, whether fitted to the basic tractor or as an accessory, may vary depending on the country or region in which the tractor is used. To find out which attachments are available in a given region, contact a Massey Ferguson dealer.*

The purpose of this manual is to enable the owner and the operator to operate the tractor appropriately under normal conditions of use. Providing they follow the instructions carefully, the tractor will give many years of service in the Massey Ferguson tradition.

Use for any other activity (particularly forestry work) is considered to be contrary to the intended use.

The commissioning of equipment by the Massey Ferguson dealer on the user's premises enables the dealer to ensure that these operating and service instructions are properly understood. Always consult the Massey Ferguson dealer if there is any part of this manual that you do not understand. It is important that these instructions are understood and followed.

This manual does not cover all operation and safety instructions relevant to the implements and accessories that may be fitted at the time of tractor delivery or later. It is essential that operators use and understand the Operator's Manuals relating to these implements and accessories.

**IMPORTANT:** *This manual must always be kept with the tractor. For extra copies, contact your Massey Ferguson dealer.*

This chapter in the Operator's Manual highlights certain basic safety-related situations that may be encountered during normal operation and servicing of the tractor and provides the information needed to handle these situations.

This chapter supplements any safety instructions given in other chapters of this manual.

It may be necessary to take additional precautions, depending on the implements and accessories used and the working conditions on-site or in the service area. Massey Ferguson can under no circumstances exercise direct control over the commissioning, operation, inspection, lubrication or servicing of the tractor. It is therefore YOUR responsibility to take suitable safety precautions in such areas.



**WARNING:**

**It is your responsibility to read and understand the instructions that appear in this chapter before using the tractor.**

**They must then be strictly adhered to throughout the working day.**

#### Servicing, spare parts, accessories and conditions of use

Daily servicing should become a routine, and a logbook of operating hours should be kept.

When spare parts are required, it is important to use only genuine Massey Ferguson parts. Massey Ferguson dealers supply genuine parts and can offer advice concerning their fitting and use. The use of lower quality parts may cause serious damage. Customers are advised only to purchase their spare parts from an approved Massey Ferguson dealer. In the same way, you must only use accessories specifically adapted to your tractor.

Owing to the considerable variation in operating conditions, it is not possible for the manufacturer to formulate complete or absolute assertions in its publications concerning the performance or operating methods of its machines or to accept liability for any loss or damage which may result from such assertions or possible errors or omissions.

If the tractor is to be used in abnormal conditions which could cause damage (use in deep water or in paddy fields for instance), you should consult your Massey Ferguson dealer to obtain special instructions to prevent the warranty from becoming void.

These tractors are designed only for usual farming activities (intended use). Use for any other activity (particularly forestry work) is considered to be contrary to the intended use.

Strict compliance with the repairs, service and operating conditions as specified by Massey Ferguson is also an essential component of the intended use.

**IMPORTANT:** *Massey Ferguson accepts no responsibility in the event of damage to equipment or personal injury resulting from improper use.*

The tractor must only be used, serviced and repaired by personnel who have full knowledge of its specific features and who are aware of the applicable safety measures (prevention of accidents).

Customers are strongly advised to contact a Massey Ferguson dealer in the event of after-sales problems and for any adjustments which may be necessary.

## 2.2 Safety – Symbols and terms

### 2.2.1 Safety – Symbols and terms

#### Signal



This safety alert symbol means **CAUTION! BE ALERT! YOUR SAFETY DEPENDS ON IT!**

The safety alert symbol identifies important safety notices on machines, safety signs, in instruction books or elsewhere. When you see this symbol, be alert to the risk of injury or death. Follow the instructions in the safety notice.

#### **SAFETY is paramount! Why?**

- ACCIDENTS DISABLE AND KILL
- ACCIDENTS ARE COSTLY
- ACCIDENTS CAN BE AVOIDED

#### Terms

The terms **DANGER**, **WARNING** and **CAUTION** are used with the safety alert symbol. It is essential to learn how to recognize these safety messages and to follow the recommended safety measures and instructions.



#### **DANGER:**

**indicates an imminently hazardous situation which, if not avoided, will result in DEATH or VERY SERIOUS INJURY.**



#### **WARNING:**

**indicates a potentially hazardous situation which, if not avoided, could result in DEATH or SERIOUS INJURY.**



#### **CAUTION:**

**indicates a potentially hazardous situation which, if not avoided, may result in MINOR or MODERATE INJURY.**

The terms **IMPORTANT** and **NOTE** are not directly related to personal safety, but are used to provide additional information and advice on the operation or maintenance of equipment.

**IMPORTANT:** *identifies specific instructions or procedures which, if not strictly applied, could damage or destroy the tractor, its equipment or the surrounding area.*

**NOTE:** *identifies points of particular interest for the most effective and suitable operation or repair.*



**Suggest:**

**For more complete manuals. Please go to the home page.**

**<https://www.ebooklibonline.com>**

**If the above button click is invalid. Please download this document first, and then click the above link to download the complete manual.**

**Thank you so much for reading**

---

## 2.3 Safety decals and instructions

---

### 2.3.1 Checking and replacing the safety decals and instructions

---



**WARNING:**

**Never remove or obscure the safety decals and instructions.**

Replace any safety decals and instructions that are illegible or missing. Replacement decals are available from the dealer in the event of loss or damage. If a second-hand tractor has been purchased, check that all safety and instruction decals are correct, legible and in the correct location: To do this, refer to the section on the presentation and location of decals.

### 2.3.2 Presentation and location of the safety decals and instructions

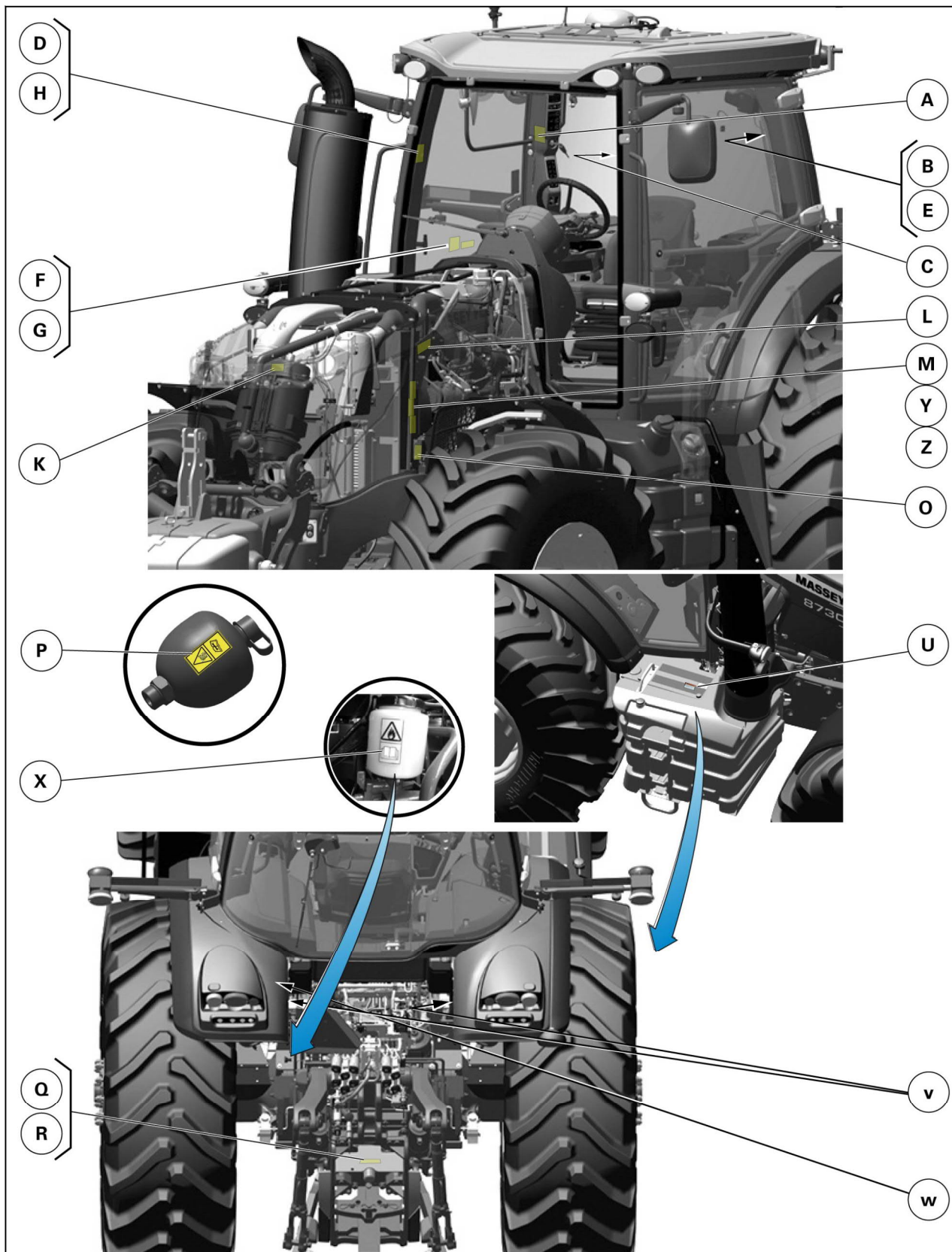


Fig. 1

**<https://www.ebooklibonline.com>**

Hello dear friend!

Thank you very much for reading.

Enter the link into your browser.

The full manual is available for immediate download.

**<https://www.ebooklibonline.com>**