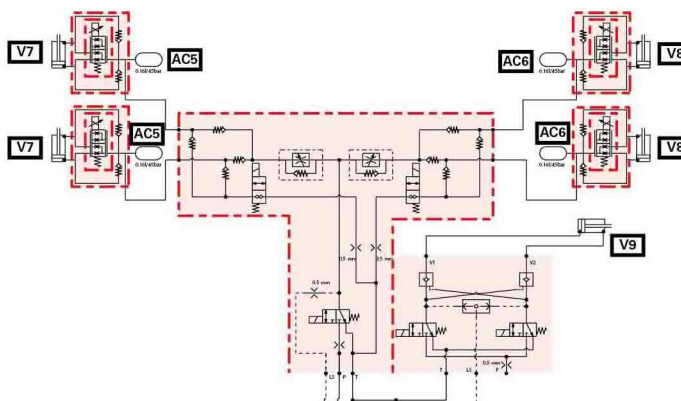
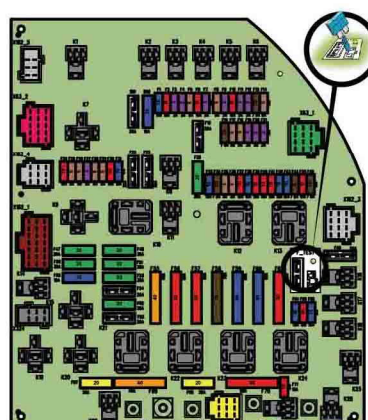


Technician Service Book - MF 7700 S series tractors

Schémas électriques et hydrauliques



Technician Service Book - MF 7700 S series tractors

1 General Information	1-1
1.1 General specifications	1-3
1.1.1 General specifications for MF 7714 S, MF 7715 S, MF 7716 S and MF 7718 S models	1-3
1.1.1.1 Models MF 7700 S Dyna-4	1-3
1.1.1.2 Models MF 7700 S Dyna-6	1-11
1.1.1.3 MF 7700 S Dyna-VT models	1-20
1.1.2 General specifications for MF 7720 S, MF 7722 S, MF 7724 S and MF 7726 S models	1-28
1.1.2.1 Models MF 7700 S Dyna-6	1-28
1.1.2.2 Models MF 7700 S Dyna-VT	1-39
1.2 Forward speeds	1-50
1.2.1 Forward speeds for MF 7714 S, MF 7715 S, MF 7716 S and MF 7718 S models ..	1-50
1.2.1.1 Forward speed at maximum speed with Dyna-4 40 kph transmission and 20.8R38 tires	1-50
1.2.1.2 Forward speed at maximum speed with Dyna-6 40 kph transmission and 20.8R38 tires	1-51
1.2.1.3 Forward speed at maximum speed with Dyna-6 50 kph transmission and 20.8R38 tires	1-53
1.2.1.4 Forward speed for all models with Dyna-VT transmission	1-54
1.2.2 Forward speeds for , MF 7720 S, MF 7722 S, MF 7724 S, and MF 7726 S models	1-55
1.2.2.1 Forward speed at maximum speed with Dyna-6 40 kph transmission: and 20.8R42 tires	1-55
1.2.2.2 Forward speed at maximum speed with Dyna-6 50 kph transmission: and 20.8R42 tires	1-57
1.2.2.3 Forward speed with Dyna-6 transmission, 40 kph and 50 kph with creeper speed option and 20.8R42 tires	1-59
1.2.2.4 Forward speed for all models with Dyna-VT transmission	1-60
1.3 Dimensions and weights	1-61
1.3.1 Dimensions and weights for MF 7714 S, MF 7715 S, MF 7716 S and MF 7718 S models	1-61
1.3.1.1 Dimensions and weights	1-61
1.3.2 Dimensions and weights for , MF 7720 S, MF 7722 S, MF 7724 S, and MF 7726 S models	1-64
1.3.2.1 Dimensions and weights	1-64
1.4 Attachment points	1-75
1.4.1 Attachment points for MF 7714 S, MF 7715 S, MF 7716 S and MF 7718 S models	1-75
1.4.1.1 Attachment points: Dyna-4/Dyna-6 models without front linkage	1-75
1.4.1.2 Attachment points: Dyna-4/Dyna-6 models with front linkage	1-76
1.4.1.3 Attachment points: Dyna-VT models without front linkage	1-78
1.4.1.4 Attachment points: Dyna-VT models with front linkage	1-79
1.4.2 Attachment points for , MF 7720 S, MF 7722 S, MF 7724 S and MF 7726 S models	1-81
1.4.2.1 Attachment points: Dyna-6 models without front linkage	1-81
1.4.2.2 Attachment points: Dyna-6 models with 4 t front linkage (Imperial: 4.4 US ton)	1-82
1.4.2.3 Attachment points: Dyna-VT models without front linkage	1-84

1.4.2.4 Attachment points: Dyna-VT models with 4 t front linkage (Imperial: 4.4 US ton)	1-85
1.5 capacities	1-87
1.5.1 Capacities for MF 7714 S, MF 7715 S, MF 7716 S and MF 7718 S models	1-87
1.5.1.1 capacities	1-87
1.5.2 Capacities for , MF 7720 S, MF 7722 S, MF 7724 S and MF 7726 S models	1-88
1.5.2.1 Capacities for models with a Tier 3/Stage IIIA engine	1-88
1.5.2.2 Capacities for models with a Tier 4F/Stage IV SCR Technology engine	1-89
1.5.3 Accumulator pressure and volume	1-91
1.6 Tightening torques, retaining compounds and sealing products	1-92
1.6.1 Retaining compounds and sealing products	1-92
1.6.2 Tightening torques for screws and nuts	1-93
1.6.3 Tightening torques for hydraulic unions	1-97
1.7 Units of measurement	1-101
1.7.1 Conversion table	1-101
2 Error codes	2-1
2.1 Error codes	2-3
2.1.1 General table of faults	2-3
2.1.2 Indicator light panel	2-6
2.1.3 Indication of faults	2-14
2.1.4 Description of error code format	2-17
2.1.5 Instrument panel error codes Dyna-VT	2-18
2.1.6 Instrument panel error codes Dyna-4/Dyna-6	2-20
2.1.7 AGCO Power Tier 3/Stage IIIA engine and Tier 4F/Stage IV SCR Technology engine error codes	2-21
2.1.8 Dyna-VT transmission error codes	2-36
2.1.9 Transmission error codes Dyna-4/Dyna-6	2-40
2.1.10 ParkLock error codes	2-42
2.1.11 ParkLock error codes	2-43
2.1.12 Front axle error codes Dyna-VT	2-44
2.1.13 Front axle error codes for Dyna-4/Dyna-6	2-44
2.1.14 Rear power take-off error codes Dyna-VT	2-45
2.1.15 Power take-off error codes Dyna-4/Dyna-6	2-47
2.1.16 Error codes for the high-pressure braking	2-47
2.1.17 Rear linkage error codes	2-48
2.1.18 Front power lift error codes	2-49
2.1.19 Armrest error codes	2-49
2.1.20 Hydraulic valve error codes	2-51
2.1.21 Air conditioning error codes	2-52
2.1.22 Error codes of the keypad in the pillar	2-54
2.1.23 Suspended cab error codes	2-54
3 Fuse box	3-1
3.1 Fuse box	3-3
3.1.1 Description of the main fuse box	3-3
3.1.2 Description of the secondary fuse box (depending on model)	3-21
3.1.3 Description of additional fuses and relays	3-24
3.1.4 Battery isolator	3-26
4 Electrical diagrams	4-1
4.1 Electrical diagrams	4-5
4.1.1 Identification of electrical diagrams	4-5
4.1.2 Identification of electrical connectors from X1 to X500	4-7
4.1.3 Identification of electrical connectors from X501 to X1000	4-19
4.1.4 Identification table for cable colors	4-29
4.1.5 Electrical diagrams	4-31

<https://www.ebooklibonline.com>

Hello dear friend!

Thank you very much for reading.

Enter the link into your browser.

The full manual is available for immediate download.

<https://www.ebooklibonline.com>

4.1.5.1	EFD00000_12 - Battery 12 V power supply points	4-31
4.1.5.2	EFD00000_13 - Battery earth points	4-32
4.1.5.3	EFD00100_17 - Dyna-VT 4-wheel drive	4-34
4.1.5.4	EFD00100_18 - Dyna-6 4-wheel drive	4-35
4.1.5.5	EFD00100_19 - Dyna-4 4-wheel drive	4-35
4.1.5.6	EFD00101_17 - Dyna-VT differential lock	4-36
4.1.5.7	EFD00101_18 - Dyna-6 differential lock	4-37
4.1.5.8	EFD00101_19 - Dyna-4 differential lock	4-38
4.1.5.9	EFD00111_41 - Dyna-VT transmission- 1/2	4-39
4.1.5.10	EFD00111_41 - Dyna-VT transmission- 2/2	4-40
4.1.5.11	EFD00111_42 - GTA1540 Dyna-6 transmission Efficient/Exclusive - 1/4	4-41
4.1.5.12	EFD00111_42 - GTA1540 Dyna-6 transmission Efficient/Exclusive - 2/4	4-42
4.1.5.13	EFD00111_42 - GTA1540 Dyna-6 transmission Essential - 3/4	4-43
4.1.5.14	EFD00111_42 - GTA1540 Dyna-6 transmission Essential - 4/4	4-44
4.1.5.15	EFD00111_43 - GTA2520 Dyna-6 Load Sensing transmission Essential - 1/4	4-45
4.1.5.16	EFD00111_43 - GTA2520 Dyna-6 Load Sensing transmission Essential - 2/4	4-46
4.1.5.17	EFD00111_43 - GTA2520 Dyna-6 Load Sensing transmission Efficient/Exclusive - 3/4	4-47
4.1.5.18	EFD00111_43 - GTA2520 Dyna-6 Load Sensing transmission Efficient/Exclusive - 4/4	4-48
4.1.5.19	EFD00111_44 - GTA2520 Dyna-6 Open Center transmission Essential - 1/4	4-49
4.1.5.20	EFD00111_44 - GTA2520 Dyna-6 Open Center transmission Essential - 2/4	4-50
4.1.5.21	EFD00111_44 - GTA2520 Dyna-6 Open Center transmission Efficient/Exclusive - 3/4	4-51
4.1.5.22	EFD00111_44 - GTA2520 Dyna-6 Open Center transmission Efficient/Exclusive - 4/4	4-52
4.1.5.23	EFD00111_45 - GTA2520 Dyna-4 Load Sensing transmission- 1/2	4-53
4.1.5.24	EFD00111_45 - GTA2520 Dyna-4 Load Sensing transmission- 2/2	4-54
4.1.5.25	EFD00113_7 - Lighter	4-55
4.1.5.26	EFD00114_30 - Radio	4-56
4.1.5.27	EFD00116_12 - Suspended cab	4-57
4.1.5.28	EFD00117_28 - Additional heater	4-58
4.1.5.29	EFD00117_39 - Automatic air conditioning	4-59
4.1.5.30	EFD00117_40 - Manual air conditioning for standard roof	4-60
4.1.5.31	EFD00117_41 - Manual air conditioning for high-visibility roof	4-61
4.1.5.32	EFD00118_9 - DOT Matrix	4-62
4.1.5.33	EFD00119_10 - Rear windscreen wiper	4-63
4.1.5.34	EFD00119_11 - Rear windscreen wiper for tractors with panoramic cab	4-64
4.1.5.35	EFD00120_12 - Front windscreen wiper	4-65
4.1.5.36	EFD00121_17 - Dyna-VT parking brake	4-66
4.1.5.37	EFD00121_18 - Dyna-6 parking brake	4-67
4.1.5.38	EFD00121_19 - Dyna-4 parking brake	4-68
4.1.5.39	EFD00122_8 - Dyna-VT fuel gage	4-69
4.1.5.40	EFD00122_9 - Dyna-4/Dyna-6 fuel gage	4-70
4.1.5.41	EFD00123 - C3000	4-71
4.1.5.42	EFD00123_24 - Datatronic CCD	4-72
4.1.5.43	EFD00124_10 - Dyna-VT ParkLock	4-73
4.1.5.44	EFD00124_11 - Dyna-4/Dyna-6 ParkLock	4-74
4.1.5.45	EFD00124_17 - Dyna-VT ParkLock	4-75
4.1.5.46	EFD00125_10 - Cab light	4-76
4.1.5.47	EFD00126_11 - Extreme cold weather heating with automatic air conditioning	4-77
4.1.5.48	EFD00126_12 - Extreme cold weather heating with manual air conditioning for tractors with standard roof	4-78

4.1.5.49	EFD00126_13 - Extreme cold weather heating with manual air conditioning for tractors with high-visibility roof	4-79
4.1.5.50	EFD00127_8 - Left-hand pillar 12 V socket	4-80
4.1.5.51	EFD00128_17 - EAME/ISO cab current socket	4-81
4.1.5.52	EFD00128_18 - NA/SAE cab current socket	4-82
4.1.5.53	EFD00128_20 - EAME/ISO cab current socket_1/2	4-83
4.1.5.54	EFD00128_20 - EAME/ISO cab current socket_2/2	4-84
4.1.5.55	EFD00128_21 - NA/SAE cab current socket_1/2	4-85
4.1.5.56	EFD00128_21 - NA/SAE cab current socket_2/2	4-86
4.1.5.57	EFD00129_13 - Diagnostics connector- 1/2	4-87
4.1.5.58	EFD00129_13 - Diagnostics connector- 2/2	4-88
4.1.5.59	EFD00130_5 - Dyna-VT radar	4-90
4.1.5.60	EFD00130_6 - Dyna-6 and Dyna-4 radar	4-90
4.1.5.61	EFD00131_48 - Dyna-6 CAN network Efficient/Exclusive - tractor	4-91
4.1.5.62	EFD00131_48 - Dyna-6 CAN network Efficient/Exclusive - engine	4-92
4.1.5.63	EFD00131_48 - Dyna-6 CAN network Efficient/Exclusive - linkage	4-93
4.1.5.64	EFD00131_48 - Dyna-6 CAN network Efficient/Exclusive - ISOBUS	4-94
4.1.5.65	EFD00131_48 - Dyna-6 CAN network Essential - tractor	4-95
4.1.5.66	EFD00131_48 - Dyna-6 CAN network Essential - engine	4-96
4.1.5.67	EFD00131_48 - Dyna-6 CAN network - AGCO Power	4-97
4.1.5.68	EFD00131_48 - Dyna-6 CAN network Essential - ISOBUS	4-98
4.1.5.69	EFD00131_49 - Dyna-VT CAN network - tractor	4-99
4.1.5.70	EFD00131_49 - Dyna-VT CAN network - linkage	4-100
4.1.5.71	EFD00131_49 - Dyna-VT CAN network - engine	4-101
4.1.5.72	EFD00131_49 - Dyna-VT CAN network - ISOBUS	4-102
4.1.5.73	EFD00131_49 - Dyna-VT CAN network - AGCO Power	4-103
4.1.5.74	EFD00132_7 - Electric rear-view mirrors	4-104
4.1.5.75	EFD00135_11 - Ventilation for tractors with standard roof	4-105
4.1.5.76	EFD00135_12 - Ventilation for tractors with high-visibility roof	4-106
4.1.5.77	EFD00136_59 - EAME direction indicators and flashing warning lights - standard roof	4-107
4.1.5.78	EFD00136_60 - NA direction indicators and flashing warning lights	4-108
4.1.5.79	EFD00136_61 - EAME direction indicators and flashing warning lights - high-visibility roof	4-109
4.1.5.80	EFD00137_23 - Number plate lighting (except Italy)	4-110
4.1.5.81	EFD00137_24 - Italian number plate lighting	4-111
4.1.5.82	EFD00138_35 - NA side lights	4-112
4.1.5.83	EFD00138_42 - EAME side lights	4-113
4.1.5.84	EFD00139_8 - Dyna-VT reversing light	4-114
4.1.5.85	EFD00139_9 - Dyna-6 reversing light	4-115
4.1.5.86	EFD00139_12 - Dyna-4 reversing light	4-116
4.1.5.87	EFD00140_56 - High beam lamps and low beam lamps on grille + hand rail	4-117
4.1.5.88	EFD00140_57 - High beam lamps and low beam lamps on grille	4-118
4.1.5.89	EFD00141_105 - EAME work lights	4-119
4.1.5.90	EFD00141_106 - NA work lights	4-120
4.1.5.91	EFD00142_12 - Dyna-VT brake lights	4-121
4.1.5.92	EFD00142_13 - Dyna-6 brake lights	4-122
4.1.5.93	EFD00142_14 - Dyna-4 brake lights	4-123
4.1.5.94	EFD00143_27 - Rotary beacon	4-124
4.1.5.95	EFD00144_8 - Control module	4-125
4.1.5.96	EFD00145_13 - NA trailer connector	4-126
4.1.5.97	EFD00145_14 - EAME trailer connector	4-127
4.1.5.98	EFD00146_9 - Automatic air conditioning back-lighting	4-128
4.1.5.99	EFD00146_10 - Manual air conditioning back-lighting	4-129
4.1.5.100	EFD00148_13 - Audible alarm	4-130
4.1.5.101	EFD00150_10 - Air filter vacuum sensor	4-131

4.1.5.102	EFD00151_26 - AGCO Power EEM unit power supply (66/74 AWF engine)	4-132
4.1.5.103	EFD00151_27 - AGCO Power engine electronic injection for Efficient and Exclusive tractor versions (44/66/74 AWF engine)	4-133
4.1.5.104	EFD00151_28 - AGCO Power engine electronic injection for Essential tractor versions (44/66/74 AWF engine)	4-134
4.1.5.105	EFD00151_30 - AGCO Power EEM unit power supply (66/74 CW-3 engine)	4-135
4.1.5.106	EFD00151_31 - AGCO Power engine electronic injection for Efficient and Exclusive tractor versions (66/74 CW-3 engine)	4-136
4.1.5.107	EFD00151_32 - AGCO Power engine electronic injection for Essential tractor versions (66/74 CW-3 engine)	4-137
4.1.5.108	EFD00152_17 - DANA suspended front axle (for MF 7700 models) . .	4-138
4.1.5.109	EFD00153_19 - AGCO Power preheating power supply (66/74 AWF engine)	4-139
4.1.5.110	EFD00153_20 - AGCO Power preheating power supply (66/74 CW-3 and 49AWF engine)	4-140
4.1.5.111	EFD00154_6 - Fuel preheater	4-141
4.1.5.112	EFD00157_6 - Vistronic Tier 4F/Stage IV SCR Technology engine . . .	4-142
4.1.5.113	EFD00157_7 - Vistronic Tier 3/Stage IIIA engine	4-143
4.1.5.114	EFD00159_18 - Dyna-VT hydraulic spool valves	4-144
4.1.5.115	EFD00159_19 - Dyna-6 hydraulic spool valves	4-145
4.1.5.116	EFD00161_13 - Front linkage	4-146
4.1.5.117	EFD00162_11 - Dyna-VT Dual Control linkage and trailed implements (TIC)	4-147
4.1.5.118	EFD00162_12 - Dyna-6 Dual Control linkage and trailed implements (TIC)	4-148
4.1.5.119	EFD00167_2 - Triflash for tractors with panoramic cab	4-149
4.1.5.120	EFD00168_2 - Rear fog light for tractors with panoramic cab	4-150
4.1.5.121	EFD00170_3 - High-pressure braking Dyna-6	4-151
4.1.5.122	EFD00170_4 - High-pressure braking Dyna-4	4-152
4.1.5.123	EFD00172_6 - Front accessory connection socket_1/2	4-153
4.1.5.124	EFD00172_6 - Front accessory connection socket_2/2	4-154
4.1.5.125	EFD00173_7 - Water-in-fuel sensor of the Tier 4F/Stage IV SCR Technology engine	4-155
4.1.5.126	EFD00173_8 - Water-in-fuel sensor of the Tier 3/Stage IIIA engine . . .	4-156
4.1.5.127	EFD00174_20 - Dyna-VT air brake with ParkLock - 1/2	4-157
4.1.5.128	EFD00174_20 - Dyna-VT air brake without ParkLock - 2/2	4-158
4.1.5.129	EFD00174_21 - Dyna-6 air brake with ParkLock - 1/2	4-159
4.1.5.130	EFD00174_21 - Dyna-6 air brake without ParkLock - 2/2	4-160
4.1.5.131	EFD00174_23 - Dyna-4 air brake	4-161
4.1.5.132	EFD00175 - Tier3/Stage IIIA AGCO Power engine_1/3	4-162
4.1.5.133	EFD00175 - Tier3/Stage IIIA AGCO Power engine_2/3	4-163
4.1.5.134	EFD00175 - Tier3/Stage IIIA AGCO Power engine_3/3	4-164
4.1.5.135	EFD00175 - Tier4f/Stage IV AGCO Power engine_1/3	4-165
4.1.5.136	EFD00175 - AGCO Power engine 49/66/74/84 AWF_2/3	4-166
4.1.5.137	EFD00175 - AGCO Power engine 49/66/74/84 AWF_3/3	4-167
4.1.5.138	EFD00176 - LoaderALO	4-168
4.1.5.139	EFD00176_14 - Dyna-6 front set	4-169
4.1.5.140	EFD00176_16 - Dyna-VT front set	4-170
4.1.5.141	EFD00183_2 - Implement attachment without Isobus	4-171
4.1.5.142	EFD00184_8 - AgCommand™	4-172

5 Harnesses 5-1

5.1 Harnesses 5-9

5.1.1 Identification of harnesses 5-9

5.1.2 Identification table for cable colors 5-12

5.1.3 Harnesses 5-15

5.1.3.1	FAI200 - Engine harness - 4392052_1/2	5-15
5.1.3.2	FAI200 - Engine harness - 4392052_2/2	5-16
5.1.3.3	FAI200 - Engine harness Tier 3/Stage IIIA - ACW030920_1/3	5-17
5.1.3.4	FAI200 - Engine harness Tier 3/Stage IIIA - ACW030920_2/3	5-18
5.1.3.5	FAI200 - Engine harness Tier 3/Stage IIIA - ACW030920_3/3	5-19
5.1.3.6	FAI200 - Engine harness 74 AWF EAME- ACW048545_1/4	5-20
5.1.3.7	FAI200 - Engine harness 74 AWF EAME - ACW048545_2/4	5-21
5.1.3.8	FAI200 - Engine harness 74 AWF EAME - ACW048545_3/4	5-22
5.1.3.9	FAI200 - Engine harness 74 AWF EAME - ACW048545_4/4	5-23
5.1.3.10	FAI200 - Engine harness 66AWF NA - ACW054493_1/4	5-24
5.1.3.11	FAI200 - Engine harness 66AWF NA - ACW054493_2/4	5-25
5.1.3.12	FAI200 - Engine harness 66AWF NA - ACW054493_3/4	5-26
5.1.3.13	FAI200 - Engine harness 66AWF NA - ACW054493_4/4	5-27
5.1.3.14	FAI200 - Engine harness 74AWF NA - ACW235938_1/4	5-28
5.1.3.15	FAI200 - Engine harness 74AWF NA - ACW235938_2/4	5-29
5.1.3.16	FAI200 - Engine harness 74AWF NA - ACW235938_3/4	5-30
5.1.3.17	FAI200 - Engine harness 74AWF NA - ACW235938_4/4	5-31
5.1.3.18	FAI200 - Engine harness 66AWF NA - ACW313794_1/4	5-32
5.1.3.19	FAI200 - Engine harness 66AWF NA - ACW313794_2/4	5-33
5.1.3.20	FAI200 - Engine harness 66AWF NA - ACW313794_3/4	5-34
5.1.3.21	FAI200 - Engine harness 66AWF NA - ACW313794_4/4	5-35
5.1.3.22	FAI201 - Front headlights harness - 4388041_1/2	5-36
5.1.3.23	FAI201 - Front headlights harness - 4388041_2/2	5-37
5.1.3.24	FAI201 - Front headlights harness - 4388042_1/2	5-38
5.1.3.25	FAI201 - Front headlights harness - 4388042_2/2	5-39
5.1.3.26	FAI201 - Front headlights harness - ACW219184_1/2	5-40
5.1.3.27	FAI201 - Front headlights harness - ACW219184_2/2	5-41
5.1.3.28	FAI201 - Front headlights harness - ACW227577_1/2	5-42
5.1.3.29	FAI201 - Front headlights harness - ACW227577_2/2	5-43
5.1.3.30	FAI201 - Front headlights harness - ACW380579_1/2	5-44
5.1.3.31	FAI201 - Front headlights harness - ACW380579_2/2	5-45
5.1.3.32	FAI203 - Drive train harness Dyna-VT - ACW016910_1/3	5-46
5.1.3.33	FAI203 - Drive train harness Dyna-VT - ACW016910_2/3	5-47
5.1.3.34	FAI203 - Drive train harness Dyna-VT - ACW016910_3/3	5-48
5.1.3.35	FAI203 - Drive train harness Dyna-6 GTA1540 - ACW016911_1/3	5-49
5.1.3.36	FAI203 - Drive train harness Dyna-6 GTA1540 - ACW016911_2/3	5-50
5.1.3.37	FAI203 - Drive train harness Dyna-6 GTA1540 - ACW016911_3/3	5-51
5.1.3.38	FAI203 - Drive train harness Dyna-4/Dyna-6 GTA2520 - ACW104556_1/3	5-52
5.1.3.39	FAI203 - Drive train harness Dyna-4/Dyna-6 GTA2520 - ACW104556_2/3	5-53
5.1.3.40	FAI203 - Drive train harness Dyna-4/Dyna-6 GTA2520 - ACW104556_3/3	5-54
5.1.3.41	FAI205 - Electrohydraulic valves harness - 4387694	5-55
5.1.3.42	FAI205 - Electrohydraulic valves harness - 4292090	5-56
5.1.3.43	FAI205 - Electrohydraulic valves harness - 4292091	5-57
5.1.3.44	FAI205 - Electrohydraulic valves harness - 4292093	5-58
5.1.3.45	FAI208 - Linkage with Dual Control and TIC harness - 4387797_1/2	5-59
5.1.3.46	FAI208 - Linkage with Dual Control and TIC harness - 4387797_2/2	5-60
5.1.3.47	FAI210 - Cab drive train harness Dyna-4 municipal - 4391826_1/8	5-61
5.1.3.48	FAI210 - Cab drive train harness Dyna-4 municipal - 4391826_2/8	5-62
5.1.3.49	FAI210 - Cab drive train harness Dyna-4 municipal - 4391826_3/8	5-63
5.1.3.50	FAI210 - Cab drive train harness Dyna-4 municipal - 4391826_4/8	5-64
5.1.3.51	FAI210 - Cab drive train harness Dyna-4 municipal - 4391826_5/8	5-65
5.1.3.52	FAI210 - Cab drive train harness Dyna-4 municipal - 4391826_6/8	5-66
5.1.3.53	FAI210 - Cab drive train harness Dyna-4 municipal - 4391826_7/8	5-67
5.1.3.54	FAI210 - Cab drive train harness Dyna-4 municipal - 4391826_8/8	5-68
5.1.3.55	FAI210 - Cab drive train harness Dyna-6 municipal - 4392642_1/9	5-69

5.1.3.56	FAI210 - Cab drive train harness Dyna-6 municipal - 4392642_2/9	5-70
5.1.3.57	FAI210 - Cab drive train harness Dyna-6 municipal - 4392642_3/9	5-71
5.1.3.58	FAI210 - Cab drive train harness Dyna-6 municipal - 4392642_4/9	5-72
5.1.3.59	FAI210 - Cab drive train harness Dyna-6 municipal - 4392642_5/9	5-73
5.1.3.60	FAI210 - Cab drive train harness Dyna-6 municipal - 4392642_6/9	5-74
5.1.3.61	FAI210 - Cab drive train harness Dyna-6 municipal - 4392642_7/9	5-75
5.1.3.62	FAI210 - Cab drive train harness Dyna-6 municipal - 4392642_8/9	5-76
5.1.3.63	FAI210 - Cab drive train harness Dyna-6 municipal - 4392642_9/9	5-77
5.1.3.64	FAI210 - Cab drive train harness Dyna-6 long console - ACW005784_1/8	5-78
5.1.3.65	FAI210 - Cab drive train harness Dyna-6 long console - ACW005784_2/8	5-79
5.1.3.66	FAI210 - Cab drive train harness Dyna-6 long console - ACW005784_3/8	5-80
5.1.3.67	FAI210 - Cab drive train harness Dyna-6 long console - ACW005784_4/8	5-81
5.1.3.68	FAI210 - Cab drive train harness Dyna-6 long console - ACW005784_5/8	5-82
5.1.3.69	FAI210 - Cab drive train harness Dyna-6 long console - ACW005784_6/8	5-83
5.1.3.70	FAI210 - Cab drive train harness Dyna-6 long console - ACW005784_7/8	5-84
5.1.3.71	FAI210 - Cab drive train harness Dyna-6 long console - ACW005784_8/8	5-85
5.1.3.72	FAI210 - Cab drive train harness Dyna-4 long console - ACW017847_1/7	5-86
5.1.3.73	FAI210 - Cab drive train harness Dyna-4 long console - ACW017847_2/7	5-87
5.1.3.74	FAI210 - Cab drive train harness Dyna-4 long console - ACW017847_3/7	5-88
5.1.3.75	FAI210 - Cab drive train harness Dyna-4 long console - ACW017847_4/7	5-89
5.1.3.76	FAI210 - Cab drive train harness Dyna-4 long console - ACW017847_5/7	5-90
5.1.3.77	FAI210 - Cab drive train harness Dyna-4 long console - ACW017847_6/7	5-91
5.1.3.78	FAI210 - Cab drive train harness Dyna-4 long console - ACW017847_7/7	5-92
5.1.3.79	FAI210 - Cab drive train harness Dyna-VT short console - ACW039162_1/9	5-93
5.1.3.80	FAI210 - Cab drive train harness Dyna-VT short console - ACW039162_2/9	5-94
5.1.3.81	FAI210 - Cab drive train harness Dyna-VT short console - ACW039162_3/9	5-95
5.1.3.82	FAI210 - Cab drive train harness Dyna-VT short console - ACW039162_4/9	5-96
5.1.3.83	FAI210 - Cab drive train harness Dyna-VT short console - ACW039162_5/9	5-97
5.1.3.84	FAI210 - Cab drive train harness Dyna-VT short console - ACW039162_6/9	5-98
5.1.3.85	FAI210 - Cab drive train harness Dyna-VT short console - ACW039162_7/9	5-99
5.1.3.86	FAI210 - Cab drive train harness Dyna-VT short console - ACW039162_8/9	5-100
5.1.3.87	FAI210 - Cab drive train harness Dyna-VT short console - ACW039162_9/9	5-101
5.1.3.88	FAI210 - Cab drive train harness Dyna-6 short console - ACW039167_1/9	5-102

5.1.3.89 FAI210 - Cab drive train harness Dyna-6 short console - ACW039167_2/9 5-103

5.1.3.90 FAI210 - Cab drive train harness Dyna-6 short console - ACW039167_3/9 5-104

5.1.3.91 FAI210 - Cab drive train harness Dyna-6 short console - ACW039167_4/9 5-105

5.1.3.92 FAI210 - Cab drive train harness Dyna-6 short console - ACW039167_5/9 5-106

5.1.3.93 FAI210 - Cab drive train harness Dyna-6 short console - ACW039167_6/9 5-107

5.1.3.94 FAI210 - Cab drive train harness Dyna-6 short console - ACW039167_7/9 5-108

5.1.3.95 FAI210 - Cab drive train harness Dyna-6 short console - ACW039167_8/9 5-109

5.1.3.96 FAI210 - Cab drive train harness Dyna-6 short console - ACW039167_9/9 5-110

5.1.3.97 FAI210 - Cab drive train harness Dyna-6 short console - ACW234544_1/10 5-111

5.1.3.98 FAI210 - Cab drive train harness Dyna-6 short console - ACW234544_2/10 5-112

5.1.3.99 FAI210 - Cab drive train harness Dyna-6 short console - ACW234544_3/10 5-113

5.1.3.100 FAI210 - Cab drive train harness Dyna-6 short console - ACW234544_4/10 5-114

5.1.3.101 FAI210 - Cab drive train harness Dyna-6 short console - ACW234544_5/10 5-115

5.1.3.102 FAI210 - Cab drive train harness Dyna-6 short console - ACW234544_6/10 5-116

5.1.3.103 FAI210 - Cab drive train harness Dyna-6 short console - ACW234544_7/10 5-117

5.1.3.104 FAI210 - Cab drive train harness Dyna-6 short console - ACW234544_8/10 5-118

5.1.3.105 FAI210 - Cab drive train harness Dyna-6 short console - ACW234544_9/10 5-119

5.1.3.106 FAI210 - Cab drive train harness Dyna-6 short console - ACW234544_10/10 5-120

5.1.3.107 FAI210 - Cab drive train harness Dyna-4 municipal - ACW242339_1/10 5-121

5.1.3.108 FAI210 - Cab drive train harness Dyna-4 municipal - ACW242339_2/10 5-122

5.1.3.109 FAI210 - Cab drive train harness Dyna-4 municipal - ACW242339_3/10 5-123

5.1.3.110 FAI210 - Cab drive train harness Dyna-4 municipal - ACW242339_4/10 5-124

5.1.3.111 FAI210 - Cab drive train harness Dyna-4 municipal - ACW242339_5/10 5-125

5.1.3.112 FAI210 - Cab drive train harness Dyna-4 municipal - ACW242339_6/10 5-126

5.1.3.113 FAI210 - Cab drive train harness Dyna-4 municipal - ACW242339_7/10 5-127

5.1.3.114 FAI210 - Cab drive train harness Dyna-4 municipal - ACW242339_8/10 5-128

5.1.3.115 FAI210 - Cab drive train harness Dyna-4 municipal - ACW242339_9/10 5-129

5.1.3.116 FAI210 - Cab drive train harness Dyna-4 municipal - ACW242339_10/10 5-130

5.1.3.117 FAI210 - Cab drive train harness Dyna-VT short console - ACW243229_1/10 5-131

5.1.3.118 FAI210 - Cab drive train harness Dyna-VT short console - ACW243229_2/10 5-132

5.1.3.119 FAI210 - Cab drive train harness Dyna-VT short console - ACW243229_3/10 5-133

5.1.3.120 FAI210 - Cab drive train harness Dyna-VT short console - ACW243229_4/10 5-134

5.1.3.121 FAI210 - Cab drive train harness Dyna-VT short console - ACW243229_5/10 5-135

5.1.3.122	FAI210 - Cab drive train harness Dyna-VT short console -	
ACW243229_6/10		5-136
5.1.3.123	FAI210 - Cab drive train harness Dyna-VT short console -	
ACW243229_7/10		5-137
5.1.3.124	FAI210 - Cab drive train harness Dyna-VT short console -	
ACW243229_8/10		5-138
5.1.3.125	FAI210 - Cab drive train harness Dyna-VT short console -	
ACW243229_9/10		5-139
5.1.3.126	FAI210 - Cab drive train harness Dyna-VT short console -	
ACW243229_10/10		5-140
5.1.3.127	FAI210 - Cab drive train harness Dyna-6 municipal - ACW281070_1/11	5-141
5.1.3.128	FAI210 - Cab drive train harness Dyna-6 municipal - ACW281070_2/11	5-142
5.1.3.129	FAI210 - Cab drive train harness Dyna-6 municipal - ACW281070_3/11	5-143
5.1.3.130	FAI210 - Cab drive train harness Dyna-6 municipal - ACW281070_4/11	5-144
5.1.3.131	FAI210 - Cab drive train harness Dyna-6 municipal - ACW281070_5/11	5-145
5.1.3.132	FAI210 - Cab drive train harness Dyna-6 municipal - ACW281070_6/11	5-146
5.1.3.133	FAI210 - Cab drive train harness Dyna-6 municipal - ACW281070_7/11	5-147
5.1.3.134	FAI210 - Cab drive train harness Dyna-6 municipal - ACW281070_8/11	5-148
5.1.3.135	FAI210 - Cab drive train harness Dyna-6 municipal - ACW281070_9/11	5-149
5.1.3.136	FAI210 - Cab drive train harness Dyna-6 municipal - ACW281070_10/11	
		5-150
5.1.3.137	FAI210 - Cab drive train harness Dyna-6 municipal - ACW281070_11/11	
		5-151
5.1.3.138	FAI210 - Cab drive train harness Dyna-6 long console -	
ACW285998_1/9		5-152
5.1.3.139	FAI210 - Cab drive train harness Dyna-6 long console -	
ACW285998_2/9		5-153
5.1.3.140	FAI210 - Cab drive train harness Dyna-6 long console -	
ACW285998_3/9		5-154
5.1.3.141	FAI210 - Cab drive train harness Dyna-6 long console -	
ACW285998_4/9		5-155
5.1.3.142	FAI210 - Cab drive train harness Dyna-6 long console -	
ACW285998_5/9		5-156
5.1.3.143	FAI210 - Cab drive train harness Dyna-6 long console -	
ACW285998_6/9		5-157
5.1.3.144	FAI210 - Cab drive train harness Dyna-6 long console -	
ACW285998_7/9		5-158
5.1.3.145	FAI210 - Cab drive train harness Dyna-6 long console -	
ACW285998_8/9		5-159
5.1.3.146	FAI210 - Cab drive train harness Dyna-6 long console -	
ACW285998_9/9		5-160
5.1.3.147	FAI210 - Cab drive train harness Dyna-4 long console -	
ACW287243_1/9		5-161
5.1.3.148	FAI210 - Cab drive train harness Dyna-4 long console -	
ACW287243_2/9		5-162
5.1.3.149	FAI210 - Cab drive train harness Dyna-4 long console -	
ACW287243_3/9		5-163
5.1.3.150	FAI210 - Cab drive train harness Dyna-4 long console -	
ACW287243_4/9		5-164
5.1.3.151	FAI210 - Cab drive train harness Dyna-4 long console -	
ACW287243_5/9		5-165
5.1.3.152	FAI210 - Cab drive train harness Dyna-4 long console -	
ACW287243_6/9		5-166
5.1.3.153	FAI210 - Cab drive train harness Dyna-4 long console -	
ACW287243_7/9		5-167
5.1.3.154	FAI210 - Cab drive train harness Dyna-4 long console -	
ACW287243_8/9		5-168

5.1.3.155	FAI210 - Cab drive train harness Dyna-4 long console - ACW287243_9/9	5-169
5.1.3.156	FAI212 - Lighting harness Municipal cab - 4380685_1/3	5-170
5.1.3.157	FAI212 - Lighting harness Municipal cab - 4380685_2/3	5-171
5.1.3.158	FAI212 - Lighting harness Municipal cab - 4380685_3/3	5-172
5.1.3.159	FAI212 - Lighting harness EAME - ACW039170_1/3	5-173
5.1.3.160	FAI212 - Lighting harness EAME - ACW039170_2/3	5-174
5.1.3.161	FAI212 - Lighting harness EAME - ACW039170_3/3	5-175
5.1.3.162	FAI212 - Lighting harness NA - ACW039182_1/3	5-176
5.1.3.163	FAI212 - Lighting harness NA - ACW039182_2/3	5-177
5.1.3.164	FAI212 - Lighting harness NA - ACW039182_3/3	5-178
5.1.3.165	FAI212 - Lighting harness EAME - ACW125945_1/3	5-179
5.1.3.166	FAI212 - Lighting harness EAME - ACW125945_2/3	5-180
5.1.3.167	FAI212 - Lighting harness EAME - ACW125945_3/3	5-181
5.1.3.168	FAI212 - Lighting harness municipal cab - ACW147899_1/3	5-182
5.1.3.169	FAI212 - Lighting harness municipal cab - ACW147899_2/3	5-183
5.1.3.170	FAI212 - Lighting harness municipal cab - ACW147899_3/3	5-184
5.1.3.171	FAI219 - Cab interior current socket harness - 4290574_1/2	5-185
5.1.3.172	FAI219 - Cab interior current socket harness - 4290574_2/2	5-186
5.1.3.173	FAI219 - Cab interior current socket harness - 4290575_1/2	5-187
5.1.3.174	FAI219 - Cab interior current socket harness - 4290575_2/2	5-188
5.1.3.175	FAI223 - Roof harness standard with manual air conditioning - 4353057_1/3	5-189
5.1.3.176	FAI223 - Roof harness standard with manual air conditioning - 4353057_2/3	5-190
5.1.3.177	FAI223 - Roof harness standard with manual air conditioning - 4353057_3/3	5-191
5.1.3.178	FAI223 - Roof harness_High visibility - 4375395_1/3	5-192
5.1.3.179	FAI223 - Roof harness_High visibility_4375395_2/3	5-193
5.1.3.180	FAI223 - Roof harness_High visibility_4375395_3/3	5-194
5.1.3.181	FAI223 - Roof harness_standard_municipal_cab_ACW001936_1/3	5-195
5.1.3.182	FAI223 - Roof harness_standard_municipal_cab_ACW001936_2/3	5-196
5.1.3.183	FAI223 - Roof harness_standard_municipal_cab_ACW001936_3/3	5-197
5.1.3.184	FAI225 - Electric rear-view mirror harness - 4352622_1/2	5-198
5.1.3.185	FAI225 - Electric rear-view mirror harness - 4352622_2/2	5-199
5.1.3.186	FAI227 - Roof harness with automatic air conditioning - 4352621_1/3	5-200
5.1.3.187	FAI227 - Roof harness with automatic air conditioning - 4352621_2/3	5-201
5.1.3.188	FAI227 - Roof harness with automatic air conditioning - 4352621_3/3	5-202
5.1.3.189	FAI228 - Number plate lighting harness - 4353107_1/2	5-203
5.1.3.190	FAI228 - Number plate lighting harness - 4353107_2/2	5-204
5.1.3.191	FAI228 - Number plate lighting harness - 4357222_1/2	5-205
5.1.3.192	FAI228 - Number plate lighting harness - 4357222_2/2	5-206
5.1.3.193	FAI231 - Drive train harness - ParkLock Dyna-6 - 4353255_1/2	5-207
5.1.3.194	FAI231 - Drive train harness - ParkLock Dyna-6 - 4353255_2/2	5-208
5.1.3.195	FAI231 - Drive train harness - ParkLock Dyna-VT - 4390010_1/2	5-209
5.1.3.196	FAI231 - Drive train harness - ParkLock Dyna-VT - 4390010_2/2	5-210
5.1.3.197	FAI231 - Drive train harness - ParkLock Dyna-VT - ACW116909_1/2	5-211
5.1.3.198	FAI231 - Drive train harness - ParkLock Dyna-VT - ACW116909_2/2	5-212
5.1.3.199	FAI243 - Circuit breaker harness - ACW207512_1/2	5-213
5.1.3.200	FAI243 - Circuit breaker harness - ACW207512_2/2	5-214
5.1.3.201	FAI245 - Left-hand linkage external controls harness - 4348463_1/2	5-215
5.1.3.202	FAI245 - Left-hand linkage external controls harness - 4348463_2/2	5-216
5.1.3.203	FAI253 - Hand rail harness - 4390260_1/2	5-217
5.1.3.204	FAI253 - Hand rail harness - 4390260_2/2	5-218
5.1.3.205	FAI253 - Hand rail harness - 4390262_1/2	5-219
5.1.3.206	FAI253 - Hand rail harness - 4390262_2/2	5-220
5.1.3.207	FAI260 - Cooling unit harness - 4350584_1/2	5-221
5.1.3.208	FAI260 - Cooling unit harness - 4350584_2/2	5-222

5.1.3.209	FAI261 - Isobus harness - 4353130_2/2	5-223
5.1.3.210	FAI261 - Isobus harness - 4353130_1/2	5-224
5.1.3.211	FAI261 - Isobus harness - 4353133	5-225
5.1.3.212	FAI262 - Auto-Guide™ engine harness - 4296810_1/2	5-226
5.1.3.213	FAI262 - Auto-Guide™ engine harness - 4296810_2/2	5-227
5.1.3.214	FAI263 - Auto-Guide™ cab adapter harness - 4353936_1/2	5-228
5.1.3.215	FAI263 - Auto-Guide™ cab adapter harness - 4353936_2/2	5-229
5.1.3.216	FAI263 - Auto-Guide™ cab adapter harness - ACW216732_1/2	5-230
5.1.3.217	FAI263 - Auto-Guide™ cab adapter harness - ACW216732_2/2	5-231
5.1.3.218	FAI264 - Auto-Guide™ roof adapter harness - ACW214003_1/2	5-232
5.1.3.219	FAI264 - Auto-Guide™ roof adapter harness - ACW214003_2/2	5-233
5.1.3.220	FAI264 - Auto-Guide™ roof adapter harness - ACW215610_1/2	5-234
5.1.3.221	FAI264 - Auto-Guide™ roof adapter harness - ACW215610_2/2	5-235
5.1.3.222	FAI265 - Air brake harness Dyna-VT - ACW016912_1/2	5-236
5.1.3.223	FAI265 - Air brake harness Dyna-VT - ACW016912_2/2	5-237
5.1.3.224	FAI265 - Air brake harness Dyna-6 - ACW016913_1/2	5-238
5.1.3.225	FAI265 - Air brake harness Dyna-6 - ACW016913_2/2	5-239
5.1.3.226	FAI265 - Air brake harness Dyna-6- ACW034317_1/2	5-240
5.1.3.227	FAI265 - Air brake harness Dyna-6- ACW034317_2/2	5-241
5.1.3.228	FAI265 - Air brake harness - ACW125716_1/2	5-242
5.1.3.229	FAI265 - Air brake harness - ACW125716_2/2	5-243
5.1.3.230	FAI268 - Front function harness EAME - 4387691_1/3	5-244
5.1.3.231	FAI268 - Front function harness EAME - 4387691_2/3	5-245
5.1.3.232	FAI268 - Front function harness - 4387692_1/2	5-246
5.1.3.233	FAI268 - Front function harness - 4387692_2/2	5-247
5.1.3.234	FAI268 - Front function harness EAME - 4387691_3/3	5-248
5.1.3.235	FAI268 - Front function harness - 4387693_1/2	5-249
5.1.3.236	FAI268 - Front function harness - 4387693_2/2	5-250
5.1.3.237	FAI268 - Front function harness - ACW104554_1/2	5-251
5.1.3.238	FAI268 - Front function harness - ACW104554_2/2	5-252
5.1.3.239	FAI268 - Front function harness - ACW104555_1/2	5-253
5.1.3.240	FAI268 - Front function harness - ACW104555_2/2	5-254
5.1.3.241	FAI272 - Suspended cab harness - ACW003763_1/2	5-255
5.1.3.242	FAI272 - Suspended cab harness - ACW003763_2/2	5-256
5.1.3.243	FAI272 - Suspended cab harness Dyna-6 - ACW039185_1/2	5-257
5.1.3.244	FAI272 - Suspended cab harness Dyna-6 - ACW039185_2/2	5-258
5.1.3.245	FAI272 - Suspended cab harness Dyna-VT - ACW060395_1/2	5-259
5.1.3.246	FAI272 - Suspended cab harness Dyna-VT - ACW060395_2/2	5-260
5.1.3.247	FAI283 - TopDock harness - 4377536_1/2	5-261
5.1.3.248	FAI283 - TopDock harness - 4377536_2/2	5-262
5.1.3.249	FAI287 - ALO loader harness external without multi-function armrest - 4378794_1/2	5-263
5.1.3.250	FAI287 - ALO loader harness external without multi-function armrest - 4378794_2/2	5-264
5.1.3.251	FAI287 - ALO loader harness internal without multi-function armrest - 4378879_1/2	5-265
5.1.3.252	FAI287 - ALO loader harness internal without multi-function armrest - 4378879_2/2	5-266
5.1.3.253	FAI290 - Non-Isobus implement connector harness - 4296266_1/2	5-267
5.1.3.254	FAI290 - Non-Isobus implement connector harness - 4296266_2/2	5-268
5.1.3.255	FAI292 - NA direction indicator harness - 4350987	5-269
5.1.3.256	FAI292 - NA direction indicator harness - 4355519_1/2	5-270
5.1.3.257	FAI292 - NA direction indicator harness - 4355519_2/2	5-271
5.1.3.258	FAI292 - NA direction indicator harness - 4376780_1/2	5-272
5.1.3.259	FAI292 - NA direction indicator harness - 4376780_2/2	5-273
5.1.3.260	FAI293 - EAME direction indicator harness - 4350988	5-274
5.1.3.261	FAI294 - Additional heater harness - 4299327_1/2	5-275
5.1.3.262	FAI294 - Additional heater harness - 4299327_2/2	5-276

5.1.3.263	FAI293 - EAME direction indicator harness - 4355520_1/2	5-277
5.1.3.264	FAI293 - EAME direction indicator harness - 4355520_2/2	5-278
5.1.3.265	FAI299 - Battery isolator harness - 4387426_1/2	5-279
5.1.3.266	FAI299 - Battery isolator harness - 4387426_2/2	5-280
5.1.3.267	FAI299 - Battery isolator harness - ACW028832_1/2	5-281
5.1.3.268	FAI299 - Battery isolator harness - ACW028832_2/2	5-282
5.1.3.269	FAI300 - Air conditioning shunt harness - 4353106	5-283
5.1.3.270	FAI305 - Engine exhaust harness - 4348876	5-284
5.1.3.271	FAI306 - TopCon harness	5-285
5.1.3.272	FAI307 - Datatronic 4 harness - 4353638_1/2	5-286
5.1.3.273	FAI307 - Datatronic 4 harness - 4353638_2/2	5-287
5.1.3.274	FAI307 - Datatronic 4 harness - 4390934_1/2	5-288
5.1.3.275	FAI307 - Datatronic 4 harness - 4390934_2/2	5-289
5.1.3.276	FAI307 - Datatronic 4 harness - ACW209580_1/2	5-290
5.1.3.277	FAI307 - Datatronic 4 harness - ACW209580_2/2	5-291
5.1.3.278	FAI307 - Datatronic 5 harness - ACW352676_1/2	5-292
5.1.3.279	FAI307 - Datatronic 5 harness - ACW352676_2/2	5-293
5.1.3.280	FAI310 - Battery/battery isolator negative cable harness - 4374612_1/2	5-294
5.1.3.281	FAI310 - Battery/battery isolator negative cable harness - 4374612_2/2	5-295
5.1.3.282	FAI310 - Battery/battery isolator negative cable harness - 4389477 . .	5-296
5.1.3.283	FAI311 - Battery/starter positive cable harness - ACW024867	5-297
5.1.3.284	FAI312 - Cab/starter negative cable harness - 4350547_1/2	5-298
5.1.3.285	FAI312 - Cab/starter negative cable harness - 4350547_2/2	5-299
5.1.3.286	FAI312 - Cab/starter negative cable harness - ACW024869	5-300
5.1.3.287	FAI313 - Cab/battery isolator negative cable harness - 4350680_1/2 . .	5-301
5.1.3.288	FAI313 - Cab/battery isolator negative cable harness - 4350680_2/2 . .	5-302
5.1.3.289	FAI313 - Cab/battery isolator negative cable harness - 4389475	5-303
5.1.3.290	FAI314 - Alternator harness - 4388664_1/2	5-304
5.1.3.291	FAI314 - Alternator harness - 4388664_2/2	5-305
5.1.3.292	FAI314 - Alternator harness- 4390055_1/2	5-306
5.1.3.293	FAI314 - Alternator harness- 4390055_2/2	5-307
5.1.3.294	FAI314 - Alternator harness- 4390365_1/2	5-308
5.1.3.295	FAI314 - Alternator harness- 4390365_2/2	5-309
5.1.3.296	FAI314 - Alternator harness (right-hand) - ACW031995_1/2	5-310
5.1.3.297	FAI314 - Alternator harness (right-hand) - ACW031995_2/2	5-311
5.1.3.298	FAI317 - Vistronic harness - 4392053_1/2	5-312
5.1.3.299	FAI317 - Vistronic harness - 4392053_2/2	5-313
5.1.3.300	FAI321 - GSPTO harness - ACW008066_1/2	5-314
5.1.3.301	FAI321 - GSPTO harness - ACW008066_2/2	5-315
5.1.3.302	FAI323 - Hydraulic safety harness Load Sensing - 4355616_1/2	5-316
5.1.3.303	FAI323 - Hydraulic safety harness Load Sensing - 4355616_2/2	5-317
5.1.3.304	FAI325 - Power take-off electric selector harness - 4377601_1/2	5-318
5.1.3.305	FAI325 - Power take-off electric selector harness - 4377601_2/2	5-319
5.1.3.306	FAI325 - Power take-off electric selector harness 2 speeds - 4388702_1/2	5-320
5.1.3.307	FAI325 - Power take-off electric selector harness 2 speeds - 4388702_2/2	5-321
5.1.3.308	FAI325 - Power take-off electric selector harness 3 speeds - 4388703_1/2	5-322
5.1.3.309	FAI325 - Power take-off electric selector harness 3 speeds - 4388703_2/2	5-323
5.1.3.310	FAI327 - GPA 20 to GPA 20+ adapter harness - 4377849_1/2	5-324
5.1.3.311	FAI327 - GPA 20 to GPA 20+ adapter harness - 4377849_2/2	5-325
5.1.3.312	FAI340 - Battery/fuse box positive cable harness - 4347791_2/2	5-326
5.1.3.313	FAI340 - Battery/fuse box positive cable harness - 4347791_1/2	5-327
5.1.3.314	FAI340 - Battery/fuse box positive cable harness - ACW029172	5-328
5.1.3.315	FAI354 - External loader harness - 4374651_1/2	5-329
5.1.3.316	FAI354 - External loader harness - 4374651_2/2	5-330

5.1.3.317	FAI353 - Loader harness - ACW138345_1/2	5-331
5.1.3.318	FAI353 - Loader harness - ACW138345_1/2	5-332
5.1.3.319	FAI355 - Harness for the left-hand alternator and grid heater - 4387305_1/2	5-333
5.1.3.320	FAI355 - Harness for the left-hand alternator and grid heater - 4387305_2/2	5-334
5.1.3.321	FAI355 - Harness for the left-hand alternator and grid heater - ACW031997_1/2	5-335
5.1.3.322	FAI355 - Harness for the left-hand alternator and grid heater - ACW031997_2/2	5-336
5.1.3.323	FAI355 - Harness for the left-hand alternator and grid heater - ACW031999	5-337
5.1.3.324	FAI360 - TopDock harness - 4377537-1/2	5-338
5.1.3.325	FAI360 - TopDock harness - 4377537-2/2	5-339
5.1.3.326	FAI361 - Adapter harness for wheel angle sensor - 4392928	5-340
5.1.3.327	FAI364 - Adapter harness for suspended front axle position sensor - 4391131-1/2	5-341
5.1.3.328	FAI364 - Adapter harness for suspended front axle position sensor - 4391131-2/2	5-342
5.1.3.329	FAI368 - LED light adapter harness - ACW251462	5-343
5.1.3.330	FAI368 - LED light adapter harness - ACW347860_1/2	5-344
5.1.3.331	FAI368 - LED light adapter harness - ACW347860_2/2	5-345
5.1.3.332	FAI379 - ABS trailer connector harness - ACW117528_1/2	5-346
5.1.3.333	FAI379 - ABS trailer connector harness - ACW117528_2/2	5-347
6	Hydraulics diagrams	6-1
6.1	Hydraulics diagrams	6-5
6.1.1	Hydraulics diagrams	6-7
6.1.1.1	HFD01021 - Auxiliary hydraulics diagram: all options -ML140	6-7
6.1.1.2	HFD01021 - Auxiliary hydraulics diagram: all options - ML180	6-8
6.1.1.3	HFD01022 - Standard auxiliary hydraulics diagram ML180/ML140	6-9
6.1.1.4	HFD01027 - Auxiliary hydraulics diagram: all options, GTA1540	6-10
6.1.1.5	HFD01028 - Standard auxiliary hydraulics diagram GTA1540	6-11
6.1.1.6	HFD01031 - Hydraulics diagram: all options, GTA2520 Open Center 57 L/ min	6-12
6.1.1.7	HFD01032 - Standard hydraulics diagram GTA2520 Open Center 57 L/ min	6-13
6.1.1.8	HFD01033 - Hydraulics diagram: all options, GTA2520 Open Center 100 L/min	6-14
6.1.1.9	HFD01034 - Standard hydraulics diagram GTA2520 Open Center 100 L/ min	6-15
6.1.1.10	HFD01046 - Hydraulics diagram: all options, GTA2520 Load Sensing	6-16
6.1.1.11	HFD01047 - Standard hydraulics diagram GTA2520 Load Sensing	6-17
6.1.1.12	HFD01064 - Auxiliary hydraulics diagram with all options, GTA1540 Mother Regulation	6-18
6.1.1.13	HFD01065 - auxiliary hydraulics diagram with all options, ML180 Mother Regulation	6-19
6.1.1.14	HFD01071 - Auxiliary hydraulics diagram with all options, GTA2520 Open Center 57 L/min Mother Regulation	6-20
6.1.1.15	HFD01072 - Auxiliary hydraulics diagram with all options, GTA2520 Open Center 100 L/min Mother Regulation	6-21
6.1.1.16	HFD01073 - Auxiliary hydraulics diagram with all options, GTA2520 Load Sensing Mother Regulation	6-22
6.1.1.17	HFD02009 - Hydraulics diagram: ML180/ML140 Auto-Guide™/ SpeedSteer steering system	6-23
6.1.1.18	HFD02010 - Hydraulics diagram: ML140/ML180 standard steering system	6-24

6.1.1.19	HFD03039 - Hydraulics diagram: ML180 brake system with trailer brake and ParkLock	6-25
6.1.1.20	HFD03040 - Hydraulics diagram: ML180/ML140 brake system with trailer air brake	6-26
6.1.1.21	HFD03041 - Hydraulics diagram: ML180/ML140 brake system without trailer brake	6-27
6.1.1.22	HFD03042 - Hydraulics diagram: GTA1540 high-pressure braking with Auto-Guide™ steering and pneumatic trailer brake	6-28
6.1.1.23	HFD03043 - Hydraulics diagram: GTA1540 high pressure braking with trailer brake	6-29
6.1.1.24	HFD03044 - Hydraulics diagram: GTA1540 assisted braking with Auto-Guide™ steering and pneumatic trailer brake	6-30
6.1.1.25	HFD03045 - Hydraulics diagram: GTA1540 assisted braking with trailer brake	6-31
6.1.1.26	HFD03046 - Hydraulics diagram: GTA1540 high-pressure braking with Auto-Guide™ steering	6-32
6.1.1.27	HFD03047 - Hydraulics diagram: GTA1540 high pressure braking	6-33
6.1.1.28	HFD03048 - Hydraulics diagram: GTA1540 assisted braking with Auto-Guide™	6-34
6.1.1.29	HFD03049 - Hydraulics diagram: GTA1540 assisted braking	6-35
6.1.1.30	HFD03050 - Hydraulics diagram: GTA1540 ParkLock	6-36
6.1.1.31	HFD03051 - Hydraulics diagram: GTA2520 Open Center 57 L/min assisted braking with front axle suspension and trailer brake	6-37
6.1.1.32	HFD03052 - Hydraulics diagram: GTA2520 Open Center 57 L/min assisted braking	6-38
6.1.1.33	HFD03053 - Hydraulics diagram: GTA2520 Open Center 57 L/min high pressure braking with trailer brake and front axle suspension	6-39
6.1.1.34	HFD03054 - Hydraulics diagram: GTA2520 Open Center 57 L/min high pressure braking with front axle suspension	6-40
6.1.1.35	HFD03055 - Hydraulics diagram: GTA2520 Open Center 100 L/min assisted braking with trailer brake and front axle suspension	6-41
6.1.1.36	HFD03056 - Hydraulics diagram: GTA2520 Open Center 100 L/min assisted braking	6-42
6.1.1.37	HFD03057 - Hydraulics diagram: GTA2520 Open Center 100 L/min high pressure braking with trailer brake and front axle suspension	6-43
6.1.1.38	HFD03058 - Hydraulics diagram: GTA2520 Open Center 100 L/min high pressure braking with front axle suspension	6-44
6.1.1.39	HFD03059 - Hydraulics diagram: GTA2520 Load Sensing high-pressure braking with pneumatic trailer brake and Auto-Guide™ steering	6-45
6.1.1.40	HFD03060 - Hydraulics diagram: GTA2520 Load Sensing high pressure braking with trailer air brake	6-46
6.1.1.41	HFD03061 - Hydraulics diagram: GTA2520 Load Sensing assisted braking with pneumatic trailer brake and Auto-Guide™ steering	6-47
6.1.1.42	HFD03062 - Hydraulics diagram: GTA2520 Load Sensing assisted braking with trailer air brake	6-48
6.1.1.43	HFD03063 - Hydraulics diagram: GTA2520 Load Sensing high-pressure braking and Auto-Guide™ steering	6-49
6.1.1.44	HFD03064 - Hydraulics diagram: GTA2520 Load Sensing high pressure braking	6-50
6.1.1.45	HFD03065 - Hydraulics diagram: GTA2520 Load Sensing assisted braking and Auto-Guide™ steering	6-51
6.1.1.46	HFD03066 - Hydraulics diagram: GTA2520 Load Sensing assisted braking	6-52
6.1.1.47	HFD04004 - Hydraulics diagram: ML140/ML180 rear linkage	6-53
6.1.1.48	HFD04006 - Hydraulics diagram: GTA1540 rear linkage	6-54
6.1.1.49	HFD05004 - Hydraulics diagram: ML140/ML180 front linkage	6-55
6.1.1.50	HFD05006 - Hydraulics diagram: GTA1540 front linkage with spool valves	6-56

6.1.1.51	HFD05007 - Hydraulics diagram: GTA1540 front linkage	6-57
6.1.1.52	HFD05008 - Hydraulics diagram: GTA2520 Load Sensing front linkage and front spool valves with front set	6-58
6.1.1.53	HFD05009 - Hydraulics diagram: GTA2520 Load Sensing front linkage without front set	6-59
6.1.1.54	HFD06006 - Hydraulics diagram: ML180/ML140 auxiliary electrohydraulic spool valves	6-60
6.1.1.55	HFD06008 - Hydraulics diagram: GTA1540 mechanical auxiliary hydraulic spool valves	6-61
6.1.1.56	HFD06009 - Hydraulics diagram: ML180/ML140 auxiliary electrohydraulic and mechanical spool valves	6-62
6.1.1.57	HFD06010 - Hydraulics diagram: GTA1540 auxiliary electrohydraulic and mechanical spool valves	6-63
6.1.1.58	HFD06011 - Hydraulics diagram: GTA1540 auxiliary electrohydraulic spool valves	6-64
6.1.1.59	HFD06012 - Hydraulics diagram: GTA2520 Load Sensing rear spool valves, four mechanical and Power Beyond	6-65
6.1.1.60	HFD06013 - Hydraulics diagram: GTA2520 Load Sensing rear spool valves, two mechanical and two electrohydraulic	6-66
6.1.1.61	HFD06014 - Hydraulics diagram: GTA2520 Load Sensing rear spool valves, four electrohydraulic and Power Beyond	6-67
6.1.1.62	HFD07004 - Hydraulics diagram: ML140/ML180 auto-hitch	6-68
6.1.1.63	HFD07006 - Hydraulics diagram: GTA1540 auto-hitch	6-69
6.1.1.64	HFD08004 - Hydraulics diagram: ML180 suspended front axle	6-70
6.1.1.65	HFD08006 - Hydraulics diagram: GTA1540 suspended front axle	6-71
6.1.1.66	HFD10000_1 - Hydraulics diagram: ALO loader	6-72
6.1.1.67	HFD10009 - Hydraulics diagram: ML140/ML180 tractor with loader	6-73
6.1.1.68	HFD10013 - Hydraulics diagram: GTA1540 tractor with loader	6-74
6.1.1.69	HFD10014 - Hydraulics diagram: GTA2520 Load Sensing loader with front set	6-75
6.1.1.70	HFD10015 - Hydraulics diagram: GTA2520 Load Sensing loader without front set	6-76
6.1.1.71	Transmission hydraulics diagram	6-77
7	Pneumatic diagrams	7-1
7.1	Pneumatic diagrams	7-3
7.1.1	Pneumatic diagrams	7-5
7.1.1.1	PFD01015 - GPA40/ML140/ML180 pneumatic trailer braking	7-5
7.1.1.2	PFD01016 - GPA20 pneumatic trailer braking	7-6
7.1.1.3	PFD01022 - Pneumatic diagram ML140/ML180 (Mother Regulation)	7-7
7.1.1.4	PFD01023 - Pneumatic diagram GPA40 (Mother Regulation)	7-8
7.1.1.5	PFD01024 - Pneumatic diagram GPA20 (Mother Regulation)	7-9
8	Adjustments, bleeding and calibrations	8-1
8.1	Bleeding	8-3
8.1.1	Bleeding: Dyna-VT - assisted brake master cylinders	8-3
8.1.1.1	Charge connector	8-3
8.1.1.2	Pressure connector	8-3
8.1.1.3	Bleed screw locations	8-3
8.1.1.4	Procedure for bleeding the assisted braking system	8-4
8.1.2	Bleeding: Dyna-4/Dyna-6 - assisted brake master cylinders	8-6
8.1.2.1	Charge connector	8-6
8.1.2.2	Pressure connector - Load Sensing system	8-6
8.1.2.3	Pressure connector - Open Center system	8-7
8.1.2.4	Bleed screw locations	8-7
8.1.2.5	Procedure for bleeding the assisted braking system	8-8
8.1.3	Bleeding: Dyna-4/Dyna-6 - high-pressure braking	8-10
8.1.3.1	Bleed screw locations	8-10

8.1.3.2 Procedure for bleeding the high-pressure braking system	8-12
8.2 Calibrations	8-14
8.2.1 Calibrating the automatic disengagement of the differential and 4-wheel drive . . .	8-14
8.2.2 Calibration of the forward-travel lever	8-16
8.2.3 Forward speed calibration	8-18
8.2.4 Front power take-off calibration for Dyna-4/Dyna-6	8-18
8.2.5 Calibration of the Dyna-4 and Dyna-6 PowerShuttle transmission	8-19
8.2.6 Calibrating the power sensor on transmission Dyna-6/Dyna-4	8-22
8.2.7 Dyna-VT transmission calibrations: Introduction and access to calibration using the instrument panel	8-23
8.2.8 Calibration of the high/low speed ranges (Hare/Tortoise) for Dyna-VT	8-24
8.2.9 Dyna-VT transmission calibration	8-25
8.2.10 Calibration of the Dyna-VT coupler function	8-26
8.2.11 Rear power take-off calibration for Dyna-VT	8-27
8.2.12 Front power take-off calibration Dyna-VT	8-28
8.2.13 Dyna-VT transmission calibration error code	8-29
8.2.14 Calibration of the clutch pedal sensor	8-32
8.2.15 Calibration of the throttle pedal sensor	8-32
8.2.16 Calibrating the rear linkage	8-33
8.2.17 Calibration of the front linkage position sensor	8-35
8.2.18 Calibrate the suspended front axle.	8-36
8.2.19 Calibration of the left/right steering angle sensor (WAS)	8-38
8.2.20 Calibration of the centring steering angle sensor (WAS)	8-45
8.2.21 Left/right steering angle sensor (WAS) calibration error code	8-51
8.2.22 Angle sensor (WAS) centring calibration error code	8-52
8.2.23 Calibrations to be carried out using the diagnostic tool	8-52
8.2.23.1 Calibrating the forward travel lever on the armrest	8-52
8.2.23.2 Calibration of the FingerTIP controls on the armrest	8-55
8.2.23.3 Calibration of the FingerTIPs on the console	8-58
8.2.23.4 Joystick calibration	8-61
8.2.23.5 Calibrating the forward travel lever on the armrest	8-64
8.2.23.6 Calibrating the hand throttle.	8-66
8.2.23.7 Calibrating the depth control thumb wheel	8-68

1. General Information

1.1 General specifications	1-3
1.1.1 General specifications for MF 7714 S, MF 7715 S, MF 7716 S and MF 7718 S models	1-3
1.1.1.1 Models MF 7700 S Dyna-4	1-3
1.1.1.2 Models MF 7700 S Dyna-6	1-11
1.1.1.3 MF 7700 S Dyna-VT models	1-20
1.1.2 General specifications for MF 7720 S, MF 7722 S, MF 7724 S and MF 7726 S models	1-28
1.1.2.1 Models MF 7700 S Dyna-6	1-28
1.1.2.2 Models MF 7700 S Dyna-VT	1-39
1.2 Forward speeds	1-50
1.2.1 Forward speeds for MF 7714 S, MF 7715 S, MF 7716 S and MF 7718 S models	1-50
1.2.1.1 Forward speed at maximum speed with Dyna-4 40 kph transmission and 20.8R38 tires	1-50
1.2.1.2 Forward speed at maximum speed with Dyna-6 40 kph transmission and 20.8R38 tires	1-51
1.2.1.3 Forward speed at maximum speed with Dyna-6 50 kph transmission and 20.8R38 tires	1-53
1.2.1.4 Forward speed for all models with Dyna-VT transmission	1-54
1.2.2 Forward speeds for , MF 7720 S, MF 7722 S, MF 7724 S, and MF 7726 S models	1-55
1.2.2.1 Forward speed at maximum speed with Dyna-6 40 kph transmission: and 20.8R42 tires	1-55
1.2.2.2 Forward speed at maximum speed with Dyna-6 50 kph transmission: and 20.8R42 tires	1-57
1.2.2.3 Forward speed with Dyna-6 transmission, 40 kph and 50 kph with creeper speed option and 20.8R42 tires	1-59
1.2.2.4 Forward speed for all models with Dyna-VT transmission	1-60
1.3 Dimensions and weights	1-61
1.3.1 Dimensions and weights for MF 7714 S, MF 7715 S, MF 7716 S and MF 7718 S models	1-61
1.3.1.1 Dimensions and weights	1-61
1.3.2 Dimensions and weights for , MF 7720 S, MF 7722 S, MF 7724 S, and MF 7726 S models	1-64
1.3.2.1 Dimensions and weights	1-64
1.4 Attachment points	1-75
1.4.1 Attachment points for MF 7714 S, MF 7715 S, MF 7716 S and MF 7718 S models	1-75
1.4.1.1 Attachment points: Dyna-4/Dyna-6 models without front linkage	1-75
1.4.1.2 Attachment points: Dyna-4/Dyna-6 models with front linkage	1-76
1.4.1.3 Attachment points: Dyna-VT models without front linkage	1-78
1.4.1.4 Attachment points: Dyna-VT models with front linkage	1-79
1.4.2 Attachment points for , MF 7720 S, MF 7722 S, MF 7724 S and MF 7726 S models	1-81
1.4.2.1 Attachment points: Dyna-6 models without front linkage	1-81
1.4.2.2 Attachment points: Dyna-6 models with 4 t front linkage (Imperial: 4.4 US ton)	1-82
1.4.2.3 Attachment points: Dyna-VT models without front linkage	1-84
1.4.2.4 Attachment points: Dyna-VT models with 4 t front linkage (Imperial: 4.4 US ton)	1-85
1.5 capacities	1-87
1.5.1 Capacities for MF 7714 S, MF 7715 S, MF 7716 S and MF 7718 S models	1-87
1.5.1.1 capacities	1-87
1.5.2 Capacities for , MF 7720 S, MF 7722 S, MF 7724 S and MF 7726 S models	1-88
1.5.2.1 Capacities for models with a Tier 3/Stage IIIA engine	1-88
1.5.2.2 Capacities for models with a Tier 4F/Stage IV SCR Technology engine	1-89

1.5.3 Accumulator pressure and volume	1-91
1.6 Tightening torques, retaining compounds and sealing products	1-92
1.6.1 Retaining compounds and sealing products	1-92
1.6.2 Tightening torques for screws and nuts	1-93
1.6.3 Tightening torques for hydraulic unions	1-97
1.7 Units of measurement	1-101
1.7.1 Conversion table	1-101

1.1 General specifications

1.1.1 General specifications for MF 7714 S, MF 7715 S, MF 7716 S and MF 7718 S models

1.1.1.1 Models MF 7700 S Dyna-4

Engine		
Model	MF 7714 S	MF 7715 S
Brand	AGCO Power	
Type	66 AWF-T4F	
Nominal power hp ISO (kW) at an engine speed of 2100 rpm	130 (96)	140 (103)
Maximum power hp ISO (kW) at an engine speed of 1950 rpm	140 (103)	150 (110)
Maximum EPM power hp ISO (kW) at an engine speed of 1950 rpm	165 (121)	175 (129)
Maximum EPM torque (Nm)	675 Nm	732 Nm
Engine displacement (in liters)	6.6	
Piston travel	120 mm	
Piston diameter	108 mm	
Compression ratio	17,8 bar \pm 1 bar	
Number of cylinders	6	
Idle speed, hand brake engaged	750 rpm	
Idle speed, hand brake disengaged	850 rpm	
Nominal speed	2100 rpm	
Maximum speed	2160 rpm	
Engine weight	590 kg	
High-pressure pump brand	Bosch	
Fuel injection type	Common rail CP4.2	
Firing order	1-5-3-6-2-4	
Maximum pressure in the high-pressure system	2000 bar	
Injector brand	Bosch	
Injector type	CRIN 3.20	
Charge pump type	Manual	
Fuel prefilter filtration capacity	10 μ	
Main fuel filter filtration capacity	5 μ	



Suggest:

For more complete manuals. Please go to the home page.

<https://www.ebooklibonline.com>

If the above button click is invalid. Please download this document first, and then click the above link to download the complete manual.

Thank you so much for reading

Engine		
Model	MF 7714 S	MF 7715 S
Low-pressure system pressure at minimum speed	0,5 bar to 8,5 bar	
Low-pressure system pressure at maximum speed	0,5 bar to 8,5 bar	
Recommended oil:	API CJ4 or ACEA E9	
Maximum operating tilt (precautions)	25° pitch	
	20° roll	
Oil/fuel consumption	Maximum 0.2%	
Lubrication system	Gear pump	
Oil cooling system	Oil/water heat exchanger	
Oil pressure at minimum speed	1,5 bar	
Oil pressure at maximum speed	2,5 bar at 5 bar depending on the temperature	
Relief valve adjustment pressure	5 bar (spring pressure)	
Air suction type	Turbocharged with air/air intercooler	
Air preheating type	Grid heater with relay controlled by the ECU	
Number of valves	24	
Valve clearance value	0,35 mm (inlet and exhaust)	
Engine cooling system	Coolant	
Fan type	Vistronic	
Thermostat begins to open at	83 °C	
Coolant temperature	-35 °C to 106 °C	
Air compressor brand for the brake system	Knorr Bremse	
Type of compressor	Piston	
Pressure range:	6,5 bar to 8 bar	
Block preheater	110 or 220 volts	
Fuel preheater	Not available	
Urea preheater	Tank: coolant	
Exhaust fumes recirculation system	Pump module and supply lines: electric	
DOC + SCR system (injection of Diesel Exhaust Fluid (DEF))	DOC with metal substrate (exhaust fumes oxidation catalyzer)	
	SCR Technology with two ceramic substrates (exhaust fume treatment)	
Safety system	NOx sensors at exhaust inlet and outlet	
Device brand	Bosch Denox 2.2+	

Engine		
Model	MF 7714 S	MF 7715 S
Type of control	Engine controller EEM4	
Urea solidification temperature	-11 °C	
Oil vapor recirculation system	Closed system breather (CCV)	
Belt: Air conditioning compressor/left-hand alternator	Poly V belt	
Belt: Fan/right-hand alternator	Poly V belt	
Belt: Air compressor	Poly V belt	

Rear axle transmission	
Model	MF 7714 S, MF 7715 S
Gearbox type	GBA25
Number of ratios	4
Number of ranges	4
Number of gears	16/16
Super creeper gears	14/1
Number of gears with super creeper gears	32/32
Maximum speed	40 km/h
Rear axle type	GPA23
Number of pinion/crown wheel teeth	8/39
Rear axle ratio	27.161
4WD ratio	0.830
Final drive type	Super Heavy Duty (SHD)
Final drive reduction ratio	(64+14)/14
Maximum 4WD clutch torque	206 daNm
Number of 4WD disks	6 disks
Main brake type	Disk
Number of disks per side	1 disk
Braking pressure	-
Parking brake type	Hand brake
Trailer brake type	Hydraulic and pneumatic with built-in antifreeze pump
Pneumatic trailer braking pressure	6,9 bar to 8,3 bar

<https://www.ebooklibonline.com>

Hello dear friend!

Thank you very much for reading.

Enter the link into your browser.

The full manual is available for immediate download.

<https://www.ebooklibonline.com>