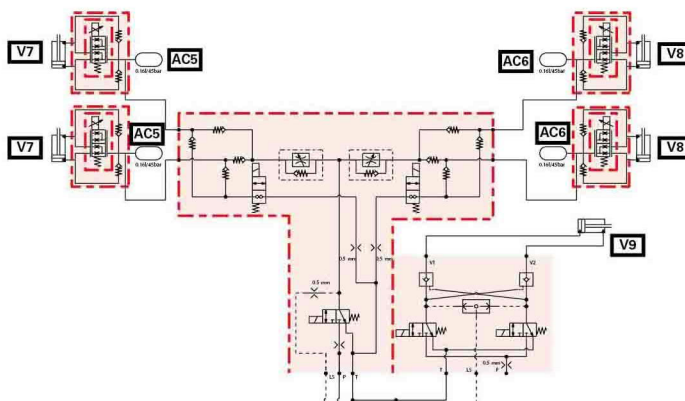
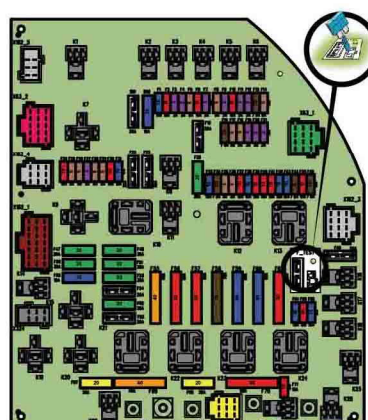


Technician Service Book - MF 6700 S series tractors

Schémas électriques et hydrauliques



Technician Service Book - MF 6700 S series tractors

1 General Information	1-1
1.1 General specifications	1-3
1.1.1 tractors MF 6700 SDyna-4	1-3
1.1.2 Tractors MF 6700 SDyna-6	1-11
1.1.3 MF 6700 S Dyna-VT tractors	1-20
1.2 Forward speeds	1-30
1.2.1 Forward speed with Dyna-4 40 kph transmission and 18.4R38 tires	1-30
1.2.2 Forward speed with Dyna-4 40 kph transmission and 20.8R38 tires	1-30
1.2.3 Forward speed with Dyna-6 40 kph ECO transmission and 20.8R38 tires	1-32
1.2.4 Forward speed with Dyna-6 50 kph transmission and 20.8R38 tires	1-33
1.2.5 Forward speed for all models with transmission in Dyna-VT mode	1-35
1.3 Dimensions and weights	1-37
1.3.1 Dimensions and weights	1-37
1.4 Attachment points	1-41
1.4.1 Attachment points: MF 6712 S / MF 6713 S / MF 6714 S Dyna-4/Dyna-6 models without front linkage	1-41
1.4.2 Attachment points: MF 6712 S / MF 6713 S / MF 6714 S Dyna-4/Dyna-6 models with front linkage	1-43
1.4.3 Attachment points: MF 6715 S / MF 6716 S / MF 6718 S Dyna-4/Dyna-6 models without front linkage	1-45
1.4.4 Attachment points: MF 6715 S / MF 6716 S / MF 6718 S Dyna-4/Dyna-6 models with front linkage	1-47
1.4.5 Attachment points: MF 6713 S / MF 6714 S / MF 6715 S / MF 6716 S / MF 6718 S Dyna-VT models without front linkage:	1-49
1.4.6 Attachment points: MF 6713 S / MF 6714 S / MF 6715 S / MF 6716 S / MF 6718 S Dyna-VT models with front linkage	1-51
1.5 capacities	1-53
1.5.1 capacities	1-53
1.5.2 Accumulator pressure and volume	1-54
1.6 Tightening torques, retaining compounds and sealing products	1-55
1.6.1 Retaining compounds and sealing products	1-55
1.6.2 Tightening torques for screws and nuts	1-56
1.6.3 Tightening torques for hydraulic unions	1-60
1.7 Units of measurement	1-64
1.7.1 Conversion table	1-64
2 Error codes	2-1
2.1 Error codes	2-3
2.1.1 General table of faults	2-3
2.1.2 Indicator light panel	2-6
2.1.3 Indication of faults	2-14
2.1.4 Description of error code format	2-17
2.1.5 Instrument panel error codes Dyna-VT	2-18
2.1.6 Instrument panel error codes Dyna-4/Dyna-6	2-20
2.1.7 AGCO Power Tier 3/Stage IIIA engine and Tier 4F/Stage IV SCR Technology engine error codes	2-21
2.1.8 Dyna-VT transmission error codes	2-36
2.1.9 Transmission error codes Dyna-4/Dyna-6	2-40
2.1.10 ParkLock error codes	2-42

2.1.11	Front axle error codes Dyna-VT	2-43
2.1.12	Front axle error codes for Dyna-4/Dyna-6	2-44
2.1.13	Rear power take-off error codes Dyna-VT	2-44
2.1.14	Power take-off error codes Dyna-4/Dyna-6	2-46
2.1.15	Error codes for the high-pressure braking	2-47
2.1.16	Rear linkage error codes	2-47
2.1.17	Front power lift error codes	2-49
2.1.18	Armrest error codes	2-49
2.1.19	Hydraulic valve error codes	2-50
2.1.20	Air conditioning error codes	2-52
2.1.21	Error codes of the keypad in the pillar	2-53
2.1.22	Suspended cab error codes	2-54
3	Fuse box	3-1
3.1	Fuse box	3-3
3.1.1	Description of the main fuse box	3-3
3.1.2	Description of the secondary fuse box (depending on model)	3-21
3.1.3	Description of additional fuses and relays	3-24
3.1.4	Description of additional fuses/relays specific to the panoramic cab	3-26
3.1.5	Battery isolator	3-29
4	Electrical diagrams	4-1
4.1	Electrical diagrams	4-5
4.1.1	Identification of electrical diagrams	4-5
4.1.2	Identification of electrical connectors from X1 to X500	4-7
4.1.3	Identification of electrical connectors from X501 to X1000	4-19
4.1.4	Identification table for cable colors	4-29
4.1.5	Electrical diagrams	4-31
4.1.5.1	EFD00000_16 - Battery 12 V power supply points	4-31
4.1.5.2	EFD00000_17 - Battery earth points	4-32
4.1.5.3	EFD00100_17 - Dyna-VT 4-wheel drive	4-34
4.1.5.4	EFD00100_18 - Dyna-6 4-wheel drive	4-35
4.1.5.5	EFD00100_19 - Dyna-4 4-wheel drive	4-35
4.1.5.6	EFD00101_17 - Dyna-VT differential lock	4-36
4.1.5.7	EFD00101_18 - Dyna-6 differential lock	4-37
4.1.5.8	EFD00101_19 - Dyna-4 differential lock	4-38
4.1.5.9	EFD00111_41 - Dyna-VT transmission- 1/2	4-39
4.1.5.10	EFD00111_41 - Dyna-VT transmission- 2/2	4-40
4.1.5.11	EFD00111_43 - GTA2520 Dyna-6 Load Sensing transmission Essential - 1/4	4-41
4.1.5.12	EFD00111_43 - GTA2520 Dyna-6 Load Sensing transmission Essential - 2/4	4-42
4.1.5.13	EFD00111_43 - GTA2520 Dyna-6 Load Sensing transmission Efficient/ Exclusive - 3/4	4-43
4.1.5.14	EFD00111_43 - GTA2520 Dyna-6 Load Sensing transmission Efficient/ Exclusive - 4/4	4-44
4.1.5.15	EFD00111_44 - GTA2520 Dyna-6 Open Center transmission Essential - 1/4	4-45
4.1.5.16	EFD00111_44 - GTA2520 Dyna-6 Open Center transmission Essential - 2/4	4-46
4.1.5.17	EFD00111_44 - GTA2520 Dyna-6 Open Center transmission Efficient/ Exclusive - 3/4	4-47
4.1.5.18	EFD00111_44 - GTA2520 Dyna-6 Open Center transmission Efficient/ Exclusive - 4/4	4-48
4.1.5.19	EFD00111_45 - GTA2520 Dyna-4 Load Sensing transmission- 1/2	4-49
4.1.5.20	EFD00111_45 - GTA2520 Dyna-4 Load Sensing transmission- 2/2	4-50
4.1.5.21	EFD00113_7 - Lighter	4-51
4.1.5.22	EFD00114_30 - Radio	4-52

<https://www.ebooklibonline.com>

Hello dear friend!

Thank you very much for reading.

Enter the link into your browser.

The full manual is available for immediate download.

<https://www.ebooklibonline.com>

4.1.5.23	EFD00117_28 - Additional heater	4-53
4.1.5.24	EFD00117_39 - Automatic air conditioning	4-54
4.1.5.25	EFD00117_40 - Manual air conditioning for standard roof	4-55
4.1.5.26	EFD00117_41 - Manual air conditioning for high-visibility roof	4-56
4.1.5.27	EFD00118_9 - DOT Matrix	4-57
4.1.5.28	EFD00119_10 - Rear windscreen wiper	4-58
4.1.5.29	EFD00119_11 - Rear windscreen wiper for tractors with panoramic cab	4-59
4.1.5.30	EFD00120_12 - Front windscreen wiper	4-60
4.1.5.31	EFD00121_17 - Dyna-VT parking brake	4-61
4.1.5.32	EFD00121_18 - Dyna-6 parking brake	4-62
4.1.5.33	EFD00121_19 - Dyna-4 parking brake	4-63
4.1.5.34	EFD00122_8 - Dyna-VT fuel gage	4-64
4.1.5.35	EFD00122_9 - Dyna-4/Dyna-6 fuel gage	4-65
4.1.5.36	EFD00123 - C3000	4-66
4.1.5.37	EFD00123_24 - Datatronic CCD	4-67
4.1.5.38	EFD00125_10 - Cab light	4-68
4.1.5.39	EFD00126_11 - Extreme cold weather heating with automatic air conditioning	4-69
4.1.5.40	EFD00126_12 - Extreme cold weather heating with manual air conditioning for tractors with standard roof	4-70
4.1.5.41	EFD00126_13 - Extreme cold weather heating with manual air conditioning for tractors with high-visibility roof	4-71
4.1.5.42	EFD00127_8 - Left-hand pillar 12 V socket	4-72
4.1.5.43	EFD00128_17 - EAME/ISO cab current socket	4-73
4.1.5.44	EFD00128_18 - NA/SAE cab current socket	4-74
4.1.5.45	EFD00128_20 - EAME/ISO cab current socket_1/2	4-75
4.1.5.46	EFD00128_20 - EAME/ISO cab current socket_2/2	4-76
4.1.5.47	EFD00128_21 - NA/SAE cab current socket_1/2	4-77
4.1.5.48	EFD00128_21 - NA/SAE cab current socket_2/2	4-78
4.1.5.49	EFD00129_12 - Diagnostics connector_1/2	4-79
4.1.5.50	EFD00129_12 - Diagnostics connector_2/2	4-80
4.1.5.51	EFD00129_13 - Diagnostics connector_1/2 with cab harnesses ACW039162 and ACW039167	4-82
4.1.5.52	EFD00129_13 - Diagnostics connector_2/2 with cab harnesses ACW039162 and ACW039167	4-82
4.1.5.53	EFD00130_5 - Dyna-VT radar	4-84
4.1.5.54	EFD00130_6 - Dyna-6 and Dyna-4 radar	4-84
4.1.5.55	EFD00131_48 - Dyna-6 CAN network Efficient/Exclusive - tractor	4-85
4.1.5.56	EFD00131_48 - Dyna-6 CAN network Efficient/Exclusive - engine	4-86
4.1.5.57	EFD00131_48 - Dyna-6 CAN network Efficient/Exclusive - linkage	4-87
4.1.5.58	EFD00131_48 - Dyna-6 CAN network Efficient/Exclusive - ISOBUS	4-88
4.1.5.59	EFD00131_48 - Dyna-6 CAN network Essential - tractor	4-89
4.1.5.60	EFD00131_48 - Dyna-6 CAN network Essential - engine	4-90
4.1.5.61	EFD00131_48 - Dyna-6 CAN network - AGCO Power	4-91
4.1.5.62	EFD00131_48 - Dyna-6 CAN network Essential - ISOBUS	4-92
4.1.5.63	EFD00131_49 - Dyna-VT CAN network - tractor	4-93
4.1.5.64	EFD00131_49 - Dyna-VT CAN network - linkage	4-94
4.1.5.65	EFD00131_49 - Dyna-VT CAN network - engine	4-95
4.1.5.66	EFD00131_49 - Dyna-VT CAN network - ISOBUS	4-96
4.1.5.67	EFD00131_49 - Dyna-VT CAN network - AGCO Power	4-97
4.1.5.68	EFD00132_7 - Electric rear-view mirrors	4-98
4.1.5.69	EFD00135_11 - Ventilation for tractors with standard roof	4-99
4.1.5.70	EFD00135_12 - Ventilation for tractors with high-visibility roof	4-100
4.1.5.71	EFD00136_59 - EAME direction indicators and flashing warning lights - standard roof	4-101
4.1.5.72	EFD00136_60 - NA direction indicators and flashing warning lights	4-102
4.1.5.73	EFD00136_61 - EAME direction indicators and flashing warning lights - high-visibility roof	4-103

4.1.5.74	EFD00137_23 - Number plate lighting (except Italy)	4-104
4.1.5.75	EFD00137_24 - Italian number plate lighting	4-105
4.1.5.76	EFD00138_35 - NA side lights	4-106
4.1.5.77	EFD00138_42 - EAME side lights	4-107
4.1.5.78	EFD00139_8 - Dyna-VT reversing light	4-108
4.1.5.79	EFD00139_9 - Dyna-6 reversing light	4-109
4.1.5.80	EFD00139_12 - Dyna-4 reversing light	4-110
4.1.5.81	EFD00140_56 - High beam lamps and low beam lamps on grille + hand rail	4-111
4.1.5.82	EFD00140_57 - High beam lamps and low beam lamps on grille	4-112
4.1.5.83	EFD00141_105 - EAME work lights	4-113
4.1.5.84	EFD00141_106 - NA work lights	4-114
4.1.5.85	EFD00142_12 - Dyna-VT brake lights	4-115
4.1.5.86	EFD00142_13 - Dyna-6 brake lights	4-116
4.1.5.87	EFD00142_14 - Dyna-4 brake lights	4-117
4.1.5.88	EFD00143_27 - Rotary beacon	4-118
4.1.5.89	EFD00144_8 - Control module	4-119
4.1.5.90	EFD00145_13 - NA trailer connector	4-120
4.1.5.91	EFD00145_14 - EAME trailer connector	4-121
4.1.5.92	EFD00146_9 - Automatic air conditioning back-lighting	4-122
4.1.5.93	EFD00146_10 - Manual air conditioning back-lighting	4-123
4.1.5.94	EFD00148_13 - Audible alarm	4-124
4.1.5.95	EFD00150_10 - Air filter vacuum sensor	4-125
4.1.5.96	EFD00151_33 - AGCO Power EEM unit power supply (49 AWF engine)	4-126
4.1.5.97	EFD00151_34 - AGCO Power engine electronic injection for Efficient and Exclusive tractor versions (49 AWF engine)	4-127
4.1.5.98	EFD00151_35 - AGCO Power engine electronic injection for Essential tractor versions (49 AWF engine)	4-128
4.1.5.99	EFD00152_19 - Suspended front axle (for MF 6700 S models)	4-129
4.1.5.100	EFD00153_20 - AGCO Power preheating power supply (66/74 CW-3 and 49AWF engine)	4-130
4.1.5.101	EFD00154_6 - Fuel preheater	4-131
4.1.5.102	EFD00157_6 - Vistronic Tier 4F/Stage IV SCR Technology engine	4-132
4.1.5.103	EFD00159_18 - Dyna-VT hydraulic spool valves	4-133
4.1.5.104	EFD00159_19 - Dyna-6 hydraulic spool valves	4-134
4.1.5.105	EFD00160_29 - Dyna-VT Dual Control and rear linkage	4-135
4.1.5.106	EFD00161_13 - Front linkage	4-136
4.1.5.107	EFD00162_11 - Dyna-VT Dual Control linkage and trailed implements (TIC)	4-137
4.1.5.108	EFD00162_12 - Dyna-6 Dual Control linkage and trailed implements (TIC)	4-138
4.1.5.109	EFD00166_2 - Side windscreen wiper for tractors with panoramic cab	4-139
4.1.5.110	EFD00167_2 - Triflash for tractors with panoramic cab	4-140
4.1.5.111	EFD00168_2 - Rear fog light for tractors with panoramic cab	4-141
4.1.5.112	EFD00170_3 - High-pressure braking Dyna-6	4-142
4.1.5.113	EFD00170_4 - High-pressure braking Dyna-4	4-143
4.1.5.114	EFD00172_6 - Front accessory connection socket_1/2	4-144
4.1.5.115	EFD00172_6 - Front accessory connection socket_2/2	4-145
4.1.5.116	EFD00173_7 - Water-in-fuel sensor of the Tier 4F/Stage IV SCR Technology engine	4-146
4.1.5.117	EFD00174_20 - Dyna-VT air brake with ParkLock - 1/2	4-147
4.1.5.118	EFD00174_20 - Dyna-VT air brake without ParkLock - 2/2	4-148
4.1.5.119	EFD00174_21 - Dyna-6 air brake with ParkLock - 1/2	4-149
4.1.5.120	EFD00174_21 - Dyna-6 air brake without ParkLock - 2/2	4-150
4.1.5.121	EFD00174_23 - Dyna-4 air brake	4-151
4.1.5.122	EFD00175 - Tier4f/Stage IV AGCO Power engine_1/3	4-152
4.1.5.123	EFD00175 - AGCO Power engine 49/66/74/84 AWF_2/3	4-153

4.1.5.124	EFD00175 - AGCO Power engine 49/66/74/84 AWF_3/3	4-154
4.1.5.125	EFD00176 - LoaderALO	4-155
4.1.5.126	EFD00176_14 - Dyna-6 front set	4-156
4.1.5.127	EFD00176_16 - Dyna-VT front set	4-157
4.1.5.128	EFD00184_8 - AgCommand™	4-158

5 Harnesses 5-1

5.1 Harnesses 5-7

5.1.1	Identification of harnesses	5-7
5.1.2	Identification table for cable colors	5-10
5.1.3	Harnesses	5-13
5.1.3.1	FAI200 - Engine harness - ACW061250_1/4	5-13
5.1.3.2	FAI200 - Engine harness - ACW061250_2/4	5-14
5.1.3.3	FAI200 - Engine harness - ACW061250_3/4	5-15
5.1.3.4	FAI200 - Engine harness - ACW061250_4/4	5-16
5.1.3.5	FAI200 - Engine harness - ACW187881_1/4	5-17
5.1.3.6	FAI200 - Engine harness - ACW187881_2/4	5-18
5.1.3.7	FAI200 - Engine harness - ACW187881_3/4	5-19
5.1.3.8	FAI200 - Engine harness - ACW187881_4/4	5-20
5.1.3.9	FAI201 - Front headlights harness - 4388041_1/2	5-21
5.1.3.10	FAI201 - Front headlights harness - 4388041_2/2	5-22
5.1.3.11	FAI201 - Front headlights harness - 4388042_1/2	5-23
5.1.3.12	FAI201 - Front headlights harness - 4388042_2/2	5-24
5.1.3.13	FAI201 - Front headlights harness - ACW219184_1/2	5-25
5.1.3.14	FAI201 - Front headlights harness - ACW219184_2/2	5-26
5.1.3.15	FAI201 - Front headlights harness - ACW227577_1/2	5-27
5.1.3.16	FAI201 - Front headlights harness - ACW227577_2/2	5-28
5.1.3.17	FAI201 - Front headlights harness - ACW380579_1/2	5-29
5.1.3.18	FAI201 - Front headlights harness - ACW380579_2/2	5-30
5.1.3.19	FAI203 - Drive train harness Dyna-VT - 4389481_1/3	5-31
5.1.3.20	FAI203 - Drive train harness Dyna-VT - 4389481_2/3	5-32
5.1.3.21	FAI203 - Drive train harness Dyna-VT - 4389481_3/3	5-33
5.1.3.22	FAI203 - Drive train harness Dyna-4-Dyna-6 GBA2520 - 4390259-1/3	5-34
5.1.3.23	FAI203 - Drive train harness Dyna-4-Dyna-6 GBA2520 - 4390259-2/3	5-35
5.1.3.24	FAI203 - Drive train harness Dyna-4-Dyna-6 GBA2520 - 4390259-3/3	5-36
5.1.3.25	FAI203 - Drive train harness Dyna-4/Dyna-6 GTA2520 - ACW104556_1/3	5-37
5.1.3.26	FAI203 - Drive train harness Dyna-4/Dyna-6 GTA2520 - ACW104556_2/3	5-38
5.1.3.27	FAI203 - Drive train harness Dyna-4/Dyna-6 GTA2520 - ACW104556_3/3	5-39
5.1.3.28	FAI205 - Electrohydraulic valves harness - 4292090	5-40
5.1.3.29	FAI205 - Electrohydraulic valves harness - 4292091	5-41
5.1.3.30	FAI205 - Electrohydraulic valves harness - 4292093	5-42
5.1.3.31	FAI205 - Electrohydraulic valves harness - 4387694	5-43
5.1.3.32	FAI208 - Linkage with Dual Control and TIC harness - 4387797_1/2	5-44
5.1.3.33	FAI208 - Linkage with Dual Control and TIC harness - 4387797_2/2	5-45
5.1.3.34	FAI210 - Cab drive train harness Dyna-VT short console - 4390243_1/9	5-46
5.1.3.35	FAI210 - Cab drive train harness Dyna-VT short console - 4390243_2/9	5-47
5.1.3.36	FAI210 - Cab drive train harness Dyna-VT short console - 4390243_3/9	5-48
5.1.3.37	FAI210 - Cab drive train harness Dyna-VT short console - 4390243_4/9	5-49
5.1.3.38	FAI210 - Cab drive train harness Dyna-VT short console - 4390243_5/9	5-50
5.1.3.39	FAI210 - Cab drive train harness Dyna-VT short console - 4390243_6/9	5-51
5.1.3.40	FAI210 - Cab drive train harness Dyna-VT short console - 4390243_7/9	5-52
5.1.3.41	FAI210 - Cab drive train harness Dyna-VT short console - 4390243_8/9	5-53
5.1.3.42	FAI210 - Cab drive train harness Dyna-VT short console - 4390243_9/9	5-54
5.1.3.43	FAI210 - Cab drive train harness Dyna-4 municipal - 4391826_1/8	5-55
5.1.3.44	FAI210 - Cab drive train harness Dyna-4 municipal - 4391826_2/8	5-56

5.1.3.45 FAI210 - Cab drive train harness Dyna-4 municipal - 4391826_3/8 5-57

5.1.3.46 FAI210 - Cab drive train harness Dyna-4 municipal - 4391826_4/8 5-58

5.1.3.47 FAI210 - Cab drive train harness Dyna-4 municipal - 4391826_5/8 5-59

5.1.3.48 FAI210 - Cab drive train harness Dyna-4 municipal - 4391826_6/8 5-60

5.1.3.49 FAI210 - Cab drive train harness Dyna-4 municipal - 4391826_7/8 5-61

5.1.3.50 FAI210 - Cab drive train harness Dyna-4 municipal - 4391826_8/8 5-62

5.1.3.51 FAI210 - Cab drive train harness Dyna-6 municipal - 4392642_1/9 5-63

5.1.3.52 FAI210 - Cab drive train harness Dyna-6 municipal - 4392642_2/9 5-64

5.1.3.53 FAI210 - Cab drive train harness Dyna-6 municipal - 4392642_3/9 5-65

5.1.3.54 FAI210 - Cab drive train harness Dyna-6 municipal - 4392642_4/9 5-66

5.1.3.55 FAI210 - Cab drive train harness Dyna-6 municipal - 4392642_5/9 5-67

5.1.3.56 FAI210 - Cab drive train harness Dyna-6 municipal - 4392642_6/9 5-68

5.1.3.57 FAI210 - Cab drive train harness Dyna-6 municipal - 4392642_7/9 5-69

5.1.3.58 FAI210 - Cab drive train harness Dyna-6 municipal - 4392642_8/9 5-70

5.1.3.59 FAI210 - Cab drive train harness Dyna-6 municipal - 4392642_9/9 5-71

5.1.3.60 FAI210 - Cab drive train harness Dyna-6 short console - ACW005780_1/8 5-72

5.1.3.61 FAI210 - Cab drive train harness Dyna-6 short console - ACW005780_2/8 5-73

5.1.3.62 FAI210 - Cab drive train harness Dyna-6 short console - ACW005780_3/8 5-74

5.1.3.63 FAI210 - Cab drive train harness Dyna-6 short console - ACW005780_4/8 5-75

5.1.3.64 FAI210 - Cab drive train harness Dyna-6 short console - ACW005780_5/8 5-76

5.1.3.65 FAI210 - Cab drive train harness Dyna-6 short console - ACW005780_6/8 5-77

5.1.3.66 FAI210 - Cab drive train harness Dyna-6 short console - ACW005780_7/8 5-78

5.1.3.67 FAI210 - Cab drive train harness Dyna-6 short console - ACW005780_8/8 5-79

5.1.3.68 FAI210 - Cab drive train harness Dyna-4 long console - ACW017847_1/7 5-80

5.1.3.69 FAI210 - Cab drive train harness Dyna-4 long console - ACW017847_2/7 5-81

5.1.3.70 FAI210 - Cab drive train harness Dyna-4 long console - ACW017847_3/7 5-82

5.1.3.71 FAI210 - Cab drive train harness Dyna-4 long console - ACW017847_4/7 5-83

5.1.3.72 FAI210 - Cab drive train harness Dyna-4 long console - ACW017847_5/7 5-84

5.1.3.73 FAI210 - Cab drive train harness Dyna-4 long console - ACW017847_6/7 5-85

5.1.3.74 FAI210 - Cab drive train harness Dyna-4 long console - ACW017847_7/7 5-86

5.1.3.75 FAI210 - Cab drive train harness Dyna-VT short console - ACW039162_1/9 5-87

5.1.3.76 FAI210 - Cab drive train harness Dyna-VT short console - ACW039162_2/9 5-88

5.1.3.77 FAI210 - Cab drive train harness Dyna-VT short console - ACW039162_3/9 5-89

5.1.3.78 FAI210 - Cab drive train harness Dyna-VT short console - ACW039162_4/9 5-90

5.1.3.79 FAI210 - Cab drive train harness Dyna-VT short console - ACW039162_5/9 5-91

5.1.3.80 FAI210 - Cab drive train harness Dyna-VT short console - ACW039162_6/9 5-92

5.1.3.81	FAI210 - Cab drive train harness Dyna-VT short console - ACW039162_7/9	5-93
5.1.3.82	FAI210 - Cab drive train harness Dyna-VT short console - ACW039162_8/9	5-94
5.1.3.83	FAI210 - Cab drive train harness Dyna-VT short console - ACW039162_9/9	5-95
5.1.3.84	FAI210 - Cab drive train harness Dyna-6 short console - ACW039167_1/9	5-96
5.1.3.85	FAI210 - Cab drive train harness Dyna-6 short console - ACW039167_2/9	5-97
5.1.3.86	FAI210 - Cab drive train harness Dyna-6 short console - ACW039167_3/9	5-98
5.1.3.87	FAI210 - Cab drive train harness Dyna-6 short console - ACW039167_4/9	5-99
5.1.3.88	FAI210 - Cab drive train harness Dyna-6 short console - ACW039167_5/9	5-100
5.1.3.89	FAI210 - Cab drive train harness Dyna-6 short console - ACW039167_6/9	5-101
5.1.3.90	FAI210 - Cab drive train harness Dyna-6 short console - ACW039167_7/9	5-102
5.1.3.91	FAI210 - Cab drive train harness Dyna-6 short console - ACW039167_8/9	5-103
5.1.3.92	FAI210 - Cab drive train harness Dyna-6 short console - ACW039167_9/9	5-104
5.1.3.93	FAI210 - Cab drive train harness Dyna-6 short console - ACW234544_1/10	5-105
5.1.3.94	FAI210 - Cab drive train harness Dyna-6 short console - ACW234544_2/10	5-106
5.1.3.95	FAI210 - Cab drive train harness Dyna-6 short console - ACW234544_3/10	5-107
5.1.3.96	FAI210 - Cab drive train harness Dyna-6 short console - ACW234544_4/10	5-108
5.1.3.97	FAI210 - Cab drive train harness Dyna-6 short console - ACW234544_5/10	5-109
5.1.3.98	FAI210 - Cab drive train harness Dyna-6 short console - ACW234544_6/10	5-110
5.1.3.99	FAI210 - Cab drive train harness Dyna-6 short console - ACW234544_7/10	5-111
5.1.3.100	FAI210 - Cab drive train harness Dyna-6 short console - ACW234544_8/10	5-112
5.1.3.101	FAI210 - Cab drive train harness Dyna-6 short console - ACW234544_9/10	5-113
5.1.3.102	FAI210 - Cab drive train harness Dyna-6 short console - ACW234544_10/10	5-114
5.1.3.103	FAI210 - Cab drive train harness Dyna-4 municipal - ACW242339_1/10	5-115
5.1.3.104	FAI210 - Cab drive train harness Dyna-4 municipal - ACW242339_2/10	5-116
5.1.3.105	FAI210 - Cab drive train harness Dyna-4 municipal - ACW242339_3/10	5-117
5.1.3.106	FAI210 - Cab drive train harness Dyna-4 municipal - ACW242339_4/10	5-118
5.1.3.107	FAI210 - Cab drive train harness Dyna-4 municipal - ACW242339_5/10	5-119
5.1.3.108	FAI210 - Cab drive train harness Dyna-4 municipal - ACW242339_6/10	5-120
5.1.3.109	FAI210 - Cab drive train harness Dyna-4 municipal - ACW242339_7/10	5-121
5.1.3.110	FAI210 - Cab drive train harness Dyna-4 municipal - ACW242339_8/10	5-122
5.1.3.111	FAI210 - Cab drive train harness Dyna-4 municipal - ACW242339_9/10	5-123
5.1.3.112	FAI210 - Cab drive train harness Dyna-4 municipal - ACW242339_10/10	5-124
5.1.3.113	FAI210 - Cab drive train harness Dyna-VT short console - ACW243229_1/10	5-125

5.1.3.114 FAI210 - Cab drive train harness Dyna-VT short console - ACW243229_2/10 5-126

5.1.3.115 FAI210 - Cab drive train harness Dyna-VT short console - ACW243229_3/10 5-127

5.1.3.116 FAI210 - Cab drive train harness Dyna-VT short console - ACW243229_4/10 5-128

5.1.3.117 FAI210 - Cab drive train harness Dyna-VT short console - ACW243229_5/10 5-129

5.1.3.118 FAI210 - Cab drive train harness Dyna-VT short console - ACW243229_6/10 5-130

5.1.3.119 FAI210 - Cab drive train harness Dyna-VT short console - ACW243229_7/10 5-131

5.1.3.120 FAI210 - Cab drive train harness Dyna-VT short console - ACW243229_8/10 5-132

5.1.3.121 FAI210 - Cab drive train harness Dyna-VT short console - ACW243229_9/10 5-133

5.1.3.122 FAI210 - Cab drive train harness Dyna-VT short console - ACW243229_10/10 5-134

5.1.3.123 FAI210 - Cab drive train harness Dyna-6 municipal - ACW281070_1/11 5-135

5.1.3.124 FAI210 - Cab drive train harness Dyna-6 municipal - ACW281070_2/11 5-136

5.1.3.125 FAI210 - Cab drive train harness Dyna-6 municipal - ACW281070_3/11 5-137

5.1.3.126 FAI210 - Cab drive train harness Dyna-6 municipal - ACW281070_4/11 5-138

5.1.3.127 FAI210 - Cab drive train harness Dyna-6 municipal - ACW281070_5/11 5-139

5.1.3.128 FAI210 - Cab drive train harness Dyna-6 municipal - ACW281070_6/11 5-140

5.1.3.129 FAI210 - Cab drive train harness Dyna-6 municipal - ACW281070_7/11 5-141

5.1.3.130 FAI210 - Cab drive train harness Dyna-6 municipal - ACW281070_8/11 5-142

5.1.3.131 FAI210 - Cab drive train harness Dyna-6 municipal - ACW281070_9/11 5-143

5.1.3.132 FAI210 - Cab drive train harness Dyna-6 municipal - ACW281070_10/11 5-144

5.1.3.133 FAI210 - Cab drive train harness Dyna-6 municipal - ACW281070_11/11 5-145

5.1.3.134 FAI210 - Cab drive train harness Dyna-6 long console - ACW285998_1/9 5-146

5.1.3.135 FAI210 - Cab drive train harness Dyna-6 long console - ACW285998_2/9 5-147

5.1.3.136 FAI210 - Cab drive train harness Dyna-6 long console - ACW285998_3/9 5-148

5.1.3.137 FAI210 - Cab drive train harness Dyna-6 long console - ACW285998_4/9 5-149

5.1.3.138 FAI210 - Cab drive train harness Dyna-6 long console - ACW285998_5/9 5-150

5.1.3.139 FAI210 - Cab drive train harness Dyna-6 long console - ACW285998_6/9 5-151

5.1.3.140 FAI210 - Cab drive train harness Dyna-6 long console - ACW285998_7/9 5-152

5.1.3.141 FAI210 - Cab drive train harness Dyna-6 long console - ACW285998_8/9 5-153

5.1.3.142 FAI210 - Cab drive train harness Dyna-6 long console - ACW285998_9/9 5-154

5.1.3.143 FAI212 - Lighting harness Municipal cab - 4380685_1/3 5-155

5.1.3.144 FAI212 - Lighting harness Municipal cab - 4380685_2/3 5-156

5.1.3.145 FAI212 - Lighting harness Municipal cab - 4380685_3/3 5-157

5.1.3.146 FAI212 - Lighting harness EAME - 4389032_1/3 5-158

5.1.3.147 FAI212 - Lighting harness EAME - 4389032_2/3 5-159

5.1.3.148 FAI212 - Lighting harness EAME - 4389032_3/3 5-160

5.1.3.149 FAI212 - Lighting harness NA - 4389034_1/3 5-161

5.1.3.150 FAI212 - Lighting harness NA - 4389034_2/3 5-162

5.1.3.151 FAI212 - Lighting harness NA - 4389034_3/3 5-163

5.1.3.152	FAI212 - Lighting harness EAME - ACW125945_1/3	5-164
5.1.3.153	FAI212 - Lighting harness EAME - ACW125945_2/3	5-165
5.1.3.154	FAI212 - Lighting harness EAME - ACW125945_3/3	5-166
5.1.3.155	FAI212 - Lighting harness municipal cab - ACW147899_1/3	5-167
5.1.3.156	FAI212 - Lighting harness municipal cab - ACW147899_2/3	5-168
5.1.3.157	FAI212 - Lighting harness municipal cab - ACW147899_3/3	5-169
5.1.3.158	FAI219 - Cab interior current socket harness - 4290574_1/2	5-170
5.1.3.159	FAI219 - Cab interior current socket harness - 4290574_2/2	5-171
5.1.3.160	FAI219 - Cab interior current socket harness - 4290575_1/2	5-172
5.1.3.161	FAI219 - Cab interior current socket harness - 4290575_2/2	5-173
5.1.3.162	FAI223 - Roof harness standard with manual air conditioning - 4353057_1/3	5-174
5.1.3.163	FAI223 - Roof harness standard with manual air conditioning - 4353057_2/3	5-175
5.1.3.164	FAI223 - Roof harness standard with manual air conditioning - 4353057_3/3	5-176
5.1.3.165	FAI223 - Roof harness_High visibility - 4375395_1/3	5-177
5.1.3.166	FAI223 - Roof harness_High visibility_4375395_2/3	5-178
5.1.3.167	FAI223 - Roof harness_High visibility_4375395_3/3	5-179
5.1.3.168	FAI223 - Roof harness_standard_municipal_cab_ACW001936_1/3	5-180
5.1.3.169	FAI223 - Roof harness_standard_municipal_cab_ACW001936_2/3	5-181
5.1.3.170	FAI223 - Roof harness_standard_municipal_cab_ACW001936_3/3	5-182
5.1.3.171	FAI225 - Electric rear-view mirror harness - 4352622_1/2	5-183
5.1.3.172	FAI225 - Electric rear-view mirror harness - 4352622_2/2	5-184
5.1.3.173	FAI227 - Roof harness with automatic air conditioning - 4352621_1/3	5-185
5.1.3.174	FAI227 - Roof harness with automatic air conditioning - 4352621_2/3	5-186
5.1.3.175	FAI227 - Roof harness with automatic air conditioning - 4352621_3/3	5-187
5.1.3.176	FAI228 - Number plate lighting harness - 4353107_1/2	5-188
5.1.3.177	FAI228 - Number plate lighting harness - 4353107_2/2	5-189
5.1.3.178	FAI228 - Number plate lighting harness - 4357222_1/2	5-190
5.1.3.179	FAI228 - Number plate lighting harness - 4357222_2/2	5-191
5.1.3.180	FAI243 - Circuit breaker harness - ACW207512_1/2	5-192
5.1.3.181	FAI243 - Circuit breaker harness - ACW207512_2/2	5-193
5.1.3.182	FAI263 - Auto-Guide™ cab adapter harness - ACW216732_1/2	5-194
5.1.3.183	FAI263 - Auto-Guide™ cab adapter harness - ACW216732_2/2	5-195
5.1.3.184	FAI264 - Auto-Guide™ roof adapter harness - ACW215610_1/2	5-196
5.1.3.185	FAI264 - Auto-Guide™ roof adapter harness - ACW215610_2/2	5-197
5.1.3.186	FAI245 - Left-hand linkage external controls harness - 4348463_1/2	5-198
5.1.3.187	FAI245 - Left-hand linkage external controls harness - 4348463_2/2	5-199
5.1.3.188	FAI253 - Hand rail harness - 4390260_1/2	5-200
5.1.3.189	FAI253 - Hand rail harness - 4390260_2/2	5-201
5.1.3.190	FAI253 - Hand rail harness - 4390262_1/2	5-202
5.1.3.191	FAI253 - Hand rail harness - 4390262_2/2	5-203
5.1.3.192	FAI261 - Isobus harness - 4353130_2/2	5-204
5.1.3.193	FAI261 - Isobus harness - 4353130_1/2	5-205
5.1.3.194	FAI261 - Isobus harness - 4353133	5-206
5.1.3.195	FAI262 - Auto-Guide™ engine harness - 4296810_1/2	5-207
5.1.3.196	FAI262 - Auto-Guide™ engine harness - 4296810_2/2	5-208
5.1.3.197	FAI263 - Auto-Guide™ cab adapter harness - 4353936_1/2	5-209
5.1.3.198	FAI263 - Auto-Guide™ cab adapter harness - 4353936_2/2	5-210
5.1.3.199	FAI264 - Auto-Guide™ roof adapter harness - ACW214003_1/2	5-211
5.1.3.200	FAI264 - Auto-Guide™ roof adapter harness - ACW214003_2/2	5-212
5.1.3.201	FAI265 - Air brake harness Dyna-VT - ACW016912_1/2	5-213
5.1.3.202	FAI265 - Air brake harness Dyna-VT - ACW016912_2/2	5-214
5.1.3.203	FAI265 - Air brake harness Dyna-6- ACW034317_1/2	5-215
5.1.3.204	FAI265 - Air brake harness Dyna-6- ACW034317_2/2	5-216
5.1.3.205	FAI265 - Air brake harness - ACW125716_1/2	5-217
5.1.3.206	FAI265 - Air brake harness - ACW125716_2/2	5-218

5.1.3.207	FAI272 - Suspended cab harness - ACW003763_1/2	5-219
5.1.3.208	FAI272 - Suspended cab harness - ACW003763_2/2	5-220
5.1.3.209	FAI272 - Suspended cab harness Dyna-6 - ACW039185_1/2	5-221
5.1.3.210	FAI272 - Suspended cab harness Dyna-6 - ACW039185_2/2	5-222
5.1.3.211	FAI272 - Suspended cab harness Dyna-VT - ACW060395_1/2	5-223
5.1.3.212	FAI272 - Suspended cab harness Dyna-VT - ACW060395_2/2	5-224
5.1.3.213	FAI273 - Front linkage harness with power socket - 4353047_1/2 . . .	5-225
5.1.3.214	FAI273 - Front linkage harness with power socket - 4353047_2/2 . . .	5-226
5.1.3.215	FAI273 - Front linkage harness without power socket - 4353048_1/2 .	5-227
5.1.3.216	FAI273 - Front linkage harness without power socket - 4353048_2/2 .	5-228
5.1.3.217	FAI283 - TopDock harness - 4377536_1/2	5-229
5.1.3.218	FAI283 - TopDock harness - 4377536_2/2	5-230
5.1.3.219	FAI287 - ALO loader harness external without multi-function armrest - 4378794_1/2	5-231
5.1.3.220	FAI287 - ALO loader harness external without multi-function armrest - 4378794_2/2	5-232
5.1.3.221	FAI287 - ALO loader harness internal without multi-function armrest - 4378879_1/2	5-233
5.1.3.222	FAI287 - ALO loader harness internal without multi-function armrest - 4378879_2/2	5-234
5.1.3.223	FAI290 - Non-Isobus implement connector harness - 4296266_1/2 . .	5-235
5.1.3.224	FAI290 - Non-Isobus implement connector harness - 4296266_2/2 . .	5-236
5.1.3.225	FAI292 - NA direction indicator harness - 4350987	5-237
5.1.3.226	FAI292 - NA direction indicator harness - 4355519_1/2	5-238
5.1.3.227	FAI292 - NA direction indicator harness - 4355519_2/2	5-239
5.1.3.228	FAI292 - NA direction indicator harness - 4376780_1/2	5-240
5.1.3.229	FAI292 - NA direction indicator harness - 4376780_2/2	5-241
5.1.3.230	FAI293 - EAME direction indicator harness - 4350988	5-242
5.1.3.231	FAI294 - Additional heater harness - 4299327_1/2	5-243
5.1.3.232	FAI294 - Additional heater harness - 4299327_2/2	5-244
5.1.3.233	FAI293 - EAME direction indicator harness - 4355520_1/2	5-245
5.1.3.234	FAI293 - EAME direction indicator harness - 4355520_2/2	5-246
5.1.3.235	FAI300 - Air conditioning shunt harness - 4353106	5-247
5.1.3.236	FAI305 - Engine exhaust harness - 4348876	5-248
5.1.3.237	FAI307 - Datatronic 4 harness - 4353638_1/2	5-249
5.1.3.238	FAI307 - Datatronic 4 harness - 4353638_2/2	5-250
5.1.3.239	FAI307 - Datatronic 4 harness - 4390934_1/2	5-251
5.1.3.240	FAI307 - Datatronic 4 harness - 4390934_2/2	5-252
5.1.3.241	FAI307 - Datatronic 4 harness - ACW209580_1/2	5-253
5.1.3.242	FAI307 - Datatronic 4 harness - ACW209580_2/2	5-254
5.1.3.243	FAI307 - Datatronic 5 harness - ACW352676_1/2	5-255
5.1.3.244	FAI307 - Datatronic 5 harness - ACW352676_2/2	5-256
5.1.3.245	FAI310 - Battery/battery isolator negative cable harness - 4389477 . .	5-257
5.1.3.246	FAI311 - Battery/starter positive cable harness - ACW024867	5-258
5.1.3.247	FAI312 - Cab/starter negative cable harness - ACW024869	5-259
5.1.3.248	FAI313 - Cab/battery isolator negative cable harness - 4389475	5-260
5.1.3.249	FAI314 - Alternator harness - ACW032934_1/2	5-261
5.1.3.250	FAI314 - Alternator harness - ACW032934_2/2	5-262
5.1.3.251	FAI317 - Vistronic harness - 4392053_1/2	5-263
5.1.3.252	FAI317 - Vistronic harness - 4392053_2/2	5-264
5.1.3.253	FAI321 - GSPTO harness - ACW008066_1/2	5-265
5.1.3.254	FAI321 - GSPTO harness - ACW008066_2/2	5-266
5.1.3.255	FAI323 - Hydraulic safety harness Load Sensing - 4355616_1/2	5-267
5.1.3.256	FAI323 - Hydraulic safety harness Load Sensing - 4355616_2/2	5-268
5.1.3.257	FAI325 - Power take-off electric selector harness - 4377601_1/2	5-269
5.1.3.258	FAI325 - Power take-off electric selector harness - 4377601_2/2	5-270
5.1.3.259	FAI327 - GPA 20 to GPA 20+ adapter harness - 4377849_1/2	5-271
5.1.3.260	FAI327 - GPA 20 to GPA 20+ adapter harness - 4377849_2/2	5-272

5.1.3.261	FAI340 - Battery/fuse box positive cable harness - 4347791_1/2	5-273
5.1.3.262	FAI340 - Battery/fuse box positive cable harness - 4347791_2/2	5-274
5.1.3.263	FAI340 - Battery/fuse box positive cable harness - ACW029172	5-275
5.1.3.264	FAI354 - External loader harness - 4374651_1/2	5-276
5.1.3.265	FAI354 - External loader harness - 4374651_2/2	5-277
5.1.3.266	FAI353 - Loader harness - ACW138345_1/2	5-278
5.1.3.267	FAI353 - Loader harness - ACW138345_1/2	5-279
5.1.3.268	FAI355 - Harness for the left-hand alternator and grid heater - ACW032931_1/2	5-280
5.1.3.269	FAI355 - Harness for the left-hand alternator and grid heater - ACW032931_2/2	5-281
5.1.3.270	FAI355 - Harness for the left-hand alternator and grid heater - ACW032959_1/2	5-282
5.1.3.271	FAI355 - Harness for the left-hand alternator and grid heater - ACW032959_2/2	5-283
5.1.3.272	FAI360 - TopDock harness - 4377537-1/2	5-284
5.1.3.273	FAI360 - TopDock harness - 4377537-2/2	5-285
5.1.3.274	FAI361 - Adapter harness for wheel angle sensor - ACW059817	5-286
5.1.3.275	FAI364 - Adapter harness for suspended front axle position sensor - ACW033127_1/2	5-287
5.1.3.276	FAI364 - Adapter harness for suspended front axle position sensor - ACW033127_2/2	5-288
5.1.3.277	FAI368 - LED light adapter harness - ACW251462	5-289
5.1.3.278	FAI368 - LED light adapter harness - ACW347860_1/2	5-290
5.1.3.279	FAI368 - LED light adapter harness - ACW347860_2/2	5-291
5.1.3.280	FAI379 - ABS trailer connector harness - ACW117528_1/2	5-292
5.1.3.281	FAI379 - ABS trailer connector harness - ACW117528_2/2	5-293

6 Hydraulics diagrams 6-1

6.1 Hydraulics diagrams 6-3

6.1.1	Hydraulics diagrams	6-5
6.1.1.1	HFD01022 - Standard auxiliary hydraulics diagram ML180/ML140	6-5
6.1.1.2	HFD01032 - Standard hydraulics diagram GTA2520 Open Center 57 L/ min	6-6
6.1.1.3	HFD01034 - Standard hydraulics diagram GTA2520 Open Center 100 L/ min	6-7
6.1.1.4	HFD01047 - Standard hydraulics diagram GTA2520 Load Sensing	6-8
6.1.1.5	HFD01060 - Auxiliary hydraulics diagram: all options, ML140	6-9
6.1.1.6	HFD01061 - Auxiliary hydraulics diagram: all options, GTA2520 Load Sensing	6-10
6.1.1.7	HFD01062 - Auxiliary hydraulics diagram: all options, GTA2520 Open Center, 57 L/min	6-11
6.1.1.8	HFD01063 - Auxiliary hydraulics diagram: all options, GTA2520 Open Center, 100 L/min	6-12
6.1.1.9	HFD01067 - Auxiliary hydraulics diagram with all options, ML140 Mother Regulation	6-13
6.1.1.10	HFD01068 - Auxiliary hydraulics diagram with all options, GTA2520 Load Sensing Mother Regulation	6-14
6.1.1.11	HFD01069 - Auxiliary hydraulics diagram with all options, GTA2520 Open Center 57 L/min Mother Regulation	6-15
6.1.1.12	HFD01070 - Auxiliary hydraulics diagram with all options, GTA2520 Open Center 100 L/min Mother Regulation	6-16
6.1.1.13	HFD02009 - Hydraulics diagram: ML180/ML140 Auto-Guide™/ SpeedSteer steering system	6-17
6.1.1.14	HFD02010 - Hydraulics diagram: ML140/ML180 standard steering system	6-18
6.1.1.15	HFD03040 - Hydraulics diagram: ML180/ML140 brake system with trailer air brake	6-19

6.1.1.16	HFD03041 - Hydraulics diagram: ML180/ML140 brake system without trailer brake	6-20
6.1.1.17	HFD03052 - Hydraulics diagram: GTA2520 Open Center 57 L/min assisted braking	6-21
6.1.1.18	HFD03056 - Hydraulics diagram: GTA2520 Open Center 100 L/min assisted braking	6-22
6.1.1.19	HFD03059 - Hydraulics diagram: GTA2520 Load Sensing high-pressure braking with pneumatic trailer brake and Auto-Guide™ steering	6-23
6.1.1.20	HFD03060 - Hydraulics diagram: GTA2520 Load Sensing high pressure braking with trailer air brake	6-24
6.1.1.21	HFD03061 - Hydraulics diagram: GTA2520 Load Sensing assisted braking with pneumatic trailer brake and Auto-Guide™ steering	6-25
6.1.1.22	HFD03062 - Hydraulics diagram: GTA2520 Load Sensing assisted braking with trailer air brake	6-26
6.1.1.23	HFD03063 - Hydraulics diagram: GTA2520 Load Sensing high-pressure braking and Auto-Guide™ steering	6-27
6.1.1.24	HFD03064 - Hydraulics diagram: GTA2520 Load Sensing high pressure braking	6-28
6.1.1.25	HFD03065 - Hydraulics diagram: GTA2520 Load Sensing assisted braking and Auto-Guide™ steering	6-29
6.1.1.26	HFD03066 - Hydraulics diagram: GTA2520 Load Sensing assisted braking	6-30
6.1.1.27	HFD03075 - Hydraulics diagram: Open Center 57 L/min assisted braking with front suspension and trailer brake	6-31
6.1.1.28	HFD03076 - Hydraulics diagram: Open Center 57 L/min high-pressure braking with front suspension and trailer brake	6-32
6.1.1.29	HFD03077 - Hydraulics diagram: Open Center 57 L/min high-pressure braking and front suspension	6-33
6.1.1.30	HFD03078 - Hydraulics diagram: Open Center 100 L/min assisted braking with front suspension and trailer brake	6-34
6.1.1.31	HFD03079 - Hydraulics diagram: Open Center 100 L/min high-pressure braking with front suspension and trailer brake	6-35
6.1.1.32	HFD03080 - Hydraulics diagram: Open Center 100 L/min high-pressure braking and front suspension	6-36
6.1.1.33	HFD04004 - Hydraulics diagram: ML140/ML180 rear linkage	6-37
6.1.1.34	HFD05004 - Hydraulics diagram: ML140/ML180 front linkage	6-38
6.1.1.35	HFD05008 - Hydraulics diagram: GTA2520 Load Sensing front linkage and front spool valves with front set	6-39
6.1.1.36	HFD05009 - Hydraulics diagram: GTA2520 Load Sensing front linkage without front set	6-40
6.1.1.37	HFD06006 - Hydraulics diagram: ML180/ML140 auxiliary electrohydraulic spool valves	6-41
6.1.1.38	HFD06009 - Hydraulics diagram: ML180/ML140 auxiliary electrohydraulic and mechanical spool valves	6-42
6.1.1.39	HFD06012 - Hydraulics diagram: GTA2520 Load Sensing rear spool valves, four mechanical and Power Beyond	6-43
6.1.1.40	HFD06013 - Hydraulics diagram: GTA2520 Load Sensing rear spool valves, two mechanical and two electrohydraulic	6-44
6.1.1.41	HFD06014 - Hydraulics diagram: GTA2520 Load Sensing rear spool valves, four electrohydraulic and Power Beyond	6-45
6.1.1.42	HFD07004 - Hydraulics diagram: ML140/ML180 auto-hitch	6-46
6.1.1.43	HFD08008 - Hydraulics diagram: ML140 suspended front axle	6-47
6.1.1.44	HFD10000_1 - Hydraulics diagram: ALO loader	6-48
6.1.1.45	HFD10009 - Hydraulics diagram: ML140/ML180 tractor with loader	6-49
6.1.1.46	HFD10014 - Hydraulics diagram: GTA2520 Load Sensing loader with front set	6-50
6.1.1.47	HFD10015 - Hydraulics diagram: GTA2520 Load Sensing loader without front set	6-51

6.1.1.48	HFD10019 - Hydraulics diagram: ML140/180 Load Sensing loader with front set and 3rd function	6-52
6.1.1.49	HFD10020 - Hydraulics diagram: GTA2520 Load Sensing loader with front set and 3rd function	6-53
6.1.1.50	Transmission hydraulics diagram	6-54
7	Pneumatic diagrams	7-1
7.1	Pneumatic diagrams	7-3
7.1.1	Pneumatic diagrams	7-5
7.1.1.1	PFD01015 - GPA40/ML140/ML180 pneumatic trailer braking	7-5
7.1.1.2	PFD01016 - GPA20 pneumatic trailer braking	7-6
7.1.1.3	PFD01022 - Pneumatic diagram ML140/ML180 (Mother Regulation)	7-7
7.1.1.4	PFD01024 - Pneumatic diagram GPA20 (Mother Regulation)	7-8
8	Adjustments, bleeding and calibrations	8-1
8.1	Bleeding	8-3
8.1.1	Bleeding: Dyna-VT - Assisted brake master cylinders	8-3
8.1.1.1	Charge connector	8-3
8.1.1.2	Pressure connector	8-3
8.1.1.3	Bleed screw locations	8-3
8.1.1.4	Procedure for bleeding the assisted braking system	8-4
8.1.2	Bleeding: Dyna-4/Dyna-6 - Assisted brake master cylinders	8-6
8.1.2.1	Charge connector	8-6
8.1.2.2	Pressure connector - Load Sensing system	8-6
8.1.2.3	Pressure connector - Open Center system	8-6
8.1.2.4	Bleed screw locations	8-7
8.1.2.5	Procedure for bleeding the assisted braking system	8-8
8.1.3	Bleeding: Dyna-4/Dyna-6 - High-pressure braking	8-10
8.1.3.1	Bleed screw locations	8-10
8.1.3.2	Procedure for bleeding the high-pressure braking system	8-11
8.2	Calibrations	8-13
8.2.1	Calibrating the automatic disengagement of the differential and 4-wheel drive	8-13
8.2.2	Calibration of the forward-travel lever	8-15
8.2.3	Forward speed calibration	8-17
8.2.4	Front power take-off calibration for Dyna-4/Dyna-6	8-17
8.2.5	Calibration of the Dyna-4 and Dyna-6 PowerShuttle transmission	8-18
8.2.6	Calibrating the power sensor on transmission Dyna-6/Dyna-4	8-21
8.2.7	Dyna-VT transmission calibrations: Introduction and access to calibration using the instrument panel	8-22
8.2.8	Calibration of the high/low speed ranges (Hare/Tortoise) for Dyna-VT	8-23
8.2.9	Dyna-VT transmission calibration	8-24
8.2.10	Calibration of the Dyna-VT coupler function	8-25
8.2.11	Rear power take-off calibration for Dyna-VT	8-26
8.2.12	Front power take-off calibration Dyna-VT	8-27
8.2.13	Dyna-VT transmission calibration error code	8-28
8.2.14	Calibration of the clutch pedal sensor	8-31
8.2.15	Calibration of the throttle pedal sensor	8-31
8.2.16	Calibrating the rear linkage	8-32
8.2.17	Calibration of the front linkage position sensor	8-34
8.2.18	Calibrate the suspended front axle.	8-35
8.2.19	Calibration of the left/right steering angle sensor (WAS)	8-37
8.2.20	Calibration of the centring steering angle sensor (WAS)	8-44
8.2.21	Left/right steering angle sensor (WAS) calibration error code	8-50
8.2.22	Angle sensor (WAS) centring calibration error code	8-51
8.2.23	Calibrations to be carried out using the diagnostic tool	8-51
8.2.23.1	Calibrating the forward travel lever on the armrest	8-51
8.2.23.2	Calibration of the FingerTIP controls on the armrest	8-54

8.2.23.3	Calibration of the FingerTIPs on the console	8-57
8.2.23.4	Joystick calibration	8-60
8.2.23.5	Calibrating the forward travel lever on the armrest	8-63
8.2.23.6	Calibrating the hand throttle.	8-65
8.2.23.7	Calibrating the depth control thumb wheel	8-67

1. General Information

1.1 General specifications	1-3
1.1.1 tractors MF 6700 SDyna-4	1-3
1.1.2 Tractors MF 6700 SDyna-6	1-11
1.1.3 MF 6700 S Dyna-VT tractors	1-20
1.2 Forward speeds	1-30
1.2.1 Forward speed with Dyna-4 40 kph transmission and 18.4R38 tires	1-30
1.2.2 Forward speed with Dyna-4 40 kph transmission and 20.8R38 tires	1-30
1.2.3 Forward speed with Dyna-6 40 kph ECO transmission and 20.8R38 tires	1-32
1.2.4 Forward speed with Dyna-6 50 kph transmission and 20.8R38 tires	1-33
1.2.5 Forward speed for all models with transmission in Dyna-VT mode	1-35
1.3 Dimensions and weights	1-37
1.3.1 Dimensions and weights	1-37
1.4 Attachment points	1-41
1.4.1 Attachment points: MF 6712 S / MF 6713 S / MF 6714 S Dyna-4/Dyna-6 models without front linkage	1-41
1.4.2 Attachment points: MF 6712 S / MF 6713 S / MF 6714 S Dyna-4/Dyna-6 models with front linkage	1-43
1.4.3 Attachment points: MF 6715 S / MF 6716 S / MF 6718 S Dyna-4/Dyna-6 models without front linkage	1-45
1.4.4 Attachment points: MF 6715 S / MF 6716 S / MF 6718 S Dyna-4/Dyna-6 models with front linkage	1-47
1.4.5 Attachment points: MF 6713 S / MF 6714 S / MF 6715 S / MF 6716 S / MF 6718 S Dyna-VT models without front linkage:	1-49
1.4.6 Attachment points: MF 6713 S / MF 6714 S / MF 6715 S / MF 6716 S / MF 6718 S Dyna-VT models with front linkage	1-51
1.5 capacities	1-53
1.5.1 capacities	1-53
1.5.2 Accumulator pressure and volume	1-54
1.6 Tightening torques, retaining compounds and sealing products	1-55
1.6.1 Retaining compounds and sealing products	1-55
1.6.2 Tightening torques for screws and nuts	1-56
1.6.3 Tightening torques for hydraulic unions	1-60
1.7 Units of measurement	1-64
1.7.1 Conversion table	1-64

1.1 General specifications

1.1.1 tractors MF 6700 SDyna-4

Engine				
Model	MF 6712 S	MF 6713 S	MF 6714 S	MF 6715 S
Brand	AGCO Power			
Type	49 AWF			
Nominal power hp ISO (kW) at an engine speed of 2100 rpm	110 (81)	115 (85)	130 (96)	140 (103)
Maximum power hp ISO (kW) at an engine speed of 2000 rpm	120 (88)	130 (96)	140 (103)	150 (110)
Maximum EPM power hp ISO (kW) at an engine speed of 2000 rpm	140 (103)	150 (110)	160 (118)	175 (129)
Maximum EPM torque (Nm)	614 Nm	648 Nm	691 Nm	745 Nm
Engine displacement (in liters)	4.9			
Piston travel	134 mm			
Piston diameter	108 mm			
Compression ratio	17,8 bar ± 0,5 bar			
Number of cylinders	4			
Idle speed, hand brake engaged	750 rpm			
Idle speed, hand brake disengaged	850 rpm			
Nominal speed	2100 rpm			
Maximum speed	2130 rpm			
Engine weight	345 kg			
High-pressure pump brand	Bosch			
Fuel injection type	Common rail			
Firing order	1-2-4-3			
Maximum pressure in the high-pressure system	2000 bar			
Injector brand	Bosch			
Injector type	CRIN 3.20			
Charge pump type	Manual			
Fuel prefilter filtration capacity	10 μ			
Main fuel filter filtration capacity	5 μ			



Suggest:

For more complete manuals. Please go to the home page.

<https://www.ebooklibonline.com>

If the above button click is invalid. Please download this document first, and then click the above link to download the complete manual.

Thank you so much for reading

Engine				
Model	MF 6712 S	MF 6713 S	MF 6714 S	MF 6715 S
Low-pressure system pressure at minimum speed	0,5 bar to 1 bar			
Low-pressure system pressure at maximum speed	0,5 bar to 1 bar			
Recommended oil:	API-CJ4 or ACEA-E9			
Maximum operating tilt (precautions)	25° pitch			
	20° roll			
Oil/fuel consumption	Maximum 0.2%			
Lubrication system	Gear pump			
Oil cooling system	Oil/water heat exchanger			
Oil pressure at minimum speed	1,5 bar			
Oil pressure at maximum speed	2,5 bar at 5 bar depending on the temperature			
Relief valve adjustment pressure	5 bar (spring pressure)			
Air suction type	Turbocharged with air/air intercooler			
Air preheating type	Grid heater with relay controlled by the ECU			
Number of valves	16			
Valve clearance value	0,35 mm (inlet and exhaust)			
Engine cooling system	Coolant			
Fan type	Viscostatic			
Thermostat begins to open at	83 °C			
Coolant temperature	-36 °C to +106 °C			
Air compressor brand for the brake system	Knorr Bremse			
Type of compressor	Piston			
Pressure range:	6,5 bar to 8 bar			
Block preheater	110 or 220 volts			
Fuel preheater	Optional			
Urea preheater	Tank: coolant			
Exhaust fumes recirculation system	Pump module and supply lines: electric			
DOC + SCR system (Diesel Exhaust Fluid (DEF) injection)	DOC with metal substrate (exhaust fumes oxidation catalyzer)			
	SCR Technology with 1 ceramic substrate (exhaust fumes treatment)			
Safety system	NOx sensors at exhaust inlet and outlet			

Engine				
Model	MF 6712 S	MF 6713 S	MF 6714 S	MF 6715 S
Device brand	Bosch Denox 2.2+			
Type of control	Engine controller EEM4			
Urea solidification temperature	-11 °C			
Oil vapor recirculation system	Closed system breather (CCV)			
Belt: Air conditioning compressor/ left-hand alternator	Poly V belt			
Belt: Fan/right-hand alternator	Poly V belt			
Belt: Air compressor	Poly V belt			

Rear axle transmission		
Model	MF 6712 S/MF 6713 S	MF 6714 S/MF 6715 S
Gearbox type	GBA25	
Number of ratios	4	
Number of ranges	4	
Number of gears	16/16	
Super creeper gears	14/1	
Number of gears with super creeper gears	32/32	
Maximum speed	40 km/h	
Rear axle type	GPA22/22+	GPA23/23+
Number of pinion/crown wheel teeth	8/39	8/39
Rear axle ratio	24.75	27.16
4WD ratio	0.83	0.83
Final drive type	Heavy Duty (HD) or Heavy Duty + (HD+)	Super Heavy Duty (SHD)
Final drive reduction ratio	(53+13)/13	(64+14)/14
Maximum 4WD clutch torque	180 daNm	206 daNm
Number of 4WD disks	6 disks	
Main brake type	Disk	
Number of disks per side	1 disk	
Braking pressure	66 - 70 bar	
Parking brake type	Hand brake	

<https://www.ebooklibonline.com>

Hello dear friend!

Thank you very much for reading.

Enter the link into your browser.

The full manual is available for immediate download.

<https://www.ebooklibonline.com>